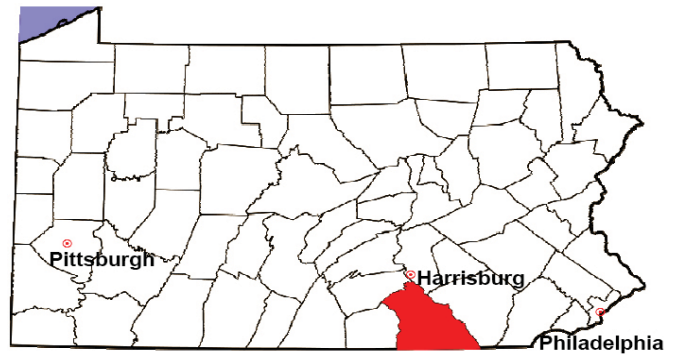


YORK COUNTY

2008 Population Estimate: 424,583

Class of County: 3rd

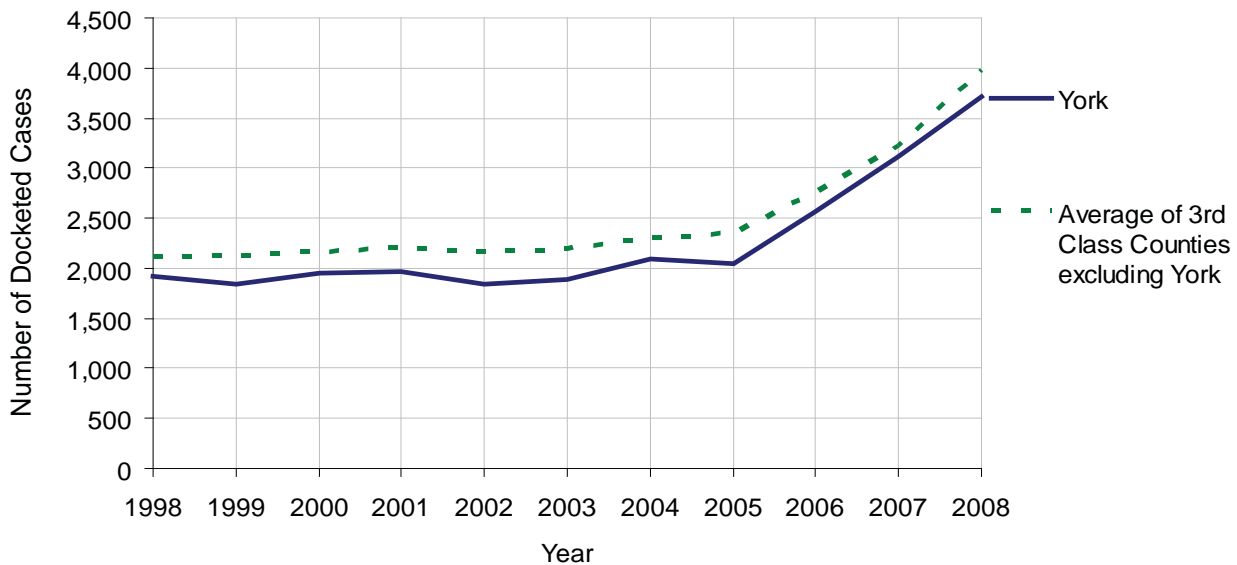
No. of Common Pleas Court Judgeships: 14



2008 Civil		Civil Action		
Docketed Cases		3,720		
Arbitrated Cases		128		
Trial-Ready Cases:		Civil Action	Other	Total
Cases Pending 1/1/08		48	5	53
Became Trial Ready in '08		103	15	118
Restored to Trial List		22	2	24
Appeals from Arbitration		5	1	6
Cases Available for Trial		178	23	201
Disposed By:				
Settlement		46	7	53
Non-Jury Trial		5	2	7
Jury Trial		32	2	34
Stricken from Trial List		44	7	51
Other		7	0	7
Cases Disposed		134	18	152
Cases Pending 12/31/08		44	5	49

Age of Trial-Ready Cases as of 12/31/08 (Civil Action Only)		
0-6 months	42	95%
7-12 months	2	5%
13-18 months	0	0%
19-24 months	0	0%
25-30 months	0	0%
31-36 months	0	0%
Over 36 months	0	0%
Total	44	100%

Docketed Cases, 1998-2008

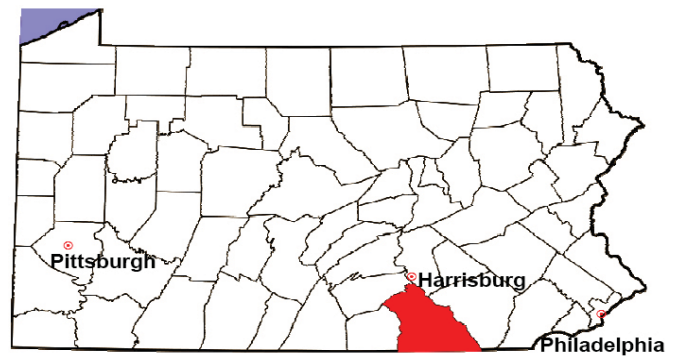


YORK COUNTY

2008 Population Estimate: 424,583

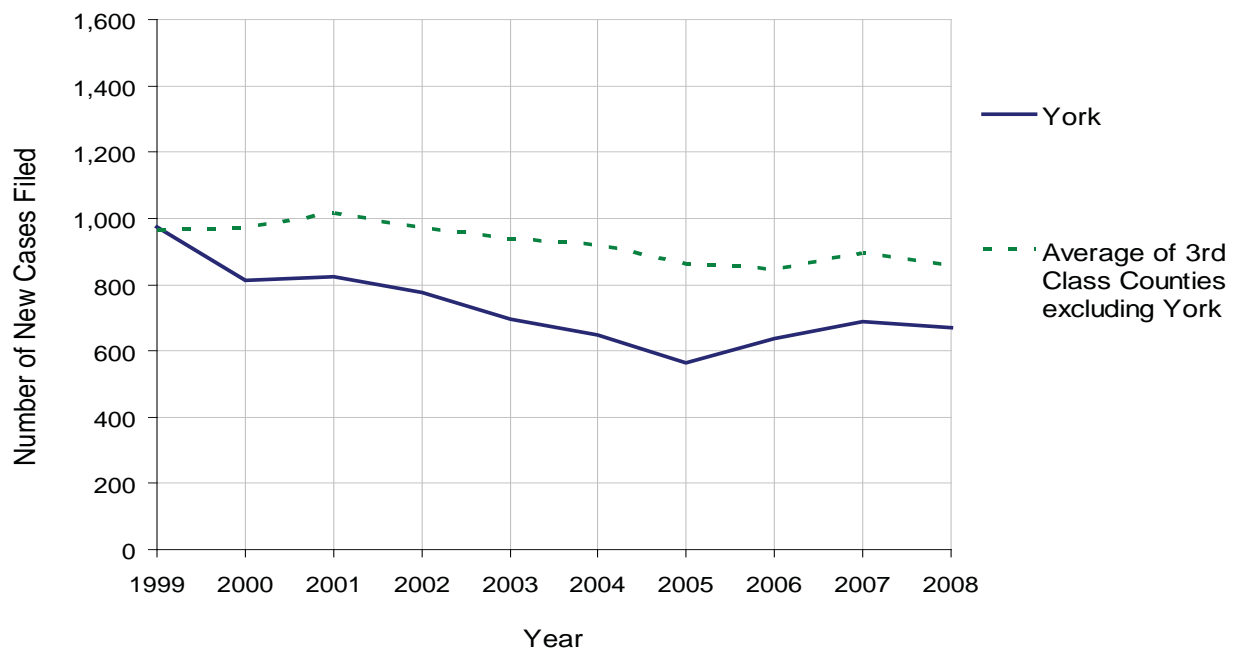
Class of County: 3rd

No. of Common Pleas Court Judgeships: 14



2008 Protection From Abuse	No. of Petitions	%
Cases Pending 1/1/08	25	
New Cases Filed in '08	671	
Cases Available for Processing	696	
Processed By:		
Final Order After Hearing	116	17.2%
Final Order by Stipulation or Agreement	266	39.5%
Dismissal	112	16.6%
Withdrawal	179	26.6%
Other	1	0.1%
Cases Processed	674	100.0%
Cases Pending 12/31/08	22	

PFA New Cases Filed, 1999-2008

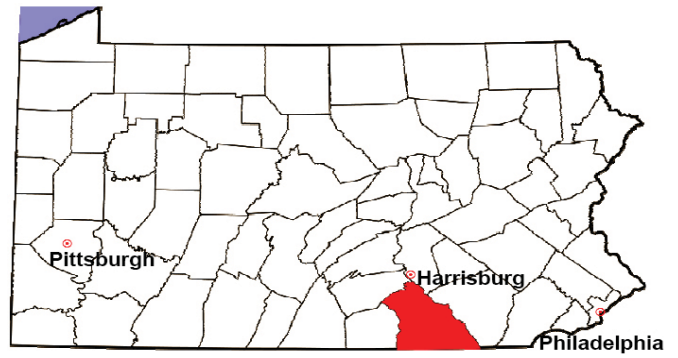


YORK COUNTY

2008 Population Estimate: 424,583

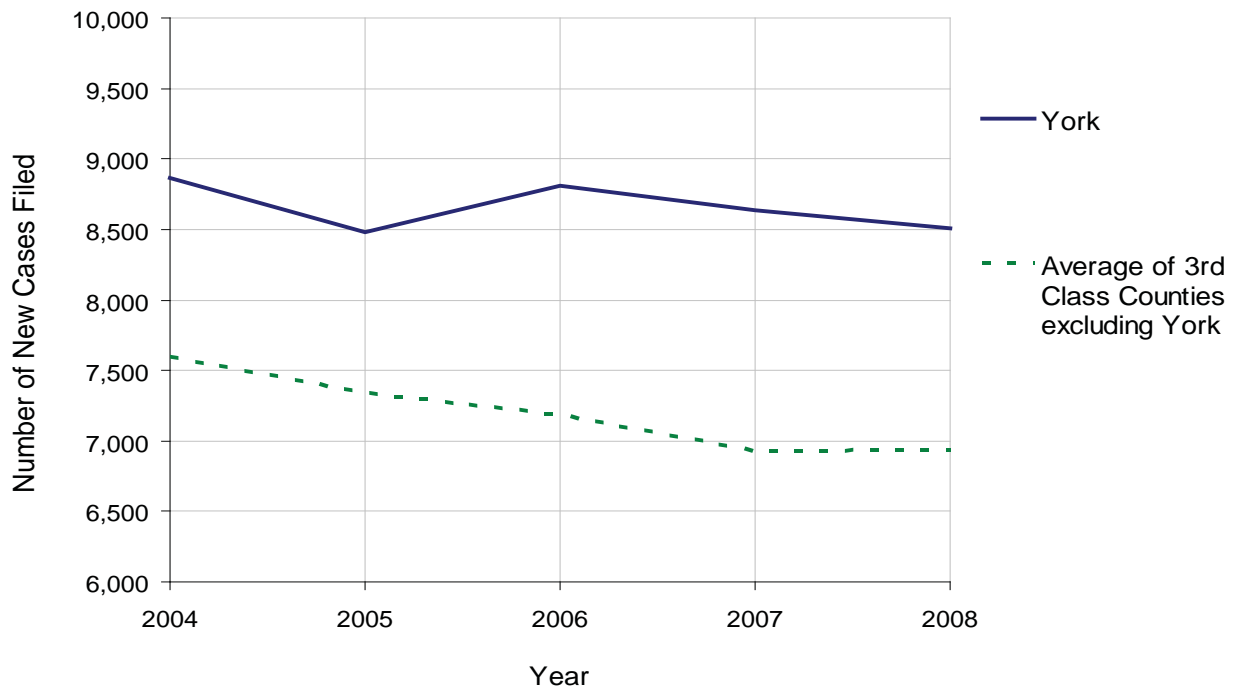
Class of County: 3rd

No. of Common Pleas Court Judgeships: 14



2008 Spousal & Child Support	No. of Petitions	%
Cases Pending 1/1/08	1,560	
New Cases Filed in '08	8,512	
Dockets Transferred In (+)	63	
Dockets Transferred Out (-)	79	
Cases Available for Processing	10,056	
Processed By:		
Judge	420	4.8%
Intake Officer	8,305	95.2%
Hearing Officer	1	0.0%
Other	0	0.0%
Cases Processed	8,726	100.0%
Cases Pending 12/31/08	1,330	

Spousal & Child Support New Cases Filed, 1998-2008

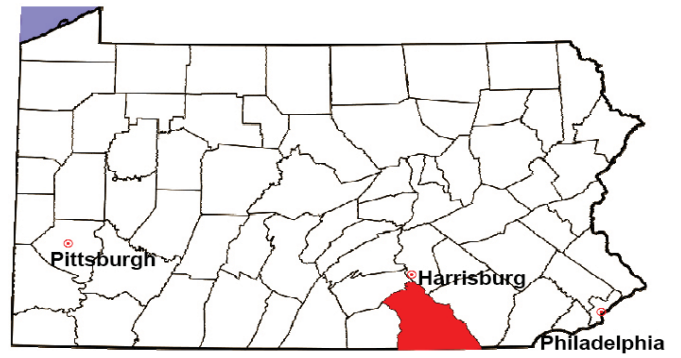


YORK COUNTY

2008 Population Estimate: 424,583

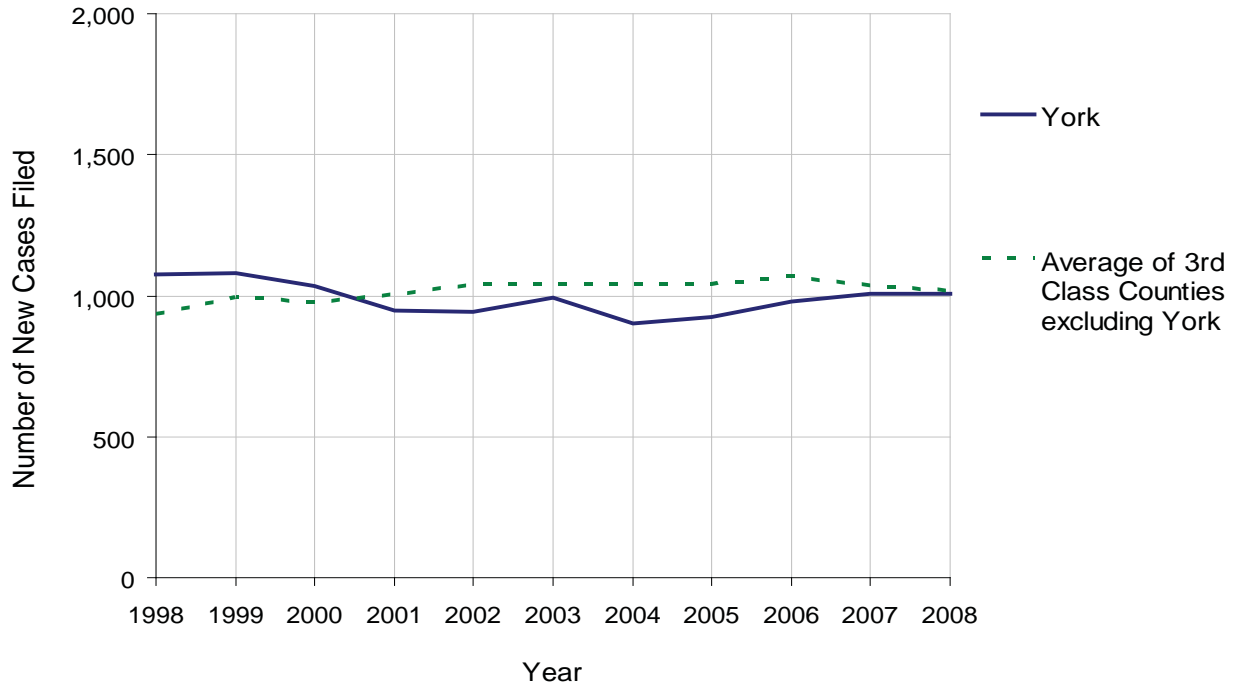
Class of County: 3rd

No. of Common Pleas Court Judgeships: 14



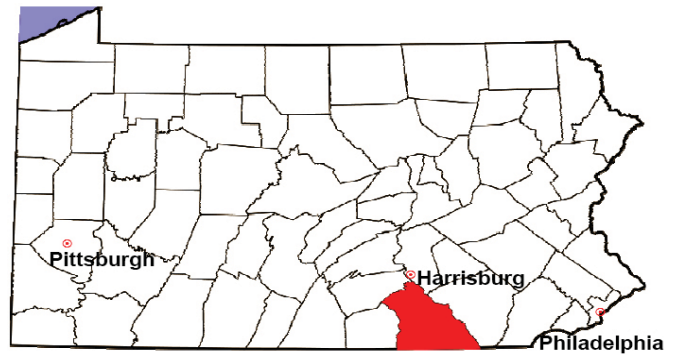
2008 Custody/Partial Custody/Visitation	No. of Petitions	%
Cases Pending 1/1/08	36	
New Cases Filed in '08	1,005	
Cases Available for Processing	1,041	
Processed By:		
Judge	130	13.2%
Non-Judicial Officer	779	79.2%
Other	74	7.5%
Cases Processed	983	100.0%
Cases Pending 12/31/08	58	

Custody/Partial Custody/Visitation New Cases Filed
1998-2008



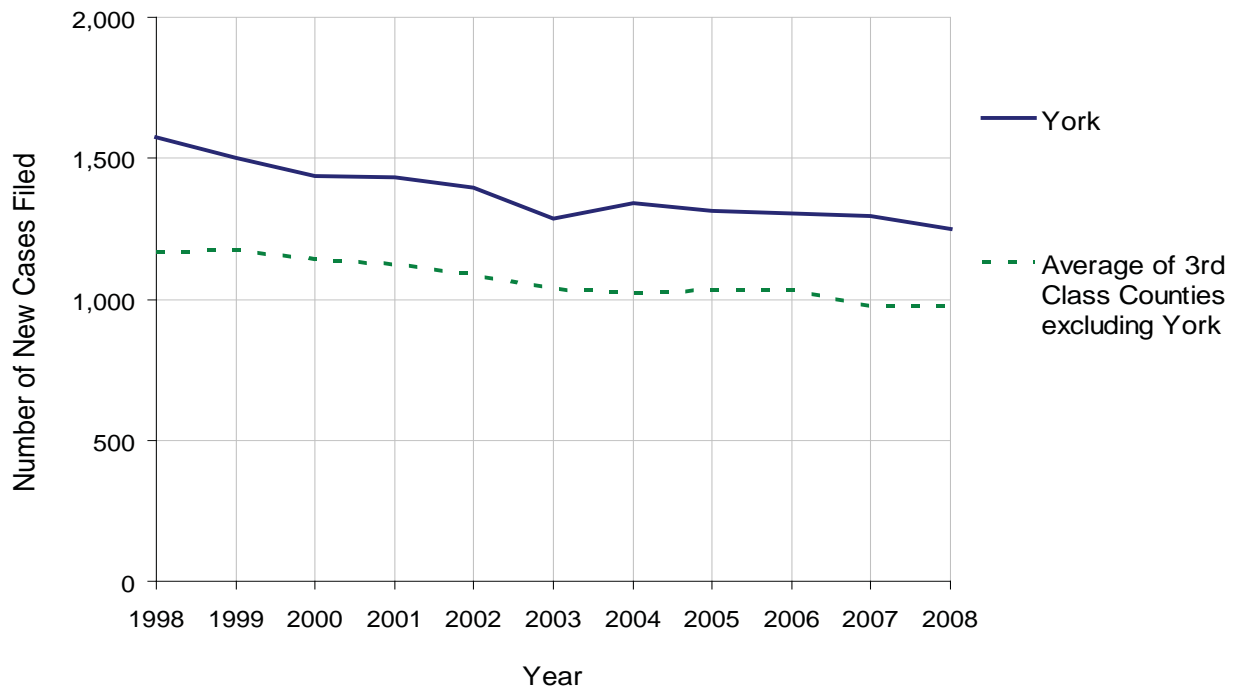
YORK COUNTY

2008 Population Estimate: 424,583
 Class of County: 3rd
 No. of Common Pleas Court Judgeships: 14



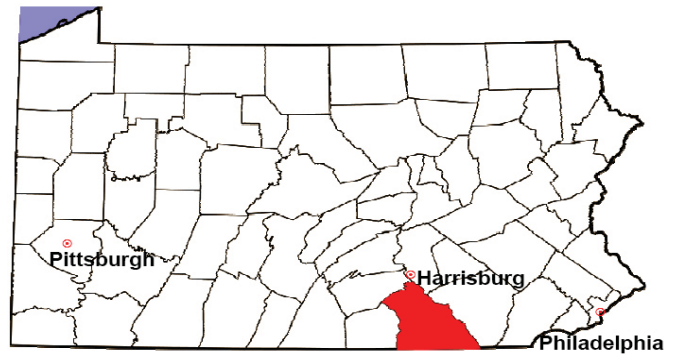
2008 Divorce	No. of Petitions	%
Cases Pending 1/1/08	2,813	
New Cases Filed in '08	1,248	
Cases Available for Processing	4,061	
Processed By:		
Contested Before a Judge	26	2.2%
Contested Before a Master	85	7.3%
Uncontested	1,029	88.6%
Other	21	1.8%
Cases Processed	1,161	100.0%
Cases Pending 12/31/08	2,900	

Divorce New Cases Filed, 1998-2008



YORK COUNTY

2008 Population Estimate: 424,583
 Class of County: 3rd
 No. of Common Pleas Court Judgeships: 14



2008 Juvenile Dependency Abuse/Neglect	No. of Petitions	%
Cases Pending 1/1/08	127	
New Cases Filed in '08	234*	
Cases Available for Processing	361	
Processed By:		
Judge	135	73.8%
Non-Judicial Officer	5	2.7%
Other	43	23.5%
Cases Processed	183	100.0%
Cases Pending 12/31/08	178	

* Each new case refers to one child.

Abuse/Neglect New Cases Filed, 2000-2008



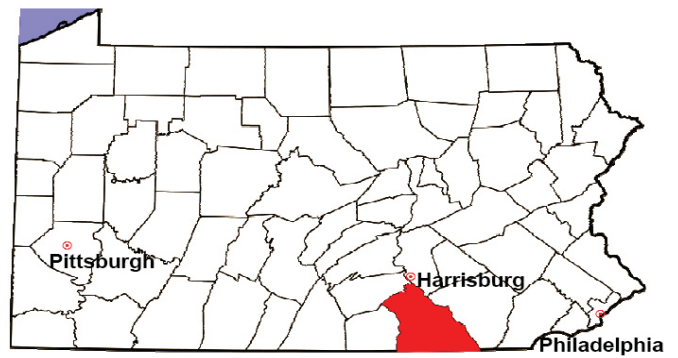
* The significant drop from 2002 to 2004 reflects a change in the system used for data collection.

YORK COUNTY

2008 Population Estimate: 424,583

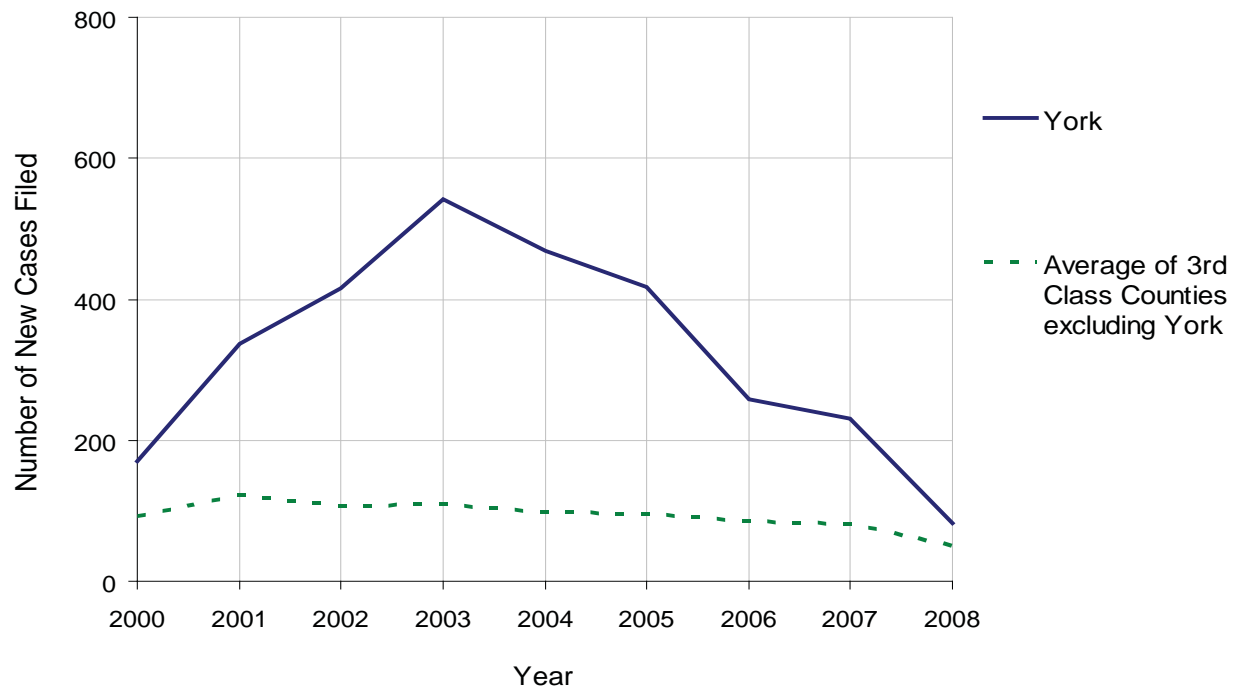
Class of County: 3rd

No. of Common Pleas Court Judgeships: 14



2008 Juvenile Dependency Status Offenses	No. of Petitions	%
Cases Pending 1/1/08	114	
New Cases Filed in '08	83	
Cases Available for Processing	197	
Processed By:		
Judge	45	60.8%
Non-Judicial Officer	0	0.0%
Other	29	39.2%
Cases Processed	74	100.0%
Cases Pending 12/31/08	123	

Status Offenses New Cases Filed, 2000-2008

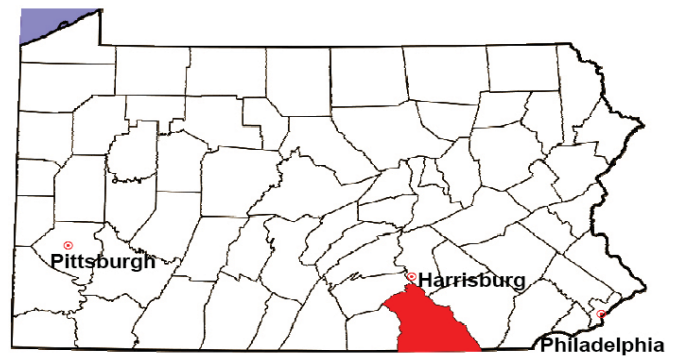


YORK COUNTY

2008 Population Estimate: 424,583

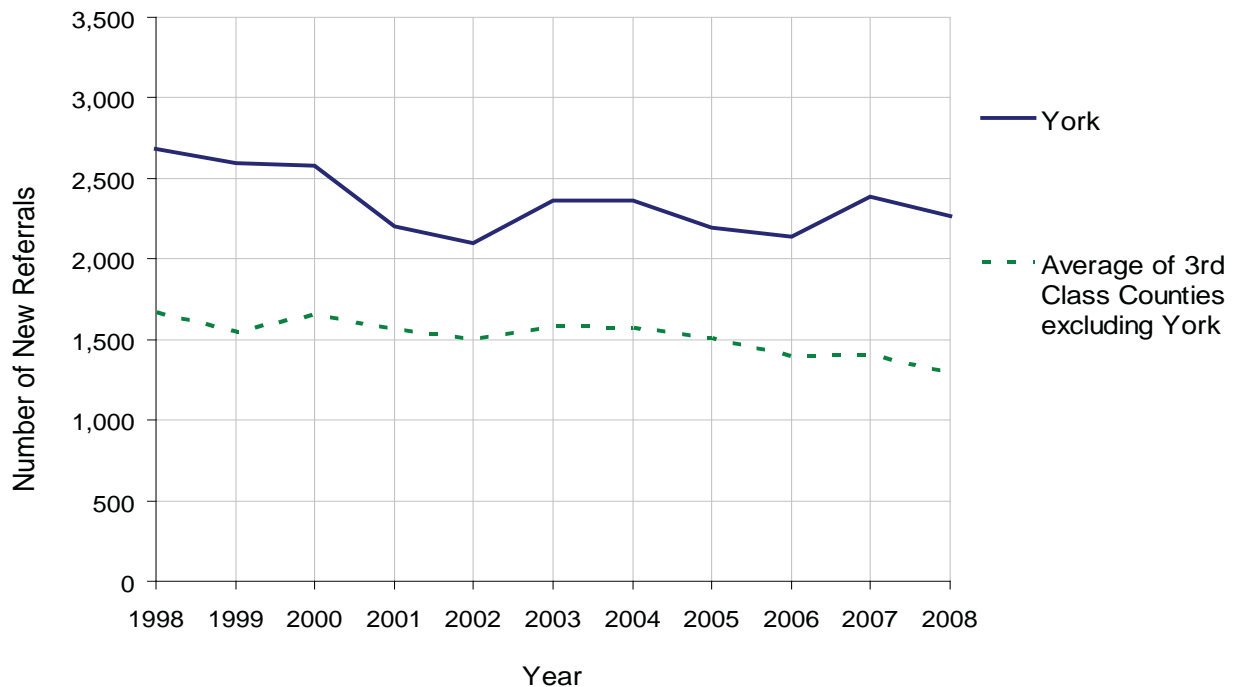
Class of County: 3rd

No. of Common Pleas Court Judgeships: 14



2008 Juvenile Delinquency	No. of Referrals	%
Cases Pending 1/1/08	393	
New Referrals in '08	2,264	
Cases Available for Processing	2,657	
Processed By:		
Judge	719	34.4%
Non-Judicial Officer	1,352	64.6%
Other	21	1.0%
Cases Processed	2,092	100.0%
Cases Pending 12/31/08	565	

Juvenile Delinquency New Referrals, 1998-2008

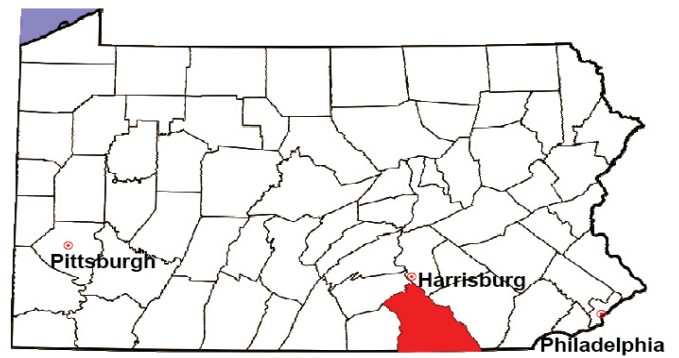


YORK COUNTY

2008 Population Estimate: 424,583

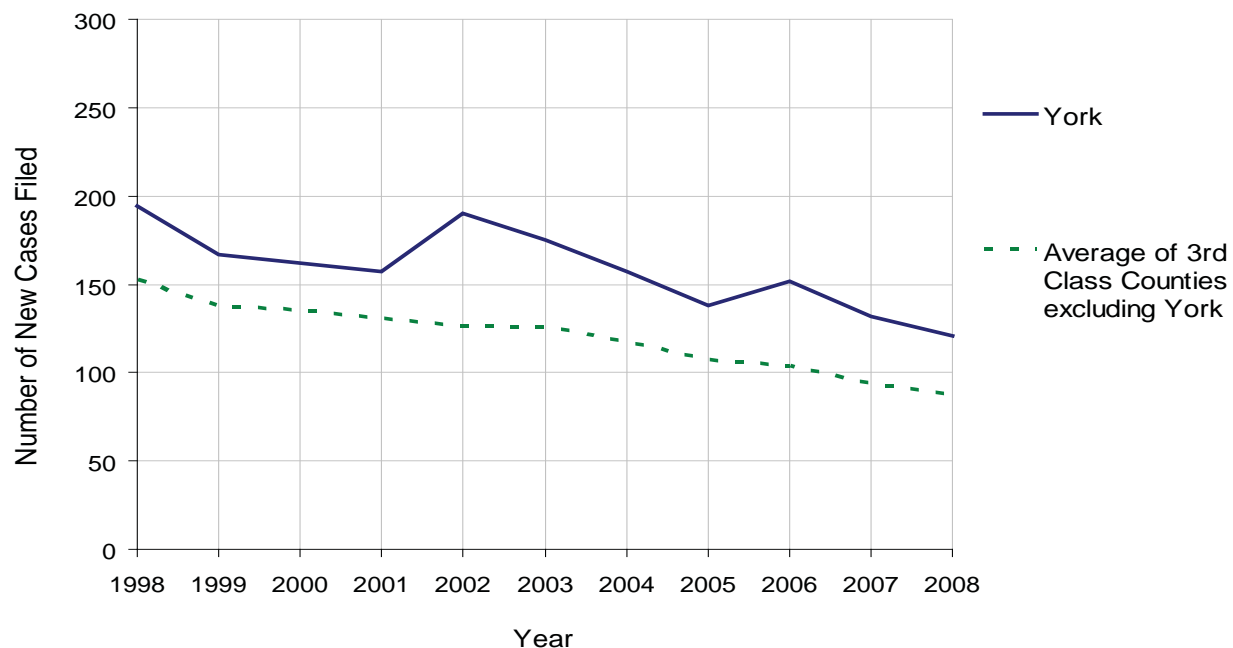
Class of County: 3rd

No. of Common Pleas Court Judgeships: 14



2008 Accounts	No. of Accounts	%
Cases Pending 1/1/08	15	
New Cases Filed in '08	121	
Cases Available for Processing	136	
Processed By:		
Contested before a Judge	10	7.9%
Contested before a Non-Judicial Officer	0	0.0%
Uncontested	112	88.9%
Other	4	3.2%
Cases Processed	126	100.0%
Cases Pending 12/31/08	10	

Accounts New Cases Filed, 1998-2008

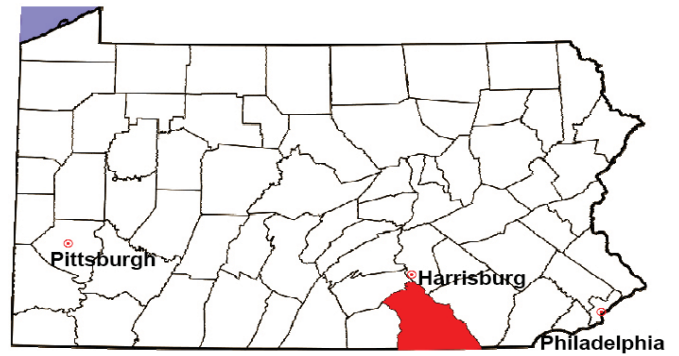


YORK COUNTY

2008 Population Estimate: 424,583

Class of County: 3rd

No. of Common Pleas Court Judgeships: 14



2008 Adoptions		No. of Cases	%
Cases Pending 1/1/08		54	
New Cases Filed in '08		155	
Cases Available for Processing		209	
Processed By:			
Contested before a Judge	Granted	1	0.6%
	Denied	2	1.2%
Uncontested	Granted	164	96.5%
	Denied	0	0.0%
Other		3	1.8%
Cases Processed		170	100.0%
Cases Pending 12/31/08		39	

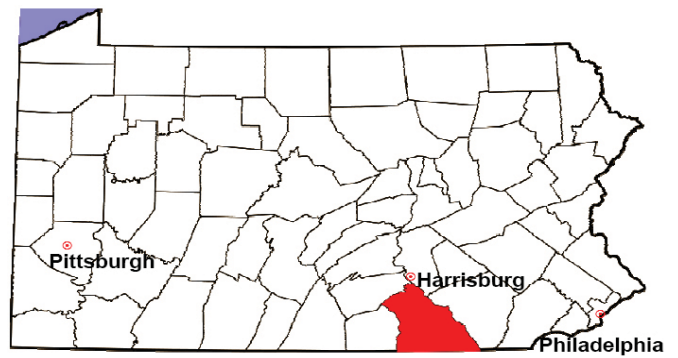
Note: Prior to 2008, each petition was counted as one new case, regardless of the number of children listed on the petition. Starting in 2008, each child listed on a petition is counted as a separate case. Therefore, statistics for 2008 should not be compared with those for previous years.

YORK COUNTY

2008 Population Estimate: 424,583

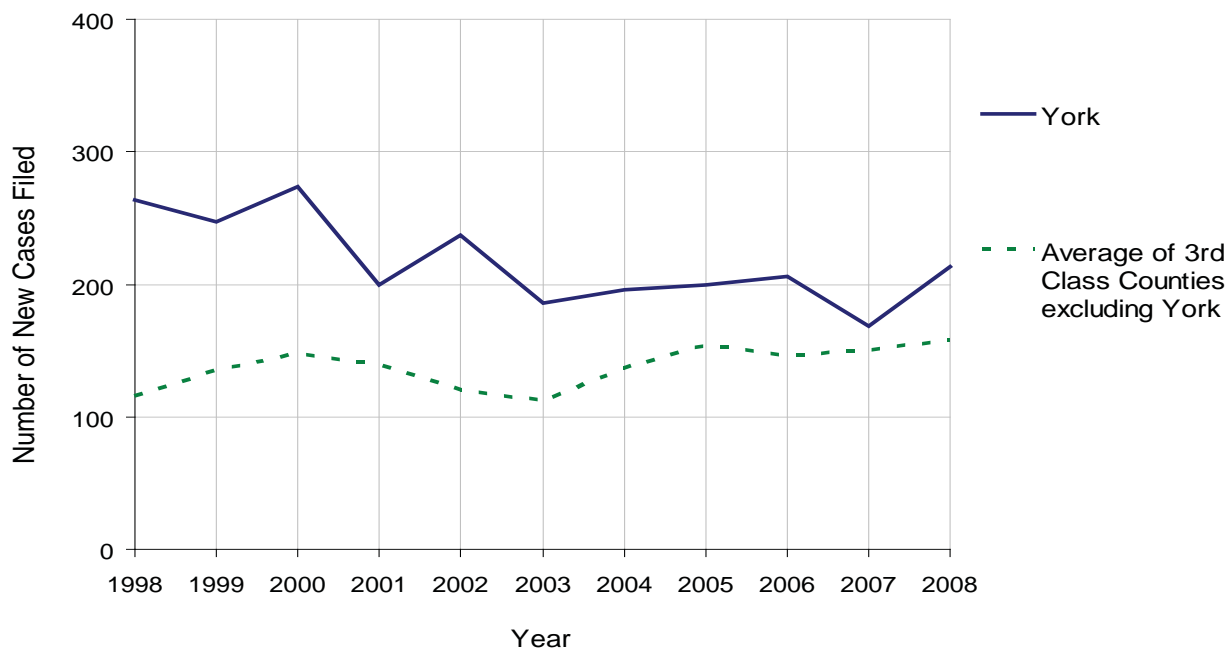
Class of County: 3rd

No. of Common Pleas Court Judgeships: 14



2008 Relinquishments/Terminations	No. of Petitions	%
Cases Pending 1/1/08	53	
New Cases Filed in '08	213	
Cases Available for Processing	266	
Processed By:		
Contested before a Judge	23	11.1%
Uncontested	179	86.5%
Other	5	2.4%
Cases Processed	207	100.0%
Cases Pending 12/31/08	59	

Relinquishments/Terminations New Cases Filed, 1998-2008

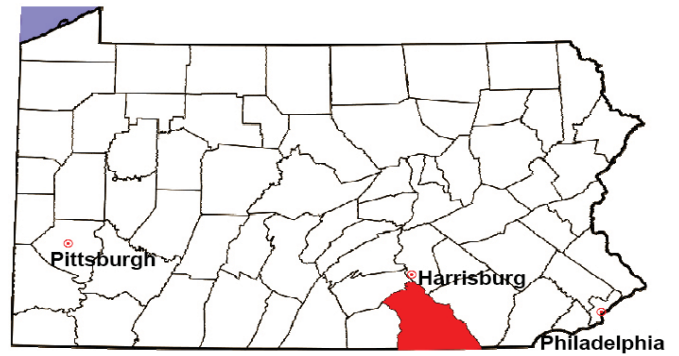


YORK COUNTY

2008 Population Estimate: 424,583

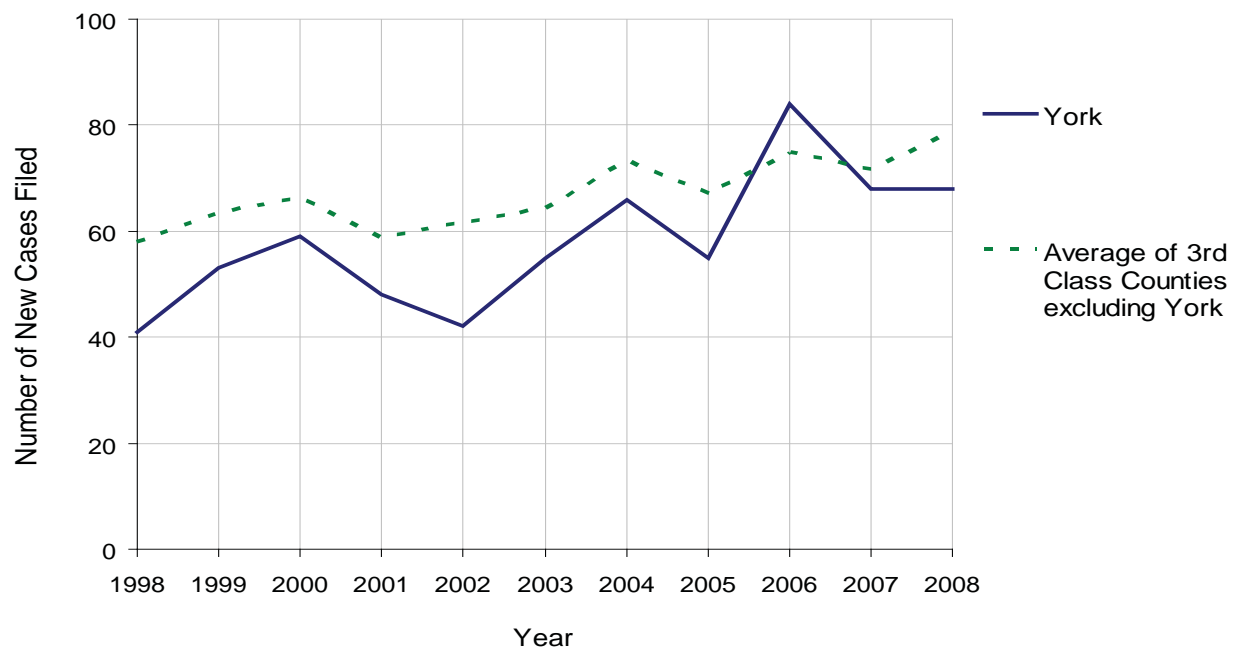
Class of County: 3rd

No. of Common Pleas Court Judgeships: 14



2008 Appointment of Guardians	No. of Petitions	%
Cases Pending 1/1/08	14	
New Cases Filed in '08	68	
Cases Available for Processing	82	
Processed By:		
Contested before a Judge	6	7.8%
Uncontested	53	68.8%
Other	18	23.4%
Cases Processed	77	100.0%
Cases Pending 12/31/08	5	

Appointment of Guardians New Cases Filed, 1998-2008

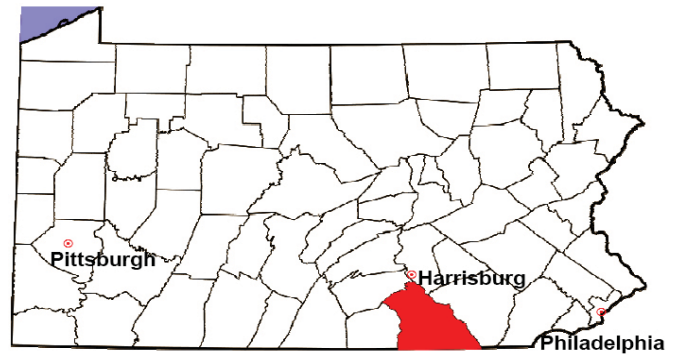


YORK COUNTY

2008 Population Estimate: 424,583

Class of County: 3rd

No. of Common Pleas Court Judgeships: 14



2008 Jury Activity & Performance Measures

A. Juror Days	11,552
B. Number Sent to Voir Dire	4,789
Voir Dire Attendance Rate $(B/A * 100)$	41.5%
C. Number of Voir Dires Started	162
Juror Days Per Voir Dire Starts (A/C)	71
D. Number of Jurors Selected	2,027
Juror Selection Rate $(D/B * 100)$	42.3%
E. Number of Jury Trials Started	162
Juror Days Per Trial Starts (A/E)	71
Number of Voir Dires Not Resulting in Trial $(C-E)$	0
Percent Voir Dires Not Resulting in Trial $(C-E)/C * 100$	0.0%
F. Pool Days	96
G. Zero Panel Days	25
Percent Zero Panel Days $(G/F * 100)$	26.0%
H. Total Juror Fees Incurred	\$325,799
Average Juror Fees Per Trial (H/E)	\$2,011

Average Juror Fees Per Trial, 1998-2008

