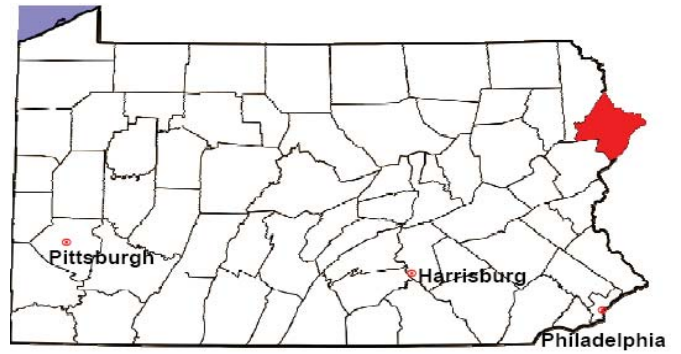


PIKE COUNTY

2008 Population Estimate: 59,664

Class of County: 6th

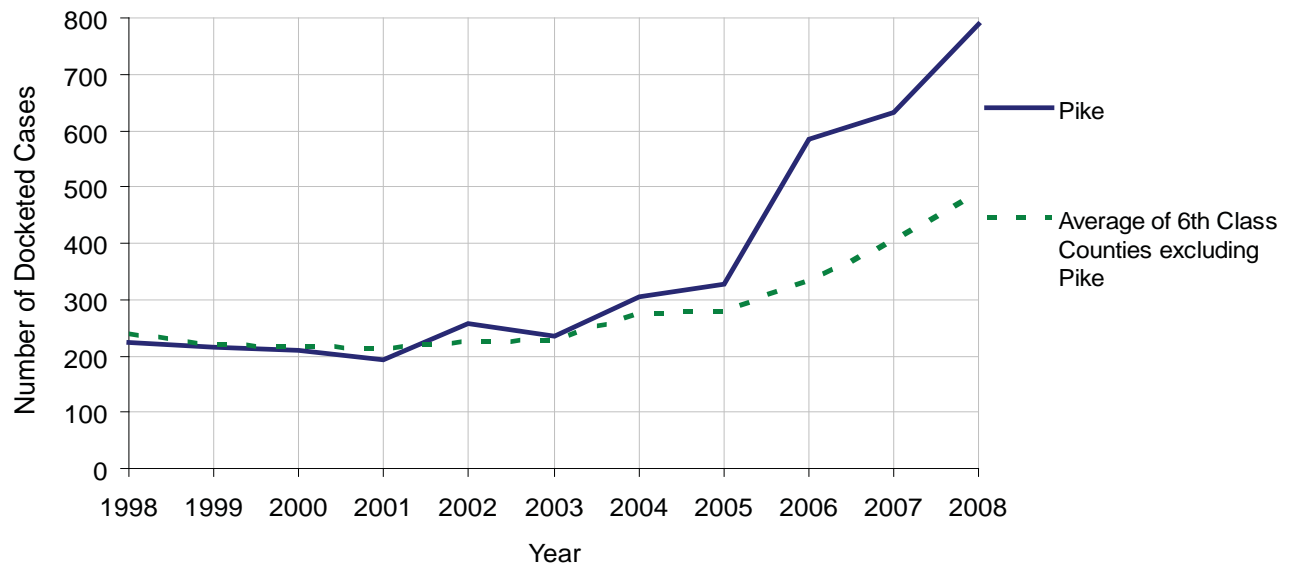
No. of Common Pleas Court Judgeships: 2



2008 Civil		Civil Action		
Docketed Cases		788		
Arbitrated Cases		16		
Trial-Ready Cases:		Civil Action	Other	Total
Cases Pending 1/1/08		31	0	31
Became Trial Ready in '08		52	0	52
Restored to Trial List		0	0	0
Appeals from Arbitration		0	0	0
Cases Available for Trial		83	0	83
Disposed By:				
Settlement		20	0	20
Non-Jury Trial		12	0	12
Jury Trial		7	0	7
Stricken from Trial List		10	0	10
Other		4	0	4
Cases Disposed		53	0	53
Cases Pending 12/31/08		30	0	30

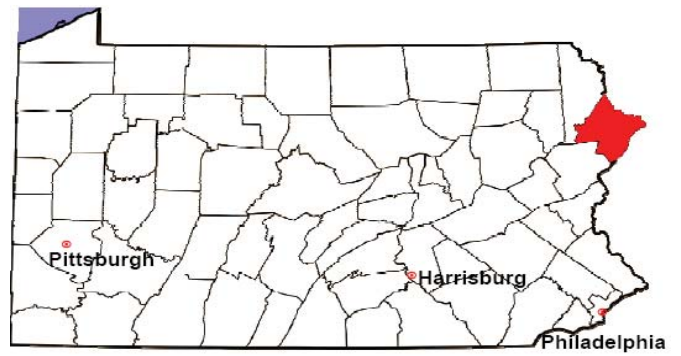
Age of Trial-Ready Cases as of 12/31/08 (Civil Action Only)		
0-6 months	22	73%
7-12 months	2	7%
13-18 months	1	3%
19-24 months	2	7%
25-30 months	1	3%
31-36 months	2	7%
Over 36 months	0	0%
Total	30	100%

Docketed Cases, 1998-2008



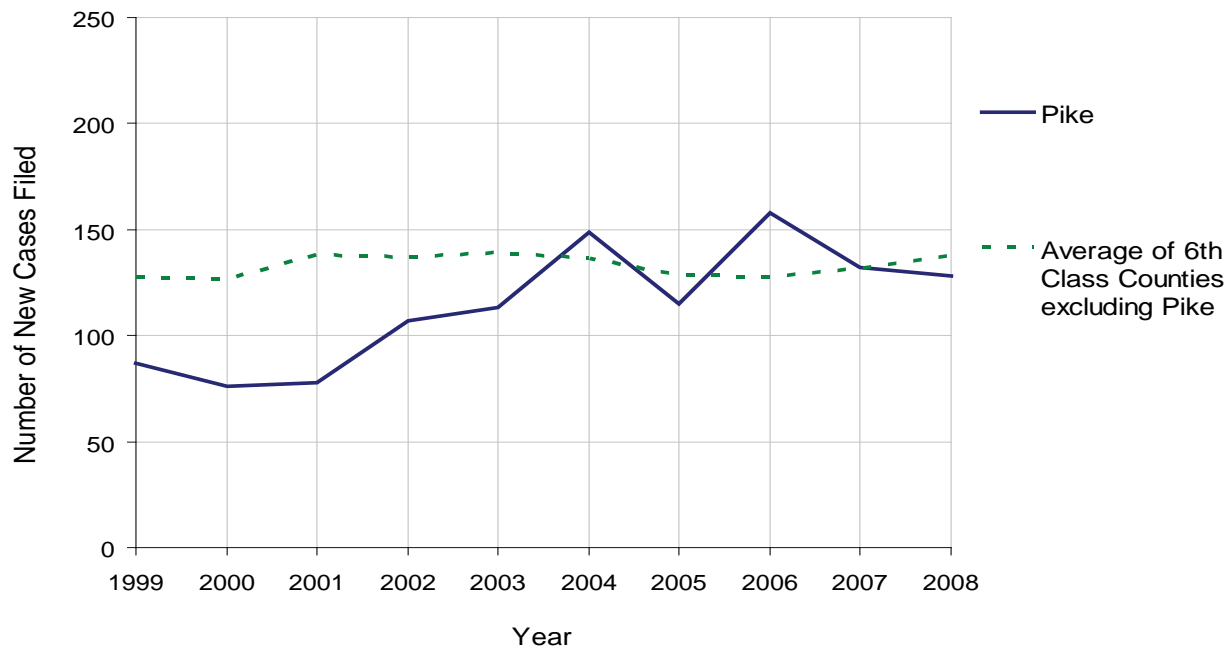
PIKE COUNTY

2008 Population Estimate: 59,664
 Class of County: 6th
 No. of Common Pleas Court Judgeships: 2



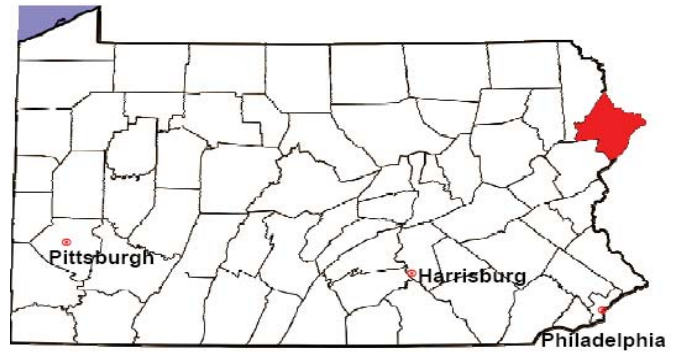
2008 Protection From Abuse	No. of Petitions	%
Cases Pending 1/1/08	8	
New Cases Filed in '08	128	
Cases Available for Processing	136	
Processed By:		
Final Order After Hearing	42	31.8%
Final Order by Stipulation or Agreement	51	38.6%
Dismissal	21	15.9%
Withdrawal	18	13.6%
Other	0	0.0%
Cases Processed	132	100.0%
Cases Pending 12/31/08	4	

PFA New Cases Filed, 1999-2008



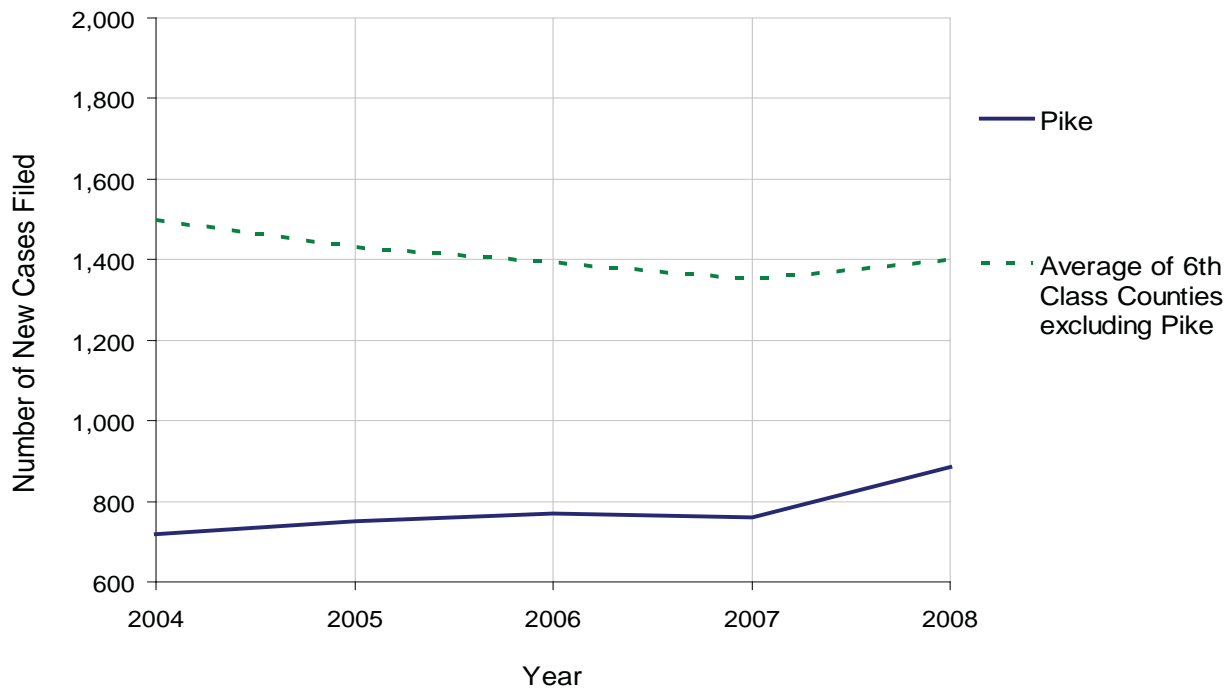
PIKE COUNTY

2008 Population Estimate: 59,664
 Class of County: 6th
 No. of Common Pleas Court Judgeships: 2



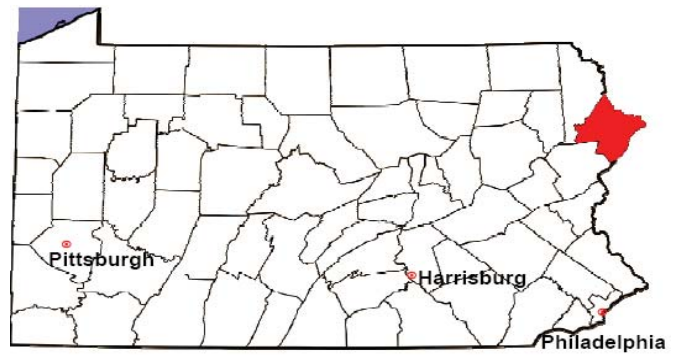
2008 Spousal & Child Support	No. of Petitions	%
Cases Pending 1/1/08	159	
New Cases Filed in '08	886	
Dockets Transferred In (+)	10	
Dockets Transferred Out (-)	21	
Cases Available for Processing	1,034	
Processed By:		
Judge	29	3.4%
Intake Officer	835	96.6%
Hearing Officer	0	0.0%
Other	0	0.0%
Cases Processed	864	100.0%
Cases Pending 12/31/08	170	

Spousal & Child Support New Cases Filed, 1998-2008



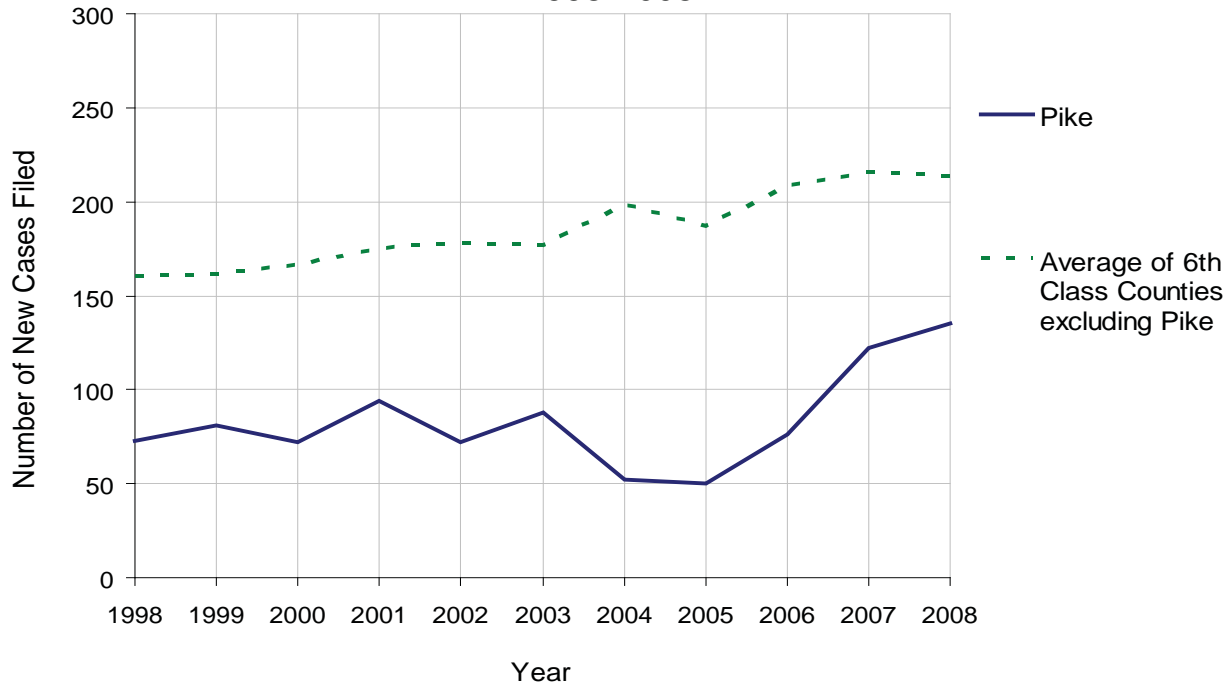
PIKE COUNTY

2008 Population Estimate: 59,664
 Class of County: 6th
 No. of Common Pleas Court Judgeships: 2



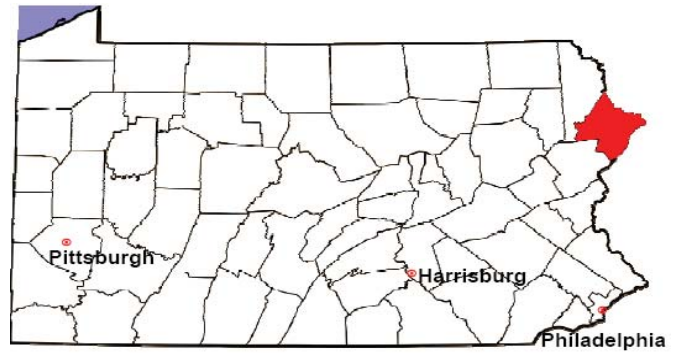
2008 Custody/Partial Custody/Visitation	No. of Petitions	%
Cases Pending 1/1/08	25	
New Cases Filed in '08	135	
Cases Available for Processing	160	
Processed By:		
Judge	16	18.2%
Non-Judicial Officer	71	80.7%
Other	1	1.1%
Cases Processed	88	100.0%
Cases Pending 12/31/08	72	

Custody/Partial Custody/Visitation New Cases Filed
 1998-2008



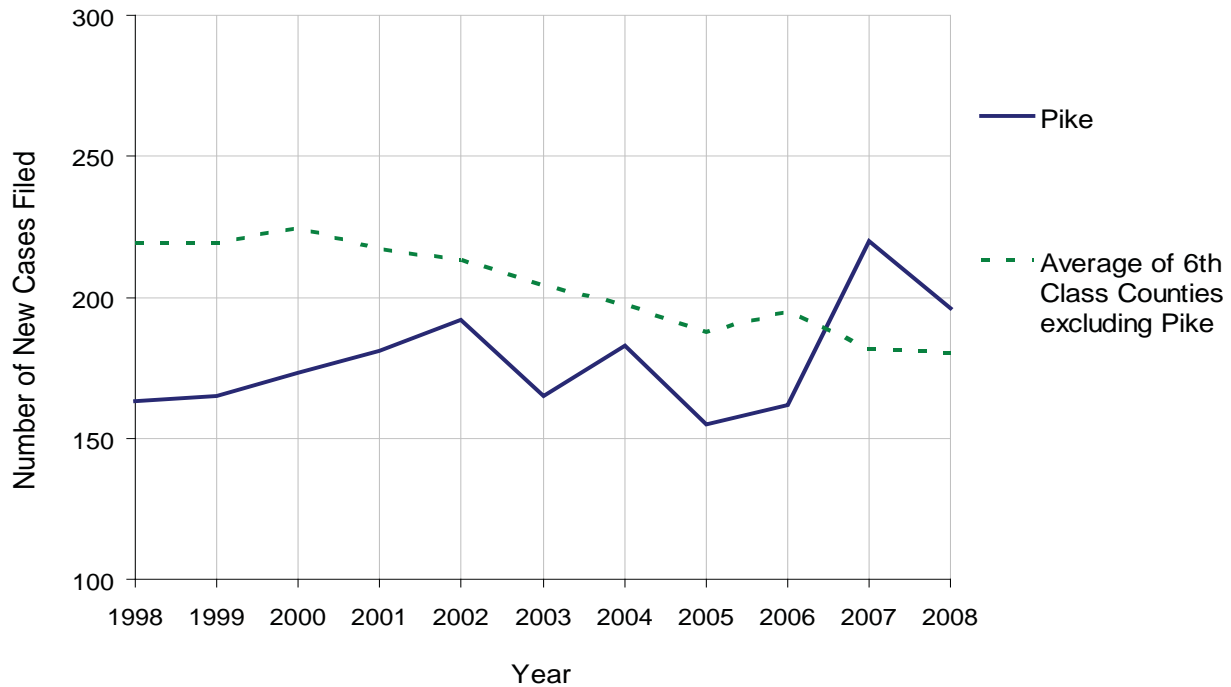
PIKE COUNTY

2008 Population Estimate: 59,664
 Class of County: 6th
 No. of Common Pleas Court Judgeships: 2



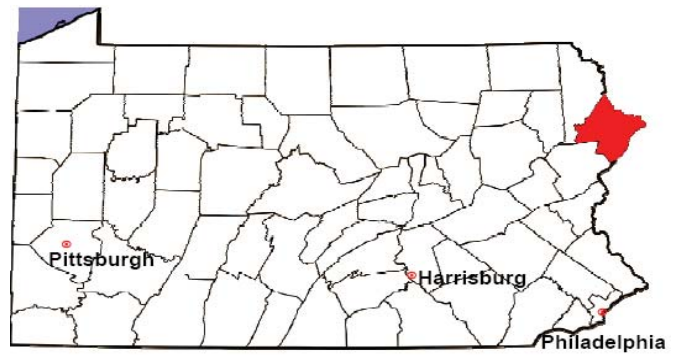
2008 Divorce	No. of Petitions	%
Cases Pending 1/1/08	161	
New Cases Filed in '08	196	
Cases Available for Processing	357	
Processed By:		
Contested Before a Judge	0	0.0%
Contested Before a Master	22	11.2%
Uncontested	133	67.9%
Other	41	20.9%
Cases Processed	196	100.0%
Cases Pending 12/31/08	161	

Divorce New Cases Filed, 1998-2008



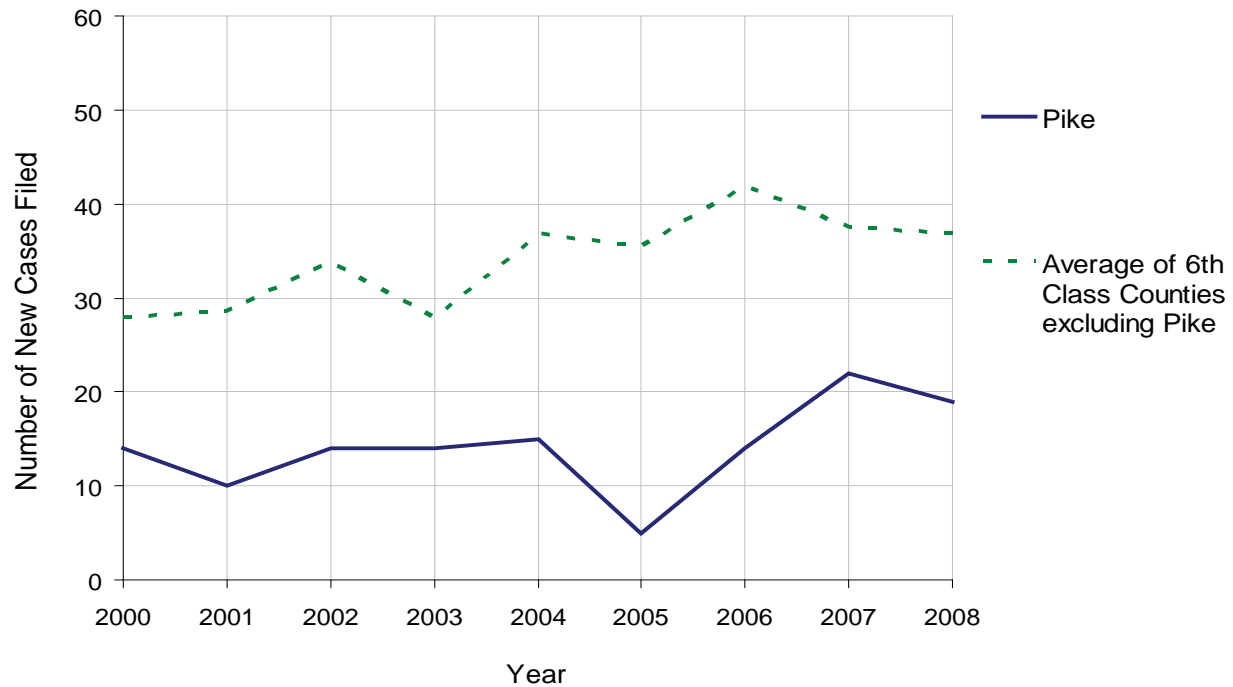
PIKE COUNTY

2008 Population Estimate: 59,664
 Class of County: 6th
 No. of Common Pleas Court Judgeships: 2



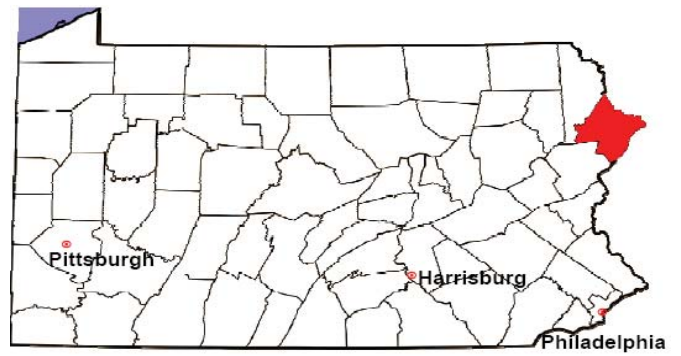
2008 Juvenile Dependency Abuse/Neglect	No. of Petitions	%
Cases Pending 1/1/08	0	
New Cases Filed in '08	19	
Cases Available for Processing	19	
Processed By:		
Judge	15	83.3%
Non-Judicial Officer	0	0.0%
Other	3	16.7%
Cases Processed	18	100.0%
Cases Pending 12/31/08	1	

Abuse/Neglect New Cases Filed, 2000-2008



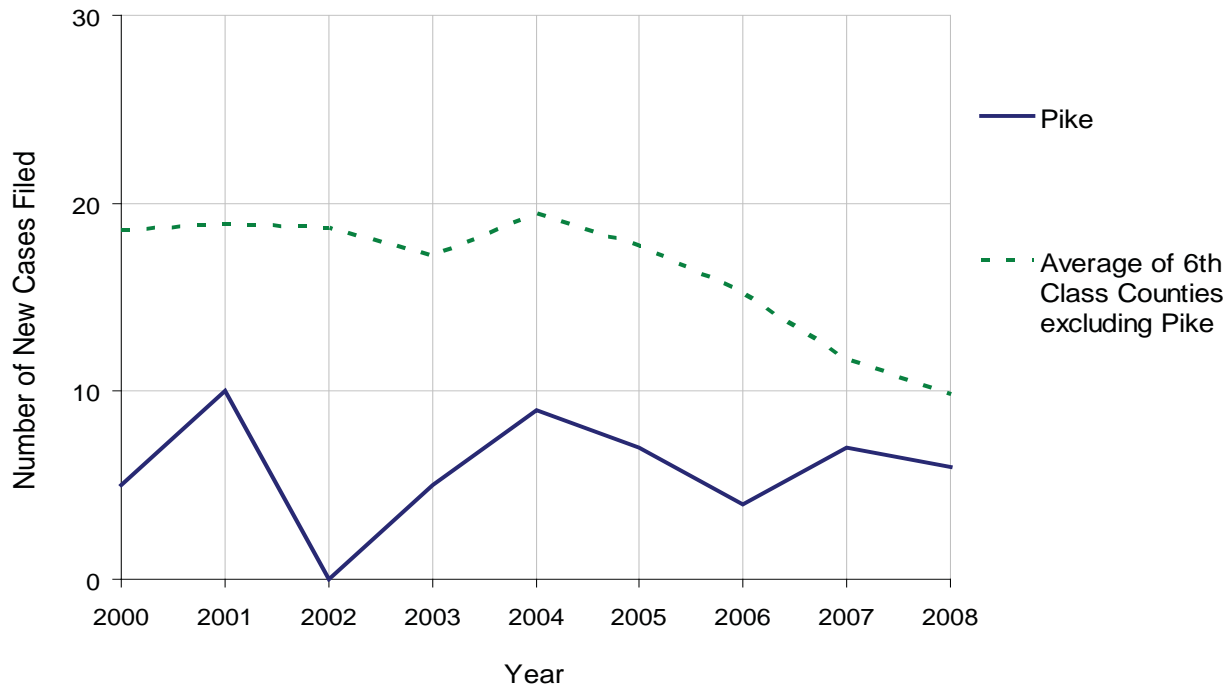
PIKE COUNTY

2008 Population Estimate: 59,664
 Class of County: 6th
 No. of Common Pleas Court Judgeships: 2



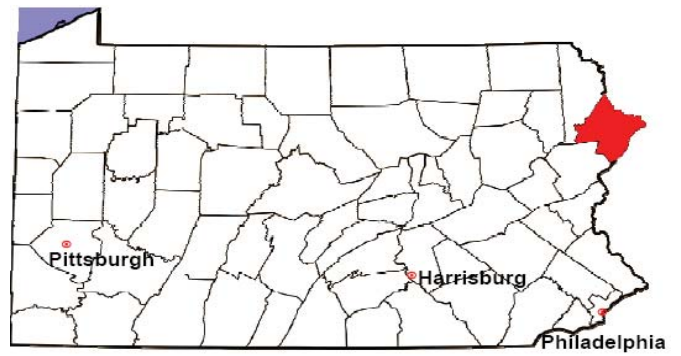
2008 Juvenile Dependency Status Offenses	No. of Petitions	%
Cases Pending 1/1/08	1	
New Cases Filed in '08	6	
Cases Available for Processing	7	
Processed By:		
Judge	6	100.0%
Non-Judicial Officer	0	0.0%
Other	0	0.0%
Cases Processed	6	100.0%
Cases Pending 12/31/08	1	

Status Offenses New Cases Filed, 2000-2008



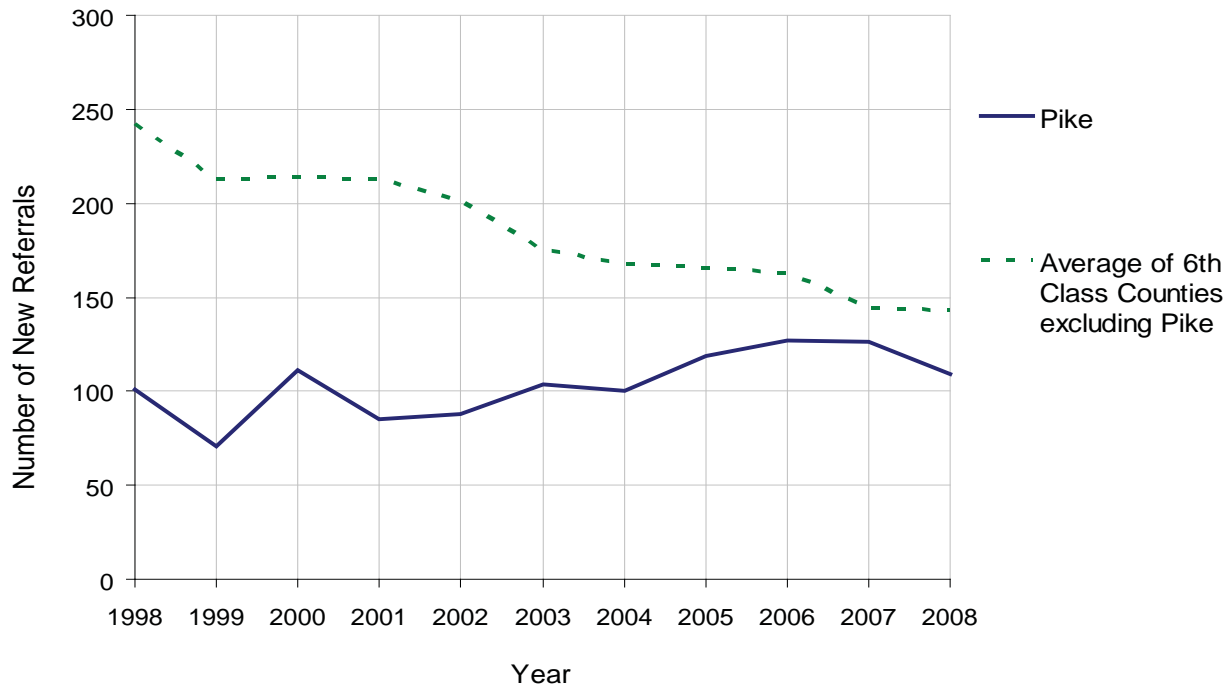
PIKE COUNTY

2008 Population Estimate: 59,664
 Class of County: 6th
 No. of Common Pleas Court Judgeships: 2



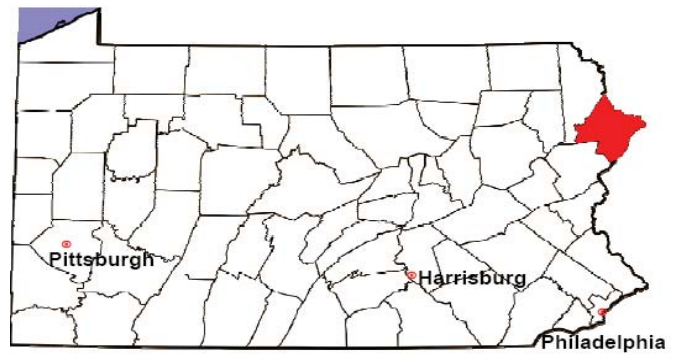
2008 Juvenile Delinquency	No. of Referrals	%
Cases Pending 1/1/08	17	
New Referrals in '08	109	
Cases Available for Processing	126	
Processed By:		
Judge	59	80.8%
Non-Judicial Officer	13	17.8%
Other	1	1.4%
Cases Processed	73	100.0%
Cases Pending 12/31/08	53	

Juvenile Delinquency New Referrals, 1998-2008



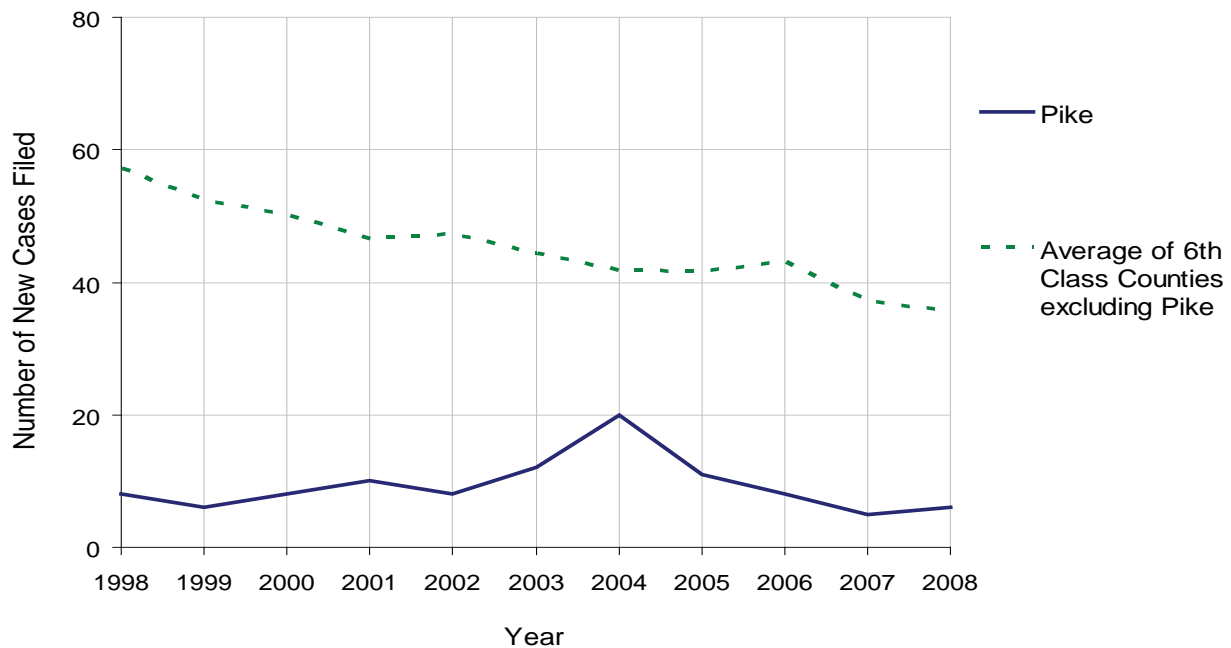
PIKE COUNTY

2008 Population Estimate: 59,664
 Class of County: 6th
 No. of Common Pleas Court Judgeships: 2



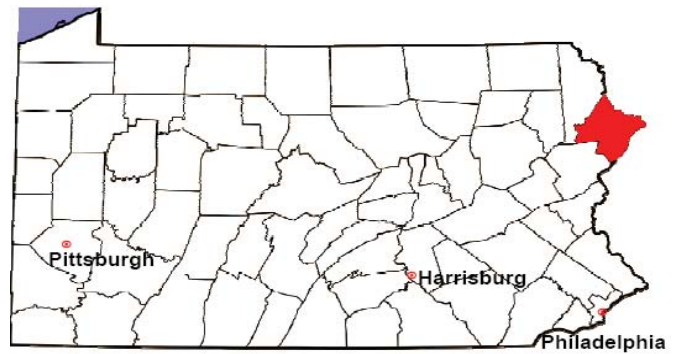
2008 Accounts	No. of Accounts	%
Cases Pending 1/1/08	10	
New Cases Filed in '08	6	
Cases Available for Processing	16	
Processed By:		
Contested before a Judge	0	0.0%
Contested before a Non-Judicial Officer	0	0.0%
Uncontested	10	100.0%
Other	0	0.0%
Cases Processed	10	100.0%
Cases Pending 12/31/08	6	

Accounts New Cases Filed, 1998-2008



PIKE COUNTY

2008 Population Estimate: 59,664
 Class of County: 6th
 No. of Common Pleas Court Judgeships: 2

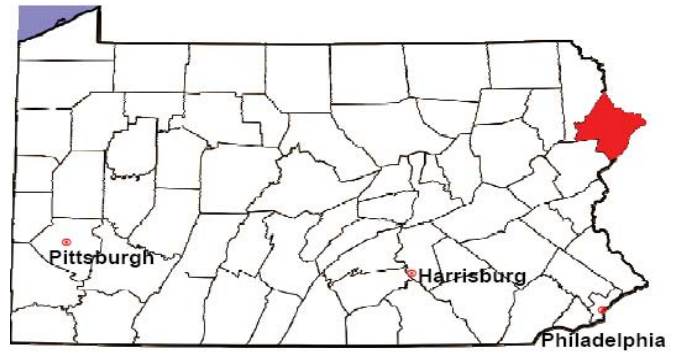


2008 Adoptions		No. of Cases	%
Cases Pending 1/1/08		6	
New Cases Filed in '08		16	
Cases Available for Processing		22	
Processed By:			
Contested before a Judge	Granted	0	0.0%
	Denied	0	0.0%
Uncontested	Granted	8	88.9%
	Denied	1	11.1%
Other		0	0.0%
Cases Processed		9	100.0%
Cases Pending 12/31/08		13	

Note: Prior to 2008, each petition was counted as one new case, regardless of the number of children listed on the petition. Starting in 2008, each child listed on a petition is counted as a separate case. Therefore, statistics for 2008 should not be compared with those for previous years.

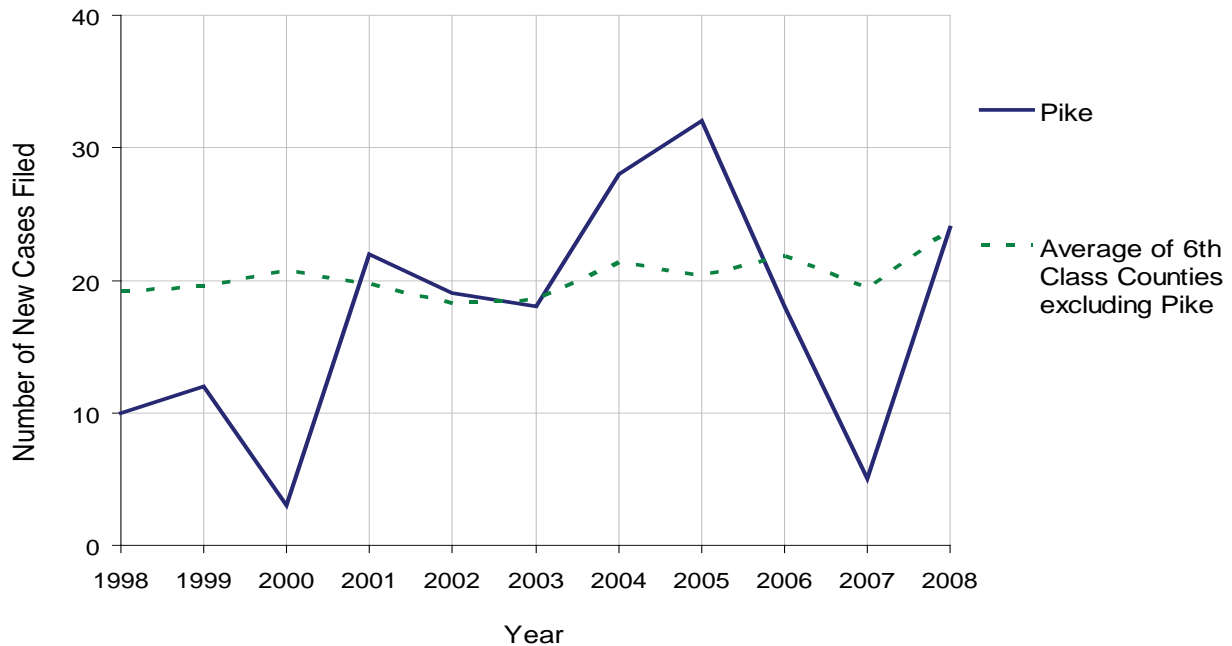
PIKE COUNTY

2008 Population Estimate: 59,664
 Class of County: 6th
 No. of Common Pleas Court Judgeships: 2



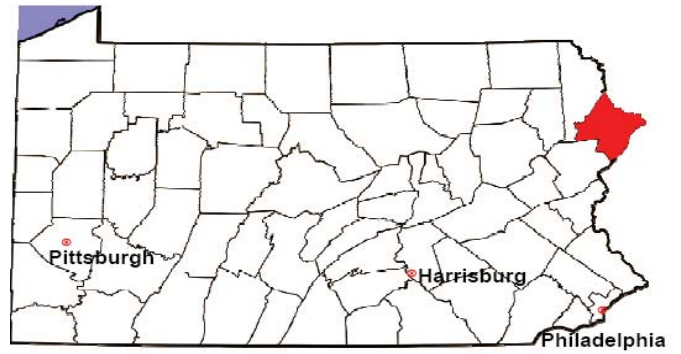
2008 Relinquishments/Terminations	No. of Petitions	%
Cases Pending 1/1/08	3	
New Cases Filed in '08	24	
Cases Available for Processing	27	
Processed By:		
Contested before a Judge	2	10.0%
Uncontested	18	90.0%
Other	0	0.0%
Cases Processed	20	100.0%
Cases Pending 12/31/08	7	

Relinquishments/Terminations New Cases Filed, 1998-2008



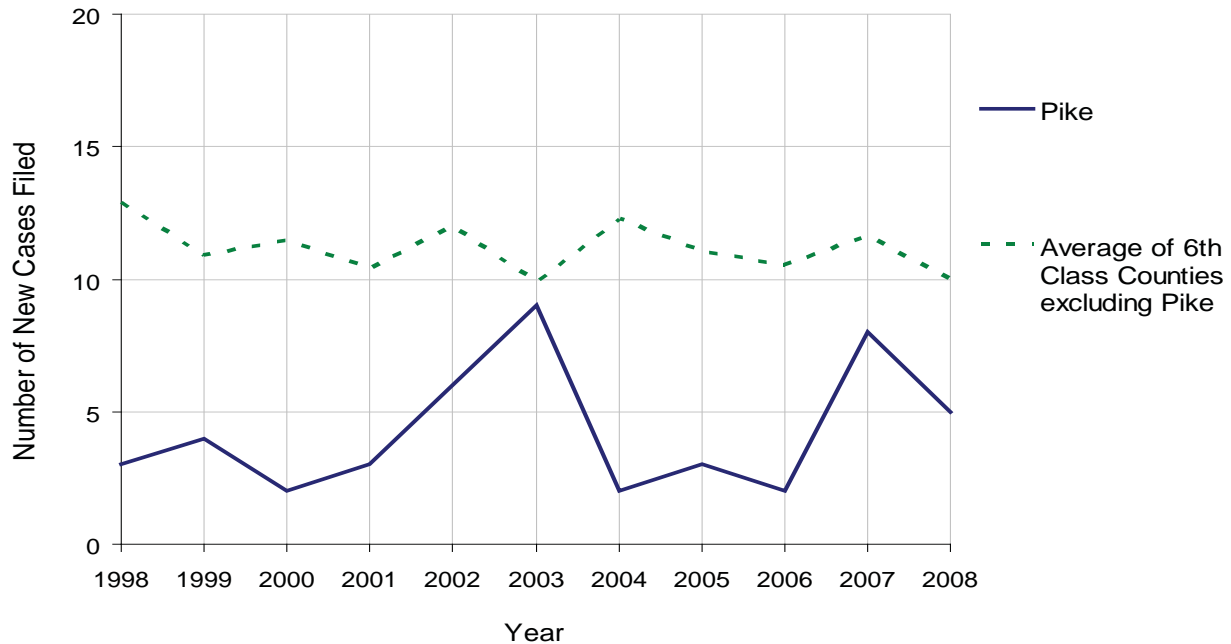
PIKE COUNTY

2008 Population Estimate: 59,664
 Class of County: 6th
 No. of Common Pleas Court Judgeships: 2



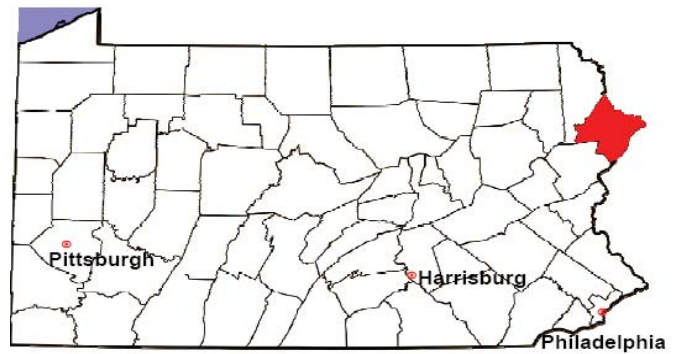
2008 Appointment of Guardians	No. of Petitions	%
Cases Pending 1/1/08	6	
New Cases Filed in '08	5	
Cases Available for Processing	11	
Processed By:		
Contested before a Judge	0	0.0%
Uncontested	3	60.0%
Other	2	40.0%
Cases Processed	5	100.0%
Cases Pending 12/31/08	6	

Appointment of Guardians New Cases Filed, 1998-2008



PIKE COUNTY

2008 Population Estimate: 59,664
 Class of County: 6th
 No. of Common Pleas Court Judgeships: 2



2008 Jury Activity & Performance Measures		
A. Juror Days	1,087	
B. Number Sent to Voir Dire	836	
Voir Dire Attendance Rate $(B/A * 100)$		76.9%
C. Number of Voir Dires Started	21	
Juror Days Per Voir Dire Starts (A/C)		52
D. Number of Jurors Selected	294	
Juror Selection Rate $(D/B * 100)$		35.2%
E. Number of Jury Trials Started	21	
Juror Days Per Trial Starts (A/E)		52
Number of Voir Dires Not Resulting in Trial $(C-E)$		0
Percent Voir Dires Not Resulting in Trial $(C-E)/C * 100$		0.0%
F. Pool Days	10	
G. Zero Panel Days	0	
Percent Zero Panel Days $(G/F * 100)$		0.0%
H. Total Juror Fees Incurred	\$26,265	
Average Juror Fees Per Trial (H/E)		\$1,251

Average Juror Fees Per Trial, 1998-2008

