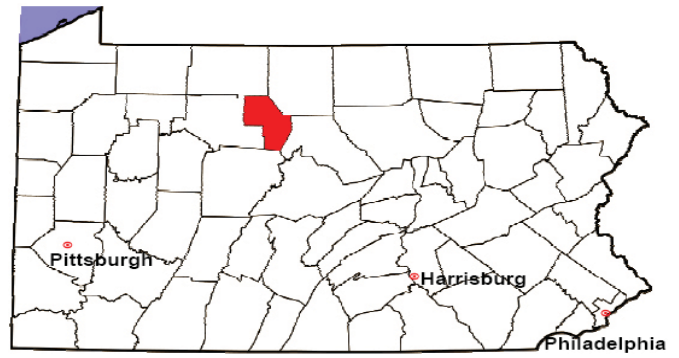


CAMERON COUNTY

2008 Population Estimate: 5,266

Class of County: 8th

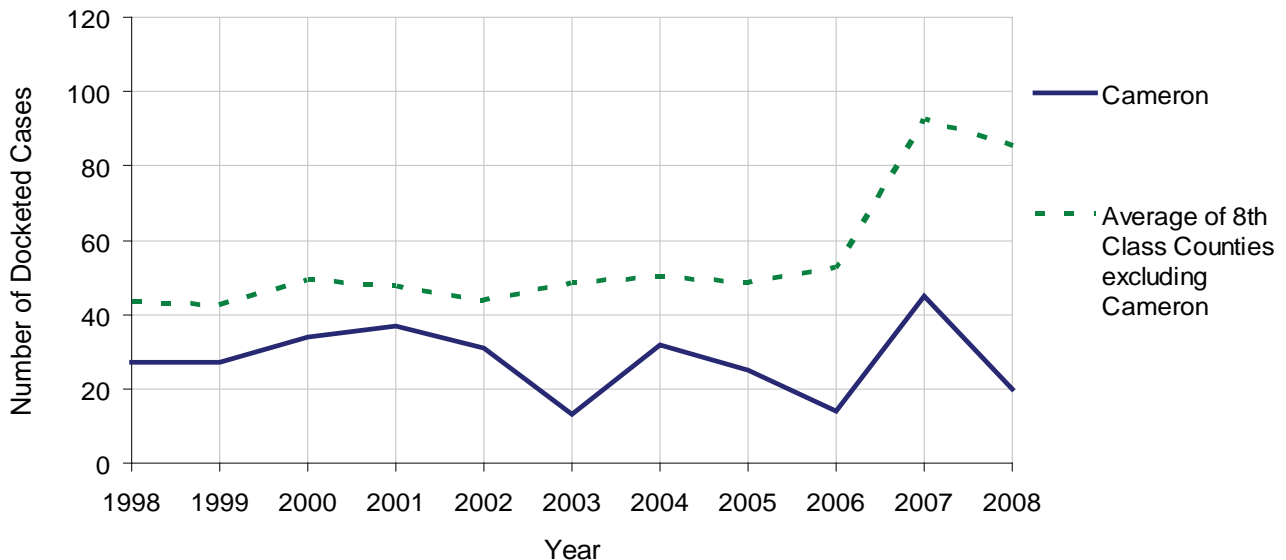
No. of Common Pleas Court Judgeships: 1
(Cameron and Elk combined)



2008 Civil		Civil Action		
Docketed Cases		20		
Arbitrated Cases		0		
Trial-Ready Cases:		Civil Action	Other	Total
Cases Pending 1/1/08		4	0	4
Became Trial Ready in '08		5	0	5
Restored to Trial List		0	0	0
Appeals from Arbitration		0	0	0
Cases Available for Trial		9	0	9
Disposed By:				
Settlement		2	0	2
Non-Jury Trial		3	0	3
Jury Trial		0	0	0
Stricken from Trial List		1	0	1
Other		0	0	0
Cases Disposed		6	0	6
Cases Pending 12/31/08		3	0	3

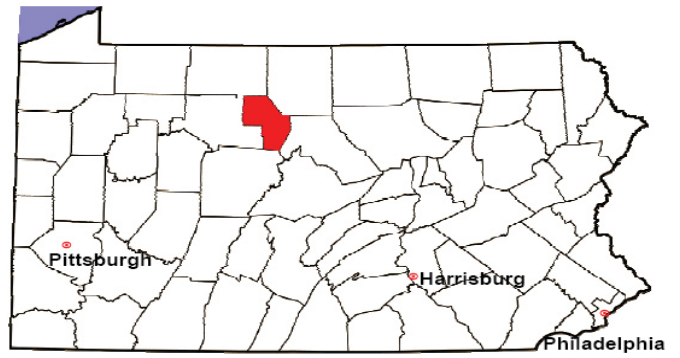
Age of Trial-Ready Cases as of 12/31/08 (Civil Action Only)		
0-6 months	2	67%
7-12 months	0	0%
13-18 months	0	0%
19-24 months	1	33%
25-30 months	0	0%
31-36 months	0	0%
Over 36 months	0	0%
Total	3	100%

Docketed Cases, 1998-2008



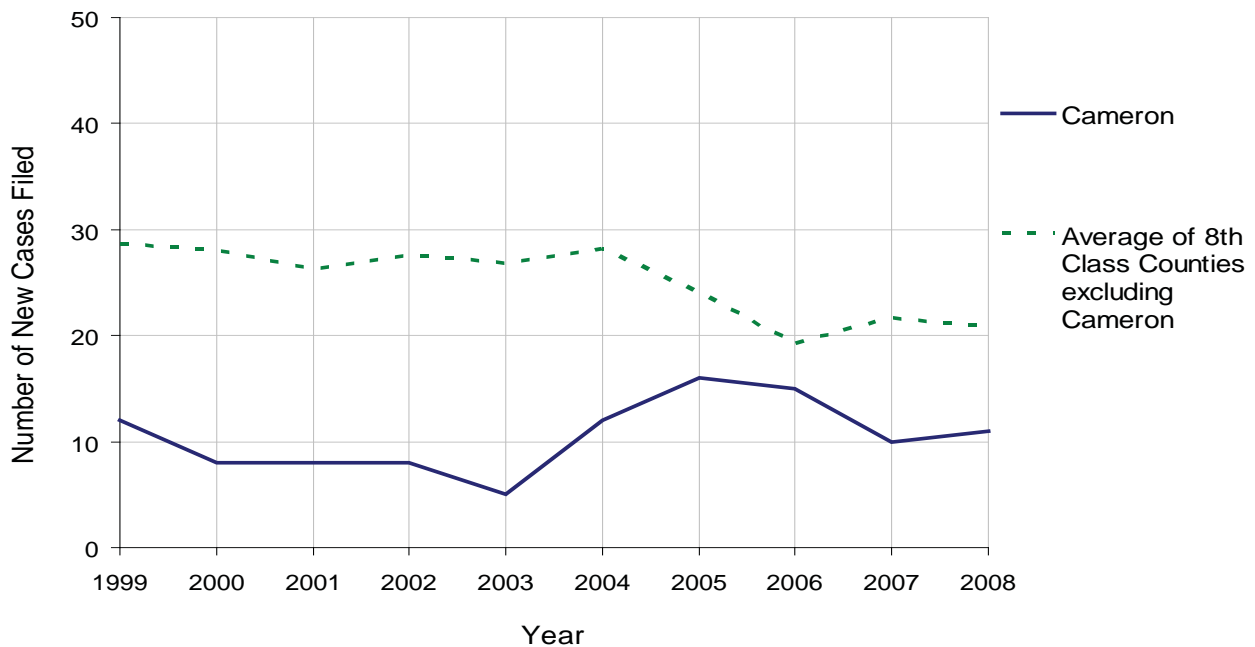
CAMERON COUNTY

2008 Population Estimate: 5,266
 Class of County: 8th
 No. of Common Pleas Court Judgeships: 1
 (Cameron and Elk combined)



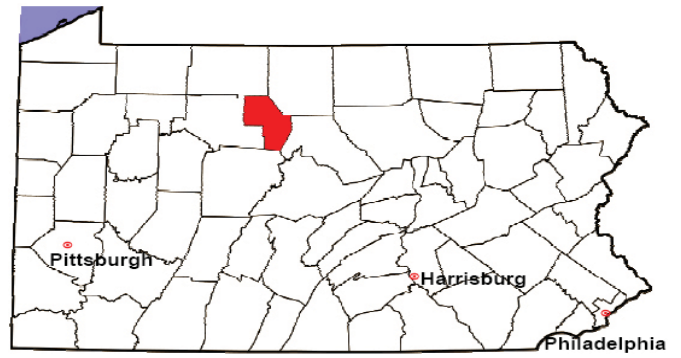
2008 Protection From Abuse	No. of Petitions	%
Cases Pending 1/1/08	0	
New Cases Filed in '08	11	
Cases Available for Processing	11	
Processed By:		
Final Order After Hearing	2	18.2%
Final Order by Stipulation or Agreement	6	54.5%
Dismissal	2	18.2%
Withdrawal	1	9.1%
Other	0	0.0%
Cases Processed	11	100.0%
Cases Pending 12/31/08	0	

PFA New Cases Filed, 1999-2008



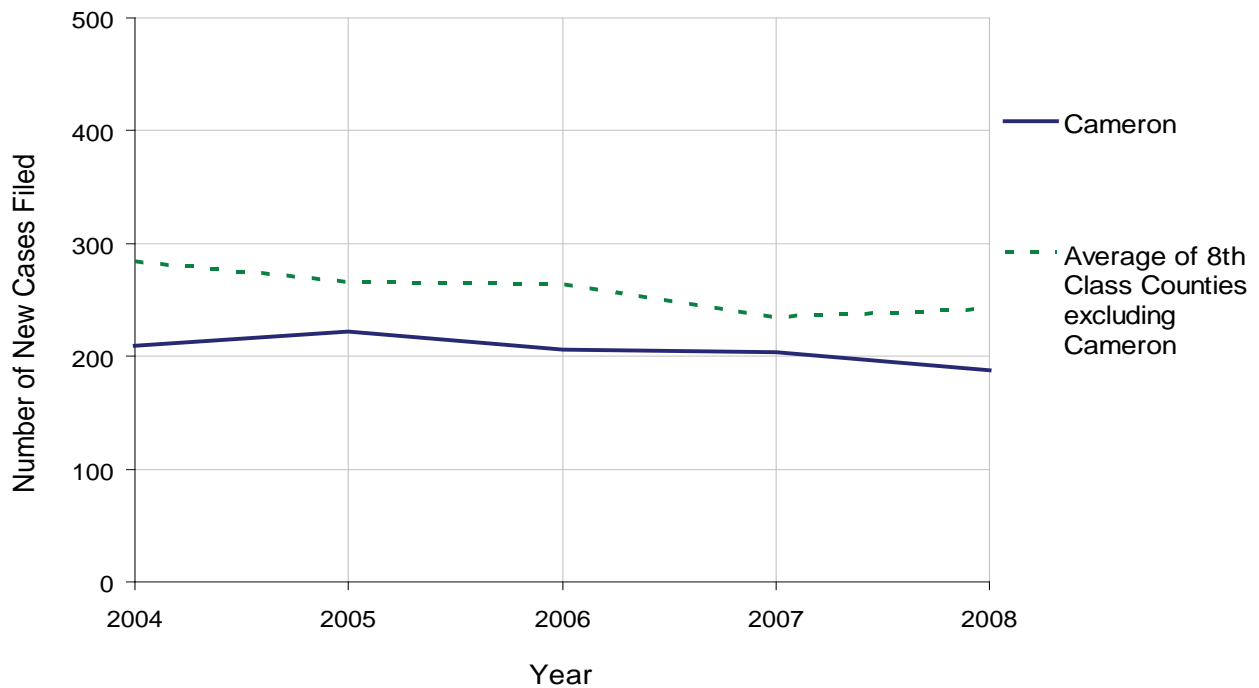
CAMERON COUNTY

2008 Population Estimate: 5,266
 Class of County: 8th
 No. of Common Pleas Court Judgeships: 1
 (Cameron and Elk combined)



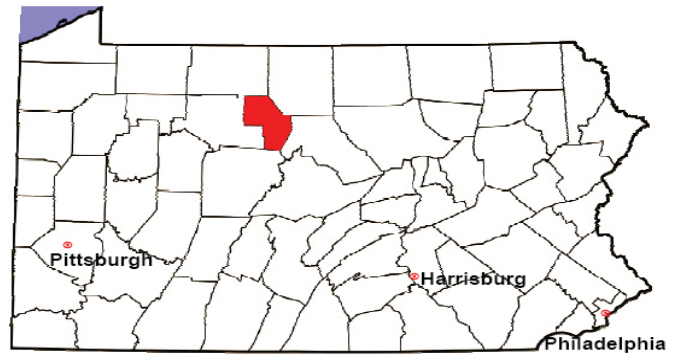
2008 Spousal & Child Support	No. of Petitions	%
Cases Pending 1/1/08	18	
New Cases Filed in '08	188	
Dockets Transferred In (+)	0	
Dockets Transferred Out (-)	1	
Cases Available for Processing	205	
Processed By:		
Judge	9	4.8%
Intake Officer	180	95.2%
Hearing Officer	0	0.0%
Other	0	0.0%
Cases Processed	189	100.0%
Cases Pending 12/31/08	16	

Spousal & Child Support New Cases Filed, 1998-2008



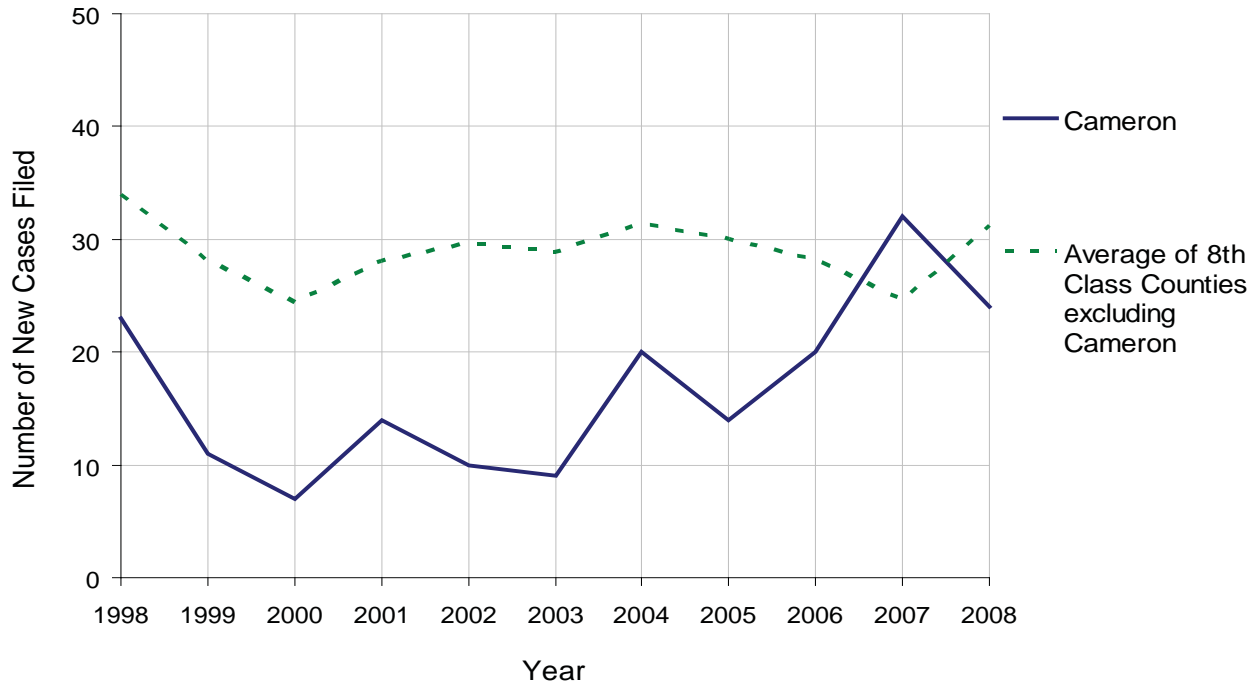
CAMERON COUNTY

2008 Population Estimate: 5,266
 Class of County: 8th
 No. of Common Pleas Court Judgeships: 1
 (Cameron and Elk combined)



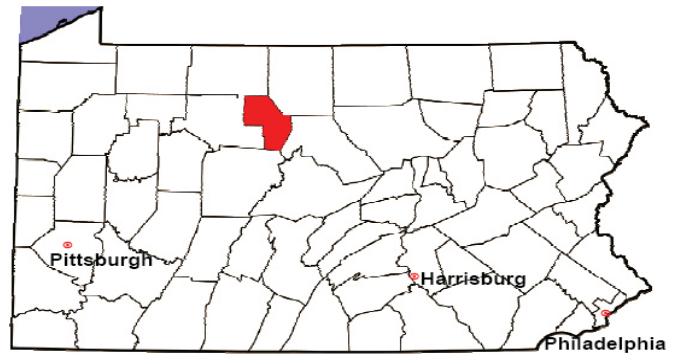
2008 Custody/Partial Custody/Visitation	No. of Petitions	%
Cases Pending 1/1/08	12	
New Cases Filed in '08	24	
Cases Available for Processing	36	
Processed By:		
Judge	2	6.3%
Non-Judicial Officer	16	50.0%
Other	14	43.8%
Cases Processed	32	100.0%
Cases Pending 12/31/08	4	

Custody/Partial Custody/Visitation New Cases Filed
 1998-2008



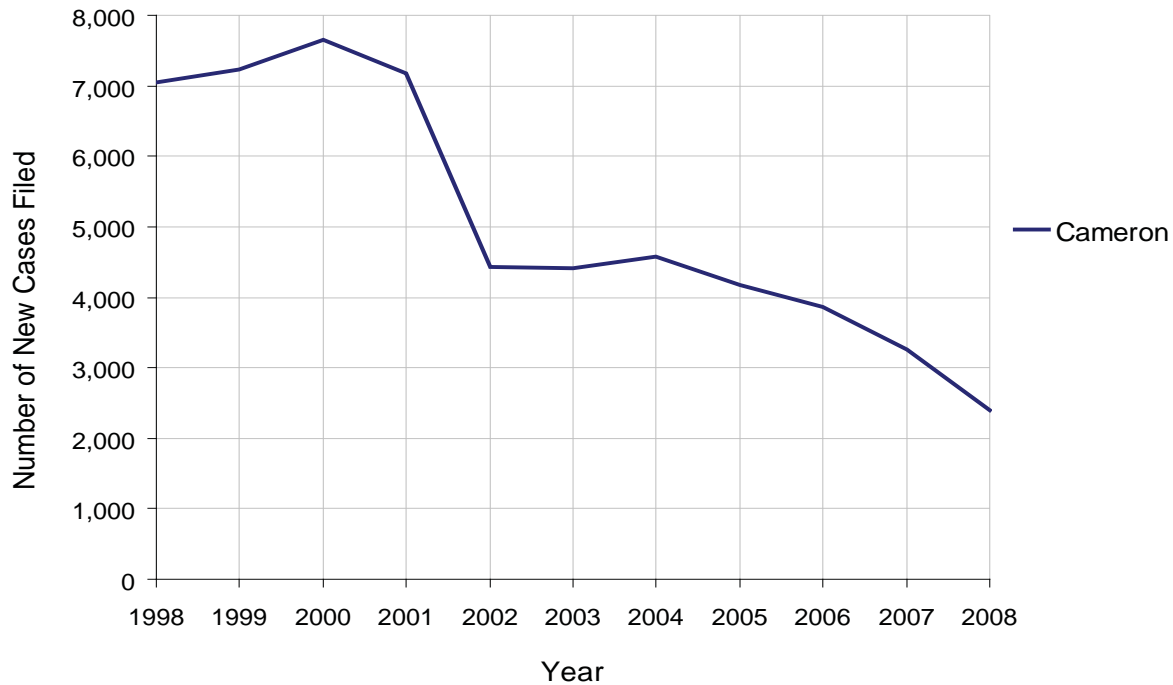
CAMERON COUNTY

2008 Population Estimate: 5,266
 Class of County: 8th
 No. of Common Pleas Court Judgeships: 1
 (Cameron and Elk combined)



2008 Divorce	No. of Petitions	%
Cases Pending 1/1/08	7,313	
New Cases Filed in '08	2,395	
Cases Available for Processing	9,708	
Processed By:		
Contested Before a Judge	0	0.0%
Contested Before a Master	0	0.0%
Uncontested	2,527	53.7%
Other	2,180	46.3%
Cases Processed	4,707	100.0%
Cases Pending 12/31/08	5,001	

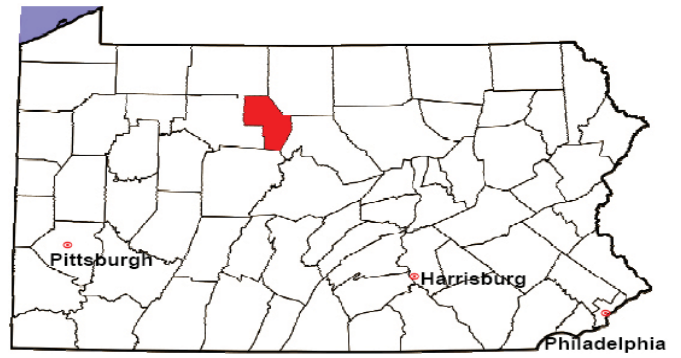
Divorce New Cases Filed, 1998-2008



* Due to a high number of out-of-district petitions, Cameron County has a larger inventory than other 8th class counties. Therefore, it is not meaningful to compare Cameron County with other 8th class counties in this chart.

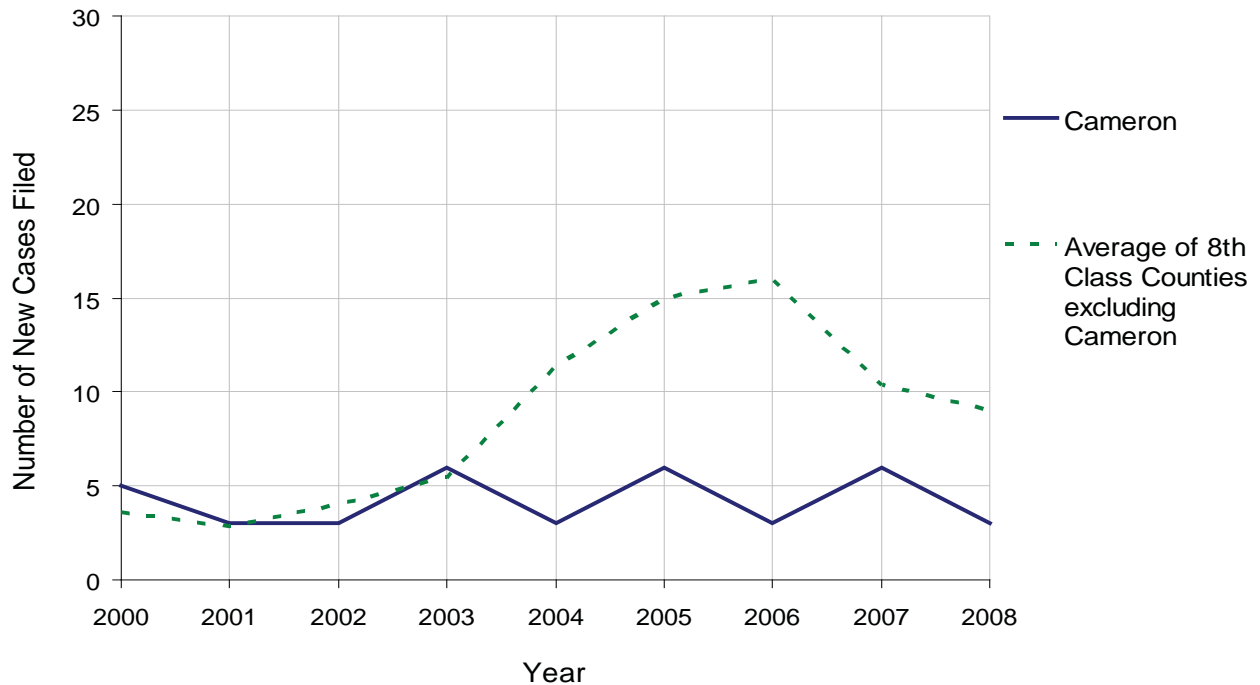
CAMERON COUNTY

2008 Population Estimate: 5,266
 Class of County: 8th
 No. of Common Pleas Court Judgeships: 1
 (Cameron and Elk combined)



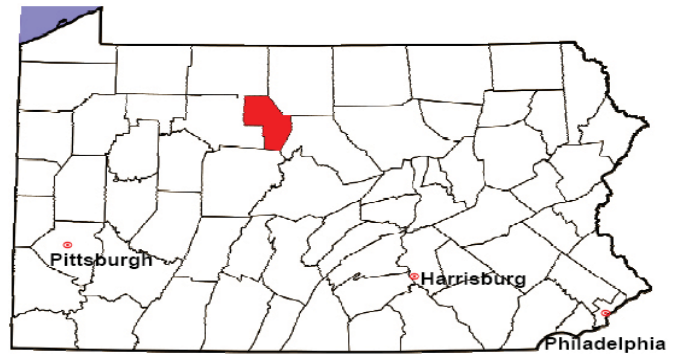
2008 Juvenile Dependency Abuse/Neglect	No. of Petitions	%
Cases Pending 1/1/08	0	
New Cases Filed in '08	3	
Cases Available for Processing	3	
Processed By:		
Judge	3	100.0%
Non-Judicial Officer	0	0.0%
Other	0	0.0%
Cases Processed	3	100.0%
Cases Pending 12/31/08	0	

Abuse/Neglect New Cases Filed, 2000-2008



CAMERON COUNTY

2008 Population Estimate: 5,266
Class of County: 8th
No. of Common Pleas Court Judgeships: 1
(Cameron and Elk combined)



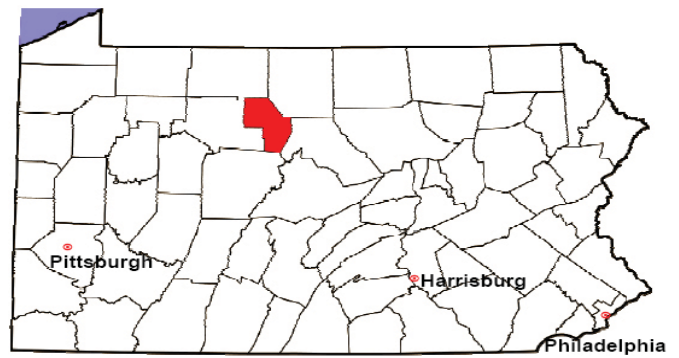
2008 Juvenile Dependency Status Offenses

Not Applicable:

In some counties, status offense petitions are not filed.

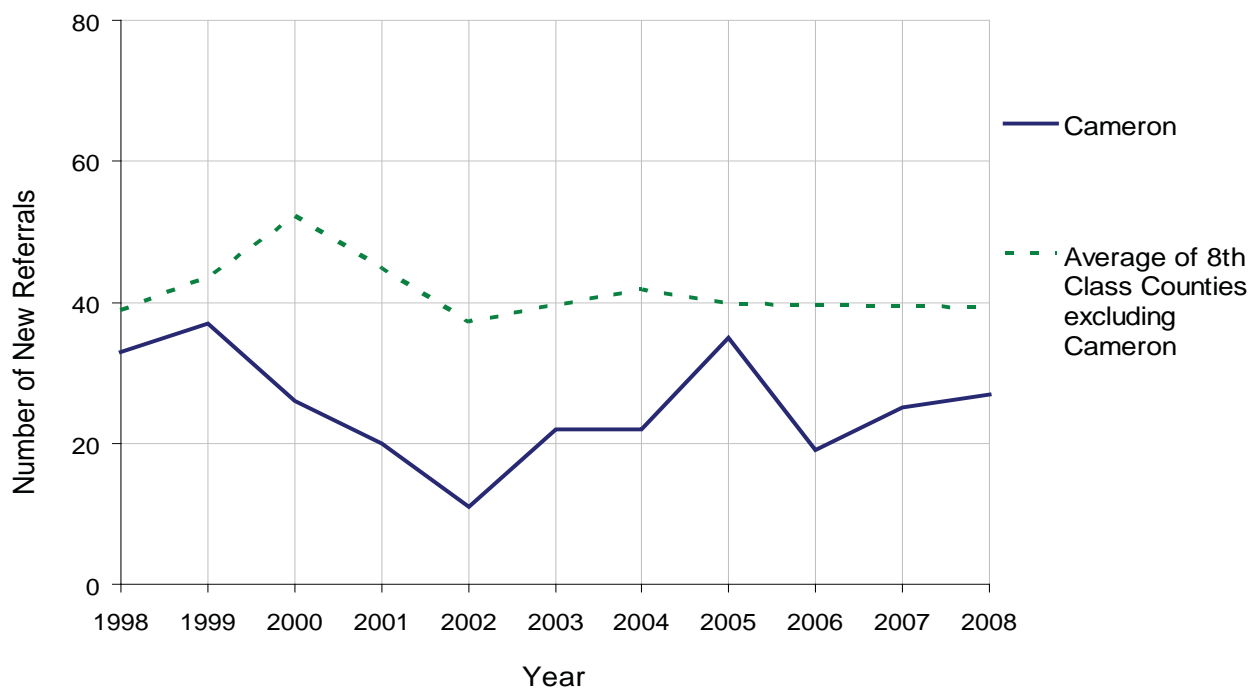
CAMERON COUNTY

2008 Population Estimate: 5,266
 Class of County: 8th
 No. of Common Pleas Court Judgeships: 1
 (Cameron and Elk combined)



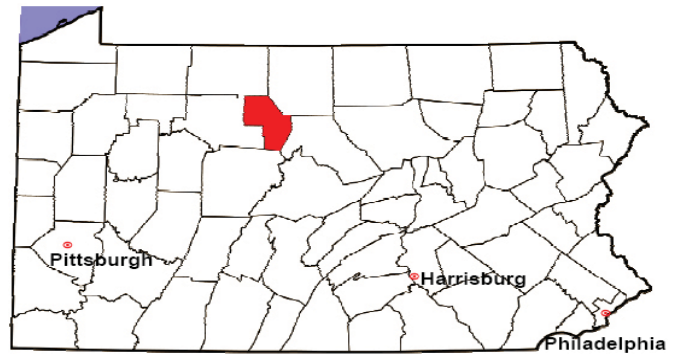
2008 Juvenile Delinquency	No. of Referrals	%
Cases Pending 1/1/08	10	
New Referrals in '08	27	
Cases Available for Processing	37	
Processed By:		
Judge	12	37.5%
Non-Judicial Officer	11	34.4%
Other	9	28.1%
Cases Processed	32	100.0%
Cases Pending 12/31/08	5	

Juvenile Delinquency New Referrals, 1998-2008



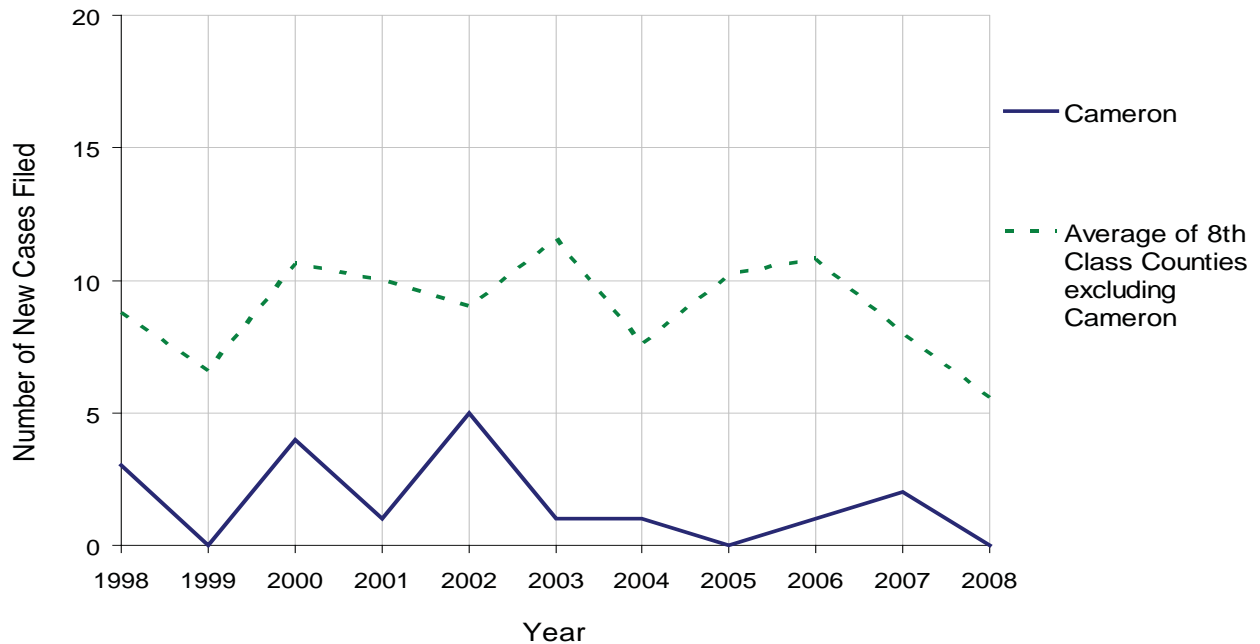
CAMERON COUNTY

2008 Population Estimate: 5,266
 Class of County: 8th
 No. of Common Pleas Court Judgeships: 1
 (Cameron and Elk combined)



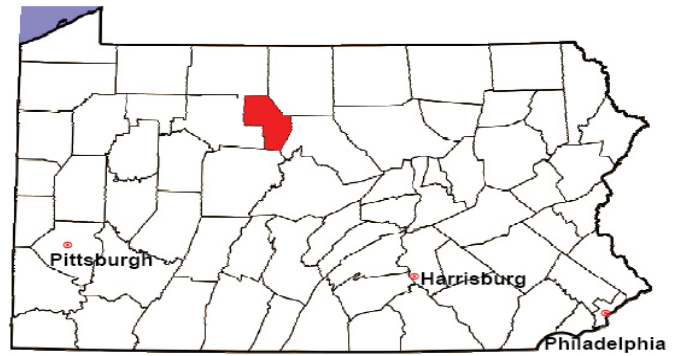
2008 Accounts	No. of Accounts	%
Cases Pending 1/1/08	2	
New Cases Filed in '08	0	
Cases Available for Processing	2	
Processed By:		
Contested before a Judge	1	100.0%
Contested before a Non-Judicial Officer	0	0.0%
Uncontested	0	0.0%
Other	0	0.0%
Cases Processed	1	100.0%
Cases Pending 12/31/08	1	

Accounts New Cases Filed, 1998-2008



CAMERON COUNTY

2008 Population Estimate: 5,266
 Class of County: 8th
 No. of Common Pleas Court Judgeships: 1
 (Cameron and Elk combined)

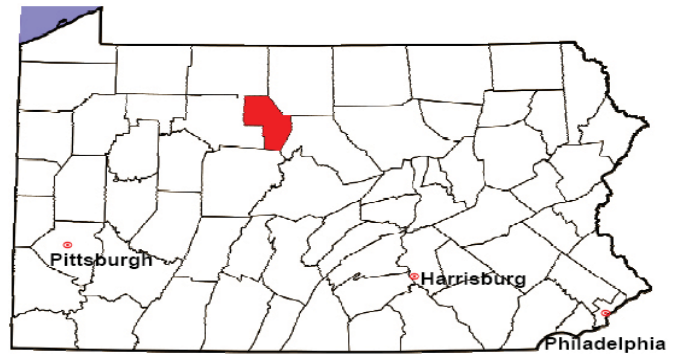


2008 Adoptions		No. of Cases	%
Cases Pending 1/1/08		1	
New Cases Filed in '08		2	
Cases Available for Processing		3	
Processed By:			
Contested before a Judge	Granted	0	0.0%
	Denied	0	0.0%
Uncontested	Granted	2	100.0%
	Denied	0	0.0%
Other		0	0.0%
Cases Processed		2	100.0%
Cases Pending 12/31/08		1	

Note: Prior to 2008, each petition was counted as one new case, regardless of the number of children listed on the petition. Starting in 2008, each child listed on a petition is counted as a separate case. Therefore, statistics for 2008 should not be compared with those for previous years.

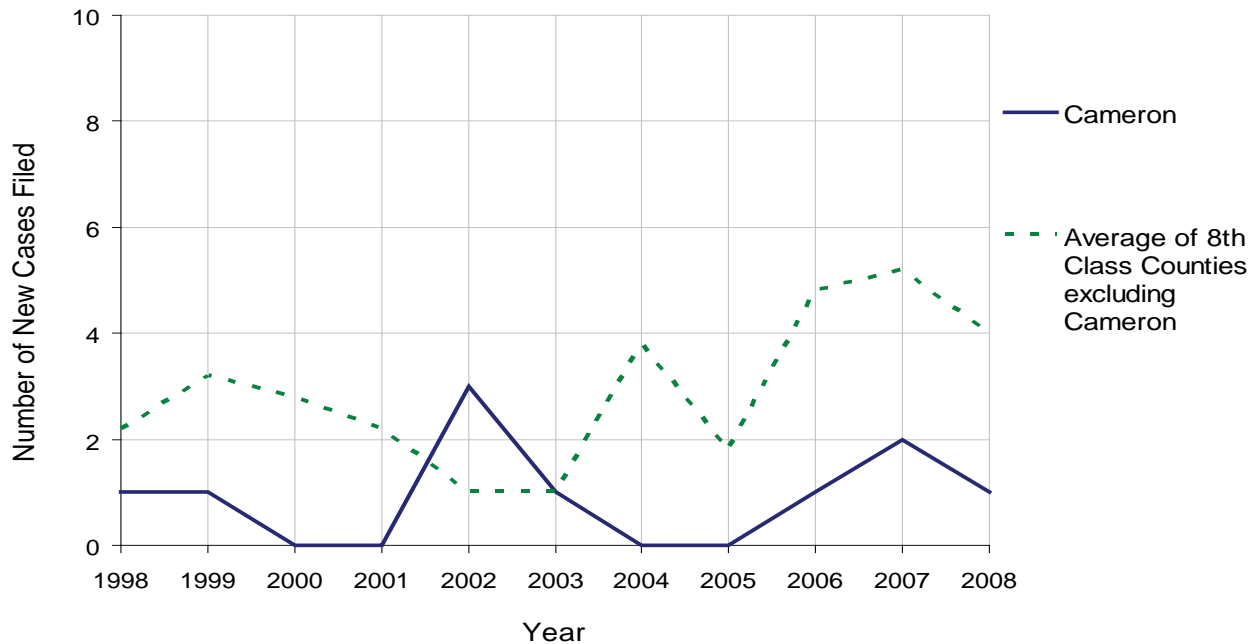
CAMERON COUNTY

2008 Population Estimate: 5,266
 Class of County: 8th
 No. of Common Pleas Court Judgeships: 1
 (Cameron and Elk combined)



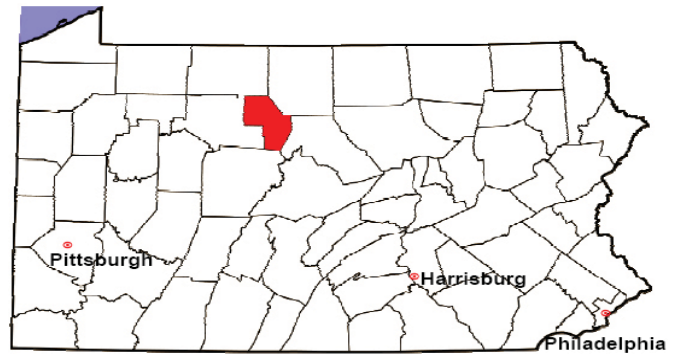
2008 Relinquishments/Terminations	No. of Petitions	%
Cases Pending 1/1/08	1	
New Cases Filed in '08	1	
Cases Available for Processing	2	
Processed By:		
Contested before a Judge	0	0.0%
Uncontested	2	100.0%
Other	0	0.0%
Cases Processed	2	100.0%
Cases Pending 12/31/08	0	

Relinquishments/Terminations New Cases Filed, 1998-2008



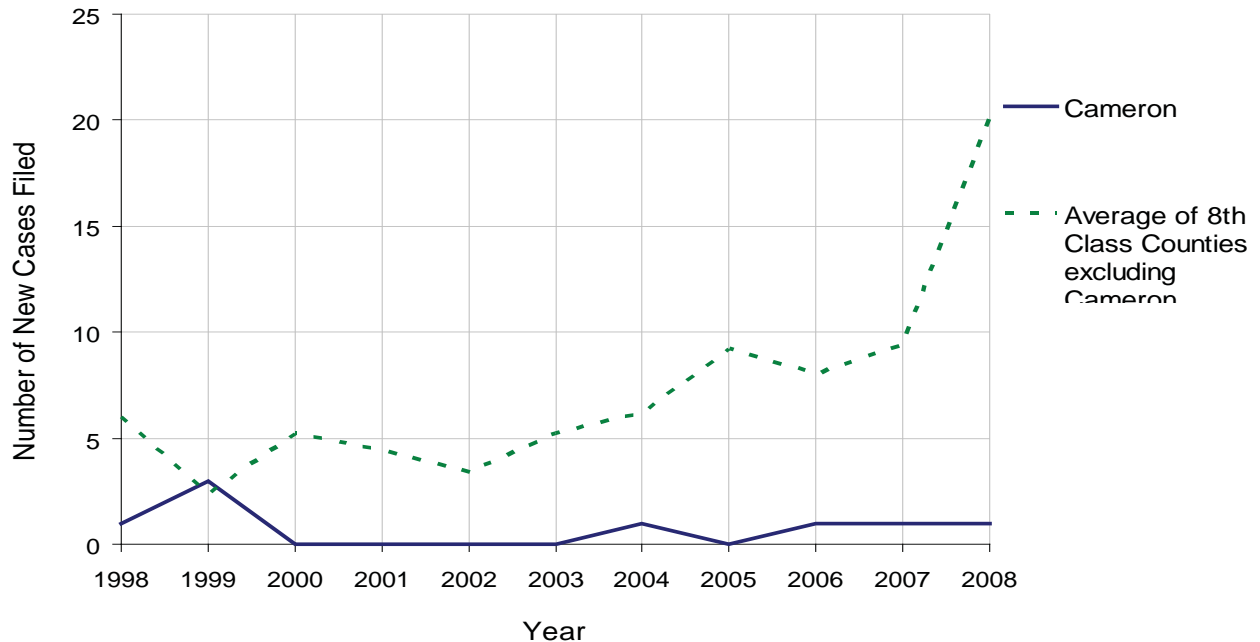
CAMERON COUNTY

2008 Population Estimate: 5,266
 Class of County: 8th
 No. of Common Pleas Court Judgeships: 1
 (Cameron and Elk combined)



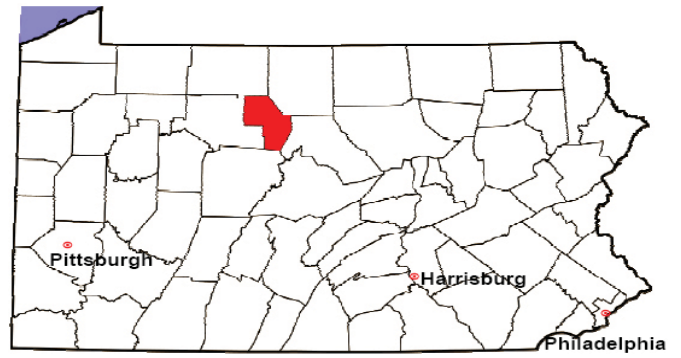
2008 Appointment of Guardians	No. of Petitions	%
Cases Pending 1/1/08	1	
New Cases Filed in '08	1	
Cases Available for Processing	2	
Processed By:		
Contested before a Judge	0	0.0%
Uncontested	1	50.0%
Other	1	50.0%
Cases Processed	2	100.0%
Cases Pending 12/31/08	0	

Appointment of Guardians New Cases Filed, 1998-2008



CAMERON COUNTY

2008 Population Estimate: 5,266
 Class of County: 8th
 No. of Common Pleas Court Judgeships: 1
 (Cameron and Elk combined)



2008 Jury Activity & Performance Measures		
A. Juror Days	209	
B. Number Sent to Voir Dire	139	
Voir Dire Attendance Rate $(B/A * 100)$		66.5%
C. Number of Voir Dires Started	5	
Juror Days Per Voir Dire Starts (A/C)		42
D. Number of Jurors Selected	56	
Juror Selection Rate $(D/B * 100)$		40.3%
E. Number of Jury Trials Started	2	
Juror Days Per Trial Starts (A/E)		105
Number of Voir Dires Not Resulting in Trial $(C-E)$		3
Percent Voir Dires Not Resulting in Trial $(C-E)/C * 100$		60.0%
F. Pool Days	1	
G. Zero Panel Days	0	
Percent Zero Panel Days $(G/F * 100)$		0.0%
H. Total Juror Fees Incurred	\$2,563	
Average Juror Fees Per Trial (H/E)		\$1,282

Average Juror Fees Per Trial, 1998-2008

