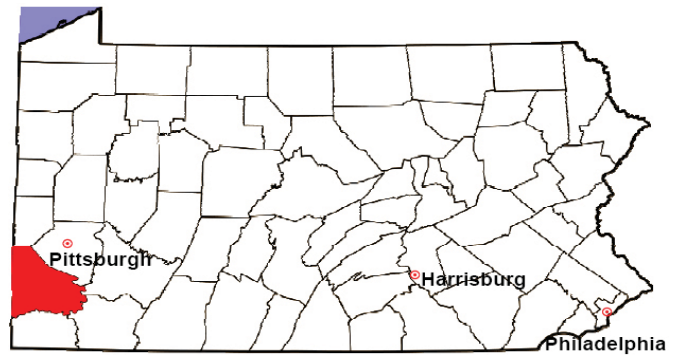


WASHINGTON COUNTY

2008 Population Estimate: 206,407

Class of County: 4th

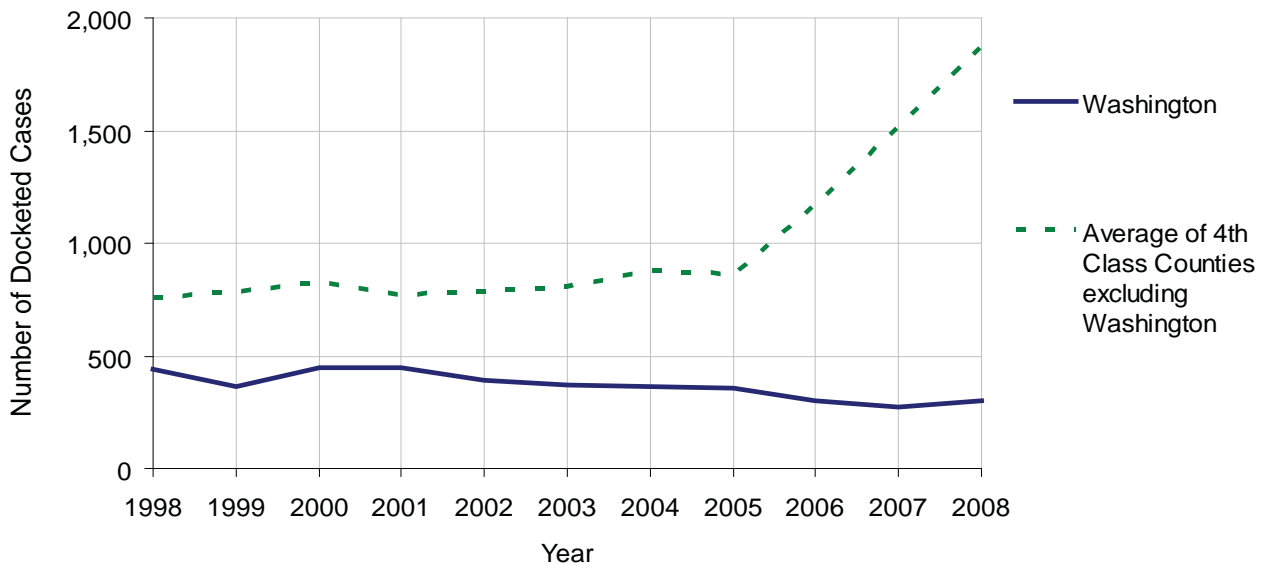
No. of Common Pleas Court Judgeships: 6



2008 Civil		Civil Action		
Docketed Cases		299		
Arbitrated Cases		138		
Trial-Ready Cases:		Civil Action	Other	Total
Cases Pending 1/1/08		198	83	281
Became Trial Ready in '08		228	850	1,078
Restored to Trial List		4	0	4
Appeals from Arbitration		45	0	45
Cases Available for Trial		475	933	1,408
Disposed By:				
Settlement		171	773	944
Non-Jury Trial		17	25	42
Jury Trial		12	0	12
Stricken from Trial List		18	0	18
Other		0	69	69
Cases Disposed		218	867	1,085
Cases Pending 12/31/08		257	66	323

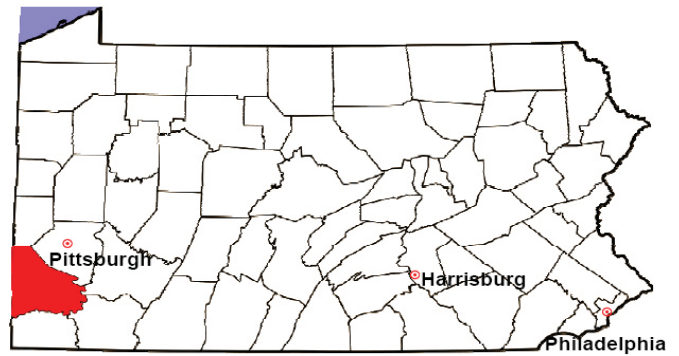
Age of Trial-Ready Cases as of 12/31/08 (Civil Action Only)		
0-6 months	173	67%
7-12 months	41	16%
13-18 months	23	9%
19-24 months	11	4%
25-30 months	4	2%
31-36 months	1	0%
Over 36 months	4	2%
Total	257	100%

Docketed Cases, 1998-2008



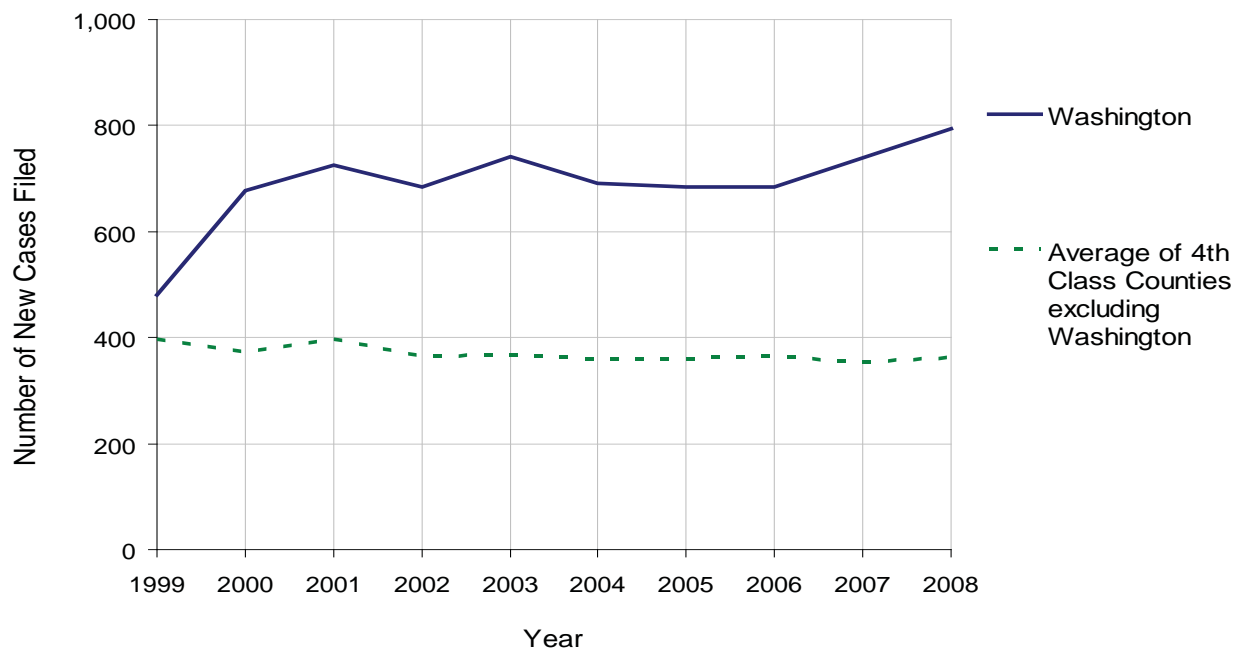
WASHINGTON COUNTY

2008 Population Estimate: 206,407
 Class of County: 4th
 No. of Common Pleas Court Judgeships: 6



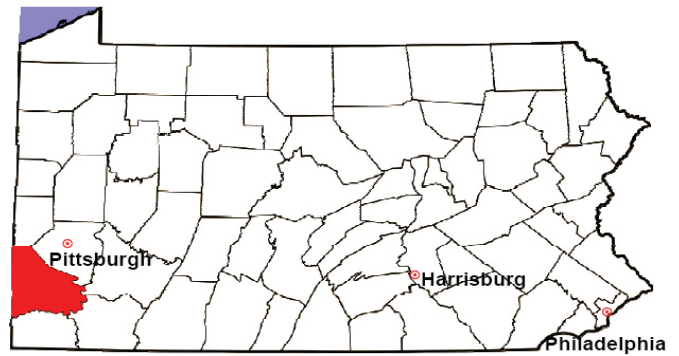
2008 Protection From Abuse	No. of Petitions	%
Cases Pending 1/1/08	35	
New Cases Filed in '08	794	
Cases Available for Processing	829	
Processed By:		
Final Order After Hearing	127	16.8%
Final Order by Stipulation or Agreement	248	32.8%
Dismissal	274	36.2%
Withdrawal	86	11.4%
Other	21	2.8%
Cases Processed	756	100.0%
Cases Pending 12/31/08	73	

PFA New Cases Filed, 1999-2008



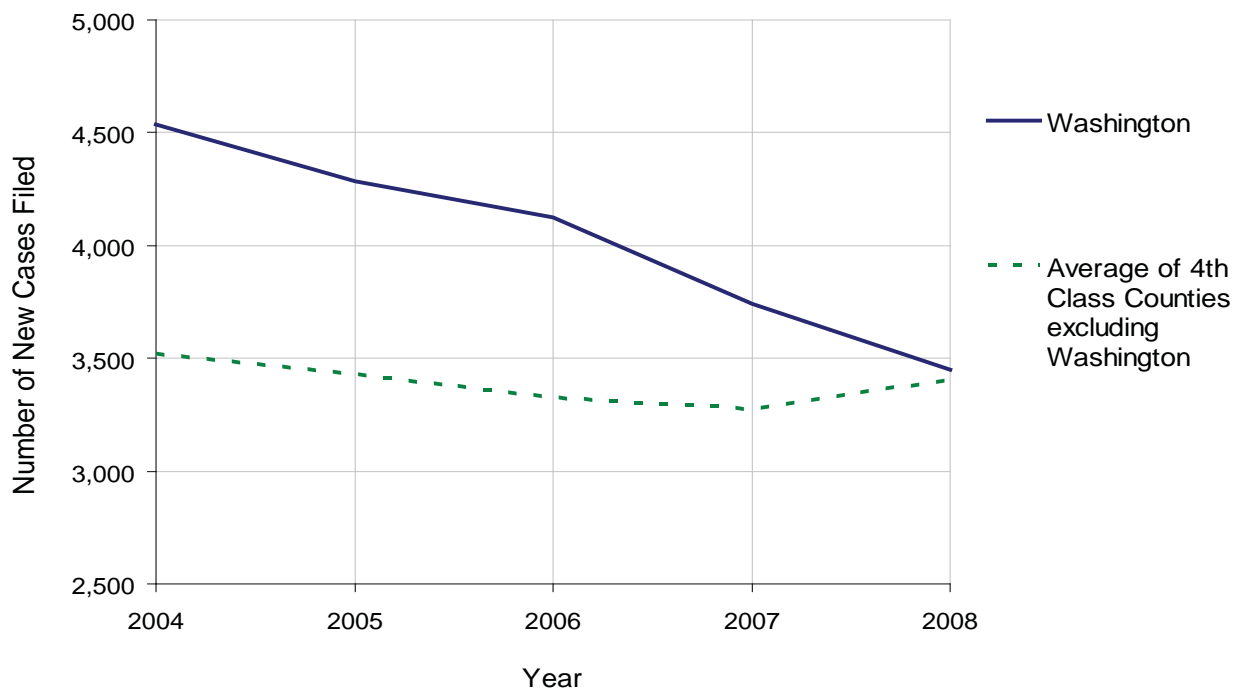
WASHINGTON COUNTY

2008 Population Estimate: 206,407
 Class of County: 4th
 No. of Common Pleas Court Judgeships: 6



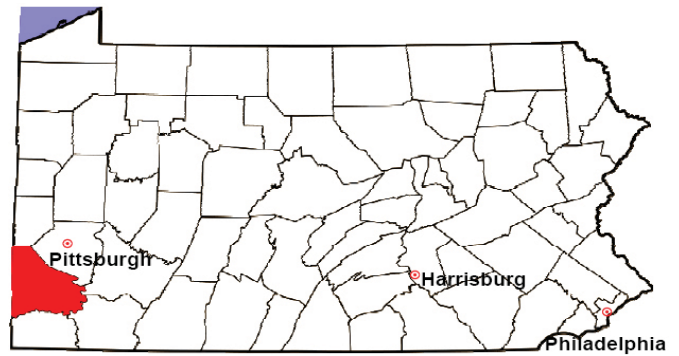
2008 Spousal & Child Support	No. of Petitions	%
Cases Pending 1/1/08	723	
New Cases Filed in '08	3,447	
Dockets Transferred In (+)	38	
Dockets Transferred Out (-)	48	
Cases Available for Processing	4,160	
Processed By:		
Judge	40	1.1%
Intake Officer	3,318	92.8%
Hearing Officer	215	6.0%
Other	3	0.1%
Cases Processed	3,576	100.0%
Cases Pending 12/31/08	584	

Spousal & Child Support New Cases Filed, 1998-2008



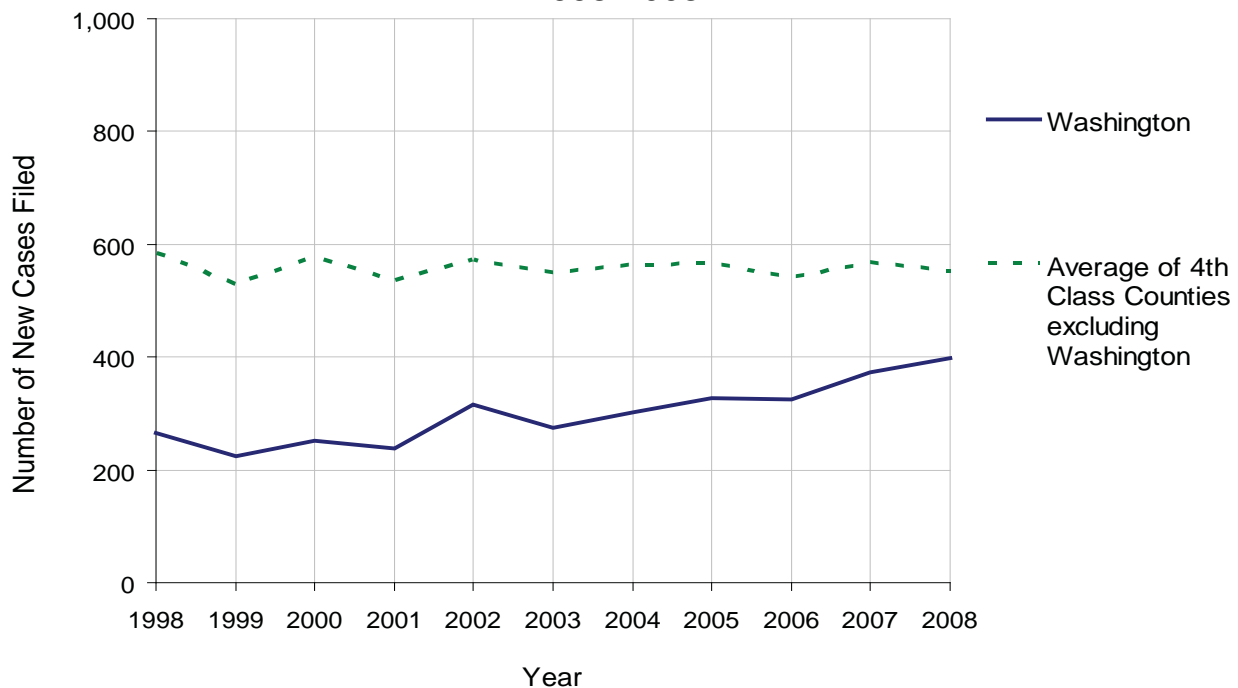
WASHINGTON COUNTY

2008 Population Estimate: 206,407
 Class of County: 4th
 No. of Common Pleas Court Judgeships: 6



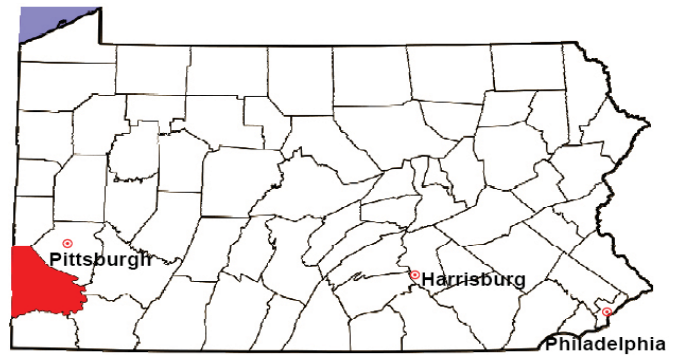
2008 Custody/Partial Custody/Visitation	No. of Petitions	%
Cases Pending 1/1/08	202	
New Cases Filed in '08	399	
Cases Available for Processing	601	
Processed By:		
Judge	60	19.5%
Non-Judicial Officer	193	62.7%
Other	55	17.9%
Cases Processed	308	100.0%
Cases Pending 12/31/08	293	

Custody/Partial Custody/Visitation New Cases Filed
 1998-2008



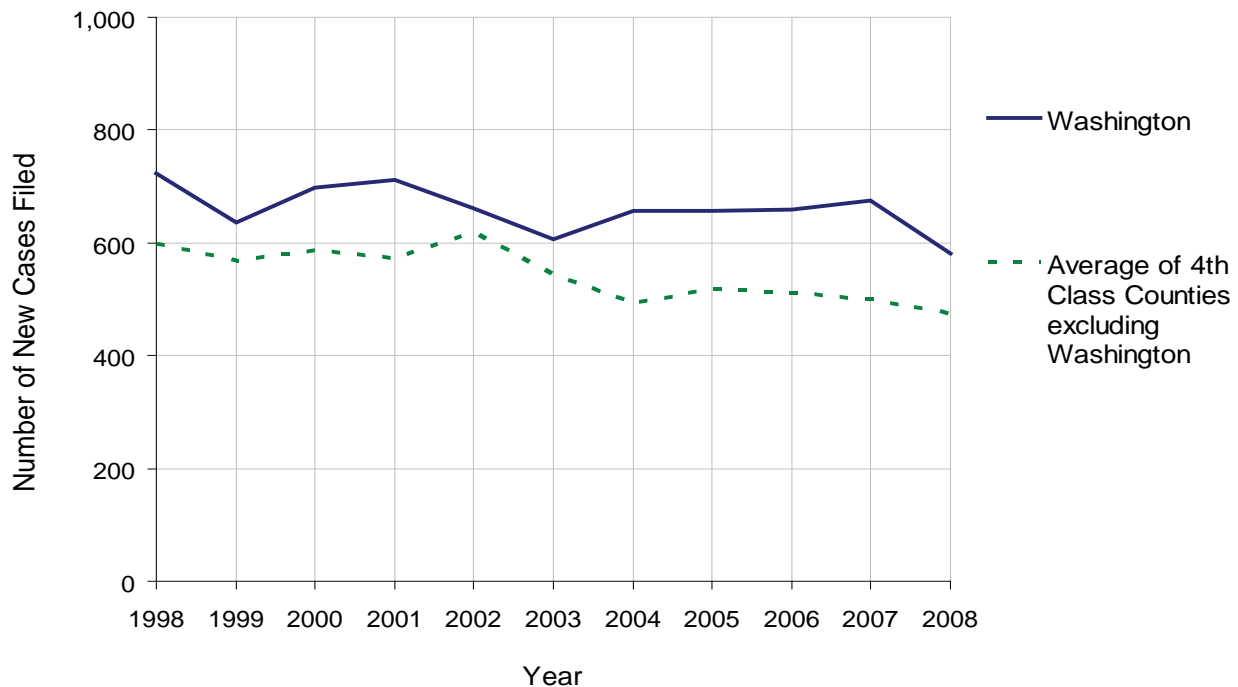
WASHINGTON COUNTY

2008 Population Estimate: 206,407
 Class of County: 4th
 No. of Common Pleas Court Judgeships: 6



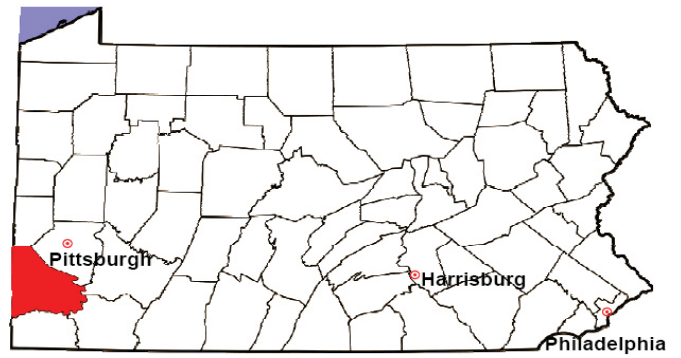
2008 Divorce	No. of Petitions	%
Cases Pending 1/1/08	1,057	
New Cases Filed in '08	582	
Cases Available for Processing	1,639	
Processed By:		
Contested Before a Judge	14	2.4%
Contested Before a Master	93	16.2%
Uncontested	419	72.9%
Other	49	8.5%
Cases Processed	575	100.0%
Cases Pending 12/31/08	1,064	

Divorce New Cases Filed, 1998-2008



WASHINGTON COUNTY

2008 Population Estimate: 206,407
 Class of County: 4th
 No. of Common Pleas Court Judgeships: 6



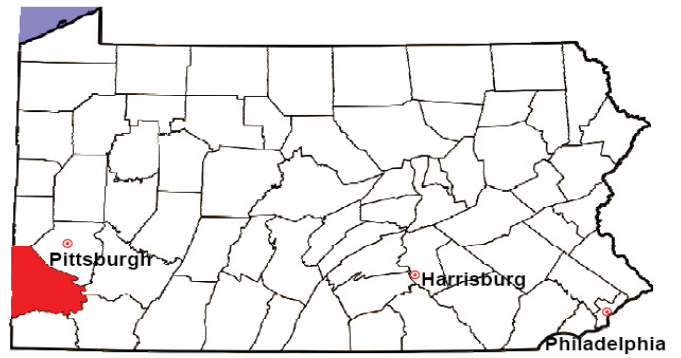
2008 Juvenile Dependency Abuse/Neglect	No. of Petitions	%
Cases Pending 1/1/08	41	
New Cases Filed in '08	182	
Cases Available for Processing	223	
Processed By:		
Judge	30	25.0%
Non-Judicial Officer	90	75.0%
Other	0	0.0%
Cases Processed	120	100.0%
Cases Pending 12/31/08	103	

Abuse/Neglect New Cases Filed, 2000-2008



WASHINGTON COUNTY

2008 Population Estimate: 206,407
 Class of County: 4th
 No. of Common Pleas Court Judgeships: 6



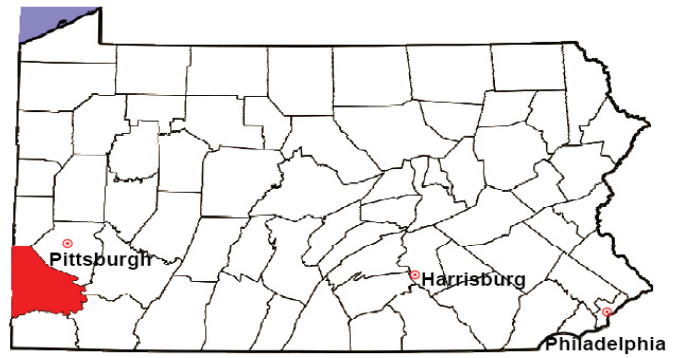
2008 Juvenile Dependency Status Offenses	No. of Petitions	%
Cases Pending 1/1/08	16	
New Cases Filed in '08	81	
Cases Available for Processing	97	
Processed By:		
Judge	15	23.4%
Non-Judicial Officer	49	76.6%
Other	0	0.0%
Cases Processed	64	100.0%
Cases Pending 12/31/08	33	

Status Offenses New Cases Filed, 2000-2008



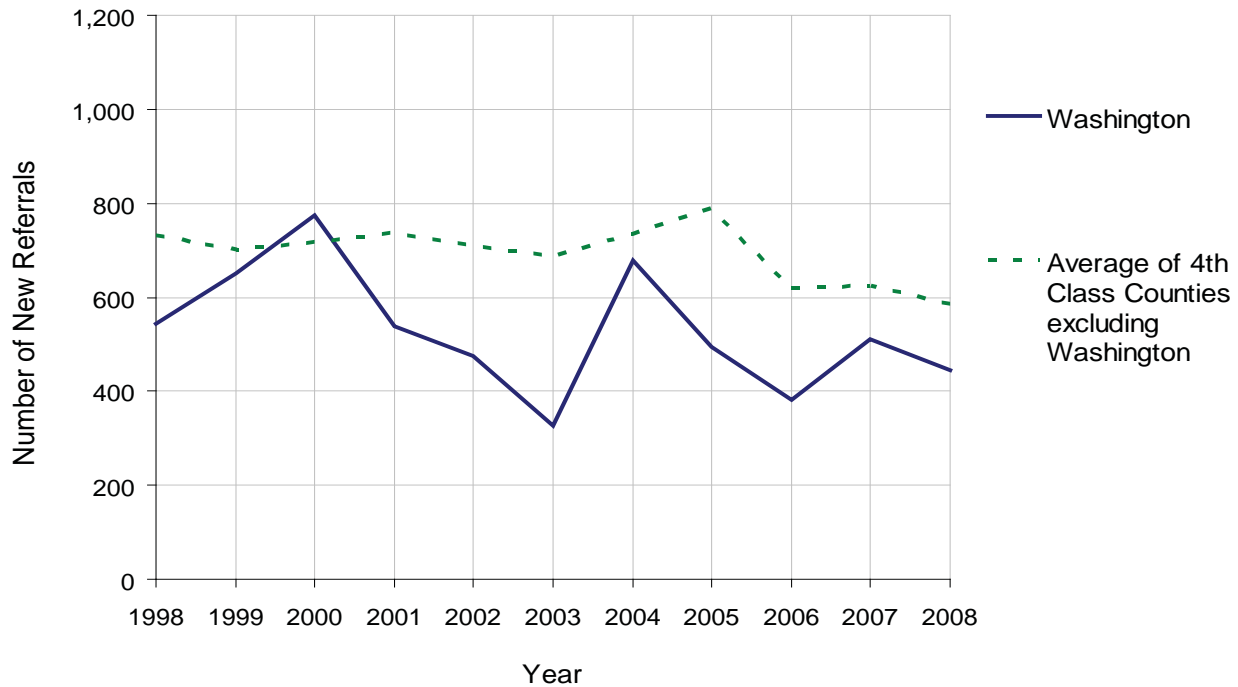
WASHINGTON COUNTY

2008 Population Estimate: 206,407
 Class of County: 4th
 No. of Common Pleas Court Judgeships: 6



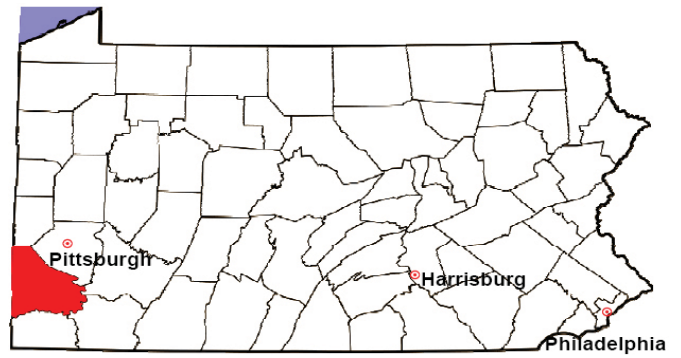
2008 Juvenile Delinquency	No. of Referrals	%
Cases Pending 1/1/08	58	
New Referrals in '08	444	
Cases Available for Processing	502	
Processed By:		
Judge	165	37.2%
Non-Judicial Officer	180	40.6%
Other	98	22.1%
Cases Processed	443	100.0%
Cases Pending 12/31/08	59	

Juvenile Delinquency New Referrals, 1998-2008



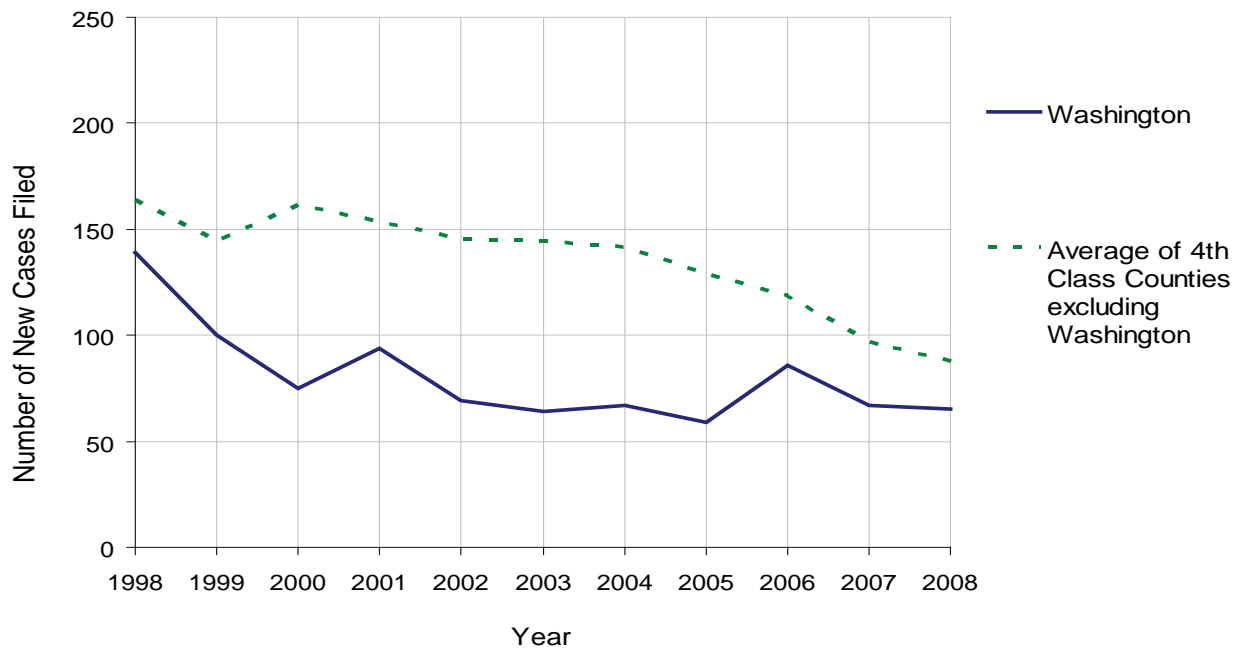
WASHINGTON COUNTY

2008 Population Estimate: 206,407
 Class of County: 4th
 No. of Common Pleas Court Judgeships: 6



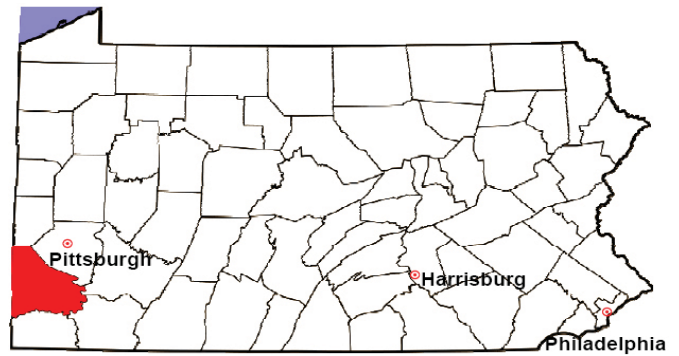
2008 Accounts	No. of Accounts	%
Cases Pending 1/1/08	61	
New Cases Filed in '08	65	
Cases Available for Processing	126	
Processed By:		
Contested before a Judge	6	9.2%
Contested before a Non-Judicial Officer	0	0.0%
Uncontested	49	75.4%
Other	10	15.4%
Cases Processed	65	100.0%
Cases Pending 12/31/08	61	

Accounts New Cases Filed, 1998-2008



WASHINGTON COUNTY

2008 Population Estimate: 206,407
 Class of County: 4th
 No. of Common Pleas Court Judgeships: 6

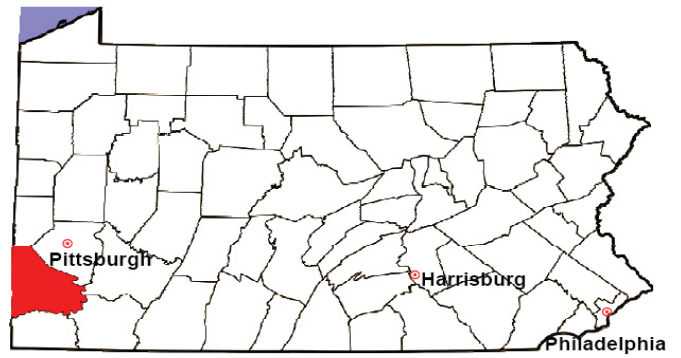


2008 Adoptions		No. of Cases	%
Cases Pending 1/1/08		9	
New Cases Filed in '08		77	
Cases Available for Processing		86	
Processed By:			
Contested before a Judge	Granted	1	1.2%
	Denied	0	0.0%
Uncontested	Granted	78	96.3%
	Denied	2	2.5%
Other		0	0.0%
Cases Processed		81	100.0%
Cases Pending 12/31/08		5	

Note: Prior to 2008, each petition was counted as one new case, regardless of the number of children listed on the petition. Starting in 2008, each child listed on a petition is counted as a separate case. Therefore, statistics for 2008 should not be compared with those for previous years.

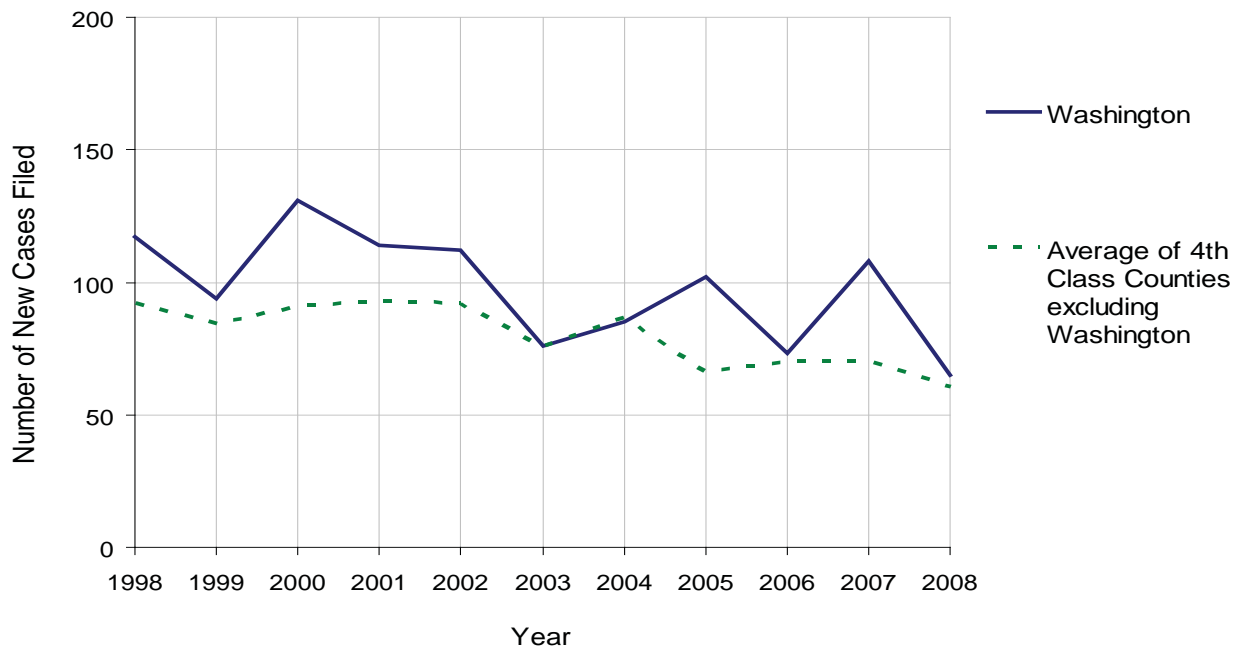
WASHINGTON COUNTY

2008 Population Estimate: 206,407
 Class of County: 4th
 No. of Common Pleas Court Judgeships: 6



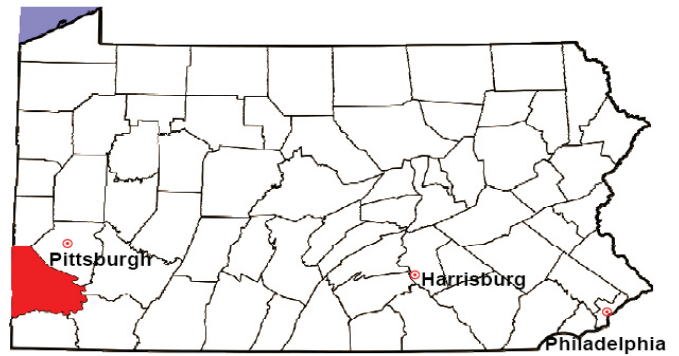
2008 Relinquishments/Terminations	No. of Petitions	%
Cases Pending 1/1/08	24	
New Cases Filed in '08	65	
Cases Available for Processing	89	
Processed By:		
Contested before a Judge	6	9.5%
Uncontested	57	90.5%
Other	0	0.0%
Cases Processed	63	100.0%
Cases Pending 12/31/08	26	

Relinquishments/Terminations New Cases Filed, 1998-2008



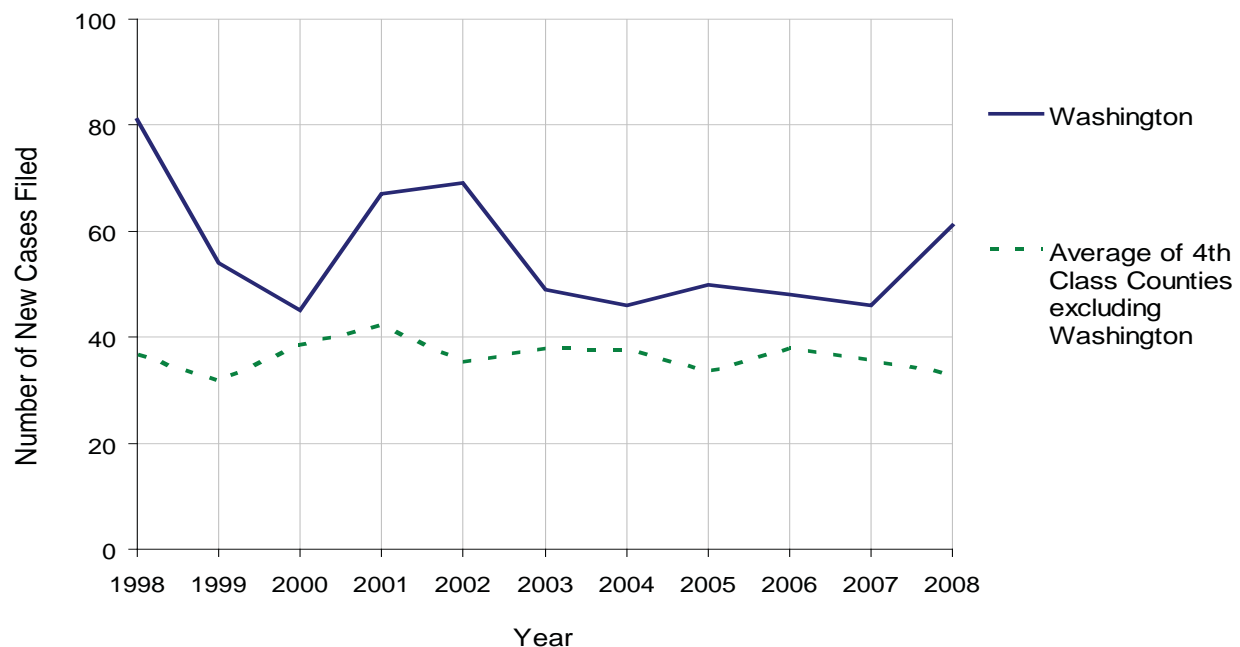
WASHINGTON COUNTY

2008 Population Estimate: 206,407
 Class of County: 4th
 No. of Common Pleas Court Judgeships: 6



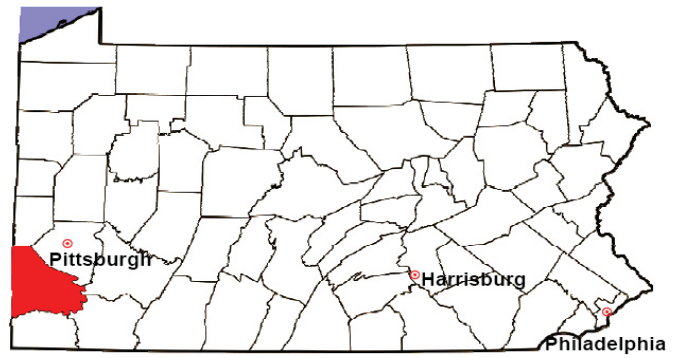
2008 Appointment of Guardians	No. of Petitions	%
Cases Pending 1/1/08	6	
New Cases Filed in '08	61	
Cases Available for Processing	67	
Processed By:		
Contested before a Judge	1	1.8%
Uncontested	46	82.1%
Other	9	16.1%
Cases Processed	56	100.0%
Cases Pending 12/31/08	11	

Appointment of Guardians New Cases Filed, 1998-2008



WASHINGTON COUNTY

2008 Population Estimate: 206,407
 Class of County: 4th
 No. of Common Pleas Court Judgeships: 6



2008 Jury Activity & Performance Measures		
A. Juror Days	1,888	
B. Number Sent to Voir Dire	1,615	
Voir Dire Attendance Rate $(B/A * 100)$		85.5%
C. Number of Voir Dires Started	44	
Juror Days Per Voir Dire Starts (A/C)		43
D. Number of Jurors Selected	597	
Juror Selection Rate $(D/B * 100)$		37.0%
E. Number of Jury Trials Started	35	
Juror Days Per Trial Starts (A/E)		54
Number of Voir Dires Not Resulting in Trial $(C-E)$		9
Percent Voir Dires Not Resulting in Trial $(C-E)/C * 100$		20.5%
F. Pool Days	11	
G. Zero Panel Days	1	
Percent Zero Panel Days $(G/F * 100)$		9.1%
H. Total Juror Fees Incurred	\$61,106	
Average Juror Fees Per Trial (H/E)		\$1,746

Average Juror Fees Per Trial, 1998-2008

