

CARBON COUNTY

2008 Population Estimate: 63,558

Class of County: 6th

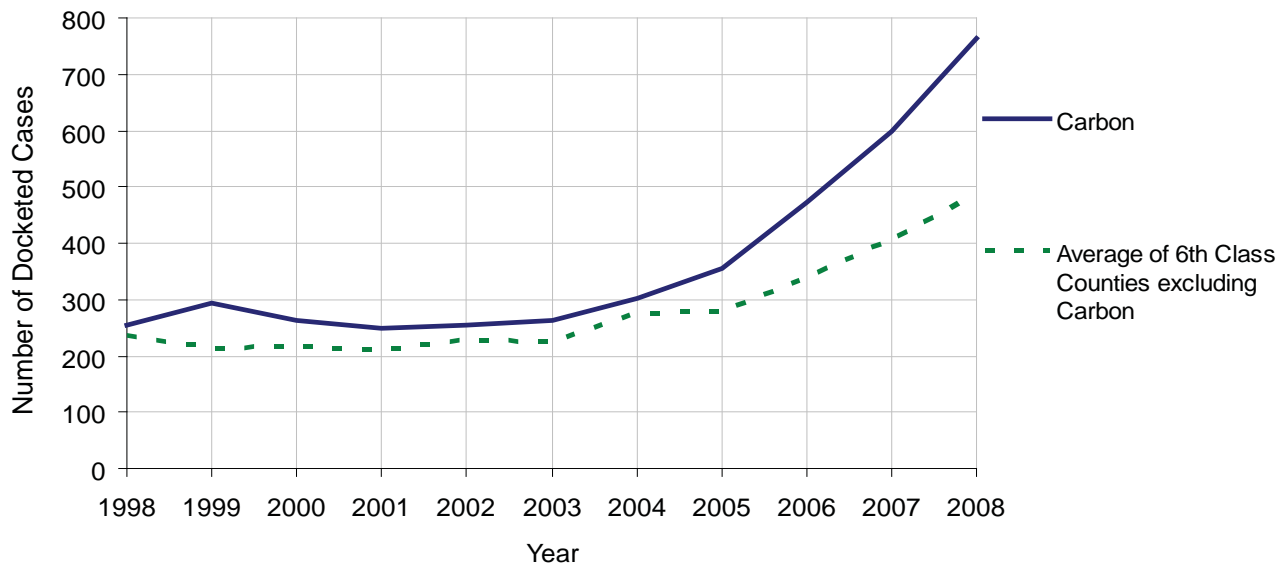
No. of Common Pleas Court Judgeships: 2



2008 Civil		Civil Action		
Docketed Cases		763		
Arbitrated Cases		64		
Trial-Ready Cases:		Civil Action	Other	Total
Cases Pending 1/1/08		73	27	100
Became Trial Ready in '08		84	61	145
Restored to Trial List		1	0	1
Appeals from Arbitration		12	1	13
Cases Available for Trial		170	89	259
Disposed By:				
Settlement		65	36	101
Non-Jury Trial		3	3	6
Jury Trial		2	0	2
Stricken from Trial List		1	4	5
Other		25	19	44
Cases Disposed		96	62	158
Cases Pending 12/31/08		74	27	101

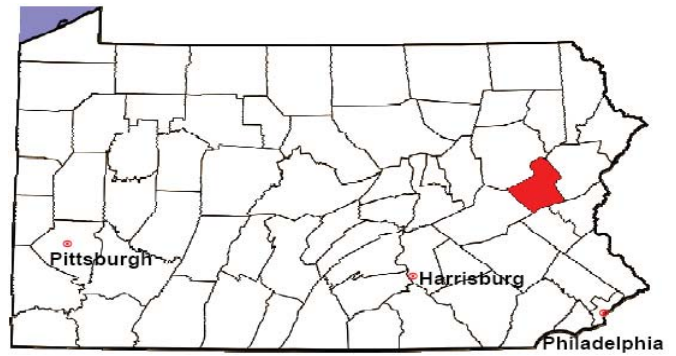
Age of Trial-Ready Cases as of 12/31/08 (Civil Action Only)		
0-6 months	34	46%
7-12 months	16	22%
13-18 months	7	9%
19-24 months	5	7%
25-30 months	3	4%
31-36 months	4	5%
Over 36 months	5	7%
Total	74	100%

Docketed Cases, 1998-2008



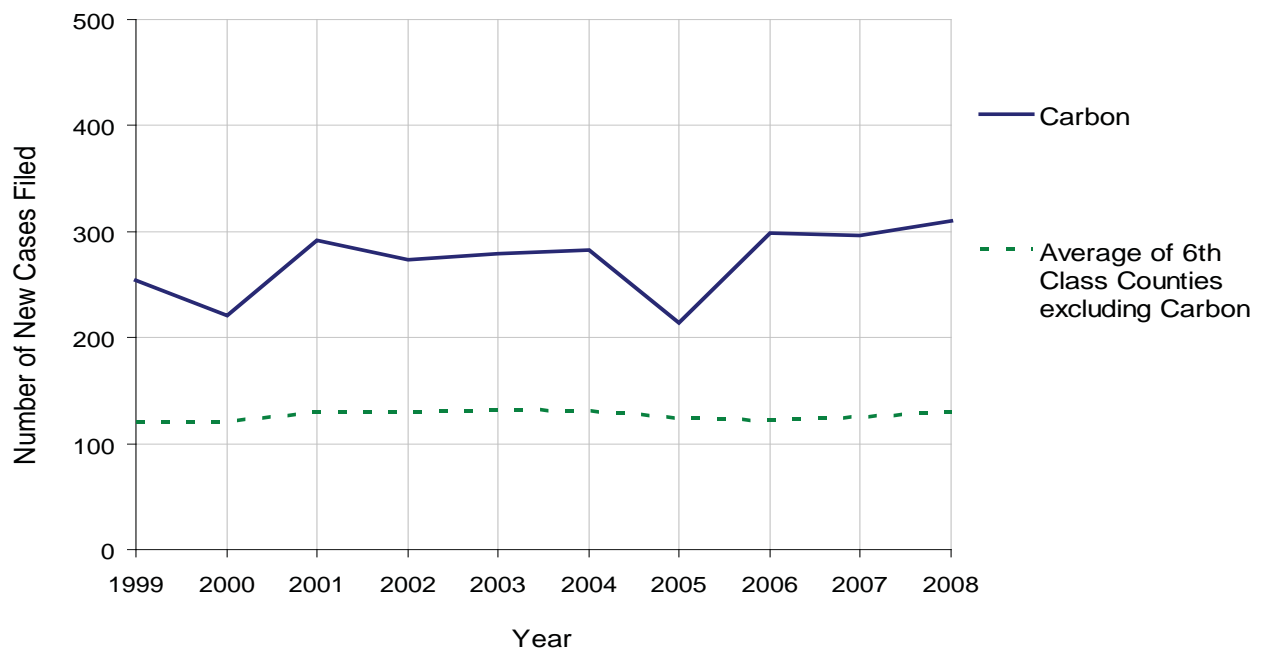
CARBON COUNTY

2008 Population Estimate: 63,558
 Class of County: 6th
 No. of Common Pleas Court Judgeships: 2



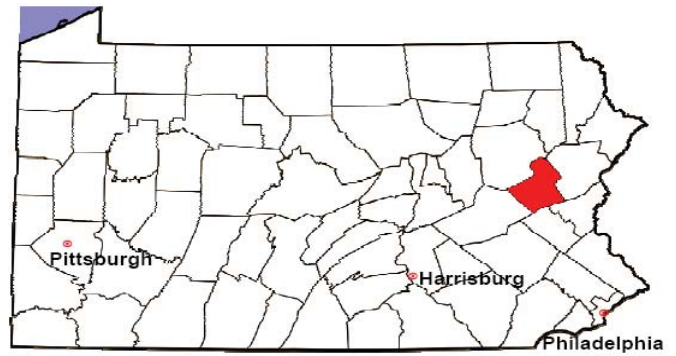
2008 Protection From Abuse	No. of Petitions	%
Cases Pending 1/1/08	14	
New Cases Filed in '08	310	
Cases Available for Processing	324	
Processed By:		
Final Order After Hearing	113	36.1%
Final Order by Stipulation or Agreement	51	16.3%
Dismissal	30	9.6%
Withdrawal	119	38.0%
Other	0	0.0%
Cases Processed	313	100.0%
Cases Pending 12/31/08	11	

PFA New Cases Filed, 1999-2008



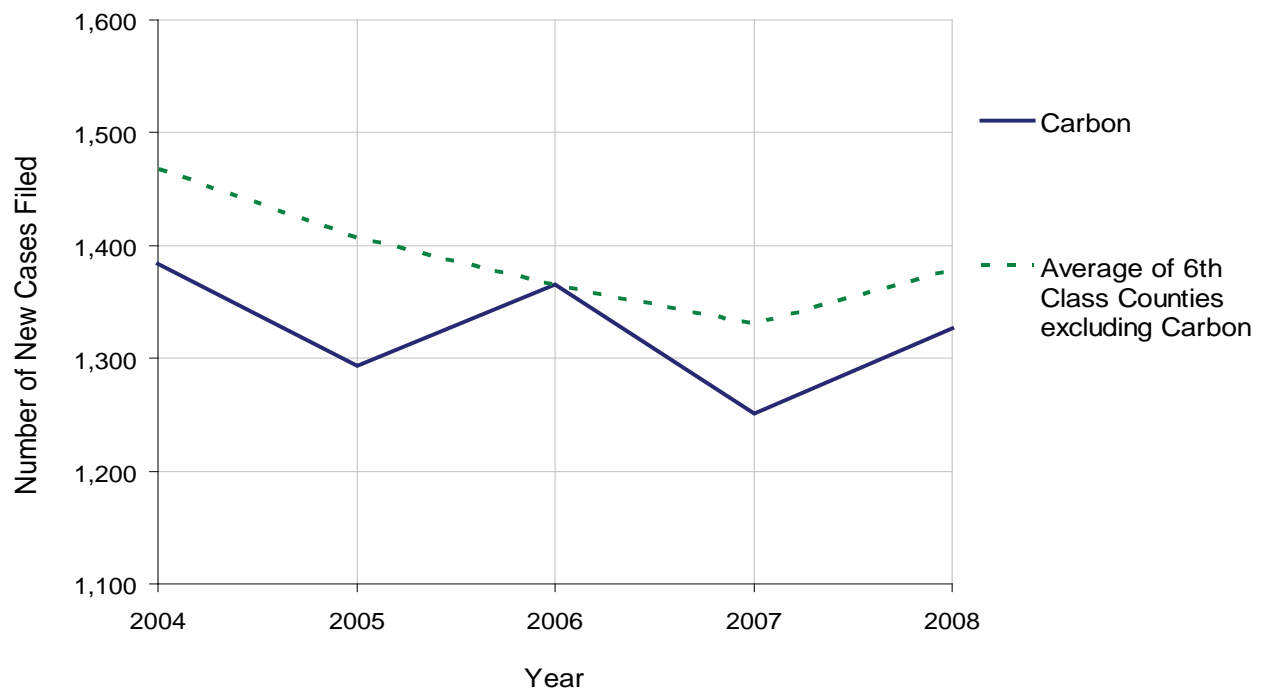
CARBON COUNTY

2008 Population Estimate: 63,558
 Class of County: 6th
 No. of Common Pleas Court Judgeships: 2



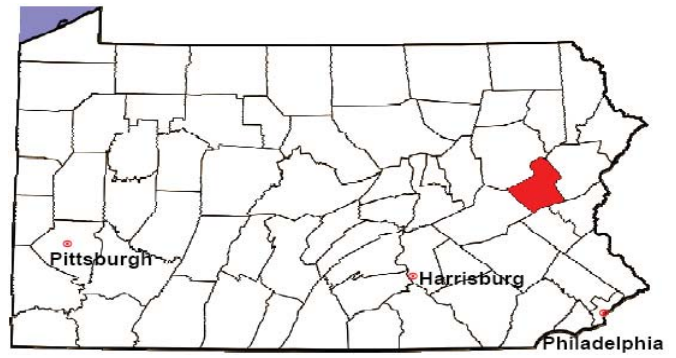
2008 Spousal & Child Support	No. of Petitions	%
Cases Pending 1/1/08	237	
New Cases Filed in '08	1,327	
Dockets Transferred In (+)	18	
Dockets Transferred Out (-)	20	
Cases Available for Processing	1,562	
Processed By:		
Judge	16	1.2%
Intake Officer	1,190	89.4%
Hearing Officer	125	9.4%
Other	0	0.0%
Cases Processed	1,331	100.0%
Cases Pending 12/31/08	231	

Spousal & Child Support New Cases Filed, 1998-2008



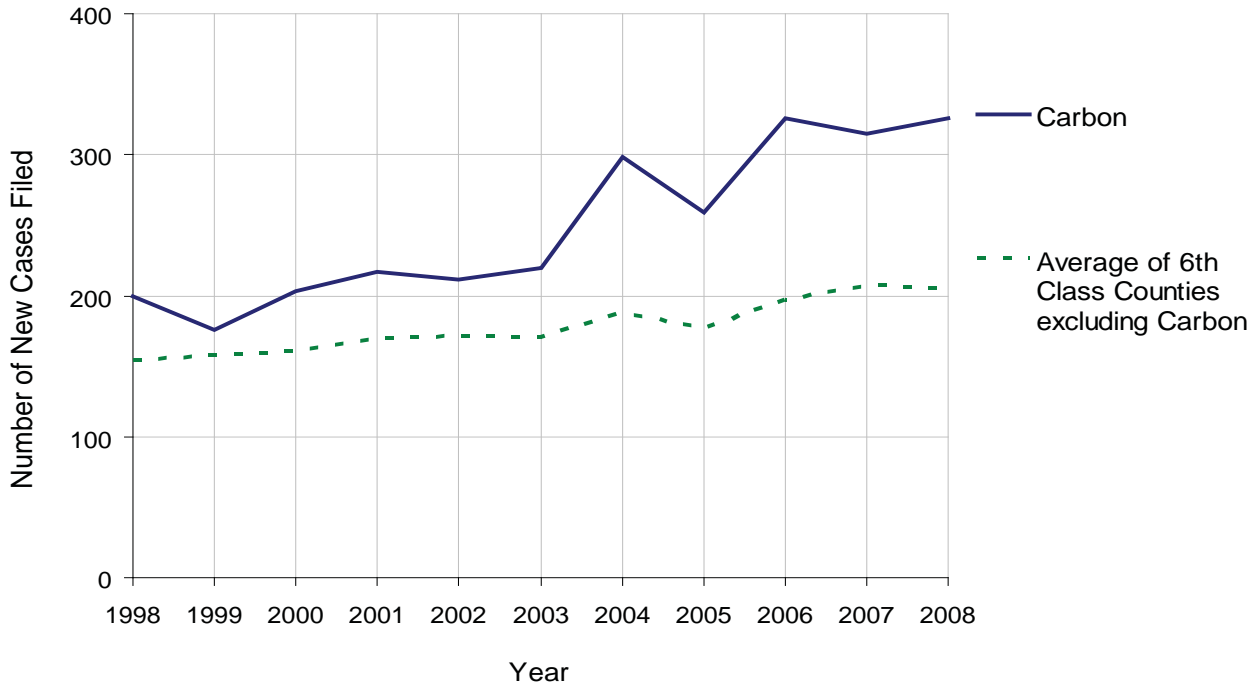
CARBON COUNTY

2008 Population Estimate: 63,558
 Class of County: 6th
 No. of Common Pleas Court Judgeships: 2



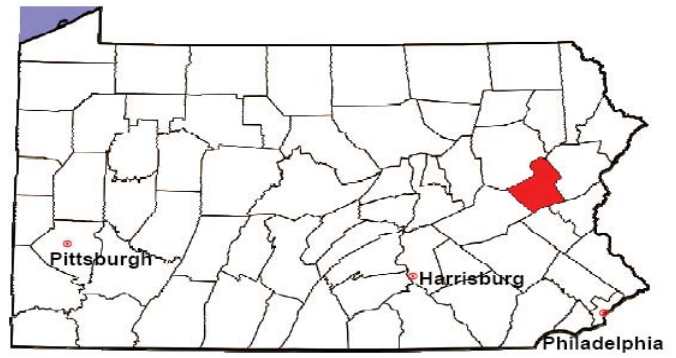
2008 Custody/Partial Custody/Visitation	No. of Petitions	%
Cases Pending 1/1/08	93	
New Cases Filed in '08	326	
Cases Available for Processing	419	
Processed By:		
Judge	169	51.7%
Non-Judicial Officer	138	42.2%
Other	20	6.1%
Cases Processed	327	100.0%
Cases Pending 12/31/08	92	

Custody/Partial Custody/Visitation New Cases Filed
 1998-2008



CARBON COUNTY

2008 Population Estimate: 63,558
 Class of County: 6th
 No. of Common Pleas Court Judgeships: 2



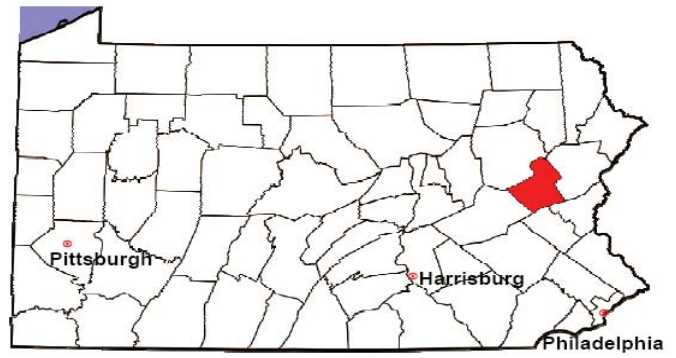
2008 Divorce	No. of Petitions	%
Cases Pending 1/1/08	236	
New Cases Filed in '08	201	
Cases Available for Processing	437	
Processed By:		
Contested Before a Judge	1	0.4%
Contested Before a Master	23	9.7%
Uncontested	180	75.9%
Other	33	13.9%
Cases Processed	237	100.0%
Cases Pending 12/31/08	200	

Divorce New Cases Filed, 1998-2008



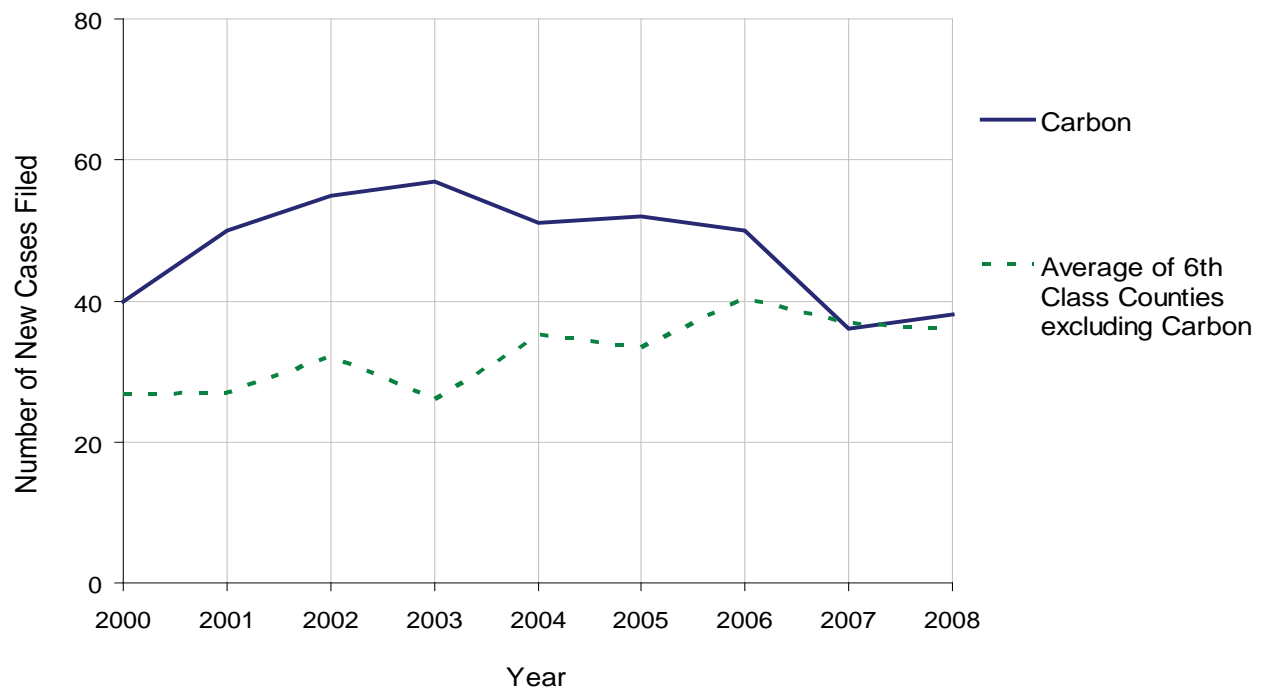
CARBON COUNTY

2008 Population Estimate: 63,558
 Class of County: 6th
 No. of Common Pleas Court Judgeships: 2



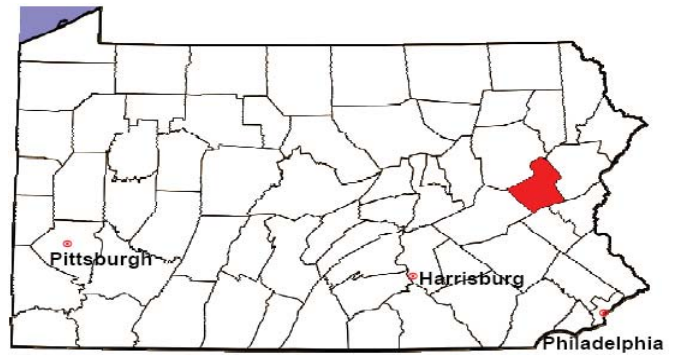
2008 Juvenile Dependency Abuse/Neglect	No. of Petitions	%
Cases Pending 1/1/08	0	
New Cases Filed in '08	38	
Cases Available for Processing	38	
Processed By:		
Judge	27	73.0%
Non-Judicial Officer	0	0.0%
Other	10	27.0%
Cases Processed	37	100.0%
Cases Pending 12/31/08	1	

Abuse/Neglect New Cases Filed, 2000-2008



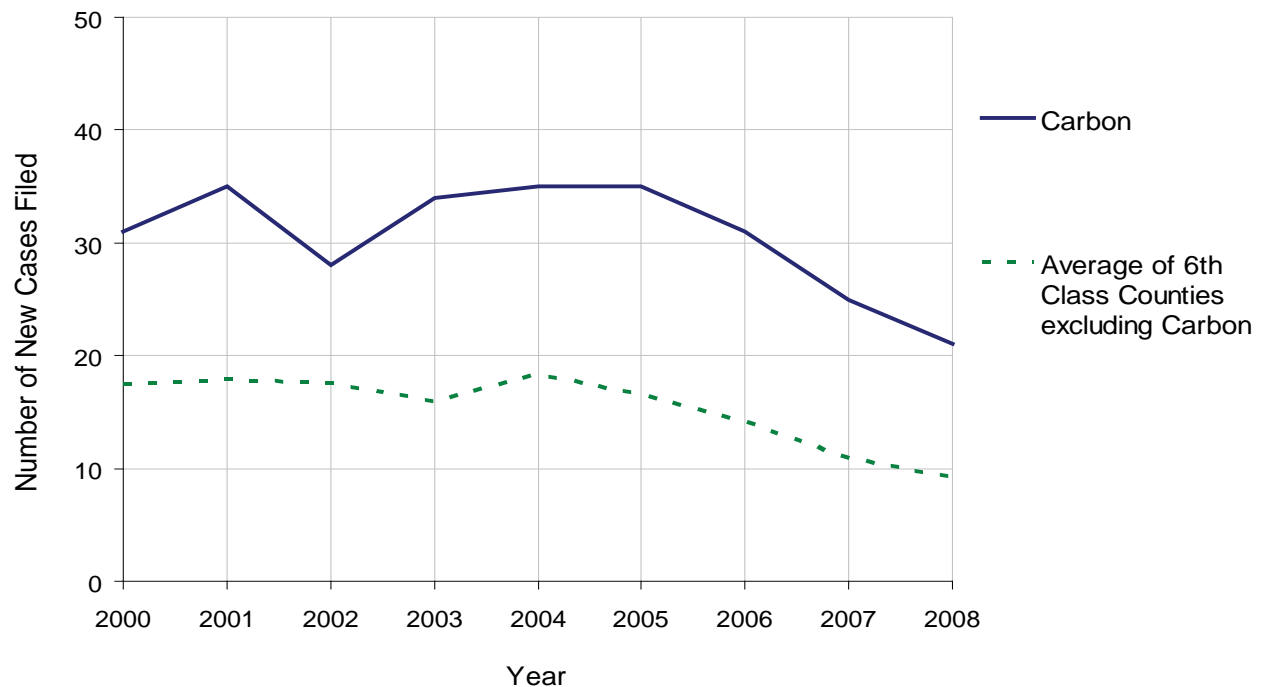
CARBON COUNTY

2008 Population Estimate: 63,558
 Class of County: 6th
 No. of Common Pleas Court Judgeships: 2



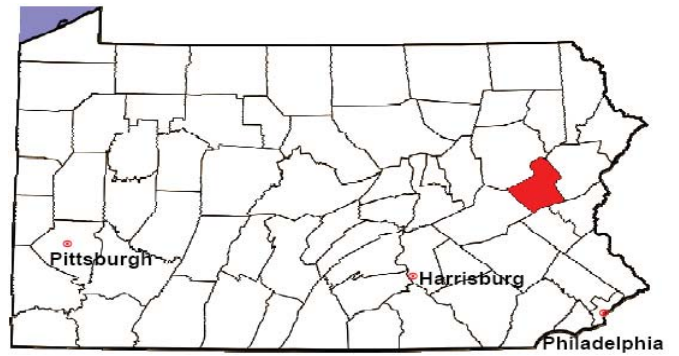
2008 Juvenile Dependency Status Offenses	No. of Petitions	%
Cases Pending 1/1/08	0	
New Cases Filed in '08	21	
Cases Available for Processing	21	
Processed By:		
Judge	13	68.4%
Non-Judicial Officer	0	0.0%
Other	6	31.6%
Cases Processed	19	100.0%
Cases Pending 12/31/08	2	

Status Offenses New Cases Filed, 2000-2008



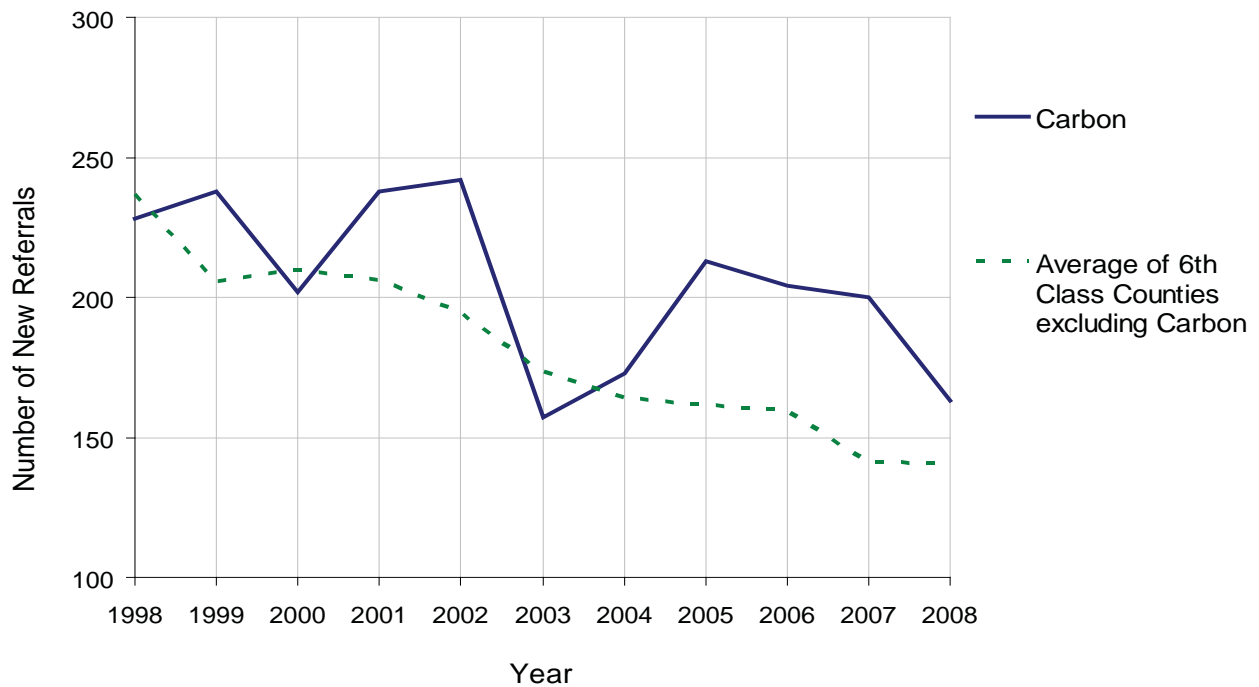
CARBON COUNTY

2008 Population Estimate: 63,558
 Class of County: 6th
 No. of Common Pleas Court Judgeships: 2



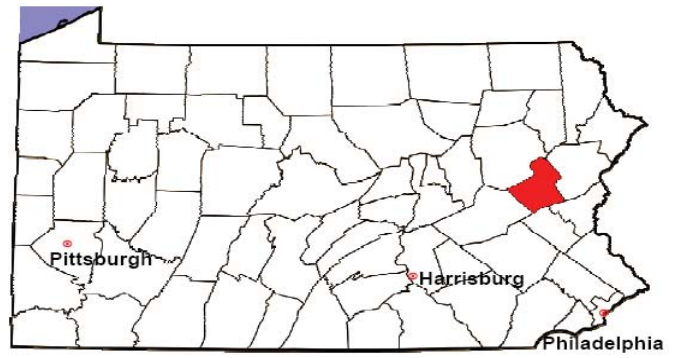
2008 Juvenile Delinquency	No. of Referrals	%
Cases Pending 1/1/08	70	
New Referrals in '08	163	
Cases Available for Processing	233	
Processed By:		
Judge	47	26.7%
Non-Judicial Officer	80	45.5%
Other	49	27.8%
Cases Processed	176	100.0%
Cases Pending 12/31/08	57	

Juvenile Delinquency New Referrals, 1998-2008



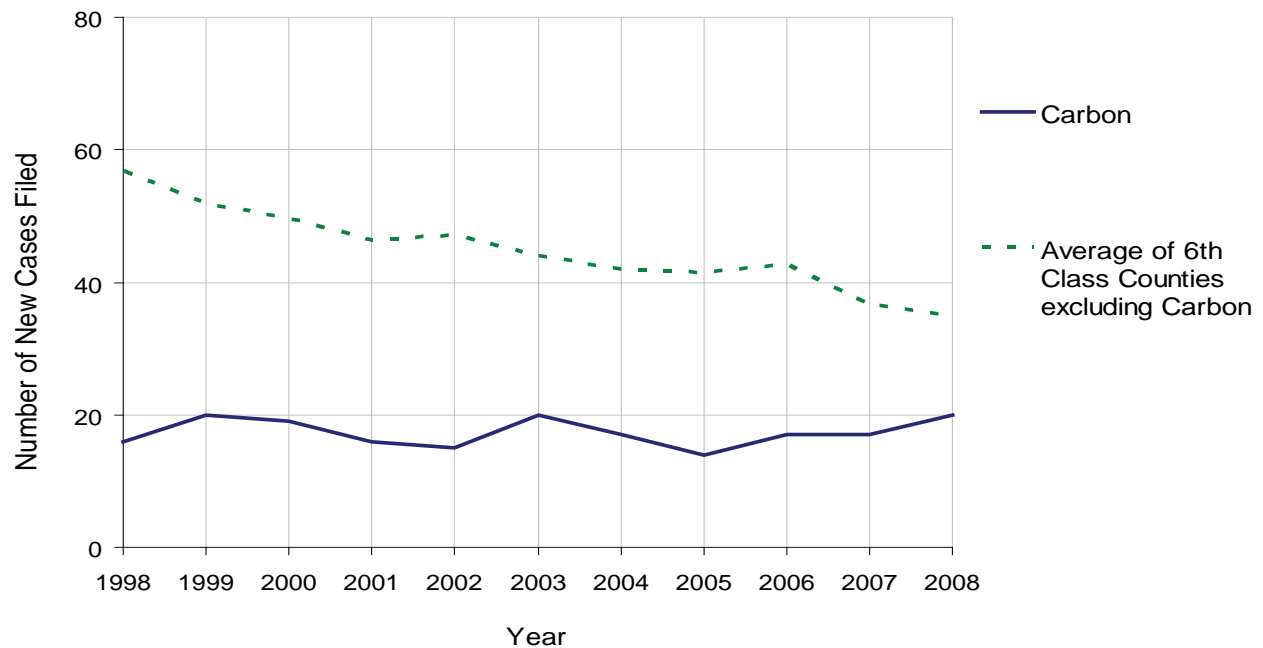
CARBON COUNTY

2008 Population Estimate: 63,558
 Class of County: 6th
 No. of Common Pleas Court Judgeships: 2



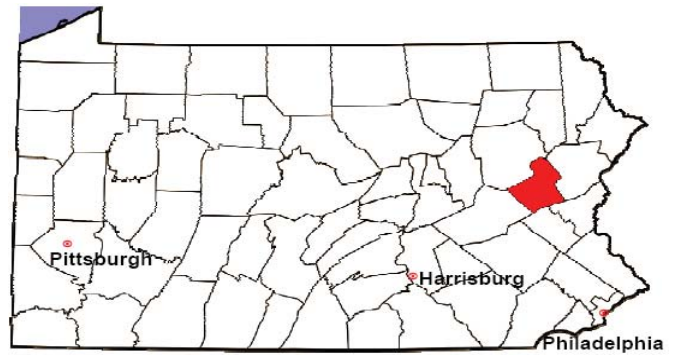
2008 Accounts	No. of Accounts	%
Cases Pending 1/1/08	7	
New Cases Filed in '08	20	
Cases Available for Processing	27	
Processed By:		
Contested before a Judge	0	0.0%
Contested before a Non-Judicial Officer	0	0.0%
Uncontested	18	100.0%
Other	0	0.0%
Cases Processed	18	100.0%
Cases Pending 12/31/08	9	

Accounts New Cases Filed, 1998-2008



CARBON COUNTY

2008 Population Estimate: 63,558
 Class of County: 6th
 No. of Common Pleas Court Judgeships: 2

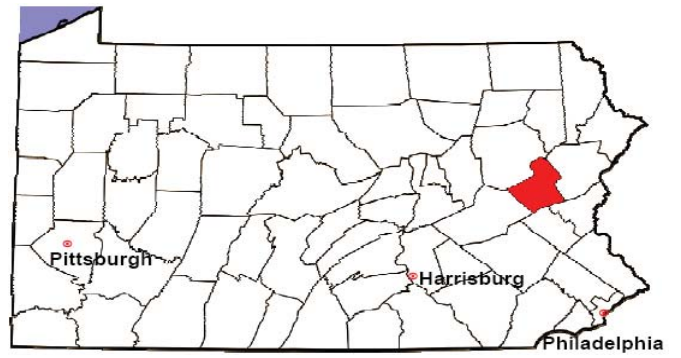


2008 Adoptions		No. of Cases	%
Cases Pending 1/1/08		4	
New Cases Filed in '08		20	
Cases Available for Processing		24	
Processed By:			
Contested before a Judge	Granted	2	10.5%
	Denied	1	5.3%
Uncontested	Granted	14	73.7%
	Denied	0	0.0%
Other		2	10.5%
Cases Processed		19	100.0%
Cases Pending 12/31/08		5	

Note: Prior to 2008, each petition was counted as one new case, regardless of the number of children listed on the petition. Starting in 2008, each child listed on a petition is counted as a separate case. Therefore, statistics for 2008 should not be compared with those for previous years.

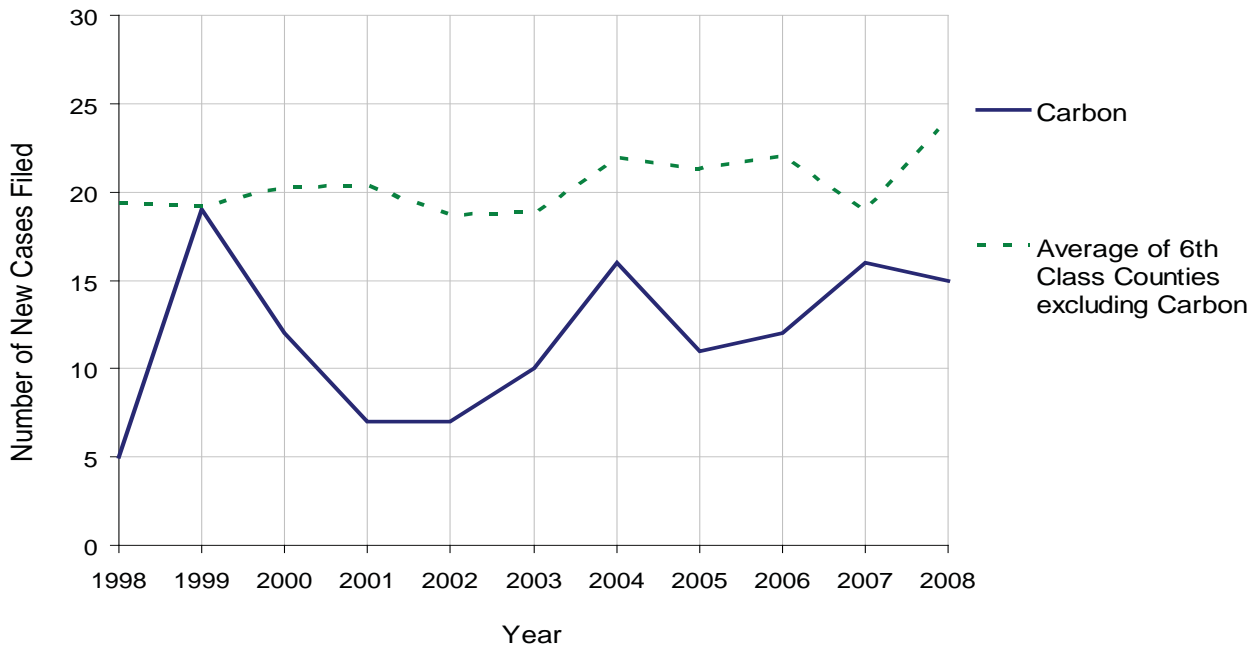
CARBON COUNTY

2008 Population Estimate: 63,558
 Class of County: 6th
 No. of Common Pleas Court Judgeships: 2



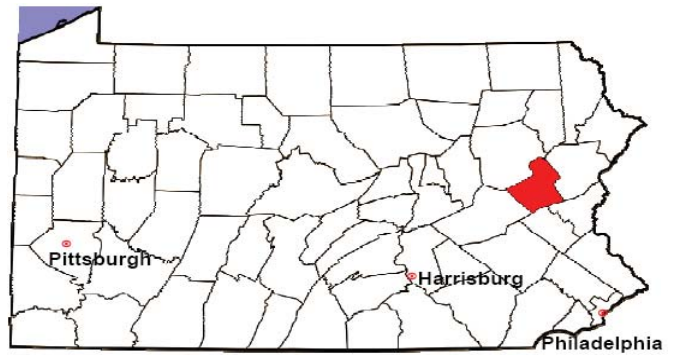
2008 Relinquishments/Terminations	No. of Petitions	%
Cases Pending 1/1/08	11	
New Cases Filed in '08	15	
Cases Available for Processing	26	
Processed By:		
Contested before a Judge	0	0.0%
Uncontested	19	95.0%
Other	1	5.0%
Cases Processed	20	100.0%
Cases Pending 12/31/08	6	

Relinquishments/Terminations New Cases Filed, 1998-2008



CARBON COUNTY

2008 Population Estimate: 63,558
 Class of County: 6th
 No. of Common Pleas Court Judgeships: 2



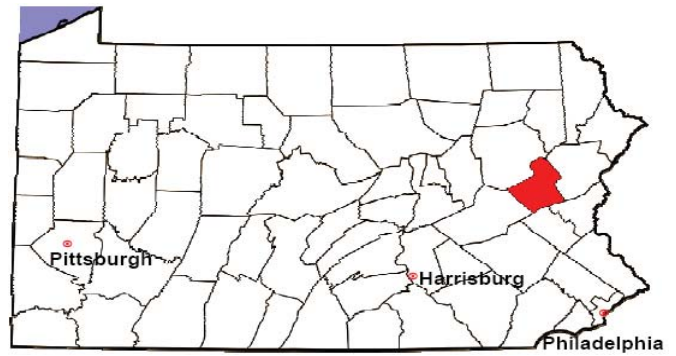
2008 Appointment of Guardians	No. of Petitions	%
Cases Pending 1/1/08	3	
New Cases Filed in '08	4	
Cases Available for Processing	7	
Processed By:		
Contested before a Judge	0	0.0%
Uncontested	6	100.0%
Other	0	0.0%
Cases Processed	6	100.0%
Cases Pending 12/31/08	1	

Appointment of Guardians New Cases Filed, 1998-2008



CARBON COUNTY

2008 Population Estimate: 63,558
 Class of County: 6th
 No. of Common Pleas Court Judgeships: 2



2008 Jury Activity & Performance Measures		
A. Juror Days		873
B. Number Sent to Voir Dire		639
	Voir Dire Attendance Rate $(B/A * 100)$	73.2%
C. Number of Voir Dires Started		12
	Juror Days Per Voir Dire Starts (A/C)	73
D. Number of Jurors Selected		154
	Juror Selection Rate $(D/B * 100)$	24.1%
E. Number of Jury Trials Started		9
	Juror Days Per Trial Starts (A/E)	97
	Number of Voir Dires Not Resulting in Trial $(C-E)$	3
	Percent Voir Dires Not Resulting in Trial $(C-E)/C * 100$	25.0%
F. Pool Days		11
G. Zero Panel Days		3
	Percent Zero Panel Days $(G/F * 100)$	27.3%
H. Total Juror Fees Incurred		\$13,372
	Average Juror Fees Per Trial (H/E)	\$1,486

Average Juror Fees Per Trial, 1998-2008

