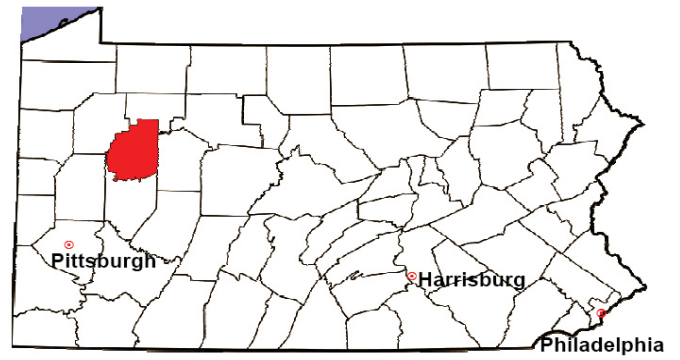


CLARION COUNTY

2008 Population Estimate: 39,989

Class of County: 6th

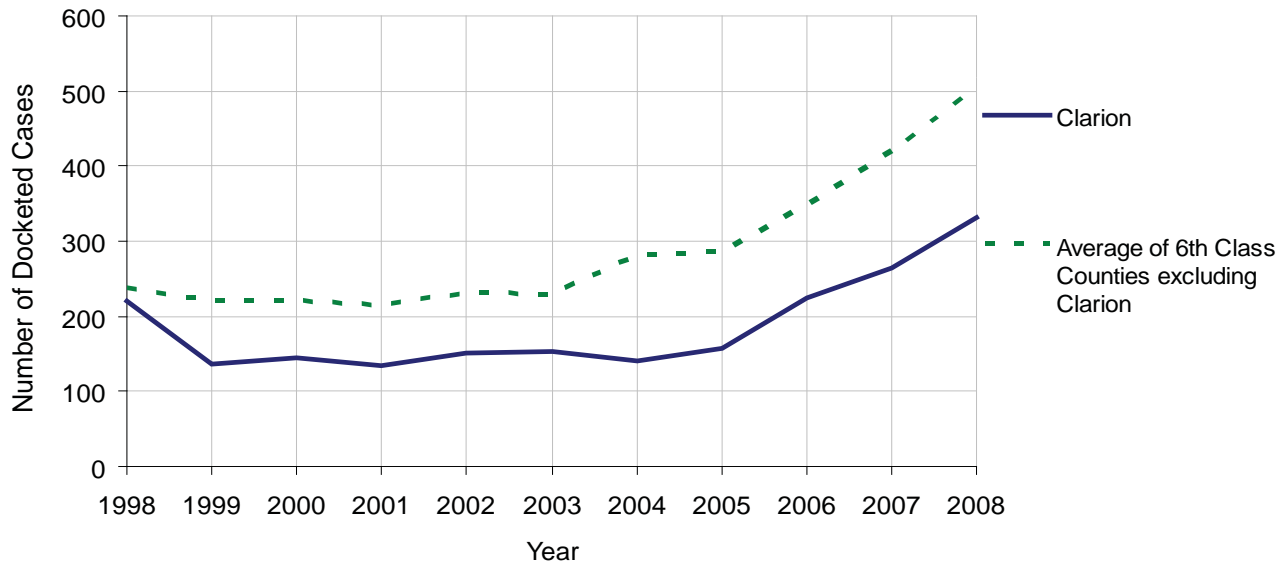
No. of Common Pleas Court Judgeships: 1



2008 Civil		Civil Action		
Docketed Cases		332		
Arbitrated Cases		7		
Trial-Ready Cases:		Civil Action	Other	Total
Cases Pending 1/1/08		8	0	8
Became Trial Ready in '08		13	0	13
Restored to Trial List		0	0	0
Appeals from Arbitration		1	0	1
Cases Available for Trial		22	0	22
Disposed By:				
Settlement		13	0	13
Non-Jury Trial		3	0	3
Jury Trial		1	0	1
Stricken from Trial List		2	0	2
Other		0	0	0
Cases Disposed		19	0	19
Cases Pending 12/31/08		3	0	3

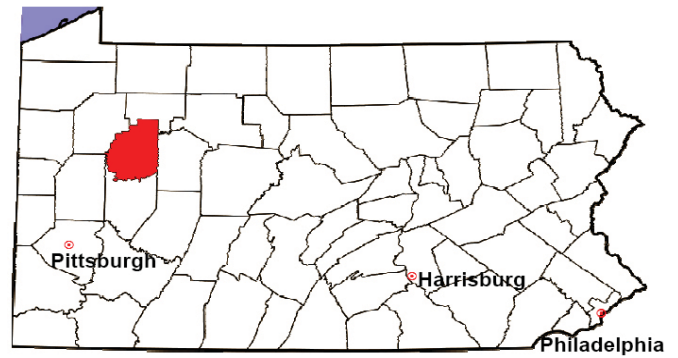
Age of Trial-Ready Cases as of 12/31/08 (Civil Action Only)		
0-6 months	2	67%
7-12 months	1	33%
13-18 months	0	0%
19-24 months	0	0%
25-30 months	0	0%
31-36 months	0	0%
Over 36 months	0	0%
Total	3	100%

Docketed Cases, 1998-2008



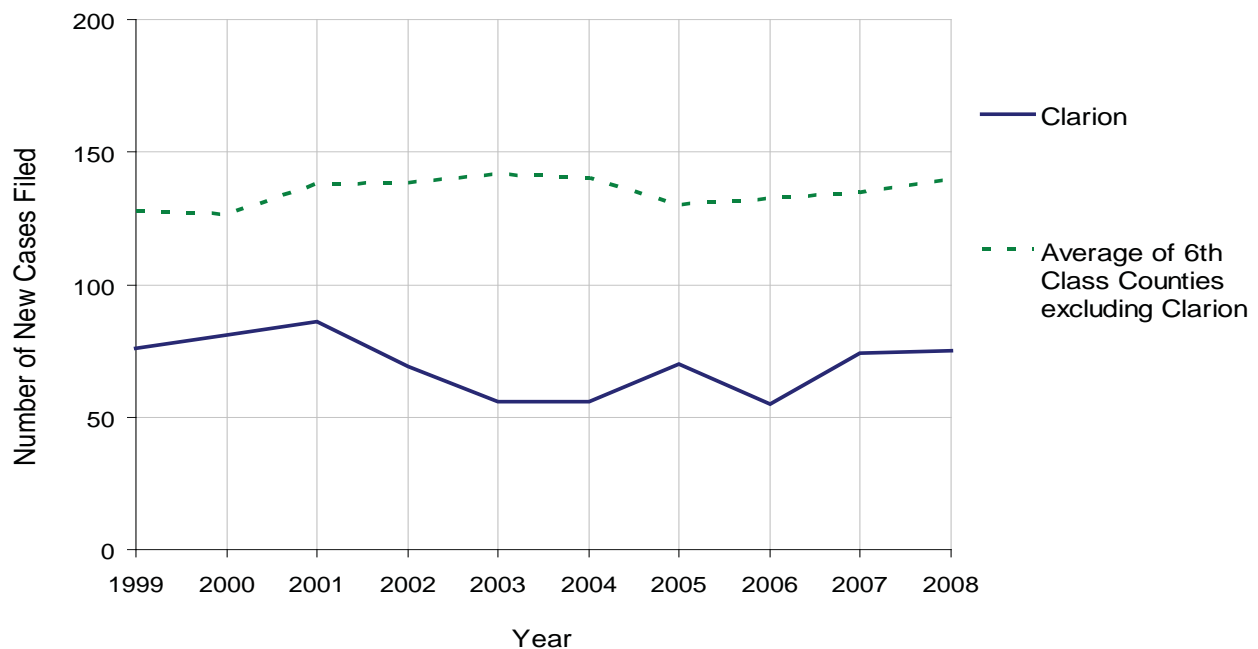
CLARION COUNTY

2008 Population Estimate: 39,989
 Class of County: 6th
 No. of Common Pleas Court Judgeships: 1



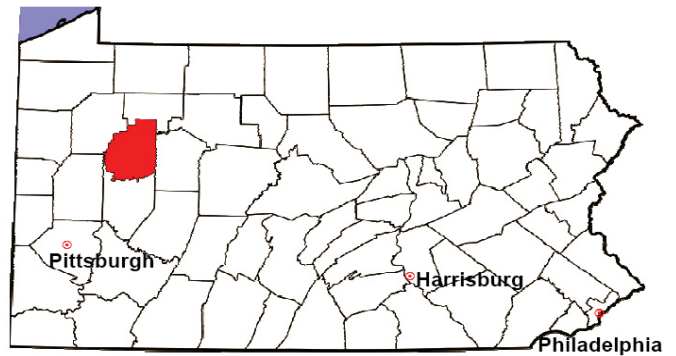
2008 Protection From Abuse	No. of Petitions	%
Cases Pending 1/1/08	6	
New Cases Filed in '08	75	
Cases Available for Processing	81	
Processed By:		
Final Order After Hearing	8	10.0%
Final Order by Stipulation or Agreement	49	61.3%
Dismissal	14	17.5%
Withdrawal	9	11.3%
Other	0	0.0%
Cases Processed	80	100.0%
Cases Pending 12/31/08	1	

PFA New Cases Filed, 1999-2008



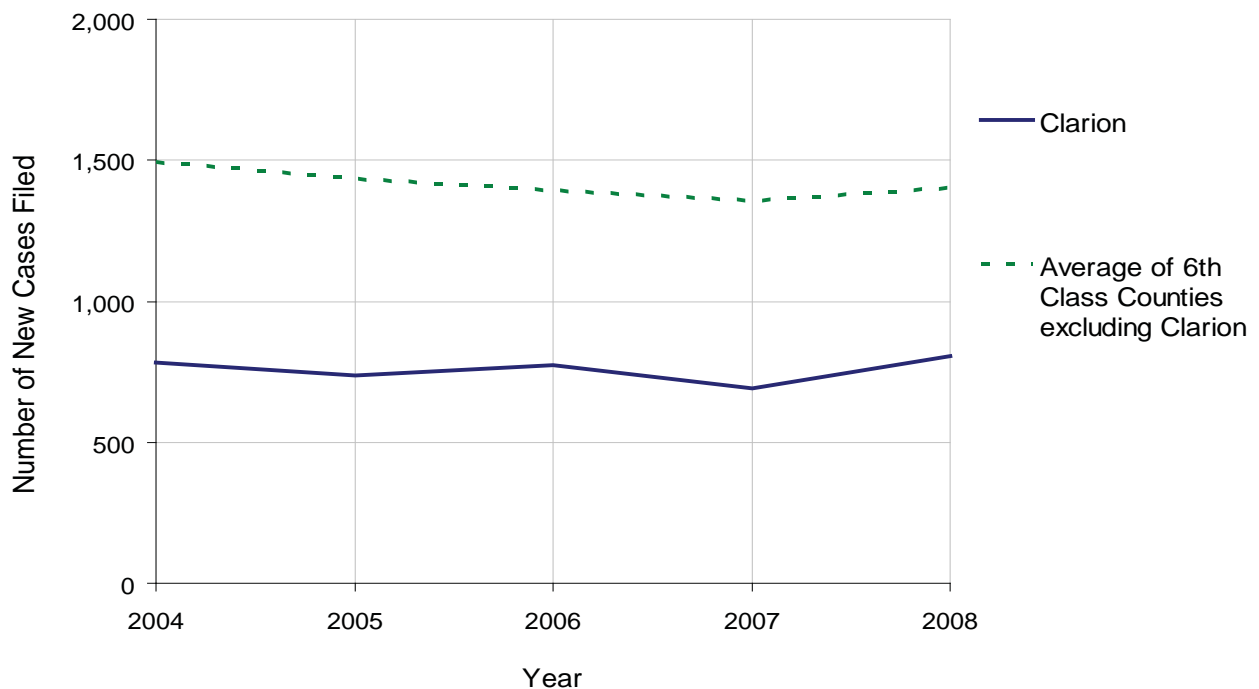
CLARION COUNTY

2008 Population Estimate: 39,989
 Class of County: 6th
 No. of Common Pleas Court Judgeships: 1



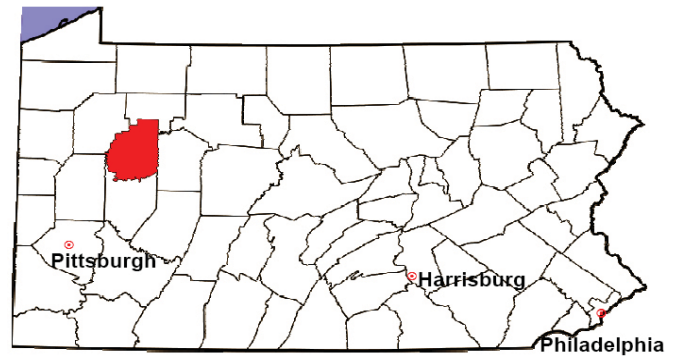
2008 Spousal & Child Support	No. of Petitions	%
Cases Pending 1/1/08	61	
New Cases Filed in '08	804	
Dockets Transferred In (+)	27	
Dockets Transferred Out (-)	5	
Cases Available for Processing	887	
Processed By:		
Judge	3	0.4%
Intake Officer	792	95.2%
Hearing Officer	37	4.4%
Other	0	0.0%
Cases Processed	832	100.0%
Cases Pending 12/31/08	55	

Spousal & Child Support New Cases Filed, 1998-2008



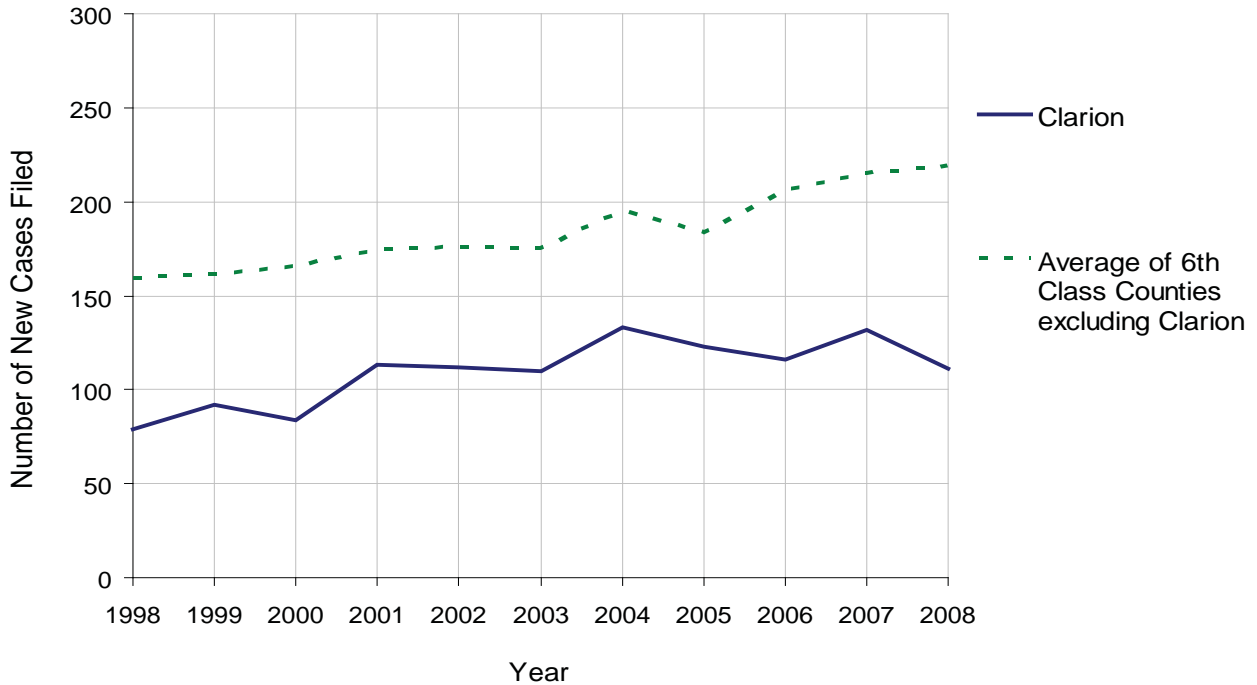
CLARION COUNTY

2008 Population Estimate: 39,989
 Class of County: 6th
 No. of Common Pleas Court Judgeships: 1



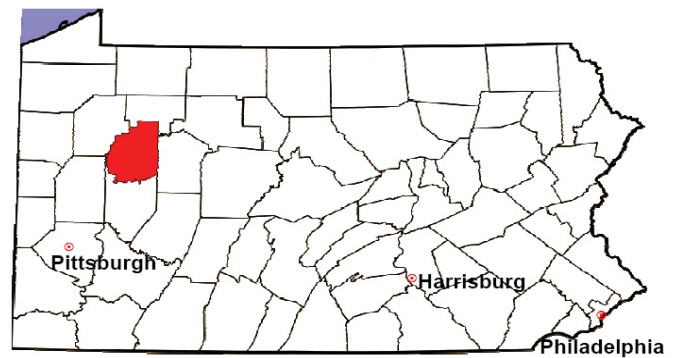
2008 Custody/Partial Custody/Visitation	No. of Petitions	%
Cases Pending 1/1/08	21	
New Cases Filed in '08	111	
Cases Available for Processing	132	
Processed By:		
Judge	19	17.3%
Non-Judicial Officer	25	22.7%
Other	66	60.0%
Cases Processed	110	100.0%
Cases Pending 12/31/08	22	

Custody/Partial Custody/Visitation New Cases Filed
 1998-2008



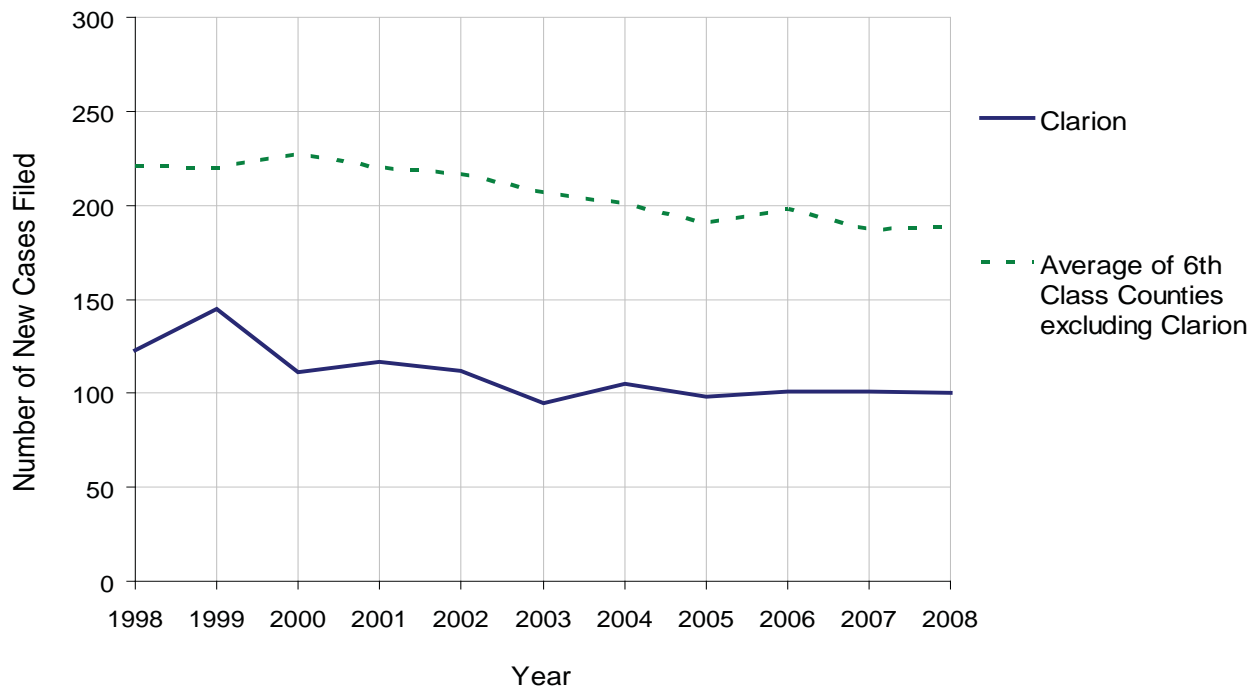
CLARION COUNTY

2008 Population Estimate: 39,989
 Class of County: 6th
 No. of Common Pleas Court Judgeships: 1



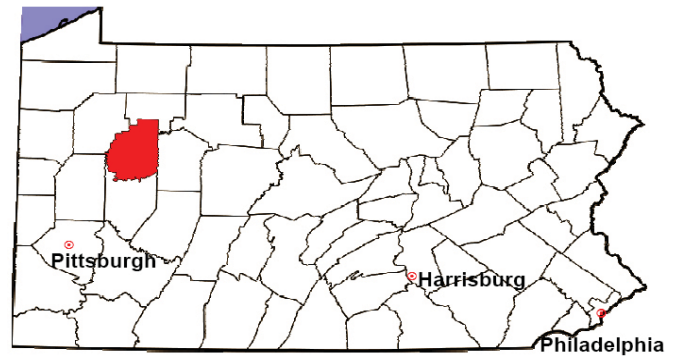
2008 Divorce	No. of Petitions	%
Cases Pending 1/1/08	21	
New Cases Filed in '08	100	
Cases Available for Processing	121	
Processed By:		
Contested Before a Judge	10	10.6%
Contested Before a Master	5	5.3%
Uncontested	78	83.0%
Other	1	1.1%
Cases Processed	94	100.0%
Cases Pending 12/31/08	27	

Divorce New Cases Filed, 1998-2008



CLARION COUNTY

2008 Population Estimate: 39,989
 Class of County: 6th
 No. of Common Pleas Court Judgeships: 1



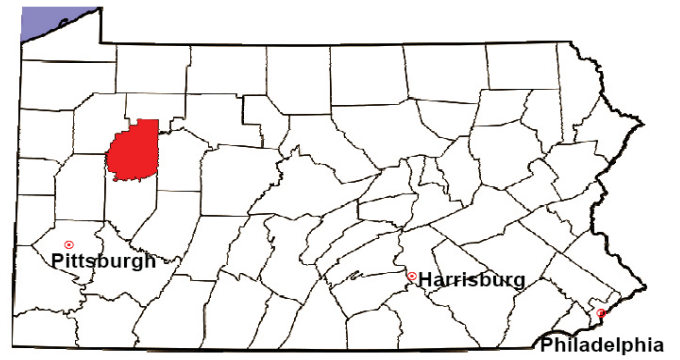
2008 Juvenile Dependency Abuse/Neglect	No. of Petitions	%
Cases Pending 1/1/08	0	
New Cases Filed in '08	7	
Cases Available for Processing	7	
Processed By:		
Judge	7	100.0%
Non-Judicial Officer	0	0.0%
Other	0	0.0%
Cases Processed	7	100.0%
Cases Pending 12/31/08	0	

Abuse/Neglect New Cases Filed, 2000-2008



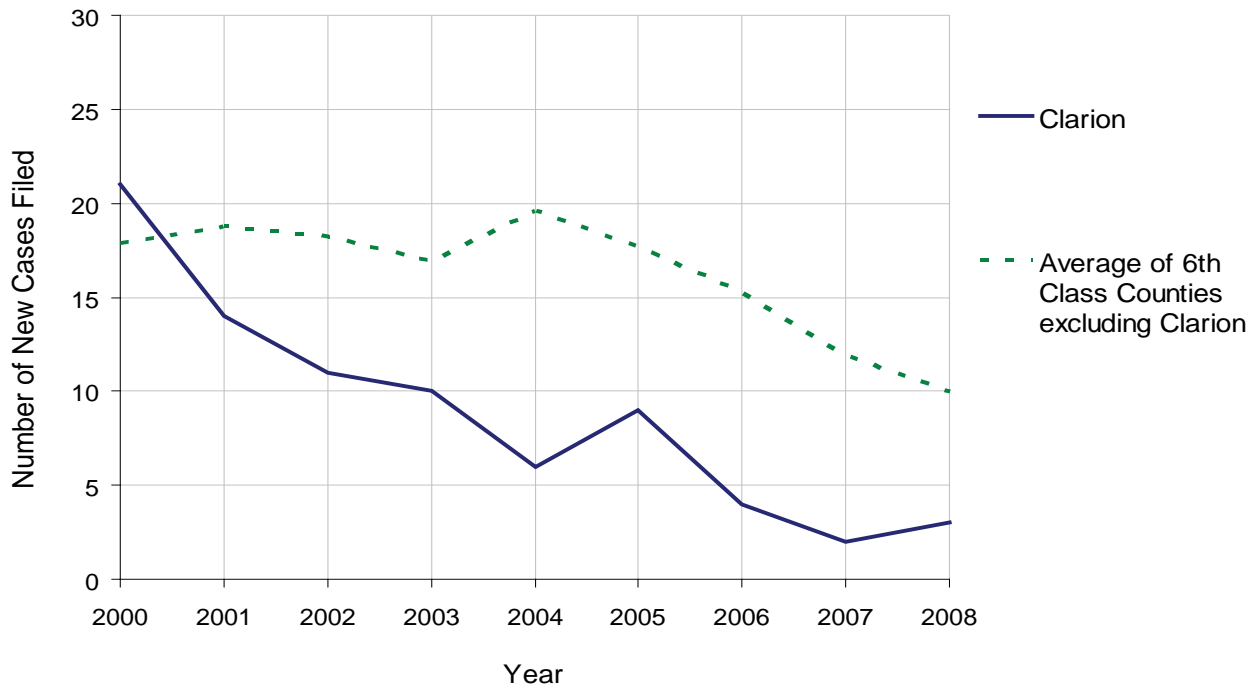
CLARION COUNTY

2008 Population Estimate: 39,989
 Class of County: 6th
 No. of Common Pleas Court Judgeships: 1



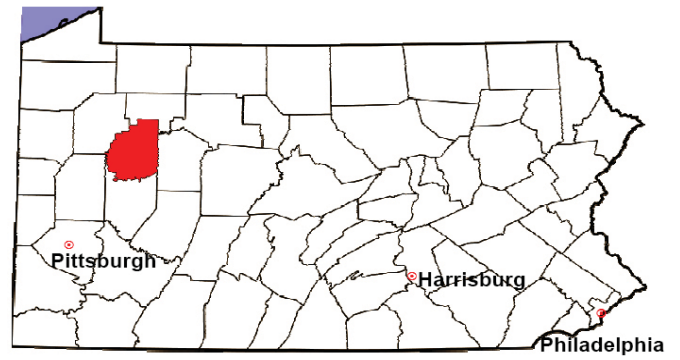
2008 Juvenile Dependency Status Offenses	No. of Petitions	%
Cases Pending 1/1/08	0	
New Cases Filed in '08	3	
Cases Available for Processing	3	
Processed By:		
Judge	3	100.0%
Non-Judicial Officer	0	0.0%
Other	0	0.0%
Cases Processed	3	100.0%
Cases Pending 12/31/08	0	

Status Offenses New Cases Filed, 2000-2008



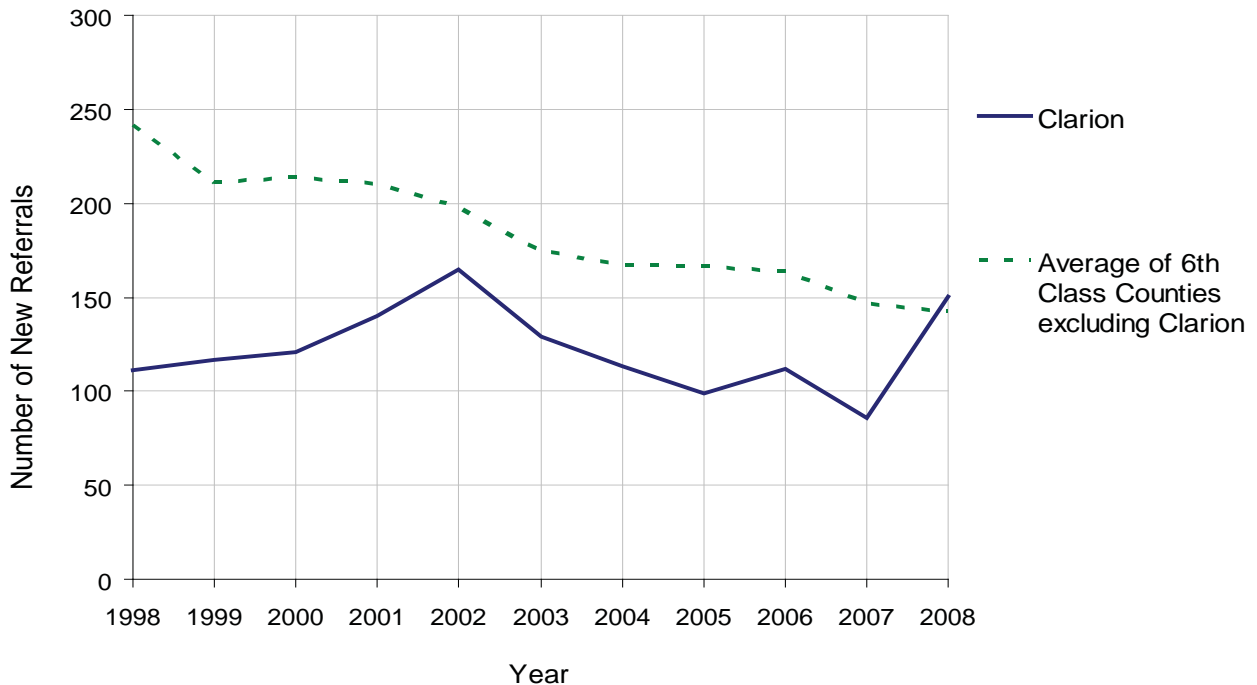
CLARION COUNTY

2008 Population Estimate: 39,989
 Class of County: 6th
 No. of Common Pleas Court Judgeships: 1



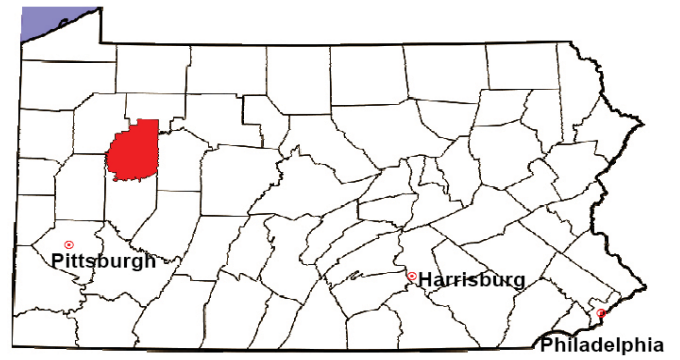
2008 Juvenile Delinquency	No. of Referrals	%
Cases Pending 1/1/08	25	
New Referrals in '08	150	
Cases Available for Processing	175	
Processed By:		
Judge	61	38.4%
Non-Judicial Officer	78	49.1%
Other	20	12.6%
Cases Processed	159	100.0%
Cases Pending 12/31/08	16	

Juvenile Delinquency New Referrals, 1998-2008



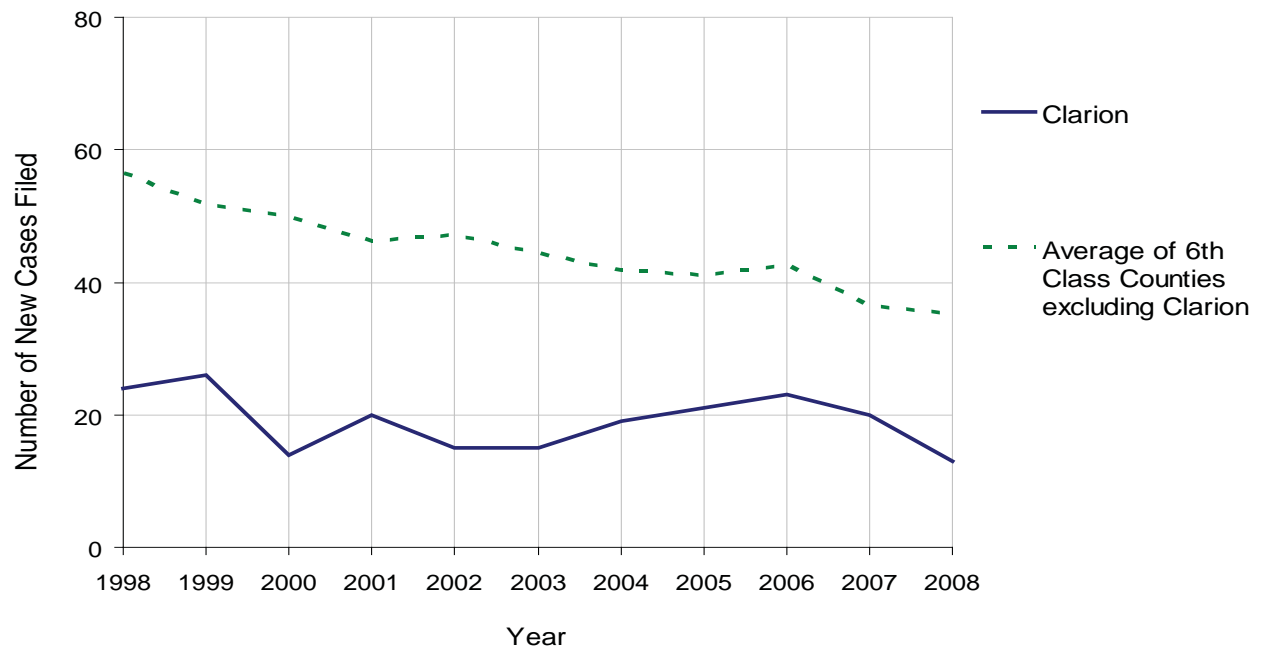
CLARION COUNTY

2008 Population Estimate: 39,989
 Class of County: 6th
 No. of Common Pleas Court Judgeships: 1



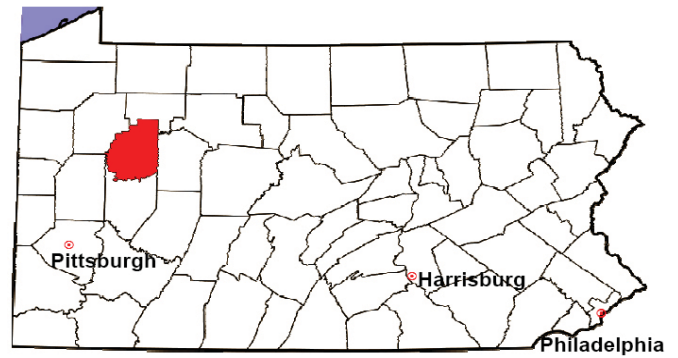
2008 Accounts	No. of Accounts	%
Cases Pending 1/1/08	2	
New Cases Filed in '08	13	
Cases Available for Processing	15	
Processed By:		
Contested before a Judge	1	8.3%
Contested before a Non-Judicial Officer	0	0.0%
Uncontested	11	91.7%
Other	0	0.0%
Cases Processed	12	100.0%
Cases Pending 12/31/08	3	

Accounts New Cases Filed, 1998-2008



CLARION COUNTY

2008 Population Estimate: 39,989
 Class of County: 6th
 No. of Common Pleas Court Judgeships: 1

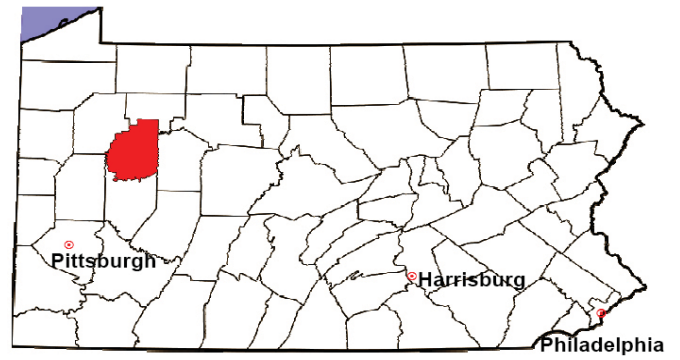


2008 Adoptions		No. of Cases	%
Cases Pending 1/1/08		1	
New Cases Filed in '08		12	
Cases Available for Processing		13	
Processed By:			
Contested before a Judge	Granted	7	63.6%
	Denied	0	0.0%
Uncontested	Granted	4	36.4%
	Denied	0	0.0%
Other		0	0.0%
Cases Processed		11	100.0%
Cases Pending 12/31/08		2	

Note: Prior to 2008, each petition was counted as one new case, regardless of the number of children listed on the petition. Starting in 2008, each child listed on a petition is counted as a separate case. Therefore, statistics for 2008 should not be compared with those for previous years.

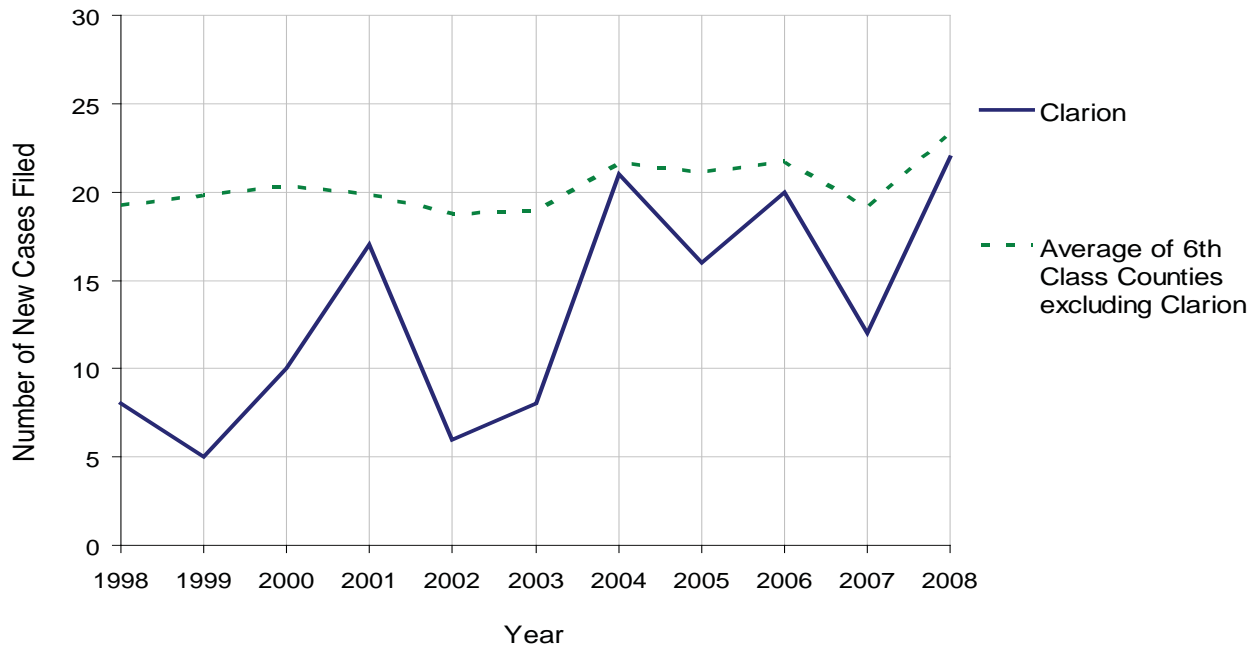
CLARION COUNTY

2008 Population Estimate: 39,989
 Class of County: 6th
 No. of Common Pleas Court Judgeships: 1



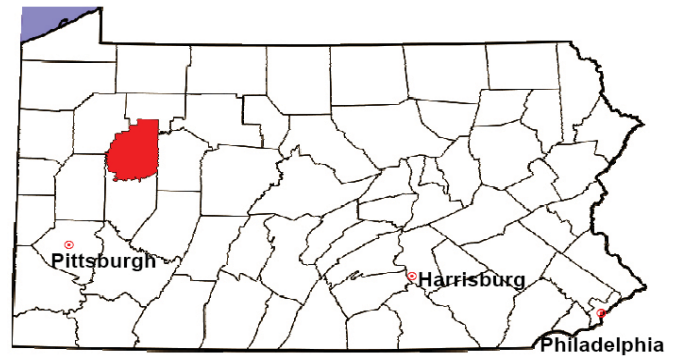
2008 Relinquishments/Terminations	No. of Petitions	%
Cases Pending 1/1/08	1	
New Cases Filed in '08	22	
Cases Available for Processing	23	
Processed By:		
Contested before a Judge	8	44.4%
Uncontested	8	44.4%
Other	2	11.1%
Cases Processed	18	100.0%
Cases Pending 12/31/08	5	

Relinquishments/Terminations New Cases Filed, 1998-2008



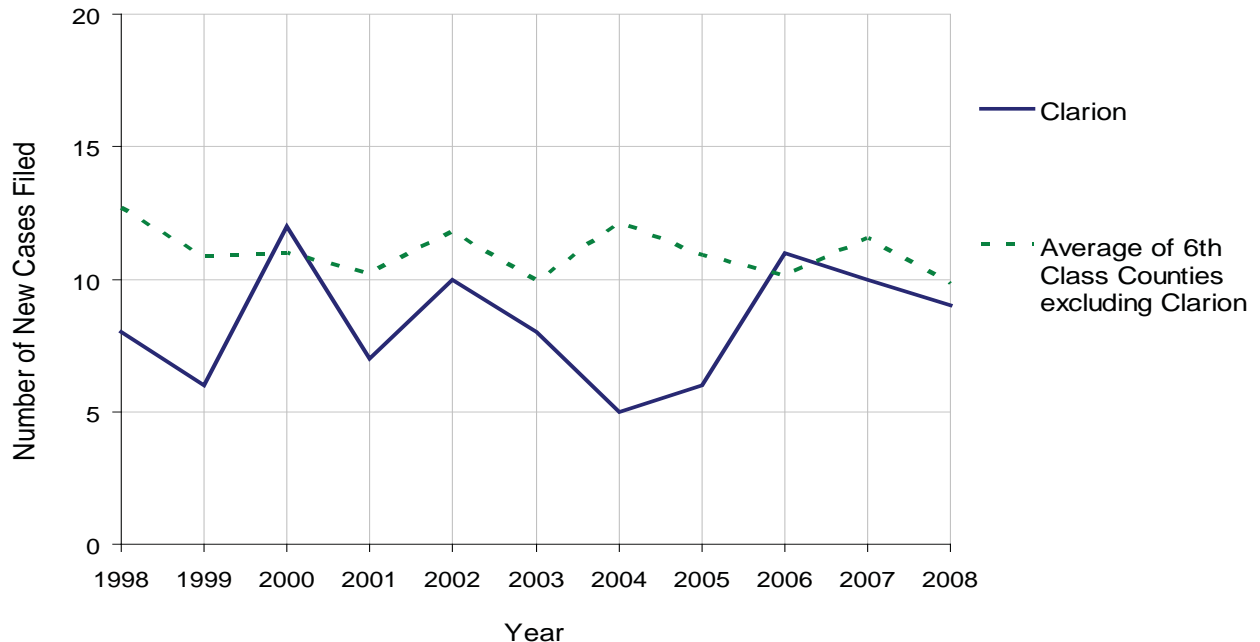
CLARION COUNTY

2008 Population Estimate: 39,989
 Class of County: 6th
 No. of Common Pleas Court Judgeships: 1



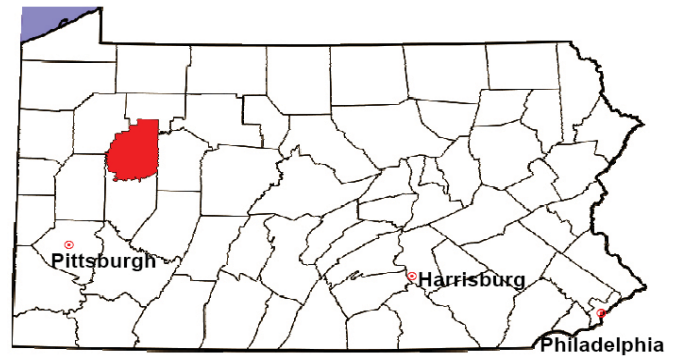
2008 Appointment of Guardians	No. of Petitions	%
Cases Pending 1/1/08	2	
New Cases Filed in '08	9	
Cases Available for Processing	11	
Processed By:		
Contested before a Judge	6	60.0%
Uncontested	4	40.0%
Other	0	0.0%
Cases Processed	10	100.0%
Cases Pending 12/31/08	1	

Appointment of Guardians New Cases Filed, 1998-2008



CLARION COUNTY

2008 Population Estimate: 39,989
 Class of County: 6th
 No. of Common Pleas Court Judgeships: 1



2008 Jury Activity & Performance Measures		
A. Juror Days		1,007
B. Number Sent to Voir Dire		1,300
	Voir Dire Attendance Rate $(B/A * 100)$	129.1%
C. Number of Voir Dires Started		29
	Juror Days Per Voir Dire Starts (A/C)	35
D. Number of Jurors Selected		408
	Juror Selection Rate $(D/B * 100)$	31.4%
E. Number of Jury Trials Started		23
	Juror Days Per Trial Starts (A/E)	44
	Number of Voir Dires Not Resulting in Trial $(C-E)$	6
	Percent Voir Dires Not Resulting in Trial $(C-E)/C * 100$	20.7%
F. Pool Days		12
G. Zero Panel Days		2
	Percent Zero Panel Days $(G/F * 100)$	16.7%
H. Total Juror Fees Incurred		\$16,113
	Average Juror Fees Per Trial (H/E)	\$701

Average Juror Fees Per Trial, 1998-2008

