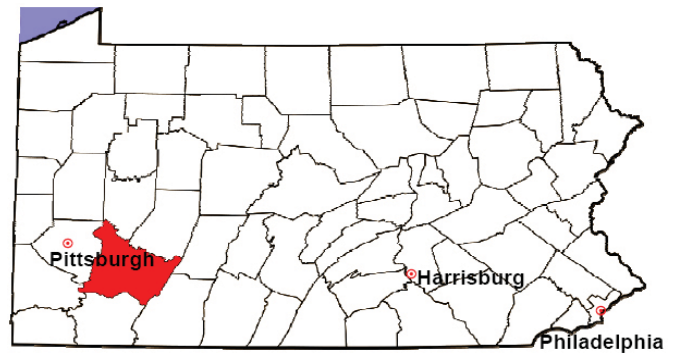


WESTMORELAND COUNTY

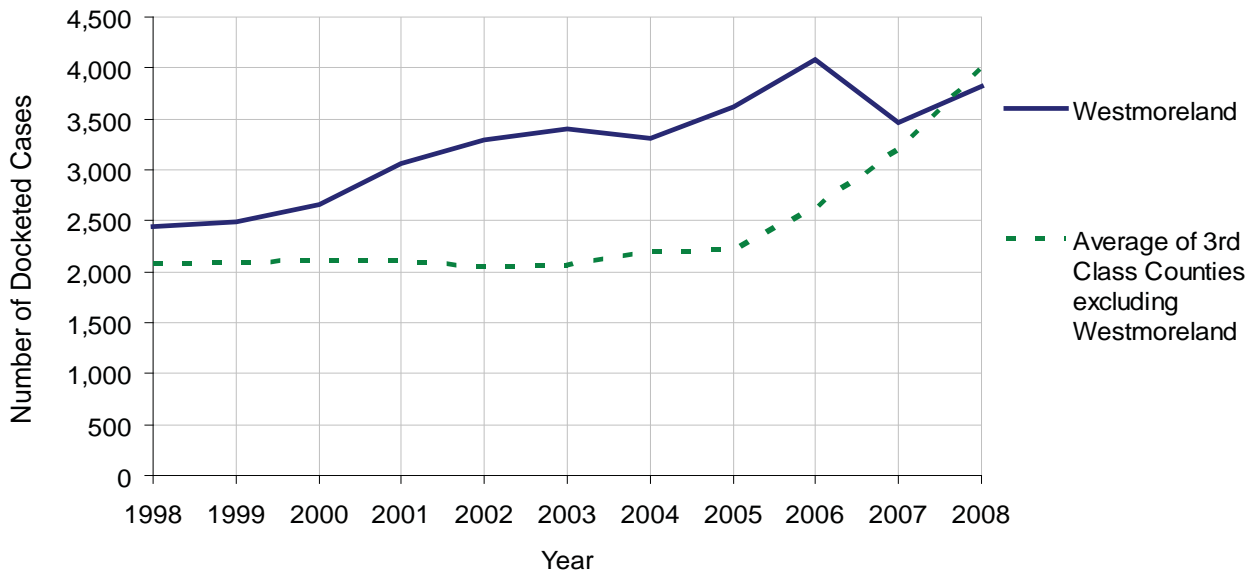
2008 Population Estimate: 361,589
 Class of County: 3rd
 No. of Common Pleas Court Judgeships: 11



2008 Civil	Civil Action		
Docketed Cases	3,825		
Arbitrated Cases	159		
Trial-Ready Cases:	Civil Action	Other	Total
Cases Pending 1/1/08	200	15	215
Became Trial Ready in '08	181	13	194
Restored to Trial List	0	0	0
Appeals from Arbitration	40	0	40
Cases Available for Trial	421	28	449
Disposed By:			
Settlement	166	12	178
Non-Jury Trial	15	3	18
Jury Trial	32	0	32
Stricken from Trial List	0	0	0
Other	47	6	53
Cases Disposed	260	21	281
Cases Pending 12/31/08	161	7	168

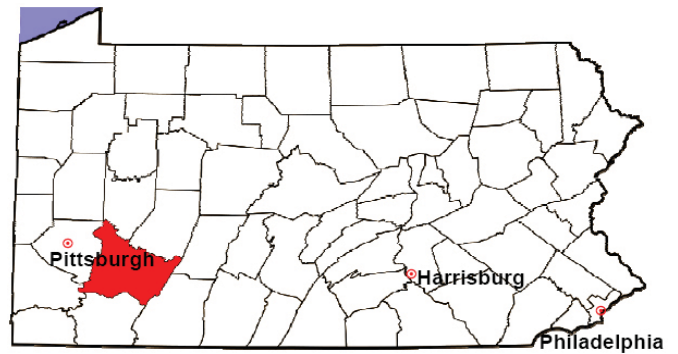
Age of Trial-Ready Cases as of 12/31/08 (Civil Action Only)		
0-6 months	58	36%
7-12 months	62	39%
13-18 months	27	17%
19-24 months	2	1%
25-30 months	7	4%
31-36 months	3	2%
Over 36 months	2	1%
Total	161	100%

Docketed Cases, 1998-2008



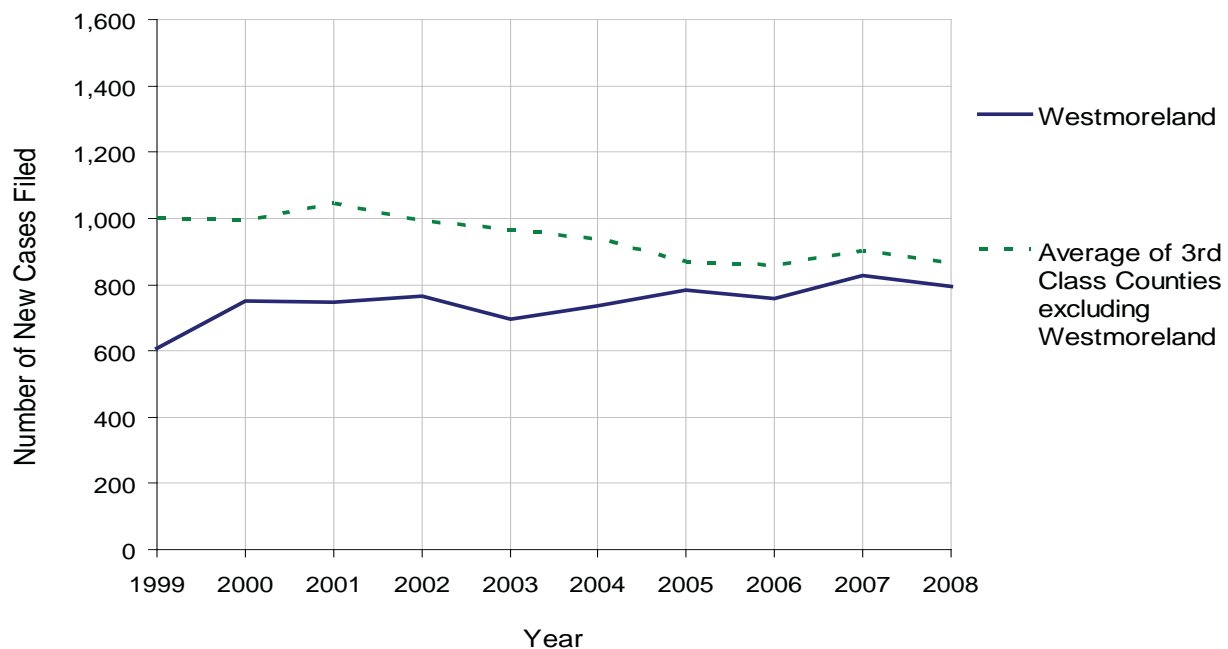
WESTMORELAND COUNTY

2008 Population Estimate: 361,589
 Class of County: 3rd
 No. of Common Pleas Court Judgeships: 11



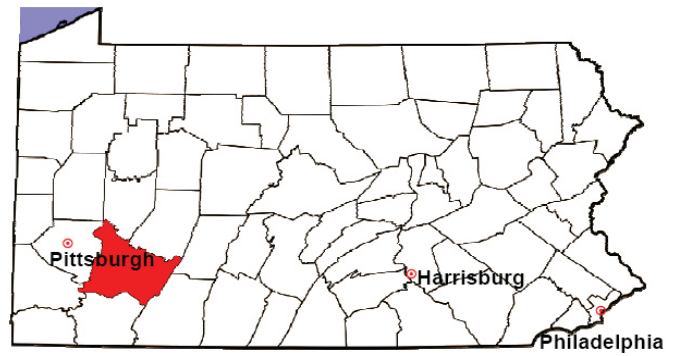
2008 Protection From Abuse	No. of Petitions	%
Cases Pending 1/1/08	116	
New Cases Filed in '08	794	
Cases Available for Processing	910	
Processed By:		
Final Order After Hearing	182	23.0%
Final Order by Stipulation or Agreement	130	16.4%
Dismissal	350	44.1%
Withdrawal	127	16.0%
Other	4	0.5%
Cases Processed	793	100.0%
Cases Pending 12/31/08	117	

PFA New Cases Filed, 1999-2008



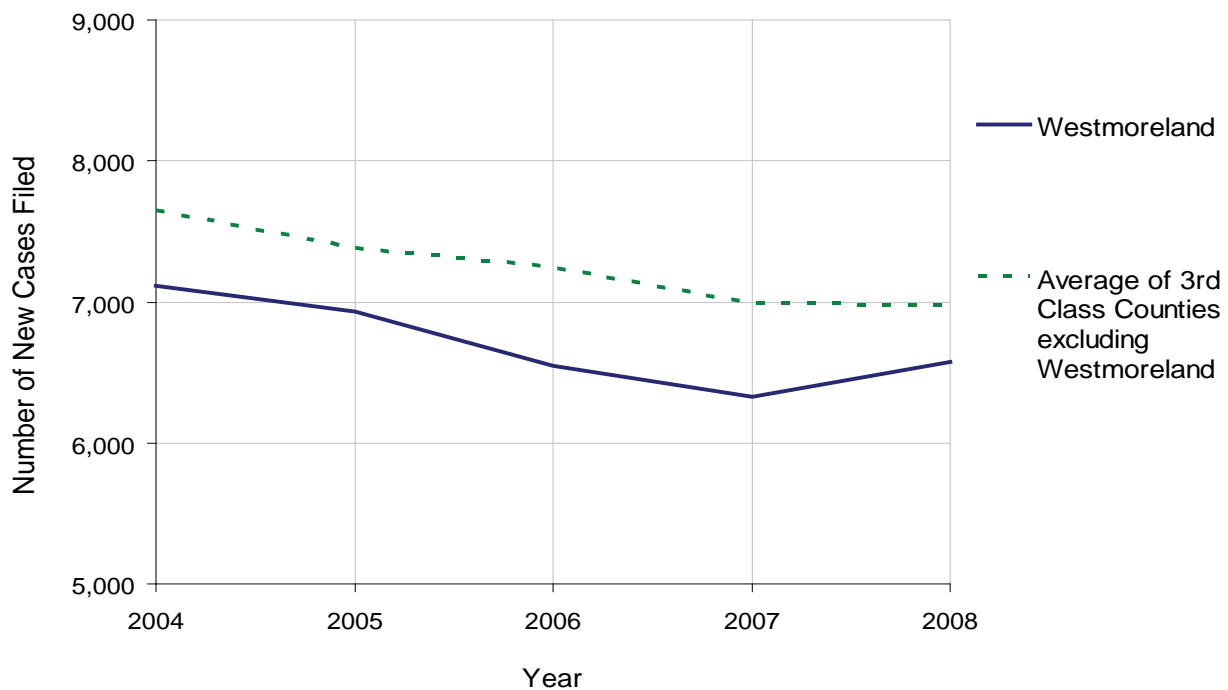
WESTMORELAND COUNTY

2008 Population Estimate: 361,589
 Class of County: 3rd
 No. of Common Pleas Court Judgeships: 11



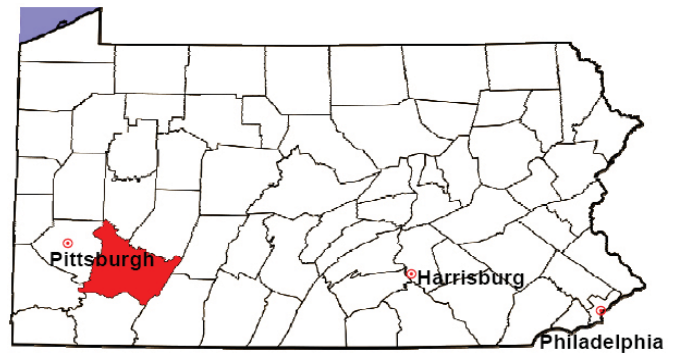
2008 Spousal & Child Support	No. of Petitions	%
Cases Pending 1/1/08	861	
New Cases Filed in '08	6,574	
Dockets Transferred In (+)	77	
Dockets Transferred Out (-)	51	
Cases Available for Processing	7,461	
Processed By:		
Judge	31	0.5%
Intake Officer	6,146	95.8%
Hearing Officer	240	3.7%
Other	0	0.0%
Cases Processed	6,417	100.0%
Cases Pending 12/31/08	1,044	

Spousal & Child Support New Cases Filed, 1998-2008



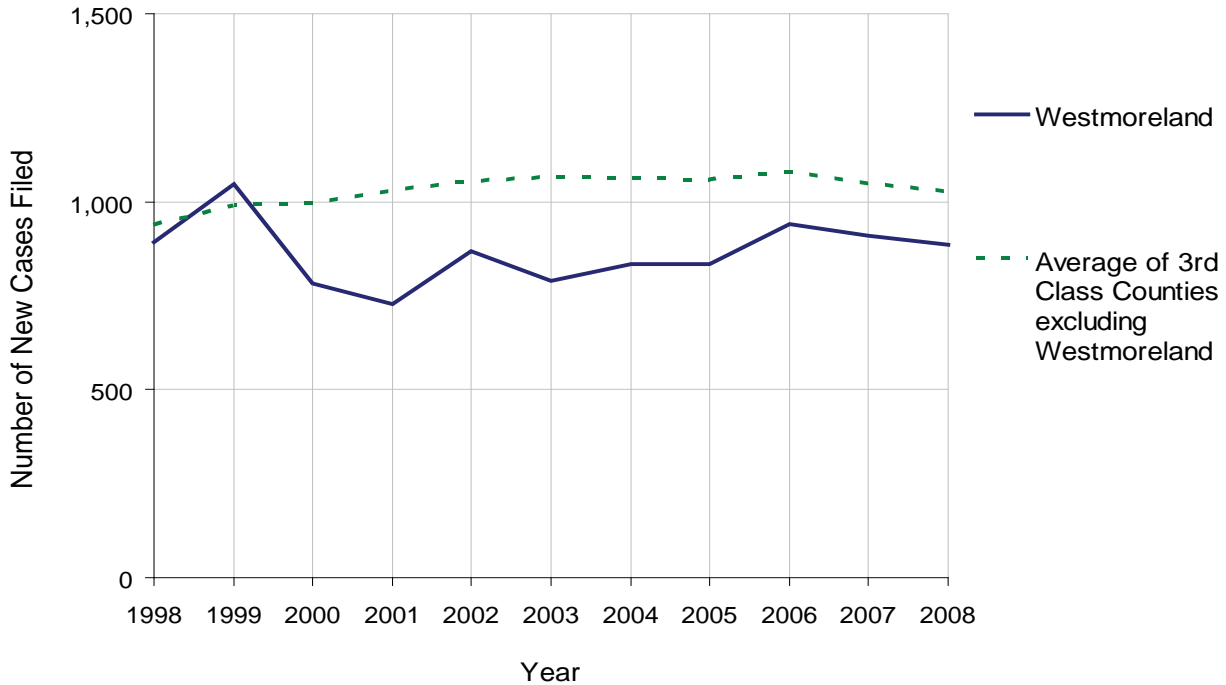
WESTMORELAND COUNTY

2008 Population Estimate: 361,589
 Class of County: 3rd
 No. of Common Pleas Court Judgeships: 11



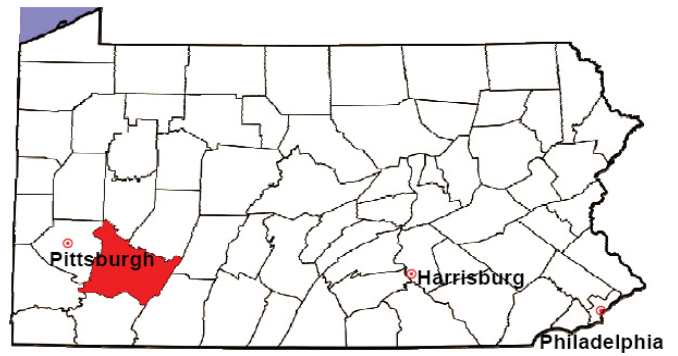
2008 Custody/Partial Custody/Visitation	No. of Petitions	%
Cases Pending 1/1/08	440	
New Cases Filed in '08	887	
Cases Available for Processing	1,327	
Processed By:		
Judge	233	28.8%
Non-Judicial Officer	423	52.3%
Other	153	18.9%
Cases Processed	809	100.0%
Cases Pending 12/31/08	518	

Custody/Partial Custody/Visitation New Cases Filed
 1998-2008



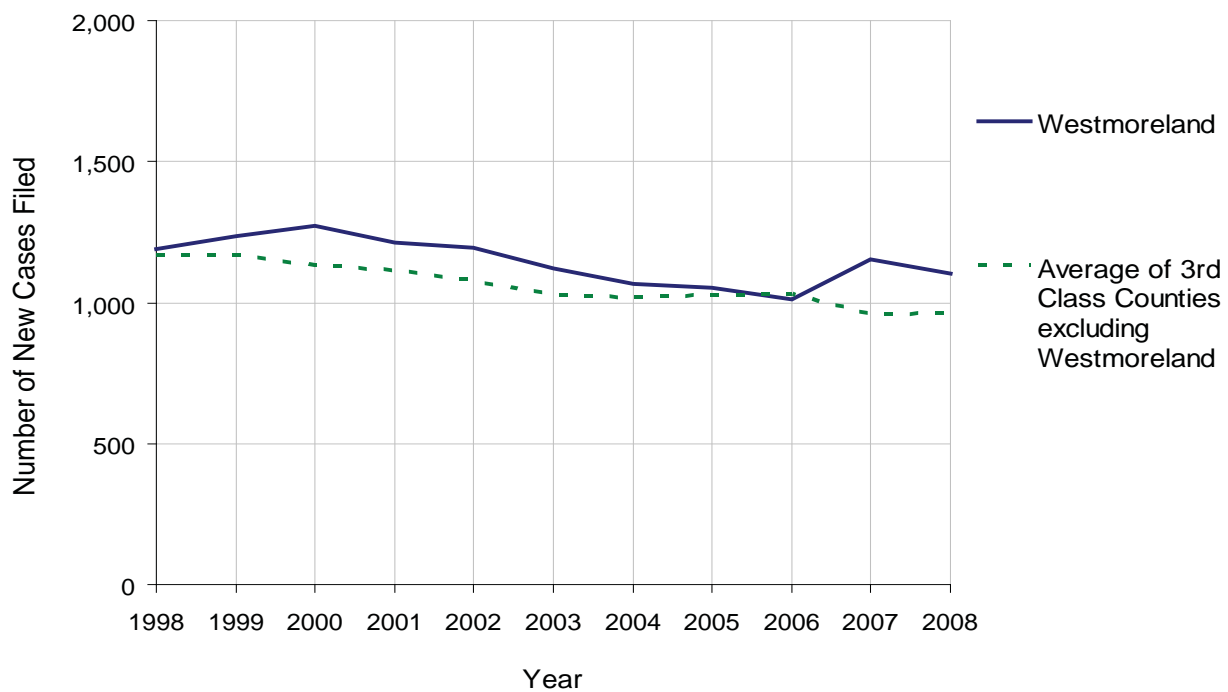
WESTMORELAND COUNTY

2008 Population Estimate: 361,589
 Class of County: 3rd
 No. of Common Pleas Court Judgeships: 11



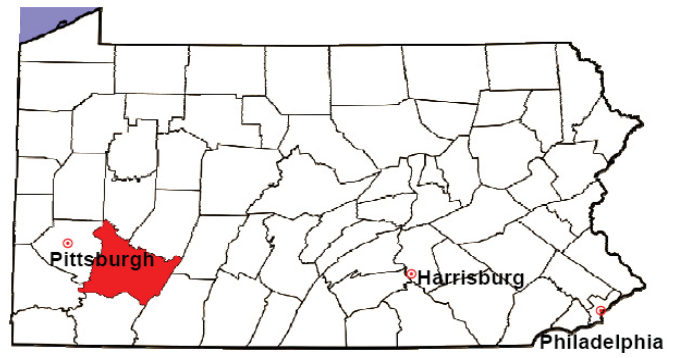
2008 Divorce	No. of Petitions	%
Cases Pending 1/1/08	3,188	
New Cases Filed in '08	1,105	
Cases Available for Processing	4,293	
Processed By:		
Contested Before a Judge	15	1.5%
Contested Before a Master	106	10.5%
Uncontested	858	84.8%
Other	33	3.3%
Cases Processed	1,012	100.0%
Cases Pending 12/31/08	3,281	

Divorce New Cases Filed, 1998-2008



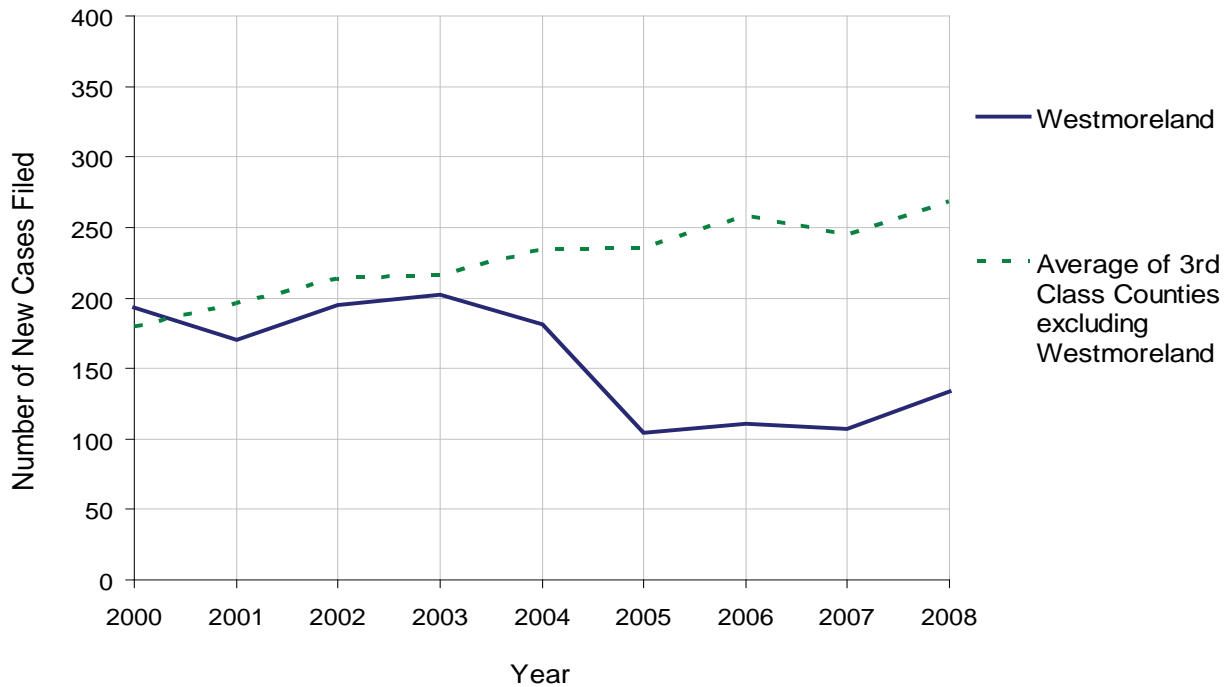
WESTMORELAND COUNTY

2008 Population Estimate: 361,589
 Class of County: 3rd
 No. of Common Pleas Court Judgeships: 11



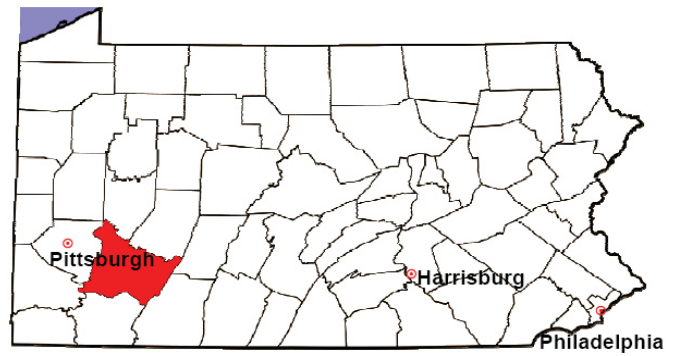
2008 Juvenile Dependency Abuse/Neglect	No. of Petitions	%
Cases Pending 1/1/08	40	
New Cases Filed in '08	134	
Cases Available for Processing	174	
Processed By:		
Judge	13	11.9%
Non-Judicial Officer	96	88.1%
Other	0	0.0%
Cases Processed	109	100.0%
Cases Pending 12/31/08	65	

Abuse/Neglect New Cases Filed, 2000-2008



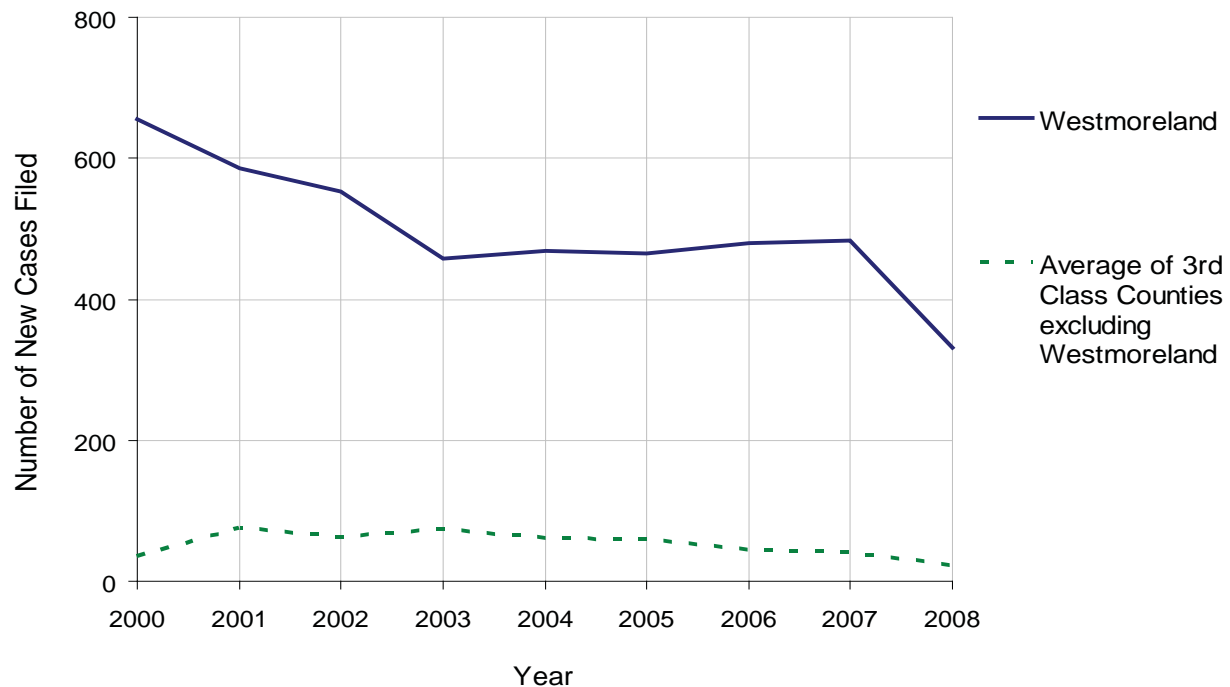
WESTMORELAND COUNTY

2008 Population Estimate: 361,589
 Class of County: 3rd
 No. of Common Pleas Court Judgeships: 11



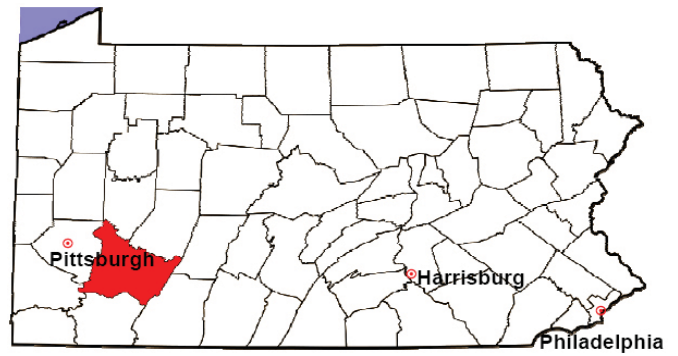
2008 Juvenile Dependency Status Offenses	No. of Petitions	%
Cases Pending 1/1/08	58	
New Cases Filed in '08	331	
Cases Available for Processing	389	
Processed By:		
Judge	14	3.7%
Non-Judicial Officer	344	91.5%
Other	18	4.8%
Cases Processed	376	100.0%
Cases Pending 12/31/08	13	

Status Offenses New Cases Filed, 2000-2008



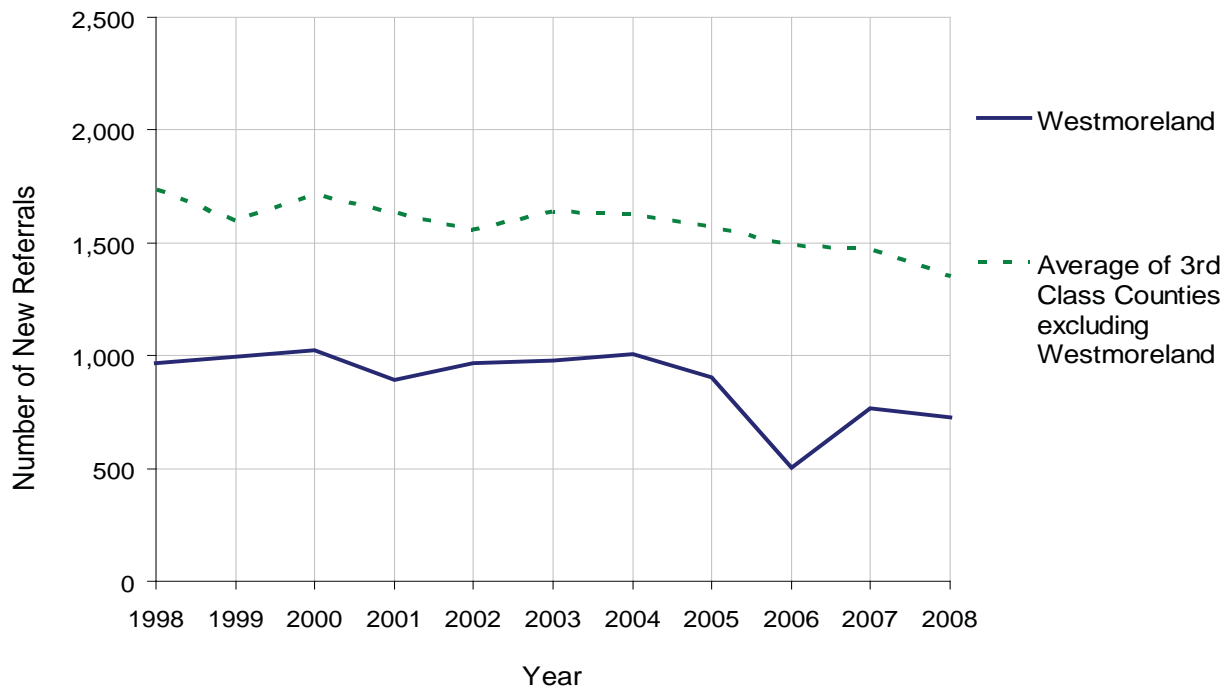
WESTMORELAND COUNTY

2008 Population Estimate: 361,589
 Class of County: 3rd
 No. of Common Pleas Court Judgeships: 11



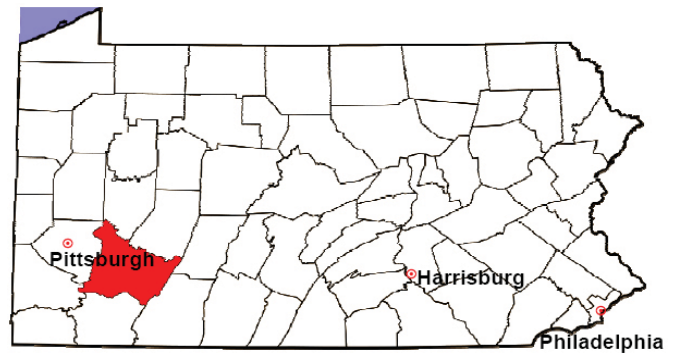
2008 Juvenile Delinquency	No. of Referrals	%
Cases Pending 1/1/08	220	
New Referrals in '08	729	
Cases Available for Processing	949	
Processed By:		
Judge	294	34.6%
Non-Judicial Officer	521	61.3%
Other	35	4.1%
Cases Processed	850	100.0%
Cases Pending 12/31/08	99	

Juvenile Delinquency New Referrals, 1998-2008



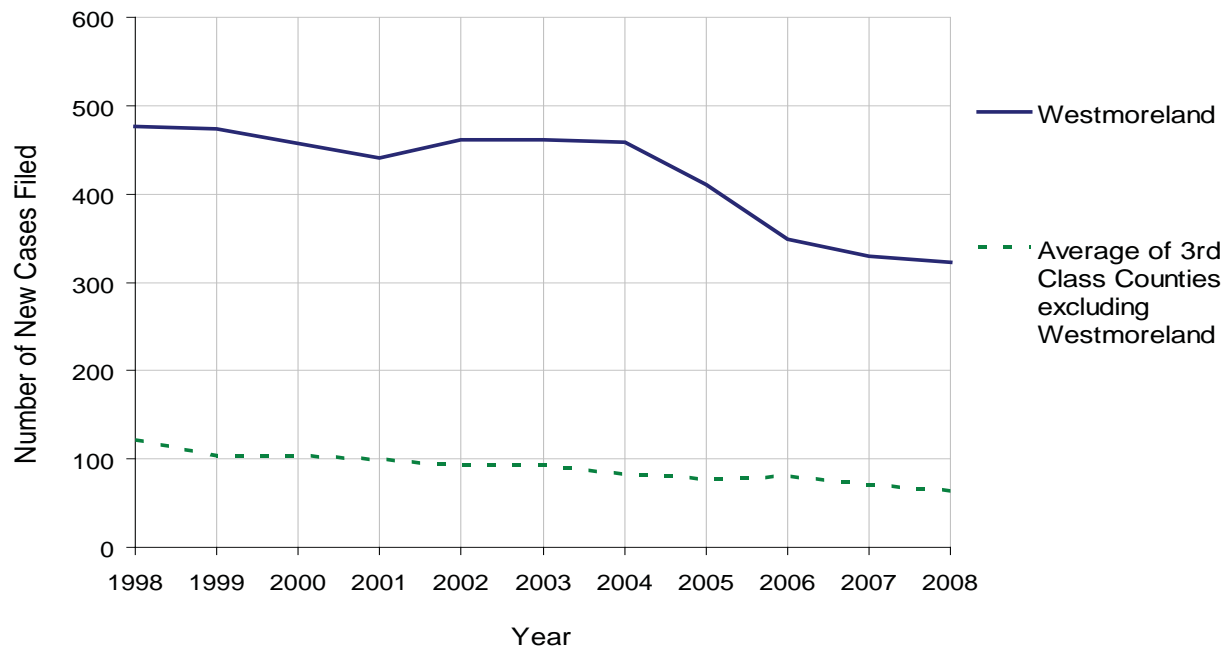
WESTMORELAND COUNTY

2008 Population Estimate: 361,589
 Class of County: 3rd
 No. of Common Pleas Court Judgeships: 11



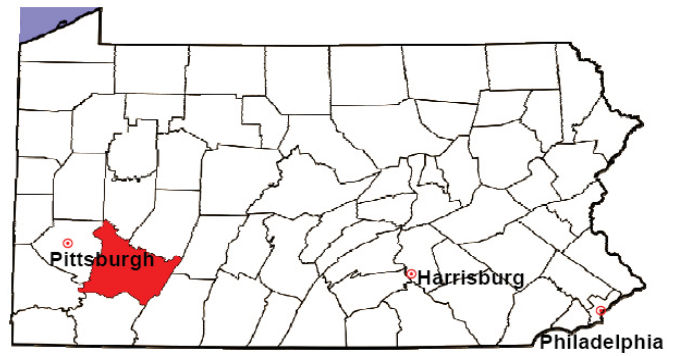
2008 Accounts	No. of Accounts	%
Cases Pending 1/1/08	126	
New Cases Filed in '08	323	
Cases Available for Processing	449	
Processed By:		
Contested before a Judge	5	1.5%
Contested before a Non-Judicial Officer	0	0.0%
Uncontested	321	98.5%
Other	0	0.0%
Cases Processed	326	100.0%
Cases Pending 12/31/08	123	

Accounts New Cases Filed, 1998-2008



WESTMORELAND COUNTY

2008 Population Estimate: 361,589
 Class of County: 3rd
 No. of Common Pleas Court Judgeships: 11

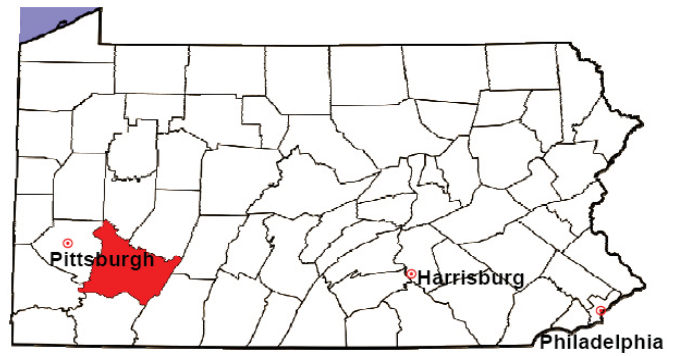


2008 Adoptions		No. of Cases	%
Cases Pending 1/1/08		12	
New Cases Filed in '08		121	
Cases Available for Processing		133	
Processed By:			
Contested before a Judge	Granted	0	0.0%
	Denied	0	0.0%
Uncontested	Granted	126	100.0%
	Denied	0	0.0%
Other		0	0.0%
Cases Processed		126	100.0%
Cases Pending 12/31/08		7	

Note: Prior to 2008, each petition was counted as one new case, regardless of the number of children listed on the petition. Starting in 2008, each child listed on a petition is counted as a separate case. Therefore, statistics for 2008 should not be compared with those for previous years.

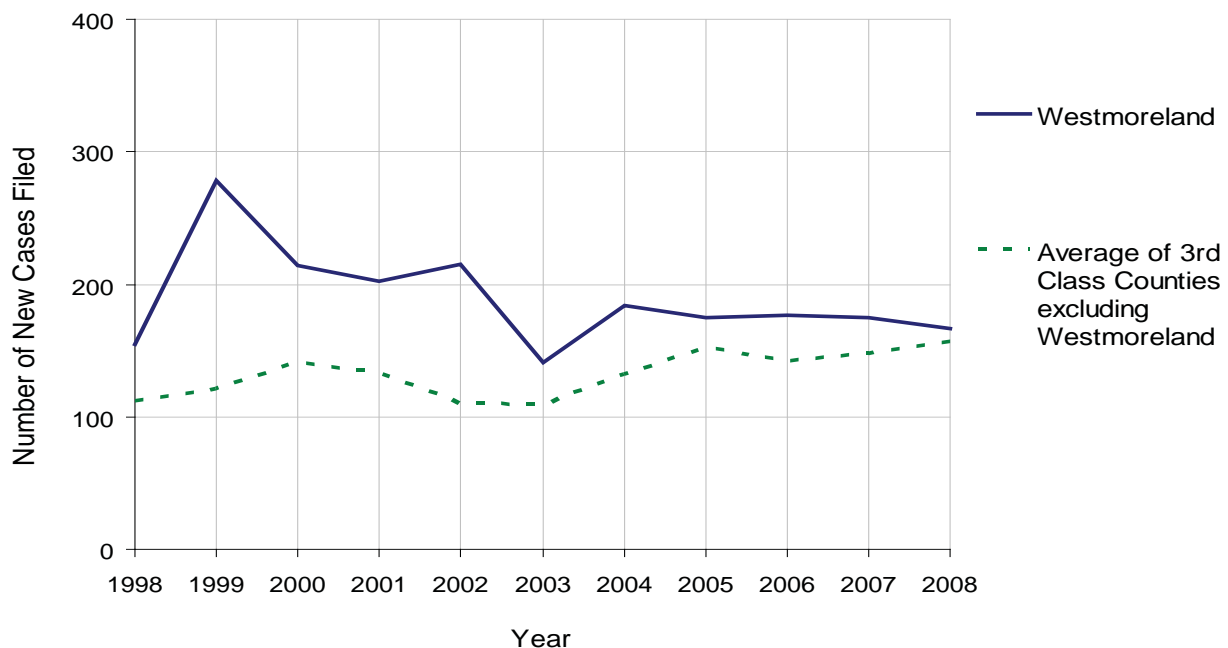
WESTMORELAND COUNTY

2008 Population Estimate: 361,589
 Class of County: 3rd
 No. of Common Pleas Court Judgeships: 11



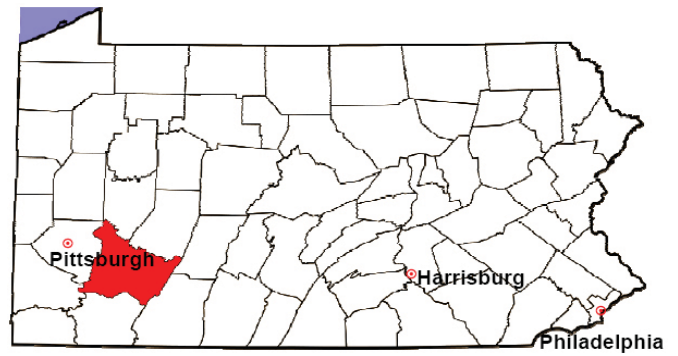
2008 Relinquishments/Terminations	No. of Petitions	%
Cases Pending 1/1/08	33	
New Cases Filed in '08	167	
Cases Available for Processing	200	
Processed By:		
Contested before a Judge	24	15.3%
Uncontested	127	80.9%
Other	6	3.8%
Cases Processed	157	100.0%
Cases Pending 12/31/08	43	

Relinquishments/Terminations New Cases Filed, 1998-2008



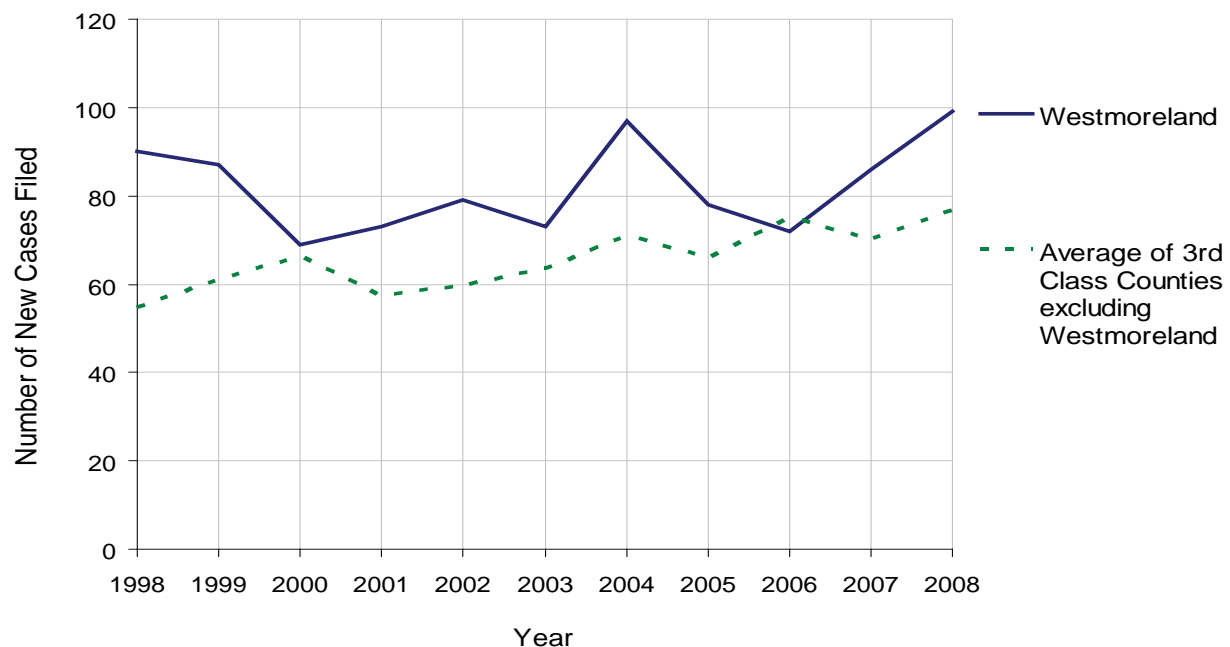
WESTMORELAND COUNTY

2008 Population Estimate: 361,589
 Class of County: 3rd
 No. of Common Pleas Court Judgeships: 11



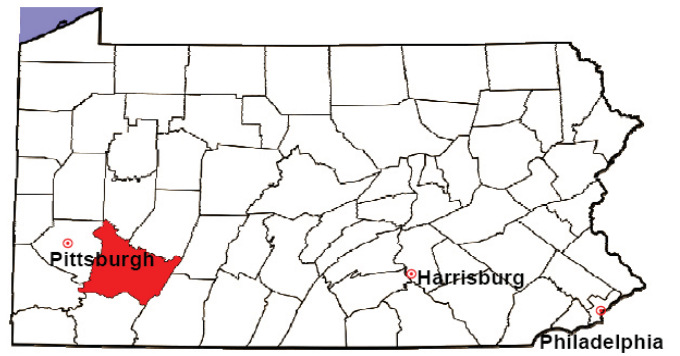
2008 Appointment of Guardians	No. of Petitions	%
Cases Pending 1/1/08	66	
New Cases Filed in '08	99	
Cases Available for Processing	165	
Processed By:		
Contested before a Judge	1	1.1%
Uncontested	75	79.8%
Other	18	19.1%
Cases Processed	94	100.0%
Cases Pending 12/31/08	71	

Appointment of Guardians New Cases Filed, 1998-2008



WESTMORELAND COUNTY

2008 Population Estimate: 361,589
 Class of County: 3rd
 No. of Common Pleas Court Judgeships: 11



2008 Jury Activity & Performance Measures		
A. Juror Days	5,418	
B. Number Sent to Voir Dire	3,415	
Voir Dire Attendance Rate $(B/A * 100)$		63.0%
C. Number of Voir Dires Started	83	
Juror Days Per Voir Dire Starts (A/C)		65
D. Number of Jurors Selected	945	
Juror Selection Rate $(D/B * 100)$		27.7%
E. Number of Jury Trials Started	71	
Juror Days Per Trial Starts (A/E)		76
Number of Voir Dires Not Resulting in Trial $(C-E)$		12
Percent Voir Dires Not Resulting in Trial $(C-E)/C * 100$		14.5%
F. Pool Days	61	
G. Zero Panel Days	12	
Percent Zero Panel Days $(G/F * 100)$		19.7%
H. Total Juror Fees Incurred	\$100,277	
Average Juror Fees Per Trial (H/E)		\$1,412

Average Juror Fees Per Trial, 1998-2008

