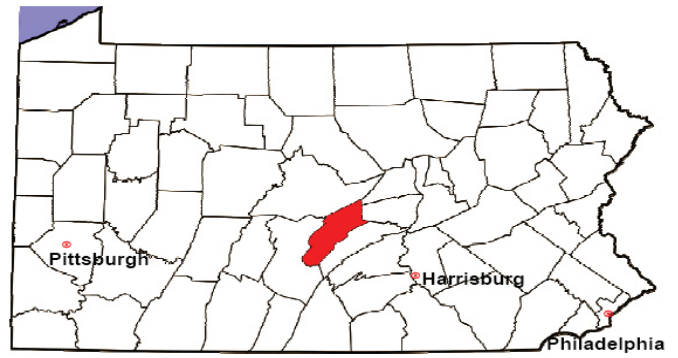


# MIFFLIN COUNTY

2008 Population Estimate: 46,062

Class of County: 6th

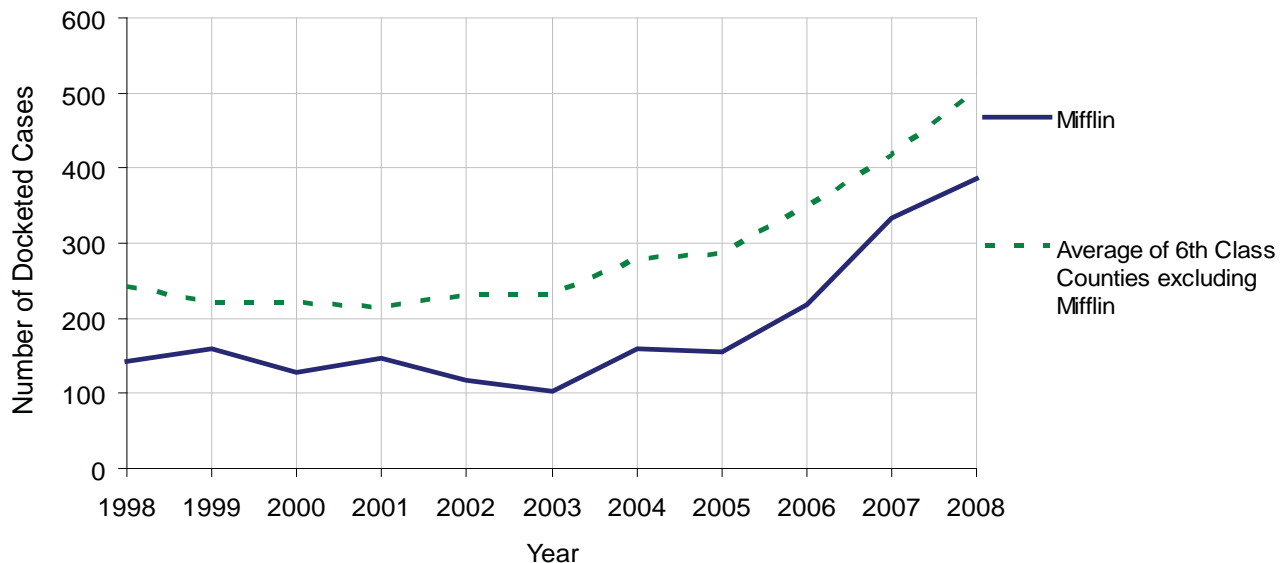
No. of Common Pleas Court Judgeships: 2



2008 Civil		Civil Action		
Docketed Cases		386		
Arbitrated Cases		2		
<b>Trial-Ready Cases:</b>		<b>Civil Action</b>	<b>Other</b>	<b>Total</b>
Cases Pending 1/1/08		10	0	10
Became Trial Ready in '08		9	0	9
Restored to Trial List		1	0	1
Appeals from Arbitration		0	0	0
<b>Cases Available for Trial</b>		<b>20</b>	<b>0</b>	<b>20</b>
<b>Disposed By:</b>				
Settlement		8	0	8
Non-Jury Trial		1	0	1
Jury Trial		1	0	1
Stricken from Trial List		1	0	1
Other		2	0	2
<b>Cases Disposed</b>		<b>13</b>	<b>0</b>	<b>13</b>
<b>Cases Pending 12/31/08</b>		<b>7</b>	<b>0</b>	<b>7</b>

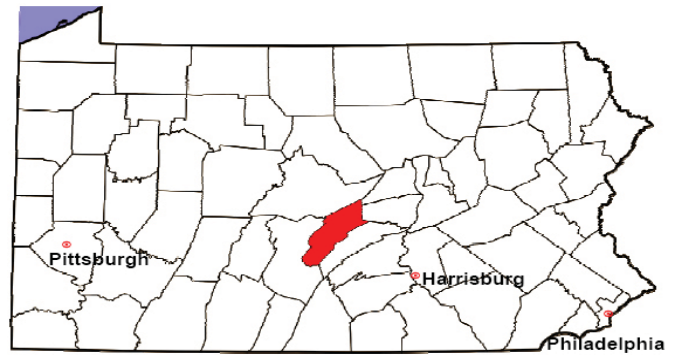
Age of Trial-Ready Cases as of 12/31/08 (Civil Action Only)		
0-6 months	4	57%
7-12 months	3	43%
13-18 months	0	0%
19-24 months	0	0%
25-30 months	0	0%
31-36 months	0	0%
Over 36 months	0	0%
<b>Total</b>	<b>7</b>	<b>100%</b>

Docketed Cases, 1998-2008



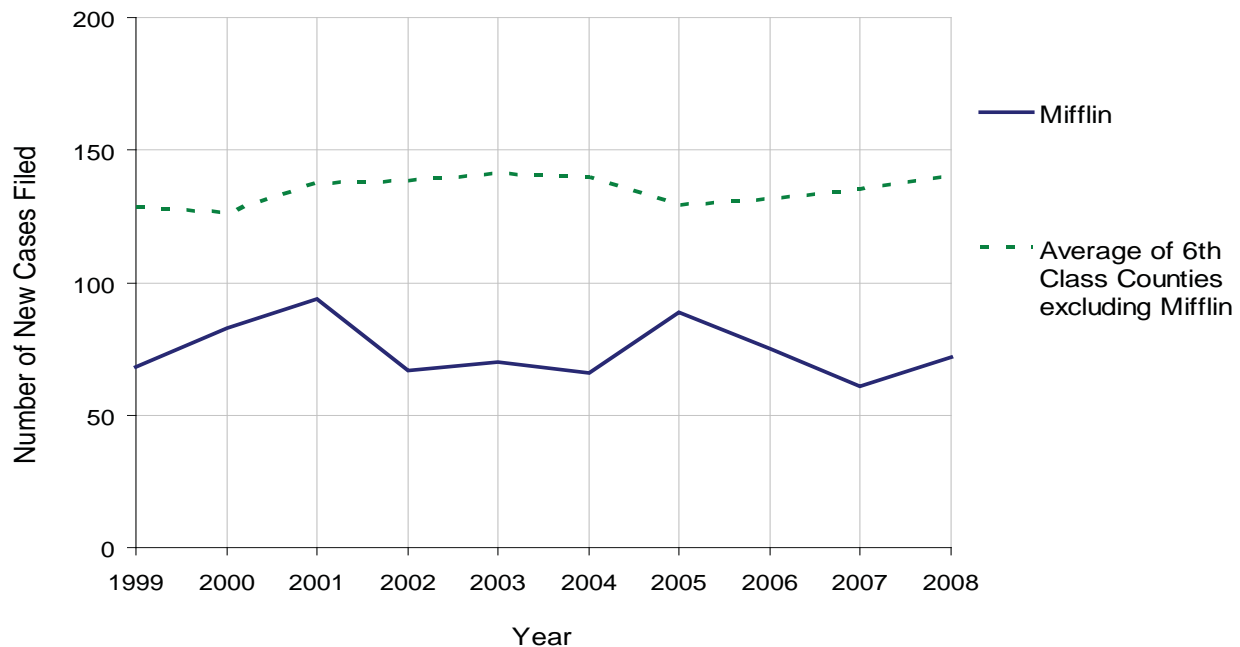
# MIFFLIN COUNTY

2008 Population Estimate: 46,062  
 Class of County: 6th  
 No. of Common Pleas Court Judgeships: 2



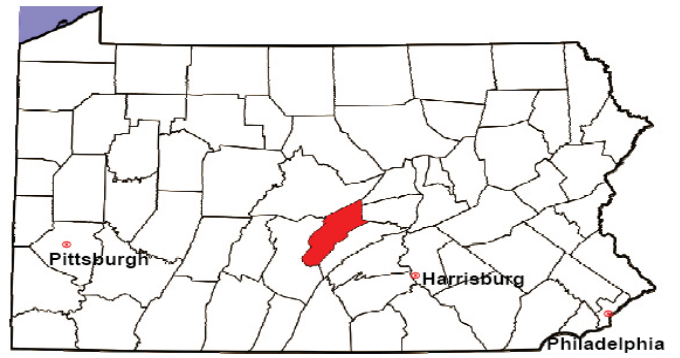
<b>2008 Protection From Abuse</b>	No. of Petitions	%
Cases Pending 1/1/08	3	
New Cases Filed in '08	72	
<b>Cases Available for Processing</b>	<b>75</b>	
Processed By:		
Final Order After Hearing	26	37.7%
Final Order by Stipulation or Agreement	23	33.3%
Dismissal	3	4.3%
Withdrawal	17	24.6%
Other	0	0.0%
<b>Cases Processed</b>	<b>69</b>	<b>100.0%</b>
<b>Cases Pending 12/31/08</b>	<b>6</b>	

PFA New Cases Filed, 1999-2008



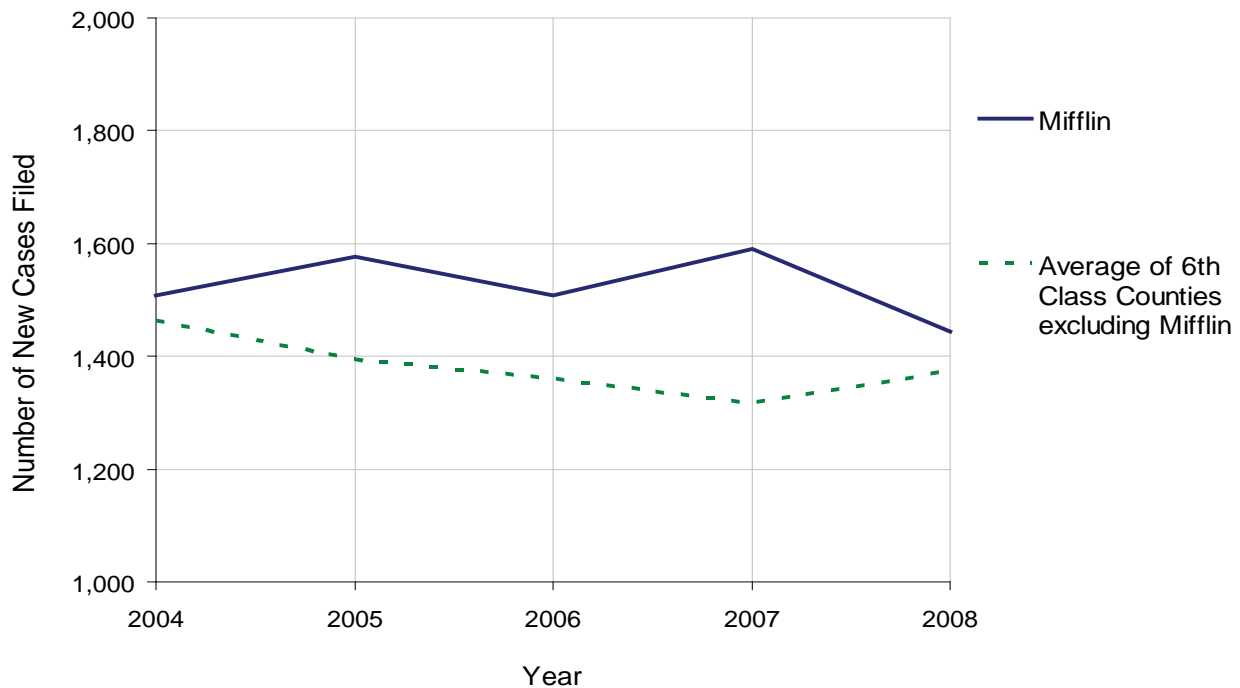
# MIFFLIN COUNTY

2008 Population Estimate: 46,062  
 Class of County: 6th  
 No. of Common Pleas Court Judgeships: 2



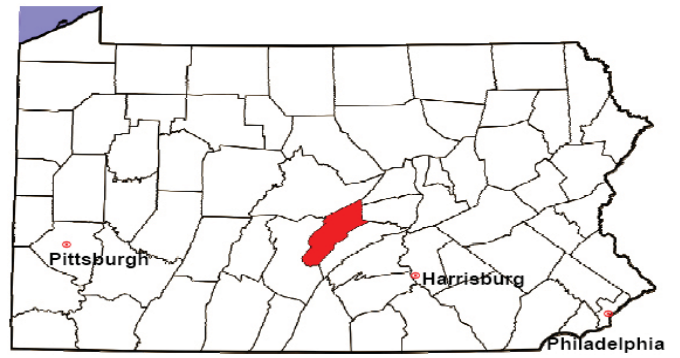
<b>2008 Spousal &amp; Child Support</b>	No. of Petitions	%
Cases Pending 1/1/08	211	
New Cases Filed in '08	1,443	
Dockets Transferred In (+)	17	
Dockets Transferred Out (-)	16	
<b>Cases Available for Processing</b>	<b>1,655</b>	
Processed By:		
Judge	51	3.4%
Intake Officer	1,442	96.6%
Hearing Officer	0	0.0%
Other	0	0.0%
<b>Cases Processed</b>	<b>1,493</b>	<b>100.0%</b>
<b>Cases Pending 12/31/08</b>	<b>162</b>	

Spousal & Child Support New Cases Filed, 1998-2008



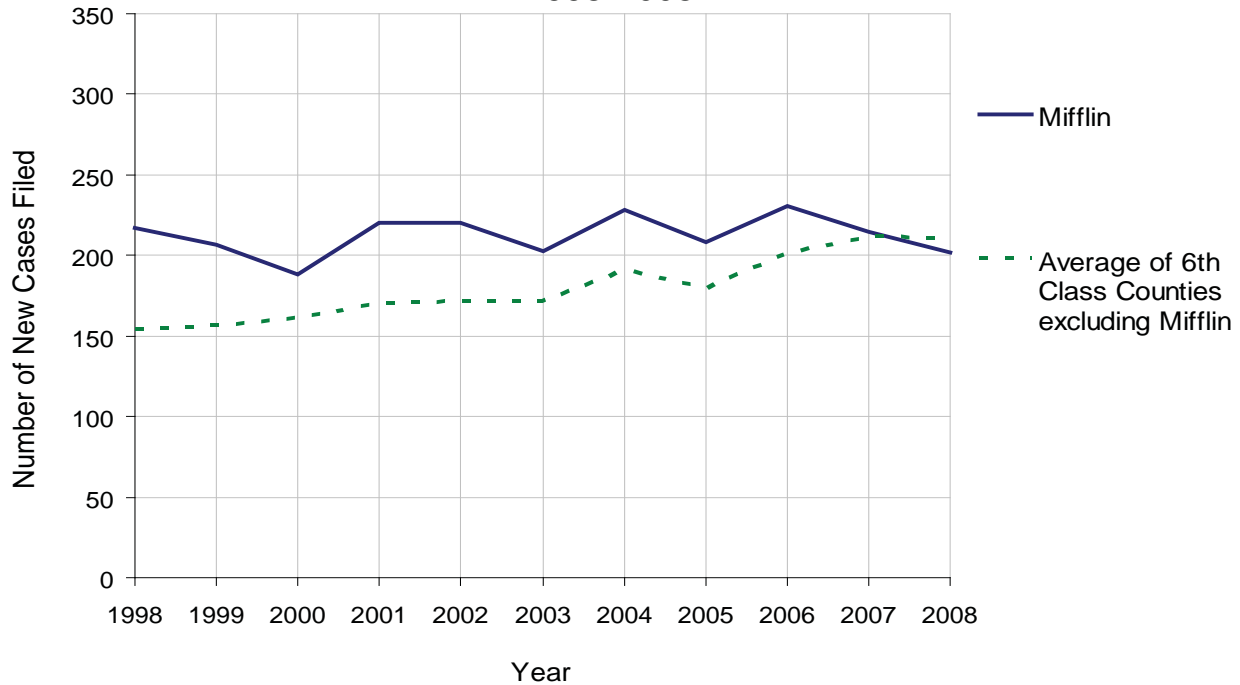
# MIFFLIN COUNTY

2008 Population Estimate: 46,062  
 Class of County: 6th  
 No. of Common Pleas Court Judgeships: 2



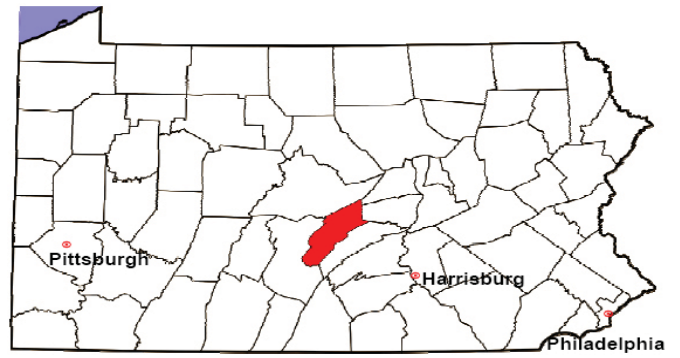
<b>2008 Custody/Partial Custody/Visitation</b>	No. of Petitions	%
Cases Pending 1/1/08	36	
New Cases Filed in '08	202	
<b>Cases Available for Processing</b>	<b>238</b>	
Processed By:		
Judge	85	47.2%
Non-Judicial Officer	0	0.0%
Other	95	52.8%
<b>Cases Processed</b>	<b>180</b>	<b>100.0%</b>
<b>Cases Pending 12/31/08</b>	<b>58</b>	

Custody/Partial Custody/Visitation New Cases Filed  
 1998-2008



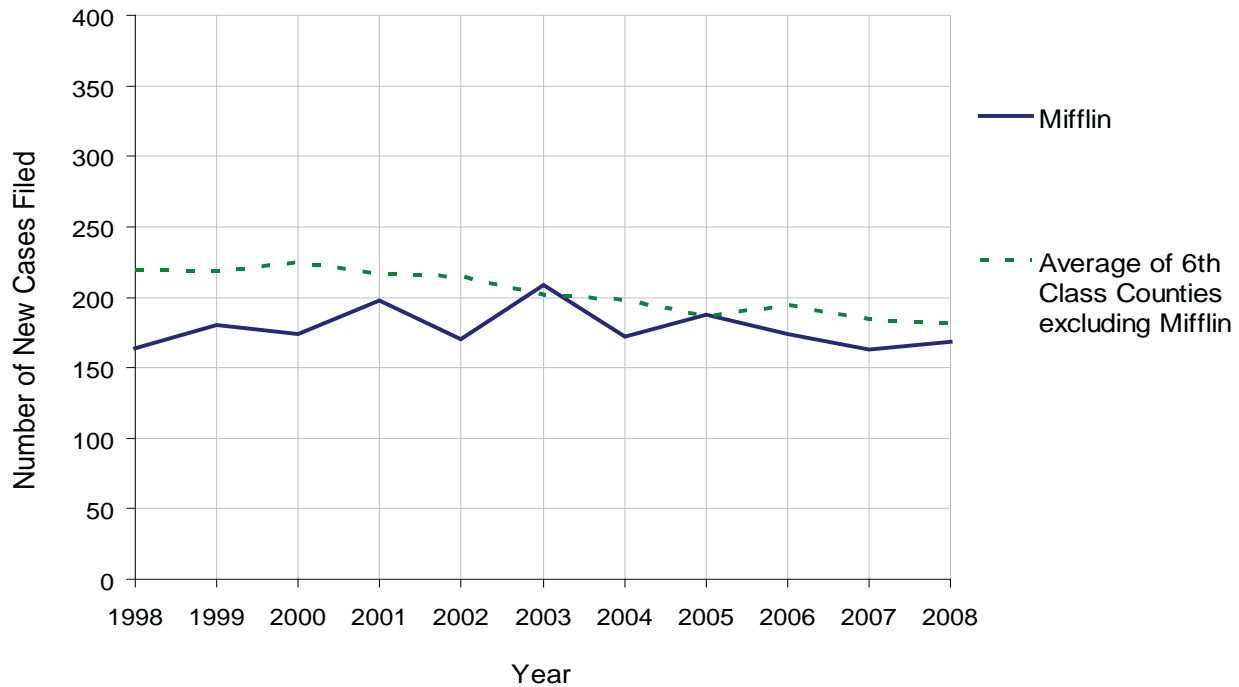
# MIFFLIN COUNTY

2008 Population Estimate: 46,062  
 Class of County: 6th  
 No. of Common Pleas Court Judgeships: 2



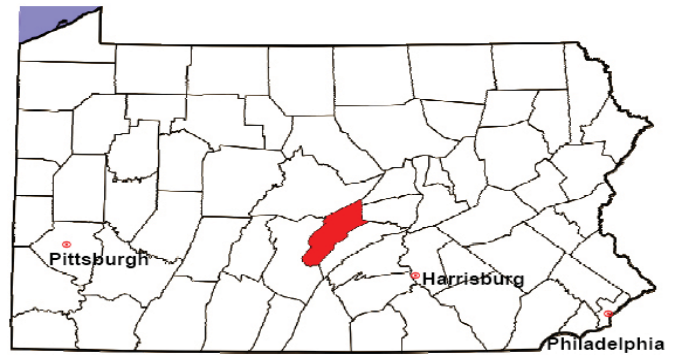
<b>2008 Divorce</b>	No. of Petitions	%
Cases Pending 1/1/08	138	
New Cases Filed in '08	168	
<b>Cases Available for Processing</b>	<b>306</b>	
Processed By:		
Contested Before a Judge	0	0.0%
Contested Before a Master	0	0.0%
Uncontested	146	100.0%
Other	0	0.0%
<b>Cases Processed</b>	<b>146</b>	<b>100.0%</b>
<b>Cases Pending 12/31/08</b>	<b>160</b>	

Divorce New Cases Filed, 1998-2008



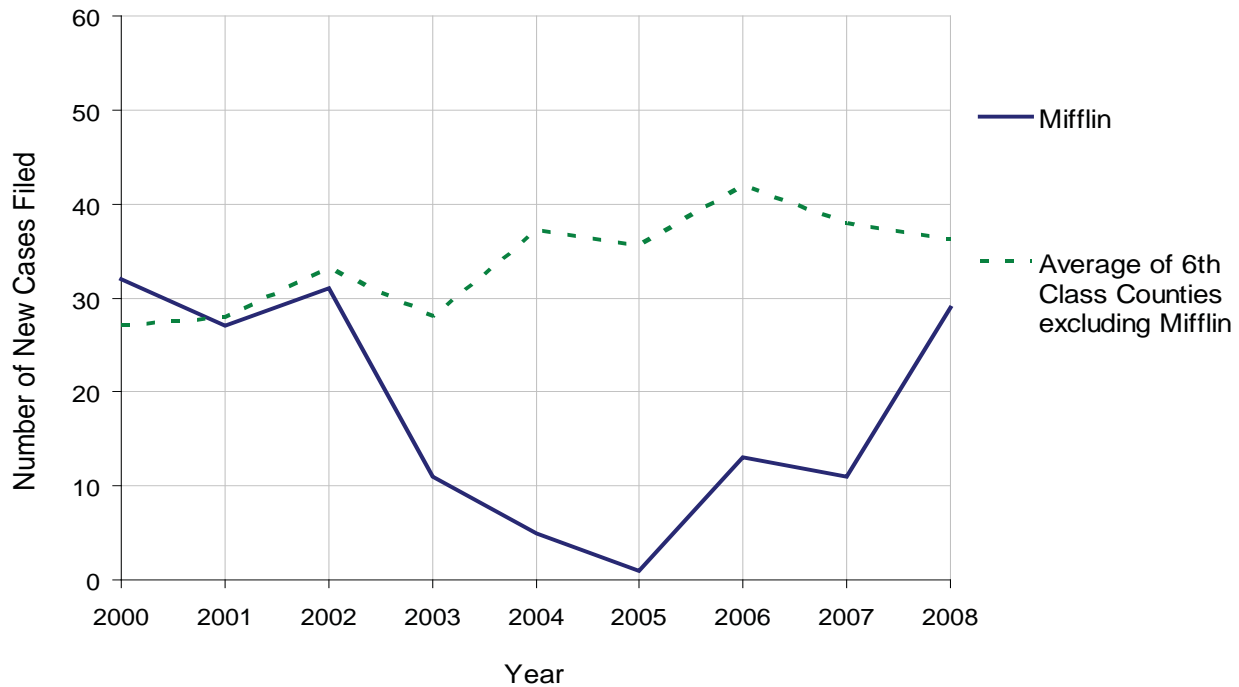
# MIFFLIN COUNTY

2008 Population Estimate: 46,062  
 Class of County: 6th  
 No. of Common Pleas Court Judgeships: 2



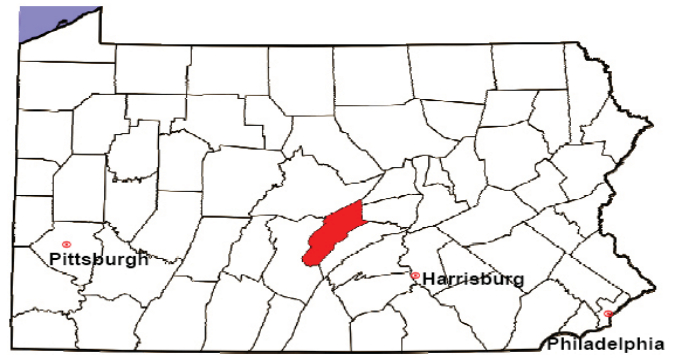
2008 Juvenile Dependency Abuse/Neglect	No. of Petitions	%
Cases Pending 1/1/08	0	
New Cases Filed in '08	29	
<b>Cases Available for Processing</b>	<b>29</b>	
Processed By:		
Judge	25	96.2%
Non-Judicial Officer	0	0.0%
Other	1	3.8%
<b>Cases Processed</b>	<b>26</b>	<b>100.0%</b>
<b>Cases Pending 12/31/08</b>	<b>3</b>	

Abuse/Neglect New Cases Filed, 2000-2008



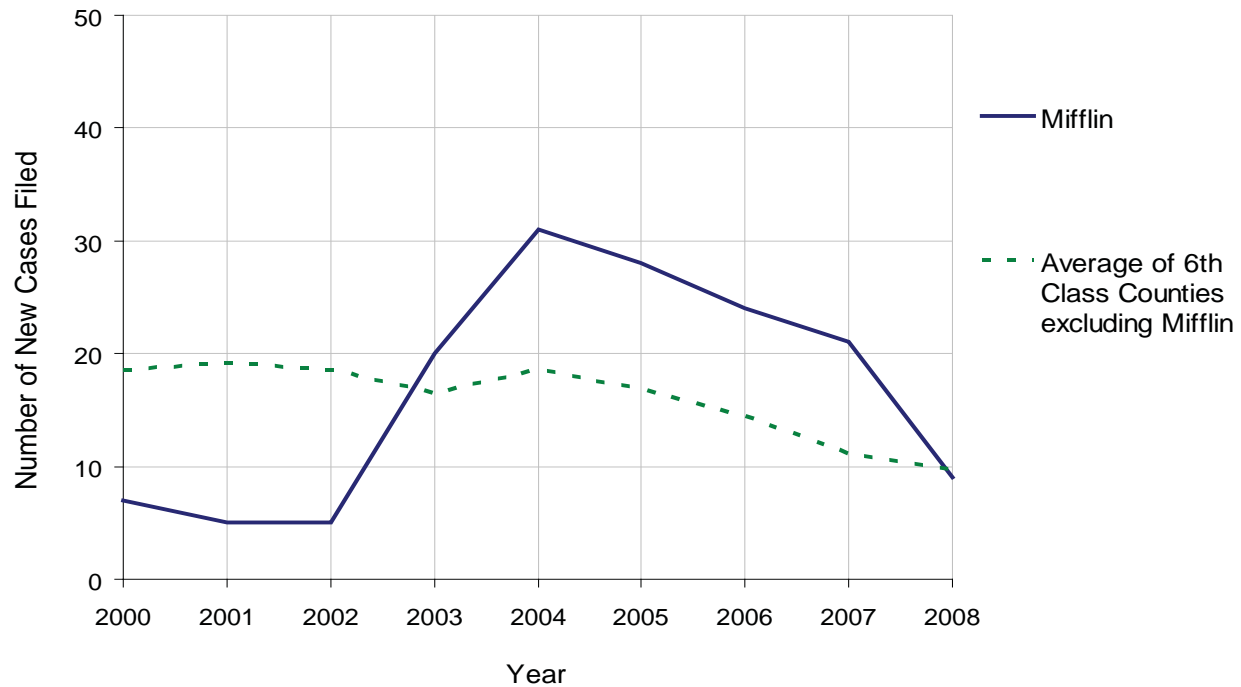
# MIFFLIN COUNTY

2008 Population Estimate: 46,062  
 Class of County: 6th  
 No. of Common Pleas Court Judgeships: 2



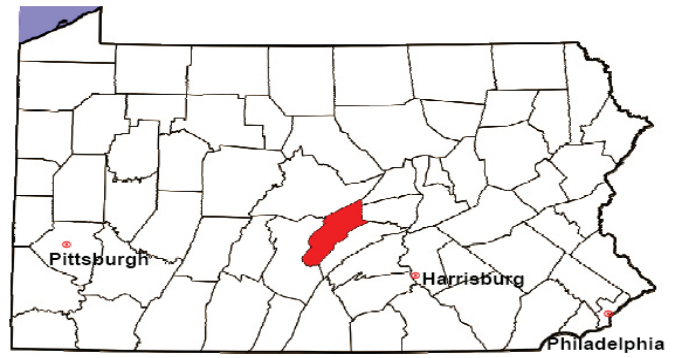
2008 Juvenile Dependency Status Offenses	No. of Petitions	%
Cases Pending 1/1/08	0	
New Cases Filed in '08	9	
<b>Cases Available for Processing</b>	<b>9</b>	
Processed By:		
Judge	9	100.0%
Non-Judicial Officer	0	0.0%
Other	0	0.0%
<b>Cases Processed</b>	<b>9</b>	<b>100.0%</b>
<b>Cases Pending 12/31/08</b>	<b>0</b>	

Status Offenses New Cases Filed, 2000-2008



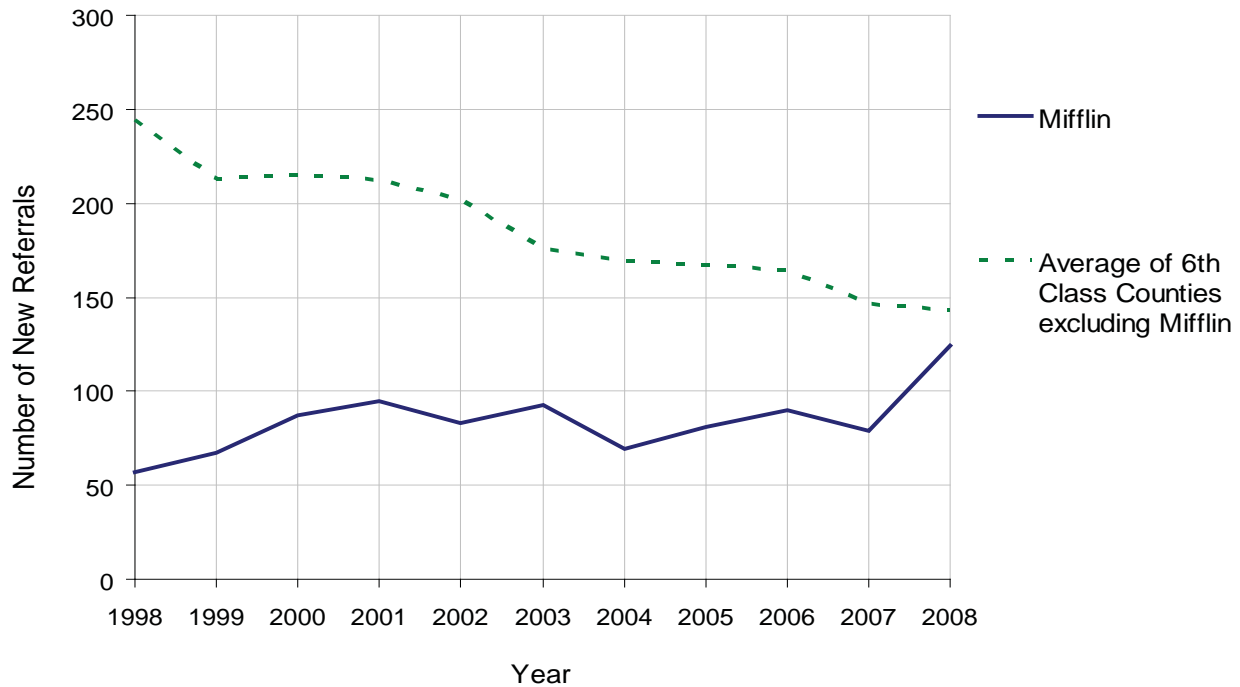
# MIFFLIN COUNTY

2008 Population Estimate: 46,062  
 Class of County: 6th  
 No. of Common Pleas Court Judgeships: 2



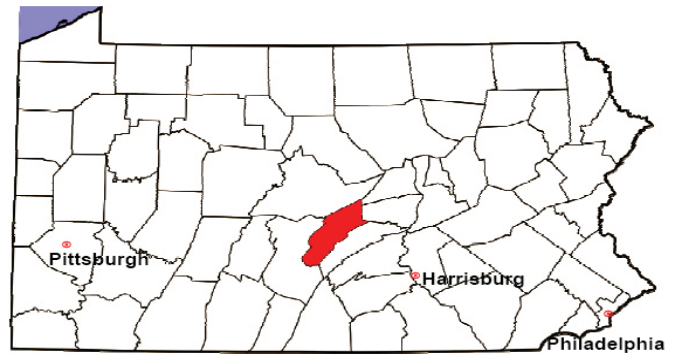
2008 Juvenile Delinquency	No. of Referrals	%
Cases Pending 1/1/08	22	
New Referrals in '08	124	
<b>Cases Available for Processing</b>	<b>146</b>	
Processed By:		
Judge	94	84.7%
Non-Judicial Officer	15	13.5%
Other	2	1.8%
<b>Cases Processed</b>	<b>111</b>	<b>100.0%</b>
<b>Cases Pending 12/31/08</b>	<b>35</b>	

Juvenile Delinquency New Referrals, 1998-2008



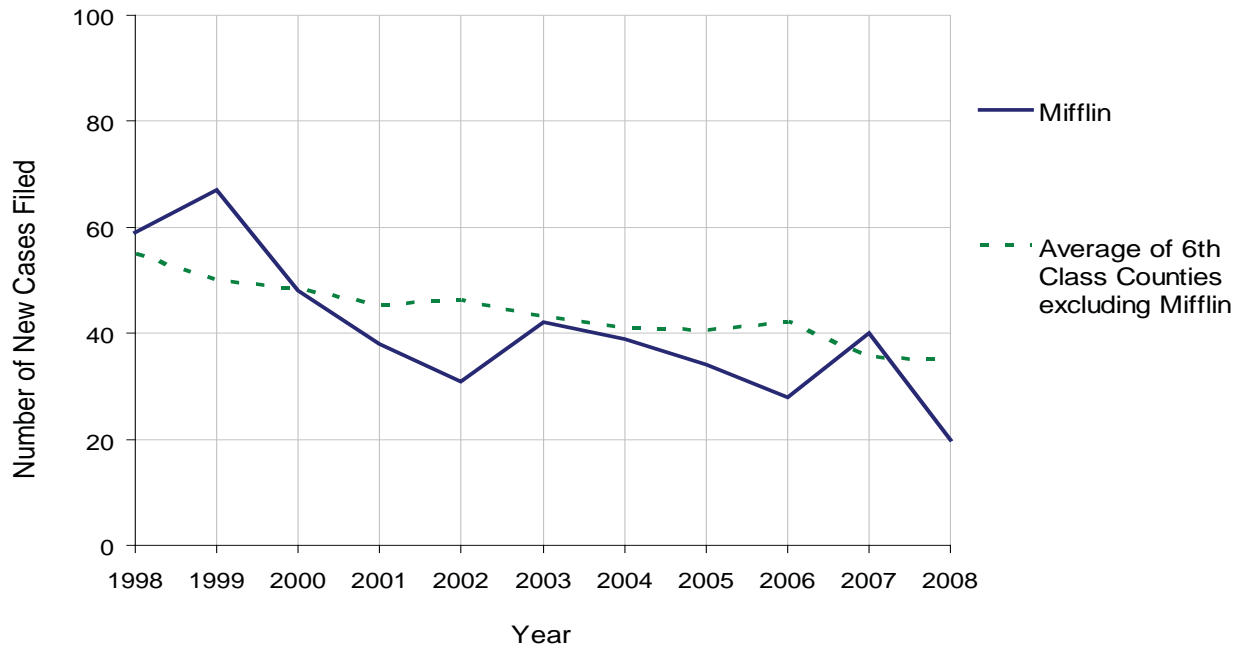
# MIFFLIN COUNTY

2008 Population Estimate: 46,062  
 Class of County: 6th  
 No. of Common Pleas Court Judgeships: 2



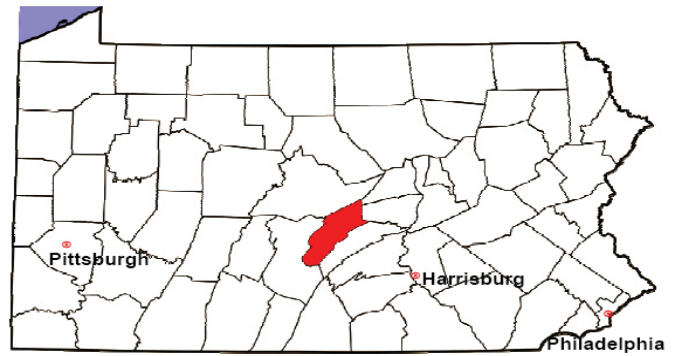
2008 Accounts	No. of Accounts	%
Cases Pending 1/1/08	8	
New Cases Filed in '08	20	
<b>Cases Available for Processing</b>	<b>28</b>	
Processed By:		
Contested before a Judge	0	0.0%
Contested before a Non-Judicial Officer	0	0.0%
Uncontested	26	100.0%
Other	0	0.0%
<b>Cases Processed</b>	<b>26</b>	<b>100.0%</b>
<b>Cases Pending 12/31/08</b>	<b>2</b>	

Accounts New Cases Filed, 1998-2008



# MIFFLIN COUNTY

2008 Population Estimate: 46,062  
 Class of County: 6th  
 No. of Common Pleas Court Judgeships: 2

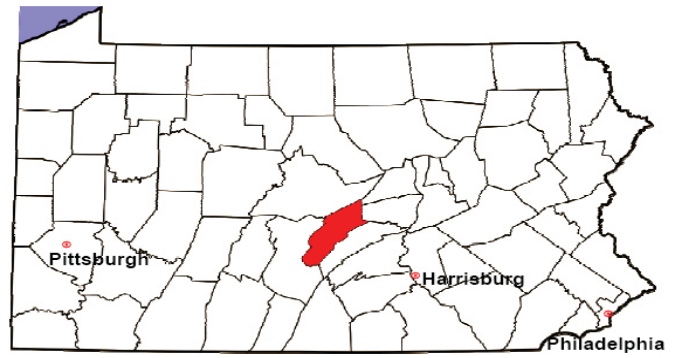


<b>2008 Adoptions</b>		No. of Cases	%
Cases Pending 1/1/08		2	
New Cases Filed in '08		18	
<b>Cases Available for Processing</b>		<b>20</b>	
Processed By:			
Contested before a Judge	Granted	4	21.1%
	Denied	0	0.0%
Uncontested	Granted	15	78.9%
	Denied	0	0.0%
Other		0	0.0%
<b>Cases Processed</b>		<b>19</b>	<b>100.0%</b>
<b>Cases Pending 12/31/08</b>		<b>1</b>	

Note: Prior to 2008, each petition was counted as one new case, regardless of the number of children listed on the petition. Starting in 2008, each child listed on a petition is counted as a separate case. Therefore, statistics for 2008 should not be compared with those for previous years.

# MIFFLIN COUNTY

2008 Population Estimate: 46,062  
 Class of County: 6th  
 No. of Common Pleas Court Judgeships: 2



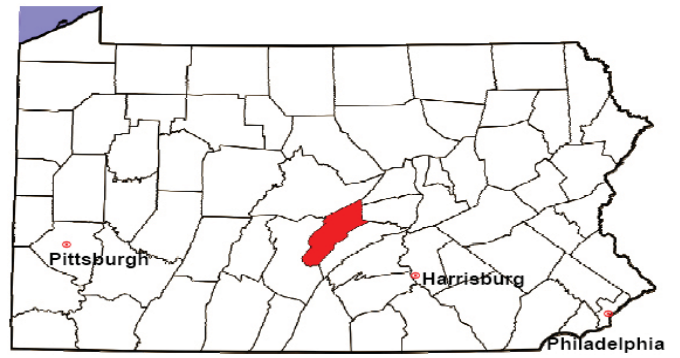
2008 Relinquishments/Terminations	No. of Petitions	%
Cases Pending 1/1/08	1	
New Cases Filed in '08	14	
<b>Cases Available for Processing</b>	<b>15</b>	
Processed By:		
Contested before a Judge	10	76.9%
Uncontested	2	15.4%
Other	1	7.7%
<b>Cases Processed</b>	<b>13</b>	<b>100.0%</b>
<b>Cases Pending 12/31/08</b>	<b>2</b>	

Relinquishments/Terminations New Cases Filed, 1998-2008



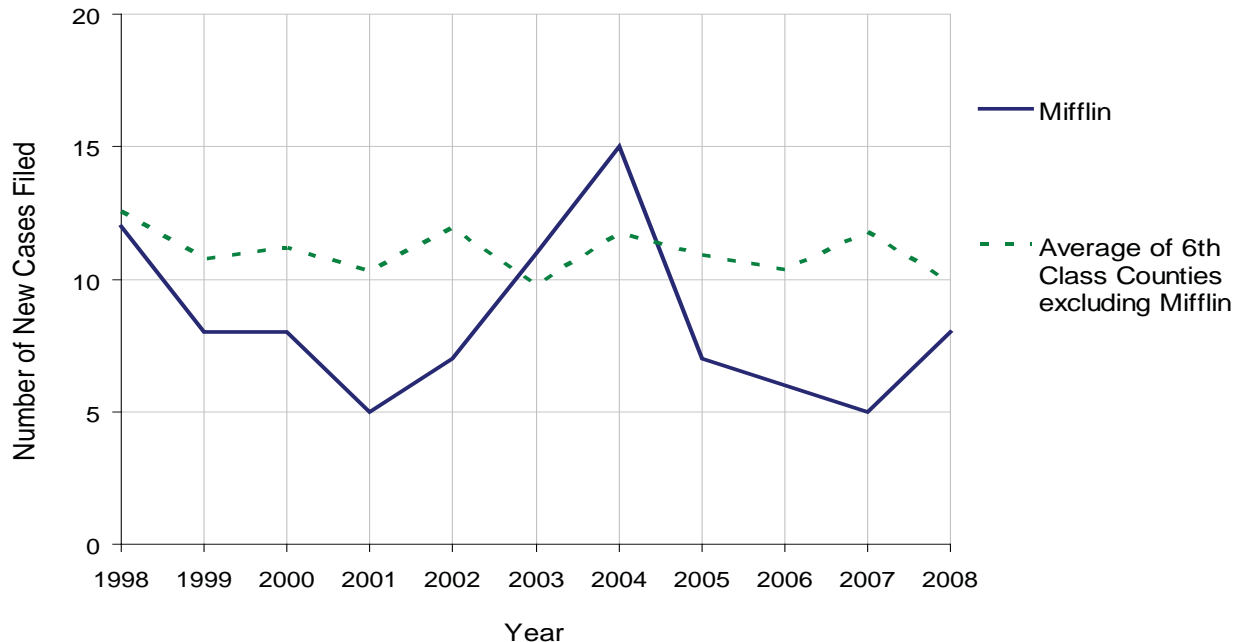
# MIFFLIN COUNTY

2008 Population Estimate: 46,062  
 Class of County: 6th  
 No. of Common Pleas Court Judgeships: 2



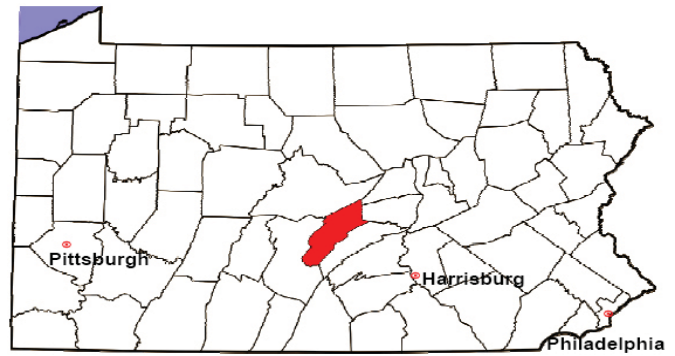
2008 Appointment of Guardians	No. of Petitions	%
Cases Pending 1/1/08	2	
New Cases Filed in '08	8	
<b>Cases Available for Processing</b>	<b>10</b>	
Processed By:		
Contested before a Judge	0	0.0%
Uncontested	7	87.5%
Other	1	12.5%
<b>Cases Processed</b>	<b>8</b>	<b>100.0%</b>
<b>Cases Pending 12/31/08</b>	<b>2</b>	

Appointment of Guardians New Cases Filed, 1998-2008



# MIFFLIN COUNTY

2008 Population Estimate: 46,062  
 Class of County: 6th  
 No. of Common Pleas Court Judgeships: 2



2008 Jury Activity & Performance Measures		
A. Juror Days	1,225	
B. Number Sent to Voir Dire	1,023	
Voir Dire Attendance Rate $(B/A * 100)$		83.5%
C. Number of Voir Dires Started	29	
Juror Days Per Voir Dire Starts $(A/C)$		42
D. Number of Jurors Selected	405	
Juror Selection Rate $(D/B * 100)$		39.6%
E. Number of Jury Trials Started	15	
Juror Days Per Trial Starts $(A/E)$		82
Number of Voir Dires Not Resulting in Trial $(C-E)$		14
Percent Voir Dires Not Resulting in Trial $(C-E)/C * 100$		48.3%
F. Pool Days	8	
G. Zero Panel Days	0	
Percent Zero Panel Days $(G/F * 100)$		0.0%
H. Total Juror Fees Incurred	\$21,774	
Average Juror Fees Per Trial $(H/E)$		\$1,452

Average Juror Fees Per Trial, 1998-2008

