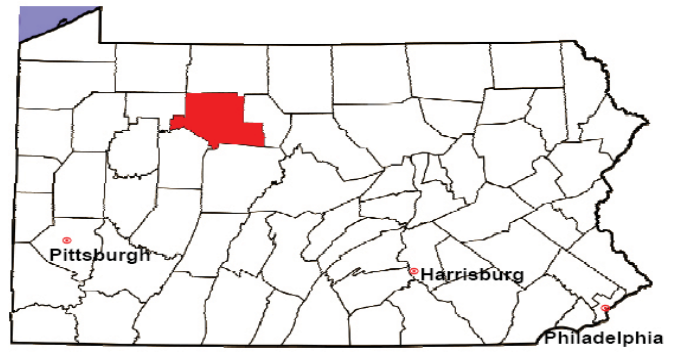


ELK COUNTY

2008 Population Estimate: 32,268

Class of County: 6th

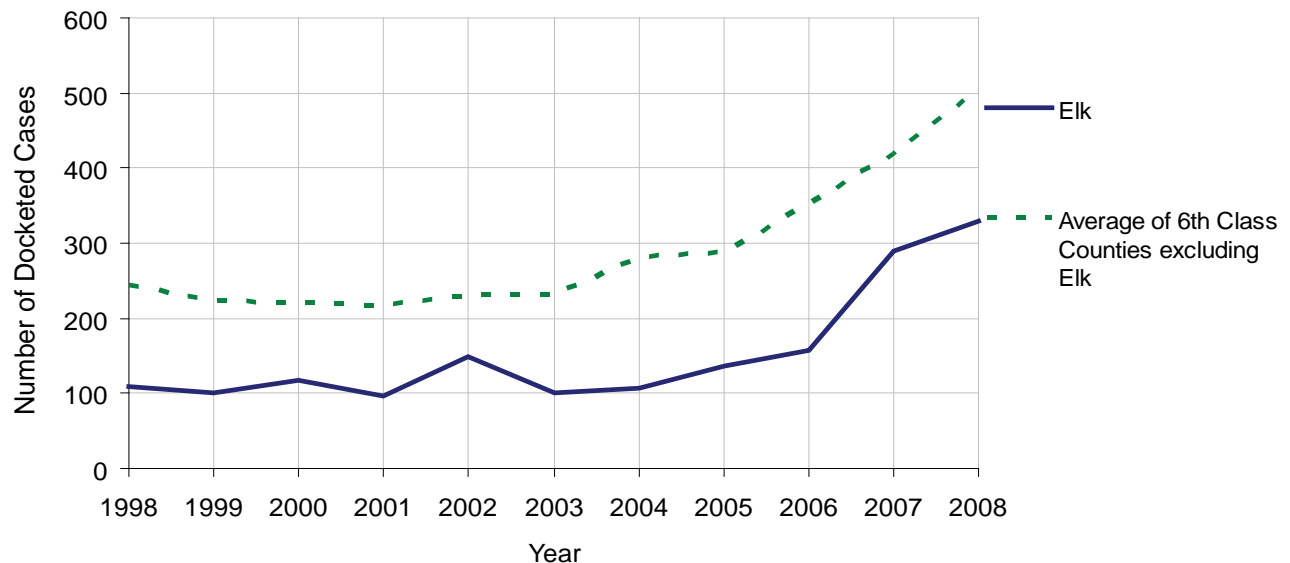
No. of Common Pleas Court Judgeships: 1
(Elk and Cameron combined)



2008 Civil		Civil Action		
Docketed Cases		329		
Arbitrated Cases		7		
Trial-Ready Cases:		Civil Action	Other	Total
Cases Pending 1/1/08		17	0	17
Became Trial Ready in '08		11	0	11
Restored to Trial List		0	0	0
Appeals from Arbitration		1	0	1
Cases Available for Trial		29	0	29
Disposed By:				
Settlement		7	0	7
Non-Jury Trial		6	0	6
Jury Trial		0	0	0
Stricken from Trial List		6	0	6
Other		0	0	0
Cases Disposed		19	0	19
Cases Pending 12/31/08		10	0	10

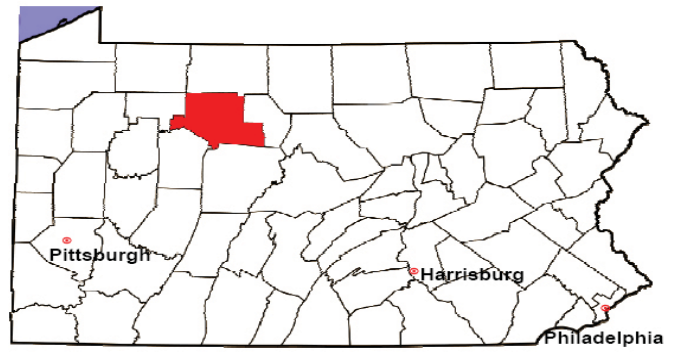
Age of Trial-Ready Cases as of 12/31/08 (Civil Action Only)		
0-6 months	7	70%
7-12 months	1	10%
13-18 months	2	20%
19-24 months	0	0%
25-30 months	0	0%
31-36 months	0	0%
Over 36 months	0	0%
Total	10	100%

Docketed Cases, 1998-2008



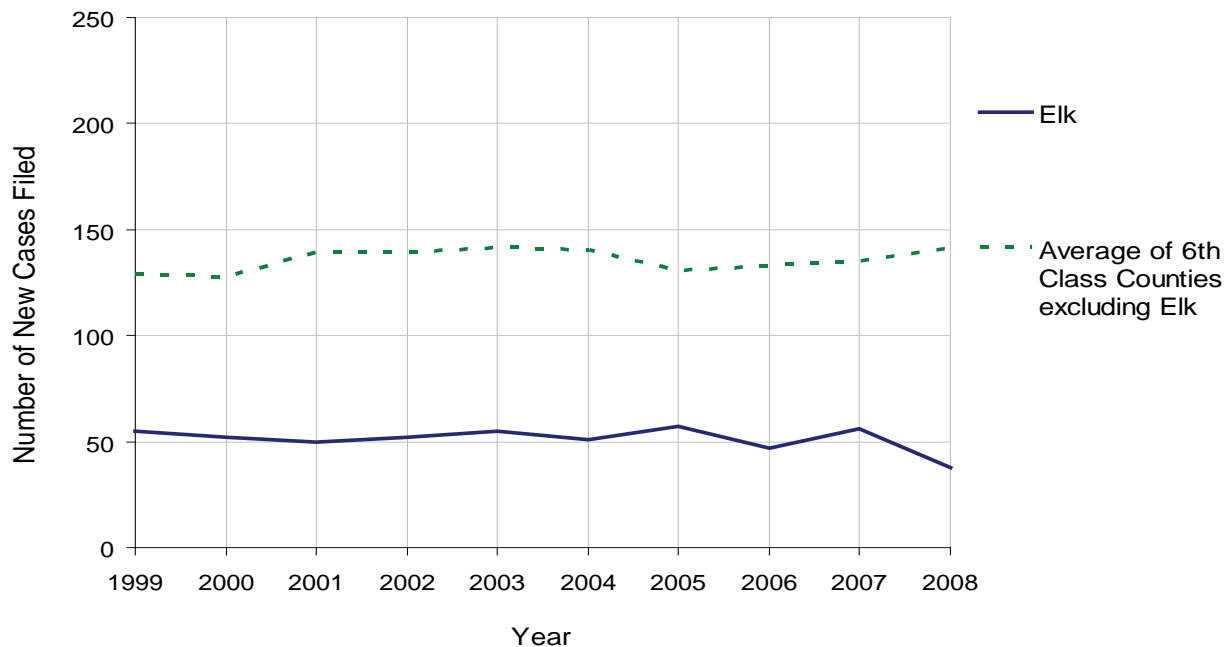
ELK COUNTY

2008 Population Estimate: 32,268
 Class of County: 6th
 No. of Common Pleas Court Judgeships: 1
 (Elk and Cameron combined)



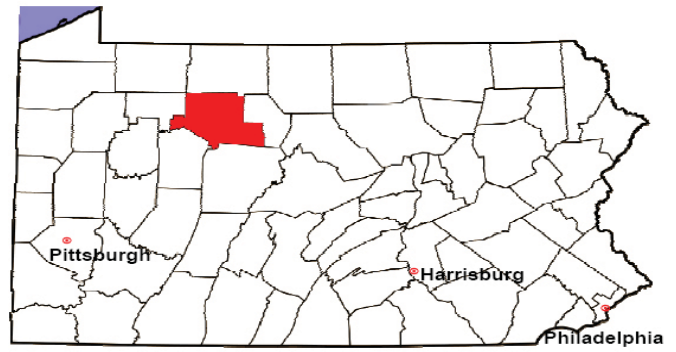
2008 Protection From Abuse	No. of Petitions	%
Cases Pending 1/1/08	6	
New Cases Filed in '08	38	
Cases Available for Processing	44	
Processed By:		
Final Order After Hearing	8	21.1%
Final Order by Stipulation or Agreement	10	26.3%
Dismissal	9	23.7%
Withdrawal	11	28.9%
Other	0	0.0%
Cases Processed	38	100.0%
Cases Pending 12/31/08	6	

PFA New Cases Filed, 1999-2008



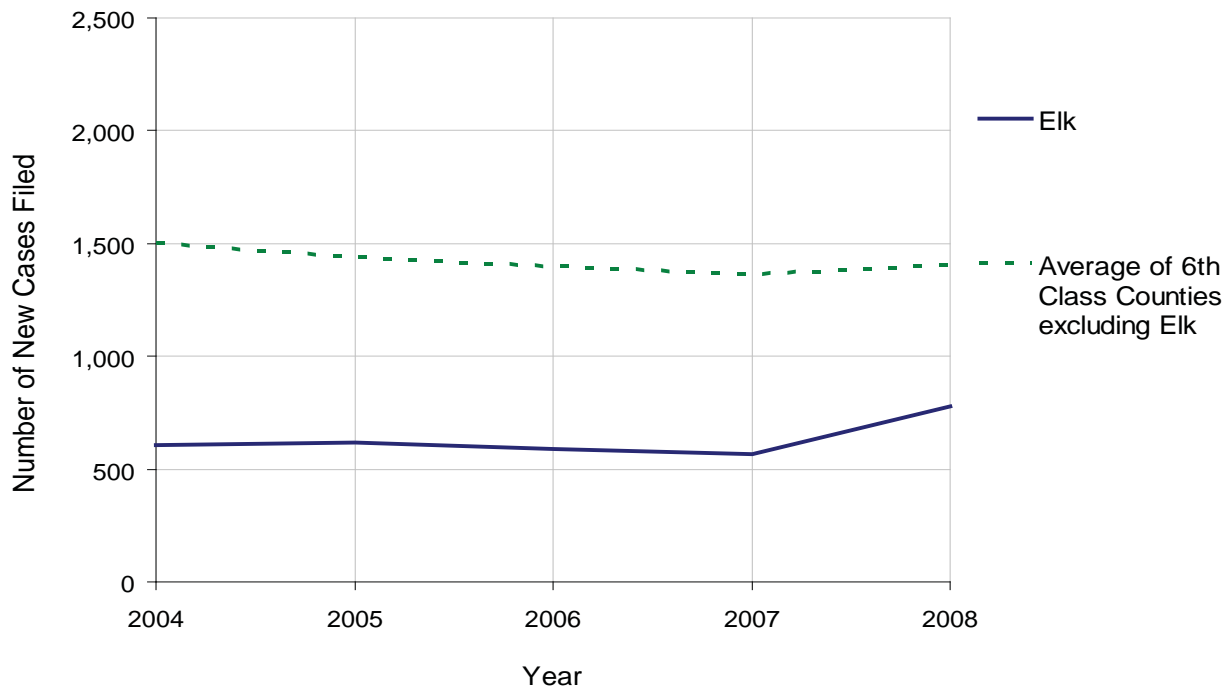
ELK COUNTY

2008 Population Estimate: 32,268
 Class of County: 6th
 No. of Common Pleas Court Judgeships: 1
 (Elk and Cameron combined)



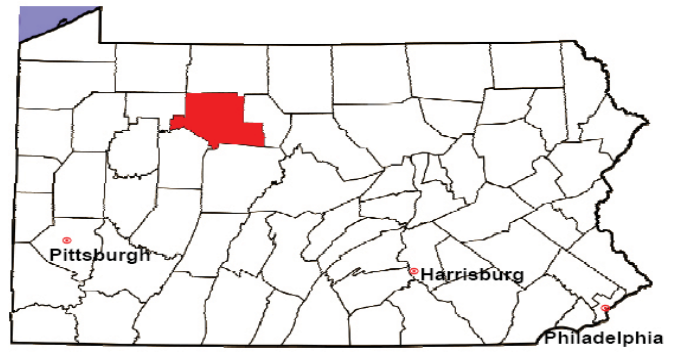
2008 Spousal & Child Support	No. of Petitions	%
Cases Pending 1/1/08	59	
New Cases Filed in '08	779	
Dockets Transferred In (+)	2	
Dockets Transferred Out (-)	5	
Cases Available for Processing	835	
Processed By:		
Judge	12	1.6%
Intake Officer	701	91.6%
Hearing Officer	51	6.7%
Other	1	0.1%
Cases Processed	765	100.0%
Cases Pending 12/31/08	70	

Spousal & Child Support New Cases Filed, 1998-2008



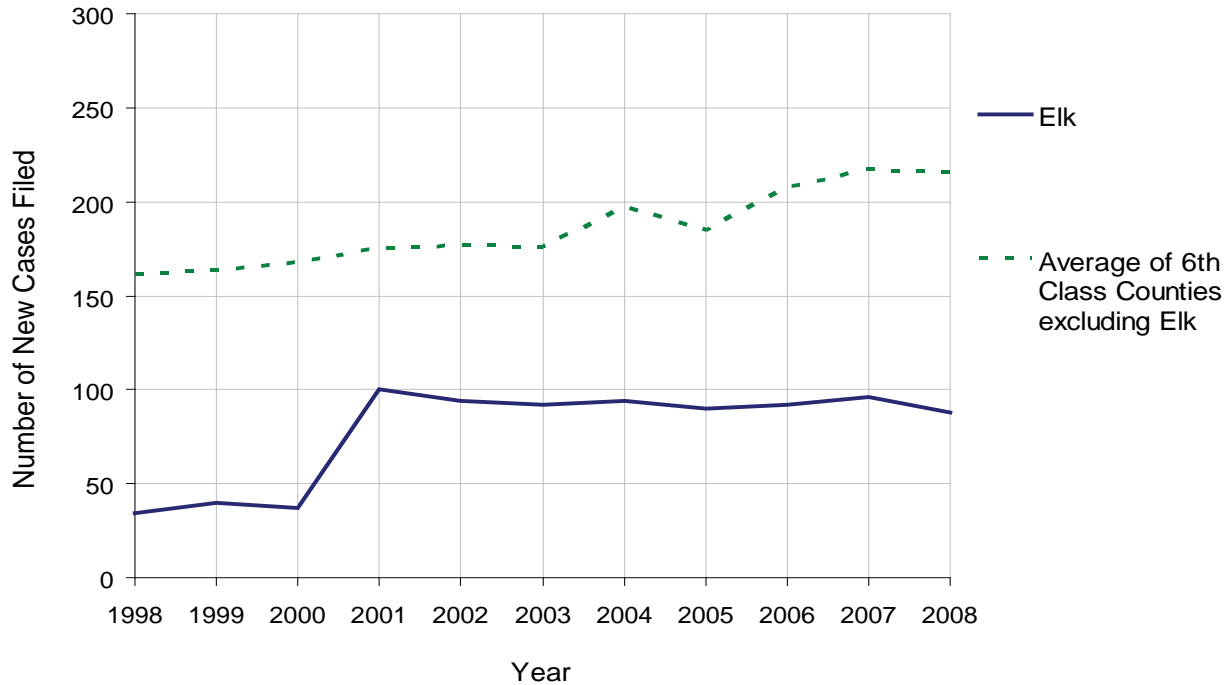
ELK COUNTY

2008 Population Estimate: 32,268
 Class of County: 6th
 No. of Common Pleas Court Judgeships: 1
 (Elk and Cameron combined)



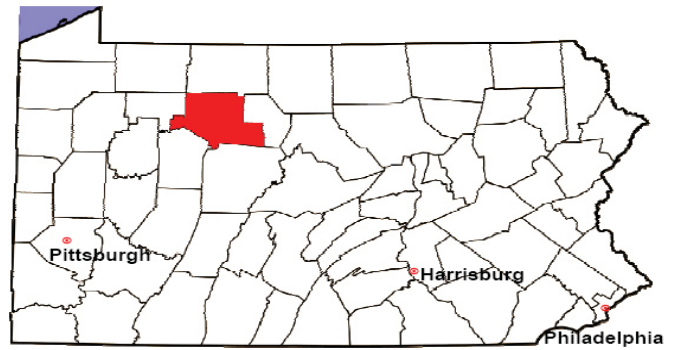
2008 Custody/Partial Custody/Visitation	No. of Petitions	%
Cases Pending 1/1/08	30	
New Cases Filed in '08	88	
Cases Available for Processing	118	
Processed By:		
Judge	8	10.1%
Non-Judicial Officer	35	44.3%
Other	36	45.6%
Cases Processed	79	100.0%
Cases Pending 12/31/08	39	

Custody/Partial Custody/Visitation New Cases Filed
 1998-2008



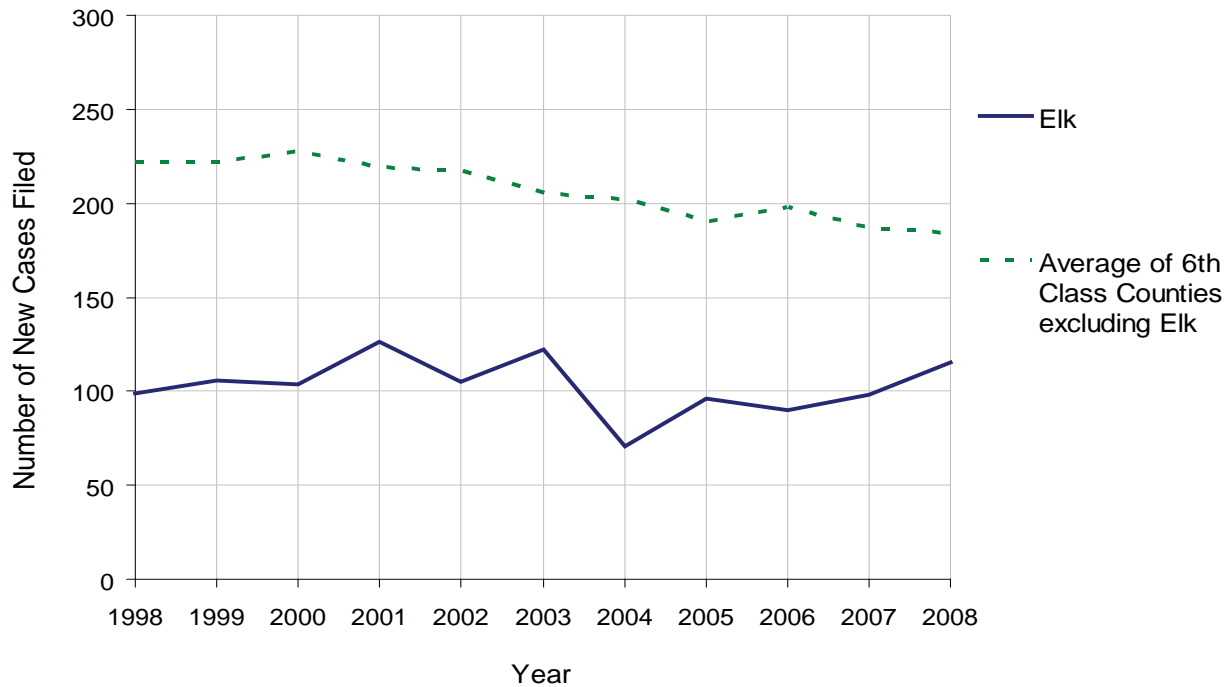
ELK COUNTY

2008 Population Estimate: 32,268
 Class of County: 6th
 No. of Common Pleas Court Judgeships: 1
 (Elk and Cameron combined)



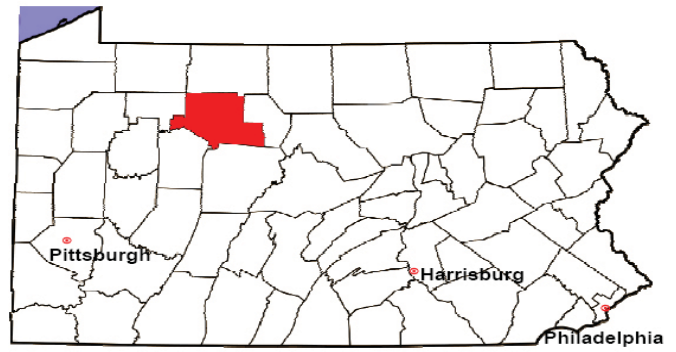
2008 Divorce	No. of Petitions	%
Cases Pending 1/1/08	148	
New Cases Filed in '08	115	
Cases Available for Processing	263	
Processed By:		
Contested Before a Judge	0	0.0%
Contested Before a Master	0	0.0%
Uncontested	101	88.6%
Other	13	11.4%
Cases Processed	114	100.0%
Cases Pending 12/31/08	149	

Divorce New Cases Filed, 1998-2008



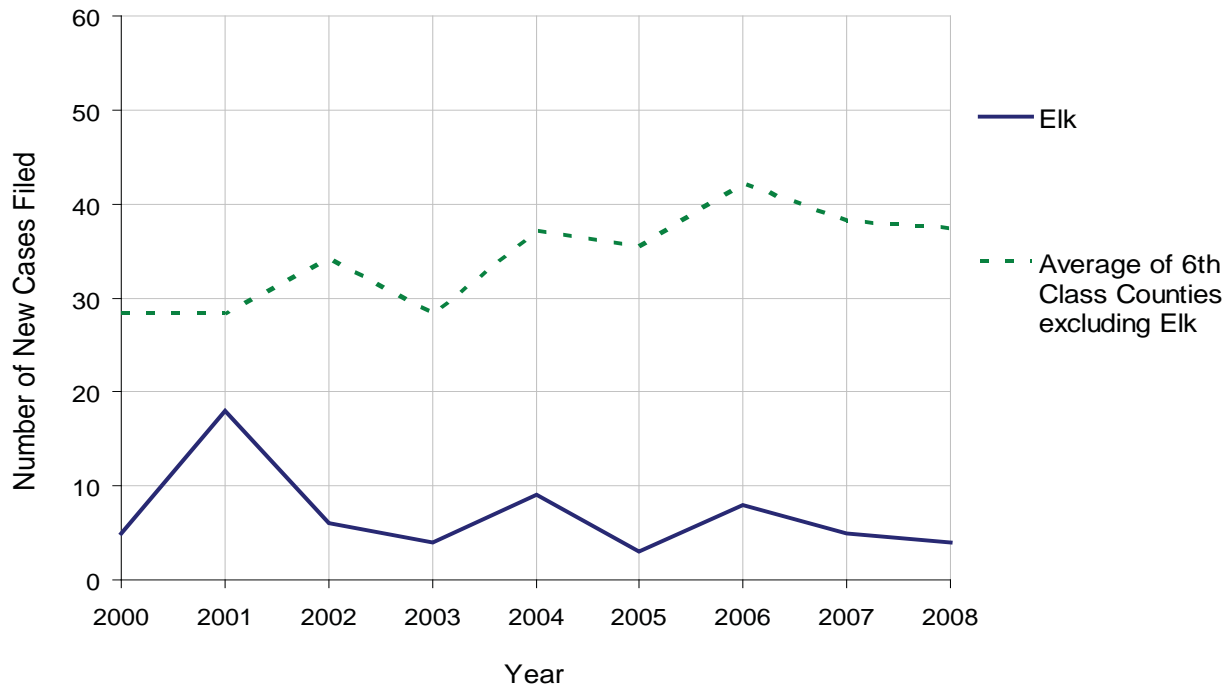
ELK COUNTY

2008 Population Estimate: 32,268
 Class of County: 6th
 No. of Common Pleas Court Judgeships: 1
 (Elk and Cameron combined)



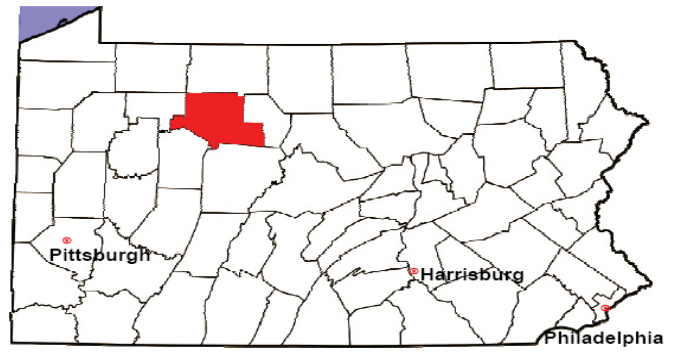
2008 Juvenile Dependency Abuse/Neglect	No. of Petitions	%
Cases Pending 1/1/08	0	
New Cases Filed in '08	4	
Cases Available for Processing	4	
Processed By:		
Judge	4	100.0%
Non-Judicial Officer	0	0.0%
Other	0	0.0%
Cases Processed	4	100.0%
Cases Pending 12/31/08	0	

Abuse/Neglect New Cases Filed, 2000-2008



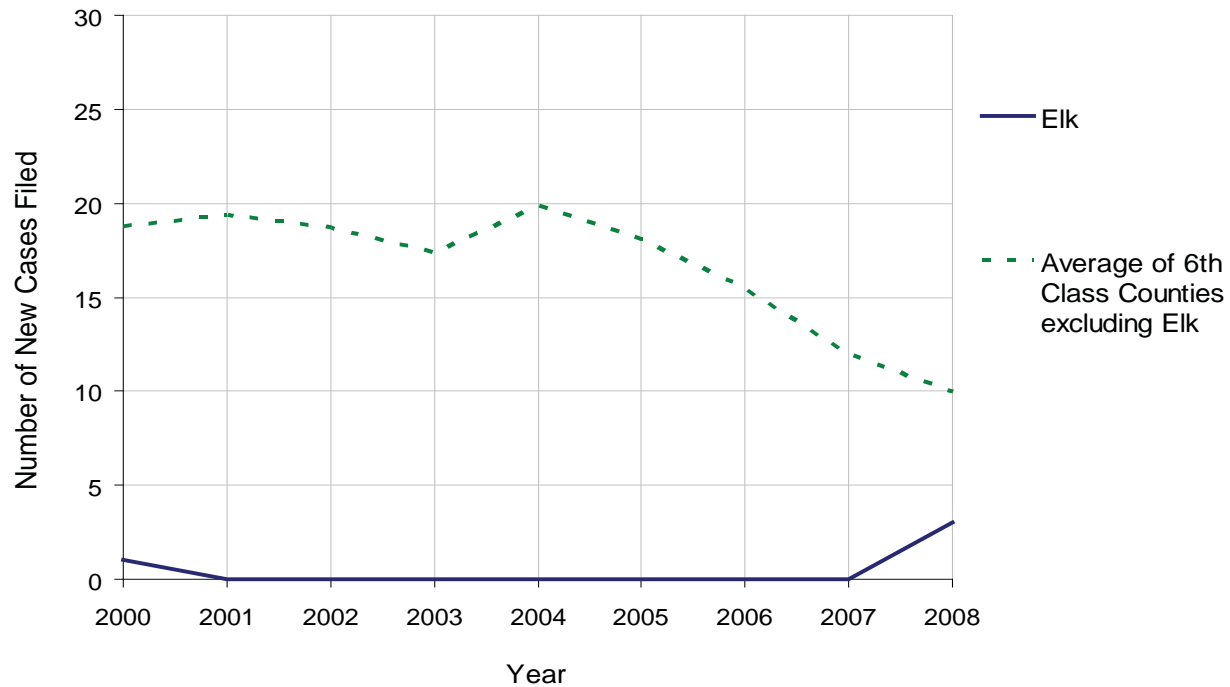
ELK COUNTY

2008 Population Estimate: 32,268
 Class of County: 6th
 No. of Common Pleas Court Judgeships: 1
 (Elk and Cameron combined)



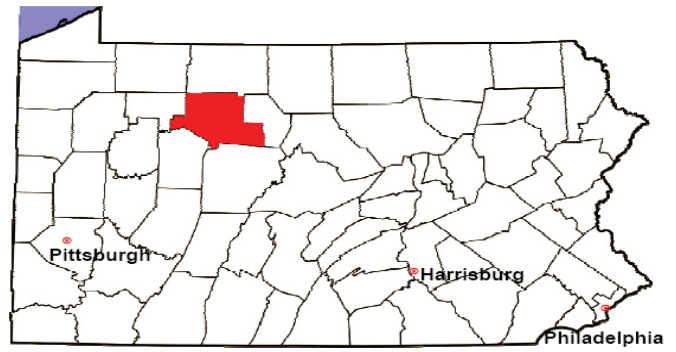
2008 Juvenile Dependency Status Offenses	No. of Petitions	%
Cases Pending 1/1/08	0	
New Cases Filed in '08	3	
Cases Available for Processing	3	
Processed By:		
Judge	2	66.7%
Non-Judicial Officer	0	0.0%
Other	1	33.3%
Cases Processed	3	100.0%
Cases Pending 12/31/08	0	

Status Offenses New Cases Filed, 2000-2008



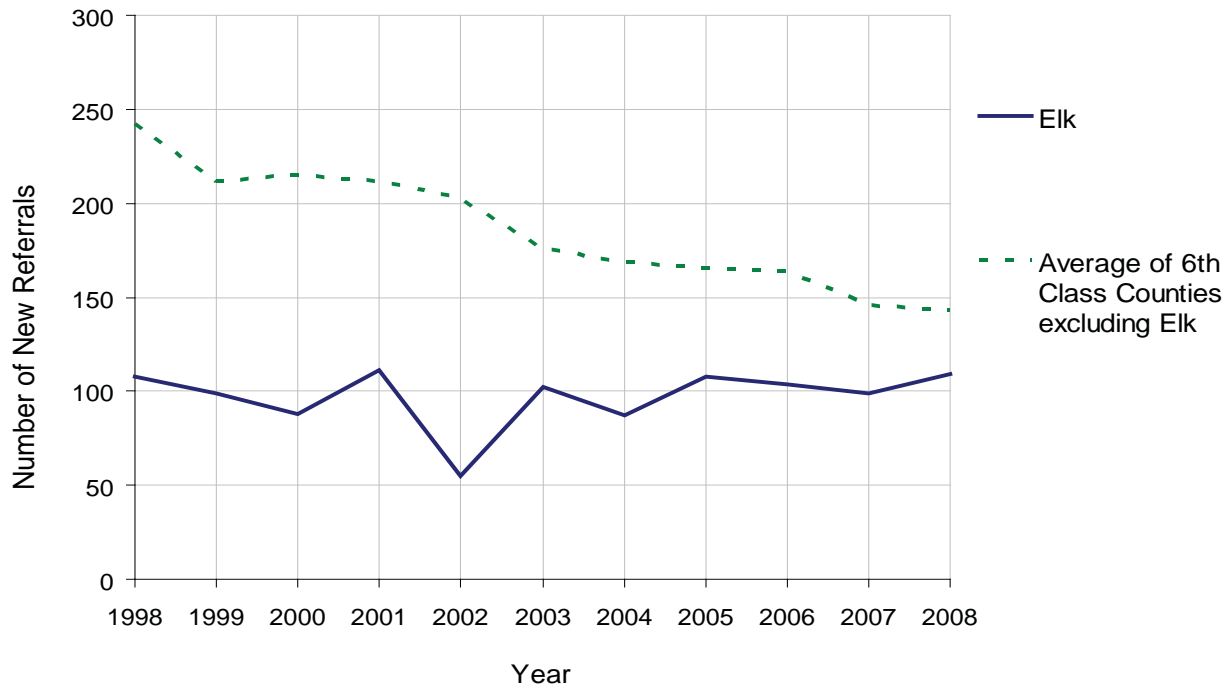
ELK COUNTY

2008 Population Estimate: 32,268
 Class of County: 6th
 No. of Common Pleas Court Judgeships: 1
 (Elk and Cameron combined)



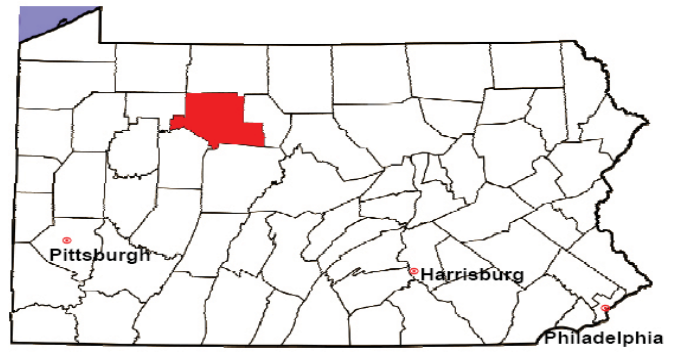
2008 Juvenile Delinquency	No. of Referrals	%
Cases Pending 1/1/08	11	
New Referrals in '08	109	
Cases Available for Processing	120	
Processed By:		
Judge	34	30.9%
Non-Judicial Officer	71	64.5%
Other	5	4.5%
Cases Processed	110	100.0%
Cases Pending 12/31/08	10	

Juvenile Delinquency New Referrals, 1998-2008



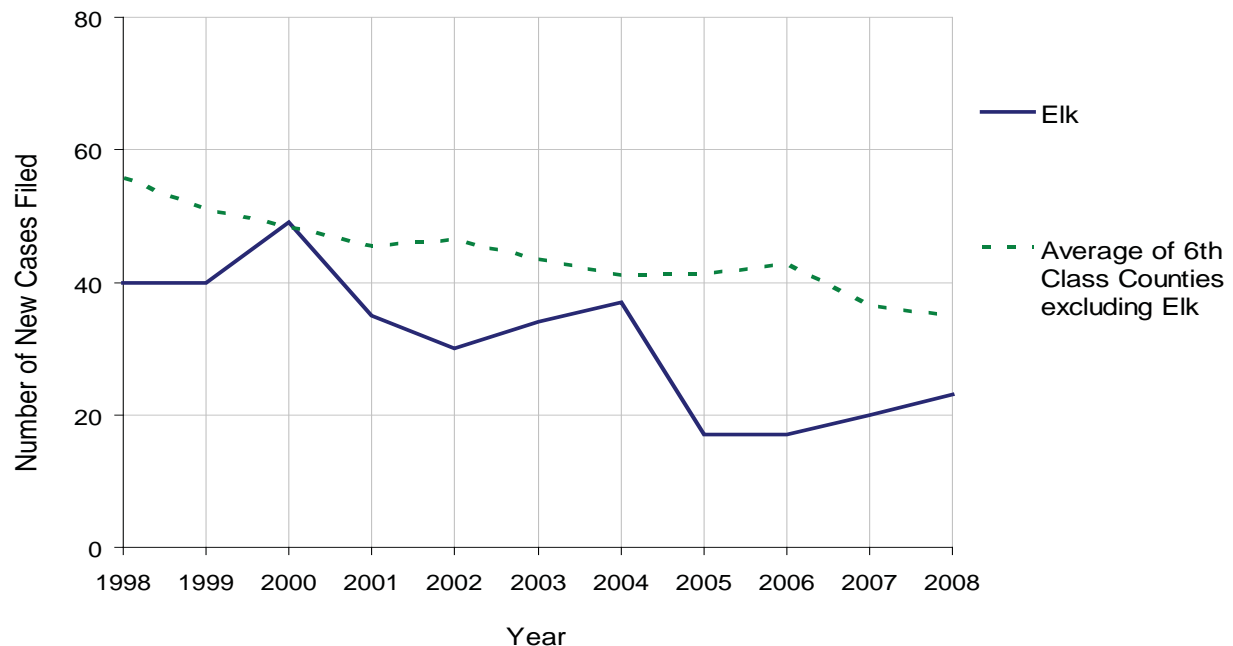
ELK COUNTY

2008 Population Estimate: 32,268
 Class of County: 6th
 No. of Common Pleas Court Judgeships: 1
 (Elk and Cameron combined)



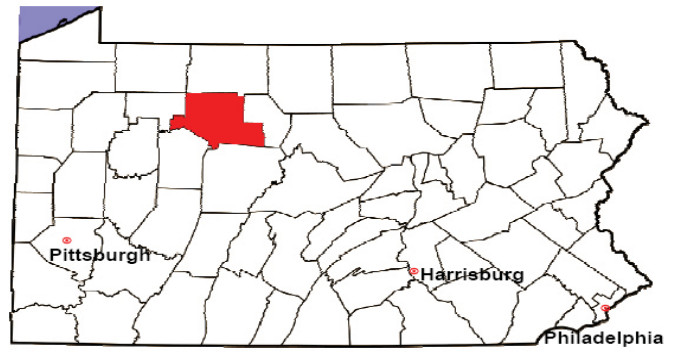
2008 Accounts	No. of Accounts	%
Cases Pending 1/1/08	11	
New Cases Filed in '08	23	
Cases Available for Processing	34	
Processed By:		
Contested before a Judge	0	0.0%
Contested before a Non-Judicial Officer	0	0.0%
Uncontested	21	100.0%
Other	0	0.0%
Cases Processed	21	100.0%
Cases Pending 12/31/08	13	

Accounts New Cases Filed, 1998-2008



ELK COUNTY

2008 Population Estimate: 32,268
 Class of County: 6th
 No. of Common Pleas Court Judgeships: 1
 (Elk and Cameron combined)

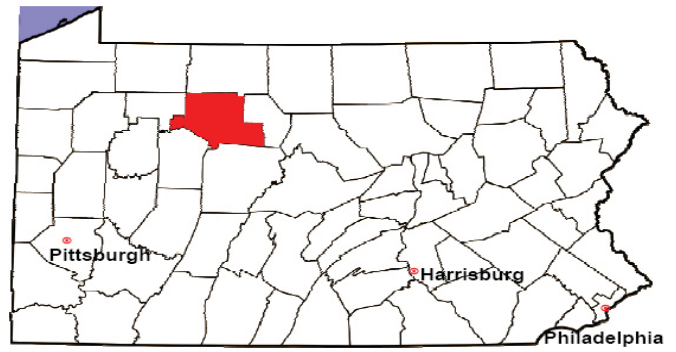


2008 Adoptions		No. of Cases	%
Cases Pending 1/1/08		0	
New Cases Filed in '08		10	
Cases Available for Processing		10	
Processed By:			
Contested before a Judge	Granted	0	0.0%
	Denied	0	0.0%
Uncontested	Granted	9	100.0%
	Denied	0	0.0%
Other		0	0.0%
Cases Processed		9	100.0%
Cases Pending 12/31/08		1	

Note: Prior to 2008, each petition was counted as one new case, regardless of the number of children listed on the petition. Starting in 2008, each child listed on a petition is counted as a separate case. Therefore, statistics for 2008 should not be compared with those for previous years.

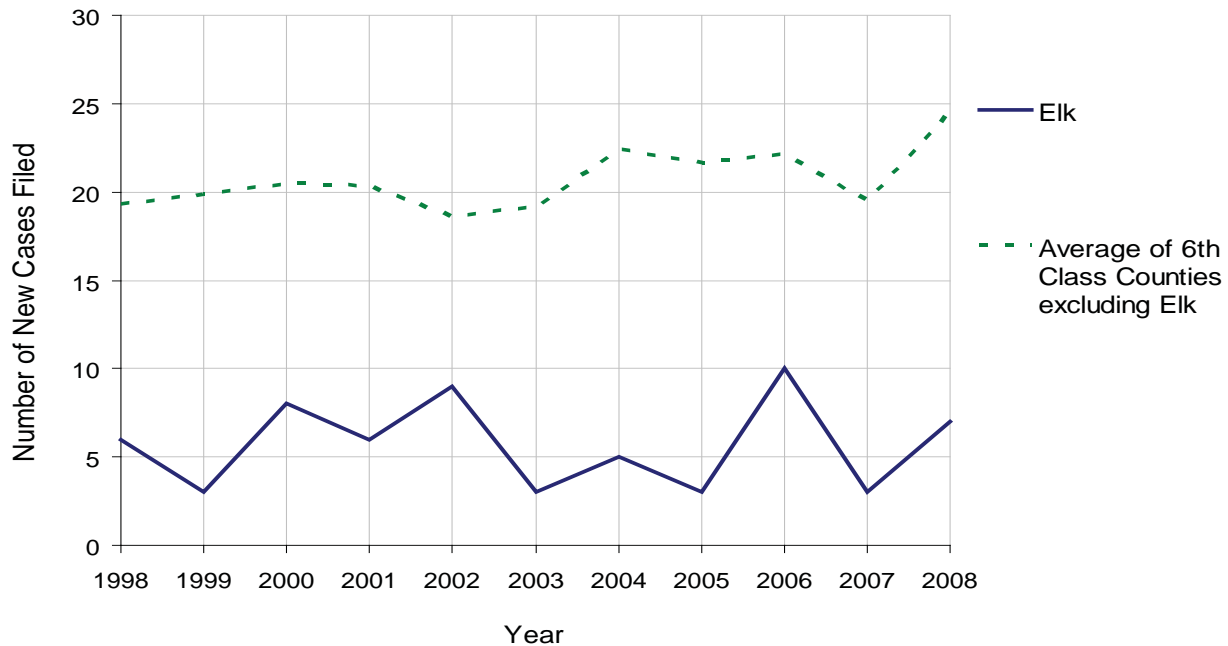
ELK COUNTY

2008 Population Estimate: 32,268
 Class of County: 6th
 No. of Common Pleas Court Judgeships: 1
 (Elk and Cameron combined)



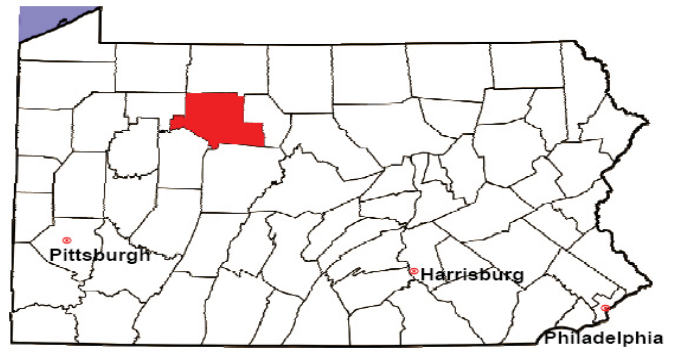
2008 Relinquishments/Terminations	No. of Petitions	%
Cases Pending 1/1/08	3	
New Cases Filed in '08	7	
Cases Available for Processing	10	
Processed By:		
Contested before a Judge	0	0.0%
Uncontested	6	100.0%
Other	0	0.0%
Cases Processed	6	100.0%
Cases Pending 12/31/08	4	

Relinquishments/Terminations New Cases Filed, 1998-2008



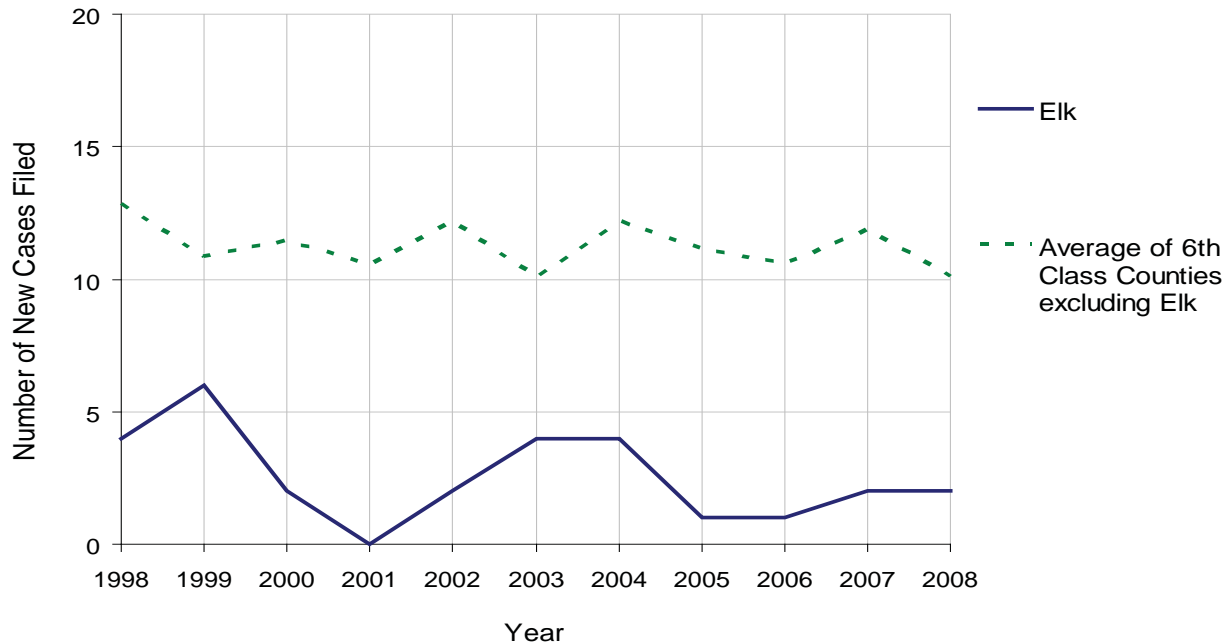
ELK COUNTY

2008 Population Estimate: 32,268
 Class of County: 6th
 No. of Common Pleas Court Judgeships: 1
 (Elk and Cameron combined)



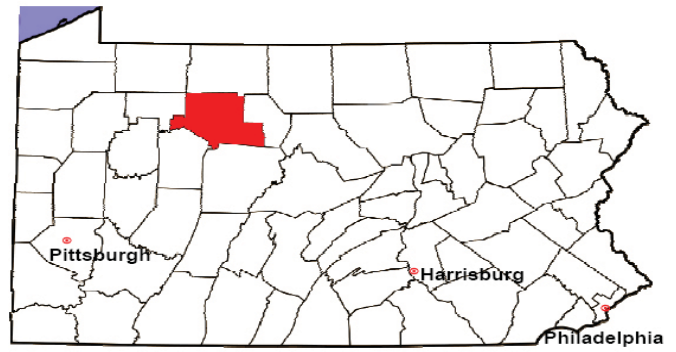
2008 Appointment of Guardians	No. of Petitions	%
Cases Pending 1/1/08	1	
New Cases Filed in '08	2	
Cases Available for Processing	3	
Processed By:		
Contested before a Judge	0	0.0%
Uncontested	2	66.7%
Other	1	33.3%
Cases Processed	3	100.0%
Cases Pending 12/31/08	0	

Appointment of Guardians New Cases Filed, 1998-2008



ELK COUNTY

2008 Population Estimate: 32,268
 Class of County: 6th
 No. of Common Pleas Court Judgeships: 1
 (Elk and Cameron combined)



2008 Jury Activity & Performance Measures		
A. Juror Days		303
B. Number Sent to Voir Dire		166
	Voir Dire Attendance Rate $(B/A * 100)$	54.8%
C. Number of Voir Dires Started		7
	Juror Days Per Voir Dire Starts (A/C)	43
D. Number of Jurors Selected		98
	Juror Selection Rate $(D/B * 100)$	59.0%
E. Number of Jury Trials Started		4
	Juror Days Per Trial Starts (A/E)	76
	Number of Voir Dires Not Resulting in Trial $(C-E)$	3
	Percent Voir Dires Not Resulting in Trial $(C-E)/C * 100$	42.9%
F. Pool Days		1
G. Zero Panel Days		0
	Percent Zero Panel Days $(G/F * 100)$	0.0%
H. Total Juror Fees Incurred		\$4,389
	Average Juror Fees Per Trial (H/E)	\$1,097

Average Juror Fees Per Trial, 1998-2008

