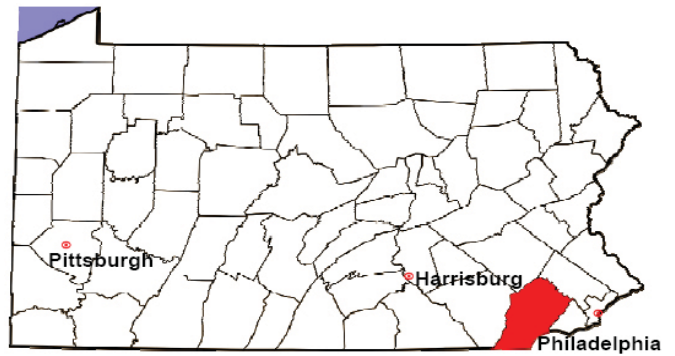


CHESTER COUNTY

2008 Population Estimate: 491,489

Class of County: 3rd

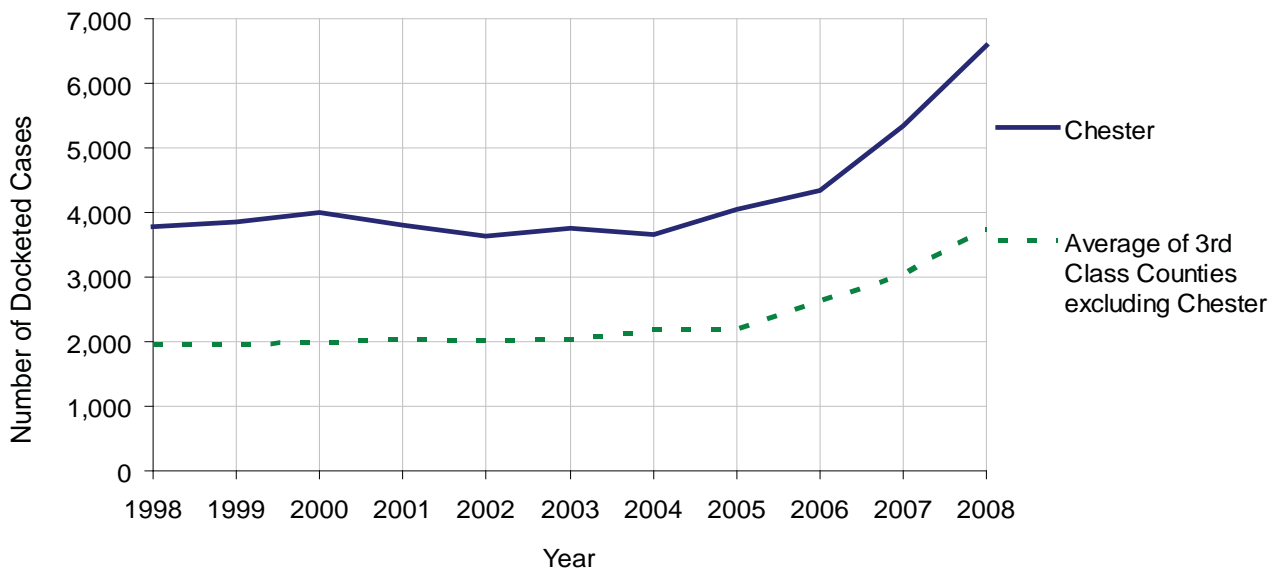
No. of Common Pleas Court Judgeships: 14



2008 Civil		Civil Action		
Docketed Cases		6,585		
Arbitrated Cases		441		
Trial-Ready Cases:		Civil Action	Other	Total
Cases Pending 1/1/08		269	119	388
Became Trial Ready in '08		532	84	616
Restored to Trial List		766	360	1,126
Appeals from Arbitration		112	0	112
Cases Available for Trial		1,679	563	2,242
Disposed By:				
Settlement		480	64	544
Non-Jury Trial		54	1	55
Jury Trial		32	0	32
Stricken from Trial List		456	339	795
Other		274	64	338
Cases Disposed		1,296	468	1,764
Cases Pending 12/31/08		383	95	478

Age of Trial-Ready Cases as of 12/31/08 (Civil Action Only)		
0-6 months	230	60%
7-12 months	54	14%
13-18 months	34	9%
19-24 months	15	4%
25-30 months	11	3%
31-36 months	15	4%
Over 36 months	24	6%
Total	383	100%

Docketed Cases, 1998-2008

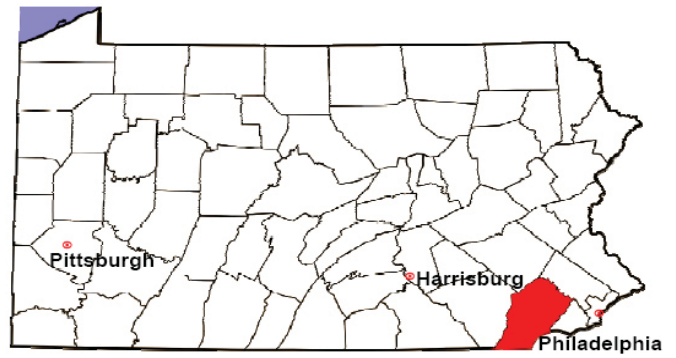


CHESTER COUNTY

2008 Population Estimate: 491,489

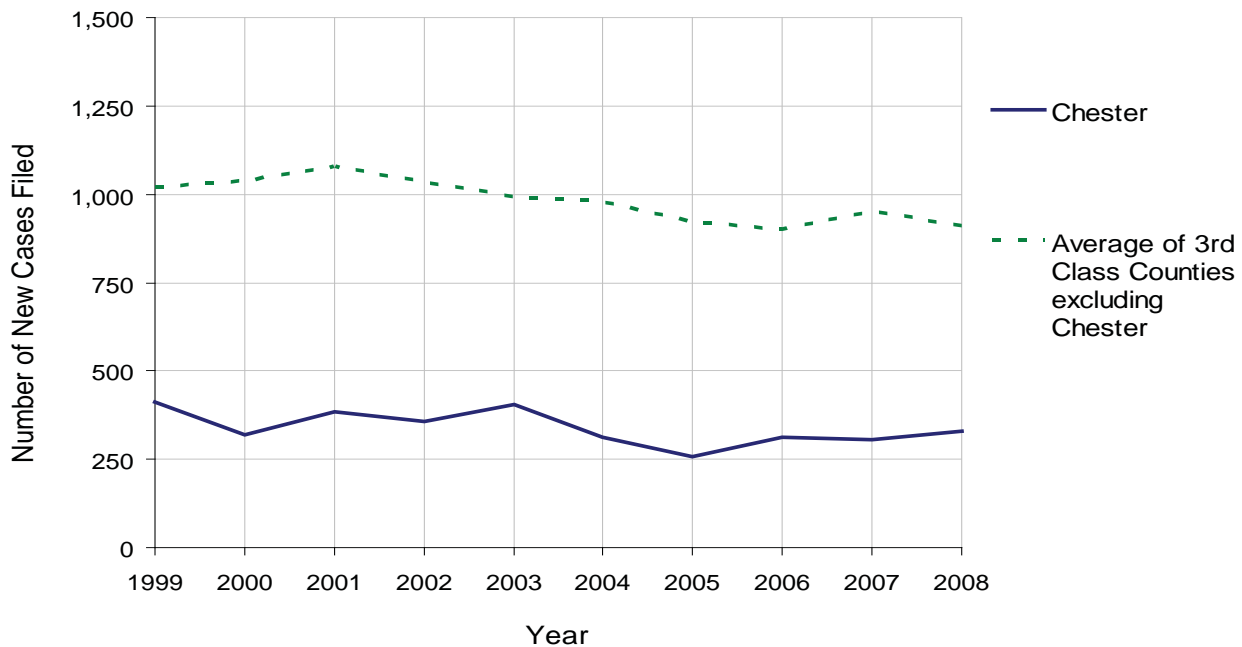
Class of County: 3rd

No. of Common Pleas Court Judgeships: 14



2008 Protection From Abuse	No. of Petitions	%
Cases Pending 1/1/08	113	
New Cases Filed in '08	329	
Cases Available for Processing	442	
Processed By:		
Final Order After Hearing	139	36.0%
Final Order by Stipulation or Agreement	77	19.9%
Dismissal	32	8.3%
Withdrawal	82	21.2%
Other	56	14.5%
Cases Processed	386	100.0%
Cases Pending 12/31/08	56	

PFA New Cases Filed, 1999-2008

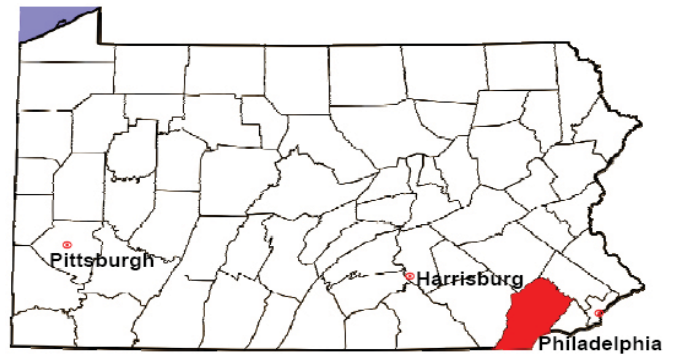


CHESTER COUNTY

2008 Population Estimate: 491,489

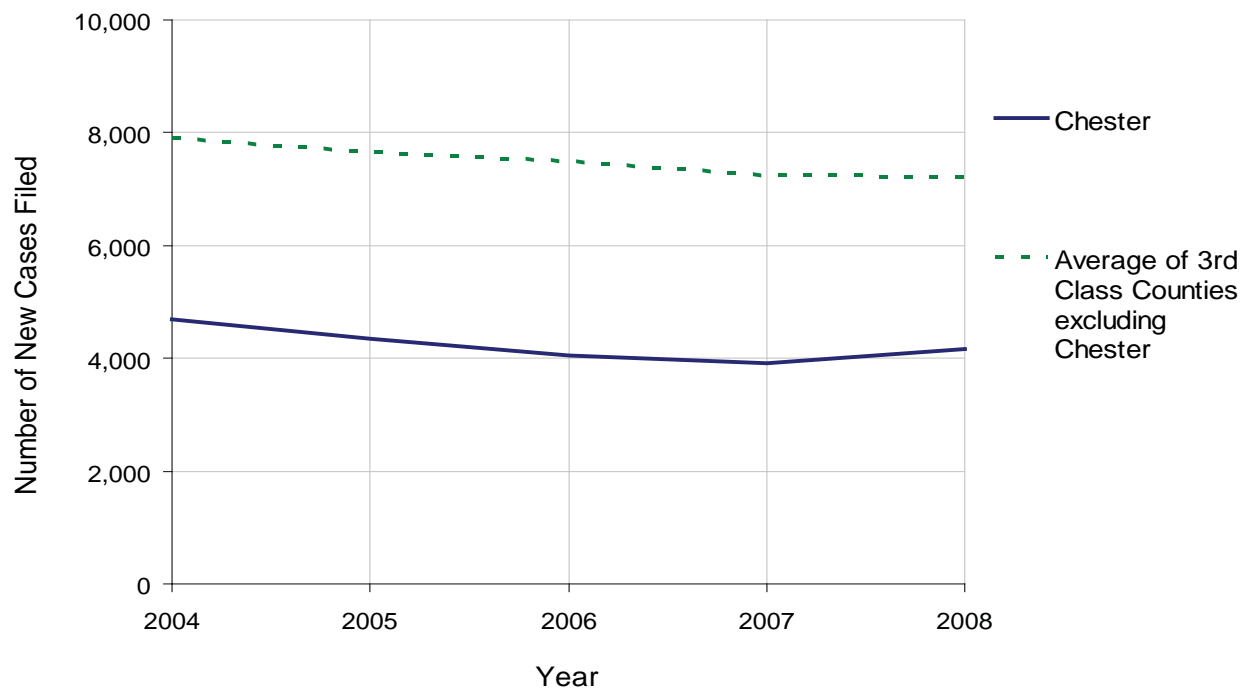
Class of County: 3rd

No. of Common Pleas Court Judgeships: 14



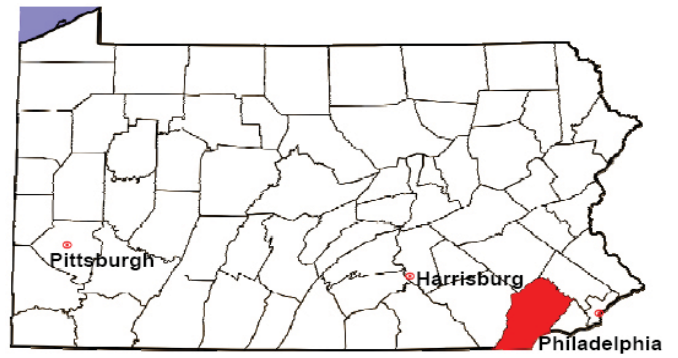
2008 Spousal & Child Support	No. of Petitions	%
Cases Pending 1/1/08	1,545	
New Cases Filed in '08	4,174	
Dockets Transferred In (+)	98	
Dockets Transferred Out (-)	148	
Cases Available for Processing	5,669	
Processed By:		
Judge	116	2.8%
Intake Officer	3,306	79.1%
Hearing Officer	755	18.1%
Other	0	0.0%
Cases Processed	4,177	100.0%
Cases Pending 12/31/08	1,492	

Spousal & Child Support New Cases Filed, 1998-2008



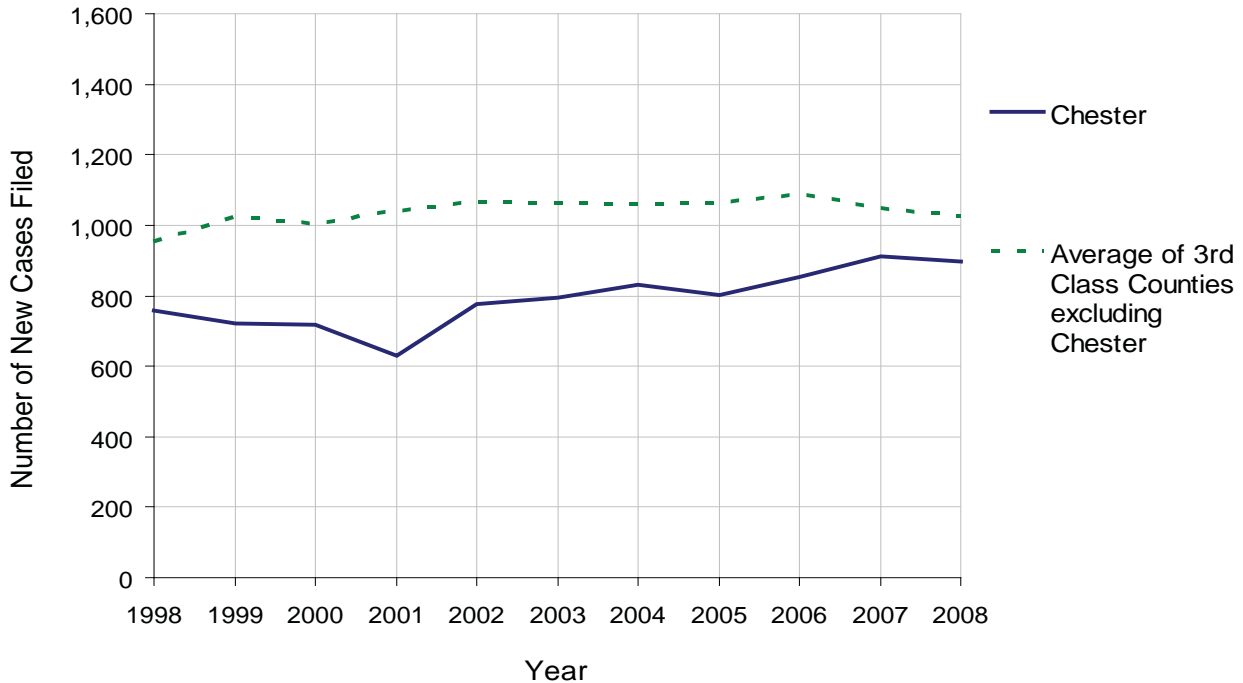
CHESTER COUNTY

2008 Population Estimate: 491,489
 Class of County: 3rd
 No. of Common Pleas Court Judgeships: 14



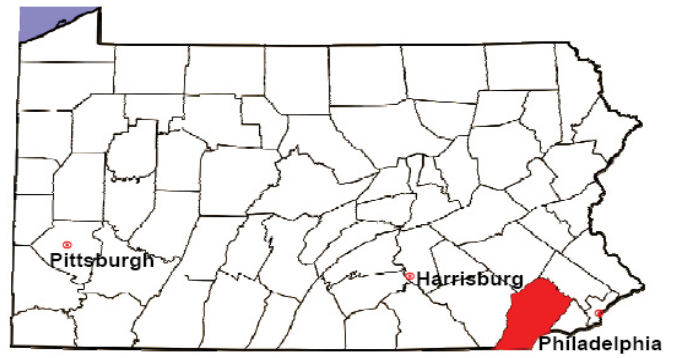
2008 Custody/Partial Custody/Visitation	No. of Petitions	%
Cases Pending 1/1/08	1,103	
New Cases Filed in '08	898	
Cases Available for Processing	2,001	
Processed By:		
Judge	48	7.0%
Non-Judicial Officer	390	57.2%
Other	244	35.8%
Cases Processed	682	100.0%
Cases Pending 12/31/08	1,319	

Custody/Partial Custody/Visitation New Cases Filed
 1998-2008



CHESTER COUNTY

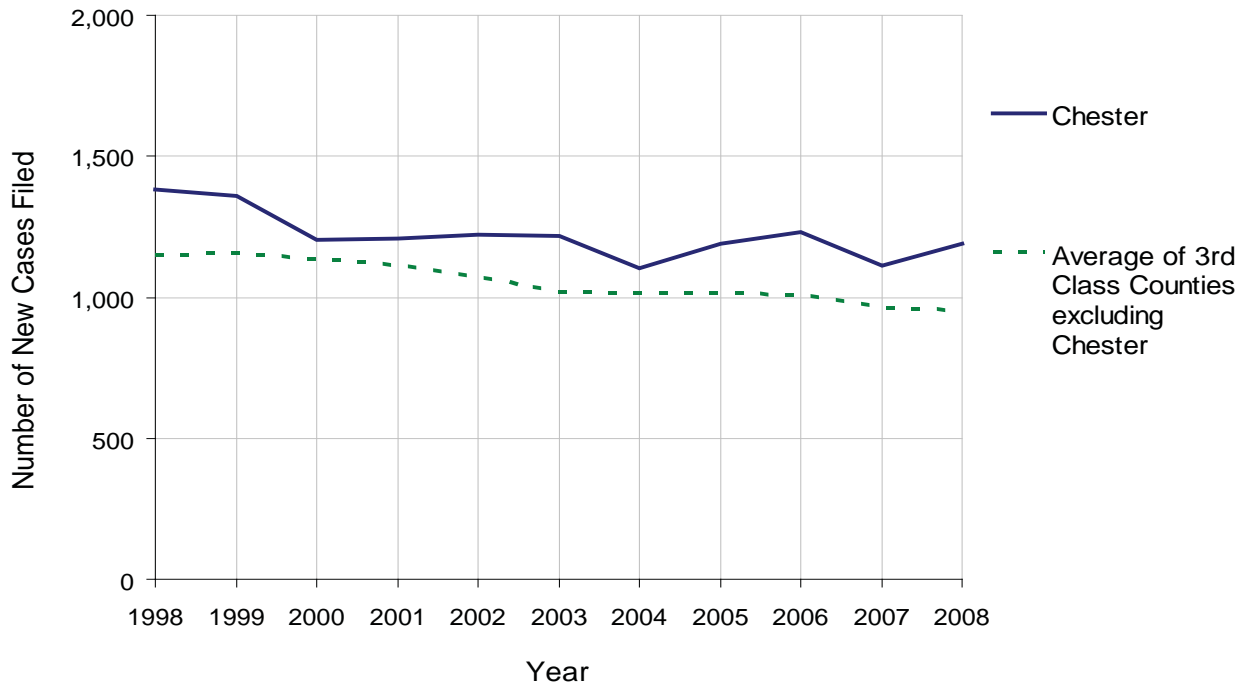
2008 Population Estimate: 491,489
 Class of County: 3rd
 No. of Common Pleas Court Judgeships: 14



2008 Divorce	No. of Petitions	%
Cases Pending 1/1/08	1,400*	
New Cases Filed in '08	1,189	
Cases Available for Processing	2,589	
Processed By:		
Contested Before a Judge	64	6.6%
Contested Before a Master	176	18.2%
Uncontested	723	74.8%
Other	3	0.3%
Cases Processed	966	100.0%
Cases Pending 12/31/08	1,623	

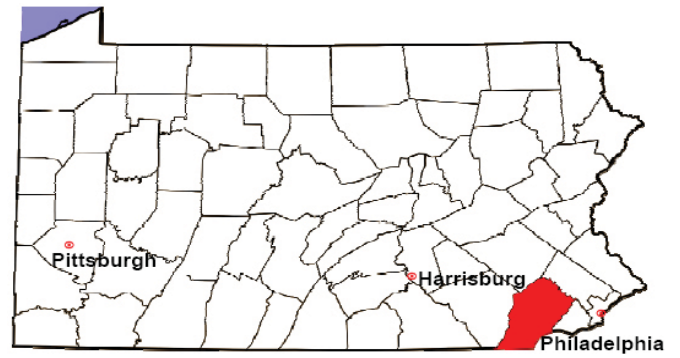
* Pending inventory is inflated due to a large number of cases awaiting finalization of equitable distribution.

Divorce New Cases Filed, 1998-2008



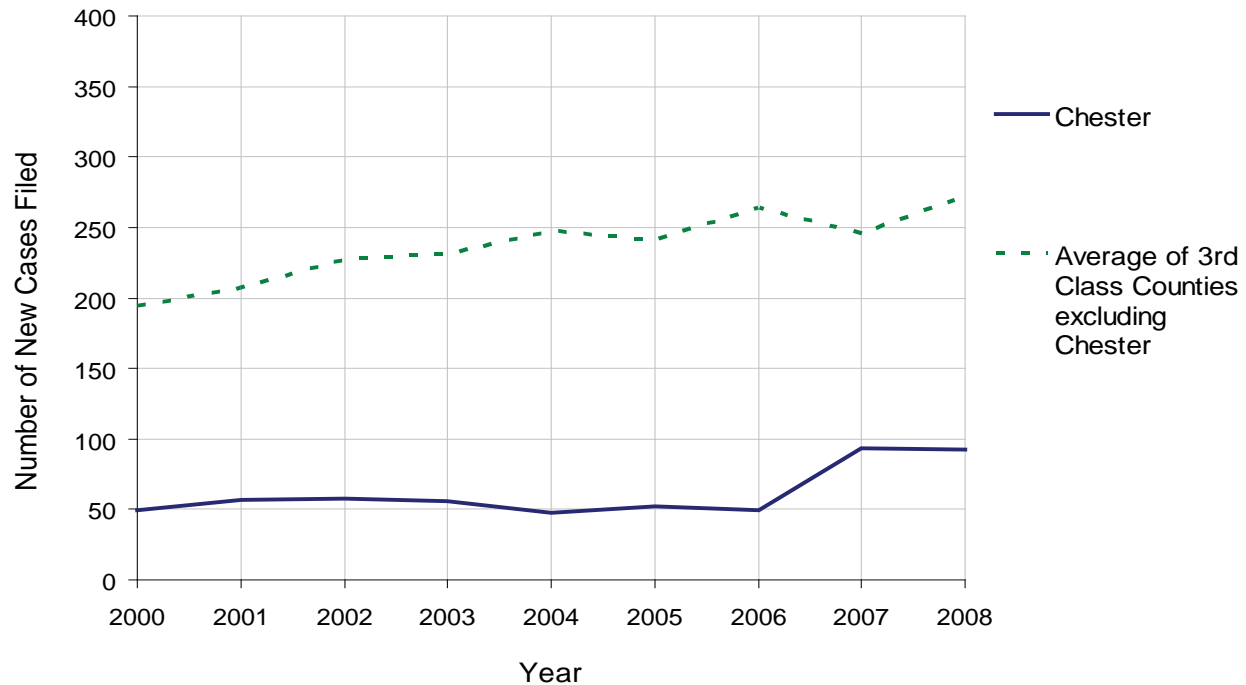
CHESTER COUNTY

2008 Population Estimate: 491,489
 Class of County: 3rd
 No. of Common Pleas Court Judgeships: 14



2008 Juvenile Dependency Abuse/Neglect	No. of Petitions	%
Cases Pending 1/1/08	5	
New Cases Filed in '08	92	
Cases Available for Processing	97	
Processed By:		
Judge	4	4.3%
Non-Judicial Officer	83	88.3%
Other	7	7.4%
Cases Processed	94	100.0%
Cases Pending 12/31/08	3	

Abuse/Neglect New Cases Filed, 2000-2008

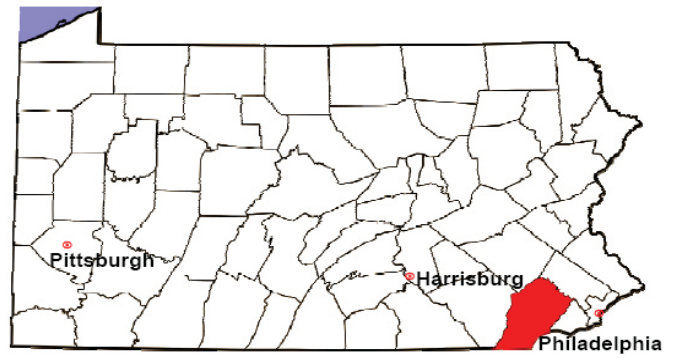


CHESTER COUNTY

2008 Population Estimate: 491,489

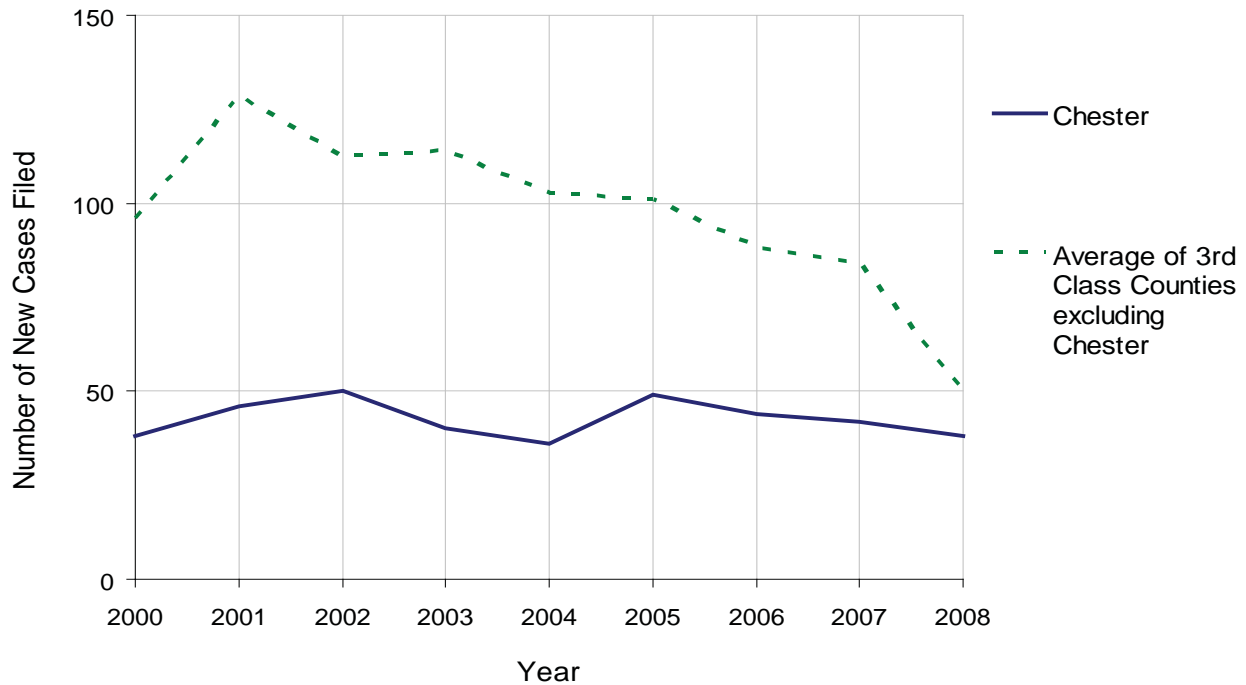
Class of County: 3rd

No. of Common Pleas Court Judgeships: 14



2008 Juvenile Dependency Status Offenses	No. of Petitions	%
Cases Pending 1/1/08	4	
New Cases Filed in '08	38	
Cases Available for Processing	42	
Processed By:		
Judge	0	0.0%
Non-Judicial Officer	38	92.7%
Other	3	7.3%
Cases Processed	41	100.0%
Cases Pending 12/31/08	1	

Status Offenses New Cases Filed, 2000-2008

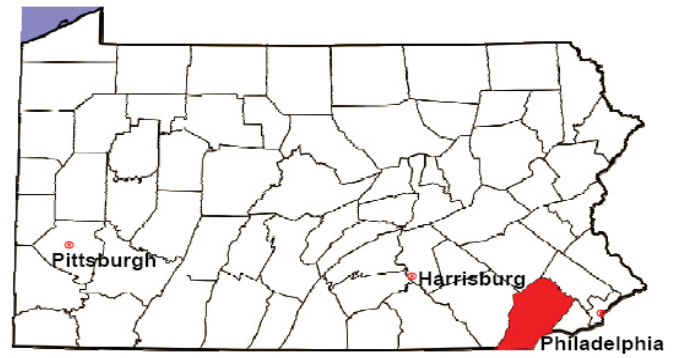


CHESTER COUNTY

2008 Population Estimate: 491,489

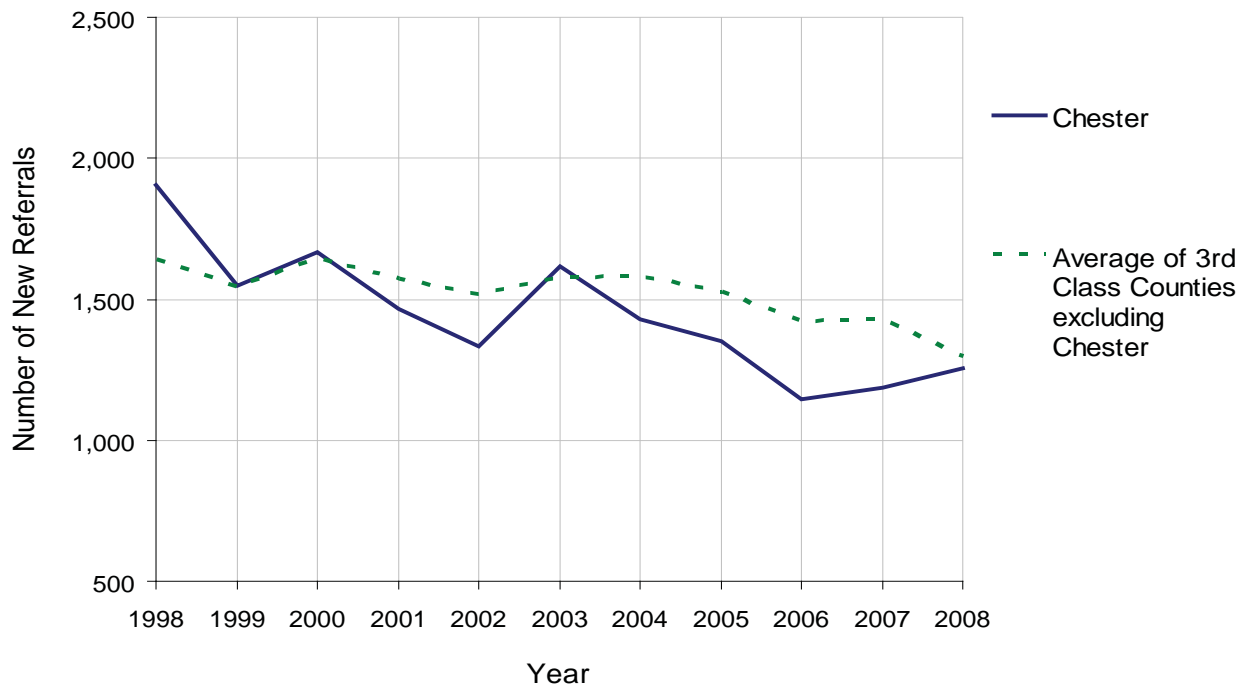
Class of County: 3rd

No. of Common Pleas Court Judgeships: 14



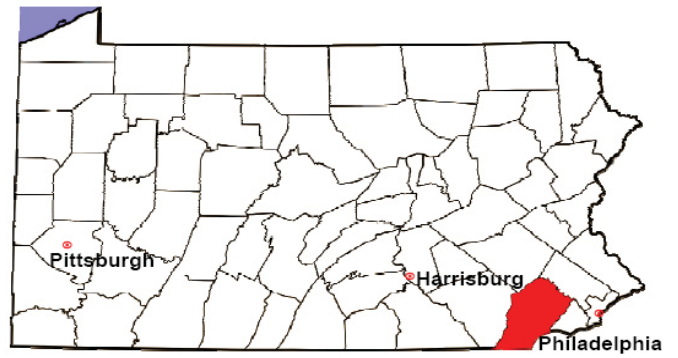
2008 Juvenile Delinquency	No. of Referrals	%
Cases Pending 1/1/08	1,038	
New Referrals in '08	1,255	
Cases Available for Processing	2,293	
Processed By:		
Judge	280	24.5%
Non-Judicial Officer	731	64.1%
Other	130	11.4%
Cases Processed	1,141	100.0%
Cases Pending 12/31/08	1,152	

Juvenile Delinquency New Referrals, 1998-2008



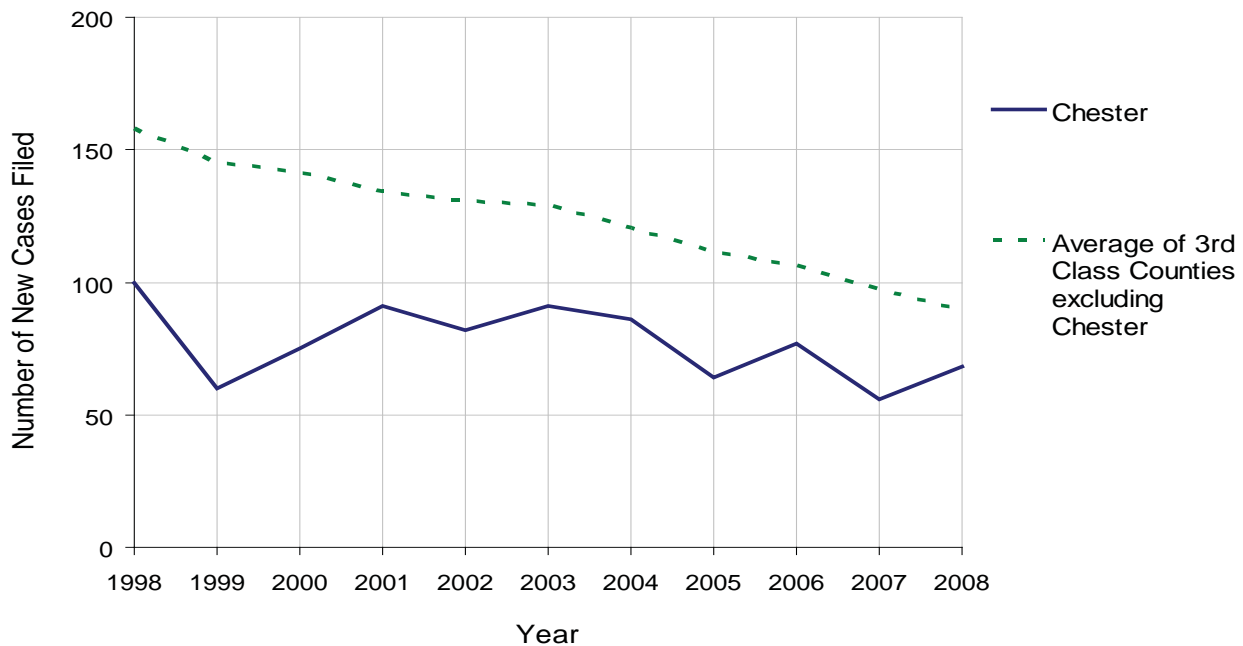
CHESTER COUNTY

2008 Population Estimate: 491,489
 Class of County: 3rd
 No. of Common Pleas Court Judgeships: 14



2008 Accounts	No. of Accounts	%
Cases Pending 1/1/08	16	
New Cases Filed in '08	68	
Cases Available for Processing	84	
Processed By:		
Contested before a Judge	9	15.8%
Contested before a Non-Judicial Officer	0	0.0%
Uncontested	35	61.4%
Other	13	22.8%
Cases Processed	57	100.0%
Cases Pending 12/31/08	27	

Accounts New Cases Filed, 1998-2008

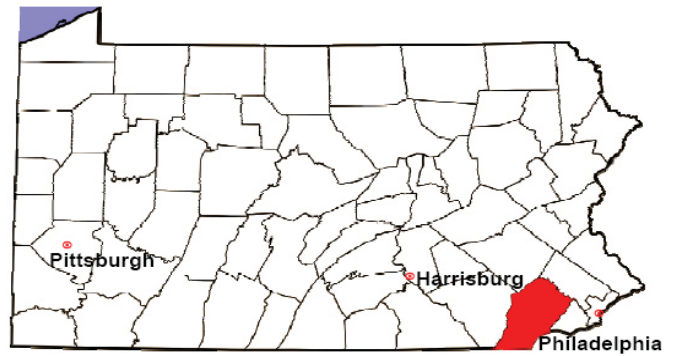


CHESTER COUNTY

2008 Population Estimate: 491,489

Class of County: 3rd

No. of Common Pleas Court Judgeships: 14



2008 Adoptions		No. of Cases	%
Cases Pending 1/1/08		37	
New Cases Filed in '08		71	
Cases Available for Processing		108	
Processed By:			
Contested before a Judge	Granted	2	2.4%
	Denied	2	2.4%
Uncontested	Granted	77	91.7%
	Denied	0	0.0%
Other		3	3.6%
Cases Processed		84	100.0%
Cases Pending 12/31/08		24	

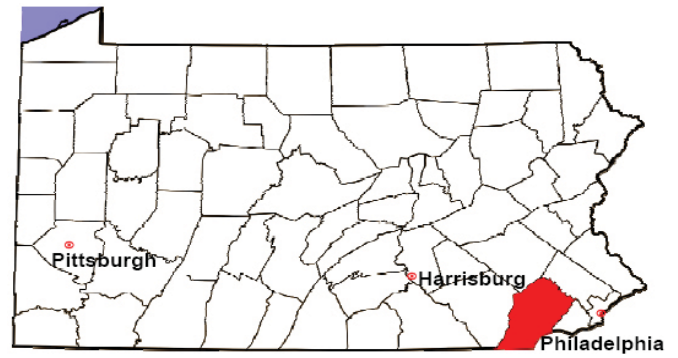
Note: Prior to 2008, each petition was counted as one new case, regardless of the number of children listed on the petition. Starting in 2008, each child listed on a petition is counted as a separate case. Therefore, statistics for 2008 should not be compared with those for previous years.

CHESTER COUNTY

2008 Population Estimate: 491,489

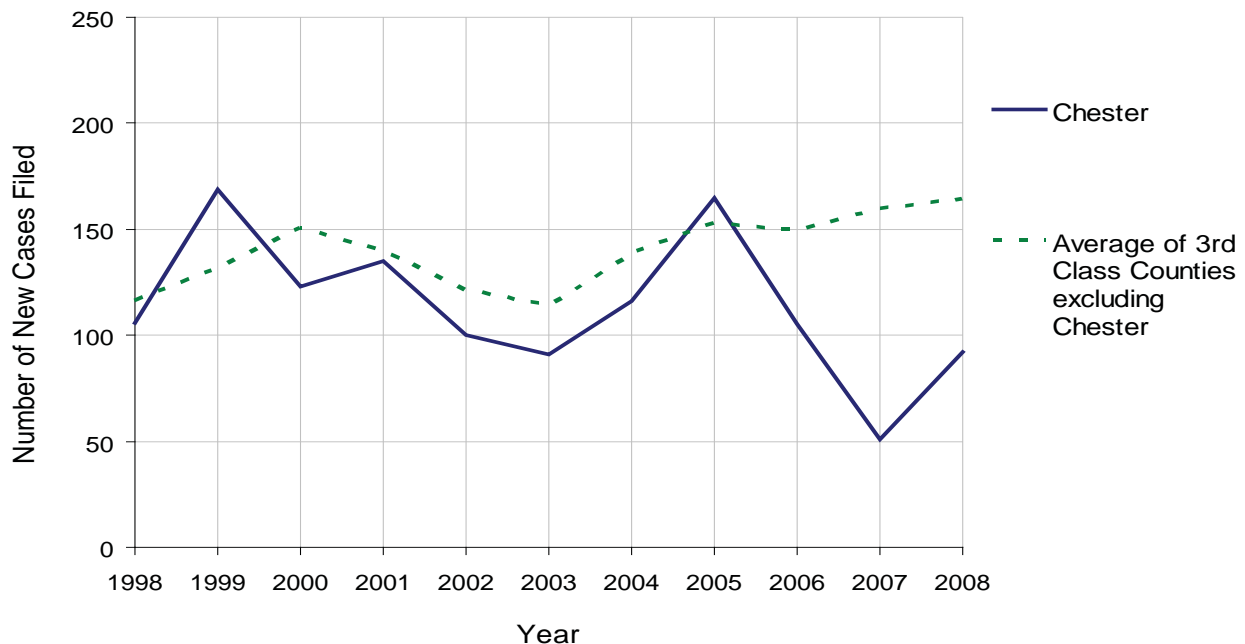
Class of County: 3rd

No. of Common Pleas Court Judgeships: 14



2008 Relinquishments/Terminations	No. of Petitions	%
Cases Pending 1/1/08	29	
New Cases Filed in '08	92	
Cases Available for Processing	121	
Processed By:		
Contested before a Judge	8	10.5%
Uncontested	53	69.7%
Other	15	19.7%
Cases Processed	76	100.0%
Cases Pending 12/31/08	45	

Relinquishments/Terminations New Cases Filed, 1998-2008

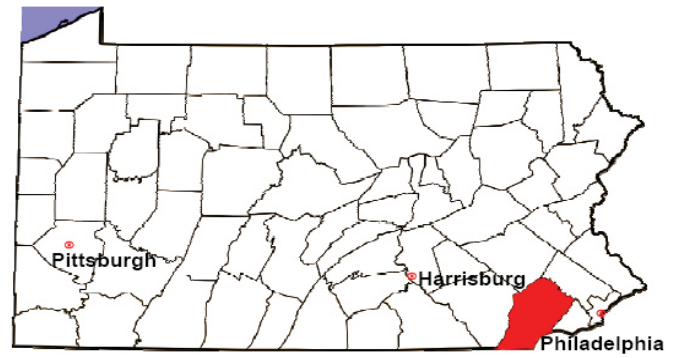


CHESTER COUNTY

2008 Population Estimate: 491,489

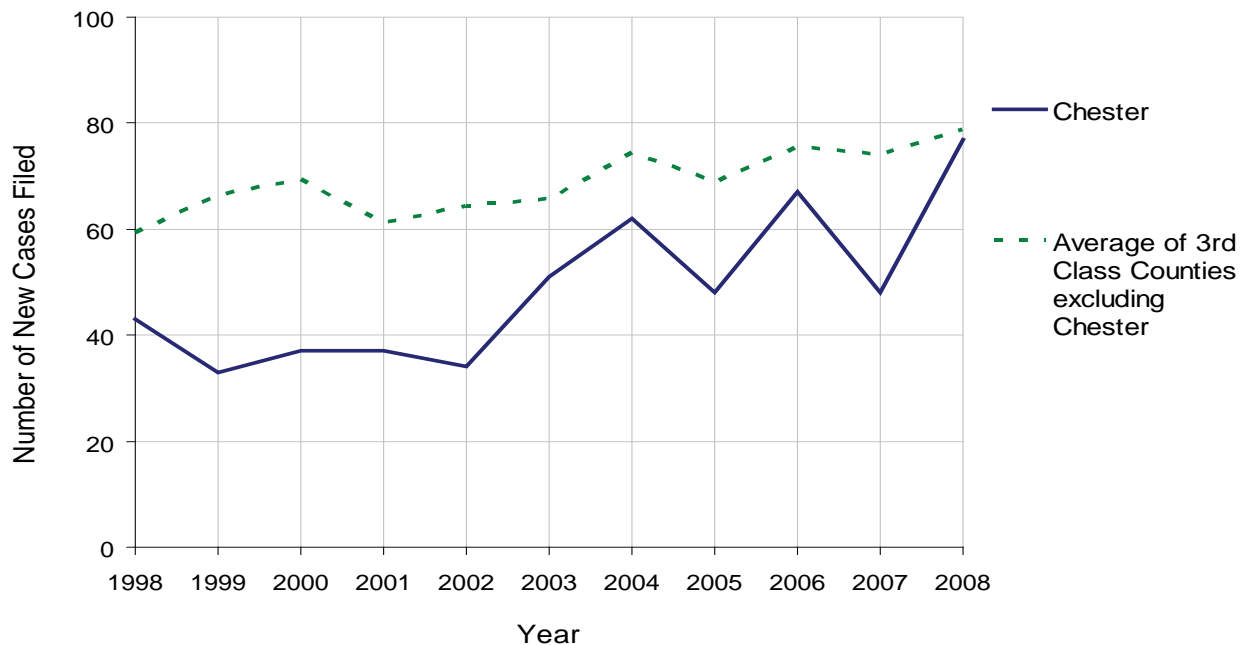
Class of County: 3rd

No. of Common Pleas Court Judgeships: 14



2008 Appointment of Guardians	No. of Petitions	%
Cases Pending 1/1/08	10	
New Cases Filed in '08	77	
Cases Available for Processing	87	
Processed By:		
Contested before a Judge	4	6.7%
Uncontested	47	78.3%
Other	9	15.0%
Cases Processed	60	100.0%
Cases Pending 12/31/08	27	

Appointment of Guardians New Cases Filed, 1998-2008

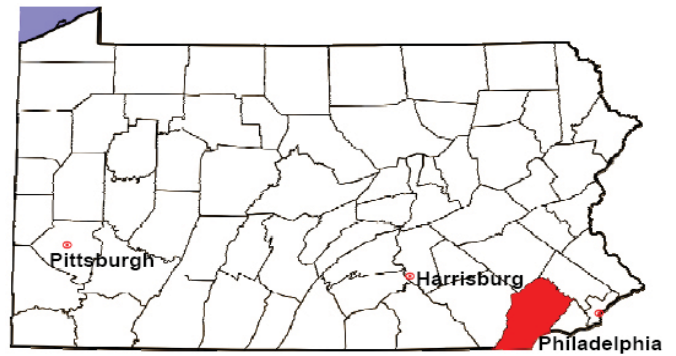


CHESTER COUNTY

2008 Population Estimate: 491,489

Class of County: 3rd

No. of Common Pleas Court Judgeships: 14



2008 Jury Activity & Performance Measures

A. Juror Days	7,595
B. Number Sent to Voir Dire	5,034
Voir Dire Attendance Rate $(B/A * 100)$	66.3%
C. Number of Voir Dires Started	119
Juror Days Per Voir Dire Starts (A/C)	64
D. Number of Jurors Selected	1,298
Juror Selection Rate $(D/B * 100)$	25.8%
E. Number of Jury Trials Started	106
Juror Days Per Trial Starts (A/E)	72
Number of Voir Dires Not Resulting in Trial $(C-E)$	13
Percent Voir Dires Not Resulting in Trial $(C-E)/C * 100$	10.9%
F. Pool Days	106
G. Zero Panel Days	29
Percent Zero Panel Days $(G/F * 100)$	27.4%
H. Total Juror Fees Incurred	\$152,600
Average Juror Fees Per Trial (H/E)	\$1,440

Average Juror Fees Per Trial, 1998-2008

