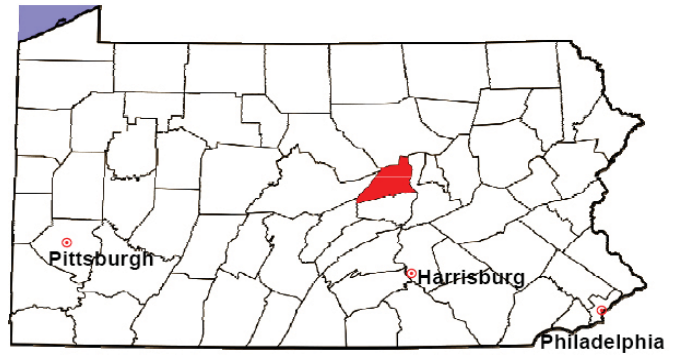


UNION COUNTY

2008 Population Estimate: 43,640

Class of County: 7th

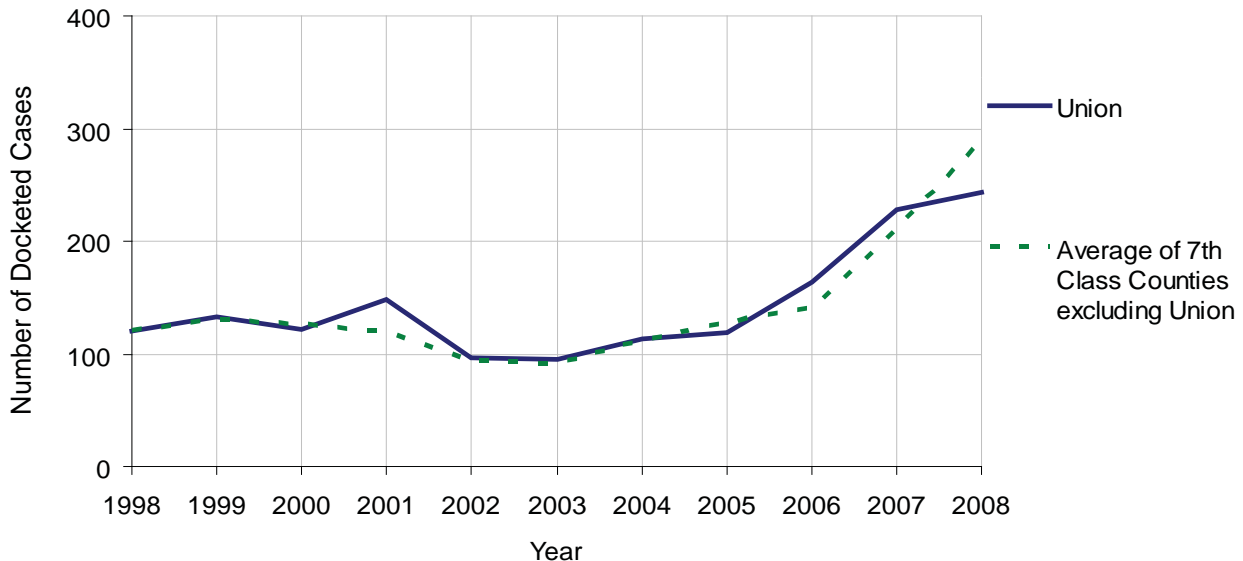
No. of Common Pleas Court Judgeships: 2
(Union and Snyder combined)



2008 Civil	Civil Action		
Docketed Cases	244		
Arbitrated Cases	59		
Trial-Ready Cases:	Civil Action	Other	Total
Cases Pending 1/1/08	49	11	60
Became Trial Ready in '08	33	15	48
Restored to Trial List	1	0	1
Appeals from Arbitration	0	0	0
Cases Available for Trial	83	26	109
Disposed By:			
Settlement	34	15	49
Non-Jury Trial	3	6	9
Jury Trial	1	0	1
Stricken from Trial List	0	0	0
Other	1	4	5
Cases Disposed	39	25	64
Cases Pending 12/31/08	44	1	45

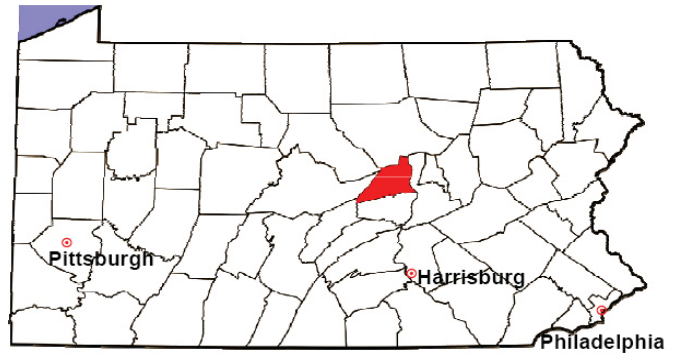
Age of Trial-Ready Cases as of 12/31/08 (Civil Action Only)		
0-6 months	22	50%
7-12 months	14	32%
13-18 months	6	14%
19-24 months	0	0%
25-30 months	0	0%
31-36 months	0	0%
Over 36 months	2	5%
Total	44	100%

Docketed Cases, 1998-2008



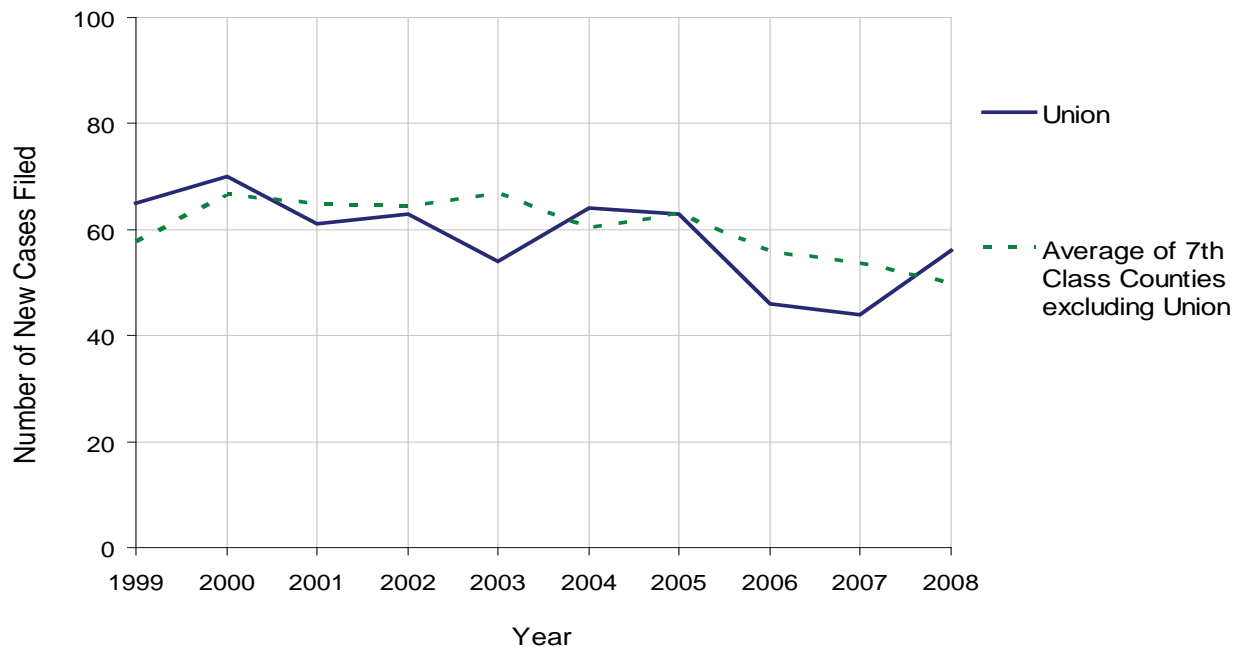
UNION COUNTY

2008 Population Estimate: 43,640
 Class of County: 7th
 No. of Common Pleas Court Judgeships: 2
 (Union and Snyder combined)



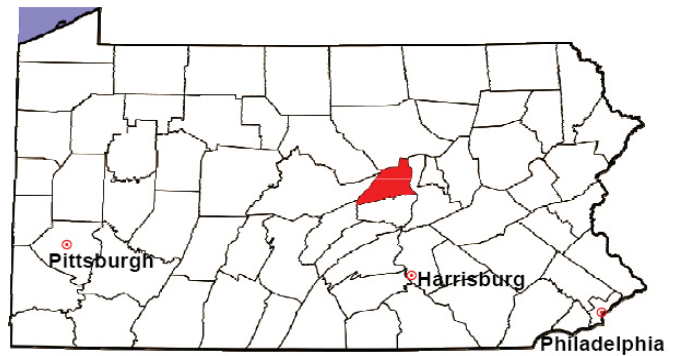
2008 Protection From Abuse	No. of Petitions	%
Cases Pending 1/1/08	5	
New Cases Filed in '08	56	
Cases Available for Processing	61	
Processed By:		
Final Order After Hearing	20	36.4%
Final Order by Stipulation or Agreement	16	29.1%
Dismissal	4	7.3%
Withdrawal	14	25.5%
Other	1	1.8%
Cases Processed	55	100.0%
Cases Pending 12/31/08	6	

PFA New Cases Filed, 1999-2008



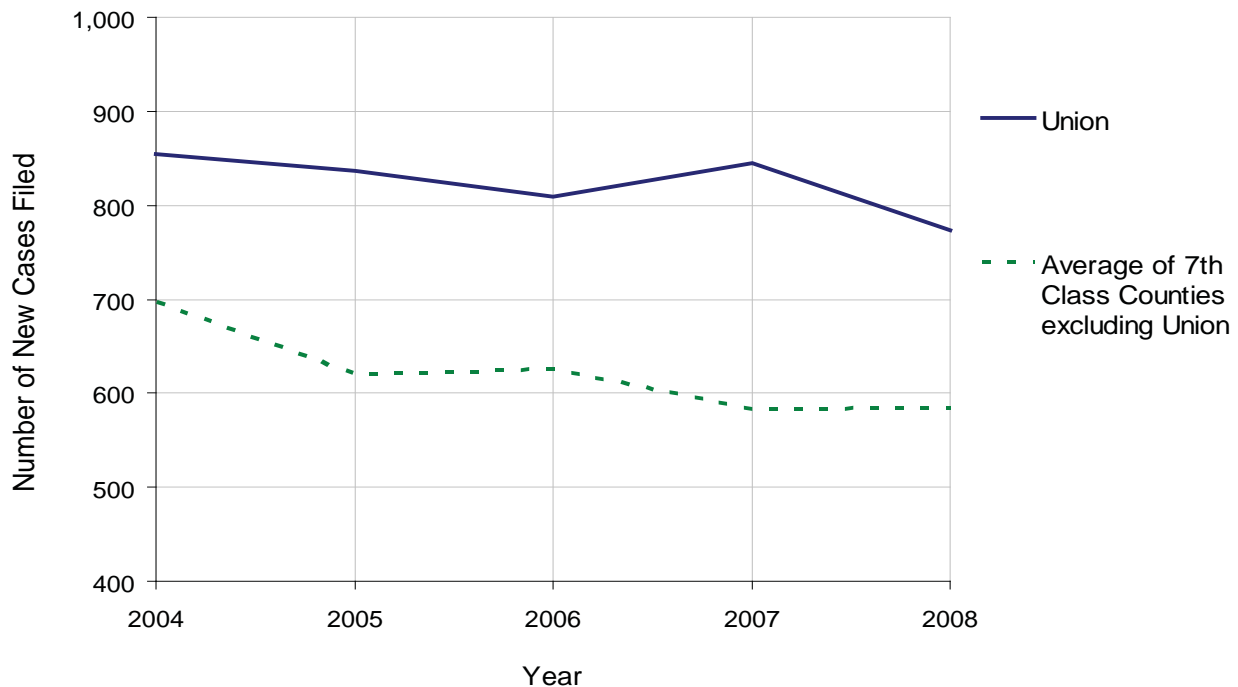
UNION COUNTY

2008 Population Estimate: 43,640
 Class of County: 7th
 No. of Common Pleas Court Judgeships: 2
 (Union and Snyder combined)



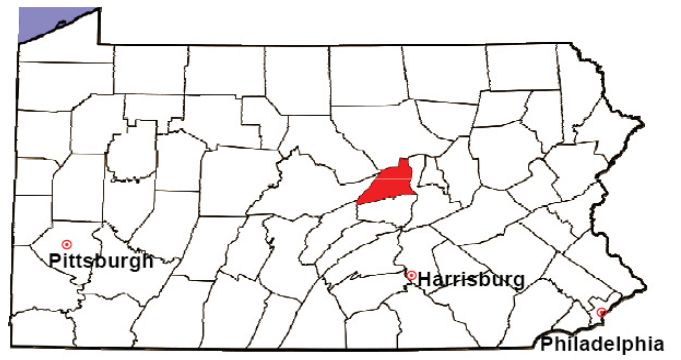
2008 Spousal & Child Support	No. of Petitions	%
Cases Pending 1/1/08	168	
New Cases Filed in '08	774	
Dockets Transferred In (+)	9	
Dockets Transferred Out (-)	20	
Cases Available for Processing	931	
Processed By:		
Judge	19	2.4%
Intake Officer	781	97.6%
Hearing Officer	0	0.0%
Other	0	0.0%
Cases Processed	800	100.0%
Cases Pending 12/31/08	131	

Spousal & Child Support New Cases Filed, 1998-2008



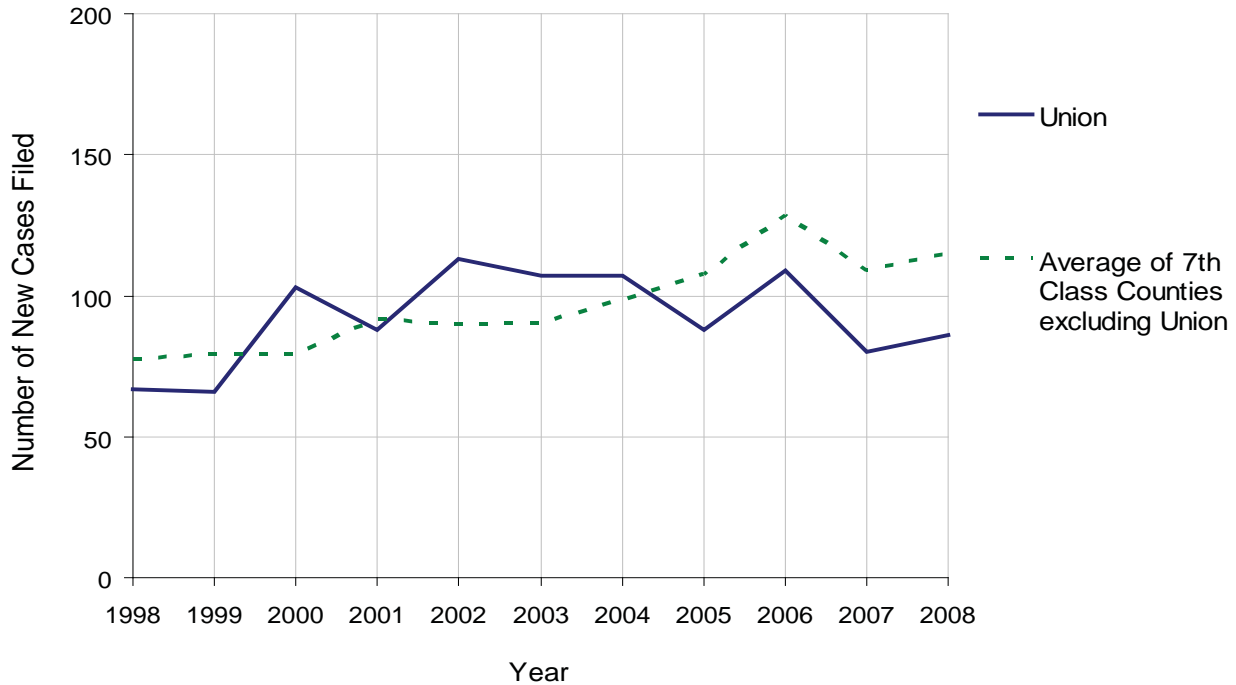
UNION COUNTY

2008 Population Estimate: 43,640
 Class of County: 7th
 No. of Common Pleas Court Judgeships: 2
 (Union and Snyder combined)



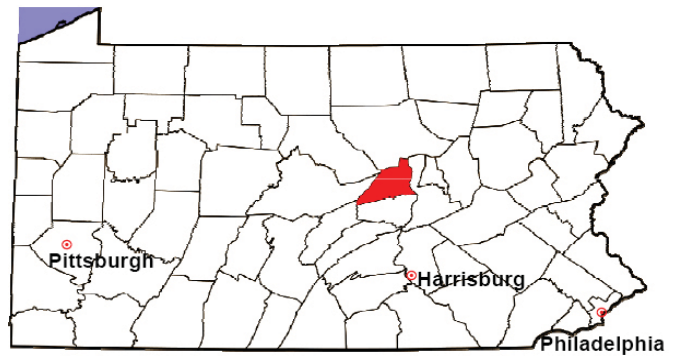
2008 Custody/Partial Custody/Visitation	No. of Petitions	%
Cases Pending 1/1/08	111	
New Cases Filed in '08	86	
Cases Available for Processing	197	
Processed By:		
Judge	57	95.0%
Non-Judicial Officer	0	0.0%
Other	3	5.0%
Cases Processed	60	100.0%
Cases Pending 12/31/08	137	

Custody/Partial Custody/Visitation New Cases Filed
 1998-2008



UNION COUNTY

2008 Population Estimate: 43,640
 Class of County: 7th
 No. of Common Pleas Court Judgeships: 2
 (Union and Snyder combined)



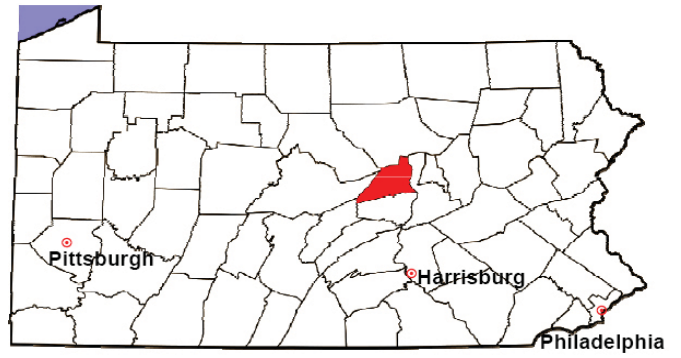
2008 Divorce	No. of Petitions	%
Cases Pending 1/1/08	133	
New Cases Filed in '08	98	
Cases Available for Processing	231	
Processed By:		
Contested Before a Judge	1	1.2%
Contested Before a Master	0	0.0%
Uncontested	79	96.3%
Other	2	2.4%
Cases Processed	82	100.0%
Cases Pending 12/31/08	149	

Divorce New Cases Filed, 1998-2008



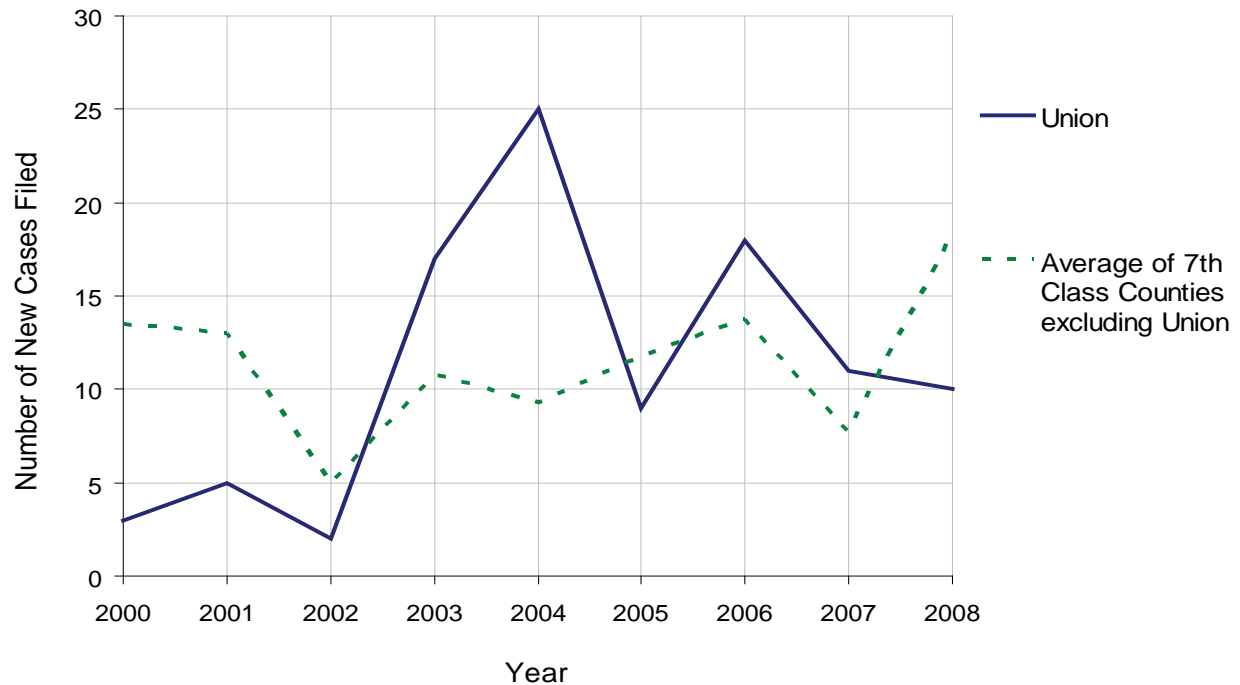
UNION COUNTY

2008 Population Estimate: 43,640
 Class of County: 7th
 No. of Common Pleas Court Judgeships: 2
 (Union and Snyder combined)



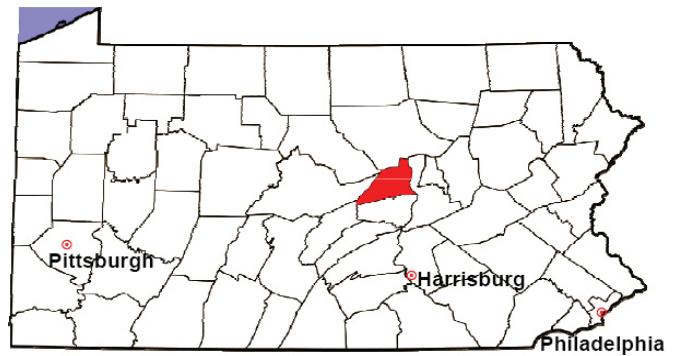
2008 Juvenile Dependency Abuse/Neglect	No. of Petitions	%
Cases Pending 1/1/08	2	
New Cases Filed in '08	10	
Cases Available for Processing	12	
Processed By:		
Judge	5	100.0%
Non-Judicial Officer	0	0.0%
Other	0	0.0%
Cases Processed	5	100.0%
Cases Pending 12/31/08	7	

Abuse/Neglect New Cases Filed, 2000-2008



UNION COUNTY

2008 Population Estimate: 43,640
 Class of County: 7th
 No. of Common Pleas Court Judgeships: 2
 (Union and Snyder combined)



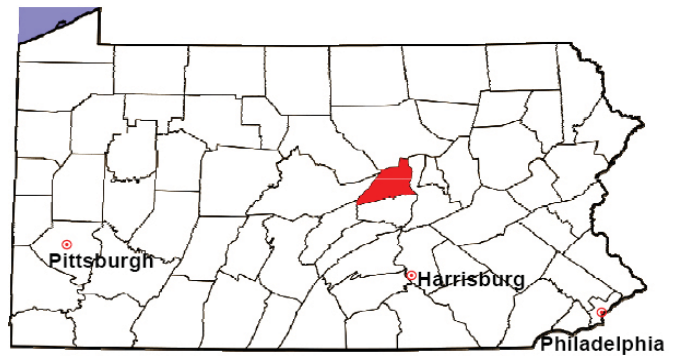
2008 Juvenile Dependency Status Offenses	No. of Petitions	%
Cases Pending 1/1/08	16	
New Cases Filed in '08	1	
Cases Available for Processing	17	
Processed By:		
Judge	7	77.8%
Non-Judicial Officer	2	22.2%
Other	0	0.0%
Cases Processed	9	100.0%
Cases Pending 12/31/08	8	

Status Offenses New Cases Filed, 2000-2008



UNION COUNTY

2008 Population Estimate: 43,640
 Class of County: 7th
 No. of Common Pleas Court Judgeships: 2
 (Union and Snyder combined)



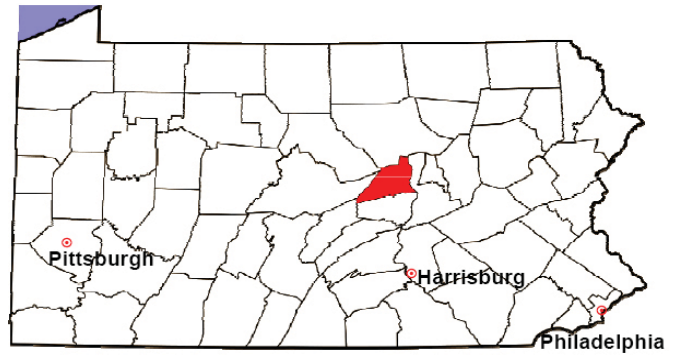
2008 Juvenile Delinquency	No. of Referrals	%
Cases Pending 1/1/08	80	
New Referrals in '08	70	
Cases Available for Processing	150	
Processed By:		
Judge	35	49.3%
Non-Judicial Officer	24	33.8%
Other	12	16.9%
Cases Processed	71	100.0%
Cases Pending 12/31/08	79	

Juvenile Delinquency New Referrals, 1998-2008



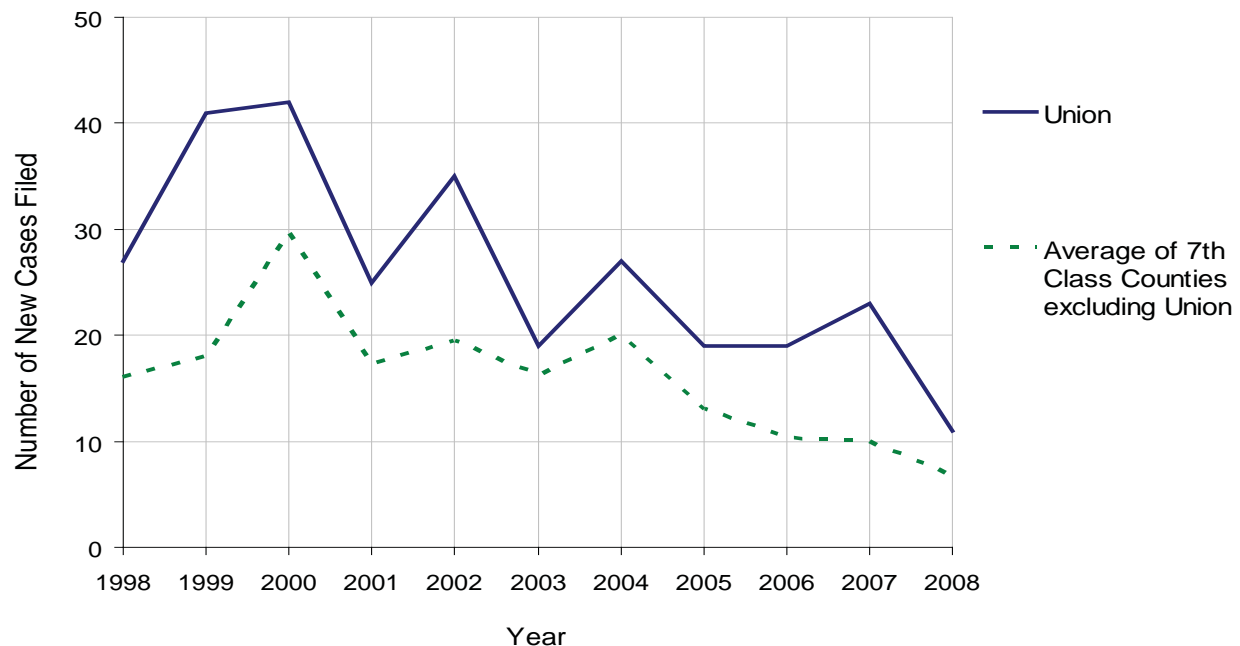
UNION COUNTY

2008 Population Estimate: 43,640
 Class of County: 7th
 No. of Common Pleas Court Judgeships: 2
 (Union and Snyder combined)



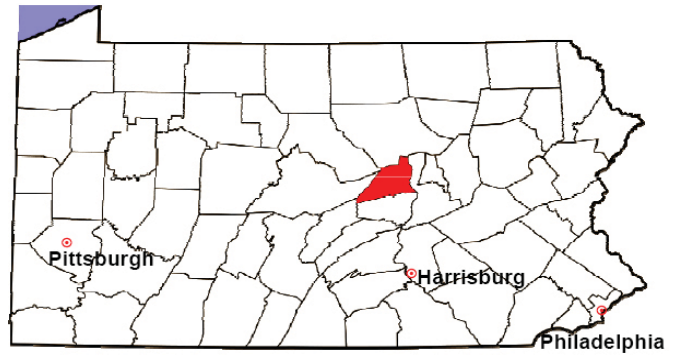
2008 Accounts	No. of Accounts	%
Cases Pending 1/1/08	10	
New Cases Filed in '08	11	
Cases Available for Processing	21	
Processed By:		
Contested before a Judge	2	11.1%
Contested before a Non-Judicial Officer	0	0.0%
Uncontested	16	88.9%
Other	0	0.0%
Cases Processed	18	100.0%
Cases Pending 12/31/08	3	

Accounts New Cases Filed, 1998-2008



UNION COUNTY

2008 Population Estimate: 43,640
 Class of County: 7th
 No. of Common Pleas Court Judgeships: 2
 (Union and Snyder combined)

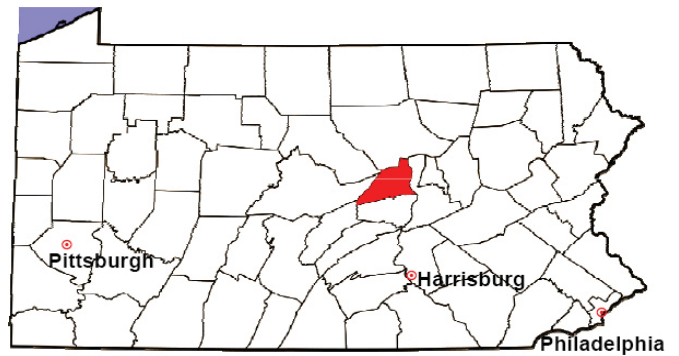


2008 Adoptions		No. of Cases	%
Cases Pending 1/1/08		8	
New Cases Filed in '08		9	
Cases Available for Processing		17	
Processed By:			
Contested before a Judge	Granted	3	20.0%
	Denied	0	0.0%
Uncontested	Granted	12	80.0%
	Denied	0	0.0%
Other		0	0.0%
Cases Processed		15	100.0%
Cases Pending 12/31/08		2	

Note: Prior to 2008, each petition was counted as one new case, regardless of the number of children listed on the petition. Starting in 2008, each child listed on a petition is counted as a separate case. Therefore, statistics for 2008 should not be compared with those for previous years.

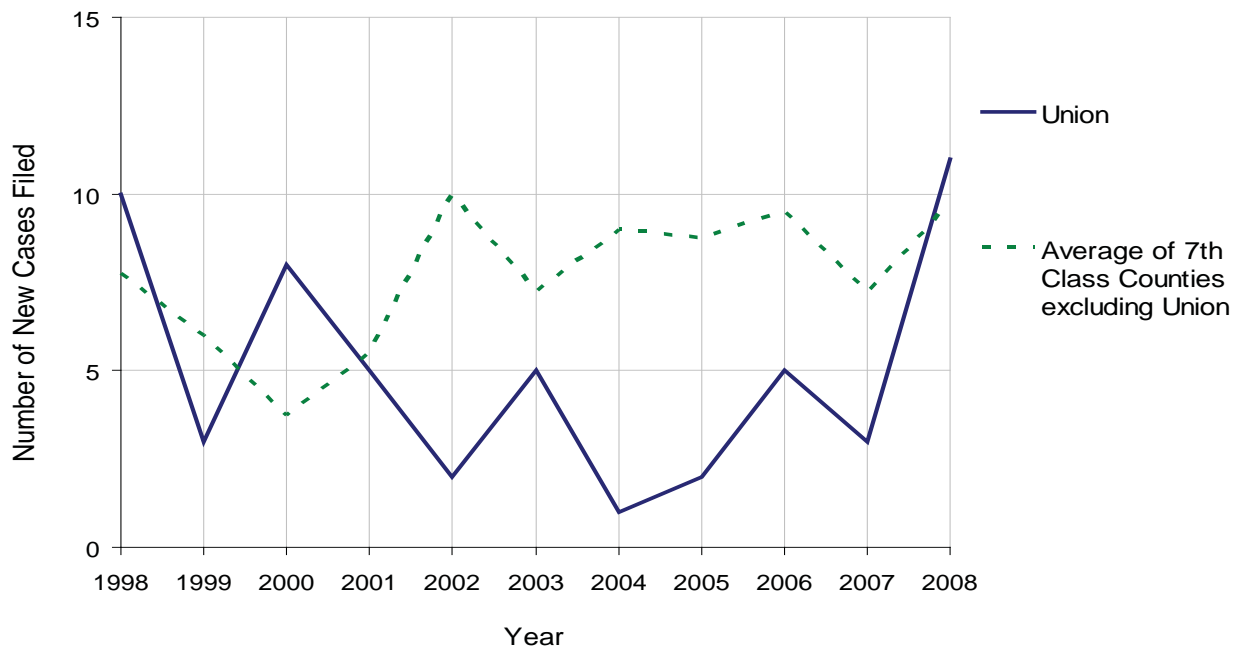
UNION COUNTY

2008 Population Estimate: 43,640
 Class of County: 7th
 No. of Common Pleas Court Judgeships: 2
 (Union and Snyder combined)



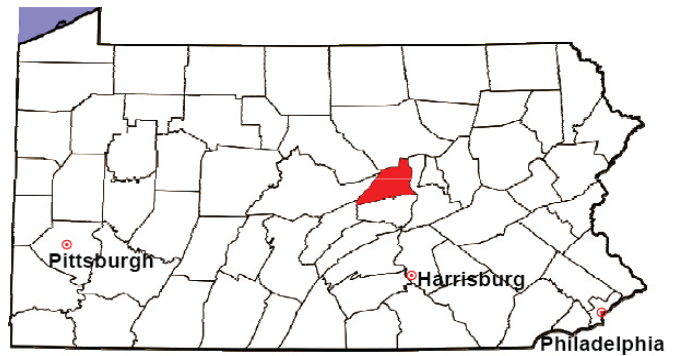
2008 Relinquishments/Terminations	No. of Petitions	%
Cases Pending 1/1/08	0	
New Cases Filed in '08	11	
Cases Available for Processing	11	
Processed By:		
Contested before a Judge	1	11.1%
Uncontested	8	88.9%
Other	0	0.0%
Cases Processed	9	100.0%
Cases Pending 12/31/08	2	

Relinquishments/Terminations New Cases Filed, 1998-2008



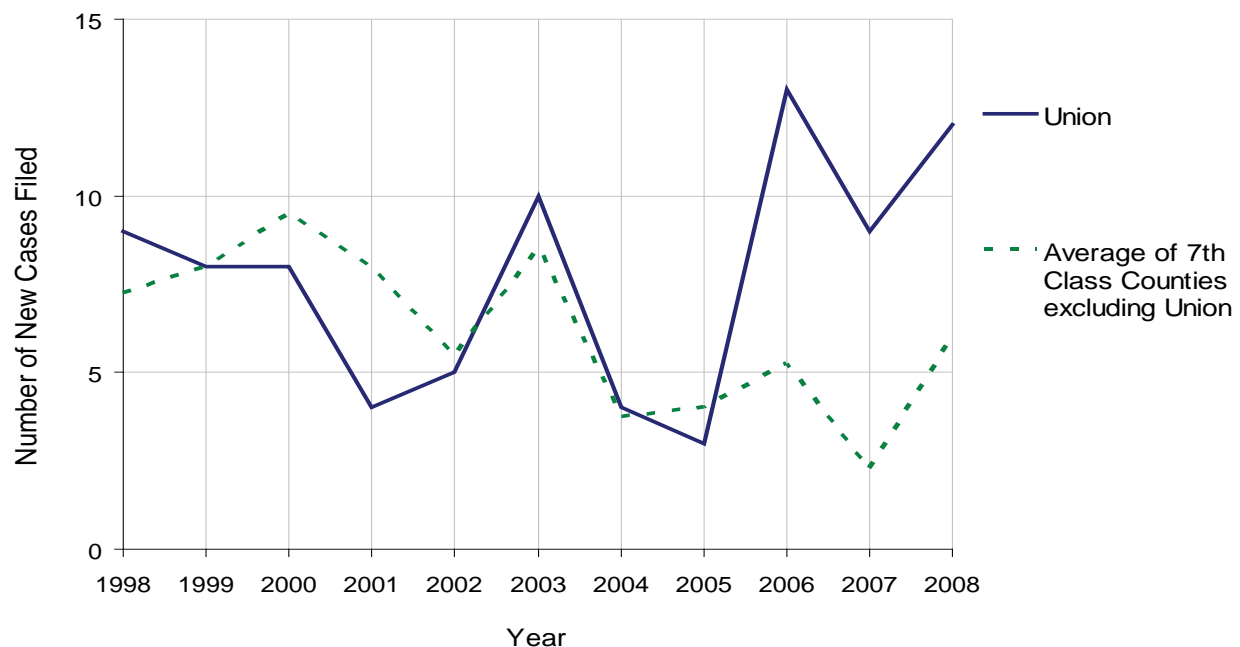
UNION COUNTY

2008 Population Estimate: 43,640
 Class of County: 7th
 No. of Common Pleas Court Judgeships: 2
 (Union and Snyder combined)



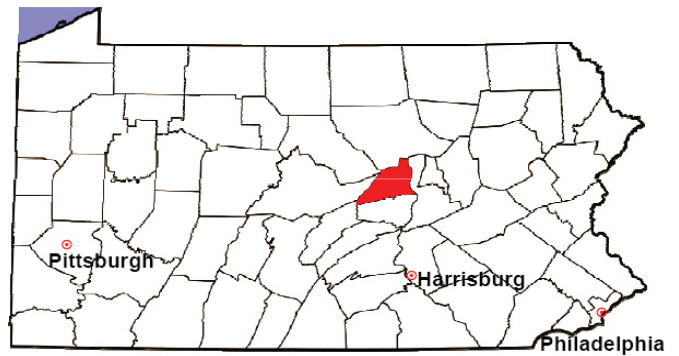
2008 Appointment of Guardians	No. of Petitions	%
Cases Pending 1/1/08	3	
New Cases Filed in '08	12	
Cases Available for Processing	15	
Processed By:		
Contested before a Judge	2	13.3%
Uncontested	13	86.7%
Other	0	0.0%
Cases Processed	15	100.0%
Cases Pending 12/31/08	0	

Appointment of Guardians New Cases Filed, 1998-2008



UNION COUNTY

2008 Population Estimate: 43,640
 Class of County: 7th
 No. of Common Pleas Court Judgeships: 2
 (Union and Snyder combined)



2008 Jury Activity & Performance Measures		
A. Juror Days		563
B. Number Sent to Voir Dire		418
	Voir Dire Attendance Rate $(B/A * 100)$	74.2%
C. Number of Voir Dires Started		10
	Juror Days Per Voir Dire Starts (A/C)	56
D. Number of Jurors Selected		138
	Juror Selection Rate $(D/B * 100)$	33.0%
E. Number of Jury Trials Started		9
	Juror Days Per Trial Starts (A/E)	63
	Number of Voir Dires Not Resulting in Trial $(C-E)$	1
	Percent Voir Dires Not Resulting in Trial $(C-E)/C * 100$	10.0%
F. Pool Days		3
G. Zero Panel Days		0
	Percent Zero Panel Days $(G/F * 100)$	0.0%
H. Total Juror Fees Incurred		\$7,777
	Average Juror Fees Per Trial (H/E)	\$864

Average Juror Fees Per Trial, 1998-2008

