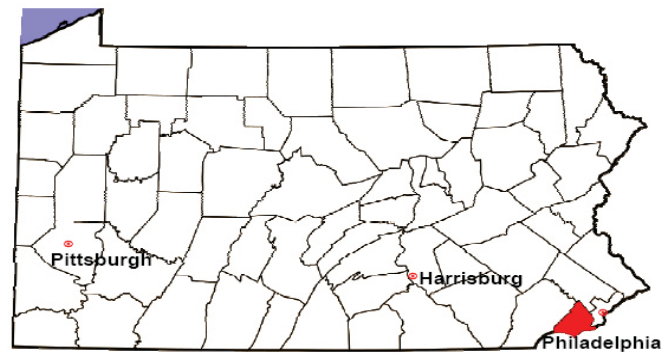


DELAWARE COUNTY

2008 Population Estimate: 553,619

Class of County: 2A

No. of Common Pleas Court Judgeships: 19

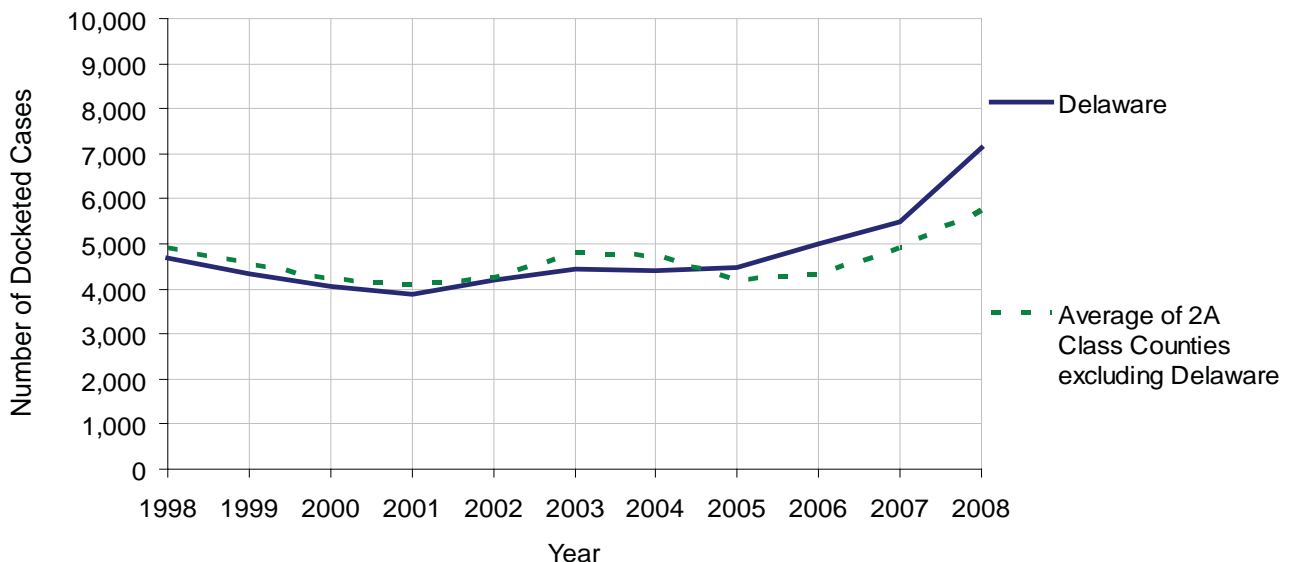


2008 Civil	Civil Action		
Docketed Cases	7,145		
Arbitrated Cases	730		
Trial-Ready Cases:	Civil Action	Other	Total
Cases Pending 1/1/08*	2,268	1,288	3,556
Became Trial Ready in '08	1,633	2,280	3,913
Restored to Trial List	51	4	55
Appeals from Arbitration	237	0	237
Cases Available for Trial	4,189	3,572	7,761
DISPOSED BY:			
Settlement	1,225	694	1,919
Non-Jury Trial	79	10	89
Jury Trial	69	0	69
Stricken from Trial List	37	22	59
Other	663	1,573	2,236
Cases Disposed	2,073	2,299	4,372
Cases Pending 12/31/08	2,116	1,273	3,389

Age of Trial-Ready Cases as of 12/31/08 (Civil Action Only)		
0-6 months	780	37%
7-12 months	596	28%
13-18 months	336	16%
19-24 months	179	8%
25-30 months	62	3%
31-36 months	39	2%
37-42 months	17	0.8%
43-48 months	10	0.5%
49-54 months	9	0.4%
55-60 months	10	0.5%
61-66 months	8	0.4%
67-72 months	9	0.4%
Over 72 months	61	2.9%
Total	2,116	100%

* Includes all cases pending from first filing.

Docketed Cases, 1998-2008

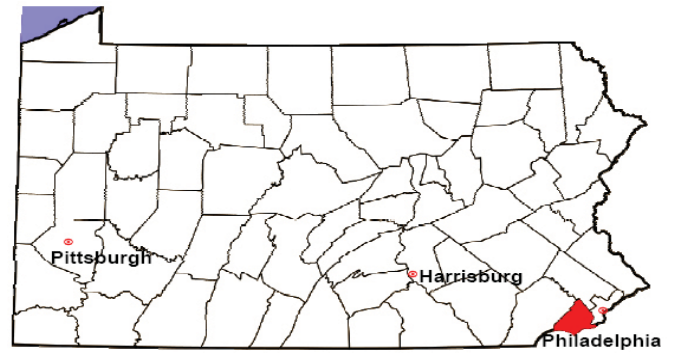


DELAWARE COUNTY

2008 Population Estimate: 553,619

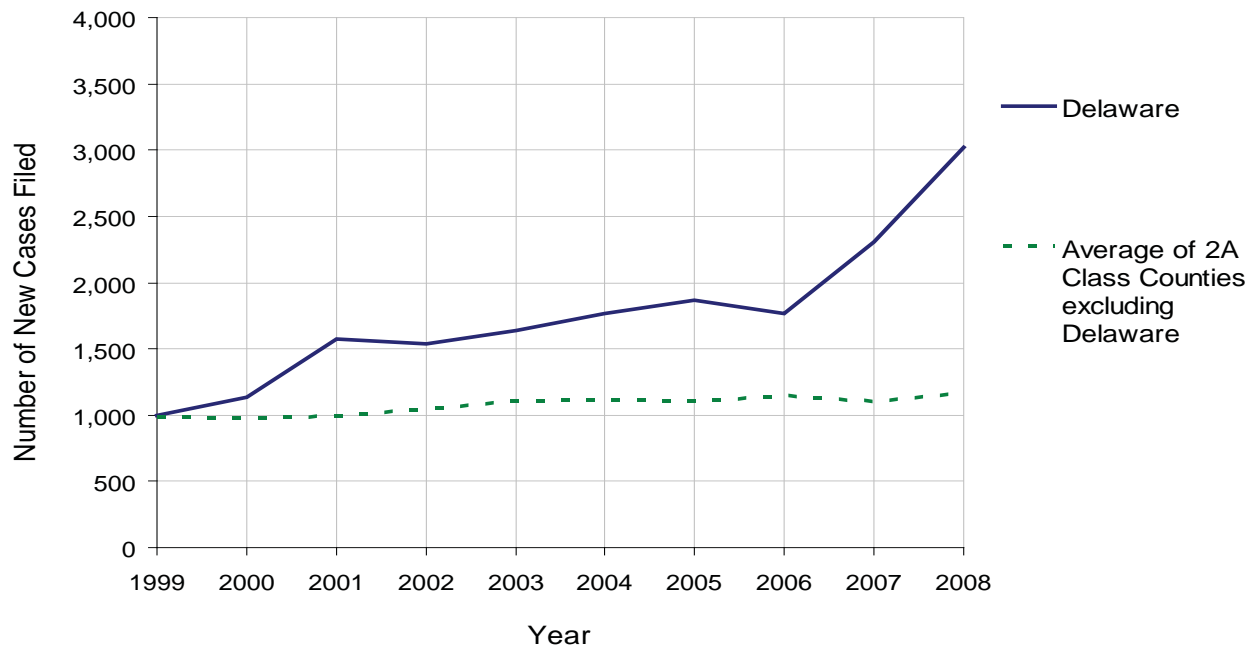
Class of County: 2A

No. of Common Pleas Court Judgeships: 19



2008 Protection From Abuse	No. of Petitions	%
Cases Pending 1/1/08	1,140	
New Cases Filed in '08	3,019	
Cases Available for Processing	4,159	
Processed By:		
Final Order After Hearing	390	22.5%
Final Order by Stipulation or Agreement	322	18.6%
Dismissal	699	40.3%
Withdrawal	322	18.6%
Other	0	0.0%
Cases Processed	1,733	100.0%
Cases Pending 12/31/08	2,426	

PFA New Cases Filed, 1999-2008

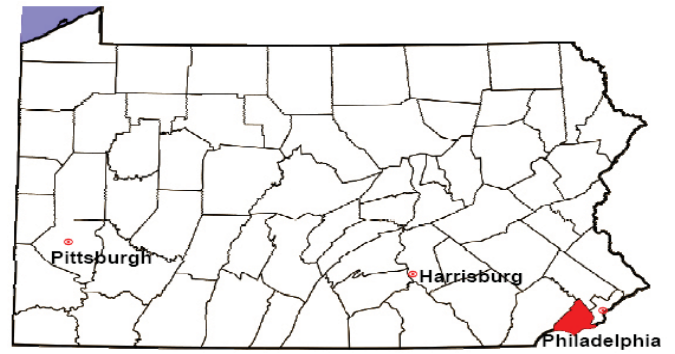


DELAWARE COUNTY

2008 Population Estimate: 553,619

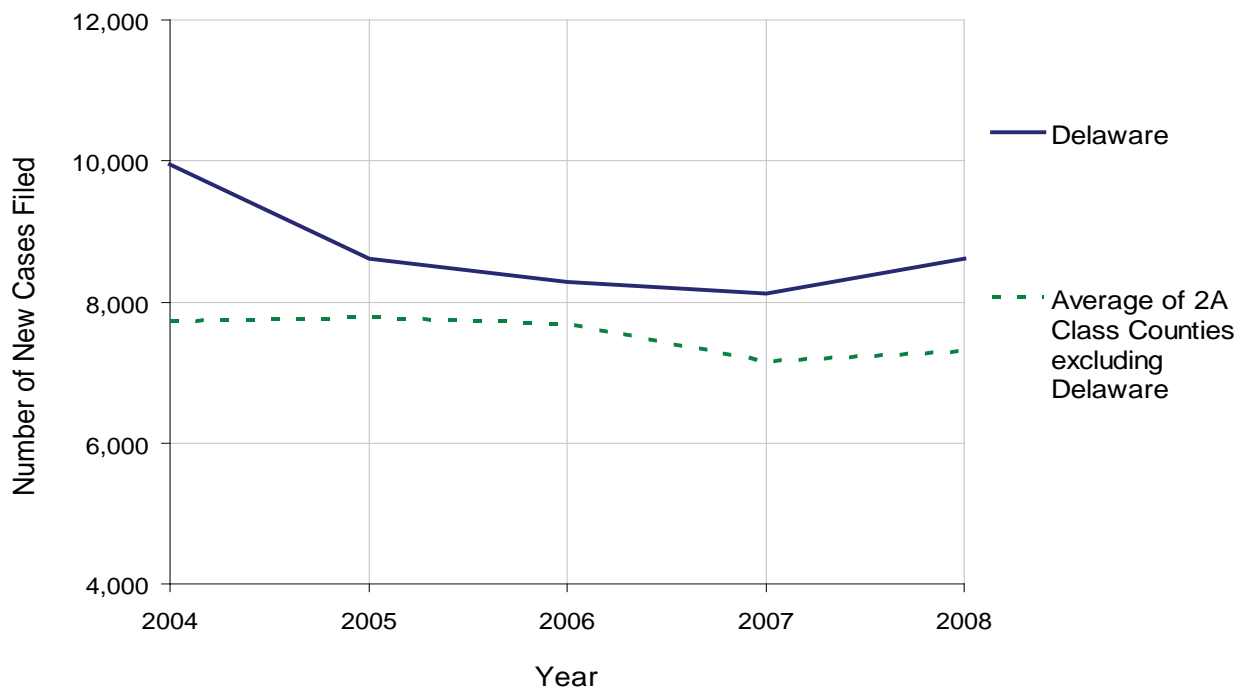
Class of County: 2A

No. of Common Pleas Court Judgeships: 19



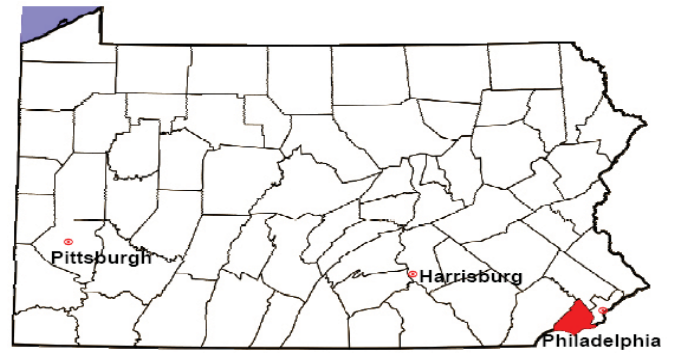
2008 Spousal & Child Support	No. of Petitions	%
Cases Pending 1/1/08	5,423	
New Cases Filed in '08	8,606	
Dockets Transferred In (+)	201	
Dockets Transferred Out (-)	180	
Cases Available for Processing	14,050	
Processed By:		
Judge	580	6.1%
Intake Officer	5,811	60.9%
Hearing Officer	3,152	33.0%
Other	1	0.0%
Cases Processed	9,544	100.0%
Cases Pending 12/31/08	4,506	

Spousal & Child Support New Cases Filed, 1998-2008



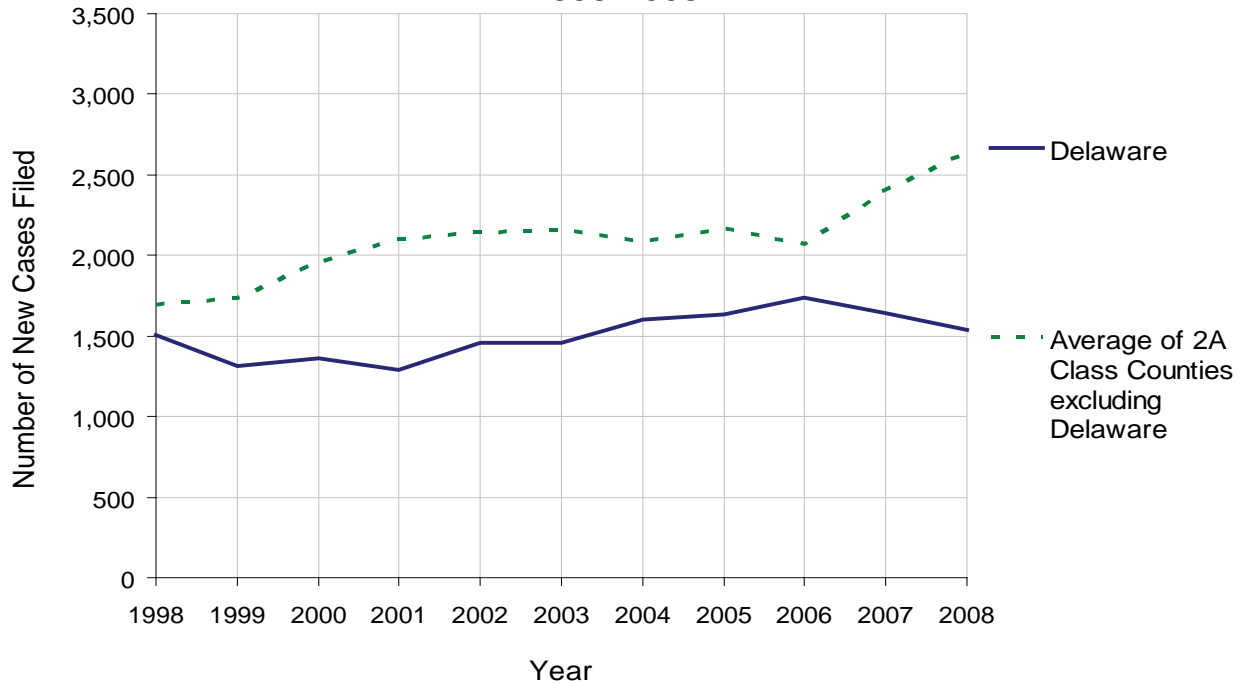
DELAWARE COUNTY

2008 Population Estimate: 553,619
 Class of County: 2A
 No. of Common Pleas Court Judgeships: 19



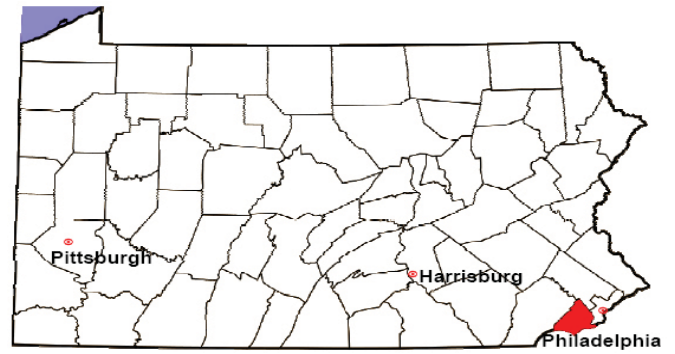
2008 Custody/Partial Custody/Visitation	No. of Petitions	%
Cases Pending 1/1/08	297	
New Cases Filed in '08	1,541	
Cases Available for Processing	1,838	
Processed By:		
Judge	245	15.2%
Non-Judicial Officer	1,177	73.1%
Other	189	11.7%
Cases Processed	1,611	100.0%
Cases Pending 12/31/08	227	

Custody/Partial Custody/Visitation New Cases Filed
 1998-2008



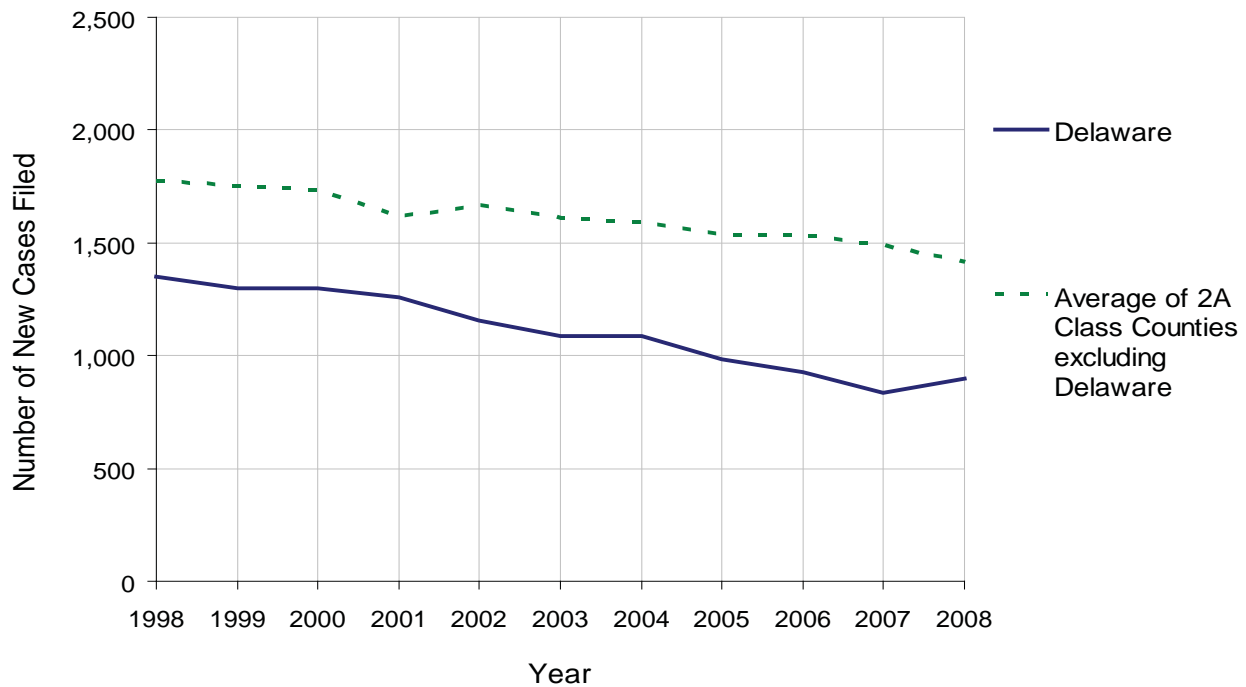
DELAWARE COUNTY

2008 Population Estimate: 553,619
 Class of County: 2A
 No. of Common Pleas Court Judgeships: 19



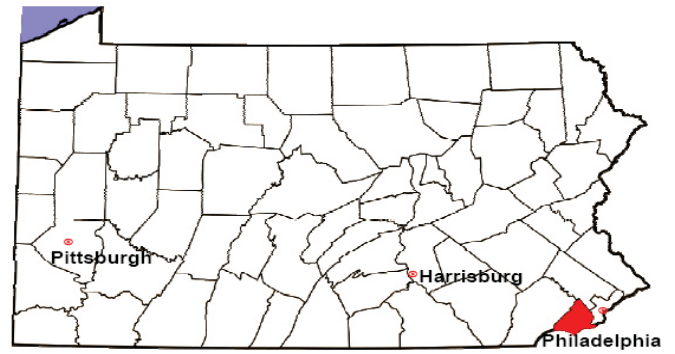
2008 Divorce	No. of Petitions	%
Cases Pending 1/1/08	2,432	
New Cases Filed in '08	897	
Cases Available for Processing	3,329	
Processed By:		
Contested Before a Judge	0	0.0%
Contested Before a Master	0	0.0%
Uncontested	753	99.9%
Other	1	0.1%
Cases Processed	754	100.0%
Cases Pending 12/31/08	2,575	

Divorce New Cases Filed, 1998-2008



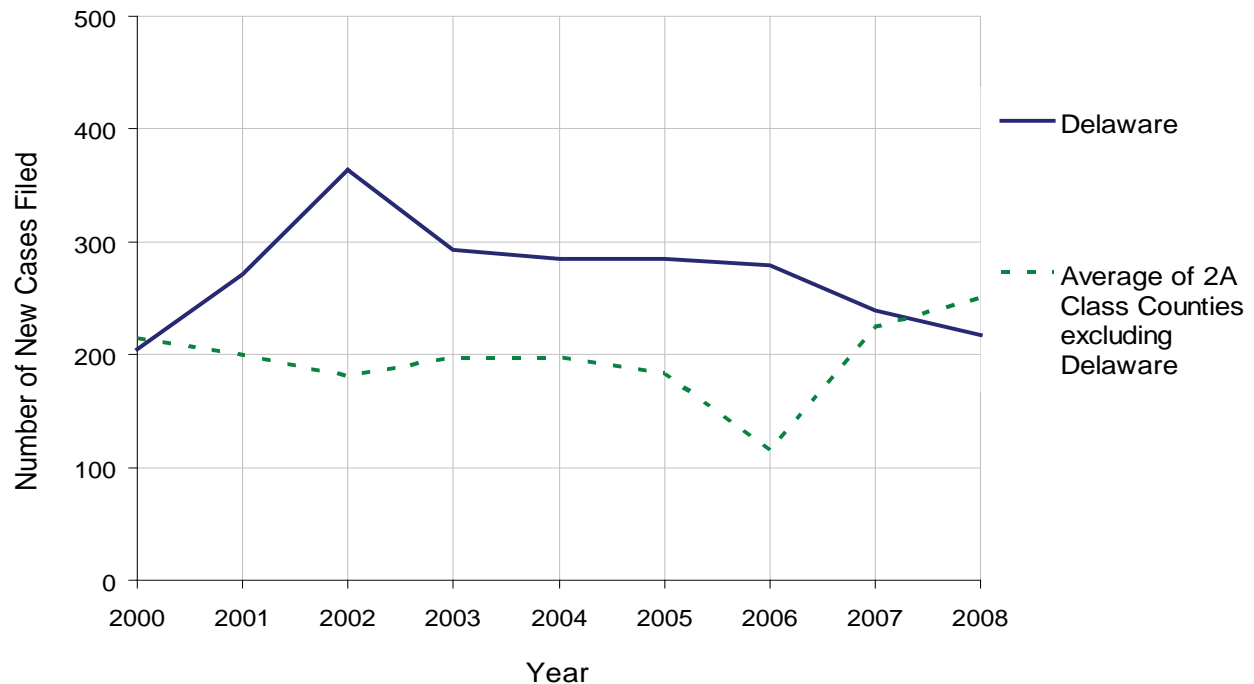
DELAWARE COUNTY

2008 Population Estimate: 553,619
 Class of County: 2A
 No. of Common Pleas Court Judgeships: 19



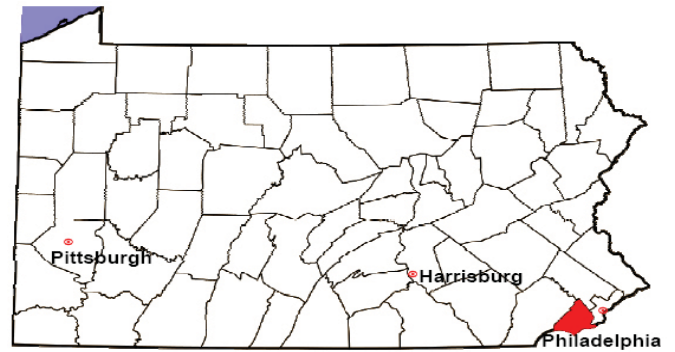
2008 Juvenile Dependency Abuse/Neglect	No. of Petitions	%
Cases Pending 1/1/08	26	
New Cases Filed in '08	217	
Cases Available for Processing	243	
Processed By:		
Judge	3	1.4%
Non-Judicial Officer	161	77.8%
Other	43	20.8%
Cases Processed	207	100.0%
Cases Pending 12/31/08	36	

Abuse/Neglect New Cases Filed, 2000-2008



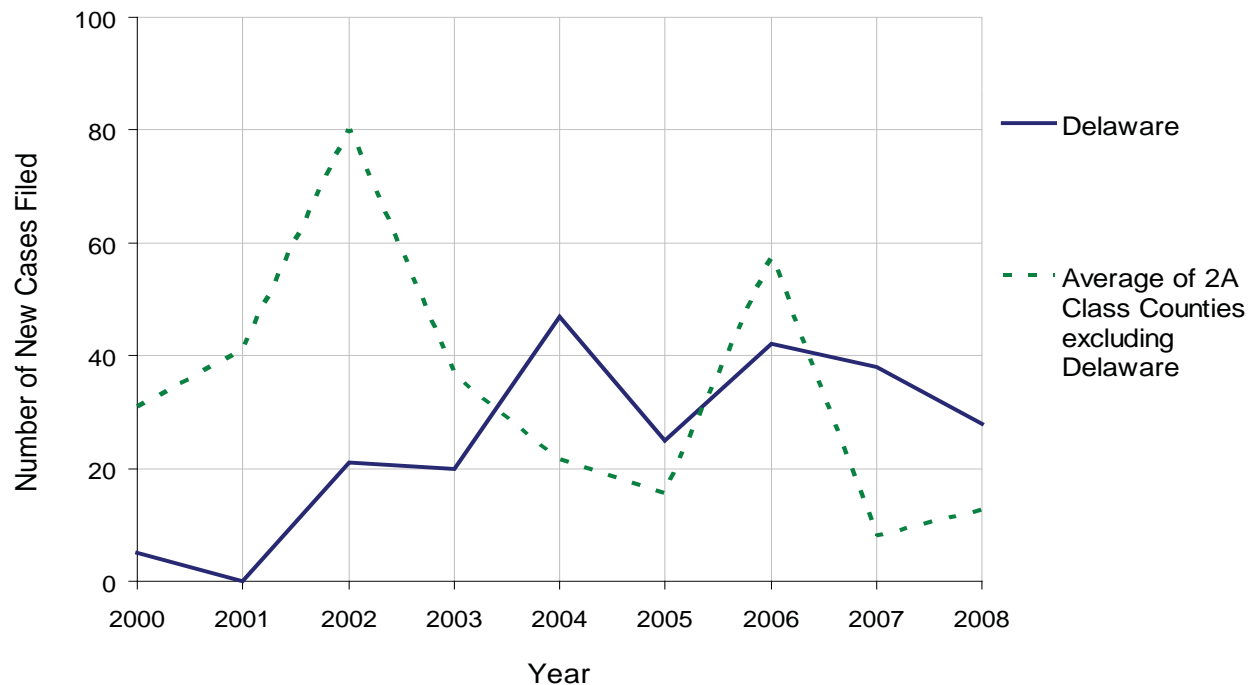
DELAWARE COUNTY

2008 Population Estimate: 553,619
 Class of County: 2A
 No. of Common Pleas Court Judgeships: 19



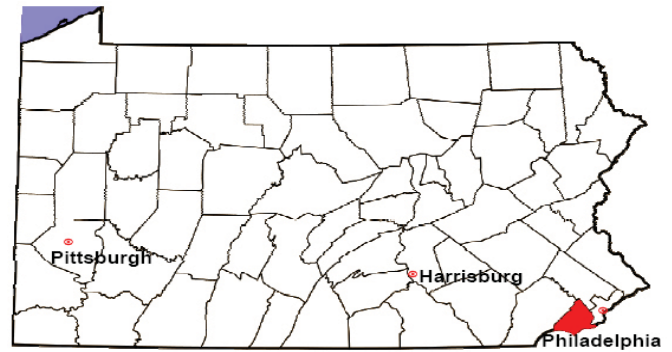
2008 Juvenile Dependency Status Offenses	No. of Petitions	%
Cases Pending 1/1/08	0	
New Cases Filed in '08	28	
Cases Available for Processing	28	
Processed By:		
Judge	0	0.0%
Non-Judicial Officer	22	95.7%
Other	1	4.3%
Cases Processed	23	100.0%
Cases Pending 12/31/08	5	

Status Offenses New Cases Filed, 2000-2008



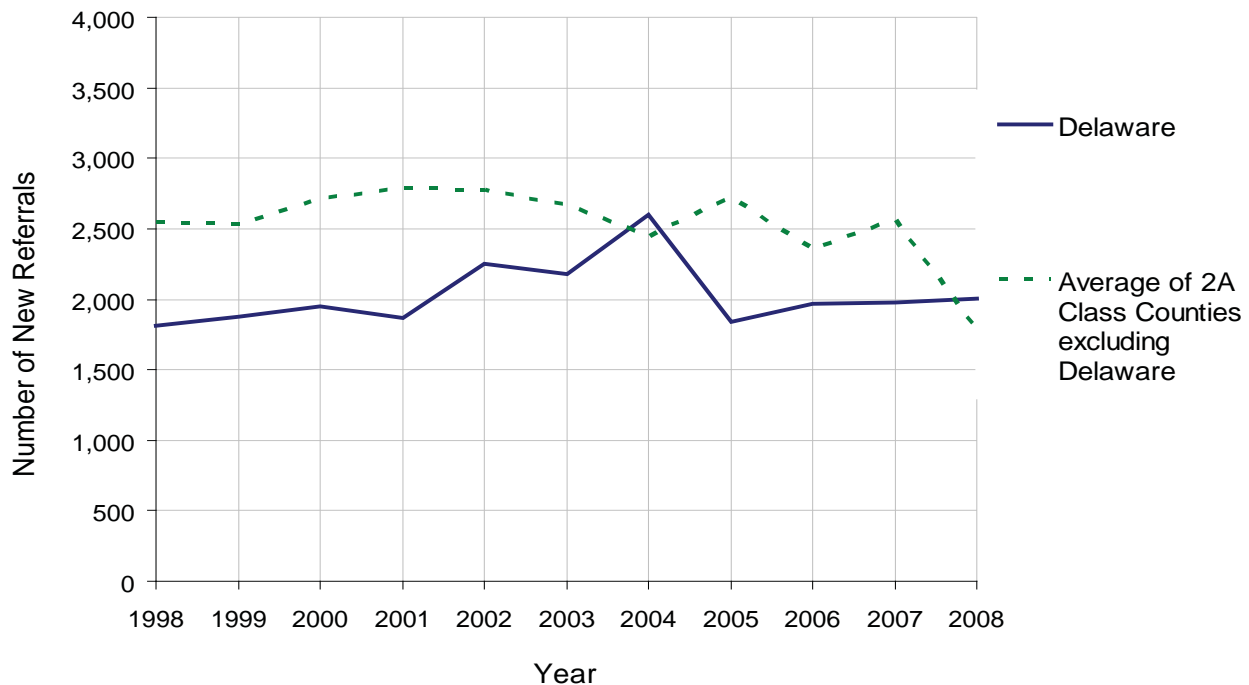
DELAWARE COUNTY

2008 Population Estimate: 553,619
 Class of County: 2A
 No. of Common Pleas Court Judgeships: 19



2008 Juvenile Delinquency	No. of Referrals	%
Cases Pending 1/1/08	1,125	
New Referrals in '08	2,006	
Cases Available for Processing	3,131	
Processed By:		
Judge	569	30.5%
Non-Judicial Officer	815	43.7%
Other	482	25.8%
Cases Processed	1,866	100.0%
Cases Pending 12/31/08	1,265	

Juvenile Delinquency New Referrals, 1998-2008

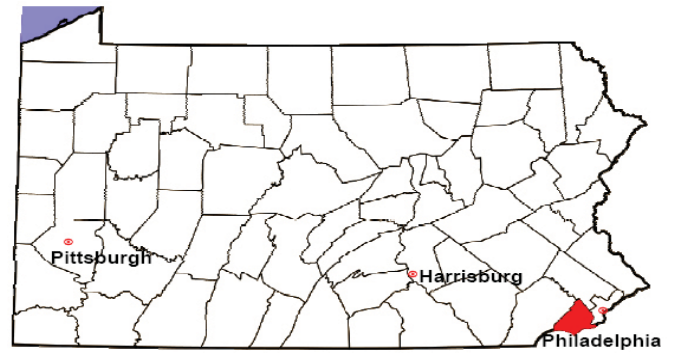


DELAWARE COUNTY

2008 Population Estimate: 553,619

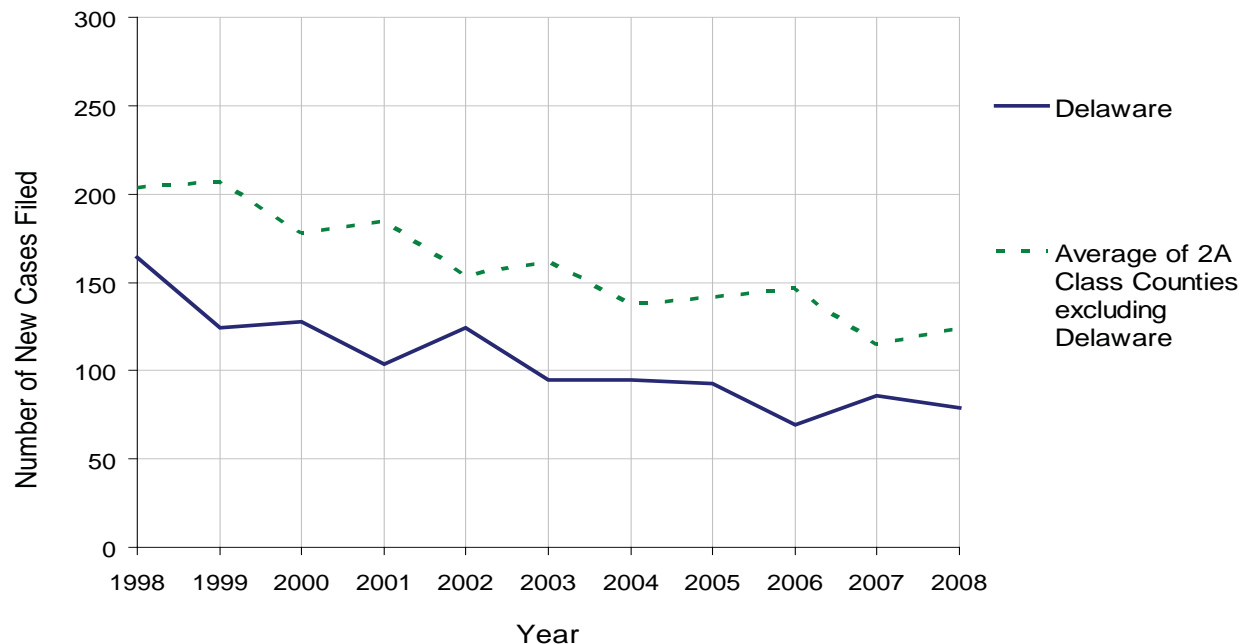
Class of County: 2A

No. of Common Pleas Court Judgeships: 19



2008 Accounts	No. of Accounts	%
Cases Pending 1/1/08	172	
New Cases Filed in '08	79	
Cases Available for Processing	251	
Processed By:		
Contested before a Judge	13	16.5%
Contested before a Non-judicial Officer	0	0.0%
Uncontested	65	82.3%
Other	1	1.3%
Cases Processed	79	100.0%
Cases Pending 12/31/08	172	

Accounts New Cases Filed, 1998-2008

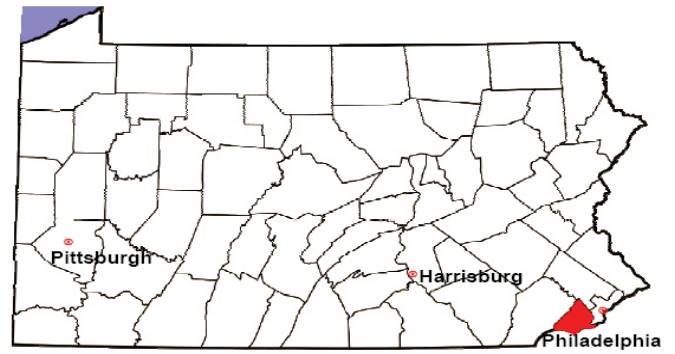


DELAWARE COUNTY

2008 Population Estimate: 553,619

Class of County: 2A

No. of Common Pleas Court Judgeships: 19



2008 Adoptions		No. of Cases	%
Cases Pending 1/1/08		59	
New Cases Filed in '08		156	
Total Cases Available for Processing		215	
Processed By:			
Contested before a Judge	Granted	0	0.0%
	Denied	0	0.0%
Uncontested	Granted	153	97.5%
	Denied	0	0.0%
Other		4	2.5%
Total Cases Processed		157	100.0%
Cases Pending 12/31/08		58	

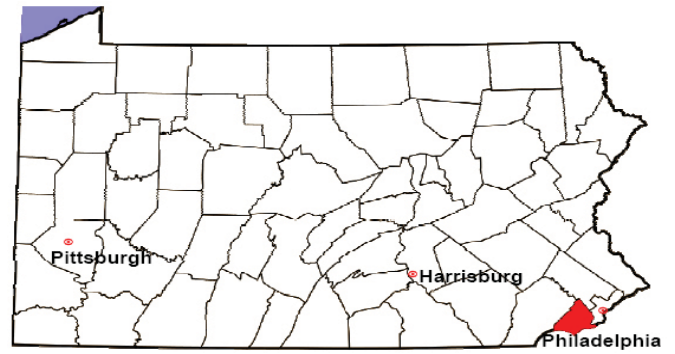
Note: Prior to 2008, each petition was counted as one new case, regardless of the number of children listed on the petition. Starting in 2008, each child listed on a petition is counted as a separate case. Therefore, statistics for 2008 should not be compared with those for previous years.

DELAWARE COUNTY

2008 Population Estimate: 553,619

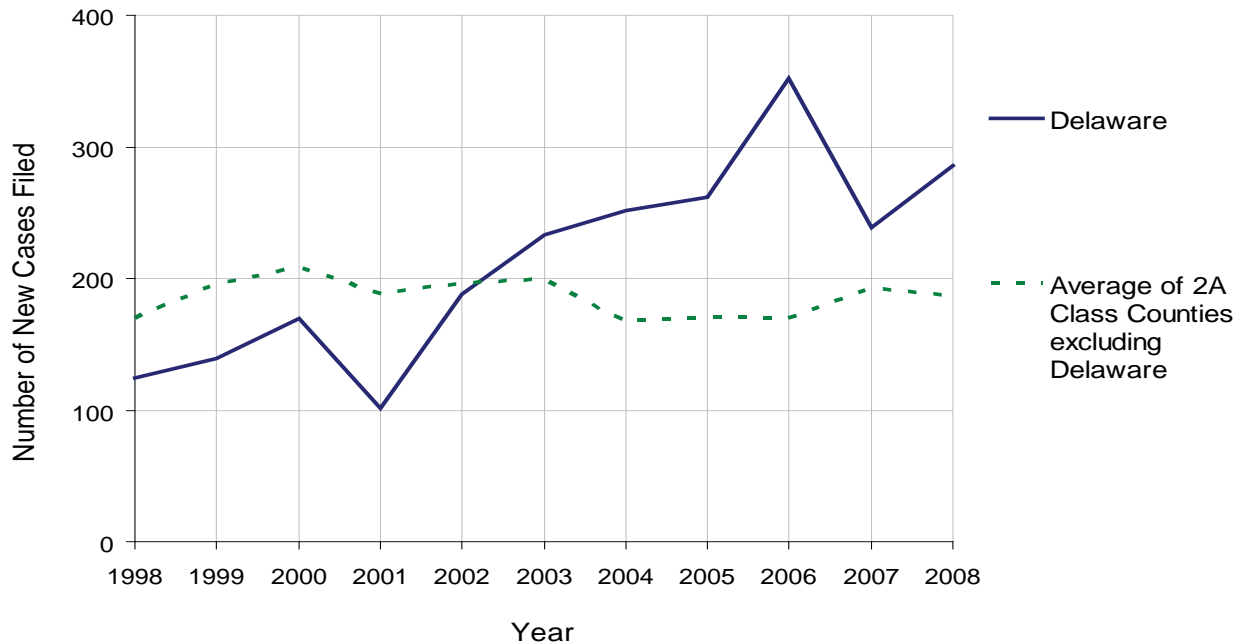
Class of County: 2A

No. of Common Pleas Court Judgeships: 19



2008 Relinquishments/Terminations	No. of Petitions	%
Cases Pending 1/1/08	159	
New Cases Filed in '08	286	
Cases Available for Processing	445	
Processed By:		
Contested before a Judge	36	15.1%
Uncontested	193	81.1%
Other	9	3.8%
Cases Processed	238	100.0%
Cases Pending 12/31/08	207	

Relinquishments/Terminations New Cases Filed, 1998-2008

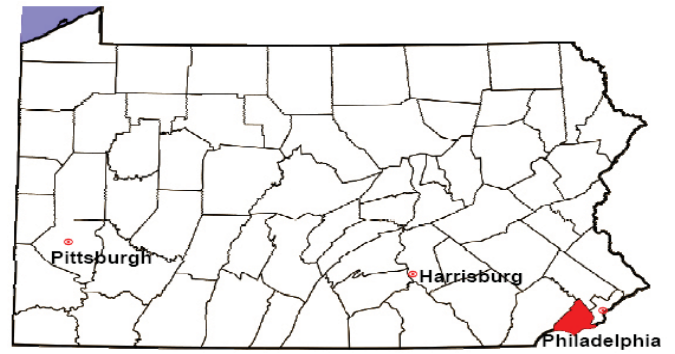


DELAWARE COUNTY

2008 Population Estimate: 553,619

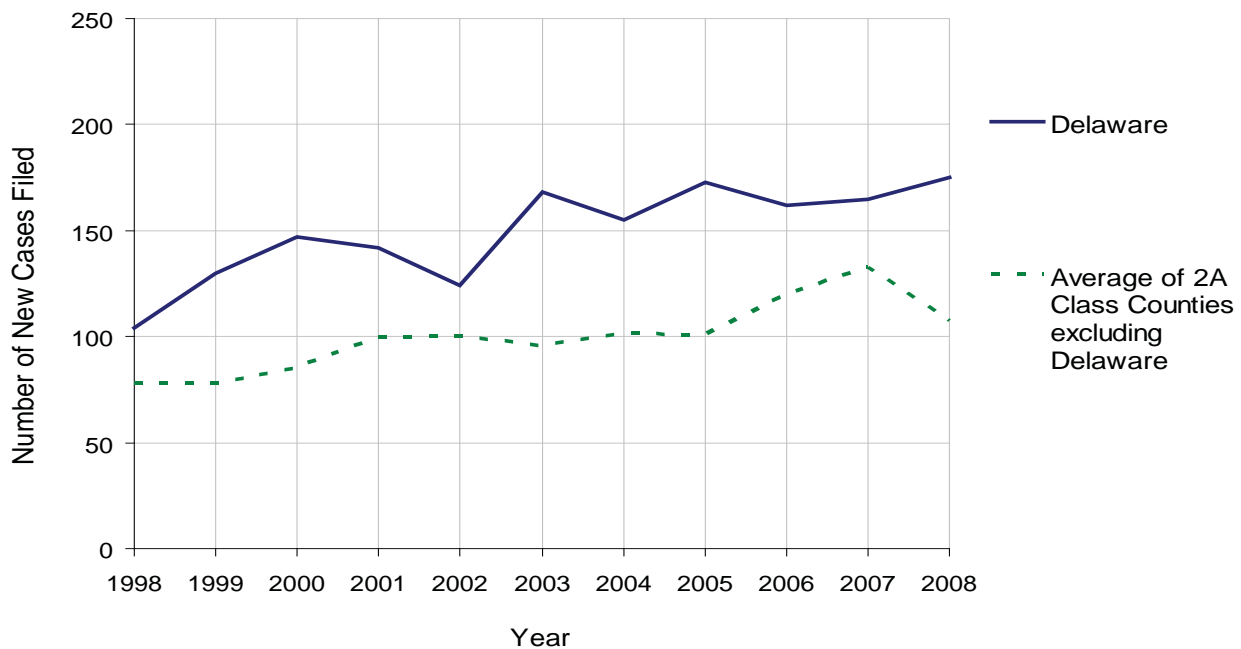
Class of County: 2A

No. of Common Pleas Court Judgeships: 19



2008 Appointment of Guardians	No. of Petitions	%
Cases Pending 1/1/08	98	
New Cases Filed in '08	175	
Cases Available for Processing	273	
Processed By:		
Contested before a Judge	9	4.9%
Uncontested	151	82.5%
Other	23	12.6%
Cases Processed	183	100.0%
Cases Pending 12/31/08	90	

Appointment of Guardians New Cases Filed, 1998-2008

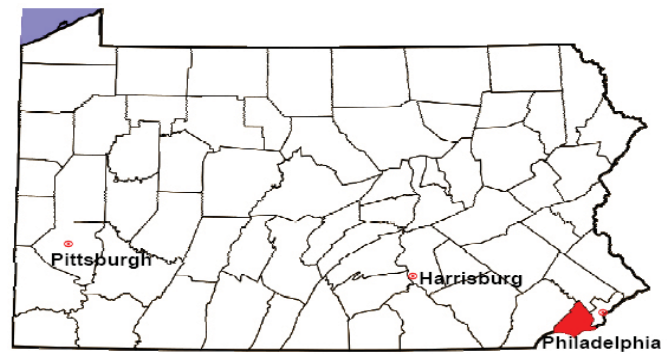


DELAWARE COUNTY

2008 Population Estimate: 553,619

Class of County: 2A

No. of Common Pleas Court Judgeships: 19



2008 Jury Activity & Performance Measures

A. Juror Days	15,945
B. Number Sent to Voir Dire	9,419
Voir Dire Attendance Rate $(B/A * 100)$	59.1%
C. Number of Voir Dires Started	181
Juror Days Per Voir Dire Starts (A/C)	88
D. Number of Jurors Selected	2,258
Juror Selection Rate $(D/B * 100)$	24.0%
E. Number of Jury Trials Started	178
Juror Days Per Trial Starts (A/E)	90
Number of Voir Dires Not Resulting in Trial $(C-E)$	3
Percent Voir Dires Not Resulting in Trial $(C-E)/C * 100$	1.7%
F. Pool Days	148
G. Zero Panel Days	35
Percent Zero Panel Days $(G/F * 100)$	23.6%
H. Total Juror Fees Incurred	\$298,734
Average Juror Fees Per Trial (H/E)	\$1,678

Average Juror Fees Per Trial, 1998-2008

