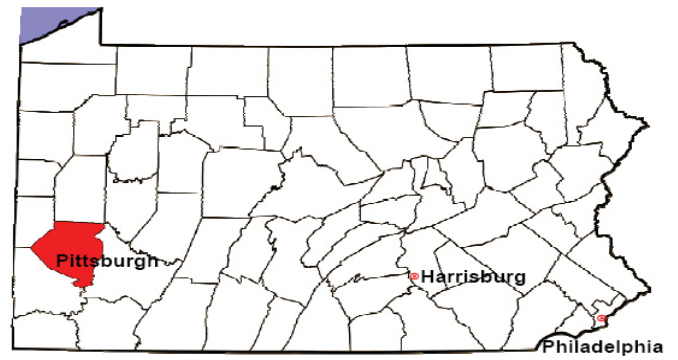


# ALLEGHENY COUNTY

2008 Population Estimate: 1,215,103

Class of County: 2nd

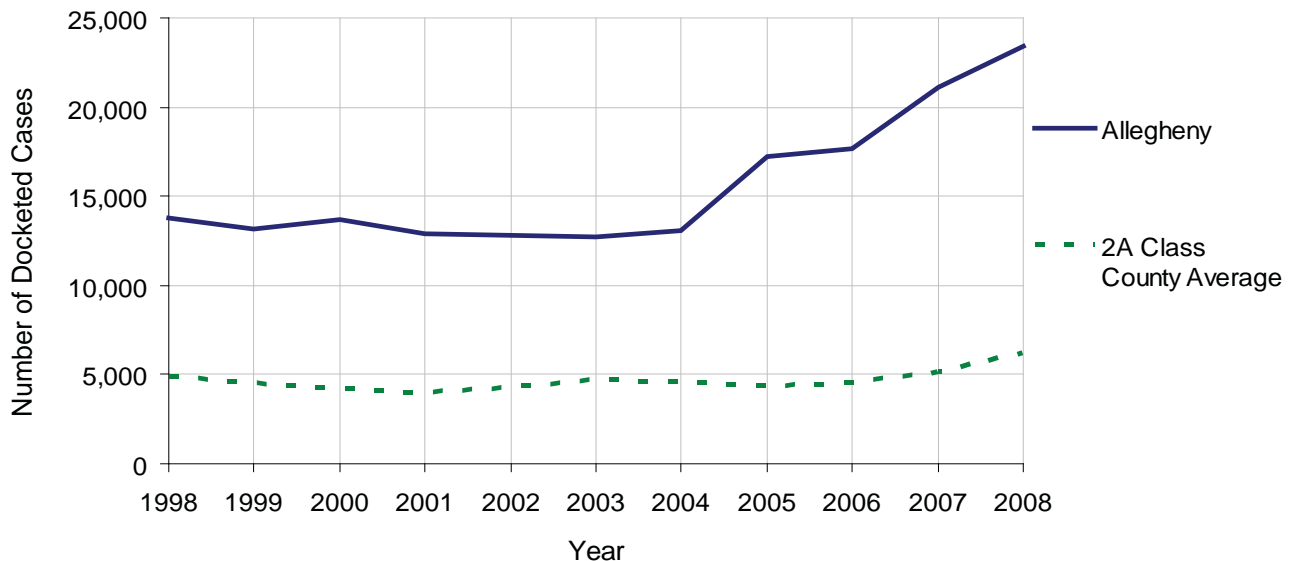
No. of Common Pleas Court Judgeships: 43



2008 Civil	Civil Action		
Docketed Cases	23,411		
Arbitrated Cases	3,360		
Trial-Ready Cases:	Civil Action	Other	Total
Cases Pending 1/1/08	3,658	2,686	6,344
Became Trial Ready in '08	7,702	6,740	14,442
Restored to Trial List	3	0	3
Appeals from Arbitration	415	371	786
<b>Cases Available for Trial</b>	<b>11,778</b>	<b>9,797</b>	<b>21,575</b>
Disposed By:			
Settlement	7,443	6,738	14,181
Non-Jury Trial	105	144	249
Jury Trial	121	3	124
Stricken from Trial List	0	6	6
Other	321	26	347
<b>Cases Disposed</b>	<b>7,990</b>	<b>6,917</b>	<b>14,907</b>
<b>Cases Pending 12/31/08</b>	<b>3,788</b>	<b>2,880</b>	<b>6,668</b>

Age of Trial-Ready Cases as of 12/31/08 (Civil Action Only)		
0-6 months	468	12%
7-12 months	351	9%
13-18 months	166	4%
19-24 months	171	5%
25-30 months	134	4%
31-36 months	206	5%
Over 36 months	2,292	61%
<b>Total</b>	<b>3,788</b>	<b>100%</b>

Docketed Cases, 1998-2008

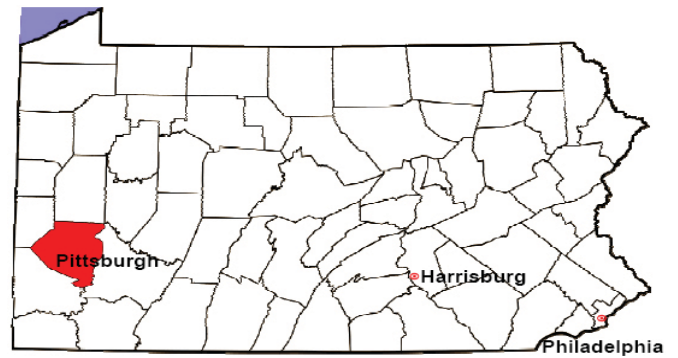


# ALLEGHENY COUNTY

2008 Population Estimate: 1,215,103

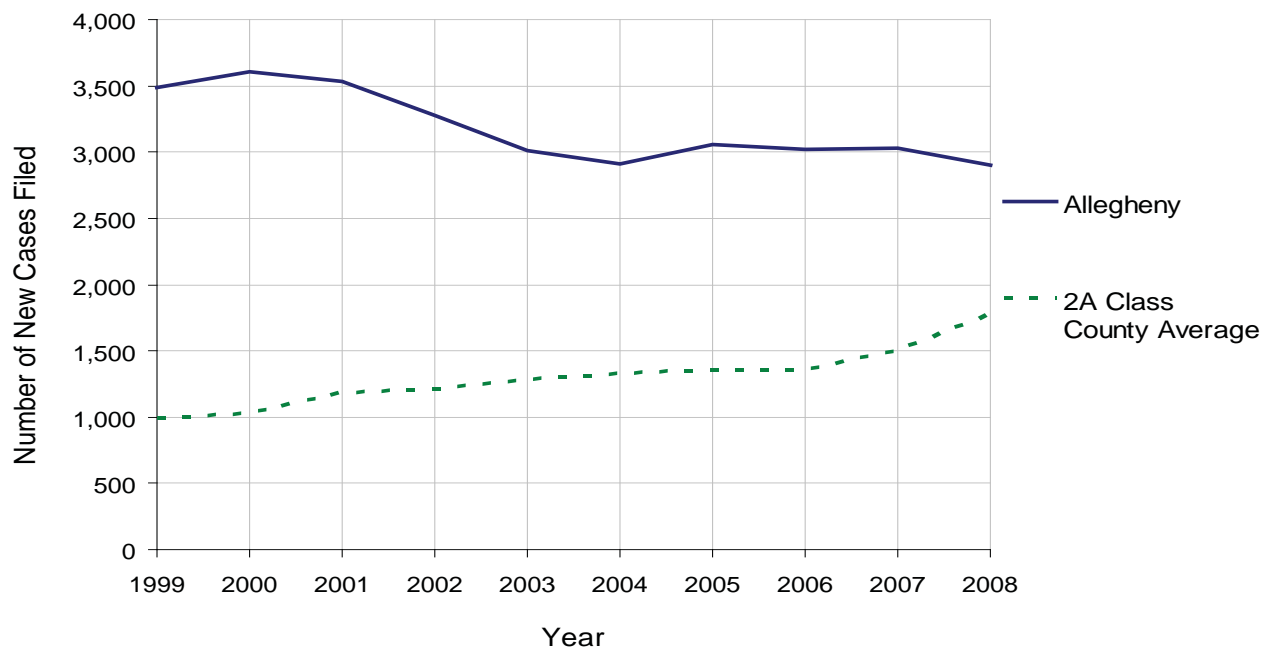
Class of County: 2nd

No. of Common Pleas Court Judgeships: 43



<b>2008 Protection From Abuse</b>	No. of Petitions	%
Cases Pending 1/1/08	76	
New Cases Filed in '08	2,902	
<b>Cases Available for Processing</b>	<b>2,978</b>	
Processed By:		
Final Order After Hearing	497	17.0%
Final Order by Stipulation or Agreement	668	22.8%
Dismissal	541	18.5%
Withdrawal	1,221	41.7%
Other	2	0.1%
<b>Cases Processed</b>	<b>2,929</b>	<b>100.0%</b>
<b>Cases Pending 12/31/08</b>	<b>49</b>	

PFA New Cases Filed, 1999-2008

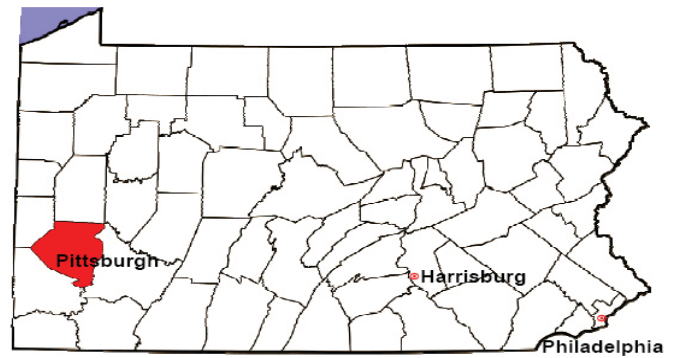


# ALLEGHENY COUNTY

2008 Population Estimate: 1,215,103

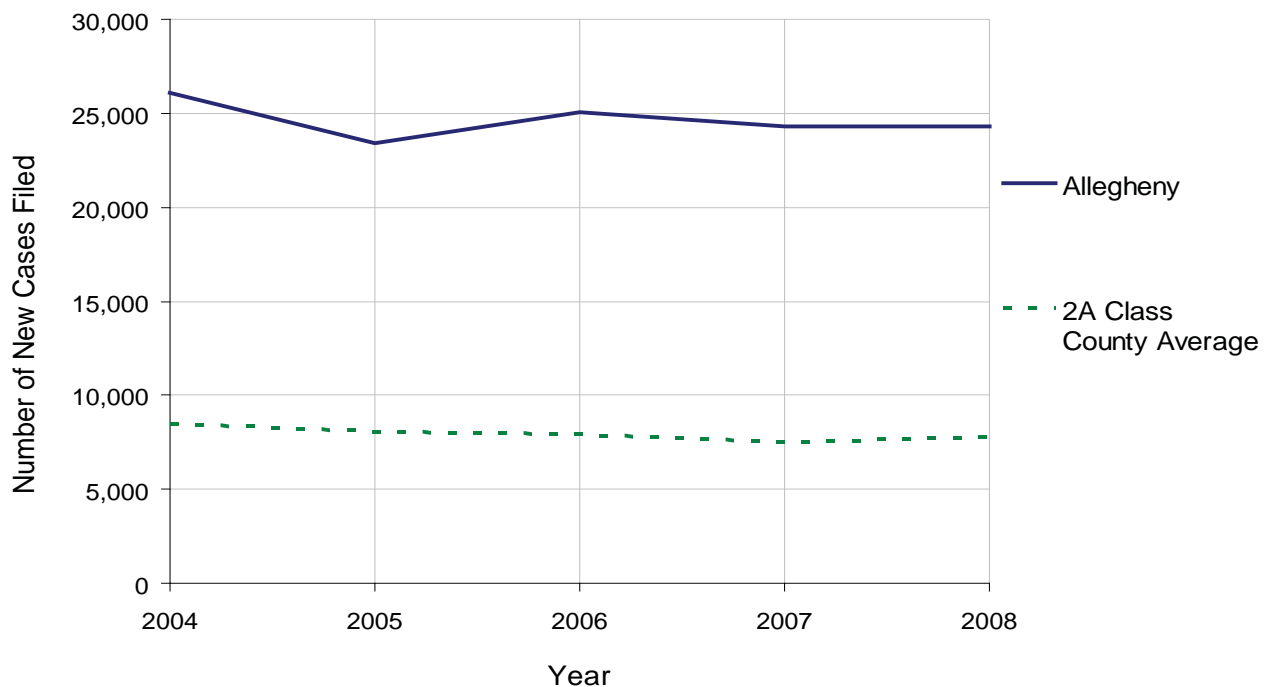
Class of County: 2nd

No. of Common Pleas Court Judgeships: 43



<b>2008 Spousal &amp; Child Support</b>	No. of Petitions	%
Cases Pending 1/1/08	14,779	
New Cases Filed in '08	24,293	
Dockets Transferred In (+)	127	
Dockets Transferred Out (-)	258	
<b>Cases Available for Processing</b>	<b>38,941</b>	
Processed By:		
Judge	162	0.6%
Intake Officer	22,020	77.4%
Hearing Officer	6,238	21.9%
Other	13	0.0%
<b>Cases Processed</b>	<b>28,433</b>	<b>100.0%</b>
<b>Cases Pending 12/31/08</b>	<b>10,508</b>	

Spousal & Child Support New Cases Filed, 1998-2008

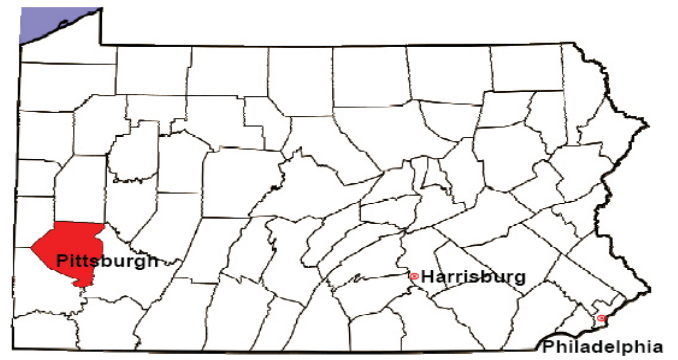


# ALLEGHENY COUNTY

2008 Population Estimate: 1,215,103

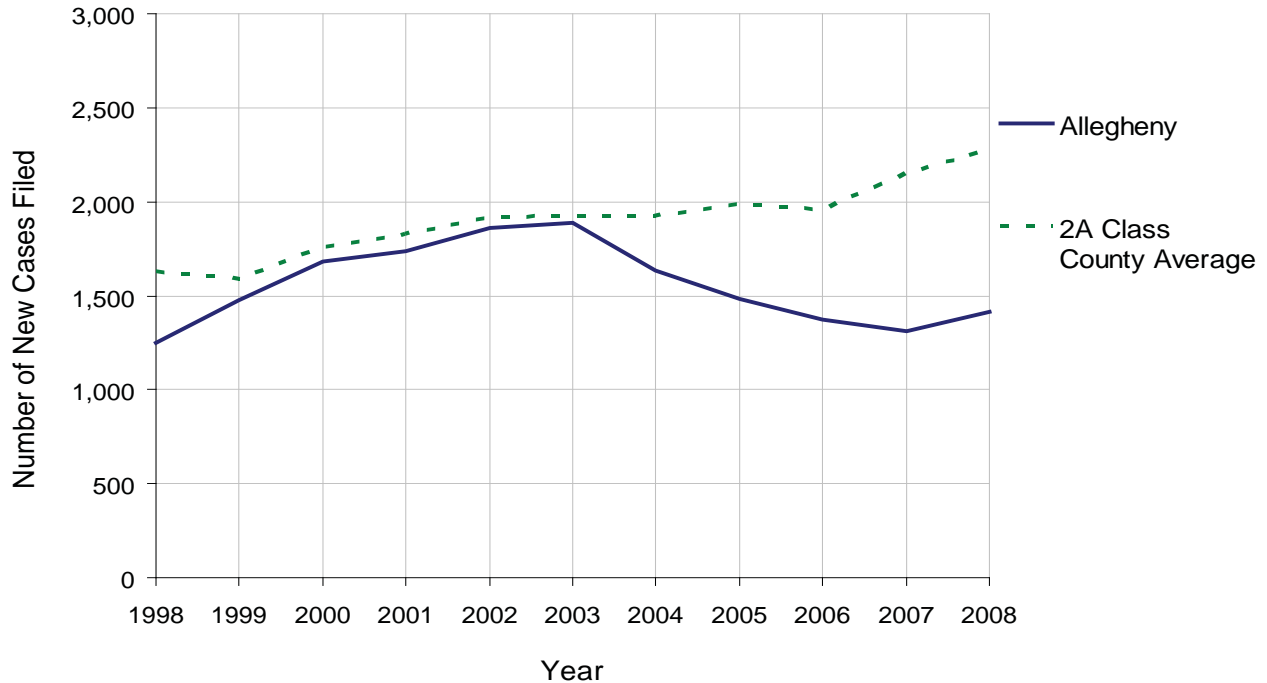
Class of County: 2nd

No. of Common Pleas Court Judgeships: 43



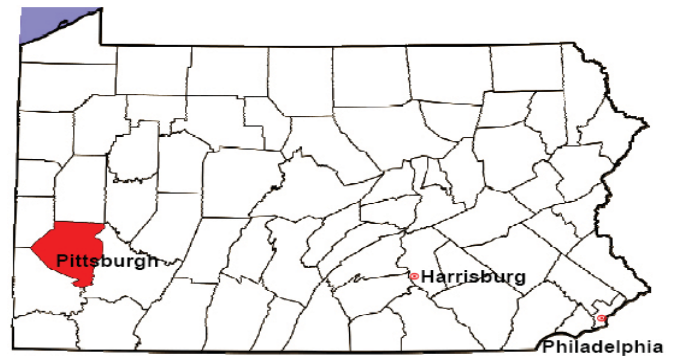
<b>2008 Custody/Partial Custody/Visitation</b>	No. of Petitions	%
Cases Pending 1/1/08	3	
New Cases Filed in '08	1,412	
<b>Cases Available for Processing</b>	<b>1,415</b>	
Processed By:		
Judge	445	33.7%
<b>Non-Judicial Officer</b>	<b>866</b>	<b>65.6%</b>
Other	9	0.7%
<b>Cases Processed</b>	<b>1,320</b>	<b>100.0%</b>
<b>Cases Pending 12/31/08</b>	<b>95</b>	

Custody/Partial Custody/Visitation New Cases Filed  
1998-2008



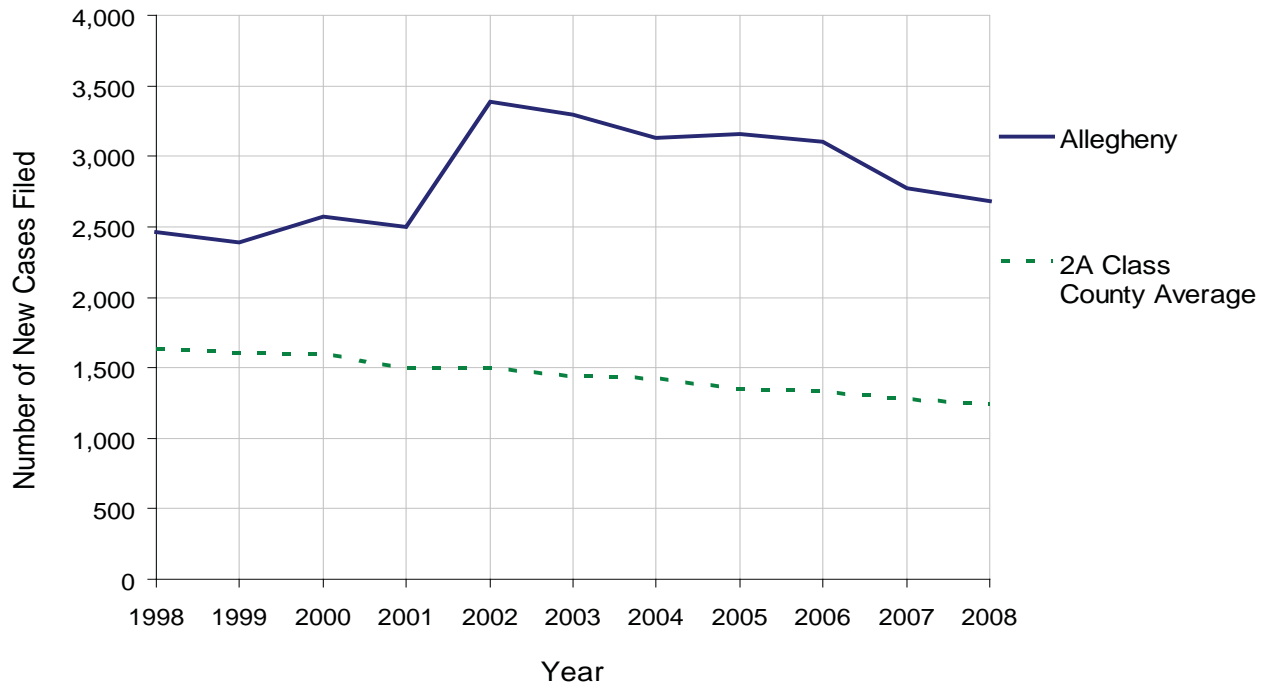
# ALLEGHENY COUNTY

2008 Population Estimate: 1,215,103  
 Class of County: 2nd  
 No. of Common Pleas Court Judgeships: 43



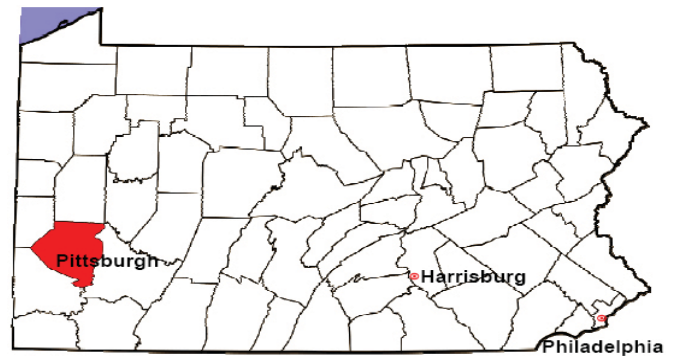
<b>2008 Divorce</b>	No. of Petitions	%
Cases Pending 1/1/08	4,425	
New Cases Filed in '08	2,682	
<b>Cases Available for Processing</b>	<b>7,107</b>	
Processed By:		
Contested Before a Judge	583	21.7%
Contested Before a Master	49	1.8%
Uncontested	2,026	75.5%
Other	24	0.9%
<b>Cases Processed</b>	<b>2,682</b>	<b>100.0%</b>
<b>Cases Pending 12/31/08</b>	<b>4,425</b>	

Divorce New Cases Filed, 1998-2008



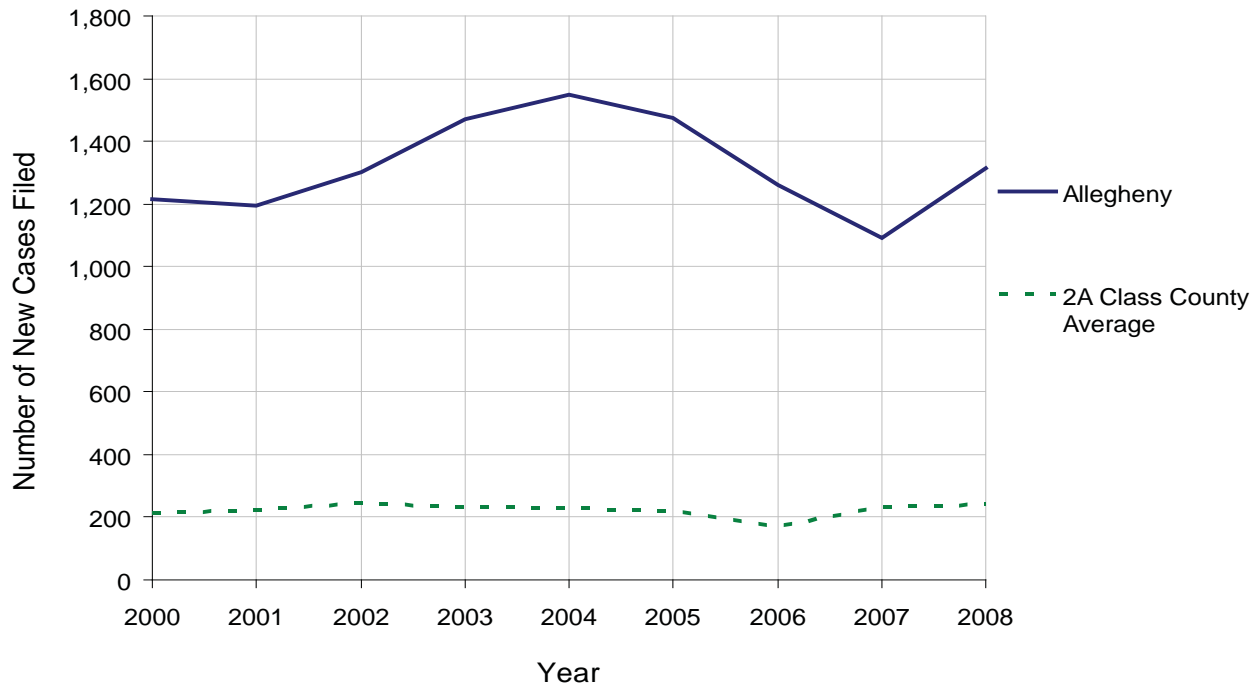
# ALLEGHENY COUNTY

2008 Population Estimate: 1,215,103  
 Class of County: 2nd  
 No. of Common Pleas Court Judgeships: 43



<b>2008 Juvenile Dependency Abuse/Neglect</b>	No. of Petitions	%
Cases Pending 1/1/08	1,907	
New Cases Filed in '08	1,316	
<b>Cases Available for Processing</b>	<b>3,223</b>	
Processed By:		
Judge	970	99.0%
Non-Judicial Officer	14	1.0%
Other	0	0.0%
<b>Cases Processed</b>	<b>984</b>	<b>100.0%</b>
<b>Cases Pending 12/31/08</b>	<b>2,239</b>	

Abuse/Neglect New Cases Filed, 2000-2008

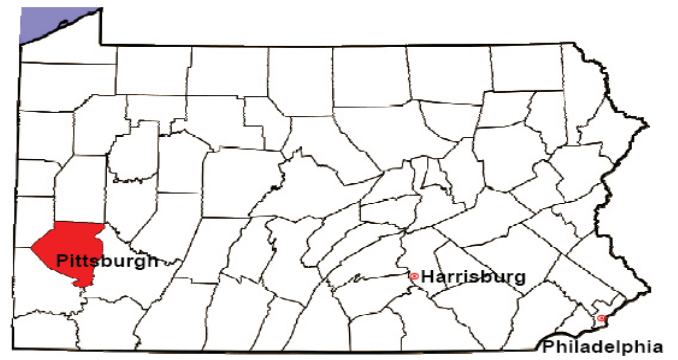


# ALLEGHENY COUNTY

2008 Population Estimate: 1,215,103

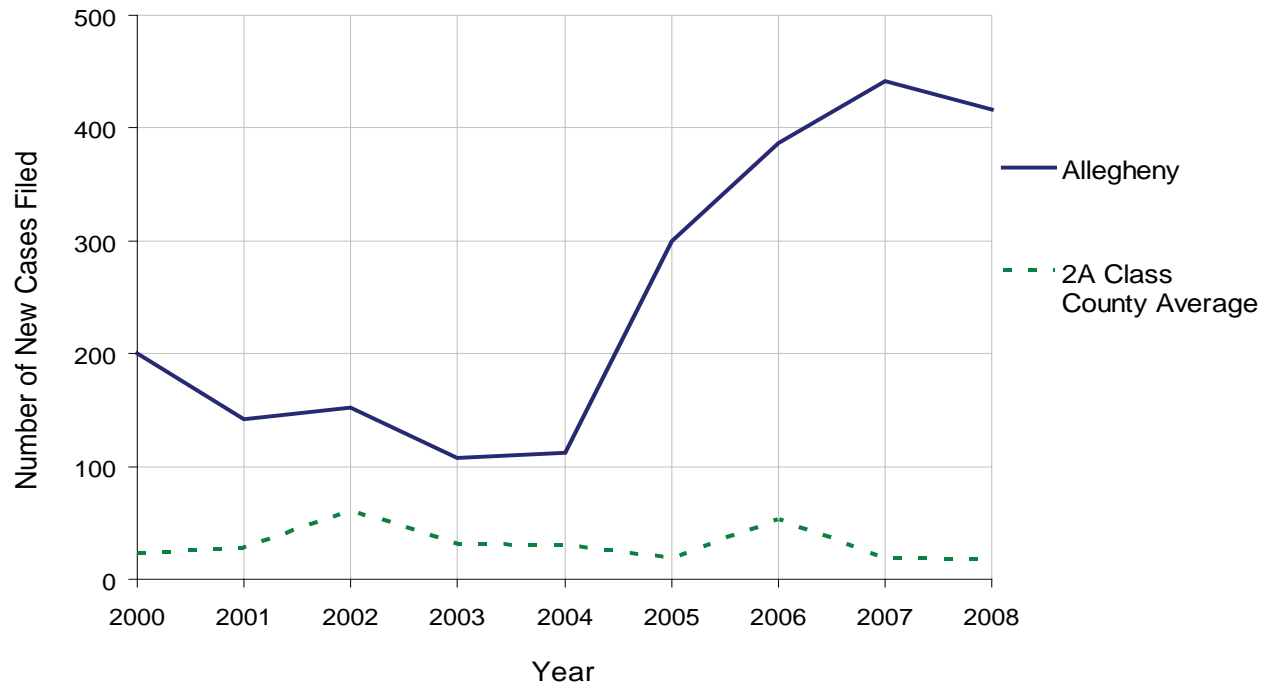
Class of County: 2nd

No. of Common Pleas Court Judgeships: 43



<b>2008 Juvenile Dependency Status Offenses</b>	No. of Petitions	%
Cases Pending 1/1/08	371	
New Cases Filed in '08	416	
<b>Cases Available for Processing</b>	<b>787</b>	
Processed By:		
Judge	299	71.9%
Non-Judicial Officer	117	28.1%
Other	0	0.0%
<b>Cases Processed</b>	<b>416</b>	<b>100.0%</b>
<b>Cases Pending 12/31/08</b>	<b>371</b>	

Status Offenses New Cases Filed, 2000-2008

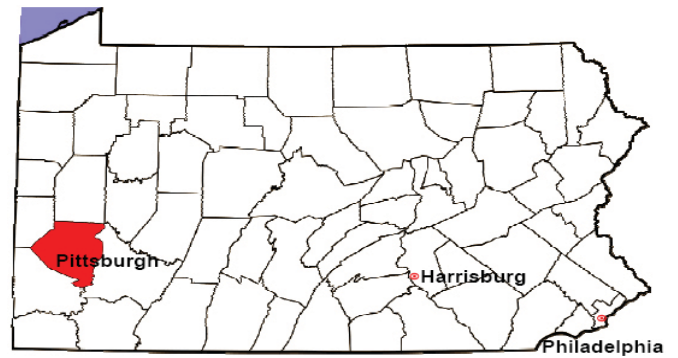


# ALLEGHENY COUNTY

2008 Population Estimate: 1,215,103

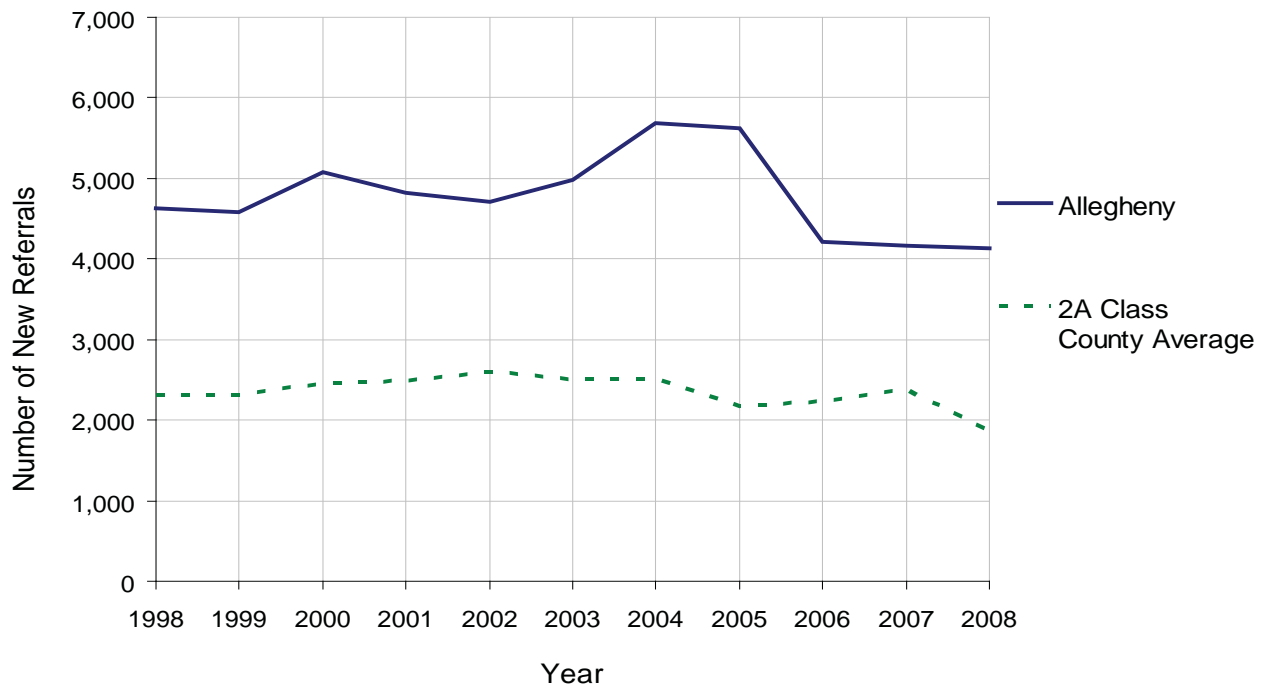
Class of County: 2nd

No. of Common Pleas Court Judgeships: 43



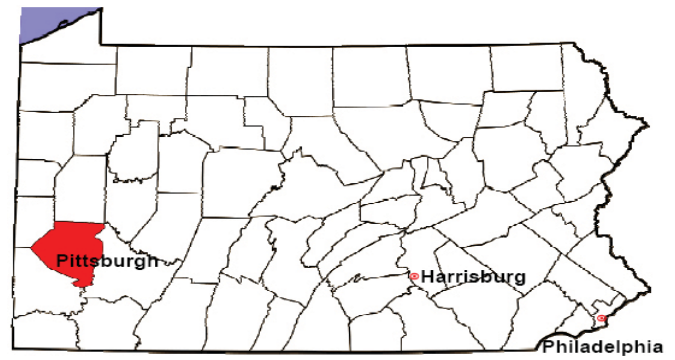
<b>2008 Juvenile Delinquency</b>	No. of Referrals	%
Cases Pending 1/1/08	1,768	
New Referrals in '08	4,138	
<b>Cases Available for Processing</b>	<b>5,906</b>	
Processed By:		
Judge	2,905	69.6%
Non-Judicial Officer	1,240	29.7%
Other	31	0.7%
<b>Cases Processed</b>	<b>4,176</b>	<b>100.0%</b>
<b>Cases Pending 12/31/08</b>	<b>1,730</b>	

Juvenile Delinquency New Referrals, 1998-2008



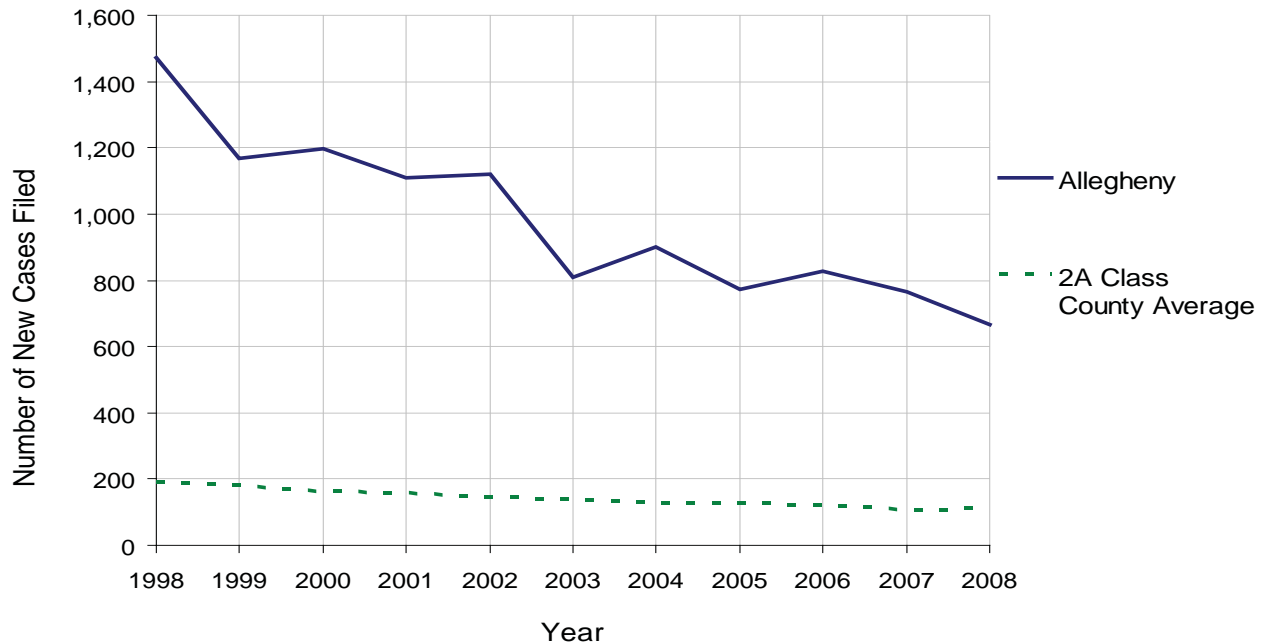
# ALLEGHENY COUNTY

2008 Population Estimate: 1,215,103  
 Class of County: 2nd  
 No. of Common Pleas Court Judgeships: 43



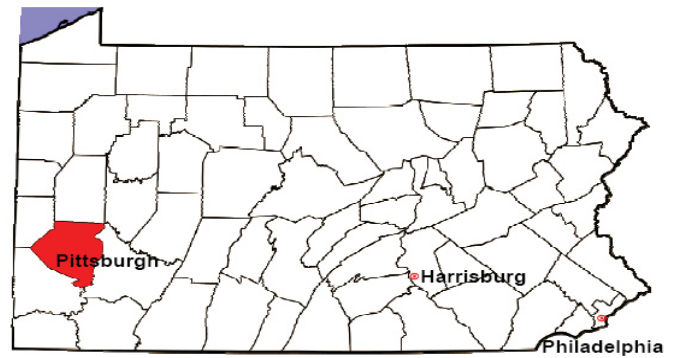
2008 Accounts	No. of Accounts	%
Cases Pending 1/1/08	23	
New Cases Filed in '08	665	
<b>Cases Available for Processing</b>	<b>688</b>	
Processed By:		
Contested before a Judge	0	0.0%
Contested before a Non-Judicial Officer	0	0.0%
Uncontested	603	100.0%
Other	0	0.0%
<b>Cases Processed</b>	<b>603</b>	<b>100.0%</b>
<b>Cases Pending 12/31/08</b>	<b>85</b>	

Accounts New Cases Filed, 1998-2008



# ALLEGHENY COUNTY

2008 Population Estimate: 1,215,103  
 Class of County: 2nd  
 No. of Common Pleas Court Judgeships: 43

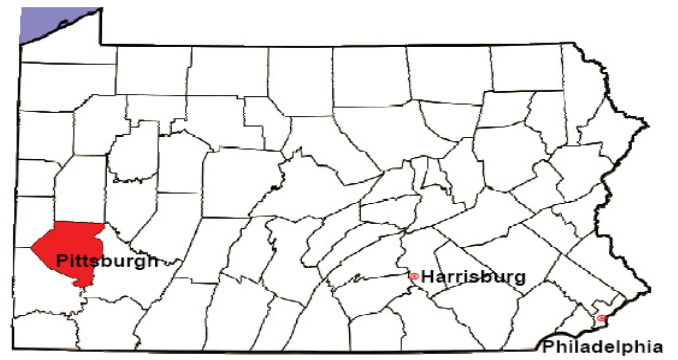


<b>2008 Adoptions</b>		No. of Cases	%
Cases Pending 1/1/08		132	
New Cases Filed in '08		429	
<b>Cases Available for Processing</b>		<b>561</b>	
Processed By:			
Contested before a Judge	Granted	0	0.0%
	Denied	0	0.0%
Uncontested	Granted	421	88.6%
	Denied	0	0.0%
Other		54	11.4%
<b>Cases Processed</b>		<b>475</b>	<b>100.0%</b>
<b>Cases Pending 12/31/08</b>		<b>86</b>	

Note: Prior to 2008, each petition was counted as one new case, regardless of the number of children listed on the petition. Starting in 2008, each child listed on a petition is counted as a separate case. Therefore, statistics for 2008 should not be compared with those for previous years.

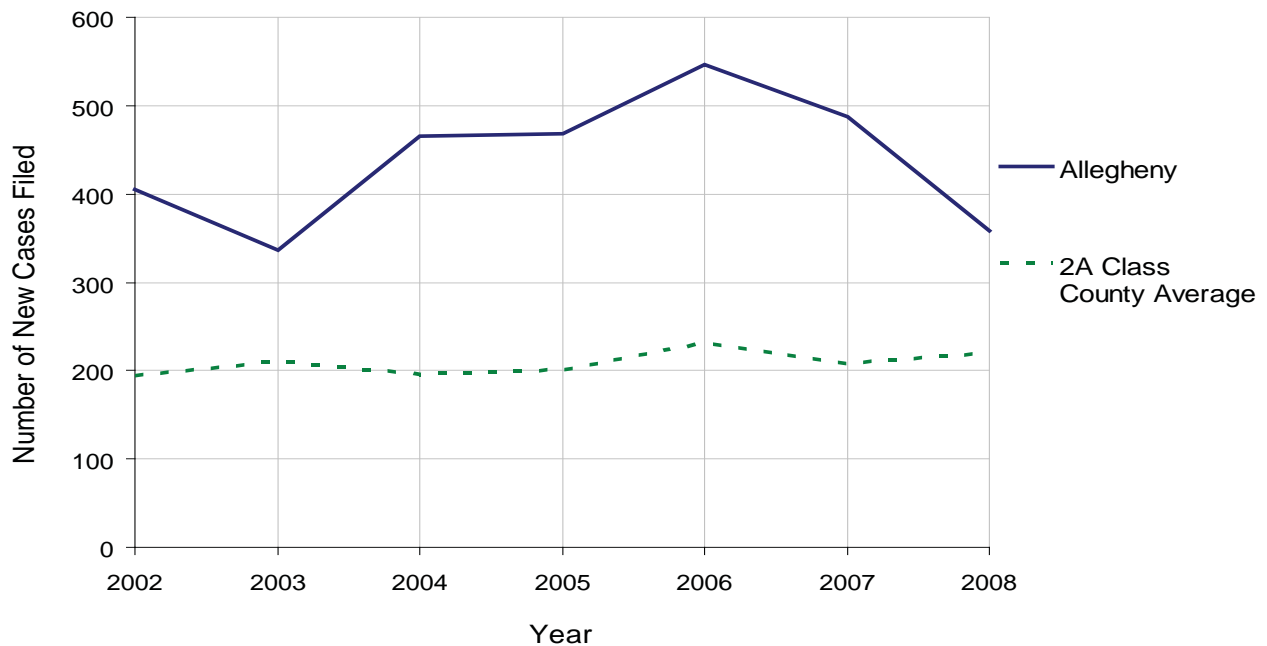
# ALLEGHENY COUNTY

2008 Population Estimate: 1,215,103  
 Class of County: 2nd  
 No. of Common Pleas Court Judgeships: 43



<b>2008 Relinquishments/Terminations</b>	No. of Petitions	%
Cases Pending 1/1/08	245	
New Cases Filed in '08	359	
<b>Cases Available for Processing</b>	<b>604</b>	
Processed By:		
Contested before a Judge	98	23.6%
Uncontested	235	56.5%
Other	83	20.0%
<b>Cases Processed</b>	<b>416</b>	<b>100.0%</b>
<b>Cases Pending 12/31/08</b>	<b>188</b>	

Relinquishments/Terminations New Cases Filed, 2002-2008

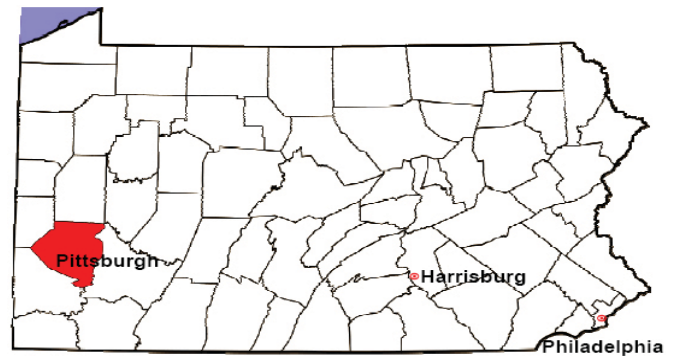


# ALLEGHENY COUNTY

2008 Population Estimate: 1,215,103

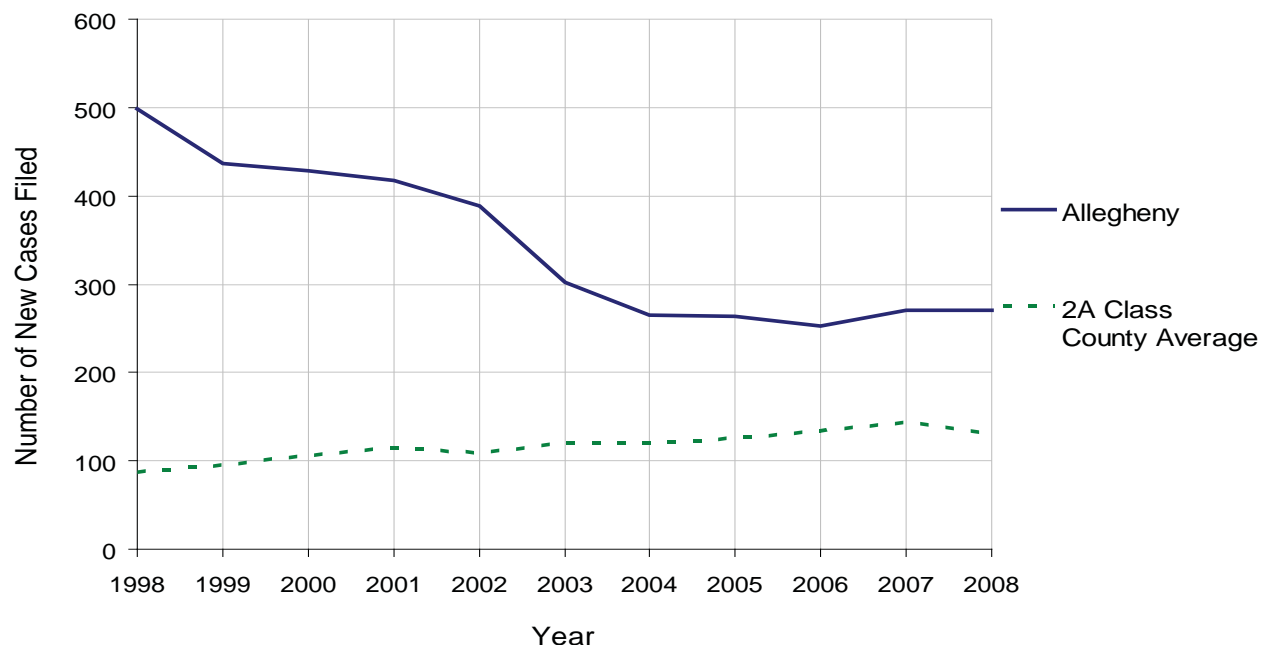
Class of County: 2nd

No. of Common Pleas Court Judgeships: 43



<b>2008 Appointment of Guardians</b>	No. of Petitions	%
Cases Pending 1/1/08	29	
New Cases Filed in '08	270	
<b>Cases Available for Processing</b>	<b>299</b>	
Processed By:		
Contested before a Judge	24	8.3%
Uncontested	264	91.7%
Other	0	0.0%
<b>Cases Processed</b>	<b>288</b>	<b>100.0%</b>
<b>Cases Pending 12/31/08</b>	<b>11</b>	

Appointment of Guardians New Cases Filed, 1998-2008

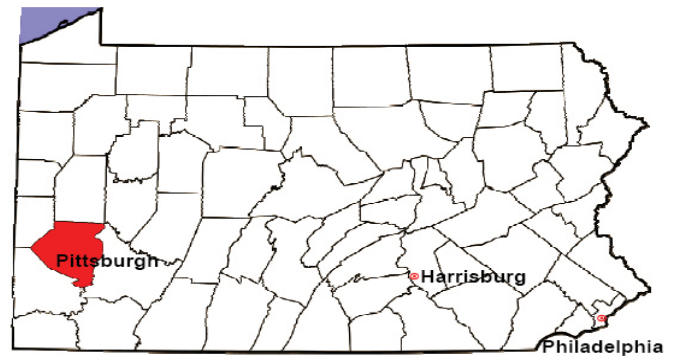


# ALLEGHENY COUNTY

2008 Population Estimate: 1,215,103

Class of County: 2nd

No. of Common Pleas Court Judgeships: 43



2008 Jury Activity & Performance Measures		
A. Juror Days	22,756	
B. Number Sent to Voir Dire	16,288	
Voir Dire Attendance Rate $(B/A * 100)$		71.6%
C. Number of Voir Dires Started	540	
Juror Days Per Voir Dire Starts $(A/C)$		42
D. Number of Jurors Selected	5,551	
Juror Selection Rate $(D/B * 100)$		34.1%
E. Number of Jury Trials Started	412	
Juror Days Per Trial Starts $(A/E)$		55
Number of Voir Dires Not Resulting in Trial $(C-E)$		128
Percent Voir Dires Not Resulting in Trial $(C-E)/C * 100$		23.7%
F. Pool Days	226	
G. Zero Panel Days	29	
Percent Zero Panel Days $(G/F * 100)$		12.8%
H. Total Juror Fees Incurred	\$471,857	
Average Juror Fees Per Trial $(H/E)$		\$1,145

Average Juror Fees Per Trial, 1998-2008

