

# BUCKS COUNTY

2008 Population Estimate: 621,643

Class of County: 2A

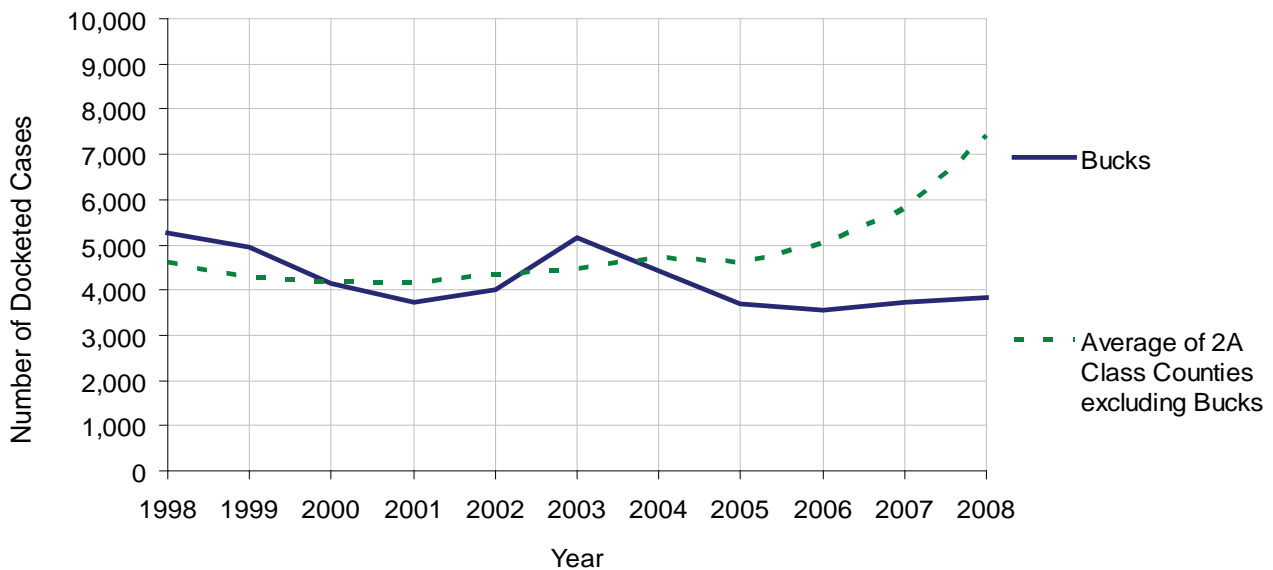
No. of Common Pleas Court Judgeships: 13



2008 Civil		Civil Action		
Docketed Cases		3,820		
Arbitrated Cases		397		
Trial-Ready Cases:		<b>Civil Action</b>	<b>Other</b>	<b>Total</b>
Cases Pending 1/1/08		95	1	96
Became Trial Ready in '08		460	4	464
Restored to Trial List		2	0	2
Appeals from Arbitration		118	0	118
<b>Cases Available for Trial</b>		<b>675</b>	<b>5</b>	<b>680</b>
Disposed By:				
Settlement		204	2	206
Non-Jury Trial		76	1	77
Jury Trial		51	0	51
Stricken from Trial List		96	0	96
Other		0	0	0
<b>Total Cases Disposed</b>		<b>427</b>	<b>3</b>	<b>430</b>
<b>Cases Pending 12/31/08</b>		<b>248</b>	<b>2</b>	<b>250</b>

Age of Trial-Ready Cases as of 12/31/08 (Civil Action Only)		
0-6 months	109	44%
7-12 months	77	31%
13-18 months	58	23%
19-24 months	4	2%
25-30 months	0	0%
31-36 months	0	0%
Over 36 months	0	0%
<b>Total</b>	<b>248</b>	<b>100%</b>

Docketed Cases, 1998-2008



# BUCKS COUNTY

2008 Population Estimate: 621,643

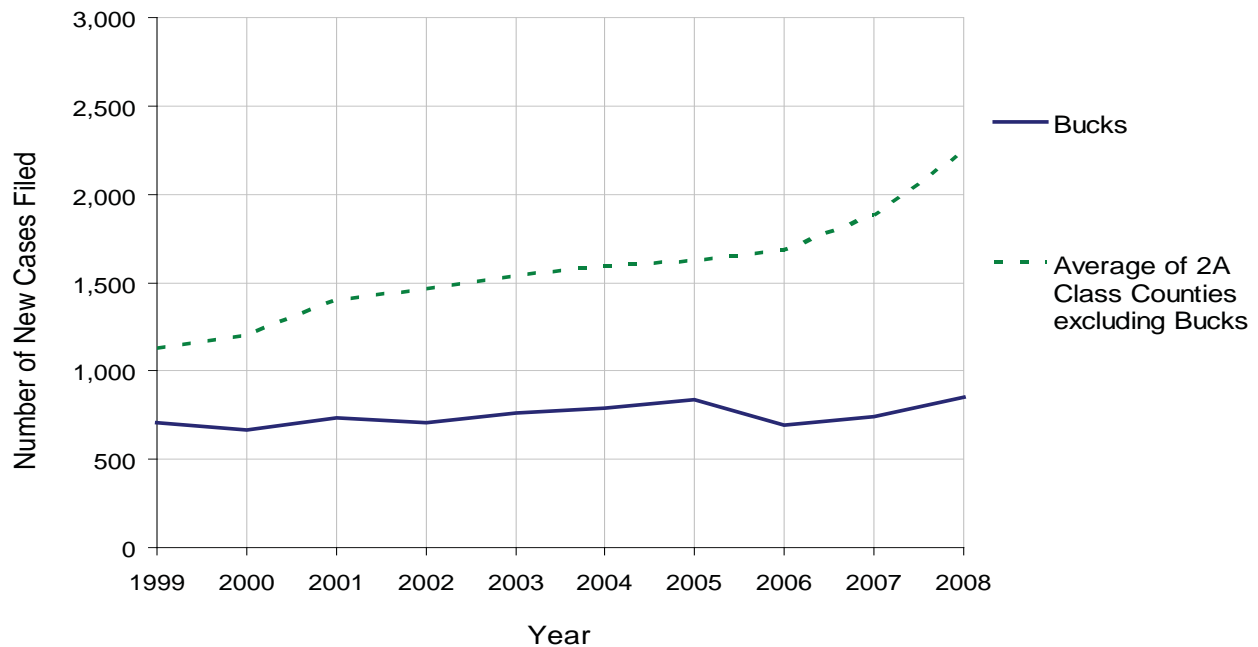
Class of County: 2A

No. of Common Pleas Court Judgeships: 13



<b>2008 Protection From Abuse</b>	No. of Petitions	%
Cases Pending 1/1/08	103	
New Cases Filed in '08	851	
<b>Cases Available for Processing</b>	<b>954</b>	
Processed By:		
Final Order After Hearing	179	23.6%
Final Order by Stipulation or Agreement	291	38.4%
Dismissal	137	18.1%
Withdrawal	151	19.9%
Other	0	0.0%
<b>Cases Processed</b>	<b>758</b>	<b>100.0%</b>
<b>Cases Pending 12/31/08</b>	<b>196</b>	

PFA New Cases Filed, 1999-2008



# BUCKS COUNTY

2008 Population Estimate: 621,643

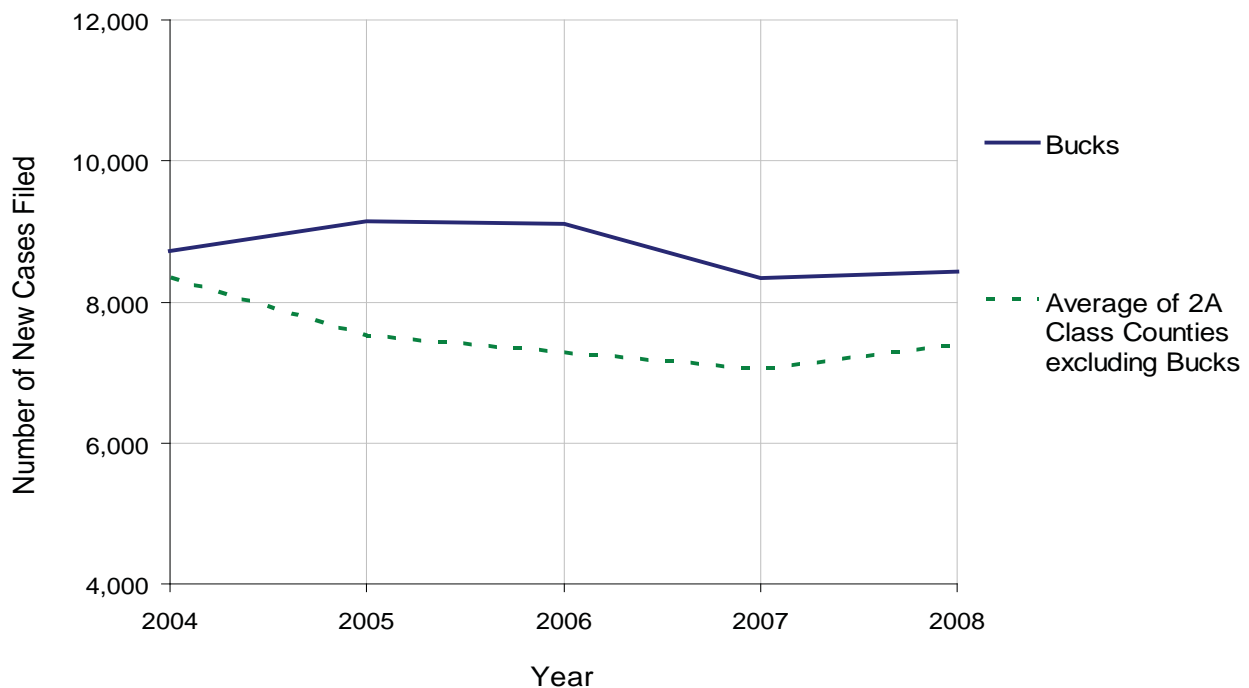
Class of County: 2A

No. of Common Pleas Court Judgeships: 13



<b>2008 Spousal &amp; Child Support</b>	No. of Petitions	%
Cases Pending 1/1/08	1,822	
New Cases Filed in '08	8,438	
Dockets Transferred In (+)	74	
Dockets Transferred Out (-)	213	
<b>Cases Available for Processing</b>	<b>10,121</b>	
Processed By:		
Judge	1,220	14.5%
Intake Officer	7,219	85.5%
Hearing Officer	0	0.0%
Other	0	0.0%
<b>Cases Processed</b>	<b>8,439</b>	<b>100.0%</b>
<b>Cases Pending 12/31/08</b>	<b>1,682</b>	

Spousal & Child Support New Cases Filed, 1998-2008



# BUCKS COUNTY

2008 Population Estimate: 621,643

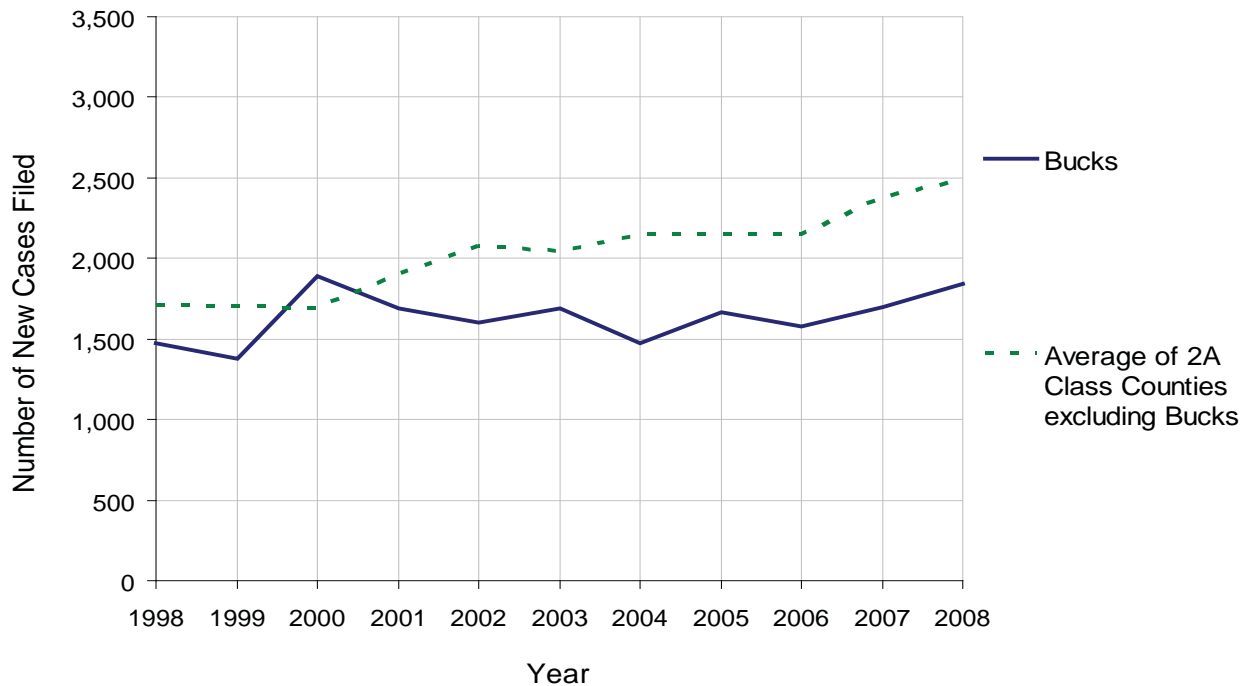
Class of County: 2A

No. of Common Pleas Court Judgeships: 13



<b>2008 Custody/Partial Custody/Visitation</b>	No. of Petitions	%
Cases Pending 1/1/08	240	
New Cases Filed in '08	1,844	
<b>Cases Available for Processing</b>	<b>2,084</b>	
Processed By:		
Judge	642	34.5%
Non-Judicial Officer	746	40.1%
Other	474	25.5%
<b>Cases Processed</b>	<b>1,862</b>	<b>100.0%</b>
<b>Cases Pending 12/31/08</b>	<b>222</b>	

Custody/Partial Custody/Visitation New Cases Filed  
1998-2008

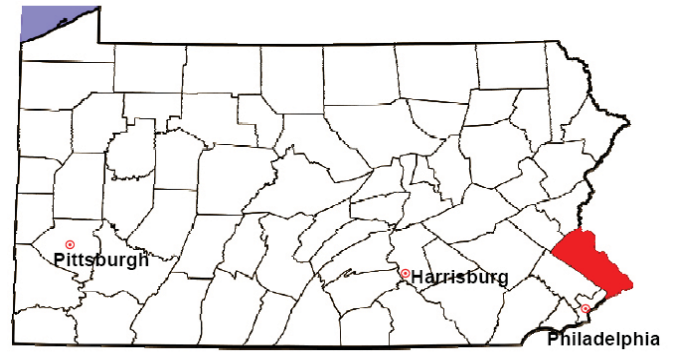


# BUCKS COUNTY

2008 Population Estimate: 621,643

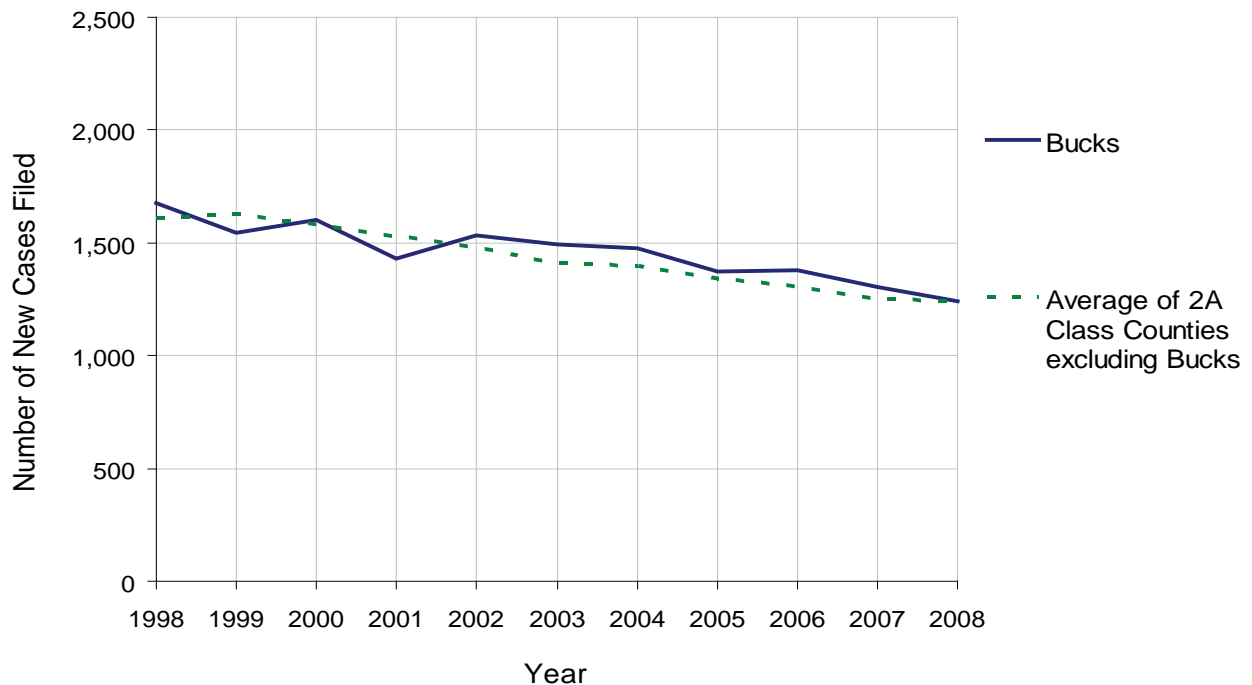
Class of County: 2A

No. of Common Pleas Court Judgeships: 13



<b>2008 Divorce</b>	No. of Petitions	%
Cases Pending 1/1/08	355	
New Cases Filed in '08	1,241	
<b>Cases Available for Processing</b>	<b>1,596</b>	
Processed By:		
Contested Before a Judge	34	2.8%
Contested Before a Master	164	13.3%
Uncontested	1,038	84.0%
Other	0	0.0%
<b>Cases Processed</b>	<b>1,236</b>	<b>100.0%</b>
<b>Cases Pending 12/31/08</b>	<b>360</b>	

Divorce New Cases Filed, 1998-2008



# BUCKS COUNTY

2008 Population Estimate: 621,643

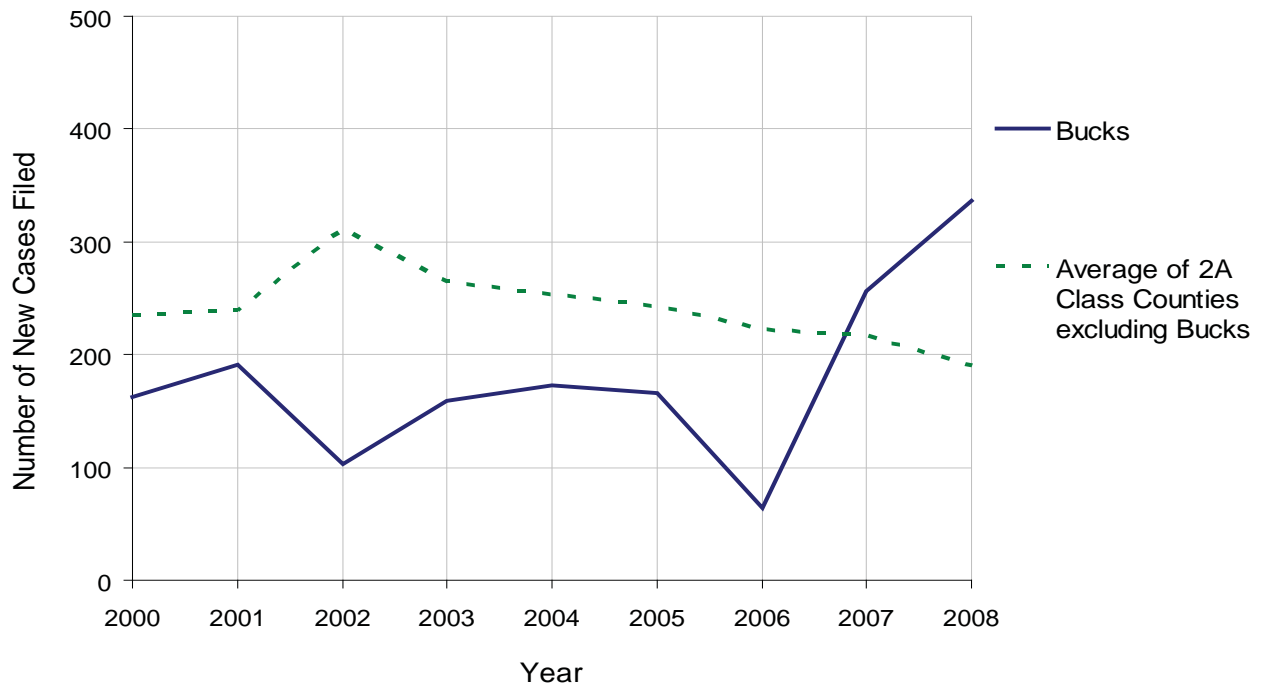
Class of County: 2A

No. of Common Pleas Court Judgeships: 13



<b>2008 Juvenile Dependency Abuse/Neglect</b>	<b>No. of Petitions</b>	<b>%</b>
Cases Pending 1/1/08	85	
New Cases Filed in '08	336	
<b>Cases Available for Processing</b>	<b>421</b>	
Processed By:		
Judge	224	98.2%
Non-Judicial Officer	0	0.0%
Other	4	1.8%
<b>Cases Processed</b>	<b>228</b>	<b>100.0%</b>
<b>Cases Pending 12/31/08</b>	<b>193</b>	

Abuse/Neglect New Cases Filed, 2000-2008



# BUCKS COUNTY

2008 Population Estimate: 621,643

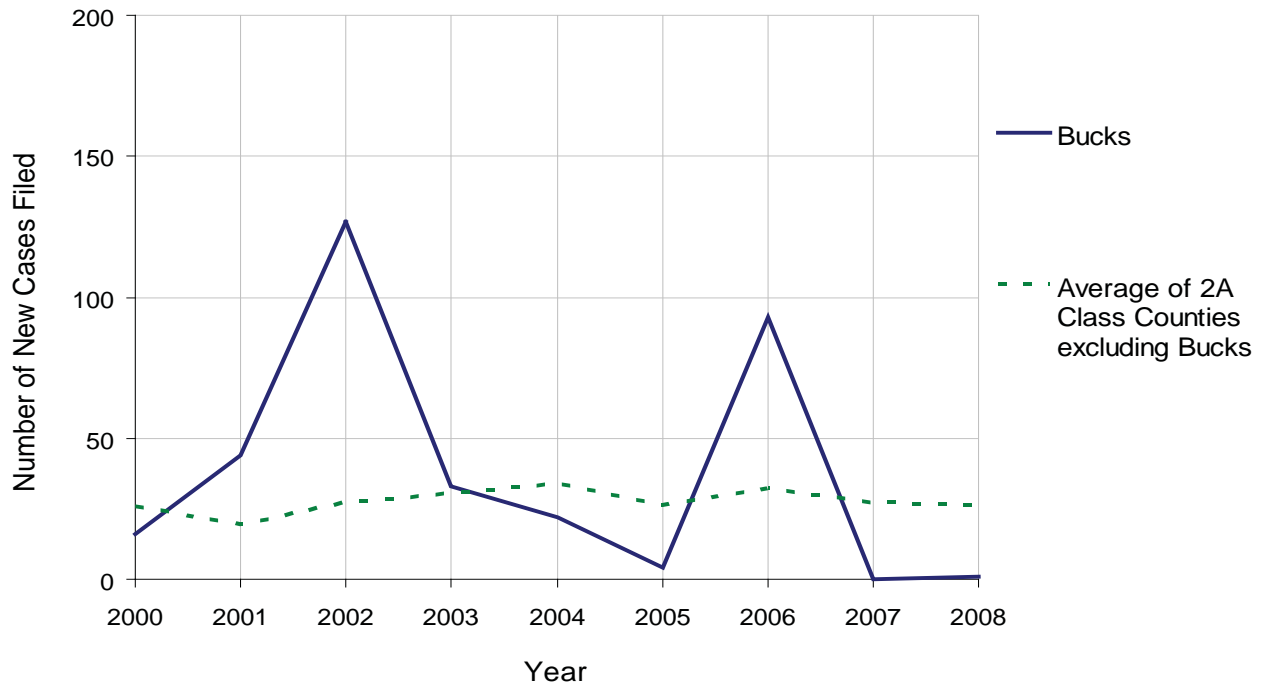
Class of County: 2A

No. of Common Pleas Court Judgeships: 13



2008 Juvenile Dependency Status Offenses	No. of Petitions	%
Cases Pending 1/1/08	0	
New Cases Filed in '08	1	
<b>Cases Available for Processing</b>	<b>1</b>	
Processed By:		
Judge	1	100.0%
Non-Judicial Officer	0	0.0%
Other	0	0.0%
<b>Cases Processed</b>	<b>1</b>	<b>100.0%</b>
<b>Cases Pending 12/31/08</b>	<b>0</b>	

Status Offenses New Cases Filed, 2000-2008



# BUCKS COUNTY

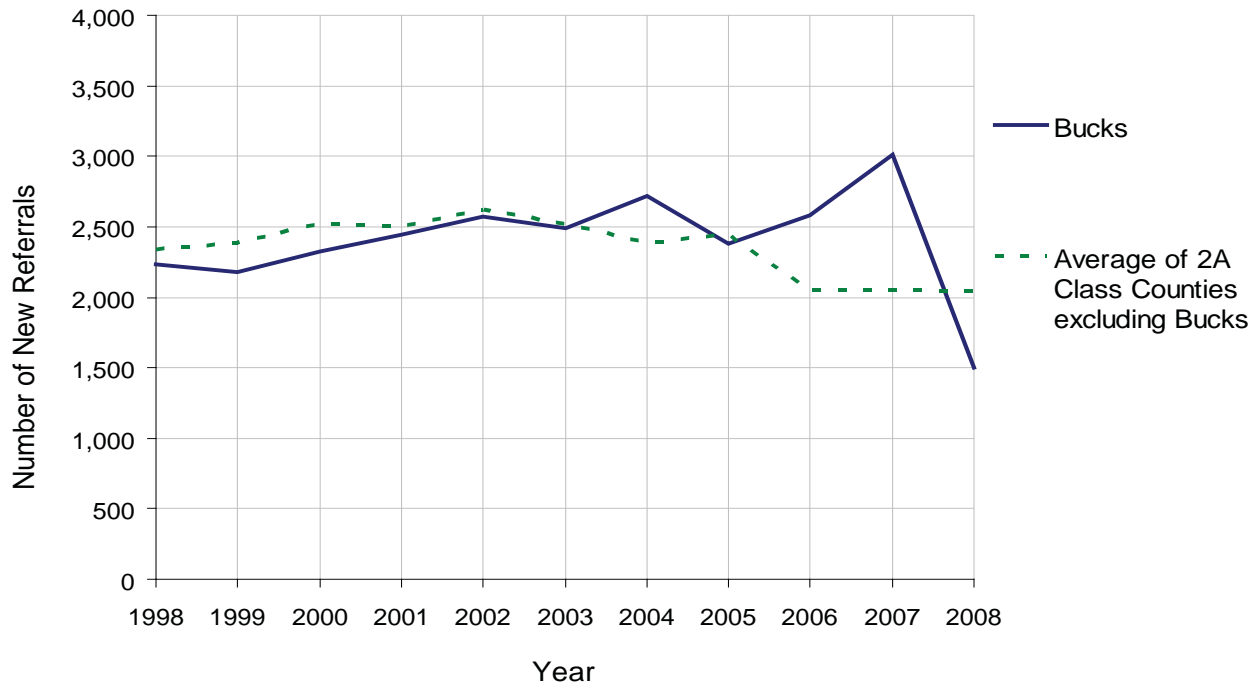
2008 Population Estimate: 621,643  
 Class of County: 2A  
 No. of Common Pleas Court Judgeships: 13



2008 Juvenile Delinquency	No. of Referrals	%
Cases Pending 1/1/08	513 <sup>(R)</sup>	
New Referrals in '08	1,505	
<b>Cases Available for Processing</b>	<b>2,018</b>	
Processed By:		
Judge	1,234	76.4%
Non-Judicial Officer	382	23.6%
Other	0	0.0%
<b>Cases Processed</b>	<b>1,616</b>	<b>100.0%</b>
<b>Cases Pending 12/31/08</b>	<b>402</b>	

(R) - Revised

Juvenile Delinquency New Referrals, 1998-2008



\* The significant drop in referrals from 2007 to 2008 reflects a change in reporting methods.

# BUCKS COUNTY

2008 Population Estimate: 621,643

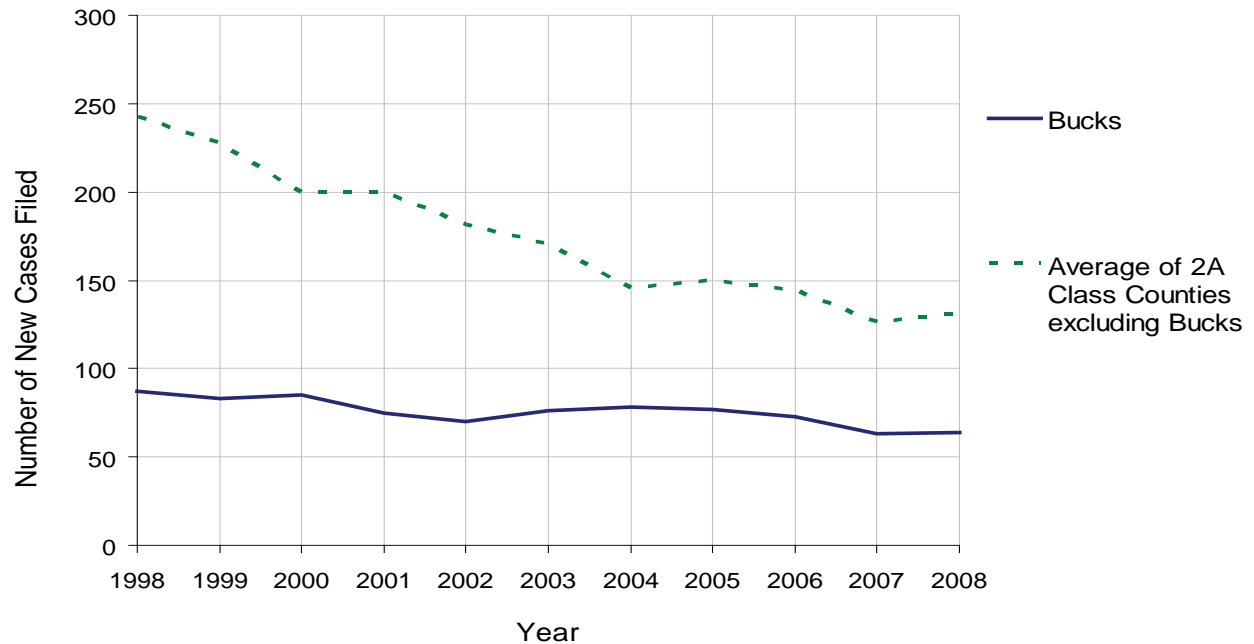
Class of County: 2A

No. of Common Pleas Court Judgeships: 13



<b>2008 Accounts</b>	No. of Accounts	%
Cases Pending 1/1/08	49	
New Cases Filed in '08	64	
<b>Cases Available for Processing</b>	<b>113</b>	
Processed By:		
Contested before a Judge	11	20.8%
Contested before a Non-judicial Officer	0	0.0%
Uncontested	42	79.2%
Other	0	0.0%
<b>Cases Processed</b>	<b>53</b>	<b>100.0%</b>
<b>Cases Pending 12/31/08</b>	<b>60</b>	

Accounts New Cases Filed, 1998-2008



# BUCKS COUNTY

2008 Population Estimate: 621,643

Class of County: 2A

No. of Common Pleas Court Judgeships: 13



<b>2008 Adoptions</b>		No. of Cases	%
Cases Pending 1/1/08		90	
New Cases Filed in '08		182	
<b>Cases Available for Processing</b>		<b>272</b>	
Processed By:			
Contested before a Judge	Granted	0	0.0%
	Denied	4	2.2%
Uncontested	Granted	173	96.1%
	Denied	3	1.7%
Other		0	0.0%
<b>Cases Processed</b>		<b>180</b>	<b>100.0%</b>
<b>Cases Pending 12/31/08</b>		<b>92</b>	

Note: Prior to 2008, each petition was counted as one new case, regardless of the number of children listed on the petition. Starting in 2008, each child listed on a petition is counted as a separate case. Therefore, statistics for 2008 should not be compared with those for previous years.

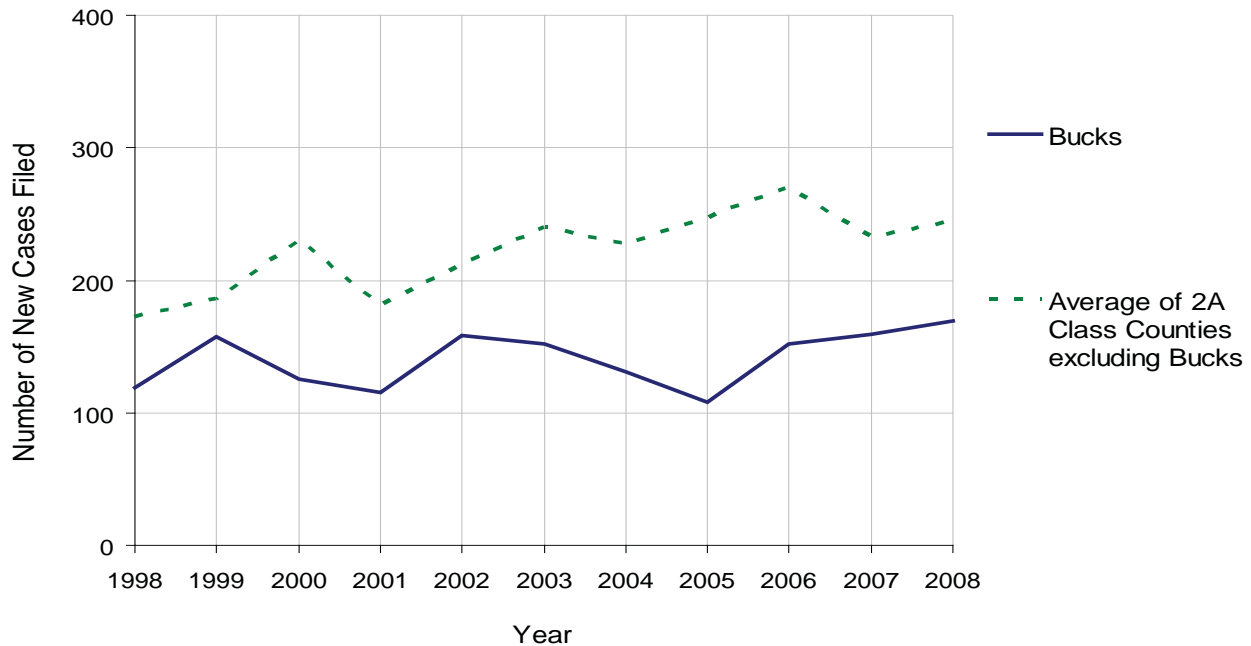
# BUCKS COUNTY

2008 Population Estimate: 621,643  
 Class of County: 2A  
 No. of Common Pleas Court Judgeships: 13



<b>2008 Relinquishments/Terminations</b>	No. of Petitions	%
Cases Pending 1/1/08	129	
New Cases Filed in '08	169	
<b>Cases Available for Processing</b>	<b>298</b>	
Processed By:		
Contested before a Judge	40	25.5%
Uncontested	105	66.9%
Other	12	7.6%
<b>Cases Processed</b>	<b>157</b>	<b>100.0%</b>
<b>Cases Pending 12/31/08</b>	<b>141</b>	

Relinquishments/Terminations New Cases Filed, 1998-2008



# BUCKS COUNTY

2008 Population Estimate: 621,643

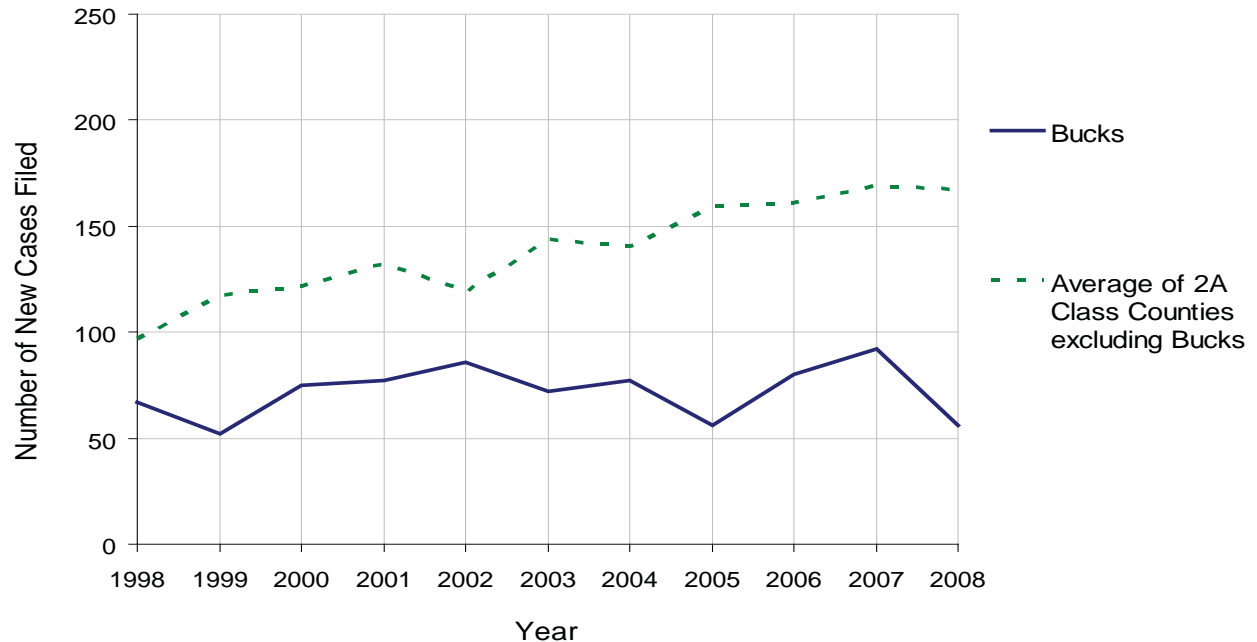
Class of County: 2A

No. of Common Pleas Court Judgeships: 13



2008 Appointment of Guardians	No. of Petitions	%
Cases Pending 1/1/08	47	
New Cases Filed in '08	56	
<b>Cases Available for Processing</b>	<b>103</b>	
Processed By:		
Contested before a Judge	4	5.3%
Uncontested	56	74.7%
Other	15	20.0%
<b>Cases Processed</b>	<b>75</b>	<b>100.0%</b>
<b>Cases Pending 12/31/08</b>	<b>28</b>	

Appointment of Guardians New Cases Filed, 1998-2008

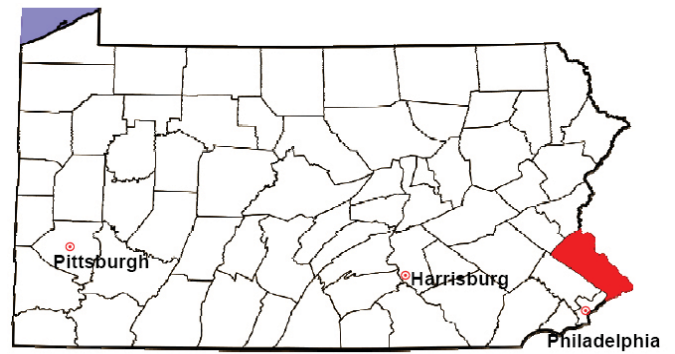


# BUCKS COUNTY

2008 Population Estimate: 621,643

Class of County: 2A

No. of Common Pleas Court Judgeships: 13



2008 Jury Activity & Performance Measures		
A. Juror Days	12,264	
B. Number Sent to Voir Dire	6,127	
Voir Dire Attendance Rate $(B/A * 100)$		50.0%
C. Number of Voir Dires Started	131	
Juror Days Per Voir Dire Starts $(A/C)$		94
D. Number of Jurors Selected	1,628	
Juror Selection Rate $(D/B * 100)$		26.6%
E. Number of Jury Trials Started	130	
Juror Days Per Trial Starts $(A/E)$		94
Number of Voir Dires Not Resulting in Trial $(C-E)$		1
Percent Voir Dires Not Resulting in Trial $(C-E)/C * 100$		0.8%
F. Pool Days	146	
G. Zero Panel Days	50	
Percent Zero Panel Days $(G/F * 100)$		34.2%
H. Total Juror Fees Incurred	\$91,410	
Average Juror Fees Per Trial $(H/E)$		\$703

Average Juror Fees Per Trial, 1998-2008

