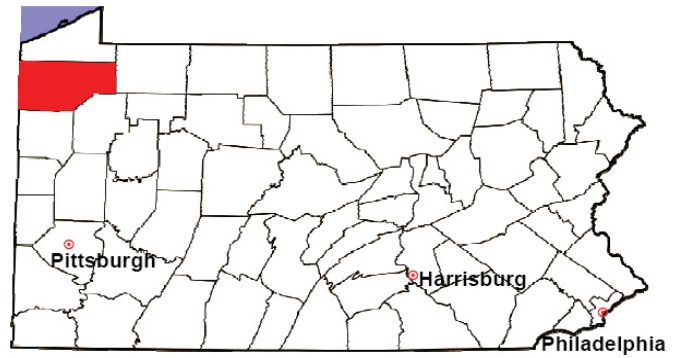


# CRAWFORD COUNTY

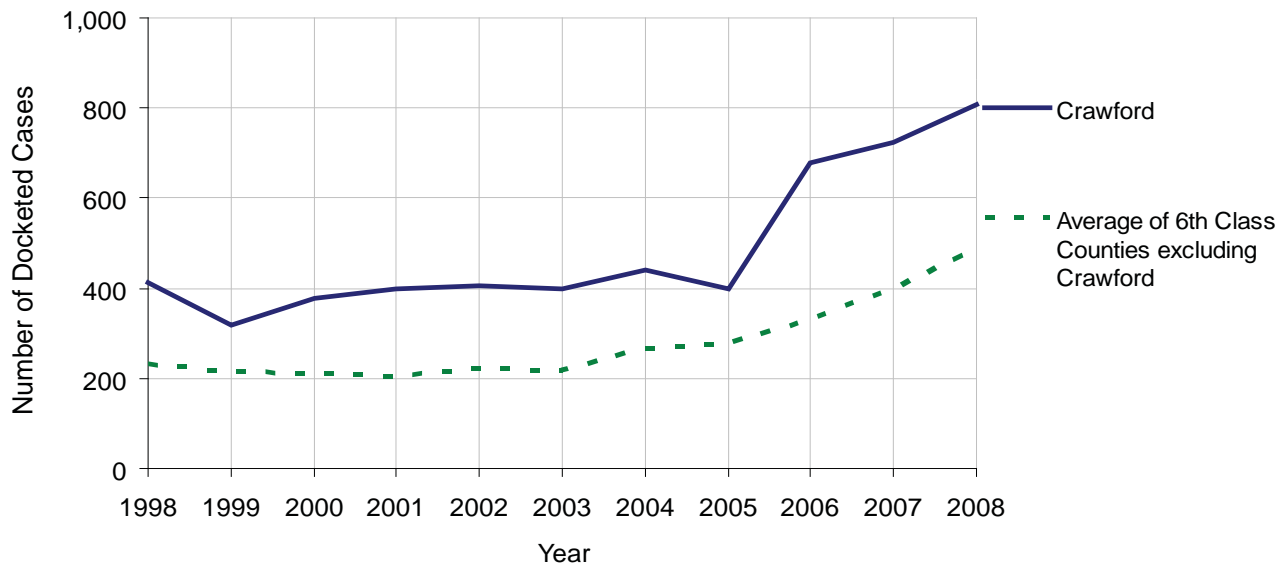
2008 Population Estimate: 88,411  
 Class of County: 6th  
 No. of Common Pleas Court Judgeships: 3



2008 Civil		Civil Action		
Docketed Cases		807		
Arbitrated Cases		13		
Trial-Ready Cases:		Civil Action	Other	Total
Cases Pending 1/1/08		26	388	414
Became Trial Ready in '08		33	268	301
Restored to Trial List		0	0	0
Appeals from Arbitration		4	0	4
<b>Cases Available for Trial</b>		<b>63</b>	<b>656</b>	<b>719</b>
Disposed By:				
Settlement		13	0	13
Non-Jury Trial		2	0	2
Jury Trial		4	0	4
Stricken from Trial List		3	0	3
Other		8	87	95
<b>Cases Disposed</b>		<b>30</b>	<b>87</b>	<b>117</b>
<b>Cases Pending 12/31/08</b>		<b>33</b>	<b>569</b>	<b>602</b>

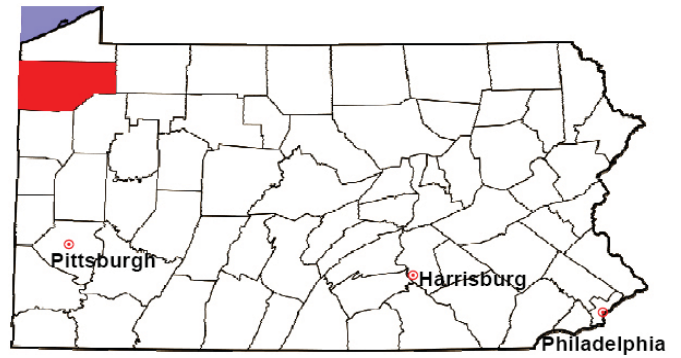
Age of Trial-Ready Cases as of 12/31/08 (Civil Action Only)		
0-6 months	13	39%
7-12 months	7	21%
13-18 months	3	9%
19-24 months	1	3%
25-30 months	0	0%
31-36 months	0	0%
Over 36 months	9	27%
<b>Total</b>	<b>33</b>	<b>100%</b>

Docketed Cases, 1998-2008



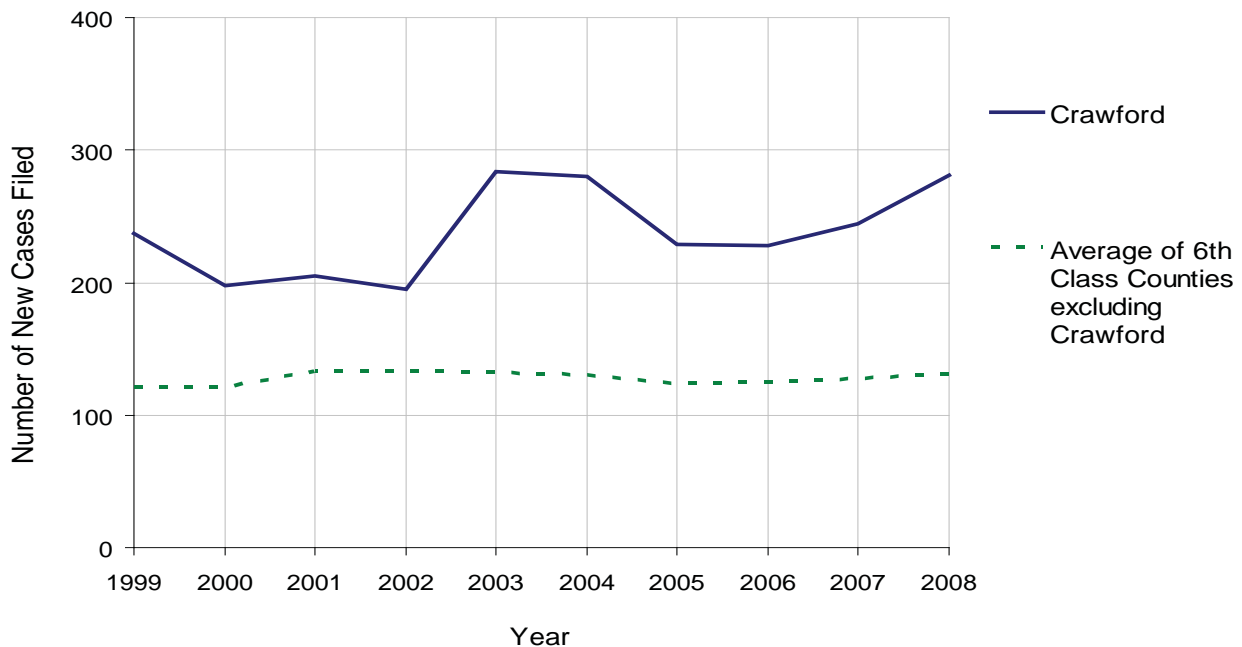
# CRAWFORD COUNTY

2008 Population Estimate: 88,411  
 Class of County: 6th  
 No. of Common Pleas Court Judgeships: 3



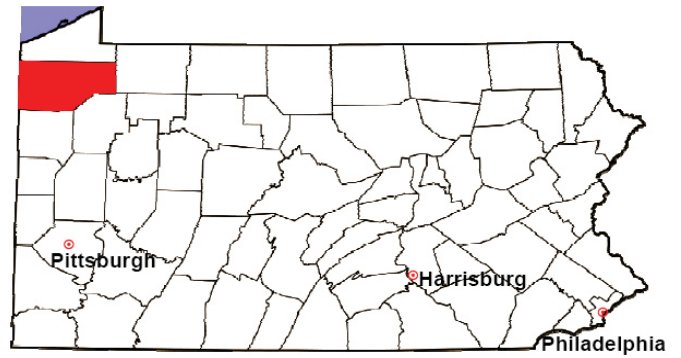
<b>2008 Protection From Abuse</b>	No. of Petitions	%
Cases Pending 1/1/08	31	
New Cases Filed in '08	281	
<b>Cases Available for Processing</b>	<b>312</b>	
Processed By:		
Final Order After Hearing	22	8.0%
Final Order by Stipulation or Agreement	97	35.1%
Dismissal	82	29.7%
Withdrawal	74	26.8%
Other	1	0.4%
<b>Cases Processed</b>	<b>276</b>	<b>100.0%</b>
<b>Cases Pending 12/31/08</b>	<b>36</b>	

PFA New Cases Filed, 1999-2008



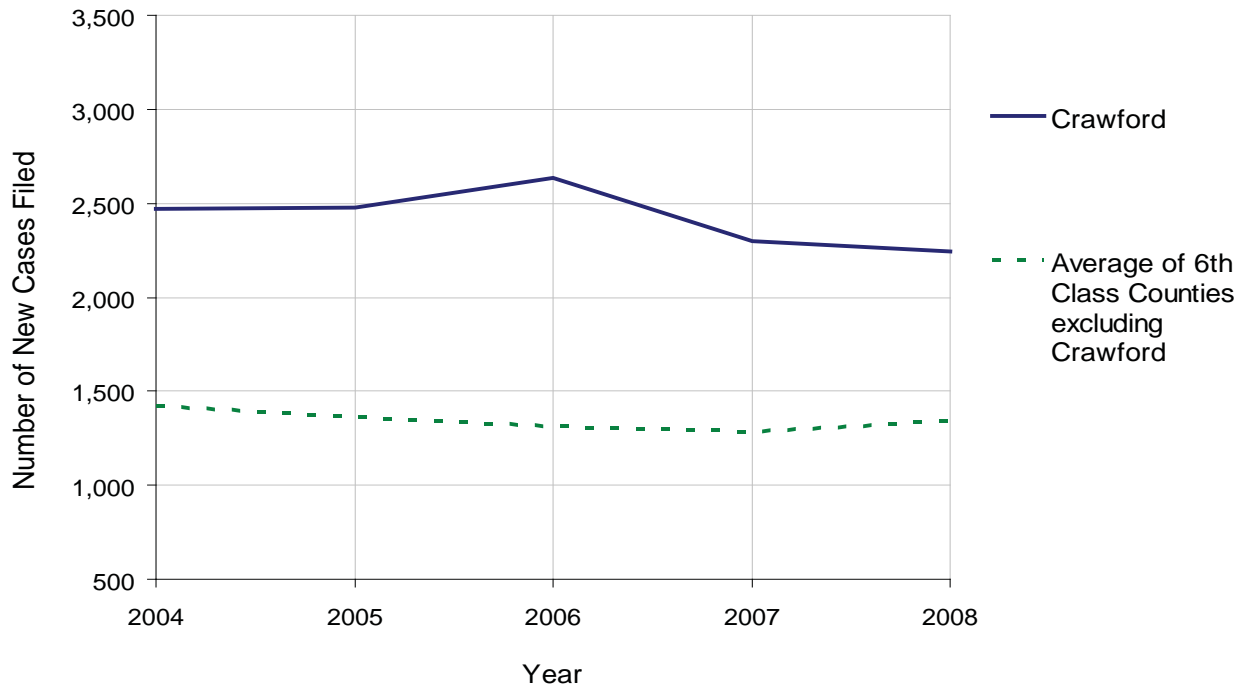
# CRAWFORD COUNTY

2008 Population Estimate: 88,411  
 Class of County: 6th  
 No. of Common Pleas Court Judgeships: 3



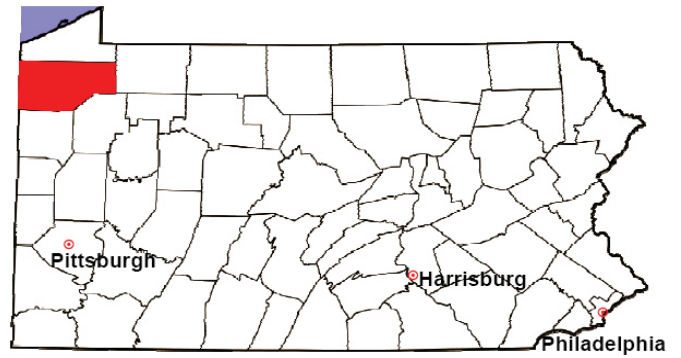
<b>2008 Spousal &amp; Child Support</b>	No. of Petitions	%
Cases Pending 1/1/08	173	
New Cases Filed in '08	2,246	
Dockets Transferred In (+)	12	
Dockets Transferred Out (-)	16	
<b>Cases Available for Processing</b>	<b>2,415</b>	
Processed By:		
Judge	104	4.7%
Intake Officer	2,119	95.3%
Hearing Officer	0	0.0%
Other	0	0.0%
<b>Cases Processed</b>	<b>2,223</b>	<b>100.0%</b>
<b>Cases Pending 12/31/08</b>	<b>192</b>	

Spousal & Child Support New Cases Filed, 1998-2008



# CRAWFORD COUNTY

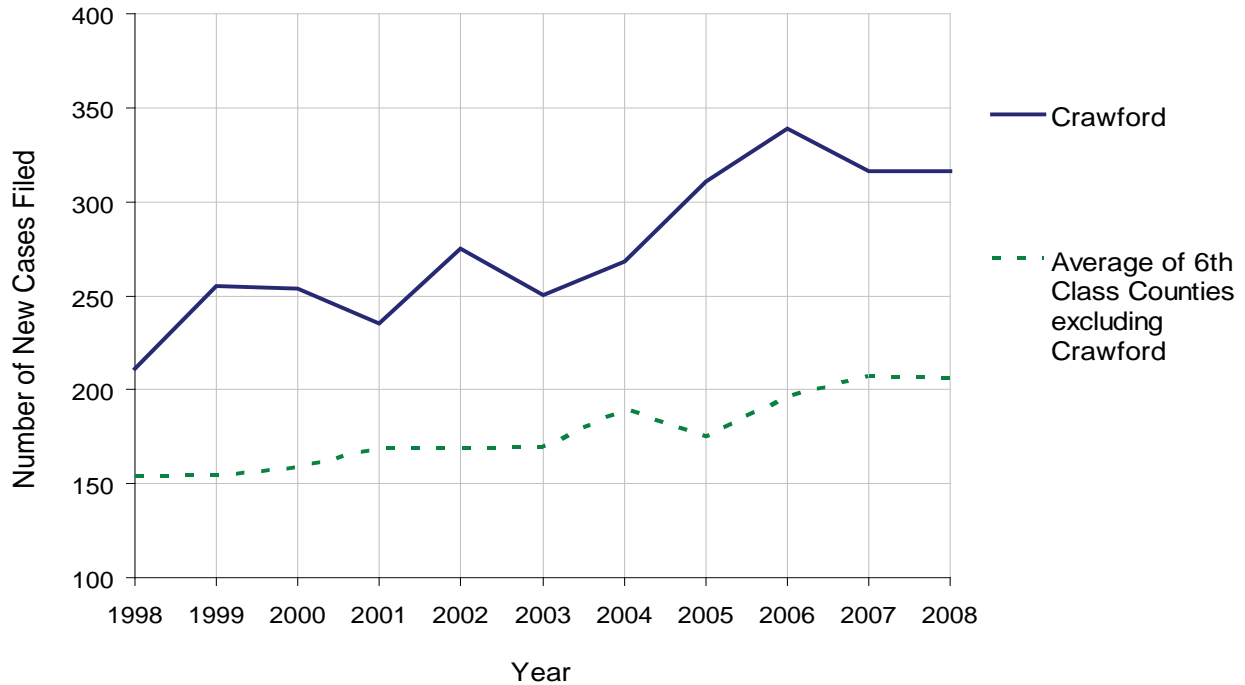
2008 Population Estimate: 88,411  
 Class of County: 6th  
 No. of Common Pleas Court Judgeships: 3



<b>2008 Custody/Partial Custody/Visitation</b>	No. of Petitions	%
Cases Pending 1/1/08	231 <sup>(R)</sup>	
New Cases Filed in '08	316	
<b>Cases Available for Processing</b>	<b>547</b>	
Processed By:		
Judge	9	2.5%
<b>Non-Judicial Officer</b>	<b>159</b>	<b>43.8%</b>
Other	195	53.7%
<b>Cases Processed</b>	<b>363</b>	<b>100.0%</b>
<b>Cases Pending 12/31/08</b>	<b>184</b>	

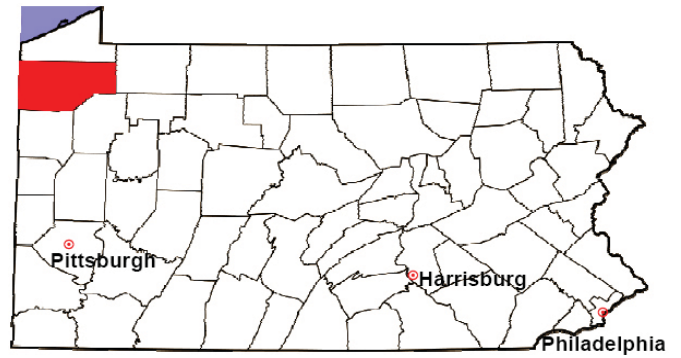
(R) - Revised

**Custody/Partial Custody/Visitation New Cases Filed  
 1998-2008**



# CRAWFORD COUNTY

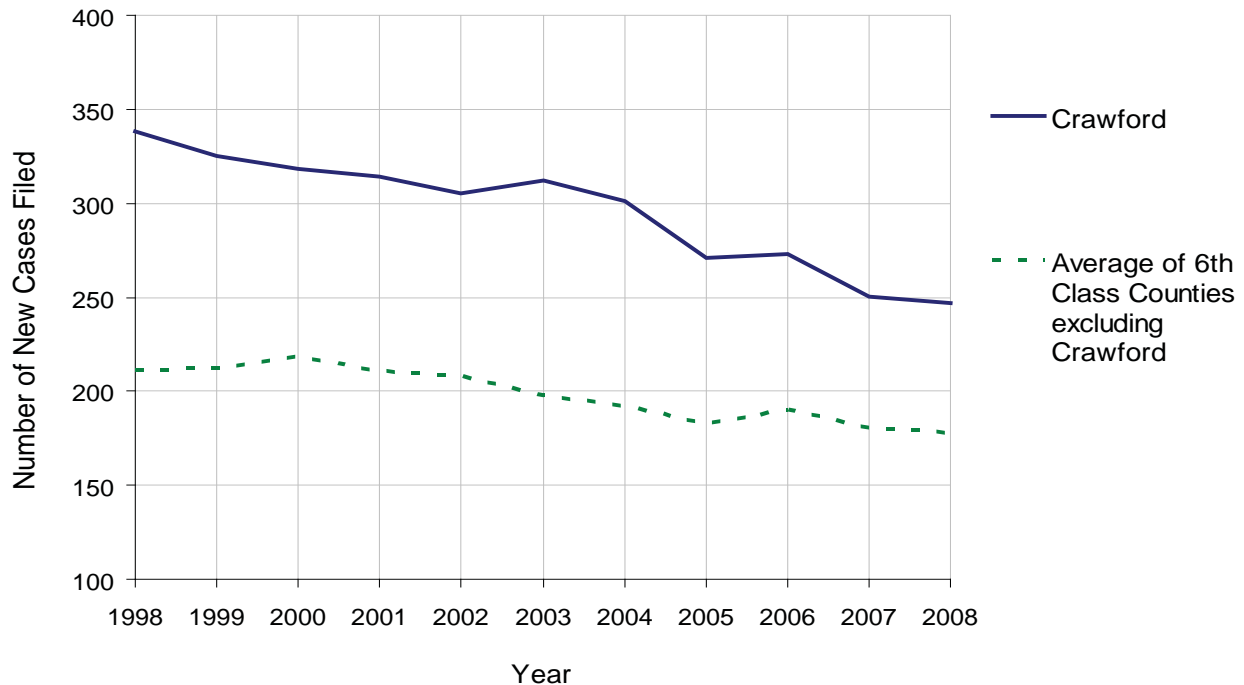
2008 Population Estimate: 88,411  
 Class of County: 6th  
 No. of Common Pleas Court Judgeships: 3



<b>2008 Divorce</b>	No. of Petitions	%
Cases Pending 1/1/08	536 <sup>(R)</sup>	
New Cases Filed in '08	247	
<b>Cases Available for Processing</b>	<b>783</b>	
Processed By:		
Contested Before a Judge	1	0.4%
Contested Before a Master	1	0.4%
Uncontested	181	74.8%
Other	59	24.4%
<b>Cases Processed</b>	<b>242</b>	<b>100.0%</b>
<b>Cases Pending 12/31/08</b>	<b>541</b>	

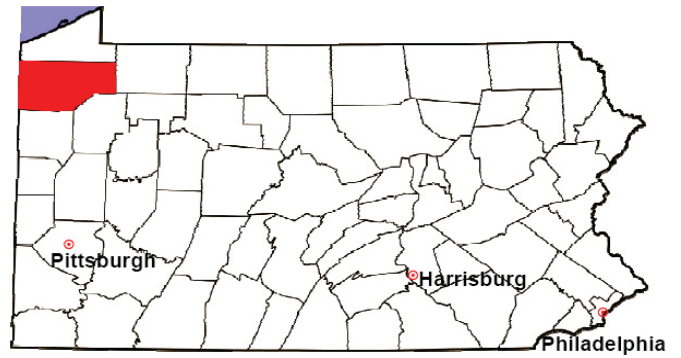
(R) - Revised

Divorce New Cases Filed, 1998-2008



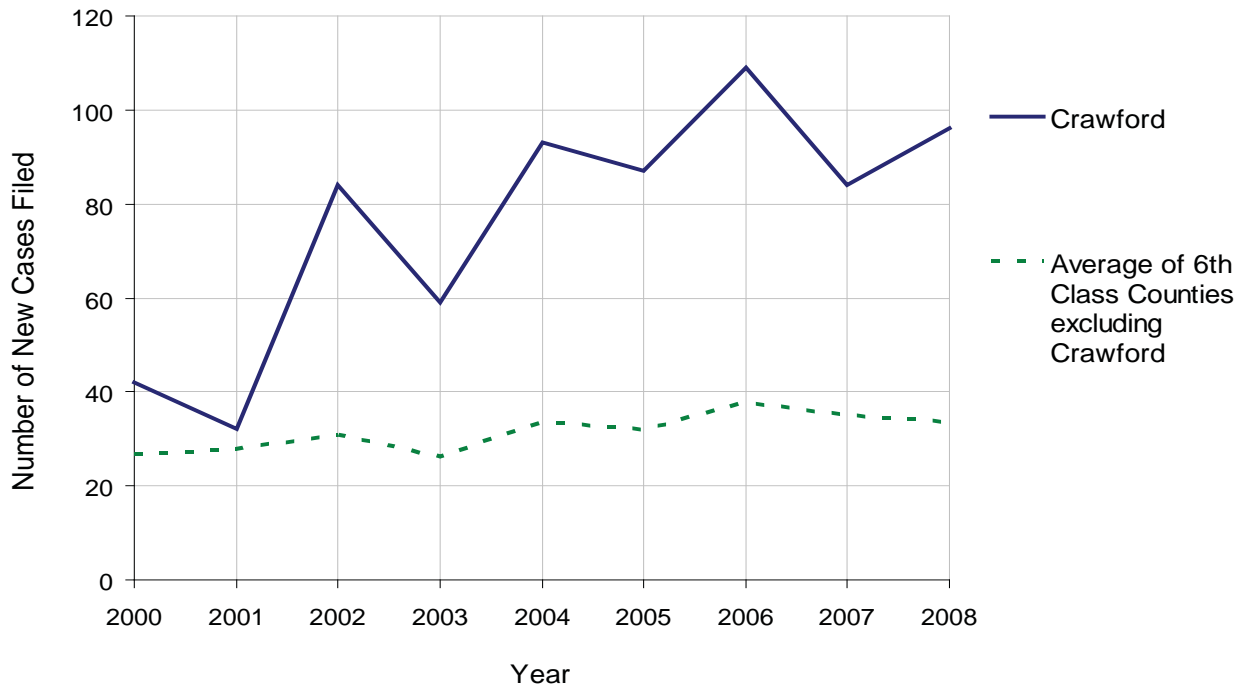
# CRAWFORD COUNTY

2008 Population Estimate: 88,411  
 Class of County: 6th  
 No. of Common Pleas Court Judgeships: 3



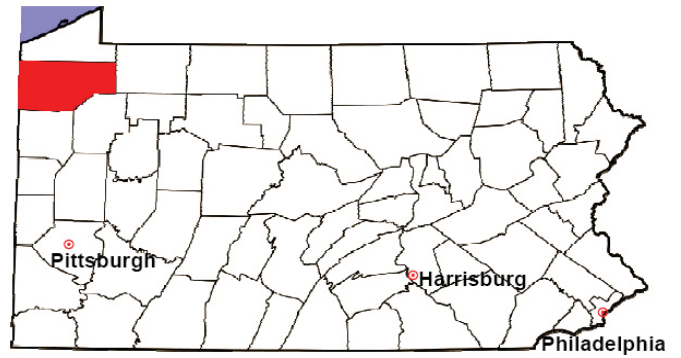
2008 Juvenile Dependency Abuse/Neglect	No. of Petitions	%
Cases Pending 1/1/08	0	
New Cases Filed in '08	96	
<b>Cases Available for Processing</b>	<b>96</b>	
Processed By:		
Judge	0	0.0%
Non-Judicial Officer	85	92.4%
Other	7	7.6%
<b>Cases Processed</b>	<b>92</b>	<b>100.0%</b>
<b>Cases Pending 12/31/08</b>	<b>4</b>	

Abuse/Neglect New Cases Filed, 2000-2008



# CRAWFORD COUNTY

2008 Population Estimate: 88,411  
Class of County: 6th  
No. of Common Pleas Court Judgeships: 3



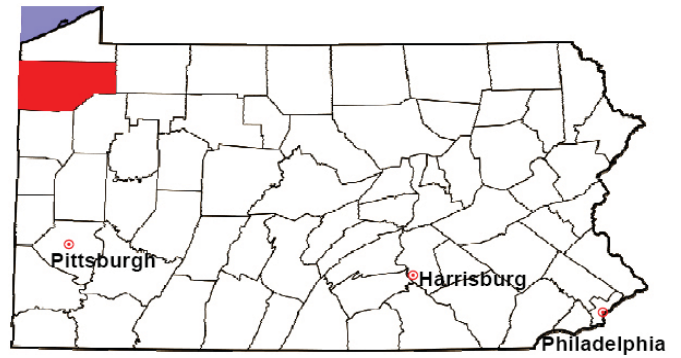
## 2008 Juvenile Dependency Status Offenses

Not Applicable:

In some counties, status offense petitions are not filed.

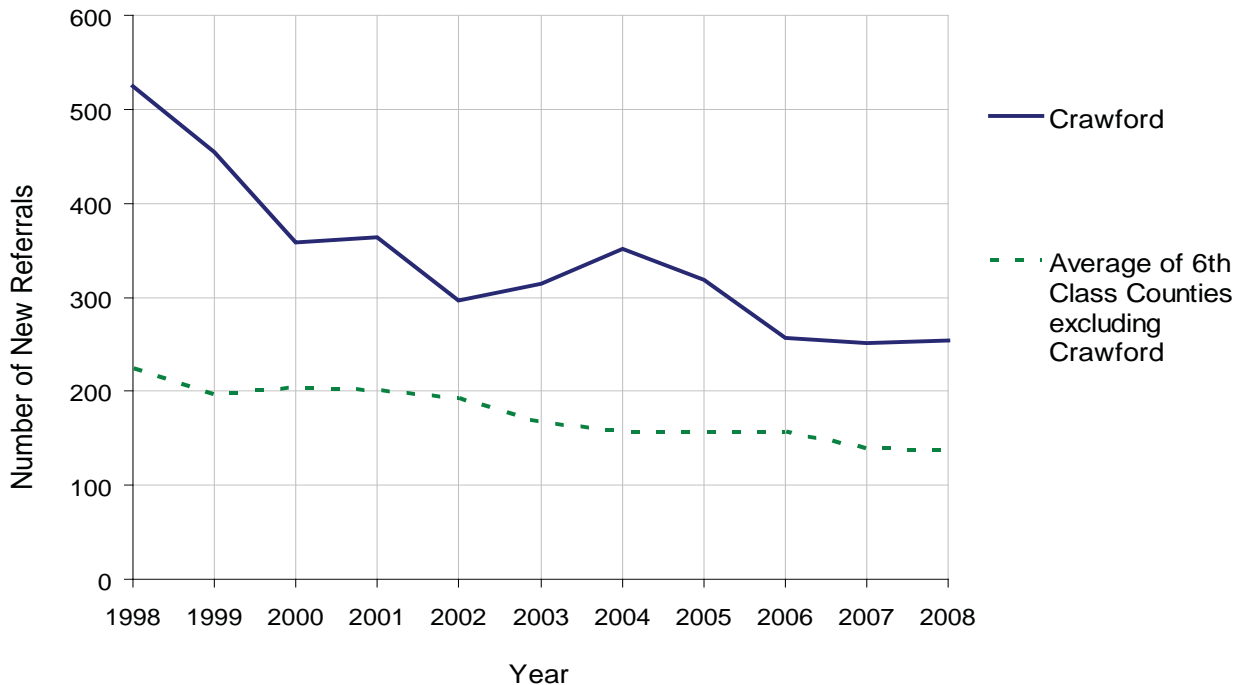
# CRAWFORD COUNTY

2008 Population Estimate: 88,411  
 Class of County: 6th  
 No. of Common Pleas Court Judgeships: 3



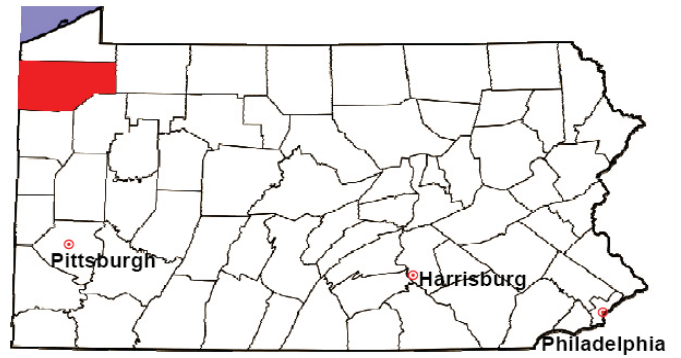
2008 Juvenile Delinquency	No. of Referrals	%
Cases Pending 1/1/08	69	
New Referrals in '08	254	
<b>Cases Available for Processing</b>	<b>323</b>	
Processed By:		
Judge	116	48.3%
Non-Judicial Officer	109	45.4%
Other	15	6.3%
<b>Cases Processed</b>	<b>240</b>	<b>100.0%</b>
<b>Cases Pending 12/31/08</b>	<b>83</b>	

Juvenile Delinquency New Referrals, 1998-2008



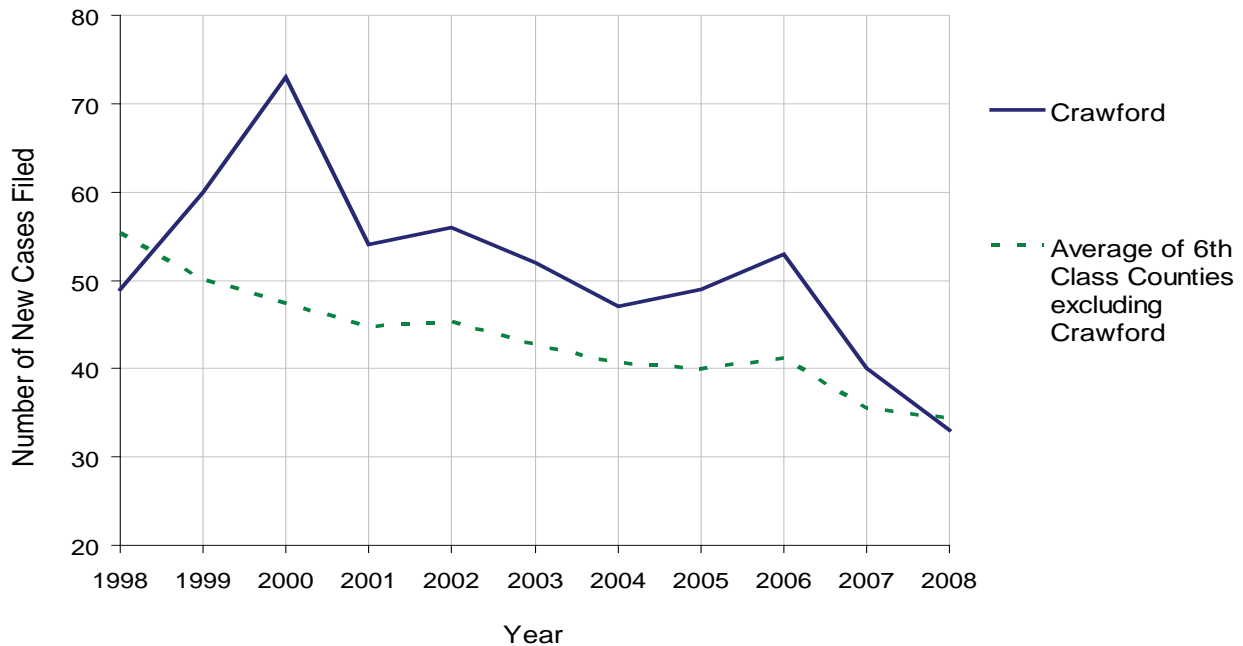
# CRAWFORD COUNTY

2008 Population Estimate: 88,411  
 Class of County: 6th  
 No. of Common Pleas Court Judgeships: 3



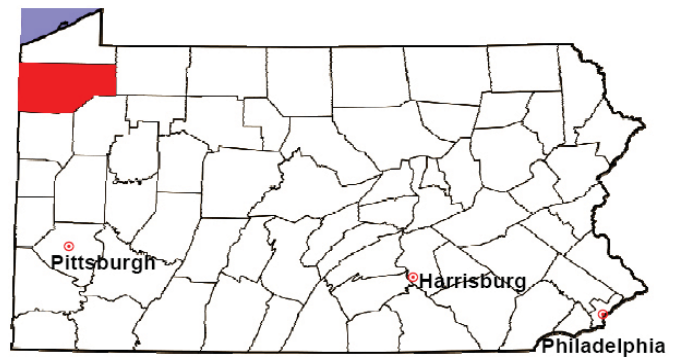
<b>2008 Accounts</b>	No. of Accounts	%
Cases Pending 1/1/08	22	
New Cases Filed in '08	33	
<b>Cases Available for Processing</b>	<b>55</b>	
Processed By:		
Contested before a Judge	0	0.0%
Contested before a Non-Judicial Officer	0	0.0%
Uncontested	26	96.3%
Other	1	3.7%
<b>Cases Processed</b>	<b>27</b>	<b>100.0%</b>
<b>Cases Pending 12/31/08</b>	<b>28</b>	

Accounts New Cases Filed, 1998-2008



# CRAWFORD COUNTY

2008 Population Estimate: 88,411  
 Class of County: 6th  
 No. of Common Pleas Court Judgeships: 3

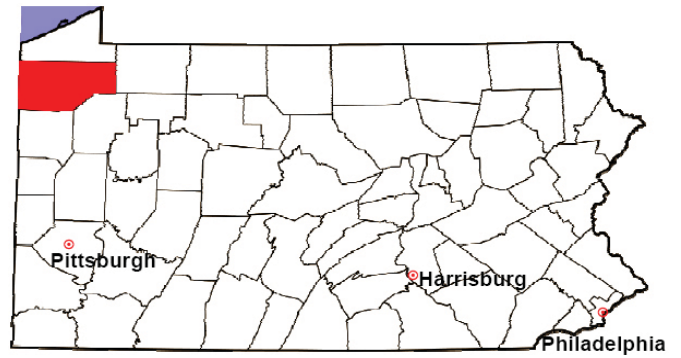


<b>2008 Adoptions</b>		No. of Cases	%
Cases Pending 1/1/08		4	
New Cases Filed in '08		29	
<b>Cases Available for Processing</b>		<b>33</b>	
Processed By:			
Contested before a Judge	Granted	1	3.2%
	Denied	0	0.0%
Uncontested	Granted	29	93.5%
	Denied	0	0.0%
Other		1	3.2%
<b>Cases Processed</b>		<b>31</b>	<b>100.0%</b>
<b>Cases Pending 12/31/08</b>		<b>2</b>	

Note: Prior to 2008, each petition was counted as one new case, regardless of the number of children listed on the petition. Starting in 2008, each child listed on a petition is counted as a separate case. Therefore, statistics for 2008 should not be compared with those for previous years.

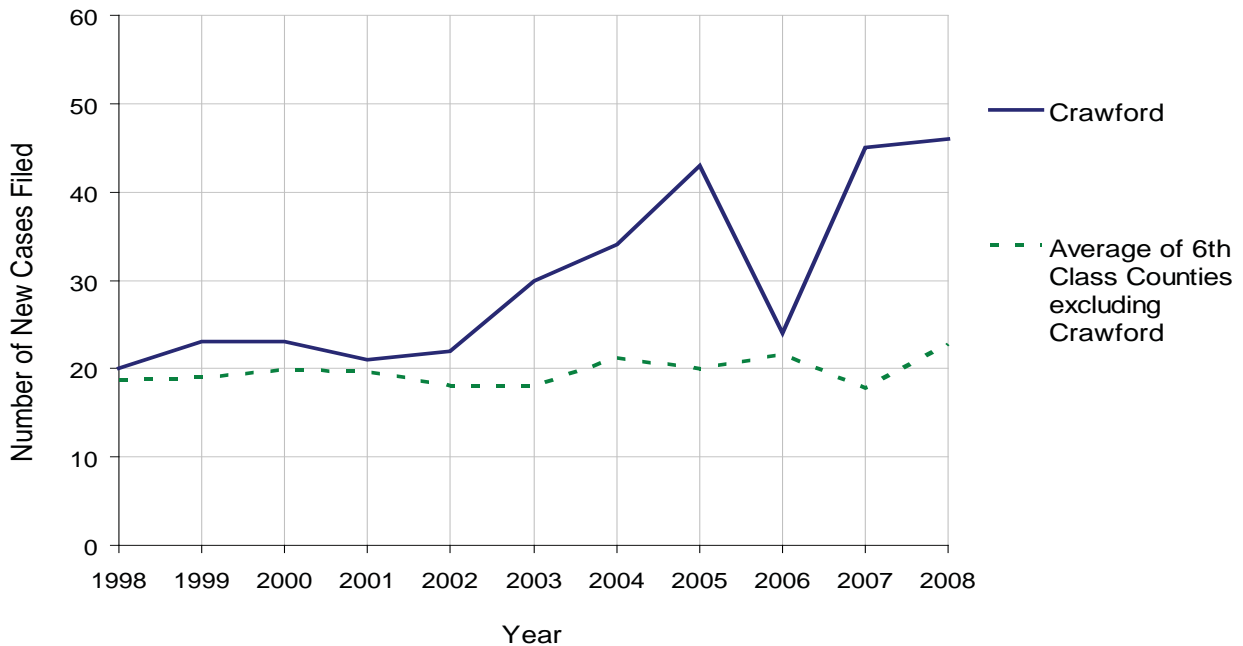
# CRAWFORD COUNTY

2008 Population Estimate: 88,411  
 Class of County: 6th  
 No. of Common Pleas Court Judgeships: 3



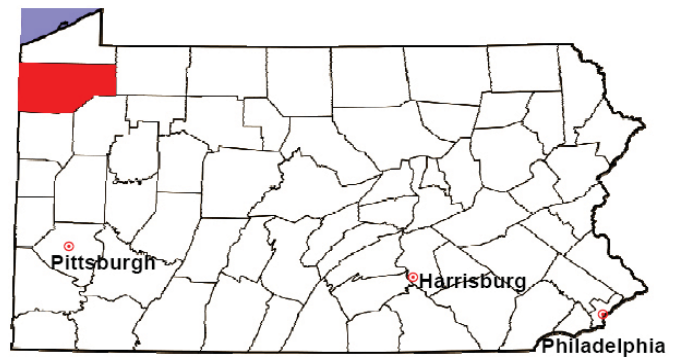
2008 Relinquishments/Terminations	No. of Petitions	%
Cases Pending 1/1/08	21	
New Cases Filed in '08	46	
<b>Cases Available for Processing</b>	<b>67</b>	
Processed By:		
Contested before a Judge	6	11.5%
Uncontested	45	86.5%
Other	1	1.9%
<b>Cases Processed</b>	<b>52</b>	<b>100.0%</b>
<b>Cases Pending 12/31/08</b>	<b>15</b>	

Relinquishments/Terminations New Cases Filed, 1998-2008



# CRAWFORD COUNTY

2008 Population Estimate: 88,411  
 Class of County: 6th  
 No. of Common Pleas Court Judgeships: 3



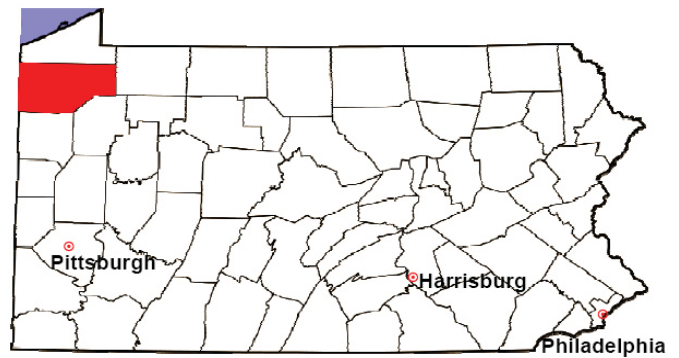
2008 Appointment of Guardians	No. of Petitions	%
Cases Pending 1/1/08	5	
New Cases Filed in '08	9	
<b>Cases Available for Processing</b>	<b>14</b>	
Processed By:		
Contested before a Judge	0	0.0%
Uncontested	10	90.9%
Other	1	9.1%
<b>Cases Processed</b>	<b>11</b>	<b>100.0%</b>
<b>Cases Pending 12/31/08</b>	<b>3</b>	

Appointment of Guardians New Cases Filed, 1998-2008



# CRAWFORD COUNTY

2008 Population Estimate: 88,411  
 Class of County: 6th  
 No. of Common Pleas Court Judgeships: 3



2008 Jury Activity & Performance Measures		
A. Juror Days	1,313	
B. Number Sent to Voir Dire	637	
Voir Dire Attendance Rate $(B/A * 100)$		48.5%
C. Number of Voir Dires Started	23	
Juror Days Per Voir Dire Starts $(A/C)$		57
D. Number of Jurors Selected	342	
Juror Selection Rate $(D/B * 100)$		53.7%
E. Number of Jury Trials Started	23	
Juror Days Per Trial Starts $(A/E)$		57
Number of Voir Dires Not Resulting in Trial $(C-E)$		0
Percent Voir Dires Not Resulting in Trial $(C-E)/C * 100$		0.0%
F. Pool Days	14	
G. Zero Panel Days	2	
Percent Zero Panel Days $(G/F * 100)$		14.3%
H. Total Juror Fees Incurred	\$24,232	
Average Juror Fees Per Trial $(H/E)$		\$1,054

Average Juror Fees Per Trial, 1998-2008

