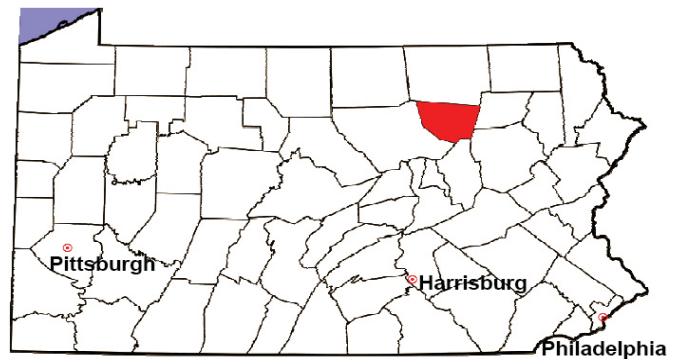


# SULLIVAN COUNTY

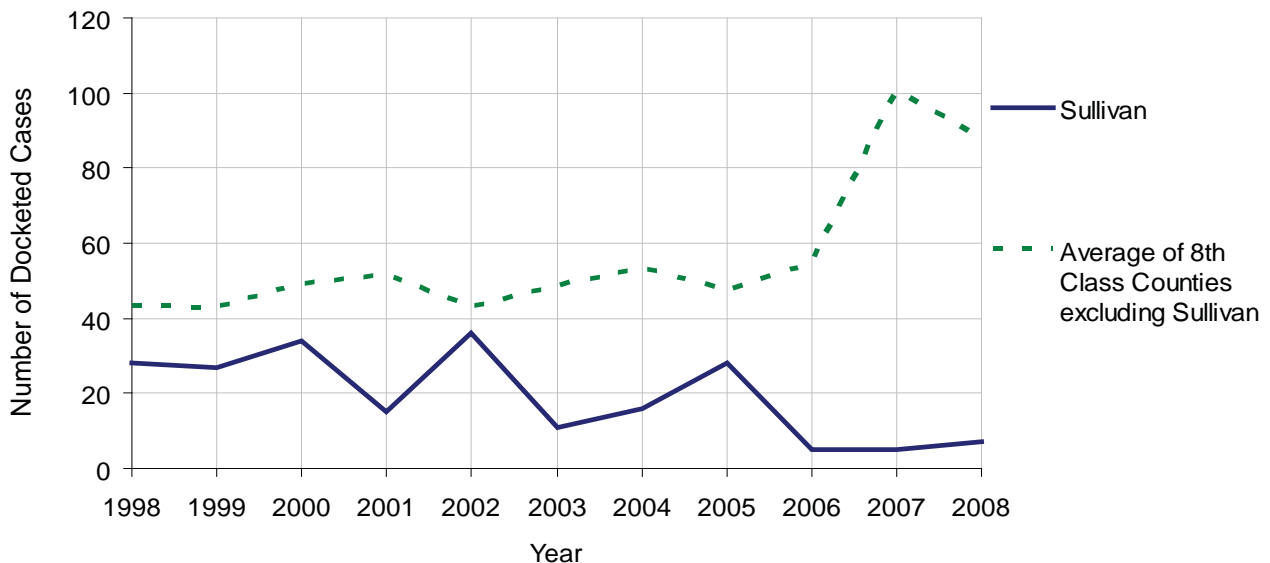
2008 Population Estimate: 6,124  
 Class of County: 8th  
 No. of Common Pleas Court Judgeships: 1  
 (Sullivan and Wyoming combined)



2008 Civil		Civil Action		
Docketed Cases		7		
Arbitrated Cases		0		
<b>Trial-Ready Cases:</b>		<b>Civil Action</b>	<b>Other</b>	<b>Total</b>
Cases Pending 1/1/08		1	0	1
Became Trial Ready in '08		2	0	2
Restored to Trial List		0	0	0
Appeals from Arbitration		0	0	0
<b>Cases Available for Trial</b>		<b>3</b>	<b>0</b>	<b>3</b>
<b>Disposed By:</b>				
Settlement		2	0	2
Non-Jury Trial		0	0	0
Jury Trial		0	0	0
Stricken from Trial List		0	0	0
Other		0	0	0
<b>Cases Disposed</b>		<b>2</b>	<b>0</b>	<b>2</b>
<b>Cases Pending 12/31/08</b>		<b>1</b>	<b>0</b>	<b>1</b>

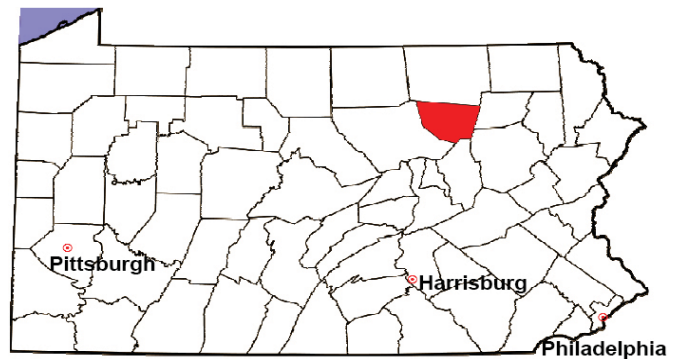
Age of Trial-Ready Cases as of 12/31/08 (Civil Action Only)		
0-6 months	0	0%
7-12 months	1	100%
13-18 months	0	0%
19-24 months	0	0%
25-30 months	0	0%
31-36 months	0	0%
Over 36 months	0	0%
<b>Total</b>	<b>1</b>	<b>100%</b>

Docketed Cases, 1998-2008



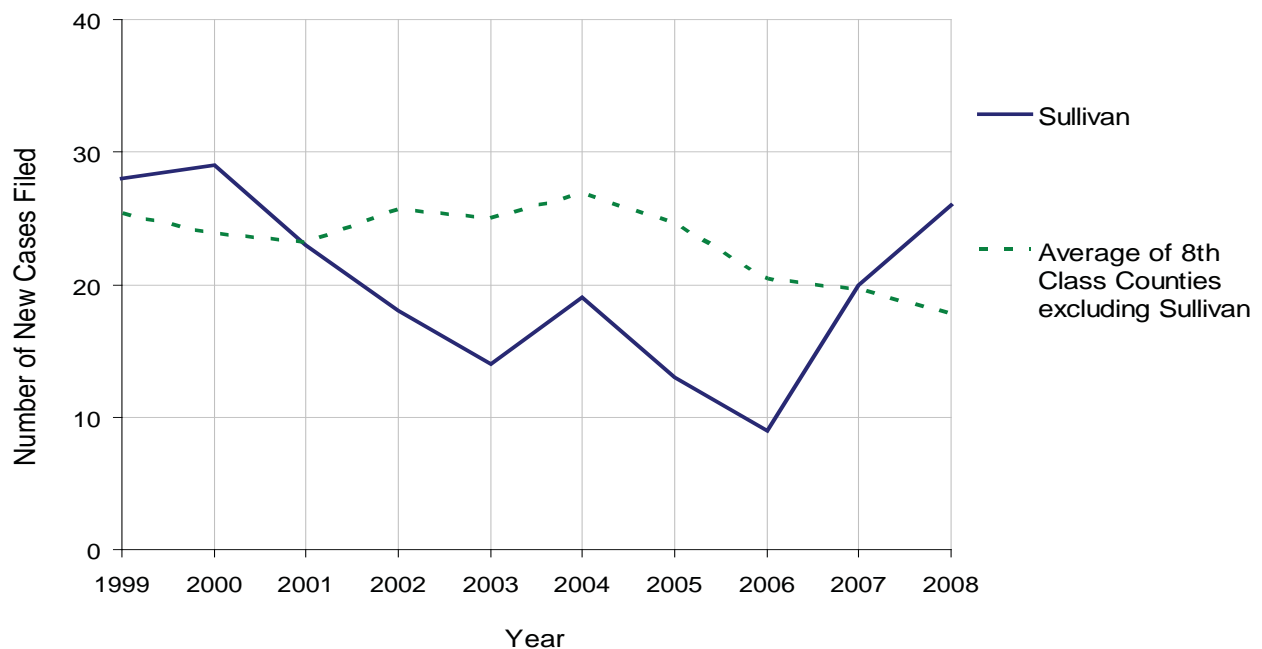
# SULLIVAN COUNTY

2008 Population Estimate: 6,124  
 Class of County: 8th  
 No. of Common Pleas Court Judgeships: 1  
 (Sullivan and Wyoming combined)



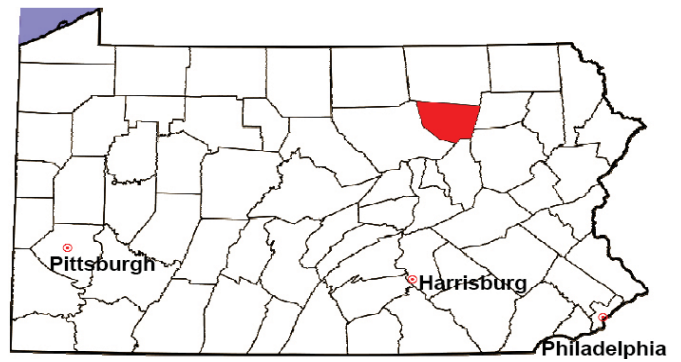
<b>2008 Protection From Abuse</b>	No. of Petitions	%
Cases Pending 1/1/08	0	
New Cases Filed in '08	26	
<b>Cases Available for Processing</b>	<b>26</b>	
Processed By:		
Final Order After Hearing	8	32.0%
Final Order by Stipulation or Agreement	8	32.0%
Dismissal	9	36.0%
Withdrawal	0	0.0%
Other	0	0.0%
<b>Cases Processed</b>	<b>25</b>	<b>100.0%</b>
<b>Cases Pending 12/31/08</b>	<b>1</b>	

PFA New Cases Filed, 1999-2008



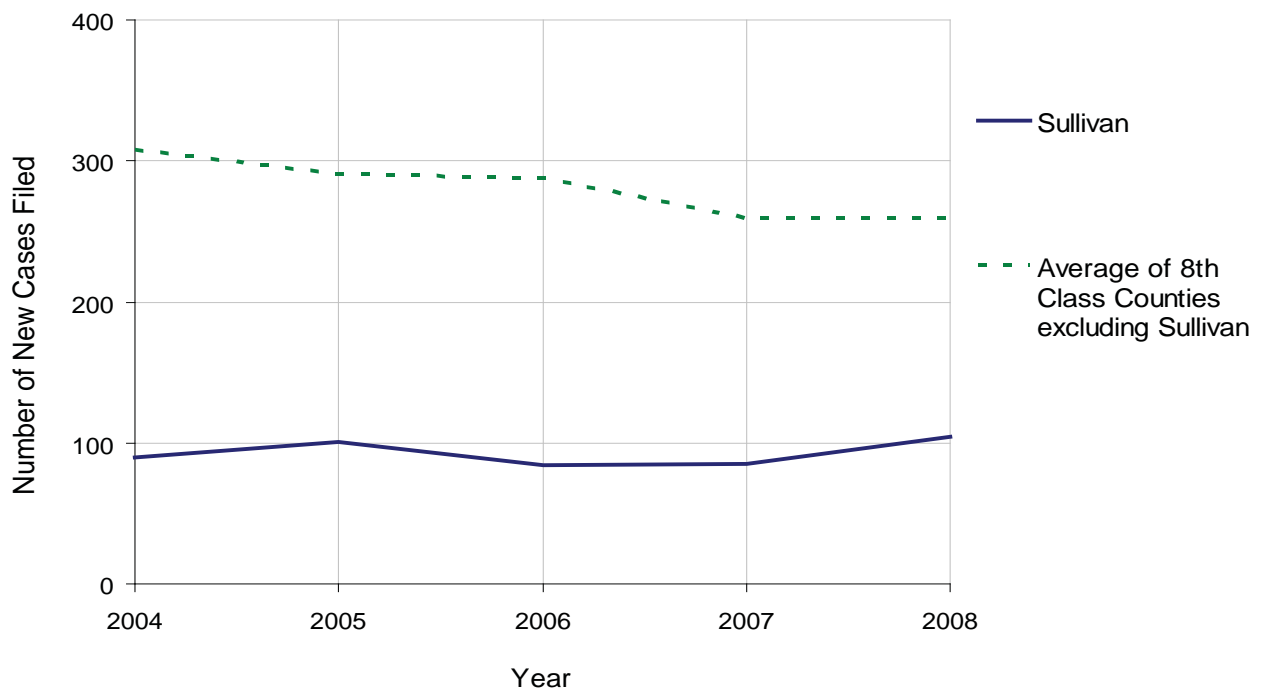
# SULLIVAN COUNTY

2008 Population Estimate: 6,124  
 Class of County: 8th  
 No. of Common Pleas Court Judgeships: 1  
 (Sullivan and Wyoming combined)



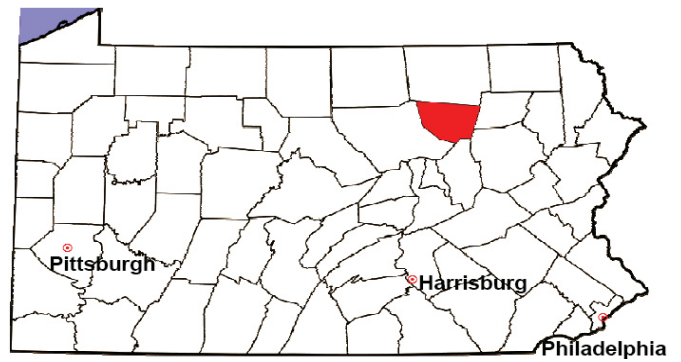
<b>2008 Spousal &amp; Child Support</b>	No. of Petitions	%
Cases Pending 1/1/08	16	
New Cases Filed in '08	104	
Dockets Transferred In (+)	0	
Dockets Transferred Out (-)	8	
<b>Cases Available for Processing</b>	<b>112</b>	
Processed By:		
Judge	4	4.3%
Intake Officer	88	95.7%
Hearing Officer	0	0.0%
Other	0	0.0%
<b>Cases Processed</b>	<b>92</b>	<b>100.0%</b>
<b>Cases Pending 12/31/08</b>	<b>20</b>	

Spousal & Child Support New Cases Filed, 1998-2008



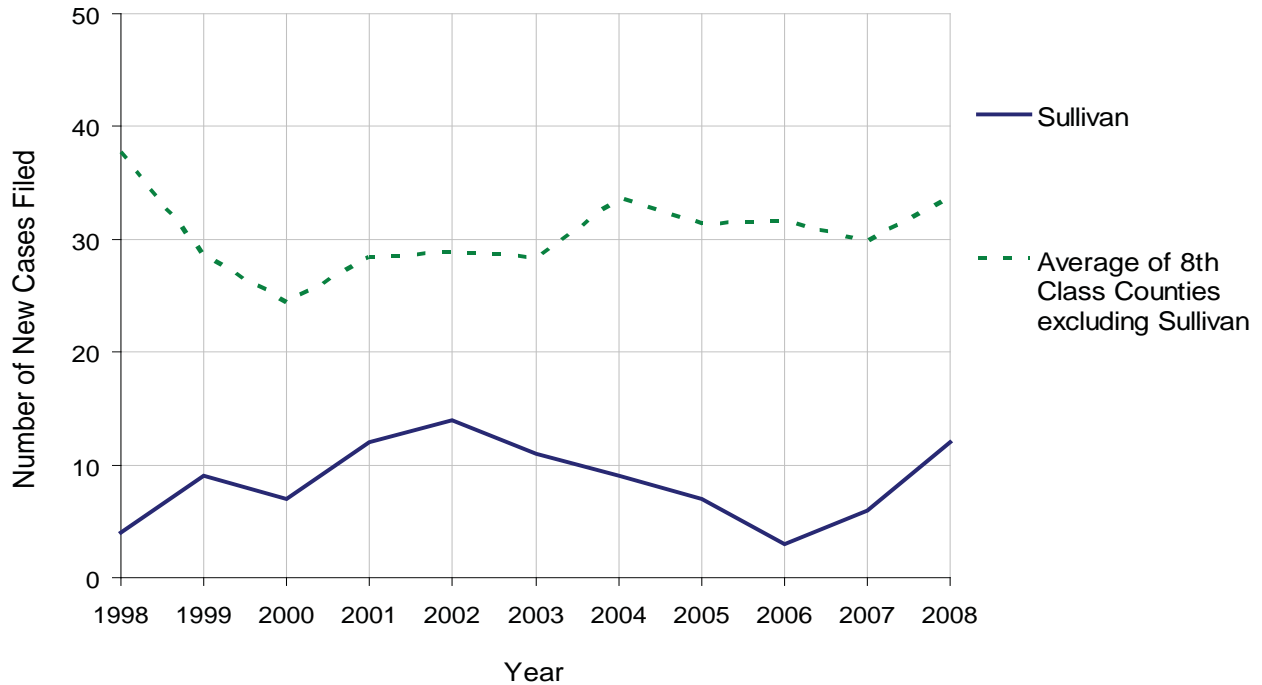
# SULLIVAN COUNTY

2008 Population Estimate: 6,124  
 Class of County: 8th  
 No. of Common Pleas Court Judgeships: 1  
 (Sullivan and Wyoming combined)



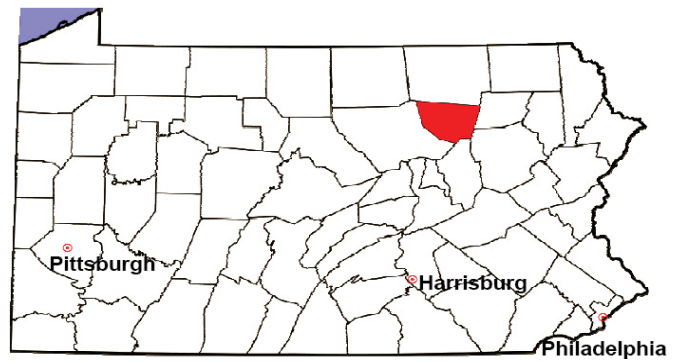
<b>2008 Custody/Partial Custody/Visitation</b>	No. of Petitions	%
Cases Pending 1/1/08	0	
New Cases Filed in '08	12	
<b>Cases Available for Processing</b>	<b>12</b>	
Processed By:		
Judge	7	58.3%
Non-Judicial Officer	0	0.0%
Other	5	41.7%
<b>Cases Processed</b>	<b>12</b>	<b>100.0%</b>
<b>Cases Pending 12/31/08</b>	<b>0</b>	

Custody/Partial Custody/Visitation New Cases Filed  
 1998-2008



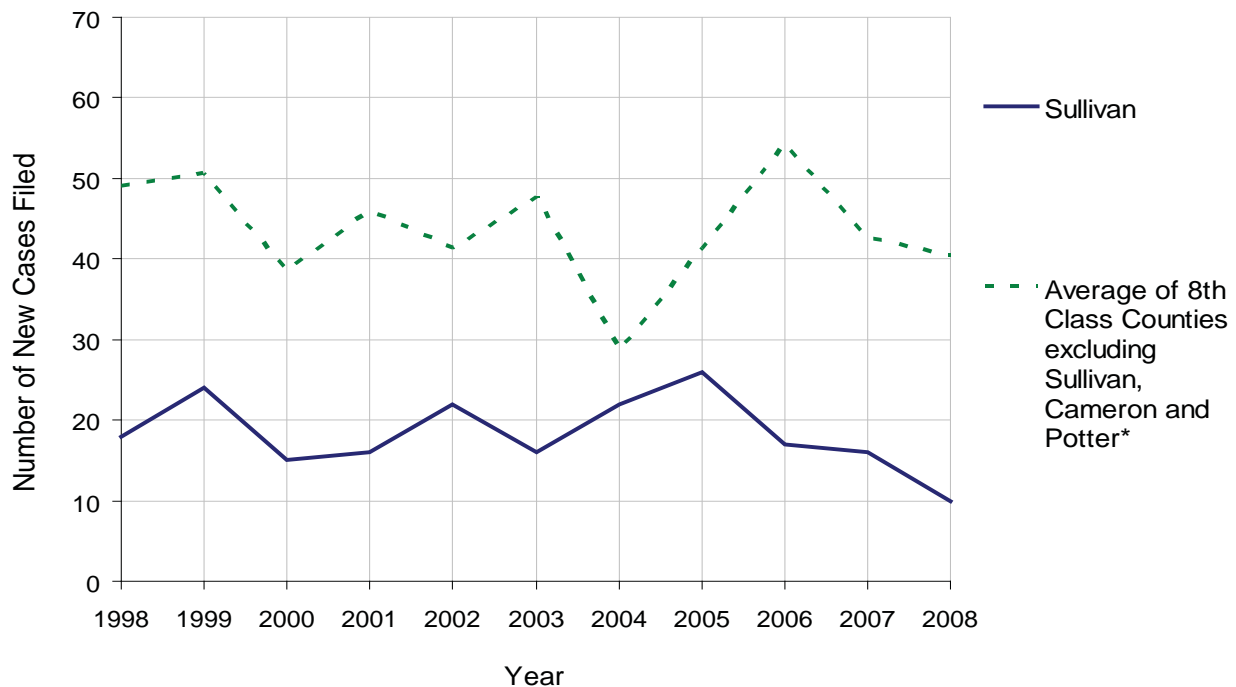
# SULLIVAN COUNTY

2008 Population Estimate: 6,124  
 Class of County: 8th  
 No. of Common Pleas Court Judgeships: 1  
 (Sullivan and Wyoming combined)



<b>2008 Divorce</b>	No. of Petitions	%
Cases Pending 1/1/08	49	
New Cases Filed in '08	10	
<b>Cases Available for Processing</b>	<b>59</b>	
Processed By:		
Contested Before a Judge	0	0.0%
Contested Before a Master	1	7.1%
Uncontested	13	92.9%
Other	0	0.0%
<b>Cases Processed</b>	<b>14</b>	<b>100.0%</b>
<b>Cases Pending 12/31/08</b>	<b>45</b>	

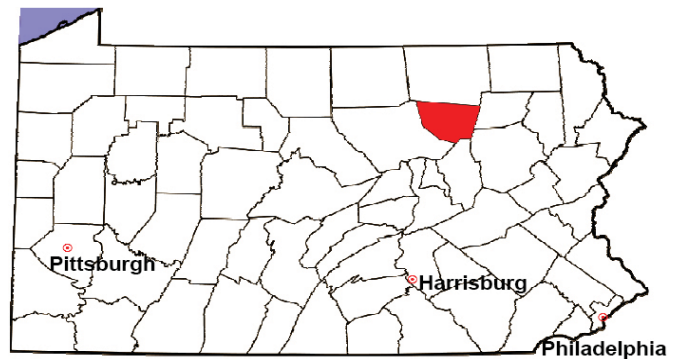
Divorce New Cases Filed, 1998-2008



\* Due to a high number of out-of-district petitions, Cameron and Potter Counties have larger inventories than other 8th class counties. Therefore, it is not meaningful to compare Cameron and Potter Counties with other 8th class counties.

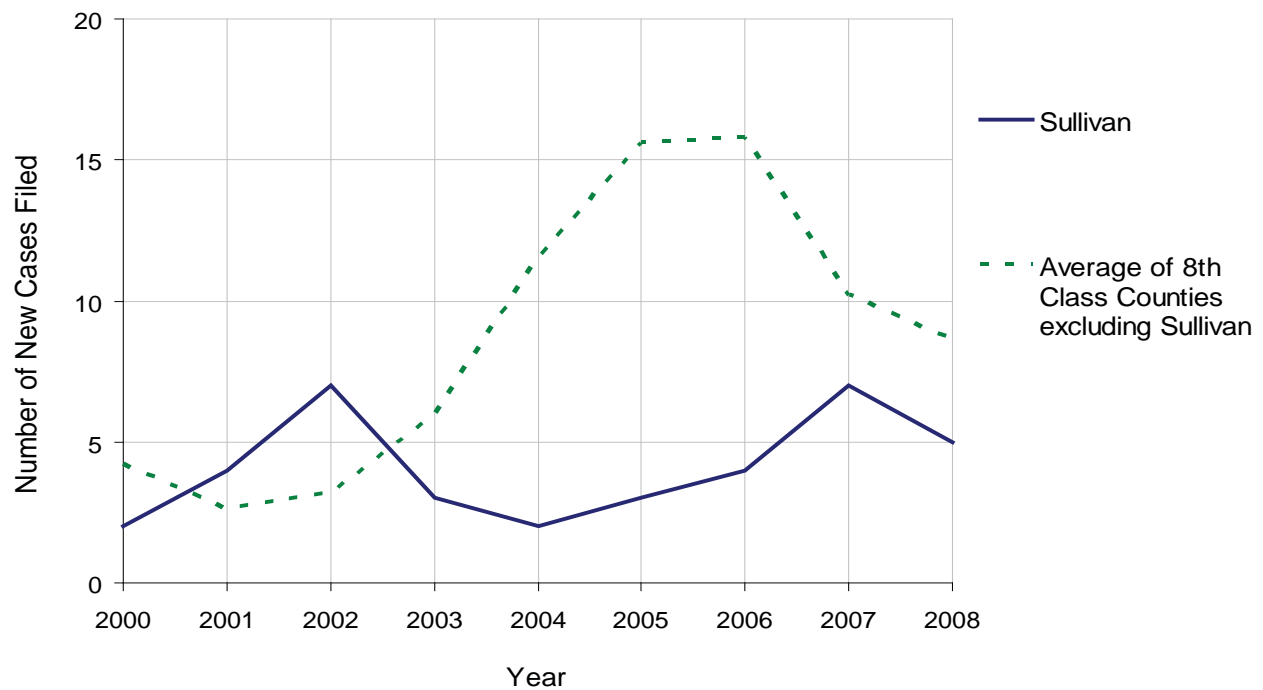
# SULLIVAN COUNTY

2008 Population Estimate: 6,124  
 Class of County: 8th  
 No. of Common Pleas Court Judgeships: 1  
 (Sullivan and Wyoming combined)



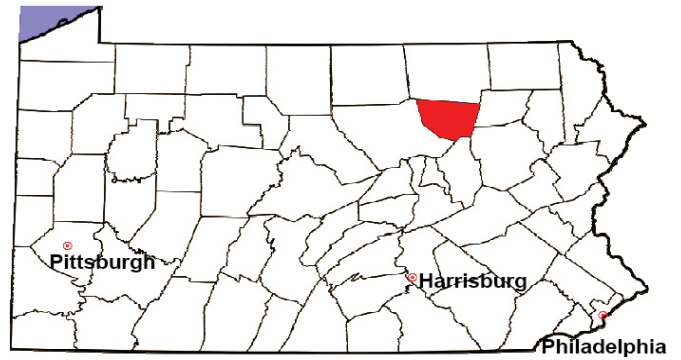
2008 Juvenile Dependency Abuse/Neglect	No. of Petitions	%
Cases Pending 1/1/08	1	
New Cases Filed in '08	5	
<b>Cases Available for Processing</b>	<b>6</b>	
Processed By:		
Judge	4	80.0%
Non-Judicial Officer	0	0.0%
Other	1	20.0%
<b>Cases Processed</b>	<b>5</b>	<b>100.0%</b>
<b>Cases Pending 12/31/08</b>	<b>1</b>	

Abuse/Neglect New Cases Filed, 2000-2008



# SULLIVAN COUNTY

2008 Population Estimate: 6,124  
Class of County: 8th  
No. of Common Pleas Court Judgeships: 1  
(Sullivan and Wyoming combined)



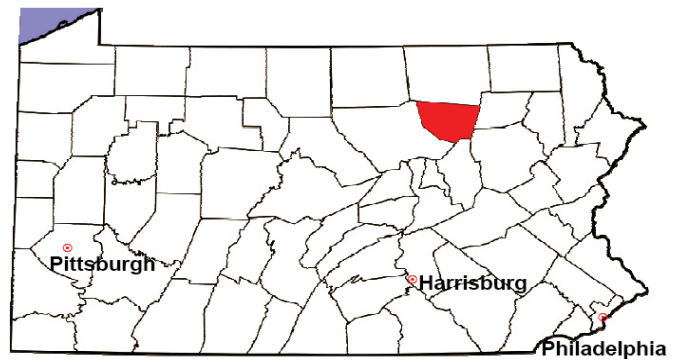
## 2008 Juvenile Dependency Status Offenses

Not Applicable:

In some counties, status offense petitions are not filed.

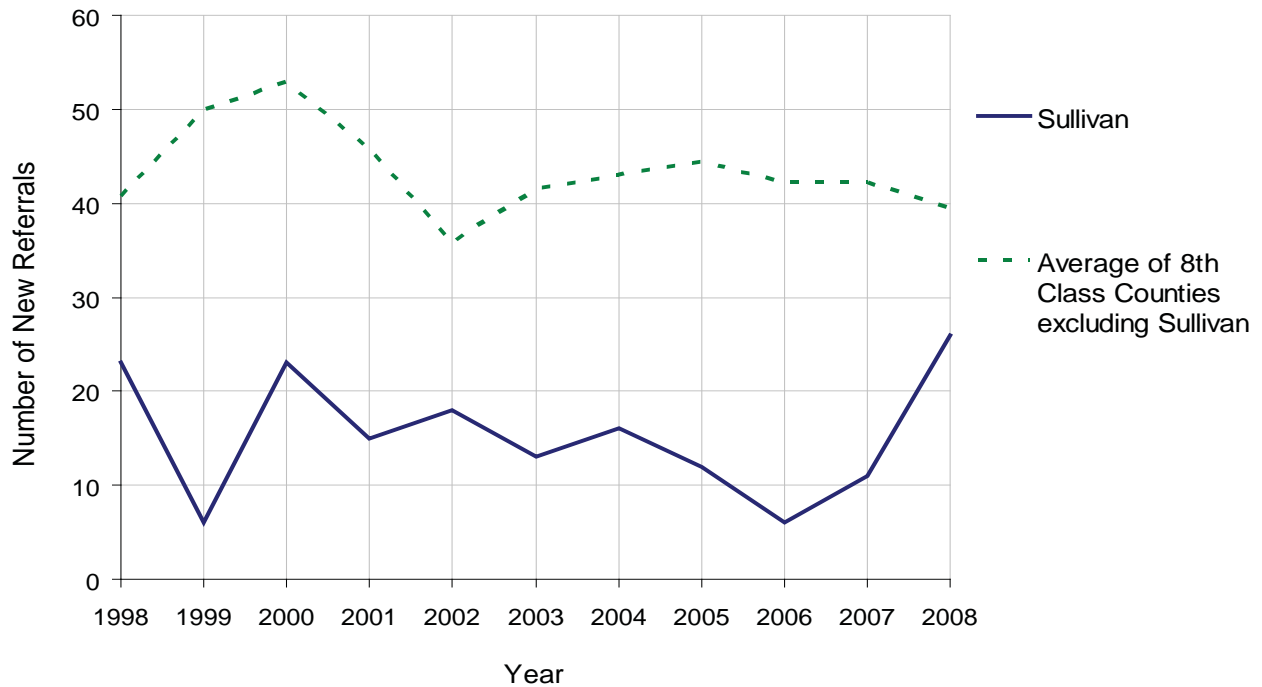
# SULLIVAN COUNTY

2008 Population Estimate: 6,124  
 Class of County: 8th  
 No. of Common Pleas Court Judgeships: 1  
 (Sullivan and Wyoming combined)



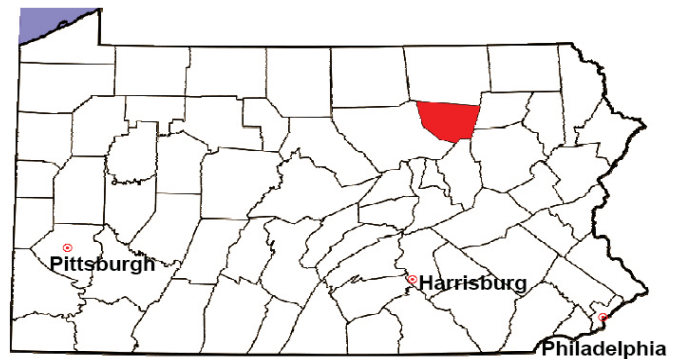
2008 Juvenile Delinquency	No. of Referrals	%
Cases Pending 1/1/08	5	
New Referrals in '08	26	
<b>Cases Available for Processing</b>	<b>31</b>	
Processed By:		
Judge	26	92.9%
Non-Judicial Officer	0	0.0%
Other	2	7.1%
<b>Cases Processed</b>	<b>28</b>	<b>100.0%</b>
<b>Cases Pending 12/31/08</b>	<b>3</b>	

Juvenile Delinquency New Referrals, 1998-2008



# SULLIVAN COUNTY

2008 Population Estimate: 6,124  
 Class of County: 8th  
 No. of Common Pleas Court Judgeships: 1  
 (Sullivan and Wyoming combined)



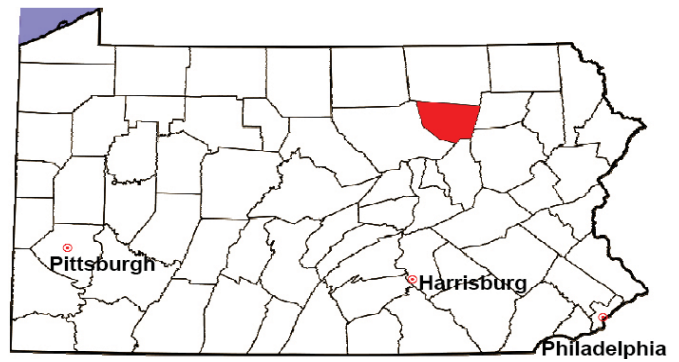
2008 Accounts	No. of Accounts	%
Cases Pending 1/1/08	0	
New Cases Filed in '08	1	
<b>Cases Available for Processing</b>	<b>1</b>	
Processed By:		
Contested before a Judge	0	0.0%
Contested before a Non-Judicial Officer	0	0.0%
Uncontested	1	100.0%
Other	0	0.0%
<b>Cases Processed</b>	<b>1</b>	<b>100.0%</b>
<b>Cases Pending 12/31/08</b>	<b>0</b>	

Accounts New Cases Filed, 1998-2008



# SULLIVAN COUNTY

2008 Population Estimate: 6,124  
 Class of County: 8th  
 No. of Common Pleas Court Judgeships: 1  
 (Sullivan and Wyoming combined)

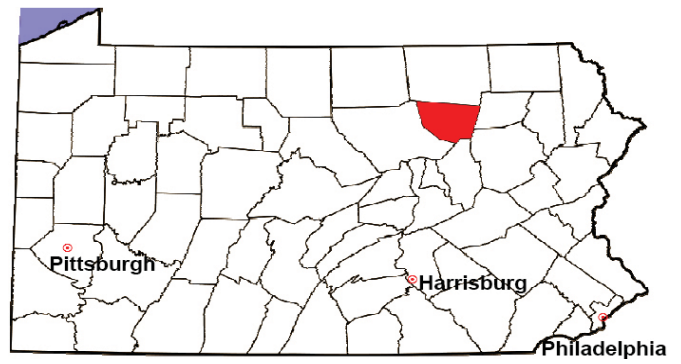


<b>2008 Adoptions</b>		No. of Cases	%
Cases Pending 1/1/08		1	
New Cases Filed in '08		0	
<b>Cases Available for Processing</b>		<b>1</b>	
Processed By:			
Contested before a Judge	Granted	0	0.0%
	Denied	0	0.0%
Uncontested	Granted	1	100.0%
	Denied	0	0.0%
Other		0	0.0%
<b>Cases Processed</b>		<b>1</b>	<b>100.0%</b>
<b>Cases Pending 12/31/08</b>		<b>0</b>	

Note: Prior to 2008, each petition was counted as one new case, regardless of the number of children listed on the petition. Starting in 2008, each child listed on a petition is counted as a separate case. Therefore, statistics for 2008 should not be compared with those for previous years.

# SULLIVAN COUNTY

2008 Population Estimate: 6,124  
 Class of County: 8th  
 No. of Common Pleas Court Judgeships: 1  
 (Sullivan and Wyoming combined)



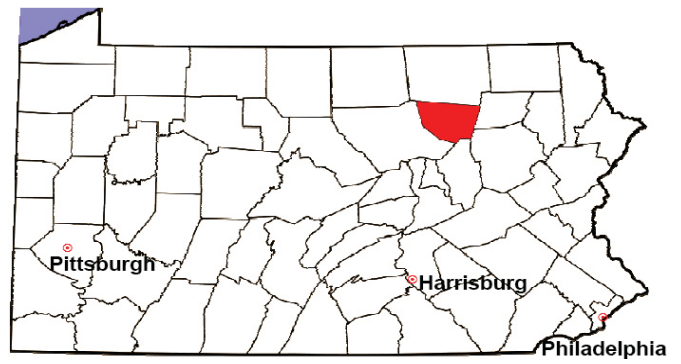
2008 Relinquishments/Terminations	No. of Petitions	%
Cases Pending 1/1/08	0	
New Cases Filed in '08	0	
<b>Cases Available for Processing</b>	<b>0</b>	
Processed By:		
Contested before a Judge	0	
Uncontested	0	
Other	0	
<b>Cases Processed</b>	<b>0</b>	
<b>Cases Pending 12/31/08</b>	<b>0</b>	

Relinquishments/Terminations New Cases Filed, 1998-2008



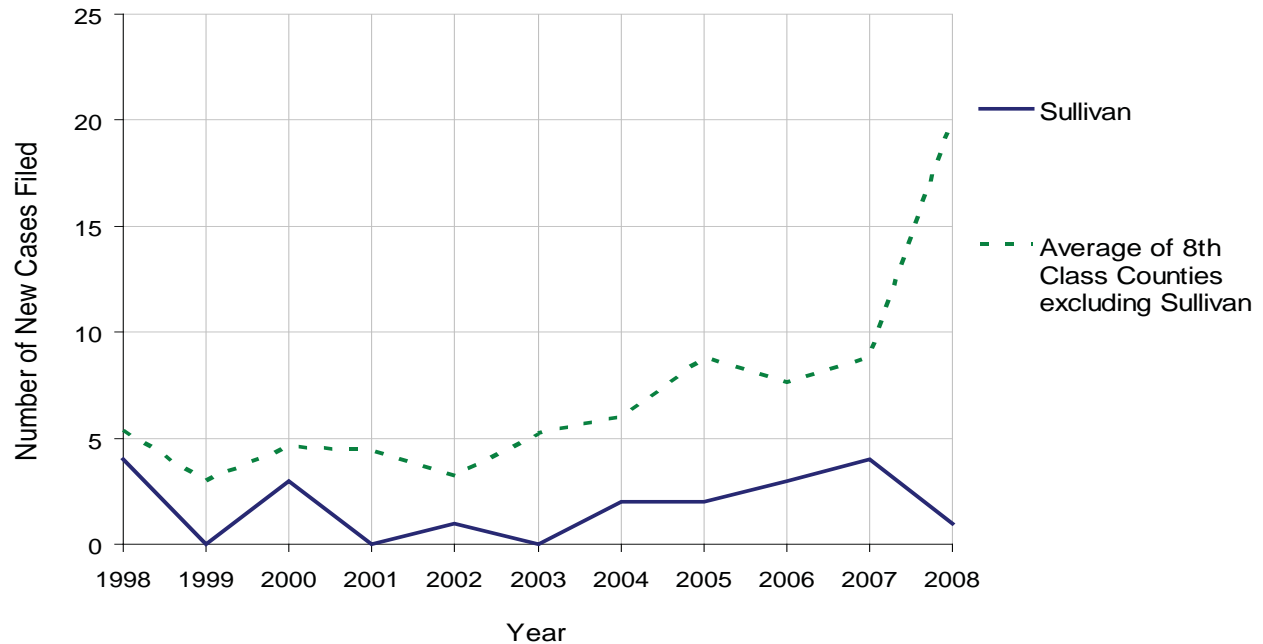
# SULLIVAN COUNTY

2008 Population Estimate: 6,124  
 Class of County: 8th  
 No. of Common Pleas Court Judgeships: 1  
 (Sullivan and Wyoming combined)



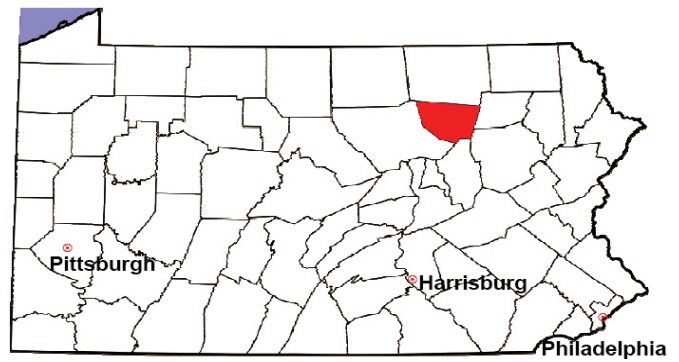
2008 Appointment of Guardians	No. of Petitions	%
Cases Pending 1/1/08	0	
New Cases Filed in '08	1	
<b>Cases Available for Processing</b>	<b>1</b>	
Processed By:		
Contested before a Judge	0	
Uncontested	0	
Other	0	
<b>Cases Processed</b>	<b>0</b>	
<b>Cases Pending 12/31/08</b>	<b>1</b>	

Appointment of Guardians New Cases Filed, 1998-2008



# SULLIVAN COUNTY

2008 Population Estimate: 6,124  
 Class of County: 8th  
 No. of Common Pleas Court Judgeships: 1  
 (Sullivan and Wyoming combined)



2008 Jury Activity & Performance Measures		
A. Juror Days	88	
B. Number Sent to Voir Dire	66	
Voir Dire Attendance Rate $(B/A * 100)$		75.0%
C. Number of Voir Dires Started	2	
Juror Days Per Voir Dire Starts $(A/C)$		44
D. Number of Jurors Selected	40	
Juror Selection Rate $(D/B * 100)$		60.6%
E. Number of Jury Trials Started	2	
Juror Days Per Trial Starts $(A/E)$		44
Number of Voir Dires Not Resulting in Trial $(C-E)$		0
Percent Voir Dires Not Resulting in Trial $(C-E)/C * 100$		0.0%
F. Pool Days	2	
G. Zero Panel Days	0	
Percent Zero Panel Days $(G/F * 100)$		0.0%
H. Total Juror Fees Incurred	\$723	
Average Juror Fees Per Trial $(H/E)$		\$362

Average Juror Fees Per Trial, 1998-2008

