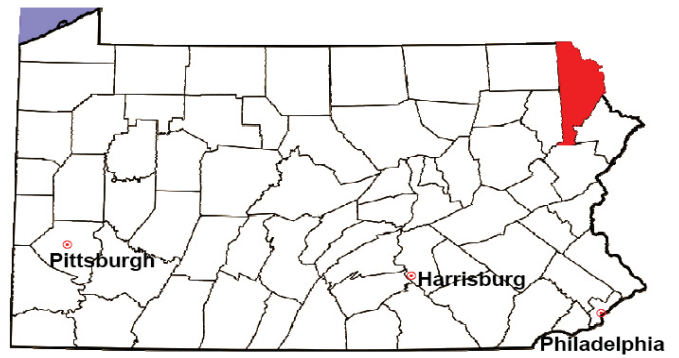


# WAYNE COUNTY

2008 Population Estimate: 52,016

Class of County: 6th

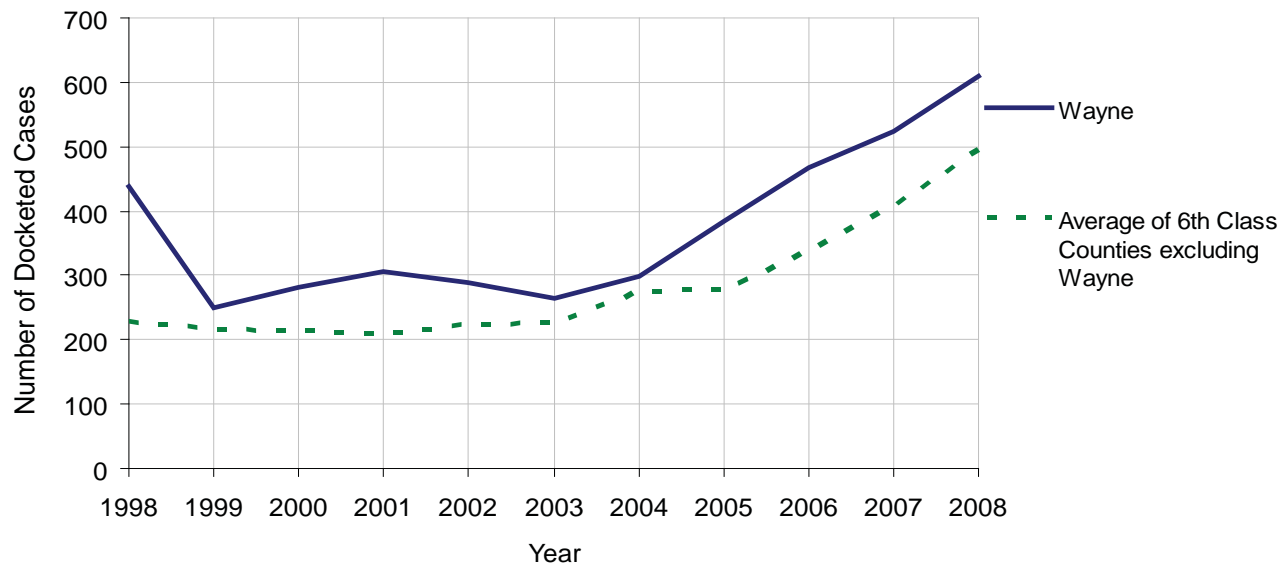
No. of Common Pleas Court Judgeships: 1



2008 Civil		Civil Action		
Docketed Cases		609		
Arbitrated Cases		76		
<b>Trial-Ready Cases:</b>		<b>Civil Action</b>	<b>Other</b>	<b>Total</b>
Cases Pending 1/1/08		35	2	37
Became Trial Ready in '08		241	64	305
Restored to Trial List		1	0	1
Appeals from Arbitration		20	0	20
<b>Cases Available for Trial</b>		<b>297</b>	<b>66</b>	<b>363</b>
<b>Disposed By:</b>				
Settlement		84	24	108
Non-Jury Trial		23	6	29
Jury Trial		2	0	2
Stricken from Trial List		11	1	12
Other		38	17	55
<b>Cases Disposed</b>		<b>158</b>	<b>48</b>	<b>206</b>
<b>Cases Pending 12/31/08</b>		<b>139</b>	<b>18</b>	<b>157</b>

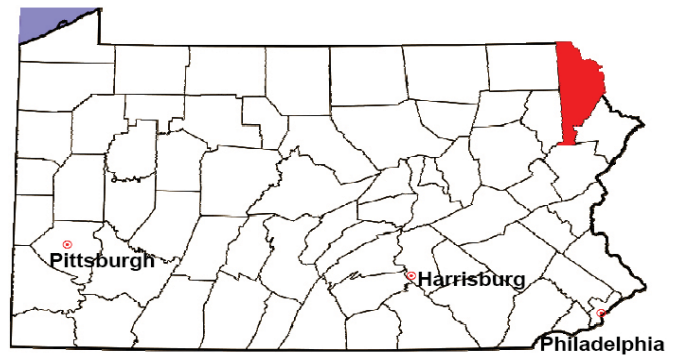
Age of Trial-Ready Cases as of 12/31/08 (Civil Action Only)		
0-6 months	108	78%
7-12 months	21	15%
13-18 months	4	3%
19-24 months	1	1%
25-30 months	0	0%
31-36 months	1	1%
Over 36 months	4	3%
<b>Total</b>	<b>139</b>	<b>100%</b>

Docketed Cases, 1998-2008



# WAYNE COUNTY

2008 Population Estimate: 52,016  
 Class of County: 6th  
 No. of Common Pleas Court Judgeships: 1



<b>2008 Protection From Abuse</b>	No. of Petitions	%
Cases Pending 1/1/08	12	
New Cases Filed in '08	188	
<b>Cases Available for Processing</b>	<b>200</b>	
Processed By:		
Final Order After Hearing	52	26.4%
Final Order by Stipulation or Agreement	79	40.1%
Dismissal	15	7.6%
Withdrawal	46	23.4%
Other	5	2.5%
<b>Cases Processed</b>	<b>197</b>	<b>100.0%</b>
<b>Cases Pending 12/31/08</b>	<b>3</b>	

PFA New Cases Filed, 1999-2008



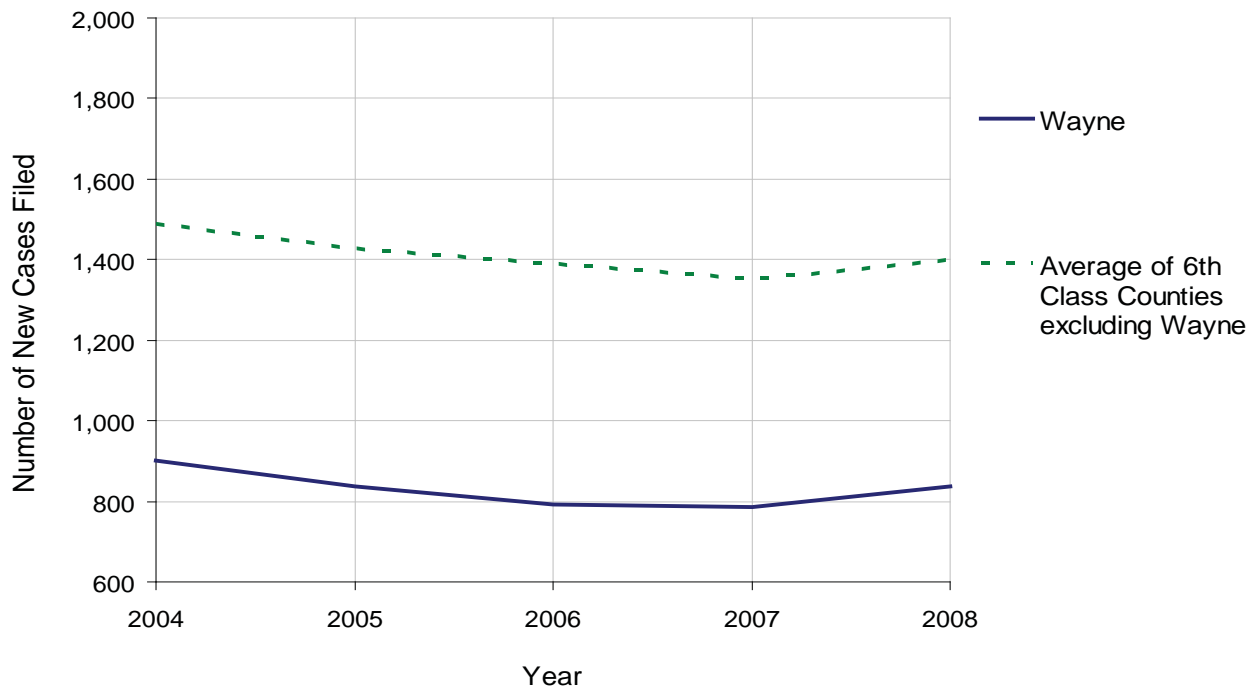
# WAYNE COUNTY

2008 Population Estimate: 52,016  
 Class of County: 6th  
 No. of Common Pleas Court Judgeships: 1



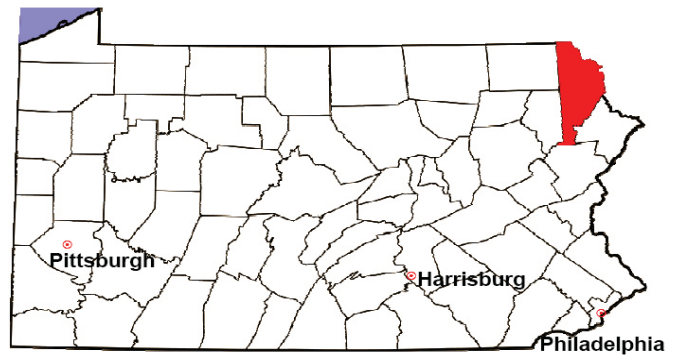
<b>2008 Spousal &amp; Child Support</b>	No. of Petitions	%
Cases Pending 1/1/08	138	
New Cases Filed in '08	836	
Dockets Transferred In (+)	9	
Dockets Transferred Out (-)	6	
<b>Cases Available for Processing</b>	<b>977</b>	
Processed By:		
Judge	36	4.2%
Intake Officer	823	95.8%
Hearing Officer	0	0.0%
Other	0	0.0%
<b>Cases Processed</b>	<b>859</b>	<b>100.0%</b>
<b>Cases Pending 12/31/08</b>	<b>118</b>	

Spousal & Child Support New Cases Filed, 1998-2008



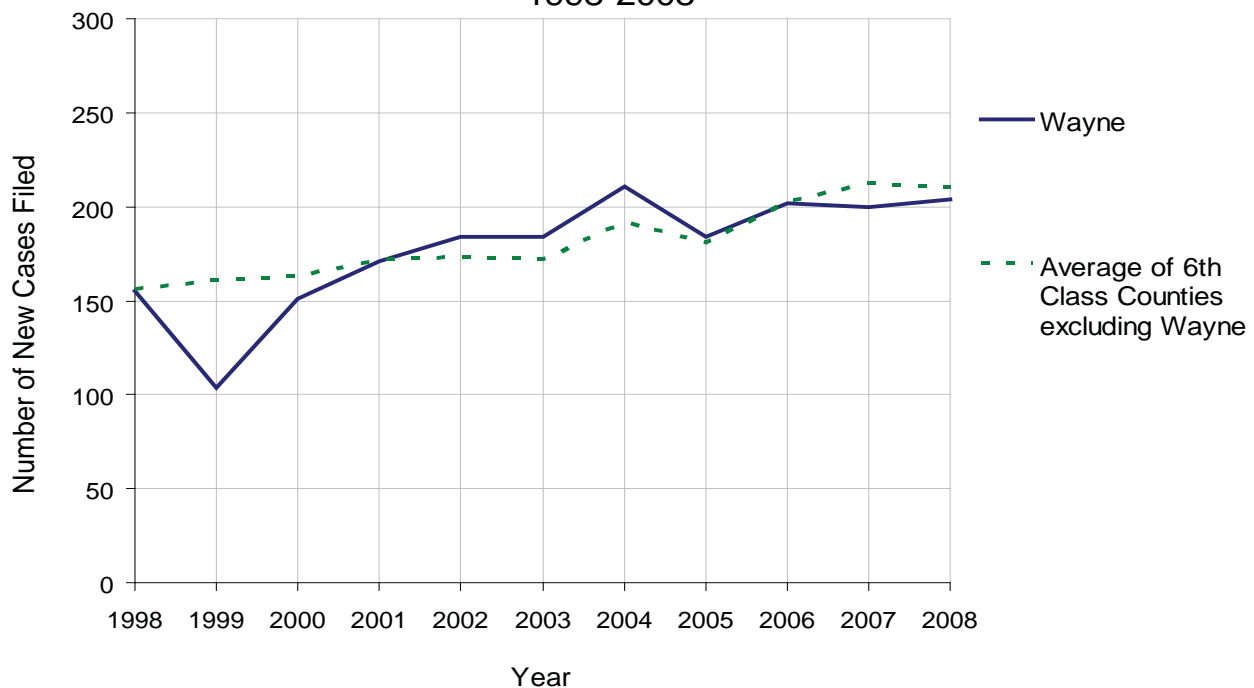
# WAYNE COUNTY

2008 Population Estimate: 52,016  
 Class of County: 6th  
 No. of Common Pleas Court Judgeships: 1



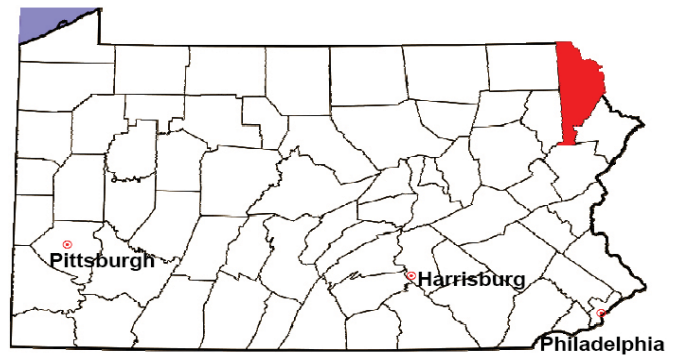
<b>2008 Custody/Partial Custody/Visitation</b>	No. of Petitions	%
Cases Pending 1/1/08	65	
New Cases Filed in '08	204	
<b>Cases Available for Processing</b>	<b>269</b>	
Processed By:		
Judge	15	8.3%
<b>Non-Judicial Officer</b>	<b>117</b>	<b>64.6%</b>
Other	49	27.1%
<b>Cases Processed</b>	<b>181</b>	<b>100.0%</b>
<b>Cases Pending 12/31/08</b>	<b>88</b>	

Custody/Partial Custody/Visitation New Cases Filed  
 1998-2008



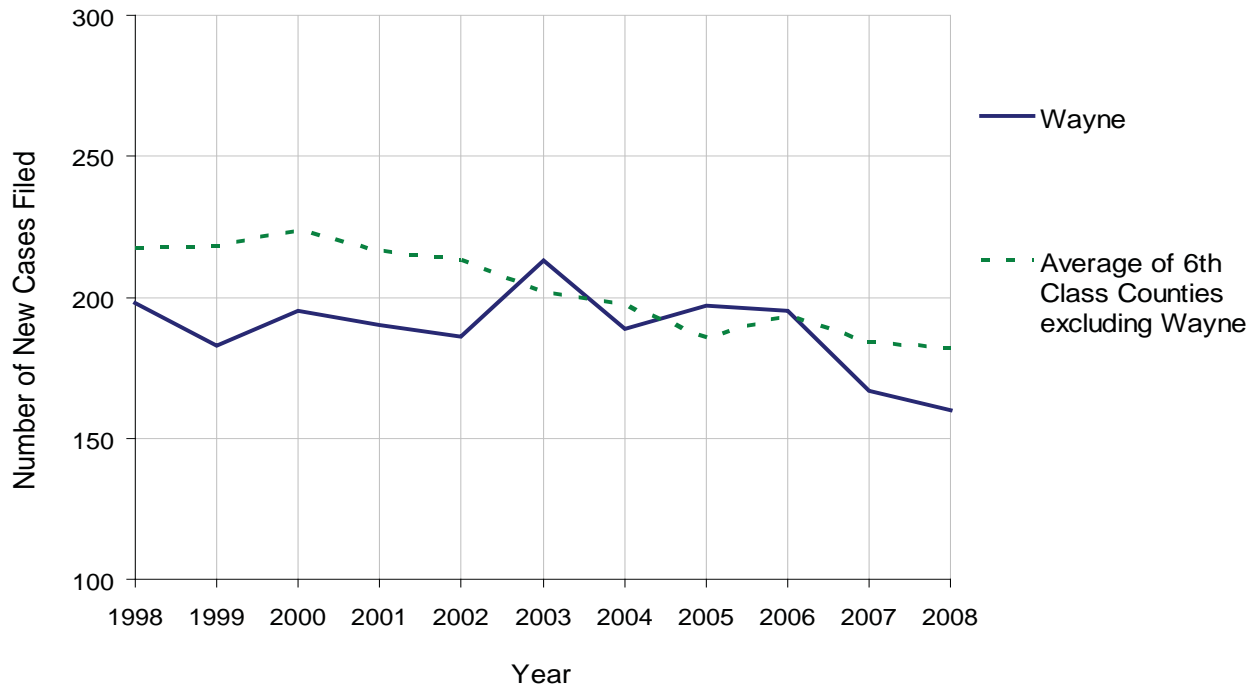
# WAYNE COUNTY

2008 Population Estimate: 52,016  
 Class of County: 6th  
 No. of Common Pleas Court Judgeships: 1



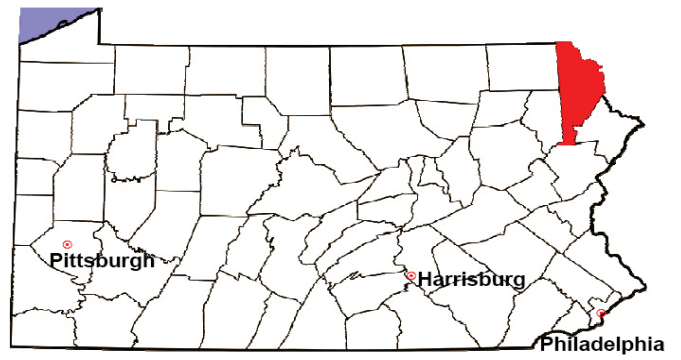
<b>2008 Divorce</b>	No. of Petitions	%
Cases Pending 1/1/08	189	
New Cases Filed in '08	160	
<b>Cases Available for Processing</b>	<b>349</b>	
Processed By:		
Contested Before a Judge	10	6.4%
Contested Before a Master	19	12.2%
Uncontested	101	64.7%
Other	26	16.7%
<b>Cases Processed</b>	<b>156</b>	<b>100.0%</b>
<b>Cases Pending 12/31/08</b>	<b>193</b>	

Divorce New Cases Filed, 1998-2008



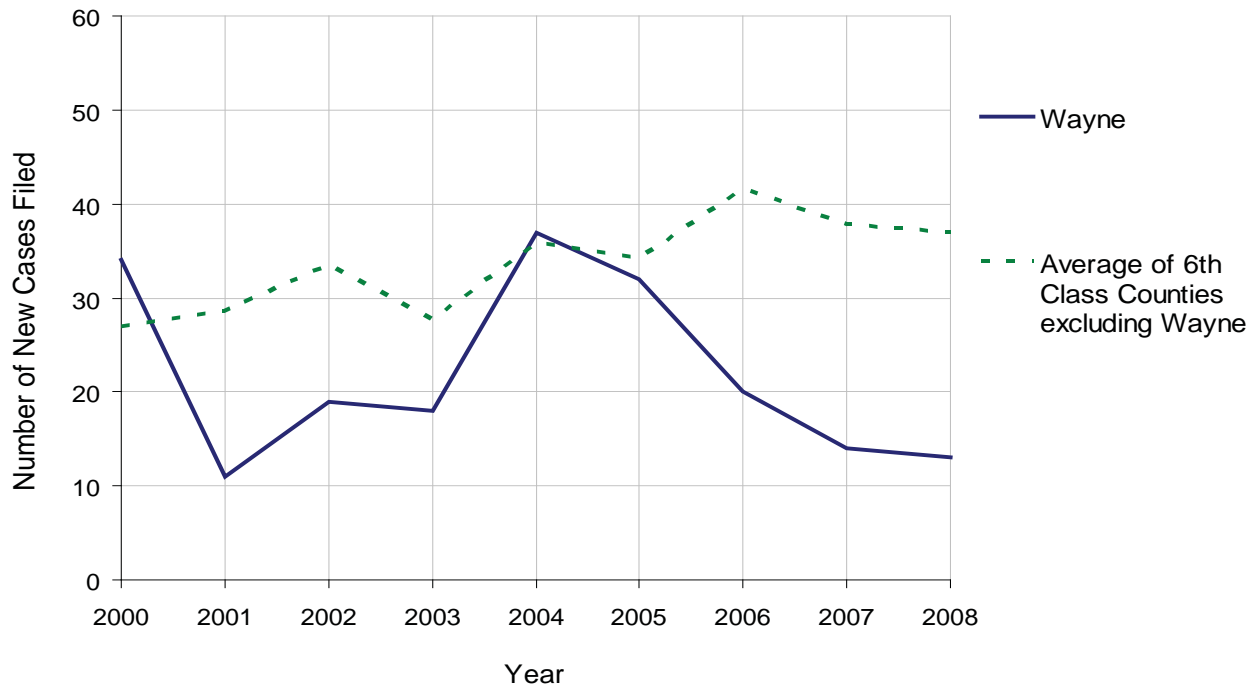
# WAYNE COUNTY

2008 Population Estimate: 52,016  
 Class of County: 6th  
 No. of Common Pleas Court Judgeships: 1



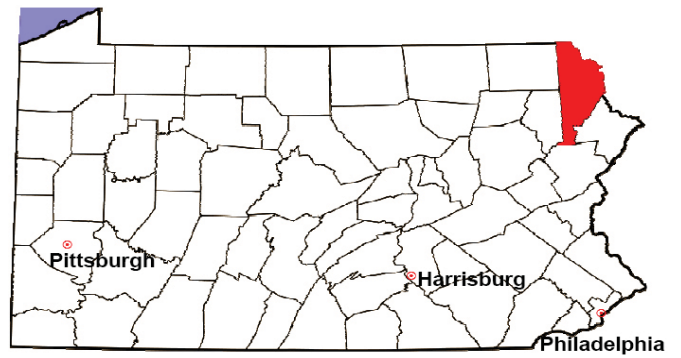
<b>2008 Juvenile Dependency Abuse/Neglect</b>	<b>No. of Petitions</b>	<b>%</b>
Cases Pending 1/1/08	0	
New Cases Filed in '08	13	
<b>Cases Available for Processing</b>	<b>13</b>	
Processed By:		
Judge	12	92.3%
Non-Judicial Officer	1	7.7%
Other	0	0.0%
<b>Cases Processed</b>	<b>13</b>	<b>100.0%</b>
<b>Cases Pending 12/31/08</b>	<b>0</b>	

Abuse/Neglect New Cases Filed, 2000-2008



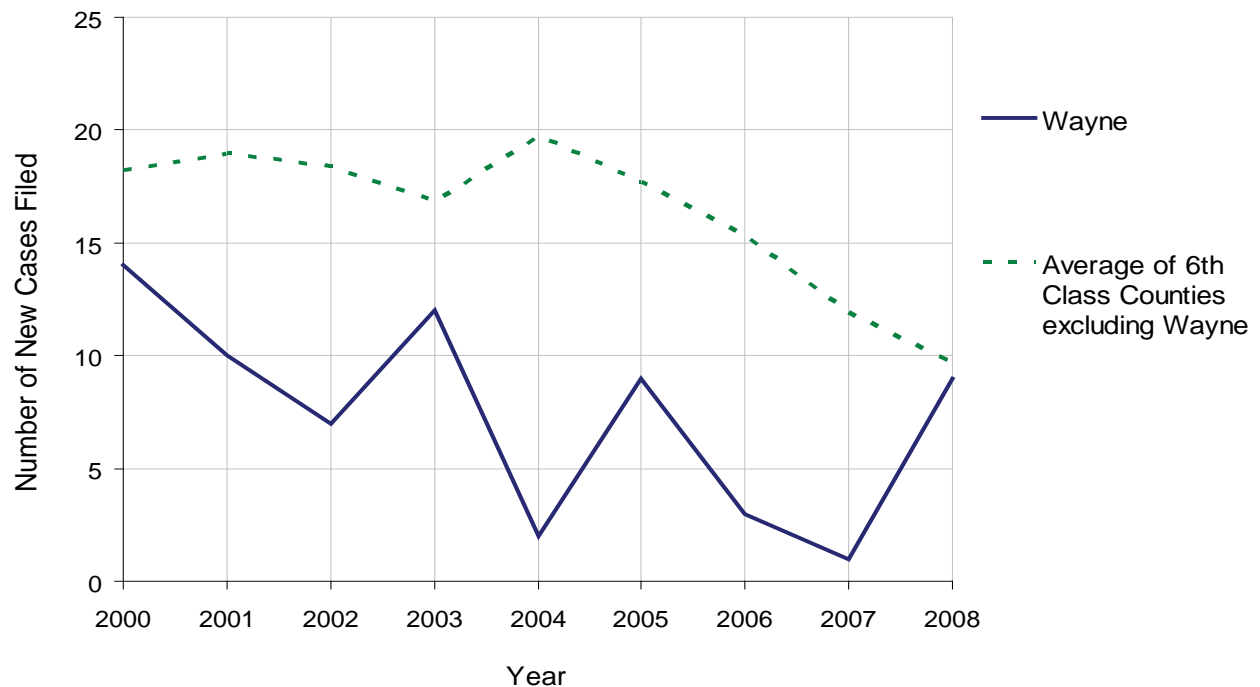
# WAYNE COUNTY

2008 Population Estimate: 52,016  
 Class of County: 6th  
 No. of Common Pleas Court Judgeships: 1



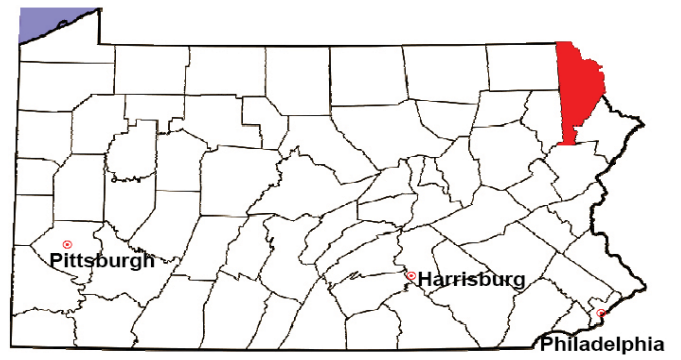
2008 Juvenile Dependency Status Offenses	No. of Petitions	%
Cases Pending 1/1/08	0	
New Cases Filed in '08	9	
<b>Cases Available for Processing</b>	<b>9</b>	
Processed By:		
Judge	8	88.9%
Non-Judicial Officer	0	0.0%
Other	1	11.1%
<b>Cases Processed</b>	<b>9</b>	<b>100.0%</b>
<b>Cases Pending 12/31/08</b>	<b>0</b>	

Status Offenses New Cases Filed, 2000-2008



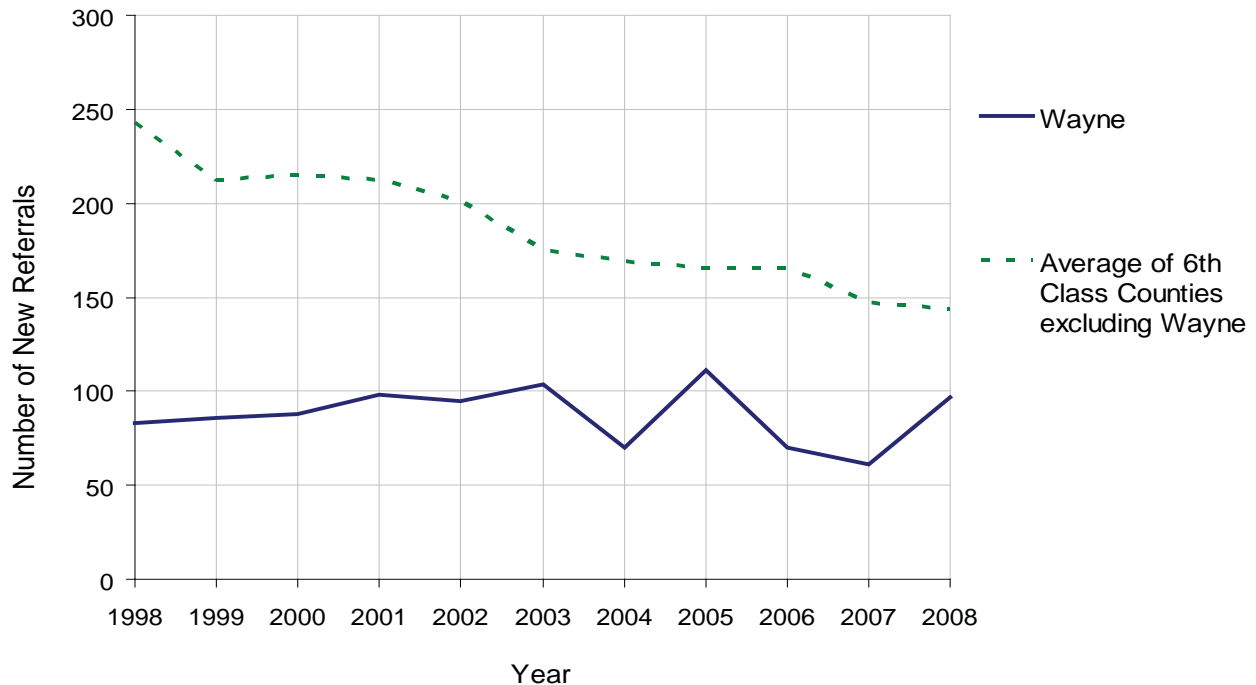
# WAYNE COUNTY

2008 Population Estimate: 52,016  
 Class of County: 6th  
 No. of Common Pleas Court Judgeships: 1



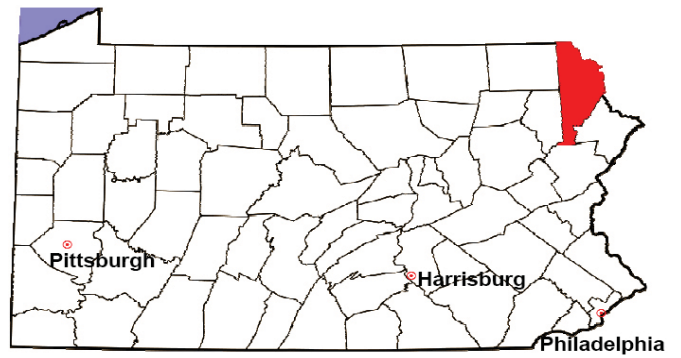
2008 Juvenile Delinquency	No. of Referrals	%
Cases Pending 1/1/08	0	
New Referrals in '08	97	
<b>Cases Available for Processing</b>	<b>97</b>	
Processed By:		
Judge	72	80.9%
Non-Judicial Officer	9	10.1%
Other	8	9.0%
<b>Cases Processed</b>	<b>89</b>	<b>100.0%</b>
<b>Cases Pending 12/31/08</b>	<b>8</b>	

Juvenile Delinquency New Referrals, 1998-2008



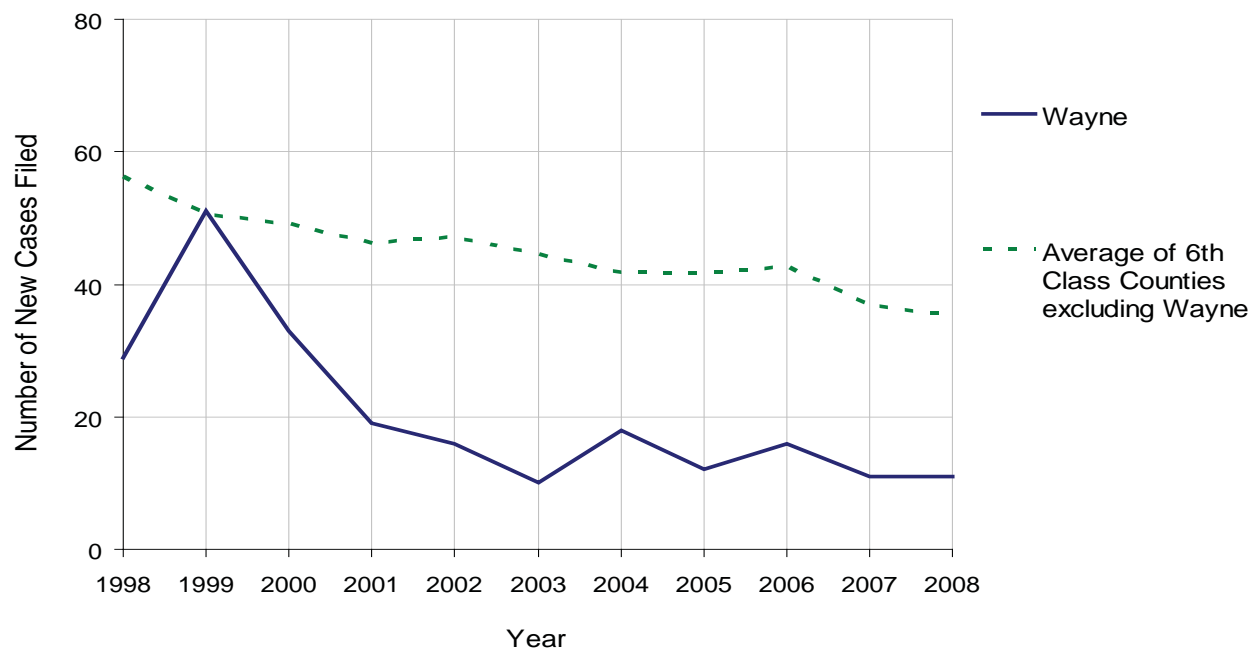
# WAYNE COUNTY

2008 Population Estimate: 52,016  
 Class of County: 6th  
 No. of Common Pleas Court Judgeships: 1



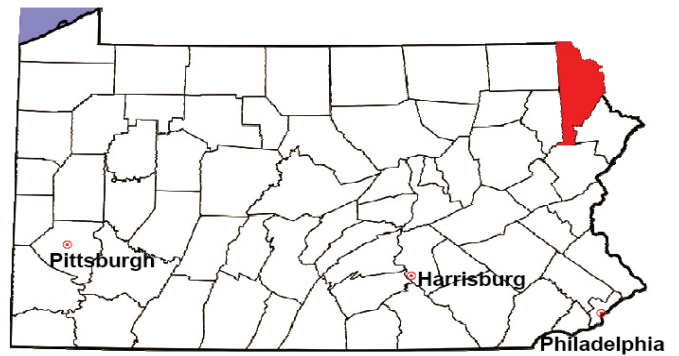
2008 Accounts	No. of Accounts	%
Cases Pending 1/1/08	4	
New Cases Filed in '08	11	
<b>Cases Available for Processing</b>	<b>15</b>	
Processed By:		
Contested before a Judge	0	0.0%
Contested before a Non-Judicial Officer	0	0.0%
Uncontested	11	100.0%
Other	0	0.0%
<b>Cases Processed</b>	<b>11</b>	<b>100.0%</b>
<b>Cases Pending 12/31/08</b>	<b>4</b>	

Accounts New Cases Filed, 1998-2008



# WAYNE COUNTY

2008 Population Estimate: 52,016  
 Class of County: 6th  
 No. of Common Pleas Court Judgeships: 1



<b>2008 Adoptions</b>		No. of Cases	%
Cases Pending 1/1/08		3	
New Cases Filed in '08		22	
<b>Cases Available for Processing</b>		<b>25</b>	
Processed By:			
Contested before a Judge	Granted	2	13.3%
	Denied	0	0.0%
Uncontested	Granted	13	86.7%
	Denied	0	0.0%
Other		0	0.0%
<b>Cases Processed</b>		<b>15</b>	<b>100.0%</b>
<b>Cases Pending 12/31/08</b>		<b>10</b>	

Note: Prior to 2008, each petition was counted as one new case, regardless of the number of children listed on the petition. Starting in 2008, each child listed on a petition is counted as a separate case. Therefore, statistics for 2008 should not be compared with those for previous years.

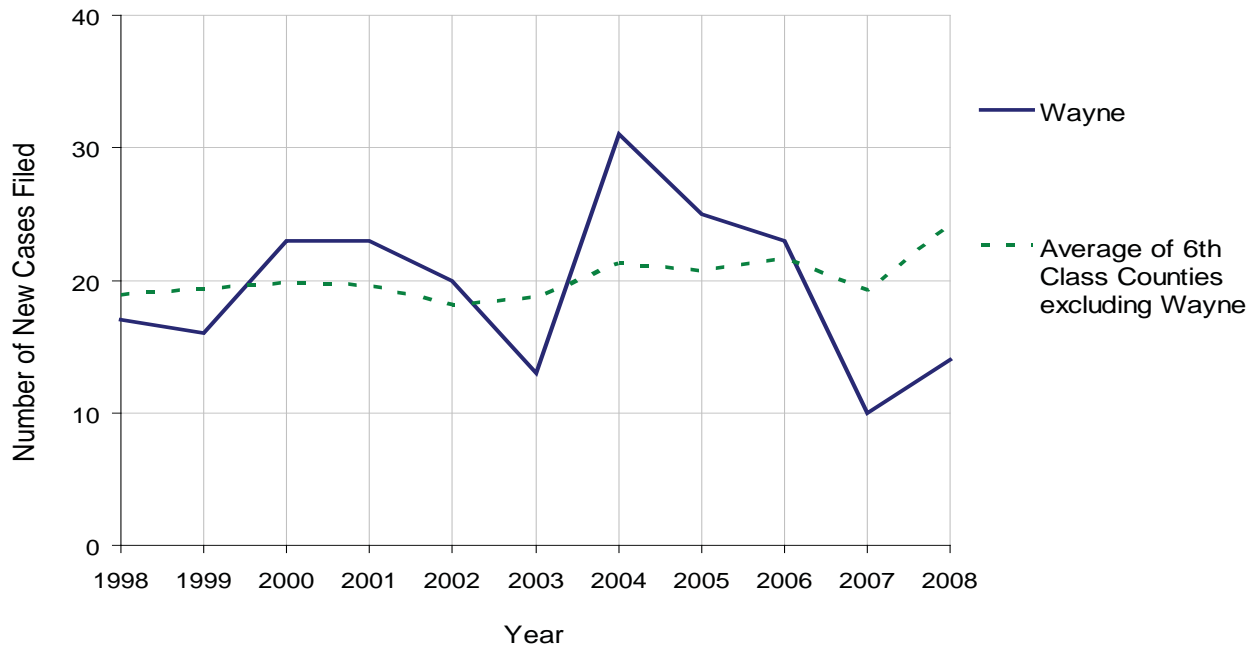
# WAYNE COUNTY

2008 Population Estimate: 52,016  
 Class of County: 6th  
 No. of Common Pleas Court Judgeships: 1



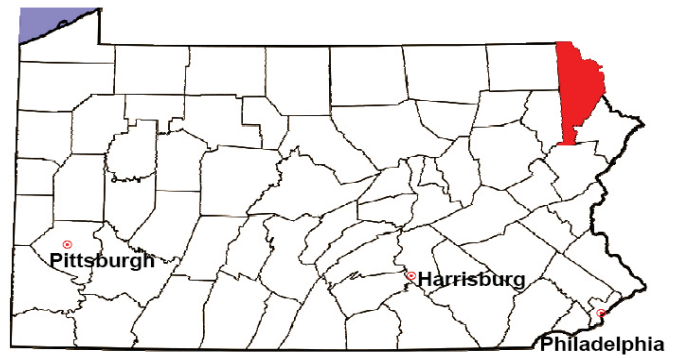
2008 Relinquishments/Terminations	No. of Petitions	%
Cases Pending 1/1/08	6	
New Cases Filed in '08	14	
<b>Cases Available for Processing</b>	<b>20</b>	
Processed By:		
Contested before a Judge	1	12.5%
Uncontested	6	75.0%
Other	1	12.5%
<b>Cases Processed</b>	<b>8</b>	<b>100.0%</b>
<b>Cases Pending 12/31/08</b>	<b>12</b>	

Relinquishments/Terminations New Cases Filed, 1998-2008



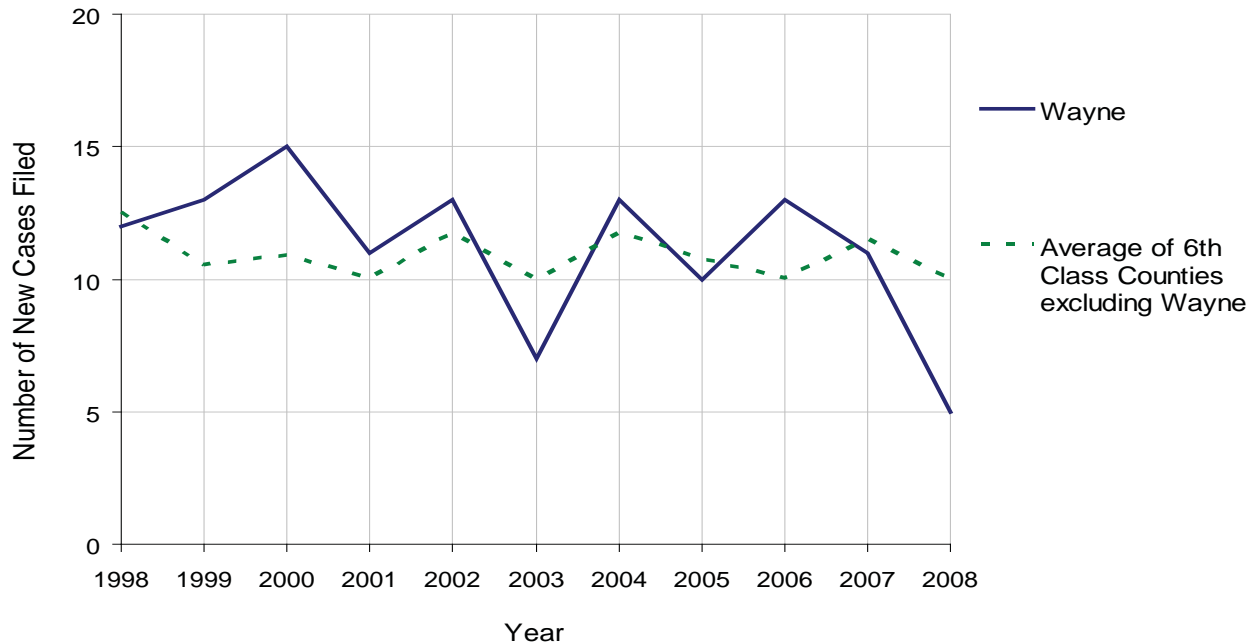
# WAYNE COUNTY

2008 Population Estimate: 52,016  
 Class of County: 6th  
 No. of Common Pleas Court Judgeships: 1



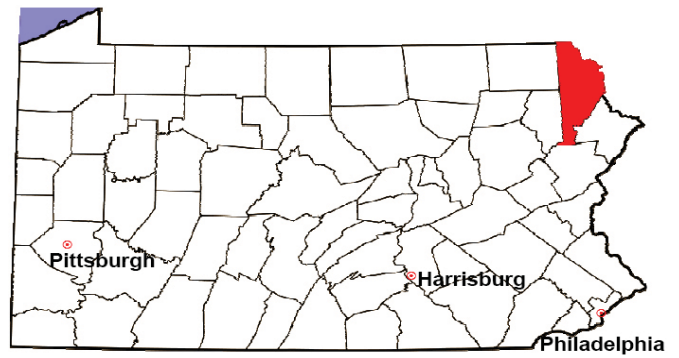
2008 Appointment of Guardians	No. of Petitions	%
Cases Pending 1/1/08	3	
New Cases Filed in '08	5	
<b>Cases Available for Processing</b>	<b>8</b>	
Processed By:		
Contested before a Judge	1	14.3%
Uncontested	3	42.9%
Other	3	42.9%
<b>Cases Processed</b>	<b>7</b>	<b>100.0%</b>
<b>Cases Pending 12/31/08</b>	<b>1</b>	

Appointment of Guardians New Cases Filed, 1998-2008



# WAYNE COUNTY

2008 Population Estimate: 52,016  
 Class of County: 6th  
 No. of Common Pleas Court Judgeships: 1



2008 Jury Activity & Performance Measures		
A. Juror Days	654	
B. Number Sent to Voir Dire	301	
Voir Dire Attendance Rate $(B/A * 100)$		46.0%
C. Number of Voir Dires Started	10	
Juror Days Per Voir Dire Starts $(A/C)$		65
D. Number of Jurors Selected	140	
Juror Selection Rate $(D/B * 100)$		46.5%
E. Number of Jury Trials Started	10	
Juror Days Per Trial Starts $(A/E)$		65
Number of Voir Dires Not Resulting in Trial $(C-E)$		0
Percent Voir Dires Not Resulting in Trial $(C-E)/C * 100$		0.0%
F. Pool Days	5	
G. Zero Panel Days	2	
Percent Zero Panel Days $(G/F * 100)$		40.0%
H. Total Juror Fees Incurred	\$13,298	
Average Juror Fees Per Trial $(H/E)$		\$1,330

Average Juror Fees Per Trial, 1998-2008

