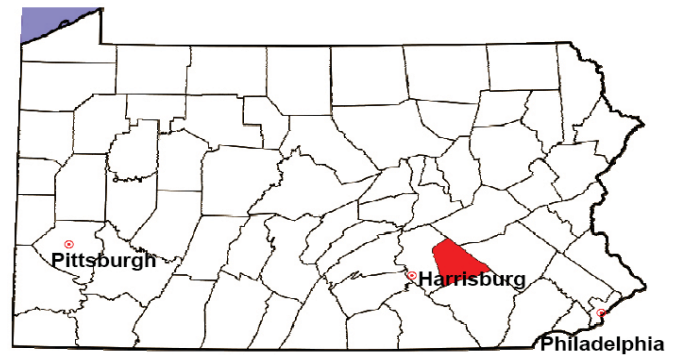


LEBANON COUNTY

2008 Population Estimate: 128,934

Class of County: 5th

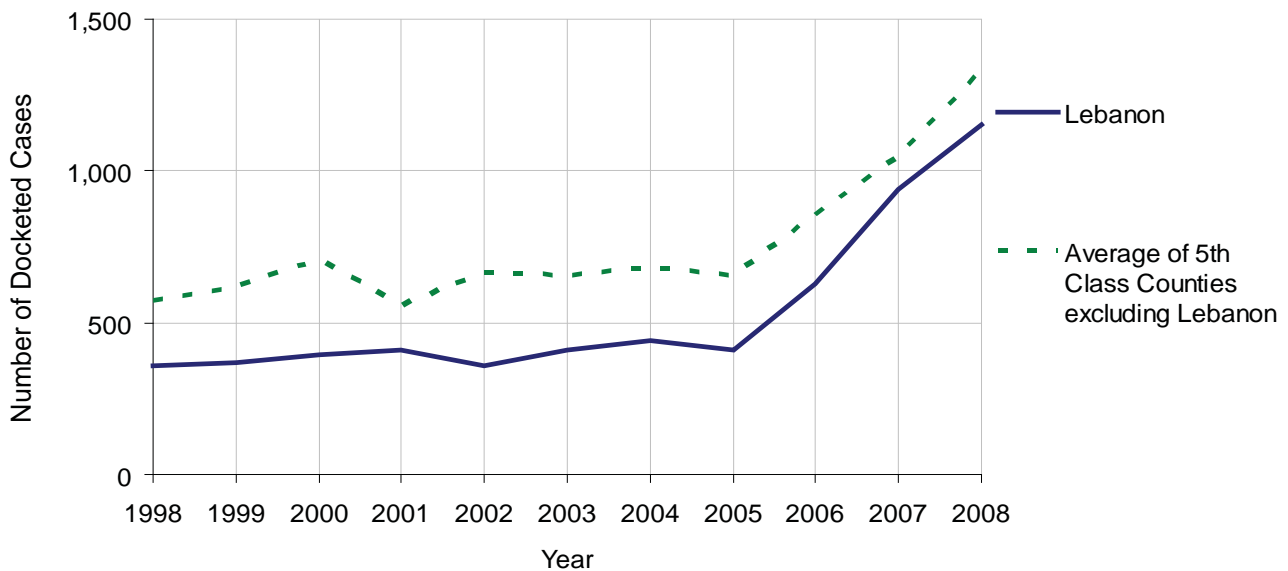
No. of Common Pleas Court Judgeships: 4



2008 Civil	Civil Action		
Docketed Cases	1,150		
Arbitrated Cases	32		
Trial-Ready Cases:	Civil Action	Other	Total
Cases Pending 1/1/08	14	3	17
Became Trial Ready in '08	25	5	30
Restored to Trial List	3	1	4
Appeals from Arbitration	7	0	7
Cases Available for Trial	49	9	58
Disposed By:			
Settlement	9	0	9
Non-Jury Trial	7	1	8
Jury Trial	1	0	1
Stricken from Trial List	5	2	7
Other	0	2	2
Cases Disposed	22	5	27
Cases Pending 12/31/08	27	4	31

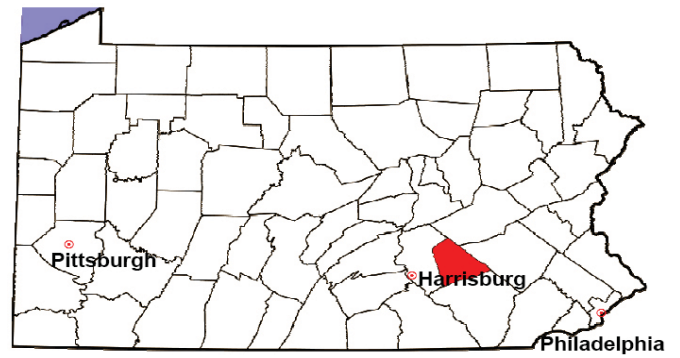
Age of Trial-Ready Cases as of 12/31/08 (Civil Action Only)		
0-6 months	12	44%
7-12 months	5	19%
13-18 months	3	11%
19-24 months	2	7%
25-30 months	0	0%
31-36 months	0	0%
Over 36 months	5	19%
Total	27	100%

Docketed Cases, 1998-2008



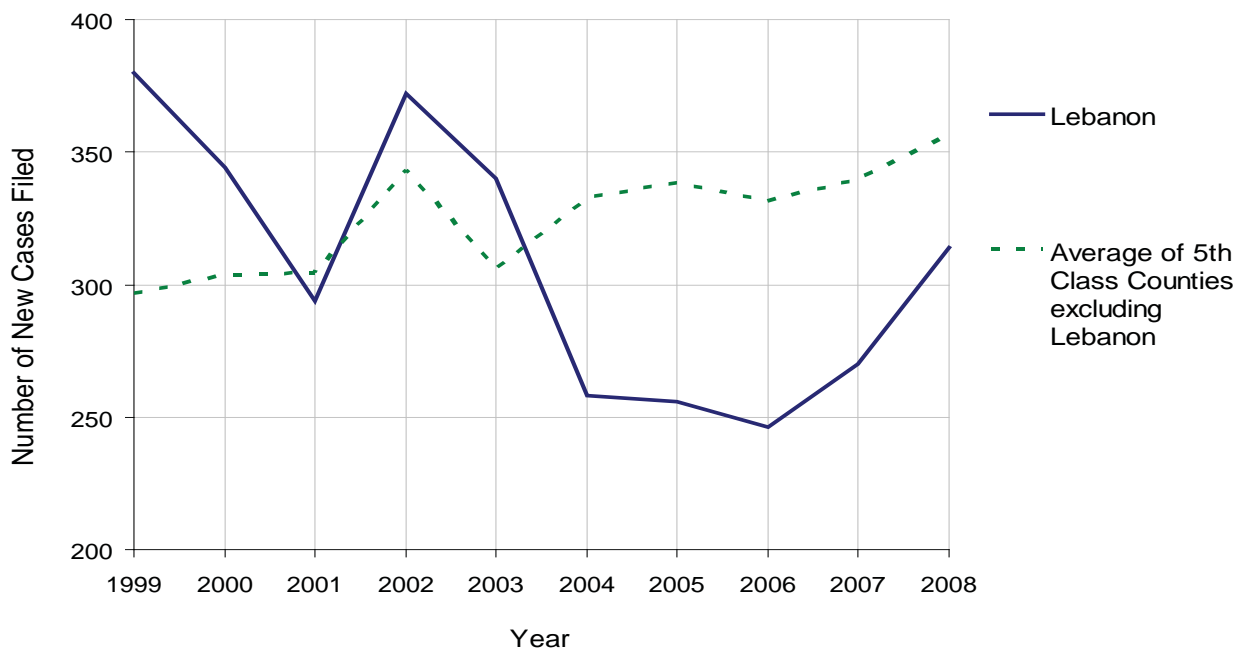
LEBANON COUNTY

2008 Population Estimate: 128,934
 Class of County: 5th
 No. of Common Pleas Court Judgeships: 4



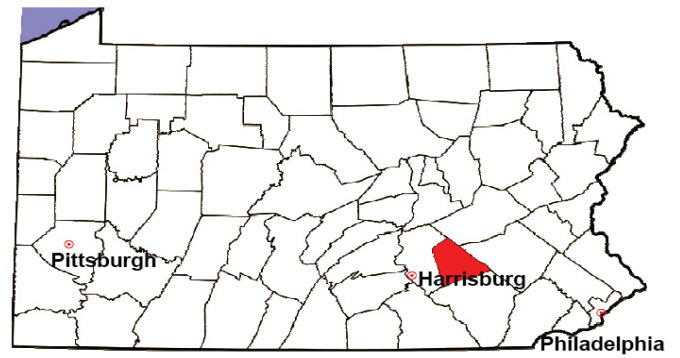
2008 Protection From Abuse	No. of Petitions	%
Cases Pending 1/1/08	32	
New Cases Filed in '08	314	
Cases Available for Processing	346	
Processed By:		
Final Order After Hearing	43	14.1%
Final Order by Stipulation or Agreement	112	36.6%
Dismissal	44	14.4%
Withdrawal	84	27.5%
Other	23	7.5%
Cases Processed	306	100.0%
Cases Pending 12/31/08	40	

PFA New Cases Filed, 1999-2008



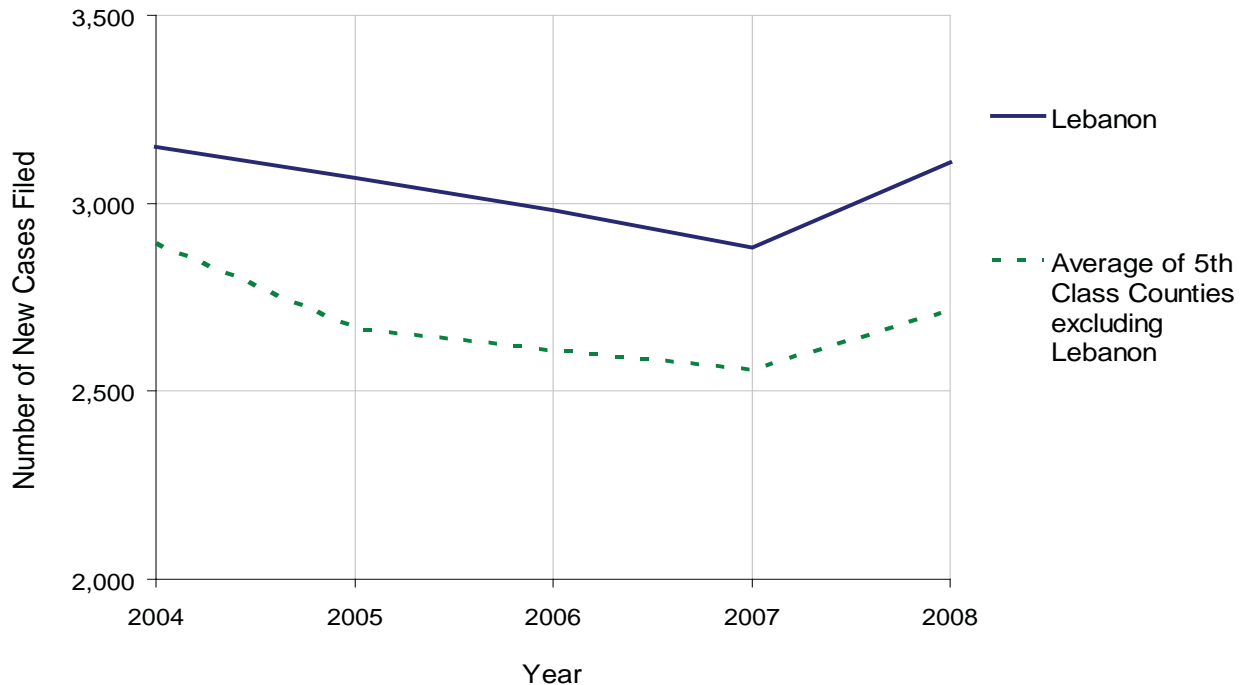
LEBANON COUNTY

2008 Population Estimate: 128,934
 Class of County: 5th
 No. of Common Pleas Court Judgeships: 4



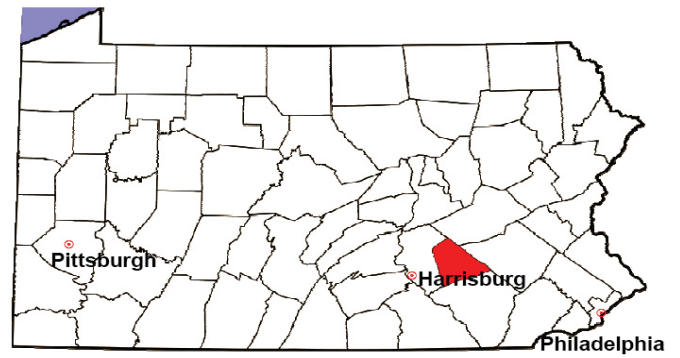
2008 Spousal & Child Support	No. of Petitions	%
Cases Pending 1/1/08	428	
New Cases Filed in '08	3,110	
Dockets Transferred In (+)	30	
Dockets Transferred Out (-)	47	
Cases Available for Processing	3,521	
Processed By:		
Judge	70	2.3%
Intake Officer	2,454	81.9%
Hearing Officer	473	15.8%
Other	0	0.0%
Cases Processed	2,997	100.0%
Cases Pending 12/31/08	524	

Spousal & Child Support New Cases Filed, 1998-2008



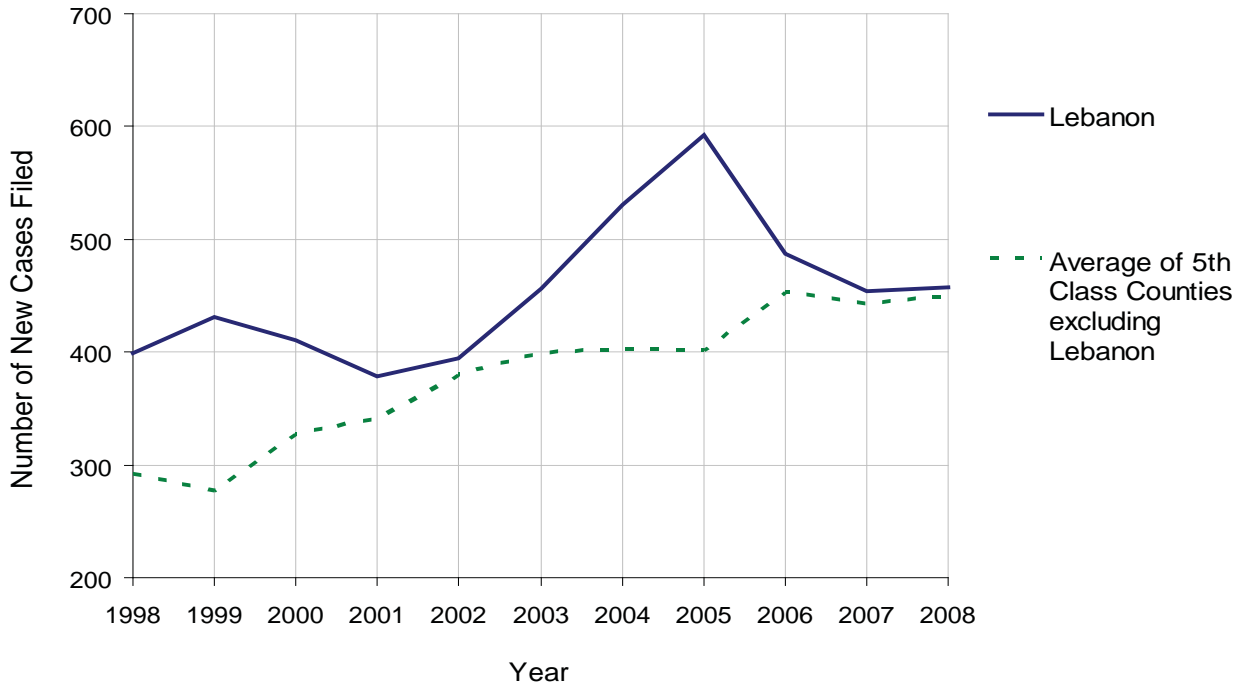
LEBANON COUNTY

2008 Population Estimate: 128,934
 Class of County: 5th
 No. of Common Pleas Court Judgeships: 4



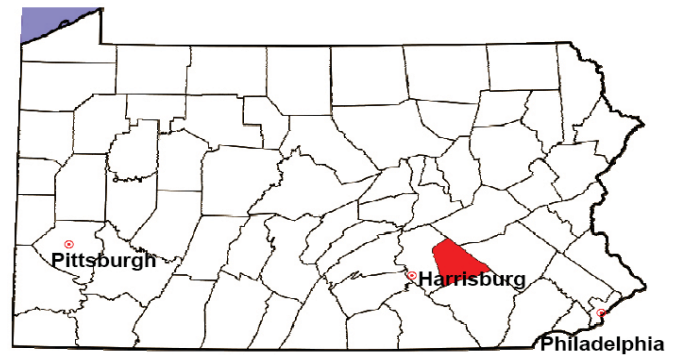
2008 Custody/Partial Custody/Visitation	No. of Petitions	%
Cases Pending 1/1/08	362	
New Cases Filed in '08	458	
Cases Available for Processing	820	
Processed By:		
Judge	15	3.7%
Non-Judicial Officer	263	64.9%
Other	127	31.4%
Cases Processed	405	100.0%
Cases Pending 12/31/08	415	

Custody/Partial Custody/Visitation New Cases Filed
 1998-2008



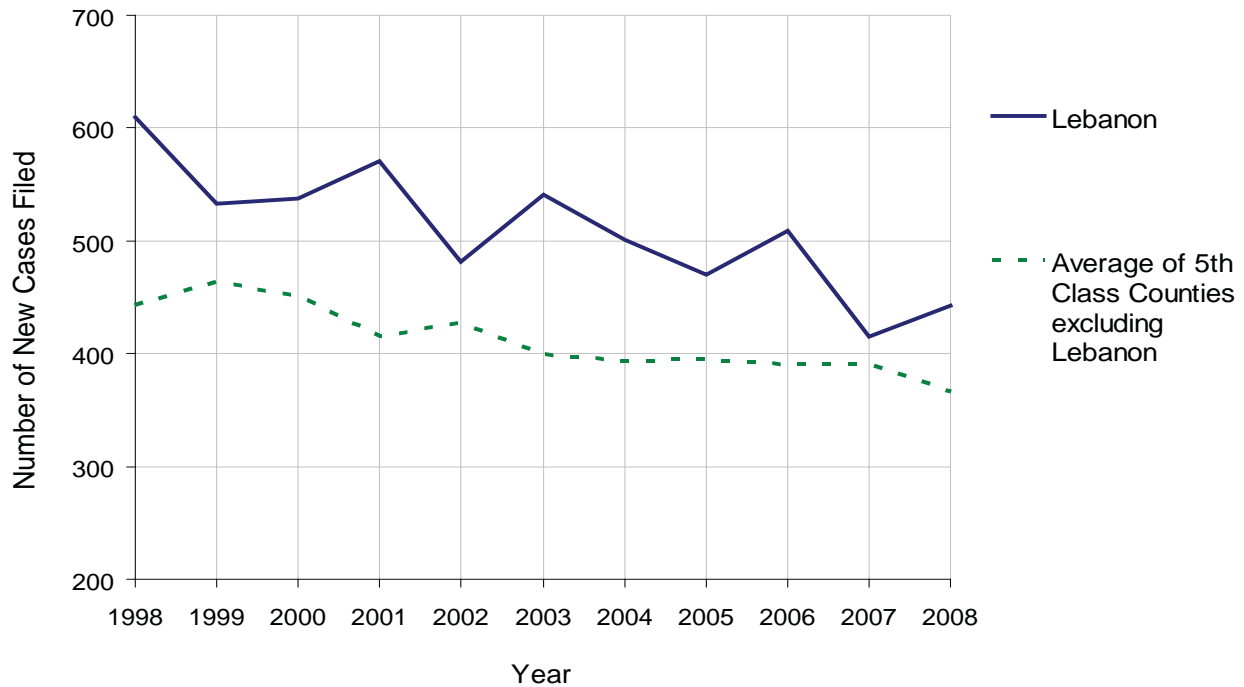
LEBANON COUNTY

2008 Population Estimate: 128,934
 Class of County: 5th
 No. of Common Pleas Court Judgeships: 4



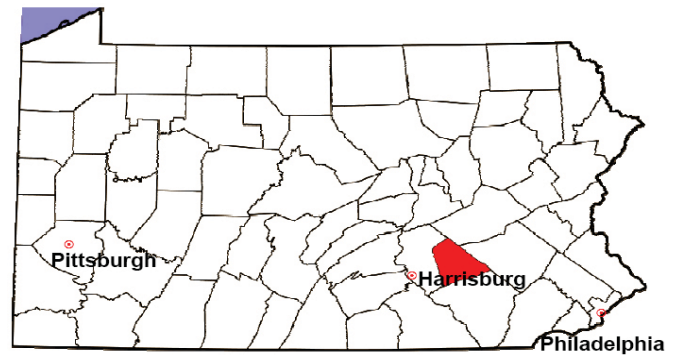
2008 Divorce	No. of Petitions	%
Cases Pending 1/1/08	992	
New Cases Filed in '08	443	
Cases Available for Processing	1,435	
Processed By:		
Contested Before a Judge	3	0.8%
Contested Before a Master	21	5.4%
Uncontested	363	93.1%
Other	3	0.8%
Cases Processed	390	100.0%
Cases Pending 12/31/08	1,045	

Divorce New Cases Filed, 1998-2008



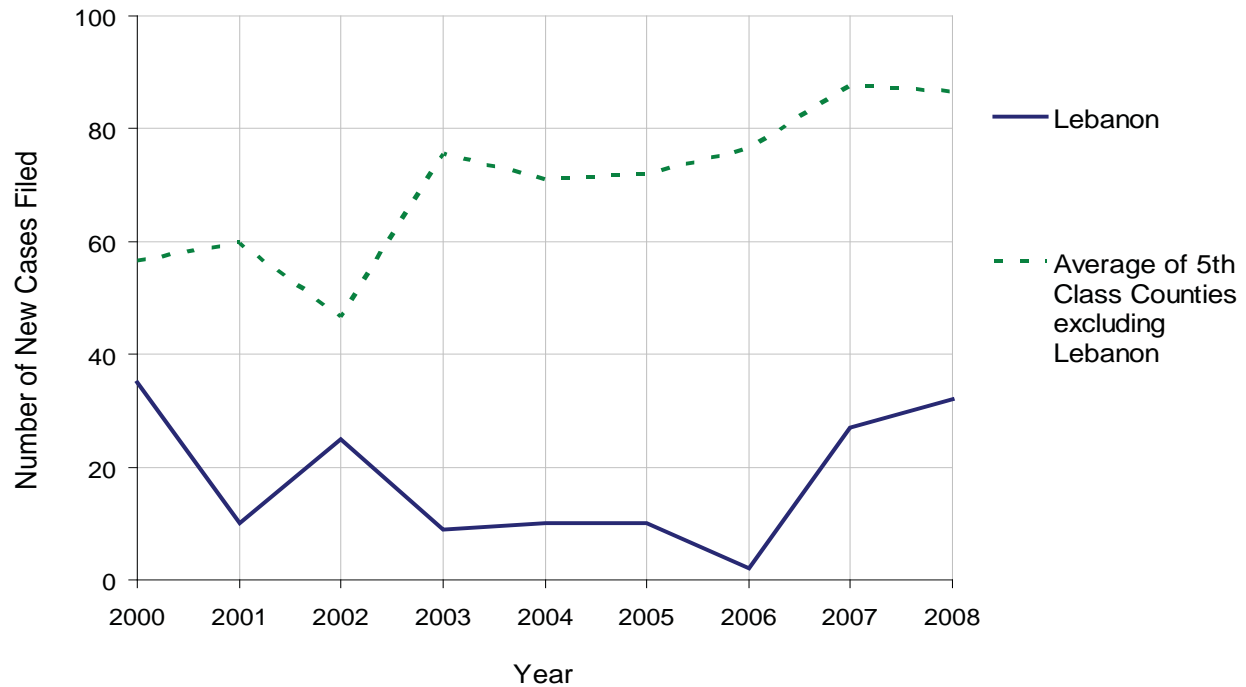
LEBANON COUNTY

2008 Population Estimate: 128,934
 Class of County: 5th
 No. of Common Pleas Court Judgeships: 4



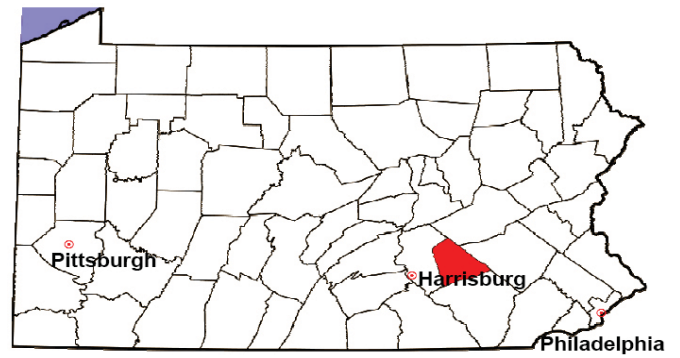
2008 Juvenile Dependency Abuse/Neglect	No. of Petitions	%
Cases Pending 1/1/08	1	
New Cases Filed in '08	32	
Cases Available for Processing	33	
Processed By:		
Judge	32	100.0%
Non-Judicial Officer	0	0.0%
Other	0	0.0%
Cases Processed	32	100.0%
Cases Pending 12/31/08	1	

Abuse/Neglect New Cases Filed, 2000-2008



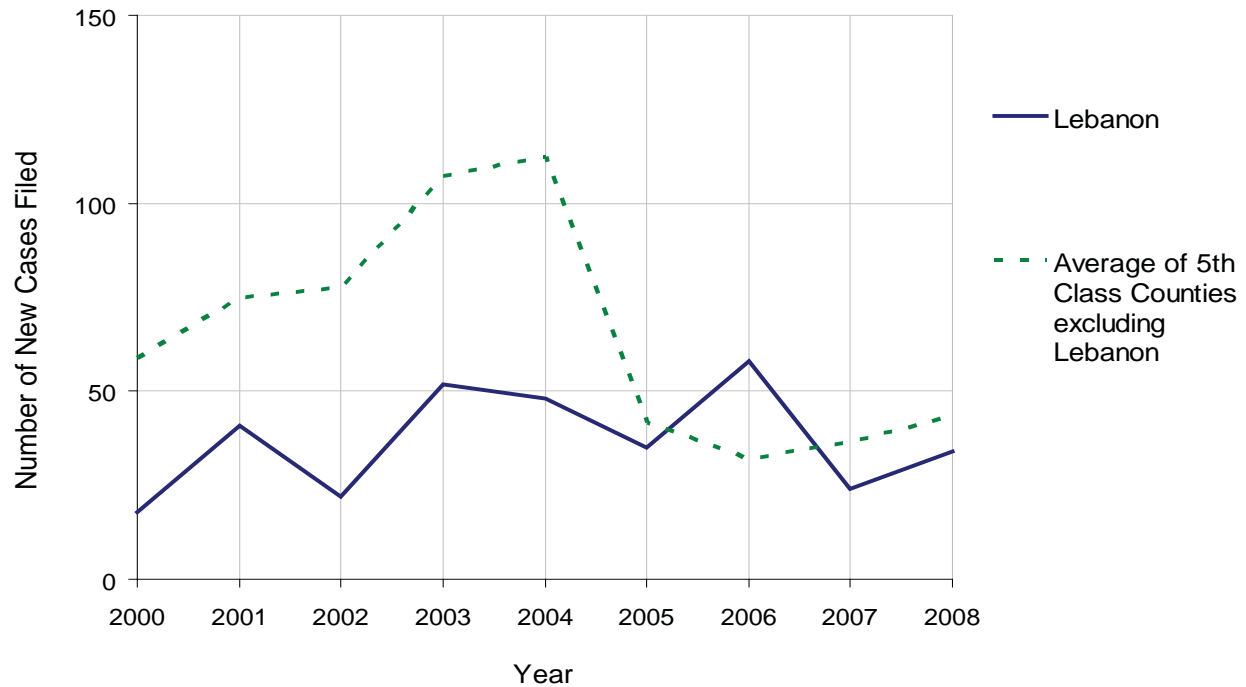
LEBANON COUNTY

2008 Population Estimate: 128,934
 Class of County: 5th
 No. of Common Pleas Court Judgeships: 4



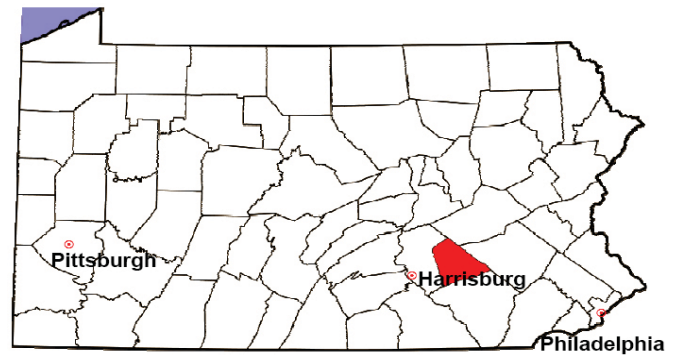
2008 Juvenile Dependency Status Offenses	No. of Petitions	%
Cases Pending 1/1/08	1	
New Cases Filed in '08	34	
Cases Available for Processing	35	
Processed By:		
Judge	34	100.0%
Non-Judicial Officer	0	0.0%
Other	0	0.0%
Cases Processed	34	100.0%
Cases Pending 12/31/08	1	

Status Offenses New Cases Filed, 2000-2008



LEBANON COUNTY

2008 Population Estimate: 128,934
 Class of County: 5th
 No. of Common Pleas Court Judgeships: 4



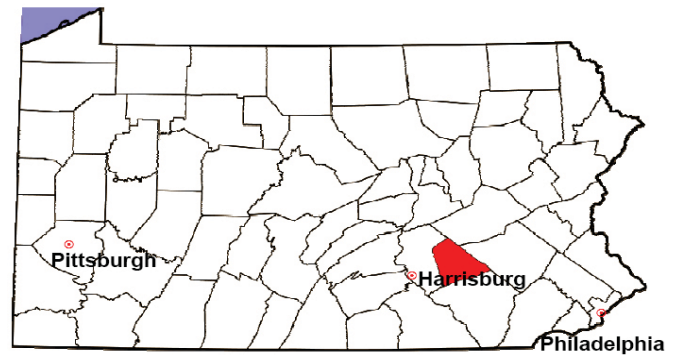
2008 Juvenile Delinquency	No. of Referrals	%
Cases Pending 1/1/08	36	
New Referrals in '08	428	
Cases Available for Processing	464	
Processed By:		
Judge	301	70.2%
Non-Judicial Officer	108	25.2%
Other	20	4.7%
Cases Processed	429	100.0%
Cases Pending 12/31/08	35	

Juvenile Delinquency New Referrals, 1998-2008



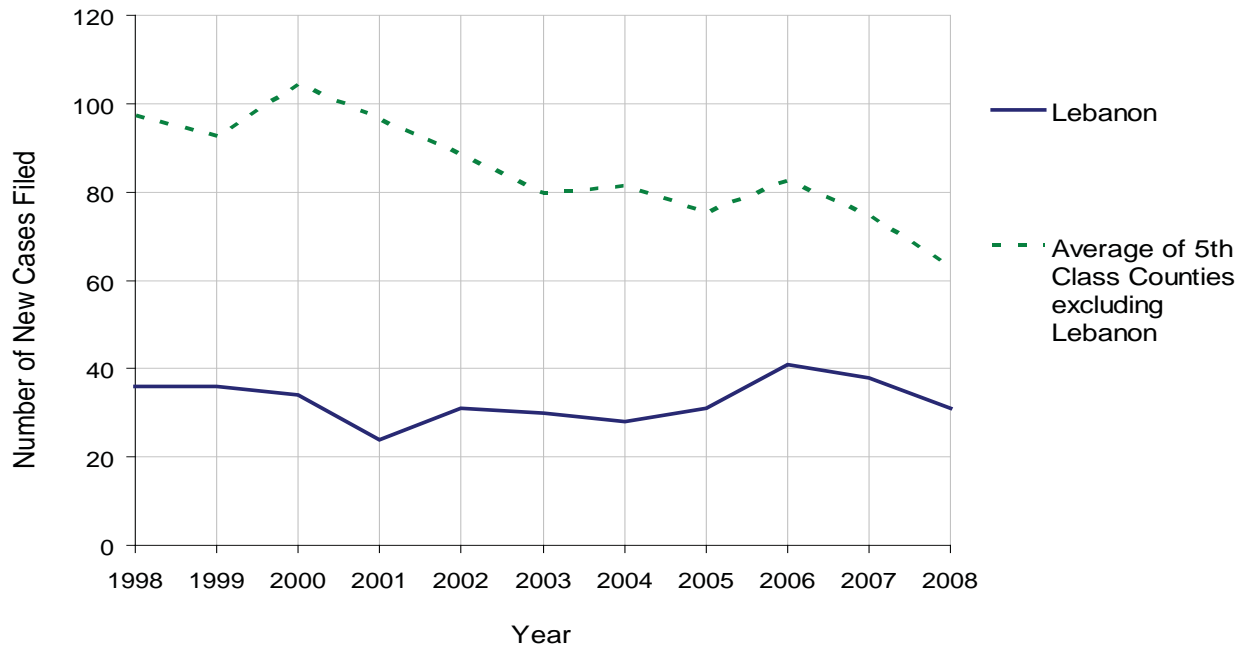
LEBANON COUNTY

2008 Population Estimate: 128,934
 Class of County: 5th
 No. of Common Pleas Court Judgeships: 4



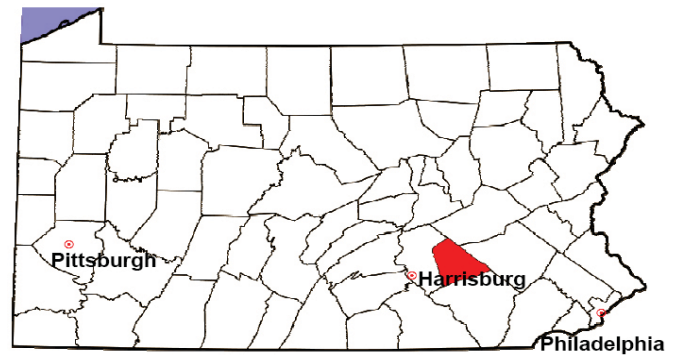
2008 Accounts	No. of Accounts	%
Cases Pending 1/1/08	15	
New Cases Filed in '08	31	
Cases Available for Processing	46	
Processed By:		
Contested before a Judge	0	0.0%
Contested before a Non-Judicial Officer	0	0.0%
Uncontested	29	96.7%
Other	1	3.3%
Cases Processed	30	100.0%
Cases Pending 12/31/08	16	

Accounts New Cases Filed, 1998-2008



LEBANON COUNTY

2008 Population Estimate: 128,934
 Class of County: 5th
 No. of Common Pleas Court Judgeships: 4

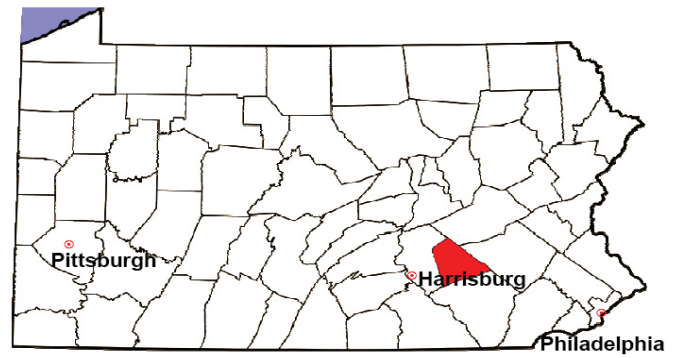


2008 Adoptions		No. of Cases	%
Cases Pending 1/1/08		3	
New Cases Filed in '08		40	
Cases Available for Processing		43	
Processed By:			
Contested before a Judge	Granted	0	0.0%
	Denied	0	0.0%
Uncontested	Granted	41	100.0%
	Denied	0	0.0%
Other		0	0.0%
Cases Processed		41	100.0%
Cases Pending 12/31/08		2	

Note: Prior to 2008, each petition was counted as one new case, regardless of the number of children listed on the petition. Starting in 2008, each child listed on a petition is counted as a separate case. Therefore, statistics for 2008 should not be compared with those for previous years.

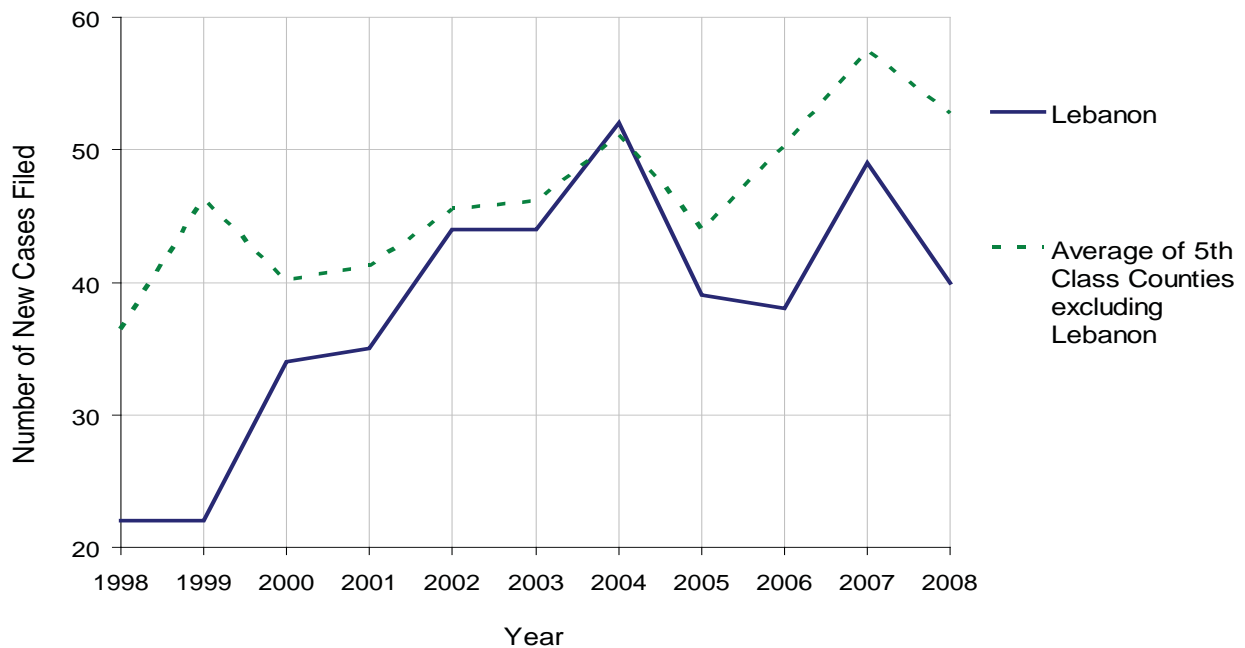
LEBANON COUNTY

2008 Population Estimate: 128,934
 Class of County: 5th
 No. of Common Pleas Court Judgeships: 4



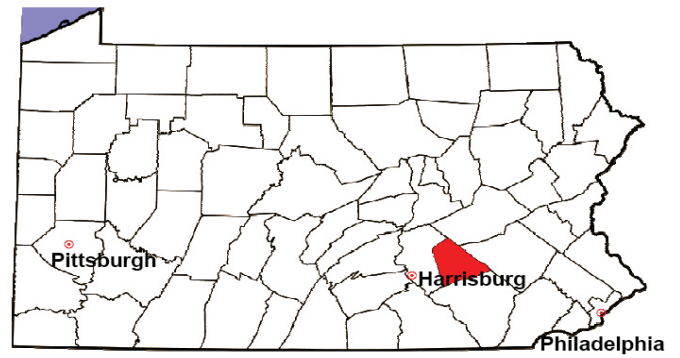
2008 Relinquishments/Terminations	No. of Petitions	%
Cases Pending 1/1/08	6	
New Cases Filed in '08	40	
Cases Available for Processing	46	
Processed By:		
Contested before a Judge	1	2.3%
Uncontested	39	90.7%
Other	3	7.0%
Cases Processed	43	100.0%
Cases Pending 12/31/08	3	

Relinquishments/Terminations New Cases Filed, 1998-2008



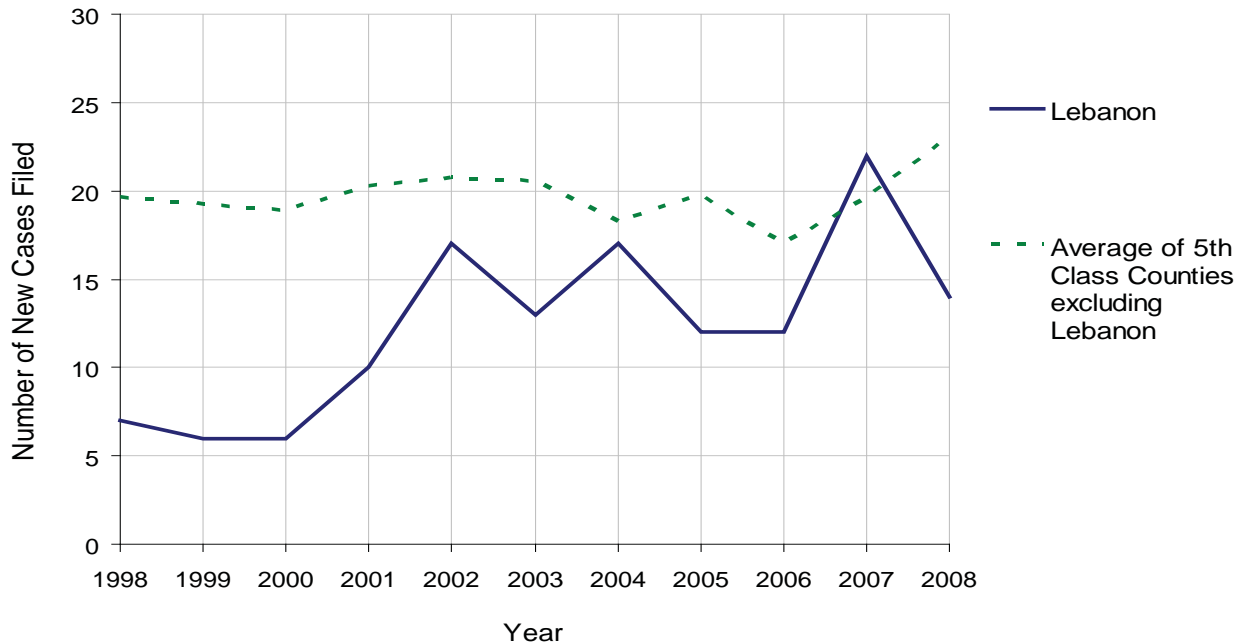
LEBANON COUNTY

2008 Population Estimate: 128,934
 Class of County: 5th
 No. of Common Pleas Court Judgeships: 4



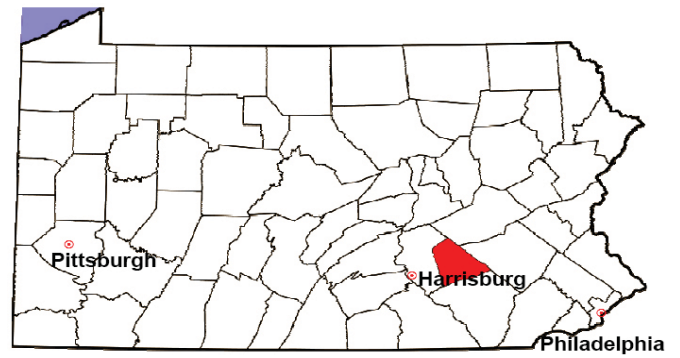
2008 Appointment of Guardians	No. of Petitions	%
Cases Pending 1/1/08	6	
New Cases Filed in '08	14	
Cases Available for Processing	20	
Processed By:		
Contested before a Judge	1	5.9%
Uncontested	15	88.2%
Other	1	5.9%
Cases Processed	17	100.0%
Cases Pending 12/31/08	3	

Appointment of Guardians New Cases Filed, 1998-2008



LEBANON COUNTY

2008 Population Estimate: 128,934
 Class of County: 5th
 No. of Common Pleas Court Judgeships: 4



2008 Jury Activity & Performance Measures		
A. Juror Days		2,108
B. Number Sent to Voir Dire		3,154
	Voir Dire Attendance Rate $(B/A * 100)$	149.6%
C. Number of Voir Dires Started		99
	Juror Days Per Voir Dire Starts (A/C)	21
D. Number of Jurors Selected		1,420
	Juror Selection Rate $(D/B * 100)$	45.0%
E. Number of Jury Trials Started		96
	Juror Days Per Trial Starts (A/E)	22
	Number of Voir Dires Not Resulting in Trial $(C-E)$	3
	Percent Voir Dires Not Resulting in Trial $(C-E)/C * 100$	3.0%
F. Pool Days		21
G. Zero Panel Days		0
	Percent Zero Panel Days $(G/F * 100)$	0.0%
H. Total Juror Fees Incurred		\$55,348
	Average Juror Fees Per Trial (H/E)	\$577

Average Juror Fees Per Trial, 1998-2008

