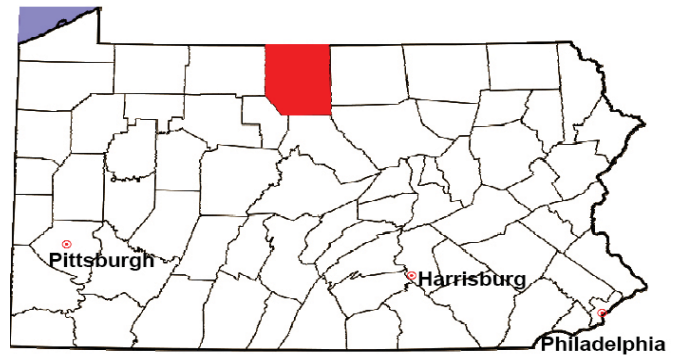


POTTER COUNTY

2008 Population Estimate: 16,720

Class of County: 8th

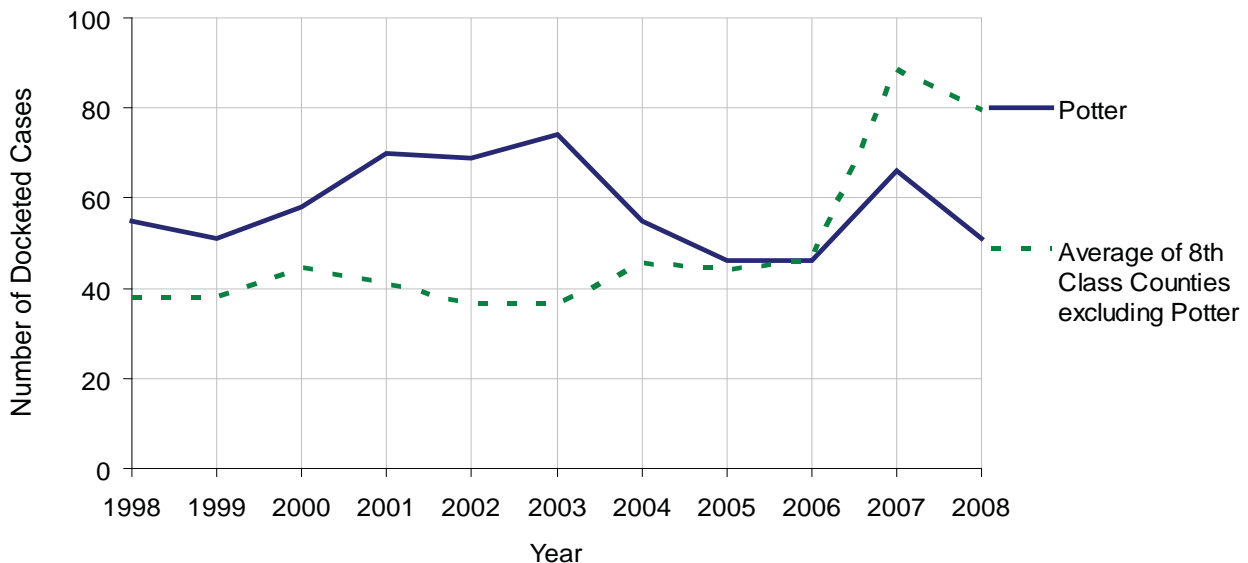
No. of Common Pleas Court Judgeships: 1



2008 Civil		Civil Action		
Docketed Cases		51		
Arbitrated Cases		5		
Trial-Ready Cases:		Civil Action	Other	Total
Cases Pending 1/1/08		9	20	29
Became Trial Ready in '08		5	45	50
Restored to Trial List		0	0	0
Appeals from Arbitration		0	0	0
Cases Available for Trial		14	65	79
Disposed By:				
Settlement		6	1	7
Non-Jury Trial		1	0	1
Jury Trial		0	0	0
Stricken from Trial List		0	0	0
Other		0	6	6
Cases Disposed		7	7	14
Cases Pending 12/31/08		7	58	65

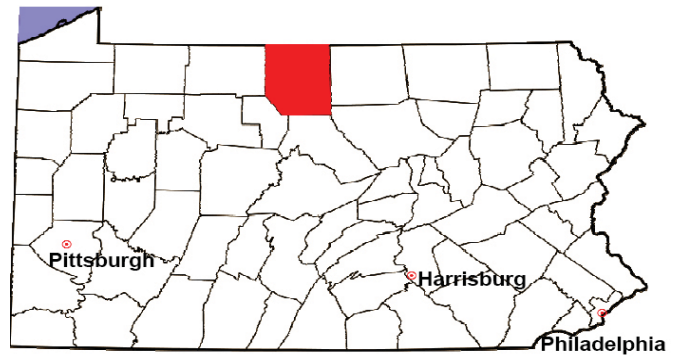
Age of Trial-Ready Cases as of 12/31/08 (Civil Action Only)		
0-6 months	3	43%
7-12 months	0	0%
13-18 months	2	29%
19-24 months	1	14%
25-30 months	1	14%
31-36 months	0	0%
Over 36 months	0	0%
Total	7	100%

Docketed Cases, 1998-2008



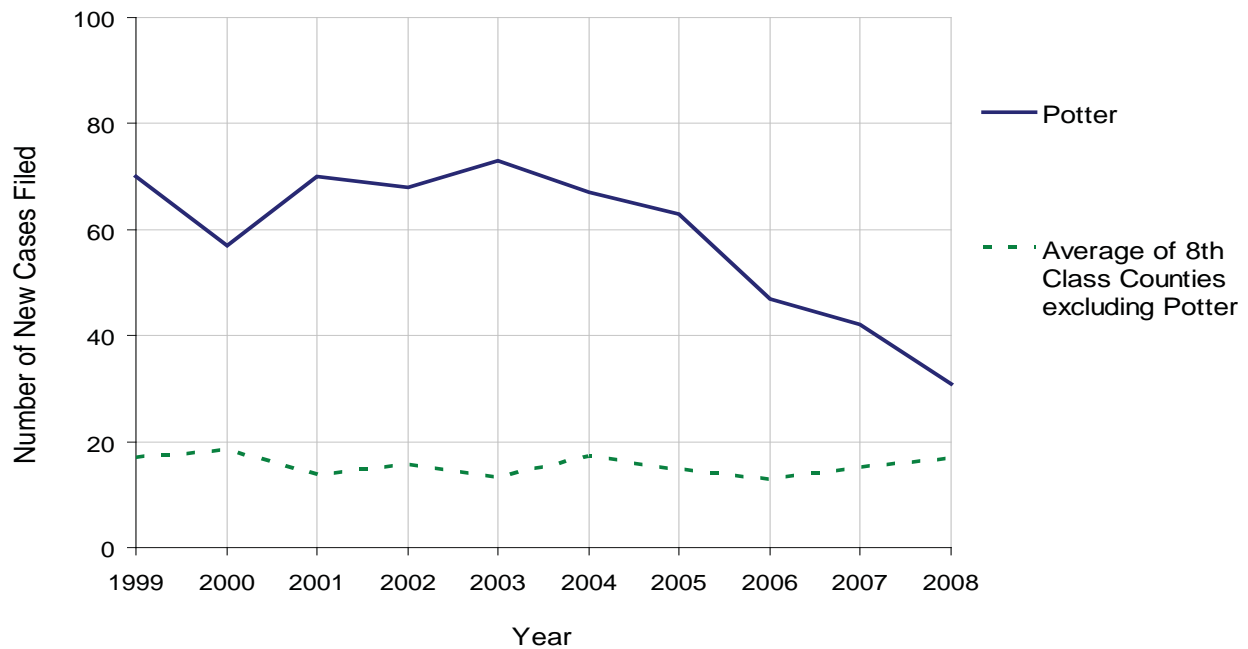
POTTER COUNTY

2008 Population Estimate: 16,720
 Class of County: 8th
 No. of Common Pleas Court Judgeships: 1



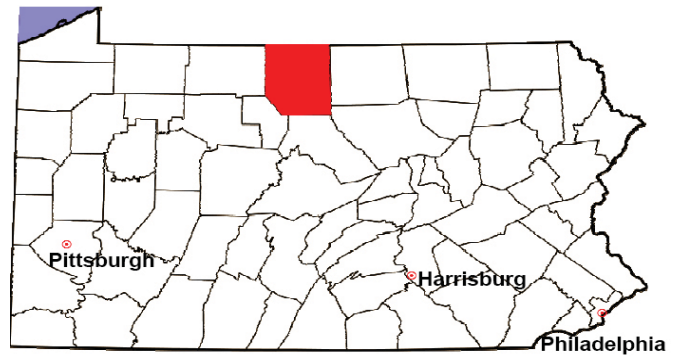
2008 Protection From Abuse	No. of Petitions	%
Cases Pending 1/1/08	6	
New Cases Filed in '08	31	
Cases Available for Processing	37	
Processed By:		
Final Order After Hearing	6	20.7%
Final Order by Stipulation or Agreement	5	17.2%
Dismissal	11	37.9%
Withdrawal	7	24.1%
Other	0	0.0%
Cases Processed	29	100.0%
Cases Pending 12/31/08	8	

PFA New Cases Filed, 1999-2008



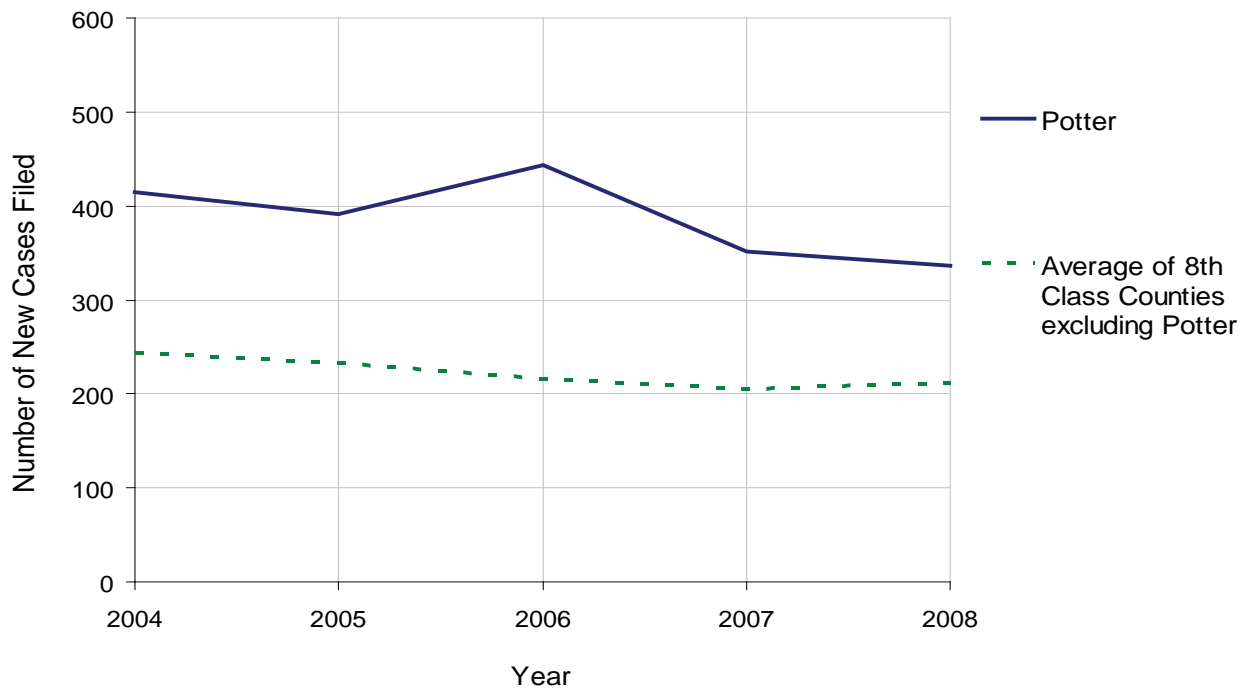
POTTER COUNTY

2008 Population Estimate: 16,720
 Class of County: 8th
 No. of Common Pleas Court Judgeships: 1



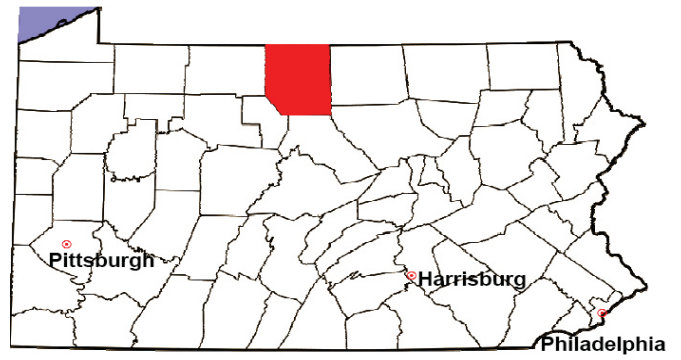
2008 Spousal & Child Support	No. of Petitions	%
Cases Pending 1/1/08	67	
New Cases Filed in '08	337	
Dockets Transferred In (+)	2	
Dockets Transferred Out (-)	8	
Cases Available for Processing	398	
Processed By:		
Judge	20	5.9%
Intake Officer	320	93.8%
Hearing Officer	0	0.0%
Other	1	0.3%
Cases Processed	341	100.0%
Cases Pending 12/31/08	57	

Spousal & Child Support New Cases Filed, 1998-2008



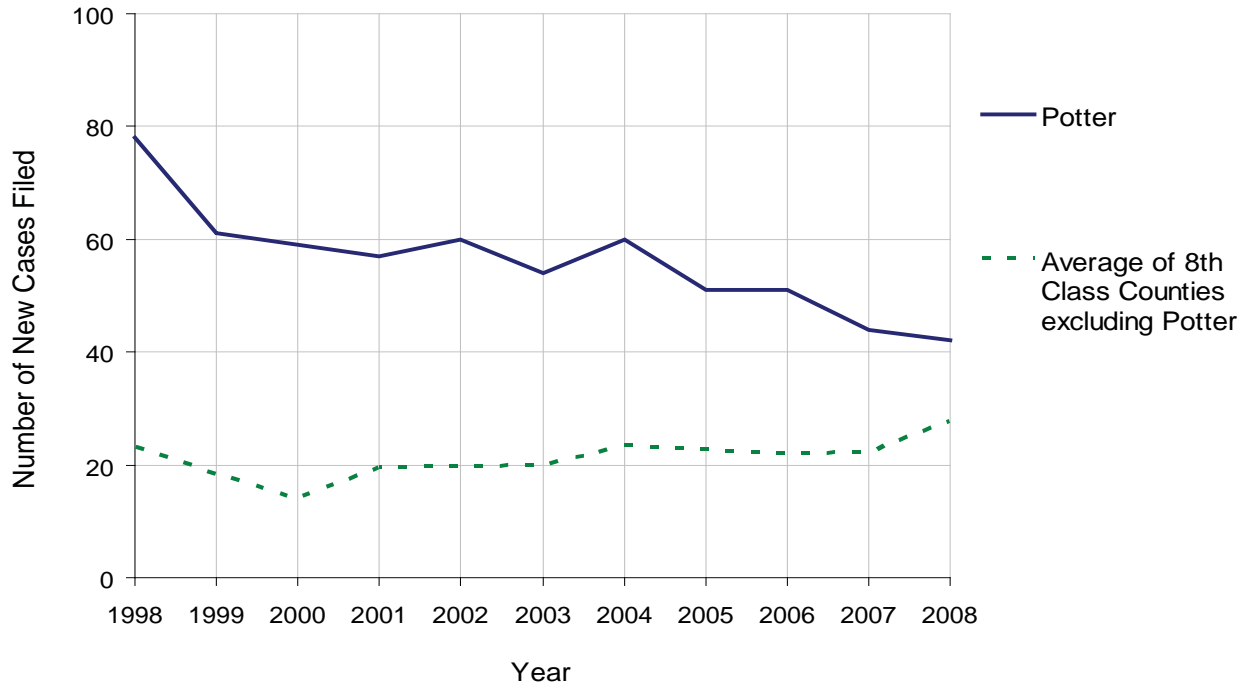
POTTER COUNTY

2008 Population Estimate: 16,720
 Class of County: 8th
 No. of Common Pleas Court Judgeships: 1



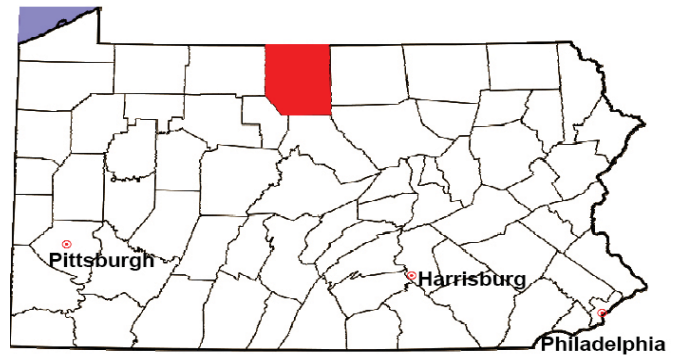
2008 Custody/Partial Custody/Visitation	No. of Petitions	%
Cases Pending 1/1/08	54	
New Cases Filed in '08	42	
Cases Available for Processing	96	
Processed By:		
Judge	0	0.0%
Non-Judicial Officer	35	97.2%
Other	1	2.8%
Cases Processed	36	100.0%
Cases Pending 12/31/08	60	

Custody/Partial Custody/Visitation New Cases Filed
 1998-2008



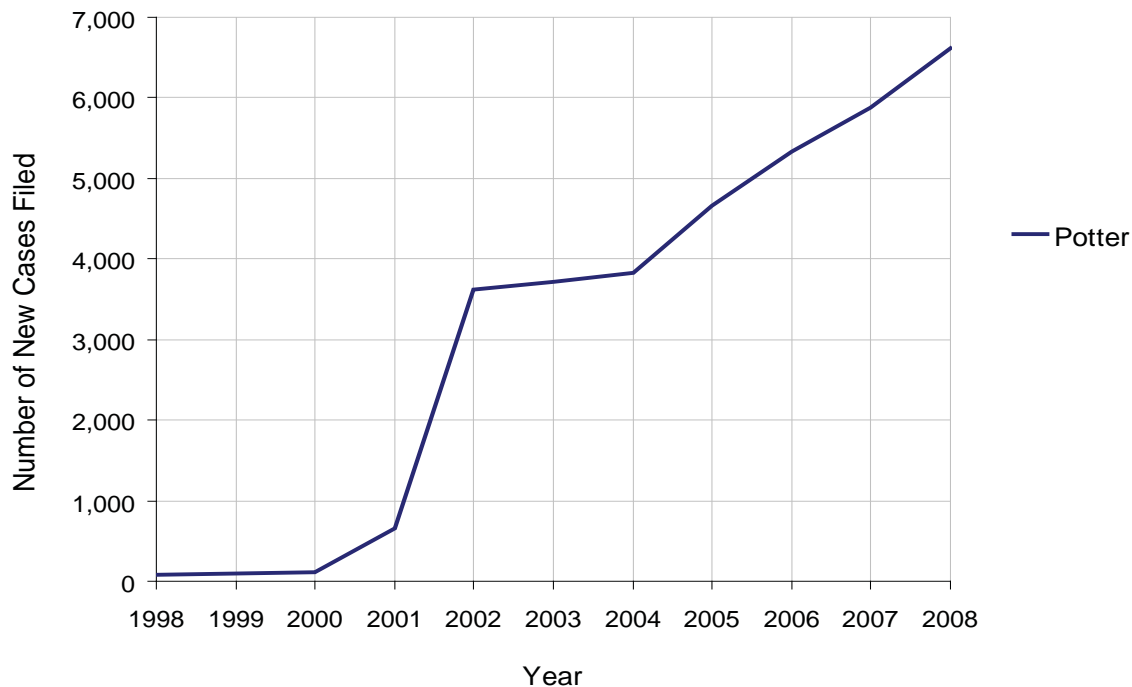
POTTER COUNTY

2008 Population Estimate: 16,720
 Class of County: 8th
 No. of Common Pleas Court Judgeships: 1



2008 Divorce	No. of Petitions	%
Cases Pending 1/1/08	3,958	
New Cases Filed in '08	6,609	
Cases Available for Processing	10,567	
Processed By:		
Contested Before a Judge	0	0.0%
Contested Before a Master	0	0.0%
Uncontested	5,426	93.2%
Other	393	6.8%
Cases Processed	5,819	100.0%
Cases Pending 12/31/08	4,748	

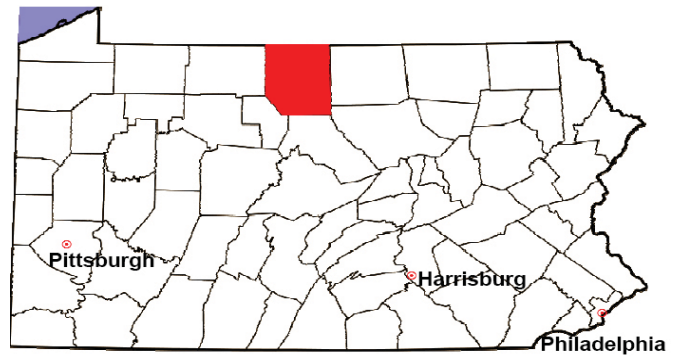
Divorce New Cases Filed, 1998-2008



* Due to a high number of out-of-district petitions, Potter County has a larger inventory than other 8th class counties. Therefore, it is not meaningful to compare Potter County with other 8th class counties in this chart.

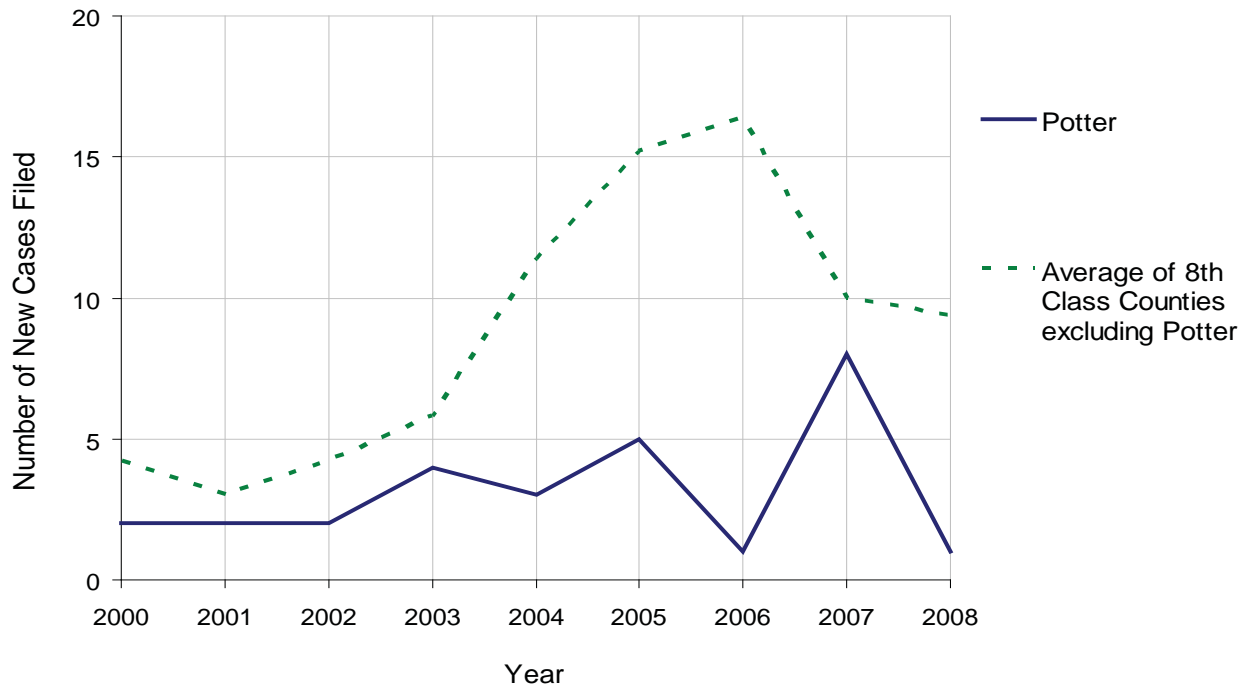
POTTER COUNTY

2008 Population Estimate: 16,720
 Class of County: 8th
 No. of Common Pleas Court Judgeships: 1



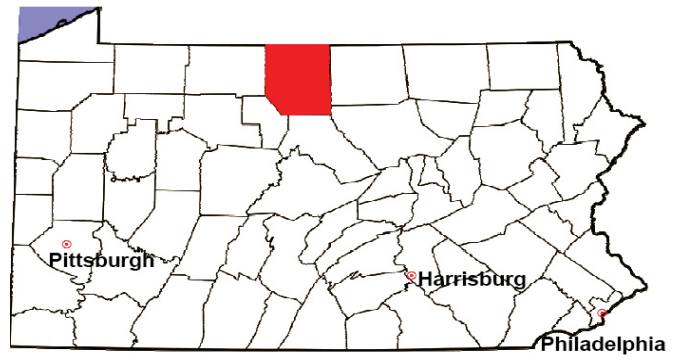
2008 Juvenile Dependency Abuse/Neglect	No. of Petitions	%
Cases Pending 1/1/08	4	
New Cases Filed in '08	1	
Cases Available for Processing	5	
Processed By:		
Judge	0	0.0%
Non-Judicial Officer	0	0.0%
Other	2	100.0%
Cases Processed	2	100.0%
Cases Pending 12/31/08	3	

Abuse/Neglect New Cases Filed, 2000-2008



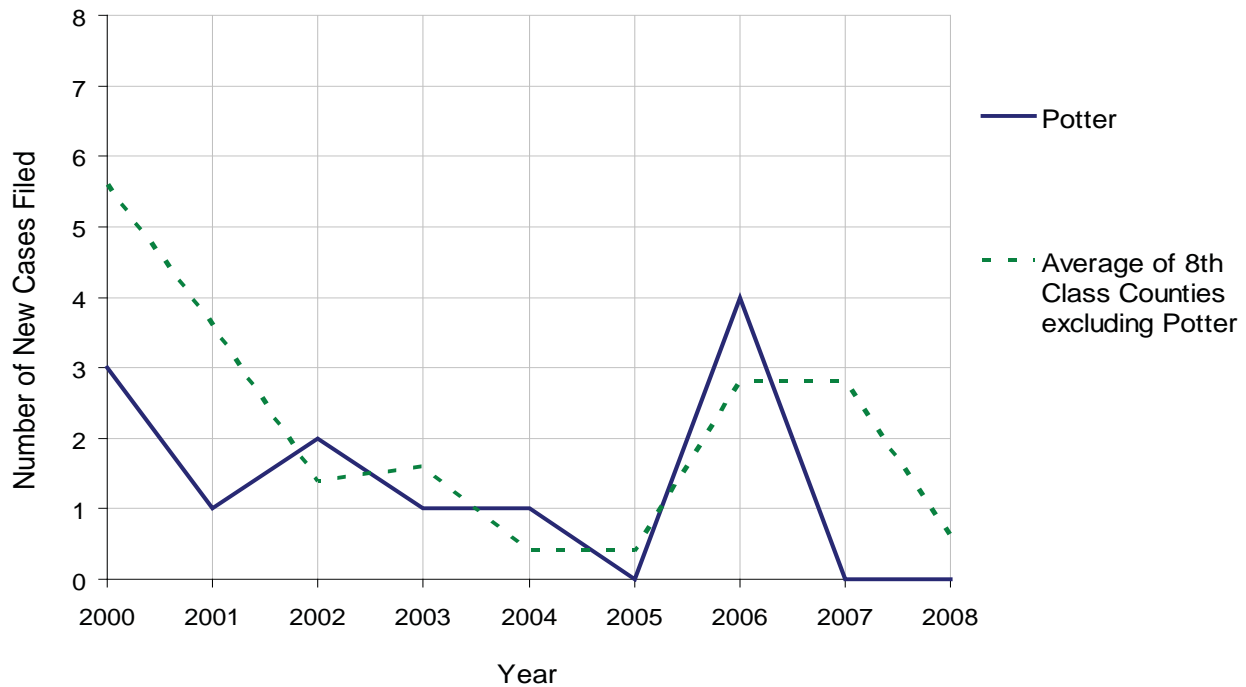
POTTER COUNTY

2008 Population Estimate: 16,720
 Class of County: 8th
 No. of Common Pleas Court Judgeships: 1



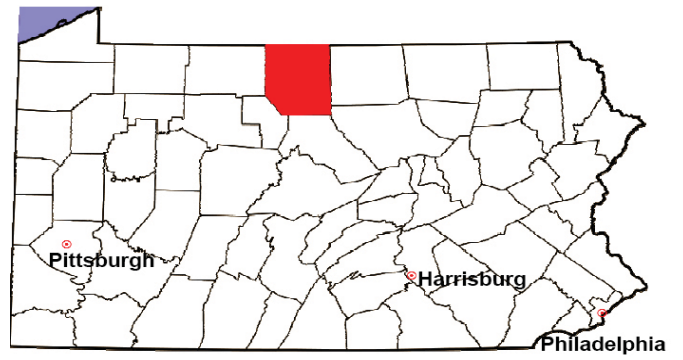
2008 Juvenile Dependency Status Offenses	No. of Petitions	%
Cases Pending 1/1/08	0	
New Cases Filed in '08	0	
Cases Available for Processing	0	
Processed By:		
Judge	0	
Non-Judicial Officer	0	
Other	0	
Cases Processed	0	
Cases Pending 12/31/08	0	

Status Offenses New Cases Filed, 2000-2008



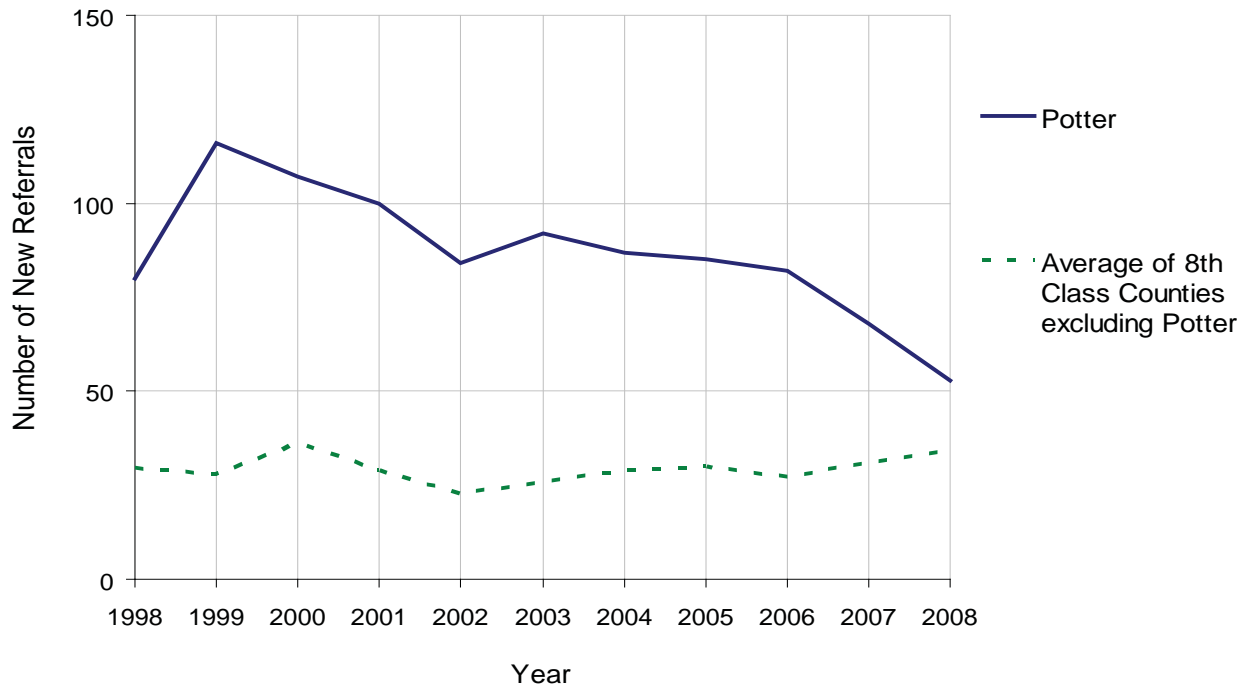
POTTER COUNTY

2008 Population Estimate: 16,720
 Class of County: 8th
 No. of Common Pleas Court Judgeships: 1



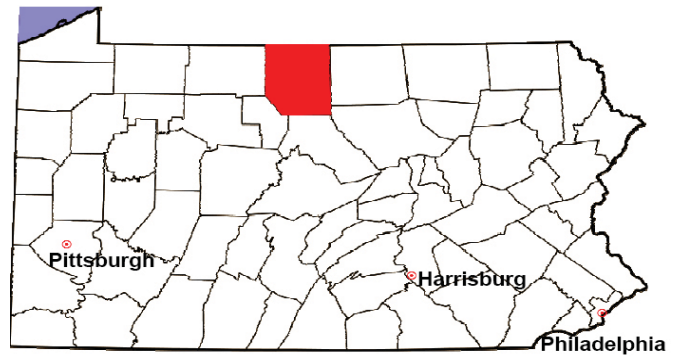
2008 Juvenile Delinquency	No. of Referrals	%
Cases Pending 1/1/08	9	
New Referrals in '08	53	
Cases Available for Processing	62	
Processed By:		
Judge	25	45.5%
Non-Judicial Officer	10	18.2%
Other	20	36.4%
Cases Processed	55	100.0%
Cases Pending 12/31/08	7	

Juvenile Delinquency New Referrals, 1998-2008



POTTER COUNTY

2008 Population Estimate: 16,720
 Class of County: 8th
 No. of Common Pleas Court Judgeships: 1



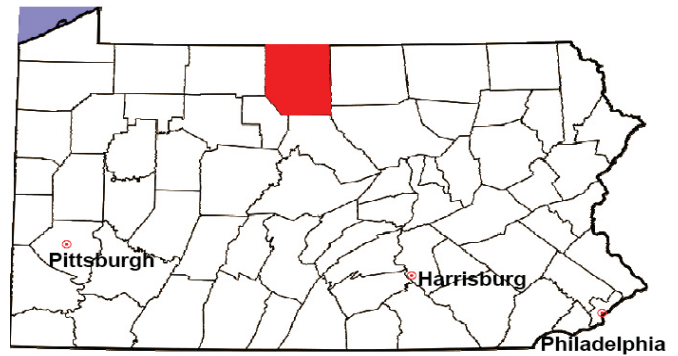
2008 Accounts	No. of Accounts	%
Cases Pending 1/1/08	2	
New Cases Filed in '08	14	
Cases Available for Processing	16	
Processed By:		
Contested before a Judge	3	18.8%
Contested before a Non-Judicial Officer	0	0.0%
Uncontested	5	31.3%
Other	8	50.0%
Cases Processed	16	100.0%
Cases Pending 12/31/08	0	

Accounts New Cases Filed, 1998-2008



POTTER COUNTY

2008 Population Estimate: 16,720
 Class of County: 8th
 No. of Common Pleas Court Judgeships: 1

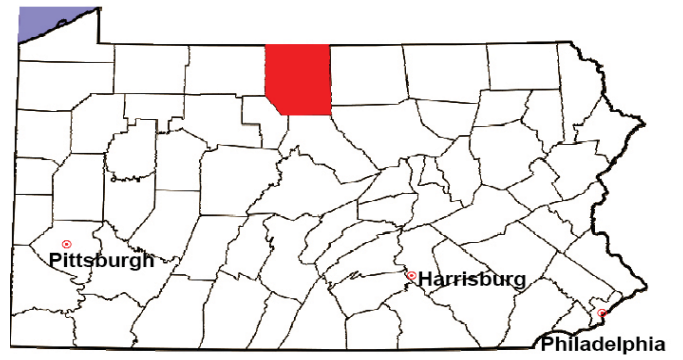


2008 Adoptions		No. of Cases	%
Cases Pending 1/1/08		2	
New Cases Filed in '08		4	
Cases Available for Processing		6	
Processed By:			
Contested before a Judge	Granted	1	25.0%
	Denied	0	0.0%
Uncontested	Granted	2	50.0%
	Denied	0	0.0%
Other		1	25.0%
Cases Processed		4	100.0%
Cases Pending 12/31/08		2	

Note: Prior to 2008, each petition was counted as one new case, regardless of the number of children listed on the petition. Starting in 2008, each child listed on a petition is counted as a separate case. Therefore, statistics for 2008 should not be compared with those for previous years.

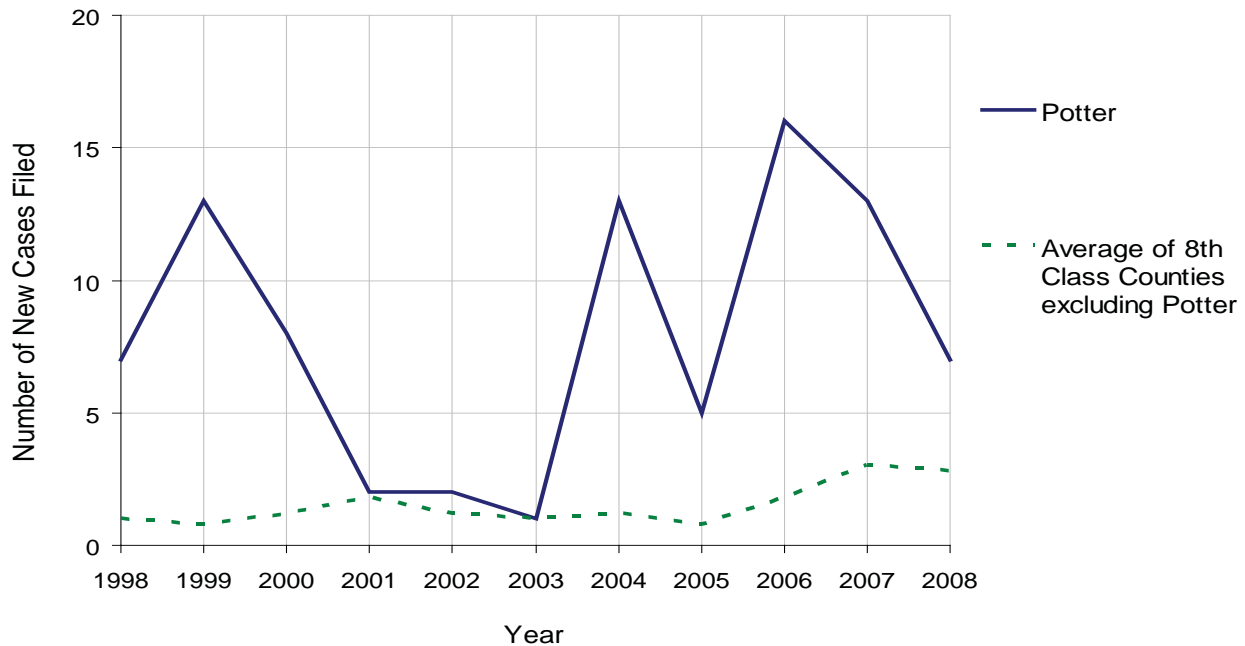
POTTER COUNTY

2008 Population Estimate: 16,720
 Class of County: 8th
 No. of Common Pleas Court Judgeships: 1



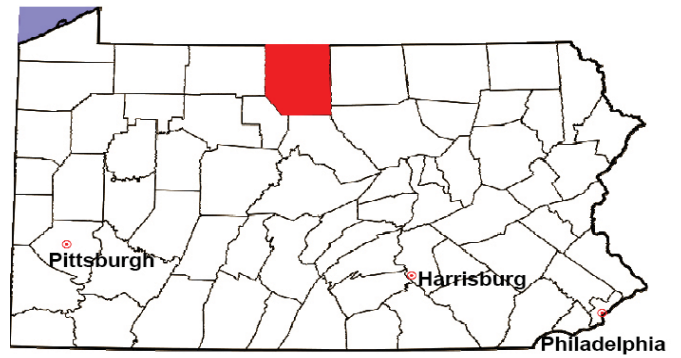
2008 Relinquishments/Terminations	No. of Petitions	%
Cases Pending 1/1/08	4	
New Cases Filed in '08	7	
Cases Available for Processing	11	
Processed By:		
Contested before a Judge	4	36.4%
Uncontested	5	45.5%
Other	2	18.2%
Cases Processed	11	100.0%
Cases Pending 12/31/08	0	

Relinquishments/Terminations New Cases Filed, 1998-2008



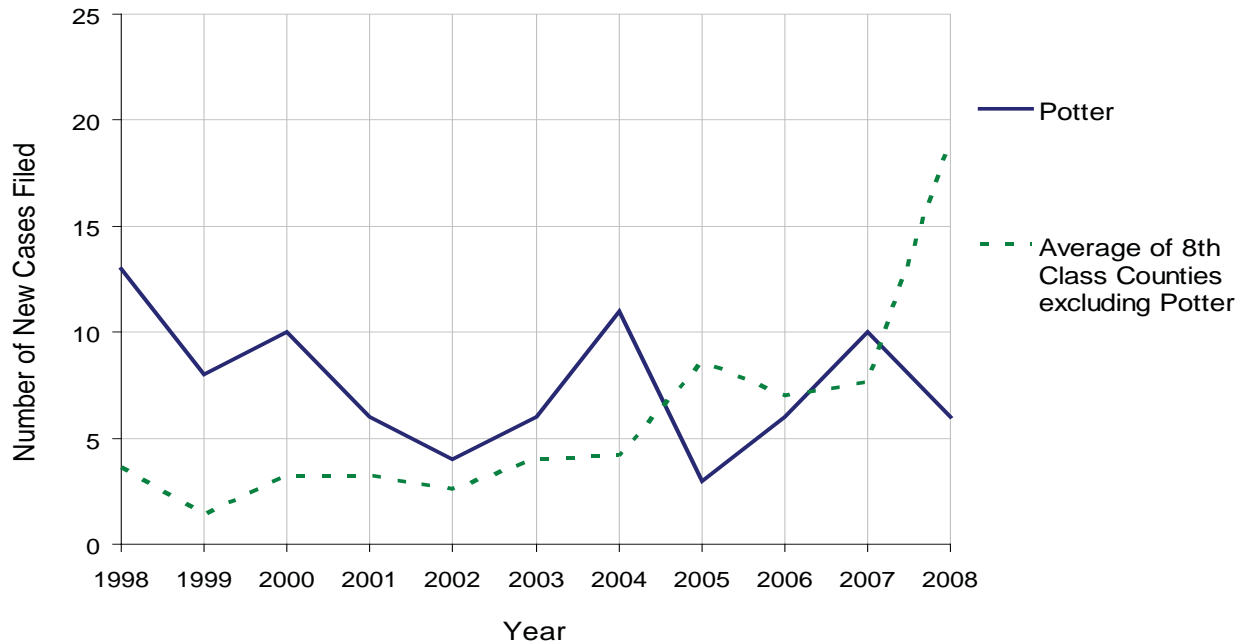
POTTER COUNTY

2008 Population Estimate: 16,720
 Class of County: 8th
 No. of Common Pleas Court Judgeships: 1



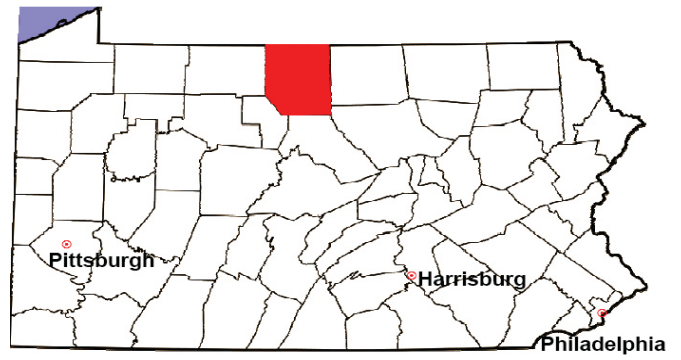
2008 Appointment of Guardians	No. of Petitions	%
Cases Pending 1/1/08	3	
New Cases Filed in '08	6	
Cases Available for Processing	9	
Processed By:		
Contested before a Judge	1	16.7%
Uncontested	5	83.3%
Other	0	0.0%
Cases Processed	6	100.0%
Cases Pending 12/31/08	3	

Appointment of Guardians New Cases Filed, 1998-2008



POTTER COUNTY

2008 Population Estimate: 16,720
 Class of County: 8th
 No. of Common Pleas Court Judgeships: 1



2008 Jury Activity & Performance Measures		
A. Juror Days		363
B. Number Sent to Voir Dire		573
	Voir Dire Attendance Rate $(B/A * 100)$	157.9%
C. Number of Voir Dires Started		17
	Juror Days Per Voir Dire Starts (A/C)	21
D. Number of Jurors Selected		238
	Juror Selection Rate $(D/B * 100)$	41.5%
E. Number of Jury Trials Started		11
	Juror Days Per Trial Starts (A/E)	33
	Number of Voir Dires Not Resulting in Trial $(C-E)$	6
	Percent Voir Dires Not Resulting in Trial $(C-E)/C * 100$	35.3%
F. Pool Days		6
G. Zero Panel Days		1
	Percent Zero Panel Days $(G/F * 100)$	16.7%
H. Total Juror Fees Incurred		\$9,899
	Average Juror Fees Per Trial (H/E)	\$900

Average Juror Fees Per Trial, 1998-2008

