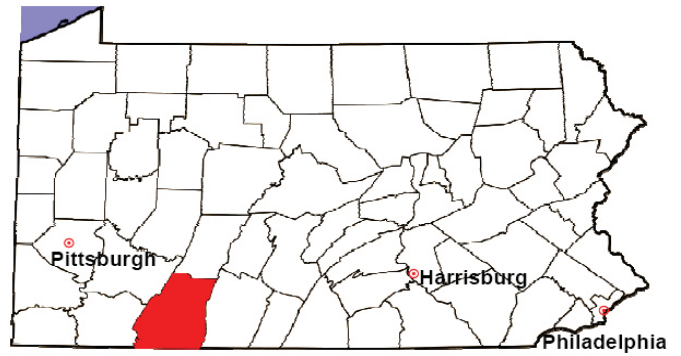


SOMERSET COUNTY

2008 Population Estimate: 77,454

Class of County: 6th

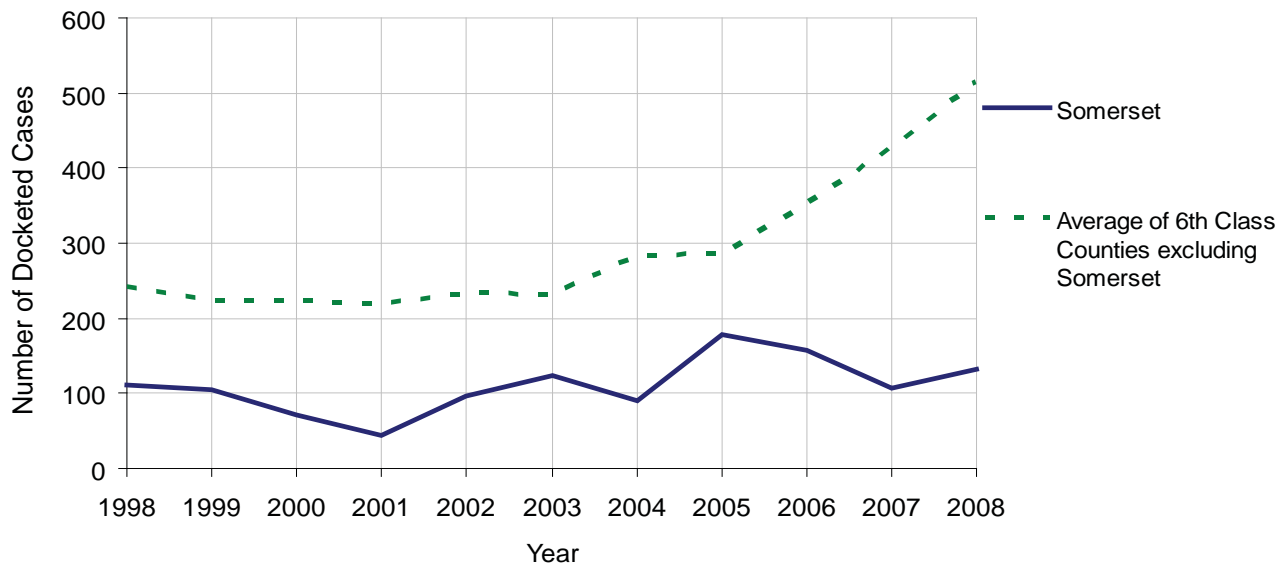
No. of Common Pleas Court Judgeships: 3



2008 Civil		Civil Action		
Docketed Cases		133		
Arbitrated Cases		18		
Trial-Ready Cases:		Civil Action	Other	Total
Cases Pending 1/1/08		41	0	41
Became Trial Ready in '08		39	0	39
Restored to Trial List		2	0	2
Appeals from Arbitration		0	0	0
Cases Available for Trial		82	0	82
Disposed By:				
Settlement		26	0	26
Non-Jury Trial		5	0	5
Jury Trial		1	0	1
Stricken from Trial List		2	0	2
Other		7	0	7
Cases Disposed		41	0	41
Cases Pending 12/31/08		41	0	41

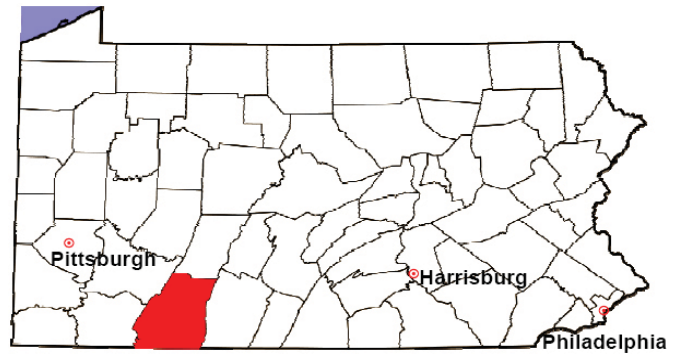
Age of Trial-Ready Cases as of 12/31/08 (Civil Action Only)		
0-6 months	19	46%
7-12 months	6	15%
13-18 months	2	5%
19-24 months	9	22%
25-30 months	2	5%
31-36 months	1	2%
Over 36 months	2	5%
Total	41	100%

Docketed Cases, 1998-2008



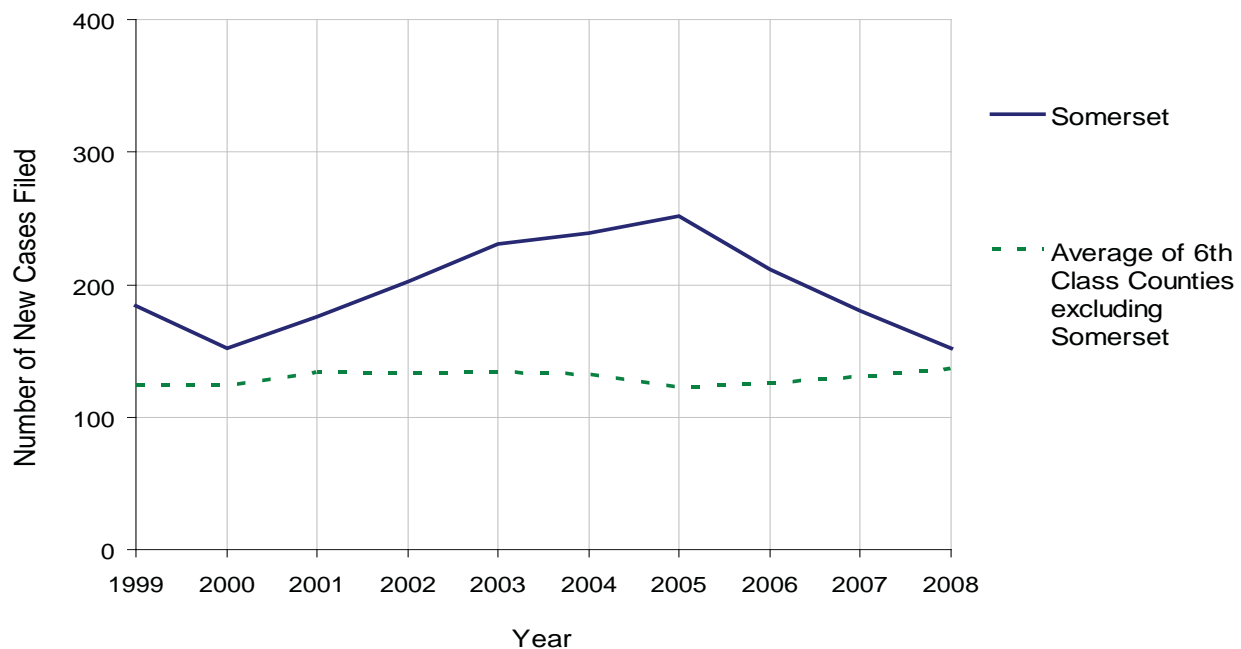
SOMERSET COUNTY

2008 Population Estimate: 77,454
 Class of County: 6th
 No. of Common Pleas Court Judgeships: 3



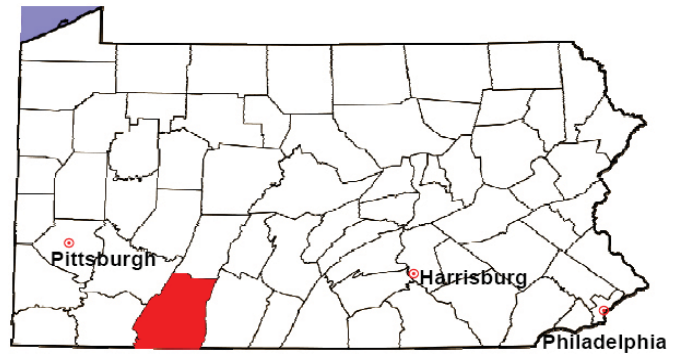
2008 Protection From Abuse	No. of Petitions	%
Cases Pending 1/1/08	12	
New Cases Filed in '08	152	
Cases Available for Processing	164	
Processed By:		
Final Order After Hearing	18	13.0%
Final Order by Stipulation or Agreement	37	26.8%
Dismissal	25	18.1%
Withdrawal	54	39.1%
Other	4	2.9%
Cases Processed	138	100.0%
Cases Pending 12/31/08	26	

PFA New Cases Filed, 1999-2008



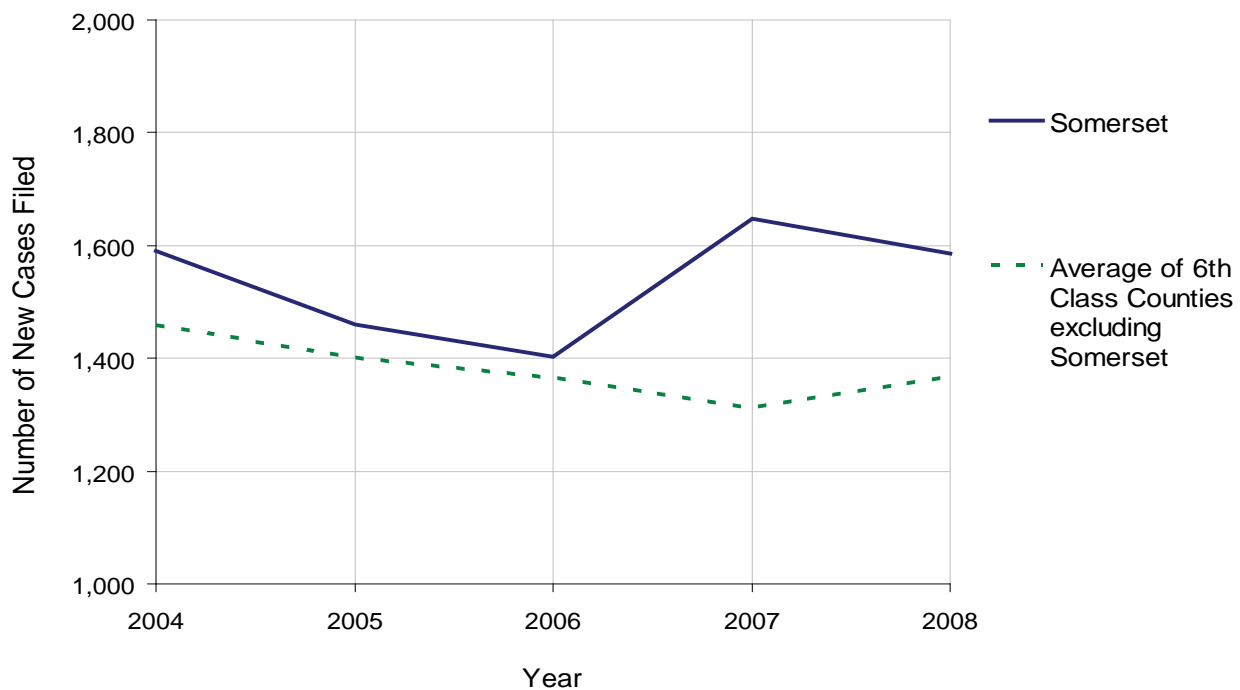
SOMERSET COUNTY

2008 Population Estimate: 77,454
 Class of County: 6th
 No. of Common Pleas Court Judgeships: 3



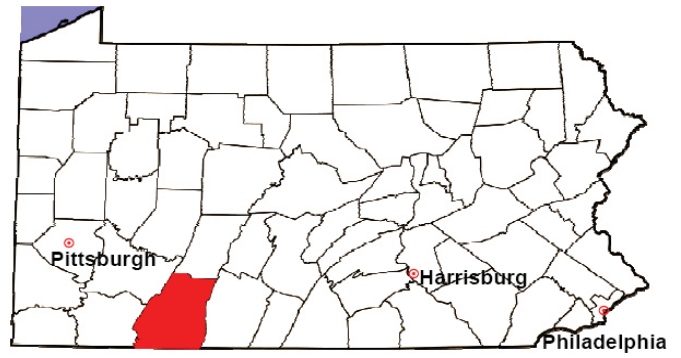
2008 Spousal & Child Support	No. of Petitions	%
Cases Pending 1/1/08	463	
New Cases Filed in '08	1,585	
Dockets Transferred In (+)	18	
Dockets Transferred Out (-)	11	
Cases Available for Processing	2,055	
Processed By:		
Judge	29	1.7%
Intake Officer	1,528	90.7%
Hearing Officer	128	7.6%
Other	0	0.0%
Cases Processed	1,685	100.0%
Cases Pending 12/31/08	370	

Spousal & Child Support New Cases Filed, 1998-2008



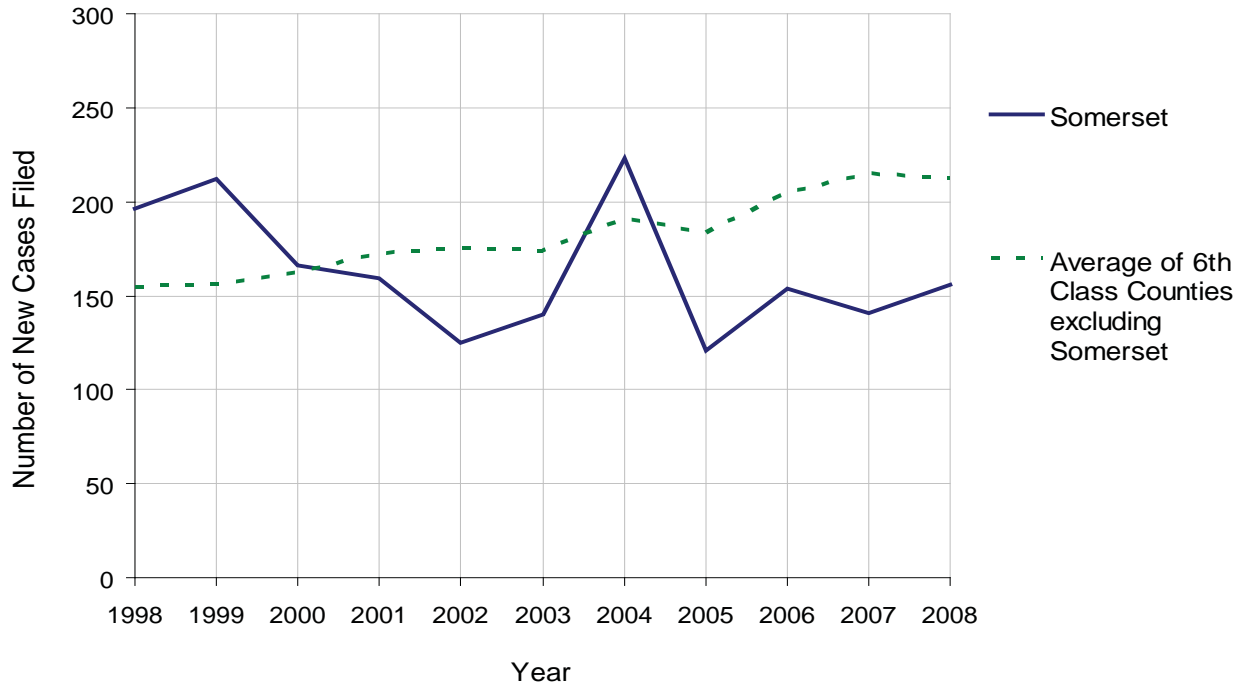
SOMERSET COUNTY

2008 Population Estimate: 77,454
 Class of County: 6th
 No. of Common Pleas Court Judgeships: 3



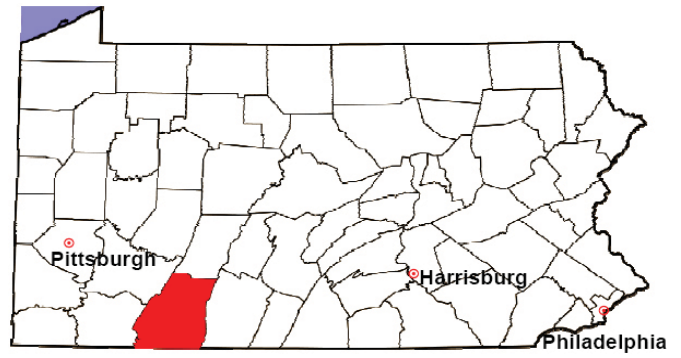
2008 Custody/Partial Custody/Visitation	No. of Petitions	%
Cases Pending 1/1/08	65	
New Cases Filed in '08	156	
Cases Available for Processing	221	
Processed By:		
Judge	11	7.8%
Non-Judicial Officer	63	44.7%
Other	67	47.5%
Cases Processed	141	100.0%
Cases Pending 12/31/08	80	

Custody/Partial Custody/Visitation New Cases Filed
 1998-2008



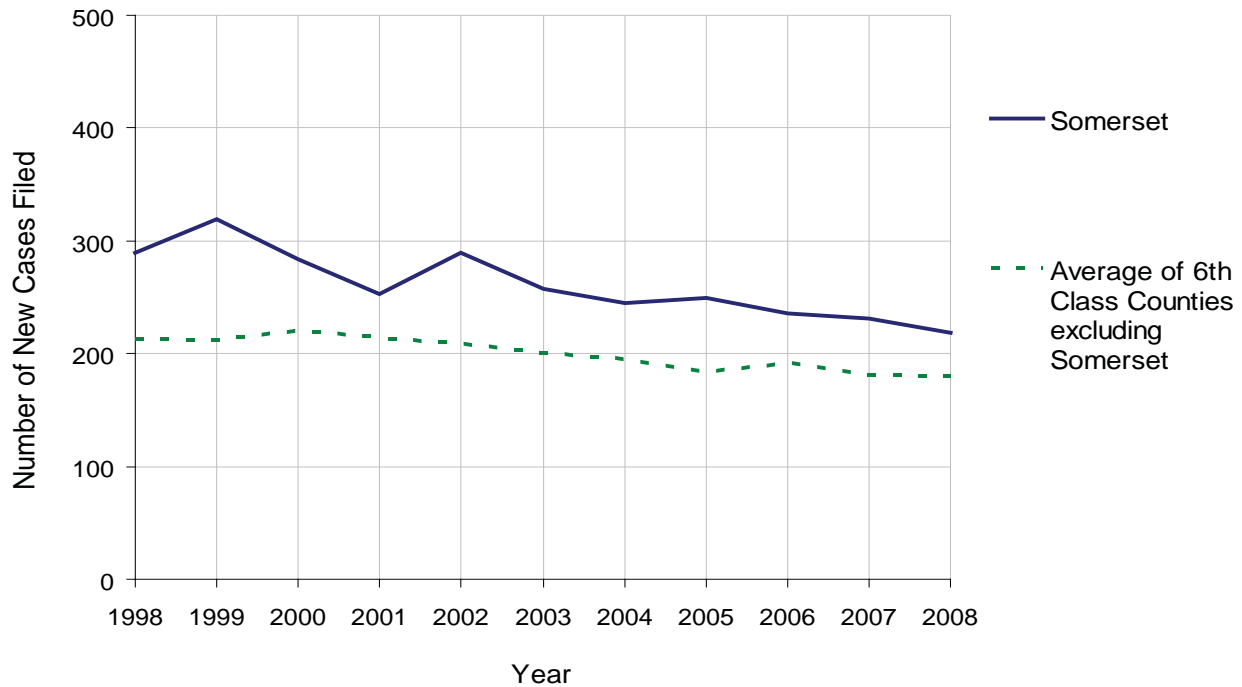
SOMERSET COUNTY

2008 Population Estimate: 77,454
 Class of County: 6th
 No. of Common Pleas Court Judgeships: 3



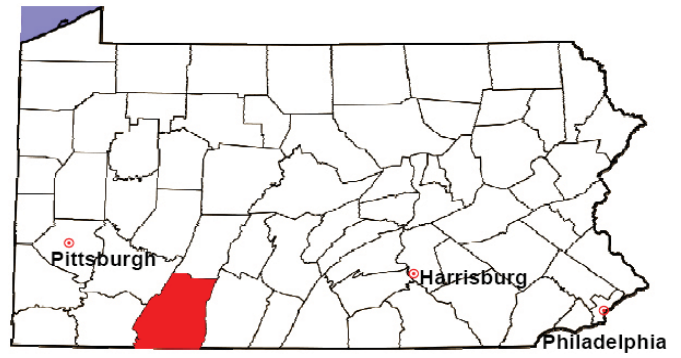
2008 Divorce	No. of Petitions	%
Cases Pending 1/1/08	589	
New Cases Filed in '08	219	
Cases Available for Processing	808	
Processed By:		
Contested Before a Judge	0	0.0%
Contested Before a Master	0	0.0%
Uncontested	191	94.6%
Other	11	5.4%
Cases Processed	202	100.0%
Cases Pending 12/31/08	606	

Divorce New Cases Filed, 1998-2008



SOMERSET COUNTY

2008 Population Estimate: 77,454
 Class of County: 6th
 No. of Common Pleas Court Judgeships: 3



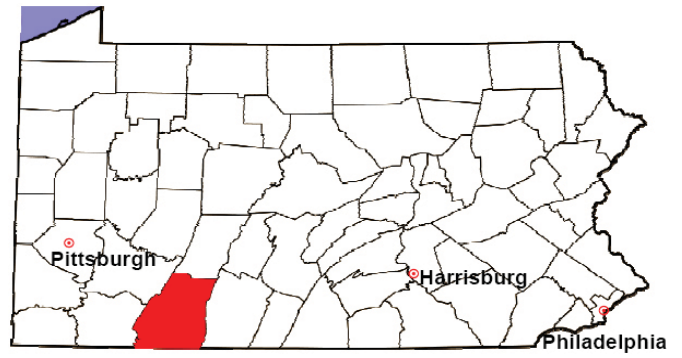
2008 Juvenile Dependency Abuse/Neglect	No. of Petitions	%
Cases Pending 1/1/08	0	
New Cases Filed in '08	25	
Cases Available for Processing	25	
Processed By:		
Judge	18	78.3%
Non-Judicial Officer	0	0.0%
Other	5	21.7%
Cases Processed	23	100.0%
Cases Pending 12/31/08	2	

Abuse/Neglect New Cases Filed, 2000-2008



SOMERSET COUNTY

2008 Population Estimate: 77,454
 Class of County: 6th
 No. of Common Pleas Court Judgeships: 3



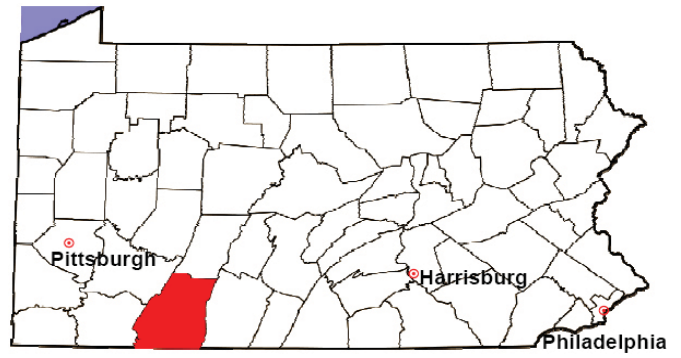
2008 Juvenile Dependency Status Offenses	No. of Petitions	%
Cases Pending 1/1/08	1	
New Cases Filed in '08	8	
Cases Available for Processing	9	
Processed By:		
Judge	9	100.0%
Non-Judicial Officer	0	0.0%
Other	0	0.0%
Cases Processed	9	100.0%
Cases Pending 12/31/08	0	

Status Offenses New Cases Filed, 2000-2008



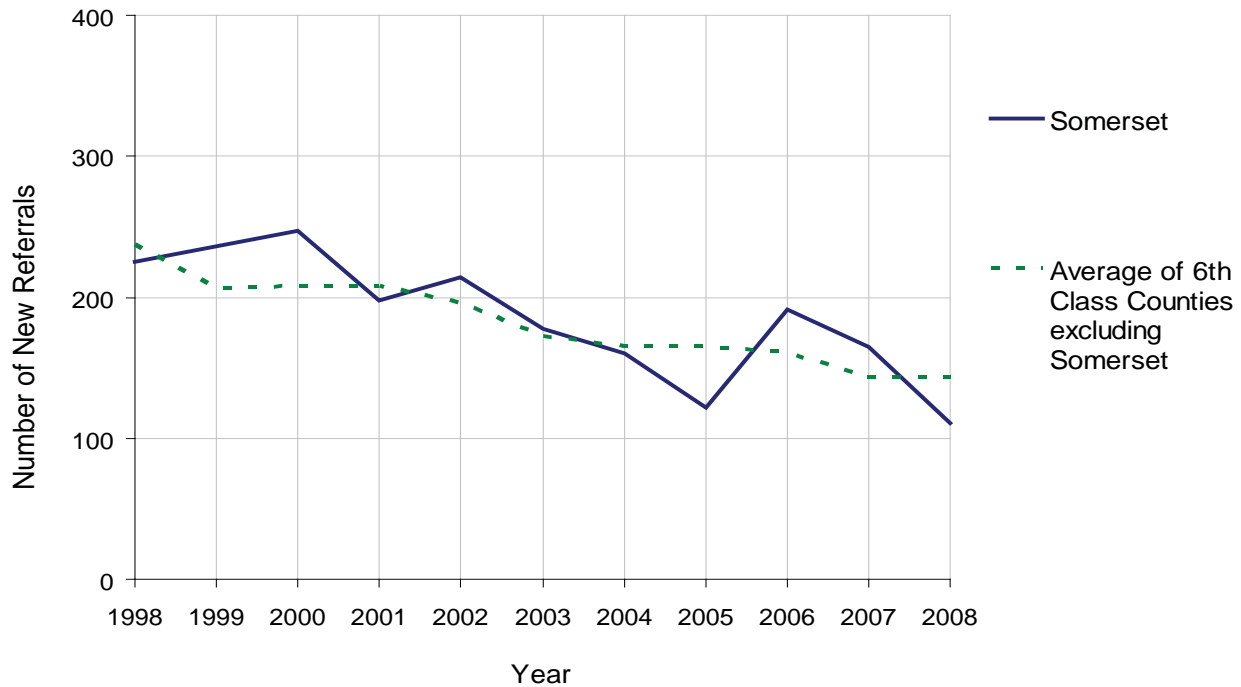
SOMERSET COUNTY

2008 Population Estimate: 77,454
 Class of County: 6th
 No. of Common Pleas Court Judgeships: 3



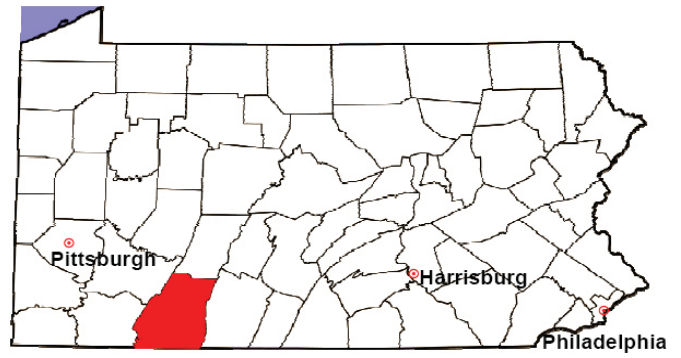
2008 Juvenile Delinquency	No. of Referrals	%
Cases Pending 1/1/08	58	
New Referrals in '08	111	
Cases Available for Processing	169	
Processed By:		
Judge	112	86.8%
Non-Judicial Officer	17	13.2%
Other	0	0.0%
Cases Processed	129	100.0%
Cases Pending 12/31/08	40	

Juvenile Delinquency New Referrals, 1998-2008



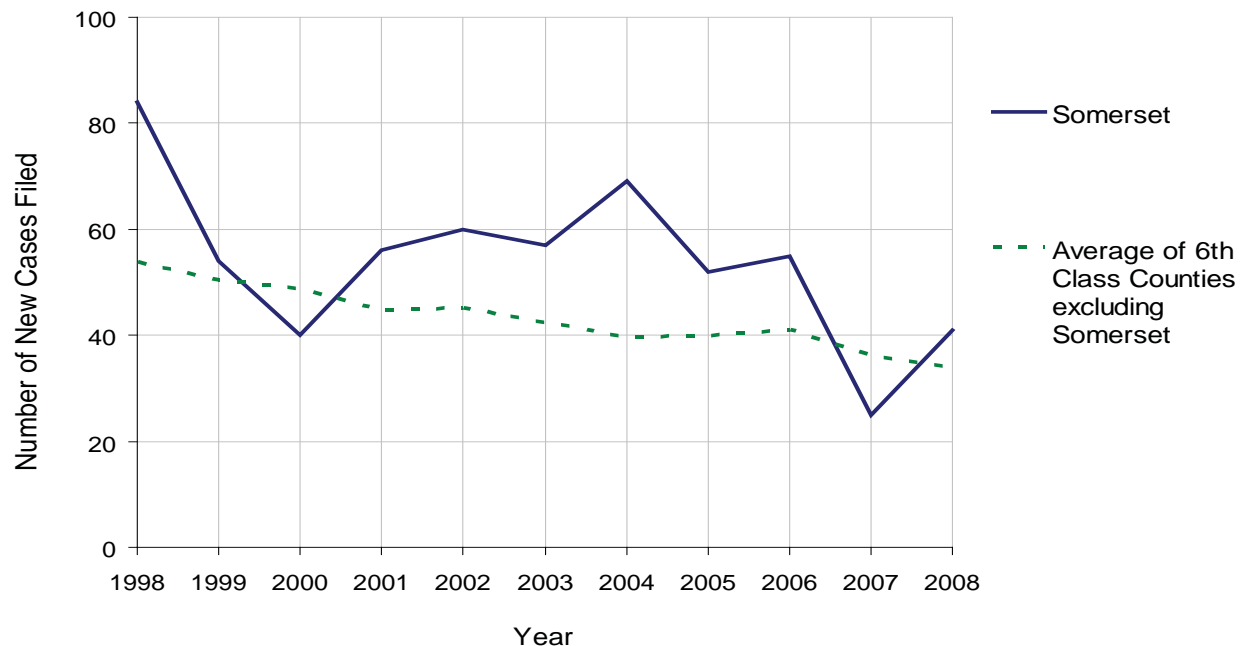
SOMERSET COUNTY

2008 Population Estimate: 77,454
 Class of County: 6th
 No. of Common Pleas Court Judgeships: 3



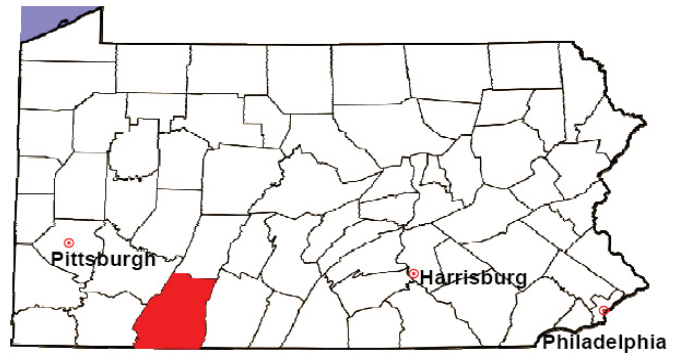
2008 Accounts	No. of Accounts	%
Cases Pending 1/1/08	3	
New Cases Filed in '08	41	
Cases Available for Processing	44	
Processed By:		
Contested before a Judge	0	0.0%
Contested before a Non-Judicial Officer	0	0.0%
Uncontested	39	100.0%
Other	0	0.0%
Cases Processed	39	100.0%
Cases Pending 12/31/08	5	

Accounts New Cases Filed, 1998-2008



SOMERSET COUNTY

2008 Population Estimate: 77,454
 Class of County: 6th
 No. of Common Pleas Court Judgeships: 3

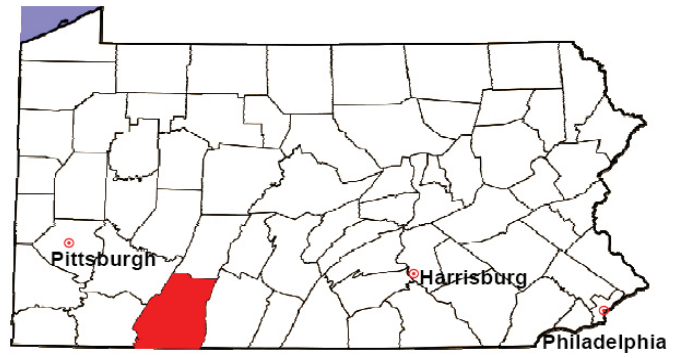


2008 Adoptions		No. of Cases	%
Cases Pending 1/1/08		2	
New Cases Filed in '08		26	
Cases Available for Processing		28	
Processed By:			
Contested before a Judge	Granted	0	0.0%
	Denied	0	0.0%
Uncontested	Granted	23	100.0%
	Denied	0	0.0%
Other		0	0.0%
Cases Processed		23	100.0%
Cases Pending 12/31/08		5	

Note: Prior to 2008, each petition was counted as one new case, regardless of the number of children listed on the petition. Starting in 2008, each child listed on a petition is counted as a separate case. Therefore, statistics for 2008 should not be compared with those for previous years.

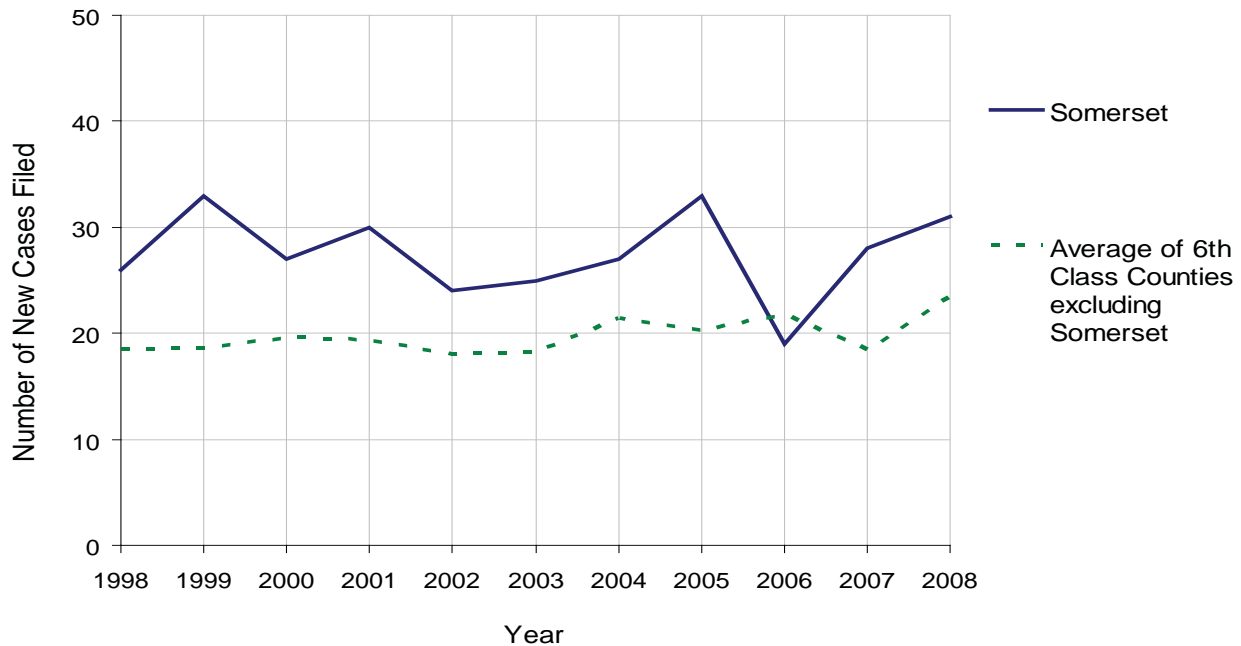
SOMERSET COUNTY

2008 Population Estimate: 77,454
 Class of County: 6th
 No. of Common Pleas Court Judgeships: 3



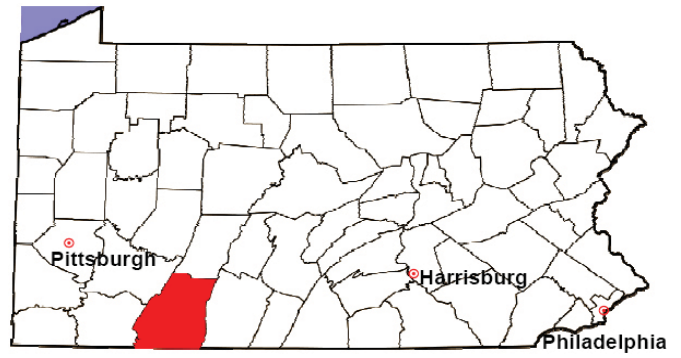
2008 Relinquishments/Terminations	No. of Petitions	%
Cases Pending 1/1/08	20	
New Cases Filed in '08	31	
Cases Available for Processing	51	
Processed By:		
Contested before a Judge	6	18.2%
Uncontested	26	78.8%
Other	1	3.0%
Cases Processed	33	100.0%
Cases Pending 12/31/08	18	

Relinquishments/Terminations New Cases Filed, 1998-2008



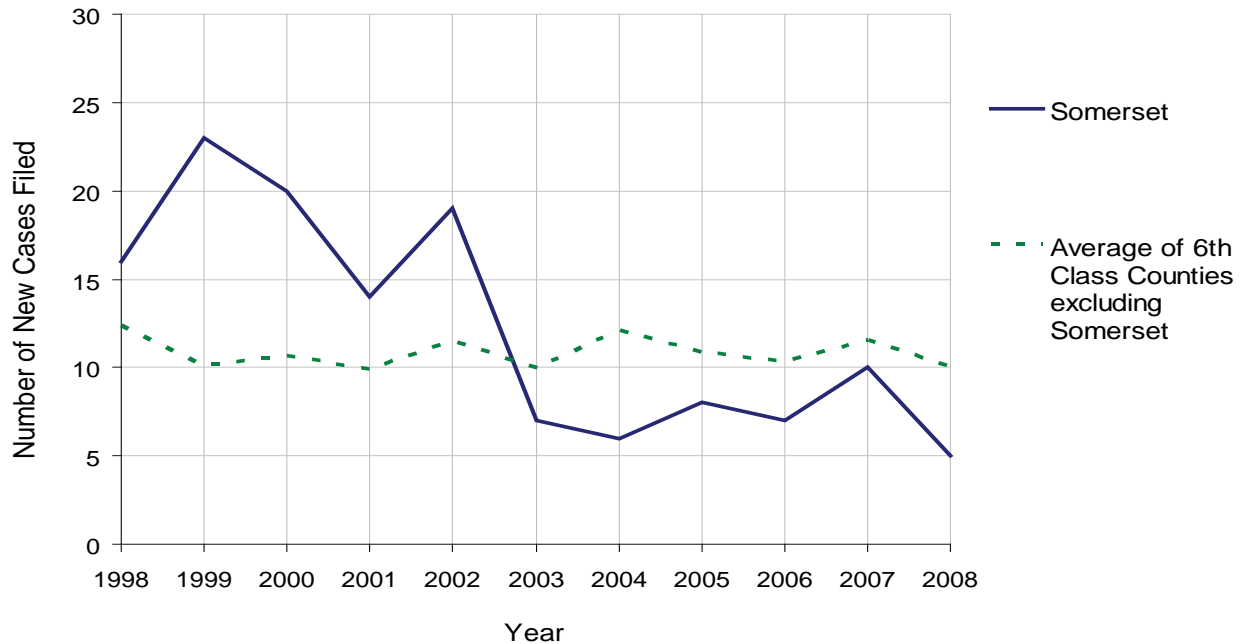
SOMERSET COUNTY

2008 Population Estimate: 77,454
 Class of County: 6th
 No. of Common Pleas Court Judgeships: 3



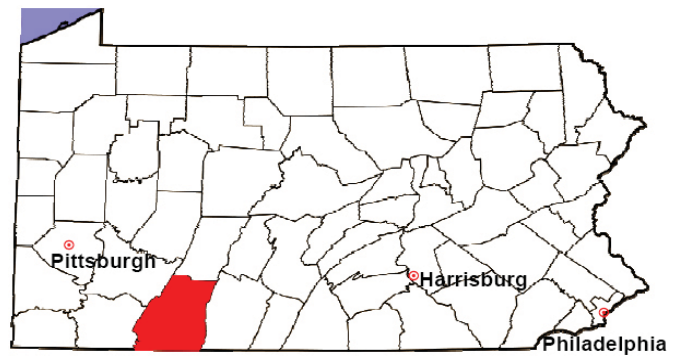
2008 Appointment of Guardians	No. of Petitions	%
Cases Pending 1/1/08	1	
New Cases Filed in '08	5	
Cases Available for Processing	6	
Processed By:		
Contested before a Judge	0	0.0%
Uncontested	5	100.0%
Other	0	0.0%
Cases Processed	5	100.0%
Cases Pending 12/31/08	1	

Appointment of Guardians New Cases Filed, 1998-2008



SOMERSET COUNTY

2008 Population Estimate: 77,454
 Class of County: 6th
 No. of Common Pleas Court Judgeships: 3



2008 Jury Activity & Performance Measures		
A. Juror Days	1,238	
B. Number Sent to Voir Dire	1,119	
Voir Dire Attendance Rate $(B/A * 100)$		90.4%
C. Number of Voir Dires Started	27	
Juror Days Per Voir Dire Starts (A/C)		46
D. Number of Jurors Selected	378	
Juror Selection Rate $(D/B * 100)$		33.8%
E. Number of Jury Trials Started	15	
Juror Days Per Trial Starts (A/E)		83
Number of Voir Dires Not Resulting in Trial $(C-E)$		12
Percent Voir Dires Not Resulting in Trial $(C-E)/C * 100$		44.4%
F. Pool Days	10	
G. Zero Panel Days	1	
Percent Zero Panel Days $(G/F * 100)$		10.0%
H. Total Juror Fees Incurred	\$23,837	
Average Juror Fees Per Trial (H/E)		\$1,589

Average Juror Fees Per Trial, 1998-2008

