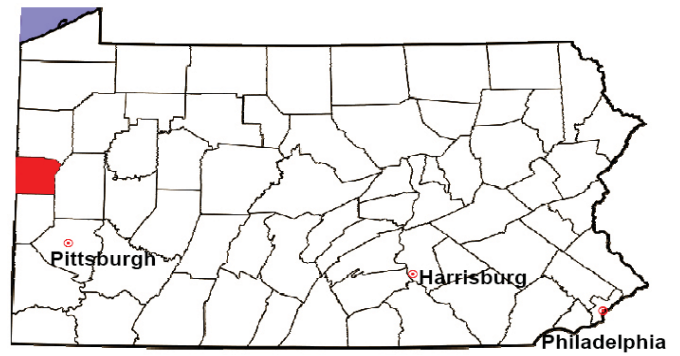


LAWRENCE COUNTY

2008 Population Estimate: 90,272

Class of County: 5th

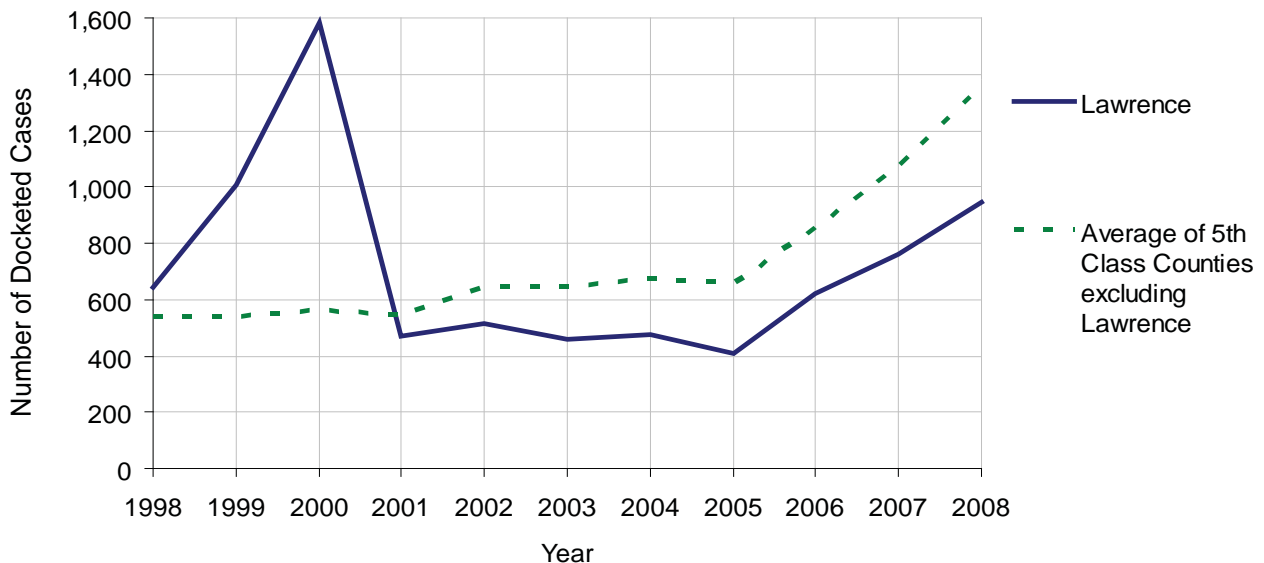
No. of Common Pleas Court Judgeships: 4



2008 Civil		Civil Action		
Docketed Cases		947		
Arbitrated Cases		41		
Trial-Ready Cases:		Civil Action	Other	Total
Cases Pending 1/1/08		62	0	62
Became Trial Ready in '08		47	0	47
Restored to Trial List		0	0	0
Appeals from Arbitration		12	0	12
Cases Available for Trial		121	0	121
Disposed By:				
Settlement		50	0	50
Non-Jury Trial		6	0	6
Jury Trial		7	0	7
Stricken from Trial List		3	0	3
Other		5	0	5
Cases Disposed		71	0	71
Cases Pending 12/31/08		50	0	50

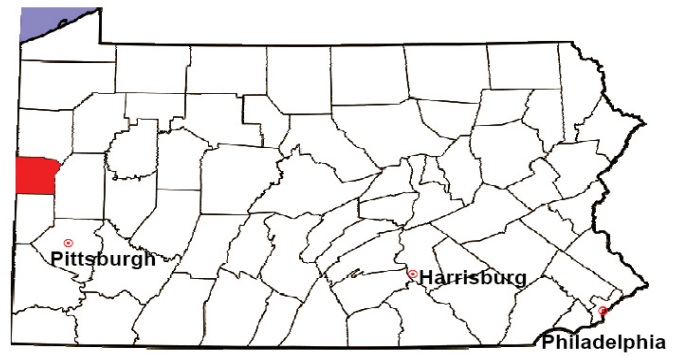
Age of Trial-Ready Cases as of 12/31/08 (Civil Action Only)		
0-6 months	37	74%
7-12 months	6	12%
13-18 months	5	10%
19-24 months	1	2%
25-30 months	0	0%
31-36 months	0	0%
Over 36 months	1	2%
Total	50	100%

Docketed Cases, 1998-2008



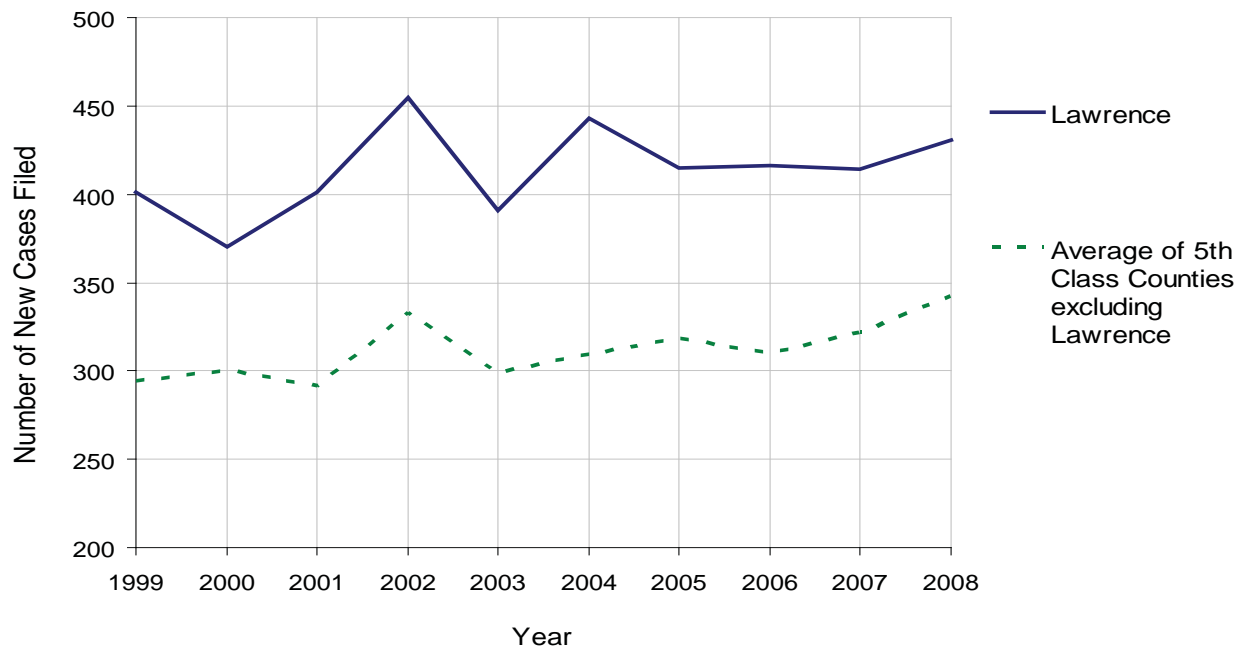
LAWRENCE COUNTY

2008 Population Estimate: 90,272
 Class of County: 5th
 No. of Common Pleas Court Judgeships: 4



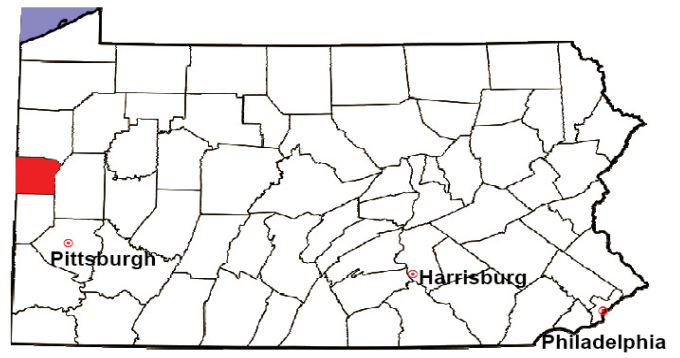
2008 Protection From Abuse	No. of Petitions	%
Cases Pending 1/1/08	83	
New Cases Filed in '08	431	
Cases Available for Processing	514	
Processed By:		
Final Order After Hearing	106	22.3%
Final Order by Stipulation or Agreement	147	30.9%
Dismissal	124	26.1%
Withdrawal	92	19.3%
Other	7	1.5%
Cases Processed	476	100.0%
Cases Pending 12/31/08	38	

PFA New Cases Filed, 1999-2008



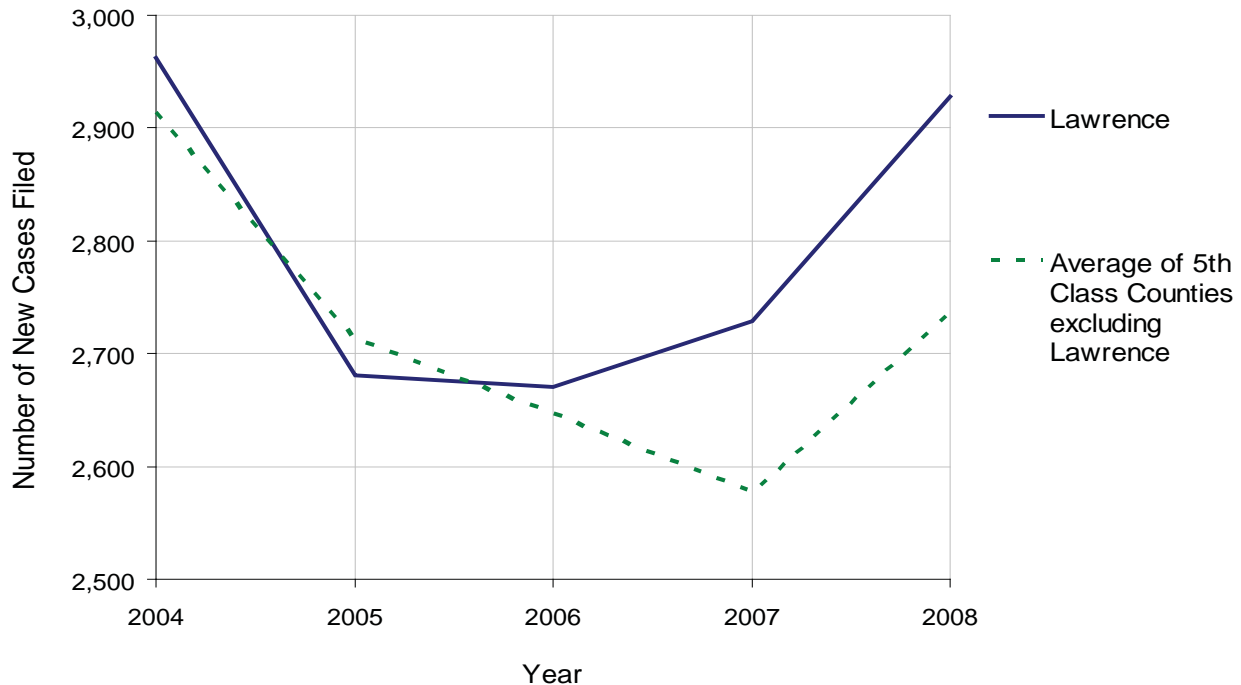
LAWRENCE COUNTY

2008 Population Estimate: 90,272
 Class of County: 5th
 No. of Common Pleas Court Judgeships: 4



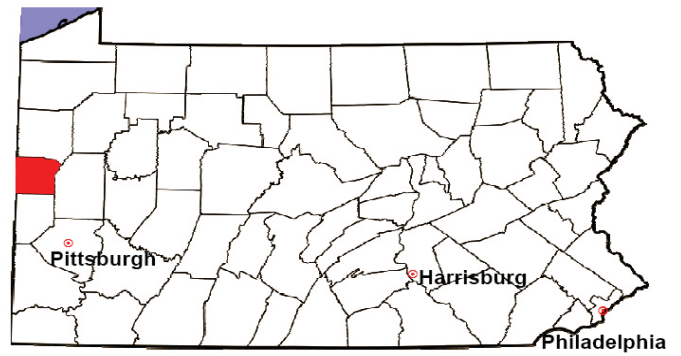
2008 Spousal & Child Support	No. of Petitions	%
Cases Pending 1/1/08	502	
New Cases Filed in '08	2,928	
Dockets Transferred In (+)	21	
Dockets Transferred Out (-)	18	
Cases Available for Processing	3,433	
Processed By:		
Judge	114	4.0%
Intake Officer	2,730	96.0%
Hearing Officer	0	0.0%
Other	0	0.0%
Cases Processed	2,844	100.0%
Cases Pending 12/31/08	589	

Spousal & Child Support New Cases Filed, 1998-2008



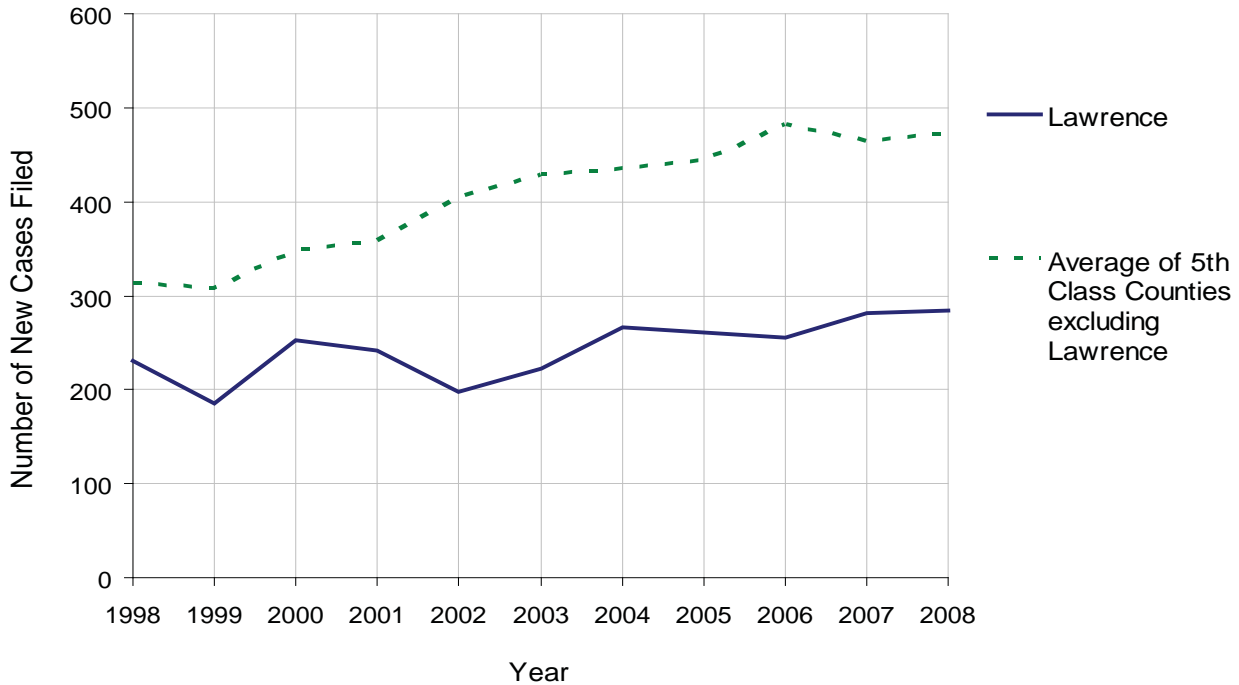
LAWRENCE COUNTY

2008 Population Estimate: 90,272
 Class of County: 5th
 No. of Common Pleas Court Judgeships: 4



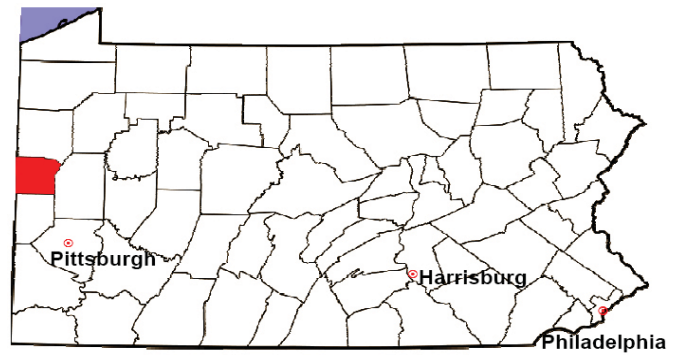
2008 Custody/Partial Custody/Visitation	No. of Petitions	%
Cases Pending 1/1/08	42	
New Cases Filed in '08	284	
Cases Available for Processing	326	
Processed By:		
Judge	320	99.7%
Non-Judicial Officer	0	0.0%
Other	1	0.3%
Cases Processed	321	100.0%
Cases Pending 12/31/08	5	

Custody/Partial Custody/Visitation New Cases Filed
 1998-2008



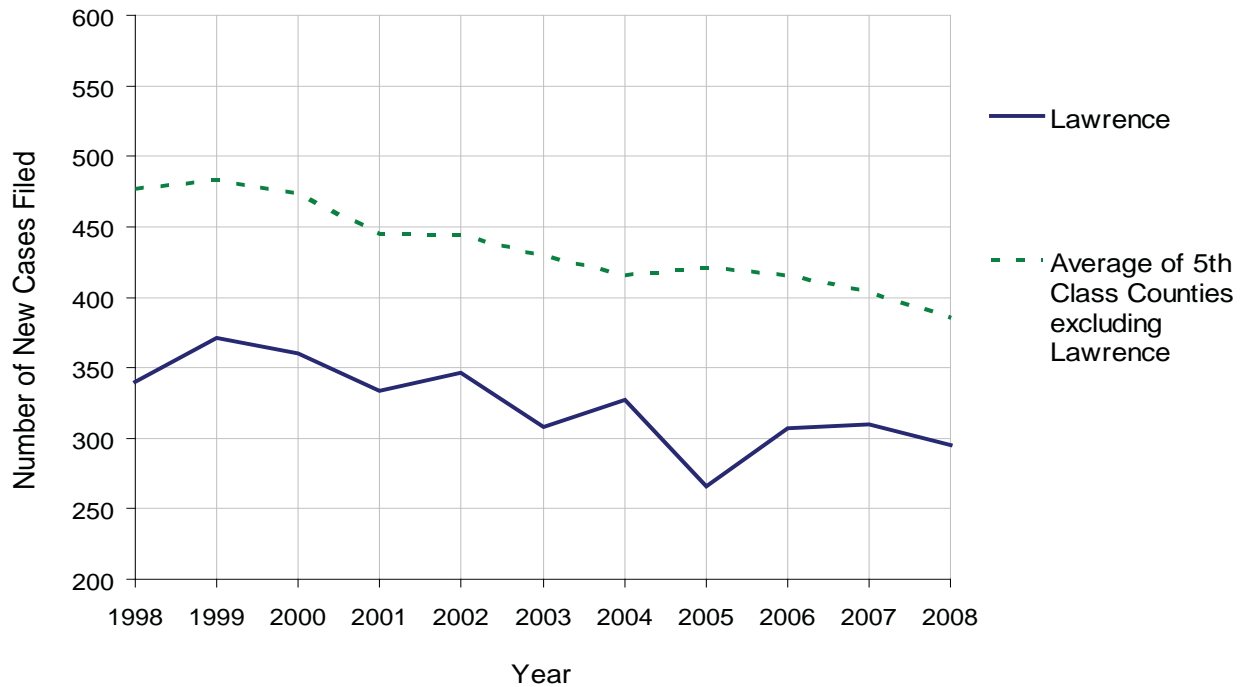
LAWRENCE COUNTY

2008 Population Estimate: 90,272
 Class of County: 5th
 No. of Common Pleas Court Judgeships: 4



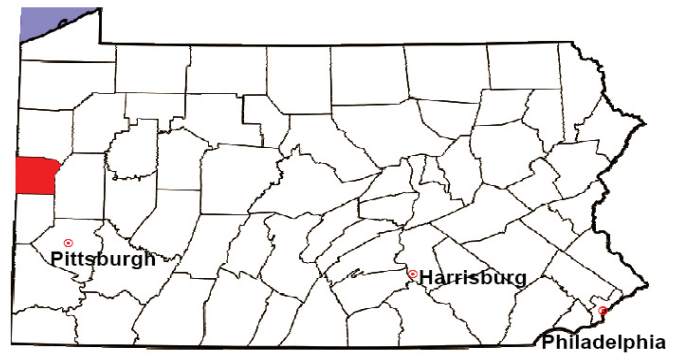
2008 Divorce	No. of Petitions	%
Cases Pending 1/1/08	310	
New Cases Filed in '08	295	
Cases Available for Processing	605	
Processed By:		
Contested Before a Judge	98	29.9%
Contested Before a Master	0	0.0%
Uncontested	161	49.1%
Other	69	21.0%
Cases Processed	328	100.0%
Cases Pending 12/31/08	277	

Divorce New Cases Filed, 1998-2008



LAWRENCE COUNTY

2008 Population Estimate: 90,272
 Class of County: 5th
 No. of Common Pleas Court Judgeships: 4



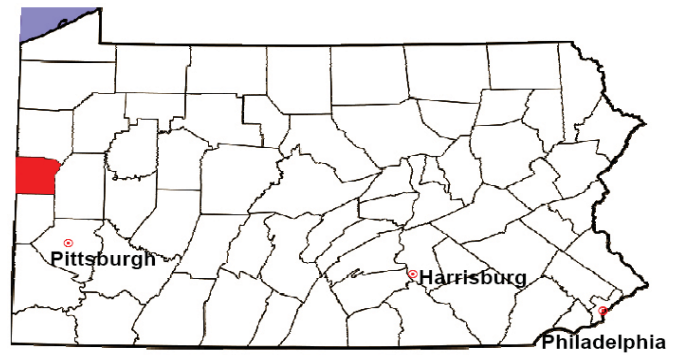
2008 Juvenile Dependency Abuse/Neglect	No. of Petitions	%
Cases Pending 1/1/08	4	
New Cases Filed in '08	136	
Cases Available for Processing	140	
Processed By:		
Judge	4	2.9%
Non-Judicial Officer	111	81.0%
Other	22	16.1%
Cases Processed	137	100.0%
Cases Pending 12/31/08	3	

Abuse/Neglect New Cases Filed, 2000-2008



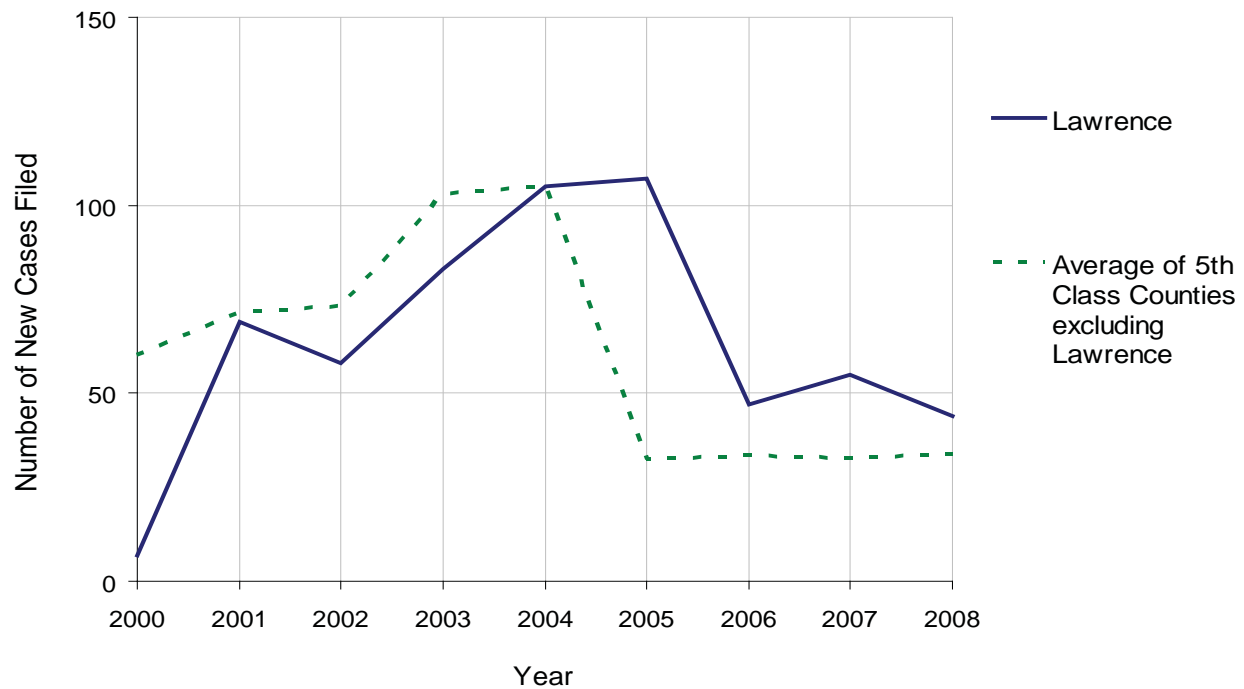
LAWRENCE COUNTY

2008 Population Estimate: 90,272
 Class of County: 5th
 No. of Common Pleas Court Judgeships: 4



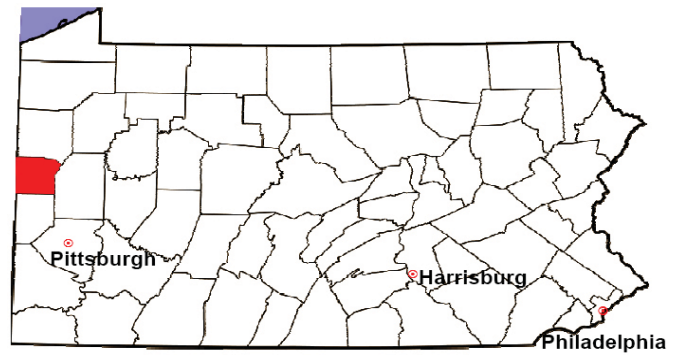
2008 Juvenile Dependency Status Offenses	No. of Petitions	%
Cases Pending 1/1/08	0	
New Cases Filed in '08	44	
Cases Available for Processing	44	
Processed By:		
Judge	0	0.0%
Non-Judicial Officer	41	93.2%
Other	3	6.8%
Cases Processed	44	100.0%
Cases Pending 12/31/08	0	

Status Offenses New Cases Filed, 2000-2008



LAWRENCE COUNTY

2008 Population Estimate: 90,272
 Class of County: 5th
 No. of Common Pleas Court Judgeships: 4



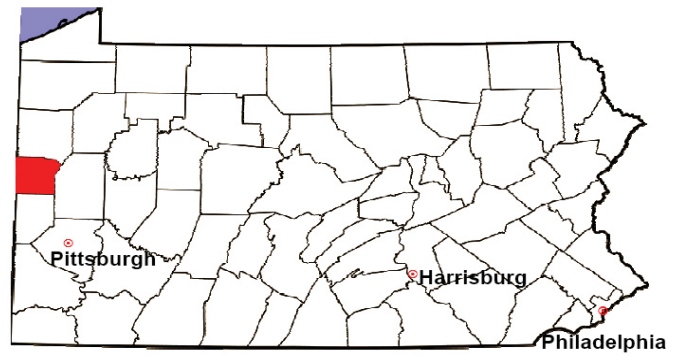
2008 Juvenile Delinquency	No. of Referrals	%
Cases Pending 1/1/08	192	
New Referrals in '08	462	
Cases Available for Processing	654	
Processed By:		
Judge	101	24.6%
Non-Judicial Officer	223	54.4%
Other	86	21.0%
Cases Processed	410	100.0%
Cases Pending 12/31/08	244	

Juvenile Delinquency New Referrals, 1998-2008



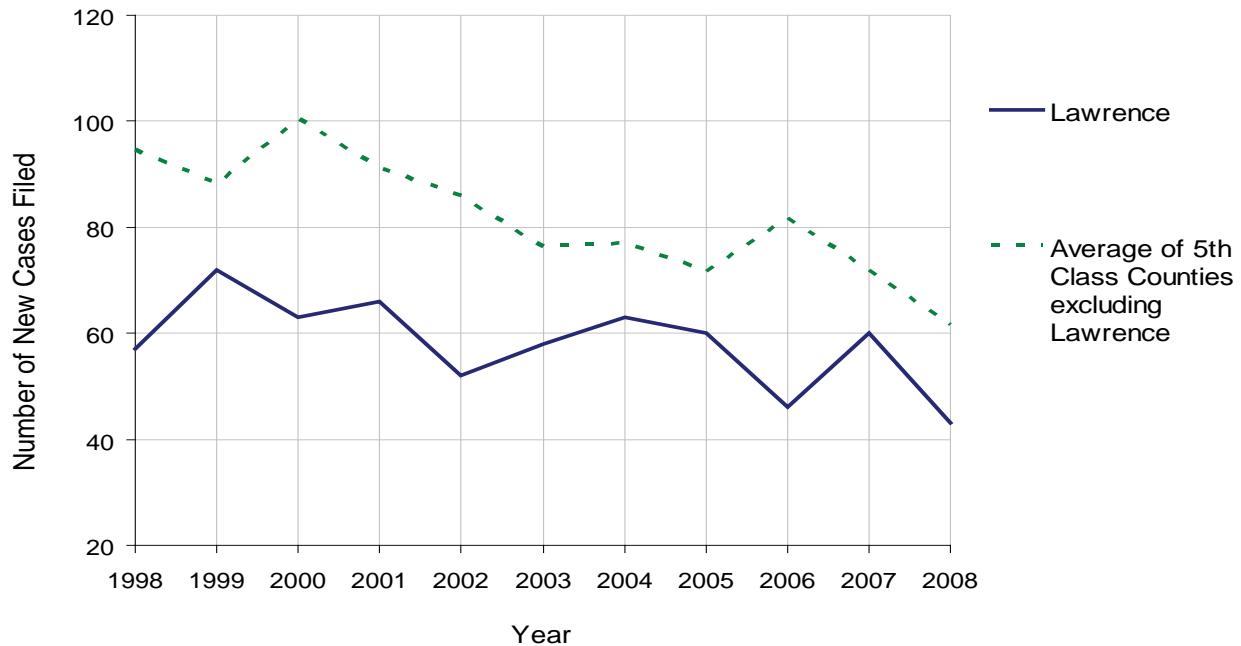
LAWRENCE COUNTY

2008 Population Estimate: 90,272
 Class of County: 5th
 No. of Common Pleas Court Judgeships: 4



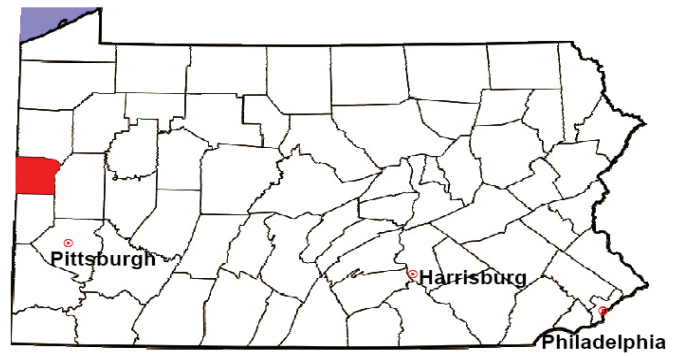
2008 Accounts	No. of Accounts	%
Cases Pending 1/1/08	23	
New Cases Filed in '08	43	
Cases Available for Processing	66	
Processed By:		
Contested before a Judge	0	0.0%
Contested before a Non-Judicial Officer	0	0.0%
Uncontested	42	100.0%
Other	0	0.0%
Cases Processed	42	100.0%
Cases Pending 12/31/08	24	

Accounts New Cases Filed, 1998-2008



LAWRENCE COUNTY

2008 Population Estimate: 90,272
 Class of County: 5th
 No. of Common Pleas Court Judgeships: 4

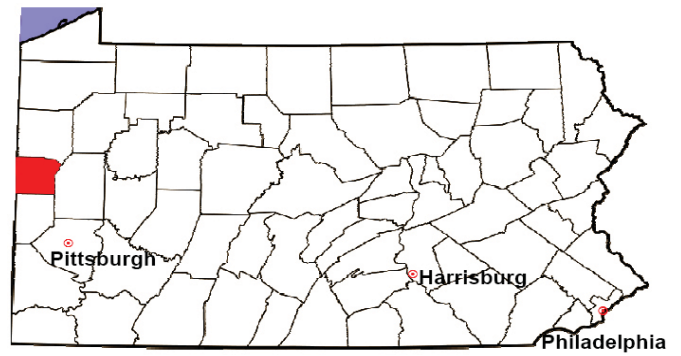


2008 Adoptions		No. of Cases	%
Cases Pending 1/1/08		18	
New Cases Filed in '08		43	
Cases Available for Processing		61	
Processed By:			
Contested before a Judge	Granted	0	0.0%
	Denied	0	0.0%
Uncontested	Granted	36	100.0%
	Denied	0	0.0%
Other		0	0.0%
Cases Processed		36	100.0%
Cases Pending 12/31/08		25	

Note: Prior to 2008, each petition was counted as one new case, regardless of the number of children listed on the petition. Starting in 2008, each child listed on a petition is counted as a separate case. Therefore, statistics for 2008 should not be compared with those for previous years.

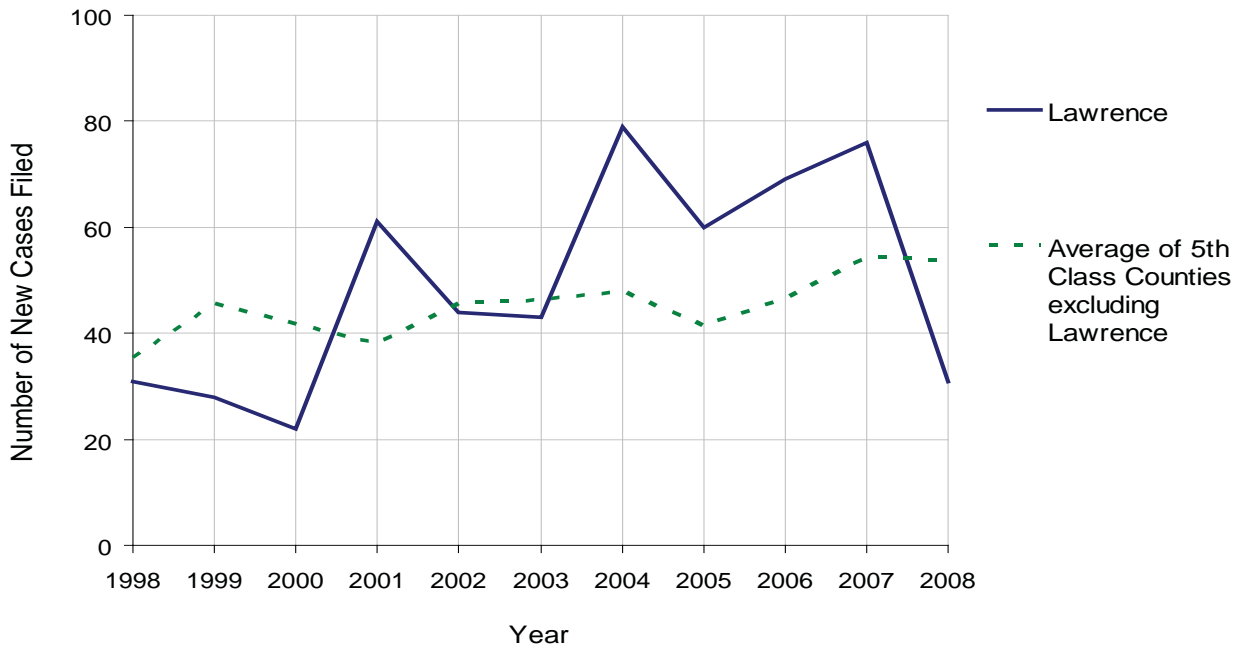
LAWRENCE COUNTY

2008 Population Estimate: 90,272
 Class of County: 5th
 No. of Common Pleas Court Judgeships: 4



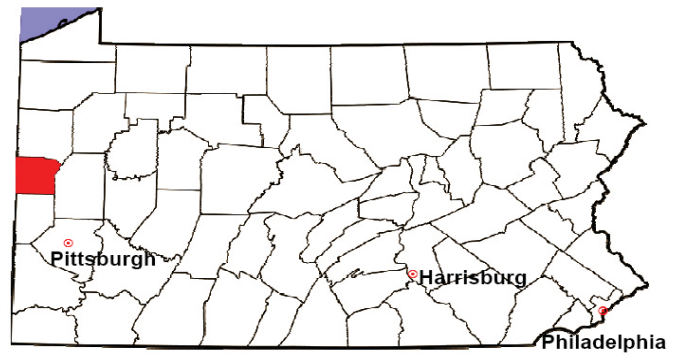
2008 Relinquishments/Terminations	No. of Petitions	%
Cases Pending 1/1/08	78	
New Cases Filed in '08	31	
Cases Available for Processing	109	
Processed By:		
Contested before a Judge	0	0.0%
Uncontested	60	100.0%
Other	0	0.0%
Cases Processed	60	100.0%
Cases Pending 12/31/08	49	

Relinquishments/Terminations New Cases Filed, 1998-2008



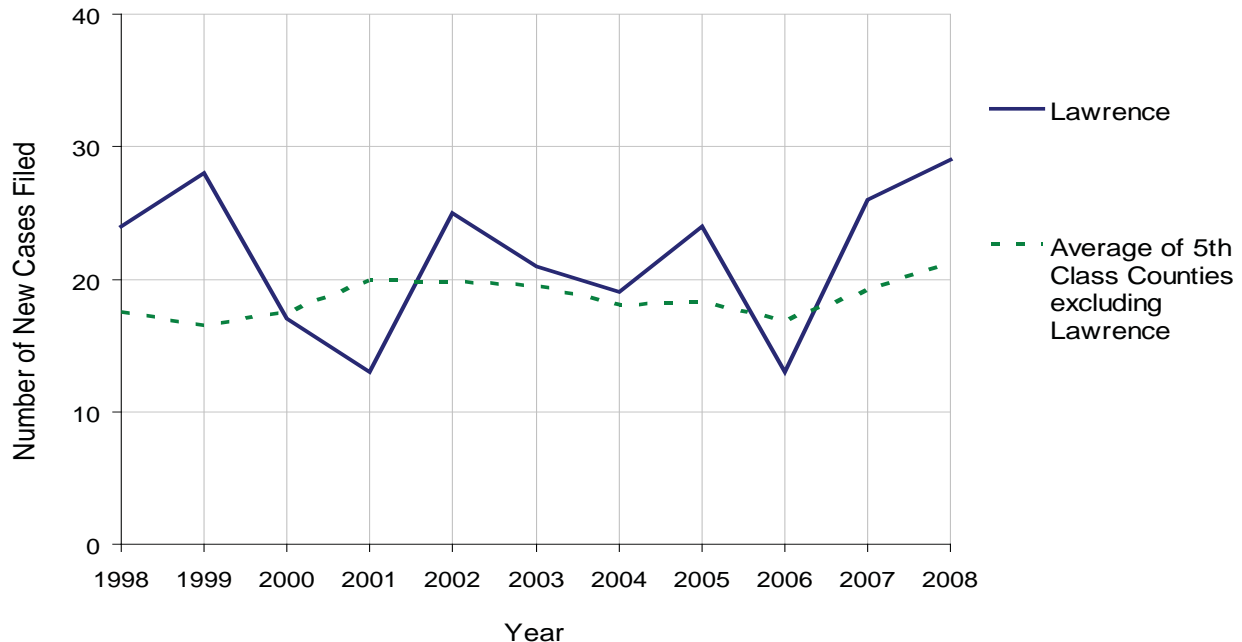
LAWRENCE COUNTY

2008 Population Estimate: 90,272
 Class of County: 5th
 No. of Common Pleas Court Judgeships: 4



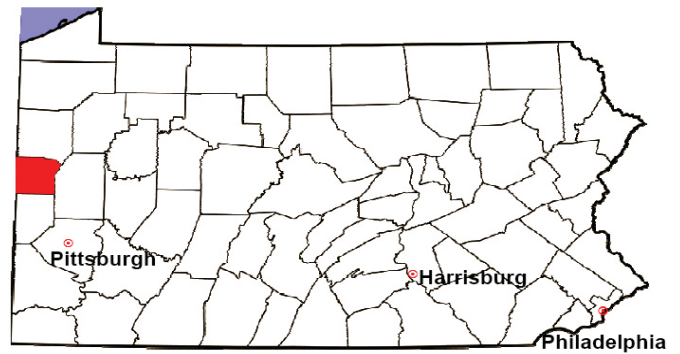
2008 Appointment of Guardians	No. of Petitions	%
Cases Pending 1/1/08	41	
New Cases Filed in '08	29	
Cases Available for Processing	70	
Processed By:		
Contested before a Judge	0	0.0%
Uncontested	16	100.0%
Other	0	0.0%
Cases Processed	16	100.0%
Cases Pending 12/31/08	54	

Appointment of Guardians New Cases Filed, 1998-2008



LAWRENCE COUNTY

2008 Population Estimate: 90,272
 Class of County: 5th
 No. of Common Pleas Court Judgeships: 4



2008 Jury Activity & Performance Measures		
A. Juror Days	3,405	
B. Number Sent to Voir Dire	1,478	
Voir Dire Attendance Rate $(B/A * 100)$		43.4%
C. Number of Voir Dires Started	33	
Juror Days Per Voir Dire Starts (A/C)		103
D. Number of Jurors Selected	453	
Juror Selection Rate $(D/B * 100)$		30.6%
E. Number of Jury Trials Started	30	
Juror Days Per Trial Starts (A/E)		114
Number of Voir Dires Not Resulting in Trial $(C-E)$		3
Percent Voir Dires Not Resulting in Trial $(C-E)/C * 100$		9.1%
F. Pool Days	45	
G. Zero Panel Days	20	
Percent Zero Panel Days $(G/F * 100)$		44.4%
H. Total Juror Fees Incurred	\$55,608	
Average Juror Fees Per Trial (H/E)		\$1,854

Average Juror Fees Per Trial, 1998-2008

