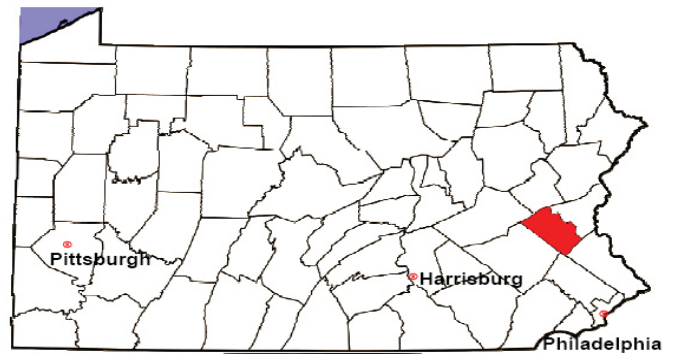


LEHIGH COUNTY

2008 Population Estimate: 339,989

Class of County: 3rd

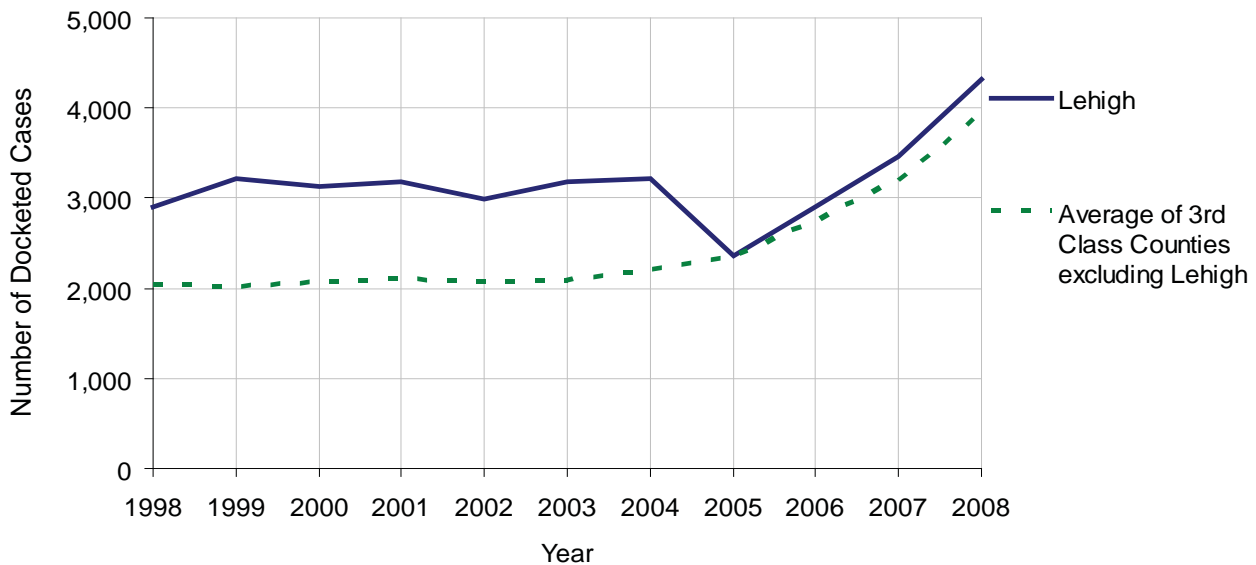
No. of Common Pleas Court Judgeships: 10



2008 Civil		Civil Action		
Docketed Cases		4,326		
Arbitrated Cases		711		
Trial-Ready Cases:		Civil Action	Other	Total
Cases Pending 1/1/08		337	18	355
Became Trial Ready in '08		409	55	464
Restored to Trial List		16	0	16
Appeals from Arbitration		104	1	105
Cases Available for Trial		866	74	940
Disposed By:				
Settlement		275	14	289
Non-Jury Trial		28	3	31
Jury Trial		28	1	29
Stricken from Trial List		102	4	106
Other		33	25	58
Cases Disposed		466	47	513
Cases Pending 12/31/08		400	27	427

Age of Trial-Ready Cases as of 12/31/08 (Civil Action Only)		
0-6 months	215	54%
7-12 months	120	30%
13-18 months	34	9%
19-24 months	16	4%
25-30 months	12	3%
31-36 months	1	0%
Over 36 months	2	1%
Total	400	100%

Docketed Cases, 1998-2008

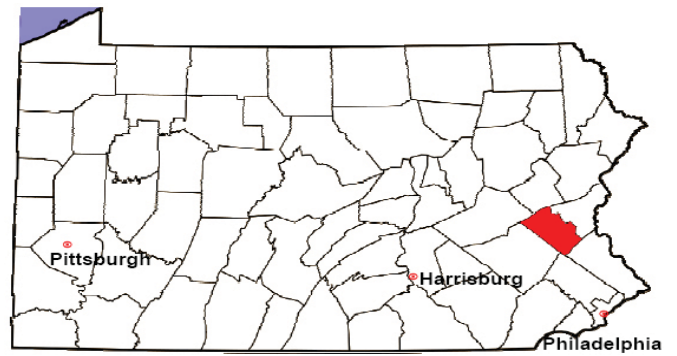


LEHIGH COUNTY

2008 Population Estimate: 339,989

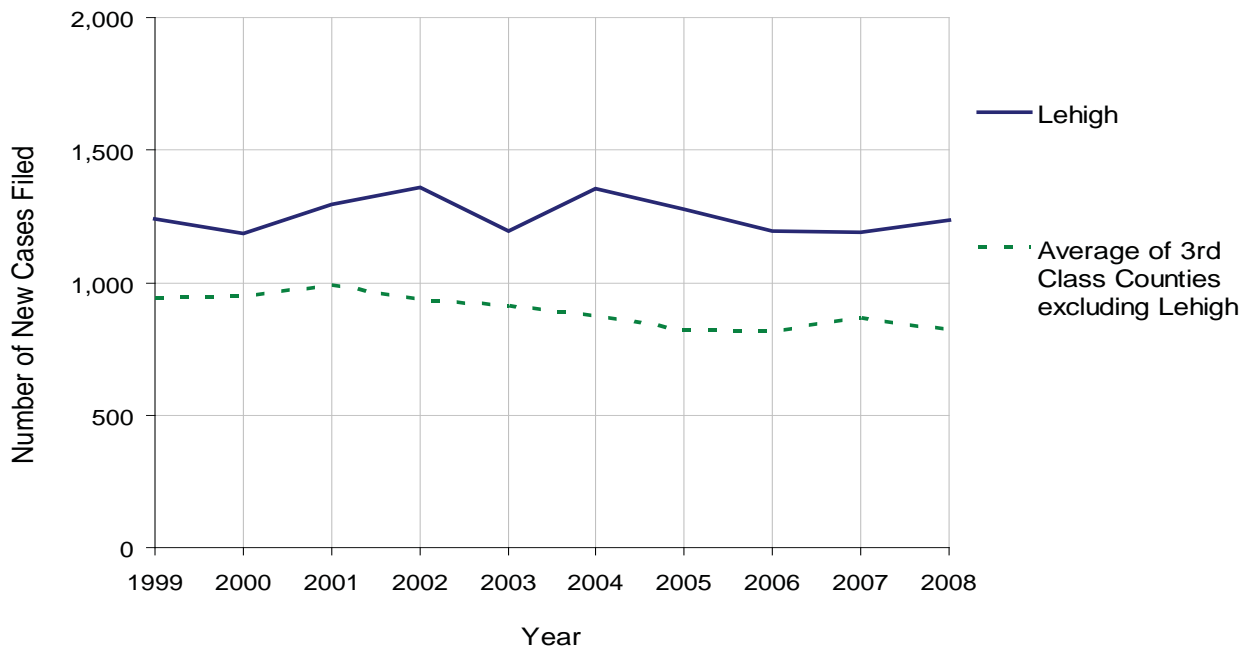
Class of County: 3rd

No. of Common Pleas Court Judgeships: 10



2008 Protection From Abuse	No. of Petitions	%
Cases Pending 1/1/08	98	
New Cases Filed in '08	1,234	
Cases Available for Processing	1,332	
Processed By:		
Final Order After Hearing	541	43.3%
Final Order by Stipulation or Agreement	154	12.3%
Dismissal	279	22.3%
Withdrawal	244	19.5%
Other	31	2.5%
Cases Processed	1,249	100.0%
Cases Pending 12/31/08	83	

PFA New Cases Filed, 1999-2008

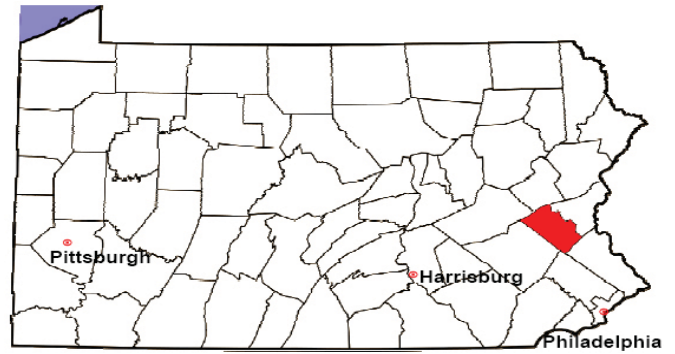


LEHIGH COUNTY

2008 Population Estimate: 339,989

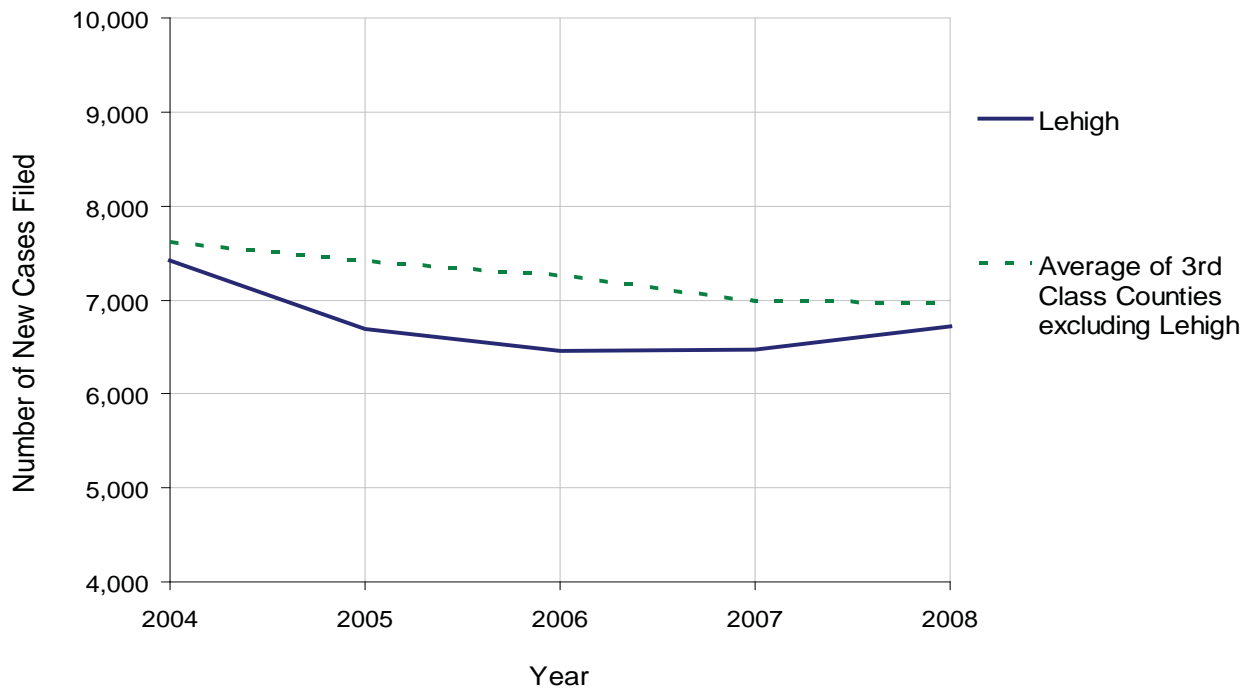
Class of County: 3rd

No. of Common Pleas Court Judgeships: 10



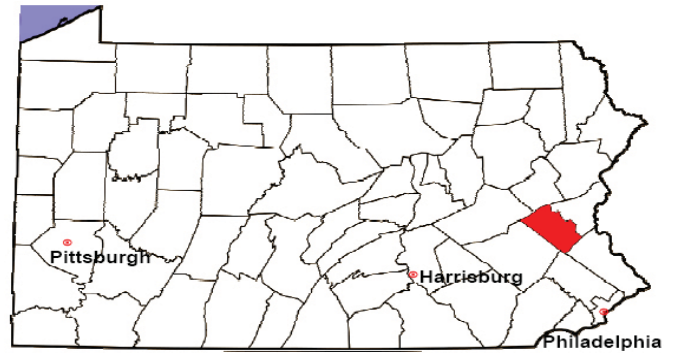
2008 Spousal & Child Support	No. of Petitions	%
Cases Pending 1/1/08	1,783	
New Cases Filed in '08	6,722	
Dockets Transferred In (+)	134	
Dockets Transferred Out (-)	118	
Cases Available for Processing	8,521	
Processed By:		
Judge	57	0.8%
Intake Officer	6,360	92.6%
Hearing Officer	451	6.6%
Other	0	0.0%
Cases Processed	6,868	100.0%
Cases Pending 12/31/08	1,653	

Spousal & Child Support New Cases Filed, 1998-2008



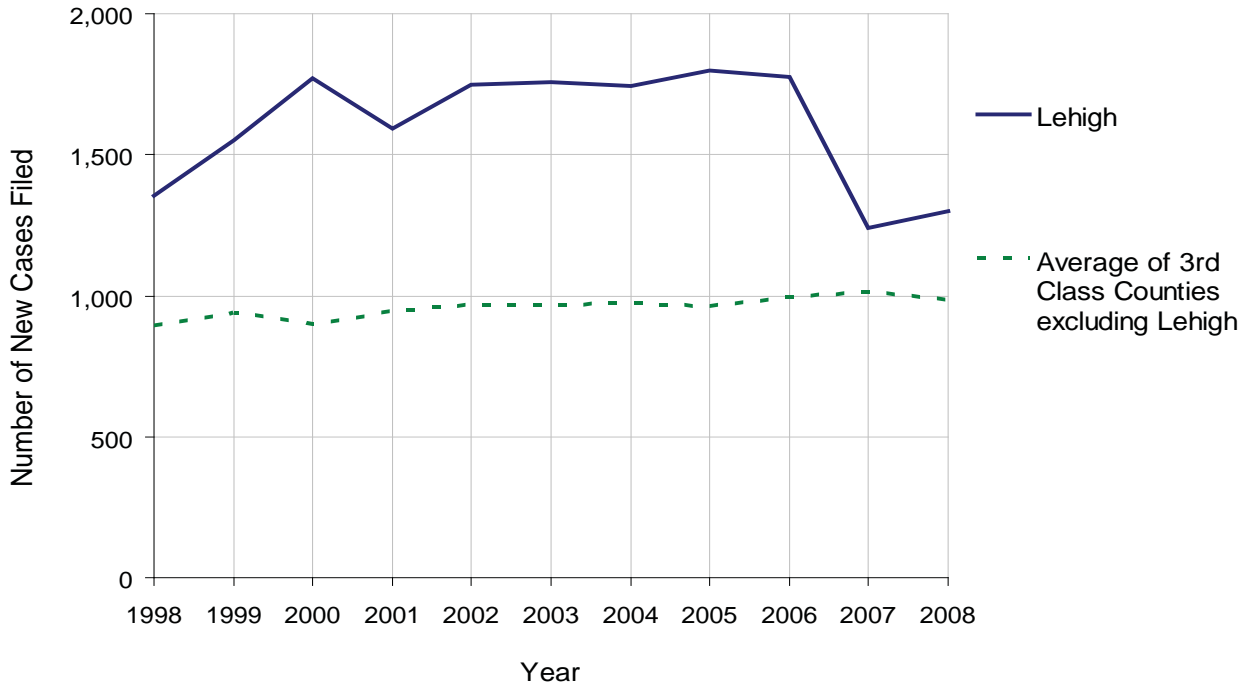
LEHIGH COUNTY

2008 Population Estimate: 339,989
 Class of County: 3rd
 No. of Common Pleas Court Judgeships: 10



2008 Custody/Partial Custody/Visitation	No. of Petitions	%
Cases Pending 1/1/08	346	
New Cases Filed in '08	1,300	
Cases Available for Processing	1,646	
Processed By:		
Judge	96	6.8%
Non-Judicial Officer	971	68.9%
Other	342	24.3%
Cases Processed	1,409	100.0%
Cases Pending 12/31/08	237	

Custody/Partial Custody/Visitation New Cases Filed
 1998-2008

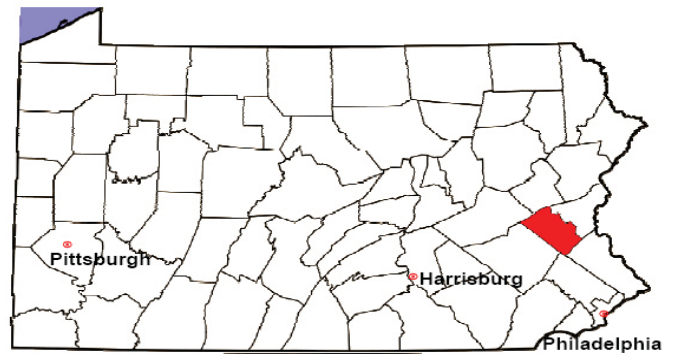


LEHIGH COUNTY

2008 Population Estimate: 339,989

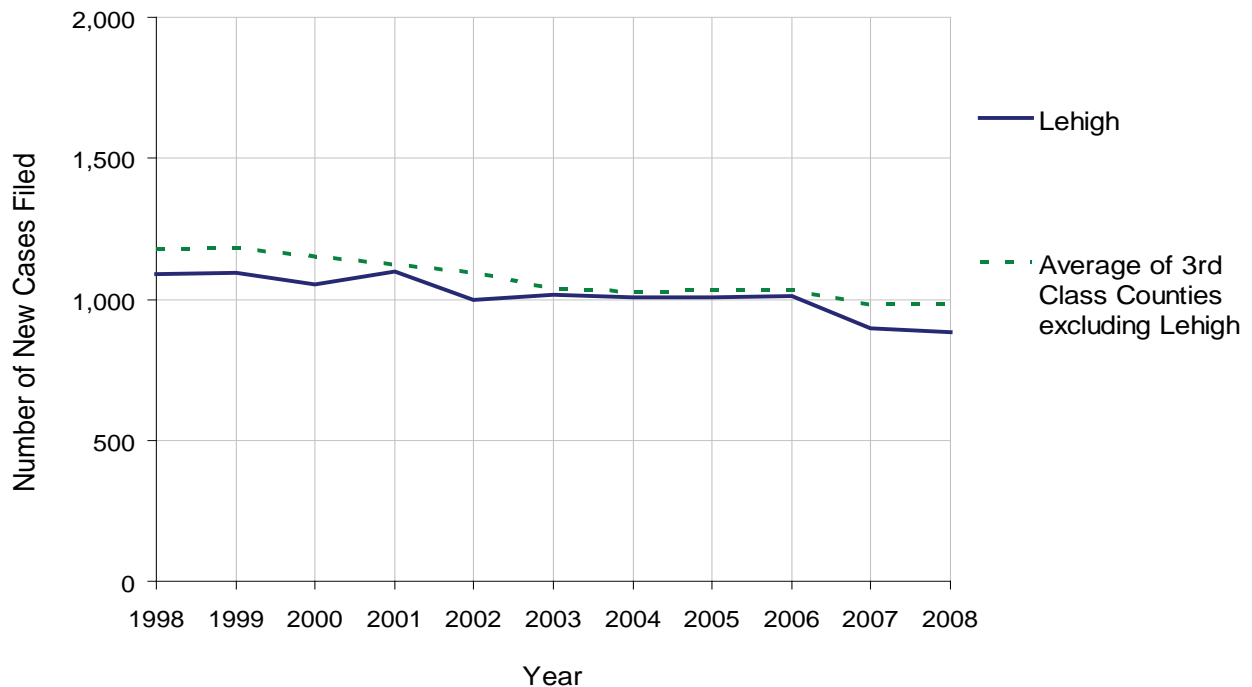
Class of County: 3rd

No. of Common Pleas Court Judgeships: 10



2008 Divorce	No. of Petitions	%
Cases Pending 1/1/08	1,696	
New Cases Filed in '08	884	
Cases Available for Processing	2,580	
Processed By:		
Contested Before a Judge	0	0.0%
Contested Before a Master	209	22.2%
Uncontested	546	58.0%
Other	187	19.9%
Cases Processed	942	100.0%
Cases Pending 12/31/08	1,638	

Divorce New Cases Filed, 1998-2008



LEHIGH COUNTY

2008 Population Estimate: 339,989

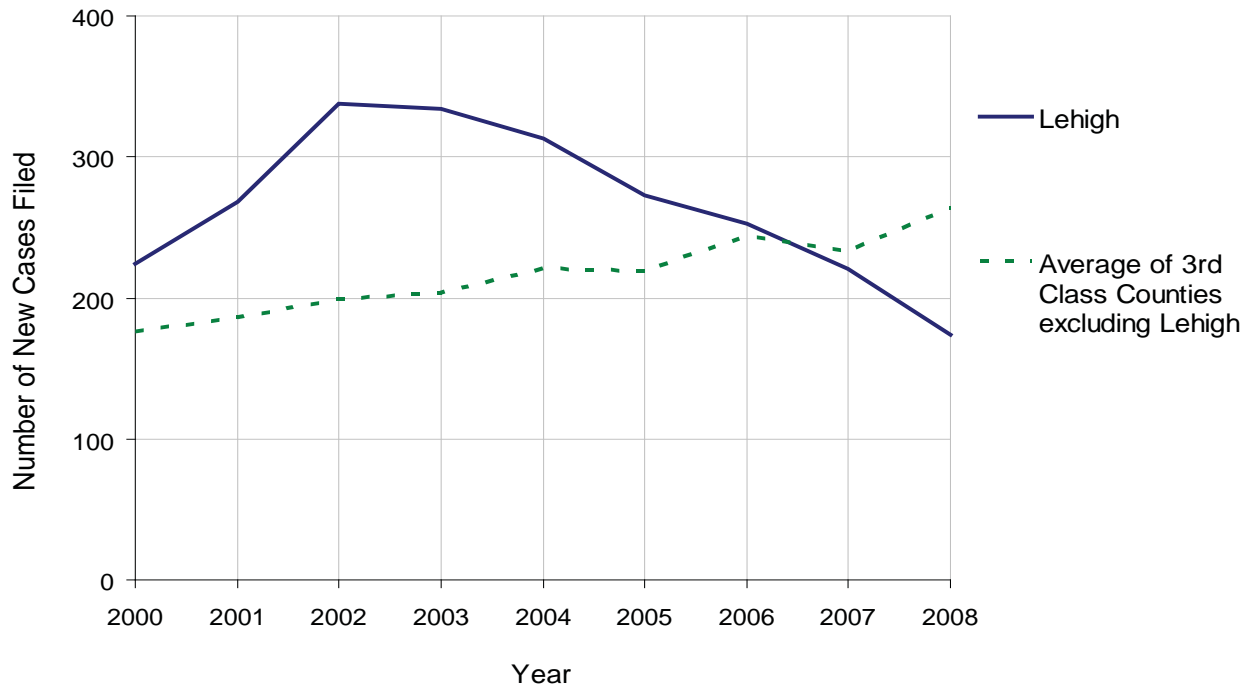
Class of County: 3rd

No. of Common Pleas Court Judgeships: 10



2008 Juvenile Dependency Abuse/Neglect	No. of Petitions	%
Cases Pending 1/1/08	5	
New Cases Filed in '08	174	
Cases Available for Processing	179	
Processed By:		
Judge	24	13.5%
Non-Judicial Officer	145	81.5%
Other	9	5.1%
Cases Processed	178	100.0%
Cases Pending 12/31/08	1	

Abuse/Neglect New Cases Filed, 2000-2008

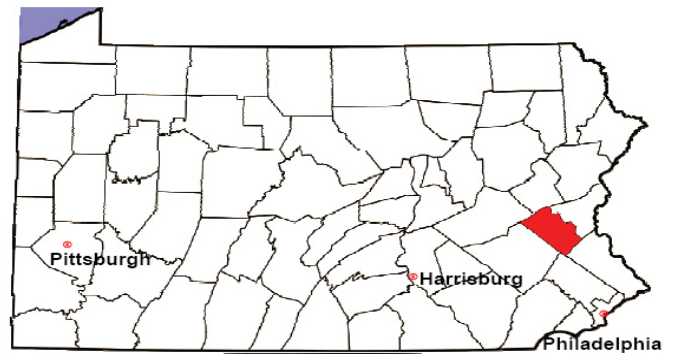


LEHIGH COUNTY

2008 Population Estimate: 339,989

Class of County: 3rd

No. of Common Pleas Court Judgeships: 10



2008 Juvenile Dependency Status Offenses

Not Applicable:

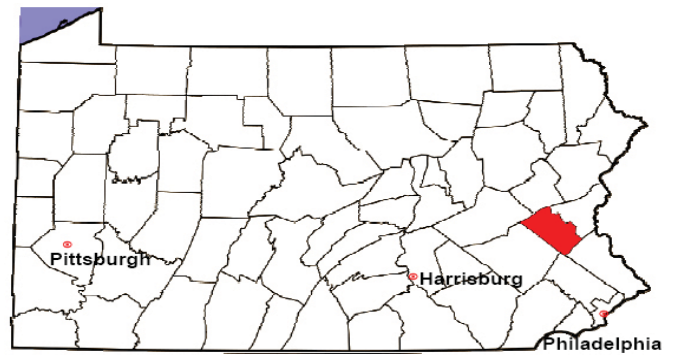
In some counties, status offense petitions are not filed.

LEHIGH COUNTY

2008 Population Estimate: 339,989

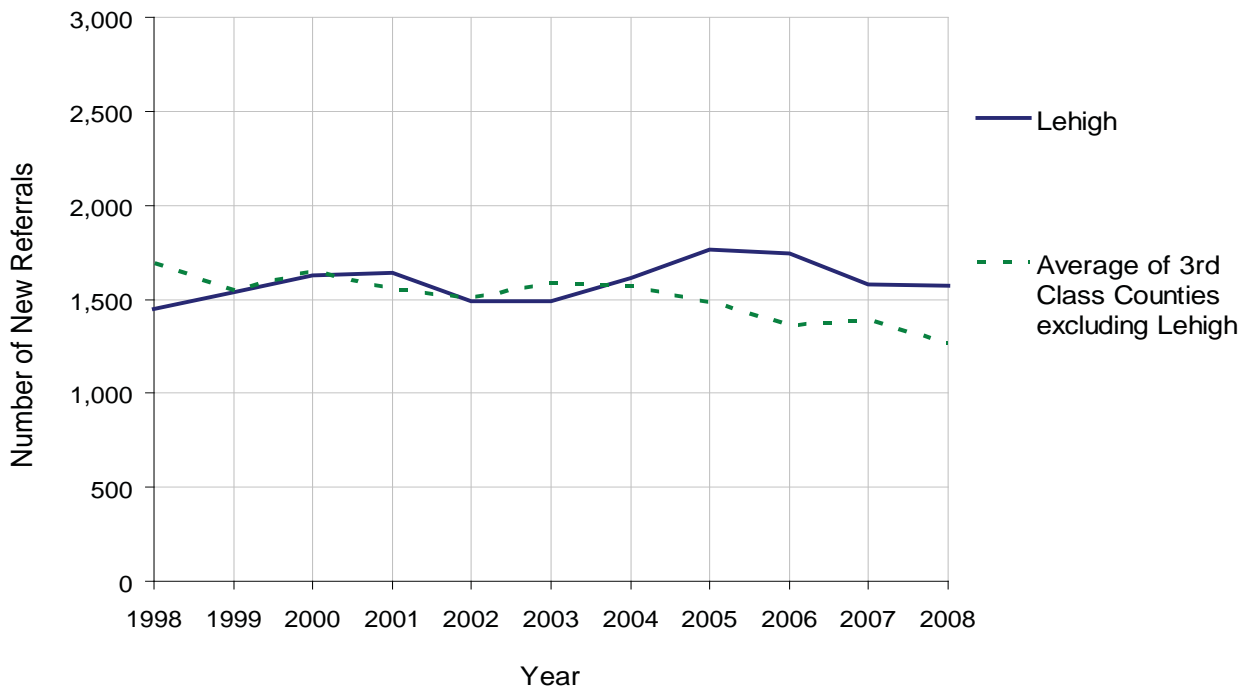
Class of County: 3rd

No. of Common Pleas Court Judgeships: 10



2008 Juvenile Delinquency	No. of Referrals	%
Cases Pending 1/1/08	217	
New Referrals in '08	1,573	
Cases Available for Processing	1,790	
Processed By:		
Judge	359	22.7%
Non-Judicial Officer	1,040	65.7%
Other	185	11.7%
Cases Processed	1,584	100.0%
Cases Pending 12/31/08	206	

Juvenile Delinquency New Referrals, 1998-2008



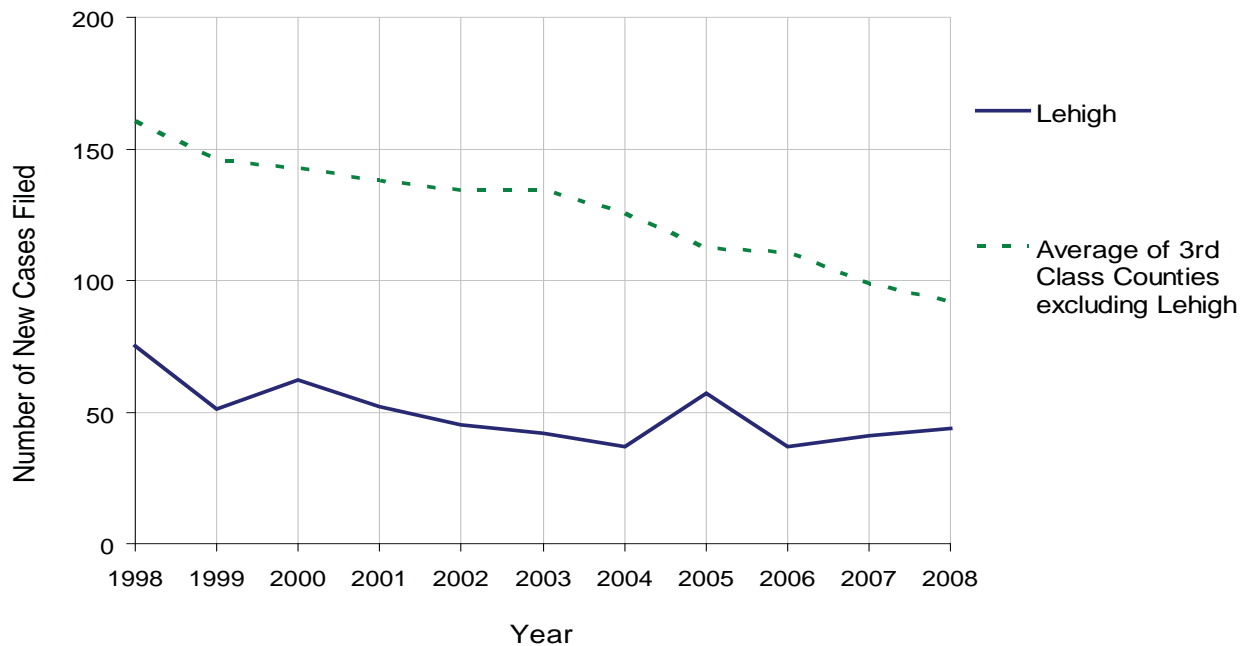
LEHIGH COUNTY

2008 Population Estimate: 339,989
 Class of County: 3rd
 No. of Common Pleas Court Judgeships: 10



2008 Accounts	No. of Accounts	%
Cases Pending 1/1/08	26	
New Cases Filed in '08	44	
Cases Available for Processing	70	
Processed By:		
Contested before a Judge	9	23.7%
Contested before a Non-Judicial Officer	0	0.0%
Uncontested	27	71.1%
Other	2	5.3%
Cases Processed	38	100.0%
Cases Pending 12/31/08	32	

Accounts New Cases Filed, 1998-2008

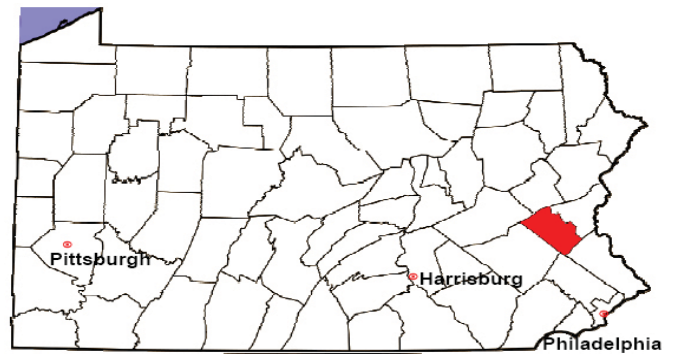


LEHIGH COUNTY

2008 Population Estimate: 339,989

Class of County: 3rd

No. of Common Pleas Court Judgeships: 10

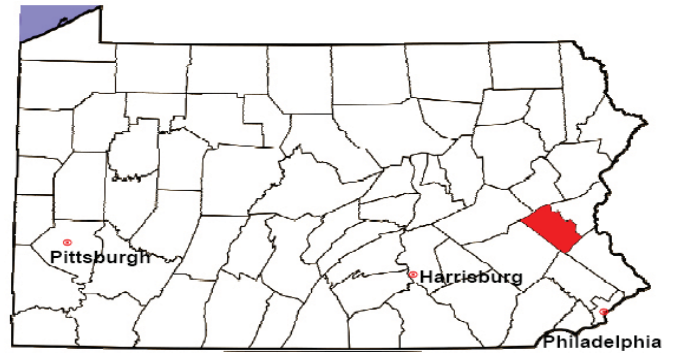


2008 Adoptions		No. of Cases	%
Cases Pending 1/1/08		8	
New Cases Filed in '08		82	
Cases Available for Processing		90	
Processed By:			
Contested before a Judge	Granted	0	0.0%
	Denied	0	0.0%
Uncontested	Granted	67	97.1%
	Denied	0	0.0%
Other		2	2.9%
Cases Processed		69	100.0%
Cases Pending 12/31/08		21	

Note: Prior to 2008, each petition was counted as one new case, regardless of the number of children listed on the petition. Starting in 2008, each child listed on a petition is counted as a separate case. Therefore, statistics for 2008 should not be compared with those for previous years.

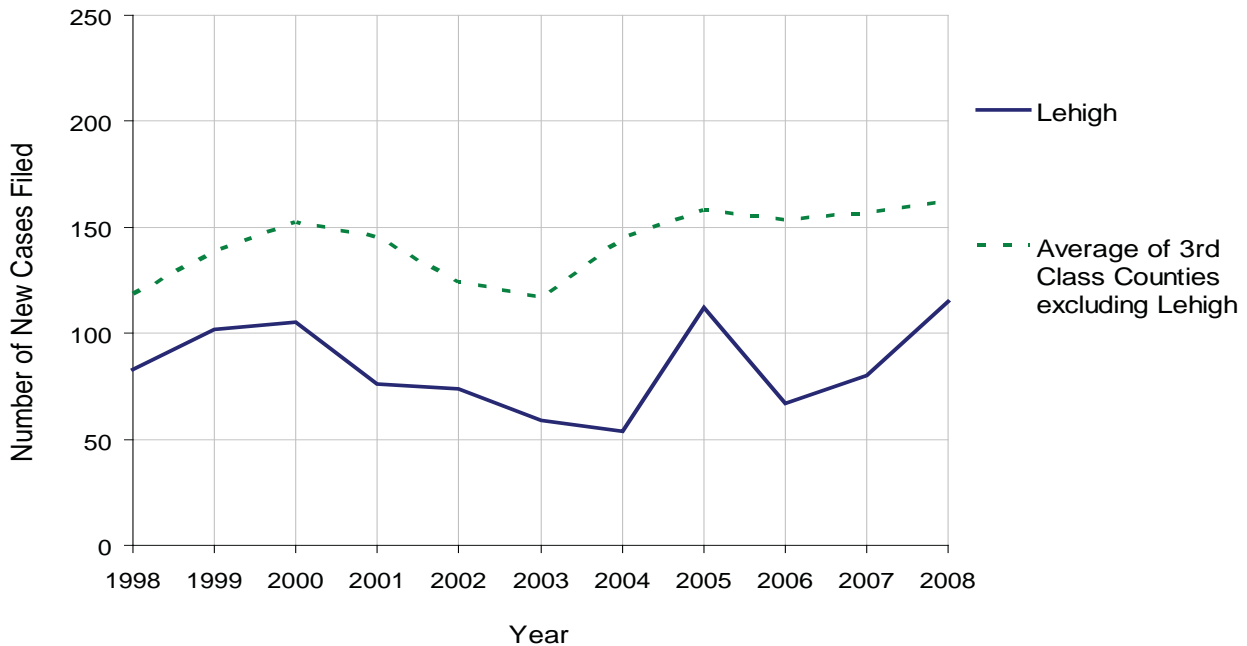
LEHIGH COUNTY

2008 Population Estimate: 339,989
 Class of County: 3rd
 No. of Common Pleas Court Judgeships: 10



2008 Relinquishments/Terminations	No. of Petitions	%
Cases Pending 1/1/08	20	
New Cases Filed in '08	115	
Cases Available for Processing	135	
Processed By:		
Contested before a Judge	8	11.0%
Uncontested	57	78.1%
Other	8	11.0%
Cases Processed	73	100.0%
Cases Pending 12/31/08	62	

Relinquishments/Terminations New Cases Filed, 1998-2008

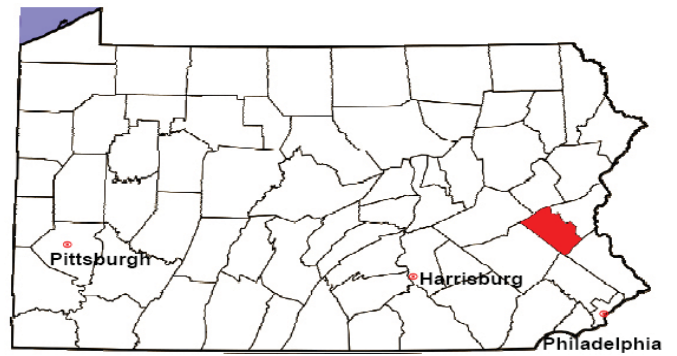


LEHIGH COUNTY

2008 Population Estimate: 339,989

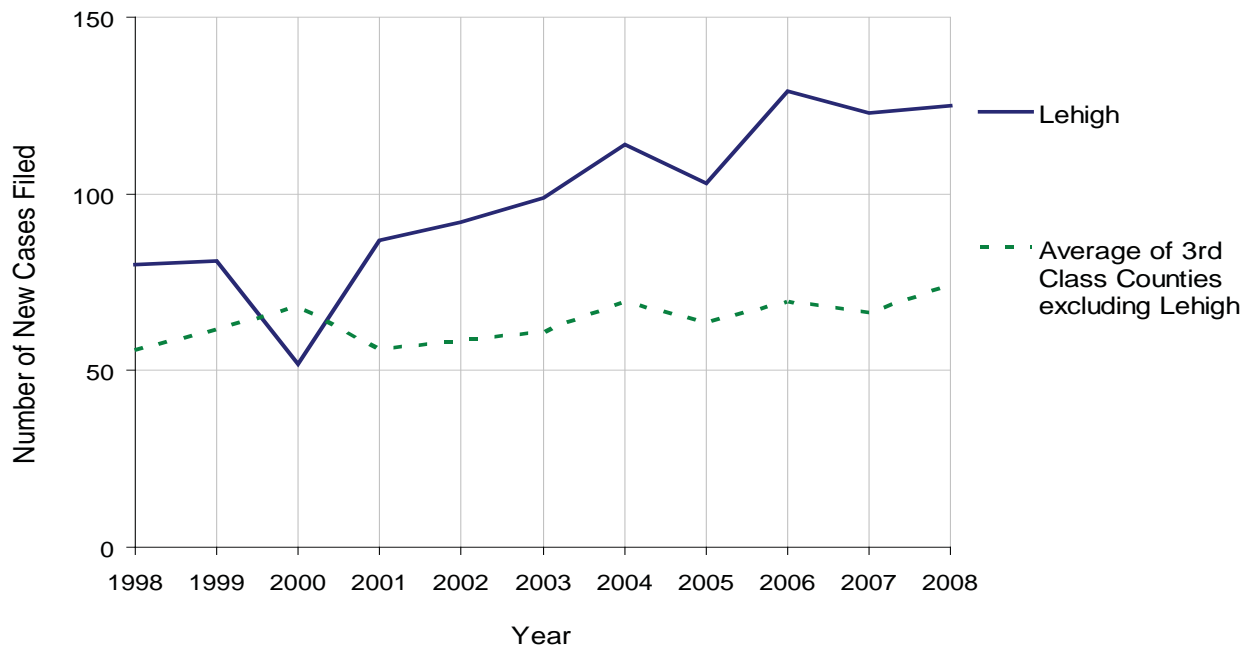
Class of County: 3rd

No. of Common Pleas Court Judgeships: 10



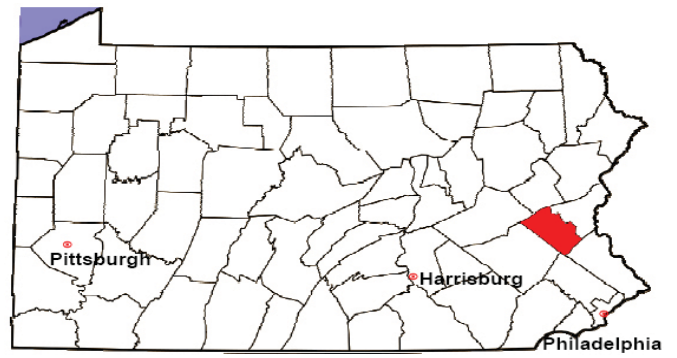
2008 Appointment of Guardians	No. of Petitions	%
Cases Pending 1/1/08	35	
New Cases Filed in '08	125	
Cases Available for Processing	160	
Processed By:		
Contested before a Judge	15	11.6%
Uncontested	72	55.8%
Other	42	32.6%
Cases Processed	129	100.0%
Cases Pending 12/31/08	31	

Appointment of Guardians New Cases Filed, 1998-2008



LEHIGH COUNTY

2008 Population Estimate: 339,989
 Class of County: 3rd
 No. of Common Pleas Court Judgeships: 10



2008 Jury Activity & Performance Measures		
A. Juror Days	5,668	
B. Number Sent to Voir Dire	3,992	
Voir Dire Attendance Rate $(B/A * 100)$		70.4%
C. Number of Voir Dires Started	78	
Juror Days Per Voir Dire Starts (A/C)		73
D. Number of Jurors Selected	1,017	
Juror Selection Rate $(D/B * 100)$		25.5%
E. Number of Jury Trials Started	70	
Juror Days Per Trial Starts (A/E)		81
Number of Voir Dires Not Resulting in Trial $(C-E)$		8
Percent Voir Dires Not Resulting in Trial $(C-E)/C * 100$		10.3%
F. Pool Days	90	
G. Zero Panel Days	19	
Percent Zero Panel Days $(G/F * 100)$		21.1%
H. Total Juror Fees Incurred	\$111,748	
Average Juror Fees Per Trial (H/E)		\$1,596

Average Juror Fees Per Trial, 1998-2008

