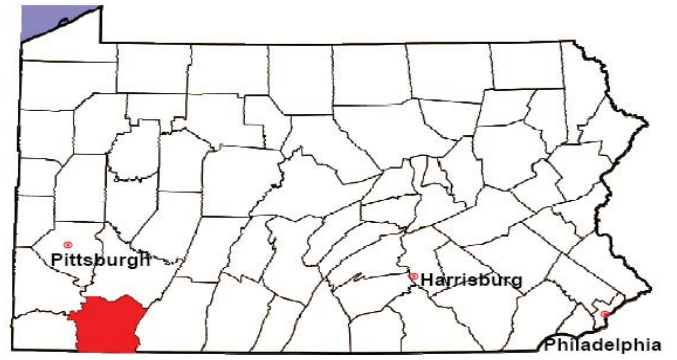


# FAYETTE COUNTY

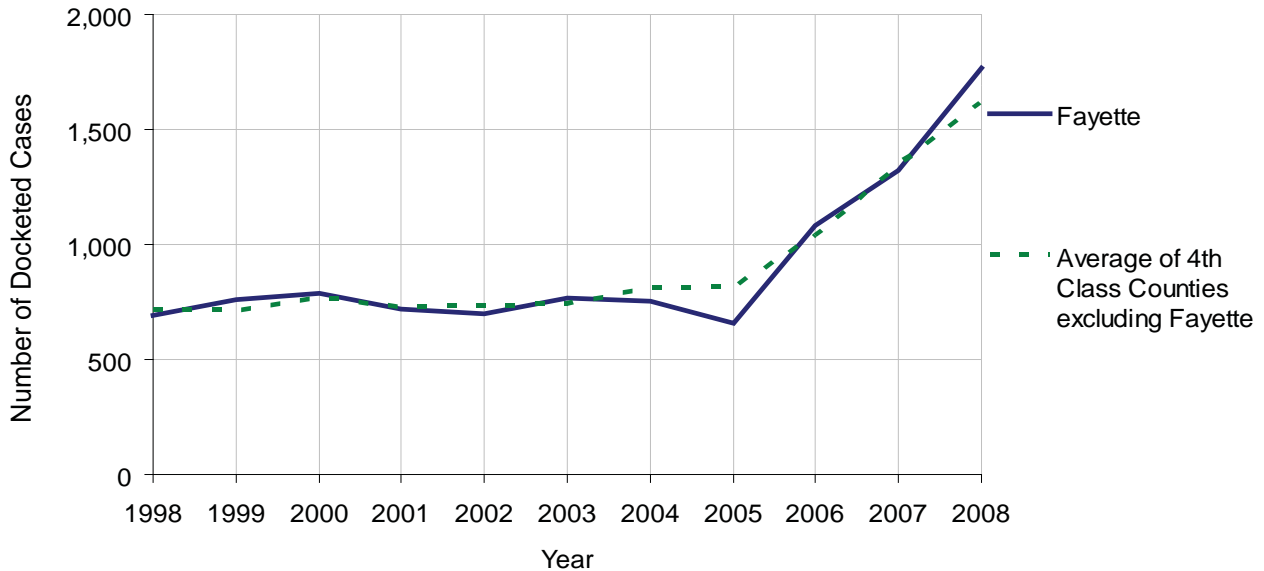
2008 Population Estimate: 143,925  
 Class of County: 4th  
 No. of Common Pleas Court Judgeships: 5



2008 Civil		Civil Action		
Docketed Cases		1,768		
Arbitrated Cases		71		
Trial-Ready Cases:		Civil Action	Other	Total
Cases Pending 1/1/08		50	9	59
Became Trial Ready in '08		28	1	29
Restored to Trial List		0	0	0
Appeals from Arbitration		5	1	6
<b>Cases Available for Trial</b>		<b>83</b>	<b>11</b>	<b>94</b>
Disposed By:				
Settlement		24	1	25
Non-Jury Trial		16	6	22
Jury Trial		5	0	5
Stricken from Trial List		11	2	13
Other		1	1	2
<b>Cases Disposed</b>		<b>57</b>	<b>10</b>	<b>67</b>
<b>Cases Pending 12/31/08</b>		<b>26</b>	<b>1</b>	<b>27</b>

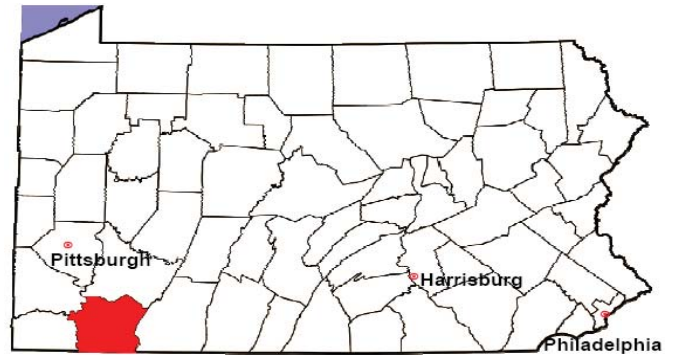
Age of Trial-Ready Cases as of 12/31/08 (Civil Action Only)		
0-6 months	10	38%
7-12 months	9	35%
13-18 months	1	4%
19-24 months	3	12%
25-30 months	2	8%
31-36 months	0	0%
Over 36 months	1	4%
<b>Total</b>	<b>26</b>	<b>100%</b>

Docketed Cases, 1998-2008



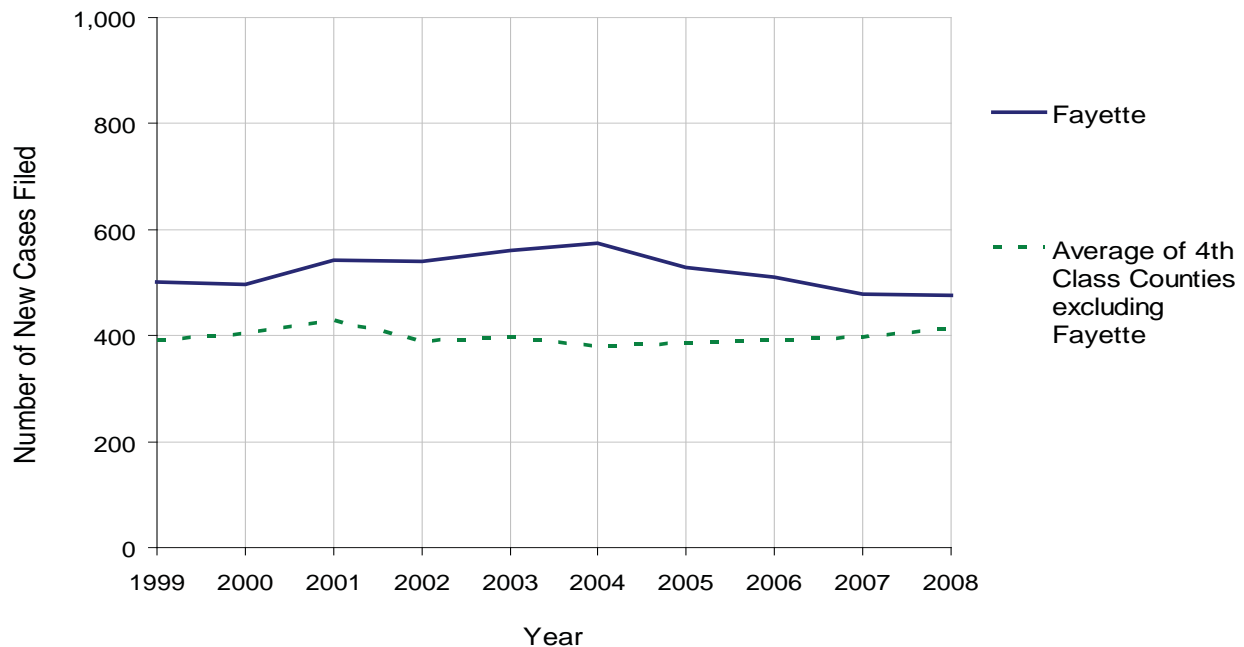
# FAYETTE COUNTY

2008 Population Estimate: 143,925  
 Class of County: 4th  
 No. of Common Pleas Court Judgeships: 5



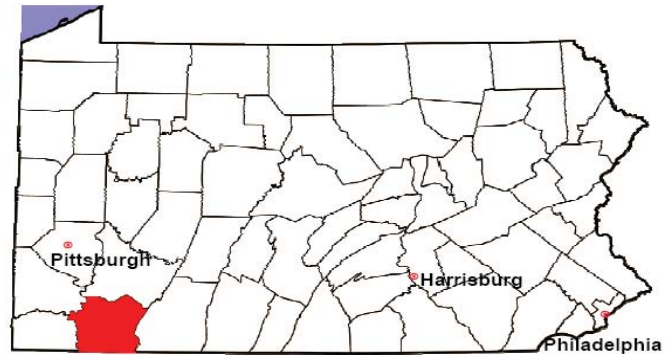
2008 Protection From Abuse	No. of Petitions	%
Cases Pending 1/1/08	6	
New Cases Filed in '08	475	
<b>Cases Available for Processing</b>	<b>481</b>	
Processed By:		
Final Order After Hearing	100	21.1%
Final Order by Stipulation or Agreement	135	28.5%
Dismissal	203	42.8%
Withdrawal	35	7.4%
Other	1	0.2%
<b>Cases Processed</b>	<b>474</b>	<b>100.0%</b>
<b>Cases Pending 12/31/08</b>	<b>7</b>	

PFA New Cases Filed, 1999-2008



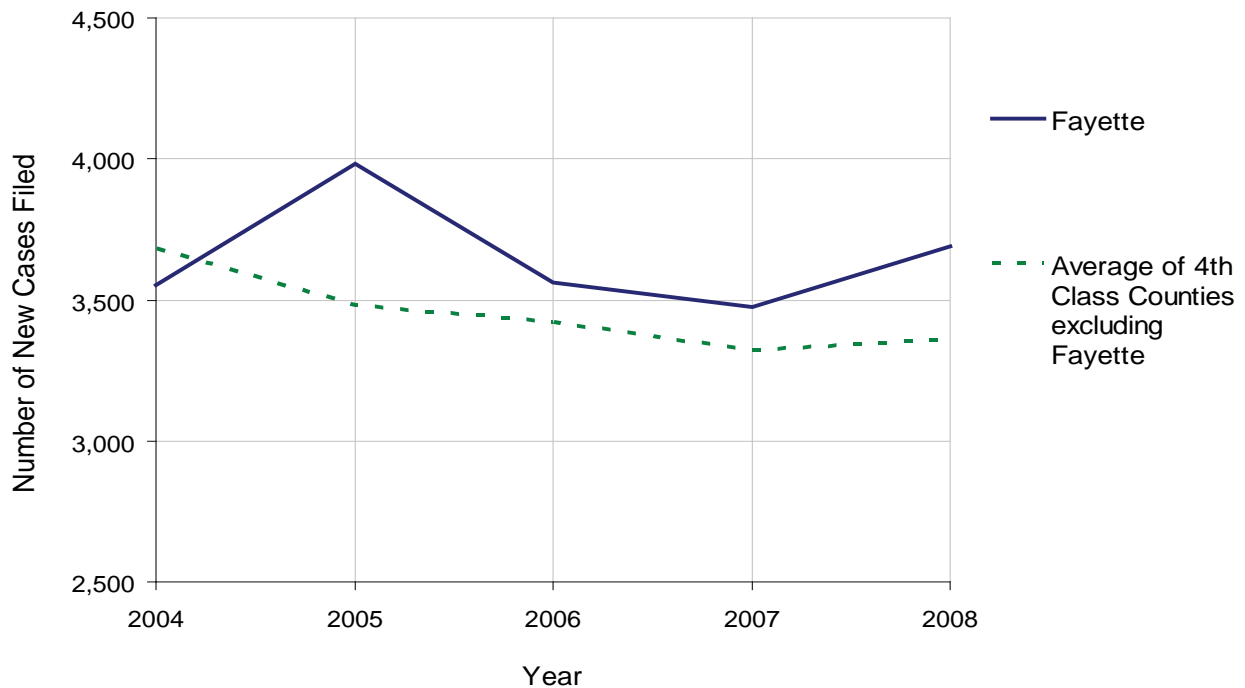
# FAYETTE COUNTY

2008 Population Estimate: 143,925  
 Class of County: 4th  
 No. of Common Pleas Court Judgeships: 5



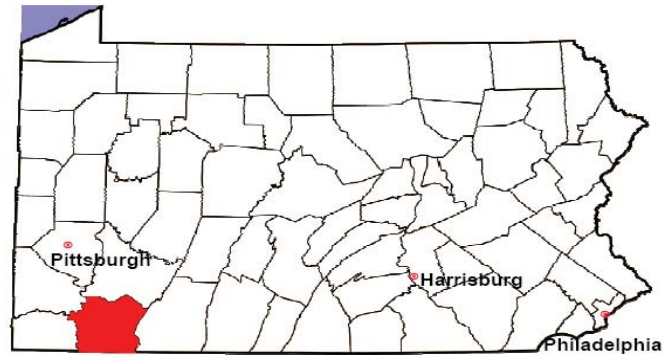
<b>2008 Spousal &amp; Child Support</b>	No. of Petitions	%
Cases Pending 1/1/08	385	
New Cases Filed in '08	3,688	
Dockets Transferred In (+)	21	
Dockets Transferred Out (-)	38	
<b>Cases Available for Processing</b>	<b>4,056</b>	
Processed By:		
Judge	79	2.2%
<b>Intake Officer</b>	<b>3,578</b>	<b>97.8%</b>
Hearing Officer	0	0.0%
<b>Other</b>	<b>0</b>	<b>0.0%</b>
<b>Cases Processed</b>	<b>3,657</b>	<b>100.0%</b>
<b>Cases Pending 12/31/08</b>	<b>399</b>	

Spousal & Child Support New Cases Filed, 1998-2008



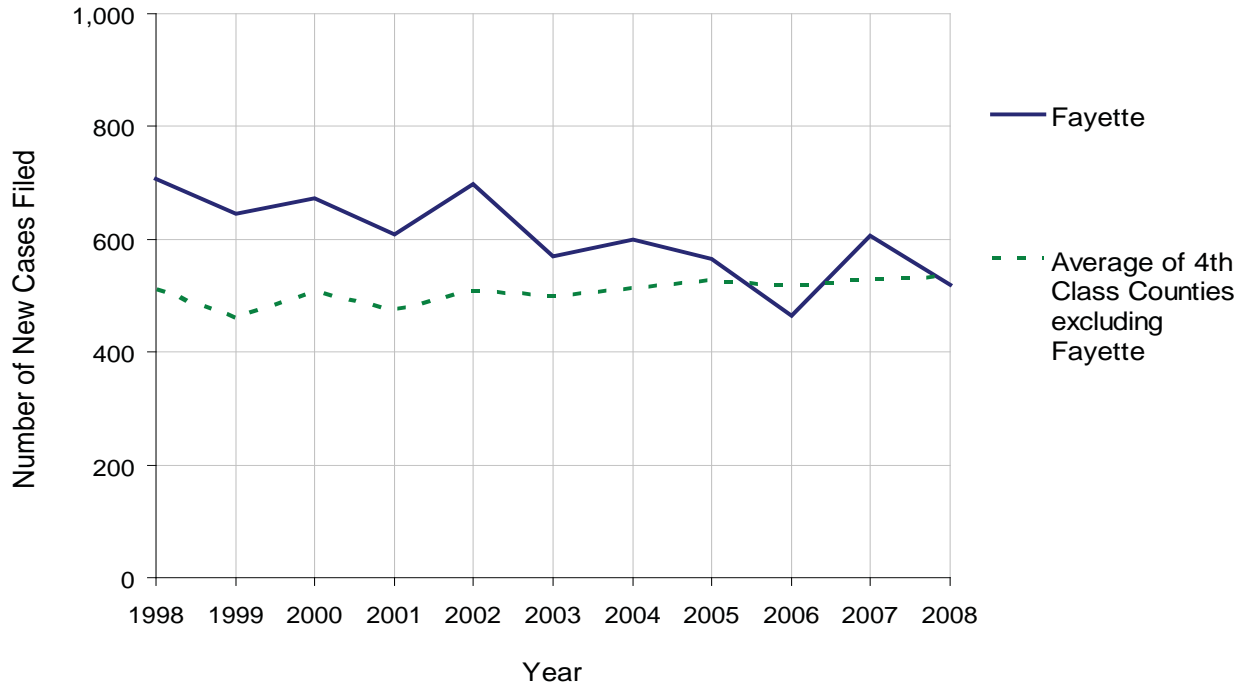
# FAYETTE COUNTY

2008 Population Estimate: 143,925  
 Class of County: 4th  
 No. of Common Pleas Court Judgeships: 5



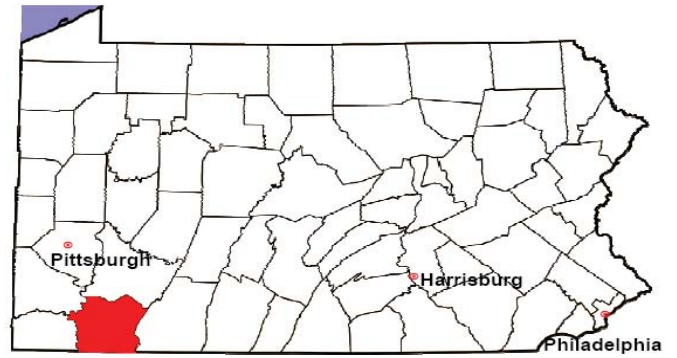
<b>2008 Custody/Partial Custody/Visitation</b>	No. of Petitions	%
Cases Pending 1/1/08	127	
New Cases Filed in '08	519	
<b>Cases Available for Processing</b>	<b>646</b>	
Processed By:		
Judge	25	4.1%
<b>Non-Judicial Officer</b>	<b>573</b>	<b>94.4%</b>
Other	9	1.5%
<b>Cases Processed</b>	<b>607</b>	<b>100.0%</b>
<b>Cases Pending 12/31/08</b>	<b>39</b>	

Custody/Partial Custody/Visitation New Cases Filed  
 1998-2008



# FAYETTE COUNTY

2008 Population Estimate: 143,925  
 Class of County: 4th  
 No. of Common Pleas Court Judgeships: 5



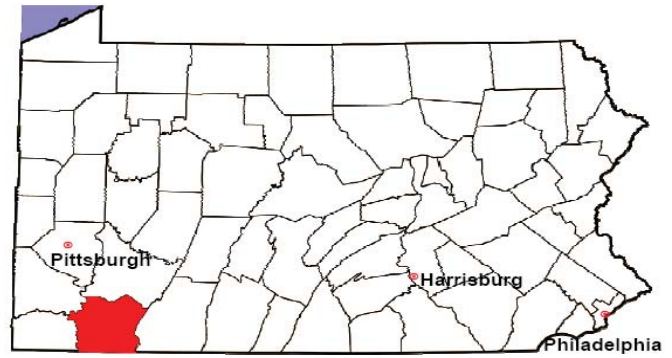
<b>2008 Divorce</b>	No. of Petitions	%
Cases Pending 1/1/08	1,485	
New Cases Filed in '08	485	
<b>Cases Available for Processing</b>	<b>1,970</b>	
Processed By:		
Contested Before a Judge	4	0.3%
Contested Before a Master	5	0.4%
Uncontested	345	27.5%
Other	900	71.8%
<b>Cases Processed</b>	<b>1,254</b>	<b>100.0%</b>
<b>Cases Pending 12/31/08</b>	<b>716</b>	

Divorce New Cases Filed, 1998-2008



# FAYETTE COUNTY

2008 Population Estimate: 143,925  
 Class of County: 4th  
 No. of Common Pleas Court Judgeships: 5



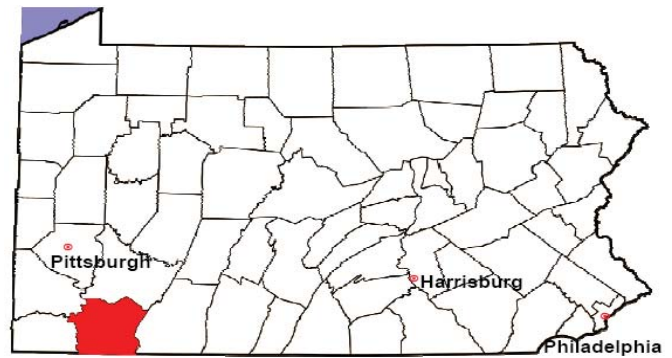
<b>2008 Juvenile Dependency Abuse/Neglect</b>	No. of Petitions	%
Cases Pending 1/1/08	3	
New Cases Filed in '08	104	
<b>Cases Available for Processing</b>	<b>107</b>	
Processed By:		
Judge	80	76.2%
Non-Judicial Officer	0	0.0%
Other	25	23.8%
<b>Cases Processed</b>	<b>105</b>	<b>100.0%</b>
<b>Cases Pending 12/31/08</b>	<b>2</b>	

Abuse/Neglect New Cases Filed, 2000-2008



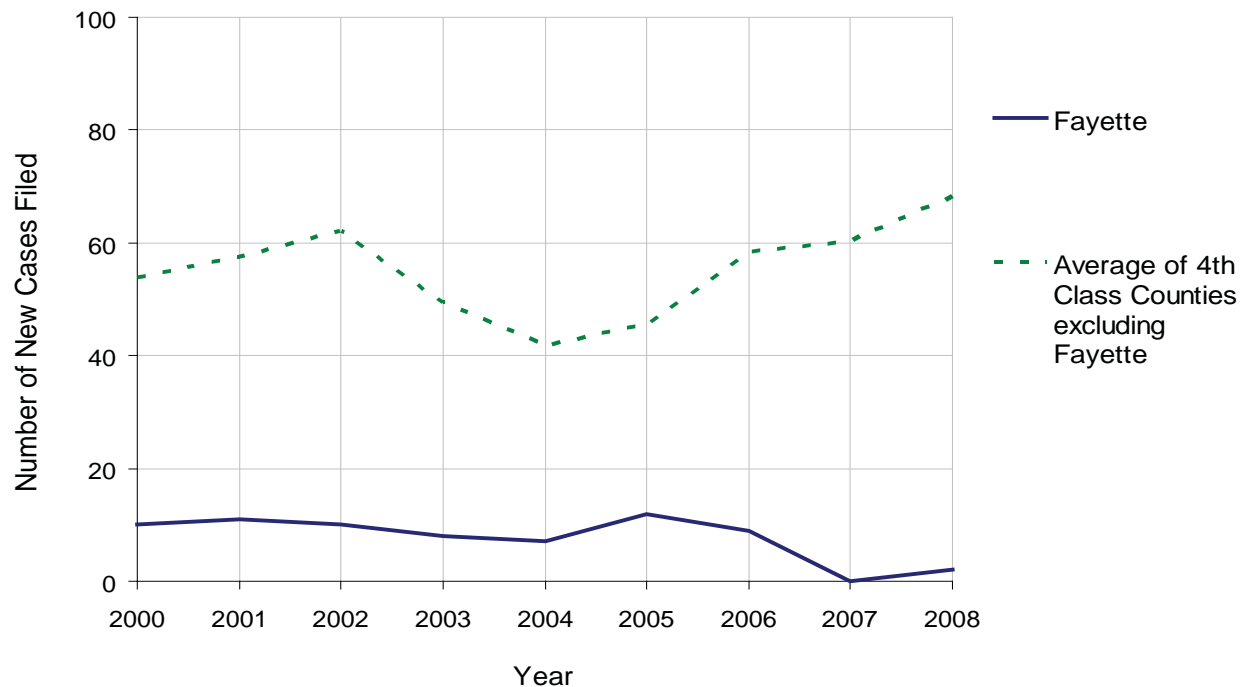
# FAYETTE COUNTY

2008 Population Estimate: 143,925  
 Class of County: 4th  
 No. of Common Pleas Court Judgeships: 5



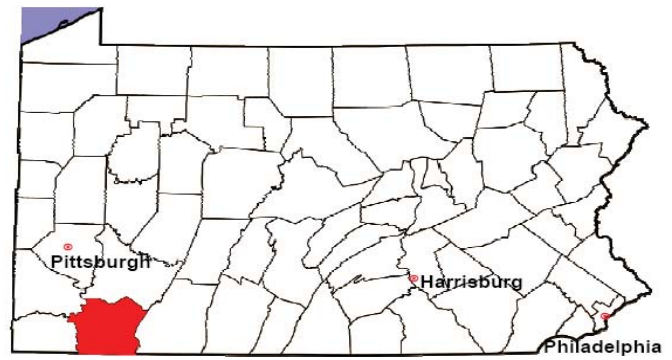
2008 Juvenile Dependency Status Offenses	No. of Petitions	%
Cases Pending 1/1/08	0	
New Cases Filed in '08	2	
<b>Cases Available for Processing</b>	<b>2</b>	
Processed By:		
Judge	1	50.0%
Non-Judicial Officer	0	0.0%
Other	1	50.0%
<b>Cases Processed</b>	<b>2</b>	<b>100.0%</b>
<b>Cases Pending 12/31/08</b>	<b>0</b>	

Status Offenses New Cases Filed, 2000-2008



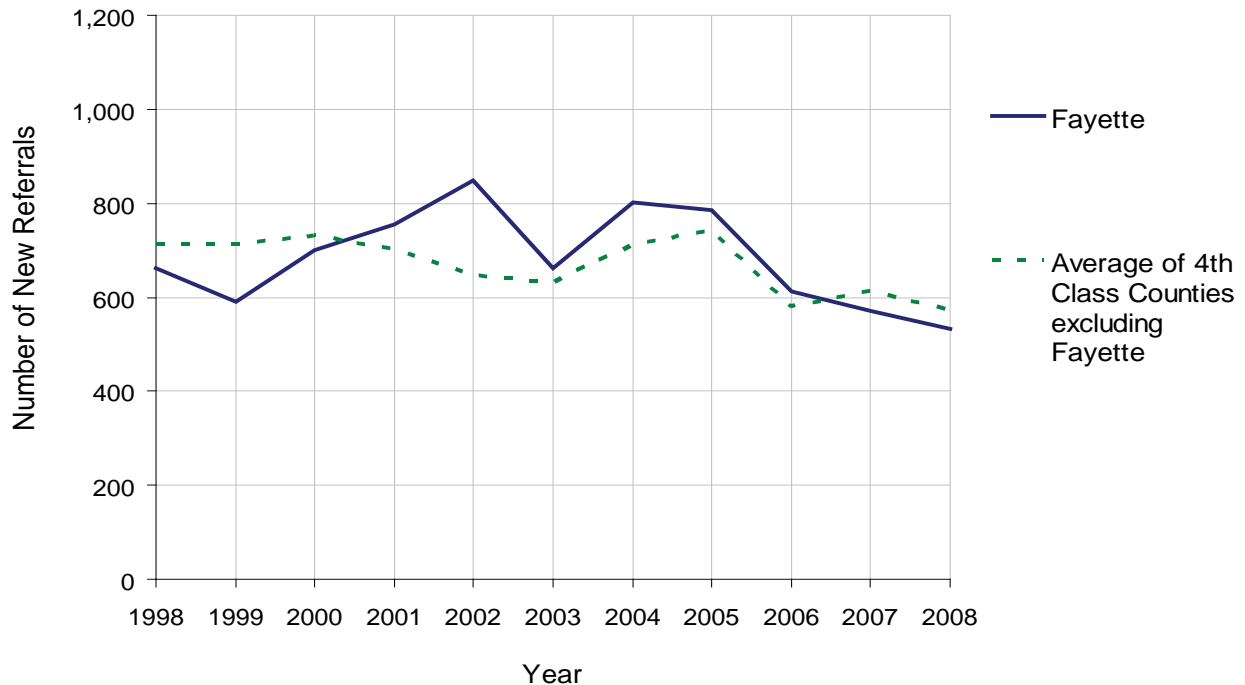
# FAYETTE COUNTY

2008 Population Estimate: 143,925  
 Class of County: 4th  
 No. of Common Pleas Court Judgeships: 5



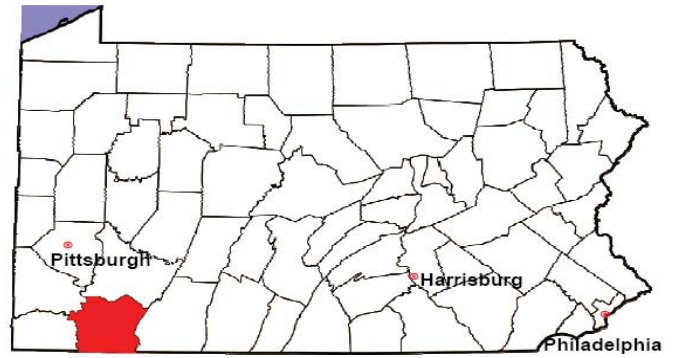
2008 Juvenile Delinquency	No. of Referrals	%
Cases Pending 1/1/08	63	
New Referrals in '08	532	
<b>Cases Available for Processing</b>	<b>595</b>	
Processed By:		
Judge	239	45.6%
Non-Judicial Officer	285	54.4%
Other	0	0.0%
<b>Cases Processed</b>	<b>524</b>	<b>100.0%</b>
<b>Cases Pending 12/31/08</b>	<b>71</b>	

Juvenile Delinquency New Referrals, 1998-2008



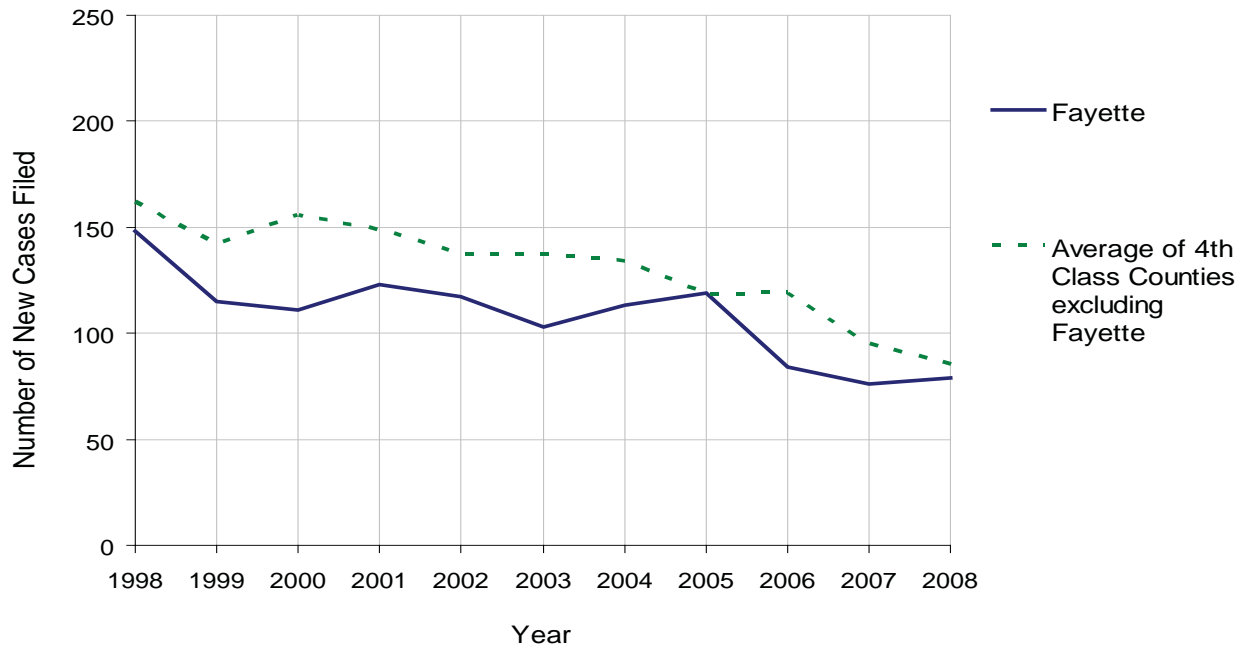
# FAYETTE COUNTY

2008 Population Estimate: 143,925  
 Class of County: 4th  
 No. of Common Pleas Court Judgeships: 5



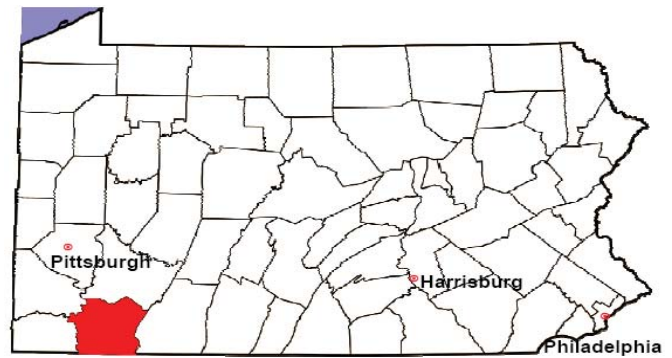
2008 Accounts	No. of Accounts	%
Cases Pending 1/1/08	4	
New Cases Filed in '08	79	
<b>Cases Available for Processing</b>	<b>83</b>	
Processed By:		
Contested before a Judge	5	6.0%
Contested before a Non-Judicial Officer	3	3.6%
Uncontested	73	88.0%
Other	2	2.4%
<b>Cases Processed</b>	<b>83</b>	<b>100.0%</b>
<b>Cases Pending 12/31/08</b>	<b>0</b>	

Accounts New Cases Filed, 1998-2008



# FAYETTE COUNTY

2008 Population Estimate: 143,925  
 Class of County: 4th  
 No. of Common Pleas Court Judgeships: 5

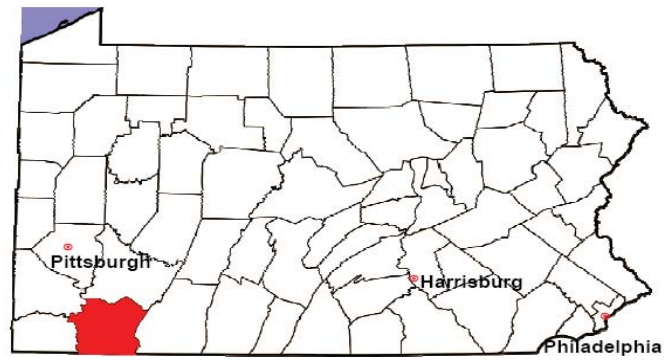


<b>2008 Adoptions</b>		No. of Cases	%
Cases Pending 1/1/08		3	
New Cases Filed in '08		64	
<b>Cases Available for Processing</b>		<b>67</b>	
Processed By:			
Contested before a Judge	Granted	1	1.6%
	Denied	0	0.0%
Uncontested	Granted	63	98.4%
	Denied	0	0.0%
Other		0	0.0%
<b>Cases Processed</b>		<b>64</b>	<b>100.0%</b>
<b>Cases Pending 12/31/08</b>		<b>3</b>	

Note: Prior to 2008, each petition was counted as one new case, regardless of the number of children listed on the petition. Starting in 2008, each child listed on a petition is counted as a separate case. Therefore, statistics for 2008 should not be compared with those for previous years.

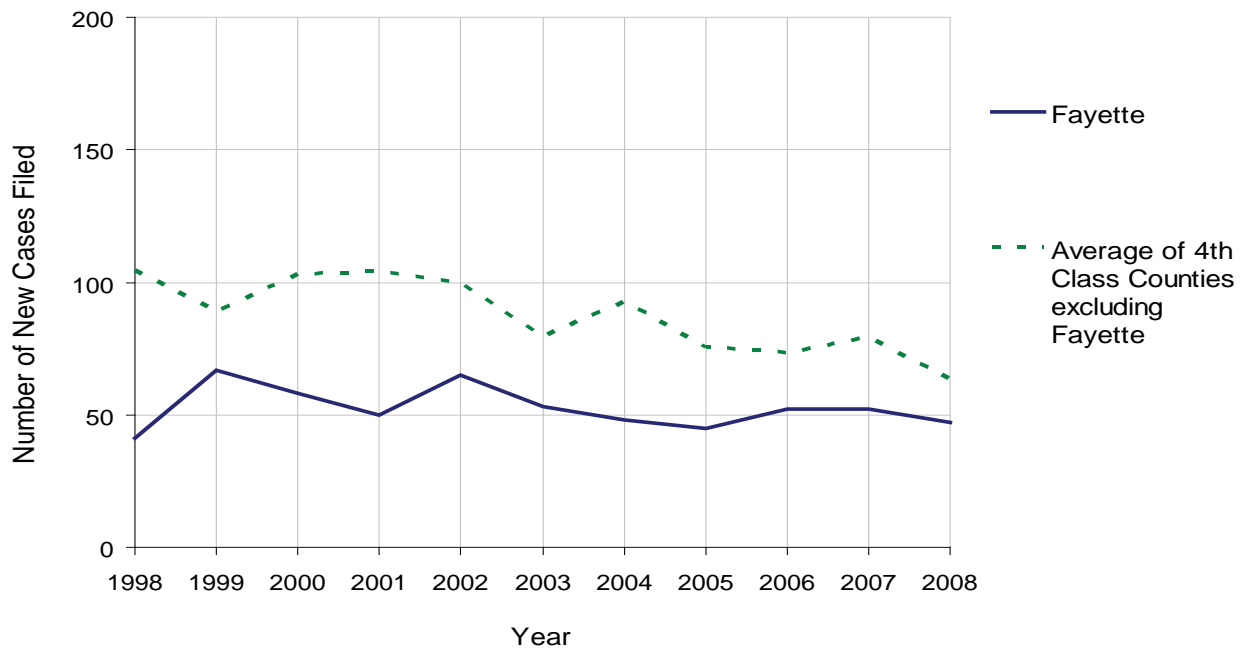
# FAYETTE COUNTY

2008 Population Estimate: 143,925  
 Class of County: 4th  
 No. of Common Pleas Court Judgeships: 5



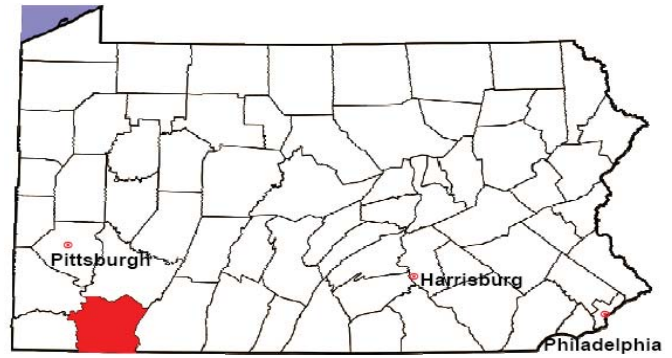
2008 Relinquishments/Terminations	No. of Petitions	%
Cases Pending 1/1/08	13	
New Cases Filed in '08	47	
<b>Cases Available for Processing</b>	<b>60</b>	
Processed By:		
Contested before a Judge	21	38.2%
Uncontested	34	61.8%
Other	0	0.0%
<b>Cases Processed</b>	<b>55</b>	<b>100.0%</b>
<b>Cases Pending 12/31/08</b>	<b>5</b>	

Relinquishments/Terminations New Cases Filed, 1998-2008



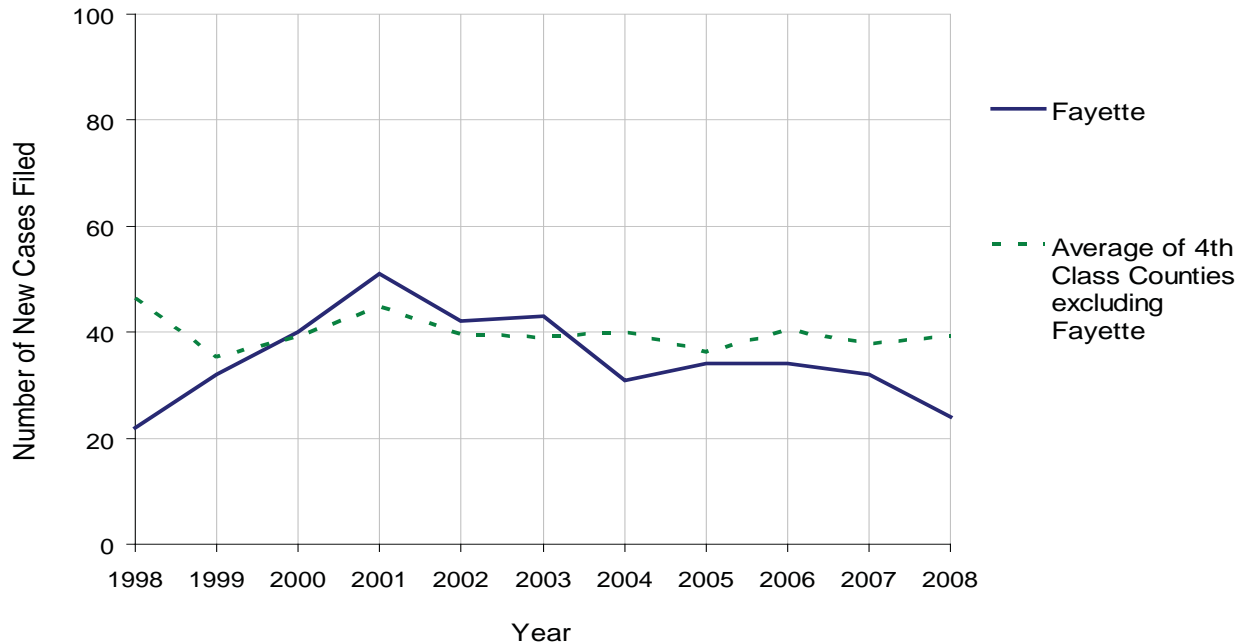
# FAYETTE COUNTY

2008 Population Estimate: 143,925  
 Class of County: 4th  
 No. of Common Pleas Court Judgeships: 5



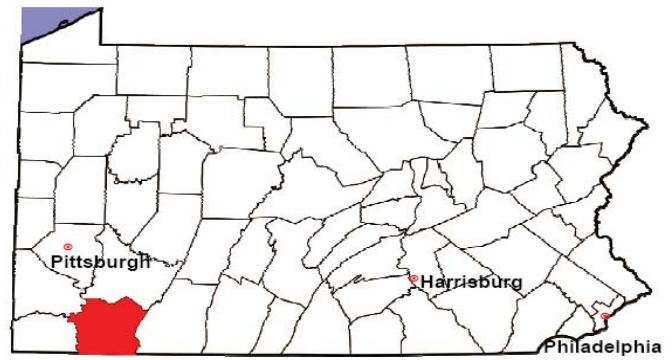
2008 Appointment of Guardians	No. of Petitions	%
Cases Pending 1/1/08	8	
New Cases Filed in '08	24	
<b>Cases Available for Processing</b>	<b>32</b>	
Processed By:		
Contested before a Judge	1	4.2%
Uncontested	22	91.7%
Other	1	4.2%
<b>Cases Processed</b>	<b>24</b>	<b>100.0%</b>
<b>Cases Pending 12/31/08</b>	<b>8</b>	

Appointment of Guardians New Cases Filed, 1998-2008



# FAYETTE COUNTY

2008 Population Estimate: 143,925  
 Class of County: 4th  
 No. of Common Pleas Court Judgeships: 5



2008 Jury Activity & Performance Measures		
A. Juror Days	6,604	
B. Number Sent to Voir Dire	5,551	
Voir Dire Attendance Rate $(B/A * 100)$		84.1%
C. Number of Voir Dires Started	153	
Juror Days Per Voir Dire Starts $(A/C)$		43
D. Number of Jurors Selected	2,121	
Juror Selection Rate $(D/B * 100)$		38.2%
E. Number of Jury Trials Started	148	
Juror Days Per Trial Starts $(A/E)$		45
Number of Voir Dires Not Resulting in Trial $(C-E)$		5
Percent Voir Dires Not Resulting in Trial $(C-E)/C * 100$		3.3%
F. Pool Days	51	
G. Zero Panel Days	1	
Percent Zero Panel Days $(G/F * 100)$		2.0%
H. Total Juror Fees Incurred	\$106,775	
Average Juror Fees Per Trial $(H/E)$		\$721

Average Juror Fees Per Trial, 1998-2008

