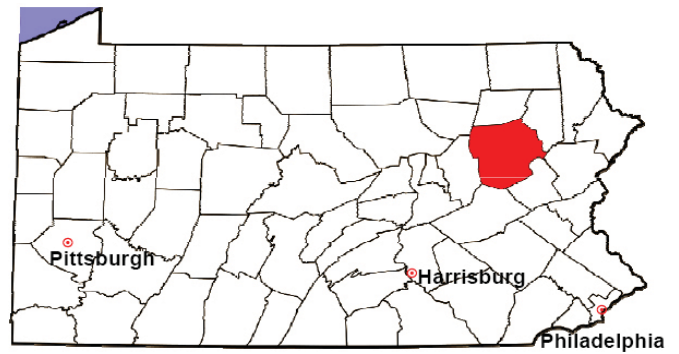


LUZERNE COUNTY

2008 Population Estimate: 311,983

Class of County: 3rd

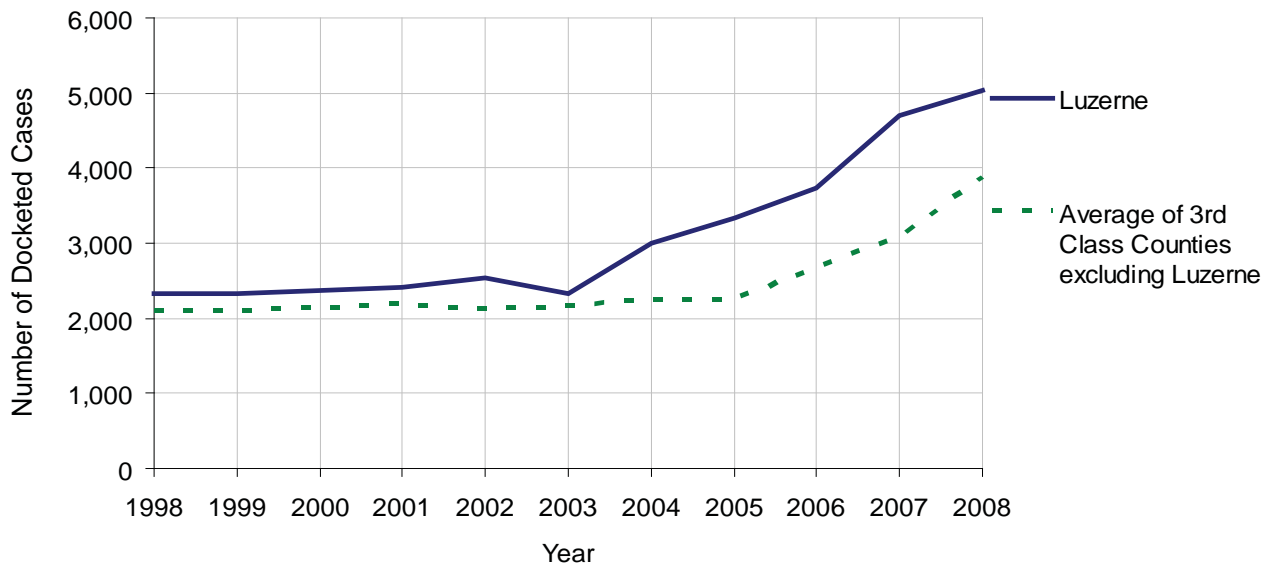
No. of Common Pleas Court Judgeships: 10



2008 Civil	Civil Action		
Docketed Cases	5,045		
Arbitrated Cases	147		
Trial-Ready Cases:	Civil Action	Other	Total
Cases Pending 1/1/08	319	12	331
Became Trial Ready in '08	303	15	318
Restored to Trial List	0	0	0
Appeals from Arbitration	2	0	2
Cases Available for Trial	624	27	651
Disposed By:			
Settlement	186	8	194
Non-Jury Trial	13	1	14
Jury Trial	27	0	27
Stricken from Trial List	15	0	15
Other	0	0	0
Cases Disposed	241	9	250
Cases Pending 12/31/08	383	18	401

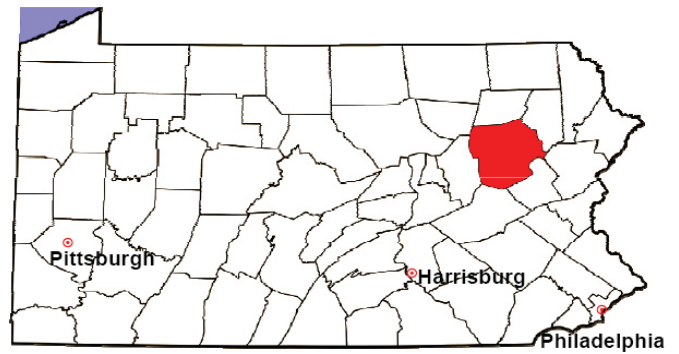
Age of Trial-Ready Cases as of 12/31/08 (Civil Action Only)		
0-6 months	110	29%
7-12 months	103	27%
13-18 months	59	15%
19-24 months	31	8%
25-30 months	16	4%
31-36 months	10	3%
Over 36 months	54	14%
Total	383	100%

Docketed Cases, 1998-2008



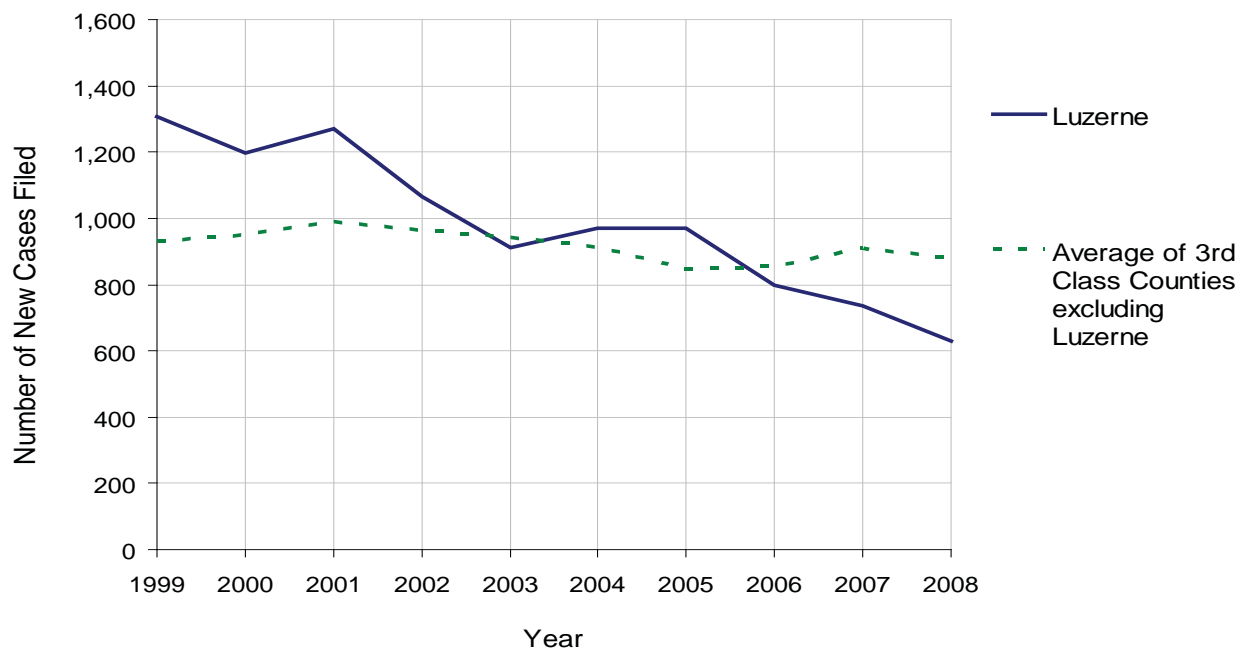
LUZERNE COUNTY

2008 Population Estimate: 311,983
 Class of County: 3rd
 No. of Common Pleas Court Judgeships: 10



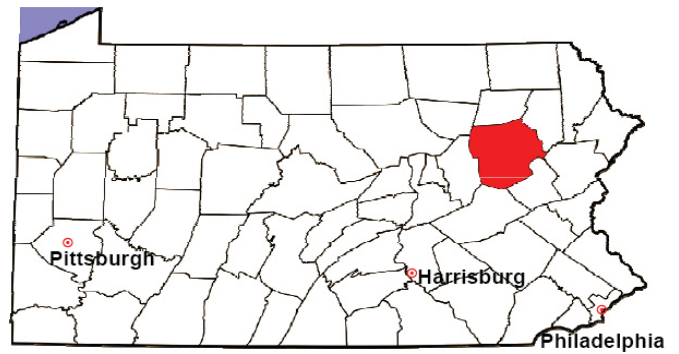
2008 Protection From Abuse	No. of Petitions	%
Cases Pending 1/1/08	28	
New Cases Filed in '08	631	
Cases Available for Processing	659	
Processed By:		
Final Order After Hearing	106	17.0%
Final Order by Stipulation or Agreement	308	49.3%
Dismissal	83	13.3%
Withdrawal	128	20.5%
Other	0	0.0%
Cases Processed	625	100.0%
Cases Pending 12/31/08	34	

PFA New Cases Filed, 1999-2008



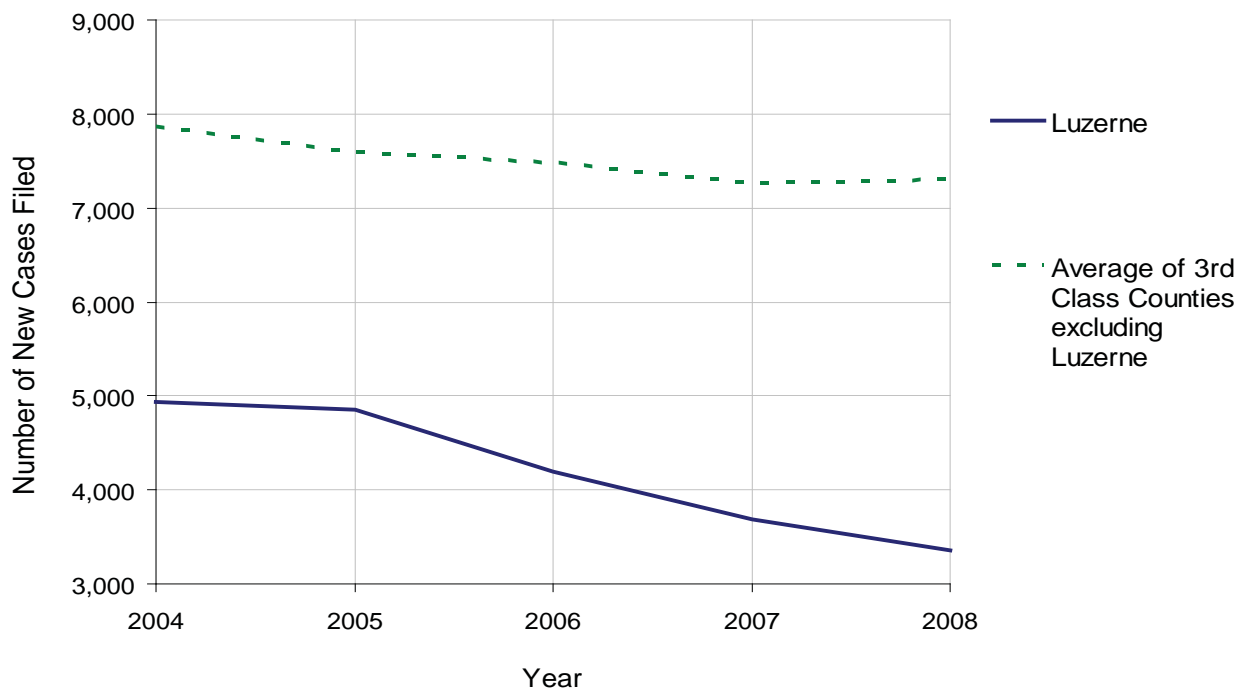
LUZERNE COUNTY

2008 Population Estimate: 311,983
 Class of County: 3rd
 No. of Common Pleas Court Judgeships: 10



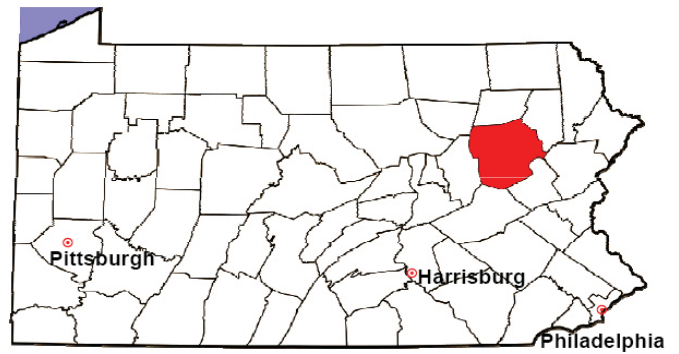
2008 Spousal & Child Support	No. of Petitions	%
Cases Pending 1/1/08	969	
New Cases Filed in '08	3,360	
Dockets Transferred In (+)	29	
Dockets Transferred Out (-)	31	
Cases Available for Processing	4,327	
Processed By:		
Judge	58	1.7%
Intake Officer	3,432	98.0%
Hearing Officer	10	0.3%
Other	2	0.1%
Cases Processed	3,502	100.0%
Cases Pending 12/31/08	825	

Spousal & Child Support New Cases Filed, 1998-2008



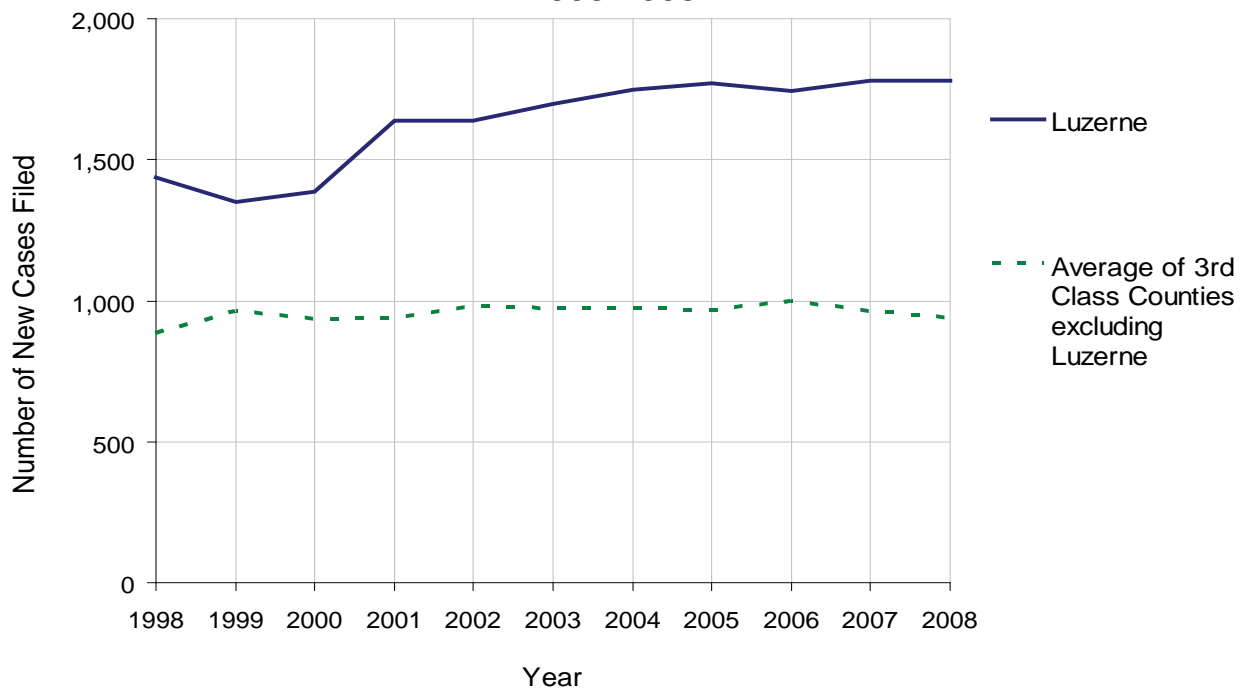
LUZERNE COUNTY

2008 Population Estimate: 311,983
 Class of County: 3rd
 No. of Common Pleas Court Judgeships: 10



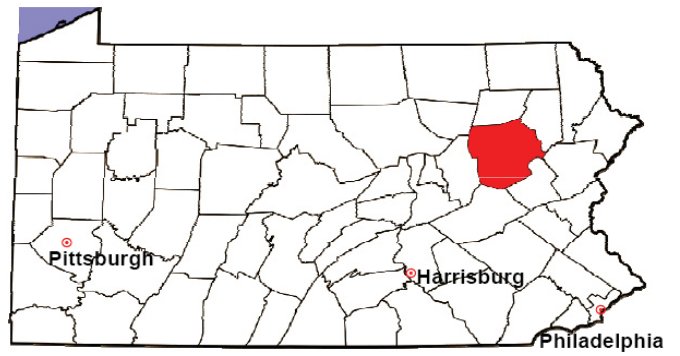
2008 Custody/Partial Custody/Visitation	No. of Petitions	%
Cases Pending 1/1/08	20	
New Cases Filed in '08	1,782	
Cases Available for Processing	1,802	
Processed By:		
Judge	161	9.0%
Non-Judicial Officer	1,627	91.0%
Other	0	0.0%
Cases Processed	1,788	100.0%
Cases Pending 12/31/08	14	

Custody/Partial Custody/Visitation New Cases Filed
 1998-2008



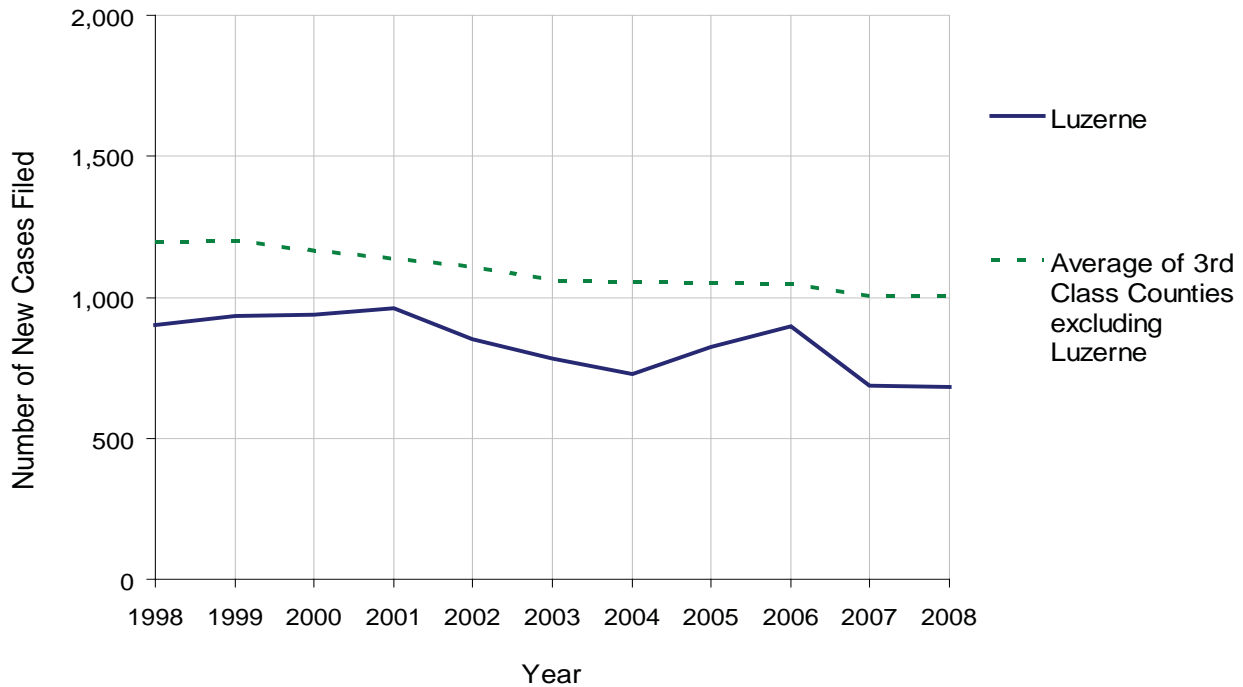
LUZERNE COUNTY

2008 Population Estimate: 311,983
 Class of County: 3rd
 No. of Common Pleas Court Judgeships: 10



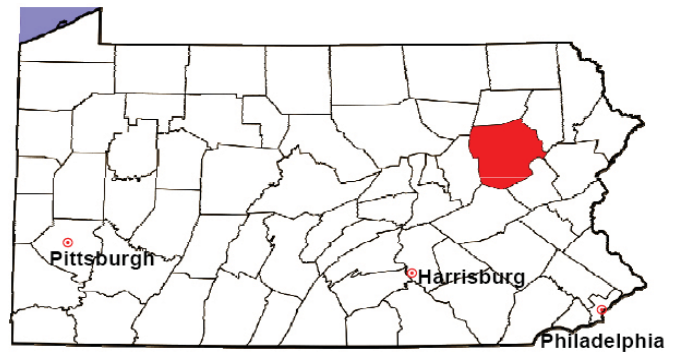
2008 Divorce	No. of Petitions	%
Cases Pending 1/1/08	311	
New Cases Filed in '08	680	
Cases Available for Processing	991	
Processed By:		
Contested Before a Judge	43	5.9%
Contested Before a Master	639	88.4%
Uncontested	6	0.8%
Other	35	4.8%
Cases Processed	723	100.0%
Cases Pending 12/31/08	268	

Divorce New Cases Filed, 1998-2008



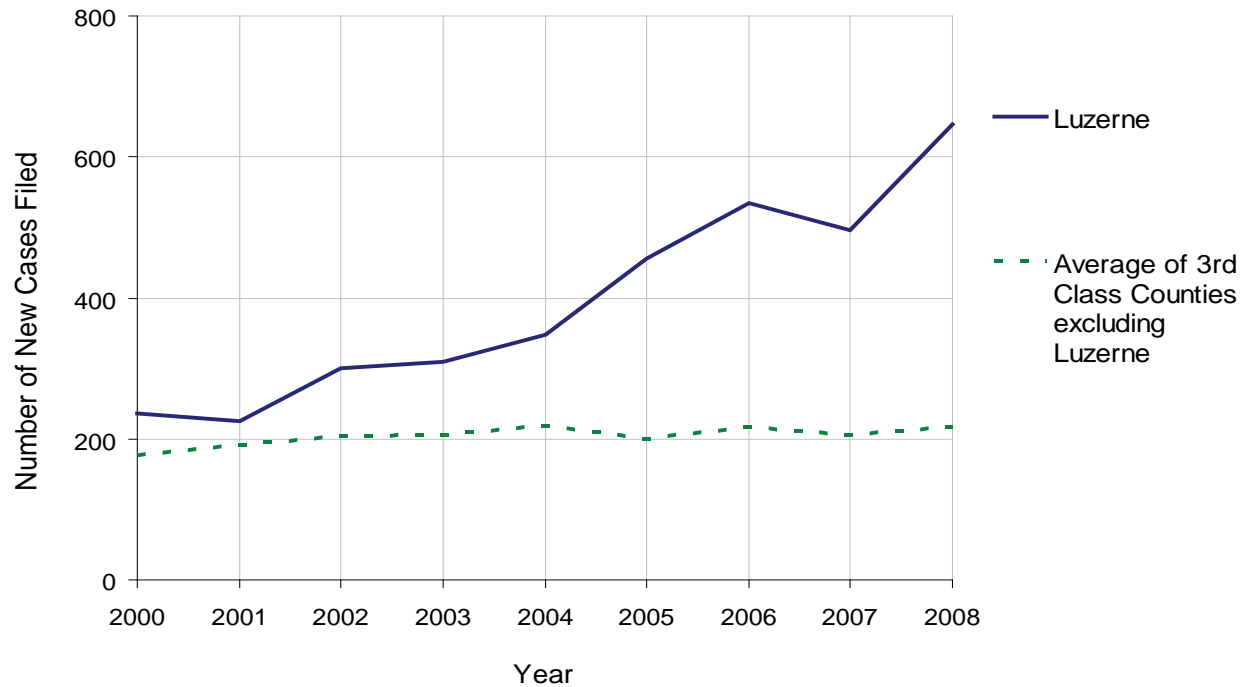
LUZERNE COUNTY

2008 Population Estimate: 311,983
 Class of County: 3rd
 No. of Common Pleas Court Judgeships: 10



2008 Juvenile Dependency Abuse/Neglect	No. of Petitions	%
Cases Pending 1/1/08	0	
New Cases Filed in '08	647	
Cases Available for Processing	647	
Processed By:		
Judge	647	100.0%
Non-Judicial Officer	0	0.0%
Other	0	0.0%
Cases Processed	647	100.0%
Cases Pending 12/31/08	0	

Abuse/Neglect New Cases Filed, 2000-2008

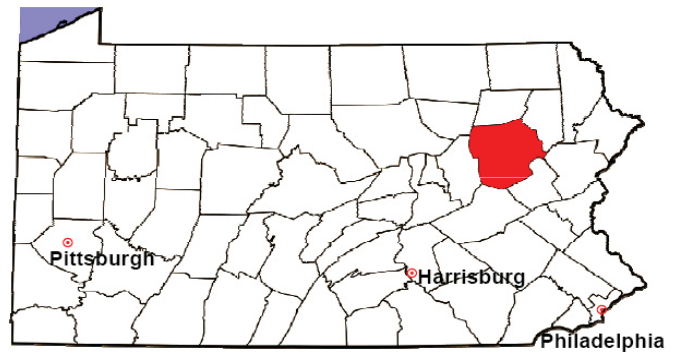


LUZERNE COUNTY

2008 Population Estimate: 311,983

Class of County: 3rd

No. of Common Pleas Court Judgeships: 10



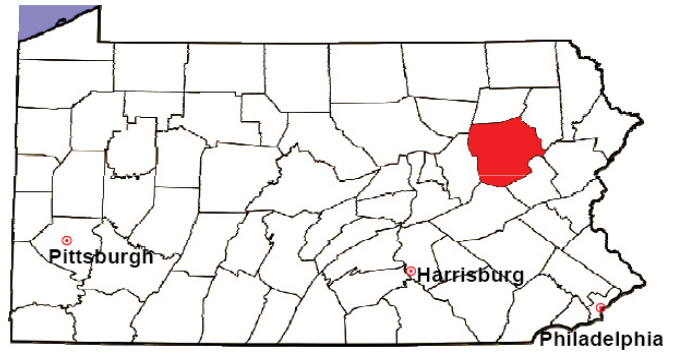
2008 Juvenile Dependency Status Offenses

Not Applicable:

In some counties, status offense petitions are not filed.

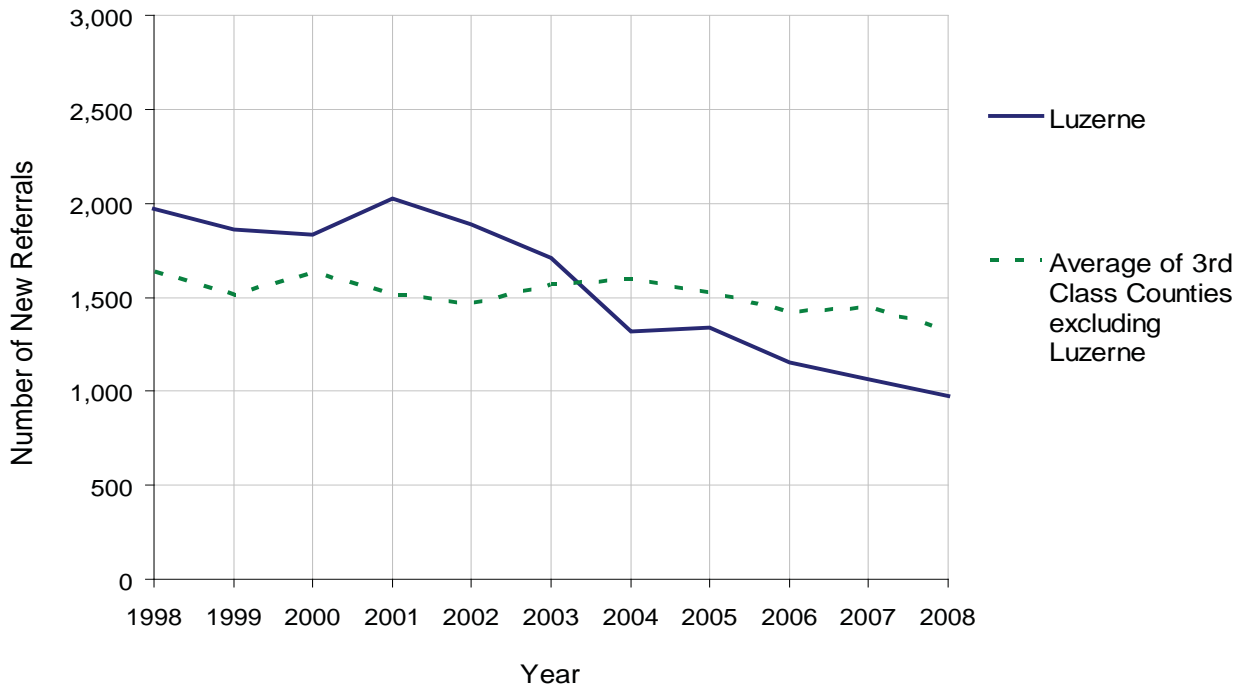
LUZERNE COUNTY

2008 Population Estimate: 311,983
 Class of County: 3rd
 No. of Common Pleas Court Judgeships: 10



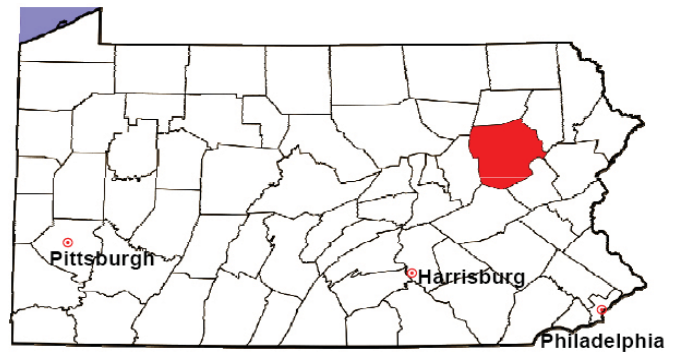
2008 Juvenile Delinquency	No. of Referrals	%
Cases Pending 1/1/08	69	
New Referrals in '08	975	
Cases Available for Processing	1,044	
Processed By:		
Judge	504	51.9%
Non-Judicial Officer	427	43.9%
Other	41	4.2%
Cases Processed	972	100.0%
Cases Pending 12/31/08	72	

Juvenile Delinquency New Referrals, 1998-2008



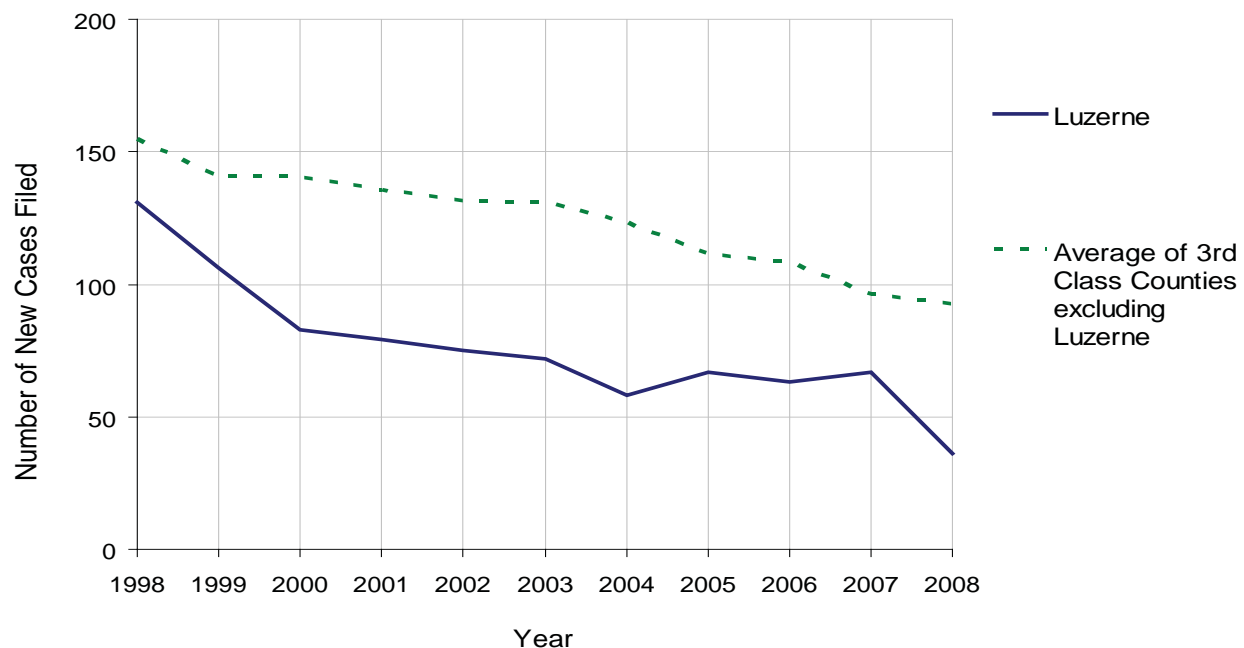
LUZERNE COUNTY

2008 Population Estimate: 311,983
 Class of County: 3rd
 No. of Common Pleas Court Judgeships: 10



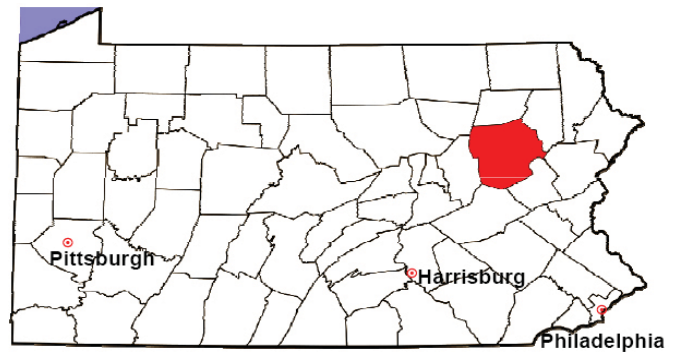
2008 Accounts	No. of Accounts	%
Cases Pending 1/1/08	0	
New Cases Filed in '08	36	
Cases Available for Processing	36	
Processed By:		
Contested before a Judge	6	17.6%
Contested before a Non-Judicial Officer	0	0.0%
Uncontested	28	82.4%
Other	0	0.0%
Cases Processed	34	100.0%
Cases Pending 12/31/08	2	

Accounts New Cases Filed, 1998-2008



LUZERNE COUNTY

2008 Population Estimate: 311,983
 Class of County: 3rd
 No. of Common Pleas Court Judgeships: 10

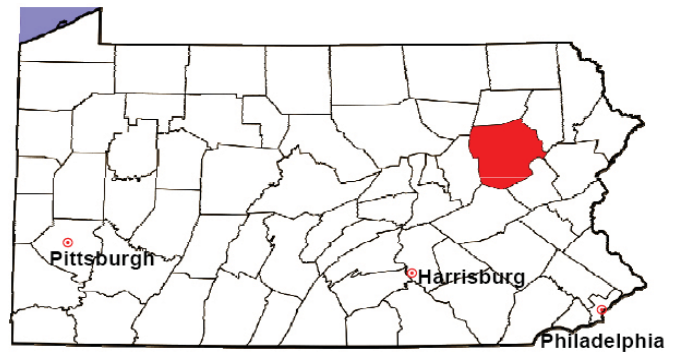


2008 Adoptions		No. of Cases	%
Cases Pending 1/1/08		8	
New Cases Filed in '08		122	
Cases Available for Processing		130	
Processed By:			
Contested before a Judge	Granted	14	11.1%
	Denied	0	0.0%
Uncontested	Granted	112	88.9%
	Denied	0	0.0%
Other		0	0.0%
Cases Processed		126	100.0%
Cases Pending 12/31/08		4	

Note: Prior to 2008, each petition was counted as one new case, regardless of the number of children listed on the petition. Starting in 2008, each child listed on a petition is counted as a separate case. Therefore, statistics for 2008 should not be compared with those for previous years.

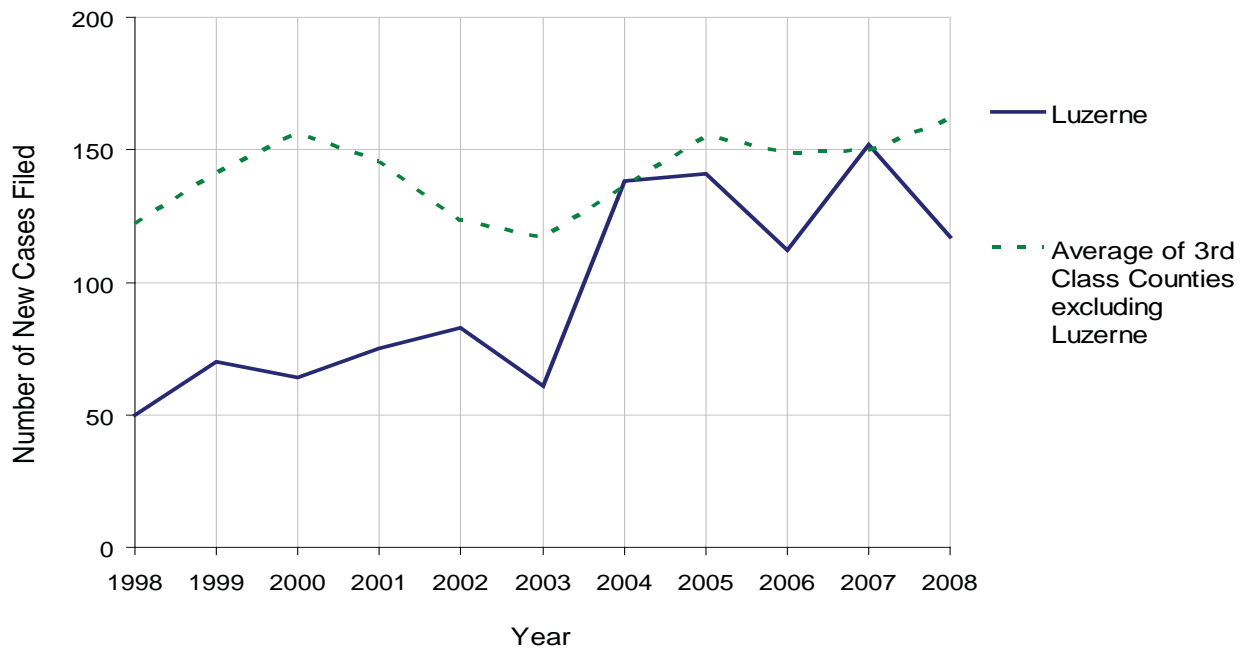
LUZERNE COUNTY

2008 Population Estimate: 311,983
 Class of County: 3rd
 No. of Common Pleas Court Judgeships: 10



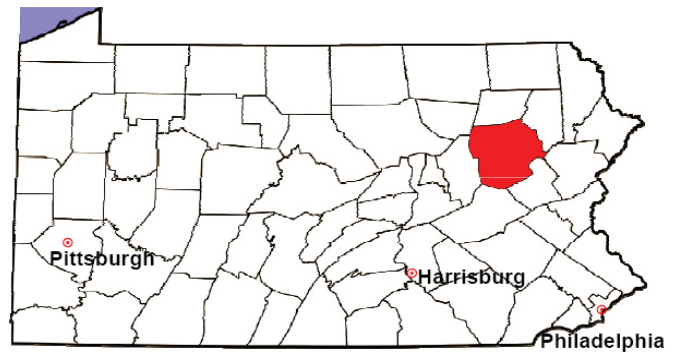
2008 Relinquishments/Terminations	No. of Petitions	%
Cases Pending 1/1/08	19	
New Cases Filed in '08	117	
Cases Available for Processing	136	
Processed By:		
Contested before a Judge	49	41.9%
Uncontested	68	58.1%
Other	0	0.0%
Cases Processed	117	100.0%
Cases Pending 12/31/08	19	

Relinquishments/Terminations New Cases Filed, 1998-2008



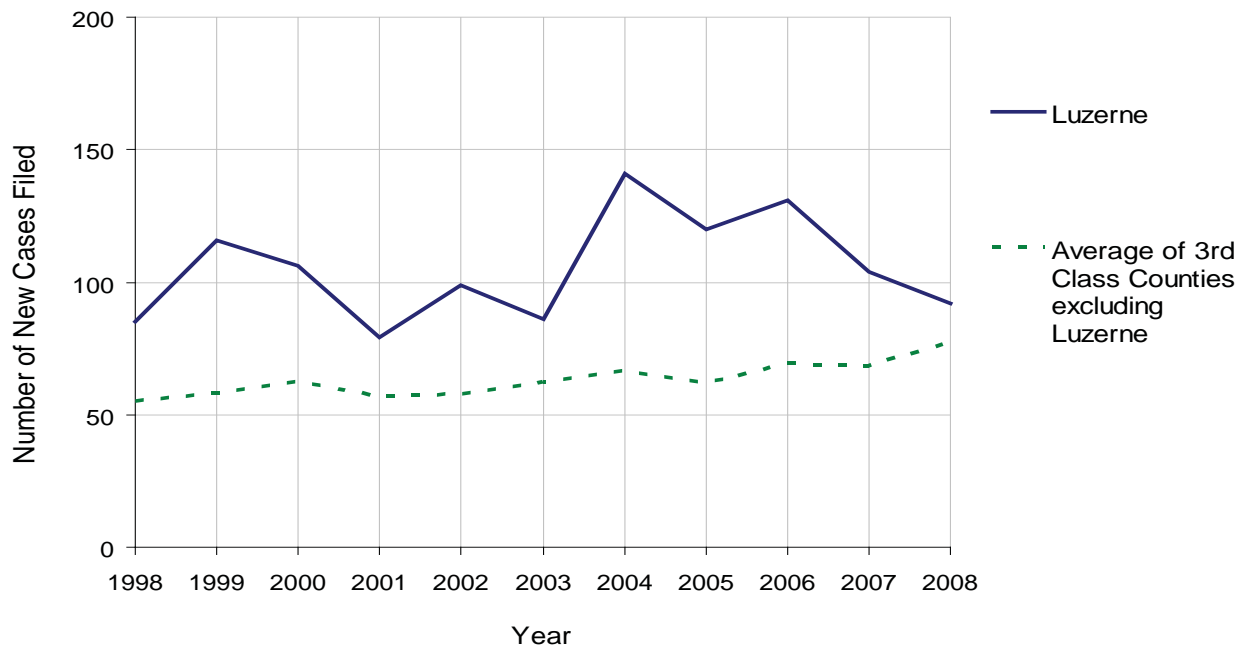
LUZERNE COUNTY

2008 Population Estimate: 311,983
 Class of County: 3rd
 No. of Common Pleas Court Judgeships: 10



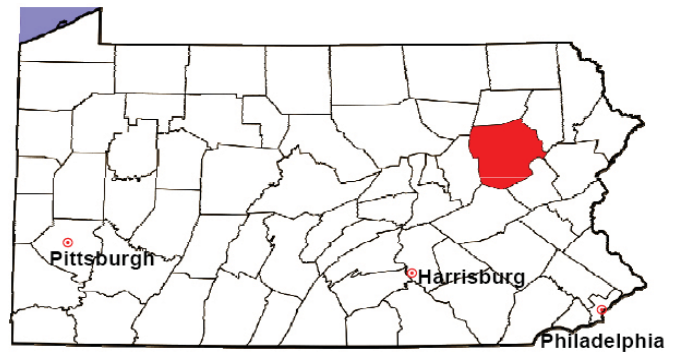
2008 Appointment of Guardians	No. of Petitions	%
Cases Pending 1/1/08	0	
New Cases Filed in '08	92	
Cases Available for Processing	92	
Processed By:		
Contested before a Judge	7	7.6%
Uncontested	85	92.4%
Other	0	0.0%
Cases Processed	92	100.0%
Cases Pending 12/31/08	0	

Appointment of Guardians New Cases Filed, 1998-2008



LUZERNE COUNTY

2008 Population Estimate: 311,983
 Class of County: 3rd
 No. of Common Pleas Court Judgeships: 10



2008 Jury Activity & Performance Measures		
A. Juror Days	10,143	
B. Number Sent to Voir Dire	4,340	
Voir Dire Attendance Rate $(B/A * 100)$		42.8%
C. Number of Voir Dires Started	108	
Juror Days Per Voir Dire Starts (A/C)		94
D. Number of Jurors Selected	1,432	
Juror Selection Rate $(D/B * 100)$		33.0%
E. Number of Jury Trials Started	91	
Juror Days Per Trial Starts (A/E)		111
Number of Voir Dires Not Resulting in Trial $(C-E)$		17
Percent Voir Dires Not Resulting in Trial $(C-E)/C * 100$		15.7%
F. Pool Days	101	
G. Zero Panel Days	41	
Percent Zero Panel Days $(G/F * 100)$		40.6%
H. Total Juror Fees Incurred	\$144,267	
Average Juror Fees Per Trial (H/E)		\$1,585

Average Juror Fees Per Trial, 1998-2008

