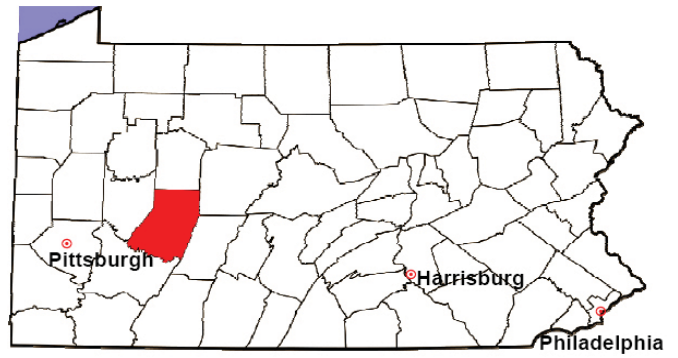


# INDIANA COUNTY

2008 Population Estimate: 87,479

Class of County: 6th

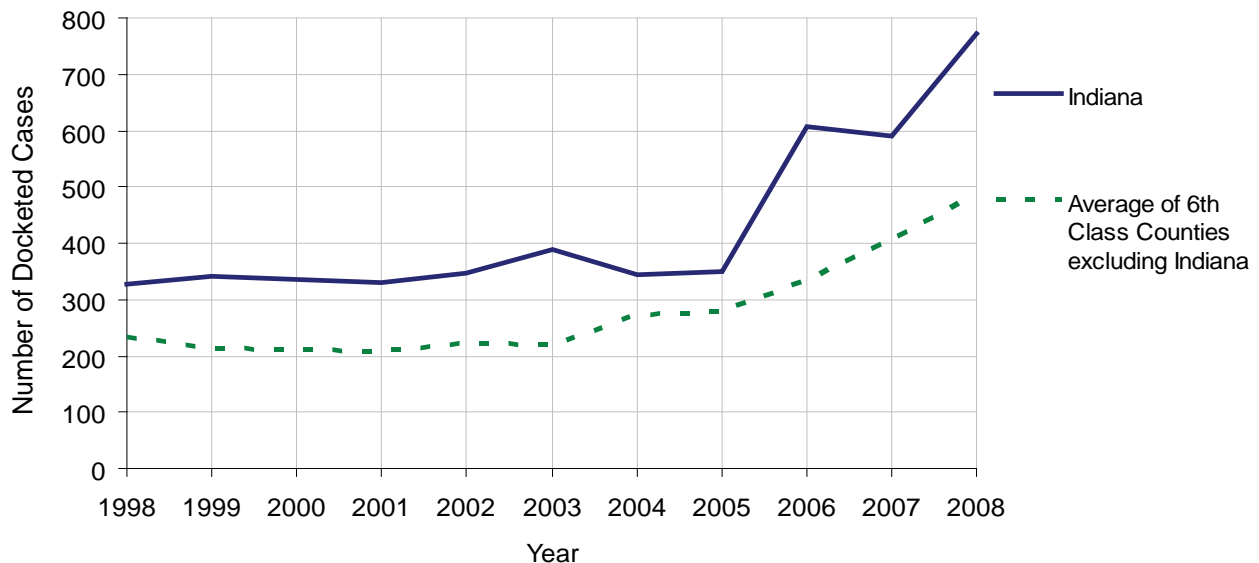
No. of Common Pleas Court Judgeships: 3



2008 Civil	Civil Action		
Docketed Cases	772		
Arbitrated Cases	26		
Trial-Ready Cases:	Civil Action	Other	Total
Cases Pending 1/1/08	26	615	641
Became Trial Ready in '08	37	213	250
Restored to Trial List	0	0	0
Appeals from Arbitration	12	0	12
<b>Cases Available for Trial</b>	<b>75</b>	<b>828</b>	<b>903</b>
Disposed By:			
Settlement	24	34	58
Non-Jury Trial	6	13	19
Jury Trial	6	3	9
Stricken from Trial List	9	17	26
Other	0	73	73
<b>Cases Disposed</b>	<b>45</b>	<b>140</b>	<b>185</b>
<b>Cases Pending 12/31/08</b>	<b>30</b>	<b>688</b>	<b>718</b>

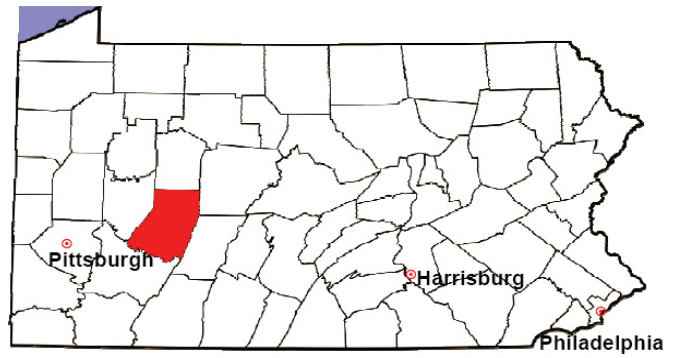
Age of Trial-Ready Cases as of 12/31/08 (Civil Action Only)		
0-6 months	25	83%
7-12 months	3	10%
13-18 months	1	3%
19-24 months	1	3%
25-30 months	0	0%
31-36 months	0	0%
Over 36 months	0	0%
<b>Total</b>	<b>30</b>	<b>100%</b>

Docketed Cases, 1998-2008



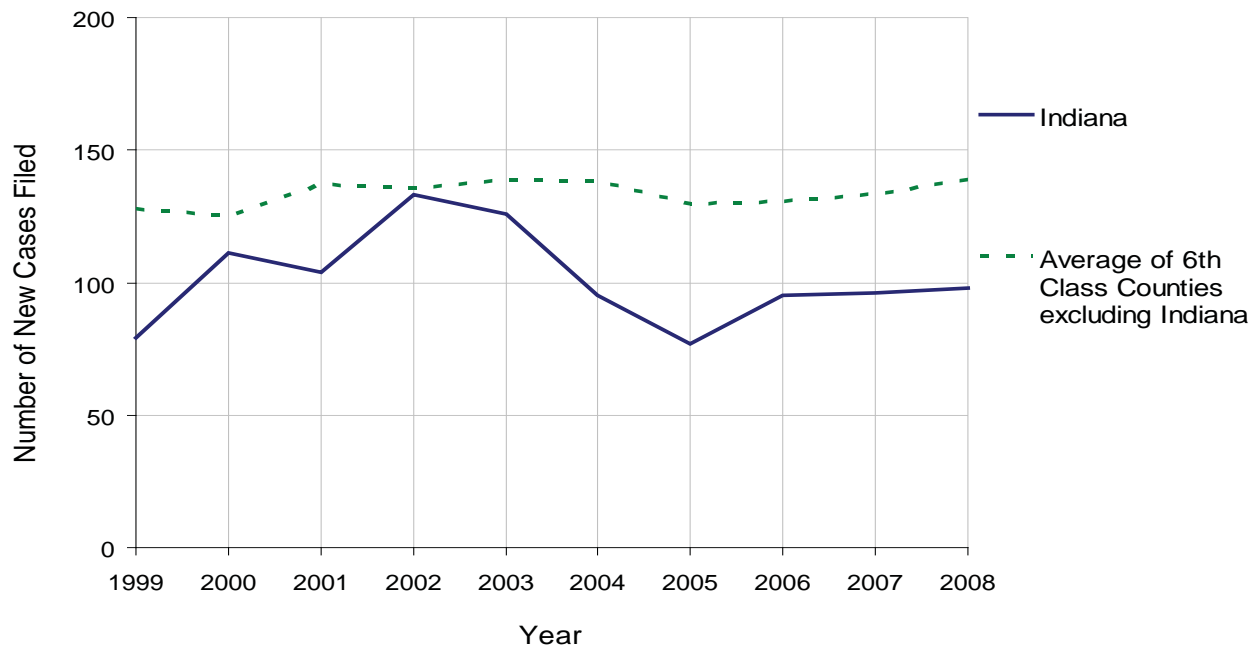
# INDIANA COUNTY

2008 Population Estimate: 87,479  
 Class of County: 6th  
 No. of Common Pleas Court Judgeships: 3



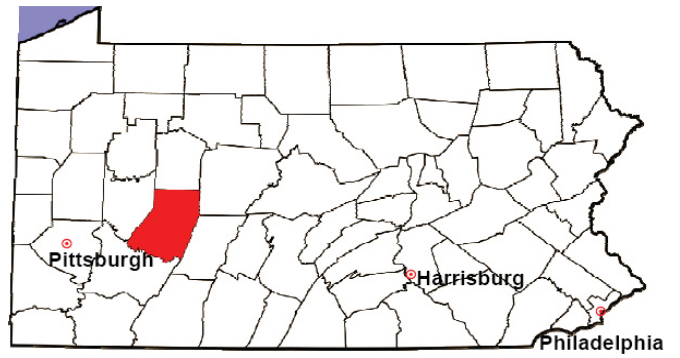
2008 Protection From Abuse	No. of Petitions	%
Cases Pending 1/1/08	17	
New Cases Filed in '08	98	
<b>Cases Available for Processing</b>	<b>115</b>	
Processed By:		
Final Order After Hearing	20	22.0%
Final Order by Stipulation or Agreement	34	37.4%
Dismissal	14	15.4%
Withdrawal	14	15.4%
Other	9	9.9%
<b>Cases Processed</b>	<b>91</b>	<b>100.0%</b>
<b>Cases Pending 12/31/08</b>	<b>24</b>	

PFA New Cases Filed, 1999-2008



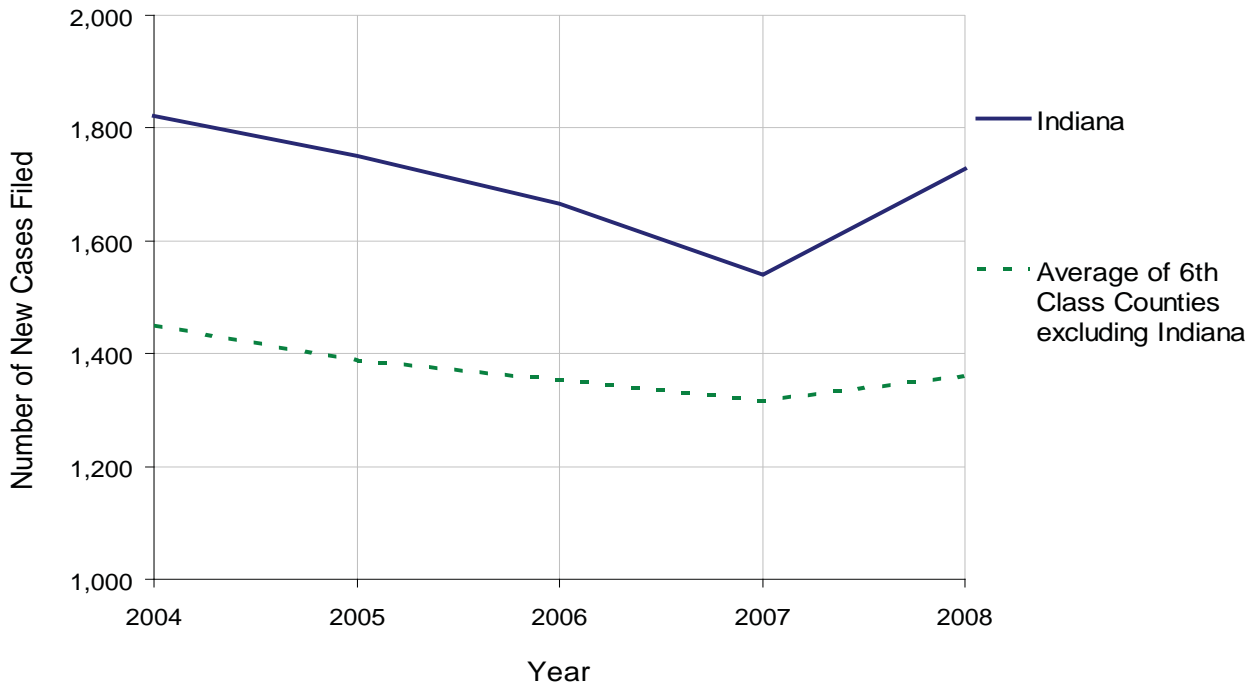
# INDIANA COUNTY

2008 Population Estimate: 87,479  
 Class of County: 6th  
 No. of Common Pleas Court Judgeships: 3



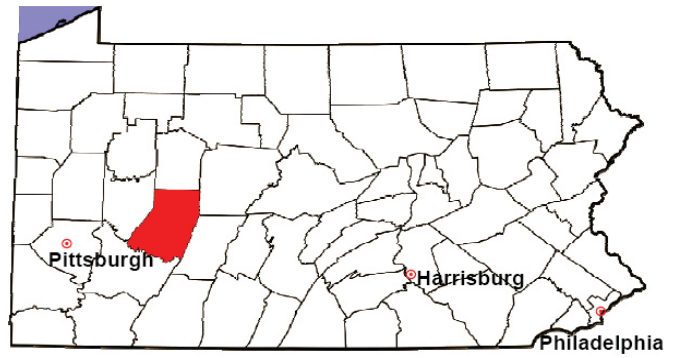
<b>2008 Spousal &amp; Child Support</b>	No. of Petitions	%
Cases Pending 1/1/08	191	
New Cases Filed in '08	1,727	
Dockets Transferred In (+)	11	
Dockets Transferred Out (-)	31	
<b>Cases Available for Processing</b>	<b>1,898</b>	
Processed By:		
Judge	10	0.6%
Intake Officer	1,686	96.1%
Hearing Officer	59	3.4%
Other	0	0.0%
<b>Cases Processed</b>	<b>1,755</b>	<b>100.0%</b>
<b>Cases Pending 12/31/08</b>	<b>143</b>	

Spousal & Child Support New Cases Filed, 1998-2008



# INDIANA COUNTY

2008 Population Estimate: 87,479  
 Class of County: 6th  
 No. of Common Pleas Court Judgeships: 3



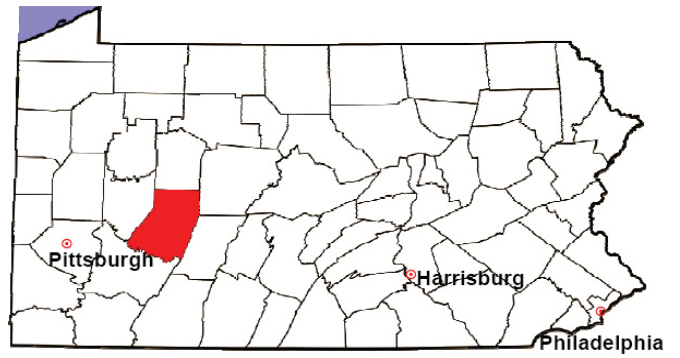
<b>2008 Custody/Partial Custody/Visitation</b>	No. of Petitions	%
Cases Pending 1/1/08	40	
New Cases Filed in '08	209	
<b>Cases Available for Processing</b>	<b>249</b>	
Processed By:		
Judge	60	28.7%
Non-Judicial Officer	61	29.2%
Other	88	42.1%
<b>Cases Processed</b>	<b>209</b>	<b>100.0%</b>
<b>Cases Pending 12/31/08</b>	<b>40</b>	

Custody/Partial Custody/Visitation New Cases Filed  
 1998-2008



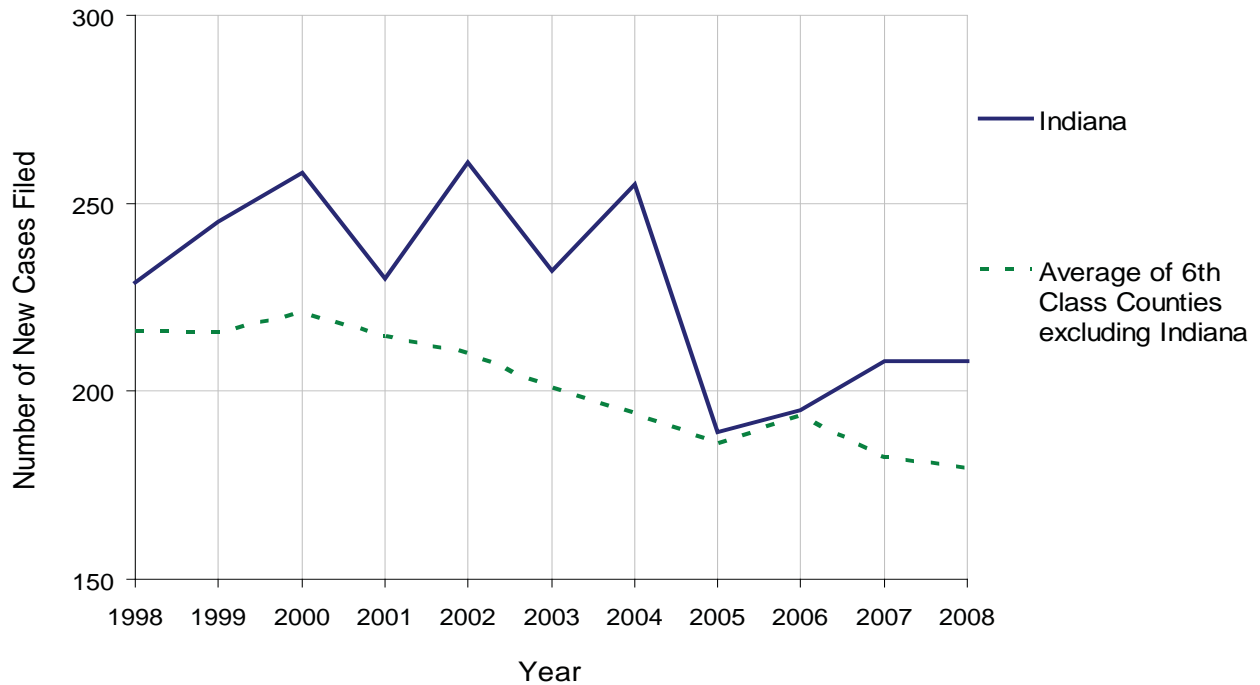
# INDIANA COUNTY

2008 Population Estimate: 87,479  
 Class of County: 6th  
 No. of Common Pleas Court Judgeships: 3



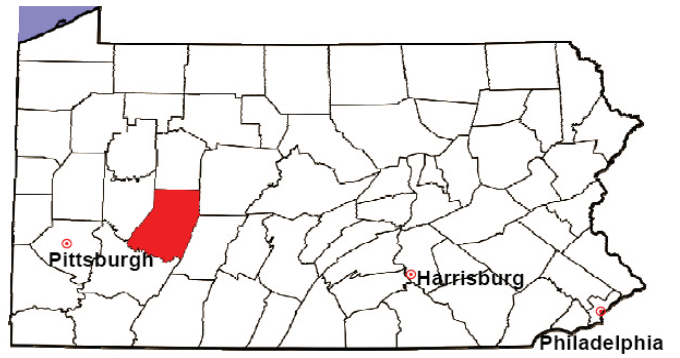
<b>2008 Divorce</b>	No. of Petitions	%
Cases Pending 1/1/08	255	
New Cases Filed in '08	208	
<b>Cases Available for Processing</b>	<b>463</b>	
Processed By:		
Contested Before a Judge	0	0.0%
Contested Before a Master	2	1.0%
Uncontested	166	81.8%
Other	35	17.2%
<b>Cases Processed</b>	<b>203</b>	<b>100.0%</b>
<b>Cases Pending 12/31/08</b>	<b>260</b>	

Divorce New Cases Filed, 1998-2008



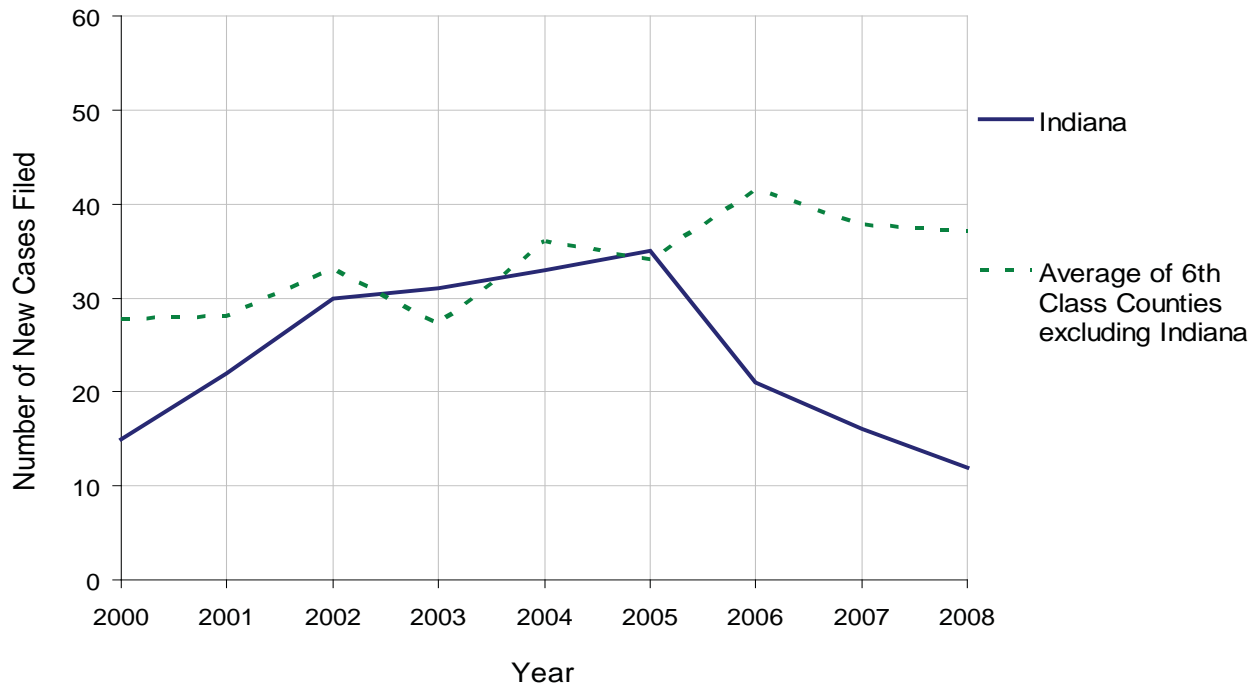
# INDIANA COUNTY

2008 Population Estimate: 87,479  
 Class of County: 6th  
 No. of Common Pleas Court Judgeships: 3



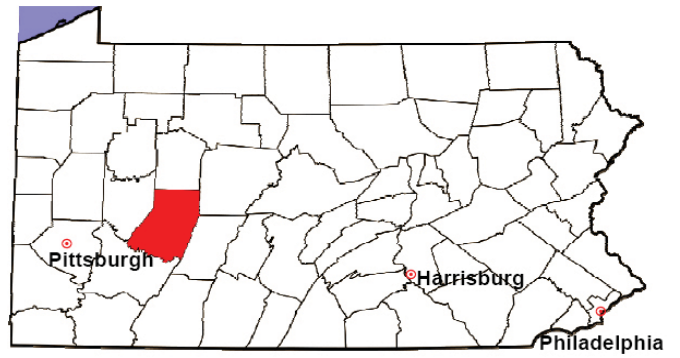
2008 Juvenile Dependency Abuse/Neglect	No. of Petitions	%
Cases Pending 1/1/08	1	
New Cases Filed in '08	12	
<b>Cases Available for Processing</b>	<b>13</b>	
Processed By:		
Judge	9	90.0%
Non-Judicial Officer	0	0.0%
Other	1	10.0%
<b>Cases Processed</b>	<b>10</b>	<b>100.0%</b>
<b>Cases Pending 12/31/08</b>	<b>3</b>	

Abuse/Neglect New Cases Filed, 2000-2008



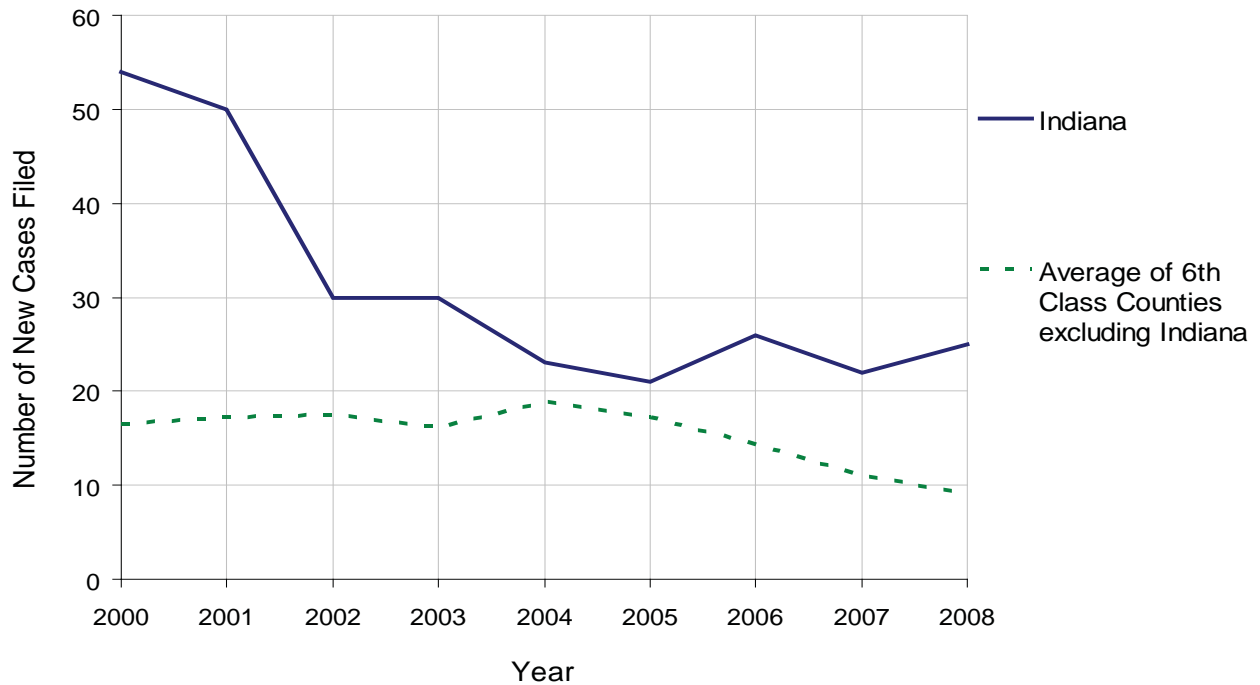
# INDIANA COUNTY

2008 Population Estimate: 87,479  
 Class of County: 6th  
 No. of Common Pleas Court Judgeships: 3



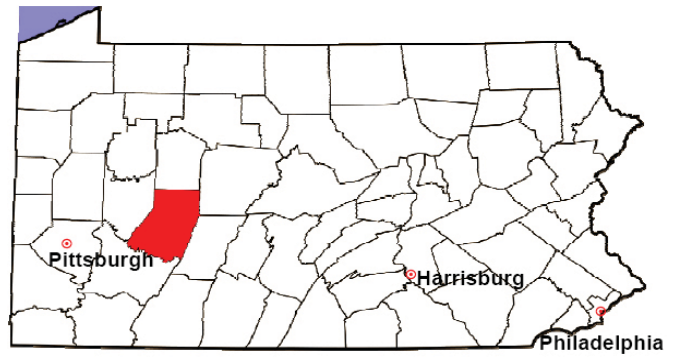
2008 Juvenile Dependency Status Offenses	No. of Petitions	%
Cases Pending 1/1/08	0	
New Cases Filed in '08	25	
<b>Cases Available for Processing</b>	<b>25</b>	
Processed By:		
Judge	22	100.0%
Non-Judicial Officer	0	0.0%
Other	0	0.0%
<b>Cases Processed</b>	<b>22</b>	<b>100.0%</b>
<b>Cases Pending 12/31/08</b>	<b>3</b>	

Status Offenses New Cases Filed, 2000-2008



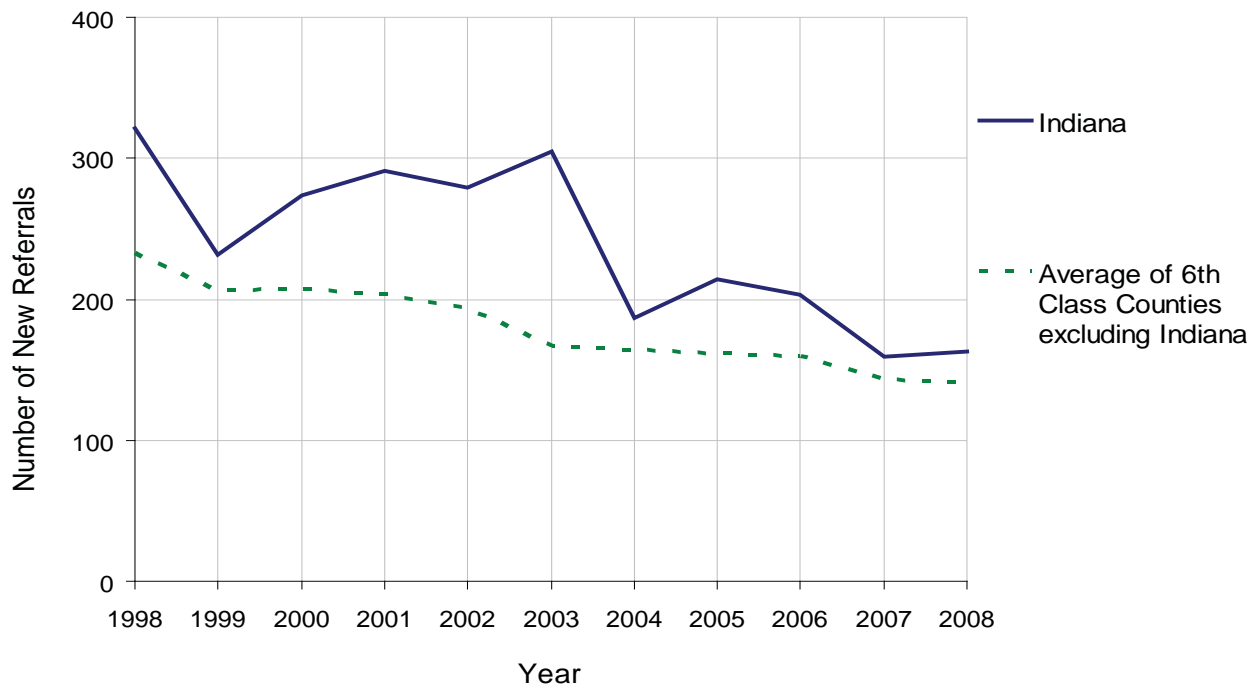
# INDIANA COUNTY

2008 Population Estimate: 87,479  
 Class of County: 6th  
 No. of Common Pleas Court Judgeships: 3



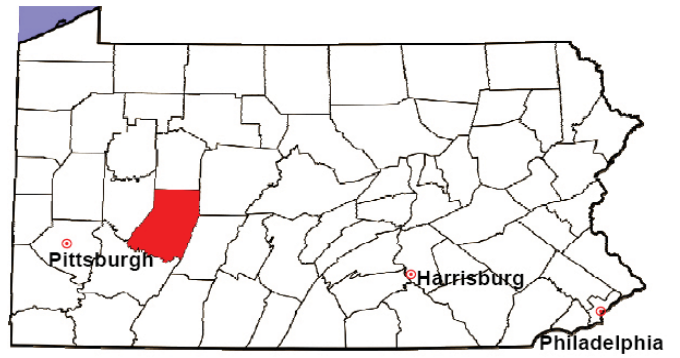
2008 Juvenile Delinquency	No. of Referrals	%
Cases Pending 1/1/08	54	
New Referrals in '08	163	
<b>Cases Available for Processing</b>	<b>217</b>	
Processed By:		
Judge	35	19.7%
Non-Judicial Officer	139	78.1%
Other	4	2.2%
<b>Cases Processed</b>	<b>178</b>	<b>100.0%</b>
<b>Cases Pending 12/31/08</b>	<b>39</b>	

Juvenile Delinquency New Referrals, 1998-2008



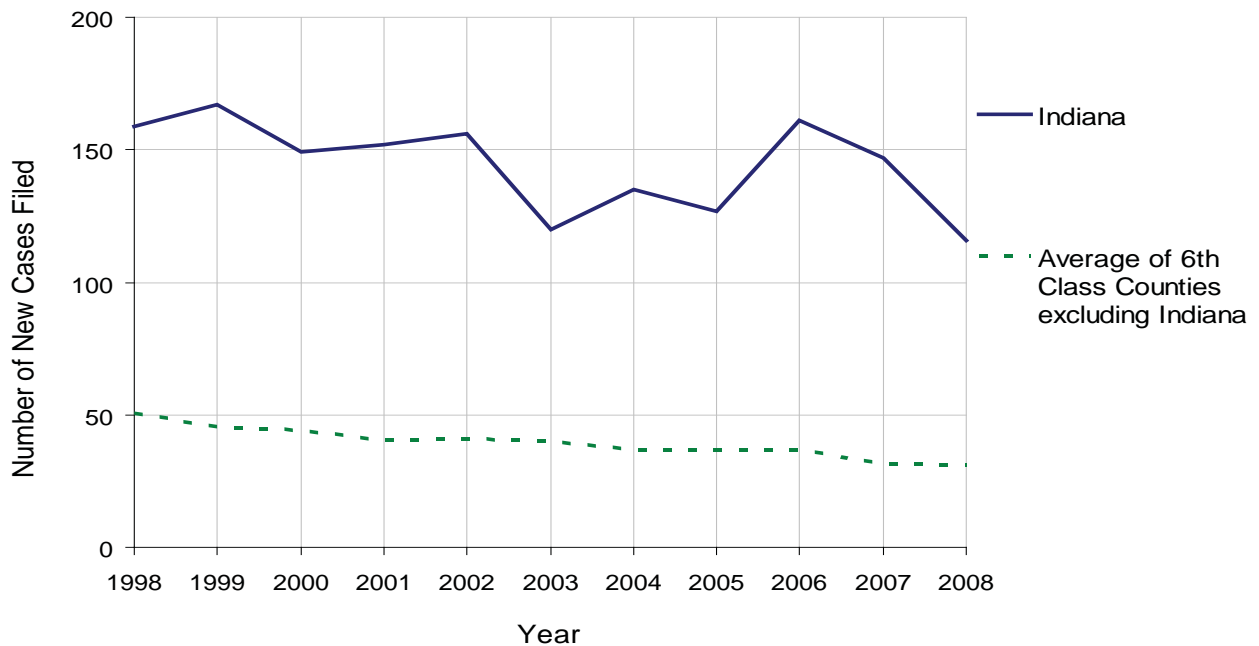
# INDIANA COUNTY

2008 Population Estimate: 87,479  
 Class of County: 6th  
 No. of Common Pleas Court Judgeships: 3



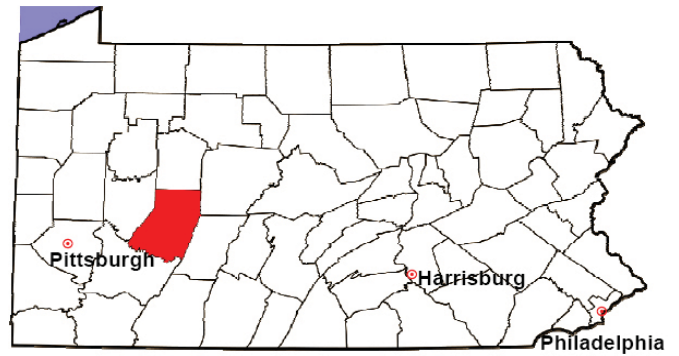
2008 Accounts	No. of Accounts	%
Cases Pending 1/1/08	10	
New Cases Filed in '08	116	
<b>Cases Available for Processing</b>	<b>126</b>	
Processed By:		
Contested before a Judge	2	1.8%
Contested before a Non-Judicial Officer	0	0.0%
Uncontested	107	98.2%
Other	0	0.0%
<b>Cases Processed</b>	<b>109</b>	<b>100.0%</b>
<b>Cases Pending 12/31/08</b>	<b>17</b>	

Accounts New Cases Filed, 1998-2008



# INDIANA COUNTY

2008 Population Estimate: 87,479  
 Class of County: 6th  
 No. of Common Pleas Court Judgeships: 3

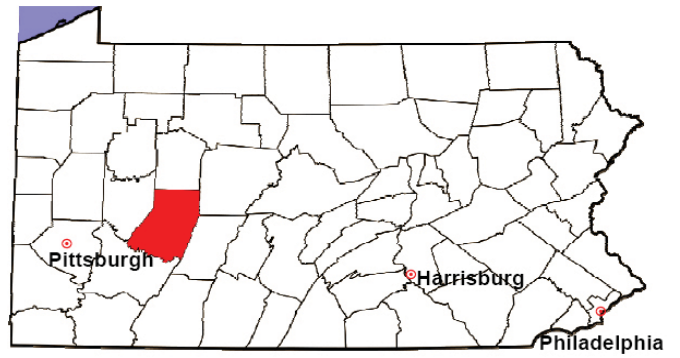


<b>2008 Adoptions</b>		No. of Cases	%
Cases Pending 1/1/08		25	
New Cases Filed in '08		26	
<b>Cases Available for Processing</b>		<b>51</b>	
Processed By:			
Contested before a Judge	Granted	0	0.0%
	Denied	0	0.0%
Uncontested	Granted	23	95.8%
	Denied	0	0.0%
Other		1	4.2%
<b>Cases Processed</b>		<b>24</b>	<b>100.0%</b>
<b>Cases Pending 12/31/08</b>		<b>27</b>	

Note: Prior to 2008, each petition was counted as one new case, regardless of the number of children listed on the petition. Starting in 2008, each child listed on a petition is counted as a separate case. Therefore, statistics for 2008 should not be compared with those for previous years.

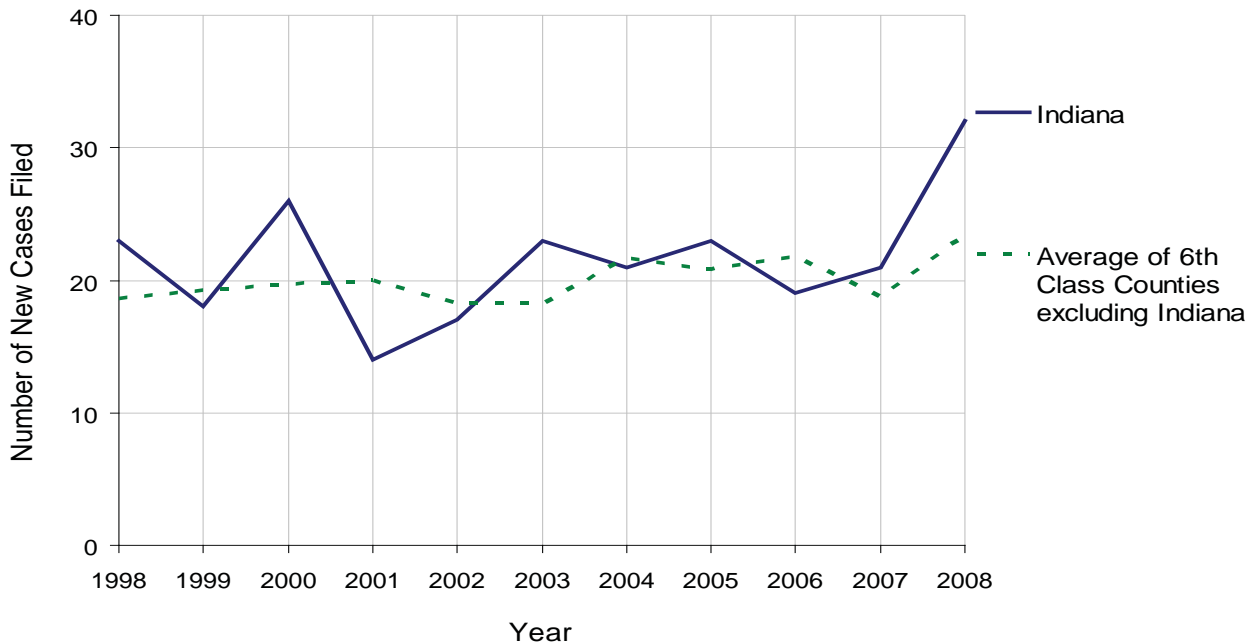
# INDIANA COUNTY

2008 Population Estimate: 87,479  
 Class of County: 6th  
 No. of Common Pleas Court Judgeships: 3



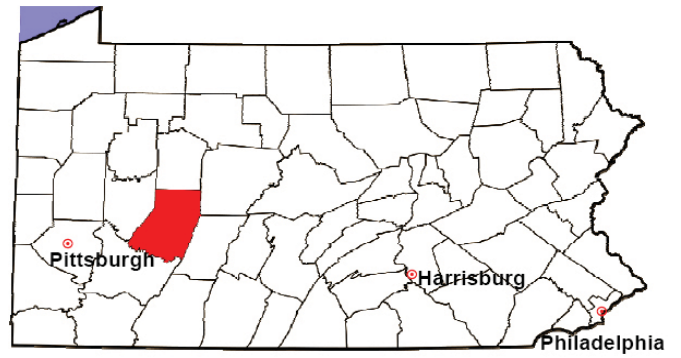
2008 Relinquishments/Terminations	No. of Petitions	%
Cases Pending 1/1/08	13	
New Cases Filed in '08	32	
<b>Cases Available for Processing</b>	<b>45</b>	
Processed By:		
Contested before a Judge	0	0.0%
Uncontested	12	80.0%
Other	3	20.0%
<b>Cases Processed</b>	<b>15</b>	<b>100.0%</b>
<b>Cases Pending 12/31/08</b>	<b>30</b>	

Relinquishments/Terminations New Cases Filed, 1998-2008



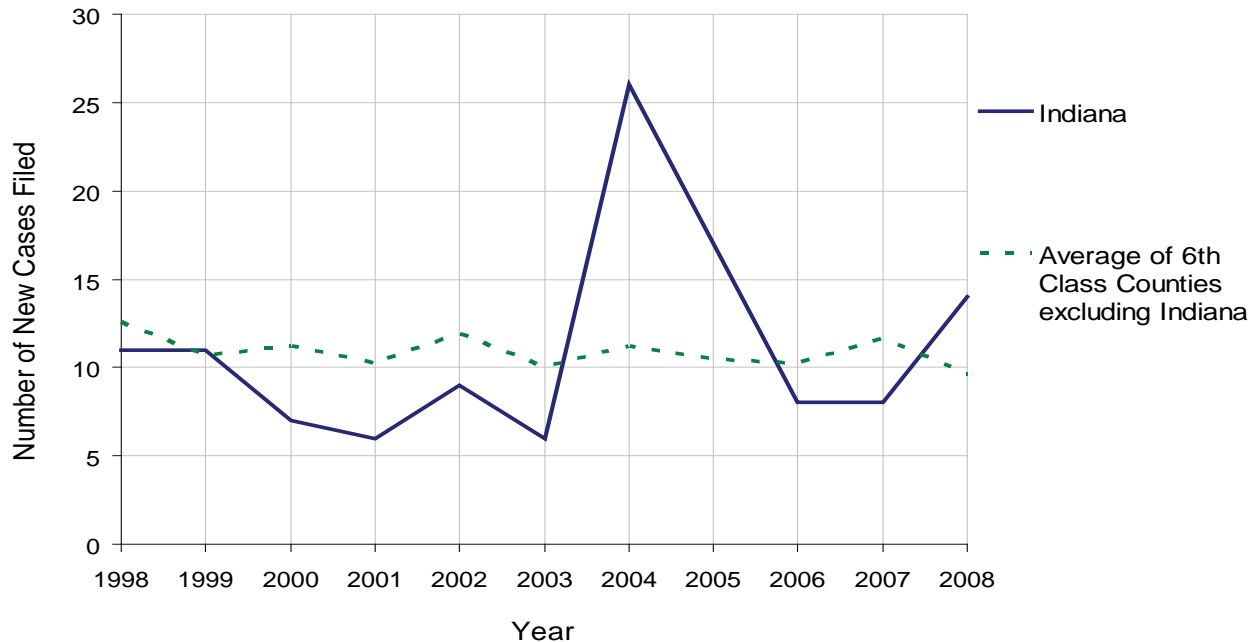
# INDIANA COUNTY

2008 Population Estimate: 87,479  
 Class of County: 6th  
 No. of Common Pleas Court Judgeships: 3



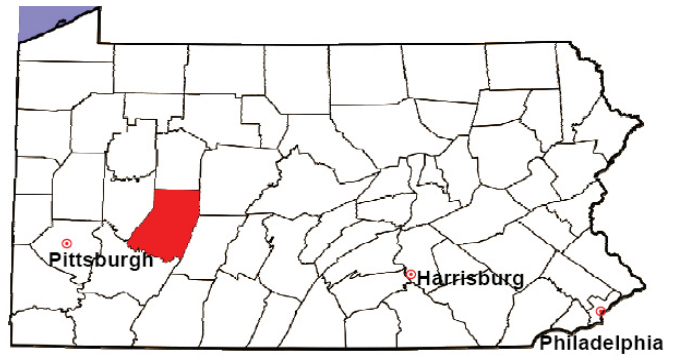
2008 Appointment of Guardians	No. of Petitions	%
Cases Pending 1/1/08	7	
New Cases Filed in '08	14	
<b>Cases Available for Processing</b>	<b>21</b>	
Processed By:		
Contested before a Judge	0	0.0%
Uncontested	8	66.7%
Other	4	33.3%
<b>Cases Processed</b>	<b>12</b>	<b>100.0%</b>
<b>Cases Pending 12/31/08</b>	<b>9</b>	

Appointment of Guardians New Cases Filed, 1998-2008



# INDIANA COUNTY

2008 Population Estimate: 87,479  
 Class of County: 6th  
 No. of Common Pleas Court Judgeships: 3



2008 Jury Activity & Performance Measures		
A. Juror Days	1,167	
B. Number Sent to Voir Dire	932	
Voir Dire Attendance Rate $(B/A * 100)$		79.9%
C. Number of Voir Dires Started	21	
Juror Days Per Voir Dire Starts $(A/C)$		56
D. Number of Jurors Selected	266	
Juror Selection Rate $(D/B * 100)$		28.5%
E. Number of Jury Trials Started	19	
Juror Days Per Trial Starts $(A/E)$		61
Number of Voir Dires Not Resulting in Trial $(C-E)$		2
Percent Voir Dires Not Resulting in Trial $(C-E)/C * 100$		9.5%
F. Pool Days	15	
G. Zero Panel Days	0	
Percent Zero Panel Days $(G/F * 100)$		0.0%
H. Total Juror Fees Incurred	\$23,405	
Average Juror Fees Per Trial $(H/E)$		\$1,232

Average Juror Fees Per Trial, 1998-2008

