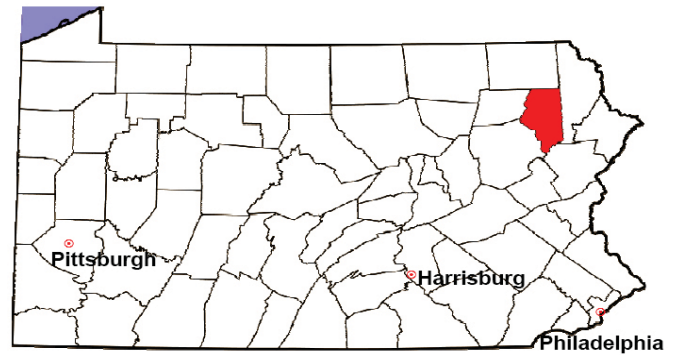


# LACKAWANNA COUNTY

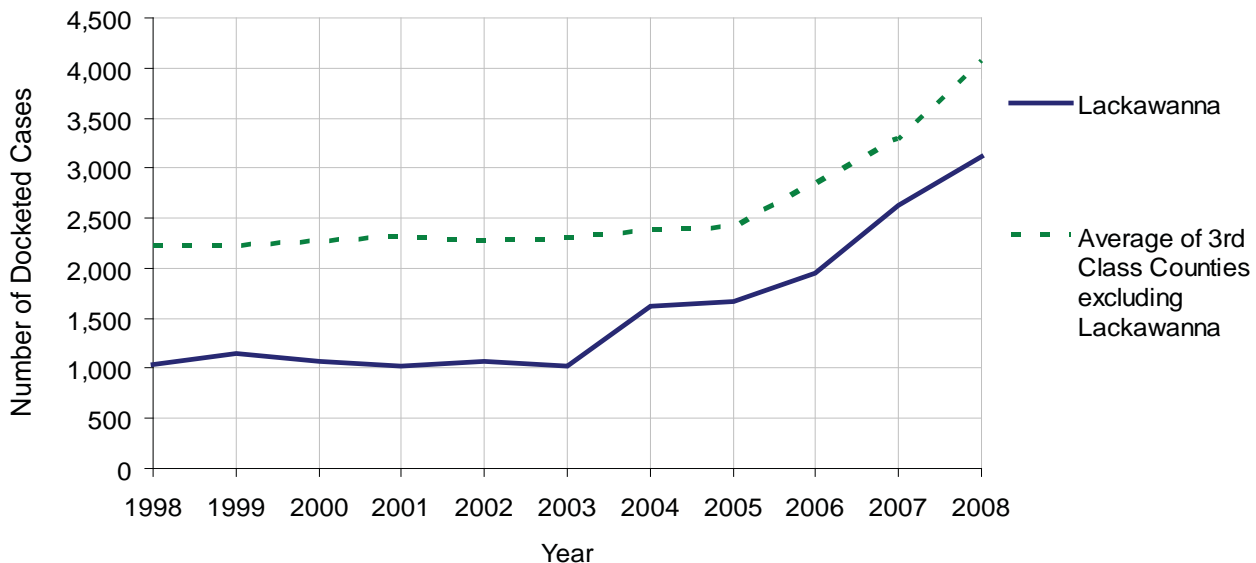
2008 Population Estimate: 209,408  
 Class of County: 3rd  
 No. of Common Pleas Court Judgeships: 8



2008 Civil		Civil Action		
Docketed Cases		3,112		
Arbitrated Cases		92		
Trial-Ready Cases:		Civil Action	Other	Total
Cases Pending 1/1/08		141	0	141
Became Trial Ready in '08		243	0	243
Restored to Trial List		24	0	24
Appeals from Arbitration		34	0	34
<b>Cases Available for Trial</b>		<b>442</b>	<b>0</b>	<b>442</b>
Disposed By:				
Settlement		217	0	217
Non-Jury Trial		14	0	14
Jury Trial		31	0	31
Stricken from Trial List		22	0	22
Other		17	0	17
<b>Cases Disposed</b>		<b>301</b>	<b>0</b>	<b>301</b>
<b>Cases Pending 12/31/08</b>		<b>141</b>	<b>0</b>	<b>141</b>

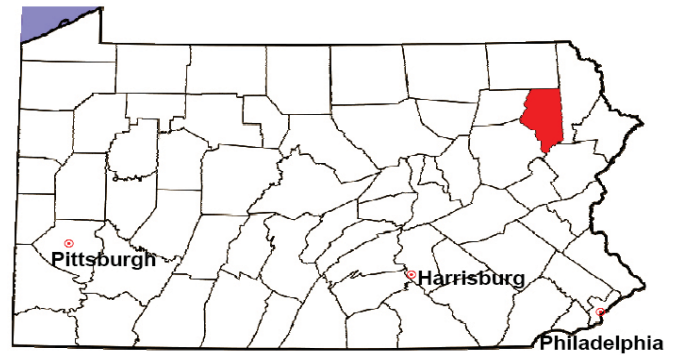
Age of Trial-Ready Cases as of 12/31/08 (Civil Action Only)		
0-6 months	90	64%
7-12 months	36	26%
13-18 months	11	8%
19-24 months	1	1%
25-30 months	0	0%
31-36 months	3	2%
Over 36 months	0	0%
<b>Total</b>	<b>141</b>	<b>100%</b>

Docketed Cases, 1998-2008



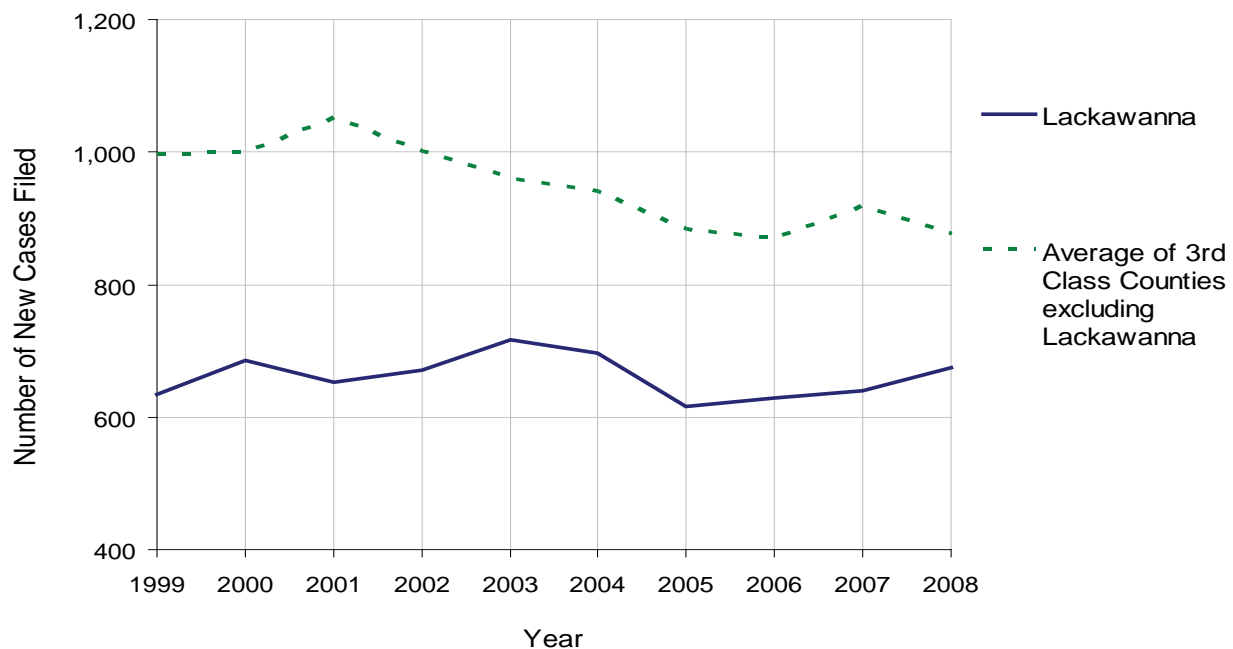
# LACKAWANNA COUNTY

2008 Population Estimate: 209,408  
 Class of County: 3rd  
 No. of Common Pleas Court Judgeships: 8



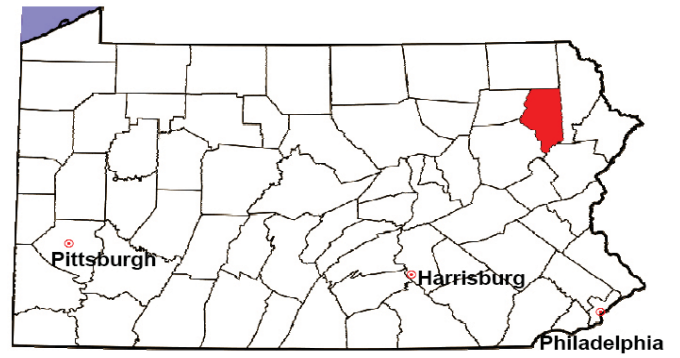
<b>2008 Protection From Abuse</b>	No. of Petitions	%
Cases Pending 1/1/08	86	
New Cases Filed in '08	675	
<b>Cases Available for Processing</b>	<b>761</b>	
Processed By:		
Final Order After Hearing	98	14.7%
Final Order by Stipulation or Agreement	326	49.0%
Dismissal	79	11.9%
Withdrawal	154	23.2%
Other	8	1.2%
<b>Cases Processed</b>	<b>665</b>	<b>100.0%</b>
<b>Cases Pending 12/31/08</b>	<b>96</b>	

PFA New Cases Filed, 1999-2008



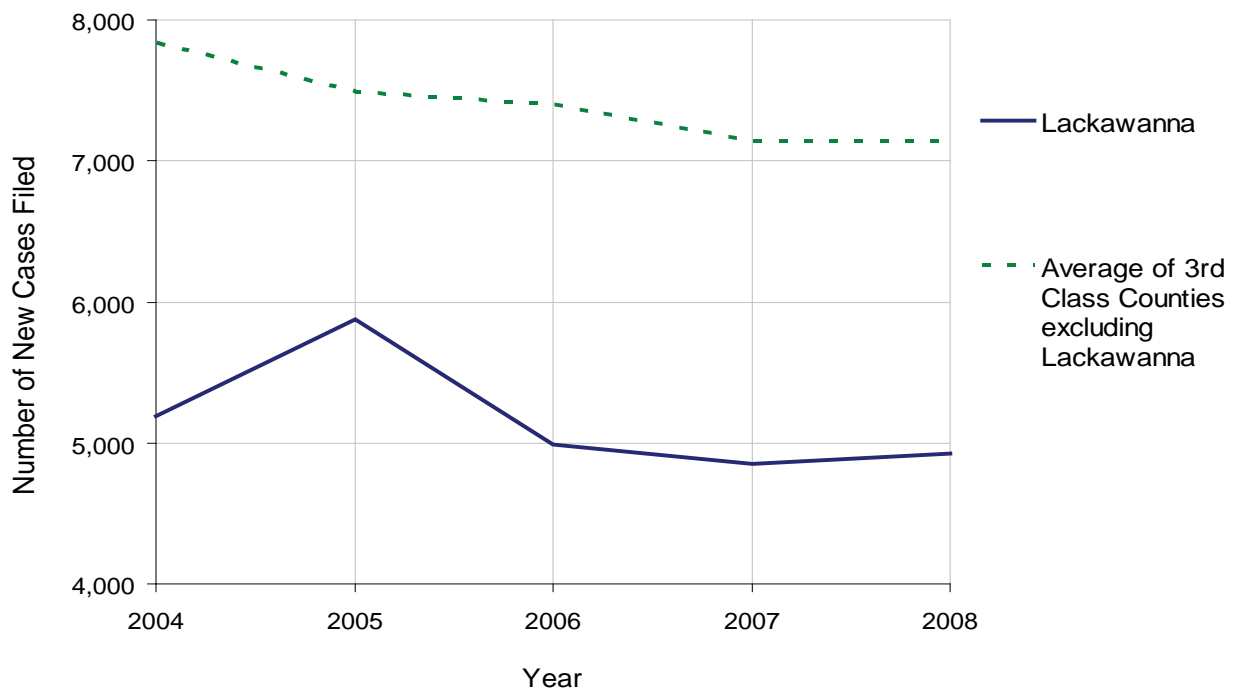
# LACKAWANNA COUNTY

2008 Population Estimate: 209,408  
 Class of County: 3rd  
 No. of Common Pleas Court Judgeships: 8



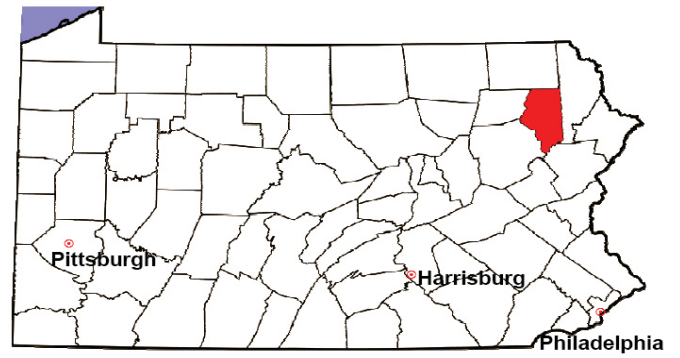
<b>2008 Spousal &amp; Child Support</b>	No. of Petitions	%
Cases Pending 1/1/08	1,285	
New Cases Filed in '08	4,921	
Dockets Transferred In (+)	31	
Dockets Transferred Out (-)	55	
<b>Cases Available for Processing</b>	<b>6,182</b>	
Processed By:		
Judge	35	0.7%
Intake Officer	4,857	97.2%
Hearing Officer	103	2.1%
Other	2	0.0%
<b>Cases Processed</b>	<b>4,997</b>	<b>100.0%</b>
<b>Cases Pending 12/31/08</b>	<b>1,185</b>	

Spousal & Child Support New Cases Filed, 1998-2008



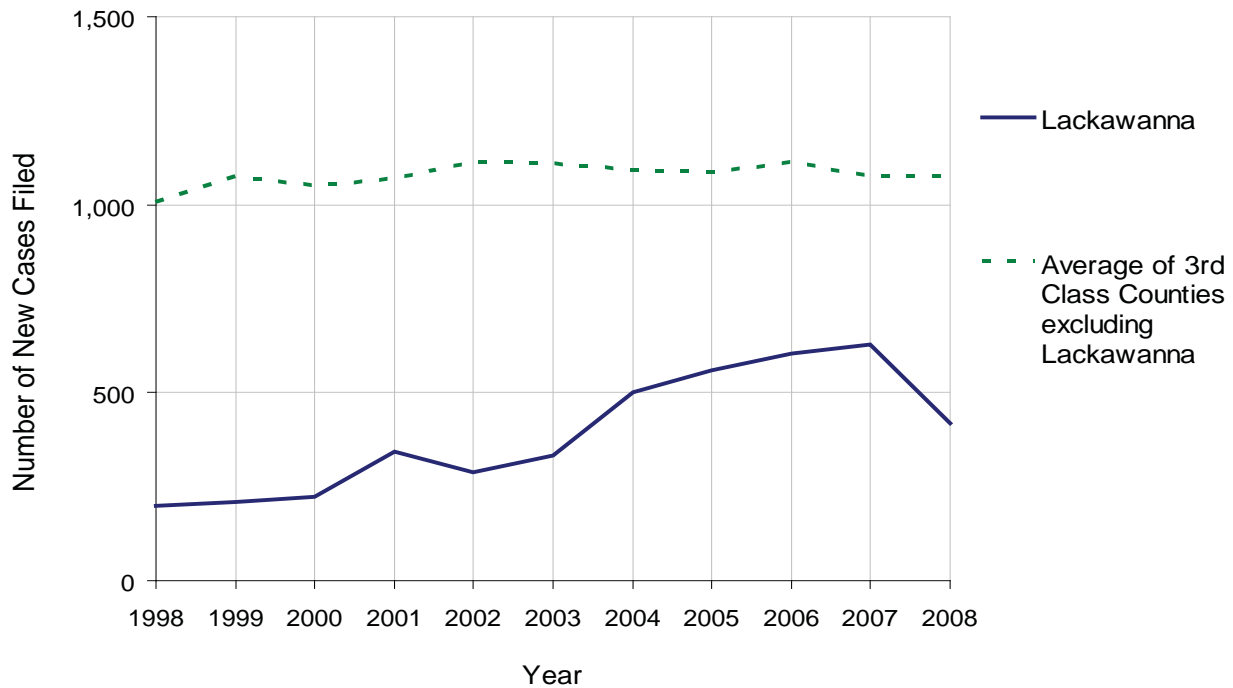
# LACKAWANNA COUNTY

2008 Population Estimate: 209,408  
 Class of County: 3rd  
 No. of Common Pleas Court Judgeships: 8



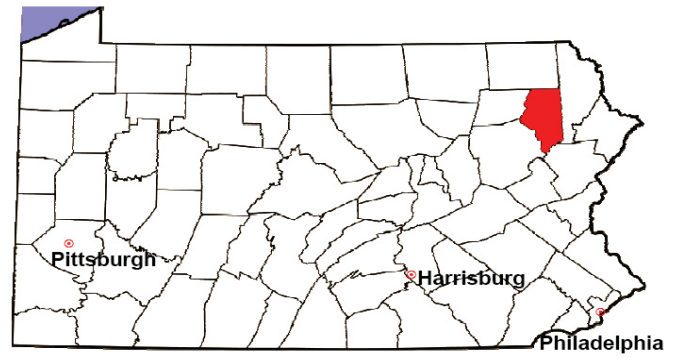
<b>2008 Custody/Partial Custody/Visitation</b>	No. of Petitions	%
Cases Pending 1/1/08	166	
New Cases Filed in '08	420	
<b>Cases Available for Processing</b>	<b>586</b>	
Processed By:		
Judge	34	7.0%
<b>Non-Judicial Officer</b>	<b>383</b>	<b>79.3%</b>
Other	66	13.7%
<b>Cases Processed</b>	<b>483</b>	<b>100.0%</b>
<b>Cases Pending 12/31/08</b>	<b>103</b>	

Custody/Partial Custody/Visitation New Cases Filed  
 1998-2008



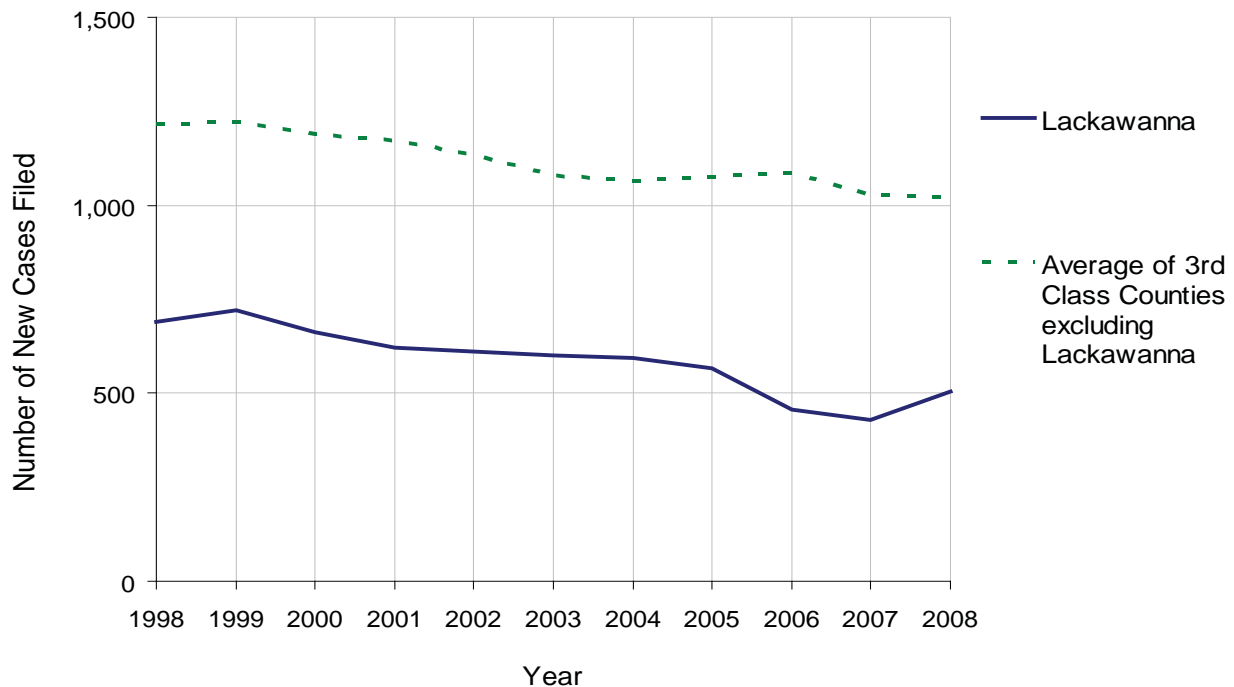
# LACKAWANNA COUNTY

2008 Population Estimate: 209,408  
 Class of County: 3rd  
 No. of Common Pleas Court Judgeships: 8



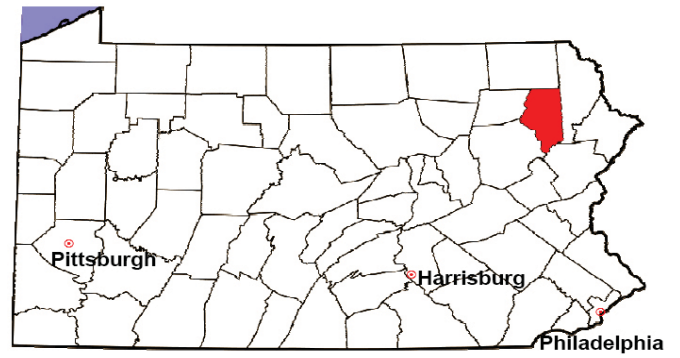
<b>2008 Divorce</b>	No. of Petitions	%
Cases Pending 1/1/08	79	
New Cases Filed in '08	503	
<b>Cases Available for Processing</b>	<b>582</b>	
Processed By:		
Contested Before a Judge	0	0.0%
Contested Before a Master	51	10.7%
Uncontested	425	89.3%
Other	0	0.0%
<b>Cases Processed</b>	<b>476</b>	<b>100.0%</b>
<b>Cases Pending 12/31/08</b>	<b>106</b>	

Divorce New Cases Filed, 1998-2008



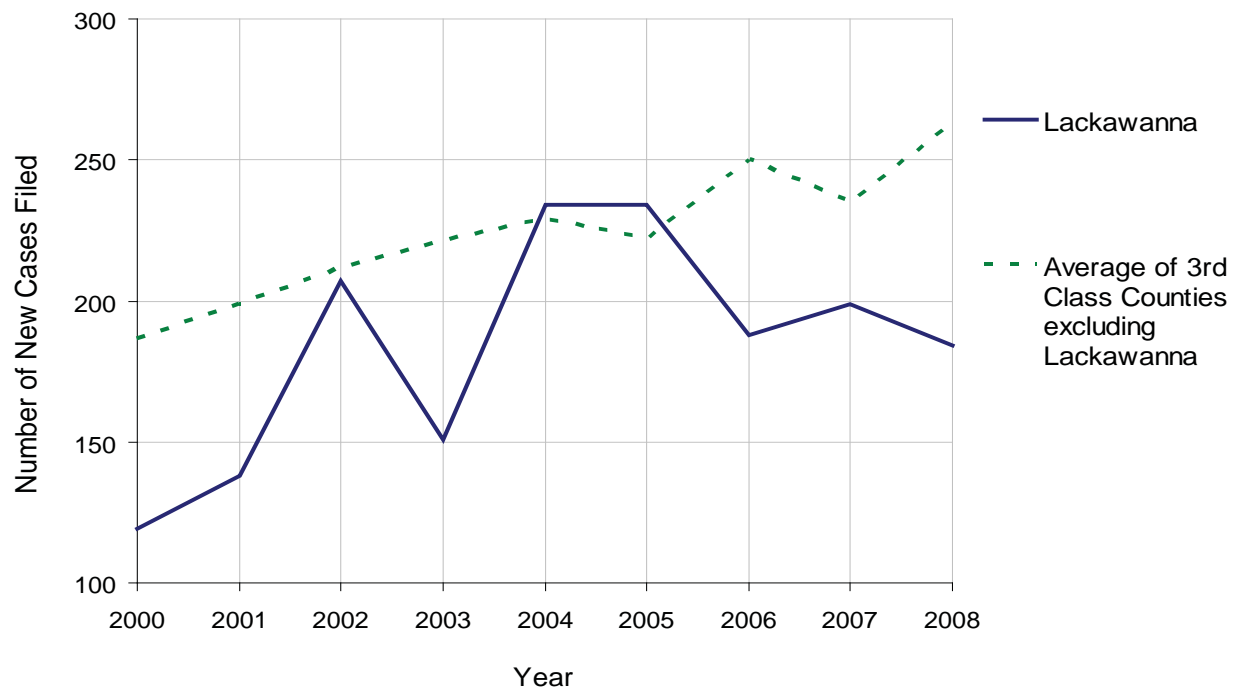
# LACKAWANNA COUNTY

2008 Population Estimate: 209,408  
 Class of County: 3rd  
 No. of Common Pleas Court Judgeships: 8



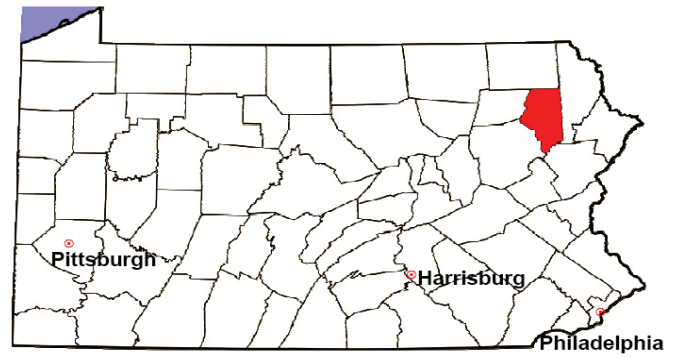
2008 Juvenile Dependency Abuse/Neglect	No. of Petitions	%
Cases Pending 1/1/08	0	
New Cases Filed in '08	184	
<b>Cases Available for Processing</b>	<b>184</b>	
Processed By:		
Judge	107	60.8%
Non-Judicial Officer	62	35.2%
Other	7	4.0%
<b>Cases Processed</b>	<b>176</b>	<b>100.0%</b>
<b>Cases Pending 12/31/08</b>	<b>8</b>	

Abuse/Neglect New Cases Filed, 2000-2008



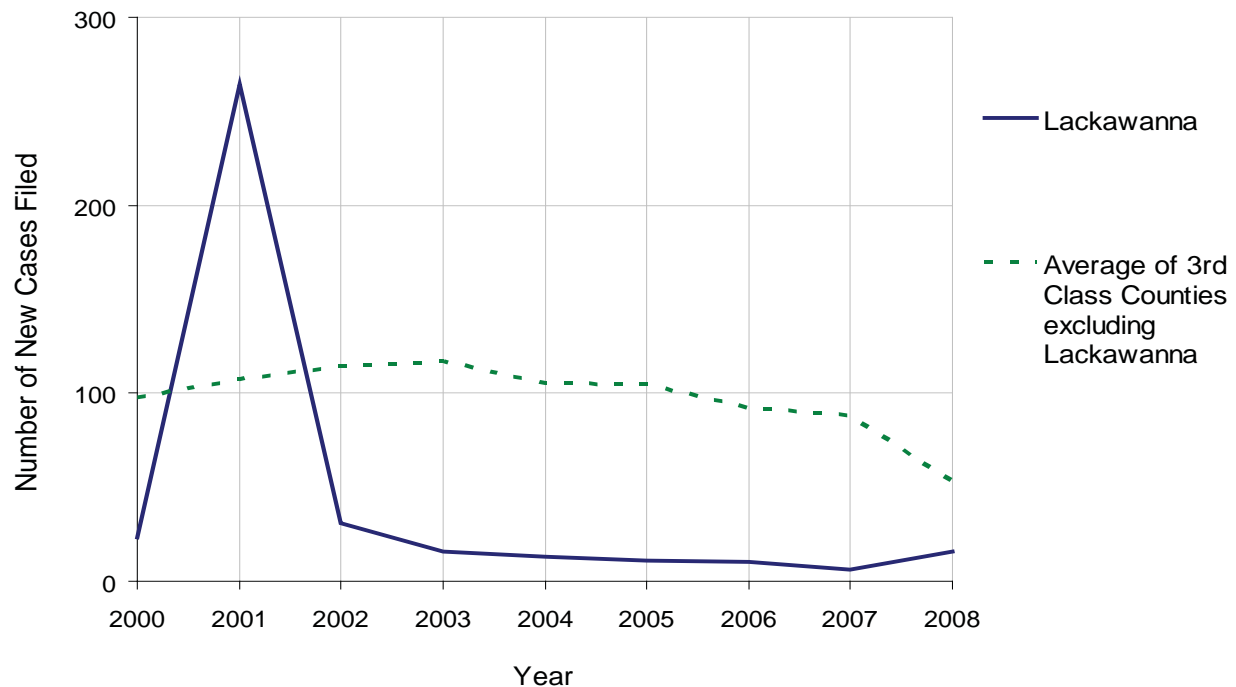
# LACKAWANNA COUNTY

2008 Population Estimate: 209,408  
 Class of County: 3rd  
 No. of Common Pleas Court Judgeships: 8



2008 Juvenile Dependency Status Offenses	No. of Petitions	%
Cases Pending 1/1/08	0	
New Cases Filed in '08	16	
<b>Cases Available for Processing</b>	<b>16</b>	
Processed By:		
Judge	5	31.3%
Non-Judicial Officer	0	0.0%
Other	11	68.8%
<b>Cases Processed</b>	<b>16</b>	<b>100.0%</b>
<b>Cases Pending 12/31/08</b>	<b>0</b>	

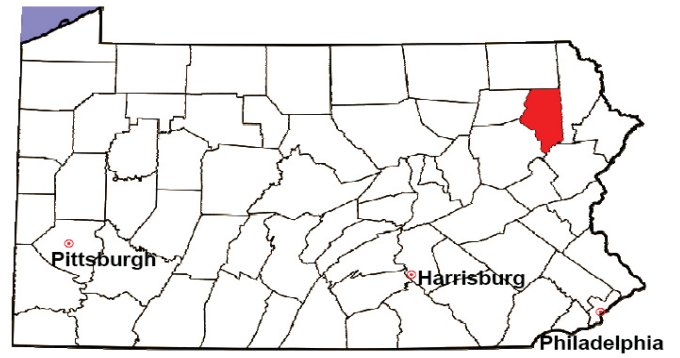
Status Offenses New Cases Filed, 2000-2008



Note: A sharp increase or decrease may reflect changes in practice or counting methods.

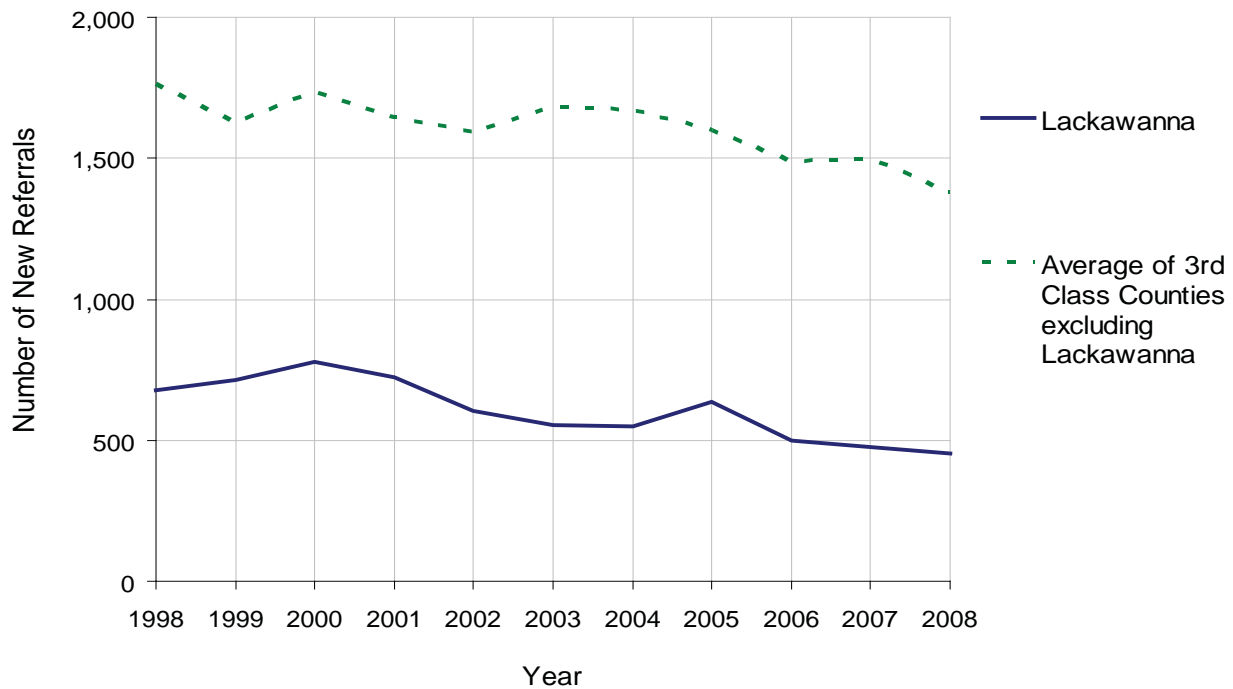
# LACKAWANNA COUNTY

2008 Population Estimate: 209,408  
 Class of County: 3rd  
 No. of Common Pleas Court Judgeships: 8



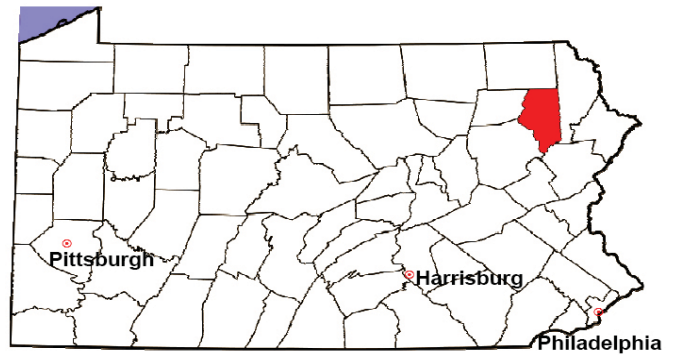
<b>2008 Juvenile Delinquency</b>	No. of Referrals	%
Cases Pending 1/1/08	319	
New Referrals in '08	454	
<b>Cases Available for Processing</b>	<b>773</b>	
Processed By:		
Judge	172	36.1%
Non-Judicial Officer	304	63.9%
Other	0	0.0%
<b>Cases Processed</b>	<b>476</b>	<b>100.0%</b>
<b>Cases Pending 12/31/08</b>	<b>297</b>	

Juvenile Delinquency New Referrals, 1998-2008



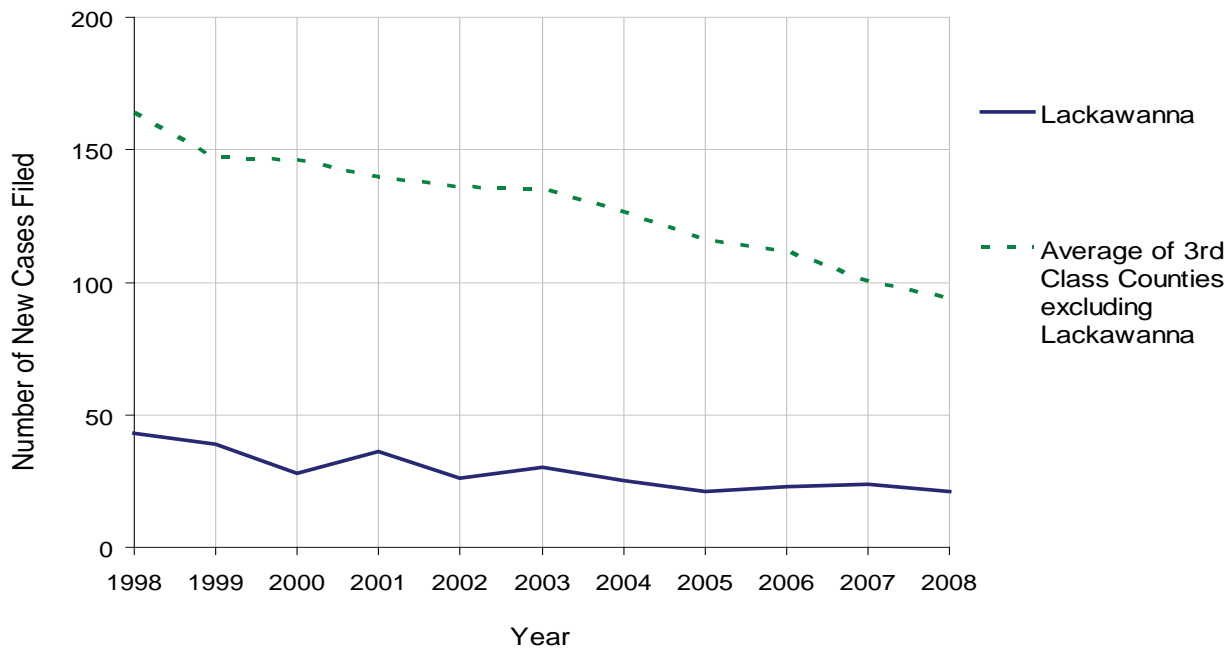
# LACKAWANNA COUNTY

2008 Population Estimate: 209,408  
 Class of County: 3rd  
 No. of Common Pleas Court Judgeships: 8



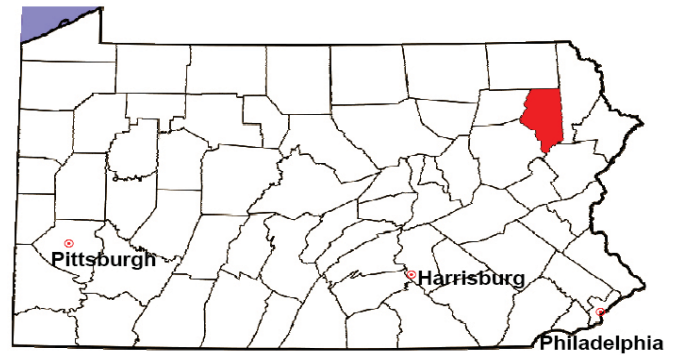
<b>2008 Accounts</b>	No. of Accounts	%
Cases Pending 1/1/08	26	
New Cases Filed in '08	21	
<b>Cases Available for Processing</b>	<b>47</b>	
Processed By:		
Contested before a Judge	0	0.0%
Contested before a Non-Judicial Officer	0	0.0%
Uncontested	18	62.1%
Other	11	37.9%
<b>Cases Processed</b>	<b>29</b>	<b>100.0%</b>
<b>Cases Pending 12/31/08</b>	<b>18</b>	

Accounts New Cases Filed, 1998-2008



# LACKAWANNA COUNTY

2008 Population Estimate: 209,408  
 Class of County: 3rd  
 No. of Common Pleas Court Judgeships: 8

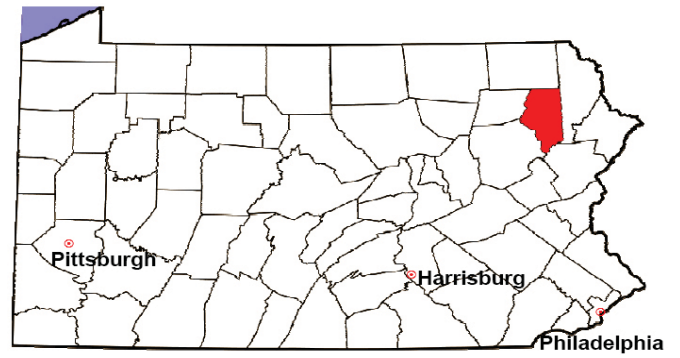


<b>2008 Adoptions</b>		No. of Cases	%
Cases Pending 1/1/08		32	
New Cases Filed in '08		95	
<b>Cases Available for Processing</b>		<b>127</b>	
Processed By:			
Contested before a Judge	Granted	0	0.0%
	Denied	0	0.0%
Uncontested	Granted	115	100.0%
	Denied	0	0.0%
Other		0	0.0%
<b>Cases Processed</b>		<b>115</b>	<b>100.0%</b>
<b>Cases Pending 12/31/08</b>		<b>12</b>	

Note: Prior to 2008, each petition was counted as one new case, regardless of the number of children listed on the petition. Starting in 2008, each child listed on a petition is counted as a separate case. Therefore, statistics for 2008 should not be compared with those for previous years.

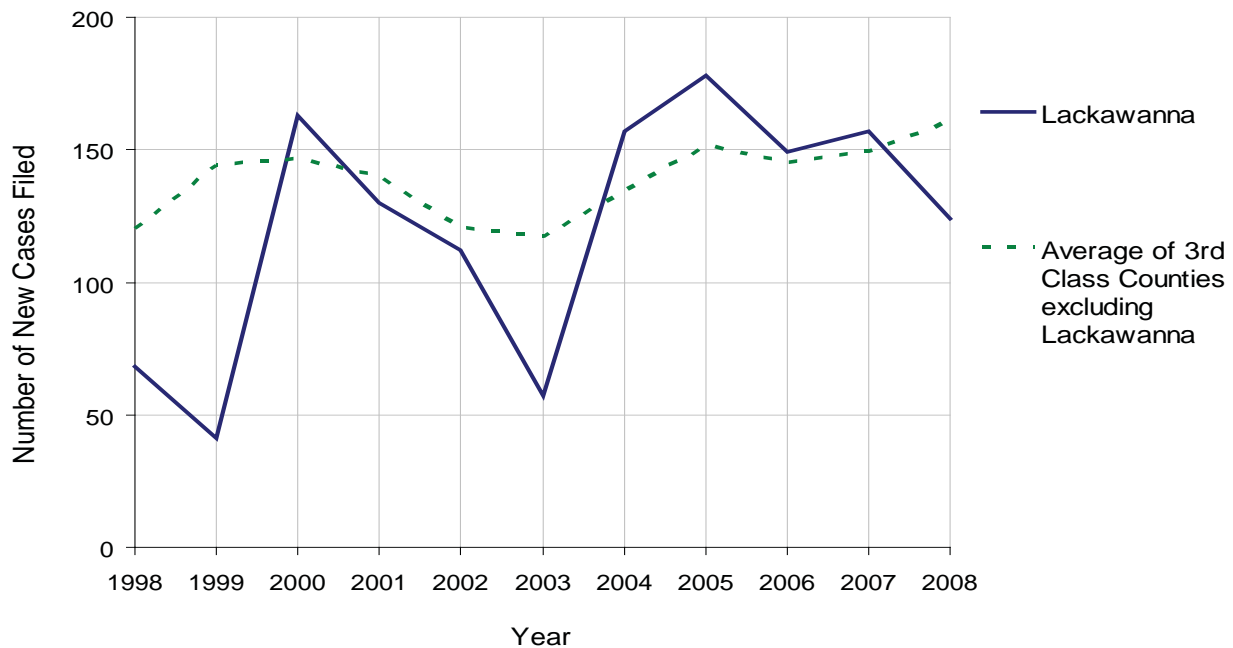
# LACKAWANNA COUNTY

2008 Population Estimate: 209,408  
 Class of County: 3rd  
 No. of Common Pleas Court Judgeships: 8



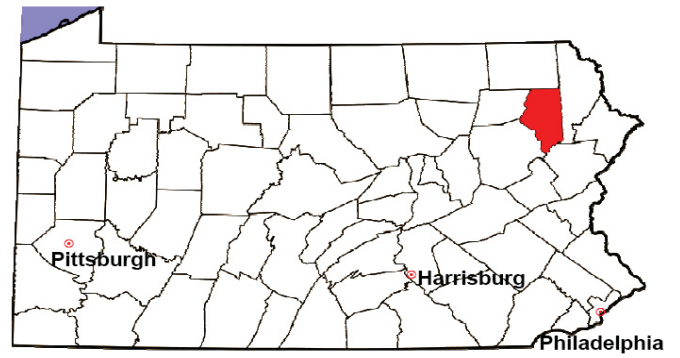
<b>2008 Relinquishments/Terminations</b>	No. of Petitions	%
Cases Pending 1/1/08	105	
New Cases Filed in '08	124	
<b>Cases Available for Processing</b>	<b>229</b>	
Processed By:		
Contested before a Judge	12	6.6%
Uncontested	106	58.2%
Other	64	35.2%
<b>Cases Processed</b>	<b>182</b>	<b>100.0%</b>
<b>Cases Pending 12/31/08</b>	<b>47</b>	

Relinquishments/Terminations New Cases Filed, 1998-2008



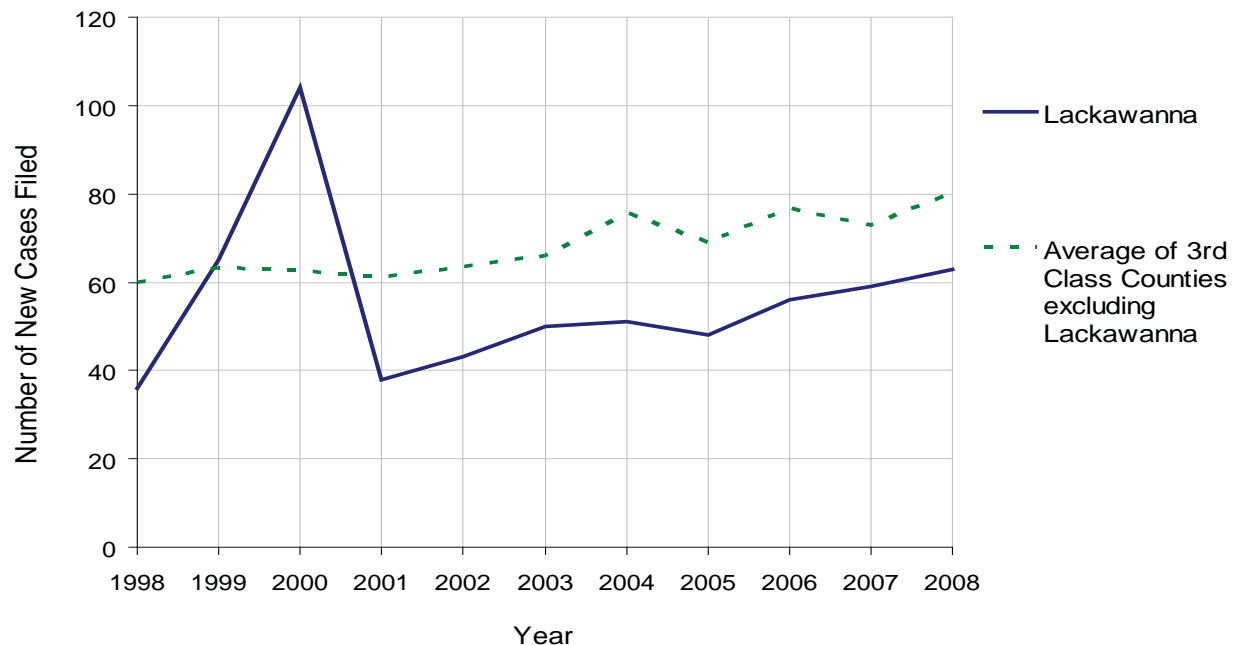
# LACKAWANNA COUNTY

2008 Population Estimate: 209,408  
 Class of County: 3rd  
 No. of Common Pleas Court Judgeships: 8



<b>2008 Appointment of Guardians</b>	No. of Petitions	%
Cases Pending 1/1/08	39	
New Cases Filed in '08	63	
<b>Cases Available for Processing</b>	<b>102</b>	
Processed By:		
Contested before a Judge	3	3.7%
Uncontested	46	56.8%
Other	32	39.5%
<b>Cases Processed</b>	<b>81</b>	<b>100.0%</b>
<b>Cases Pending 12/31/08</b>	<b>21</b>	

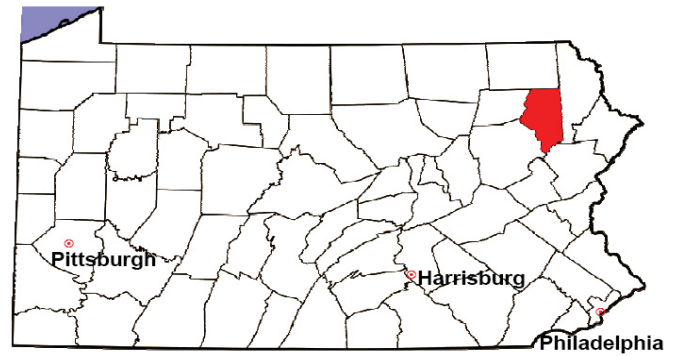
Appointment of Guardians New Cases Filed, 1998-2008



Note: A sharp increase or decrease may reflect changes in practice or counting methods.

# LACKAWANNA COUNTY

2008 Population Estimate: 209,408  
 Class of County: 3rd  
 No. of Common Pleas Court Judgeships: 8



2008 Jury Activity & Performance Measures		
A. Juror Days	5,710	
B. Number Sent to Voir Dire	3,851	
Voir Dire Attendance Rate $(B/A * 100)$		67.4%
C. Number of Voir Dires Started	65	
Juror Days Per Voir Dire Starts $(A/C)$		88
D. Number of Jurors Selected	789	
Juror Selection Rate $(D/B * 100)$		20.5%
E. Number of Jury Trials Started	57	
Juror Days Per Trial Starts $(A/E)$		100
Number of Voir Dires Not Resulting in Trial $(C-E)$		8
Percent Voir Dires Not Resulting in Trial $(C-E)/C * 100$		12.3%
F. Pool Days	46	
G. Zero Panel Days	25	
Percent Zero Panel Days $(G/F * 100)$		54.3%
H. Total Juror Fees Incurred	\$113,087	
Average Juror Fees Per Trial $(H/E)$		\$1,984

Average Juror Fees Per Trial, 1998-2008

