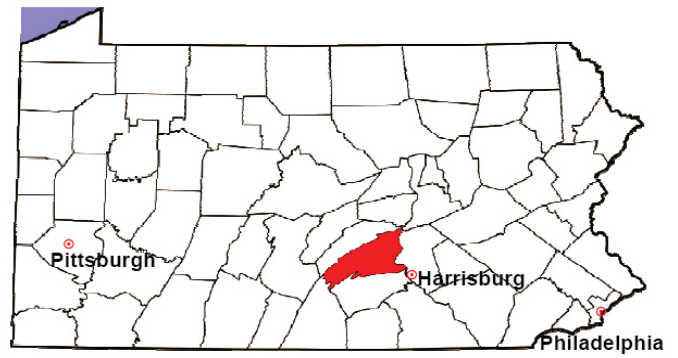


PERRY COUNTY

2008 Population Estimate: 45,185

Class of County: 7th

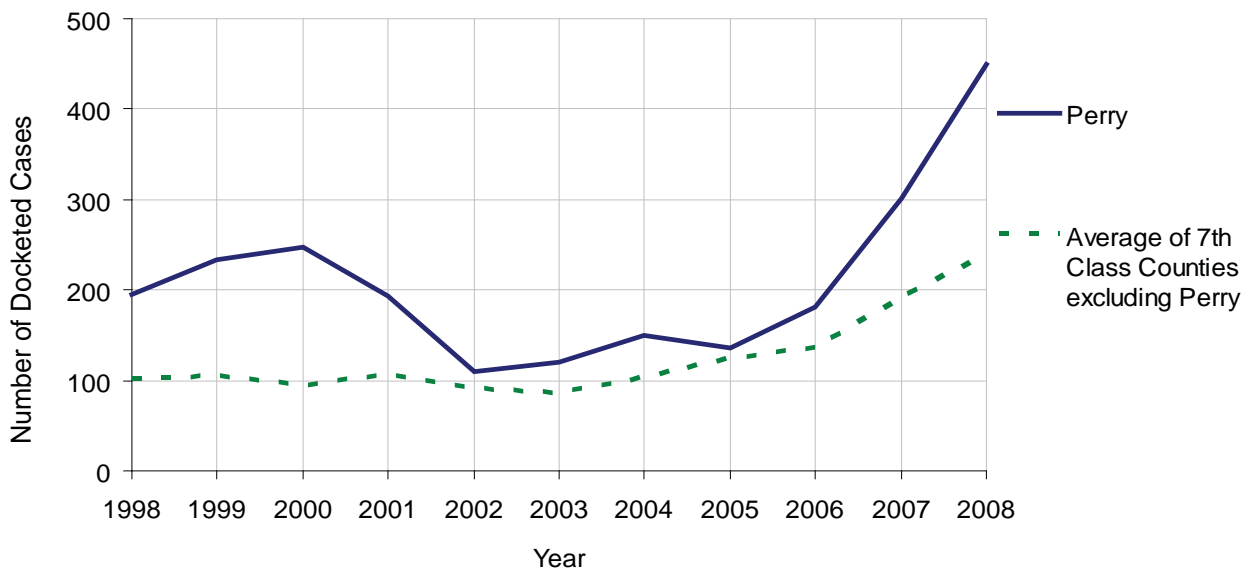
No. of Common Pleas Court Judgeships: 2
(Juniata and Perry combined)



2008 Civil		Civil Action		
Docketed Cases		449		
Arbitrated Cases		7		
Trial-Ready Cases:		Civil Action	Other	Total
Cases Pending 1/1/08		9	0	9
Became Trial Ready in '08		6	0	6
Restored to Trial List		2	0	2
Appeals from Arbitration		4	0	4
Cases Available for Trial		21	0	21
Disposed By:				
Settlement		1	0	1
Non-Jury Trial		1	0	1
Jury Trial		1	0	1
Stricken from Trial List		0	0	0
Other		0	0	0
Cases Disposed		3	0	3
Cases Pending 12/31/08		18	0	18

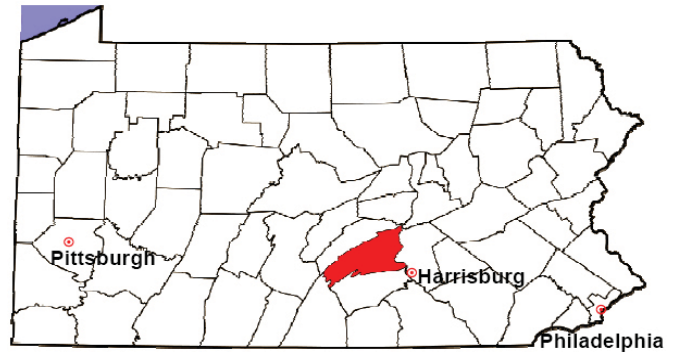
Age of Trial-Ready Cases as of 12/31/08 (Civil Action Only)		
0-6 months	6	33%
7-12 months	6	33%
13-18 months	2	11%
19-24 months	0	0%
25-30 months	0	0%
31-36 months	2	11%
Over 36 months	2	11%
Total	18	100%

Docketed Cases, 1998-2008



PERRY COUNTY

2008 Population Estimate: 45,185
 Class of County: 7th
 No. of Common Pleas Court Judgeships: 2
 (Juniata and Perry combined)



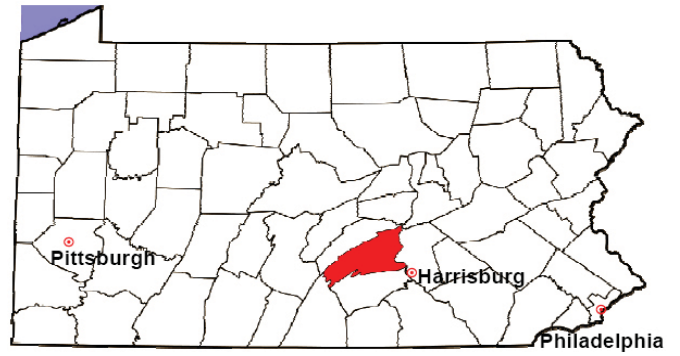
2008 Protection From Abuse	No. of Petitions	%
Cases Pending 1/1/08	10	
New Cases Filed in '08	51	
Cases Available for Processing	61	
Processed By:		
Final Order After Hearing	15	31.9%
Final Order by Stipulation or Agreement	20	42.6%
Dismissal	5	10.6%
Withdrawal	7	14.9%
Other	0	0.0%
Cases Processed	47	100.0%
Cases Pending 12/31/08	14	

PFA New Cases Filed, 1999-2008



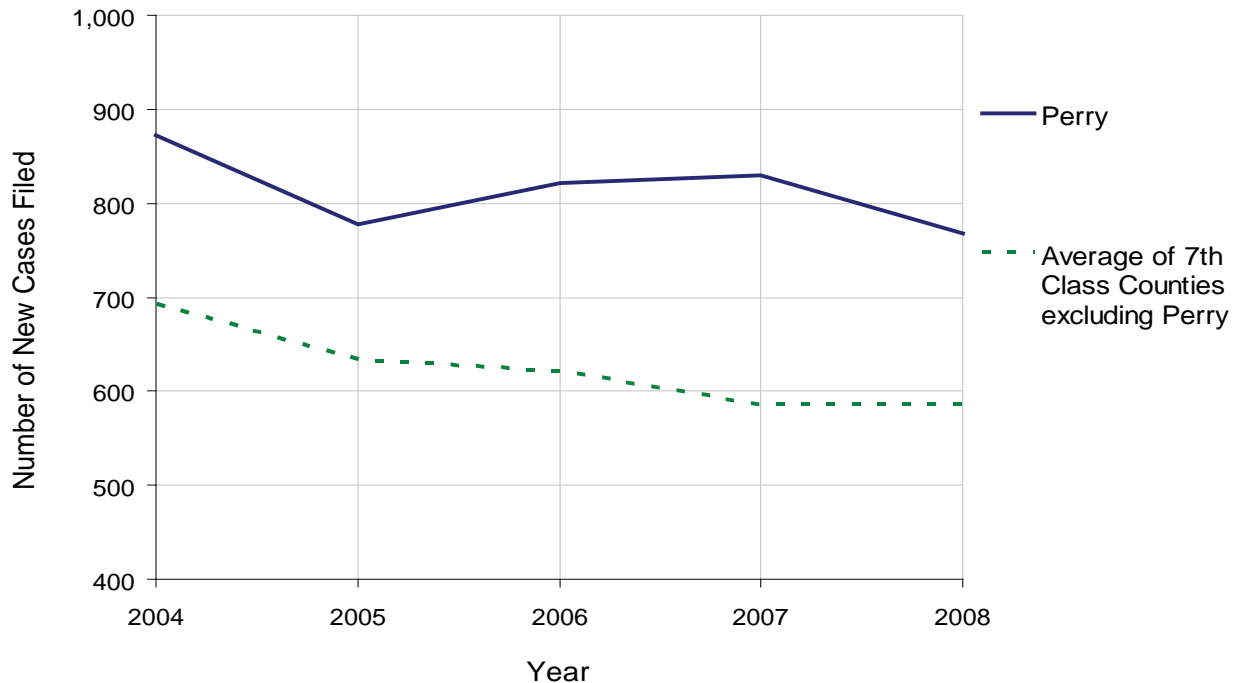
PERRY COUNTY

2008 Population Estimate: 45,185
 Class of County: 7th
 No. of Common Pleas Court Judgeships: 2
 (Juniata and Perry combined)



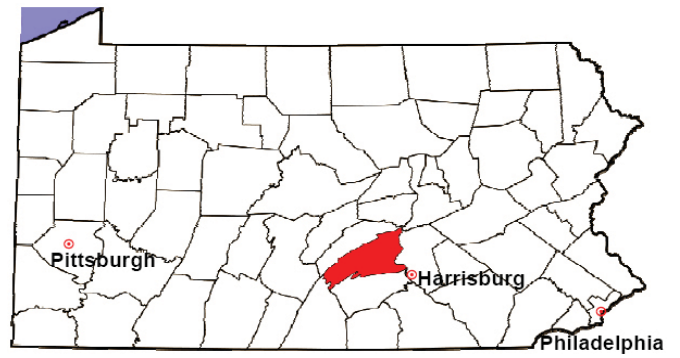
2008 Spousal & Child Support	No. of Petitions	%
Cases Pending 1/1/08	241	
New Cases Filed in '08	768	
Dockets Transferred In (+)	8	
Dockets Transferred Out (-)	16	
Cases Available for Processing	1,001	
Processed By:		
Judge	49	6.3%
Intake Officer	725	93.7%
Hearing Officer	0	0.0%
Other	0	0.0%
Cases Processed	774	100.0%
Cases Pending 12/31/08	227	

Spousal & Child Support New Cases Filed, 1998-2008



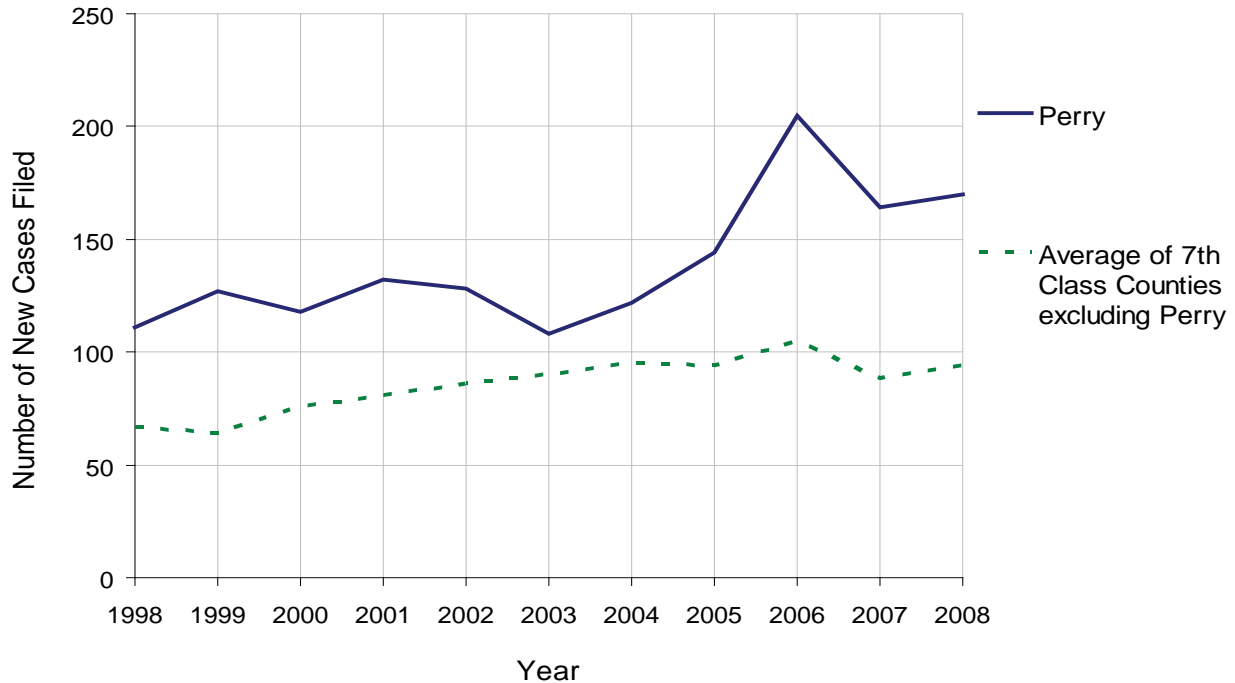
PERRY COUNTY

2008 Population Estimate: 45,185
 Class of County: 7th
 No. of Common Pleas Court Judgeships: 2
 (Juniata and Perry combined)



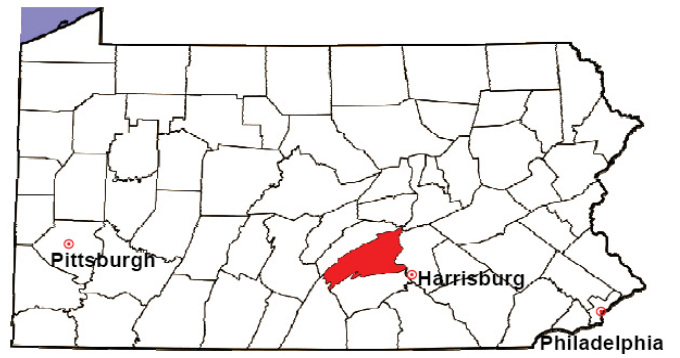
2008 Custody/Partial Custody/Visitation	No. of Petitions	%
Cases Pending 1/1/08	375	
New Cases Filed in '08	170	
Cases Available for Processing	545	
Processed By:		
Judge	70	51.1%
Non-Judicial Officer	27	19.7%
Other	40	29.2%
Cases Processed	137	100.0%
Cases Pending 12/31/08	408	

Custody/Partial Custody/Visitation New Cases Filed
 1998-2008



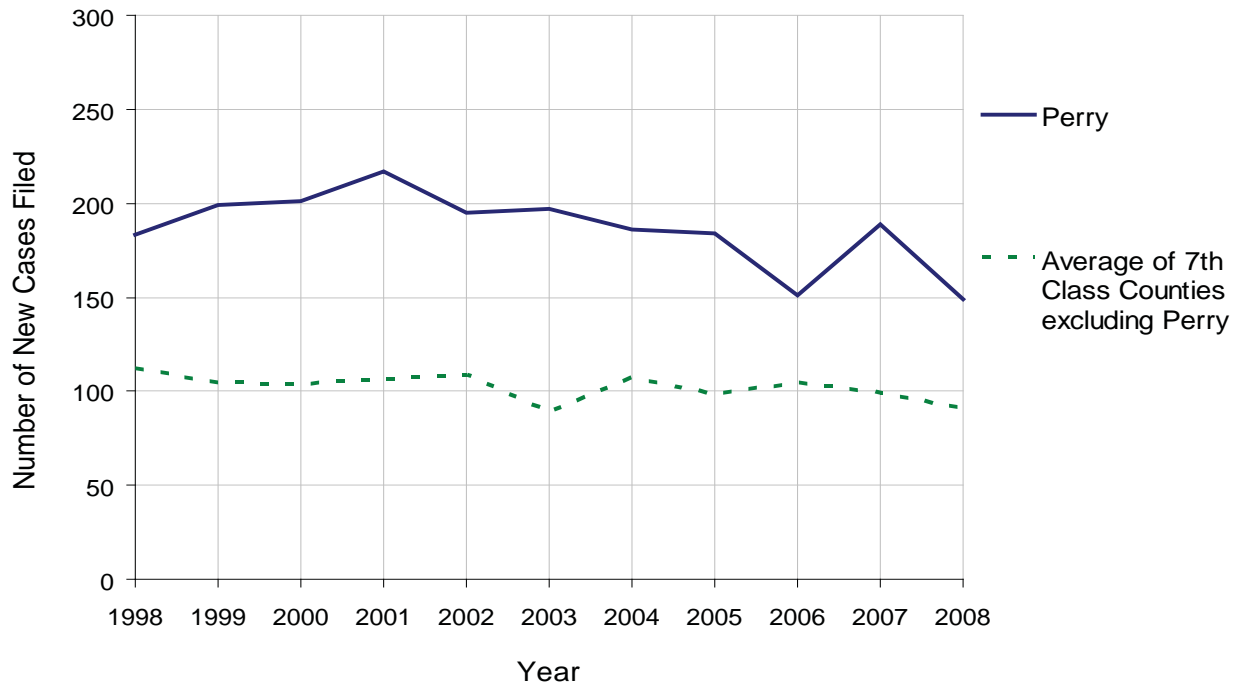
PERRY COUNTY

2008 Population Estimate: 45,185
 Class of County: 7th
 No. of Common Pleas Court Judgeships: 2
 (Juniata and Perry combined)



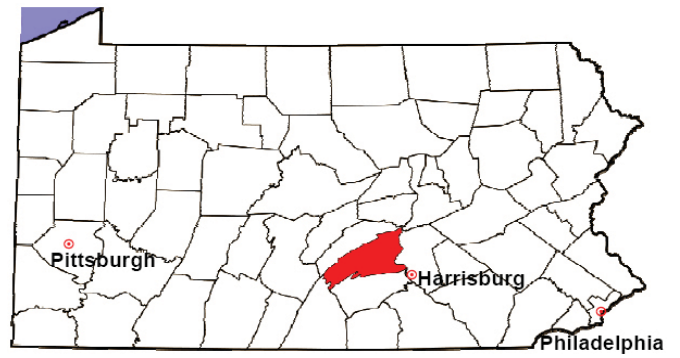
2008 Divorce	No. of Petitions	%
Cases Pending 1/1/08	277	
New Cases Filed in '08	149	
Cases Available for Processing	426	
Processed By:		
Contested Before a Judge	11	7.4%
Contested Before a Master	8	5.4%
Uncontested	123	82.6%
Other	7	4.7%
Cases Processed	149	100.0%
Cases Pending 12/31/08	277	

Divorce New Cases Filed, 1998-2008



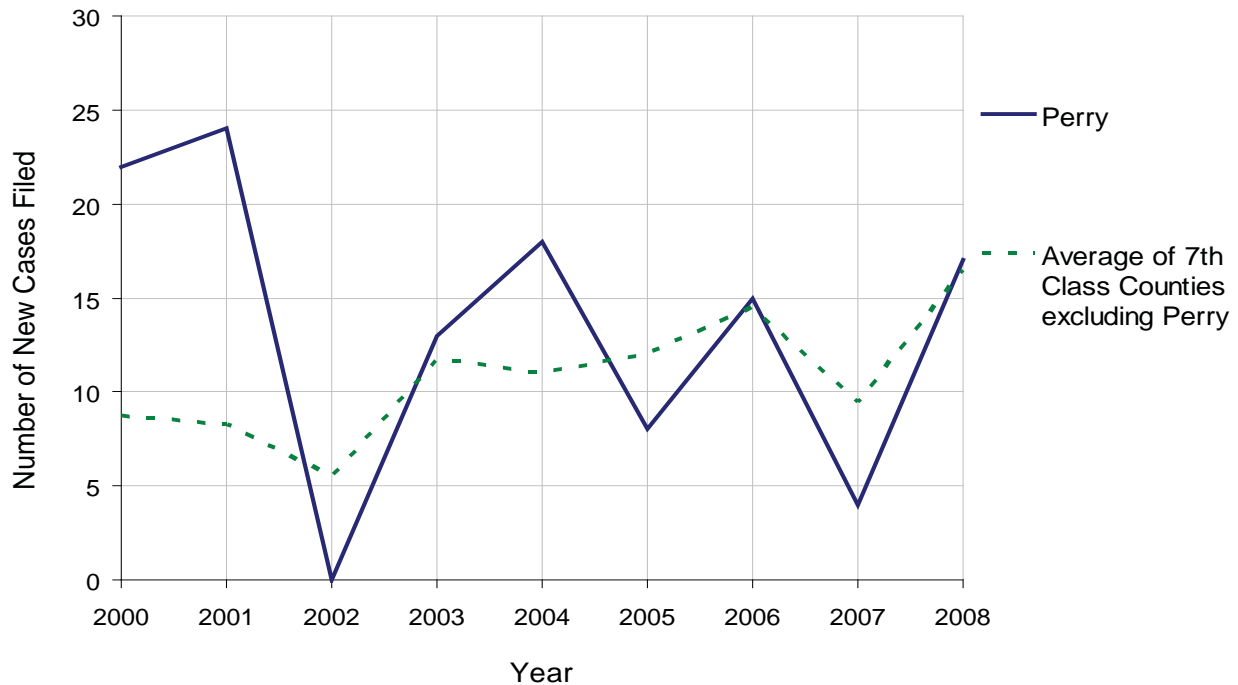
PERRY COUNTY

2008 Population Estimate: 45,185
 Class of County: 7th
 No. of Common Pleas Court Judgeships: 2
 (Juniata and Perry combined)



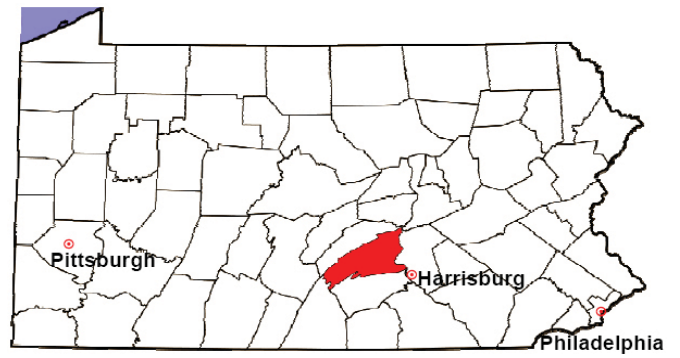
2008 Juvenile Dependency Abuse/Neglect	No. of Petitions	%
Cases Pending 1/1/08	0	
New Cases Filed in '08	17	
Cases Available for Processing	17	
Processed By:		
Judge	9	52.9%
Non-Judicial Officer	0	0.0%
Other	8	47.1%
Cases Processed	17	100.0%
Cases Pending 12/31/08	0	

Abuse/Neglect New Cases Filed, 2000-2008



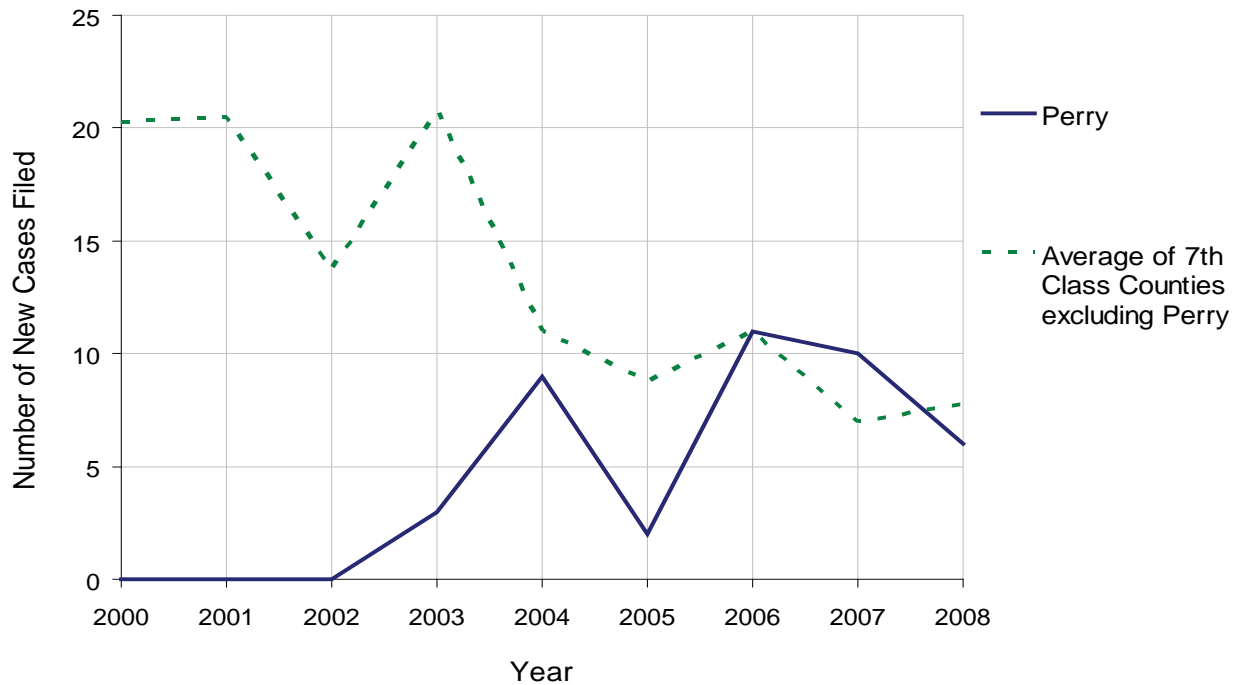
PERRY COUNTY

2008 Population Estimate: 45,185
 Class of County: 7th
 No. of Common Pleas Court Judgeships: 2
 (Juniata and Perry combined)



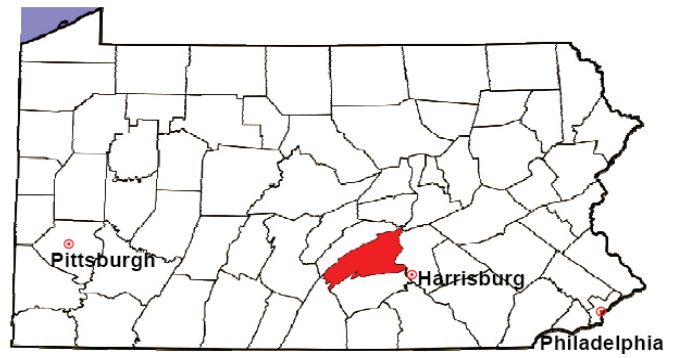
2008 Juvenile Dependency Status Offenses	No. of Petitions	%
Cases Pending 1/1/08	0	
New Cases Filed in '08	6	
Cases Available for Processing	6	
Processed By:		
Judge	6	100.0%
Non-Judicial Officer	0	0.0%
Other	0	0.0%
Cases Processed	6	100.0%
Cases Pending 12/31/08	0	

Status Offenses New Cases Filed, 2000-2008



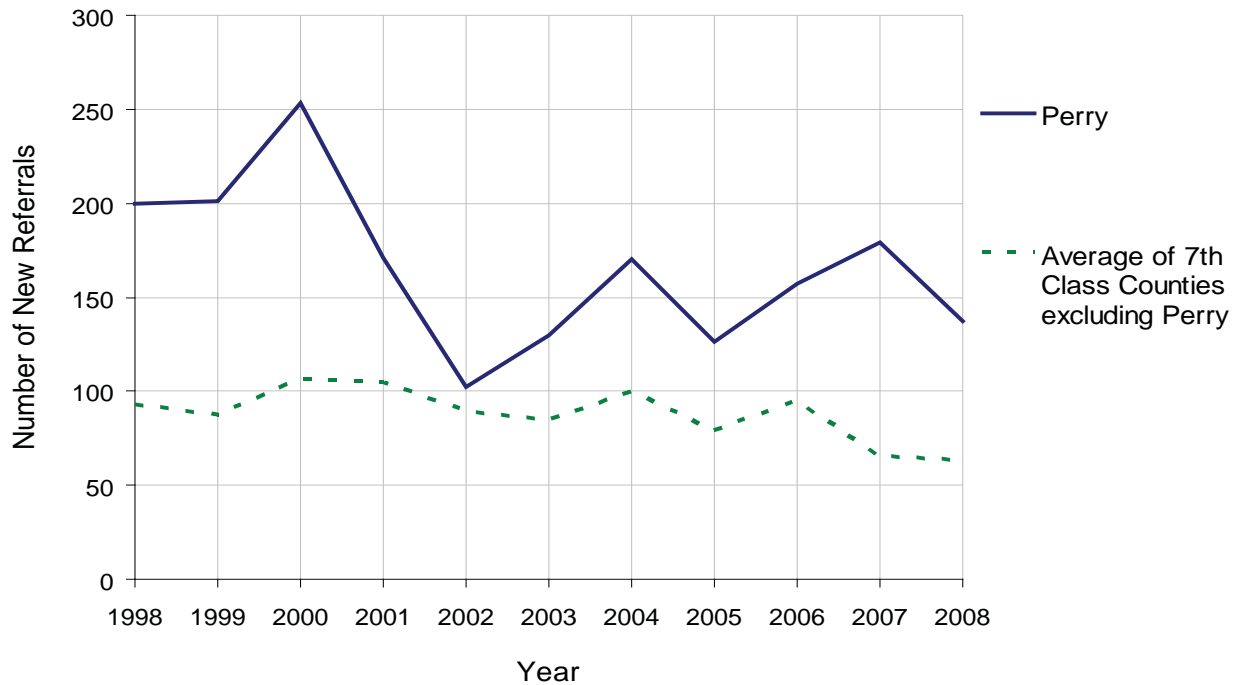
PERRY COUNTY

2008 Population Estimate: 45,185
 Class of County: 7th
 No. of Common Pleas Court Judgeships: 2
 (Juniata and Perry combined)



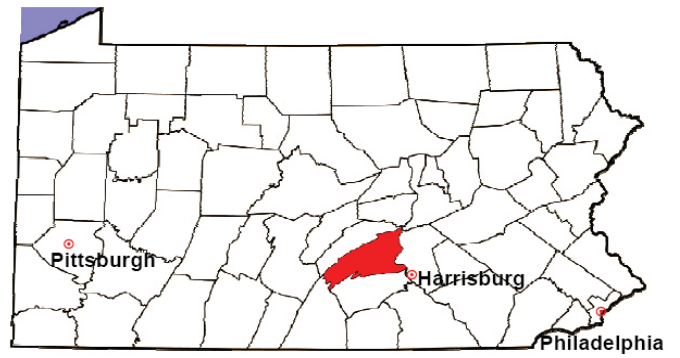
2008 Juvenile Delinquency	No. of Referrals	%
Cases Pending 1/1/08	62	
New Referrals in '08	137	
Cases Available for Processing	199	
Processed By:		
Judge	78	50.0%
Non-Judicial Officer	54	34.6%
Other	24	15.4%
Cases Processed	156	100.0%
Cases Pending 12/31/08	43	

Juvenile Delinquency New Referrals, 1998-2008



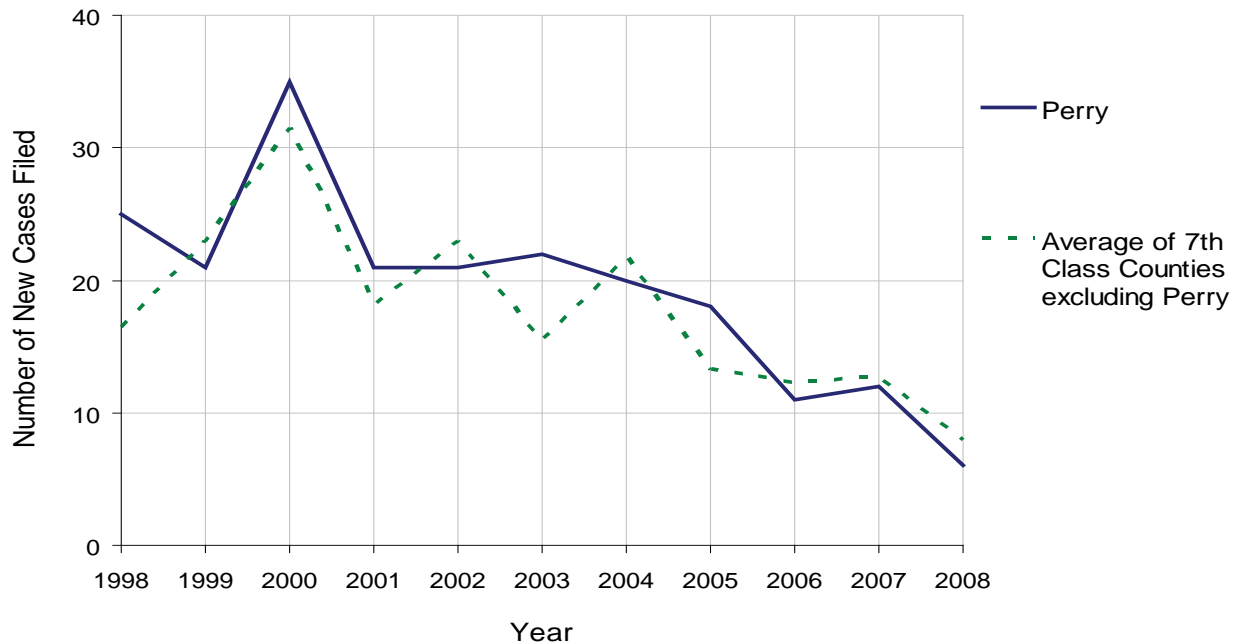
PERRY COUNTY

2008 Population Estimate: 45,185
 Class of County: 7th
 No. of Common Pleas Court Judgeships: 2
 (Juniata and Perry combined)



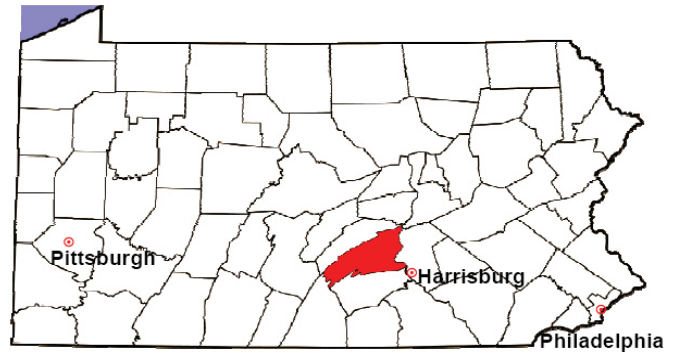
2008 Accounts	No. of Accounts	%
Cases Pending 1/1/08	0	
New Cases Filed in '08	6	
Cases Available for Processing	6	
Processed By:		
Contested before a Judge	0	0.0%
Contested before a Non-Judicial Officer	0	0.0%
Uncontested	5	100.0%
Other	0	0.0%
Cases Processed	5	100.0%
Cases Pending 12/31/08	1	

Accounts New Cases Filed, 1998-2008



PERRY COUNTY

2008 Population Estimate: 45,185
 Class of County: 7th
 No. of Common Pleas Court Judgeships: 2
 (Juniata and Perry combined)

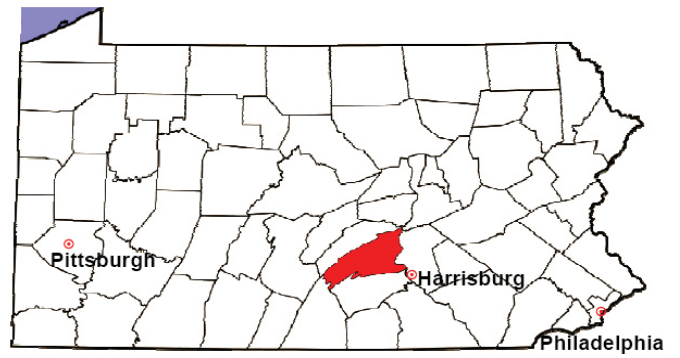


2008 Adoptions		No. of Cases	%
Cases Pending 1/1/08		2	
New Cases Filed in '08		27	
Cases Available for Processing		29	
Processed By:			
Contested before a Judge	Granted	0	0.0%
	Denied	0	0.0%
Uncontested	Granted	26	100.0%
	Denied	0	0.0%
Other		0	0.0%
Cases Processed		26	100.0%
Cases Pending 12/31/08		3	

Note: Prior to 2008, each petition was counted as one new case, regardless of the number of children listed on the petition. Starting in 2008, each child listed on a petition is counted as a separate case. Therefore, statistics for 2008 should not be compared with those for previous years.

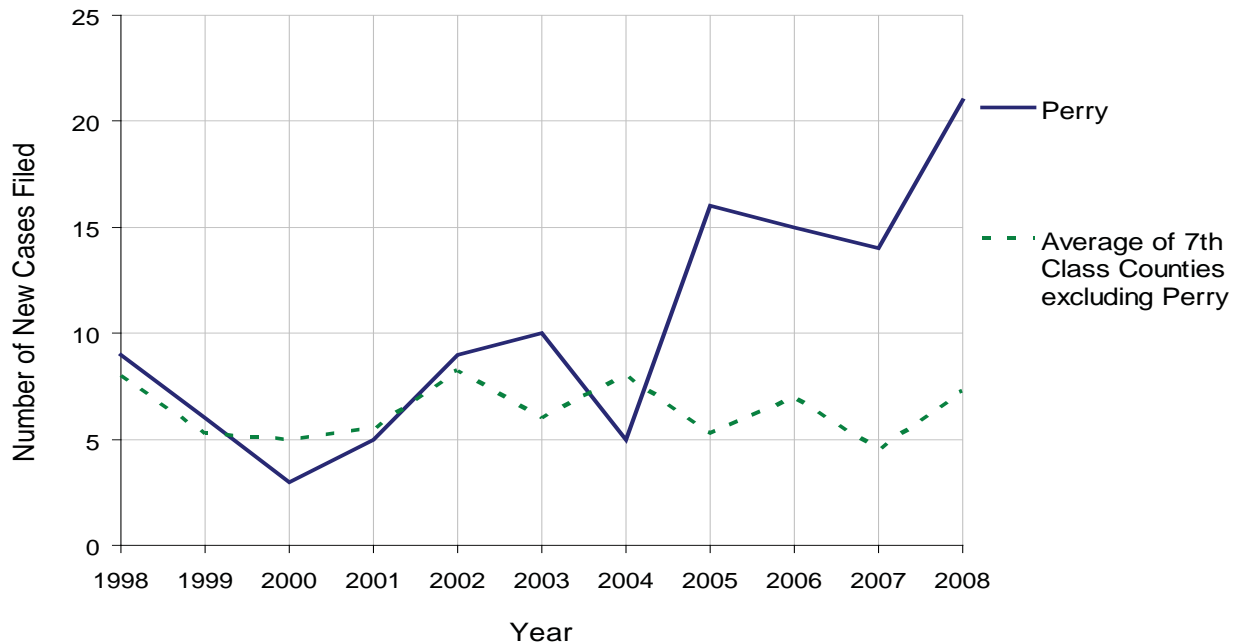
PERRY COUNTY

2008 Population Estimate: 45,185
 Class of County: 7th
 No. of Common Pleas Court Judgeships: 2
 (Juniata and Perry combined)



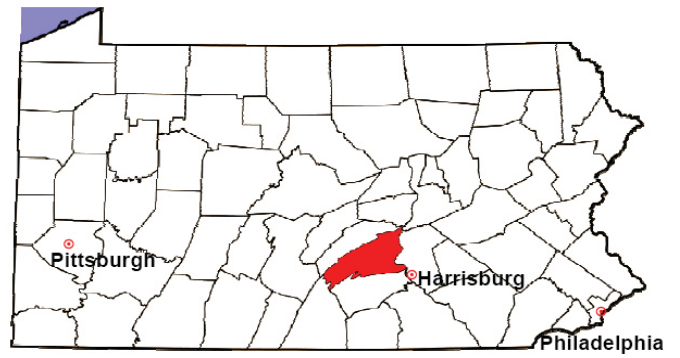
2008 Relinquishments/Terminations	No. of Petitions	%
Cases Pending 1/1/08	4	
New Cases Filed in '08	21	
Cases Available for Processing	25	
Processed By:		
Contested before a Judge	1	4.5%
Uncontested	20	90.9%
Other	1	4.5%
Cases Processed	22	100.0%
Cases Pending 12/31/08	3	

Relinquishments/Terminations New Cases Filed, 1998-2008



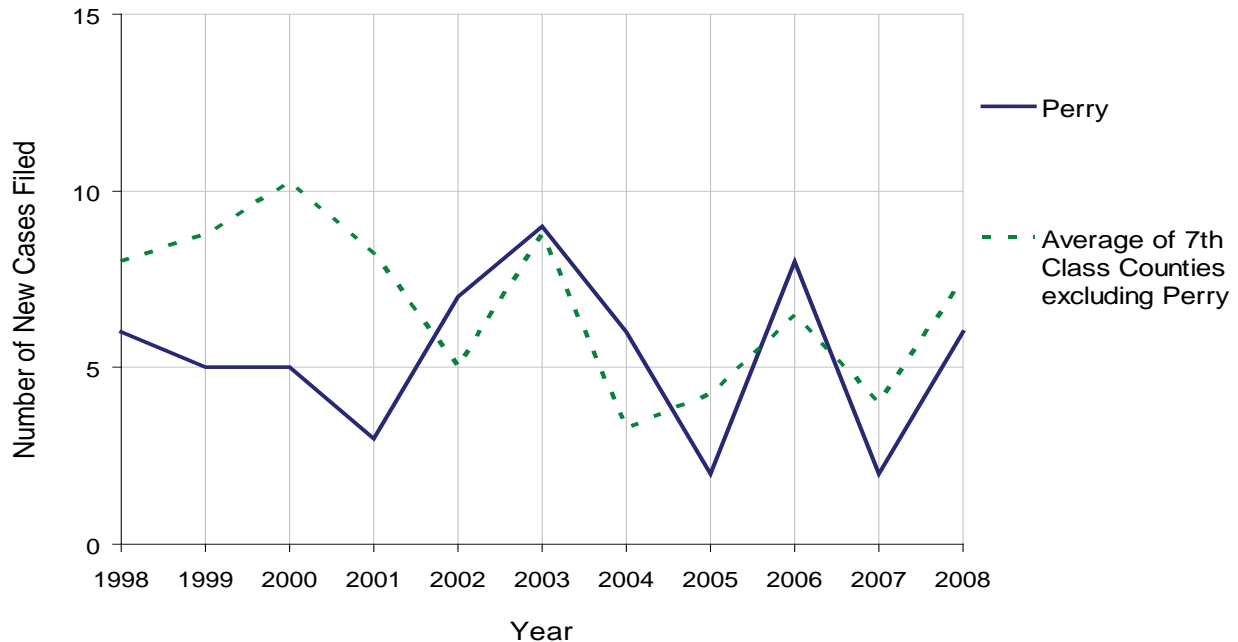
PERRY COUNTY

2008 Population Estimate: 45,185
 Class of County: 7th
 No. of Common Pleas Court Judgeships: 2
 (Juniata and Perry combined)



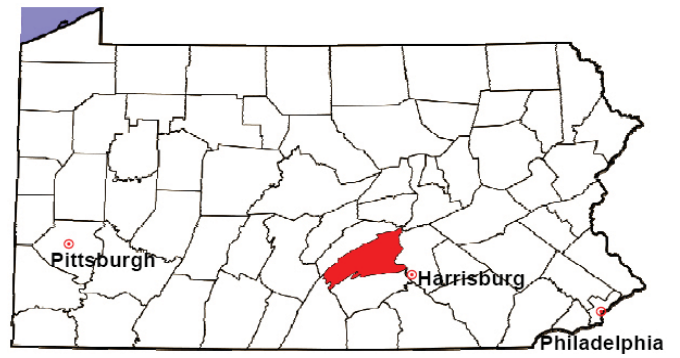
2008 Appointment of Guardians	No. of Petitions	%
Cases Pending 1/1/08	0	
New Cases Filed in '08	6	
Cases Available for Processing	6	
Processed By:		
Contested before a Judge	0	0.0%
Uncontested	4	66.7%
Other	2	33.3%
Cases Processed	6	100.0%
Cases Pending 12/31/08	0	

Appointment of Guardians New Cases Filed, 1998-2008



PERRY COUNTY

2008 Population Estimate: 45,185
 Class of County: 7th
 No. of Common Pleas Court Judgeships: 2
 (Juniata and Perry combined)



2008 Jury Activity & Performance Measures		
A. Juror Days	859	
B. Number Sent to Voir Dire	1,055	
Voir Dire Attendance Rate $(B/A * 100)$		122.8%
C. Number of Voir Dires Started	30	
Juror Days Per Voir Dire Starts (A/C)		29
D. Number of Jurors Selected	507	
Juror Selection Rate $(D/B * 100)$		48.1%
E. Number of Jury Trials Started	22	
Juror Days Per Trial Starts (A/E)		39
Number of Voir Dires Not Resulting in Trial $(C-E)$		8
Percent Voir Dires Not Resulting in Trial $(C-E)/C * 100$		26.7%
F. Pool Days	11	
G. Zero Panel Days	1	
Percent Zero Panel Days $(G/F * 100)$		9.1%
H. Total Juror Fees Incurred	\$15,484	
Average Juror Fees Per Trial (H/E)		\$704

Average Juror Fees Per Trial, 1998-2008

