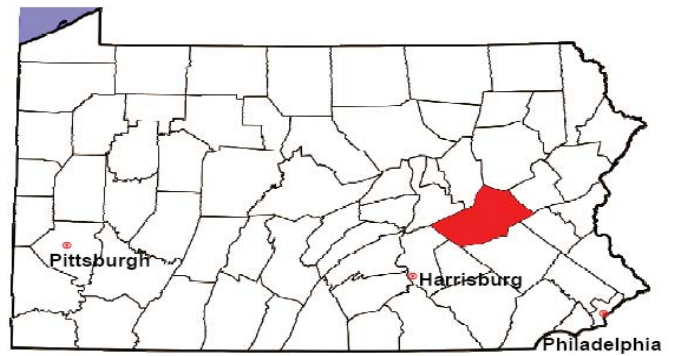


SCHUYLKILL COUNTY

2008 Population Estimate: 147,254

Class of County: 4th

No. of Common Pleas Court Judgeships: 6

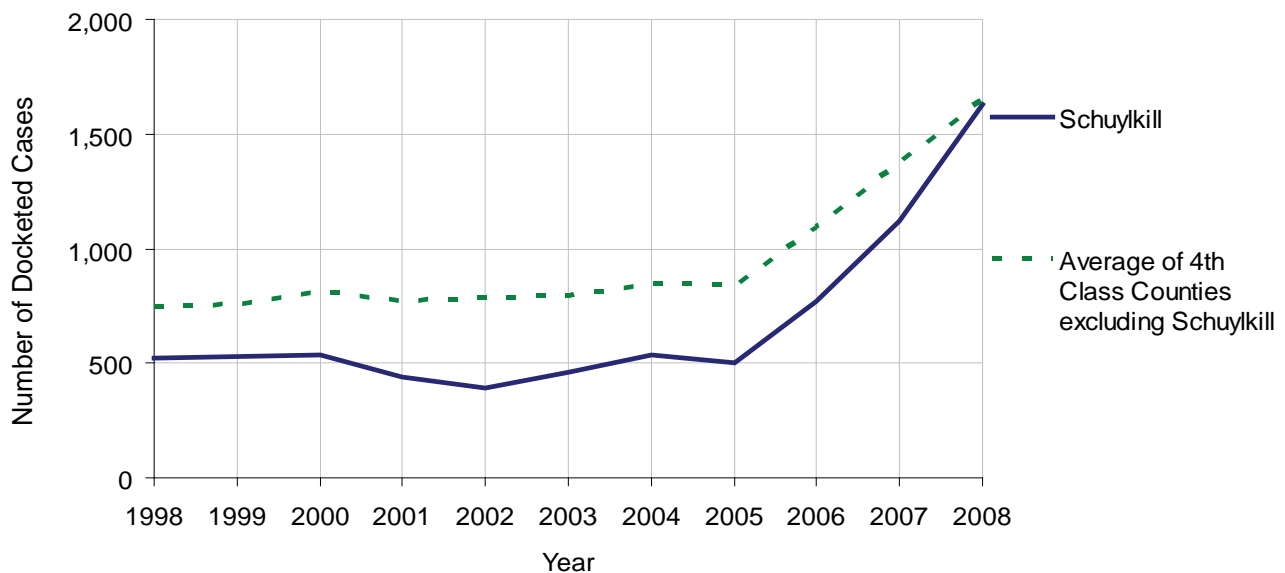


2008 Civil		Civil Action		
Docketed Cases		1,626 ^(o)		
Arbitrated Cases		56		
Trial-Ready Cases:		Civil Action	Other	Total
Cases Pending 1/1/08		25	0	25
Became Trial Ready in '08		73	0	73
Restored to Trial List		6	0	6
Appeals from Arbitration		8	0	8
Cases Available for Trial		112	0	112
Disposed By:				
Settlement		22	0	22
Non-Jury Trial		10	0	10
Jury Trial		6	0	6
Stricken from Trial List		41	0	41
Other		6	0	6
Cases Disposed		85	0	85
Cases Pending 12/31/08		27	0	27

Age of Trial-Ready Cases as of 12/31/08 (Civil Action Only)		
0-6 months	23	85%
7-12 months	3	11%
13-18 months	1	4%
19-24 months	0	0%
25-30 months	0	0%
31-36 months	0	0%
Over 36 months	0	0%
Total	27	100%

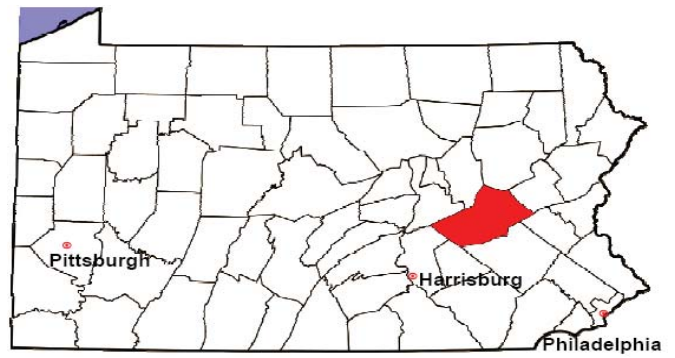
(O) - Overinclusive, includes mortgage foreclosures, paternity, mandamus, replevin, and case types that are categorized as "Other."

Docketed Cases, 1998-2008



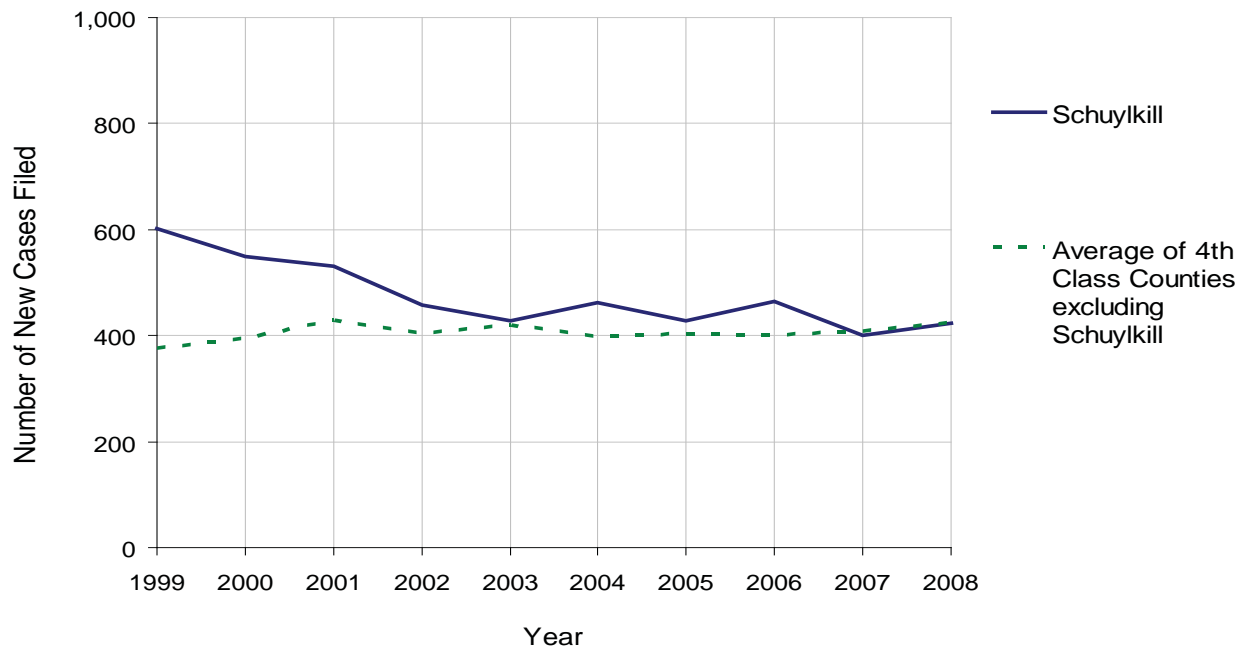
SCHUYLKILL COUNTY

2008 Population Estimate: 147,254
 Class of County: 4th
 No. of Common Pleas Court Judgeships: 6



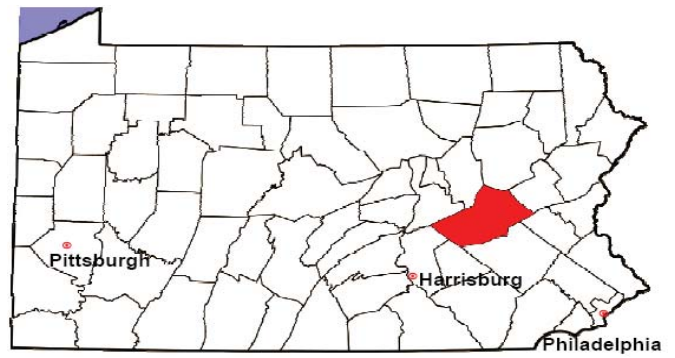
2008 Protection From Abuse	No. of Petitions	%
Cases Pending 1/1/08	55	
New Cases Filed in '08	424	
Cases Available for Processing	479	
Processed By:		
Final Order After Hearing	118	27.1%
Final Order by Stipulation or Agreement	120	27.5%
Dismissal	121	27.8%
Withdrawal	70	16.1%
Other	7	1.6%
Cases Processed	436	100.0%
Cases Pending 12/31/08	43	

PFA New Cases Filed, 1999-2008



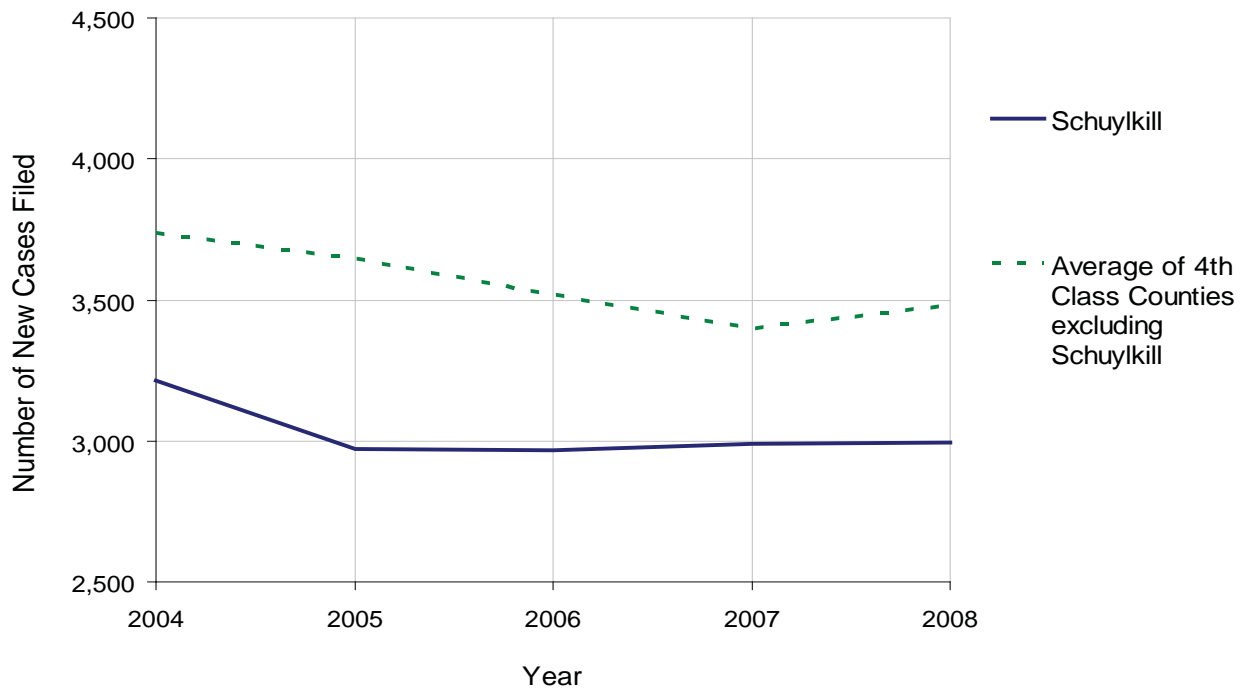
SCHUYLKILL COUNTY

2008 Population Estimate: 147,254
 Class of County: 4th
 No. of Common Pleas Court Judgeships: 6



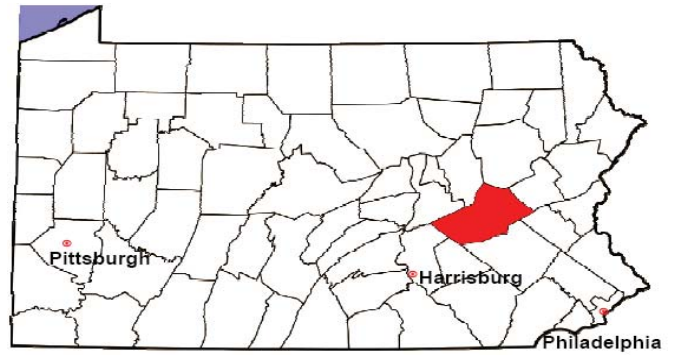
2008 Spousal & Child Support	No. of Petitions	%
Cases Pending 1/1/08	497	
New Cases Filed in '08	2,992	
Dockets Transferred In (+)	39	
Dockets Transferred Out (-)	40	
Cases Available for Processing	3,488	
Processed By:		
Judge	0	0.0%
Intake Officer	2,891	98.7%
Hearing Officer	39	1.3%
Other	0	0.0%
Cases Processed	2,930	100.0%
Cases Pending 12/31/08	558	

Spousal & Child Support New Cases Filed, 1998-2008



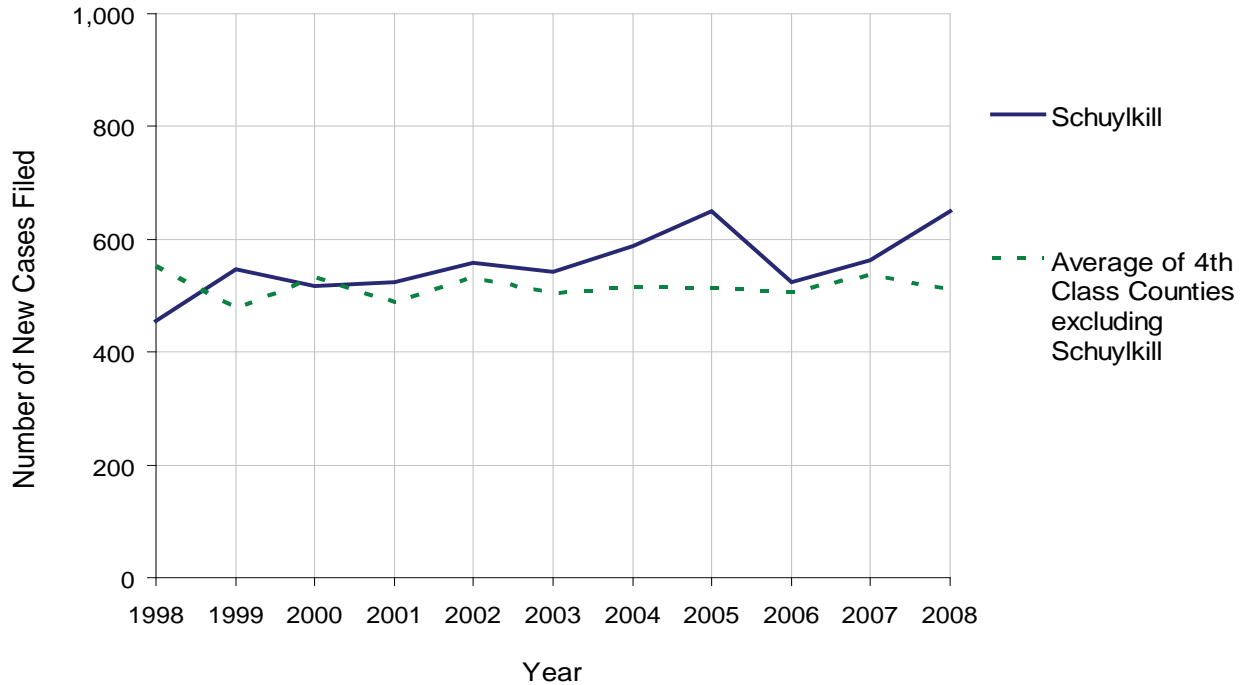
SCHUYLKILL COUNTY

2008 Population Estimate: 147,254
 Class of County: 4th
 No. of Common Pleas Court Judgeships: 6



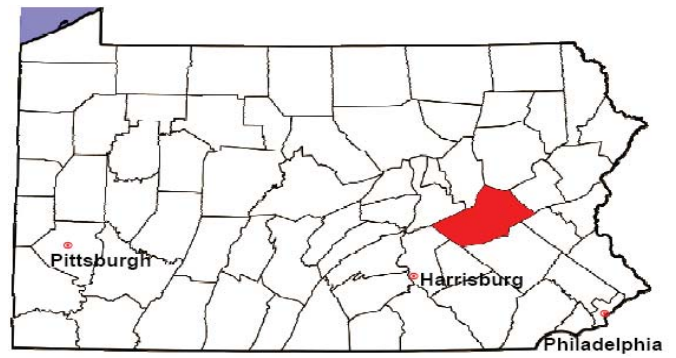
2008 Custody/Partial Custody/Visitation	No. of Petitions	%
Cases Pending 1/1/08	87	
New Cases Filed in '08	649	
Cases Available for Processing	736	
Processed By:		
Judge	302	43.6%
Non-Judicial Officer	381	55.1%
Other	9	1.3%
Cases Processed	692	100.0%
Cases Pending 12/31/08	44	

Custody/Partial Custody/Visitation New Cases Filed
 1998-2008



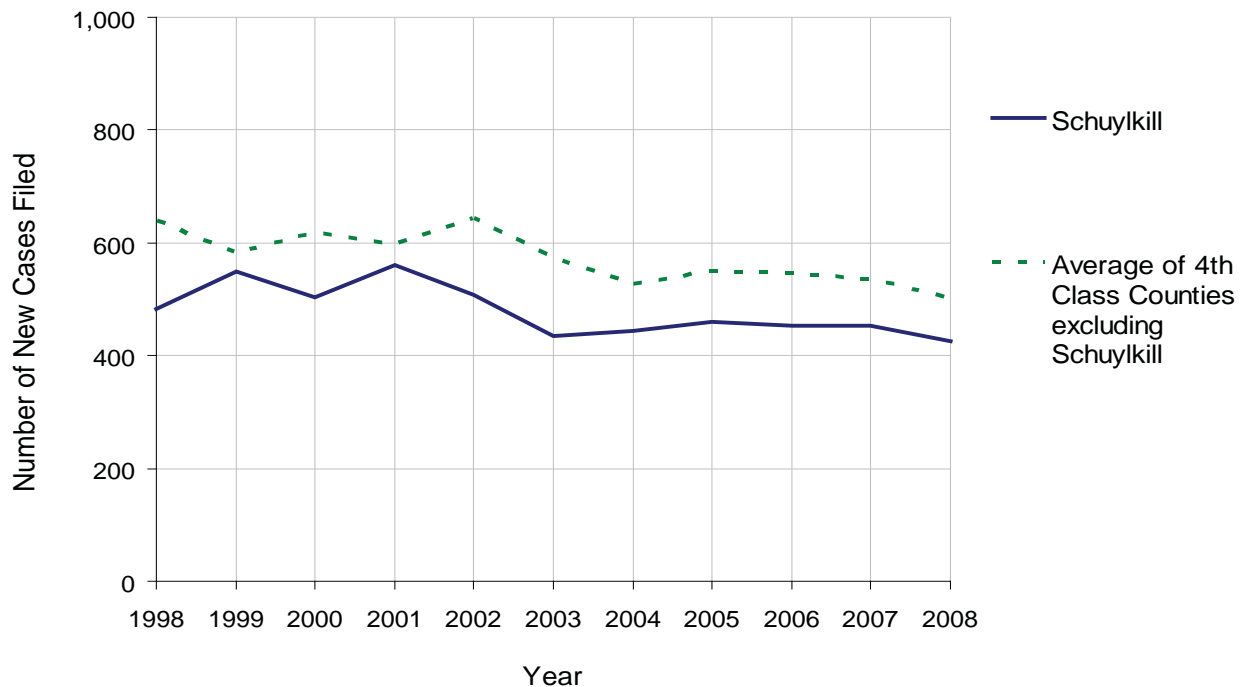
SCHUYLKILL COUNTY

2008 Population Estimate: 147,254
 Class of County: 4th
 No. of Common Pleas Court Judgeships: 6



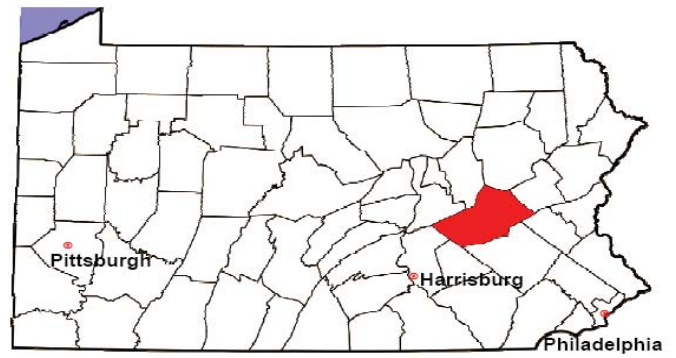
2008 Divorce	No. of Petitions	%
Cases Pending 1/1/08	834	
New Cases Filed in '08	426	
Cases Available for Processing	1,260	
Processed By:		
Contested Before a Judge	12	2.8%
Contested Before a Master	29	6.8%
Uncontested	312	73.6%
Other	71	16.7%
Cases Processed	424	100.0%
Cases Pending 12/31/08	836	

Divorce New Cases Filed, 1998-2008



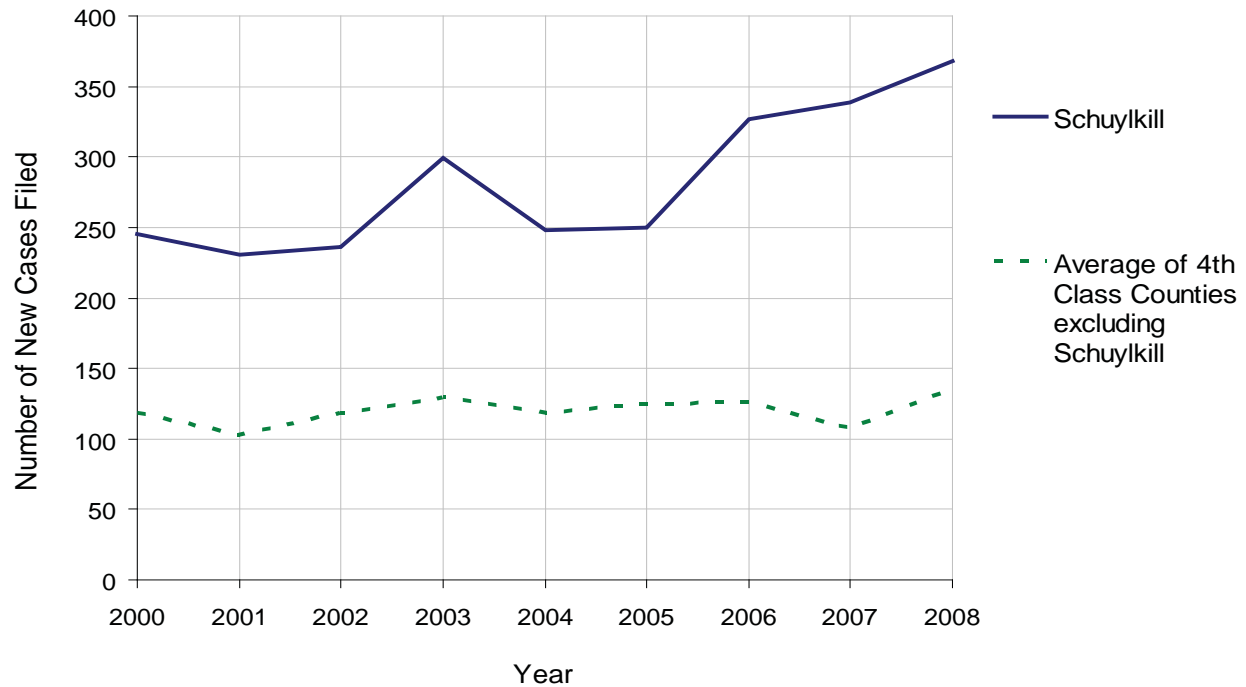
SCHUYLKILL COUNTY

2008 Population Estimate: 147,254
 Class of County: 4th
 No. of Common Pleas Court Judgeships: 6



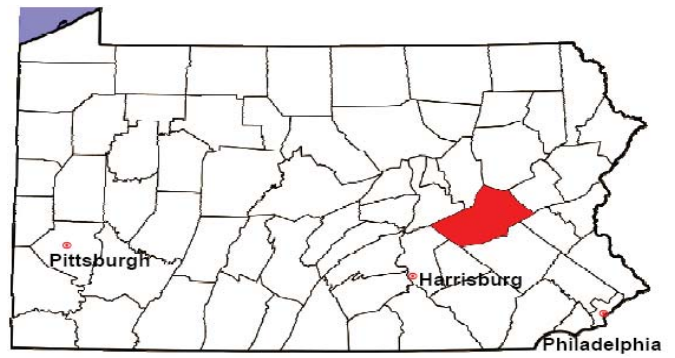
2008 Juvenile Dependency Abuse/Neglect	No. of Petitions	%
Cases Pending 1/1/08	10	
New Cases Filed in '08	368	
Cases Available for Processing	378	
Processed By:		
Judge	300	82.2%
Non-Judicial Officer	0	0.0%
Other	65	17.8%
Cases Processed	365	100.0%
Cases Pending 12/31/08	13	

Abuse/Neglect New Cases Filed, 2000-2008



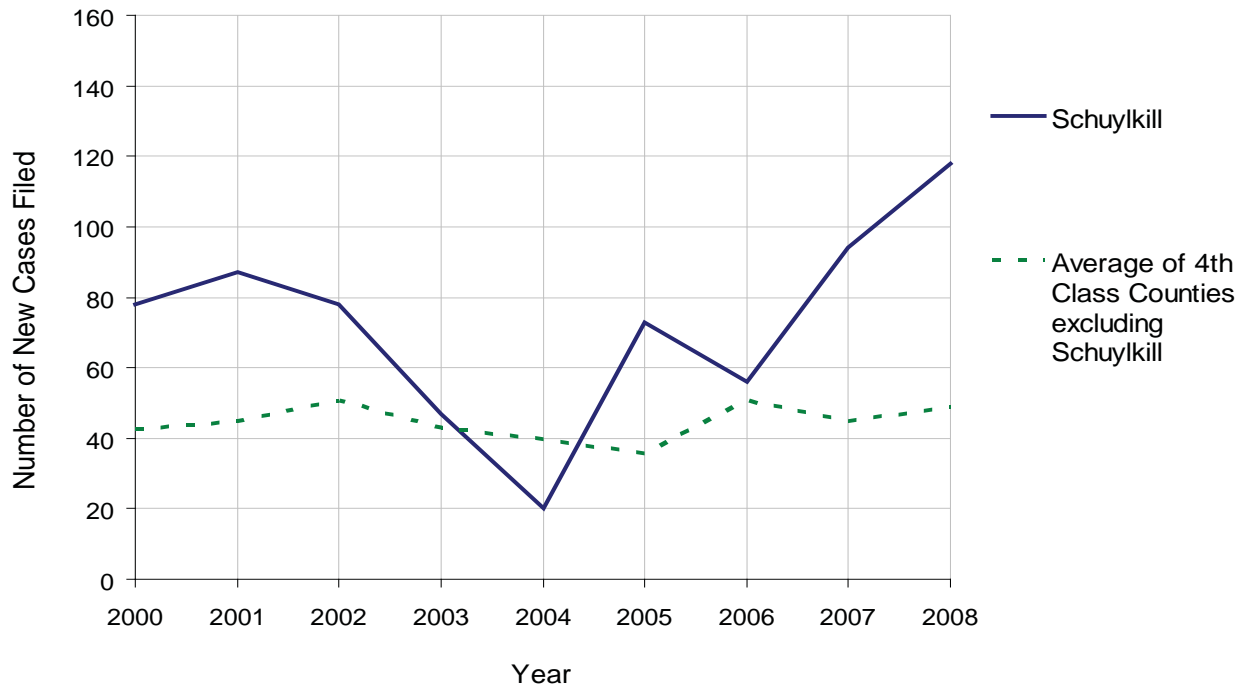
SCHUYLKILL COUNTY

2008 Population Estimate: 147,254
 Class of County: 4th
 No. of Common Pleas Court Judgeships: 6



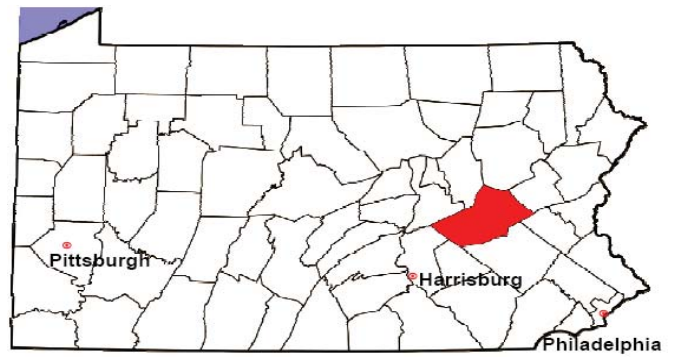
2008 Juvenile Dependency Status Offenses	No. of Petitions	%
Cases Pending 1/1/08	4	
New Cases Filed in '08	118	
Cases Available for Processing	122	
Processed By:		
Judge	104	92.0%
Non-Judicial Officer	0	0.0%
Other	9	8.0%
Cases Processed	113	100.0%
Cases Pending 12/31/08	9	

Status Offenses New Cases Filed, 2000-2008



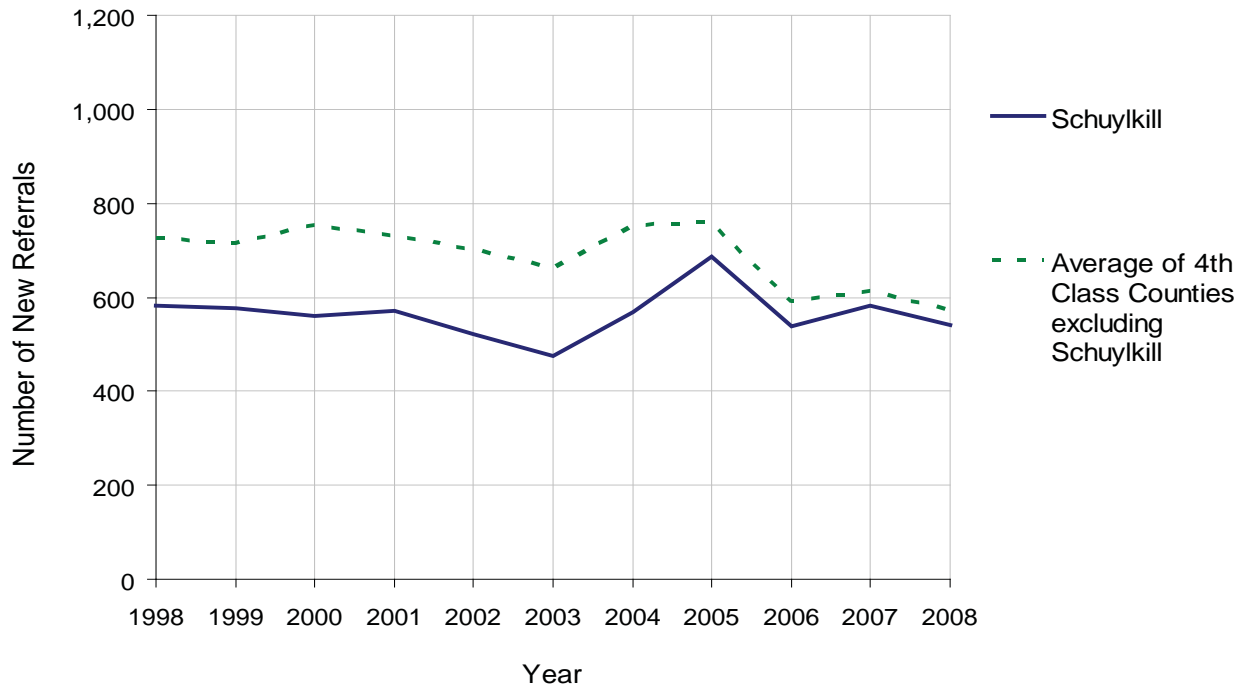
SCHUYLKILL COUNTY

2008 Population Estimate: 147,254
 Class of County: 4th
 No. of Common Pleas Court Judgeships: 6



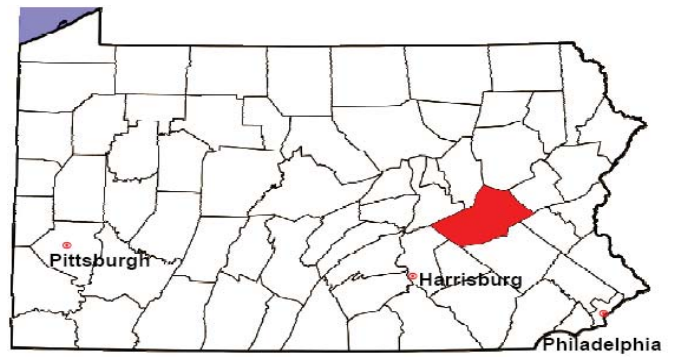
2008 Juvenile Delinquency	No. of Referrals	%
Cases Pending 1/1/08	66	
New Referrals in '08	540	
Cases Available for Processing	606	
Processed By:		
Judge	220	39.0%
Non-Judicial Officer	343	60.8%
Other	1	0.2%
Cases Processed	564	100.0%
Cases Pending 12/31/08	42	

Juvenile Delinquency New Referrals, 1998-2008



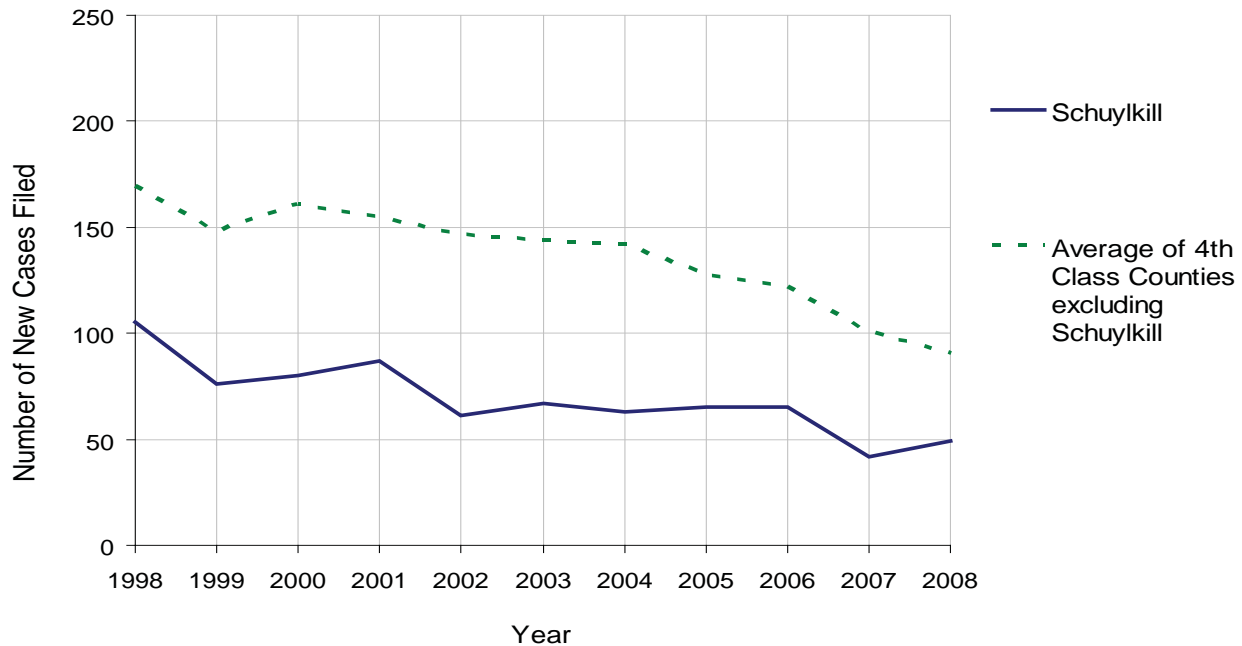
SCHUYLKILL COUNTY

2008 Population Estimate: 147,254
 Class of County: 4th
 No. of Common Pleas Court Judgeships: 6



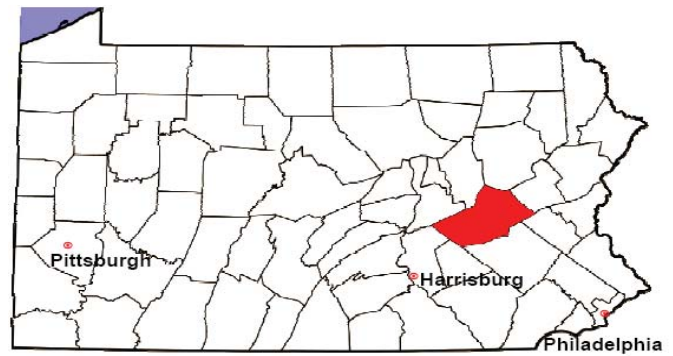
2008 Accounts	No. of Accounts	%
Cases Pending 1/1/08	5	
New Cases Filed in '08	49	
Cases Available for Processing	54	
Processed By:		
Contested before a Judge	2	3.9%
Contested before a Non-Judicial Officer	0	0.0%
Uncontested	46	90.2%
Other	3	5.9%
Cases Processed	51	100.0%
Cases Pending 12/31/08	3	

Accounts New Cases Filed, 1998-2008



SCHUYLKILL COUNTY

2008 Population Estimate: 147,254
 Class of County: 4th
 No. of Common Pleas Court Judgeships: 6

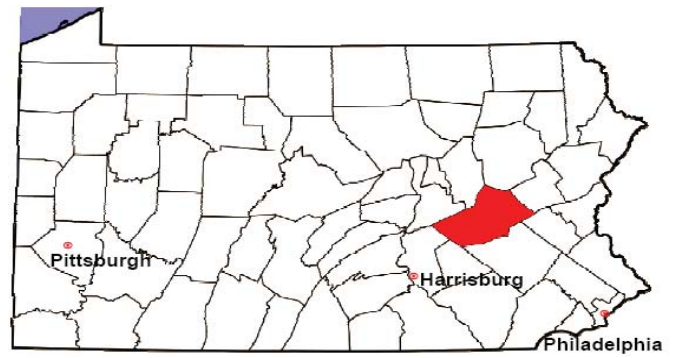


2008 Adoptions		No. of Cases	%
Cases Pending 1/1/08		7	
New Cases Filed in '08		36	
Cases Available for Processing		43	
Processed By:			
Contested before a Judge	Granted	0	0.0%
	Denied	0	0.0%
Uncontested	Granted	36	97.3%
	Denied	0	0.0%
Other		1	2.7%
Cases Processed		37	100.0%
Cases Pending 12/31/08		6	

Note: Prior to 2008, each petition was counted as one new case, regardless of the number of children listed on the petition. Starting in 2008, each child listed on a petition is counted as a separate case. Therefore, statistics for 2008 should not be compared with those for previous years.

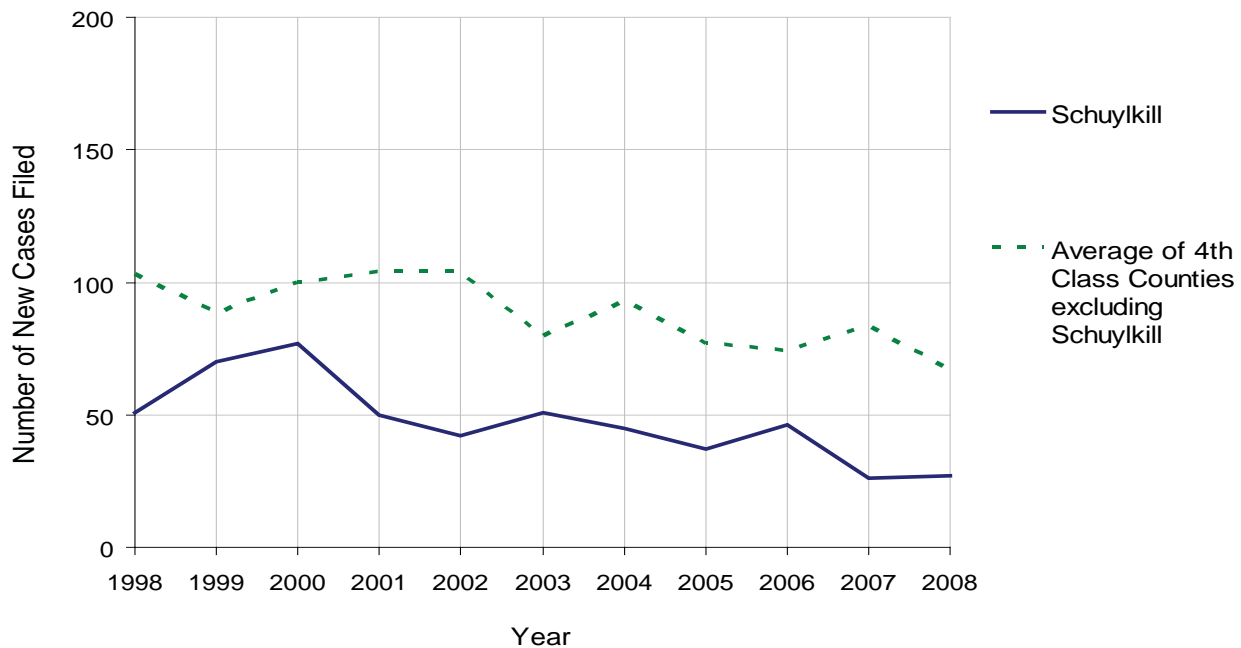
SCHUYLKILL COUNTY

2008 Population Estimate: 147,254
 Class of County: 4th
 No. of Common Pleas Court Judgeships: 6



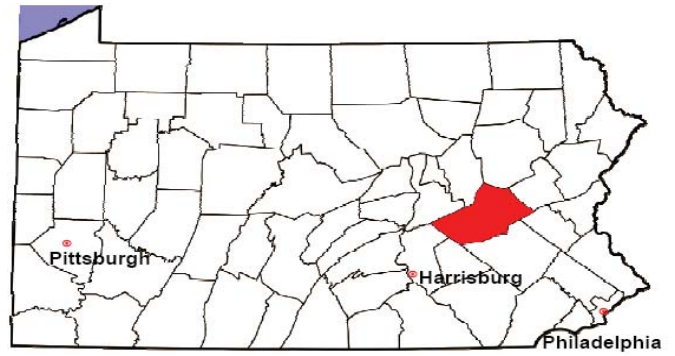
2008 Relinquishments/Terminations	No. of Petitions	%
Cases Pending 1/1/08	7	
New Cases Filed in '08	27	
Cases Available for Processing	34	
Processed By:		
Contested before a Judge	1	3.1%
Uncontested	30	93.8%
Other	1	3.1%
Cases Processed	32	100.0%
Cases Pending 12/31/08	2	

Relinquishments/Terminations New Cases Filed, 1998-2008



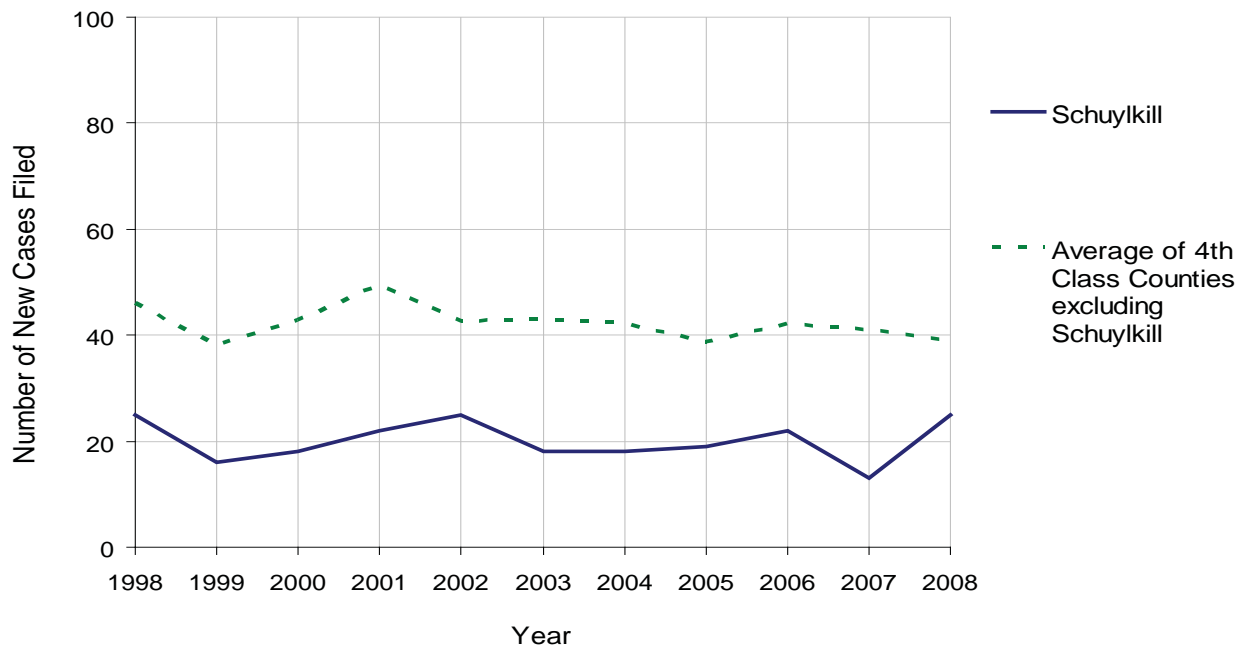
SCHUYLKILL COUNTY

2008 Population Estimate: 147,254
 Class of County: 4th
 No. of Common Pleas Court Judgeships: 6



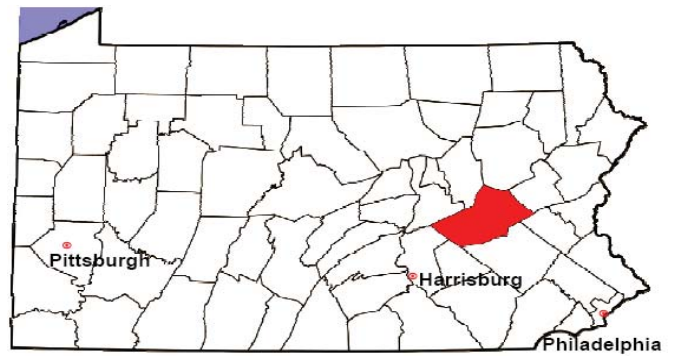
2008 Appointment of Guardians	No. of Petitions	%
Cases Pending 1/1/08	1	
New Cases Filed in '08	25	
Cases Available for Processing	26	
Processed By:		
Contested before a Judge	0	0.0%
Uncontested	16	84.2%
Other	3	15.8%
Cases Processed	19	100.0%
Cases Pending 12/31/08	7	

Appointment of Guardians New Cases Filed, 1998-2008



SCHUYLKILL COUNTY

2008 Population Estimate: 147,254
 Class of County: 4th
 No. of Common Pleas Court Judgeships: 6



2008 Jury Activity & Performance Measures		
A. Juror Days	2,929	
B. Number Sent to Voir Dire	4,082	
Voir Dire Attendance Rate $(B/A * 100)$		139.4%
C. Number of Voir Dires Started	111	
Juror Days Per Voir Dire Starts (A/C)		26
D. Number of Jurors Selected	1,569	
Juror Selection Rate $(D/B * 100)$		38.4%
E. Number of Jury Trials Started	54	
Juror Days Per Trial Starts (A/E)		54
Number of Voir Dires Not Resulting in Trial $(C-E)$		57
Percent Voir Dires Not Resulting in Trial $(C-E)/C * 100$		51.4%
F. Pool Days	21	
G. Zero Panel Days	0	
Percent Zero Panel Days $(G/F * 100)$		0.0%
H. Total Juror Fees Incurred	\$52,351	
Average Juror Fees Per Trial (H/E)		\$969

Average Juror Fees Per Trial, 1998-2008

