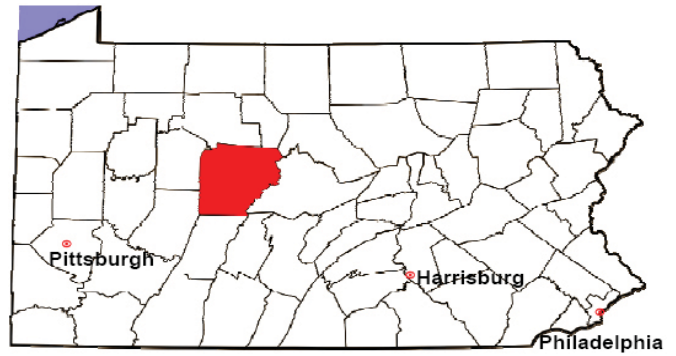


CLEARFIELD COUNTY

2008 Population Estimate: 82,896

Class of County: 6th

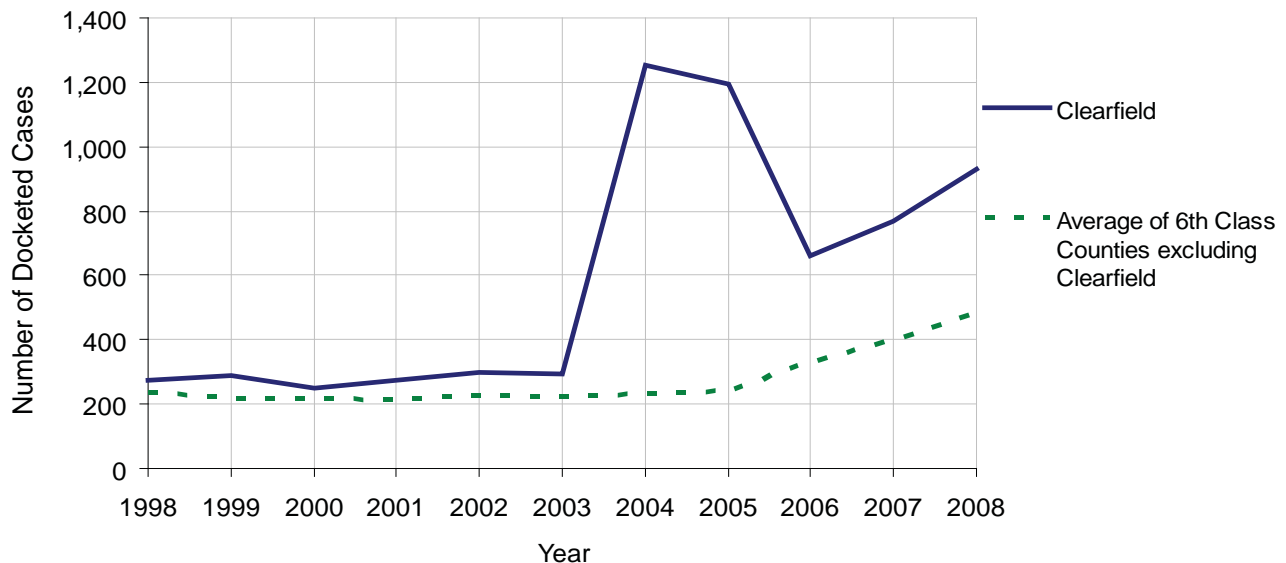
No. of Common Pleas Court Judgeships: 2



2008 Civil		Civil Action		
Docketed Cases		932		
Arbitrated Cases		14		
Trial-Ready Cases:		Civil Action	Other	Total
Cases Pending 1/1/08		46	0	46
Became Trial Ready in '08		34	0	34
Restored to Trial List		2	0	2
Appeals from Arbitration		2	0	2
Cases Available for Trial		84	0	84
Disposed By:				
Settlement		29	0	29
Non-Jury Trial		4	0	4
Jury Trial		5	0	5
Stricken from Trial List		5	0	5
Other		19	0	19
Cases Disposed		62	0	62
Cases Pending 12/31/08		22	0	22

Age of Trial-Ready Cases as of 12/31/08 (Civil Action Only)		
0-6 months	20	91%
7-12 months	2	9%
13-18 months	0	0%
19-24 months	0	0%
25-30 months	0	0%
31-36 months	0	0%
Over 36 months	0	0%
Total	22	100%

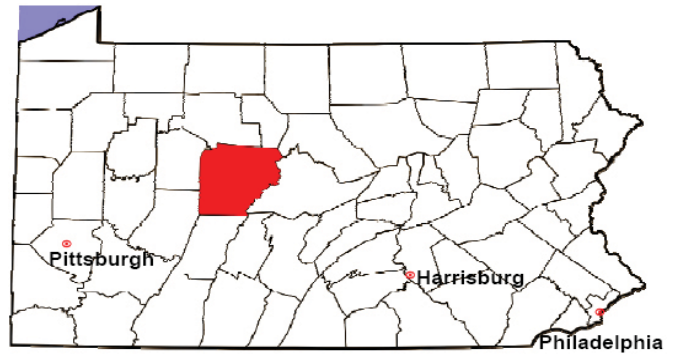
Docketed Cases, 1998-2008



Note: A sharp increase or decrease may reflect changes in practice or counting methods.

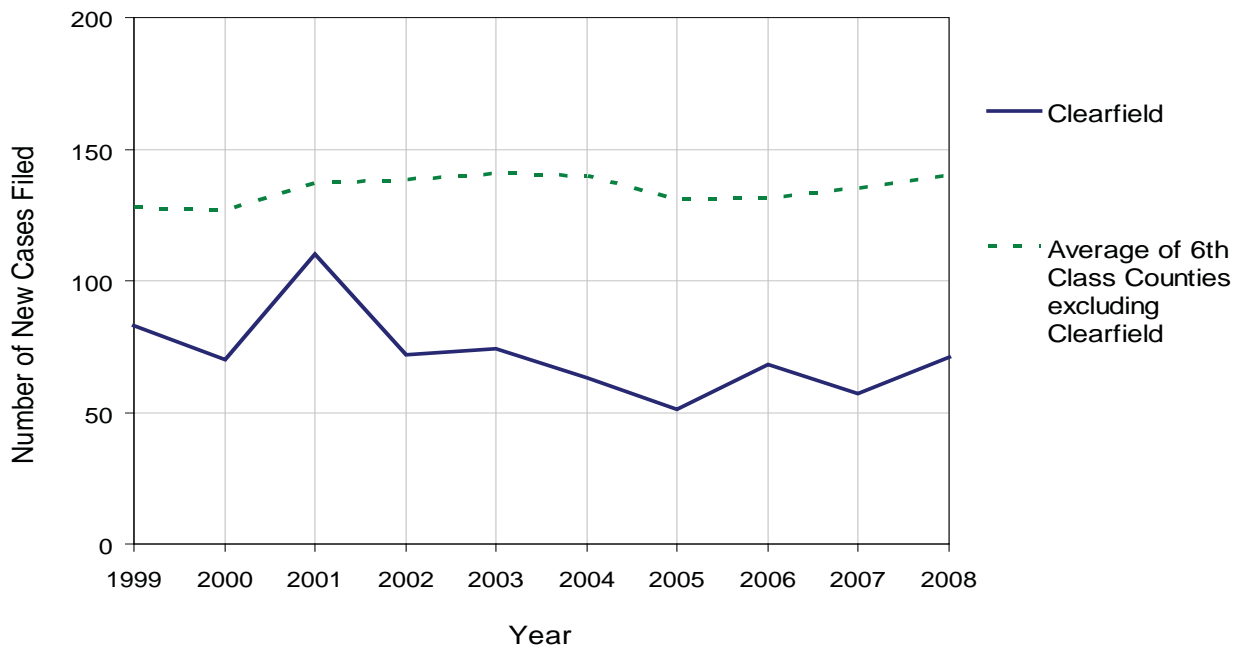
CLEARFIELD COUNTY

2008 Population Estimate: 82,896
 Class of County: 6th
 No. of Common Pleas Court Judgeships: 2



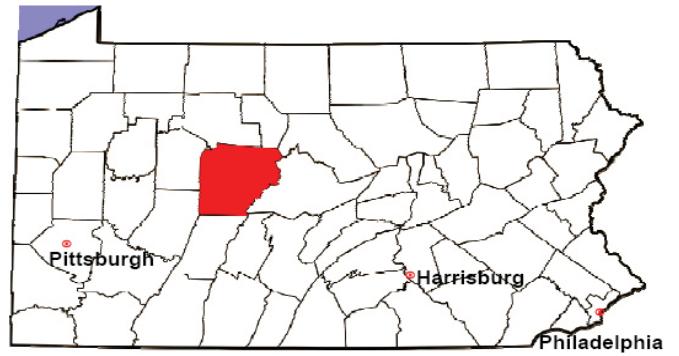
2008 Protection From Abuse	No. of Petitions	%
Cases Pending 1/1/08	6	
New Cases Filed in '08	71	
Cases Available for Processing	77	
Processed By:		
Final Order After Hearing	27	36.0%
Final Order by Stipulation or Agreement	15	20.0%
Dismissal	30	40.0%
Withdrawal	2	2.7%
Other	1	1.3%
Cases Processed	75	100.0%
Cases Pending 12/31/08	2	

PFA New Cases Filed, 1999-2008



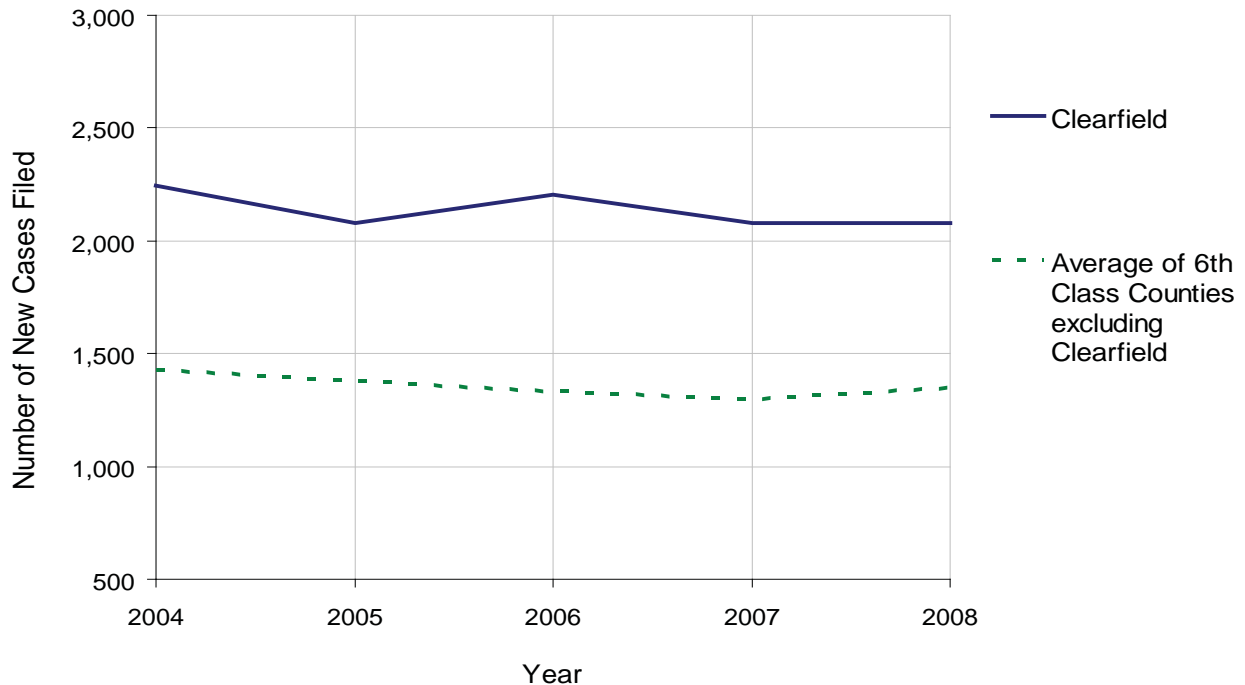
CLEARFIELD COUNTY

2008 Population Estimate: 82,896
 Class of County: 6th
 No. of Common Pleas Court Judgeships: 2



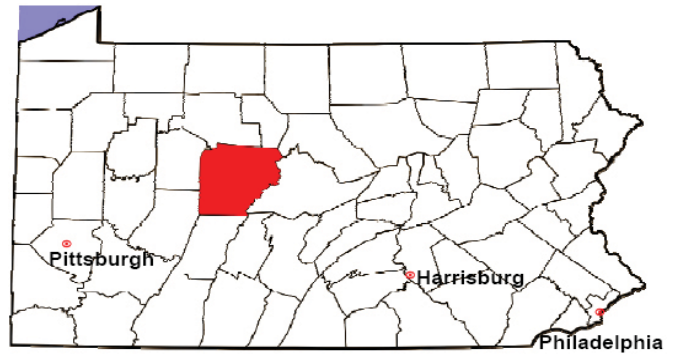
2008 Spousal & Child Support	No. of Petitions	%
Cases Pending 1/1/08	277	
New Cases Filed in '08	2,079	
Dockets Transferred In (+)	19	
Dockets Transferred Out (-)	9	
Cases Available for Processing	2,366	
Processed By:		
Judge	114	5.5%
Intake Officer	1,975	94.5%
Hearing Officer	0	0.0%
Other	1	0.0%
Cases Processed	2,090	100.0%
Cases Pending 12/31/08	276	

Spousal & Child Support New Cases Filed, 1998-2008



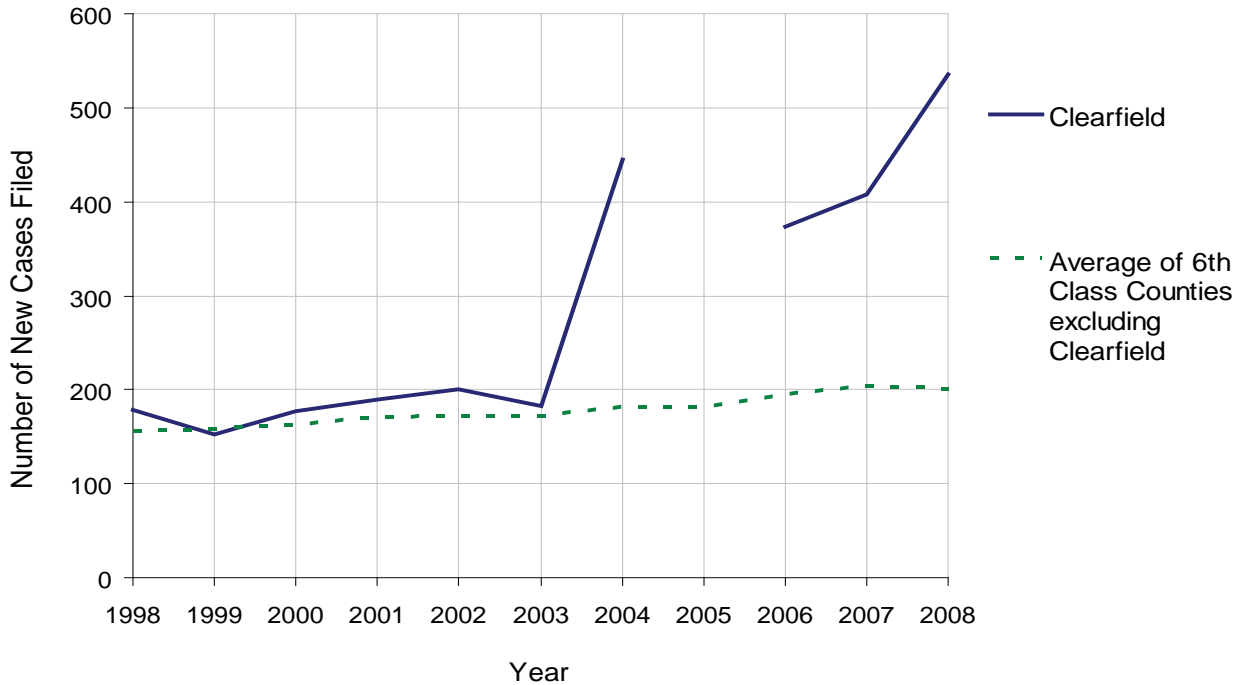
CLEARFIELD COUNTY

2008 Population Estimate: 82,896
 Class of County: 6th
 No. of Common Pleas Court Judgeships: 2



2008 Custody/Partial Custody/Visitation	No. of Petitions	%
Cases Pending 1/1/08	281	
New Cases Filed in '08	536	
Cases Available for Processing	817	
Processed By:		
Judge	134	32.2%
Non-Judicial Officer	76	18.3%
Other	206	49.5%
Cases Processed	416	100.0%
Cases Pending 12/31/08	401	

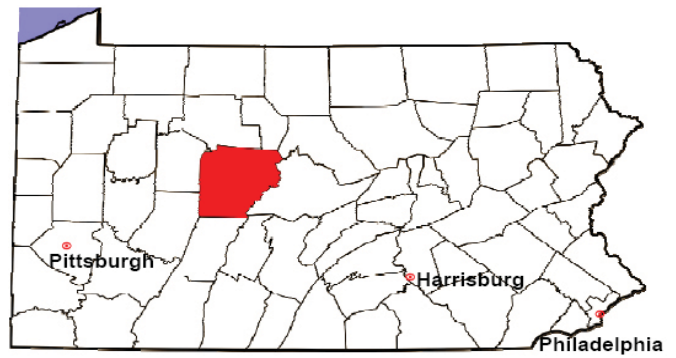
Custody/Partial Custody/Visitation New Cases Filed
 1998-2008



Note: Data for 2005 are not available.

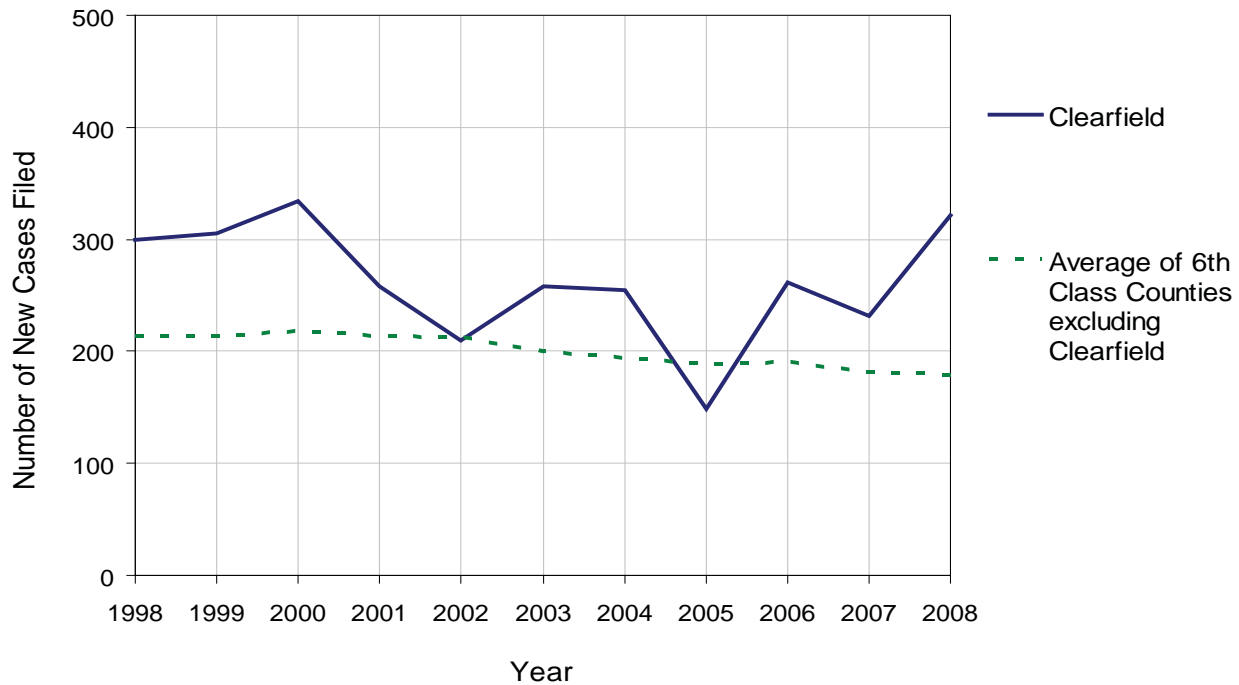
CLEARFIELD COUNTY

2008 Population Estimate: 82,896
 Class of County: 6th
 No. of Common Pleas Court Judgeships: 2



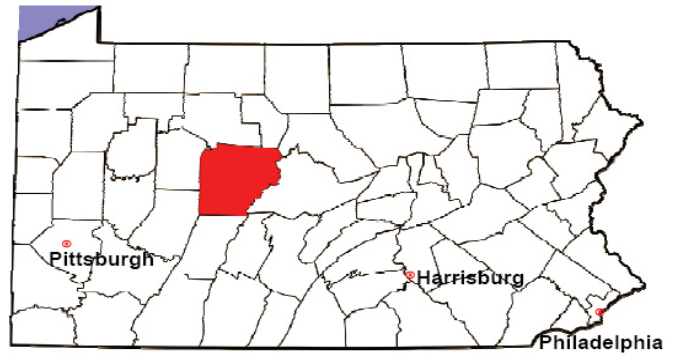
2008 Divorce	No. of Petitions	%
Cases Pending 1/1/08	266	
New Cases Filed in '08	321	
Cases Available for Processing	587	
Processed By:		
Contested Before a Judge	28	12.6%
Contested Before a Master	0	0.0%
Uncontested	171	77.0%
Other	23	10.4%
Cases Processed	222	100.0%
Cases Pending 12/31/08	365	

Divorce New Cases Filed, 1998-2008



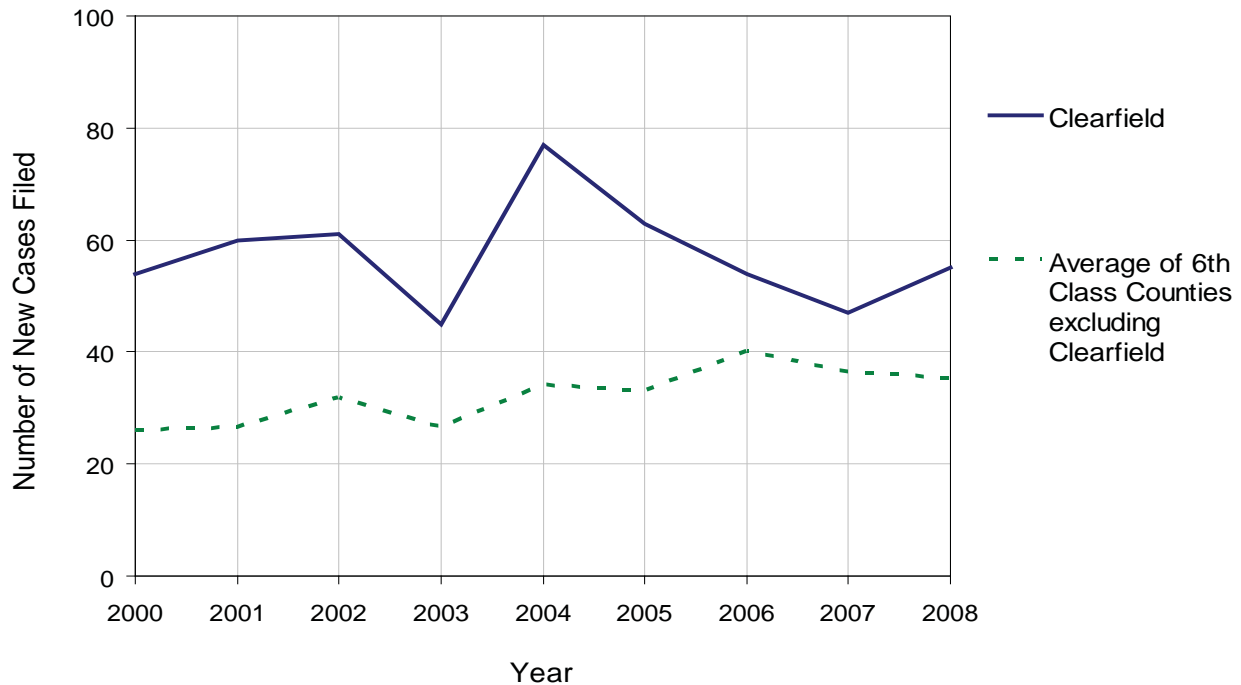
CLEARFIELD COUNTY

2008 Population Estimate: 82,896
 Class of County: 6th
 No. of Common Pleas Court Judgeships: 2



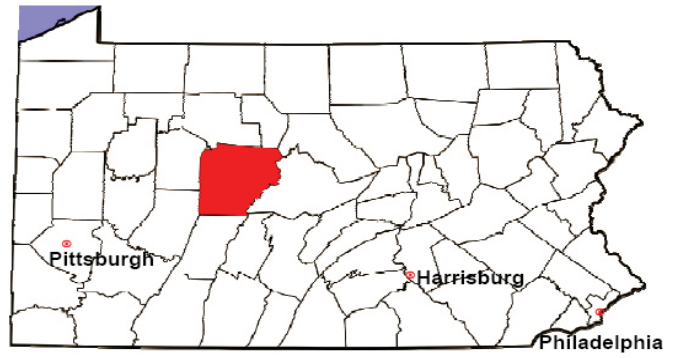
2008 Juvenile Dependency Abuse/Neglect	No. of Petitions	%
Cases Pending 1/1/08	0	
New Cases Filed in '08	55	
Cases Available for Processing	55	
Processed By:		
Judge	51	92.7%
Non-Judicial Officer	0	0.0%
Other	4	7.3%
Cases Processed	55	100.0%
Cases Pending 12/31/08	0	

Abuse/Neglect New Cases Filed, 2000-2008



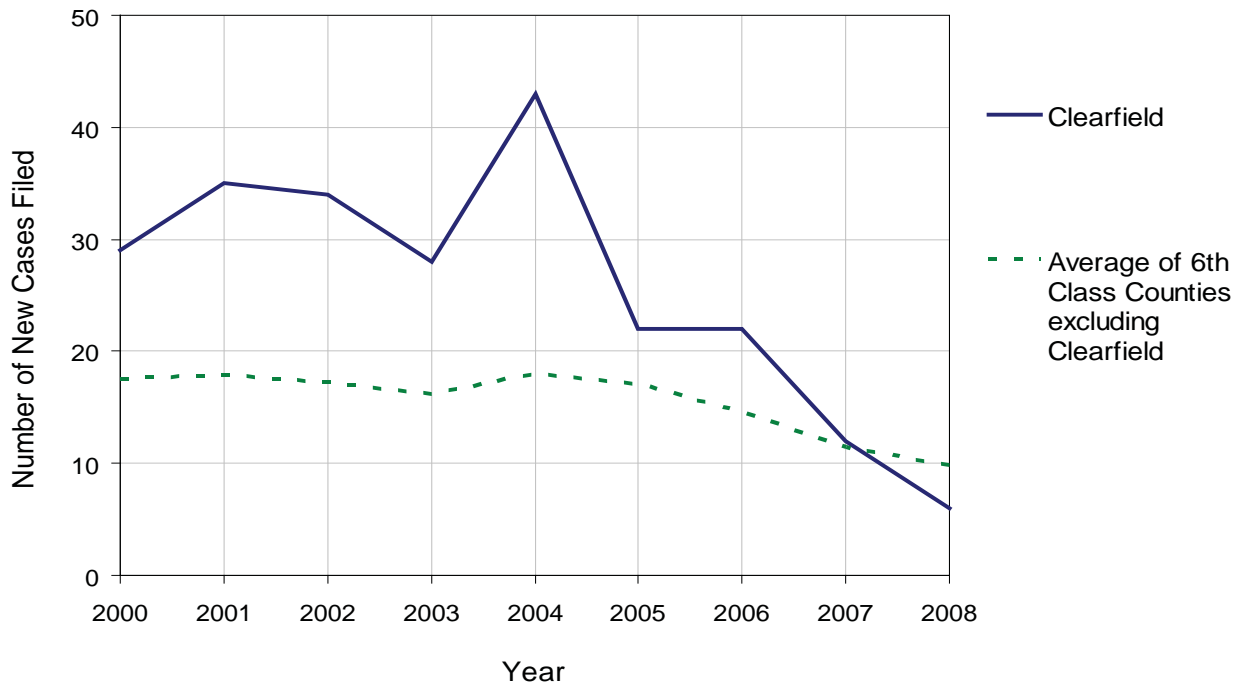
CLEARFIELD COUNTY

2008 Population Estimate: 82,896
 Class of County: 6th
 No. of Common Pleas Court Judgeships: 2



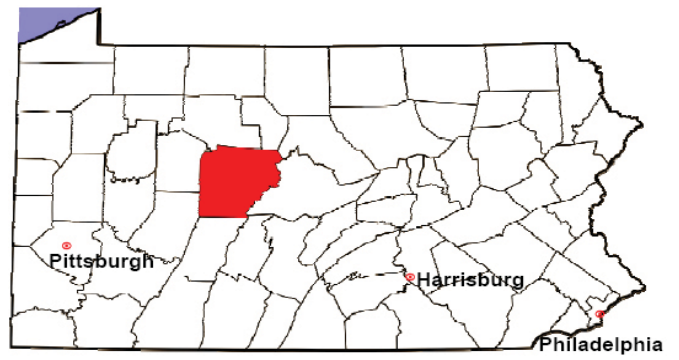
2008 Juvenile Dependency Status Offenses	No. of Petitions	%
Cases Pending 1/1/08	0	
New Cases Filed in '08	6	
Cases Available for Processing	6	
Processed By:		
Judge	6	100.0%
Non-Judicial Officer	0	0.0%
Other	0	0.0%
Cases Processed	6	100.0%
Cases Pending 12/31/08	0	

Status Offenses New Cases Filed, 2000-2008



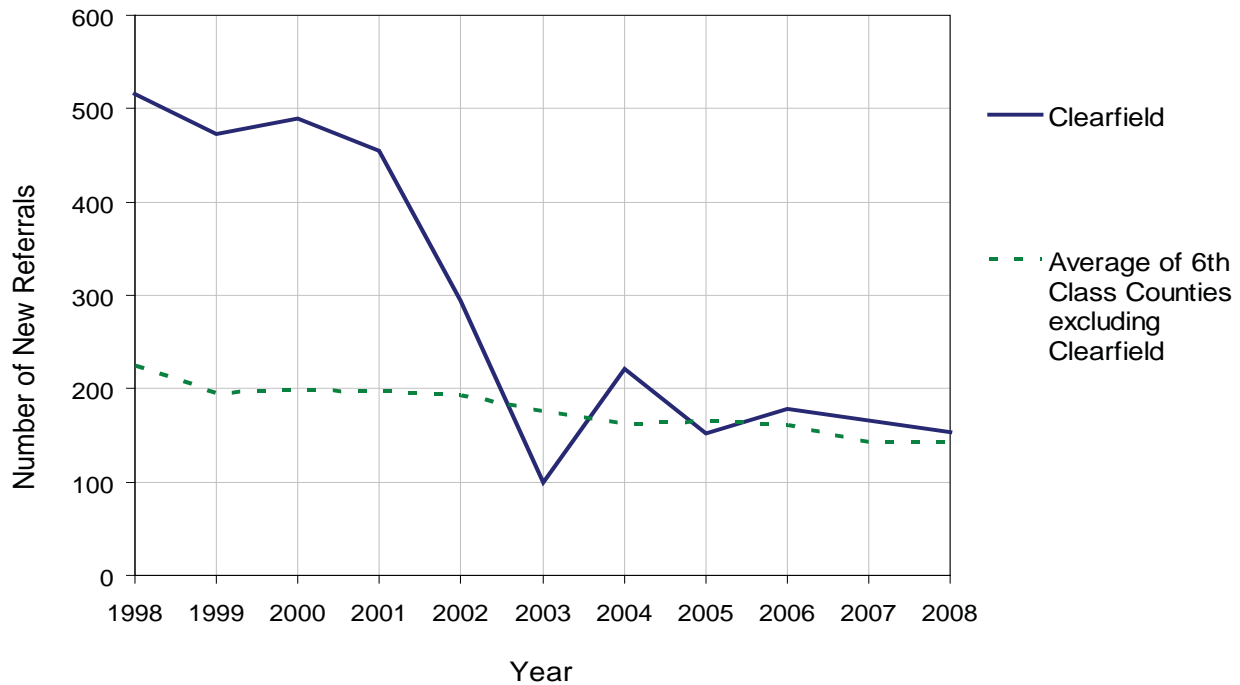
CLEARFIELD COUNTY

2008 Population Estimate: 82,896
 Class of County: 6th
 No. of Common Pleas Court Judgeships: 2



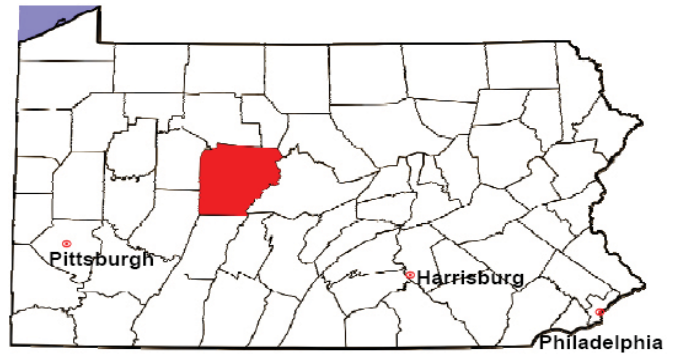
2008 Juvenile Delinquency	No. of Referrals	%
Cases Pending 1/1/08	153	
New Referrals in '08	153	
Cases Available for Processing	306	
Processed By:		
Judge	70	64.8%
Non-Judicial Officer	17	15.7%
Other	21	19.4%
Cases Processed	108	100.0%
Cases Pending 12/31/08	198	

Juvenile Delinquency New Referrals, 1998-2008



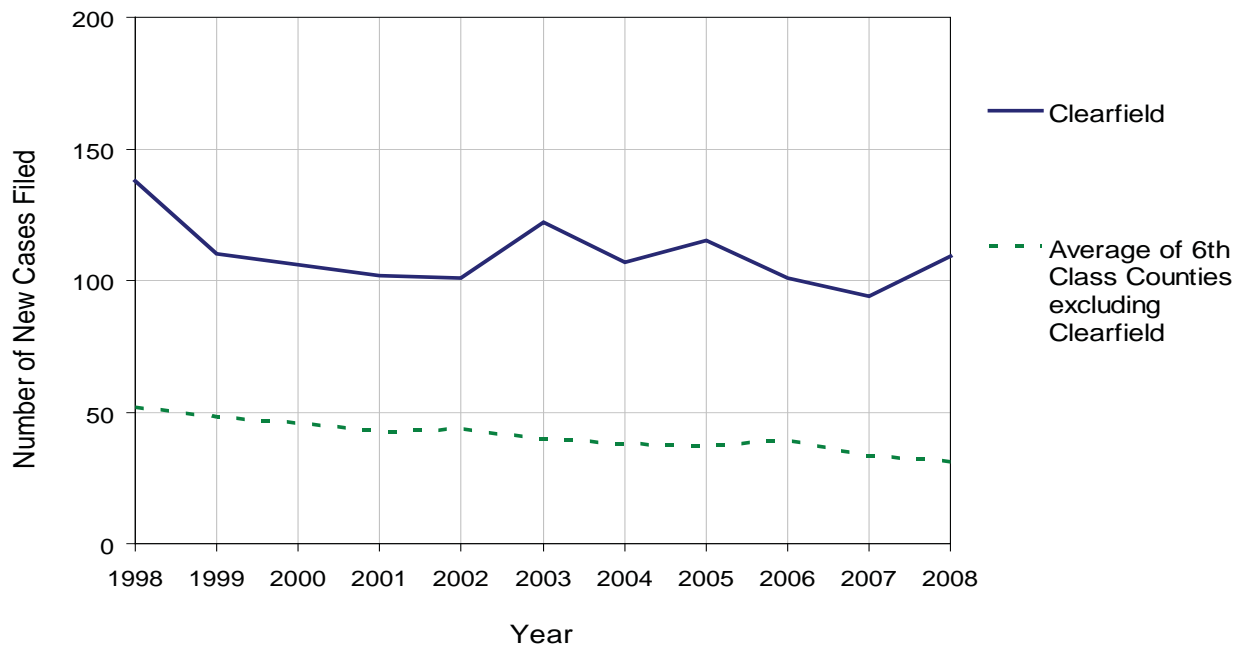
CLEARFIELD COUNTY

2008 Population Estimate: 82,896
 Class of County: 6th
 No. of Common Pleas Court Judgeships: 2



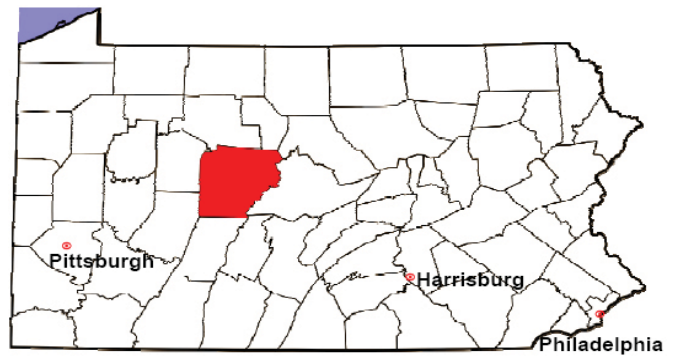
2008 Accounts	No. of Accounts	%
Cases Pending 1/1/08	3	
New Cases Filed in '08	109	
Cases Available for Processing	112	
Processed By:		
Contested before a Judge	2	1.8%
Contested before a Non-Judicial Officer	0	0.0%
Uncontested	108	97.3%
Other	1	0.9%
Cases Processed	111	100.0%
Cases Pending 12/31/08	1	

Accounts New Cases Filed, 1998-2008



CLEARFIELD COUNTY

2008 Population Estimate: 82,896
 Class of County: 6th
 No. of Common Pleas Court Judgeships: 2

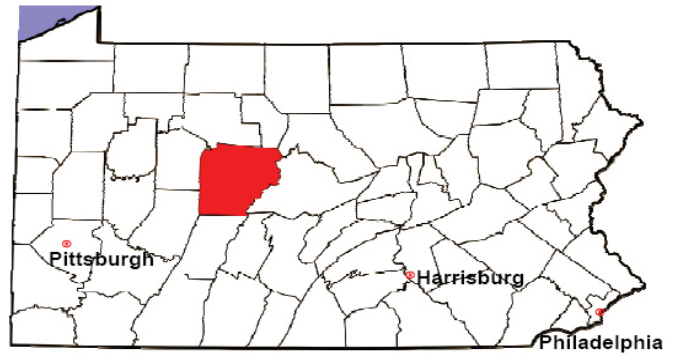


2008 Adoptions		No. of Cases	%
Cases Pending 1/1/08		14	
New Cases Filed in '08		54	
Cases Available for Processing		64	
Processed By:			
Contested before a Judge	Granted	0	0.0%
	Denied	0	0.0%
Uncontested	Granted	37	100.0%
	Denied	0	0.0%
Other		0	0.0%
Cases Processed		37	100.0%
Cases Pending 12/31/08		31	

Note: Prior to 2008, each petition was counted as one new case, regardless of the number of children listed on the petition. Starting in 2008, each child listed on a petition is counted as a separate case. Therefore, statistics for 2008 should not be compared with those for previous years.

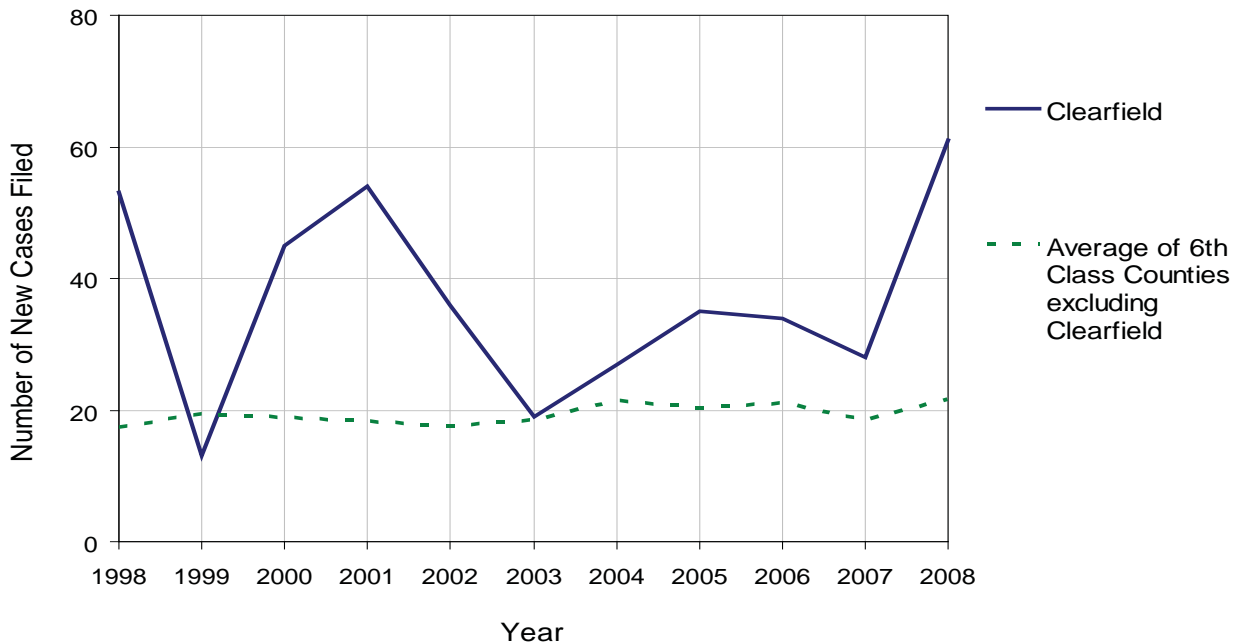
CLEARFIELD COUNTY

2008 Population Estimate: 82,896
 Class of County: 6th
 No. of Common Pleas Court Judgeships: 2



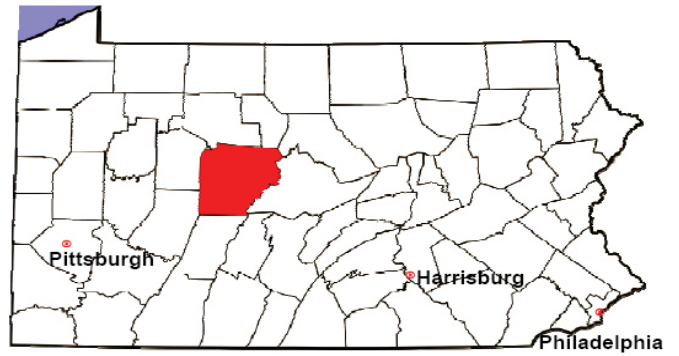
2008 Relinquishments/Terminations	No. of Petitions	%
Cases Pending 1/1/08	0	
New Cases Filed in '08	61	
Cases Available for Processing	61	
Processed By:		
Contested before a Judge	14	51.9%
Uncontested	13	48.1%
Other	0	0.0%
Cases Processed	27	100.0%
Cases Pending 12/31/08	34	

Relinquishments/Terminations New Cases Filed, 1998-2008



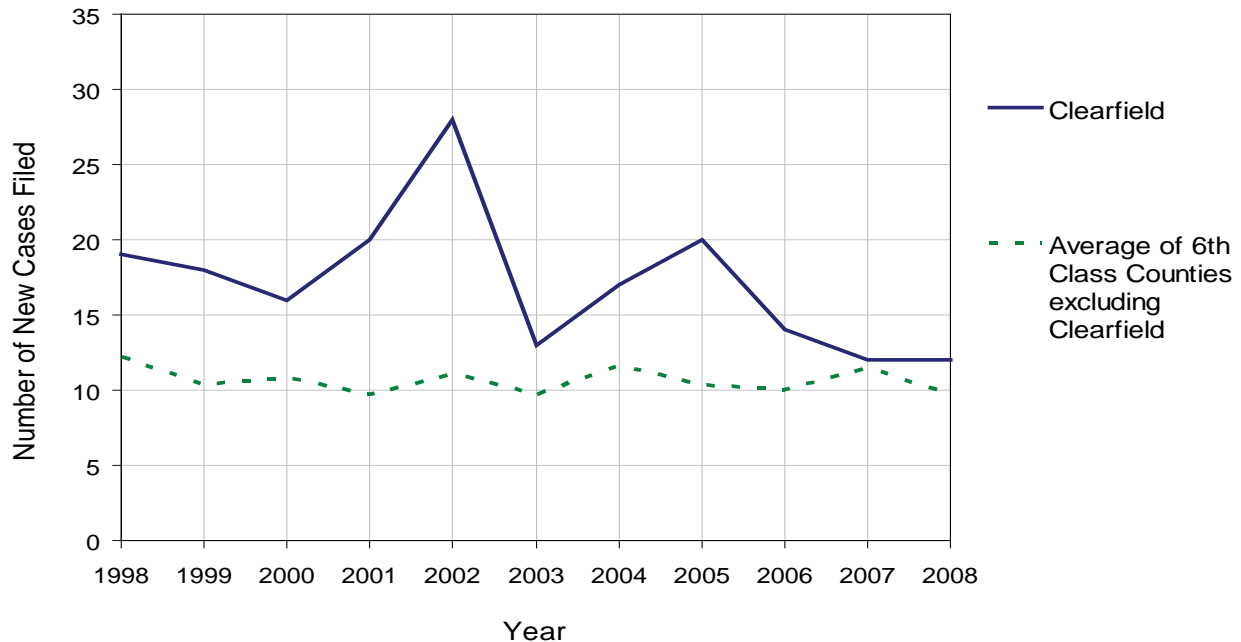
CLEARFIELD COUNTY

2008 Population Estimate: 82,896
 Class of County: 6th
 No. of Common Pleas Court Judgeships: 2



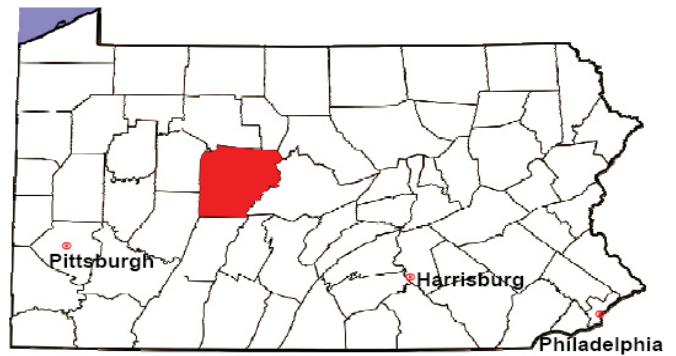
2008 Appointment of Guardians	No. of Petitions	%
Cases Pending 1/1/08	2	
New Cases Filed in '08	12	
Cases Available for Processing	14	
Processed By:		
Contested before a Judge	0	0.0%
Uncontested	9	90.0%
Other	1	10.0%
Cases Processed	10	100.0%
Cases Pending 12/31/08	4	

Appointment of Guardians New Cases Filed, 1998-2008



CLEARFIELD COUNTY

2008 Population Estimate: 82,896
 Class of County: 6th
 No. of Common Pleas Court Judgeships: 2



2008 Jury Activity & Performance Measures		
A. Juror Days		1,617
B. Number Sent to Voir Dire		3,048
	Voir Dire Attendance Rate $(B/A * 100)$	188.5%
C. Number of Voir Dires Started		101
	Juror Days Per Voir Dire Starts (A/C)	16
D. Number of Jurors Selected		1,414
	Juror Selection Rate $(D/B * 100)$	46.4%
E. Number of Jury Trials Started		60
	Juror Days Per Trial Starts (A/E)	27
	Number of Voir Dires Not Resulting in Trial $(C-E)$	41
	Percent Voir Dires Not Resulting in Trial $(C-E)/C * 100$	40.6%
F. Pool Days		14
G. Zero Panel Days		0
	Percent Zero Panel Days $(G/F * 100)$	0.0%
H. Total Juror Fees Incurred		\$41,537
	Average Juror Fees Per Trial (H/E)	\$692

Average Juror Fees Per Trial, 1998-2008

