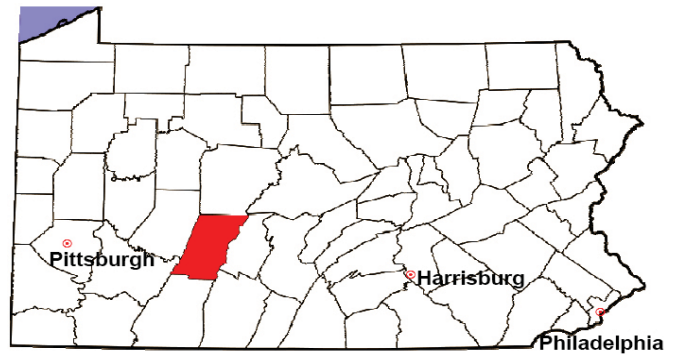


CAMBRIA COUNTY

2008 Population Estimate: 144,319

Class of County: 4th

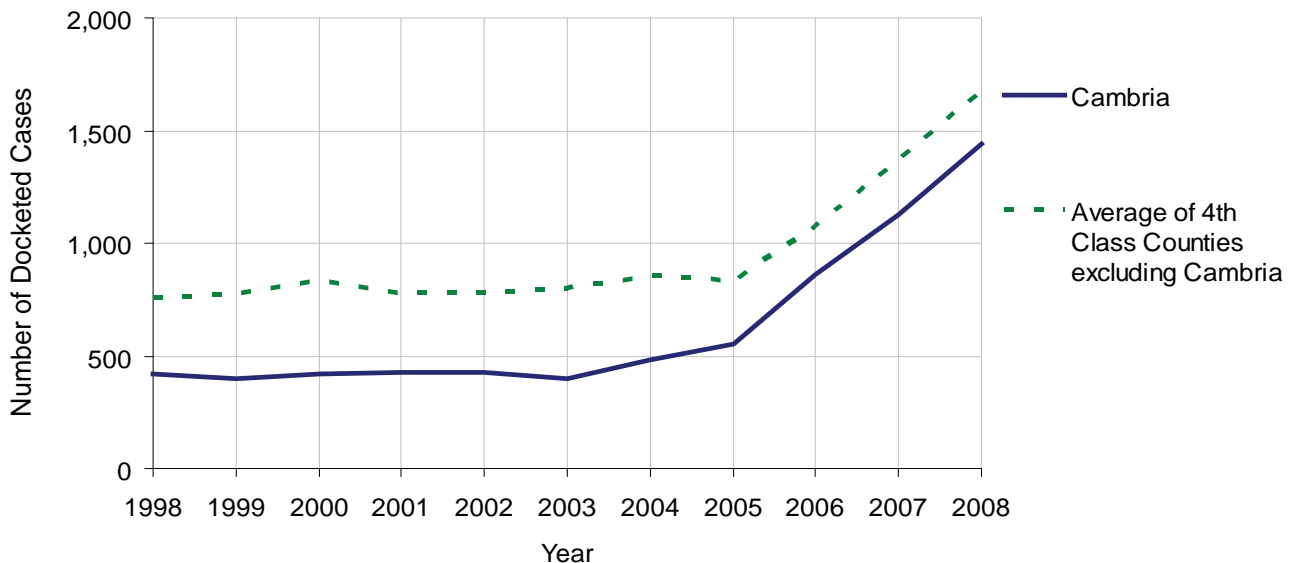
No. of Common Pleas Court Judgeships: 5



2008 Civil		Civil Action		
Docketed Cases		1,444		
Arbitrated Cases		33		
Trial-Ready Cases:		Civil Action	Other	Total
Cases Pending 1/1/08		59	1	60
Became Trial Ready in '08		85	3	88
Restored to Trial List		1	0	1
Appeals from Arbitration		7	0	7
Cases Available for Trial		152	4	156
Disposed By:				
Settlement		59	0	59
Non-Jury Trial		22	2	24
Jury Trial		5	0	5
Stricken from Trial List		5	0	5
Other		5	0	5
Cases Disposed		96	2	98
Cases Pending 12/31/08		56	2	58

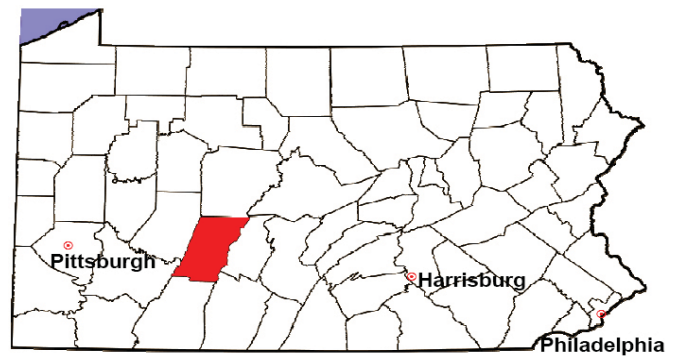
Age of Trial-Ready Cases as of 12/31/08 (Civil Action Only)		
0-6 months	37	66%
7-12 months	12	21%
13-18 months	5	9%
19-24 months	1	2%
25-30 months	1	2%
31-36 months	0	0%
Over 36 months	0	0%
Total	56	100%

Docketed Cases, 1998-2008



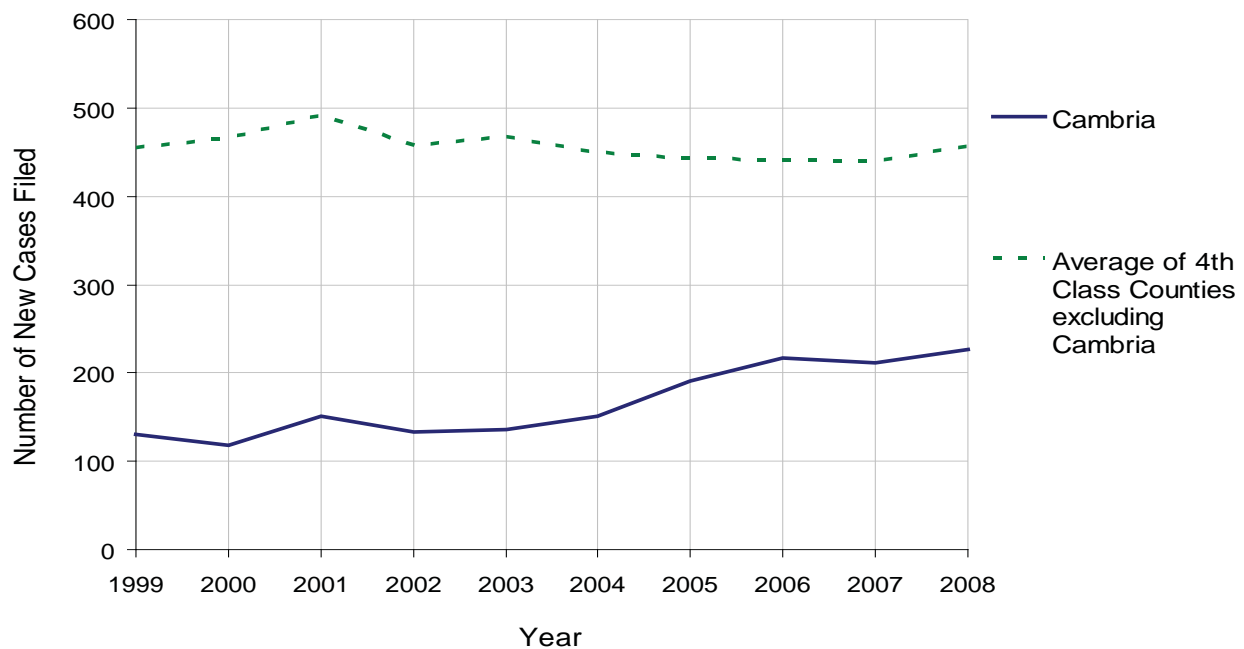
CAMBRIA COUNTY

2008 Population Estimate: 144,319
 Class of County: 4th
 No. of Common Pleas Court Judgeships: 5



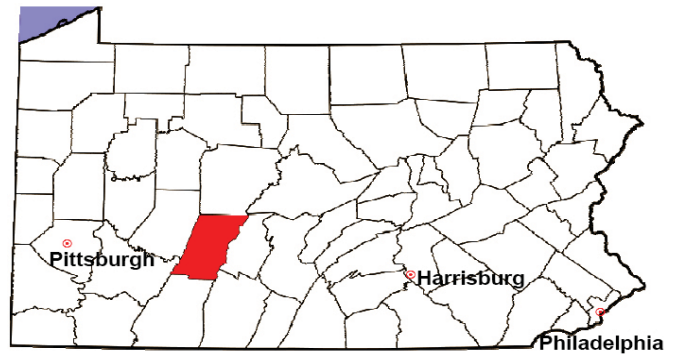
2008 Protection From Abuse	No. of Petitions	%
Cases Pending 1/1/08	1	
New Cases Filed in '08	226	
Cases Available for Processing	227	
Processed By:		
Final Order After Hearing	55	31.4%
Final Order by Stipulation or Agreement	67	38.3%
Dismissal	7	4.0%
Withdrawal	14	8.0%
Other	32	18.3%
Cases Processed	175	100.0%
Cases Pending 12/31/08	52	

PFA New Cases Filed, 1999-2008



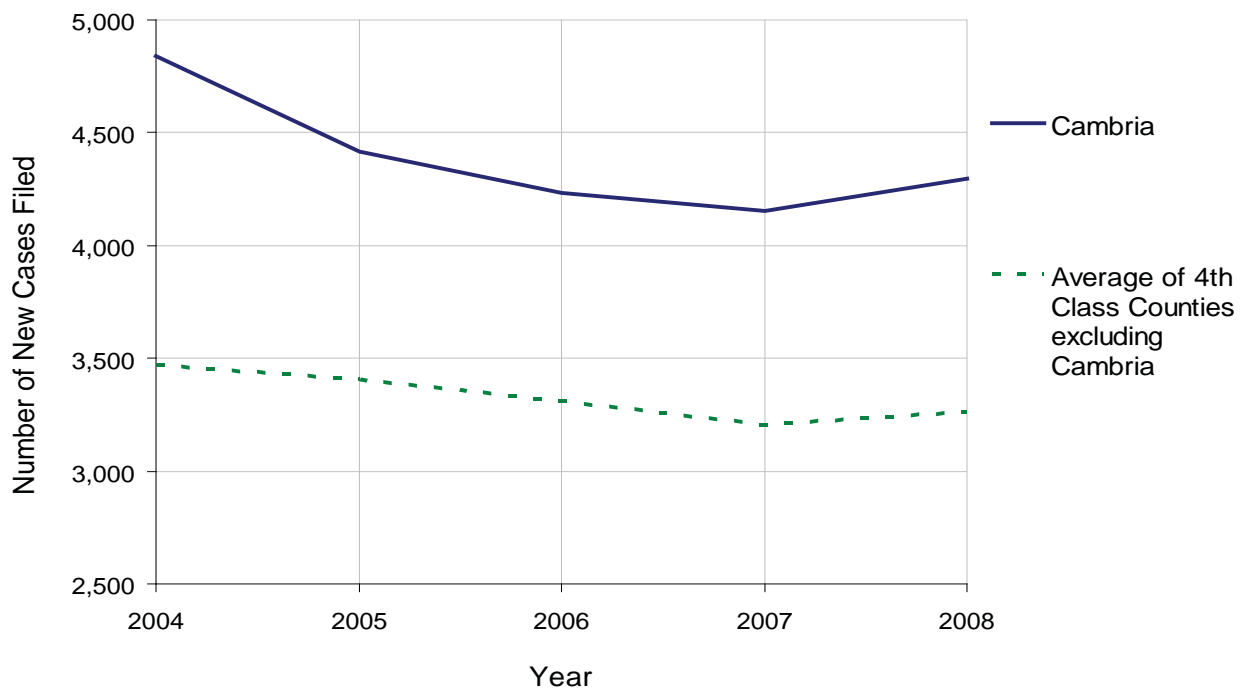
CAMBRIA COUNTY

2008 Population Estimate: 144,319
 Class of County: 4th
 No. of Common Pleas Court Judgeships: 5



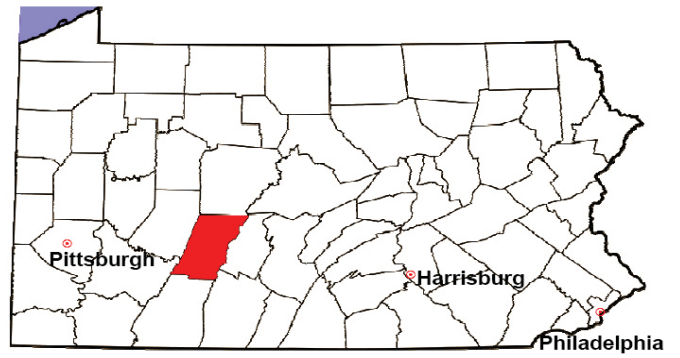
2008 Spousal & Child Support	No. of Petitions	%
Cases Pending 1/1/08	707	
New Cases Filed in '08	4,297	
Dockets Transferred In (+)	35	
Dockets Transferred Out (-)	43	
Cases Available for Processing	4,996	
Processed By:		
Judge	21	0.5%
Intake Officer	4,000	93.7%
Hearing Officer	249	5.8%
Other	1	0.0%
Cases Processed	4,271	100.0%
Cases Pending 12/31/08	725	

Spousal & Child Support New Cases Filed, 1998-2008



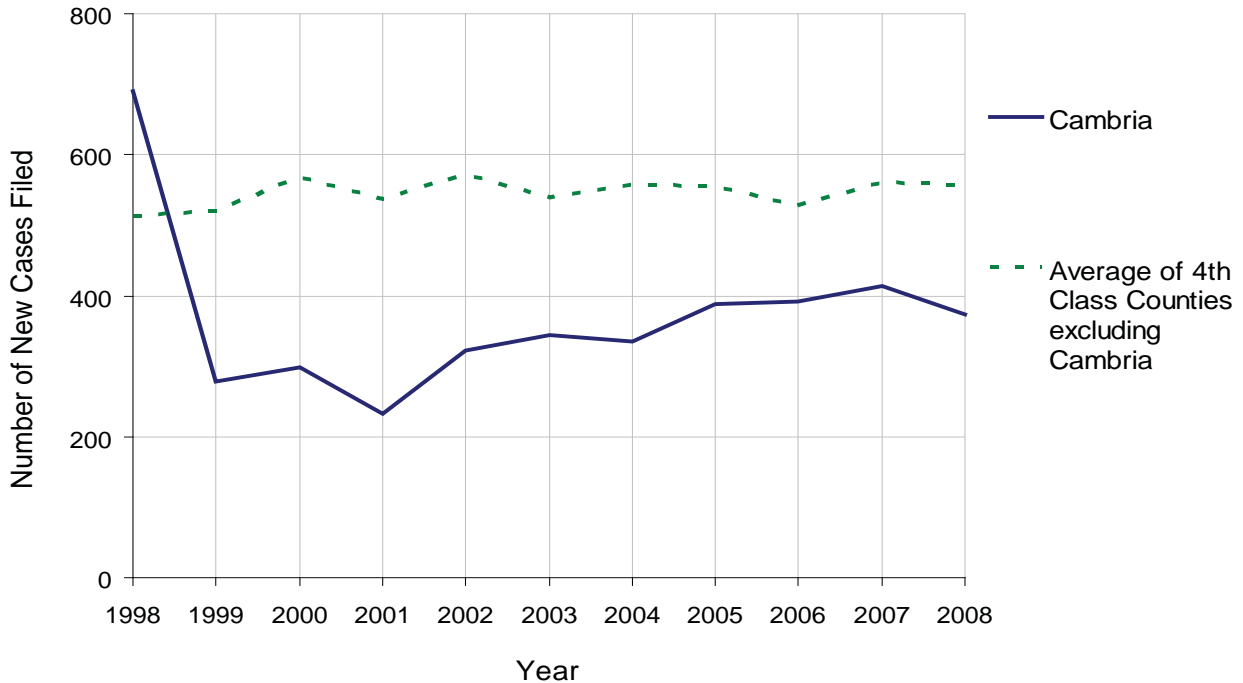
CAMBRIA COUNTY

2008 Population Estimate: 144,319
 Class of County: 4th
 No. of Common Pleas Court Judgeships: 5



2008 Custody/Partial Custody/Visitation	No. of Petitions	%
Cases Pending 1/1/08	43	
New Cases Filed in '08	373	
Cases Available for Processing	416	
Processed By:		
Judge	34	8.8%
Non-Judicial Officer	341	88.3%
Other	11	2.8%
Cases Processed	386	100.0%
Cases Pending 12/31/08	30	

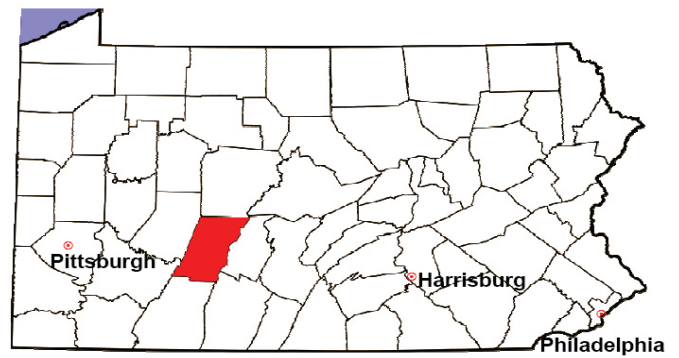
Custody/Partial Custody/Visitation New Cases Filed
 1998-2008



Note: The sharp decrease from 1998 to 1999 reflects a change in reporting methods.

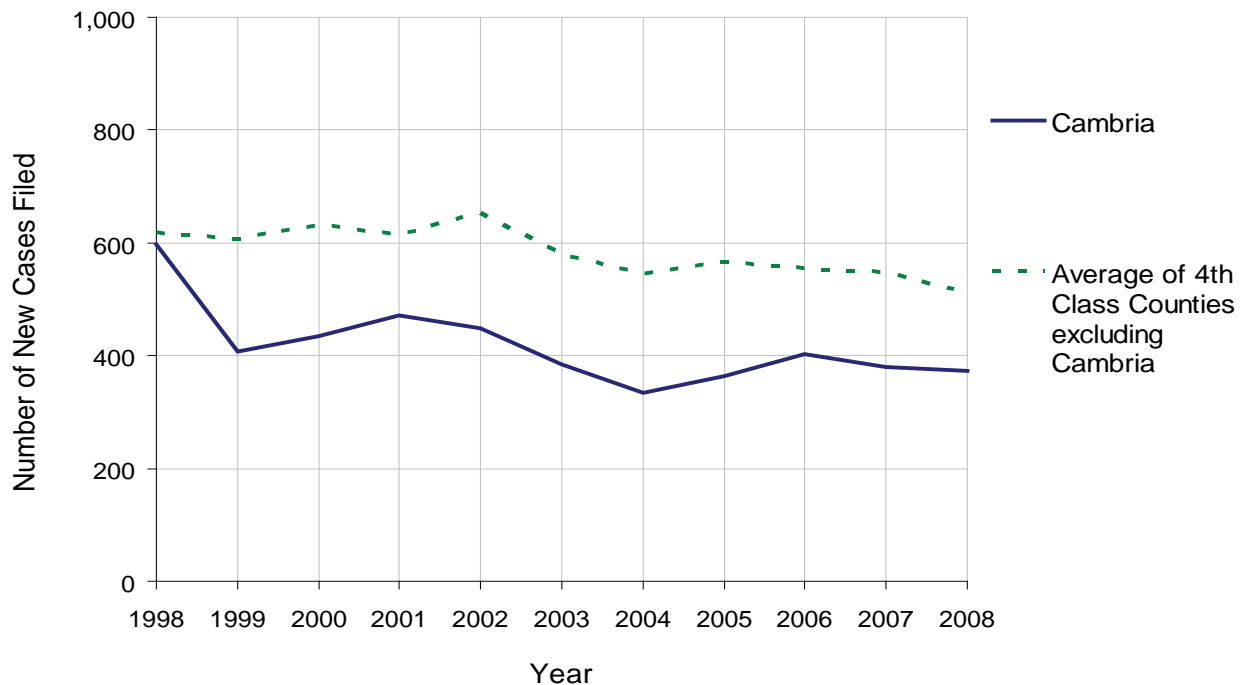
CAMBRIA COUNTY

2008 Population Estimate: 144,319
 Class of County: 4th
 No. of Common Pleas Court Judgeships: 5



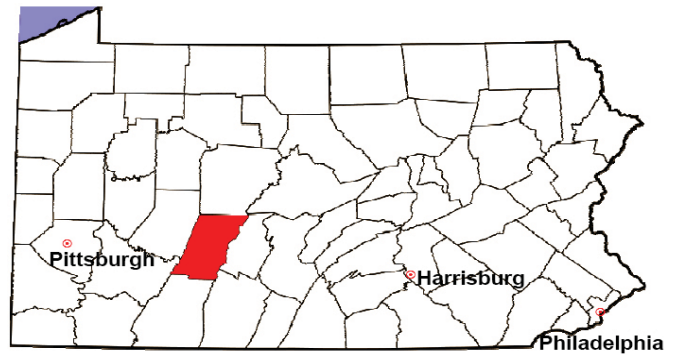
2008 Divorce	No. of Petitions	%
Cases Pending 1/1/08	67	
New Cases Filed in '08	374	
Cases Available for Processing	441	
Processed By:		
Contested Before a Judge	45	10.9%
Contested Before a Master	22	5.4%
Uncontested	338	82.2%
Other	6	1.5%
Cases Processed	411	100.0%
Cases Pending 12/31/08	30	

Divorce New Cases Filed, 1998-2008



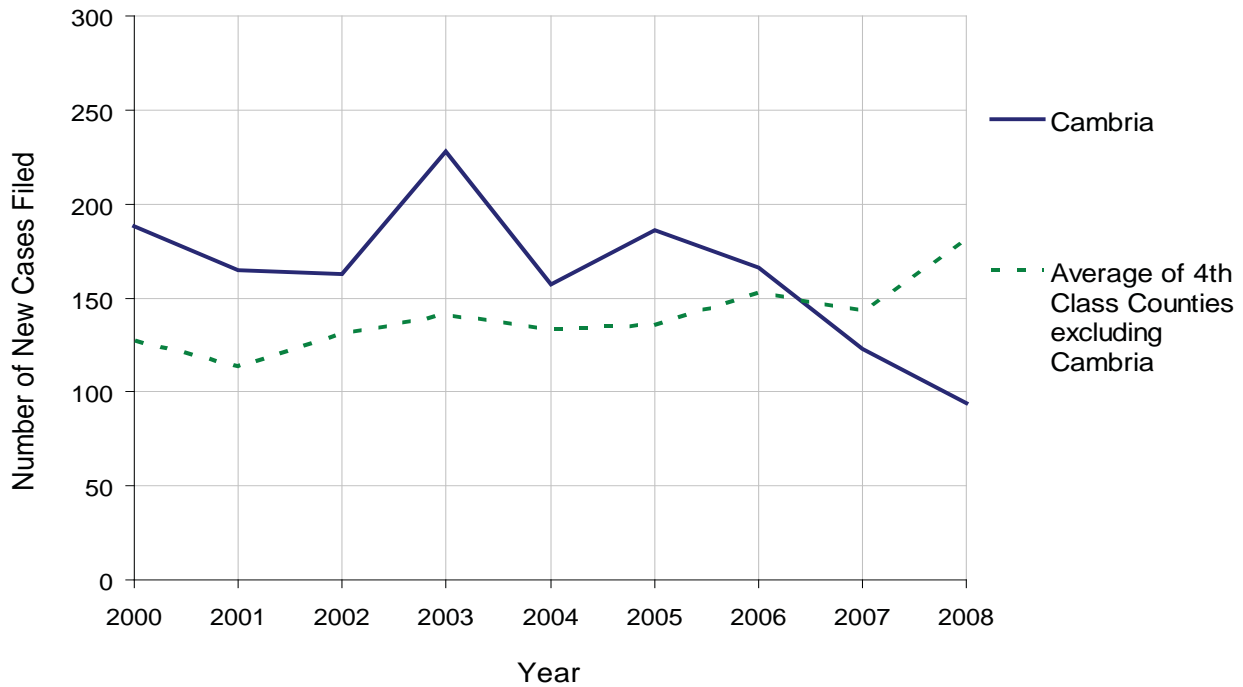
CAMBRIA COUNTY

2008 Population Estimate: 144,319
 Class of County: 4th
 No. of Common Pleas Court Judgeships: 5



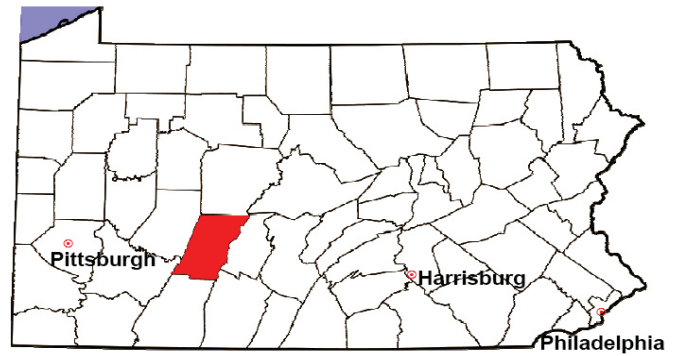
2008 Juvenile Dependency Abuse/Neglect	No. of Petitions	%
Cases Pending 1/1/08	2	
New Cases Filed in '08	94	
Cases Available for Processing	96	
Processed By:		
Judge	65	68.4%
Non-Judicial Officer	22	23.2%
Other	8	8.4%
Cases Processed	95	100.0%
Cases Pending 12/31/08	1	

Abuse/Neglect New Cases Filed, 2000-2008



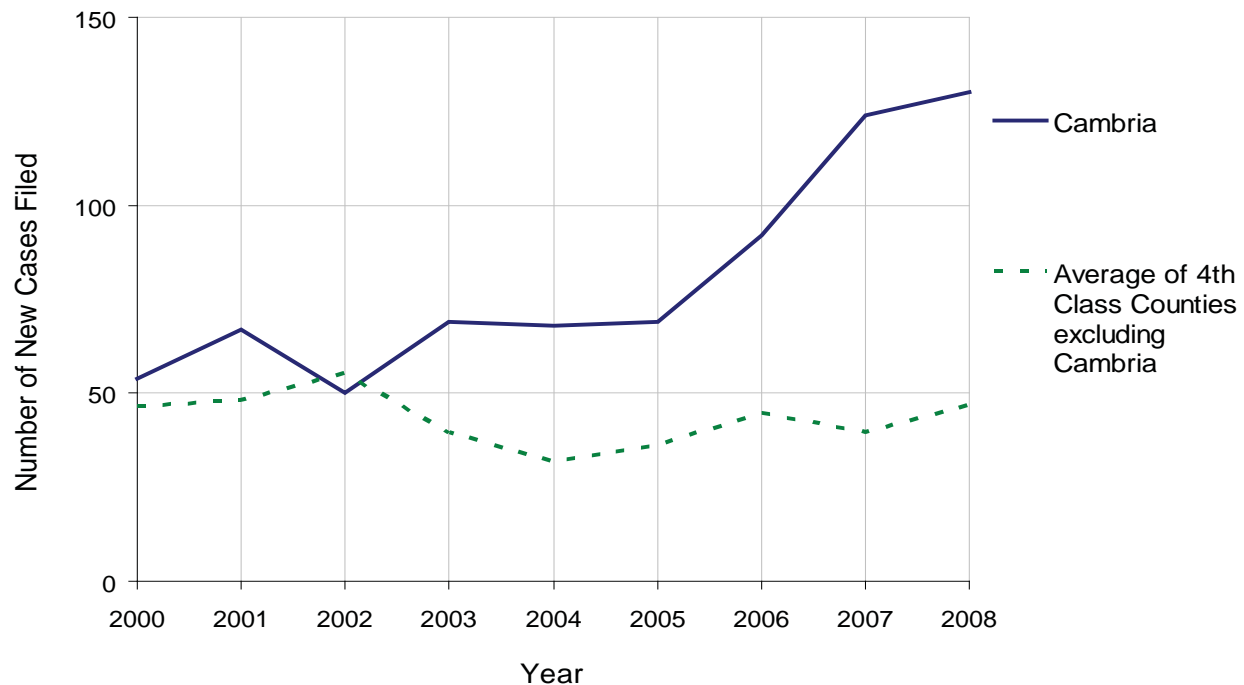
CAMBRIA COUNTY

2008 Population Estimate: 144,319
 Class of County: 4th
 No. of Common Pleas Court Judgeships: 5



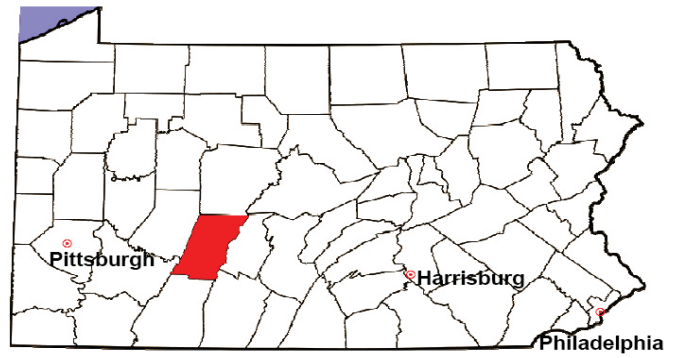
2008 Juvenile Dependency Status Offenses	No. of Petitions	%
Cases Pending 1/1/08	19	
New Cases Filed in '08	130	
Cases Available for Processing	149	
Processed By:		
Judge	14	10.1%
Non-Judicial Officer	125	89.9%
Other	0	0.0%
Cases Processed	139	100.0%
Cases Pending 12/31/08	10	

Status Offenses New Cases Filed, 2000-2008



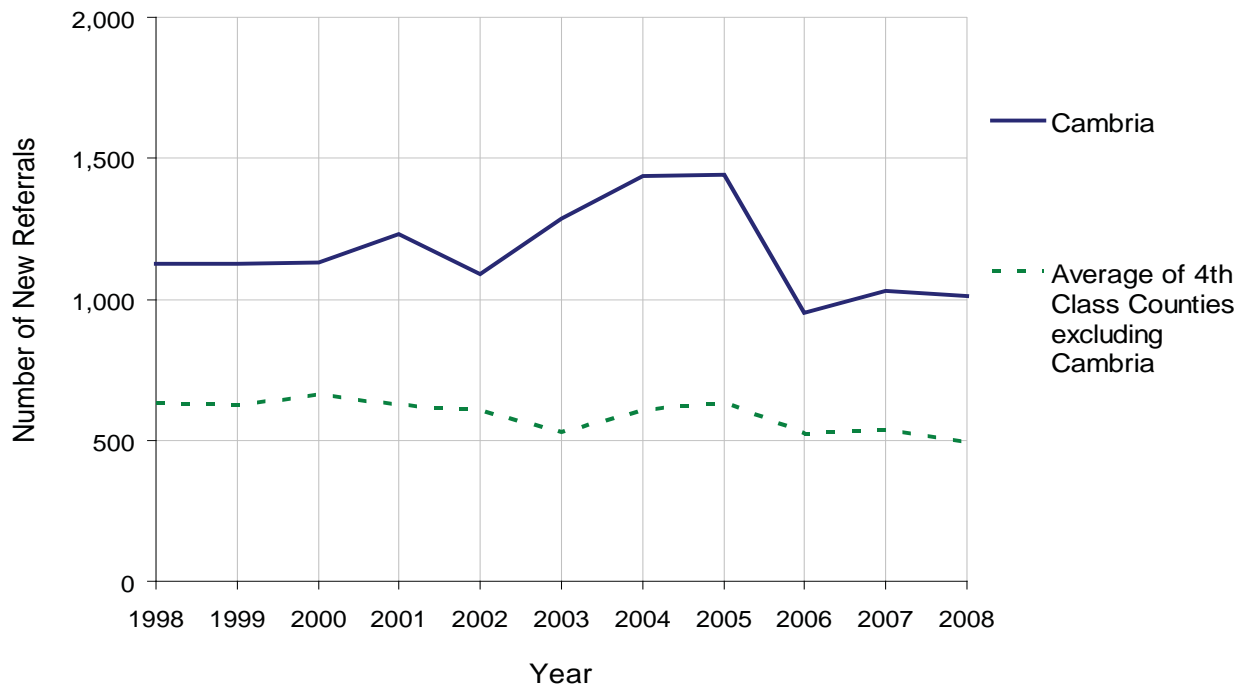
CAMBRIA COUNTY

2008 Population Estimate: 144,319
 Class of County: 4th
 No. of Common Pleas Court Judgeships: 5



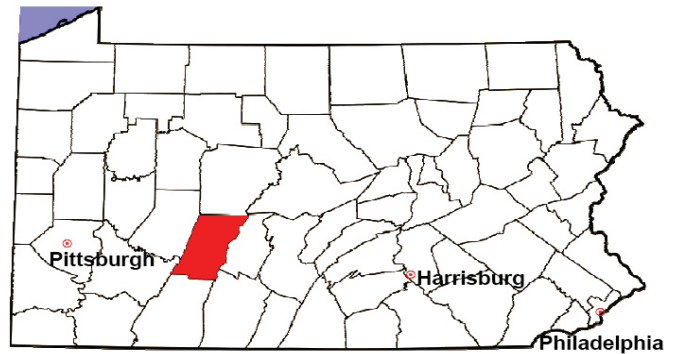
2008 Juvenile Delinquency	No. of Referrals	%
Cases Pending 1/1/08	228	
New Referrals in '08	1,012	
Cases Available for Processing	1,240	
Processed By:		
Judge	461	43.0%
Non-Judicial Officer	611	57.0%
Other	0	0.0%
Cases Processed	1,072	100.0%
Cases Pending 12/31/08	168	

Juvenile Delinquency New Referrals, 1998-2008



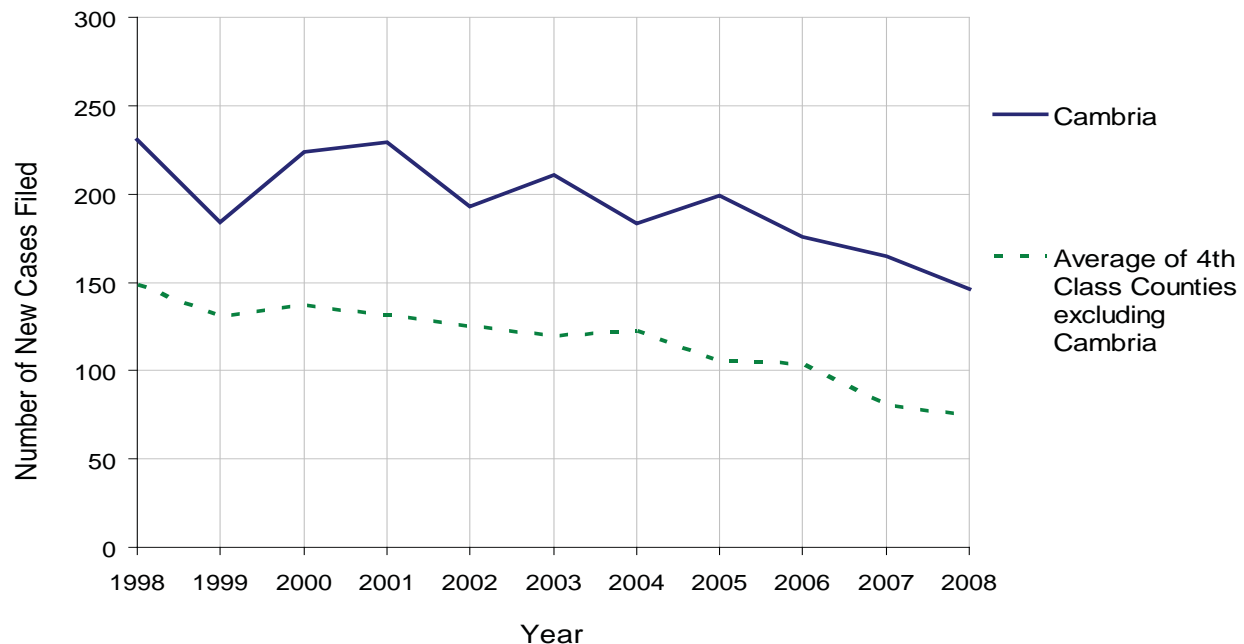
CAMBRIA COUNTY

2008 Population Estimate: 144,319
 Class of County: 4th
 No. of Common Pleas Court Judgeships: 5



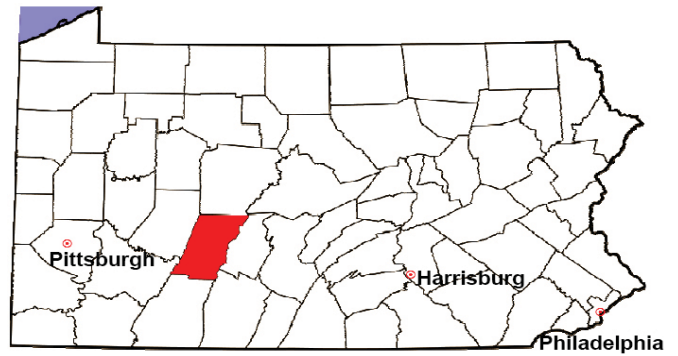
2008 Accounts	No. of Accounts	%
Cases Pending 1/1/08	29	
New Cases Filed in '08	146	
Cases Available for Processing	175	
Processed By:		
Contested before a Judge	6	4.2%
Contested before a Non-Judicial Officer	0	0.0%
Uncontested	137	95.1%
Other	1	0.7%
Cases Processed	144	100.0%
Cases Pending 12/31/08	31	

Accounts New Cases Filed, 1998-2008



CAMBRIA COUNTY

2008 Population Estimate: 144,319
 Class of County: 4th
 No. of Common Pleas Court Judgeships: 5

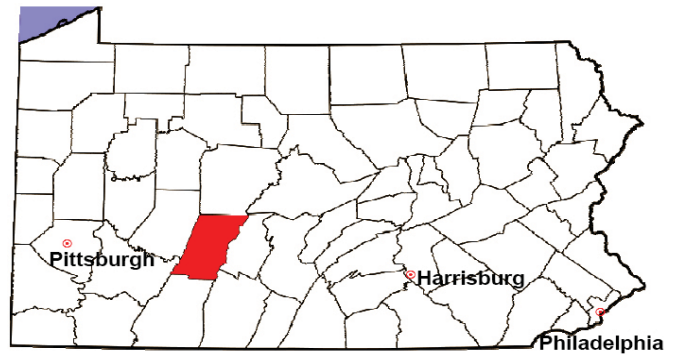


2008 Adoptions		No. of Cases	%
Cases Pending 1/1/08		2	
New Cases Filed in '08		55	
Cases Available for Processing		57	
Processed By:			
Contested before a Judge	Granted	0	0.0%
	Denied	0	0.0%
Uncontested	Granted	42	100.0%
	Denied	0	0.0%
Other		0	0.0%
Cases Processed		42	100.0%
Cases Pending 12/31/08		15	

Note: Prior to 2008, each petition was counted as one new case, regardless of the number of children listed on the petition. Starting in 2008, each child listed on a petition is counted as a separate case. Therefore, statistics for 2008 should not be compared with those for previous years.

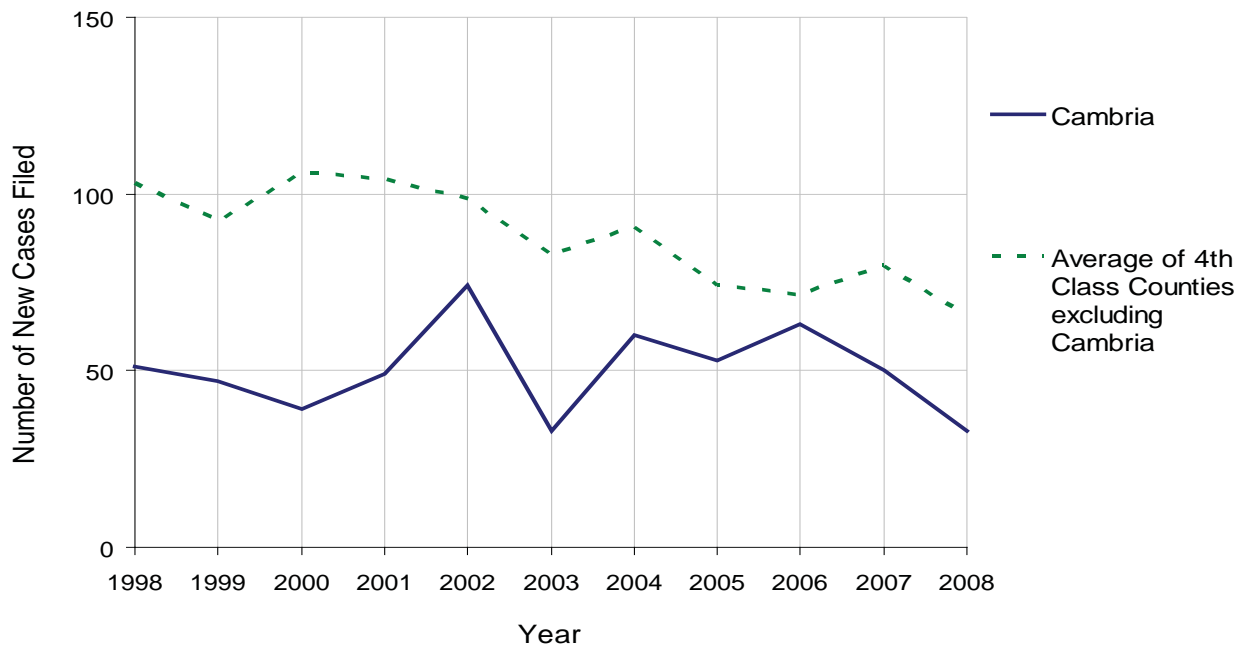
CAMBRIA COUNTY

2008 Population Estimate: 144,319
 Class of County: 4th
 No. of Common Pleas Court Judgeships: 5



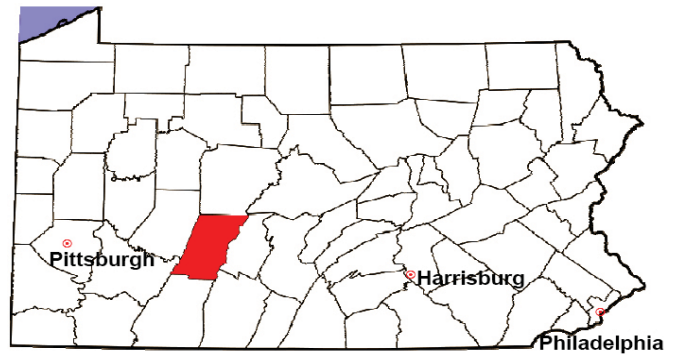
2008 Relinquishments/Terminations	No. of Petitions	%
Cases Pending 1/1/08	27	
New Cases Filed in '08	33	
Cases Available for Processing	60	
Processed By:		
Contested before a Judge	16	41.0%
Uncontested	17	43.6%
Other	6	15.4%
Cases Processed	39	100.0%
Cases Pending 12/31/08	21	

Relinquishments/Terminations New Cases Filed, 1998-2008



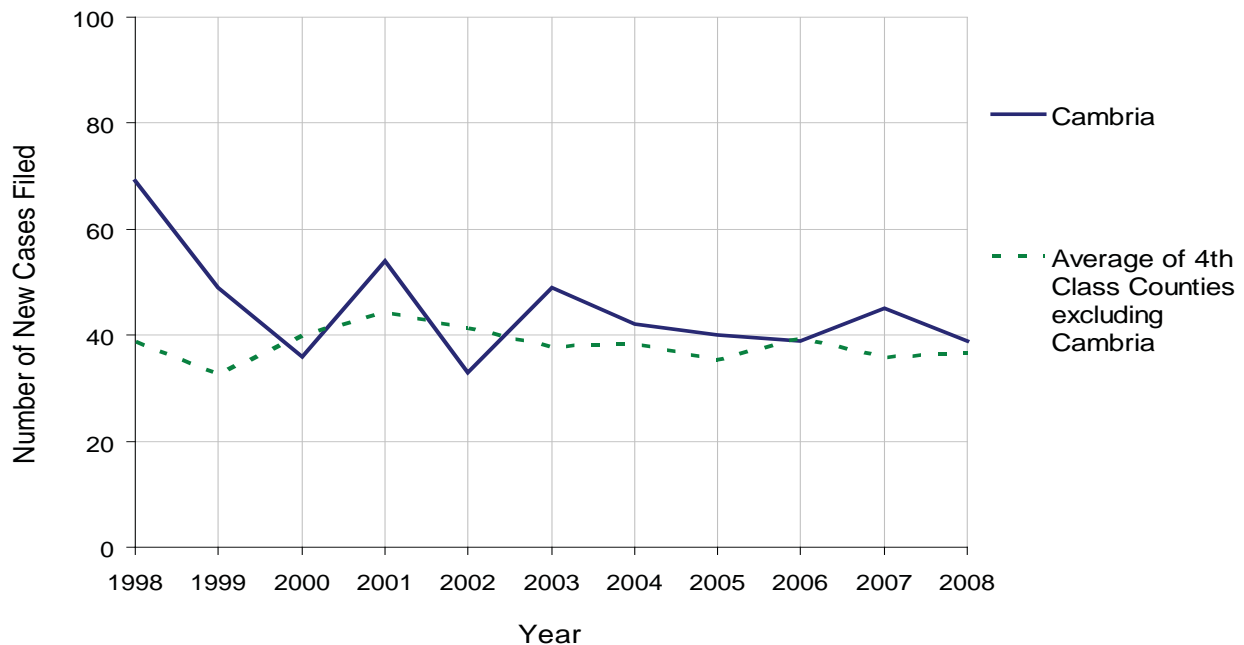
CAMBRIA COUNTY

2008 Population Estimate: 144,319
 Class of County: 4th
 No. of Common Pleas Court Judgeships: 5



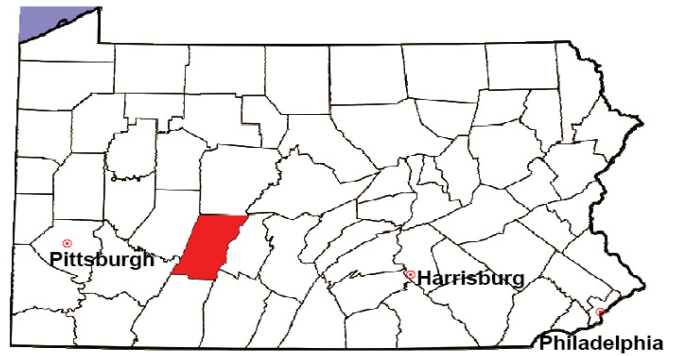
2008 Appointment of Guardians	No. of Petitions	%
Cases Pending 1/1/08	28	
New Cases Filed in '08	39	
Cases Available for Processing	67	
Processed By:		
Contested before a Judge	0	0.0%
Uncontested	35	81.4%
Other	8	18.6%
Cases Processed	43	100.0%
Cases Pending 12/31/08	24	

Appointment of Guardians New Cases Filed, 1998-2008



CAMBRIA COUNTY

2008 Population Estimate: 144,319
 Class of County: 4th
 No. of Common Pleas Court Judgeships: 5



2008 Jury Activity & Performance Measures		
A. Juror Days	1,517	
B. Number Sent to Voir Dire	1,262	
Voir Dire Attendance Rate $(B/A * 100)$		83.2%
C. Number of Voir Dires Started	40	
Juror Days Per Voir Dire Starts (A/C)		38
D. Number of Jurors Selected	402	
Juror Selection Rate $(D/B * 100)$		31.9%
E. Number of Jury Trials Started	20	
Juror Days Per Trial Starts (A/E)		76
Number of Voir Dires Not Resulting in Trial $(C-E)$		20
Percent Voir Dires Not Resulting in Trial $(C-E)/C * 100$		50.0%
F. Pool Days	17	
G. Zero Panel Days	2	
Percent Zero Panel Days $(G/F * 100)$		11.8%
H. Total Juror Fees Incurred	\$29,124	
Average Juror Fees Per Trial (H/E)		\$1,456

Average Juror Fees Per Trial, 1998-2008

