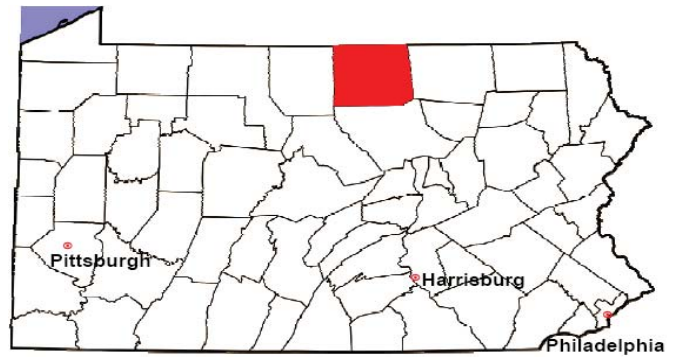


TIOGA COUNTY

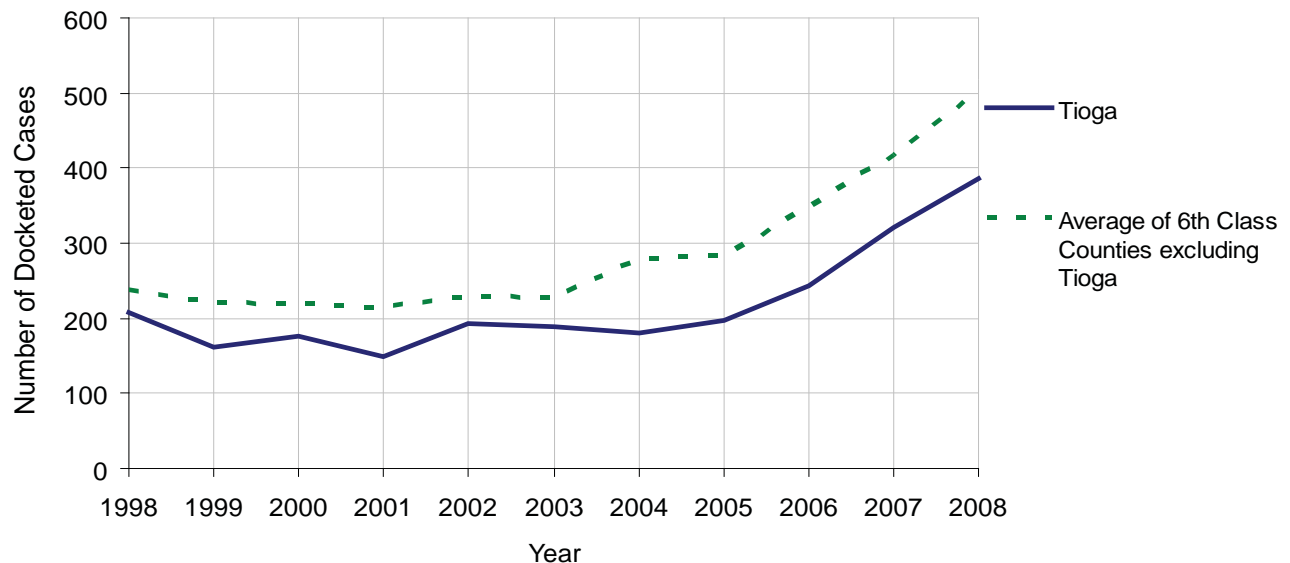
2008 Population Estimate: 40,574
 Class of County: 6th
 No. of Common Pleas Court Judgeships: 1



2008 Civil		Civil Action		
Docketed Cases		387		
Arbitrated Cases		5		
Trial-Ready Cases:		Civil Action	Other	Total
Cases Pending 1/1/08		10	2	12
Became Trial Ready in '08		9	2	11
Restored to Trial List		0	0	0
Appeals from Arbitration		1	0	1
Cases Available for Trial		20	4	24
Disposed By:				
Settlement		5	1	6
Non-Jury Trial		4	0	4
Jury Trial		1	0	1
Stricken from Trial List		0	2	2
Other		0	0	0
Cases Disposed		10	3	13
Cases Pending 12/31/08		10	1	11

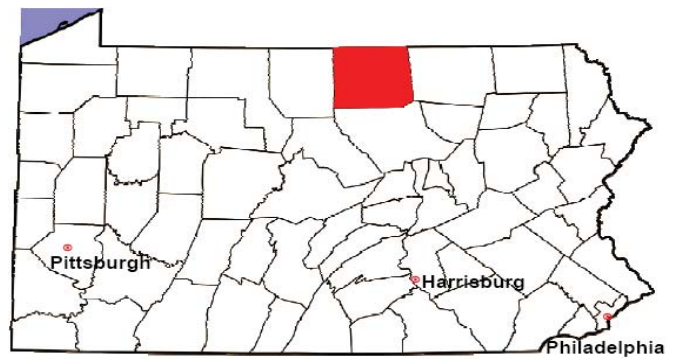
Age of Trial-Ready Cases as of 12/31/08 (Civil Action Only)		
0-6 months	3	30%
7-12 months	2	20%
13-18 months	2	20%
19-24 months	3	30%
25-30 months	0	0%
31-36 months	0	0%
Over 36 months	0	0%
Total	10	100%

Docketed Cases, 1998-2008



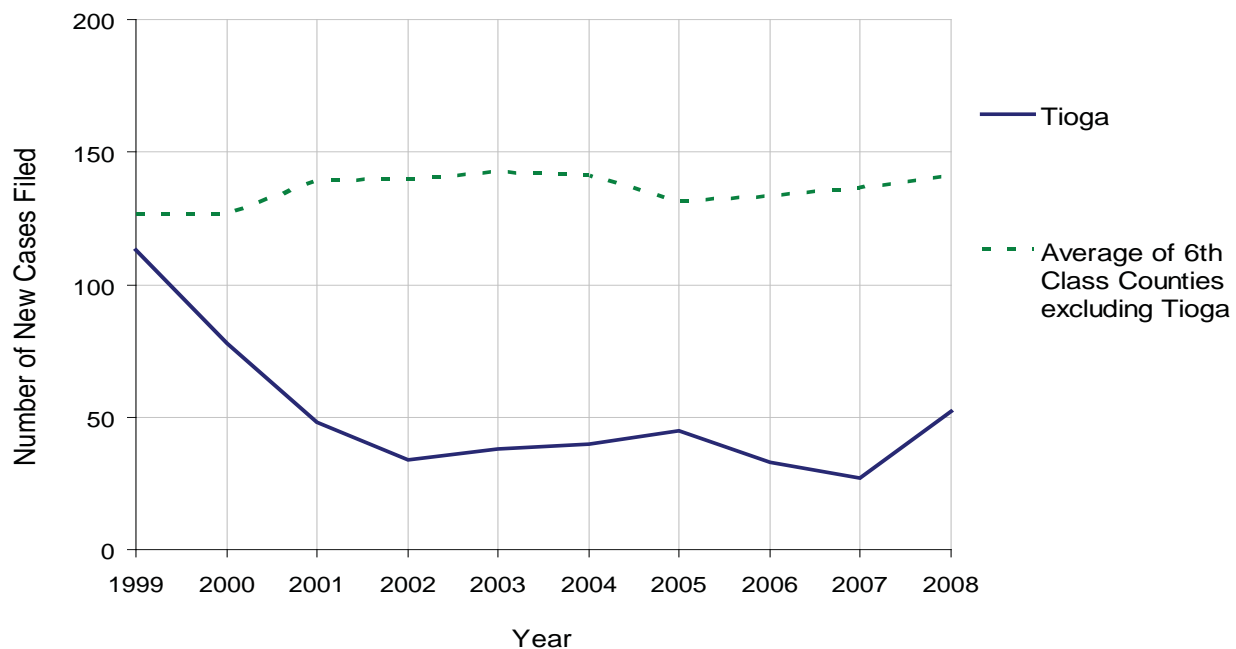
TIOGA COUNTY

2008 Population Estimate: 40,574
 Class of County: 6th
 No. of Common Pleas Court Judgeships: 1



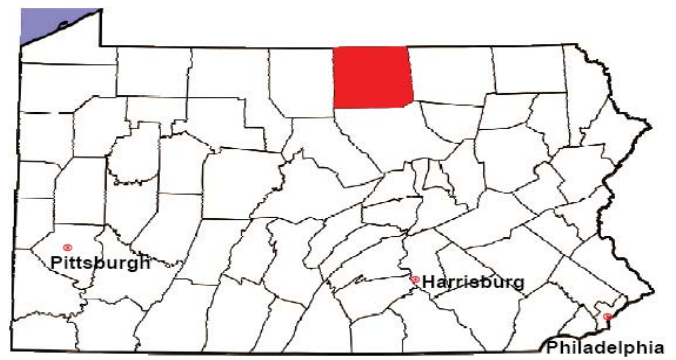
2008 Protection From Abuse	No. of Petitions	%
Cases Pending 1/1/08	7	
New Cases Filed in '08	52	
Cases Available for Processing	59	
Processed By:		
Final Order After Hearing	1	2.0%
Final Order by Stipulation or Agreement	40	81.6%
Dismissal	0	0.0%
Withdrawal	7	14.3%
Other	1	2.0%
Cases Processed	49	100.0%
Cases Pending 12/31/08	10	

PFA New Cases Filed, 1999-2008



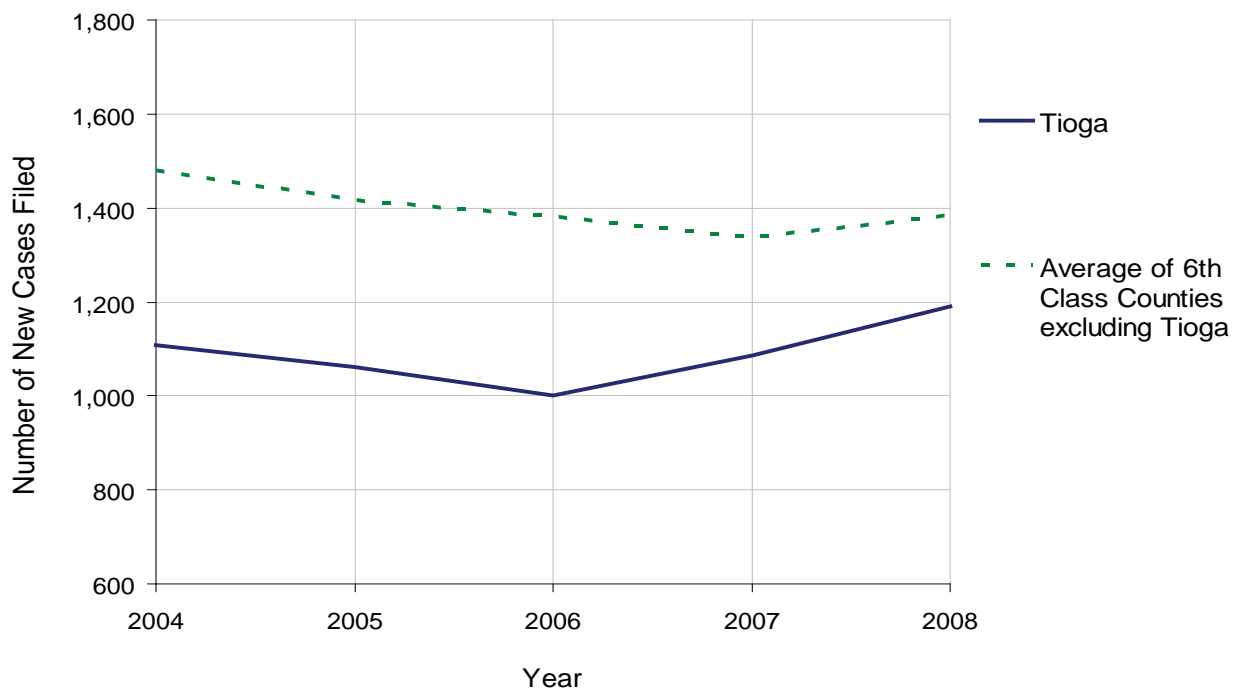
TIOGA COUNTY

2008 Population Estimate: 40,574
 Class of County: 6th
 No. of Common Pleas Court Judgeships: 1



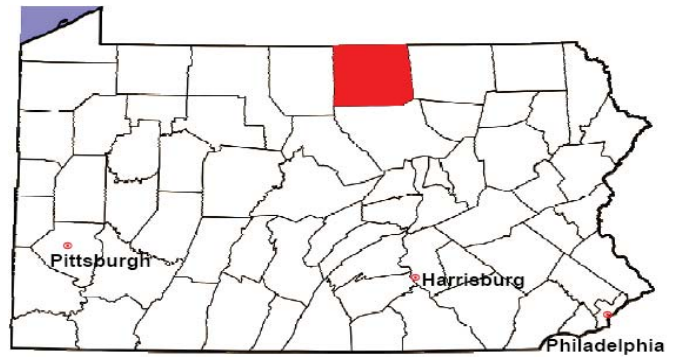
2008 Spousal & Child Support	No. of Petitions	%
Cases Pending 1/1/08	99	
New Cases Filed in '08	1,190	
Dockets Transferred In (+)	11	
Dockets Transferred Out (-)	5	
Cases Available for Processing	1,295	
Processed By:		
Judge	15	1.2%
Intake Officer	926	75.8%
Hearing Officer	280	22.9%
Other	0	0.0%
Cases Processed	1,221	100.0%
Cases Pending 12/31/08	74	

Spousal & Child Support New Cases Filed, 1998-2008



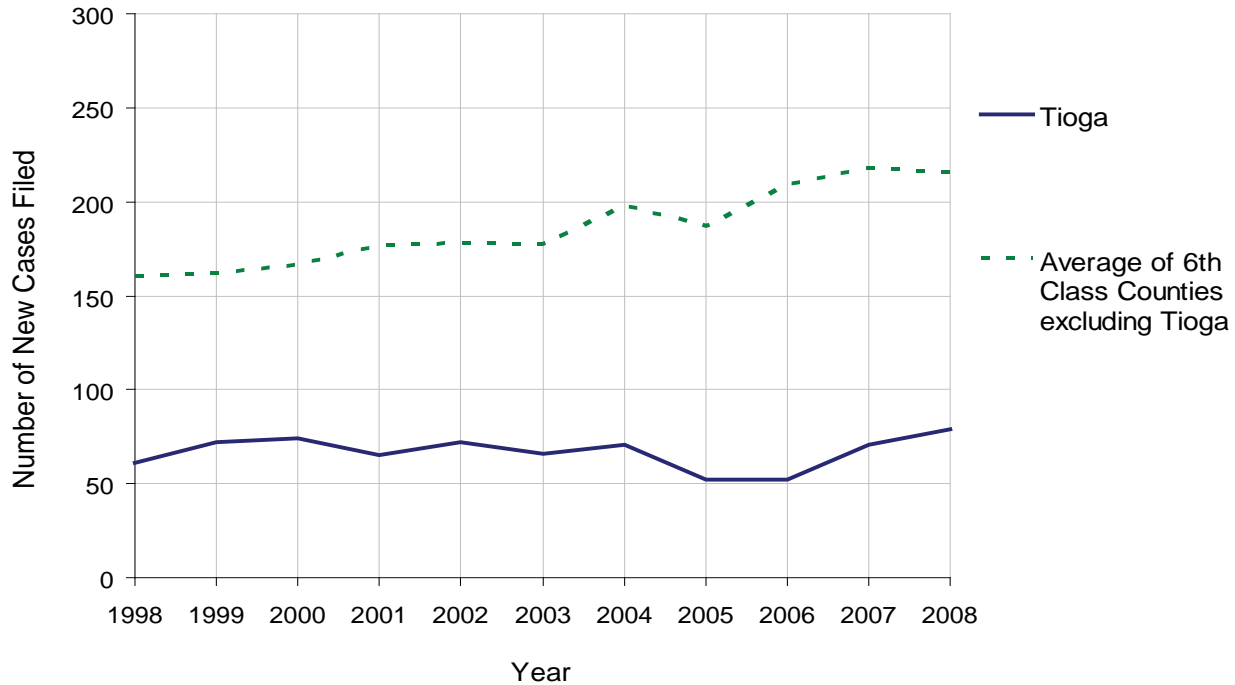
TIOGA COUNTY

2008 Population Estimate: 40,574
 Class of County: 6th
 No. of Common Pleas Court Judgeships: 1



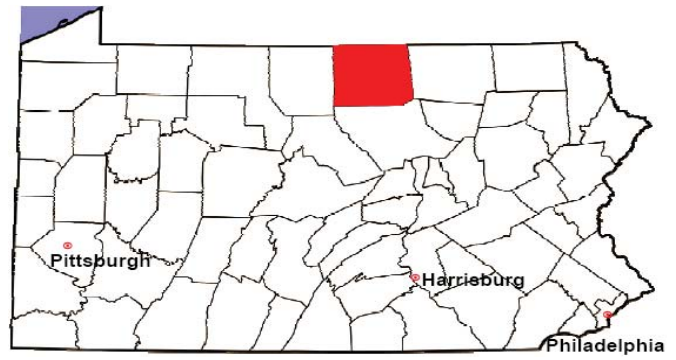
2008 Custody/Partial Custody/Visitation	No. of Petitions	%
Cases Pending 1/1/08	11	
New Cases Filed in '08	79	
Cases Available for Processing	90	
Processed By:		
Judge	0	0.0%
Non-Judicial Officer	73	100.0%
Other	0	0.0%
Cases Processed	73	100.0%
Cases Pending 12/31/08	17	

Custody/Partial Custody/Visitation New Cases Filed
 1998-2008



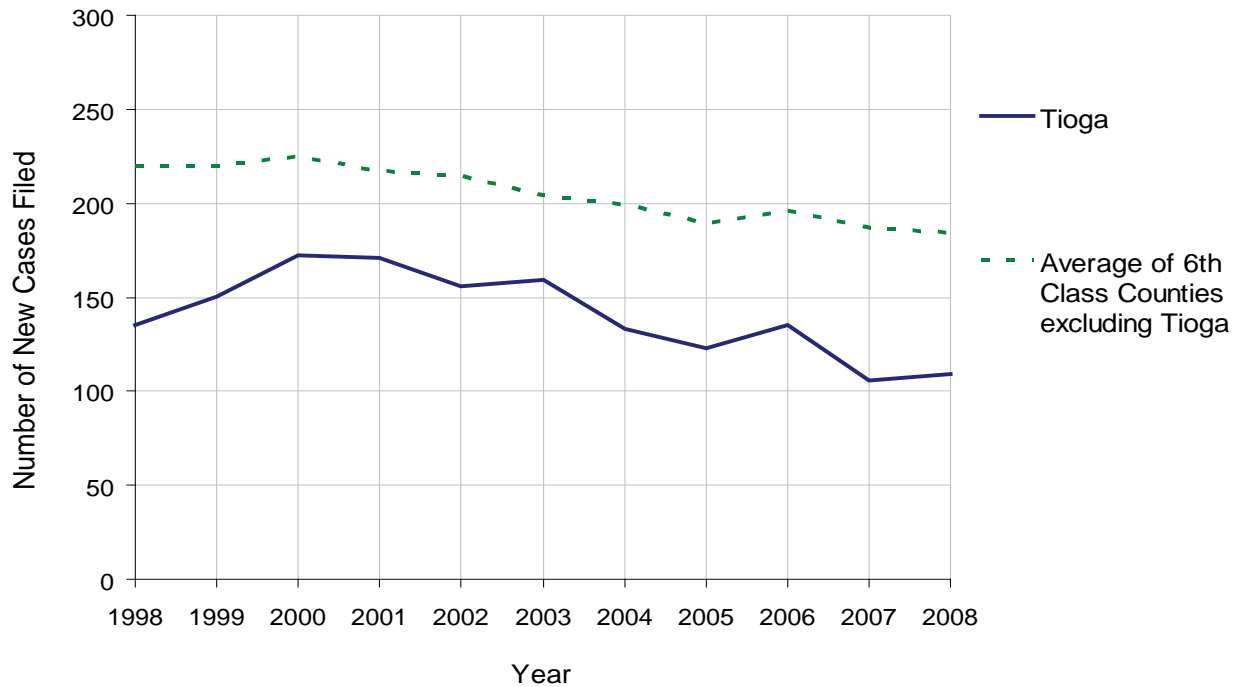
TIOGA COUNTY

2008 Population Estimate: 40,574
 Class of County: 6th
 No. of Common Pleas Court Judgeships: 1



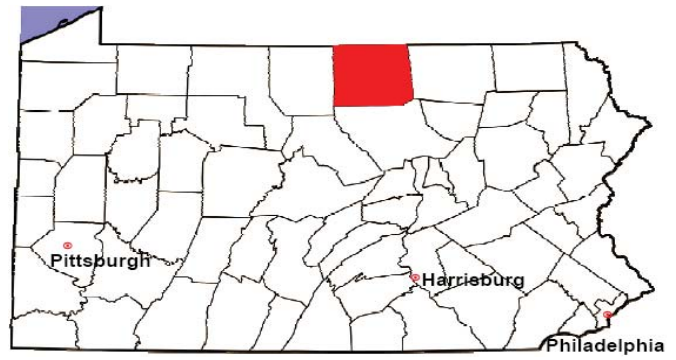
2008 Divorce	No. of Petitions	%
Cases Pending 1/1/08	8	
New Cases Filed in '08	109	
Cases Available for Processing	117	
Processed By:		
Contested Before a Judge	0	0.0%
Contested Before a Master	0	0.0%
Uncontested	108	100.0%
Other	0	0.0%
Cases Processed	108	100.0%
Cases Pending 12/31/08	9	

Divorce New Cases Filed, 1998-2008



TIOGA COUNTY

2008 Population Estimate: 40,574
 Class of County: 6th
 No. of Common Pleas Court Judgeships: 1



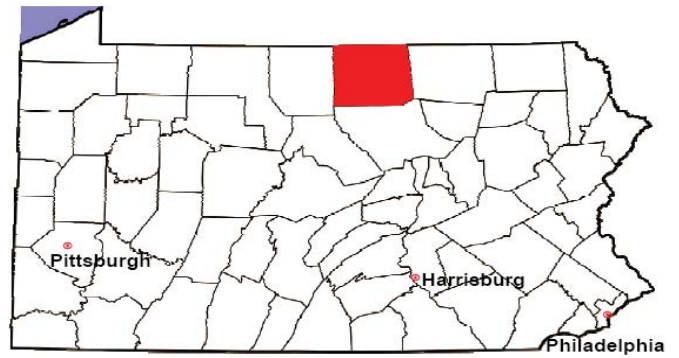
2008 Juvenile Dependency Abuse/Neglect	No. of Petitions	%
Cases Pending 1/1/08	1	
New Cases Filed in '08	47	
Cases Available for Processing	48	
Processed By:		
Judge	43	93.5%
Non-Judicial Officer	0	0.0%
Other	3	6.5%
Cases Processed	46	100.0%
Cases Pending 12/31/08	2	

Abuse/Neglect New Cases Filed, 2000-2008



TIOGA COUNTY

2008 Population Estimate: 40,574
Class of County: 6th
No. of Common Pleas Court Judgeships: 1



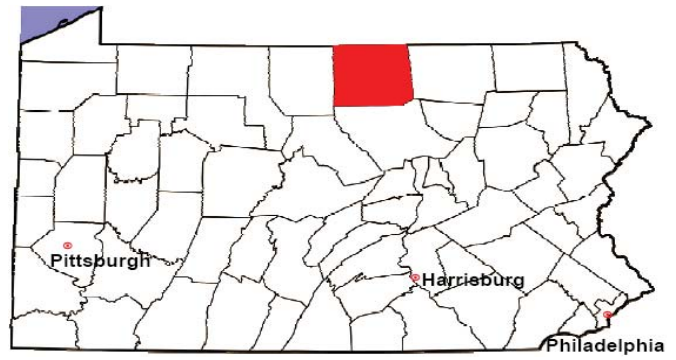
2008 Juvenile Dependency Status Offenses

Not Applicable:

In some counties, status offense petitions are not filed.

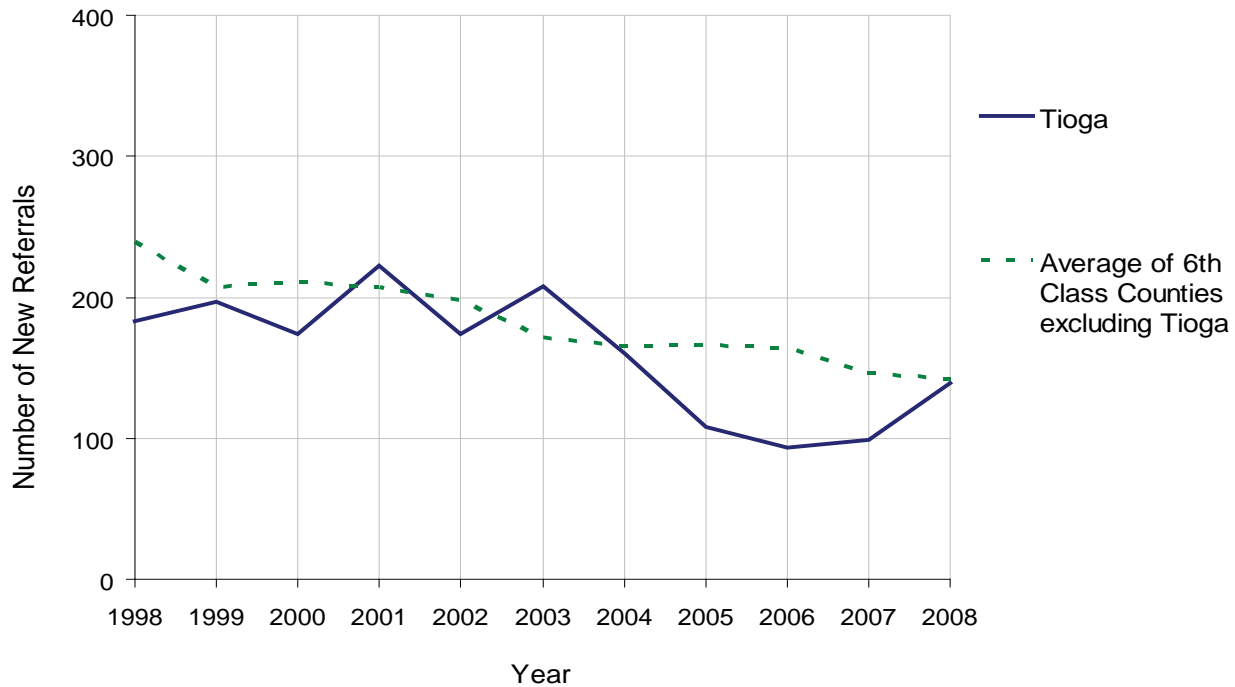
TIOGA COUNTY

2008 Population Estimate: 40,574
 Class of County: 6th
 No. of Common Pleas Court Judgeships: 1



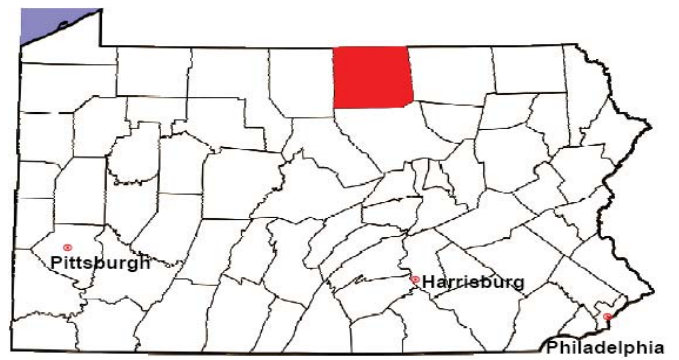
2008 Juvenile Delinquency	No. of Referrals	%
Cases Pending 1/1/08	20	
New Referrals in '08	139	
Cases Available for Processing	159	
Processed By:		
Judge	78	58.6%
Non-Judicial Officer	55	41.4%
Other	0	0.0%
Cases Processed	133	100.0%
Cases Pending 12/31/08	26	

Juvenile Delinquency New Referrals, 1998-2008



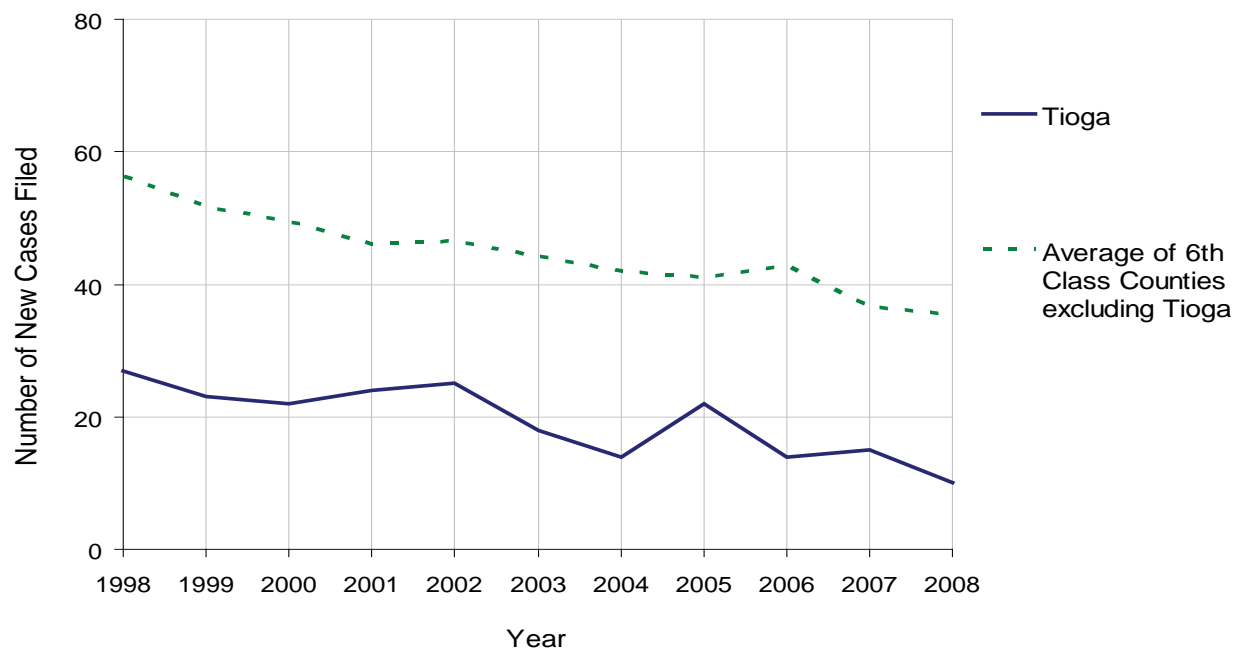
TIOGA COUNTY

2008 Population Estimate: 40,574
 Class of County: 6th
 No. of Common Pleas Court Judgeships: 1



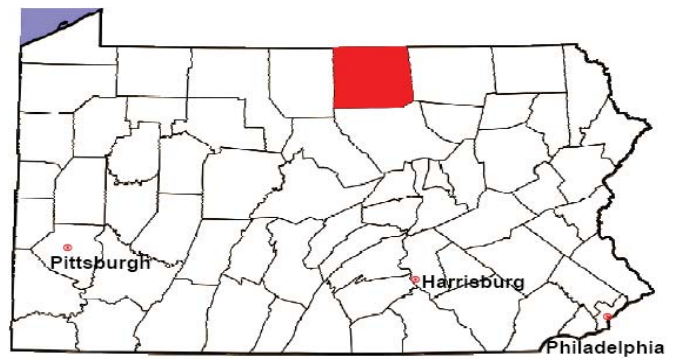
2008 Accounts	No. of Accounts	%
Cases Pending 1/1/08	0	
New Cases Filed in '08	10	
Cases Available for Processing	10	
Processed By:		
Contested before a Judge	2	20.0%
Contested before a Non-Judicial Officer	0	0.0%
Uncontested	8	80.0%
Other	0	0.0%
Cases Processed	10	100.0%
Cases Pending 12/31/08	0	

Accounts New Cases Filed, 1998-2008



TIOGA COUNTY

2008 Population Estimate: 40,574
 Class of County: 6th
 No. of Common Pleas Court Judgeships: 1

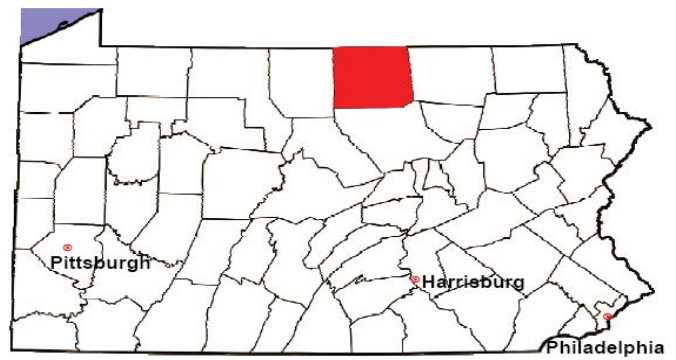


2008 Adoptions		No. of Cases	%
Cases Pending 1/1/08		0	
New Cases Filed in '08		13	
Cases Available for Processing		13	
Processed By:			
Contested before a Judge	Granted	0	0.0%
	Denied	0	0.0%
Uncontested	Granted	13	100.0%
	Denied	0	0.0%
Other		0	0.0%
Cases Processed		13	100.0%
Cases Pending 12/31/08		0	

Note: Prior to 2008, each petition was counted as one new case, regardless of the number of children listed on the petition. Starting in 2008, each child listed on a petition is counted as a separate case. Therefore, statistics for 2008 should not be compared with those for previous years.

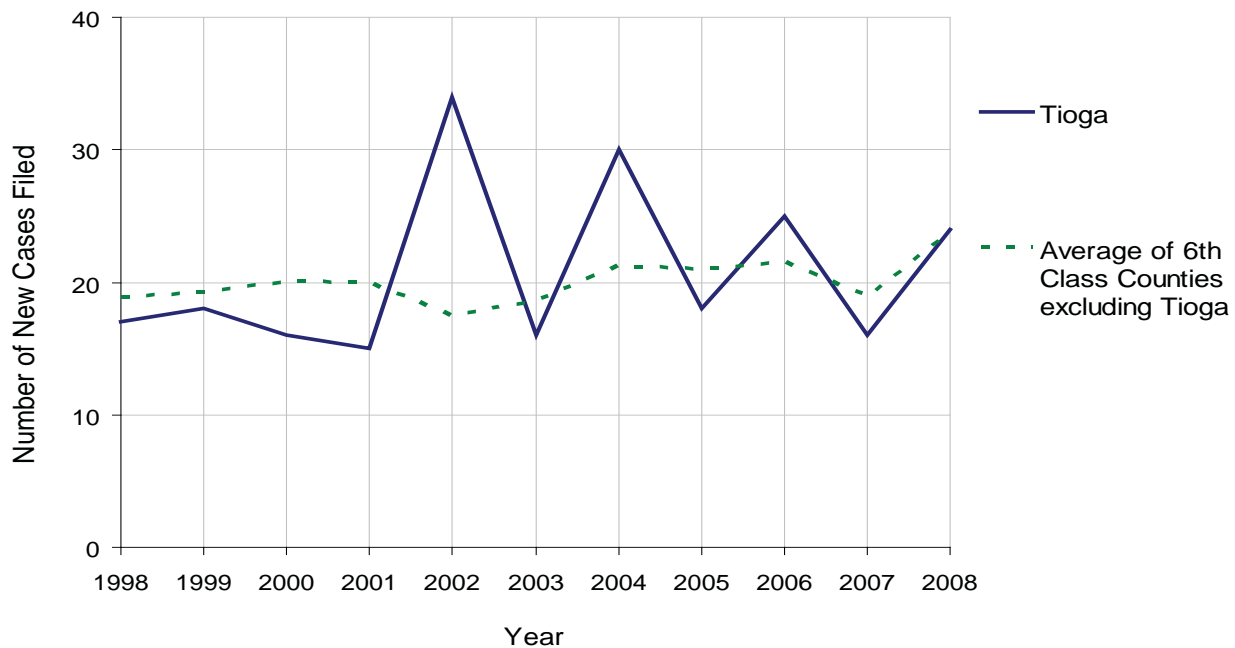
TIOGA COUNTY

2008 Population Estimate: 40,574
 Class of County: 6th
 No. of Common Pleas Court Judgeships: 1



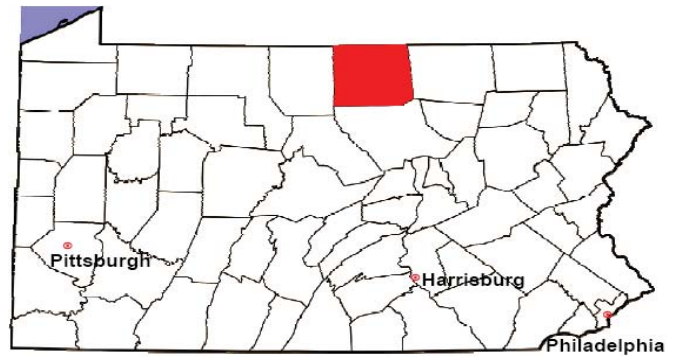
2008 Relinquishments/Terminations	No. of Petitions	%
Cases Pending 1/1/08	0	
New Cases Filed in '08	24	
Cases Available for Processing	24	
Processed By:		
Contested before a Judge	0	0.0%
Uncontested	19	100.0%
Other	0	0.0%
Cases Processed	19	100.0%
Cases Pending 12/31/08	5	

Relinquishments/Terminations New Cases Filed, 1998-2008



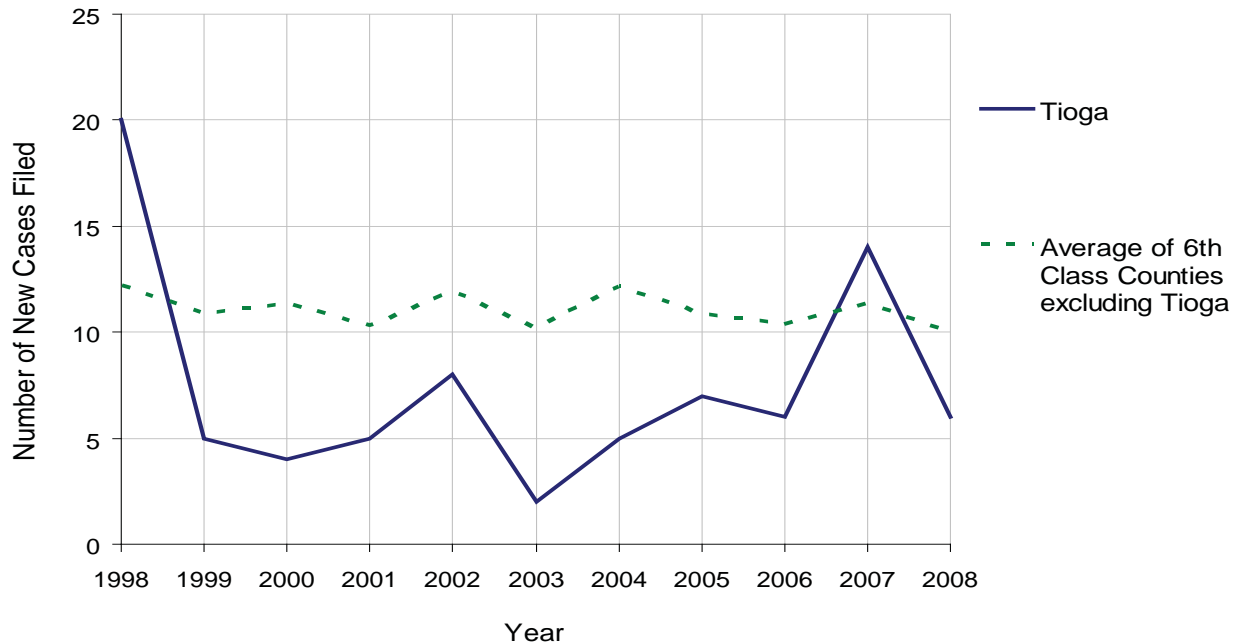
TIOGA COUNTY

2008 Population Estimate: 40,574
 Class of County: 6th
 No. of Common Pleas Court Judgeships: 1



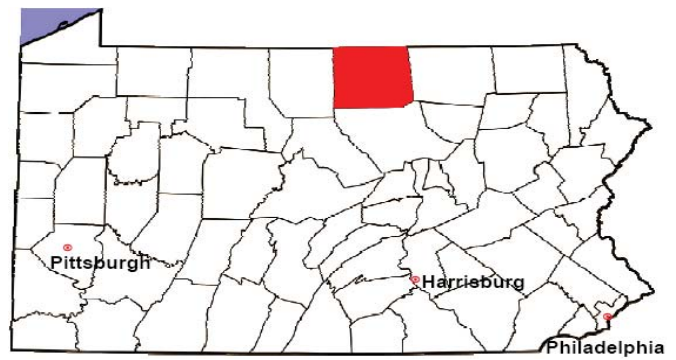
2008 Appointment of Guardians	No. of Petitions	%
Cases Pending 1/1/08	0	
New Cases Filed in '08	6	
Cases Available for Processing	6	
Processed By:		
Contested before a Judge	0	0.0%
Uncontested	4	66.7%
Other	2	33.3%
Cases Processed	6	100.0%
Cases Pending 12/31/08	0	

Appointment of Guardians New Cases Filed, 1998-2008



TIOGA COUNTY

2008 Population Estimate: 40,574
 Class of County: 6th
 No. of Common Pleas Court Judgeships: 1



2008 Jury Activity & Performance Measures		
A. Juror Days		427
B. Number Sent to Voir Dire		387
	Voir Dire Attendance Rate $(B/A * 100)$	90.6%
C. Number of Voir Dires Started		8
	Juror Days Per Voir Dire Starts (A/C)	53
D. Number of Jurors Selected		89
	Juror Selection Rate $(D/B * 100)$	23.0%
E. Number of Jury Trials Started		7
	Juror Days Per Trial Starts (A/E)	61
	Number of Voir Dires Not Resulting in Trial $(C-E)$	1
	Percent Voir Dires Not Resulting in Trial $(C-E)/C * 100$	12.5%
F. Pool Days		9
G. Zero Panel Days		1
	Percent Zero Panel Days $(G/F * 100)$	11.1%
H. Total Juror Fees Incurred		\$6,447
	Average Juror Fees Per Trial (H/E)	\$921

Average Juror Fees Per Trial, 1998-2008

