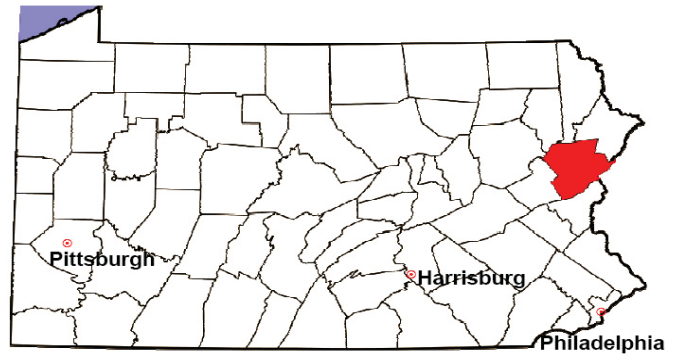


MONROE COUNTY

2008 Population Estimate: 165,058

Class of County: 5th

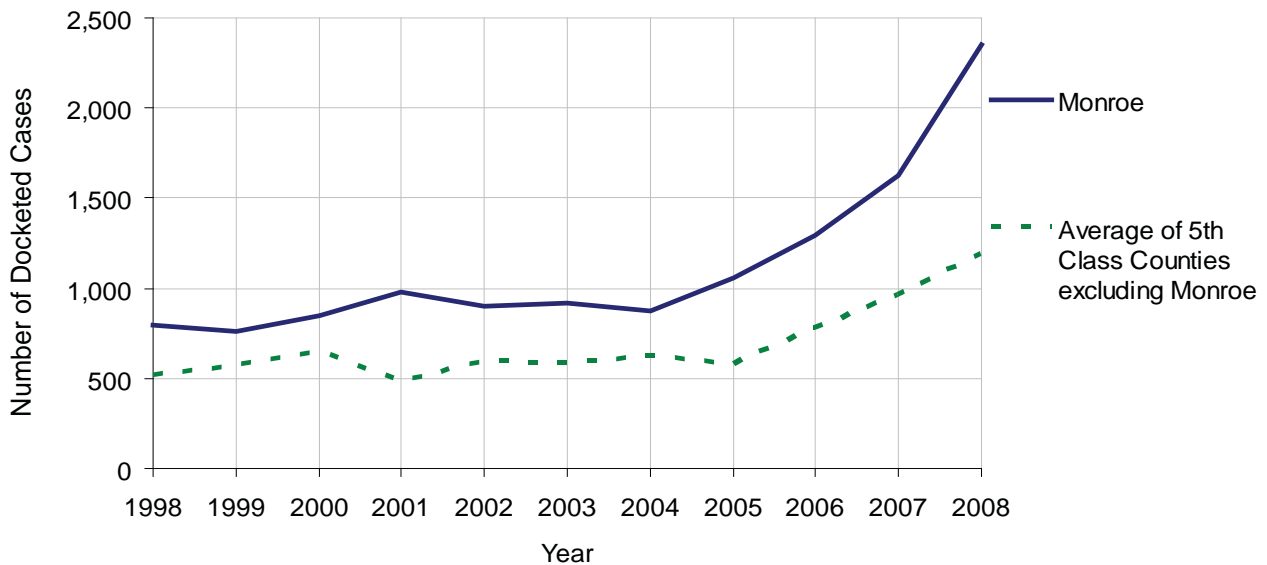
No. of Common Pleas Court Judgeships: 6



2008 Civil		Civil Action		
Docketed Cases		2,354		
Arbitrated Cases		127		
Trial-Ready Cases:		Civil Action	Other	Total
Cases Pending 1/1/08		30	7	37
Became Trial Ready in '08		74	3	77
Restored to Trial List		0	0	0
Appeals from Arbitration		13	0	13
Cases Available for Trial		117	10	127
Disposed By:				
Settlement		31	3	34
Non-Jury Trial		16	0	16
Jury Trial		10	0	10
Stricken from Trial List		33	1	34
Other		4	1	5
Cases Disposed		94	5	99
Cases Pending 12/31/08		23	5	28

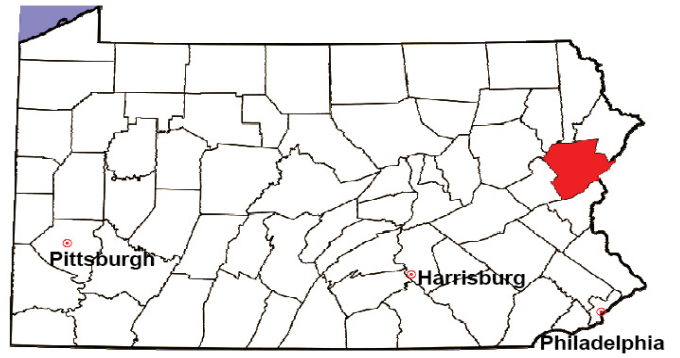
Age of Trial-Ready Cases as of 12/31/08 (Civil Action Only)		
0-6 months	23	100%
7-12 months	0	0%
13-18 months	0	0%
19-24 months	0	0%
25-30 months	0	0%
31-36 months	0	0%
Over 36 months	0	0%
Total	23	100%

Docketed Cases, 1998-2008



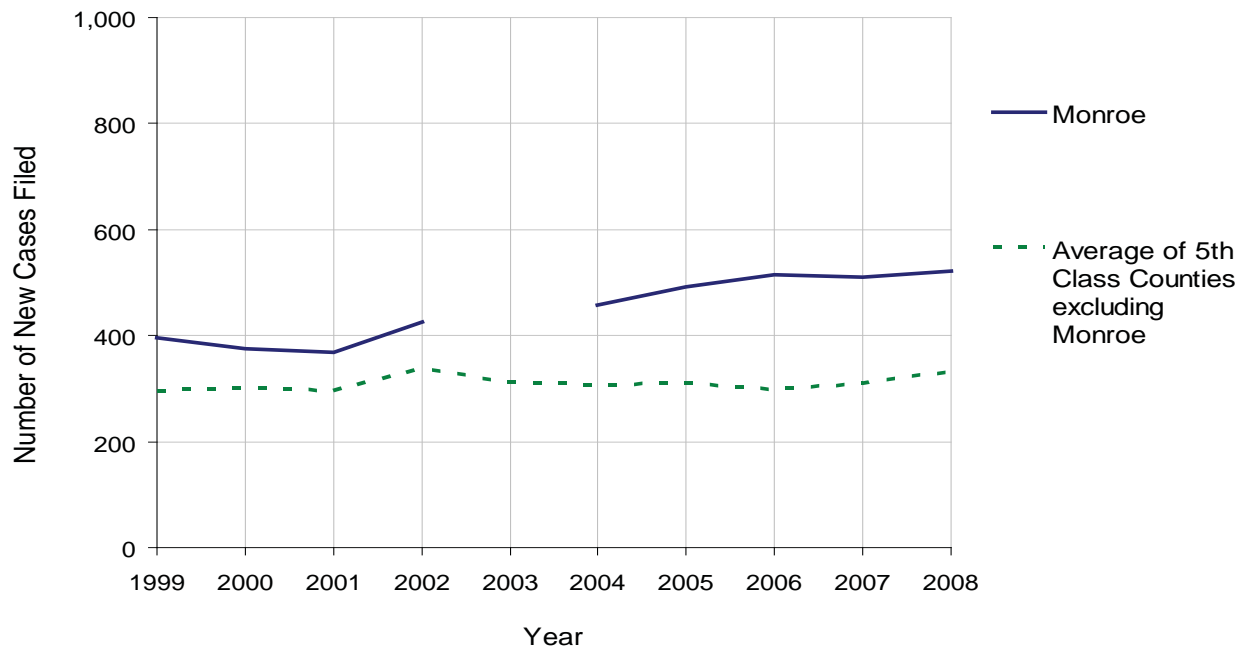
MONROE COUNTY

2008 Population Estimate: 165,058
 Class of County: 5th
 No. of Common Pleas Court Judgeships: 6



2008 Protection From Abuse	No. of Petitions	%
Cases Pending 1/1/08	28	
New Cases Filed in '08	522	
Cases Available for Processing	550	
Processed By:		
Final Order After Hearing	96	18.1%
Final Order by Stipulation or Agreement	182	34.3%
Dismissal	163	30.7%
Withdrawal	87	16.4%
Other	3	0.6%
Cases Processed	531	100.0%
Cases Pending 12/31/08	19	

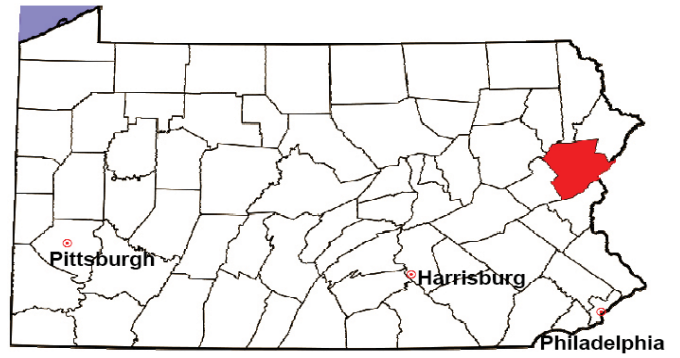
PFA New Cases Filed, 1999-2008



Note: PFA Data for 2003 are not available.

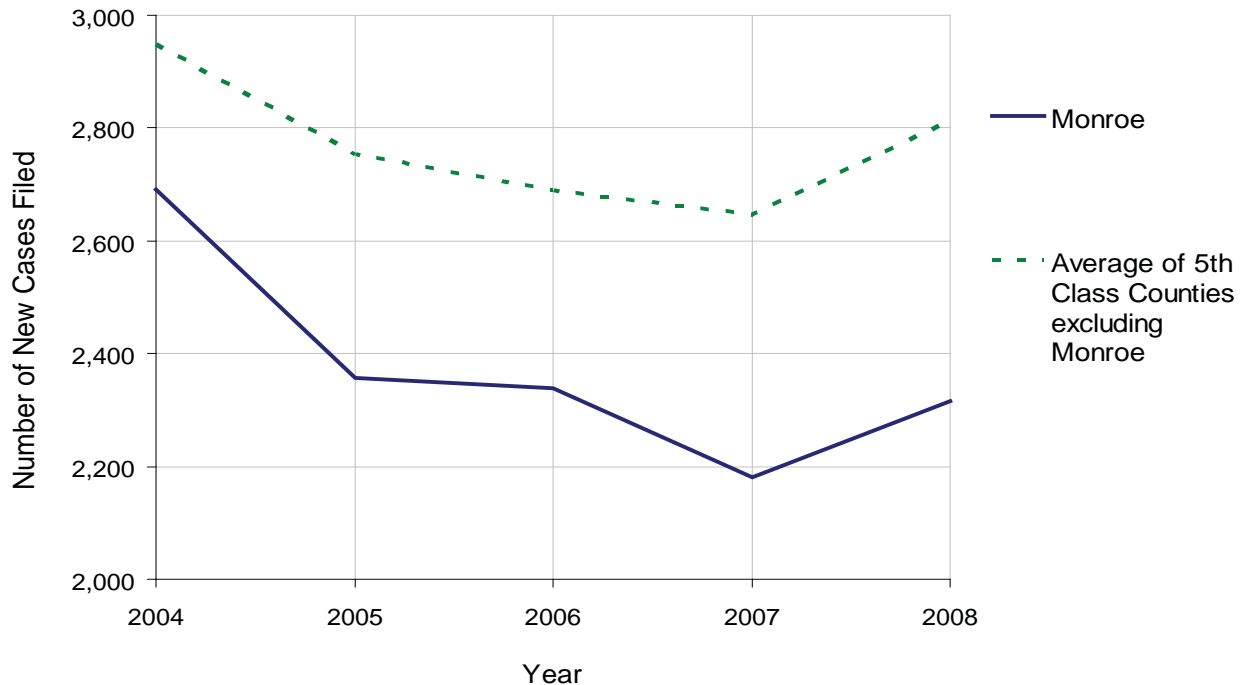
MONROE COUNTY

2008 Population Estimate: 165,058
 Class of County: 5th
 No. of Common Pleas Court Judgeships: 6



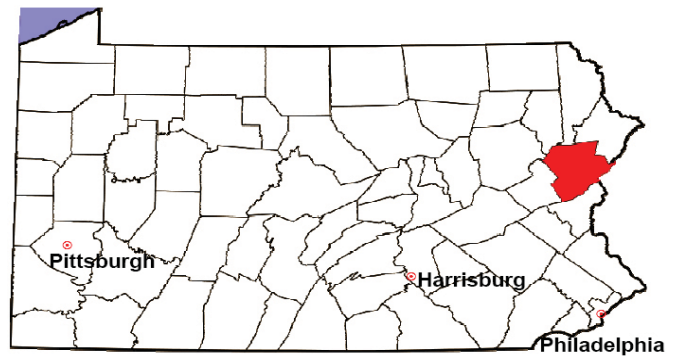
2008 Spousal & Child Support	No. of Petitions	%
Cases Pending 1/1/08	644	
New Cases Filed in '08	2,316	
Dockets Transferred In (+)	27	
Dockets Transferred Out (-)	56	
Cases Available for Processing	2,931	
Processed By:		
Judge	9	0.4%
Intake Officer	2,196	95.3%
Hearing Officer	100	4.3%
Other	0	0.0%
Cases Processed	2,305	100.0%
Cases Pending 12/31/08	626	

Spousal & Child Support New Cases Filed, 1998-2008



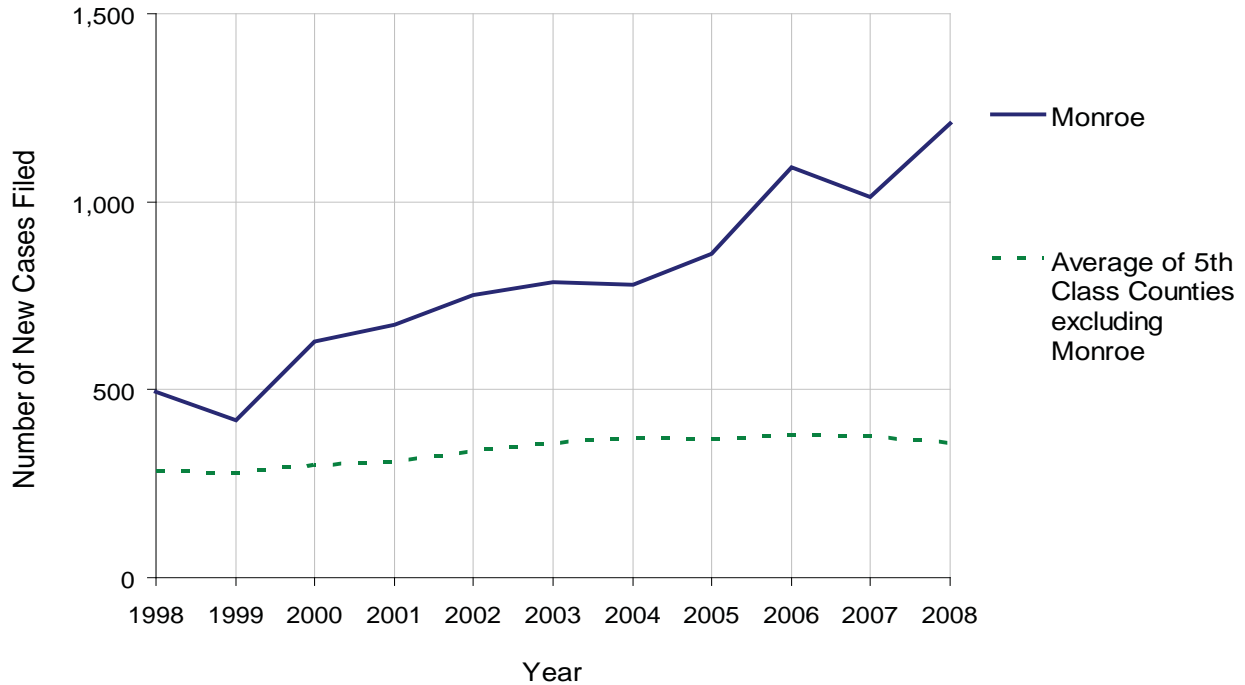
MONROE COUNTY

2008 Population Estimate: 165,058
 Class of County: 5th
 No. of Common Pleas Court Judgeships: 6



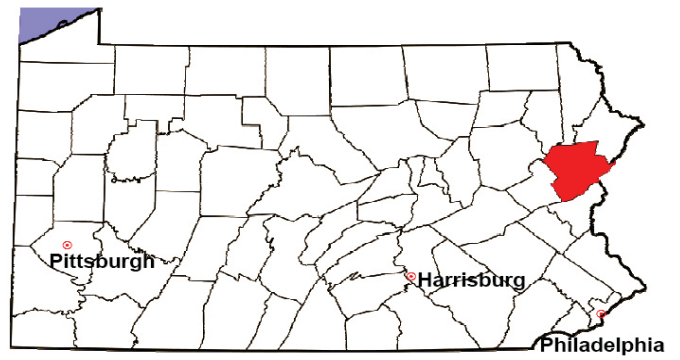
2008 Custody/Partial Custody/Visitation	No. of Petitions	%
Cases Pending 1/1/08	224	
New Cases Filed in '08	1,208	
Cases Available for Processing	1,432	
Processed By:		
Judge	163	15.4%
Non-Judicial Officer	770	72.6%
Other	127	12.0%
Cases Processed	1,060	100.0%
Cases Pending 12/31/08	372	

Custody/Partial Custody/Visitation New Cases Filed
 1998-2008



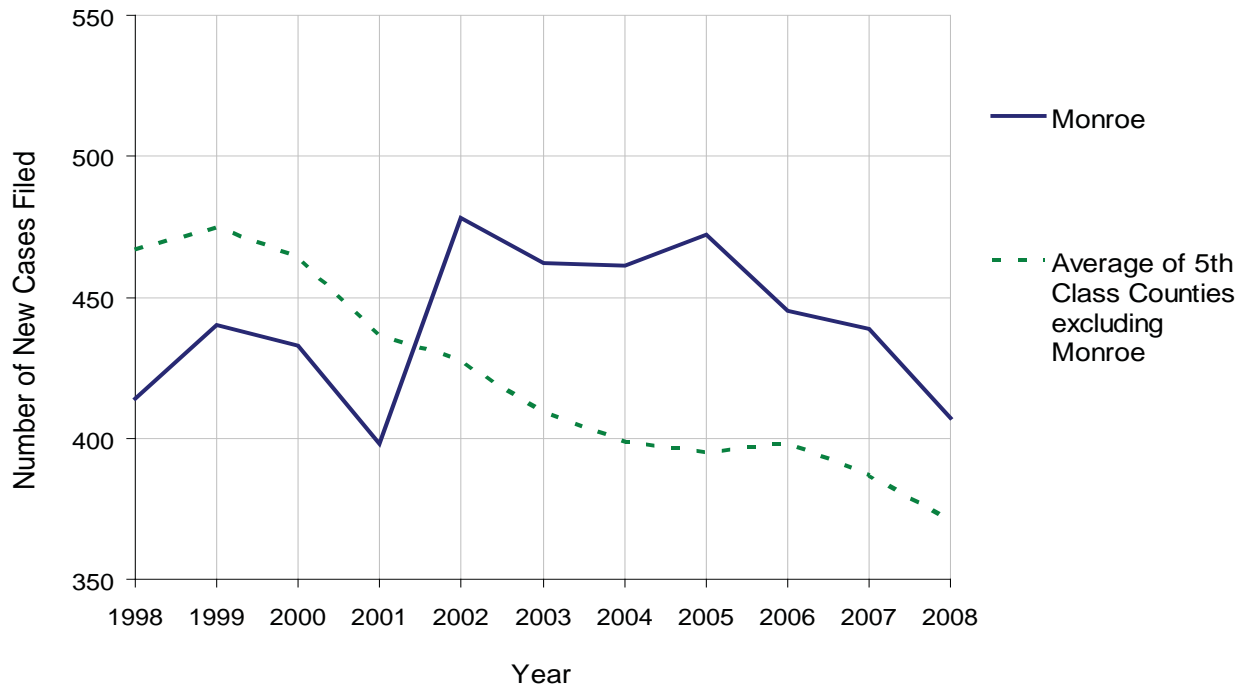
MONROE COUNTY

2008 Population Estimate: 165,058
 Class of County: 5th
 No. of Common Pleas Court Judgeships: 6



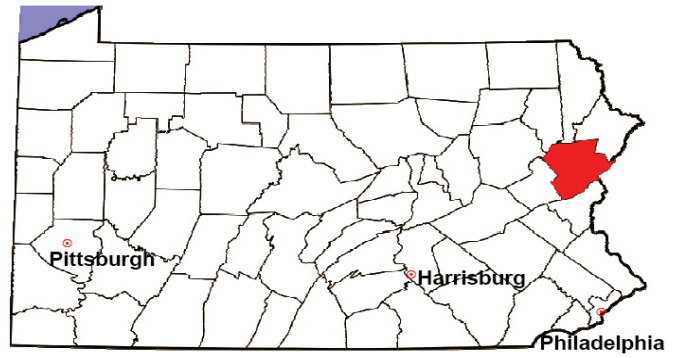
2008 Divorce	No. of Petitions	%
Cases Pending 1/1/08	924	
New Cases Filed in '08	407	
Cases Available for Processing	1,331	
Processed By:		
Contested Before a Judge	115	36.9%
Contested Before a Master	56	17.9%
Uncontested	135	43.3%
Other	6	1.9%
Cases Processed	312	100.0%
Cases Pending 12/31/08	1,019	

Divorce New Cases Filed, 1998-2008



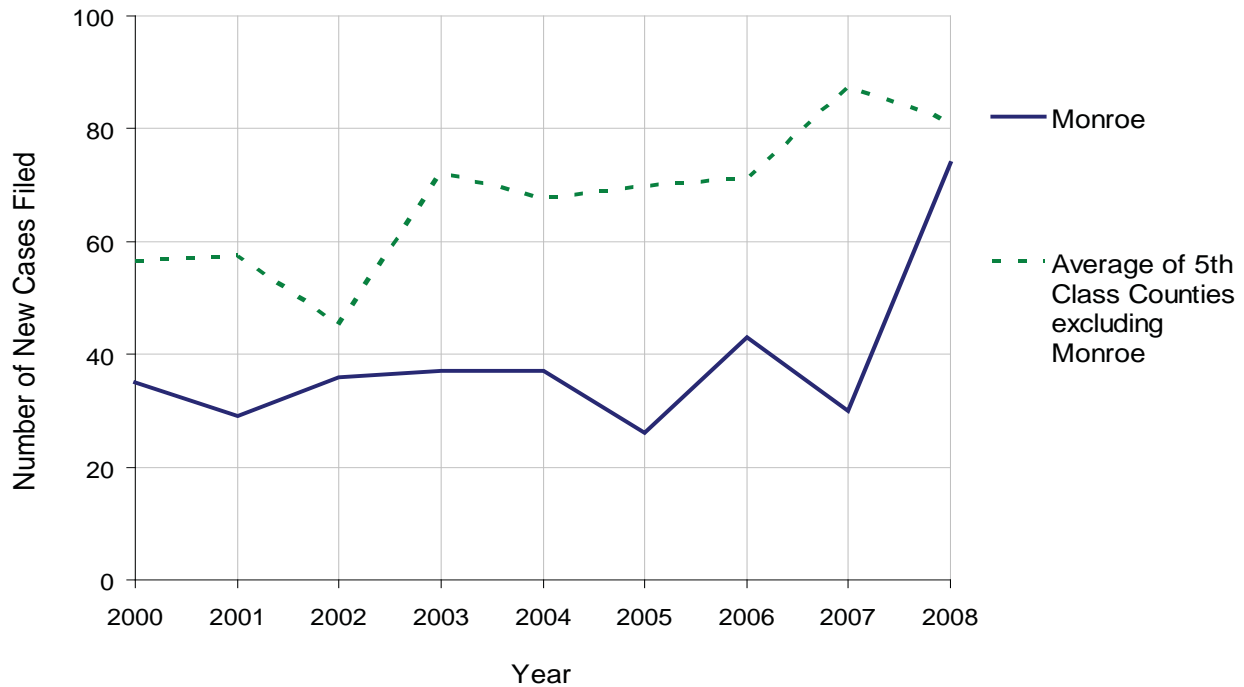
MONROE COUNTY

2008 Population Estimate: 165,058
 Class of County: 5th
 No. of Common Pleas Court Judgeships: 6



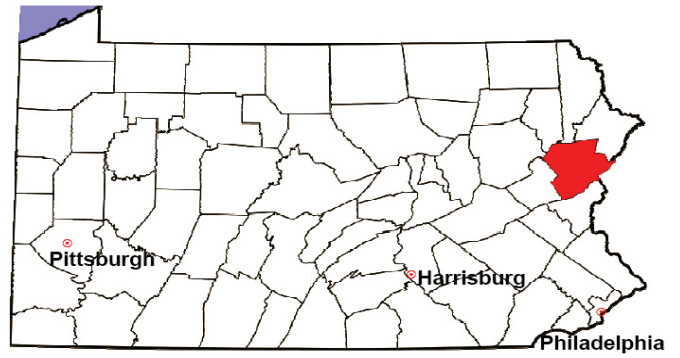
2008 Juvenile Dependency Abuse/Neglect	No. of Petitions	%
Cases Pending 1/1/08	0	
New Cases Filed in '08	74	
Cases Available for Processing	74	
Processed By:		
Judge	70	100.0%
Non-Judicial Officer	0	0.0%
Other	0	0.0%
Cases Processed	70	100.0%
Cases Pending 12/31/08	4	

Abuse/Neglect New Cases Filed, 2000-2008



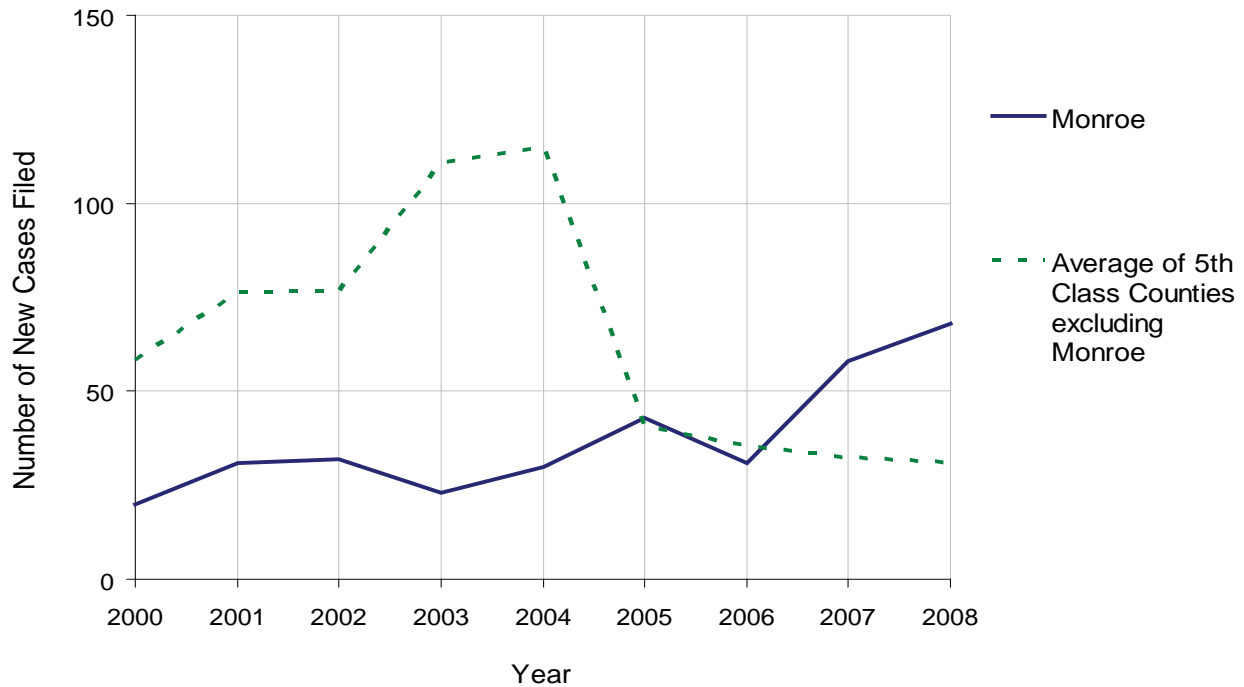
MONROE COUNTY

2008 Population Estimate: 165,058
 Class of County: 5th
 No. of Common Pleas Court Judgeships: 6



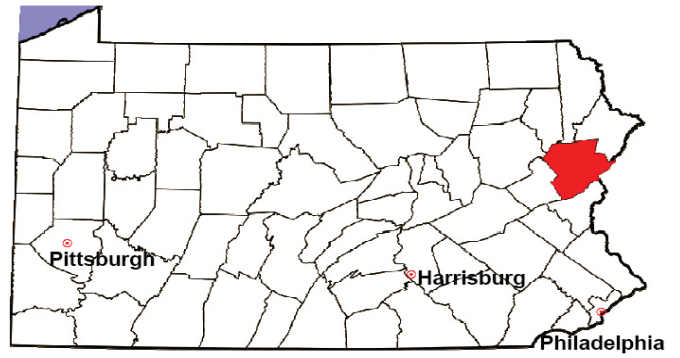
2008 Juvenile Dependency Status Offenses	No. of Petitions	%
Cases Pending 1/1/08	1	
New Cases Filed in '08	68	
Cases Available for Processing	69	
Processed By:		
Judge	69	100.0%
Non-Judicial Officer	0	0.0%
Other	0	0.0%
Cases Processed	69	100.0%
Cases Pending 12/31/08	0	

Status Offenses New Cases Filed, 2000-2008



MONROE COUNTY

2008 Population Estimate: 165,058
 Class of County: 5th
 No. of Common Pleas Court Judgeships: 6



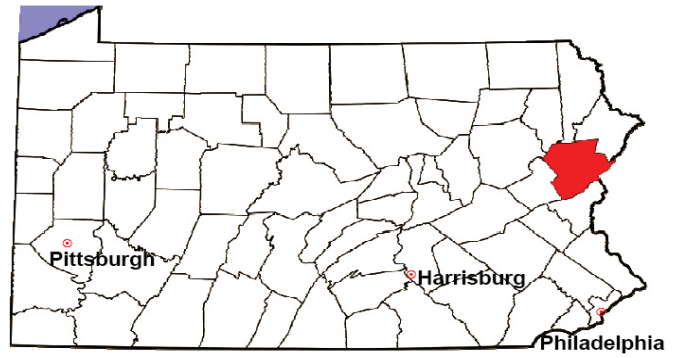
2008 Juvenile Delinquency	No. of Referrals	%
Cases Pending 1/1/08	290	
New Referrals in '08	477	
Cases Available for Processing	767	
Processed By:		
Judge	90	17.1%
Non-Judicial Officer	368	70.1%
Other	67	12.8%
Cases Processed	525	100.0%
Cases Pending 12/31/08	242	

Juvenile Delinquency New Referrals, 1998-2008



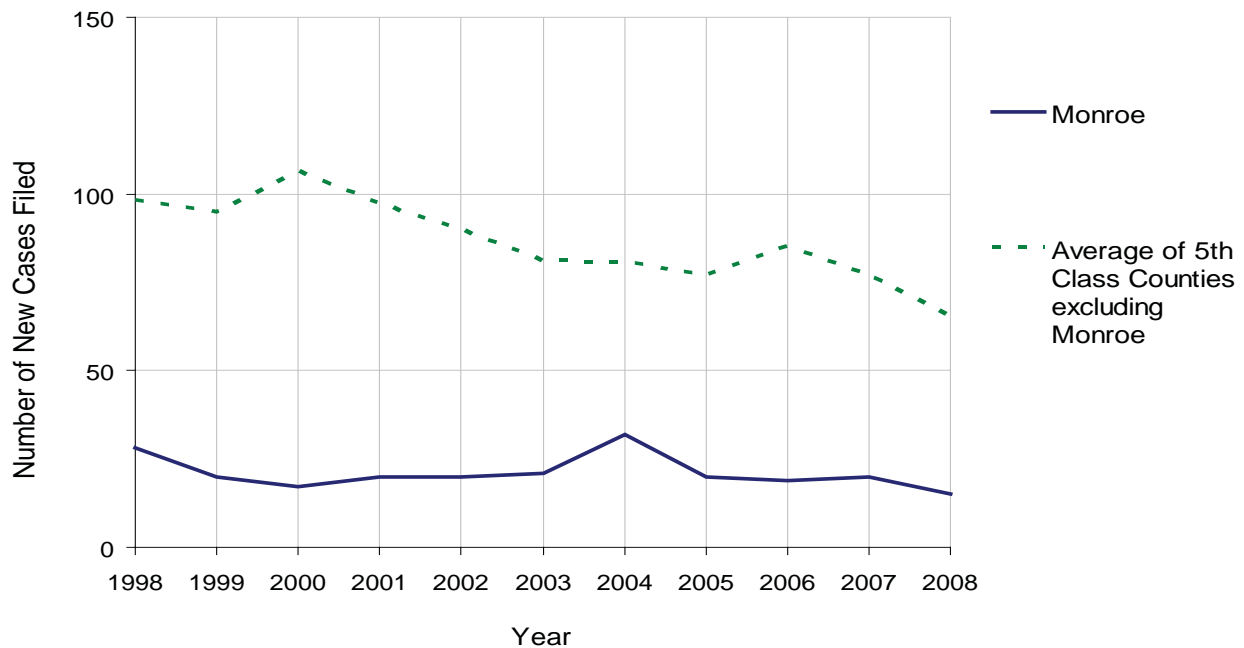
MONROE COUNTY

2008 Population Estimate: 165,058
 Class of County: 5th
 No. of Common Pleas Court Judgeships: 6



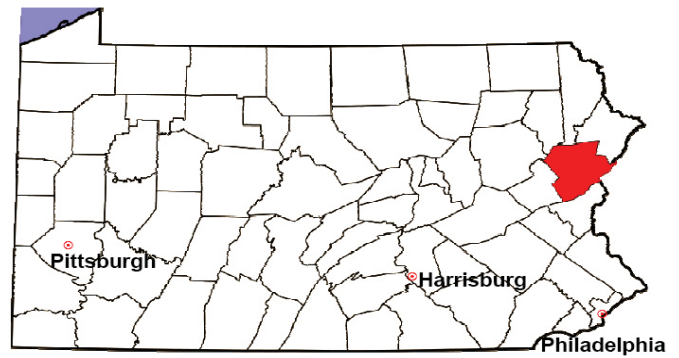
2008 Accounts	No. of Accounts	%
Cases Pending 1/1/08	9	
New Cases Filed in '08	15	
Cases Available for Processing	24	
Processed By:		
Contested before a Judge	2	12.5%
Contested before a Non-Judicial Officer	0	0.0%
Uncontested	14	87.5%
Other	0	0.0%
Cases Processed	16	100.0%
Cases Pending 12/31/08	8	

Accounts New Cases Filed, 1998-2008



MONROE COUNTY

2008 Population Estimate: 165,058
 Class of County: 5th
 No. of Common Pleas Court Judgeships: 6

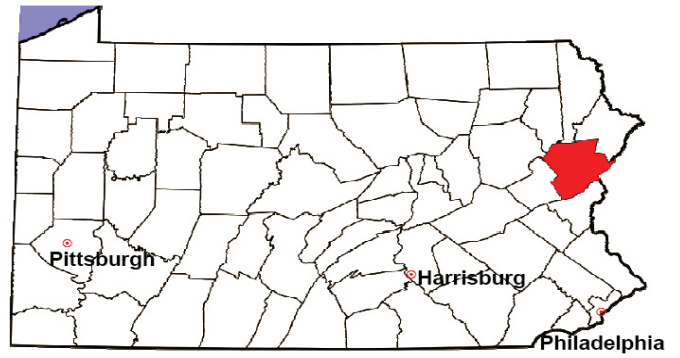


2008 Adoptions		No. of Cases	%
Cases Pending 1/1/08		5	
New Cases Filed in '08		43	
Cases Available for Processing		48	
Processed By:			
Contested before a Judge	Granted	2	5.0%
	Denied	0	0.0%
Uncontested	Granted	37	92.5%
	Denied	1	2.5%
Other		0	0.0%
Cases Processed		40	100.0%
Cases Pending 12/31/08		8	

Note: Prior to 2008, each petition was counted as one new case, regardless of the number of children listed on the petition. Starting in 2008, each child listed on a petition is counted as a separate case. Therefore, statistics for 2008 should not be compared with those for previous years.

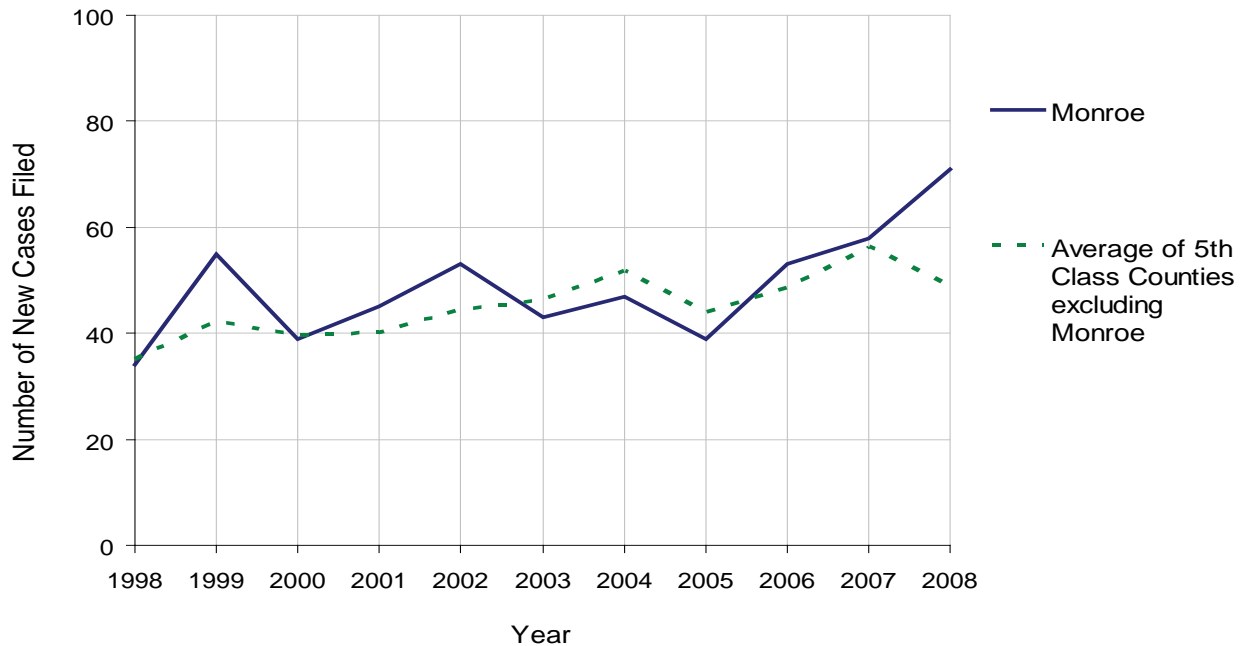
MONROE COUNTY

2008 Population Estimate: 165,058
 Class of County: 5th
 No. of Common Pleas Court Judgeships: 6



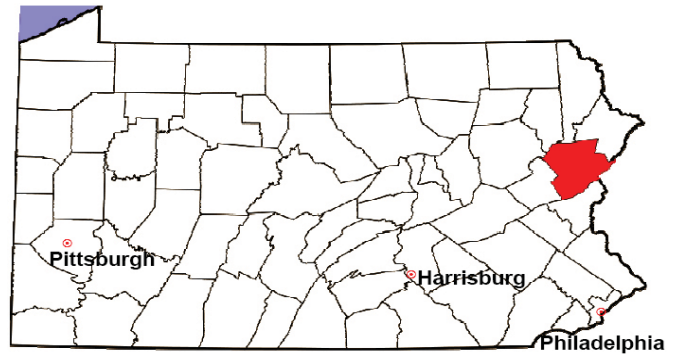
2008 Relinquishments/Terminations	No. of Petitions	%
Cases Pending 1/1/08	15	
New Cases Filed in '08	71	
Cases Available for Processing	86	
Processed By:		
Contested before a Judge	3	4.5%
Uncontested	51	77.3%
Other	12	18.2%
Cases Processed	66	100.0%
Cases Pending 12/31/08	20	

Relinquishments/Terminations New Cases Filed, 1998-2008



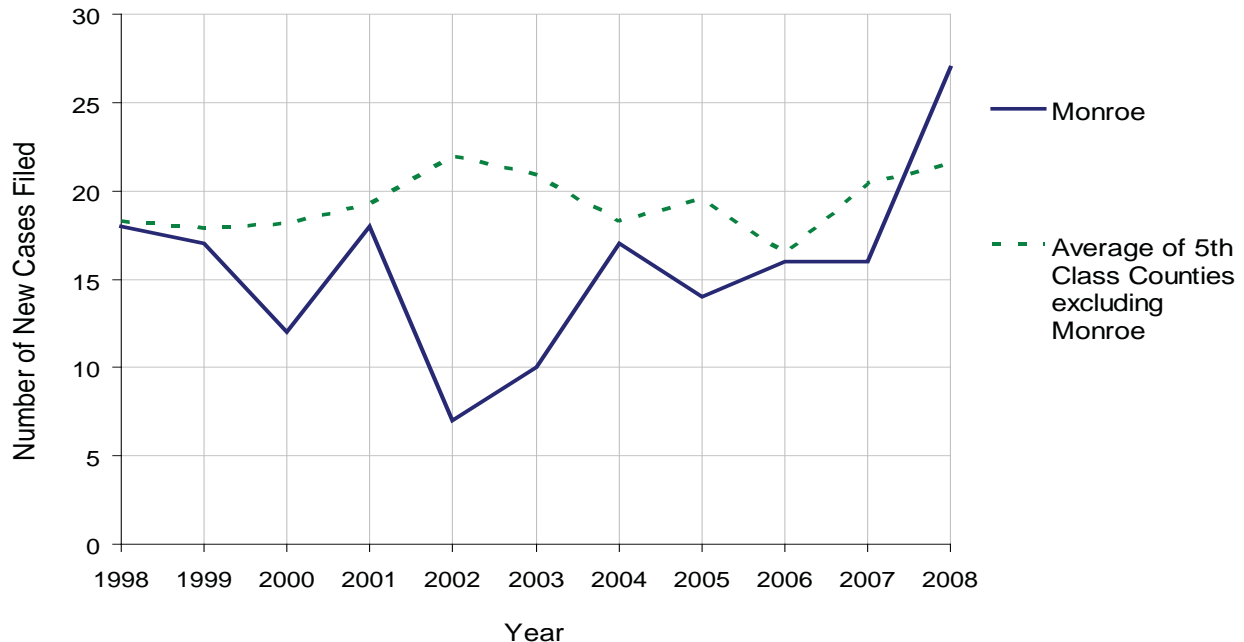
MONROE COUNTY

2008 Population Estimate: 165,058
 Class of County: 5th
 No. of Common Pleas Court Judgeships: 6



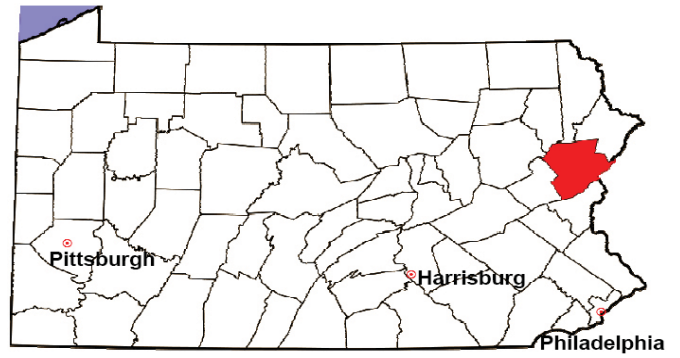
2008 Appointment of Guardians	No. of Petitions	%
Cases Pending 1/1/08	2	
New Cases Filed in '08	27	
Cases Available for Processing	29	
Processed By:		
Contested before a Judge	0	0.0%
Uncontested	22	95.7%
Other	1	4.3%
Cases Processed	23	100.0%
Cases Pending 12/31/08	6	

Appointment of Guardians New Cases Filed, 1998-2008



MONROE COUNTY

2008 Population Estimate: 165,058
 Class of County: 5th
 No. of Common Pleas Court Judgeships: 6



2008 Jury Activity & Performance Measures		
A. Juror Days	2,102	
B. Number Sent to Voir Dire	2,495	
Voir Dire Attendance Rate $(B/A * 100)$		118.7%
C. Number of Voir Dires Started	59	
Juror Days Per Voir Dire Starts (A/C)		36
D. Number of Jurors Selected	817	
Juror Selection Rate $(D/B * 100)$		32.7%
E. Number of Jury Trials Started	53	
Juror Days Per Trial Starts (A/E)		40
Number of Voir Dires Not Resulting in Trial $(C-E)$		6
Percent Voir Dires Not Resulting in Trial $(C-E)/C * 100$		10.2%
F. Pool Days	9	
G. Zero Panel Days	0	
Percent Zero Panel Days $(G/F * 100)$		0.0%
H. Total Juror Fees Incurred	\$51,262	
Average Juror Fees Per Trial (H/E)		\$967

Average Juror Fees Per Trial, 1998-2008

