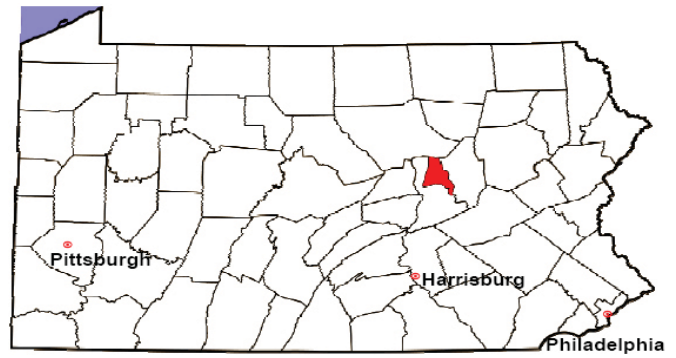


MONTOUR COUNTY

2008 Population Estimate: 17,705

Class of County: 8th

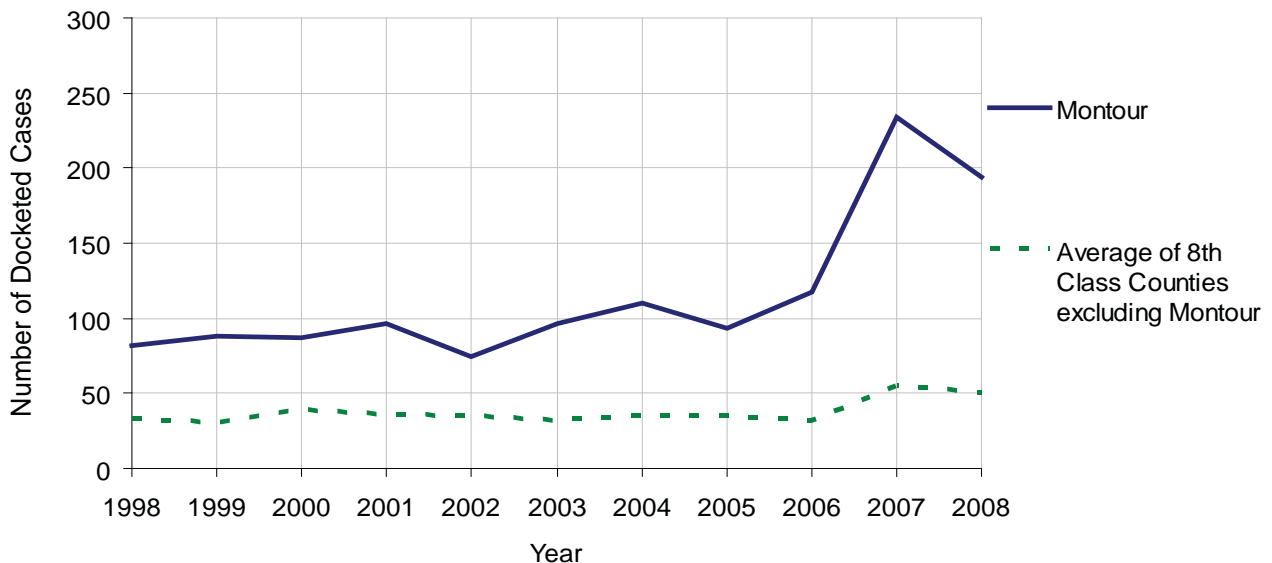
No. of Common Pleas Court Judgeships: 2
(Columbia and Montour combined)



2008 Civil	Civil Action		
Docketed Cases	194		
Arbitrated Cases	3		
Trial-Ready Cases:	Civil Action	Other	Total
Cases Pending 1/1/08	6	0	6
Became Trial Ready in '08	9	0	9
Restored to Trial List	1	0	1
Appeals from Arbitration	0	0	0
Cases Available for Trial	16	0	16
Disposed By:			
Settlement	10	0	10
Non-Jury Trial	0	0	0
Jury Trial	0	0	0
Stricken from Trial List	0	0	0
Other	2	0	2
Cases Disposed	12	0	12
Cases Pending 12/31/08	4	0	4

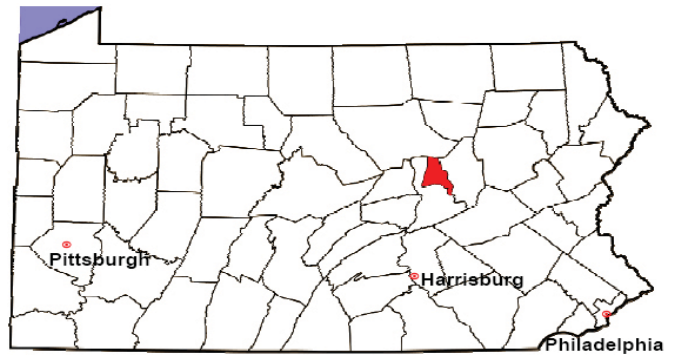
Age of Trial-Ready Cases as of 12/31/08 (Civil Action Only)		
0-6 months	3	75%
7-12 months	1	25%
13-18 months	0	0%
19-24 months	0	0%
25-30 months	0	0%
31-36 months	0	0%
Over 36 months	0	0%
Total	4	100%

Docketed Cases, 1998-2008



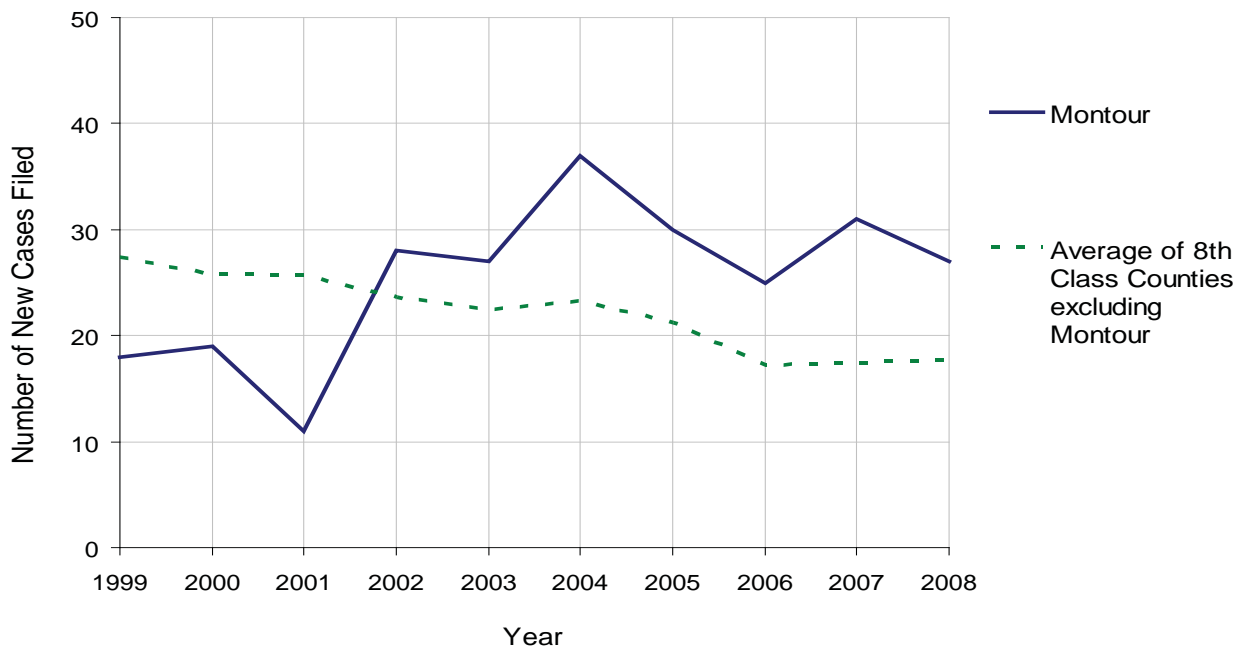
MONTOUR COUNTY

2008 Population Estimate: 17,705
 Class of County: 8th
 No. of Common Pleas Court Judgeships: 2
 (Columbia and Montour combined)



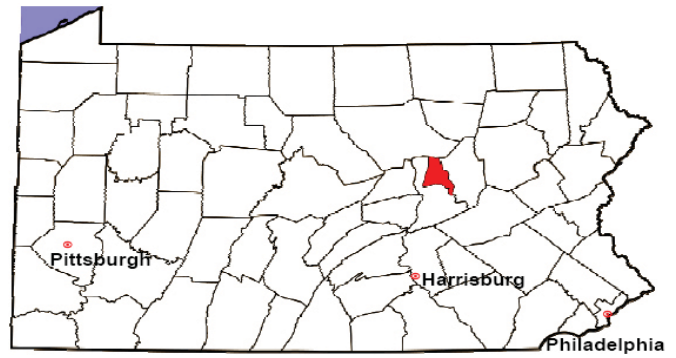
2008 Protection From Abuse	No. of Petitions	%
Cases Pending 1/1/08	4	
New Cases Filed in '08	27	
Cases Available for Processing	31	
Processed By:		
Final Order After Hearing	10	38.5%
Final Order by Stipulation or Agreement	8	30.8%
Dismissal	3	11.5%
Withdrawal	5	19.2%
Other	0	0.0%
Cases Processed	26	100.0%
Cases Pending 12/31/08	5	

PFA New Cases Filed, 1999-2008



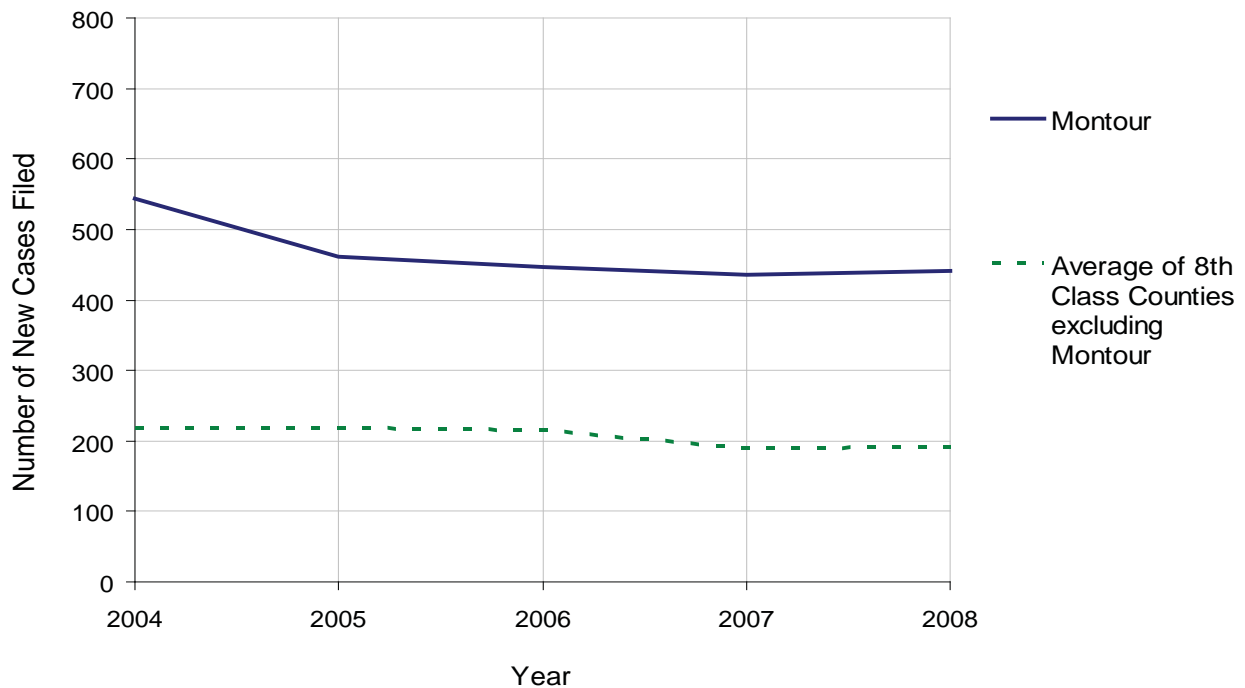
MONTOUR COUNTY

2008 Population Estimate: 17,705
 Class of County: 8th
 No. of Common Pleas Court Judgeships: 2
 (Columbia and Montour combined)



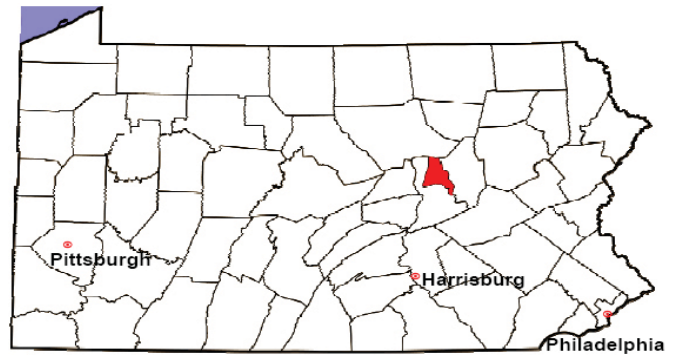
2008 Spousal & Child Support	No. of Petitions	%
Cases Pending 1/1/08	58	
New Cases Filed in '08	442	
Dockets Transferred In (+)	5	
Dockets Transferred Out (-)	7	
Cases Available for Processing	498	
Processed By:		
Judge	4	1.0%
Intake Officer	388	93.7%
Hearing Officer	22	5.3%
Other	0	0.0%
Cases Processed	414	100.0%
Cases Pending 12/31/08	84	

Spousal & Child Support New Cases Filed, 1998-2008



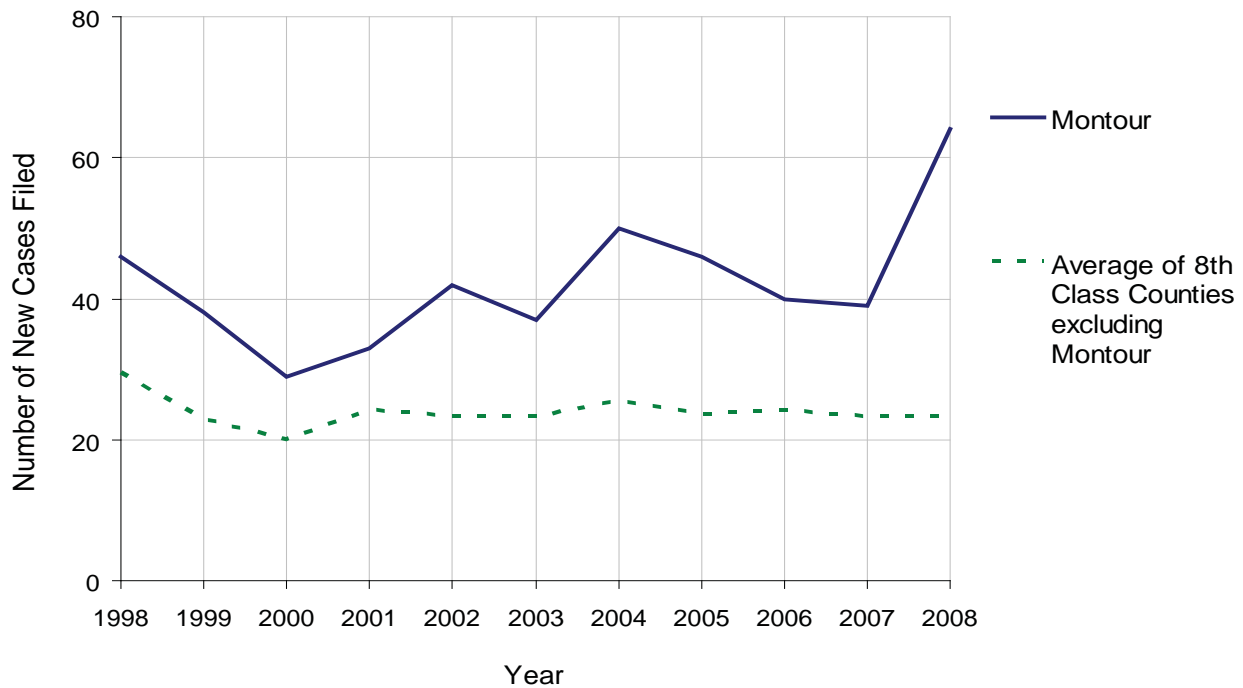
MONTOUR COUNTY

2008 Population Estimate: 17,705
 Class of County: 8th
 No. of Common Pleas Court Judgeships: 2
 (Columbia and Montour combined)



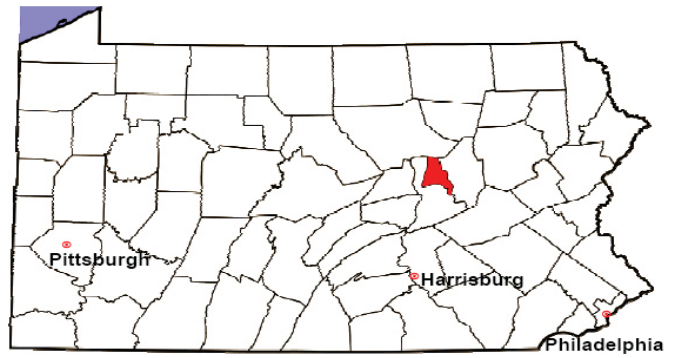
2008 Custody/Partial Custody/Visitation	No. of Petitions	%
Cases Pending 1/1/08	16	
New Cases Filed in '08	64	
Cases Available for Processing	80	
Processed By:		
Judge	6	9.7%
Non-Judicial Officer	55	88.7%
Other	1	1.6%
Cases Processed	62	100.0%
Cases Pending 12/31/08	18	

Custody/Partial Custody/Visitation New Cases Filed
 1998-2008



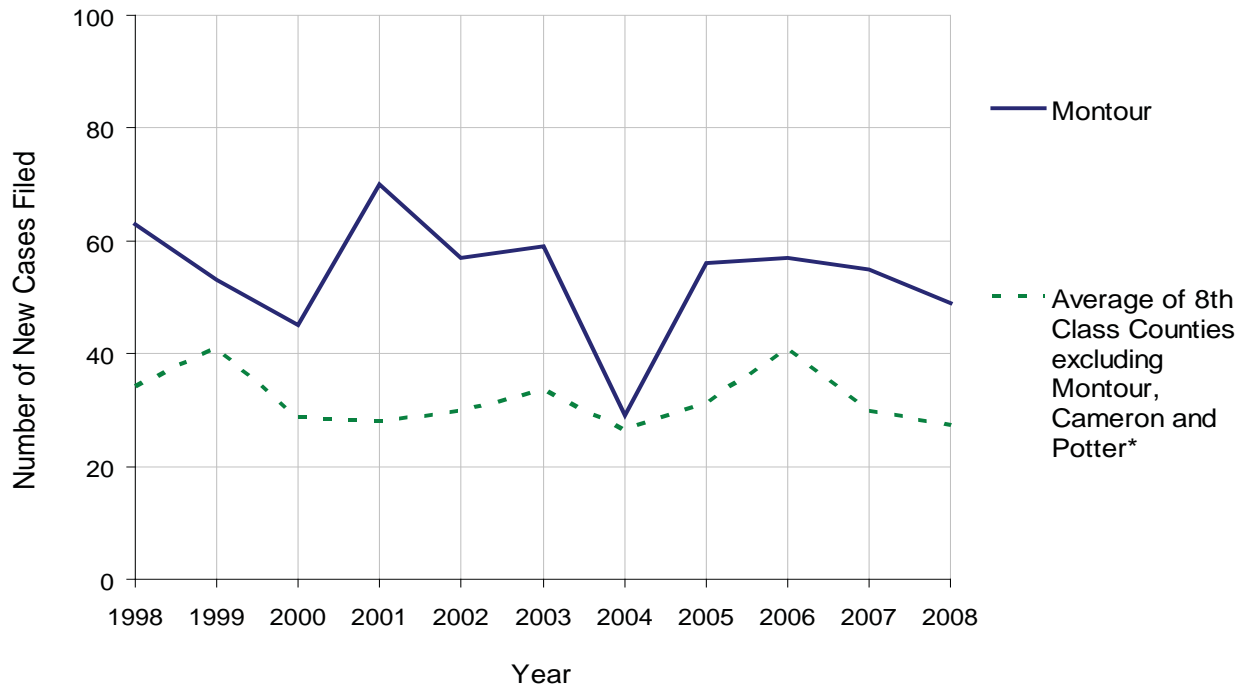
MONTOUR COUNTY

2008 Population Estimate: 17,705
 Class of County: 8th
 No. of Common Pleas Court Judgeships: 2
 (Columbia and Montour combined)



2008 Divorce	No. of Petitions	%
Cases Pending 1/1/08	42	
New Cases Filed in '08	49	
Cases Available for Processing	91	
Processed By:		
Contested Before a Judge	7	11.7%
Contested Before a Master	6	10.0%
Uncontested	46	76.7%
Other	1	1.7%
Cases Processed	60	100.0%
Cases Pending 12/31/08	31	

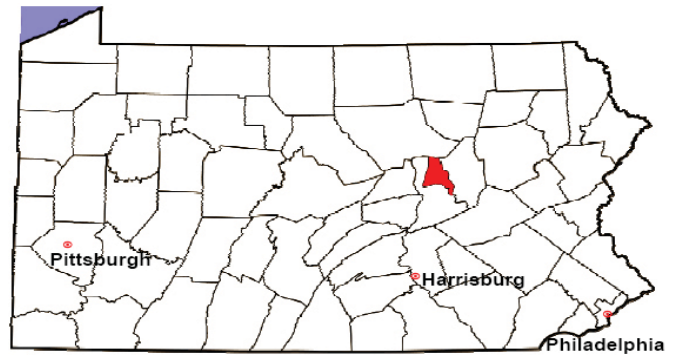
Divorce New Cases Filed, 1998-2008



* Due to a high number of out-of-district petitions, Cameron and Potter Counties have larger inventories than other 8th class counties. Therefore, it is not meaningful to compare Cameron and Potter Counties with other 8th class counties.

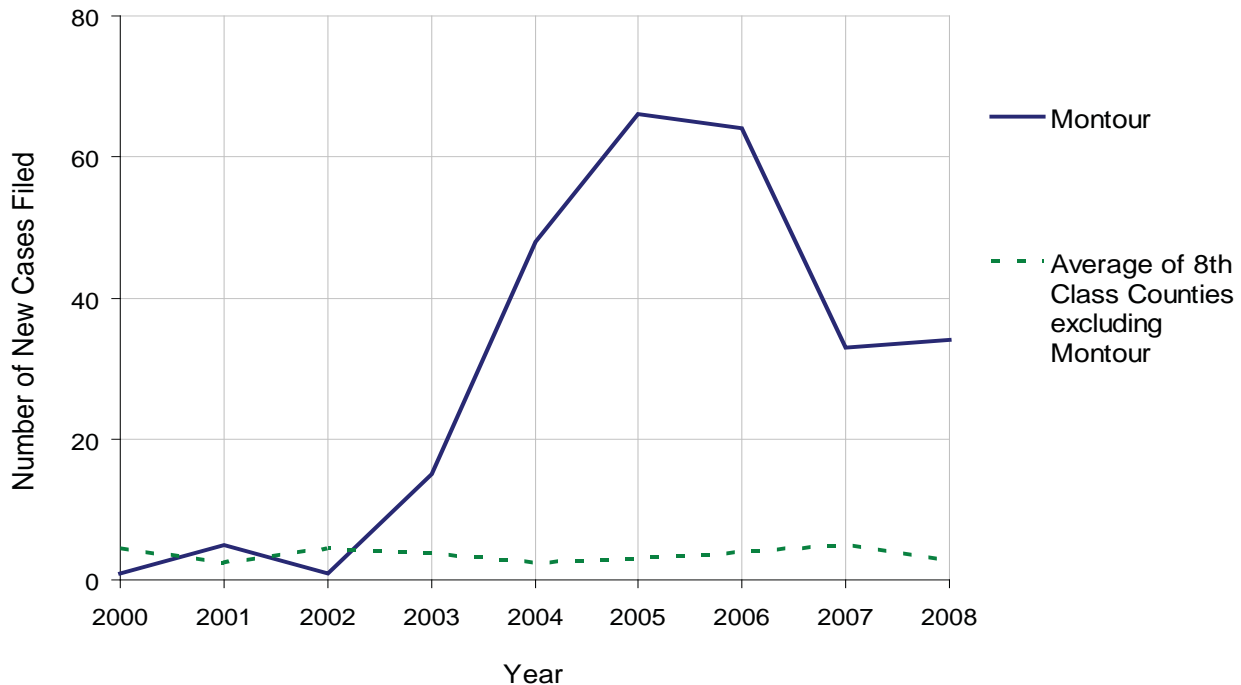
MONTOUR COUNTY

2008 Population Estimate: 17,705
 Class of County: 8th
 No. of Common Pleas Court Judgeships: 2
 (Columbia and Montour combined)



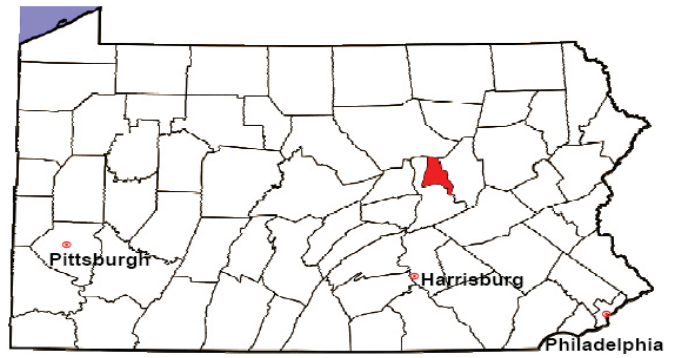
2008 Juvenile Dependency Abuse/Neglect	No. of Petitions	%
Cases Pending 1/1/08	0	
New Cases Filed in '08	34	
Cases Available for Processing	34	
Processed By:		
Judge	0	0.0%
Non-Judicial Officer	32	97.0%
Other	1	3.0%
Cases Processed	33	100.0%
Cases Pending 12/31/08	1	

Abuse/Neglect New Cases Filed, 2000-2008



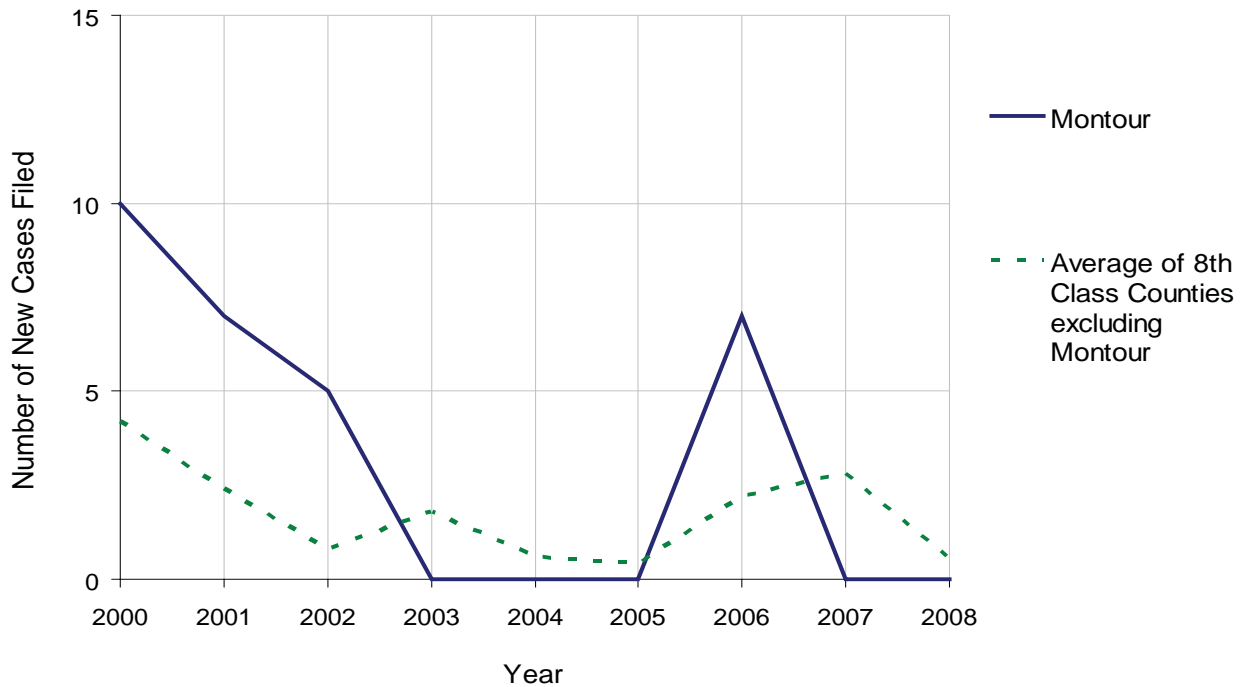
MONTOUR COUNTY

2008 Population Estimate: 17,705
 Class of County: 8th
 No. of Common Pleas Court Judgeships: 2
 (Columbia and Montour combined)



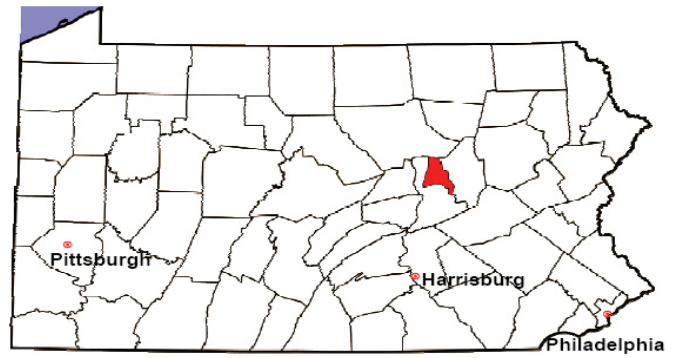
2008 Juvenile Dependency Status Offenses	No. of Petitions	%
Cases Pending 1/1/08	0	
New Cases Filed in '08	0	
Cases Available for Processing	0	
Processed By:		
Judge	0	
Non-Judicial Officer	0	
Other	0	
Cases Processed	0	
Cases Pending 12/31/08	0	

Status Offenses New Cases Filed, 2000-2008



MONTOUR COUNTY

2008 Population Estimate: 17,705
 Class of County: 8th
 No. of Common Pleas Court Judgeships: 2
 (Columbia and Montour combined)



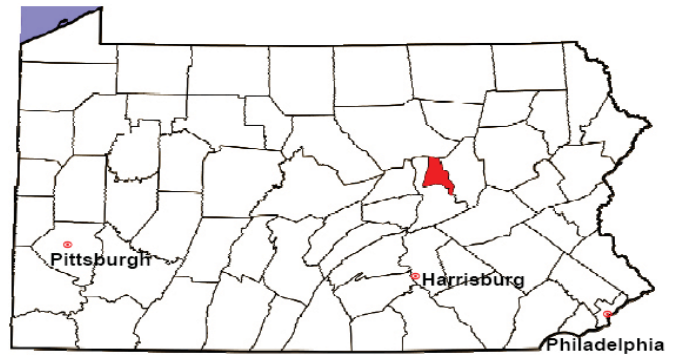
2008 Juvenile Delinquency	No. of Referrals	%
Cases Pending 1/1/08	7	
New Referrals in '08	43	
Cases Available for Processing	50	
Processed By:		
Judge	26	57.8%
Non-Judicial Officer	5	11.1%
Other	14	31.1%
Cases Processed	45	100.0%
Cases Pending 12/31/08	5	

Juvenile Delinquency New Referrals, 1998-2008



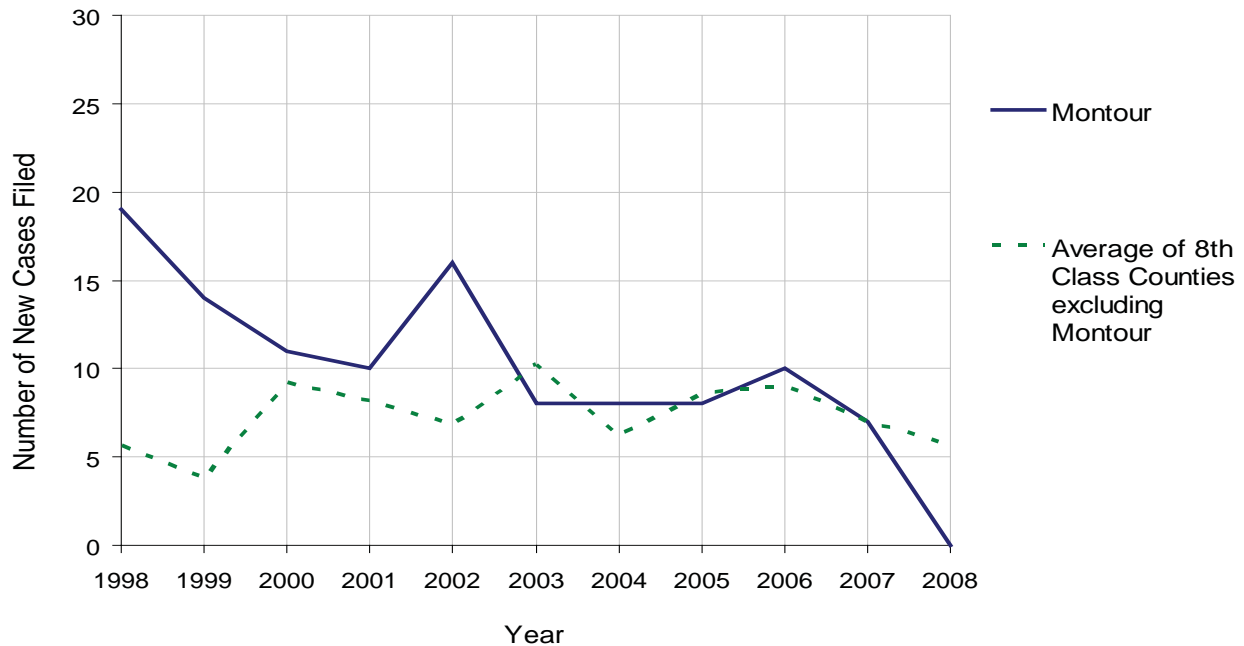
MONTOUR COUNTY

2008 Population Estimate: 17,705
 Class of County: 8th
 No. of Common Pleas Court Judgeships: 2
 (Columbia and Montour combined)



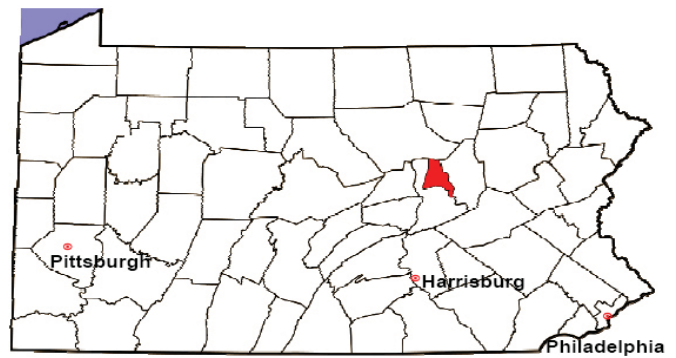
2008 Accounts	No. of Accounts	%
Cases Pending 1/1/08	0	
New Cases Filed in '08	0	
Cases Available for Processing	0	
Processed By:		
Contested before a Judge	0	
Contested before a Non-Judicial Officer	0	
Uncontested	0	
Other	0	
Cases Processed	0	
Cases Pending 12/31/08	0	

Accounts New Cases Filed, 1998-2008



MONTOUR COUNTY

2008 Population Estimate: 17,705
 Class of County: 8th
 No. of Common Pleas Court Judgeships: 2
 (Columbia and Montour combined)



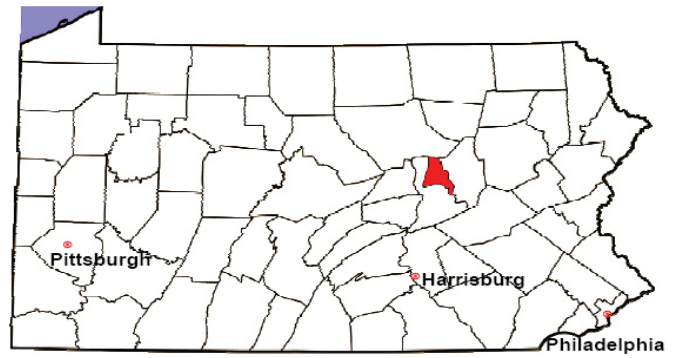
2008 Adoptions		No. of Cases	%
Cases Pending 1/1/08		9 ^(R)	
New Cases Filed in '08		13	
Cases Available for Processing		22	
Processed By:			
Contested before a Judge	Granted	0	0.0%
	Denied	0	0.0%
Uncontested	Granted	3	75.0%
	Denied	0	0.0%
Other		1	25.0%
Cases Processed		4	100.0%
Cases Pending 12/31/08		18	

(R) - Revised

Note: Prior to 2008, each petition was counted as one new case, regardless of the number of children listed on the petition. Starting in 2008, each child listed on a petition is counted as a separate case. Therefore, statistics for 2008 should not be compared with those for previous years.

MONTOUR COUNTY

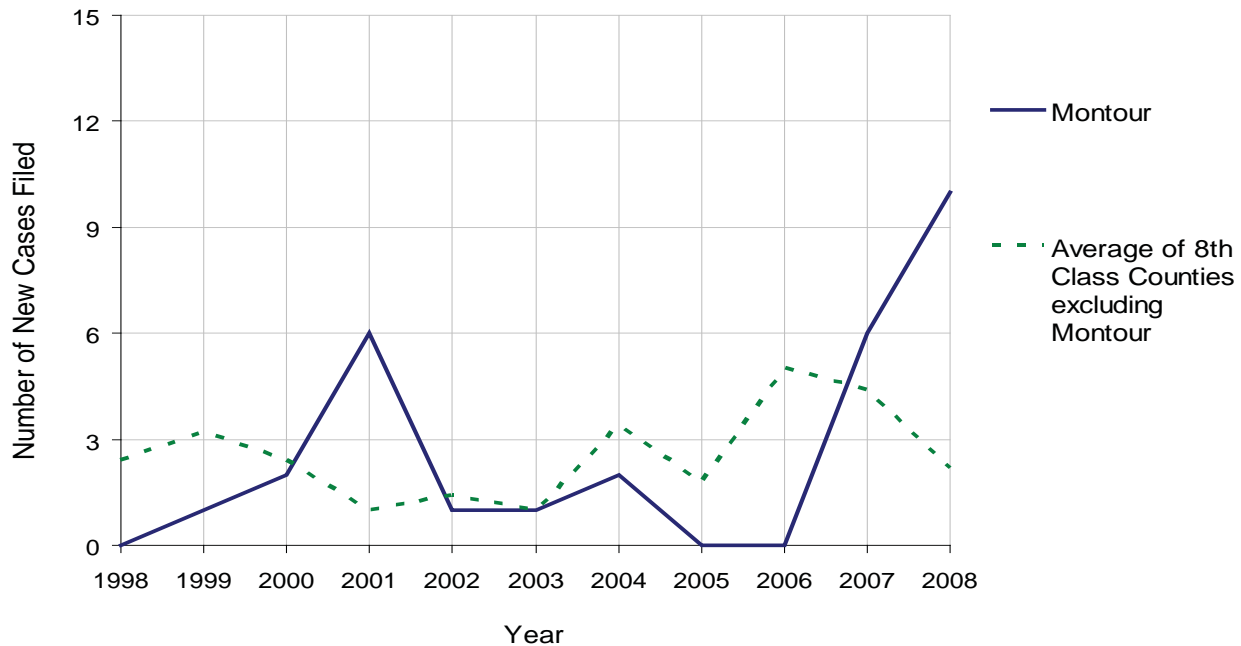
2008 Population Estimate: 17,705
 Class of County: 8th
 No. of Common Pleas Court Judgeships: 2
 (Columbia and Montour combined)



2008 Relinquishments/Terminations	No. of Petitions	%
Cases Pending 1/1/08	2 ^(R)	
New Cases Filed in '08	10	
Cases Available for Processing	12	
Processed By:		
Contested before a Judge	0	0.0%
Uncontested	3	75.0%
Other	1	25.0%
Cases Processed	4	100.0%
Cases Pending 12/31/08	8	

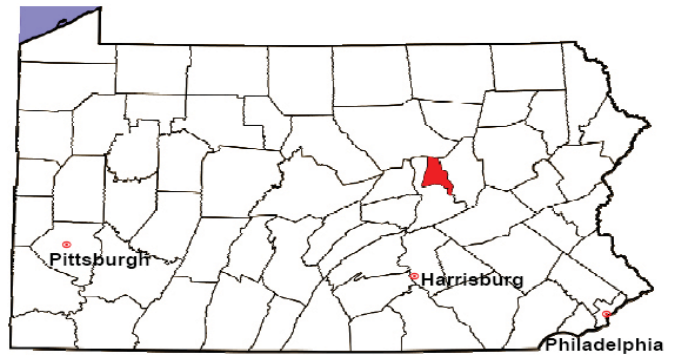
(R) - Revised

Relinquishments/Terminations New Cases Filed, 1998-2008



MONTOUR COUNTY

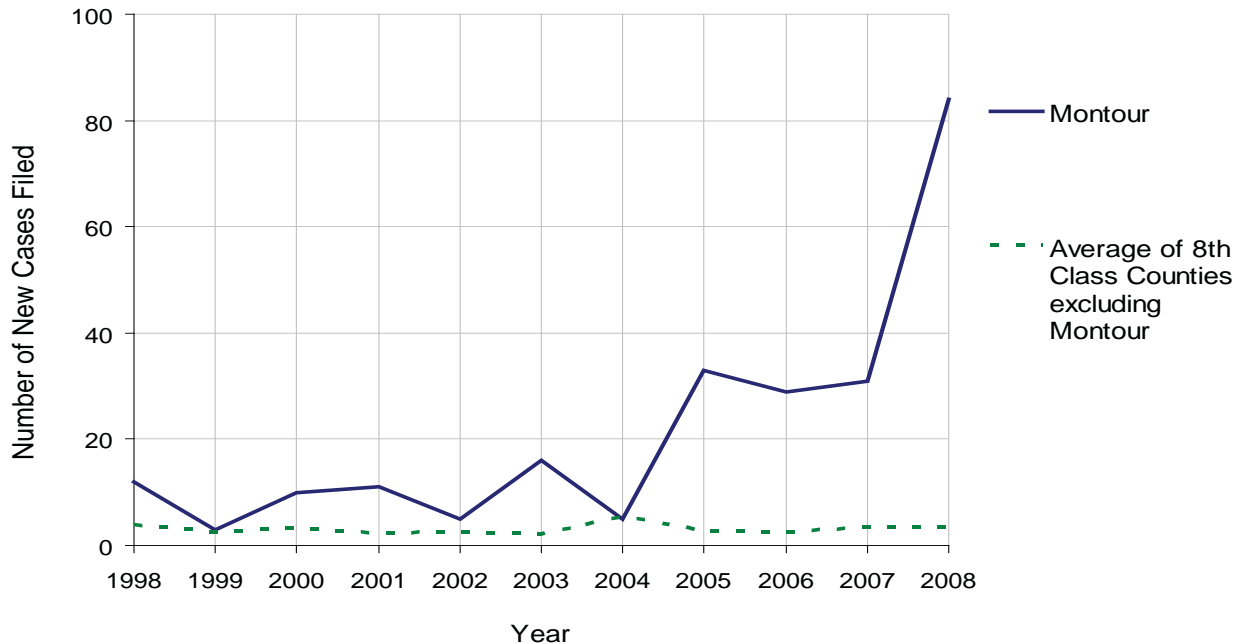
2008 Population Estimate: 17,705
 Class of County: 8th
 No. of Common Pleas Court Judgeships: 2
 (Columbia and Montour combined)



2008 Appointment of Guardians	No. of Petitions	%
Cases Pending 1/1/08	7 ^(R)	
New Cases Filed in '08	84	
Cases Available for Processing	91	
Processed By:		
Contested before a Judge	2	4.9%
Uncontested	23	56.1%
Other	16	39.0%
Cases Processed	41	100.0%
Cases Pending 12/31/08	50	

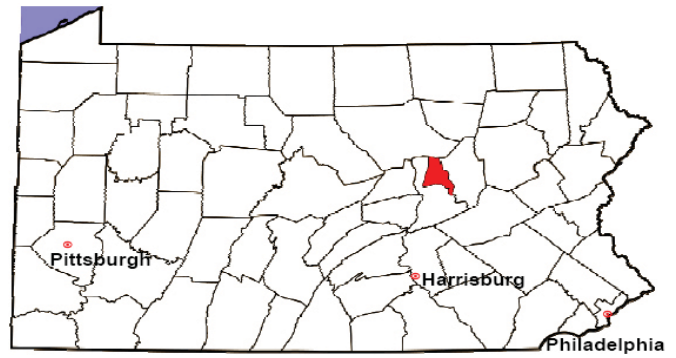
(R) - Revised

Appointment of Guardians New Cases Filed, 1998-2008



MONTOUR COUNTY

2008 Population Estimate: 17,705
 Class of County: 8th
 No. of Common Pleas Court Judgeships: 2
 (Columbia and Montour combined)



2008 Jury Activity & Performance Measures

A. Juror Days	101
B. Number Sent to Voir Dire	57
Voir Dire Attendance Rate $(B/A * 100)$	56.4%
C. Number of Voir Dires Started	1
Juror Days Per Voir Dire Starts (A/C)	101
D. Number of Jurors Selected	14
Juror Selection Rate $(D/B * 100)$	24.6%
E. Number of Jury Trials Started	1
Juror Days Per Trial Starts (A/E)	101
Number of Voir Dires Not Resulting in Trial $(C-E)$	0
Percent Voir Dires Not Resulting in Trial $(C-E)/C * 100$	0.0%
F. Pool Days	2
G. Zero Panel Days	1
Percent Zero Panel Days $(G/F * 100)$	50.0%
H. Total Juror Fees Incurred	\$1,374
Average Juror Fees Per Trial (H/E)	\$1,374

Average Juror Fees Per Trial, 1998-2008

