

Magisterial District Reestablishment 2012

Judicial District Summary Sheet

County Name: **Adams**

Judicial District #: **51**

Caseload and Magisterial District Elimination Analysis

The difference between the average annual caseload of Judicial District # 51 and its class of county: **10%**

Note: If the difference is >= 10% no proposed eliminations or justification is required.

Summary of Proposed Actions

51-3-01 Realign

51-3-02 Reestablish

51-3-03 Realign

51-3-04 Reestablish

Night/Central/Alternate Court Operations

This judicial district utilizes the following diversionary courts to assist in balancing workload:

Central Court: Yes Night Court: No

Public Comment

Proposal Posted for Public Comment: Yes Comments Received: Yes

MDJ Beauchat sent a letter regarding the change of 42 Pa.C.S.A.

1. Anticipated population growth county-wide. Existing locations are not adequate to accommodate an increase in workload due to reduction in magisterial districts.
2. Elimination of a district will require an increase in travel time for residents.
3. Adams County Office of Planning and Development also forecasted population growth through 2020 for all four magisterial districts. The projected increase ranges from 6.9 – 13.3%. A similar analysis comparing caseload and population shows a corresponding 5.6% increase in filings.

Magisterial District Reestablishment 2012

County Name: Adams

Judicial District #: 51

Existing and Proposed Magisterial Districts

Magisterial District #: 51-3-01

Proposed Action: Realign

Average Annual Caseload:	6,032	Average Annual Workload:	37,265
% Difference in Caseload (magisterial district/judicial district):	28.80	% Difference in Workload (magisterial district/judicial district):	5.20
% Difference in Caseload (magisterial district/class of county):	41.10	<i>Workload outside of a +/- 15% range requires realignment or support to maintain current configuration.</i>	

Magisterial District Judge & Office Information:

Thomas R. Carr	Birthdate:	7-28-51
34 East Middle Street	Mandatory Retirement:	2021
Gettysburg, PA 17325	Term Expires:	1-5-14

Existing Geography:

GETTYSBURG WD 01 PCT 02; GETTYSBURG WD 02;
GETTYSBURG WD 03 PCT 01; STRABAN TWP VTD 01;
STRABAN TWP VTD 02; TYRONE TWP Voting District

Proposed Geography:

GETTYSBURG WD 01 PCT 02; GETTYSBURG WD 02;
GETTYSBURG WD 03 PCT 01; STRABAN TWP VTD 01;
STRABAN TWP VTD 02

Office within district: Yes

Residence within district: Yes

Police Departments: Gettysburg Borough, PA State Police

Major Highways: Route 15, Route 30, Route 116

Existing and Proposed Magisterial Districts

Magisterial District #: 51-3-02

Proposed Action: Reestablish

Average Annual Caseload:	4,091	Average Annual Workload:	37,859
% Difference in Caseload (magisterial district/judicial district):	-12.70	% Difference in Workload (magisterial district/judicial district):	6.90
% Difference in Caseload (magisterial district/class of county):	4.30	<i>Workload outside of a +/- 15% range requires realignment or support to maintain current configuration.</i>	

Magisterial District Judge & Office Information:

Daniel S. Bowman

45D West Hanover Street

Bonneauville, PA 17325

Birthdate: 9-7-51

Mandatory Retirement: 2021

Term Expires: 1-3-16

Existing Geography:

GERMANY TWP Voting District; LITTLESTOWN WD 01; LITTLESTOWN WD 02; MC SHERRYSTOWN VTD 01; MC SHERRYSTOWN VTD 02; MT. JOY TWP VTD 01; MT. JOY TWP VTD 02; MT. PLEASANT TWP VTD 01; MT. PLEASANT TWP VTD 02; UNION TWP Voting District; BONNEAUVILLE Voting District; CONEWAGO TWP VTD 01; CONEWAGO TWP VTD 02

Proposed Geography:

GERMANY TWP Voting District; LITTLESTOWN WD 01; LITTLESTOWN WD 02; MC SHERRYSTOWN VTD 01; MC SHERRYSTOWN VTD 02; MT. JOY TWP VTD 01; MT. JOY TWP VTD 02; MT. PLEASANT TWP VTD 01; MT. PLEASANT TWP VTD 02; UNION TWP Voting District; BONNEAUVILLE Voting District; CONEWAGO TWP VTD 01; CONEWAGO TWP VTD 02

Office within district: Yes

Residence within district: Yes

Police Departments: Bonneauville Borough, Littlestown Borough, McSherrystown Borough, Conewago Township, PA State Police

Major Highways: Route 15, Route 30, Route 116, Route 97, Route 194

Existing and Proposed Magisterial Districts

Magisterial District #: 51-3-03

Proposed Action: Realign

Average Annual Caseload:	4,194	Average Annual Workload:	33,202
% Difference in Caseload (magisterial district/judicial district):	-10.50	% Difference in Workload (magisterial district/judicial district):	-6.20
% Difference in Caseload (magisterial district/class of county):	1.90	<i>Workload outside of a +/- 15% range requires realignment or support to maintain current configuration.</i>	

Magisterial District Judge & Office Information:

Tony J. Little

Birthdate: 9-28-72

40 Church Road

Mandatory Retirement: 2042

East Berlin, PA 17316

Term Expires: 12-31-17

Existing Geography:

EAST BERLIN Voting District; HAMILTON TWP Voting District; HUNTINGTON TWP VTD 01; LATIMORE TWP Voting District; BERWICK TWP Voting District; NEW OXFORD Voting District; OXFORD TWP DIST 01; OXFORD TWP DIST 02; READING TWP VTD 01; READING TWP VTD 02; YORK SPRINGS Voting District

Abbottstown Borough

Proposed Geography:

EAST BERLIN Voting District; HAMILTON TWP Voting District; HUNTINGTON TWP VTD 01; LATIMORE TWP Voting District; BERWICK TWP Voting District; NEW OXFORD Voting District; OXFORD TWP DIST 01; OXFORD TWP DIST 02; READING TWP VTD 01; READING TWP VTD 02; TYRONE TWP Voting District; YORK SPRINGS Voting District

Abbottstown Borough

Office within district: Yes

Residence within district: Yes

Police Departments: East Berlin Borough, Eastern Adams Regional, York Springs/Latimore Township, Reading Township, PA State Police

Major Highways: Route 15, Route 30, Route 94, Route 234

Existing and Proposed Magisterial Districts

Magisterial District #: 51-3-04

Proposed Action: Reestablish

Average Annual Caseload:	4,423	Average Annual Workload:	33,306
% Difference in Caseload (magisterial district/judicial district):	-5.60	% Difference in Workload (magisterial district/judicial district):	-5.90
% Difference in Caseload (magisterial district/class of county):	3.50		

Workload outside of a +/- 15% range requires realignment or support to maintain current configuration.

Magisterial District Judge & Office Information:

Mark D. Beauchat

2267 Fairfield Road

Gettysburg, PA 17325

Birthdate: 8-10-63

Mandatory Retirement: 2033

Term Expires: 12-31-17

Existing Geography:

ARENDSVILLE Voting District; CUMBERLAND TWP VTD 01; CUMBERLAND TWP VTD 02; CUMBERLAND TWP VTD 03; CUMBERLAND TWP VTD 04; FAIRFIELD Voting District; FRANKLIN TWP VTD 01; FRANKLIN TWP VTD 02; FREEDOM TWP Voting District; BENDERSVILLE Voting District; HAMILTONBAN TWP Voting District; HIGHLAND TWP Voting District; LIBERTY TWP Voting District; MENALLEN TWP Voting District; BIGLERVILLE Voting District; 48; BUTLER TWP Voting District; CARROLL VALLEY Voting District

Proposed Geography:

ARENDSVILLE Voting District; CUMBERLAND TWP VTD 01; CUMBERLAND TWP VTD 02; CUMBERLAND TWP VTD 03; CUMBERLAND TWP VTD 04; FAIRFIELD Voting District; FRANKLIN TWP VTD 01; FRANKLIN TWP VTD 02; FREEDOM TWP Voting District; BENDERSVILLE Voting District; HAMILTONBAN TWP Voting District; HIGHLAND TWP Voting District; LIBERTY TWP Voting District; MENALLEN TWP Voting District; BIGLERVILLE Voting District; 48; BUTLER TWP Voting District; CARROLL VALLEY Voting District

Office within district: Yes

Residence within district: Yes

Police Departments: Biglerville Borough, Carroll Valley Borough, Hamiltonban Township, Liberty Township, Cumberland Township, PA State Police

Major Highways: Route 15, Route 30, Route 34, Route 234, Route 233, Route 16

Magisterial District Reestablishment 2012

Magisterial District Caseload/Workload Analysis

Judicial District and Class of County Comparison Statistics

Adams / 51

Judicial District Average Caseload			
2011 Class	2011 Filings	2012 Class	2012 Filings
6	4,685	5	4,685

2011 Class of County Caseload Averages								
2011 Class	CR	PC	TR	NT	CV	LT	MD	Total
6	251	126	2,087	485	231	43	41	3,263

2012 Class of County Caseload Averages								
2012 Class	CR	PC	TR	NT	CV	LT	MD	Total
5	416	144	2,412	656	279	102	82	4,092

Notes on Analysis:

CASELOAD: The statistics provided are used to compare the average annual caseload of each magisterial district to the class of county average as one measure to assess whether any changes should be proposed. Reported values are provided by the judicial district; the comparison values are provided by the MDJS.

WORKLOAD: Where the average annual workload of a magisterial district is greater/less than 15% of the judicial district's workload average, the judicial district should realign - OR - explain why this difference does not impact workload equity within the judicial district. A value that is green indicates it is within range; red requires justification if realignment or elimination are not proposed.

Judicial District Caseload Averages		
Adams	2011	2012
Class	6	5
CR	366	366
NT	582	582
PC	215	215
TR	3,094	3,094
CV	268	268
LT	103	103
MD	56	56
AVG	4,685	4,685

Judicial District Workload Averages		
Adams	2011	2012
Class	6	5
CR	13,455	13,440
NT	6,250	6,251
PC	2,313	2,309
TR	7,055	7,055
CV	3,022	3,022
LT	1,497	1,497
MD	1,816	1,824
-15 % Workload	30,097	30,088
Average Workload	35,408	35,397
+ 15% Workload	40,719	40,707

Magisterial District Caseload/Workload Analysis

51-3-01

Realign

CASELOAD

Average Total Annual Caseload:

Reported	AOPC	
	2011	2012
6,032		

Magisterial District Average: Judicial District Average:

28.8	28.77%	28.77%
------	--------	--------

Magisterial District Average: Class of County Average:

41.1	84.83%	47.42%
------	--------	--------

WORKLOAD

Average Total Annual Workload:

Reported	AOPC	
	2011	2012
37,265		

Magisterial District Average: Judicial District Average:

5.2	5.24%	5.28%
-----	-------	-------

51-3-02

Reestablish

CASELOAD

Average Total Annual Caseload:

Reported	AOPC	
	2011	2012
4,091		

Magisterial District Average: Judicial District Average:

-12.7	-12.67%	-12.67%
-------	---------	---------

Magisterial District Average: Class of County Average:

4.3	25.36%	-0.02%
-----	--------	--------

WORKLOAD

Average Total Annual Workload:

Reported	AOPC	
	2011	2012
37,859		

Magisterial District Average: Judicial District Average:

6.9	6.92%	6.95%
-----	-------	-------

Magisterial District Caseload/Workload Analysis

51-3-03

Realign

CASELOAD

Average Total Annual Caseload:

Reported	AOPC	
	2011	2012
4,194		

Magisterial District Average: Judicial District Average:

-10.5	-10.47%	-10.47%
-------	---------	---------

Magisterial District Average: Class of County Average:

1.9	28.51%	2.50%
-----	--------	-------

WORKLOAD

Average Total Annual Workload:

Reported	AOPC	
	2011	2012
33,202		

Magisterial District Average: Judicial District Average:

-6.2	-6.23%	-6.20%
------	--------	--------

51-3-04

Reestablish

CASELOAD

Average Total Annual Caseload:

Reported	AOPC	
	2011	2012
4,423		

Magisterial District Average: Judicial District Average:

-5.6	-5.58%	-5.58%
------	--------	--------

Magisterial District Average: Class of County Average:

3.5	35.53%	8.09%
-----	--------	-------

WORKLOAD

Average Total Annual Workload:

Reported	AOPC	
	2011	2012
33,306		

Magisterial District Average: Judicial District Average:

-5.9	-5.94%	-5.91%
------	--------	--------

AOPC

JUDICIAL DISTRICT SUMMARY WORKSHEET

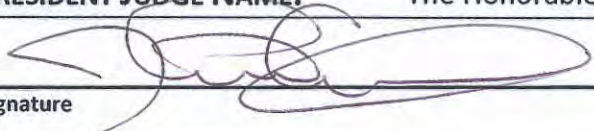
PLEASE SUBMIT ONE COPY OF THE JUDICIAL DISTRICT SUMMARY WORKSHEET.

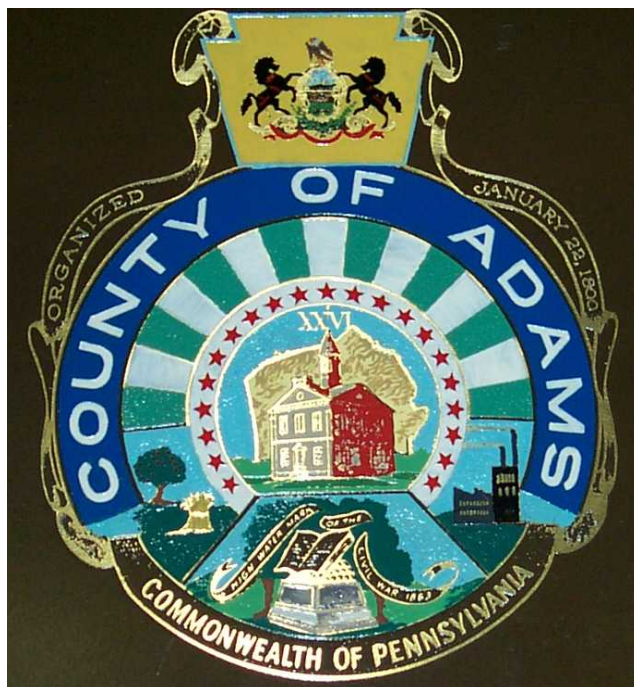
To enter data, press TAB to move between fields.

I.	JUDICIAL DISTRICT NUMBER:	51
A.	What is the class of county?	5
B.	What is the percentage difference in the average annual caseload between this judicial district and the applicable class of county?	9.60%
II.	PROPOSED ACTIONS:	
A.	List existing magisterial districts: 51-3-01, 51-3-02, 51-3-03, 51-3-04	
B.	Does this judicial district have an annual average caseload that is ten percent above the average caseload for the applicable class of county?	NO
	1. If the answer to II. B. above is <i>NO</i> , are eliminations proposed?	NO
	a)List magisterial districts proposed for elimination.	
	b)If no eliminations are proposed based on II. B. above, what are the factors for this decision? Unknown attrition, 0.4% away from AOPC cutoff, anticipated population growth in County in next 10 years, existing locations not adequate to accommodate reduction and redistribution of staff, increase in travel time across county (see report for full explanation)	
	2. If the answer to II. B. above is <i>YES</i> , are eliminations proposed?	Choose Yes or No
	a)List magisterial districts proposed for elimination.	
C.	Are any magisterial districts proposed for reestablishment?	YES
	1. List magisterial districts proposed for reestablishment. 51-3-02, 51-3-04	

AOPC

JUDICIAL DISTRICT SUMMARY WORKSHEET

D. Are any magisterial districts proposed for realignment? 1. List magisterial districts proposed for realignment. 51-3-01, 51-3-03	YES
III. NIGHT AND CENTRAL COURT OPERATIONS	
A. Is there a night court operating within the judicial district?	NO
B. Is there a central court operating within the judicial district?	YES
C. Note comments regarding how night, central or other similar court programs impact operations within the judicial district. Central Court has streamlined the Preliminary Hearing process to the benefit of attorneys, police departments, Sheriff's department, victim, witnesses and defendants. Truancy Court is designed to improve school attendance while assisting children and families when possible to avoid having to pay fines and costs associated with violation of school attendance in exchange for their full participation	
IV. PUBLIC COMMENT	
A. A request for public comment was posted:	YES
B. Comments were received:	YES
C. Comments are attached:	NO
V. ADDITIONAL REMARKS CONCERNING PROPOSAL:	
The only comment received came verbally from Magisterial District Judge Mark Beauchat, with a summation of his verbal remarks incorporated into the written report.	
VI. DATE SUBMITTED TO AOPC:	JANUARY 23, 2012
VII. PRESIDENT JUDGE NAME:	The Honorable John D. Kuhn
Signature	



Adams County

Magisterial District Reestablishment

Report

2012-2021

January 23, 2012

Introduction

In October 2011, Adams County was notified by the Administrative Office of Pennsylvania Courts (AOPC) of its requirement under 42 Pa.C.S.A. § 1503 to participate in the reestablishment of magisterial districts. This event occurs every ten years and is directly related to the Federal decennial census. Adams County has received from the AOPC a set of guidelines, case filing statistics and work load statistics for Criminal, Non-Traffic, Private Complaint, Traffic, Civil, Landlord/Tenant and Miscellaneous filings in the four District Courts in Adams County. In addition, Population Data and Projections, August 2011, were received by the Adams County Office of Planning and Development. The guidelines indicate that Adams County shall submit recommendations to the AOPC regarding the reestablishment of its District Courts no later than February 15, 2012.

These District Courts currently exist as follows:

1. District Court 51-3-01
34 East Middle Street
Gettysburg, PA 17325
Coverage: Gettysburg Borough
 Straban Township
 Tyrone Township
Current Magisterial District Judge: Thomas R. Carr
Term Expires: 1-5-14

2. District Court 51-3-02
45D West Hanover Street
Gettysburg, PA 17325
Coverage: Bonneauville Borough
 Littlestown Borough
 McSherrystown Borough
 Conewago Township
 Germany Township
 Mt. Joy Township
 Mt. Pleasant Township
 Union Township
Current Magisterial District Judge: Daniel S. Bowman
Term Expires: 1-3-16

3. District Court 51-3-03
40 Church Road
East Berlin, PA 17316
Coverage: Abbottstown Borough
 East Berlin Borough
 New Oxford Borough
 York Springs Borough
 Berwick Township

Hamilton Township
Huntington Township
Latimore Township
Oxford Township
Reading Township

Current Magisterial District Judge: John C. Zepp, III

Term Expires: 1-2-12

Newly-elect Magisterial District Judge: Tony Little

Term Begins: 1-3-12

Term Expires: 1-1-18

4. District Court 51-3-04

2267 Fairfield Road

Gettysburg, PA 17325

Coverage: Arendtsville Borough
Bendersville Borough
Biglerville Borough
Carroll Valley Borough
Fairfield Borough
Butler Township
Cumberland Township
Franklin Township
Freedom Township
Hamiltonban Township
Highland Township
Liberty Township
Menallen Township

Current Magisterial District Judge: Mark D. Beauchat

Term Expires: 1-1-18 (Newly re-elected)

The following report, along with required worksheets provided by the AOPC, will meet the requirements of the AOPC. The conclusion is that there are no recommendations to eliminate an existing district court; that Realignment should occur for District Court 51-3-01 and District Court 51-3-03, in that Tyrone Township be moved from 51-3-01 to 51-3-03 and; that Reestablishment should occur for District Court 51-3-02 and District 51-3-04.

Background

In 2002, Adams County submitted its last report regarding reestablishment. In that report, the recommendation was to reestablish the four District Courts but to change boundaries in order to address the equitable distribution of caseload. District Court 51-3-01 eliminated Cumberland Township and Mt. Joy Township, but added Tyrone Township. District Court 51-3-02 added Mt. Joy Township. District Court 51-3-03 eliminated Tyrone Township. District Court 51-3-04 added Cumberland Township.

These recommendations were accepted by the AOPC and the Pennsylvania Supreme Court.

Guidelines

For the current reestablishment project, the AOPC has pre-determined the standards by which counties are to review its data and make its recommendations. These standards are all outlined in the document provided by the AOPC, *Magisterial District Reestablishment Guidelines*. In addition to these written guidelines, the AOPC has notified Court Administration that Adams County is to compare itself to other **Class 5** counties, as its population has grown to the point of moving into a new class size. At the forefront of this analysis is the careful consideration by counties as to whether any offices can be eliminated. The goal of the Supreme Court is to reduce the current District Court number across the Commonwealth by 10%. Census figures suggest that there are areas across the Commonwealth that have seen decreases in population that would suggest the possibility of decreasing the size of District Courts. This potential reduction must be given consideration, but not at the expense of effective and efficient administration of justice.

Attrition

The AOPC guidelines indicate the preference to eliminate potential magisterial districts through attrition over the next two to six years. In Adams County, there are two District Courts that may have attrition during that time period: 51-3-01 and 51-3-02. The term of Magisterial District Judge Thomas Carr from 51-3-01 will end on 1-5-14. The term of Magisterial District Judge Daniel Bowman from 51-3-02 will end on 1-3-16. It is unknown at this time if either intends to seek another term. As will be discussed later on in this report, although these two districts will have the potential for attrition, they are not being recommended for elimination.

Average Caseload

The AOPC is asking each county to review the average caseloads of each office, to compare the average caseload to each office within the magisterial district and to compare the average caseload against other counties in the same class size.

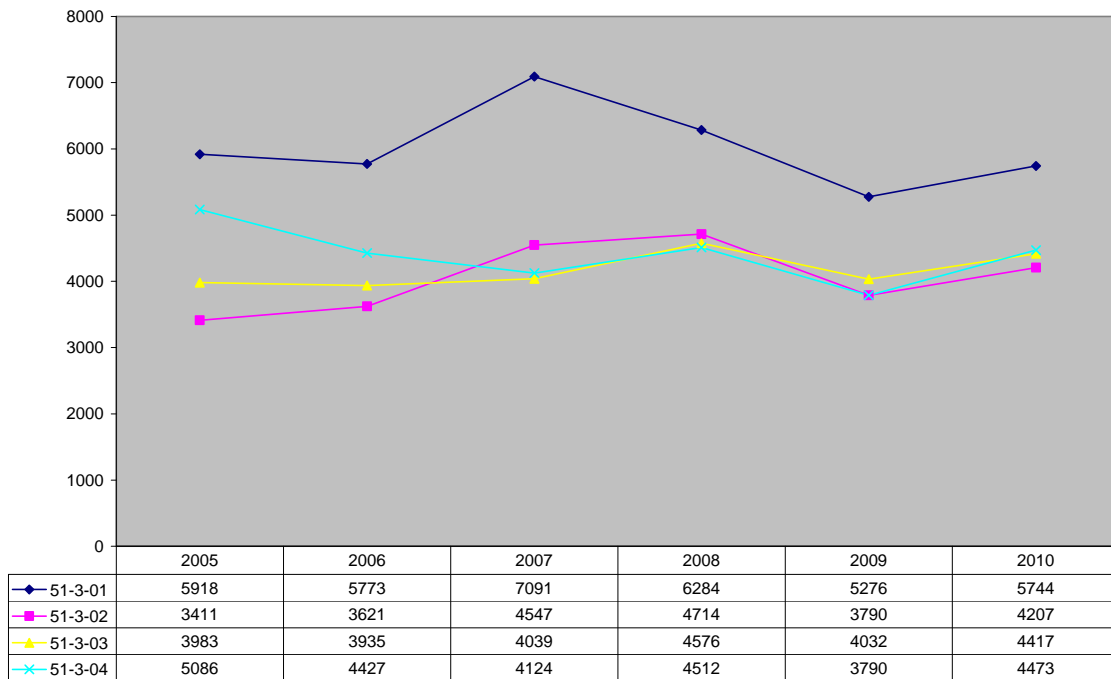
Total Filings	2005 [#]	2006 [#]	2007 [#]	2008	2009	2010	Sum of Averages*	State Average Class 5
51-3-01	5918	5773	7091	6284	5276	5744	6032	41.1%
51-3-02	3411	3621	4547	4714	3790	4207	4091	-4.3%
51-3-03	3983	3935	4039	4576	4032	4417	4194	-1.9%
51-3-04	5086	4427	4124	4512	3790	4473	4423	3.5%
Average							4685	9.6%

[#](Miscellaneous filing data unavailable for these years)

* (Figures are based upon sum of rounded figures for: 6 year average of Criminal, Non-Traffic, Private Complaint, Traffic, Landlord/Tenant and Civil filings, plus 3 year average of Miscellaneous filings)

Class 5 Counties	Filings	Population
Northumberland	3318	94528
Blair	3392	127089
Lawrence	3577	91108
Franklin	3803	149618
Lycoming	3938	116111
Monroe	4240	169842
Mercer	4478	116638
Adams	4685	101407
Lebanon	5256	133568
Centre	6470	153990
Class 5 Average	4275	

TOTAL FILINGS



The guidelines indicate that when a magisterial district falls into the lower end of the range, consideration should be given to its elimination. In Adams County, the office with the lowest number of filings is 51-3-02 (184 average annual filings below the Class 5 County average). However, a second measure provided by the AOPC called “Workload” (to be discussed later in the report) indicates that 51-3-02 has the highest workload of the four offices based on the type of filings it processes. Additionally, there has been a 23.3% increase in filings in that office since 2005.

10% Above Average Caseload for County Class Size

The AOPC also indicates that if the average caseload size is not above 10% compared to other counties in our same class, we must provide an explanation as to why

no districts are being proposed for elimination. In the table presented above in the “Average Caseload” section, the percentage compared to Class 5 Counties is noted. On the whole, Adams County is at 9.6% above the average for all Class 5 Counties. Since this is 0.4% below the percentage established by the AOPC, we must answer the question regarding elimination.

Conclusions Based on Caseload

The process of coming to the conclusions in this section of the report will be accomplished by examination of the data, conferring with the Magisterial District Judges in Adams County, and the guidance and review of the report by a Committee to be comprised of the following Adams County members: a Court Administrator, a current County Commissioner, a Commissioner-elect, a current Magisterial District Judge, the current District Attorney, the current Chief Public Defender and two Common Pleas Judges.

Pros

There were two positive aspects noted with potential elimination of a district court: a savings at the state-level for the salary and benefits of one Magisterial District Judge, and potential savings at the county level for a rental location.

Cons

There were several cons noted. It is believed that the County would end up spending more on rental costs, as the existing structures (with perhaps the exception of the 51-3-02 location) do not have room for additional staff and storage that would come with the elimination of a district court. Depending on where these new properties were located, there could be increased travel times for the public, police, and other end users of District Court services. Higher constable mileage fees may result from decreasing the number of offices. There would be an impact on the quality of the administration of justice from the Magisterial District Judge from the resulting shift of cases from four to three Magisterial District Judges. Finally, the on-call rotation would go down to three Magisterial District Judges, which would result in an excessive burden and would impact normal operations of the offices.

There were certain pieces of data that are compelling reasons to not seek elimination. The first piece of data is related to the 10% Above Average for County Class Size figure. The average number of filings for Class 5 counties is 4,275. To get 10% above that number, the average number of filings would be 4,703 filings. In Adams County, the average number of filings for all four is 4,685, or, 9.6% above the average. We miss the cutoff by 0.4%. That number translates to 18 filings. We come to the conclusion that it does not make sense to eliminate an entire district court based on a county-wide average of 18 less filings, as we have additional information that suggests a continued population growth for Adams County during the next ten years.

In order to consider population trends, we consulted the Adams County Office of Planning and Development (OPD). Based on information received, we are able to do some projections of our own in each district court, as follows:

	Population			Population Change %		Projection	
	1990 Census	2000 Census	2010 Census	1990 - 2000	2000 - 2010	2020	
51-3-01							Projection of increase: 1094 individuals (6.9%)
Gettysburg Borough	7025	7490	7620	6.6%	1.7%	7753	
Straban Township	4565	4539	4928	-0.6%	8.6%	5600	
Tyrone Township	1829	2273	2298	24.3%	1.1%	2587	
Totals	13419	14302	14846			15940	
51-3-02							Projection of increase: 3852 individuals (11.2%)
Bonneauville Borough	1282	1378	1800	7.5%	30.6%	2225	
Littlestown Borough	2974	3947	4434	32.7%	12.3%	4850	
McSherrystown Borough	2769	2691	3038	-2.8%	12.9	3115	
Conewago Township	4532	5709	7085	26.0%	24.1%	7835	
Germany Township	1949	2269	2700	16.4%	19.0%	3232	
Mt. Joy Township	2848	3232	3670	13.5%	13.6%	4382	
Mt. Pleasant Township	4076	4420	4693	8.4%	6.2%	5305	
Union Township	2178	2989	3148	37.2%	5.3%	3476	
Totals	22608	26635	30568			34420	
51-3-03							Projection of increase: 3952 individuals (13.1%)
Abbottstown Borough	539	905	1011	67.9%	11.7%	1047	
East Berlin Borough	1175	1365	1521	16.2%	11.4%	1600	
New Oxford Borough	1617	1696	1783	4.9%	5.1%	1811	
York Springs Borough	547	574	833	4.9%	45.1%	859	
Berwick Township	1831	1818	2389	-0.7%	31.4%	3085	
Hamilton Township	1760	2044	2530	16.1%	23.8%	3434	
Huntington Township	1989	2233	2369	12.3%	6.1%	2671	
Latimore Township	2209	2528	2580	14.4%	2.1%	2856	
Oxford Township	3437	4876	5517	41.9%	13.1%	6359	
Reading Township	3828	5106	5780	33.4%	13.2%	6543	
Totals	18932	23145	26313			30265	
51-3-04							Projection of increase: 4571 individuals (13.3%)
Arendtsville Borough	693	848	952	22.4%	12.3%	1021	
Bendersville Borough	560	576	641	2.9%	11.3%	664	
Biglerville Borough	993	1101	1200	10.9%	9.0%	1295	
Carroll Valley Borough	1457	3291	3876	125.9%	17.8%	4498	
Fairfield Borough	524	486	507	-7.3%	4.3%	563	
Butler Township	2514	2678	2567	6.5%	-4.1%	2950	
Cumberland Township	5431	5718	6162	5.3%	7.8%	7663	
Franklin Township	4126	4590	4877	11.2%	6.3%	5448	
Freedom Township	692	844	831	22.0%	-1.5%	913	
Hamiltonban Township	1872	2216	2372	18.4%	7.0%	2651	
Highland Township	815	825	943	1.2%	14.3%	1143	
Liberty Township	938	1063	1237	13.3%	16.4%	1405	
Menallen Township	2700	2974	3515	10.1%	18.2%	4037	
Totals	23315	27210	29680			34251	

The projections all indicate increases in population in all four district court areas. Once that is considered, we can develop a ratio that compares the projected number of filings in 2020 with the projected population growth in 2020. In order to do that, we noted the population growth between 2000 and 2010 as being 11.1%. We also noted the projected population growth from the data provided by OPD to be 13.3% in 2020. We then examined the data from the reestablishment report from 10 years ago, when the average number of filings from 1999-2001 was provided (the beginning of the last ten year period), and compared it to the average filings from 2005-2010 (the end of the last ten year period). Based on the comparison of the 1999-2001 and 2005-2010 data, an overall increase in filings across the county of 4.7% is noted. By taking a ratio of population growth to number of filings, we can project a 5.6% increase in the number of filings when Adams County reaches 2020, or 1,049 additional filings. This growth will result in exceeding the established guideline set by AOPC for a Class 5 County.

Another compelling factor in examining the data was the comparison we are asked to make with other Class 5 Counties. In the data provided by the AOPC, there are three Class 5 Counties (Franklin, Centre and Monroe) that will actually become Class 4 Counties in 2012. The data from those counties is, however, still counted in the data that Adams County is to compare itself to. As newly entering into the grouping of Class 5 counties, we are near the bottom of the population range, comparing ourselves with counties that have up to 68,435 more people than our county. If those three counties were removed from the data, the average filings for a Class 5 County (including Adams) would be 4,092. 10% above that number would represent 4,502 filings. Adams County averages 4,685 per office a year, which is 14.5% above the average and exceeds the 10% cutoff established by the AOPC.

Workload

The AOPC has introduced a new measure to assist counties in determining if the workload is distributed effectively. This involves the assignment of a weight for different types of case filings, which recognizes that all filings are not equal and that some filings require more work than others. If there is an imbalance, realignment of the district borders can assist with this.

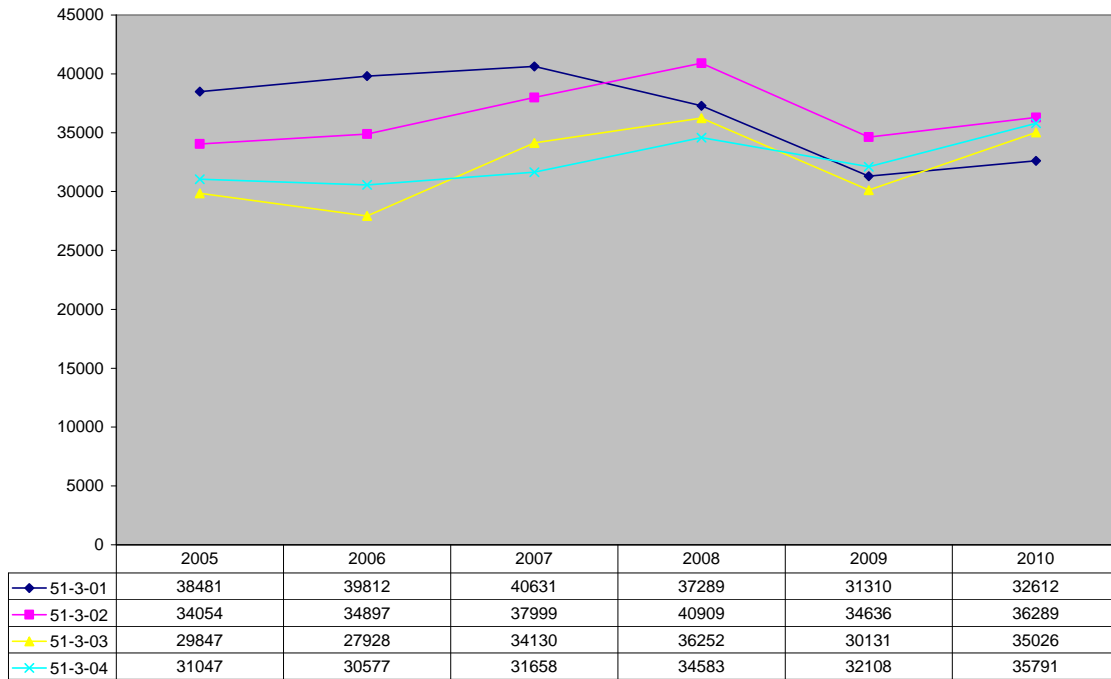
There are factors we are to follow. Every magisterial district court must be located within the magisterial district boundaries. All portions of the magisterial district must be contiguous. District boundaries cannot be redrawn in such a way that would move an incumbent district judge's residence into another magisterial district. Voting districts cannot be split.

Total Workload	2005 [#]	2006 [#]	2007 [#]	2008	2009	2010	Sum of Averages*
51-3-01	38481	39812	40631	37289	31310	32612	37265
51-3-02	34054	34897	37999	40909	34636	36289	37859
51-3-03	29847	27928	34130	36252	30131	35026	33202
51-3-04	31047	30577	31658	34583	32108	35791	33306
Average							35408

[#](Miscellaneous filing data unavailable for these years)

* (Figures are based upon sum of rounded figures for: 6 year average of Criminal, Non-Traffic, Private Complaint, Traffic, Landlord/Tenant and Civil filings, plus 3 year average of Miscellaneous filings)

TOTAL WORKLOAD



No More than 15% Higher or Lower Workload

In order to assist counties to determine if one office has work in excess of another, the AOPC has established 15% as the maximum workload variance between offices. No office should have 15% more workload than another. In Adams County, the average difference between the lowest workload office and highest workload office is 12.2%. It is anticipated that the percentage will decrease during the next reporting period. Percentage of population growth is anticipated to be the highest in the two district courts where the average workload is the lowest. If this projection holds, we should see the four districts coming closer together in their average.

Realignment

Even though no one office has a variance of workload higher than 15%, it does appear that a recommendation to realign two of our District Courts would be of benefit in bringing the four offices more in line with one another.

During the last MDJ reestablishment project, Adams County moved Tyrone Township from 51-3-03 to 51-3-01. This was done because Cumberland and Mt. Joy Township were moved out of 51-3-01 and it was believed that bringing Tyrone into 51-3-01 would help ensure a more even distribution of cases between the four offices. In examining the current data, that move may not have been necessary.

We know by examining the historical data that 51-3-01 has continued to have more filings than any of the other three district courts. During our examination of the data from the AOPC, we attribute this to one factor: Traffic filings in Gettysburg Borough. The AOPC has determined that Traffic filings have a low Workload rate as far as the time a Magisterial District Judge has to spend to resolve. However, a high number

of traffic filing can have significant impact on the staff that processes the filings, simply due to sheer numbers. As 51-3-01 only has three geographic areas to contend with (Gettysburg Borough, Straban Township and Tyrone Township), and Gettysburg Borough cannot be sub-divided to another district court, the only possible move that could be considered would be the redistricting of Tyrone Township (redistricting Straban Township cannot be done alone, as it would isolate Tyrone Township, resulting in the need to move both townships to another district court).

The following is a breakdown of the number of filings in Tyrone Township from 2005 to 2010:

Filings	2005	2006	2007	2008	2009	2010	Average
Private Complaints	33	31	29	21	19	9	24
Traffic	442	405	347	375	301	295	361
Non-Traffic	35	20	27	23	37	42	31
Criminal	37	28	24	22	21	29	27
Totals	547	484	427	441	378	375	

If those filing had been filed at 51-3-03 during 2005-2010 period instead of at 51-3-01, this is how the overall case filings averages would look for Adams County:

Total Filings	Sum of Averages	State Average Class 5
51-3-01	5590	30.8%
51-3-02	4091	-4.3%
51-3-03	4636	8.4%
51-3-04	4423	3.5%

Based upon this analysis, it may be beneficial to move Tyrone Township to District Court 51-3-03. This move would suggest that the caseload for 51-3-01, which is currently 41.1% above the state average for Class 5 counties, would be brought down to 30.8%. This move raises case filings for 51-3-03 from -1.9% against the state average for Class 5 counties to 8.4%. From a workload perspective, 51-3-03 is considered to be at -10.9% of the workload in comparison the Class 5 county average. An increase in filings brought about through realignment will serve to bring this number up.

Comparison of Workload with other Class 5 Counties

The AOPC does not require us to compare ourselves with other Class 5 counties regarding the measure of Workload. This is likely due to the variance that may not be accounted for with this measure based upon population size. We are able to do a simple comparison with the information provided to us by the AOPC. However, we may need to consider this comparison in relation to the population size of our county.

Adams County is 7th on the list for both Workload and population size in comparison with other Class 5 counties. There is a pattern suggested in the data, with some exceptions, that indicates that as population size increases, Workload also increases. Population growth analysis previously discussed indicates growth in Adams

County, and therefore, we believe that the Workload measure in Adams County will also increase during the next 10 years.

Class 5 Counties	Workload	Population
Northumberland	30050	94528
Lawrence	31681	91108
Monroe	32308	169842
Adams	35408	101407
Franklin	36552	149618
Lycoming	37079	116111
Blair	37376	127089
Lebanon	40520	133568
Mercer	44644	116638
Center	45343	153990
Class 5 Average	37284	

Other Factors

This report also makes note of the following:

- 1) There are no municipalities in the 51st Judicial District which contain more than one magisterial district.
- 2) The current location of the four district court offices does not require any county resident to drive more than 30 minutes to reach the district court building *within the resident's own district*.
- 3) Adams County has established a Truancy Court Program in District Court 51-3-03 in an effort to improve school attendance while assisting children and families when possible to avoid having to pay fines and costs associated with violation of school attendance in exchange for their full participation.
- 4) Adams County has established a Central Court Program to assist prosecutors, defense attorneys, witness, victims, police officers and others, by centralizing the process and location of preliminary hearings to one day per week.

Public Comment

Guidelines from the AOPC indicate that the draft of the Magisterial District Reestablishment Report by provided to the public for a period of 30 days and that comments from the public are to be included in the final report. A copy of this report will be posted on the County of Adams website (<http://www.adamscounty.us/>) on the main page under "County News." Copies of this report will also be forwarded to local media outlets. Comments to the report and media inquiries regarding Adams County specific aspects of this report may be directed to Donald Fennimore, 717-337-9846, dfennimore@adamscounty.us. Media inquiries regarding the state-wide process may be directed to Art Heinz, 717-231-3317.

Responses

On December 21, 2011, Magisterial District Judge Mark Beauchat provided an addition to the "Other Factors" section of this report. He indicates that the enactment of

Act 114 of 2010, effective January 22, 2011, resulted in a change to 42 Pa.C.S.A. § 1515, which raised the dollar amount of civil claims that can be filed at the Magisterial District Court-level from \$8,000 to \$12,000. This will result in increased civil filings in Magisterial District Court offices moving forward.

No other comments were received from the public as of the end of business, January 20, 2012.

Conclusions

I, John D. Kuhn, President Judge of the 51st Judicial District, based upon the data and factors specific to the County of Adams, recommend the following:

- 1) The Realignment of District Court 51-3-01 and District Court 51-3-03, in that Tyrone Township be eliminated from 51-3-01 and incorporated into 51-3-03;
- 2) The Reestablishment of District Court 51-3-02 and District 51-3-04;
- 3) No elimination of any District Court for the 51st Judicial District.

Respectfully Submitted:

A handwritten signature in black ink, appearing to read 'John D. Kuhn', with a large, sweeping flourish extending to the right.

John D. Kuhn
President Judge, 51st Judicial District

County of Adams > Home - Windows Internet Explorer

http://www.adamscounty.us/

File Edit View Favorites Tools Help

County of Adams > Home

High 49°/Low 28°
Mainly clear

High 45°/Low 41°
Rain

Thursday

High 55°/Low 32°
Rain and snow showers

Friday

High 37°/Low 26°
Partly cloudy

[Weather Forecast](#) | [Weather Maps](#) | [Weather Radar](#)

Top Stories

[Heavy snow seen tomorrow after 1 more day](#)
Chicago Tribune - 1 hour ago
Enjoy it while it lasts. After one more day of unseasonable mildness today, tomorrow could bring the beginning of 6 inches of snow. The National Weather Service has issued a winter storm

[Snow giving way to sunny skies for](#)
[Weather: Expected showers for](#)
[Battle Creek Enquirer - Westport-](#)
[News - Huntington Herald Dispatch](#)
[Related Articles »](#)

[« Previous](#) [Next »](#) powered by Google News

Sports

[Hue Jackson out as Raiders coach](#)
The Salinas Californian - 25 minutes ago
The most painful of journeys, that of a parent struggling to guide a seriously ill child back to... The Associated Press ALAMEDA — Reggie McKenzie made clear on his first day as Raiders general

[Hue Jackson Firing Signifies New](#)
[What new Oakland coach needs to](#)

County News

Commissioners Proposed Agenda for Wednesday, January 11th Meeting

[read more ...](#)
Elected Officials Induction Ceremony

[read more ...](#)
2012 Adams County Budget
[FINAL Adoption](#)

Holiday Recycling, for more information
[Click Here](#)

Great American Cleanup in Pennsylvania
[Click here to learn how to participate](#)

Adams County Magisterial District Reestablishment
[Report-Draft](#)

Reassessment Board Rules & Guidelines
Excerpt of [Reassessment Board Rules](#)
[Reassessment Board Guidelines](#)

[Adams County Court of Common Pleas Tax Assessment Appeal Procedures](#)

[Form for Filing an Assessment Appeal with the Adams County Court of Common Pleas](#)

[Local Rules of Court](#)
[Open Records/ Right to Know](#)
[School Districts](#)
[Trial Schedule](#)

Adams County
Video TourBook

Welcome

Quality of Life

Real Estate and Relocation

Education

Attractions

Shopping

Tourism and Things to Do

Chamber of Commerce

Parks and Recreation

Screen Capture
1/11/12
Adams County
Web Site



MAGISTERIAL DISTRICT REESTABLISHMENT WORKSHEET

PLEASE SUBMIT ONE COPY OF THIS WORKSHEET FOR EACH MAGISTERIAL DISTRICT.

To enter data, press TAB to move between fields.

I.	MAGISTERIAL DISTRICT COURT NUMBER (#####):	51-3-01
II. BREAKDOWN OF MAGISTERIAL DISTRICT - CASELOAD		
A.	Average Total Caseload:	6,032
B.	Difference (%) between this magisterial district's average total caseload and your judicial district's average total caseload:	28.80%
C.	Difference (%) between this magisterial district's average total caseload and applicable class of county's average total caseload:	41.10%
III. BREAKDOWN OF MAGISTERIAL DISTRICT - WORKLOAD		
A.	Average Total Workload:	37,265
B.	Difference (%) between this magisterial district's average total workload and the judicial district's average total workload:	5.20%
C.	Does this magisterial district have an average total workload that is fifteen percent <i>greater than or less than</i> any other magisterial district within your judicial district:	NO
D.	If YES, how does this difference impact workload equity within your judicial district?	
IV. PROPOSED CHANGE:		
A.	Please indicate any proposed change in this magisterial district. Check all that apply.	<input type="checkbox"/> Reestablish <input checked="" type="checkbox"/> Realign <input type="checkbox"/> Eliminate
B.	What is the proposed effective date (m/d/yyyy):	1/1/2013
V. MAGISTERIAL DISTRICT INFORMATION:		
A.	Magisterial District Judge Name: Thomas R. Carr	
B.	Term Expiration (m/d/yyyy):	1/5/2014



MAGISTERIAL DISTRICT REESTABLISHMENT WORKSHEET

C. Mandatory Retirement Date (m/d/yyyy):	7/28/2021
D. Office Location (Street, City and Zip code):	34 E. Middle St. Gettysburg 17325
E. Is the office within the boundaries of the magisterial district:	YES
F. Is the residence of the magisterial district judge within the boundaries of the magisterial district:	YES
G. List any police departments located within this magisterial district:	Gettysburg Borough, Pennsylvania State Police
H. List any major highways within this magisterial district:	Rt. 15/Rt. 30/Rt. 116
VI. LIST EXISTING MAGISTERIAL DISTRICT MUNICIPALITIES:	Gettysburg Borough, Tyrone Township, Straban Township
VII. LIST PROPOSED MAGISTERIAL DISTRICT MUNICIPALITIES:	Gettysburg Borough, Straban Township
VIII. ADDITIONAL COMMENTS:	
PLEASE SAVE A COPY OF THIS WORKSHEET PRIOR TO ENTERING DATA FOR THE NEXT MAGISTERIAL DISTRICT.	



MAGISTERIAL DISTRICT REESTABLISHMENT WORKSHEET

PLEASE SUBMIT ONE COPY OF THIS WORKSHEET FOR EACH MAGISTERIAL DISTRICT.

To enter data, press TAB to move between fields.

I.	MAGISTERIAL DISTRICT COURT NUMBER (#####):	51-3-02
II. BREAKDOWN OF MAGISTERIAL DISTRICT - CASELOAD		
A.	Average Total Caseload:	4,091
B.	Difference (%) between this magisterial district's average total caseload and your judicial district's average total caseload:	-12.70%
C.	Difference (%) between this magisterial district's average total caseload and applicable class of county's average total caseload:	4.30%
III. BREAKDOWN OF MAGISTERIAL DISTRICT - WORKLOAD		
A.	Average Total Workload:	37,859
B.	Difference (%) between this magisterial district's average total workload and the judicial district's average total workload:	6.90%
C.	Does this magisterial district have an average total workload that is fifteen percent <i>greater than or less than</i> any other magisterial district within your judicial district:	NO
D.	If YES, how does this difference impact workload equity within your judicial district?	
IV. PROPOSED CHANGE:		
A.	Please indicate any proposed change in this magisterial district. Check all that apply.	<input checked="" type="checkbox"/> Reestablish <input type="checkbox"/> Realign <input type="checkbox"/> Eliminate
B.	What is the proposed effective date (m/d/yyyy):	1/1/2013
V. MAGISTERIAL DISTRICT INFORMATION:		
A.	Magisterial District Judge Name: Daniel S. Bowman	
B.	Term Expiration (m/d/yyyy):	1/3/2016



MAGISTERIAL DISTRICT REESTABLISHMENT WORKSHEET

C. Mandatory Retirement Date (<i>m/d/yyyy</i>):	9/7/2021
D. Office Location (Street, City and Zip code):	45d W. Hanover St. Gettysburg 17325
E. Is the office within the boundaries of the magisterial district:	YES
F. Is the residence of the magisterial district judge within the boundaries of the magisterial district:	YES
G. List any police departments located within this magisterial district:	Bonneauville Borough, Littlestown Borough, McSherrystown Borough, Conewago Township (also, PSP provides coverage in this district)
H. List any major highways within this magisterial district:	Rt. 15/Rt. 30/Rt. 116/Rt. 97/Rt. 194
VI. LIST EXISTING MAGISTERIAL DISTRICT MUNICIPALITIES:	Bonneauville Borough, Littlestown Borough, Mcsherrystown Borough, Conewago Township, Germany Township, Mt. Joy Township, Mt. Pleasant Township, Union Township
VII. LIST PROPOSED MAGISTERIAL DISTRICT MUNICIPALITIES:	No Changes Proposed
VIII. ADDITIONAL COMMENTS:	
PLEASE SAVE A COPY OF THIS WORKSHEET PRIOR TO ENTERING DATA FOR THE NEXT MAGISTERIAL DISTRICT.	



MAGISTERIAL DISTRICT REESTABLISHMENT WORKSHEET

PLEASE SUBMIT ONE COPY OF THIS WORKSHEET FOR EACH MAGISTERIAL DISTRICT.

To enter data, press TAB to move between fields.

I.	MAGISTERIAL DISTRICT COURT NUMBER (#####):	51-3-03
II. BREAKDOWN OF MAGISTERIAL DISTRICT - CASELOAD		
A.	Average Total Caseload:	4,194
B.	Difference (%) between this magisterial district's average total caseload and your judicial district's average total caseload:	-10.50%
C.	Difference (%) between this magisterial district's average total caseload and applicable class of county's average total caseload:	-1.90%
III. BREAKDOWN OF MAGISTERIAL DISTRICT - WORKLOAD		
A.	Average Total Workload:	33,202
B.	Difference (%) between this magisterial district's average total workload and the judicial district's average total workload:	-6.20%
C.	Does this magisterial district have an average total workload that is fifteen percent <i>greater than or less than</i> any other magisterial district within your judicial district:	NO
D.	If YES, how does this difference impact workload equity within your judicial district?	
IV. PROPOSED CHANGE:		
A.	Please indicate any proposed change in this magisterial district. Check all that apply.	<input type="checkbox"/> Reestablish <input checked="" type="checkbox"/> Realign <input type="checkbox"/> Eliminate
B.	What is the proposed effective date (m/d/yyyy):	1/1/2013
V. MAGISTERIAL DISTRICT INFORMATION:		
A.	Magisterial District Judge Name: John C. Zepp III	
B.	Term Expiration (m/d/yyyy):	1/2/2012



MAGISTERIAL DISTRICT REESTABLISHMENT WORKSHEET

C. Mandatory Retirement Date (m/d/yyyy):	10/12/2022
D. Office Location (Street, City and Zip code):	40 Church Road East Berlin 17316
E. Is the office within the boundaries of the magisterial district:	YES
F. Is the residence of the magisterial district judge within the boundaries of the magisterial district:	YES
G. List any police departments located within this magisterial district:	East Berlin Borough, Eastern Adams Regional, York Springs/Latimore Township, Reading Township, (also, PSP provides coverage in this district)
H. List any major highways within this magisterial district:	Rt. 15/Rt. 30/Rt. 94/Rt. 234
VI. LIST EXISTING MAGISTERIAL DISTRICT MUNICIPALITIES:	Abbottstown Borough, East Berlin Borough, New Oxford Borough, York Springs Borough, Berwick Township, Hamilton Township, Huntington Township, Latimore Township, Oxford Township, Reading Township
VII. LIST PROPOSED MAGISTERIAL DISTRICT MUNICIPALITIES:	Abbottstown Borough, East Berlin Borough, New Oxford Borough, York Springs Borough, Berwick Township, Hamilton Township, Huntington Township, Latimore Township, Oxford Township, Reading Township, Tyrone Township
VIII. ADDITIONAL COMMENTS:	Magisterial District Justice Zepp did not run for re-election and his term will expire as noted above. The newly-elected Magisterial District Justice is Tony Little. His term begins 01/03/12. He will maintain the same office, located within the boundaries of the magisterial district, and he resides within the boundaries of the magisterial district.
PLEASE SAVE A COPY OF THIS WORKSHEET PRIOR TO ENTERING DATA FOR THE NEXT MAGISTERIAL DISTRICT.	



MAGISTERIAL DISTRICT REESTABLISHMENT WORKSHEET

PLEASE SUBMIT ONE COPY OF THIS WORKSHEET FOR EACH MAGISTERIAL DISTRICT.

To enter data, press TAB to move between fields.

I.	MAGISTERIAL DISTRICT COURT NUMBER (#####):	51-3-04
II. BREAKDOWN OF MAGISTERIAL DISTRICT - CASELOAD		
A.	Average Total Caseload:	4,423
B.	Difference (%) between this magisterial district's average total caseload and your judicial district's average total caseload:	-5.60%
C.	Difference (%) between this magisterial district's average total caseload and applicable class of county's average total caseload:	3.50%
III. BREAKDOWN OF MAGISTERIAL DISTRICT - WORKLOAD		
A.	Average Total Workload:	33,306
B.	Difference (%) between this magisterial district's average total workload and the judicial district's average total workload:	-5.90%
C.	Does this magisterial district have an average total workload that is fifteen percent <i>greater than or less than</i> any other magisterial district within your judicial district:	NO
D.	If YES, how does this difference impact workload equity within your judicial district?	
IV. PROPOSED CHANGE:		
A.	Please indicate any proposed change in this magisterial district. Check all that apply.	<input checked="" type="checkbox"/> Reestablish <input type="checkbox"/> Realign <input type="checkbox"/> Eliminate
B.	What is the proposed effective date (m/d/yyyy):	1/1/2013
V. MAGISTERIAL DISTRICT INFORMATION:		
A.	Magisterial District Judge Name: Mark D. Beauchat	
B.	Term Expiration (m/d/yyyy):	1/2/2012



MAGISTERIAL DISTRICT REESTABLISHMENT WORKSHEET

C. Mandatory Retirement Date (<i>m/d/yyyy</i>):	8/10/2033
D. Office Location (Street, City and Zip code):	2267 Fairfield Road Gettysburg 17325
E. Is the office within the boundaries of the magisterial district:	YES
F. Is the residence of the magisterial district judge within the boundaries of the magisterial district:	YES
G. List any police departments located within this magisterial district:	Biglerville Borough, Carroll Valley Borough, Hamiltonban Township, Liberty Township, Cumberland Township (also, PSP provides coverage in this district)
H. List any major highways within this magisterial district:	Rt. 15/Rt. 30/Rt. 34/Rt. 234/Rt. 233/Rt. 16
VI. LIST EXISTING MAGISTERIAL DISTRICT MUNICIPALITIES:	Arendtsville Borough, Bendersville Borough, Biglerville Borough, Carroll Valley Borough, Fairfield Borough, Butler Township, Cumberland Township, Franklin Township, Freedom Township, Hamiltonban Township, Highland Township, Liberty Township, Menallen Township
VII. LIST PROPOSED MAGISTERIAL DISTRICT MUNICIPALITIES:	No Changes Proposed
VIII. ADDITIONAL COMMENTS:	Re-elected to new term in November 2011, effective 01/03/12.
PLEASE SAVE A COPY OF THIS WORKSHEET PRIOR TO ENTERING DATA FOR THE NEXT MAGISTERIAL DISTRICT.	

**COURT ADMINISTRATION
ADAMS COUNTY COURTHOUSE
117 BALTIMORE STREET, GETTYSBURG, PA 17325**

DONALD A. FENNIMORE
DISTRICT COURT ADMINISTRATOR

(717) 337-9846
FAX: (717) 337-5780

Joseph Mittleman
Director, Judicial Programs
Administrative Office of PA Courts
1515 Market Street
Philadelphia, PA 19101

Re: Magisterial District Reestablishment-Adams County

Dear Mr. Mittleman:

Enclosed please find the Judicial District Summary Worksheet, which was missing from our initial submission on January 23, 2012 of the Adams County Magisterial District Reestablishment Report.

If you have any questions or need additional information, please contact me at your convenience.

Respectfully,



Donald Fennimore
District Court Administrator

Pc: The Honorable John D. Kuhn (via e-mail)
Amy Kehner, AOPC (via e-mail)



JUDICIAL DISTRICT SUMMARY WORKSHEET

PLEASE SUBMIT ONE COPY OF THE JUDICIAL DISTRICT SUMMARY WORKSHEET.

To enter data, press TAB to move between fields.

I. JUDICIAL DISTRICT NUMBER:	51
A. What is the class of county?	5
B. What is the percentage difference in the average annual caseload between this judicial district and the applicable class of county?	9.60%
II. PROPOSED ACTIONS:	
A. List existing magisterial districts: 51-3-01, 51-3-02, 51-3-03, 51-3-04	
B. Does this judicial district have an annual average caseload that is ten percent above the average caseload for the applicable class of county?	NO
1. If the answer to II. B. above is <i>NO</i> , are eliminations proposed?	NO
a) List magisterial districts proposed for elimination.	
b) If no eliminations are proposed based on II. B. above, what are the factors for this decision? Unknown attrition, 0.4% away from AOPC cutoff, anticipated population growth in County in next 10 years, existing locations not adequate to accommodate reduction and redistribution of staff, increase in travel time across county (see report for full explanation)	
2. If the answer to II. B. above is <i>YES</i> , are eliminations proposed?	Choose Yes or No
a) List magisterial districts proposed for elimination.	
C. Are any magisterial districts proposed for reestablishment?	YES
1. List magisterial districts proposed for reestablishment. 51-3-02, 51-3-04	

AOPC

JUDICIAL DISTRICT SUMMARY WORKSHEET

D. Are any magisterial districts proposed for realignment?	YES
1. List magisterial districts proposed for realignment. 51-3-01, 51-3-03	
III. NIGHT AND CENTRAL COURT OPERATIONS	
A. Is there a night court operating within the judicial district?	NO
B. Is there a central court operating within the judicial district?	YES
C. Note comments regarding how night, central or other similar court programs impact operations within the judicial district. Central Court has streamlined the Preliminary Hearing process to the benefit of attorneys, police departments, Sheriff's department, victim, witnesses and defendants. Truancy Court is designed to improve school attendance while assisting children and families when possible to avoid having to pay fines and costs associated with violation of school attendance in exchange for their full participation	
IV. PUBLIC COMMENT	
A. A request for public comment was posted:	YES
B. Comments were received:	YES
C. Comments are attached:	NO
V. ADDITIONAL REMARKS CONCERNING PROPOSAL:	
The only comment received came verbally from Magisterial District Judge Mark Beauchat, with a summation of his verbal remarks incorporated into the written report.	
VI. DATE SUBMITTED TO AOPC:	JANUARY 23, 2012
VII. PRESIDENT JUDGE NAME:	The Honorable John D. Kuhn
Signature	