

Magisterial District Reestablishment 2012

Judicial District Summary Sheet

County Name: **Centre**

Judicial District #: **49**

Caseload and Magisterial District Elimination Analysis

The difference between the average annual caseload of Judicial District # 49 and its class of county: **37%**

Note: If the difference is >/= 10% no proposed eliminations or justification is required.

Summary of Proposed Actions

49-1-01 Reestablish

49-2-01 Realign

49-3-02 Realign

49-3-03 Reestablish

49-3-04 Realign

49-3-05 Reestablish

Night/Central/Alternate Court Operations

This judicial district utilizes the following diversionary courts to assist in balancing workload:

Central Court: **Yes** Night Court: **No**

Central Court is held every Wednesday where two MDJs are assigned to preside over hearings and waivers, eliminating the need for an MDJ to hold preliminary hearings in his/her office.

Public Comment

Proposal Posted for Public Comment: **Yes** Comments Received: **No**

Calculations reflect reclassification as a 4th class county. Variations between AOPC's statistics and those used by the county are due to data review and clean up by the county.

Magisterial District Reestablishment 2012

County Name: Centre

Judicial District #: 49

Existing and Proposed Magisterial Districts

Magisterial District #: 49-1-01

Proposed Action: Reestablish

Average Annual Caseload:	6,327	Average Annual Workload:	56,777
% Difference in Caseload (magisterial district/judicial district):	-5.00	% Difference in Workload (magisterial district/judicial district):	-22.00
% Difference in Caseload (magisterial district/class of county):	-44.00	<i>Workload outside of a +/- 15% range requires realignment or support to maintain current configuration.</i>	

This is one of two districts serving State College Borough where caseload is generated primarily by Penn State University.

Magisterial District Judge & Office Information:

Carmine W. Prestia , Jr.

131 South Fraser Street P.O. Box 238

State College, PA 16804

Birthdate: 10-15-48

Mandatory Retirement: 2018

Term Expires: 1-5-14

Existing Geography:

STATE COLLEGE VTD EAST ED 02; STATE COLLEGE VTD EAST ED 03; STATE COLLEGE VTD EAST ED 04; STATE COLLEGE VTD EAST CENTRAL ED 02; STATE COLLEGE VTD EAST CENTRAL ED 03; STATE COLLEGE VTD SOUTH ED 02; STATE COLLEGE VTD SOUTH CENTRAL ED 01; STATE COLLEGE VTD SOUTH CENTRAL ED 02; STATE COLLEGE VTD SOUTHEAST; STATE COLLEGE VTD WEST CENTRAL ED 02

Proposed Geography:

STATE COLLEGE VTD EAST ED 02; STATE COLLEGE VTD EAST ED 03; STATE COLLEGE VTD EAST ED 04; STATE COLLEGE VTD EAST CENTRAL ED 02; STATE COLLEGE VTD EAST CENTRAL ED 03; STATE COLLEGE VTD SOUTH ED 02; STATE COLLEGE VTD SOUTH CENTRAL ED 01; STATE COLLEGE VTD SOUTH CENTRAL ED 02; STATE COLLEGE VTD SOUTHEAST; STATE COLLEGE VTD WEST CENTRAL ED 02

Office within district: Yes

Residence within district: Yes

Police Departments: State College Police Dept., Penn State University Police Dept., PA State Police Rockview

Major Highways: Only borough streets

Existing and Proposed Magisterial Districts

Magisterial District #: 49-2-01

Proposed Action: Realign

Average Annual Caseload:	8,706	Average Annual Workload:	66,827
% Difference in Caseload (magisterial district/judicial district):	-44.00	% Difference in Workload (magisterial district/judicial district):	44.00
% Difference in Caseload (magisterial district/class of county):	98.00		

Workload outside of a +/- 15% range requires realignment or support to maintain current configuration.

Magisterial District Judge & Office Information:

Leslie A. Dutchcot

1524 West College Avenue

State College, PA 16801

Birthdate: 1-27-74

Mandatory Retirement: 2044

Term Expires: 1-5-14

Existing Geography:

COLLEGE TWP VTD EAST; COLLEGE TWP VTD NORTH; COLLEGE TWP VTD SOUTH; COLLEGE TWP VTD WEST; FERGUSON TWP VTD EAST; FERGUSON TWP VTD NORTH ED 01; FERGUSON TWP VTD NORTH ED 02; FERGUSON TWP VTD NORTHEAST ED 01; FERGUSON TWP VTD NORTHEAST ED 02; FERGUSON TWP VTD WEST; HALFMOON TWP Voting District; PATTON TWP VTD NORTH ED 01; PATTON TWP VTD NORTH ED 02; PATTON TWP VTD SOUTH ED 01; PATTON TWP VTD SOUTH ED 02; PATTON TWP VTD SOUTH ED 03; FERGUSON TWP VTD WEST CENTRAL; FERGUSON TWP VTD NORTH ED 03

Proposed Geography:

COLLEGE TWP VTD NORTH; COLLEGE TWP VTD WEST; FERGUSON TWP VTD EAST; FERGUSON TWP VTD NORTH ED 01; FERGUSON TWP VTD NORTH ED 02; FERGUSON TWP VTD NORTHEAST ED 01; FERGUSON TWP VTD NORTHEAST ED 02; FERGUSON TWP VTD WEST; HALFMOON TWP Voting District; PATTON TWP VTD NORTH ED 01; PATTON TWP VTD NORTH ED 02; PATTON TWP VTD SOUTH ED 01; PATTON TWP VTD SOUTH ED 02; PATTON TWP VTD SOUTH ED 03; FERGUSON TWP VTD WEST CENTRAL; FERGUSON TWP VTD NORTH ED 03

Office within district: Yes

Residence within district: Yes

Police Departments: Ferguson Township Police Dept., Patton Township Police Dept., State College Police Dept., Penn State University Police Dept., PA State Police - Rockview and Philipsburg

Major Highways: I-99

Existing and Proposed Magisterial Districts

Magisterial District #: 49-3-02

Proposed Action: Realign

Average Annual Caseload:	8,095	Average Annual Workload:	62,919
% Difference in Caseload (magisterial district/judicial district):	-34.00	% Difference in Workload (magisterial district/judicial district):	36.00
% Difference in Caseload (magisterial district/class of county):	-84.00	<i>Workload outside of a +/- 15% range requires realignment or support to maintain current configuration.</i>	

Magisterial District Judge & Office Information:

Daniel R. Hoffman , II	Birthdate:	11-2-49
3555 Benner Pike, Suite C	Mandatory Retirement:	2019
Bellefonte, PA 16823	Term Expires:	12-31-17

Existing Geography:

BELLEFONTE VTD NORTH; BELLEFONTE VTD NORTHEAST; BELLEFONTE VTD SOUTH; BELLEFONTE VTD SOUTHEAST; BELLEFONTE VTD WEST; BENNER TWP VTD NORTH; BENNER TWP VTD SOUTH; BOGGS TWP VTD EAST; BOGGS TWP VTD WEST; CURTIN TWP VTD NORTH; CURTIN TWP VTD SOUTH; HOWARD TWP Voting District; HOWARD Voting District; LIBERTY TWP Voting District; MARION TWP Voting District; MILESBURG Voting District; SPRING TWP VTD NORTH; SPRING TWP VTD SOUTH; SPRING TWP VTD WEST; UNION TWP Voting District; UNIONVILLE Voting District; WALKER TWP VTD EAST; WALKER TWP VTD WEST; SPRING TWP VTD SOUTHWEST; SPRING TWP VTD EAST

Proposed Geography:

BELLEFONTE VTD NORTH; BELLEFONTE VTD NORTHEAST; BELLEFONTE VTD SOUTH; BELLEFONTE VTD SOUTHEAST; BELLEFONTE VTD WEST; BENNER TWP VTD NORTH; BENNER TWP VTD SOUTH; BOGGS TWP VTD EAST; BOGGS TWP VTD WEST; CURTIN TWP VTD NORTH; CURTIN TWP VTD SOUTH; HOWARD TWP Voting District; HOWARD Voting District; LIBERTY TWP Voting District; MARION TWP Voting District; MILESBURG Voting District; SPRING TWP VTD NORTH; SPRING TWP VTD WEST; UNION TWP Voting District; UNIONVILLE Voting District; WALKER TWP VTD EAST; WALKER TWP VTD WEST; SPRING TWP VTD EAST

Office within district: Yes

Residence within district: Yes

Police Departments: Bellefonte Borough Police Dept., Spring Township Police Dept., PA State Police - Rockview and Philipsburg

Major Highways: I-80, I-99, Rte. 150, Rte. 26, Rte. 322

Existing and Proposed Magisterial Districts

Magisterial District #: 49-3-03

Proposed Action: Reestablish

Average Annual Caseload:	6,082	Average Annual Workload:	29,388
% Difference in Caseload (magisterial district/judicial district):	-1.00	% Difference in Workload (magisterial district/judicial district):	-37.00
% Difference in Caseload (magisterial district/class of county):	38.00	<i>Workload outside of a +/- 15% range requires realignment or support to maintain current configuration.</i>	

This district is in a very rural area with a depressed economy. There are no local police agencies and is patrolled by the PSP. News reports indicate that PSP Philipsburg may be slated for closure - if this happens, case filings will change.

Magisterial District Judge & Office Information:

Allen W. Sinclair	Birthdate:	6-17-67
Moshannon Valley Enterprise Center II, 118 Enterprise Drive	Mandatory Retirement:	2037
Philipsburg, PA 16866	Term Expires:	12-31-17

Existing Geography:

BURNSIDE TWP Voting District; HUSTON TWP Voting District; PHILIPSBURG VTD 01; PHILIPSBURG VTD 02; PHILIPSBURG VTD 03; PORT MATILDA Voting District; RUSH TWP VTD EAST; RUSH TWP VTD NORTH; RUSH TWP VTD SOUTH; RUSH TWP VTD WEST; SNOW SHOE TWP VTD EAST; SNOW SHOE TWP VTD WEST; SNOW SHOE Voting District; SOUTH PHILIPSBURG Voting District; TAYLOR TWP Voting District; WORTH TWP Voting District

Proposed Geography:

BURNSIDE TWP Voting District; HUSTON TWP Voting District; PHILIPSBURG VTD 01; PHILIPSBURG VTD 02; PHILIPSBURG VTD 03; PORT MATILDA Voting District; RUSH TWP VTD EAST; RUSH TWP VTD NORTH; RUSH TWP VTD SOUTH; RUSH TWP VTD WEST; SNOW SHOE TWP VTD EAST; SNOW SHOE TWP VTD WEST; SNOW SHOE Voting District; SOUTH PHILIPSBURG Voting District; TAYLOR TWP Voting District; WORTH TWP Voting District

Office within district: Yes

Residence within district: Yes

Police Departments: PA State Police - Philipsburg and Rockview

Major Highways:

Existing and Proposed Magisterial Districts

Magisterial District #: 49-3-04

Proposed Action: Realign

Average Annual Caseload:	2,222	Average Annual Workload:	16,208
% Difference in Caseload (magisterial district/judicial district):	-63.00	% Difference in Workload (magisterial district/judicial district):	-65.00
% Difference in Caseload (magisterial district/class of county):	-50.00	<i>Workload outside of a +/- 15% range requires realignment or support to maintain current configuration.</i>	

This district has both the lowest caseload and workload in the county and will be realigned to add approximately 2,800 cases.

Magisterial District Judge & Office Information:

Thomas N. Jordan	Birthdate:	3-28-57
2795 Earlstown Road	Mandatory Retirement:	2027
Centre Hall, PA 16828	Term Expires:	1-3-16

Existing Geography:

CENTRE HALL Voting District; GREGG TWP Voting District; HAINES TWP Voting District; HARRIS TWP VTD EAST; HARRIS TWP VTD WEST; MILES TWP VTD EAST; MILES TWP VTD WEST; MILLHEIM Voting District; PENN TWP Voting District; POTTER TWP VTD NORTH; POTTER TWP VTD SOUTH

Proposed Geography:

CENTRE HALL Voting District; COLLEGE TWP VTD EAST; COLLEGE TWP VTD SOUTH; GREGG TWP Voting District; HAINES TWP Voting District; HARRIS TWP VTD EAST; HARRIS TWP VTD WEST; MILES TWP VTD EAST; MILES TWP VTD WEST; MILLHEIM Voting District; PENN TWP Voting District; POTTER TWP VTD NORTH; POTTER TWP VTD SOUTH; SPRING TWP VTD SOUTH; SPRING TWP VTD SOUTHWEST

Office within district: Yes

Residence within district: Yes

Police Departments: PA State Police - Rockview, State College Police Dept.

Major Highways: Rte. 322, Rte. 144. Rte. 192. Rte. 45

Existing and Proposed Magisterial Districts

Magisterial District #: 49-3-05

Proposed Action: Reestablish

Average Annual Caseload:	4,746	Average Annual Workload:	46,225
% Difference in Caseload (magisterial district/judicial district):	-21.00	% Difference in Workload (magisterial district/judicial district):	0.00
% Difference in Caseload (magisterial district/class of county):	-8.00	<i>Workload outside of a +/- 15% range requires realignment or support to maintain current configuration.</i>	

This district is one of two magisterial districts serving State College Borough - primarily Penn State University.

Magisterial District Judge & Office Information:

(Vacant) Grine
121 South Pugh Street P.O. Box 10099
State College, PA 16805

Birthdate:
Mandatory Retirement:
Term Expires:

Existing Geography:

STATE COLLEGE VTD EAST ED 01; STATE COLLEGE VTD EAST CENTRAL ED 01; STATE COLLEGE VTD NORTH; STATE COLLEGE VTD NORTHEAST; STATE COLLEGE VTD NORTHWEST; STATE COLLEGE VTD SOUTH ED 01; STATE COLLEGE VTD WEST ED 01; STATE COLLEGE VTD WEST ED 02; STATE COLLEGE VTD WEST CENTRAL ED 01

Proposed Geography:

STATE COLLEGE VTD EAST ED 01; STATE COLLEGE VTD EAST CENTRAL ED 01; STATE COLLEGE VTD NORTH; STATE COLLEGE VTD NORTHEAST; STATE COLLEGE VTD NORTHWEST; STATE COLLEGE VTD SOUTH ED 01; STATE COLLEGE VTD WEST ED 01; STATE COLLEGE VTD WEST ED 02; STATE COLLEGE VTD WEST CENTRAL ED 01

Office within district: Yes

Residence within district: Yes

Police Departments: State College Police Dept., Penn State University Police, PA State Police - Rockview

Major Highways:

Magisterial District Reestablishment 2012

Magisterial District Caseload/Workload Analysis

Judicial District and Class of County Comparison Statistics

Centre / 49

Judicial District Average Caseload			
2011 Class	2011 Filings	2012 Class	2012 Filings
5	6,470	4	6,470

2011 Class of County Caseload Averages								
2011 Class	CR	PC	TR	NT	CV	LT	MD	Total
5	409	144	2,559	688	289	101	85	4,275

2012 Class of County Caseload Averages								
2012 Class	CR	PC	TR	NT	CV	LT	MD	Total
4	392	141	2,635	733	262	92	66	4,320

Notes on Analysis:

CASELOAD: The statistics provided are used to compare the average annual caseload of each magisterial district to the class of county average as one measure to assess whether any changes should be proposed. Reported values are provided by the judicial district; the comparison values are provided by the MDJS.

WORKLOAD: Where the average annual workload of a magisterial district is greater/less than 15% of the judicial district's workload average, the judicial district should realign - OR - explain why this difference does not impact workload equity within the judicial district. A value that is green indicates it is within range; red requires justification if realignment or elimination are not proposed.

Judicial District Caseload Averages		
Centre	2011	2012
Class	5	4
CR	433	433
NT	1,025	1,025
PC	200	200
TR	4,404	4,404
CV	244	244
LT	102	102
MD	62	62
AVG	6,470	6,470

Centre	2011	2012
Class	5	4
CR	15,898	15,898
NT	11,013	11,013
PC	2,149	2,149
TR	10,042	10,042
CV	2,751	2,751
LT	1,474	1,474
MD	2,016	2,016
-15 % Workload	38,541	38,541
Average Workload	45,343	45,343
+ 15% Workload	52,144	52,144

Magisterial District Caseload/Workload Analysis

49-1-01

Reestablish

CASELOAD

Average Total Annual Caseload:

Reported	AOPC	
6,327	2011	2012
-5	-2.22%	-2.22%
-44	48.01%	46.45%

Magisterial District Average: Judicial District Average:

Magisterial District Average: Class of County Average:

WORKLOAD

Average Total Annual Workload:

Reported	AOPC	
56,777	2011	2012
-22	25.22%	25.22%

Magisterial District Average: Judicial District Average:

49-2-01

Realign

CASELOAD

Average Total Annual Caseload:

Reported	AOPC	
8,706	2011	2012
-44	34.55%	34.55%
98	103.67%	101.52%

Magisterial District Average: Judicial District Average:

Magisterial District Average: Class of County Average:

WORKLOAD

Average Total Annual Workload:

Reported	AOPC	
66,827	2011	2012
44	47.38%	47.38%

Magisterial District Average: Judicial District Average:

Magisterial District Caseload/Workload Analysis

49-3-02 Realign

CASELOAD

Average Total Annual Caseload:

Reported	AOPC	
	2011	2012
8,095		

Magisterial District Average: Judicial District Average:

-34	25.11%	25.11%
-----	--------	--------

Magisterial District Average: Class of County Average:

-84	89.37%	87.38%
-----	--------	--------

WORKLOAD

Average Total Annual Workload:

Reported	AOPC	
	2011	2012
62,919		

Magisterial District Average: Judicial District Average:

36	38.76%	38.76%
-----------	--------	--------

49-3-03 Reestablish

CASELOAD

Average Total Annual Caseload:

Reported	AOPC	
	2011	2012
6,082		

Magisterial District Average: Judicial District Average:

-1	-6.00%	-6.00%
----	--------	--------

Magisterial District Average: Class of County Average:

38	42.28%	40.78%
----	--------	--------

WORKLOAD

Average Total Annual Workload:

Reported	AOPC	
	2011	2012
29,388		

Magisterial District Average: Judicial District Average:

-37	-35.19%	-35.19%
------------	---------	---------

49-3-04 Realign

CASELOAD

Average Total Annual Caseload:

Reported	AOPC	
	2011	2012
2,222		

Magisterial District Average: Judicial District Average:

-63	-65.66%	-65.66%
-----	---------	---------

Magisterial District Average: Class of County Average:

-50	-48.02%	-48.57%
-----	---------	---------

WORKLOAD

Average Total Annual Workload:

Reported	AOPC	
	2011	2012
16,208		

Magisterial District Average: Judicial District Average:

-65	-64.25%	-64.25%
------------	---------	---------

Magisterial District Caseload/Workload Analysis

49-3-05

Reestablish

CASELOAD

Average Total Annual Caseload:

Reported	AOPC	
4,746	2011	2012

Magisterial District Average: Judicial District Average:

-21	-26.65%	-26.65%
-----	---------	---------

Magisterial District Average: Class of County Average:

-8	11.03%	9.86%
----	--------	-------

WORKLOAD

Average Total Annual Workload:

Reported	AOPC	
46,225	2011	2012

Magisterial District Average: Judicial District Average:

0	1.95%	1.95%
---	-------	-------

**PUBLIC NOTICE
OF
CENTRE COUNTY
2012 REESTABLISHMENT PLAN**

The Supreme Court of Pennsylvania mandates every county in the Commonwealth of Pennsylvania to submit a Reestablishment Plan for the Magisterial Districts as required under 42 Pa. C.S.A. Subsection 1503. This is required every ten years and is directly related to the Federal decennial census.

The following factors were taken into consideration during the development of this plan: guidelines as set forth by the Administrative Office of Pennsylvania Courts, case filing statistics and workload statistics for criminal, non-traffic, private complaint, traffic, civil, landlord/tenant and miscellaneous filed in the six Magisterial District Courts in Centre County, comparison of how each magisterial district within the judicial district compares with each other and other magisterial districts within the designated class of county.

The Centre County Reestablishment Plan is posted for public comment prior to submission to the Administrative Office of Pennsylvania Courts. This document can be found on Centre County's website www.co.centre.pa.us and is, also, available in each of the Centre County Magisterial District Courts and the Court Administrator's Office located in Room 208 of the Centre County Courthouse, 102 South Allegheny Street, Bellefonte, PA 16823. Public comments will be accepted from February 28, 2012 through March 28, 2012. Comments must be in writing and bear the name and address of the sender either by email to bggallo@co.centre.pa.us or via US mail to Barbara G. Gallo, Assistant Court Administrator, Room 208, Centre County Courthouse, 102 South Allegheny Street, Bellefonte, PA 16823.

CENTRE COUNTY 2012 REESTABLISHMENT PLAN

As a result of 2010 census, Centre County was reclassified from a Fifth Class County to a Fourth Class County; therefore all calculations are based on the Fourth Class County status.

Centre County's average caseload is 6,029 and the average caseload for Fourth Class counties is 4,408, which makes the variance for Centre County 37% above average. Centre County is not proposing elimination of any Magisterial Districts. This decision is based on the caseload, the variance and the increasing population of Centre County. Centre County currently has six Magisterial Districts. This is the lowest number of Magisterial Districts of any Fourth Class County. However, Centre County will not be requesting additional Magisterial Districts.

Magisterial District 49-3-05 (State College II) is below the Centre County average variance, but is not slated for realignment. The Borough of State College was realigned after the 2000 census and divided into two districts, 49-1-01 (State College) and 49-3-05 (State College II). The caseload for the entire Borough of State College would well exceed the average variance for one Magisterial District. District 49-3-05 (State College II) is currently vacant and is being served by a Senior Magisterial Judge two days a week. Consequently, some cases are being filed in other Magisterial Courts which have concurrent jurisdiction. Once a Magisterial Judge is elected, we project the caseload in this district will fall within the state's 15% variance standard.

The Reestablishment Plan for Centre County includes the realignment of three Magisterial Districts to more evenly distribute the caseload. The variance of Magisterial Districts 49-2-01 (Centre Region) and Magisterial District 49-3-02 (Bellefonte) are above the average for Centre County. Two voter precincts within each of these districts will be transferred to Magisterial District 49-3-04 (Centre Hall) to increase the caseload for this district and bring the variance closer to the state's standard.

The Court proposes the following changes to realign each of these three Magisterial Districts:

-Realign Spring Township voter precincts 79 South and 87 Southwest from Magisterial District 49-3-02 (Bellefonte) to Magisterial District 49-3-04 (Centre Hall), which will result in an estimated case shift of approximately 1,000 cases per year.

-Realign College Township voter precincts 42 South and 43 East from Magisterial District 49-2-01 (Centre Region) to Magisterial District 49-3-04 (Centre Hall), which will result in an estimated case shift of approximately 1,800 cases per year.

**Projected Caseload for Centre County
Magisterial Districts as the Result of
Reestablishment**

49th Judicial District	Projected Average Caseload	Variance
AVERAGE	6029	
MDJ 49-1-01	6,327	-5%
MDJ 49-2-01	6,906	-15%
MDJ 49-3-02	7,095	-18%
MDJ 49-3-03	6,082	-1%
MDJ 49-3-04	5,022	17%
MDJ 49-3-05	4,746	21%

The number of cases estimated to be realigned is based on police agencies' estimates for arrests for traffic, non-traffic and criminal cases and a review by Court staff within the Magisterial Districts for the number of civil and landlord/tenant cases for the years of 2009 and 2010 in these four voter precincts.

The Court proposes this realignment becomes effective January 1, 2013.



JUDICIAL DISTRICT SUMMARY WORKSHEET

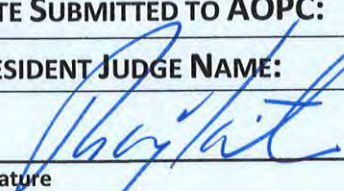
PLEASE SUBMIT ONE COPY OF THE JUDICIAL DISTRICT SUMMARY WORKSHEET.

To enter data, press TAB to move between fields.

I.	JUDICIAL DISTRICT NUMBER:	49
A.	Wh at is the class of county?	4
B.	Wh at is the percentage difference in the average annual caseload between this judicial district and the applicable class of county?	37%
II.	PROPOSED ACTIONS:	
A.	List existing magisterial districts: 49-1-01 49-2-01 49-3-02 49-3-03 49-3-04 49-3-05	
B.	Does this judicial district have an annual average caseload that is ten percent above the average caseload for the applicable class of county? 1. If the answer to II. B. above is <i>NO</i> , are eliminations proposed? a)List magisterial districts proposed for elimination. b)If no eliminations are proposed based on II. B. above, what are the factors for this decision? 2. If the answer to II. B. above is <i>YES</i> , are eliminations proposed? a)List magisterial districts proposed for elimination.	YES Choose Yes or No NO
C.	Are any magisterial districts proposed for reestablishment? 1. List magisterial districts proposed for reestablishment.	NO
D.	Are any magisterial districts proposed for realignment? 1. List magisterial districts proposed for realignment. 49-2-01 49-3-02 49-3-04	YES

AOPC

JUDICIAL DISTRICT SUMMARY WORKSHEET

III. NIGHT AND CENTRAL COURT OPERATIONS	
A. Is there a night court operating within the judicial district?	NO
B. Is there a central court operating within the judicial district?	YES
C. Note comments regarding how night, central or other similar court programs impact operations within the judicial district. Central Court is held every Wednesday in the Centre County Courthouse. Two Magisterial District Judges are assigned to preside over hearings and waivers. Central Court eliminates the need for each Magisterial Judge to hold preliminary hearings in their offices; consequently, allowing more time to devote to processing other cases and operations of their Court.	
IV. PUBLIC COMMENT	
A. A request for public comment was posted:	YES
B. Comments were received:	NO
C. Comments are attached:	NO
V. ADDITIONAL REMARKS CONCERNING PROPOSAL:	
This proposal was put on the Centre County website for public comment for a thirty-day period. An article was published in the Centre Daily Times on February 29, 2012 explaining the Court's proposal. Copies of the proposal were in the Court Administrator's Office and the six Magisterial District Courts for public review, as well. No public comments were received either by email or US mail.	
VI. DATE SUBMITTED TO AOPC:	MARCH 30, 2012
VII. PRESIDENT JUDGE NAME:	Thomas King Kistler
Signature	



MAGISTERIAL DISTRICT REESTABLISHMENT WORKSHEET

PLEASE SUBMIT ONE COPY OF THIS WORKSHEET FOR EACH MAGISTERIAL DISTRICT.

To enter data, press TAB to move between fields.

I.	MAGISTERIAL DISTRICT COURT NUMBER (#####):	49-1-01
II. BREAKDOWN OF MAGISTERIAL DISTRICT - CASELOAD		
A.	Average Total Caseload:	6,327
B.	Difference (%) between this magisterial district's average total caseload and your judicial district's average total caseload:	-5%
C.	Difference (%) between this magisterial district's average total caseload and applicable class of county's average total caseload:	-44%
III. BREAKDOWN OF MAGISTERIAL DISTRICT - WORKLOAD		
A.	Average Total Workload:	56,777
B.	Difference (%) between this magisterial district's average total workload and the judicial district's average total workload:	-22%
C.	Does this magisterial district have an average total workload that is fifteen percent <i>greater than or less than</i> any other magisterial district within your judicial district:	YES
D.	If YES, how does this difference impact workload equity within your judicial district? The average caseload for this district is only slightly above the County's average caseload. No change is proposed for this district.	
IV. PROPOSED CHANGE:		
A.	Please indicate any proposed change in this magisterial district. Check all that apply.	<input type="checkbox"/> Reestablish <input type="checkbox"/> Realign <input type="checkbox"/> Eliminate
B.	What is the proposed effective date (m/d/yyyy):	
V. MAGISTERIAL DISTRICT INFORMATION:		
A.	Magisterial District Judge Name: Carmine Prestia	



MAGISTERIAL DISTRICT REESTABLISHMENT WORKSHEET

B. Term Expiration (m/d/yyyy):	1/1/2014
C. Mandatory Retirement Date (m/d/yyyy):	10/15/2018
D. Office Location (Street, City and Zip code):	224 South Fraser Street State College, PA 16801
E. Is the office within the boundaries of the magisterial district:	YES
F. Is the residence of the magisterial district judge within the boundaries of the magisterial district:	YES
G. List any police departments located within this magisterial district:	State College Police Department, Penn State University Police Department and PSP Rockview
H. List any major highways within this magisterial district:	Only Borough streets
VI. LIST EXISTING MAGISTERIAL DISTRICT MUNICIPALITIES:	Half Of State College Borough
VII. LIST PROPOSED MAGISTERIAL DISTRICT MUNICIPALITIES:	Same As Above---No Change
VIII. ADDITIONAL COMMENTS:	This district serves a relatively small geographic area which has a unique caseload generated largely by the student population of Penn State University. There are two Magisterial Districts located within the Borough with equitable caseload.
PLEASE SAVE A COPY OF THIS WORKSHEET PRIOR TO ENTERING DATA FOR THE NEXT MAGISTERIAL DISTRICT.	



MAGISTERIAL DISTRICT REESTABLISHMENT WORKSHEET

PLEASE SUBMIT ONE COPY OF THIS WORKSHEET FOR EACH MAGISTERIAL DISTRICT.

To enter data, press TAB to move between fields.

I.	MAGISTERIAL DISTRICT COURT NUMBER (#####):	49-2-01
II. BREAKDOWN OF MAGISTERIAL DISTRICT - CASELOAD		
A.	Average Total Caseload:	8,706
B.	Difference (%) between this magisterial district's average total caseload and your judicial district's average total caseload:	-44%
C.	Difference (%) between this magisterial district's average total caseload and applicable class of county's average total caseload:	98%
III. BREAKDOWN OF MAGISTERIAL DISTRICT - WORKLOAD		
A.	Average Total Workload:	66,827
B.	Difference (%) between this magisterial district's average total workload and the judicial district's average total workload:	-44%
C.	Does this magisterial district have an average total workload that is fifteen percent <i>greater than or less than</i> any other magisterial district within your judicial district:	YES
D.	If YES, how does this difference impact workload equity within your judicial district? This district is one of two districts that has an average caseload higher than the other Centre County Magisterial Districts. The proposed realignment of two voter precincts from this district will decrease the caseload by approximately 1,800 and establish a more even workload equity.	
IV. PROPOSED CHANGE:		
A.	Please indicate any proposed change in this magisterial district. Check all that apply.	<input type="checkbox"/> Reestablish <input checked="" type="checkbox"/> Realign <input type="checkbox"/> Eliminate
B.	What is the proposed effective date (m/d/yyyy):	1/1/2013
V. MAGISTERIAL DISTRICT INFORMATION:		



MAGISTERIAL DISTRICT REESTABLISHMENT WORKSHEET

A. Magisterial District Judge Name: Leslie Dutchcot	
B. Term Expiration (m/d/yyyy):	1/1/2014
C. Mandatory Retirement Date (m/d/yyyy):	1/27/2044
D. Office Location (Street, City and Zip code):	1524 West College Avenue State College, PA 16801
E. Is the office within the boundaries of the magisterial district:	YES
F. Is the residence of the magisterial district judge within the boundaries of the magisterial district:	YES
G. List any police departments located within this magisterial district:	Ferguson Township Police Department, Patton Township Police Department, State College Police Department, Penn State University Police Department, PSP Rockview and PSP Philipsburg
H. List any major highways within this magisterial district:	Interstate 99
VI. LIST EXISTING MAGISTERIAL DISTRICT MUNICIPALITIES:	College Township, Ferguson Township, Halfmoon Township, Patton Township
VII. LIST PROPOSED MAGISTERIAL DISTRICT MUNICIPALITIES:	Same As Above With The Exception Of Voter Precincts 42 South And 43 East In College Township
VIII. ADDITIONAL COMMENTS:	
PLEASE SAVE A COPY OF THIS WORKSHEET PRIOR TO ENTERING DATA FOR THE NEXT MAGISTERIAL DISTRICT.	



MAGISTERIAL DISTRICT REESTABLISHMENT WORKSHEET

PLEASE SUBMIT ONE COPY OF THIS WORKSHEET FOR EACH MAGISTERIAL DISTRICT.

To enter data, press TAB to move between fields.

I.	MAGISTERIAL DISTRICT COURT NUMBER (#####):	49-3-02
II. BREAKDOWN OF MAGISTERIAL DISTRICT - CASELOAD		
A.	Average Total Caseload:	8,095
B.	Difference (%) between this magisterial district's average total caseload and your judicial district's average total caseload:	-34%
C.	Difference (%) between this magisterial district's average total caseload and applicable class of county's average total caseload:	-84%
III. BREAKDOWN OF MAGISTERIAL DISTRICT - WORKLOAD		
A.	Average Total Workload:	62,919
B.	Difference (%) between this magisterial district's average total workload and the judicial district's average total workload:	-36%
C.	Does this magisterial district have an average total workload that is fifteen percent <i>greater than or less than</i> any other magisterial district within your judicial district:	YES
D.	If YES, how does this difference impact workload equity within your judicial district? This District is one of two Districts that has an average caseload higher than the other Centre County Magisterial Districts. The proposed realignment of two voter precincts from this District will decrease the caseload by approximately 1,000 and establish a more even workload equity.	
IV. PROPOSED CHANGE:		
A.	Please indicate any proposed change in this magisterial district. Check all that apply.	<input type="checkbox"/> Reestablish <input checked="" type="checkbox"/> Realign <input type="checkbox"/> Eliminate
B.	What is the proposed effective date (m/d/yyyy):	1/1/2013
V. MAGISTERIAL DISTRICT INFORMATION:		



MAGISTERIAL DISTRICT REESTABLISHMENT WORKSHEET

A. Magisterial District Judge Name: Daniel Hoffman	
B. Term Expiration (m/d/yyyy):	1/1/2018
C. Mandatory Retirement Date (m/d/yyyy):	11/2/2019
D. Office Location (Street, City and Zip code):	3555 Benner Pike Bellefonte, PA 16823
E. Is the office within the boundaries of the magisterial district:	YES
F. Is the residence of the magisterial district judge within the boundaries of the magisterial district:	YES
G. List any police departments located within this magisterial district:	Bellefonte Borough Police Department, Spring Township Police Department, PSP Rockview and PSP Philipsburg
H. List any major highways within this magisterial district:	Interstate 80, Interstate 99, Route 150, Route 26 and Route 322
VI. LIST EXISTING MAGISTERIAL DISTRICT MUNICIPALITIES:	
	Bellefonte Borough, Howard Borough, Milesburg Borough, Unionville Borough, Benner Township, Boggs Township, Curtin Township, Howard Township, Liberty Township, Marion Township, Spring Township, Union Township, Walker Township
VII. LIST PROPOSED MAGISTERIAL DISTRICT MUNICIPALITIES:	
	Same As Above With The Exception Of Voter Precincts 79 South And 87 Southwest In Spring Township
VIII. ADDITIONAL COMMENTS:	
PLEASE SAVE A COPY OF THIS WORKSHEET PRIOR TO ENTERING DATA FOR THE NEXT MAGISTERIAL DISTRICT.	



MAGISTERIAL DISTRICT REESTABLISHMENT WORKSHEET

PLEASE SUBMIT ONE COPY OF THIS WORKSHEET FOR EACH MAGISTERIAL DISTRICT.

To enter data, press TAB to move between fields.

I.	MAGISTERIAL DISTRICT COURT NUMBER (#####):	49-3-03
II. BREAKDOWN OF MAGISTERIAL DISTRICT - CASELOAD		
A.	Average Total Caseload:	6,082
B.	Difference (%) between this magisterial district's average total caseload and your judicial district's average total caseload:	-1%
C.	Difference (%) between this magisterial district's average total caseload and applicable class of county's average total caseload:	-38%
III. BREAKDOWN OF MAGISTERIAL DISTRICT - WORKLOAD		
A.	Average Total Workload:	29,388
B.	Difference (%) between this magisterial district's average total workload and the judicial district's average total workload:	37%
C.	Does this magisterial district have an average total workload that is fifteen percent <i>greater than or less than</i> any other magisterial district within your judicial district:	YES
D.	If YES, how does this difference impact workload equity within your judicial district? This Magisterial District is located in an extremely rural area with a depressed economy. This district has no local police agencies and is only patrolled by the Pa. State Police. The average caseload for this district is slightly above the County's average caseload. No change is proposed for this district.	
IV. PROPOSED CHANGE:		
A.	Please indicate any proposed change in this magisterial district. Check all that apply.	<input type="checkbox"/> Reestablish <input type="checkbox"/> Realign <input type="checkbox"/> Eliminate
B.	What is the proposed effective date (m/d/yyyy):	
V. MAGISTERIAL DISTRICT INFORMATION:		



MAGISTERIAL DISTRICT REESTABLISHMENT WORKSHEET

A. Magisterial District Judge Name: Allen Sinclair	
B. Term Expiration (m/d/yyyy):	1/1/2018
C. Mandatory Retirement Date (m/d/yyyy):	6/17/2037
D. Office Location (Street, City and Zip code):	118 Enterprise Drive Philipsburg, PA 16866
E. Is the office within the boundaries of the magisterial district:	YES
F. Is the residence of the magisterial district judge within the boundaries of the magisterial district:	YES
G. List any police departments located within this magisterial district:	PSP Philipsburg and PSP Rockview
H. List any major highways within this magisterial district:	Interstate 80, Interstate 99, Route 322
VI. LIST EXISTING MAGISTERIAL DISTRICT MUNICIPALITIES: Philipsburg Borough, Port Matilda Borough, Snow Shoe Borough, Burnside Township, Huston Township, Rush Township, Snow Shoe Township, Taylor Township, Worth Township	
VII. LIST PROPOSED MAGISTERIAL DISTRICT MUNICIPALITIES: Same As Above--No Change	
VIII. ADDITIONAL COMMENTS: News reports have indicated that the Pa. State Police at Philipsburg may be slated for closure. If this occurs, it will impact the number of case filings for this Magisterial District.	
PLEASE SAVE A COPY OF THIS WORKSHEET PRIOR TO ENTERING DATA FOR THE NEXT MAGISTERIAL DISTRICT.	



MAGISTERIAL DISTRICT REESTABLISHMENT WORKSHEET

PLEASE SUBMIT ONE COPY OF THIS WORKSHEET FOR EACH MAGISTERIAL DISTRICT.

To enter data, press TAB to move between fields.

I.	MAGISTERIAL DISTRICT COURT NUMBER (#####):	49-3-04
II. BREAKDOWN OF MAGISTERIAL DISTRICT - CASELOAD		
A.	Average Total Caseload:	2,222
B.	Difference (%) between this magisterial district's average total caseload and your judicial district's average total caseload:	63%
C.	Difference (%) between this magisterial district's average total caseload and applicable class of county's average total caseload:	50%
III. BREAKDOWN OF MAGISTERIAL DISTRICT - WORKLOAD		
A.	Average Total Workload:	16,208
B.	Difference (%) between this magisterial district's average total workload and the judicial district's average total workload:	65%
C.	Does this magisterial district have an average total workload that is fifteen percent <i>greater than or less than</i> any other magisterial district within your judicial district:	YES
D.	If YES, how does this difference impact workload equity within your judicial district? This district has the lowest caseload average and greatest variance in the County. The proposed realignment of four voter precincts from Magisterial Districts 49-2-01 and 49-3-02 establishes workload equity in this district by increasing the caseload by approximately 2,800.	
IV. PROPOSED CHANGE:		
A.	Please indicate any proposed change in this magisterial district. Check all that apply.	<input type="checkbox"/> Reestablish <input checked="" type="checkbox"/> Realign <input type="checkbox"/> Eliminate
B.	What is the proposed effective date (m/d/yyyy):	1/1/2013
V. MAGISTERIAL DISTRICT INFORMATION:		



MAGISTERIAL DISTRICT REESTABLISHMENT WORKSHEET

A. Magisterial District Judge Name: Thomas Jordan	
B. Term Expiration (m/d/yyyy):	1/1/2016
C. Mandatory Retirement Date (m/d/yyyy):	3/28/2027
D. Office Location (Street, City and Zip code):	2795 Earlstown Road Centre Hall, PA 16828
E. Is the office within the boundaries of the magisterial district:	YES
F. Is the residence of the magisterial district judge within the boundaries of the magisterial district:	YES
G. List any police departments located within this magisterial district:	PSP Rockview and State College Police Department
H. List any major highways within this magisterial district:	Route 322, Route 144, Route 192 and Route 45
VI. LIST EXISTING MAGISTERIAL DISTRICT MUNICIPALITIES:	
Centre Hall Borough, Millheim Borough, Gregg Township, Haines Township, Harris Township, Miles Township, Penn Township, Potter Township	
VII. LIST PROPOSED MAGISTERIAL DISTRICT MUNICIPALITIES:	
Centre Hall Borough, Millheim Borough, Gregg Township, Haines Township, Harris Township, Miles Township, Penn Township, Potter Township, Voter Precincts 42 And 43 Of College Township, Voter Precincts 79 And 87 Of Spring Township	
VIII. ADDITIONAL COMMENTS:	
PLEASE SAVE A COPY OF THIS WORKSHEET PRIOR TO ENTERING DATA FOR THE NEXT MAGISTERIAL DISTRICT.	



MAGISTERIAL DISTRICT REESTABLISHMENT WORKSHEET

PLEASE SUBMIT ONE COPY OF THIS WORKSHEET FOR EACH MAGISTERIAL DISTRICT.

To enter data, press TAB to move between fields.

I.	MAGISTERIAL DISTRICT COURT NUMBER (#####):	49-3-05
II. BREAKDOWN OF MAGISTERIAL DISTRICT - CASELOAD		
A.	Average Total Caseload:	4,746
B.	Difference (%) between this magisterial district's average total caseload and your judicial district's average total caseload:	21%
C.	Difference (%) between this magisterial district's average total caseload and applicable class of county's average total caseload:	-8%
III. BREAKDOWN OF MAGISTERIAL DISTRICT - WORKLOAD		
A.	Average Total Workload:	46,225
B.	Difference (%) between this magisterial district's average total workload and the judicial district's average total workload:	0%
C.	Does this magisterial district have an average total workload that is fifteen percent <i>greater than or less than</i> any other magisterial district within your judicial district:	NO
D.	If YES, how does this difference impact workload equity within your judicial district?	
IV. PROPOSED CHANGE:		
A.	Please indicate any proposed change in this magisterial district. Check all that apply.	<input type="checkbox"/> Reestablish <input type="checkbox"/> Realign <input type="checkbox"/> Eliminate
B.	What is the proposed effective date (m/d/yyyy):	
V. MAGISTERIAL DISTRICT INFORMATION:		
A.	Magisterial District Judge Name: Vacant	
B.	Term Expiration (m/d/yyyy):	



MAGISTERIAL DISTRICT REESTABLISHMENT WORKSHEET

C. Mandatory Retirement Date (m/d/yyyy):	
D. Office Location (Street, City and Zip code):	121 South Pugh Street State College, PA 16801
E. Is the office within the boundaries of the magisterial district:	YES
F. Is the residence of the magisterial district judge within the boundaries of the magisterial district:	Choose Yes or No
G. List any police departments located within this magisterial district:	State College Police Department, Penn State University Police and PSP Rockview
H. List any major highways within this magisterial district:	Borough Streets
VI. LIST EXISTING MAGISTERIAL DISTRICT MUNICIPALITIES: Half Of State College Borough	
VII. LIST PROPOSED MAGISTERIAL DISTRICT MUNICIPALITIES: Same As Above--No Change	
VIII. ADDITIONAL COMMENTS: This district serves a relatively small geographic area which has a unique caseload generated largely by the student population of Penn State University. There are two Magisterial Districts located within the Borough with equitable caseload. This district has a current vacancy due to Magisterial District Judge being elected to Common Pleas Bench effective January 1, 2012. A Senior Magisterial Judge is currently assigned to this district.	
PLEASE SAVE A COPY OF THIS WORKSHEET PRIOR TO ENTERING DATA FOR THE NEXT MAGISTERIAL DISTRICT.	

**49TH JUDICIAL DISTRICT
MDJ REESTABLISHMENT PLAN
FEBRUARY 2012**

TABLE 1: Six-Year Average Caseload for six Centre County Magisterial Districts

49th Judicial District	CR	NT	PC	TR	CV	LT	MD	AVG Caseload
AVERAGE	449	995	116	4092	202	95	80	6029
MDJ 49-1-01	537	2227	11	3225	115	161	51	6327
MDJ 49-2-01	778	1250	79	5933	384	169	113	8706
MDJ 49-3-02	492	517	342	6233	372	64	75	8095
MDJ 49-3-03	196	474	146	5024	143	42	57	6082
MDJ 49-3-04	153	170	85	1584	123	35	72	2222
MDJ 49-3-05	538	1334	35	2552	73	102	112	4746

TABLE 2: Comparison of Six-Year Average Centre County Caseload

49th Judicial District	AVG Caseload	Variance
AVERAGE	6029	---
MDJ 49-1-01	6327	-5%
MDJ 49-2-01	8706	-44%
MDJ 49-3-02	8095	-34%
MDJ 49-3-03	6082	-1%
MDJ 49-3-04	2222	63%
MDJ 49-3-05	4746	21%

TABLE 3: Comparison of Individual Centre County Magisterial District Average Caseload to Average Caseload of 4th Class Counties

4th Class Counties	49th Judicial District											
	AVG Caseload	49-1-01 AVG	49-2-01 AVG	49-3-02 AVG	49-3-03 AVG	49-3-04 AVG	49-3-05 AVG	49-3-01	49-3-02	49-3-03	49-3-04	49-3-05
BEAVER	4,343	-46%	-1%	-86%	-40%	4900%	-9%					
BUTLER	4,894	-29%	-78%	-65%	-24%	55%	3%					
CAMBRIA	2,907	118%	199%	-178%	-109%	24%	-63%					
CUMBERLAND	6,479	-2%	-34%	-25%	-6%	66%	27%					
FAYETTE	3,394	-86%	-157%	-139%	-79%	35%	-40%					
SCHUYLKILL	4,184	-51%	-108%	-93%	-45%	47%	-13%					
WASHINGTON	4,655	-36%	-87%	-74%	-31%	52%	-2%					

TABLE 4: Comparison of Centre County Average Caseload

Centre County	AVG Caseload	Variance	# of MDJ's
Centre County	6,029		6
4th Class Counties	4,408	-37%	
BEAVER	4,343	1%	8
BUTLER	4,894	-11%	7
CAMBRIA	2,907	34%	11
CUMBERLAND	6,479	-47%	10
FAYETTE	3,394	23%	8
SCHUYLKILL	4,184	5%	7
WASHINGTON	4,655	-6%	11

CR=Criminal NT=Non Traffic PC=Private Complaint TR=Traffic CV=Civil LT=Landlord/Tenant MD=Miscellaneous

TABLE 5: District and MDJ Court Workload Averages (2005-2010)

49th Judicial District	CR	NT	PC	TR	CV	LT	MD	AVG Workload
AVERAGE	16,487	12,998	1,446	9,330	2,275	1,224	2,631	46,391
MDJ 49-1-01	19,719	23,918	1,300	7,553	1,297	1,376	1,814	56,777
MDJ 49-2-01	28,568	13,425	848	13,527	4,332	2,447	3,680	66,827
MDJ 49-3-02	18,066	19,403	3,673	14,211	4,196	927	2,443	62,919
MDJ 49-3-03	7,197	5,091	1,568	11,455	1,613	608	1,856	29,388
MDJ 49-3-04	5,618	1,826	913	3,612	1,387	507	2,345	16,208
MDJ 49-3-05	19,755	14,327	376	5,819	823	1,477	3,648	46,225

TABLE 6: Comparison of MDJ Courts to Judicial District Avg. Workloads (+/- 15%)

49th Judicial District	AVG Workload	Variance
AVERAGE	46,391	
MDJ 49-1-01	56,777	-22%
MDJ 49-2-01	66,827	-44%
MDJ 49-3-02	62,919	-36%
MDJ 49-3-03	29,388	37%
MDJ 49-3-04	16,208	65%
MDJ 49-3-05	46,225	0.03%

**49TH JUDICIAL DISTRICT
MDJ REESTABLISHMENT PLAN
FEBRUARY 2012**

MDJ Six-Year Average CRIMINAL WORKLOAD

49th Judicial District	2005	2006	2007	2008	2009	2010
MDJ 49-1-01	19,682	21,298	17,883	21,555	20,784	19,719
MDJ 49-2-01	22,326	19,058	21,151	23,537	25,263	28,568
MDJ 49-3-02	15,018	17,148	16,120	13,917	14,615	18,066
MDJ 49-3-03	9,510	9,033	8,813	8,997	6,867	7,197
MDJ 49-3-04	7,087	6,390	7,821	5,655	6,169	5,618
MDJ 49-3-05	16,047	25,080	22,987	22,730	21,004	19,755
GRAND TOTAL	89,670	98,007	94,775	96,391	94,702	98,923

MDJ Six-Year Average NONTRAFFIC WORKLOAD

49th Judicial District	2005	2006	2007	2008	2009	2010
MDJ 49-1-01	20,299	20,417	21,018	19,686	21,480	23,918
MDJ 49-2-01	14,445	11,041	12,780	13,393	12,555	13,425
MDJ 49-3-02	8,356	9,183	7,625	7,582	6,186	5,553
MDJ 49-3-03	7,357	6,347	4,973	4,532	4,693	5,091
MDJ 49-3-04	3,082	2,803	2,202	2,621	2,481	1,826
MDJ 49-3-05	16,647	17,614	18,086	17,120	15,766	14,327
GRAND TOTAL	70,186	67,405	66,684	64,934	63,161	64,140

MDJ Six-Year Average PRIVATE COMPLAINT WORKLOAD

49th Judicial District	2005	2006	2007	2008	2009	2010
MDJ 49-1-01	569	419	290	440	75	118
MDJ 49-2-01	4,028	1,095	698	226	269	848
MDJ 49-3-02	5,993	8,699	5,896	4,586	4,382	3,673
MDJ 49-3-03	902	591	2,266	1,343	1,332	1,568
MDJ 49-3-04	15,036	2,857	1,353	795	1,353	913
MDJ 49-3-05	1,224	1,117	1,063	440	526	376
GRAND TOTAL	27,752	14,778	11,566	7,830	7,937	7,496

MDJ Six-Year Average TRAFFIC WORKLOAD

49th Judicial District	2005	2006	2007	2008	2009	2010
MDJ 49-1-01	10,579	10,265	9,200	9,781	8,600	7,355
MDJ 49-2-01	12,132	10,073	13,511	13,495	13,801	13,531
MDJ 49-3-02	13,730	15,429	12,143	15,062	16,332	14,211
MDJ 49-3-03	9,277	7,759	7,451	10,872	12,353	11,455
MDJ 49-3-04	5,201	4,779	5,253	5,618	4,765	3,612
MDJ 49-3-05	9,521	9,530	9,090	11,658	8,320	5,819
GRAND TOTAL	60,440	57,835	56,648	66,486	64,171	55,983

MDJ Six-Year Average CIVIL WORKLOAD

49th Judicial District	2005	2006	2007	2008	2009	2010
MDJ 49-1-01	1,478	1,985	1,410	1,647	1,816	1,297
MDJ 49-2-01	4,715	5,978	4,941	5,347	4,715	4,332
MDJ 49-3-02	4,805	5,956	4,546	6,700	5,584	4,196
MDJ 49-3-03	1,771	1,918	2,369	2,121	1,963	1,613
MDJ 49-3-04	1,726	1,872	1,647	1,545	1,444	1,387
MDJ 49-3-05	733	1,139	1,173	1,241	1,117	823
GRAND TOTAL	15,228	18,848	16,086	18,601	16,639	13,648

MDJ Six-Year Average LANDLORD TENANT WORKLOAD

49th Judicial District	2005	2006	2007	2008	2009	2010
MDJ 49-1-01	1,998	1,955	2,867	2,997	2,577	2,331
MDJ 49-2-01	2,983	3,779	2,795	2,013	2,129	2,447
MDJ 49-3-02	1,158	1,245	1,173	1,477	1,115	927
MDJ 49-3-03	695	521	652	290	782	608
MDJ 49-3-04	521	594	681	521	565	507
MDJ 49-3-05	1,289	1,231	1,173	1,767	1,216	1,477
GRAND TOTAL	8,644	9,325	9,341	9,065	8,384	8,297

MDJ Six-Year Average MISCELLANEOUS DOCKET WORKLOAD

49th Judicial District	2005	2006	2007	2008	2009	2010
MDJ 49-1-01				2,150	1,433	1,238
MDJ 49-2-01				2,801	2,573	3,224
MDJ 49-3-02				2,736	1,531	1,856
MDJ 49-3-03				1,042	1,368	977
MDJ 49-3-04				1,987	1,987	1,661
MDJ 49-3-05				2,150	2,736	2,834
GRAND TOTAL				12,866	11,628	11,790

**49TH JUDICIAL DISTRICT
MDJ REESTABLISHMENT PLAN
FEBRUARY 2012**

MDJ Six-Year Average CRIMINAL FILINGS

49th Judicial District	2005	2006	2007	2008	2009	2010
MDJ 49-1-01	536	580	487	587	566	537
MDJ 49-2-01	608	519	578	641	688	778
MDJ 49-3-02	409	467	439	379	398	492
MDJ 49-3-03	259	246	240	245	187	196
MDJ 49-3-04	193	174	213	154	168	153
MDJ 49-3-05	437	683	626	619	572	538
GRAND TOTAL	2,442	2,669	2,581	2,625	2,579	2,694

MDJ Six-Year Average NONTRAFFIC FILINGS

49th Judicial District	2005	2006	2007	2008	2009	2010
MDJ 49-1-01	1,890	1,901	1,957	1,833	2,000	2,227
MDJ 49-2-01	1,345	1,028	1,188	1,247	1,169	1,250
MDJ 49-3-02	778	855	710	706	576	517
MDJ 49-3-03	685	591	465	422	437	474
MDJ 49-3-04	287	261	205	244	231	170
MDJ 49-3-05	1,550	1,640	1,684	1,594	1,468	1,334
GRAND TOTAL	6,535	6,276	6,209	6,046	5,881	5,972

MDJ Six-Year Average PRIVATE COMPLAINTS FILINGS

49th Judicial District	2005	2006	2007	2008	2009	2010
MDJ 49-1-01	53	39	27	41	7	11
MDJ 49-2-01	375	102	65	21	25	79
MDJ 49-3-02	558	810	549	427	408	342
MDJ 49-3-03	84	55	211	125	124	146
MDJ 49-3-04	1400	266	128	74	126	85
MDJ 49-3-05	114	104	99	41	49	35
GRAND TOTAL	2,584	1,376	1,077	729	739	698

MDJ Six-Year Average TRAFFIC FILINGS

49th Judicial District	2005	2006	2007	2008	2009	2010
MDJ 49-1-01	4,640	4,503	4,035	4,287	3,772	3,226
MDJ 49-2-01	5,321	4,418	5,926	5,919	6,053	5,935
MDJ 49-3-02	6,022	6,767	5,326	6,606	7,163	6,233
MDJ 49-3-03	4,059	3,402	3,268	4,768	5,418	5,024
MDJ 49-3-04	2,281	2,096	2,304	2,464	2,090	1,584
MDJ 49-3-05	4,176	4,180	3,987	5,113	3,649	2,552
GRAND TOTAL	26,509	25,366	24,846	29,157	28,145	24,554

MDJ Six-Year Average CIVIL FILINGS

49th Judicial District	2005	2006	2007	2008	2009	2010
MDJ 49-1-01	131	176	125	146	161	115
MDJ 49-2-01	418	530	438	474	418	384
MDJ 49-3-02	426	528	403	594	495	372
MDJ 49-3-03	157	170	210	188	174	143
MDJ 49-3-04	153	166	146	137	128	123
MDJ 49-3-05	65	101	104	110	99	73
GRAND TOTAL	1,350	1,671	1,426	1,649	1,475	1,210

MDJ Six-Year Average LANDLORD TENANT FILINGS

49th Judicial District	2005	2006	2007	2008	2009	2010
MDJ 49-1-01	138	135	198	207	178	161
MDJ 49-2-01	206	261	193	139	147	169
MDJ 49-3-02	80	86	81	102	77	64
MDJ 49-3-03	48	36	45	20	54	42
MDJ 49-3-04	36	41	47	36	39	35
MDJ 49-3-05	89	85	81	122	84	102
GRAND TOTAL	597	644	645	626	579	573

MDJ Six-Year Average MISCELLANEOUS DOCKET FILINGS

49th Judicial District	2005	2006	2007	2008	2009	2010
MDJ 49-1-01				66	44	38
MDJ 49-2-01				86	79	99
MDJ 49-3-02				84	47	57
MDJ 49-3-03				32	42	30
MDJ 49-3-04				61	61	51
MDJ 49-3-05				66	84	87
GRAND TOTAL				395	357	362

**58TH JUDICIAL DISTRICT
MDJ REESTABLISHMENT PLAN
FEBRUARY 2012**

MDJ Six-Year Average FILINGS & WORKLOADS per Docket

49th Judicial District	CR		NT		PC		TR		CV		LT		MD	
	Filings	Workload	Filings	Workload	Filings	Workload	Filings	Workload	Filings	Workload	Filings	Workload	Filings	Workload
AVERAGE	3,098	95,411	6,153	66,085	1,201	12,893	26,430	59,927	1,464	16,508	611	8,843	186	6,047
MDJ 49-1-01	3,293	120,921	11,808	126,818	178	1,911	24,463	55,780	854	9,633	1,017	14,725	148	4,821
MDJ 49-2-01	3,810	139,903	7,227	77,639	669	7,164	33,572	76,543	2,662	30,028	1,115	16,146	264	8,598
MDJ 49-3-02	2,584	94,884	4,142	44,485	3,094	33,229	38,117	86,907	2,818	31,787	490	7,095	188	6,123
MDJ 49-3-03	1,373	50,417	3,074	32,993	745	8,002	25,949	57,167	1,042	11,755	245	3,548	104	3,387
MDJ 49-3-04	4,055	38,740	1,398	15,015	2,077	22,307	12,819	29,228	853	9,621	234	3,389	173	5,635
MDJ 49-3-05	3,475	127,603	9,270	99,560	442	4,746	23,657	53,938	552	6,226	563	8,153	237	7,720

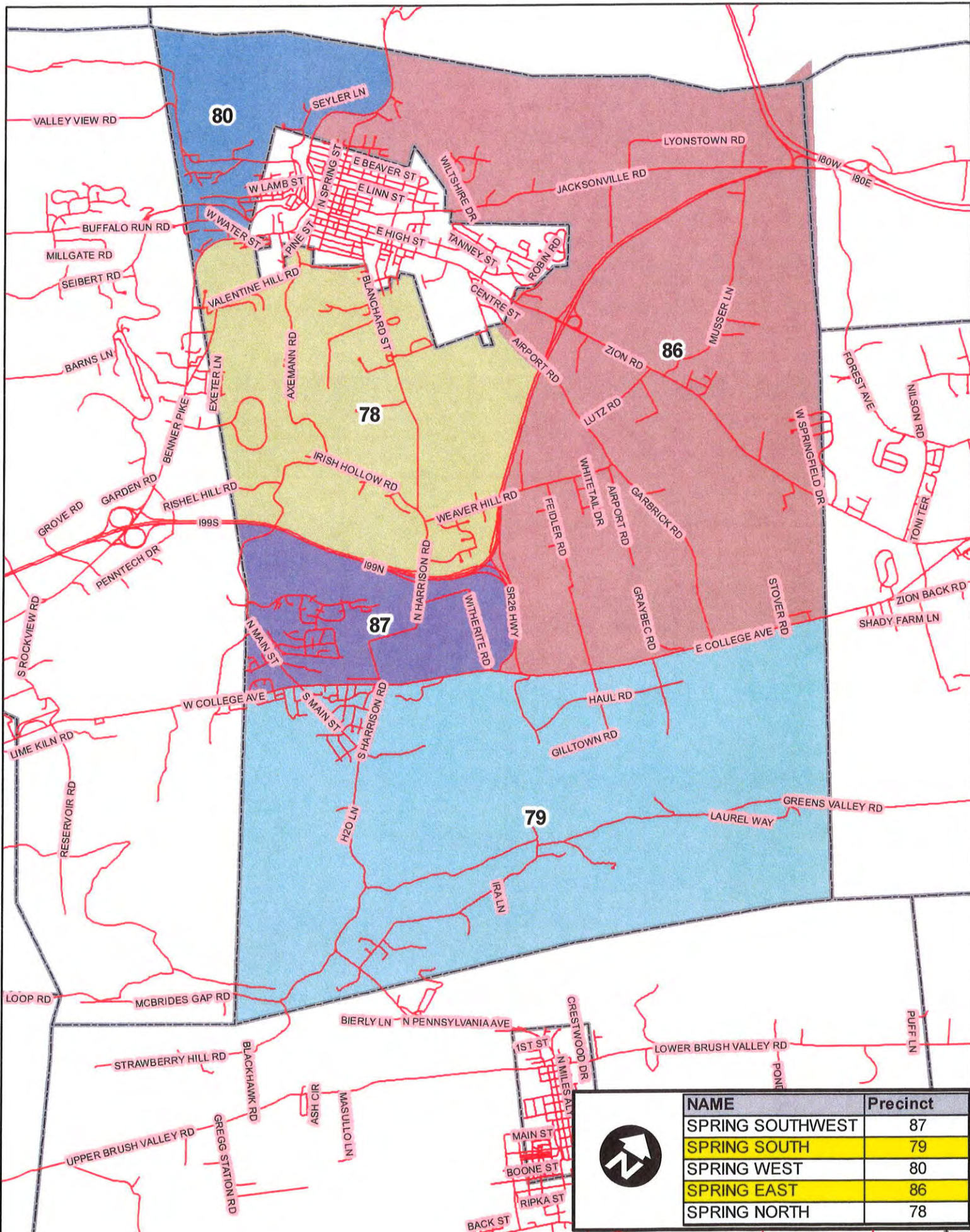
Centre County's Weighted Caseload

Docket Type	Case Weight
CR	36.72
NT (includes	10.74
TR	2.28
CV	11.28
LT	14.48
MD	32.57

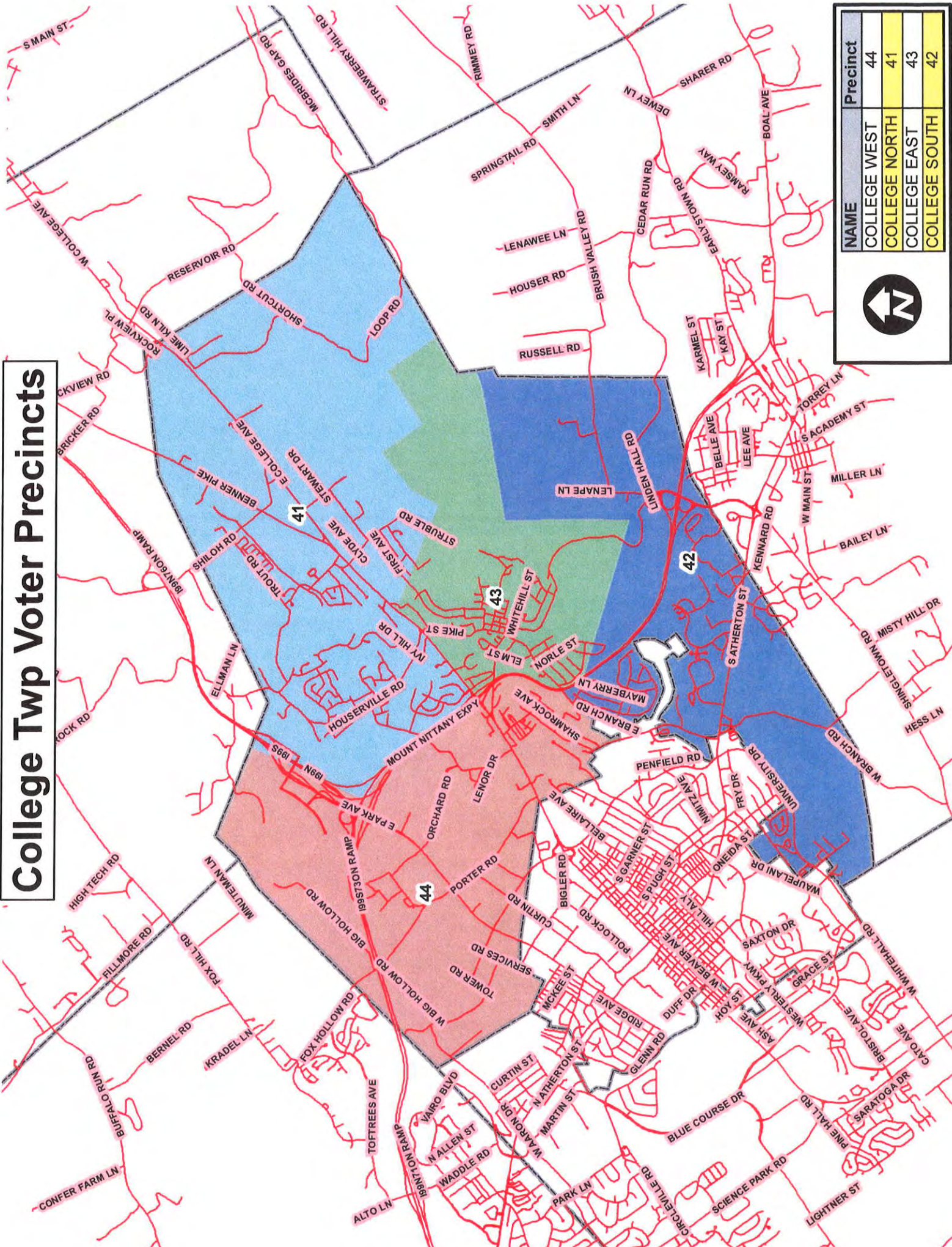
Projected Caseload for Centre County Magisterial Districts as the Result of Reestablishment

49th Judicial District	Projected Average Caseload	Variance
AVERAGE	6029	
MDJ 49-1-01	6,327	-5%
MDJ 49-2-01	6,906	-15%
MDJ 49-3-02	7,095	-18%
MDJ 49-3-03	6,082	-1%
MDJ 49-3-04	5,022	17%
MDJ 49-3-05	4,746	21%

Spring Twp Voter Precincts



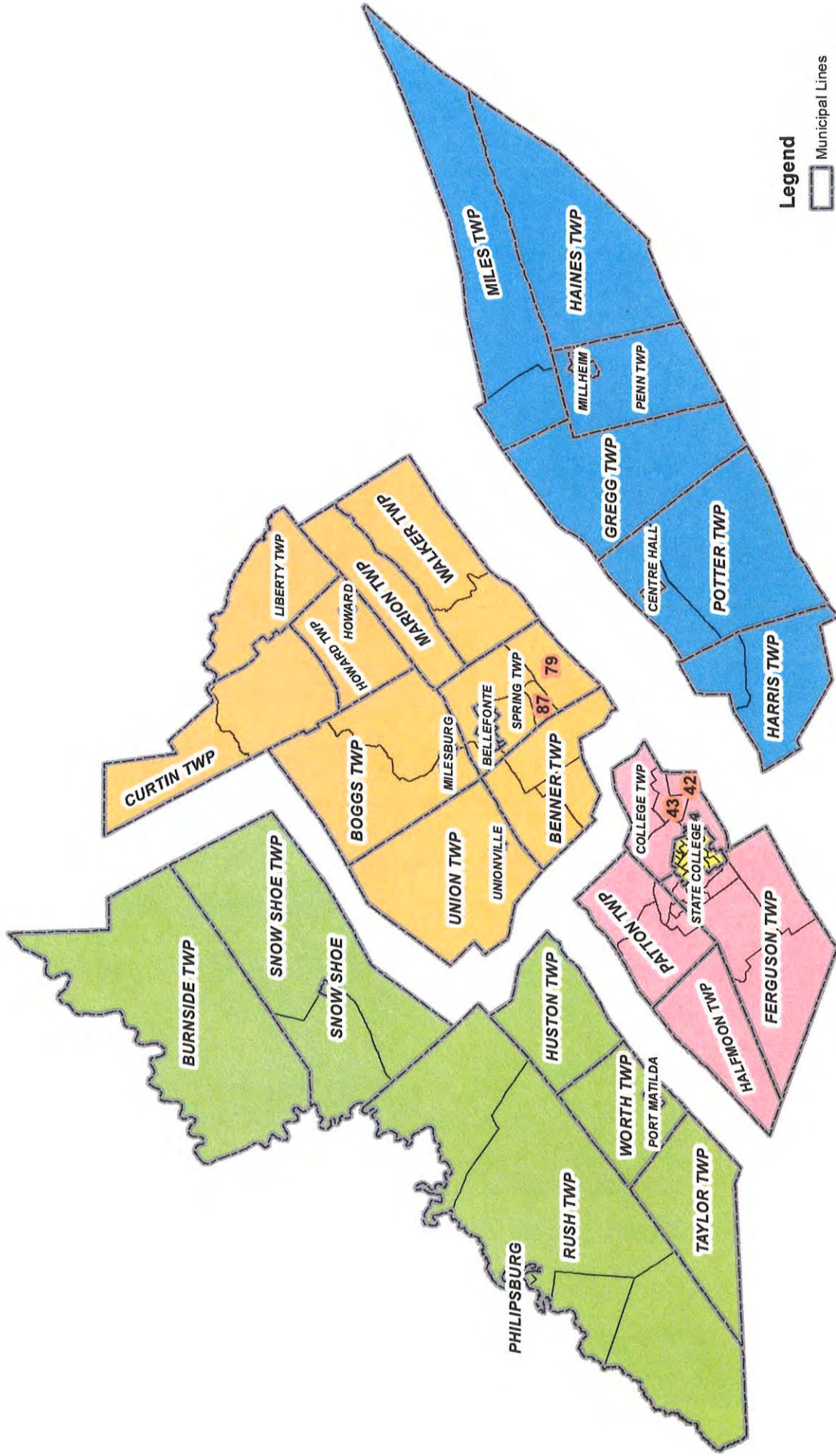
College Twp Voter Precincts



NAME	Precinct
COLLEGE WEST	44
COLLEGE NORTH	41
COLLEGE EAST	43
COLLEGE SOUTH	42



Current Magesterial Districts



Legend

Municipal Lines

Magesterial Districts

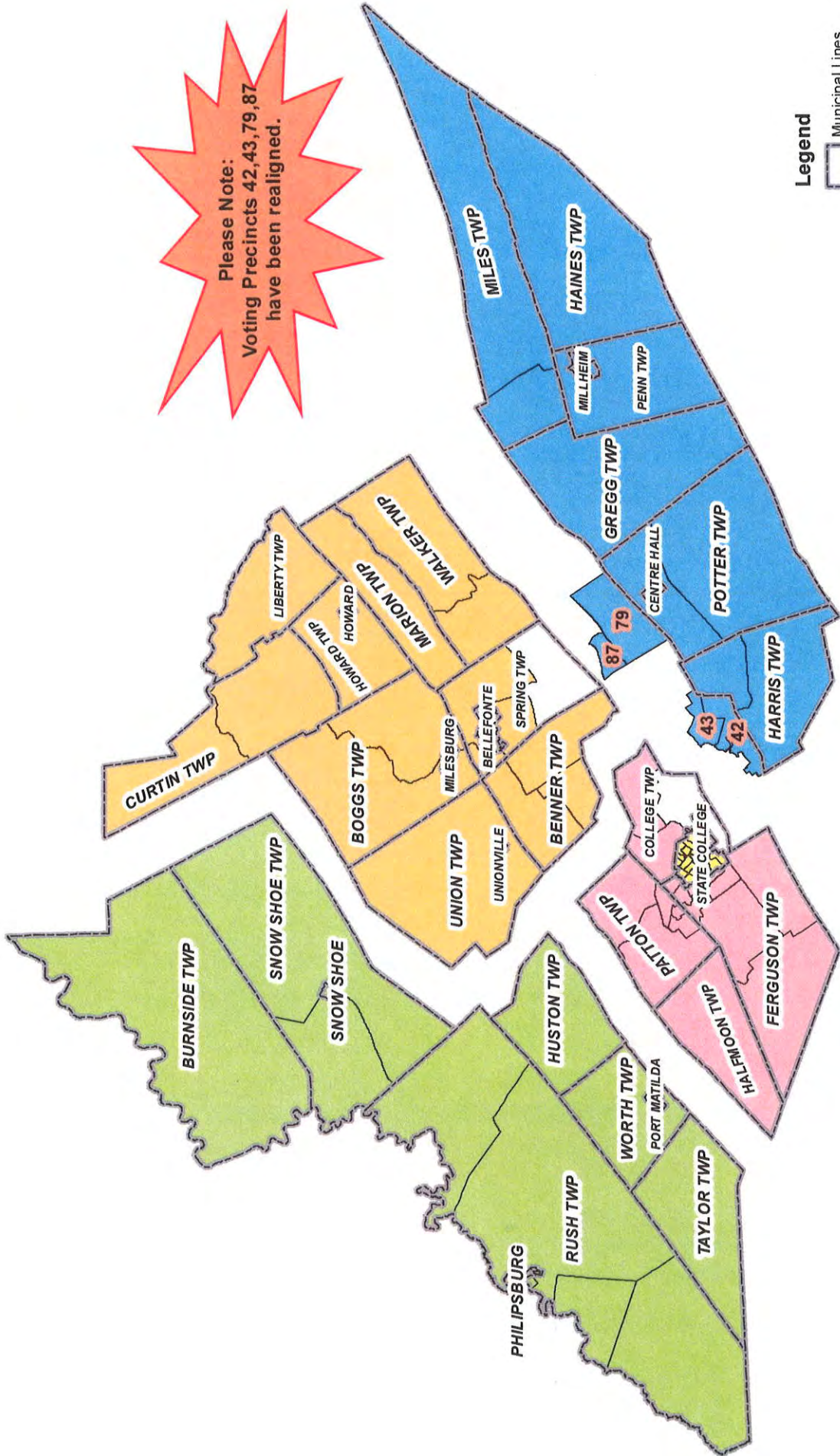
Precinct, NAME

- District 49-3-02
- District 49-3-04
- District 49-3-03
- Districts 49-1-01 & 49-3-05
- District 49-2-01



Proposed Magesterial Districts

Please Note:
 Voting Precincts 42, 43, 79, 87
 have been realigned.



Legend

- Municipal Lines
- Magesterial Districts**
- Precinct, NAME**
- District 49-3-02
- District 49-3-04
- District 49-3-03
- Districts 49-1-01 & 49-3-05
- District 49-2-01

