

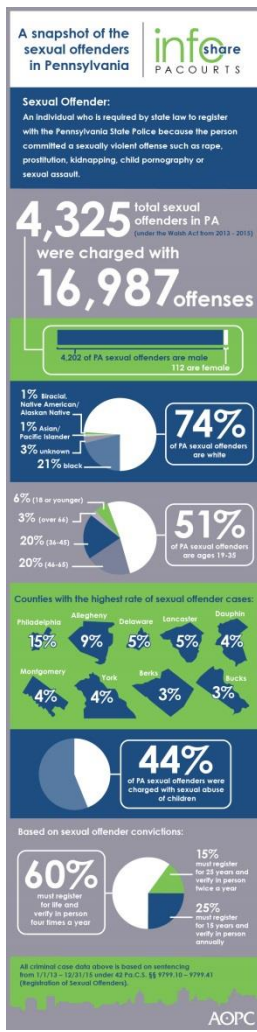
Infographic for Immediate Release

April 15, 2016

A snapshot of sexual offenders in Pennsylvania

HARRISBURG—Under Pennsylvania’s Adam Walsh Act, **4,325 people** were sentenced as sexual offenders between January 2013 – December 2015, and were charged with 16,987 offenses. Of those sexual offenders who were sentenced, 51% were between the ages of 19-35, and 44% were charged with sexual abuse of children.

The infographic below highlights key data and demographics about sexual offenders in Pennsylvania. [Download a high-resolution version](#) of the graphic.



PA Courts InfoShare is a bi-weekly product of the Administrative Office of Pennsylvania Courts (AOPC) that visually highlights the work of the courts with interesting data and statistics obtained through the judiciary's case management systems, interactive dashboards and other research. Reproduction is permissible with source cited.

Editor's Note:

County level detail below for total number of criminal cases sentenced from 1/1/2013 – 12/31/2015 for a Walsh Act Offense.

County	2013	2014	2015	Total	Percentage of Total
Adams	7	11	19	37	0.78%
Allegheny	106	164	177	447	9.40%
Armstrong	5	4	10	19	0.40%
Beaver	13	16	22	51	1.07%
Bedford	5	9	12	26	0.55%
Berks	54	46	64	164	3.45%
Blair	16	22	27	65	1.37%
Bradford	8	22	18	48	1.01%
Bucks	32	47	64	143	3.01%
Butler	9	18	17	44	0.93%
Cambria	11	24	12	47	0.99%
Cameron			2	2	0.04%
Carbon	4	15	8	27	0.57%
Centre	11	13	23	47	0.99%
Chester	29	31	48	108	2.27%
Clarion	6	5	4	15	0.32%
Clearfield	7	10	10	27	0.57%
Clinton	6	5	12	23	0.48%
Columbia	4	7	4	15	0.32%
Crawford	10	18	18	46	0.97%
Cumberland	21	30	36	87	1.83%
Dauphin	42	72	69	183	3.85%
Delaware	38	79	98	215	4.52%
Elk	2	4	5	11	0.23%
Erie	17	50	35	102	2.14%
Fayette	19	48	21	88	1.85%
Forest	2	1	2	5	0.11%
Franklin	19	25	35	79	1.66%
Fulton	2	2	8	12	0.25%
Greene		6	5	11	0.23%
Huntingdon	7	8	10	25	0.53%
Indiana	11	15	14	40	0.84%
Jefferson	7	10	9	26	0.55%

Juniata	3	3	4	10	0.21%
Lackawanna	9	21	35	65	1.37%
Lancaster	76	71	110	257	5.40%
Lawrence	9	11	11	31	0.65%
Lebanon	17	27	37	81	1.70%
Lehigh	17	18	28	63	1.32%
Luzerne	16	42	49	107	2.25%
Lycoming	12	12	15	39	0.82%
McKean	7	17	4	28	0.59%
Mercer	15	21	19	55	1.16%
Mifflin	5	7	5	17	0.36%
Monroe	21	33	31	85	1.79%
Montgomery	33	60	82	175	3.68%
Montour	1		3	4	0.08%
Northampton	15	24	25	64	1.35%
Northumberland	8	10	26	44	0.93%
Perry	5	11	5	21	0.44%
Philadelphia	187	264	256	707	14.87%
Pike	3	7	7	17	0.36%
Potter	4	9	6	19	0.40%
Schuylkill	10	12	27	49	1.03%
Snyder	3	4	3	10	0.21%
Somerset	5	12	11	28	0.59%
Susquehanna	2	10	5	17	0.36%
Tioga	4	6	5	15	0.32%
Union	1	5	5	11	0.23%
Venango	7	7	11	25	0.53%
Warren	10	14	15	39	0.82%
Washington	22	13	40	75	1.58%
Wayne	7	5	9	21	0.44%
Westmoreland	22	39	47	108	2.27%
Wyoming	2	4	3	9	0.19%
York	36	67	72	175	3.68%
Grand Total	1,124	1,703	1,929	4,756	100.00%



##

Media contact: Kimberly Bathgate, 717-231-3331