

Infographic for Immediate Release

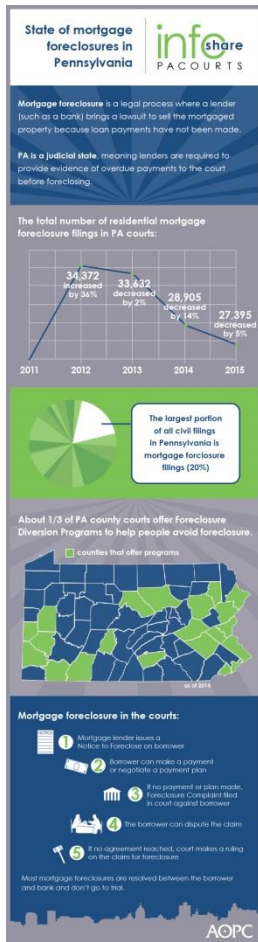
April 29, 2016

State of mortgage foreclosures in Pennsylvania

HARRISBURG—Residential mortgage foreclosure **filings** continue to decline in Pennsylvania with a 5 percent decrease during 2014-2015, and a 14 percent decrease the previous year.

In Pennsylvania, lenders are required to provide evidence of overdue payments to the court before foreclosing. Overall, mortgage foreclosure filings make up the **largest percentage of civil cases** filed (20 percent) in Pennsylvania courts.

The infographic below highlights some mortgage foreclosure trends in Pennsylvania and mortgage foreclosure in the courts. [Download a high-resolution version](#) of the graphic.



PA Courts InfoShare is a bi-weekly product of the Administrative Office of Pennsylvania Courts (AOPC) that visually highlights the work of the courts with interesting data and statistics obtained through the judiciary's case management systems, interactive dashboards and other research. Reproduction is permissible with source cited.



##

Media contact: [Kimberly Bathgate](#), 717-231-3331