

Infographic for Immediate Release

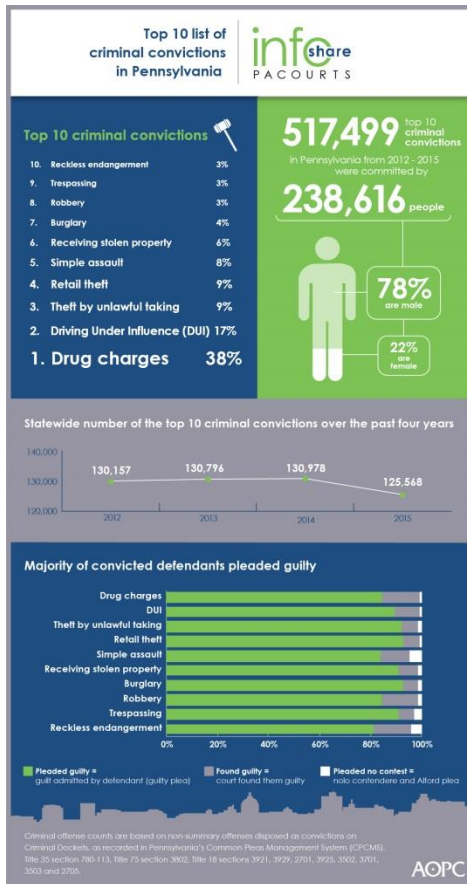
Oct. 7, 2016

Top 10 criminal convictions in Pennsylvania

HARRISBURG — According to data from the Administrative Office of Pennsylvania Courts, statewide criminal convictions are at a four-year low. When compared with criminal convictions from 2012 through 2015, **238,616** people were convicted of criminal offenses from the top 10 list of criminal convictions – with **drug charges** landing at number one. *(See end of release for county-by-county data).*

The infographic below highlights the top 10 criminal convictions in Pennsylvania and **shows the majority of defendants pleaded guilty to charges.** We encourage reporters to use the full graphic or parts of the graphic by [downloading a high-resolution version](#).

Criminal offense counts are based on non-summary offenses disposed as convictions on criminal dockets, as recorded in Pennsylvania’s Common Pleas Criminal Management System (CPCMS). Title 35 section 780-113, Title 75 section 3802, Title 18 sections 3921, 3929, 2701, 3925, 3502, 3701, 3503 and 2705.



PA Courts InfoShare is a bi-weekly product of the Administrative Office of Pennsylvania Courts (AOPC) that visually highlights the work of the courts with interesting data and statistics obtained through the judiciary's case management systems, interactive dashboards and other research. Reproduction is permissible with source cited.



##

Media contact: Kimberly Bathgate, 717-231-3331

Editor's note:

See below for county-by-county data.

Statewide number of the top 10 criminal offenses (not people) disposed with a conviction from 1/1/2012 through 12/31/2015 grouped by county

County	2012	2013	2014	2015	Total	Percentage of Total
Adams	596	589	713	676	2,574	0.50%
Allegheny	14,118	13,820	14,382	13,060	55,380	10.70%
Armstrong	375	336	321	407	1,439	0.28%
Beaver	1,088	1,063	1,160	1,228	4,539	0.88%
Bedford	253	297	277	394	1,221	0.24%
Berks	3,313	3,314	3,519	3,784	13,930	2.69%
Blair	1,421	1,573	1,670	1,859	6,523	1.26%
Bradford	323	357	323	407	1,410	0.27%
Bucks	9,908	10,132	8,817	8,866	37,723	7.29%
Butler	1,312	1,133	1,115	1,255	4,815	0.93%
Cambria	1,008	1,087	1,139	1,211	4,445	0.86%
Cameron	100	58	44	57	259	0.05%
Carbon	702	743	803	849	3,097	0.60%
Centre	968	1,022	1,399	1,170	4,559	0.88%
Chester	2,445	2,895	2,317	2,791	10,448	2.02%
Clarion	329	205	208	259	1,001	0.19%
Clearfield	1,248	959	873	550	3,630	0.70%
Clinton	181	253	249	340	1,023	0.20%
Columbia	438	435	518	482	1,873	0.36%
Crawford	427	543	550	561	2,081	0.40%
Cumberland	1,247	1,547	1,504	1,451	5,749	1.11%
Dauphin	4,472	5,480	5,814	5,344	21,110	4.08%

Delaware	6,497	6,415	5,924	5,771	24,607	4.75%
Elk	501	251	295	278	1,325	0.26%
Erie	1,409	1,534	1,567	1,392	5,902	1.14%
Fayette	2,603	2,980	2,948	2,486	11,017	2.13%
Forest	18	24	17	31	90	0.02%
Franklin	1,108	1,160	1,168	1,061	4,497	0.87%
Fulton	101	109	81	114	405	0.08%
Greene	472	541	943	1,562	3,518	0.68%
Huntingdon	373	313	320	305	1,311	0.25%
Indiana	677	592	542	487	2,298	0.44%
Jefferson	445	371	361	272	1,449	0.28%
Juniata	126	117	163	111	517	0.10%
Lackawanna	1,198	1,158	1,176	1,047	4,579	0.88%
Lancaster	5,503	5,304	4,978	4,635	20,420	3.95%
Lawrence	627	701	530	503	2,361	0.46%
Lebanon	2,281	2,282	2,449	2,921	9,933	1.92%
Lehigh	2,578	2,240	2,742	2,185	9,745	1.88%
Luzerne	2,628	2,731	3,140	2,974	11,473	2.22%
Lycoming	1,423	1,480	1,777	1,564	6,244	1.21%
McKean	431	433	563	374	1,801	0.35%
Mercer	578	722	598	563	2,461	0.48%
Mifflin	236	325	339	346	1,246	0.24%
Monroe	960	1,101	787	957	3,805	0.74%
Montgomery	5,257	5,590	5,373	5,556	21,776	4.21%
Montour	83	92	142	152	469	0.09%
Northampton	1,611	1,739	1,675	1,776	6,801	1.31%
Northumberland	554	669	524	655	2,402	0.46%
Perry	310	391	371	293	1,365	0.26%
Philadelphia	28,173	26,603	25,523	23,215	103,514	20.00%
Pike	307	354	437	378	1,476	0.29%
Potter	168	234	206	165	773	0.15%
Schuylkill	1,644	1,390	1,225	1,413	5,672	1.10%
Snyder	237	181	202	250	870	0.17%
Somerset	461	357	505	461	1,784	0.34%
Sullivan	49	31	22	22	124	0.02%
Susquehanna	276	206	205	167	854	0.17%
Tioga	148	144	127	150	569	0.11%
Union	177	207	226	200	810	0.16%
Venango	378	335	346	356	1,415	0.27%
Warren	269	224	185	264	942	0.18%
Washington	1,393	1,504	1,639	1,776	6,312	1.22%
Wayne	211	263	238	149	861	0.17%

Westmoreland	4,163	4,268	4,985	4,440	17,856	3.45%
Wyoming	163	172	201	223	759	0.15%
York	5,080	5,117	5,498	4,567	20,262	3.92%
Total	130,157	130,796	130,978	125,568	517,499	N/A