

## Infographic for Immediate Release

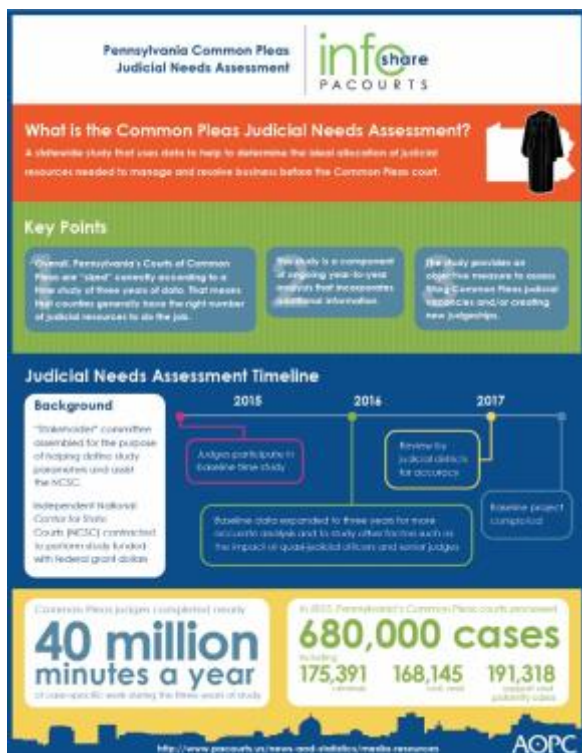
Nov. 29, 2017

# Pennsylvania Common Pleas Judicial Needs Assessment

**HARRISBURG** — Pennsylvania’s judiciary today released the results of a statewide judicial needs assessment study that uses data to help to determine the ideal allocation of judicial resources in Common Pleas Courts to manage and resolve court business timely and effectively for the public.

The study shows that overall the Courts of Common Pleas are “sized” correctly with the right number of judicial resources needed to process and resolve current caseloads before the bench in each judicial district. The judicial needs assessment is not the only factor in determining how many Common Pleas judges are needed. Rather, it is a snapshot of data that begins analysis and discussion for decision-makers to determine judicial resources necessary to meet the needs of traditional and specialized caseloads.

Going forward, the study will serve as a component of ongoing year-to-year measurement and analysis. The infographic below highlights key points about the judicial needs assessment and other relevant data. [Download a high-resolution version](#) of the graphic or view the [judicial needs assessment report](#).



*PA Courts InfoShare is a monthly product of the Administrative Office of Pennsylvania Courts (AOPC) that visually highlights the work of the courts with interesting data and statistics obtained through the judiciary's case management systems, interactive dashboards and other research. Reproduction is permissible with source cited.*



##

**Media contact:** [Stacey Witalec](#), 717-877-2997