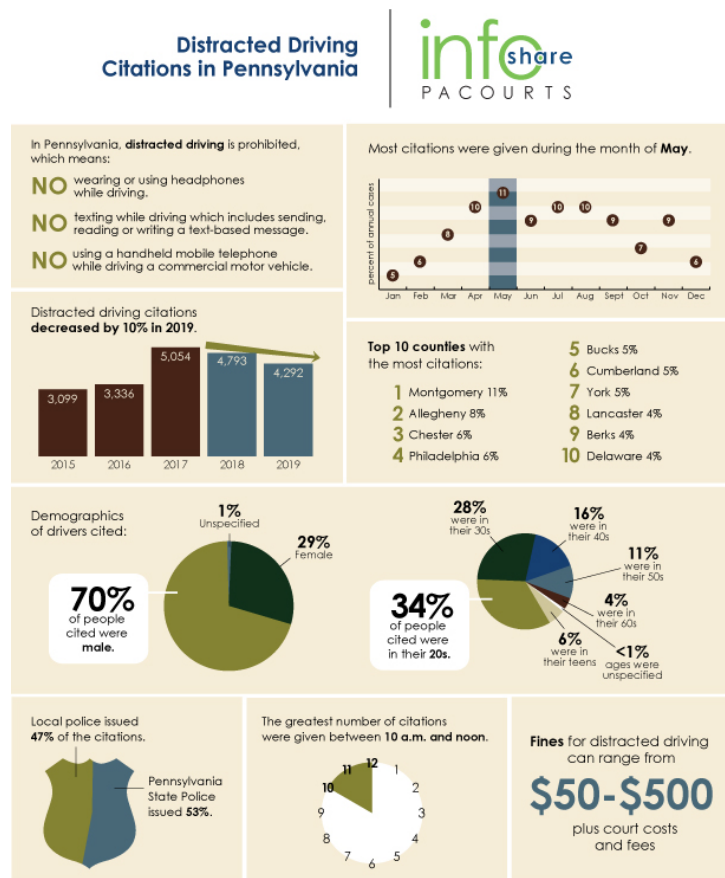


Infographic for Immediate Release
April 20, 2020

Distracted driving citations in Pennsylvania

HARRISBURG – Pennsylvania distracted driving citations **decreased by 10 percent** statewide from 2018 to 2019. Distracted driving citations in Pennsylvania can be issued for 1) using headphones while driving, 2) using a handheld mobile phone while driving a commercial vehicle or 3) texting while driving. Texting includes sending, reading or writing a text-based message.

The infographic below highlights key data and demographics about distracted drivers in Pennsylvania over the last five years. A high-resolution file of the graphic is available for download at www.pacourts.us under [Media Resources](#).



Data pulled from PA Courts case management systems and Philadelphia Municipal Court traffic division eTMS system. Data provided represents percentages over five years from 1/1/2015 – 12/31/2019 (unless noted) based on the following state law: Title 75, sections 1621, 1622, 3314, 3316.

PA Courts InfoShare is a monthly product of the Administrative Office of Pennsylvania Courts (AOPC) that visually highlights the work of the courts with interesting data and statistics obtained through the judiciary's case management systems, interactive dashboards and other research. Reproduction is permissible with source cited.

##

Media contact: Kimberly Bathgate, 717-231-3331

Editor's Note:

Statewide Count of distracted driving offenses filed from 1/1/2015 through 12/31/2019; Grouped by County

County	2015	2016	2017	2018	2019	Total	Percentage of Total
Adams	26	26	45	57	55	209	1.02%
Allegheny	235	316	383	384	273	1,591	7.73%
Armstrong	11	7	13	9	17	57	0.28%
Beaver	22	12	38	32	22	126	0.61%
Bedford	24	26	28	41	24	143	0.70%
Berks	132	117	198	189	199	835	4.06%
Blair	18	34	18	22	25	117	0.57%
Bradford	10	12	11	6	10	49	0.24%
Bucks	183	152	294	217	139	985	4.79%
Butler	43	45	51	46	50	235	1.14%
Cambria	17	17	15	18	34	101	0.49%
Cameron	0	3	2	4	1	10	0.05%
Carbon	16	19	30	28	30	123	0.60%
Centre	55	29	39	42	17	182	0.88%
Chester	166	208	339	272	216	1,201	5.84%
Clarion	17	15	42	27	23	124	0.60%
Clearfield	18	16	17	16	10	77	0.37%
Clinton	10	12	31	13	31	97	0.47%
Columbia	19	36	59	89	51	254	1.23%
Crawford	18	21	22	20	22	103	0.50%
Cumberland	119	179	220	189	261	968	4.70%
Dauphin	68	70	86	127	155	506	2.46%
Delaware	116	127	208	157	177	785	3.82%
Elk	1	2	11	53	16	83	0.40%
Erie	30	32	74	56	43	235	1.14%
Fayette	17	13	34	33	27	124	0.60%
Forest	0	1	4	4	5	14	0.07%
Franklin	30	46	72	57	71	276	1.34%
Fulton	10	7	10	15	11	53	0.26%

Greene	8	8	11	12	8	47	0.23%
Huntingdon	5	12	13	8	3	41	0.20%
Indiana	10	22	23	24	18	97	0.47%
Jefferson	3	8	42	17	27	97	0.47%
Juniata	14	9	7	15	16	61	0.30%
Lackawanna	115	86	121	102	99	523	2.54%
Lancaster	122	116	244	214	174	870	4.23%
Lawrence	16	12	42	30	19	119	0.58%
Lebanon	22	28	49	105	93	297	1.44%
Lehigh	73	93	220	163	201	750	3.65%
Luzerne	57	53	84	107	122	423	2.06%
Lycoming	18	18	27	33	40	136	0.66%
McKean	2	2	6	14	12	36	0.17%
Mercer	15	17	33	45	39	149	0.72%
Mifflin	4	8	7	4	4	27	0.13%
Monroe	42	63	45	60	77	287	1.39%
Montgomery	298	379	620	577	443	2,317	11.26%
Montour	8	1	5	3	8	25	0.12%
Northampton	71	78	219	149	110	627	3.05%
Northumberland	17	21	23	23	16	100	0.49%
Perry	8	4	17	22	12	63	0.31%
Philadelphia	242	216	216	255	211	1,140	5.54%
Pike	8	16	23	11	18	76	0.37%
Potter	7	17	28	22	9	83	0.40%
Schuylkill	16	22	31	34	41	144	0.70%
Snyder	30	19	30	25	26	130	0.63%
Somerset	12	6	28	42	29	117	0.57%
Sullivan	2	4	3	0	1	10	0.05%
Susquehanna	10	15	37	40	21	123	0.60%
Tioga	7	6	11	11	15	50	0.24%
Union	10	8	6	12	13	49	0.24%
Venango	21	7	21	27	45	121	0.59%
Warren	10	8	5	7	2	32	0.16%
Washington	59	58	79	83	62	341	1.66%
Wayne	3	7	9	7	7	33	0.16%
Westmoreland	75	71	74	81	78	379	1.84%
Wyoming	5	6	10	16	16	53	0.26%
York	223	212	191	170	142	938	4.56%
Grand Total	3,099	3,336	5,054	4,793	4,292	20,574	N/A