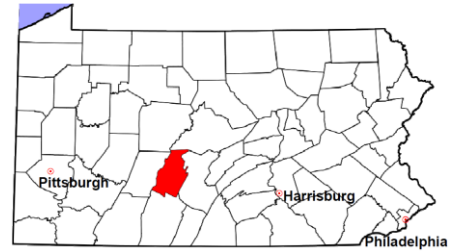


Blair County

2011 Population Estimate: 127,099
 Class of County: 5th
 No. of Common Pleas Court Judgeships: 5



2011 Criminal	No. of Cases
---------------	--------------

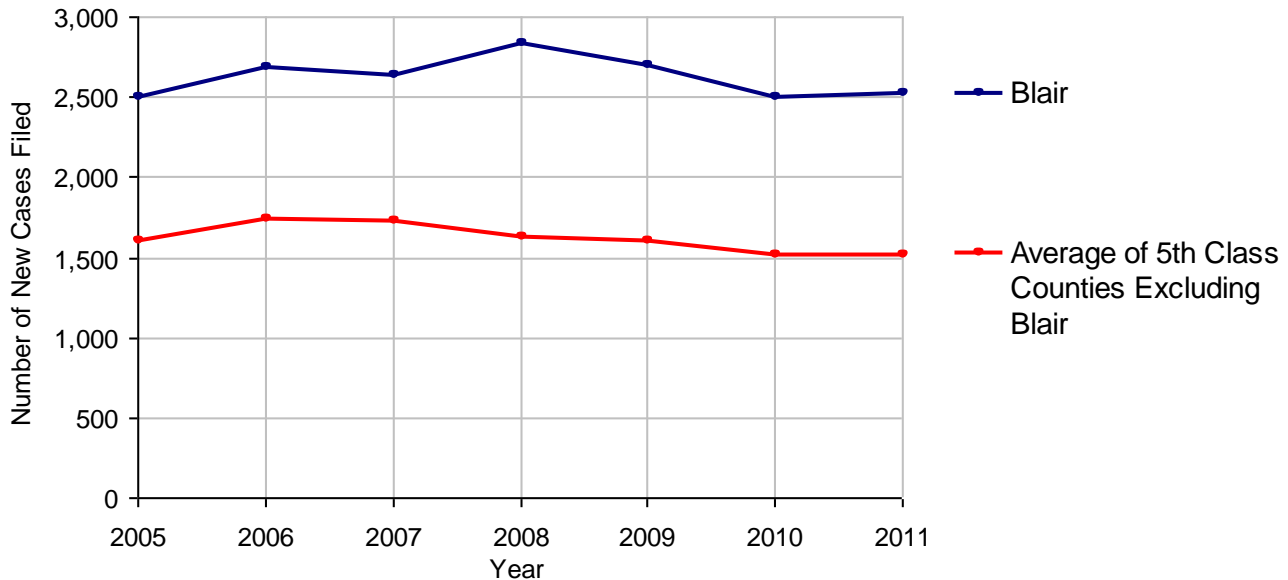
Cases Pending 1/1/2011	1,104
New Cases Filed in 2011	2,520
Reopened Cases	143
Cases Available for Disposition	3,767
Disposed by:	
Withdrawn/Dismissed	111 4.0%
ARD	465 16.9%
Guilty Plea	2,011 73.0%
Non-Jury Trial	11 0.4%
Jury Trial	32 1.2%
Inactive	54 2.0%
Other	69 2.5%
Total Cases Disposed	2,753 100.0%
Cases Pending 12/31/2011	1,014
Cases Awaiting Sentencing	82



Age of Pending Cases as of 12/31/2011		
0-60 Days	392	38.7%
61-120 Days	188	18.5%
121-180 Days	124	12.2%
181-240 Days	73	7.2%
241-300 Days	43	4.2%
301-360 Days	19	1.9%
Over 360 Days	175	17.3%
Total	1,014	100.0%

Data provided by CPCMS

Criminal New Cases Filed, 2005-2011

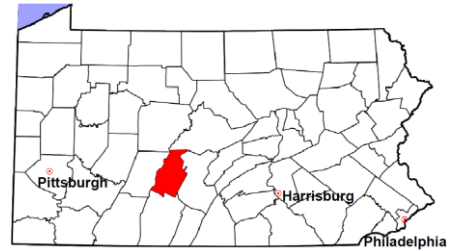


Blair County

2011 Population Estimate: 127,099

Class of County: 5th

No. of Common Pleas Court Judgeships: 5



2011 Criminal - New Cases by Case Type

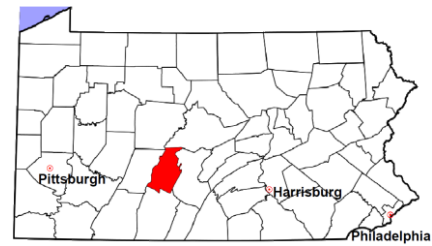


Case Type	Felony	Misdemeanor	Summary /Ungraded	Total
Person	144	267	0	411
Property	332	418	13	763
Drug	149	199	0	348
Weapon	19	8	0	27
Public Order	234	202	4	440
Motor Vehicle - DWI/DUI	0	516	0	516
Motor Vehicle - Other	0	10	2	12
Other	3	0	0	3
Total	881	1,620	19	2,520
	35.0%	64.3%	0.8%	100.0%

Data provided by CPCMS

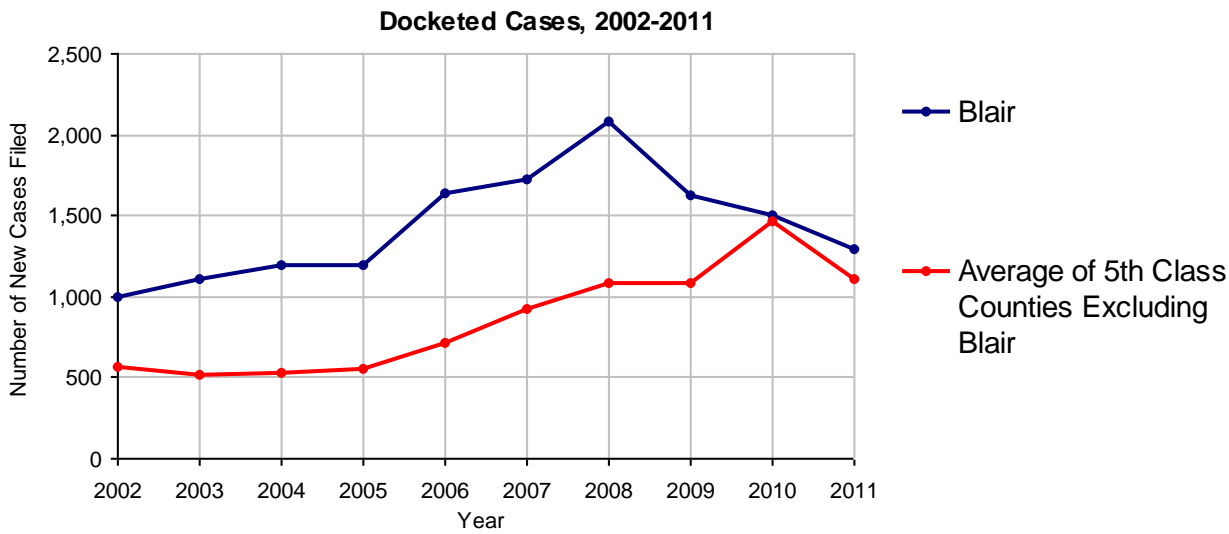
Blair County

2011 Population Estimate: 127,099
 Class of County: 5th
 No. of Common Pleas Court Judgeships: 5



2011 Civil	Civil Action	Other	Total
Cases Pending 1/1/2011	788	348	1,136
Docketed Cases	931	367	1,298
Arbitration Appeals	0	1	1
Transferred In	1	0	1
Returned to Active	0	0	0
Cases Available for Processing	1,720	716	2,436
Disposed By:			
Default Judgments	364	159	523
Cases Decided by Arbitration Board	6	8	14
Dispositive Motions	86	38	124
Settlements	419	182	601
Moved to Inactive Status	47	15	62
Transferred/Withdrawn	39	16	55
Pa.R.J.A. 1901 Administrative Purge	0	0	0
Other	103	89	192
Jury Trial	7	2	9
Non-Jury Trial	15	2	17
Total Cases Disposed	1,086	511	1,597
Cases Pending 12/31/2011	634	205	839

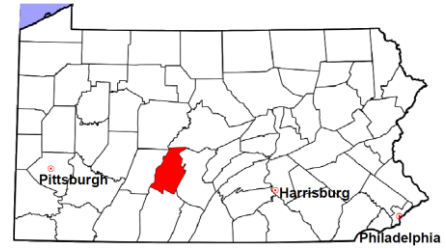
Age of Pending Cases as of 12/31/2011 (Civil Action Only)		
0-6 months	441	69.6%
7-12 months	140	22.1%
13-18 months	36	5.7%
19-24 months	17	2.7%
25-30 months	0	
31-36 months	0	
37-42 months	0	
43-48 months	0	
49-54 months	0	
55-60 months	0	
61-66 months	0	
67-72 months	0	
Over 72 months	0	
Total	634	100.0%



Note: Prior to June 2010, docketed cases under the "Other" category were not reported. The reporting of these cases starting from June 2010 may contribute to an increase in docketed cases from 2009 to 2010.

Blair County

2011 Population Estimate: 127,099
 Class of County: 5th
 No. of Common Pleas Court Judgeships: 5



2011 Civil - Docketed Cases Listed by Case Type

TORT (does not include mass tort)

Intentional	3
Malicious Prosecution	0
Motor Vehicle	62
Nuisance	4
Premise Liability	13
Product Liability	1
Slander/Libel/Defamation	3
Other	44

MASS TORT

Asbestos	0
Tobacco	0
Toxic Tort - DES	0
Toxic Tort - Implant	0
Toxic Waste	0
Other	3

PROFESSIONAL LIABILITY

Dental	0
Legal	2
Medical Malpractice	20
Other	14

CONTRACT

(does not include judgments)

Buyer Plaintiff	3
Debt Collection:	
Credit Card	551
Other	132
Employment Dispute:	
Discrimination	2
Other	2
Other	67

REAL PROPERTY

Ejectment*	25
Eminent Domain/ Condemnation*	0
Ground Rent	0
Landlord/Tenant Dispute	5
Mortgage Forclosures:	
Residential*	202
Commercial*	2
Partition of Real Property*	4
Quiet Title*	16
Other*	2

CIVIL APPEALS

Administrative Agencies

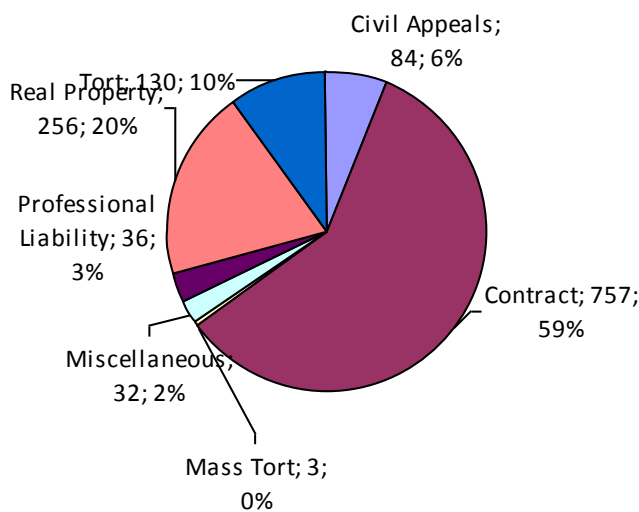
Board of Assessment*	12
Board of Elections*	0
Dept. of Transportation*	0
Zoning Board*	2
Statutory Appeal - Other*	0
Other*	70

MISCELLANEOUS

Common Law/ Statutory Arbitration*	1
Declaratory Judgment*	3
Mandamus*	3
Non-Domestic Relations Restraining Order*	1
Quo Warranto*	0
Replevin*	8
Other*	16

TOTAL DOCKETED CASES: 1,298

* Civil Other



Of the Docketed Cases:

Pro Se Filings:	0
Class Action Suits:	0
MDJ Appeals:	68 5.2%

Blair County

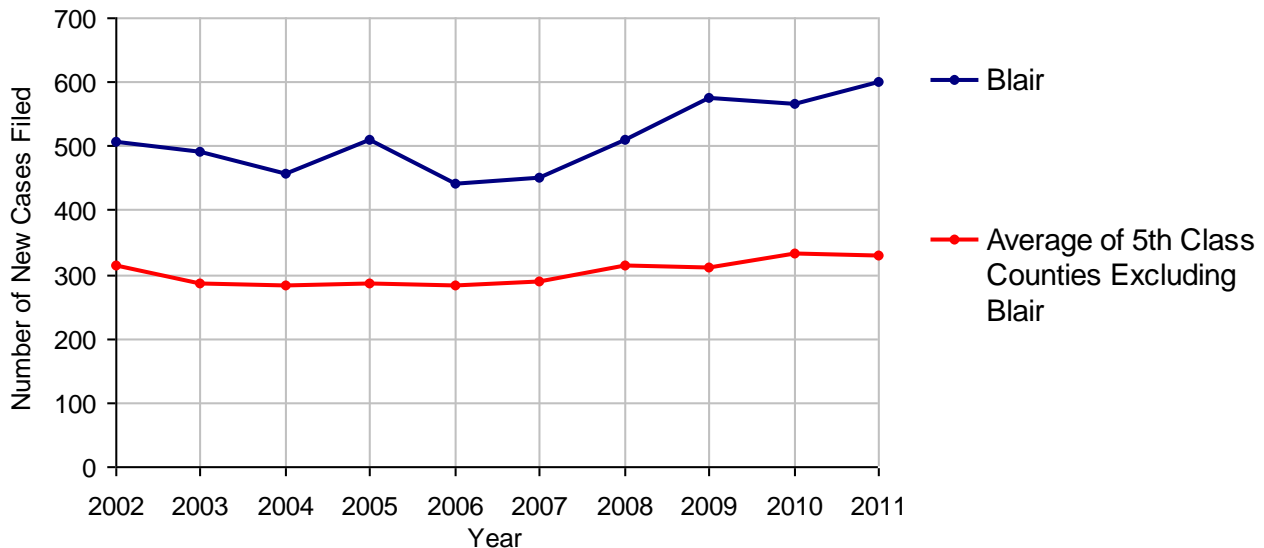
2011 Population Estimate: 127,099
 Class of County: 5th
 No. of Common Pleas Court Judgeships: 5



2011 Protection From Abuse

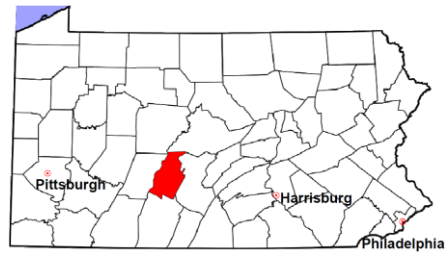
	No. of Petitions
Cases Pending 1/1/2011	52
New Cases Filed in 2011	600
<i>Of these, Petitions Requesting Temporary Orders: 600 (100.0%)</i>	
<i>Temporary Orders DENIED: 49 (8.2%), Temporary Orders GRANTED: 551 (91.8%)</i>	
Cases Available for Processing	652
Processed By:	
Temporary Order DENIED After Ex Parte Hearing and No Evidentiary Hearing Scheduled	0
Temporary Order DISMISSED After Evidentiary Hearing and No Final Order Entered	125 21.0%
Final Order DENIED After Evidentiary Hearing Before a Judge	0
Final Order GRANTED After Evidentiary Hearing Before a Judge	97 16.3%
Plaintiff Did Not Appear For Evidentiary Hearing	0
Final Order by STIPULATION OR AGREEMENT Between the Parties	197 33.1%
Petition WITHDRAWN by Plaintiff	161 27.0%
TRANSFERRED to Another Jurisdiction	0
DECEASED Party	1 0.2%
Other	15 2.5%
Cases Processed	596 100.0%
Cases Pending 12/31/2011	56

PFA New Cases Filed, 2002-2011

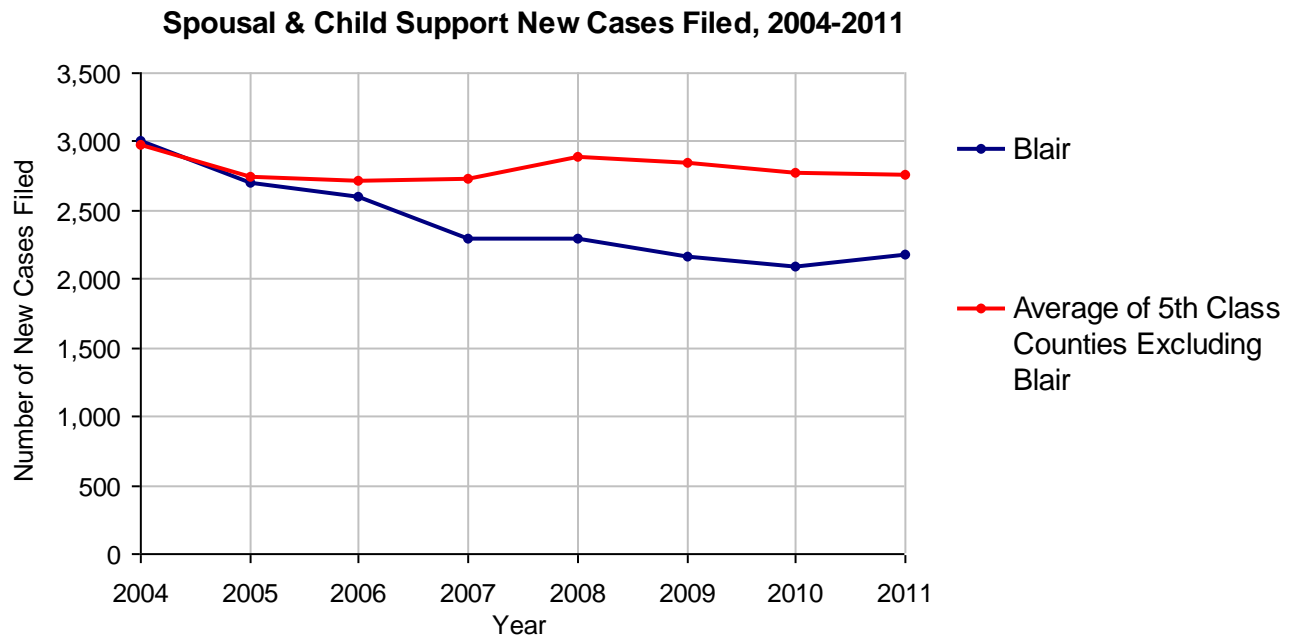


Blair County

2011 Population Estimate: 127,099
 Class of County: 5th
 No. of Common Pleas Court Judgeships: 5



2011 Spousal & Child Support	No. of Petitions	
Cases Pending 1/1/2011	532	
New Cases Filed in 2011	2,176	
Dockets Transferred In (+)	18	
Dockets Transferred Out (-)	19	
Cases Available for Processing	2,707	
Processed By:		
Judge	183	8.7%
Intake Officer	1,915	91.2%
Hearing Officer	0	
Other	1	<0.1%
Cases Processed	2,099	100.0%
Cases Pending 12/31/2011	608	

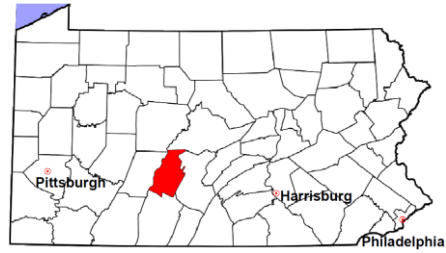


Blair County

2011 Population Estimate: 127,099

Class of County: 5th

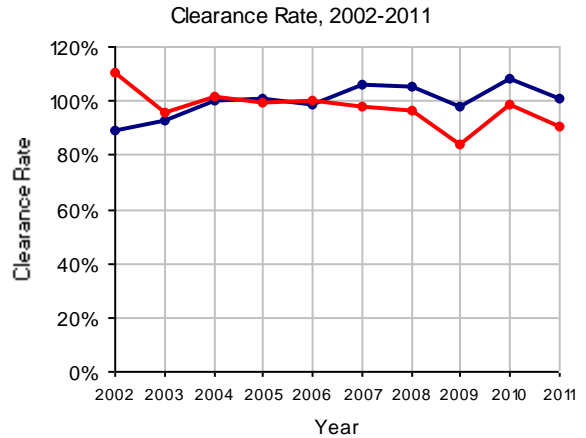
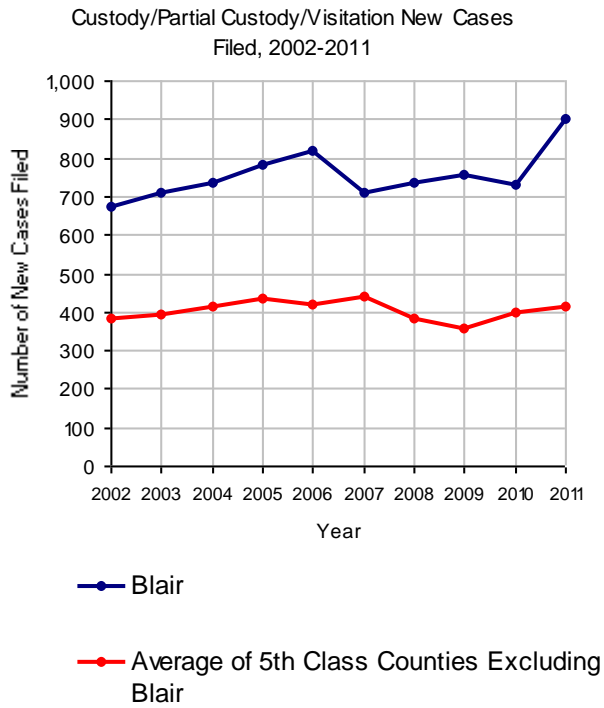
No. of Common Pleas Court Judgeships: 5



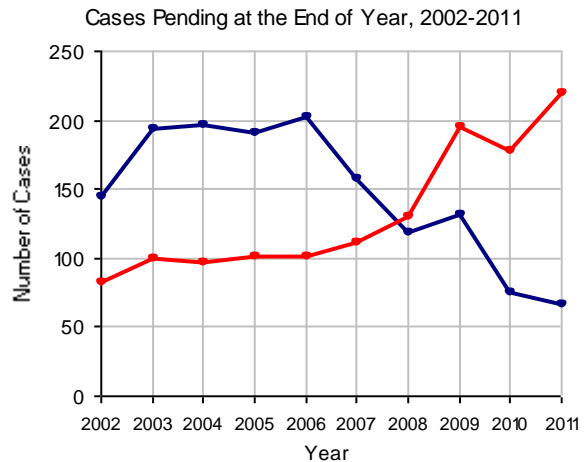
2011 Custody/Partial Custody/Visitation

No. of Petitions

Cases Pending 1/1/2011	75
New Cases Filed in 2011	904
Cases Available for Processing	979
Processed By:	
Judge	116 12.7%
Non-Judicial Officer	645 70.6%
Other	152 16.6%
Cases Processed	913 100.0%
Cases Pending 12/31/2011	66

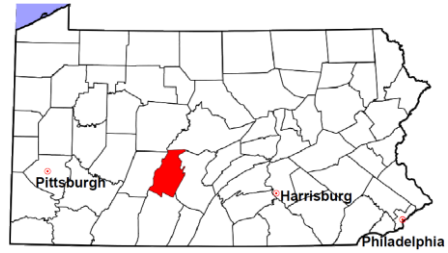


Note: Clearance Rate = Cases Processed / New Cases Filed



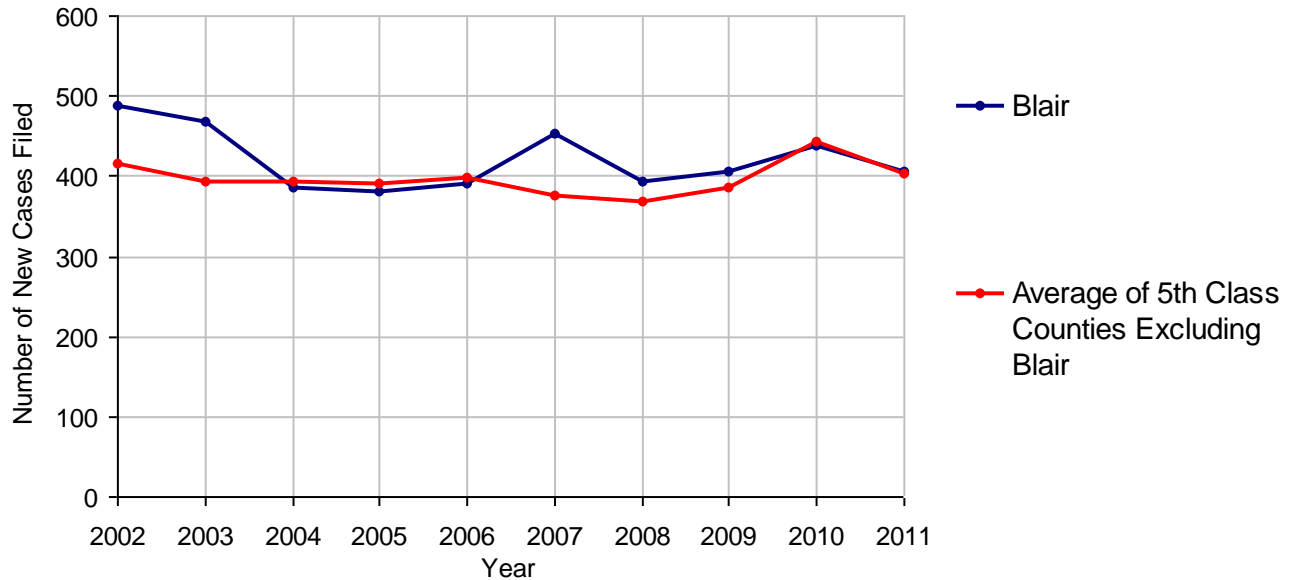
Blair County

2011 Population Estimate: 127,099
 Class of County: 5th
 No. of Common Pleas Court Judgeships: 5



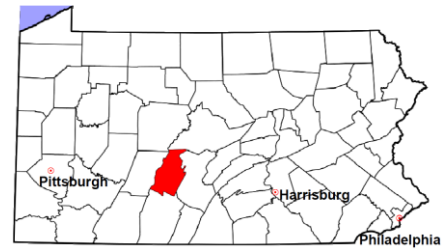
2011 Divorce	No. of Petitions	
Cases Pending 1/1/2011	973	
New Cases Filed in 2011	405	
Cases Available for Processing	1,378	
Processed By:		
Contested Before a Judge	9	2.2%
Contested Before a Master	21	5.1%
Uncontested	335	80.7%
Other	50	12.0%
Cases Processed	415	100.0%
Cases Pending 12/31/2011	963	

Divorce New Cases Filed, 2002-2011



Blair County

2011 Population Estimate: 127,099
 Class of County: 5th
 No. of Common Pleas Court Judgeships: 5



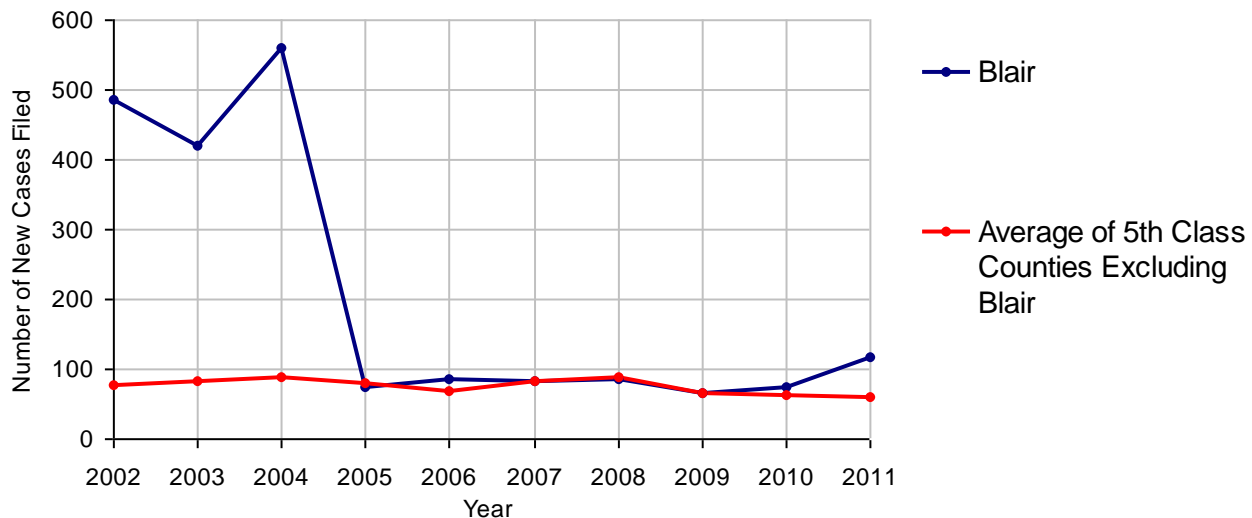
2011 Juvenile Dependency - Active Dependent Inventory



	Abuse/ Neglect	Status Offenses	Total
Cases Pending 1/1/2011	16	0	16
New Petitions Filed in 2011	116	0	116
Other	2	0	2
Total Petitions Available for Processing	134	0	134
Processed by:			
Adjudicated Dependent			
Judge	38	0	38
Master	60	0	60
Adjudicated NOT Dependent			
Judge	4	0	4
Master	2	0	2
Withdrawn/Dismissed/Inactive	6	0	6
Other	2	0	2
Total Petitions Processed	112	0	112
Cases Pending 12/31/2011	22	0	22

Data provided by CPCMS

Abuse/Neglect and Status Offenses New Cases Filed, 2002-2011



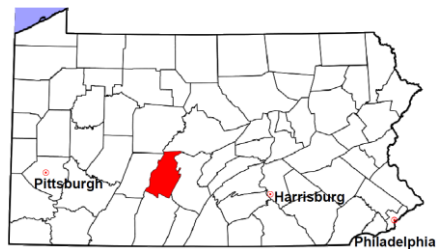
Note: (1) Dependency data for 2002-2010 were collected manually. Dependency data for 2011 were provided by CPCMS. (2) A sharp increase or decrease may reflect changes in practice or counting methods.

Blair County

2011 Population Estimate: 127,099

Class of County: 5th

No. of Common Pleas Court Judgeships: 5



2011 Juvenile Dependency - Adjudicated Dependent Inventory



	Abuse/ Neglect	Status Offenses	Total	
Cases Pending 1/1/2011	100	0	100	
New Adjudicated Dependent Cases	98	0	98	
Other	8	0	8	
Total Adjudicated Dependent Cases	206	0	206	
<u>Court Supervision Terminated:</u>				
Family Reunification	14	0	14	28.6%
Adoption	14	0	14	28.6%
Placement with a Relative/Guardian	11	0	11	22.4%
Aged Out	5	0	5	10.2%
Other Permanency Outcomes*	5	0	5	10.2%
Other**	0	0	0	
Total Adjudicated Dependent Cases Terminated	49	0	49	100.0%
Cases Pending 12/31/2011	157	0	157	

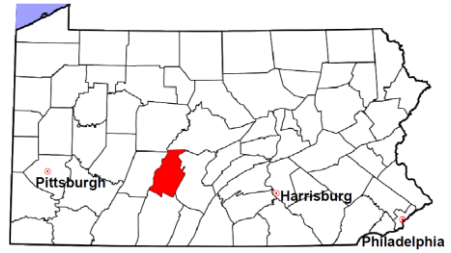
Data provided by CPCMS

* Other Permanency Outcomes include: adjudicated delinquent, death due to natural causes, emancipation, permanent living arrangement, and parent has come forward.

** Other includes cases where Court Supervision is terminated due to transfer out of jurisdiction, withdrawal and administrative closures.

Blair County

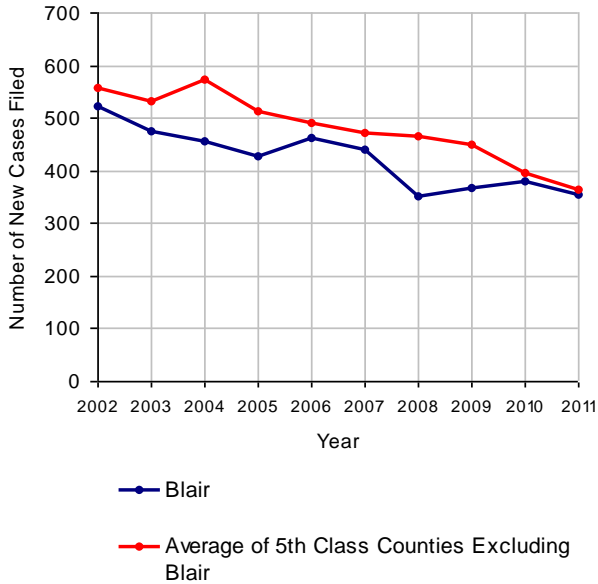
2011 Population Estimate: 127,099
 Class of County: 5th
 No. of Common Pleas Court Judgeships: 5



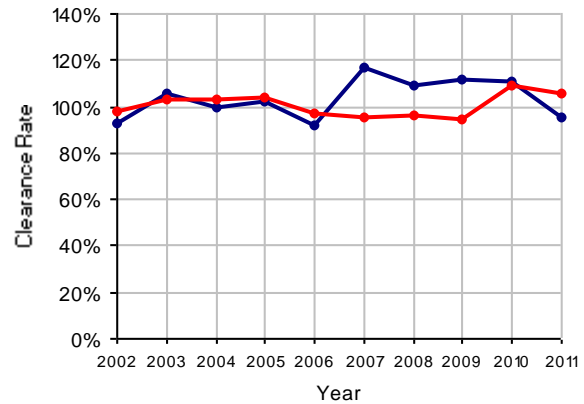
2011 Juvenile Delinquency

	No. of Cases
Cases Pending 1/1/2011	39
New Cases Filed in 2011	354
Cases Available for Processing	393
Processed By:	
Judge	141 41.6%
Non-Judicial Officer	198 58.4%
Other	0
Cases Processed	339 100.0%
Cases Pending 12/31/2011	54

Juvenile Delinquency New Cases Filed, 2002-2011

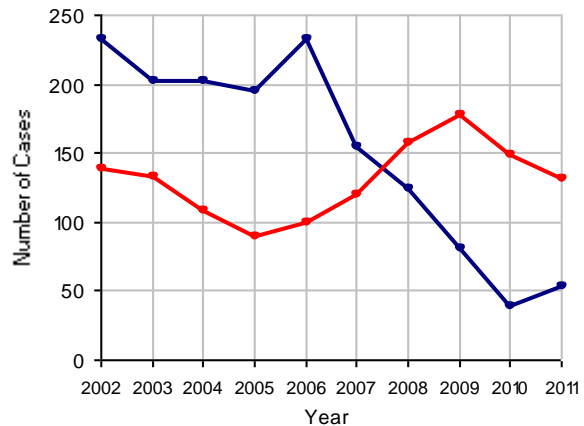


Clearance Rate, 2002-2011



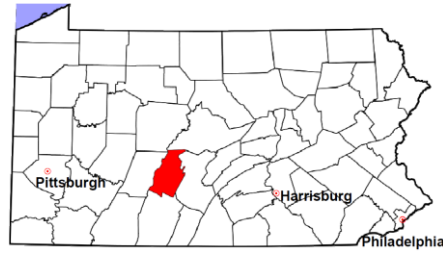
Note: Clearance Rate = Cases Processed / New Cases Filed

Cases Pending at the End of Year, 2002-2011



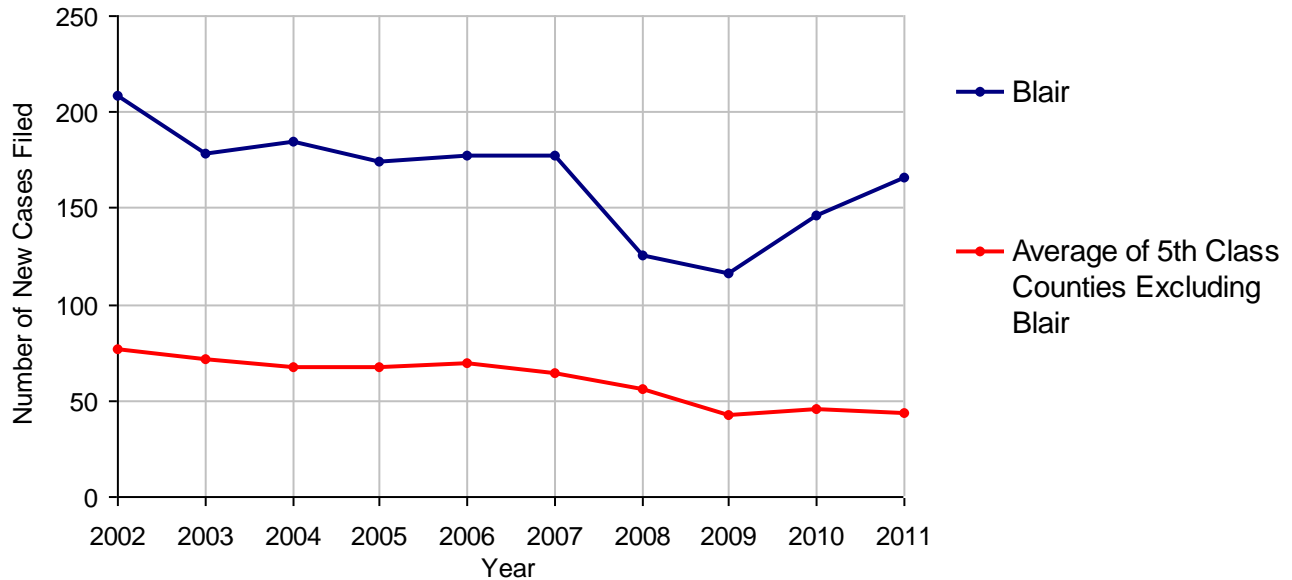
Blair County

2011 Population Estimate: 127,099
 Class of County: 5th
 No. of Common Pleas Court Judgeships: 5



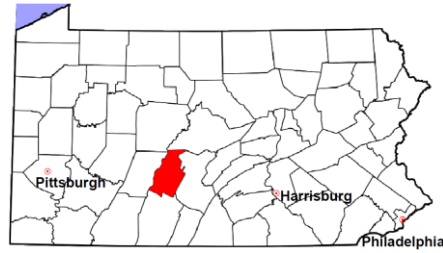
2011 Accounts	No. of Cases	
Cases Pending 1/1/2011	21	
New Cases Filed in 2011	166	
Cases Available for Processing	187	
Processed By:		
Contested before a Judge	0	
Contested before a Non-judicial Officer	0	
Uncontested	186	100.0%
Other	0	
Cases Processed	186	100.0%
Cases Pending 12/31/2011	1	

Accounts New Cases Filed, 2002-2011



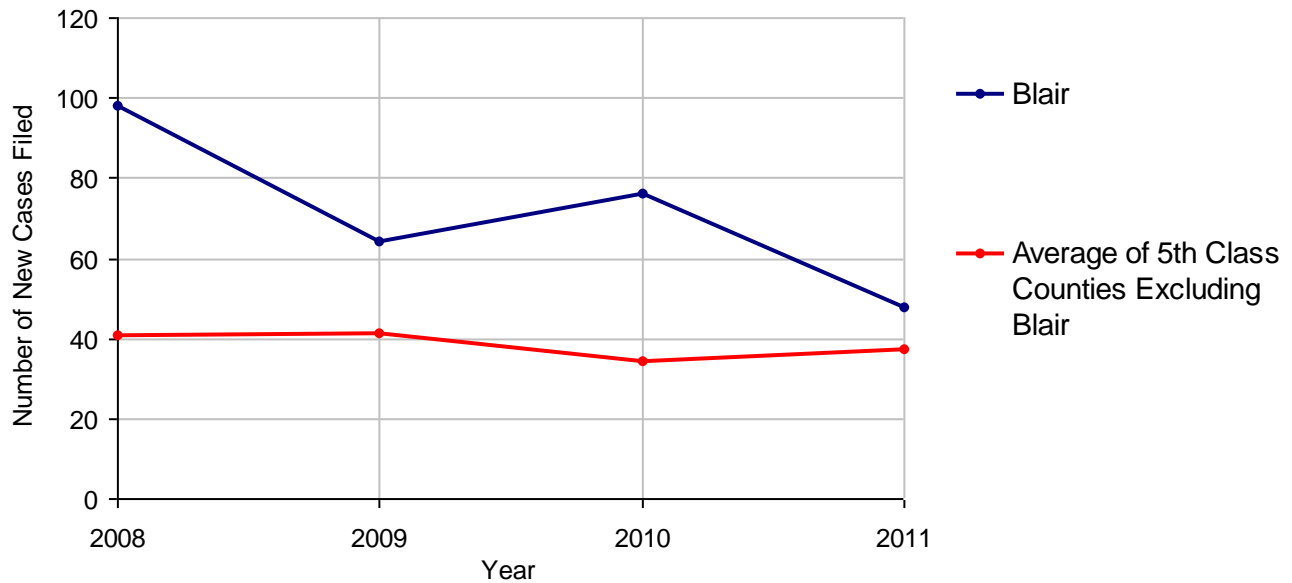
Blair County

2011 Population Estimate: 127,099
 Class of County: 5th
 No. of Common Pleas Court Judgeships: 5



2011 Adoptions		No. of Cases	
Cases Pending 1/1/2011		32	
New Cases Filed in 2011		48	
Cases Available for Processing		80	
Processed By:			
Contested before a Judge	Granted	1	2.1%
	Denied	0	
Uncontested	Granted	42	89.4%
	Denied	0	
Other		4	8.5%
Cases Processed		47	100.0%
Cases Pending 12/31/2011		33	

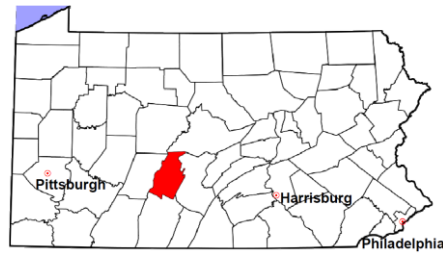
Adoptions New Cases Filed, 2008-2011



Note: Prior to 2008, each petition was counted as one new case, regardless of the number of children listed on the petition. Starting in 2008, each child listed on a petition is counted as a separate case. Therefore, statistics for the years since 2008 should not be compared to those for the years prior to 2008.

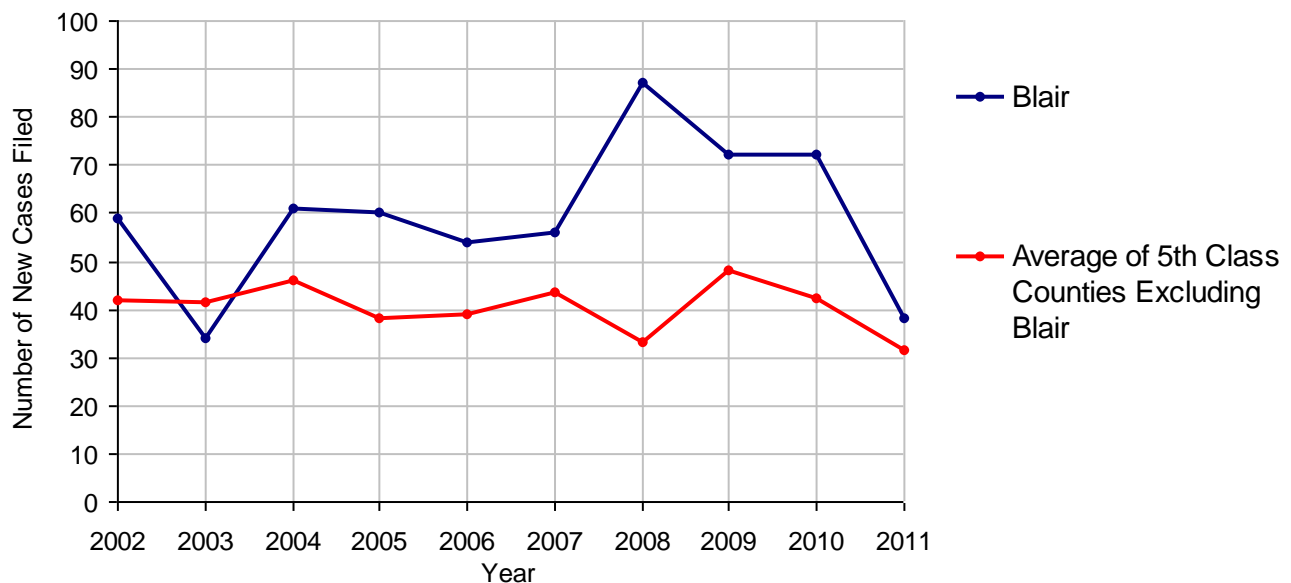
Blair County

2011 Population Estimate: 127,099
 Class of County: 5th
 No. of Common Pleas Court Judgeships: 5



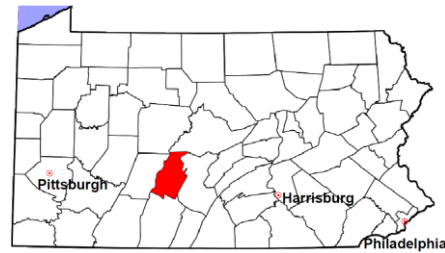
2011 Relinquishments/Terminations	No. of Cases
Cases Pending 1/1/2011	38
New Cases Filed in 2011	38
Cases Available for Processing	76
Processed By:	
Contested before a Judge	0
Uncontested	28 100.0%
Other	0
Cases Processed	28 100.0%
Cases Pending 12/31/2011	48

Relinquishments/Terminations New Cases Filed, 2002-2011



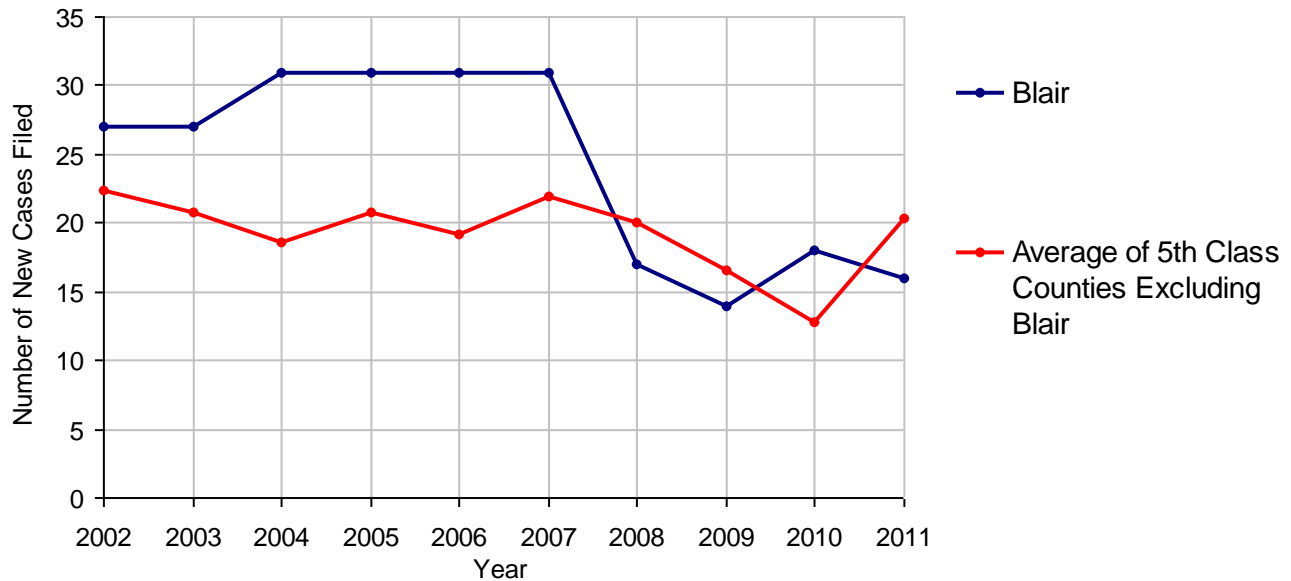
Blair County

2011 Population Estimate: 127,099
 Class of County: 5th
 No. of Common Pleas Court Judgeships: 5



2011 Appointment of Guardians	No. of Cases
Cases Pending 1/1/2011	36
New Cases Filed in 2011	16
Cases Available for Processing	52
Processed By:	
Contested before a Judge	0
Uncontested	6 100.0%
Other	0
Cases Processed	6 100.0%
Cases Pending 12/31/2011	46

Appointment of Guardians New Cases Filed, 2002-2011

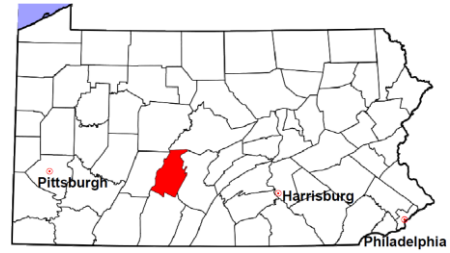


Blair County

2011 Population Estimate: 127,099

Class of County: 5th

No. of Common Pleas Court Judgeships: 5



2011 Jury Activity and Performance Measures

A. Juror Days	1,985
B. Number Sent to Voir Dire	1,400
Voir Dire Attendance Rate (B/A * 100)	70.5%
C. Number of Jurors Selected	540
Juror Selection Rate (C/B * 100)	38.6%

Note: In mid-2011, AOPC began utilizing the National Center for State Courts' Jury Managers' Toolbox for collecting jury data. This has resulted in limited jury performance measures being reported for 2011. Additional data will be available in 2012.