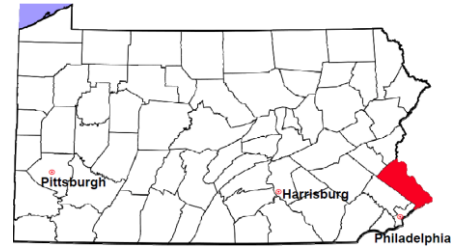


Bucks County

2011 Population Estimate: 626,854
 Class of County: 2A
 No. of Common Pleas Court Judgeships: 13



2011 Criminal	No. of Cases
----------------------	---------------------

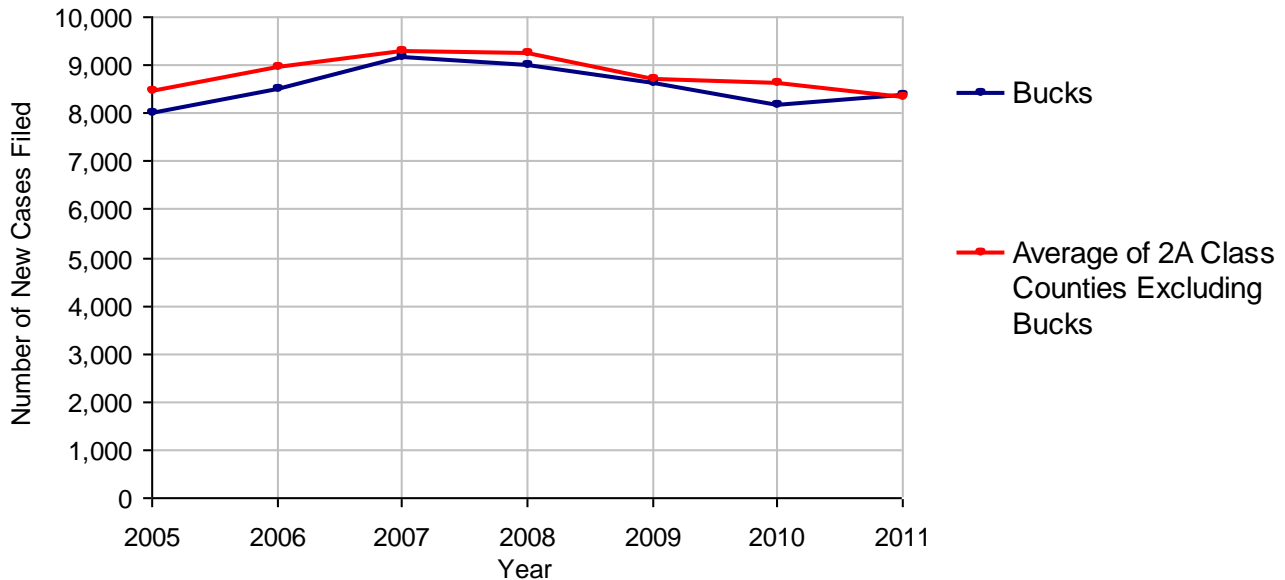
Cases Pending 1/1/2011	1,923
New Cases Filed in 2011	8,380
Reopened Cases	585
Cases Available for Disposition	10,888
Disposed by:	
Withdrawn/Dismissed	200 2.3%
ARD	2,040 23.9%
Guilty Plea	5,581 65.4%
Non-Jury Trial	43 0.5%
Jury Trial	56 0.7%
Inactive	421 4.9%
Other	197 2.3%
Total Cases Disposed	8,538 100.0%
Cases Pending 12/31/2011	2,350
Cases Awaiting Sentencing	250



Age of Pending Cases as of 12/31/2011		
0-60 Days	1,245	53.0%
61-120 Days	725	30.9%
121-180 Days	192	8.2%
181-240 Days	75	3.2%
241-300 Days	31	1.3%
301-360 Days	30	1.3%
Over 360 Days	52	2.2%
Total	2,350	100.0%

Data provided by CPCMS

Criminal New Cases Filed, 2005-2011

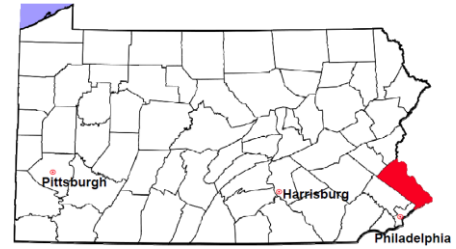


Bucks County

2011 Population Estimate: 626,854

Class of County: 2A

No. of Common Pleas Court Judgeships: 13



2011 Criminal - New Cases by Case Type



Case Type	Felony	Misdemeanor	Summary /Ungraded	Total
Person	282	639	5	926
Property	860	1,230	3	2,093
Drug	381	1,250	0	1,631
Weapon	28	36	0	64
Public Order	208	525	9	742
Motor Vehicle - DWI/DUI	0	2,894	0	2,894
Motor Vehicle - Other	3	25	0	28
Other	2	0	0	2
Total	1,764	6,599	17	8,380
	21.1%	78.7%	0.2%	100.0%

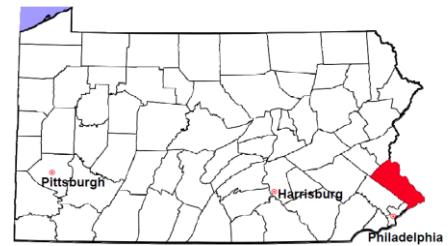
Data provided by CPCMS

Bucks County

2011 Population Estimate: 626,854

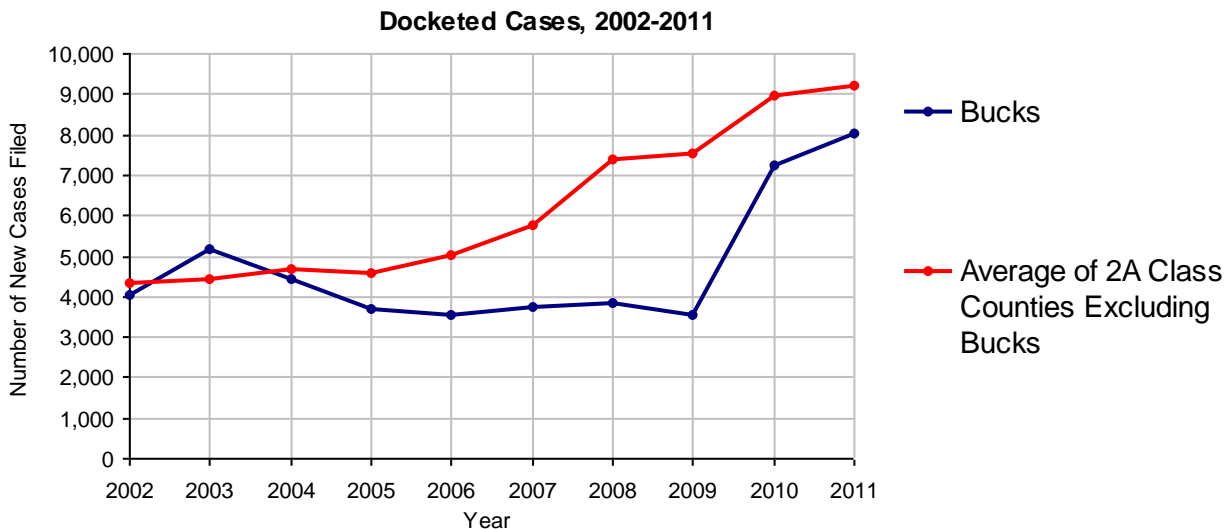
Class of County: 2A

No. of Common Pleas Court Judgeships: 13



2011 Civil	Civil Action	Other	Total
Cases Pending 1/1/2011	22,024	0	22,024
Docketed Cases	5,479	2,531	8,010
Arbitration Appeals	104	0	104
Transferred In	64	0	64
Returned to Active	10	0	10
Cases Available for Processing	27,681	2,531	30,212
Disposed By:			
Default Judgments	2,423	527	2,950
Cases Decided by Arbitration Board	109	10	119
Dispositive Motions	2,848	493	3,341
Settlements	1,613	158	1,771
Moved to Inactive Status	115	5	120
Transferred/Withdrawn	1,630	155	1,785
Pa.R.J.A. 1901 Administrative Purge	2,542	0	2,542
Other	65	0	65
Jury Trial	60	0	60
Non-Jury Trial	8	0	8
Total Cases Disposed	11,413	1,348	12,761
Cases Pending 12/31/2011	16,268	1,183	17,451

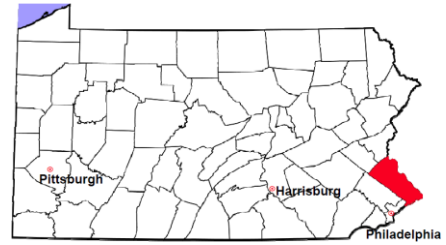
Age of Pending Cases as of 12/31/2011 (Civil Action Only)		
0-6 months	1,912	11.8%
7-12 months	1,536	9.4%
13-18 months	1,802	11.1%
19-24 months	1,428	8.8%
25-30 months	1,128	6.9%
31-36 months	932	5.7%
37-42 months	910	5.6%
43-48 months	648	4.0%
49-54 months	485	3.0%
55-60 months	367	2.3%
61-66 months	252	1.5%
67-72 months	235	1.4%
Over 72 months	4,633	28.5%
Total	16,268	100.0%



Note: Prior to June 2010, docketed cases under the "Other" category were not reported. The reporting of these cases starting from June 2010 may contribute to an increase in docketed cases from 2009 to 2010.

Bucks County

2011 Population Estimate: 626,854
 Class of County: 2A
 No. of Common Pleas Court Judgeships: 13



2011 Civil - Docketed Cases Listed by Case Type

TORT (does not include mass tort)

Intentional	35
Malicious Prosecution	4
Motor Vehicle	818
Nuisance	4
Premise Liability	239
Product Liability	12
Slander/Libel/Defamation	8
Other	257

MASS TORT

Asbestos	22
Tobacco	0
Toxic Tort - DES	0
Toxic Tort - Implant	0
Toxic Waste	0
Other	7

PROFESSIONAL LIABILITY

Dental	7
Legal	10
Medical Malpractice	30
Other	13

CONTRACT

(does not include judgments)

Buyer Plaintiff	47
Debt Collection:	
Credit Card	2,529
Other	1,018
Employment Dispute:	
Discrimination	2
Other	32
Other	363

REAL PROPERTY

Ejectment*	187
Eminent Domain/ Condemnation*	5
Ground Rent	0
Landlord/Tenant Dispute	22
Mortgage Forclosures:	
Residential*	1,278
Commercial*	29
Partition of Real Property*	11
Quiet Title*	27
Other*	32

CIVIL APPEALS

Administrative Agencies

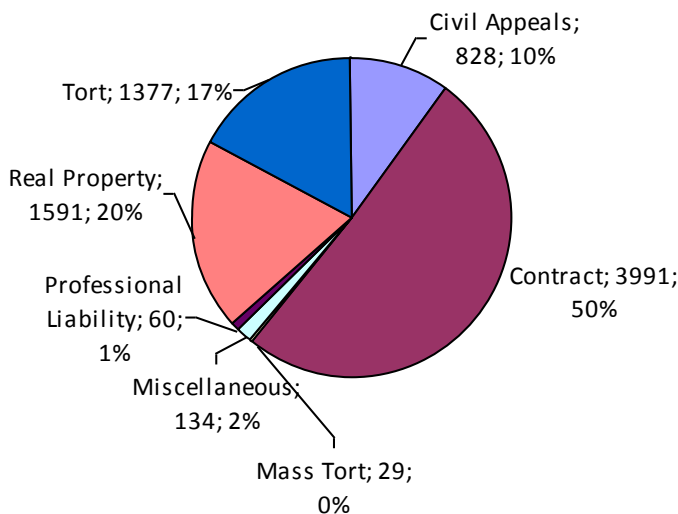
Board of Assessment*	1
Board of Elections*	104
Dept. of Transportation*	211
Zoning Board*	38
Statutory Appeal - Other*	2
Other*	472

MISCELLANEOUS

Common Law/ Statutory Arbitration*	1
Declaratory Judgment*	33
Mandamus*	3
Non-Domestic Relations Restraining Order*	19
Quo Warranto*	2
Replevin*	29
Other*	47

TOTAL DOCKETED CASES:
8,010

* Civil Other



Of the Docketed Cases:

Pro Se Filings:	175	2.2%
Class Action Suits:	1	<0.1%
MDJ Appeals:	428	5.3%

Bucks County

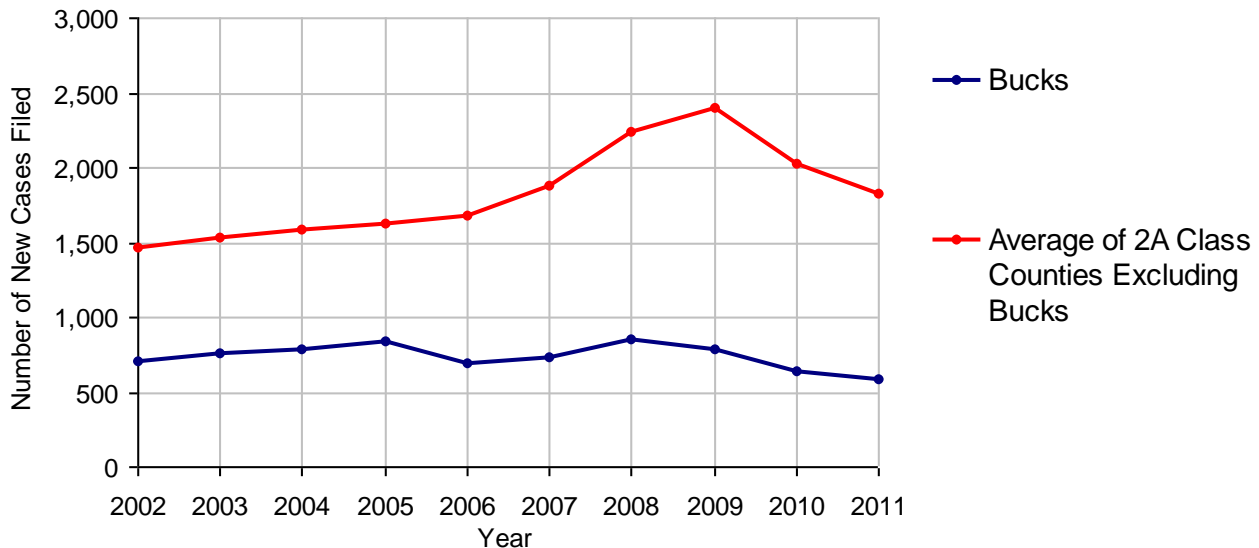
2011 Population Estimate: 626,854
 Class of County: 2A
 No. of Common Pleas Court Judgeships: 13



2011 Protection From Abuse

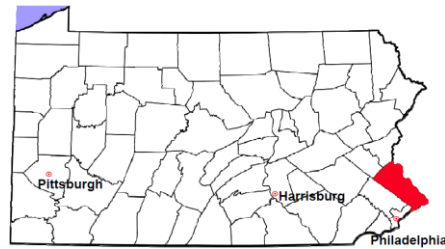
	No. of Petitions
Cases Pending 1/1/2011	53
New Cases Filed in 2011	592
<i>Of these, Petitions Requesting Temporary Orders: 592 (100.0%)</i>	
<i>Temporary Orders DENIED: 376 (63.5%), Temporary Orders GRANTED: 216 (36.5%)</i>	
Cases Available for Processing	645
Processed By:	
Temporary Order DENIED After Ex Parte Hearing and No Evidentiary Hearing Scheduled	1 0.2%
Temporary Order DISMISSED After Evidentiary Hearing and No Final Order Entered	52 9.1%
Final Order DENIED After Evidentiary Hearing Before a Judge	10 1.7%
Final Order GRANTED After Evidentiary Hearing Before a Judge	120 20.9%
Plaintiff Did Not Appear For Evidentiary Hearing	72 12.6%
Final Order by STIPULATION OR AGREEMENT Between the Parties	153 26.7%
Petition WITHDRAWN by Plaintiff	165 28.8%
TRANSFERRED to Another Jurisdiction	0
DECEASED Party	0
Other	0
Cases Processed	573 100.0%
Cases Pending 12/31/2011	72

PFA New Cases Filed, 2002-2011

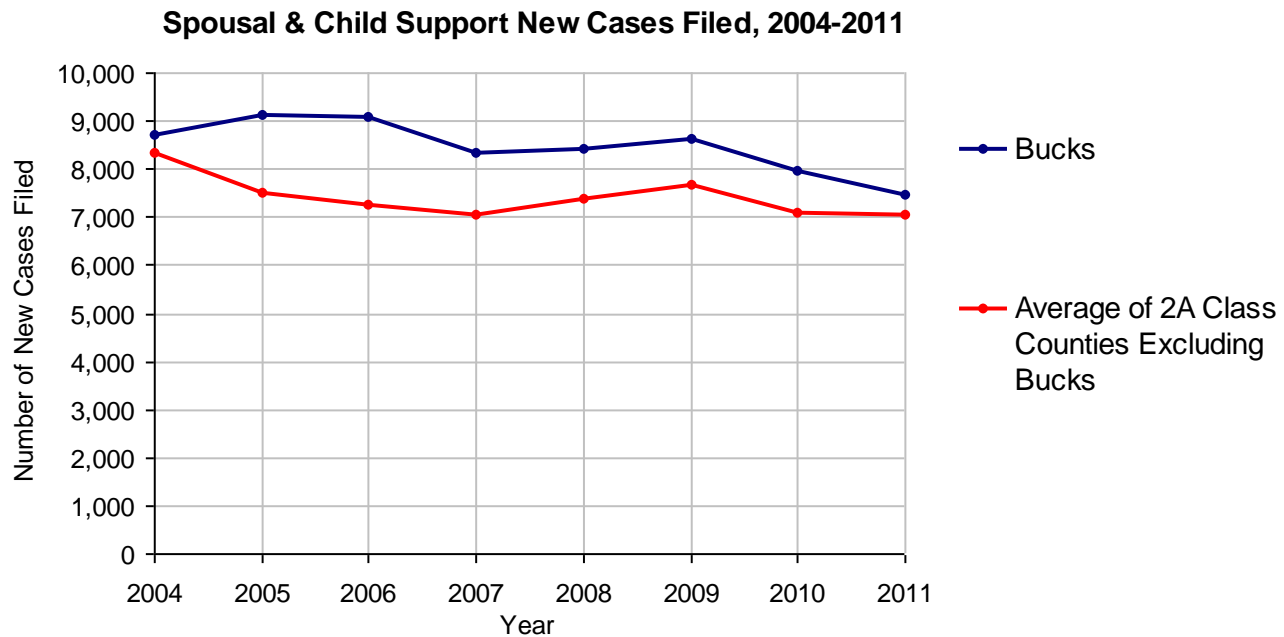


Bucks County

2011 Population Estimate: 626,854
 Class of County: 2A
 No. of Common Pleas Court Judgeships: 13



2011 Spousal & Child Support	No. of Petitions	
Cases Pending 1/1/2011	1,459	
New Cases Filed in 2011	7,453	
Dockets Transferred In (+)	71	
Dockets Transferred Out (-)	223	
Cases Available for Processing	8,760	
Processed By:		
Judge	1,028	14.1%
Intake Officer	6,277	85.9%
Hearing Officer	1	<0.1%
Other	0	
Cases Processed	7,306	100.0%
Cases Pending 12/31/2011	1,454	

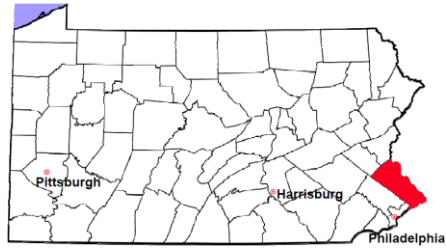


Bucks County

2011 Population Estimate: 626,854

Class of County: 2A

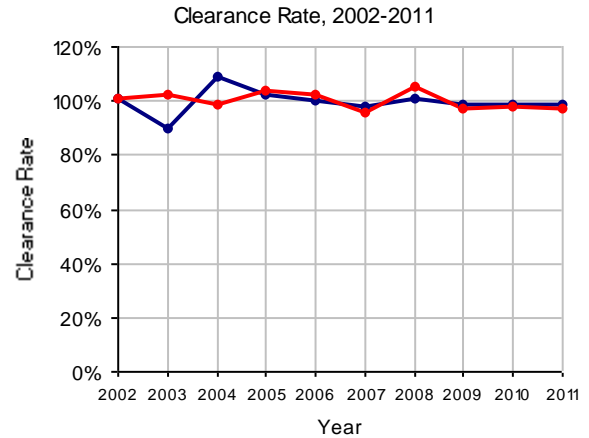
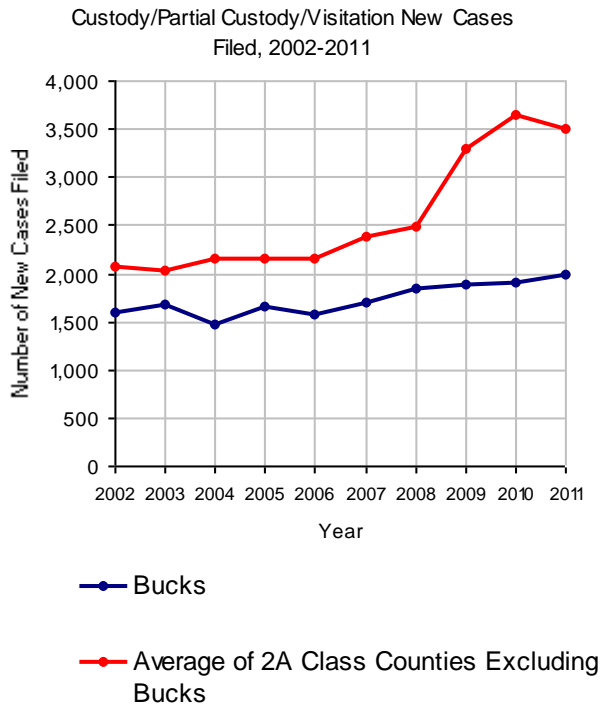
No. of Common Pleas Court Judgeships: 13



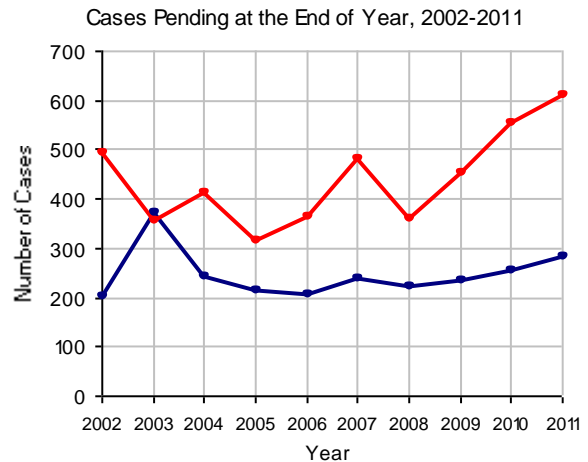
2011 Custody/Partial Custody/Visitation

No. of
Petitions

Cases Pending 1/1/2011	254
New Cases Filed in 2011	1,999
Cases Available for Processing	2,253
Processed By:	
Judge	756 38.4%
Non-Judicial Officer	730 37.1%
Other	482 24.5%
Cases Processed	1,968 100.0%
Cases Pending 12/31/2011	285

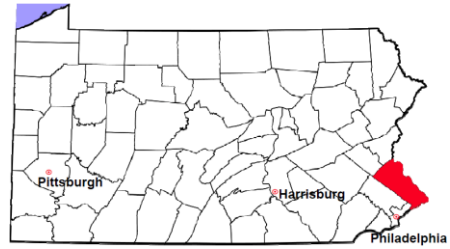


Note: Clearance Rate = Cases Processed / New Cases Filed



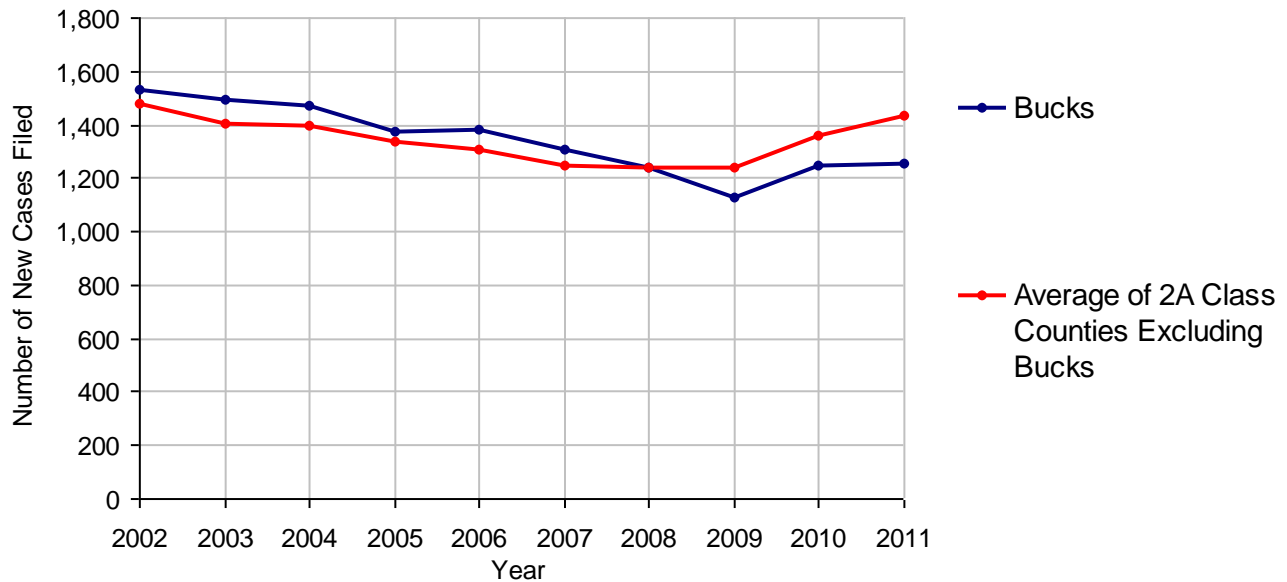
Bucks County

2011 Population Estimate: 626,854
 Class of County: 2A
 No. of Common Pleas Court Judgeships: 13



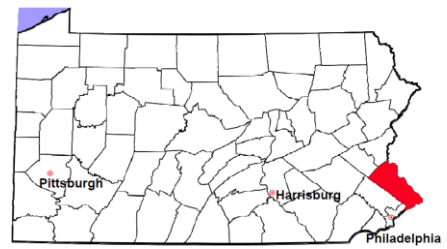
2011 Divorce	No. of Petitions	
Cases Pending 1/1/2011	389	
New Cases Filed in 2011	1,255	
Cases Available for Processing	1,644	
Processed By:		
Contested Before a Judge	26	2.1%
Contested Before a Master	116	9.5%
Uncontested	1,080	88.4%
Other	0	
Cases Processed	1,222	100.0%
Cases Pending 12/31/2011	422	

Divorce New Cases Filed, 2002-2011



Bucks County

2011 Population Estimate: 626,854
 Class of County: 2A
 No. of Common Pleas Court Judgeships: 13

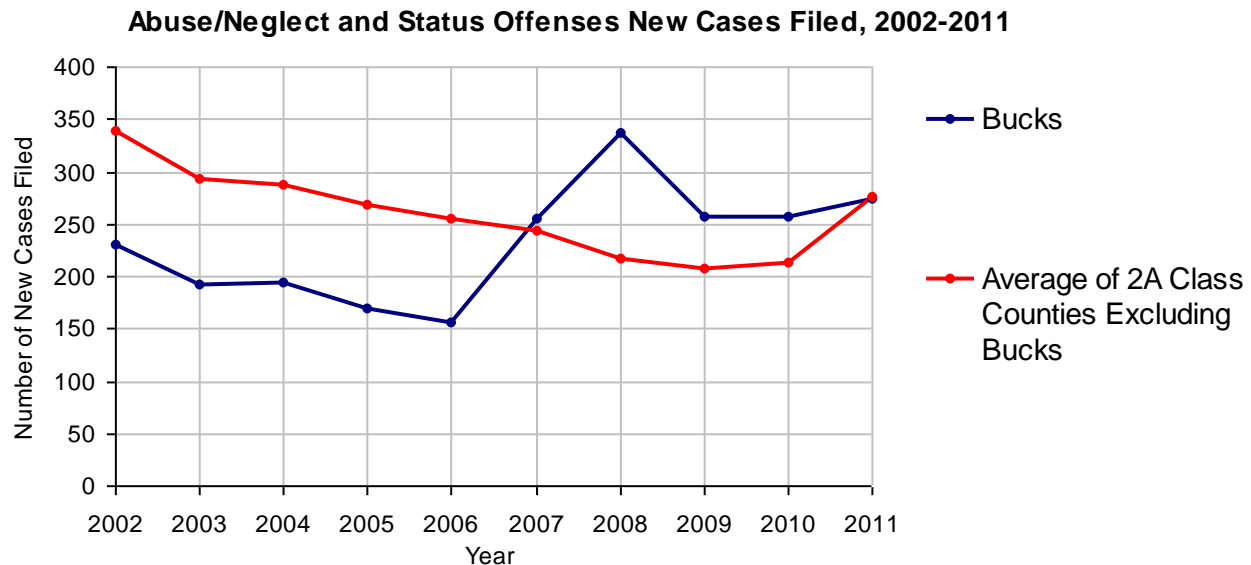


2011 Juvenile Dependency - Active Dependent Inventory



	Abuse/ Neglect	Status Offenses	Total
Cases Pending 1/1/2011	121	1	122
New Petitions Filed in 2011	274	0	274
Other	8	0	8
Total Petitions Available for Processing	403	1	404
Processed by:			
Adjudicated Dependent			
Judge	169	0	169
Master	0	0	0
Adjudicated NOT Dependent			
Judge	3	0	3
Master	0	0	0
Withdrawn/Dismissed/Inactive	80	0	80
Other	20	0	20
Total Petitions Processed	272	0	272
Cases Pending 12/31/2011	131	1	132

Data provided by CPCMS



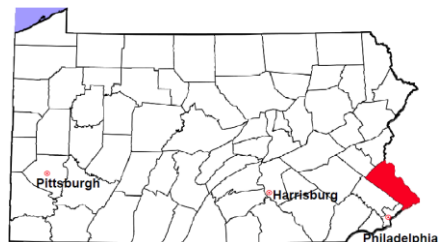
Note: Dependency data for 2002-2010 were collected manually. Dependency data for 2011 were provided by CPCMS.

Bucks County

2011 Population Estimate: 626,854

Class of County: 2A

No. of Common Pleas Court Judgeships: 13



2011 Juvenile Dependency - Adjudicated Dependent Inventory



	Abuse/ Neglect	Status Offenses	Total	
Cases Pending 1/1/2011	462	0	462	
New Adjudicated Dependent Cases	169	0	169	
Other	15	0	15	
Total Adjudicated Dependent Cases	646	0	646	
<u>Court Supervision Terminated:</u>				
Family Reunification	48	0	48	22.2%
Adoption	64	0	64	29.6%
Placement with a Relative/Guardian	57	0	57	26.4%
Aged Out	30	0	30	13.9%
Other Permanency Outcomes*	8	0	8	3.7%
Other**	9	0	9	4.2%
Total Adjudicated Dependent Cases Terminated	216	0	216	100.0%
Cases Pending 12/31/2011	430	0	430	

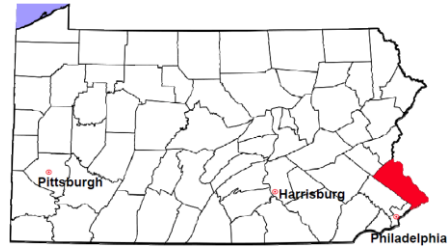
Data provided by CPCMS

* Other Permanency Outcomes include: adjudicated delinquent, death due to natural causes, emancipation, permanent living arrangement, and parent has come forward.

** Other includes cases where Court Supervision is terminated due to transfer out of jurisdiction, withdrawal and administrative closures.

Bucks County

2011 Population Estimate: 626,854
 Class of County: 2A
 No. of Common Pleas Court Judgeships: 13

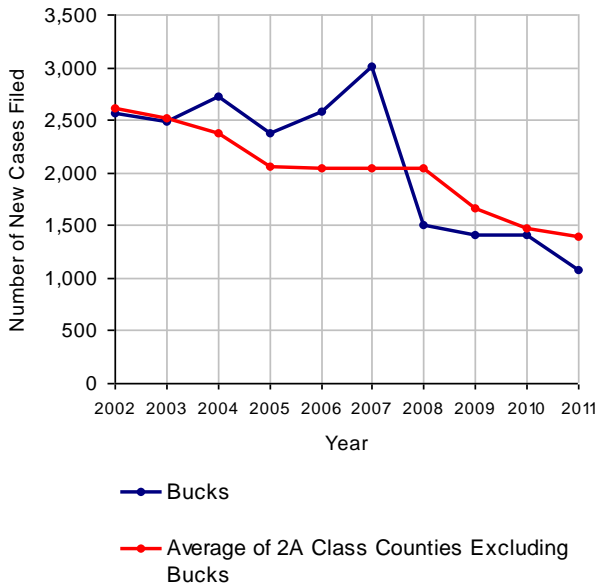


2011 Juvenile Delinquency

	No. of Cases
Cases Pending 1/1/2011	292 ^(R)
New Cases Filed in 2011	1,082
Cases Available for Processing	1,374
Processed By:	
Judge	850 75.2%
Non-Judicial Officer	281 24.8%
Other	0
Cases Processed	1,131 100.0%
Cases Pending 12/31/2011	243

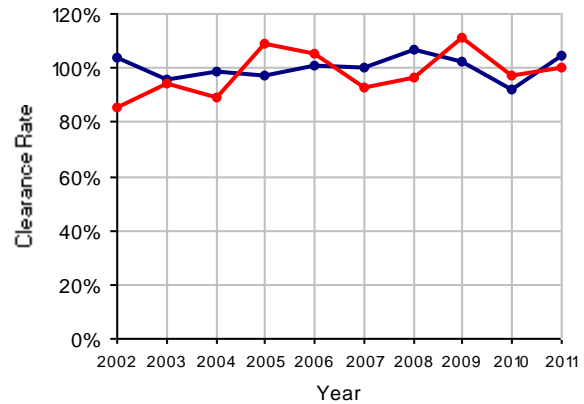
(R) - Revised

Juvenile Delinquency New Cases Filed, 2002-2011



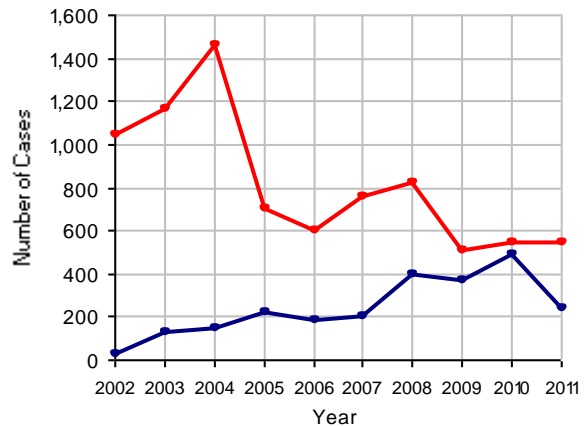
Note: The significant drop in new cases filed from 2007 to 2008 reflects a change in reporting methods.

Clearance Rate, 2002-2011



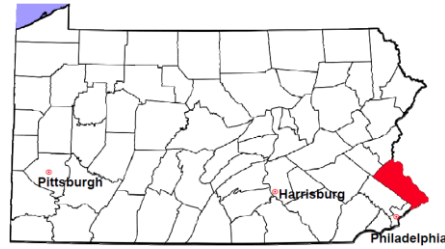
Note: Clearance Rate = Cases Processed / New Cases Filed

Cases Pending at the End of Year, 2002-2011



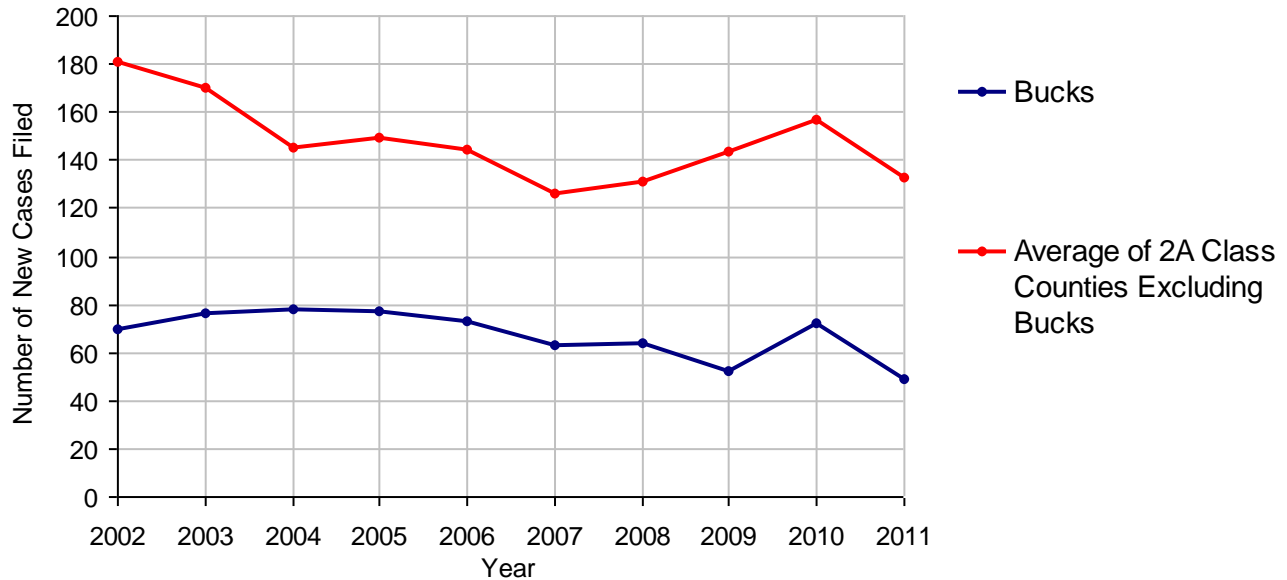
Bucks County

2011 Population Estimate: 626,854
 Class of County: 2A
 No. of Common Pleas Court Judgeships: 13



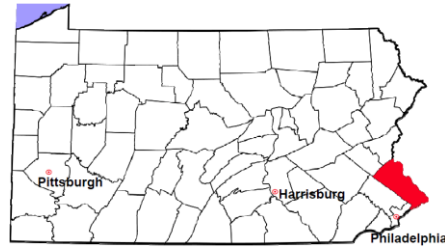
2011 Accounts	No. of Cases	
Cases Pending 1/1/2011	65	
New Cases Filed in 2011	49	
Cases Available for Processing	114	
Processed By:		
Contested before a Judge	16	27.6%
Contested before a Non-judicial Officer	0	
Uncontested	37	63.8%
Other	5	8.6%
Cases Processed	58	100.0%
Cases Pending 12/31/2011	56	

Accounts New Cases Filed, 2002-2011



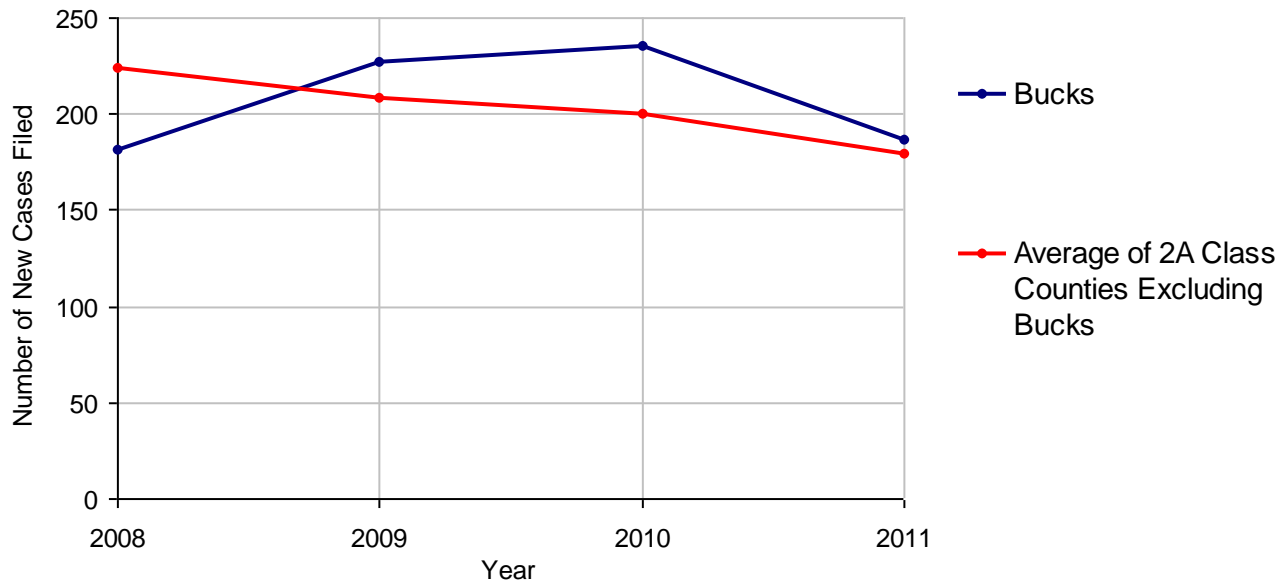
Bucks County

2011 Population Estimate: 626,854
 Class of County: 2A
 No. of Common Pleas Court Judgeships: 13



2011 Adoptions		No. of Cases	
Cases Pending 1/1/2011		91	
New Cases Filed in 2011		187	
Cases Available for Processing		278	
Processed By:			
Contested before a Judge	Granted	0	
	Denied	0	
Uncontested	Granted	182	95.3%
	Denied	0	
Other		9	4.7%
Cases Processed		191	100.0%
Cases Pending 12/31/2011		87	

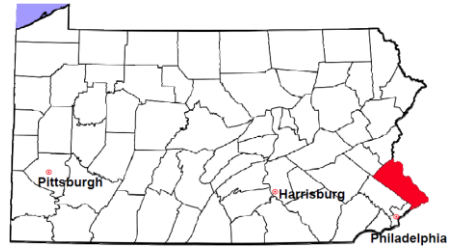
Adoptions New Cases Filed, 2008-2011



Note: Prior to 2008, each petition was counted as one new case, regardless of the number of children listed on the petition. Starting in 2008, each child listed on a petition is counted as a separate case. Therefore, statistics for the years since 2008 should not be compared to those for the years prior to 2008.

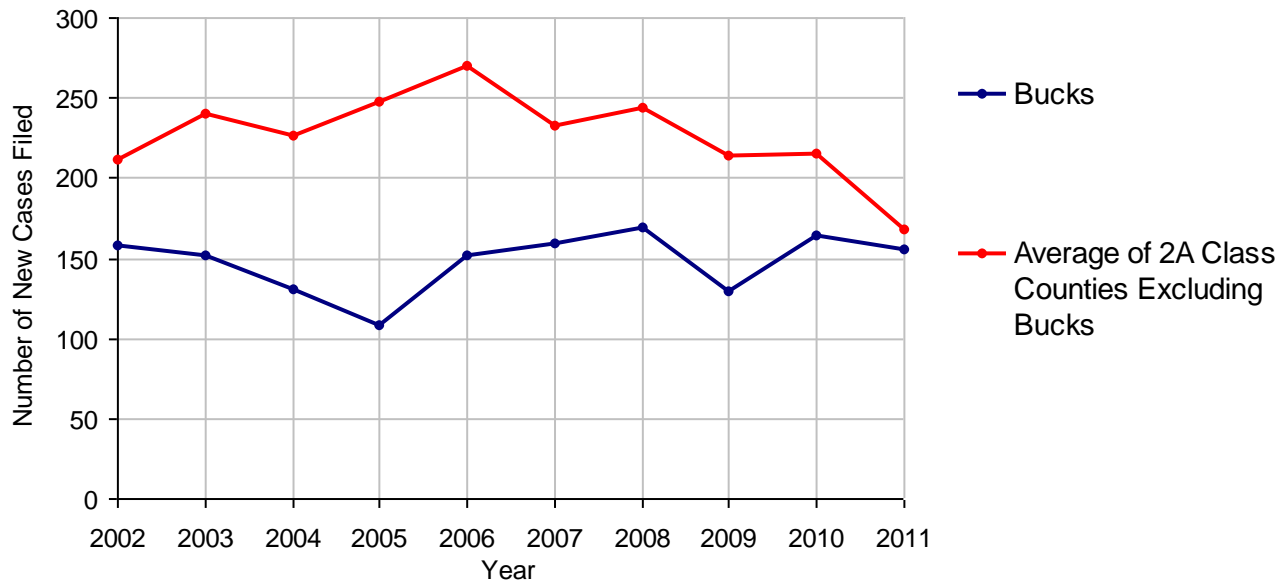
Bucks County

2011 Population Estimate: 626,854
 Class of County: 2A
 No. of Common Pleas Court Judgeships: 13



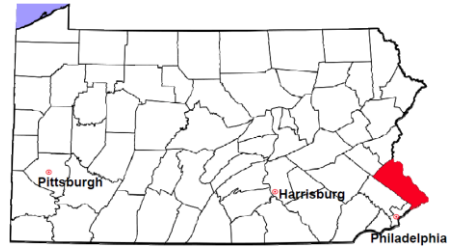
2011 Relinquishments/Terminations	No. of Cases	
Cases Pending 1/1/2011	83	
New Cases Filed in 2011	156	
Cases Available for Processing	239	
Processed By:		
Contested before a Judge	53	35.1%
Uncontested	85	56.3%
Other	13	8.6%
Cases Processed	151	100.0%
Cases Pending 12/31/2011	88	

Relinquishments/Terminations New Cases Filed, 2002-2011



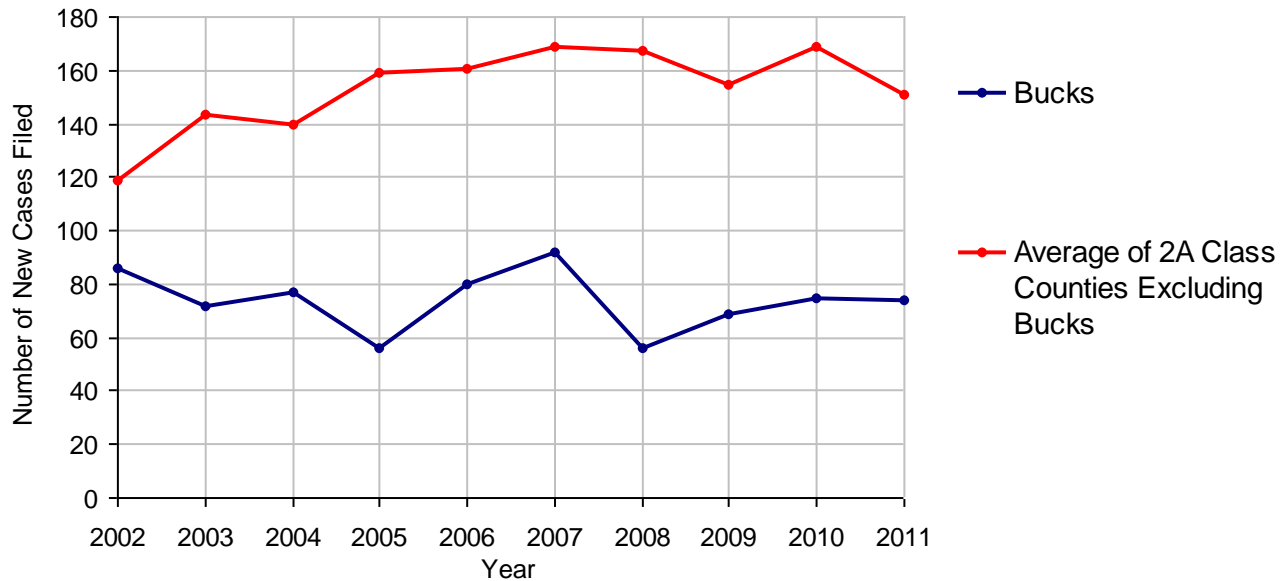
Bucks County

2011 Population Estimate: 626,854
 Class of County: 2A
 No. of Common Pleas Court Judgeships: 13



2011 Appointment of Guardians		No. of Cases
Cases Pending 1/1/2011		38
New Cases Filed in 2011		74
Cases Available for Processing		112
Processed By:		
Contested before a Judge	4	5.4%
Uncontested	64	86.5%
Other	6	8.1%
Cases Processed	74	100.0%
Cases Pending 12/31/2011		38

Appointment of Guardians New Cases Filed, 2002-2011



Bucks County

2011 Population Estimate: 626,854

Class of County: 2A

No. of Common Pleas Court Judgeships: 13



2011 Jury Activity and Performance Measures

A. Juror Days	11,335	
B. Number Sent to Voir Dire	4,726	
Voir Dire Attendance Rate (B/A * 100)		41.7%
C. Number of Jurors Selected	1,321	
Juror Selection Rate (C/B * 100)		28.0%

Note: In mid-2011, AOPC began utilizing the National Center for State Courts' Jury Managers' Toolbox for collecting jury data. This has resulted in limited jury performance measures being reported for 2011. Additional data will be available in 2012.