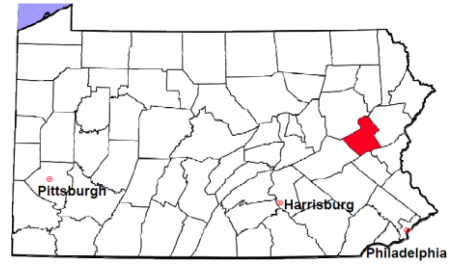


Carbon County

2011 Population Estimate: 65,154
 Class of County: 6th
 No. of Common Pleas Court Judgeships: 3



2011 Criminal	No. of Cases
---------------	--------------

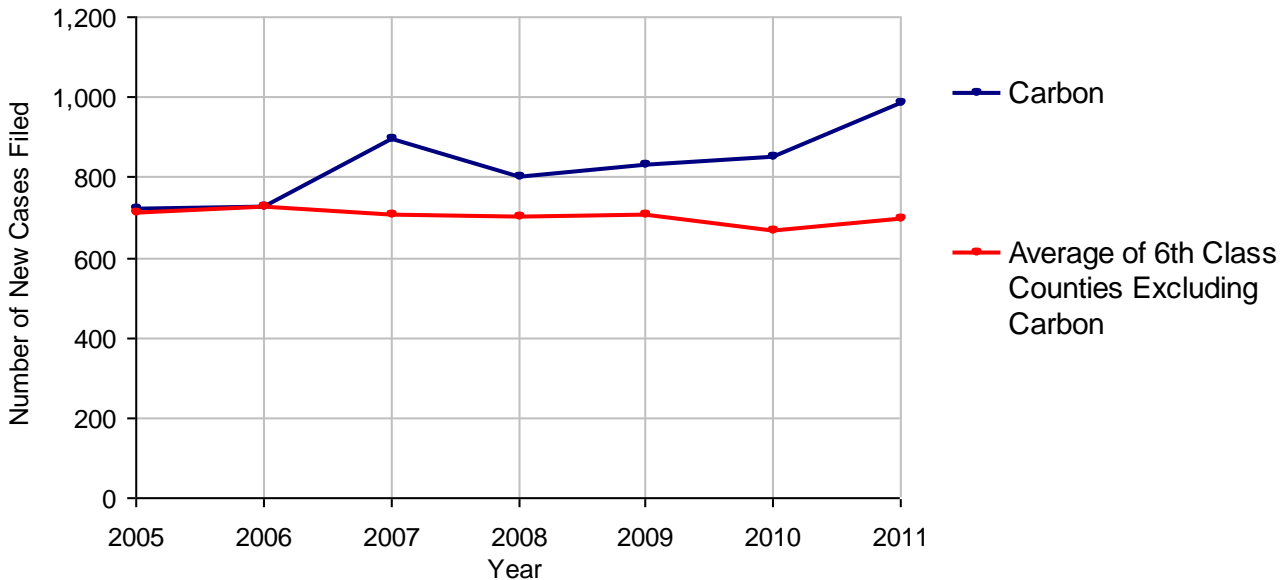
Cases Pending 1/1/2011	403
New Cases Filed in 2011	985
Reopened Cases	83
Cases Available for Disposition	1,471
Disposed by:	
Withdrawn/Dismissed	40 4.3%
ARD	119 12.8%
Guilty Plea	631 67.8%
Non-Jury Trial	2 0.2%
Jury Trial	10 1.1%
Inactive	20 2.2%
Other	108 11.6%
Total Cases Disposed	930 100.0%
Cases Pending 12/31/2011	541
Cases Awaiting Sentencing	38



Age of Pending Cases as of 12/31/2011		
0-60 Days	174	32.2%
61-120 Days	102	18.9%
121-180 Days	68	12.6%
181-240 Days	57	10.5%
241-300 Days	29	5.4%
301-360 Days	39	7.2%
Over 360 Days	72	13.3%
Total	541	100.0%

Data provided by CPCMS

Criminal New Cases Filed, 2005-2011

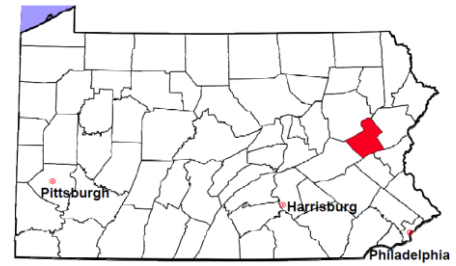


Carbon County

2011 Population Estimate: 65,154

Class of County: 6th

No. of Common Pleas Court Judgeships: 3



2011 Criminal - New Cases by Case Type

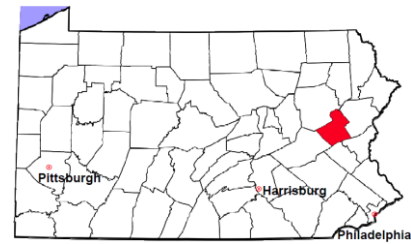


Case Type	Felony	Misdemeanor	Summary /Ungraded	Total
Person	61	101	0	162
Property	137	118	0	255
Drug	62	94	0	156
Weapon	11	3	0	14
Public Order	35	68	0	103
Motor Vehicle - DWI/DUI	0	285	0	285
Motor Vehicle - Other	0	6	0	6
Other	3	1	0	4
Total	309	676	0	985
	31.4%	68.6%		100.0%

Data provided by CPCMS

Carbon County

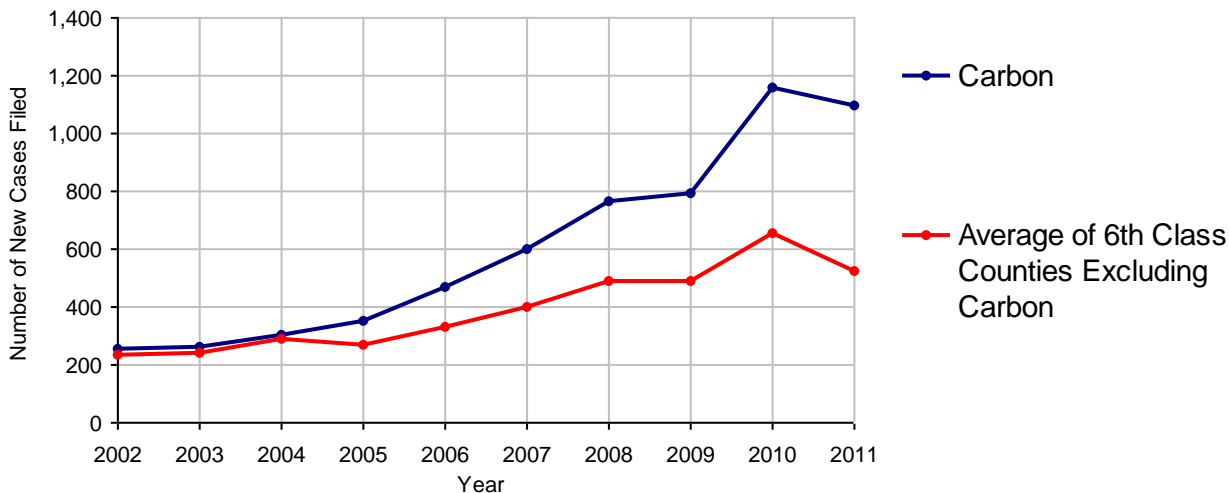
2011 Population Estimate: 65,154
 Class of County: 6th
 No. of Common Pleas Court Judgeships: 3



2011 Civil	Civil Action	Other	Total
Cases Pending 1/1/2011	614	341	955
Docketed Cases	648	452	1,100
Arbitration Appeals	14	0	14
Transferred In	5	1	6
Returned to Active	5	1	6
Cases Available for Processing	1,286	795	2,081
Disposed By:			
Default Judgments	263	194	457
Cases Decided by Arbitration Board	73	1	74
Dispositive Motions	60	30	90
Settlements	275	135	410
Moved to Inactive Status	38	9	47
Transferred/Withdrawn	27	5	32
Pa.R.J.A. 1901 Administrative Purge	2	0	2
Other	14	8	22
Jury Trial	4	0	4
Non-Jury Trial	24	78	102
Total Cases Disposed	780	460	1,240
Cases Pending 12/31/2011	506	335	841

Age of Pending Cases as of 12/31/2011 (Civil Action Only)		
0-6 months	201	39.7%
7-12 months	123	24.3%
13-18 months	68	13.4%
19-24 months	40	7.9%
25-30 months	24	4.7%
31-36 months	18	3.6%
37-42 months	13	2.6%
43-48 months	9	1.8%
49-54 months	2	0.4%
55-60 months	2	0.4%
61-66 months	2	0.4%
67-72 months	0	
Over 72 months	4	0.8%
Total	506	100.0%

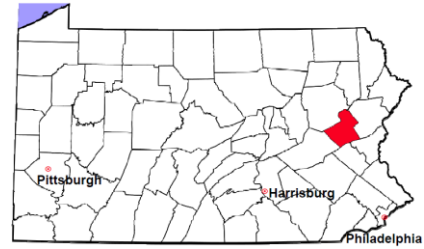
Docketed Cases, 2002-2011



Note: Prior to June 2010, docketed cases under the "Other" category were not reported. The reporting of these cases starting from June 2010 may contribute to an increase in docketed cases from 2009 to 2010.

Carbon County

2011 Population Estimate: 65,154
 Class of County: 6th
 No. of Common Pleas Court Judgeships: 3



2011 Civil - Docketed Cases Listed by Case Type

TORT (does not include mass tort)

Intentional	3
Malicious Prosecution	1
Motor Vehicle	58
Nuisance	3
Premise Liability	26
Product Liability	3
Slander/Libel/Defamation	2
Other	13

MASS TORT

Asbestos	0
Tobacco	0
Toxic Tort - DES	0
Toxic Tort - Implant	0
Toxic Waste	0
Other	0

PROFESSIONAL LIABILITY

Dental	0
Legal	0
Medical Malpractice	5
Other	0

CONTRACT

(does not include judgments)

Buyer Plaintiff	4
Debt Collection:	
Credit Card	343
Other	101
Employment Dispute:	
Discrimination	0
Other	6
Other	56

REAL PROPERTY

Ejectment*	40
Eminent Domain/ Condemnation*	1
Ground Rent	0
Landlord/Tenant Dispute	24
Mortgage Forclosures:	
Residential*	245
Commercial*	7
Partition of Real Property*	3
Quiet Title*	26
Other*	0

CIVIL APPEALS

Administrative Agencies

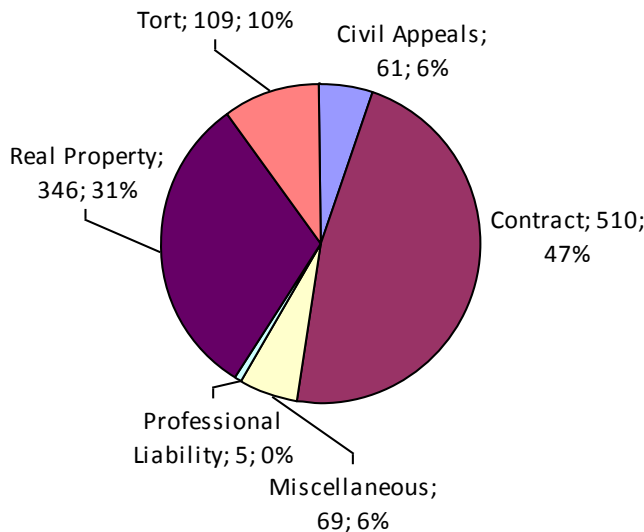
Board of Assessment*	35
Board of Elections*	0
Dept. of Transportation*	19
Zoning Board*	1
Statutory Appeal - Other*	5
Other*	1

MISCELLANEOUS

Common Law/ Statutory Arbitration*	0
Declaratory Judgment*	4
Mandamus*	1
Non-Domestic Relations Restraining Order*	0
Quo Warranto*	0
Replevin*	2
Other*	62

TOTAL DOCKETED CASES:
1,100

* Civil Other



Of the Docketed Cases:

Pro Se Filings:	102	9.3%
Class Action Suits:	0	
MDJ Appeals:	88	8.0%

Carbon County

2011 Population Estimate: 65,154
 Class of County: 6th
 No. of Common Pleas Court Judgeships: 3



2011 Protection From Abuse

**No. of
Petitions**

Cases Pending 1/1/2011	23
New Cases Filed in 2011	302

*Of these, Petitions Requesting Temporary Orders: 302 (100.0%)
 Temporary Orders DENIED: 61 (20.2%), Temporary Orders GRANTED: 241 (79.8%)*

Cases Available for Processing 325

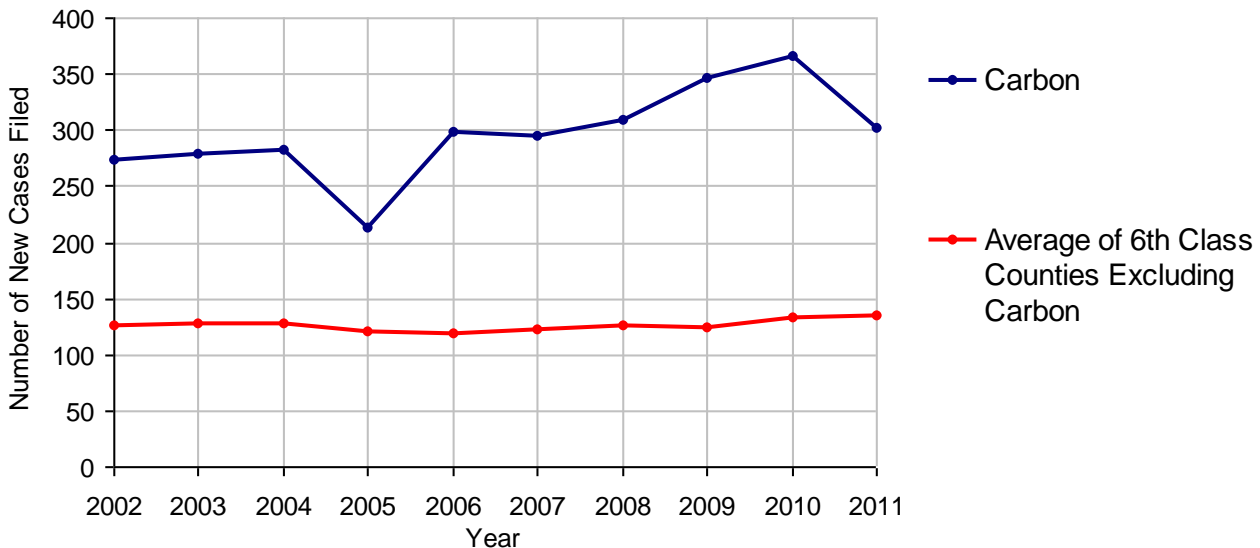
Processed By:

Temporary Order DENIED After Ex Parte Hearing and No Evidentiary Hearing Scheduled	0	
Temporary Order DISMISSED After Evidentiary Hearing and No Final Order Entered	13	4.5%
Final Order DENIED After Evidentiary Hearing Before a Judge	45	15.6%
Final Order GRANTED After Evidentiary Hearing Before a Judge	48	16.6%
Plaintiff Did Not Appear For Evidentiary Hearing	39	13.5%
Final Order by STIPULATION OR AGREEMENT Between the Parties	26	9.0%
Petition WITHDRAWN by Plaintiff	117	40.5%
TRANSFERRED to Another Jurisdiction	1	0.3%
DECEASED Party	0	
Other	0	

Cases Processed 289 100.0%

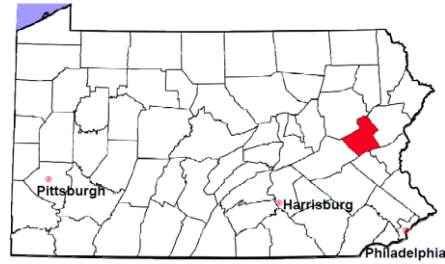
Cases Pending 12/31/2011 36

PFA New Cases Filed, 2002-2011

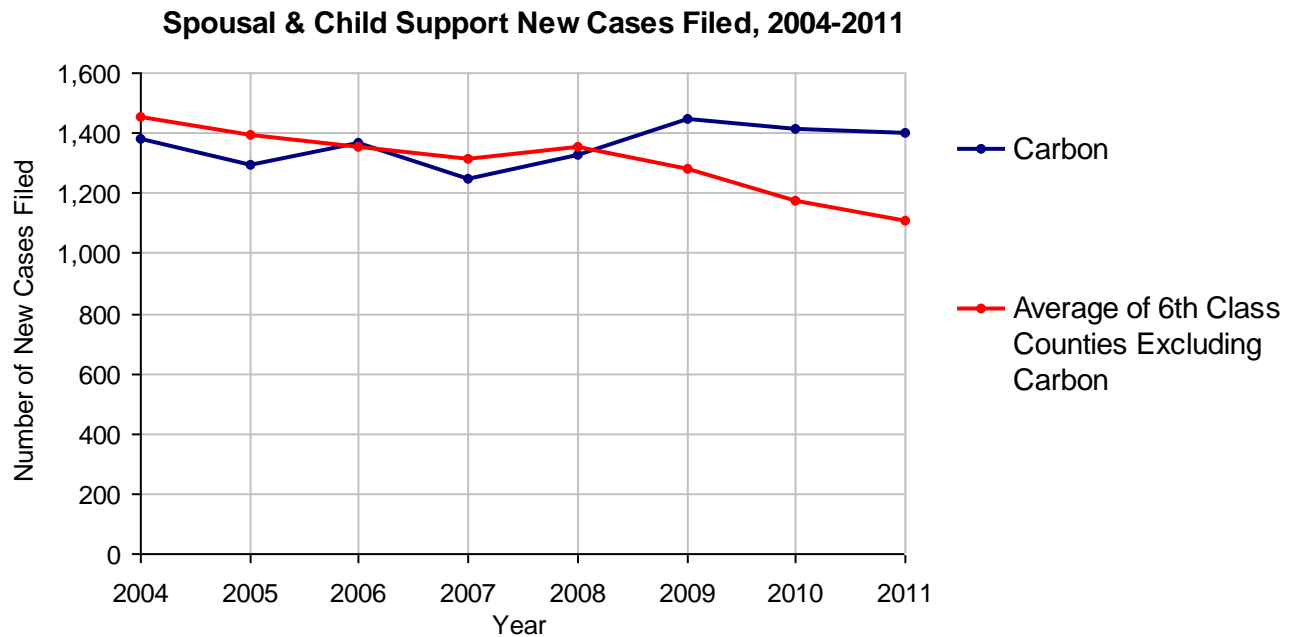


Carbon County

2011 Population Estimate: 65,154
 Class of County: 6th
 No. of Common Pleas Court Judgeships: 3



2011 Spousal & Child Support	No. of Petitions	
Cases Pending 1/1/2011	215	
New Cases Filed in 2011	1,401	
Dockets Transferred In (+)	32	
Dockets Transferred Out (-)	37	
Cases Available for Processing	1,611	
Processed By:		
Judge	14	1.0%
Intake Officer	1,254	92.8%
Hearing Officer	83	6.1%
Other	0	
Cases Processed	1,351	100.0%
Cases Pending 12/31/2011	260	

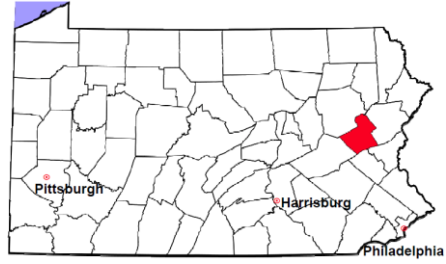


Carbon County

2011 Population Estimate: 65,154

Class of County: 6th

No. of Common Pleas Court Judgeships: 3



2011 Custody/Partial Custody/Visitation

No. of Petitions

Cases Pending 1/1/2011	116
New Cases Filed in 2011	403
Cases Available for Processing	519

Processed By:

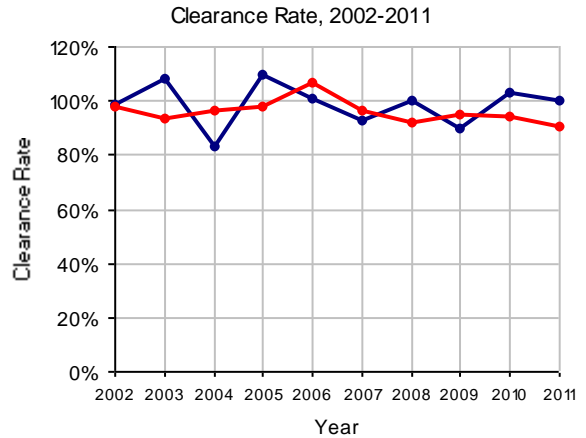
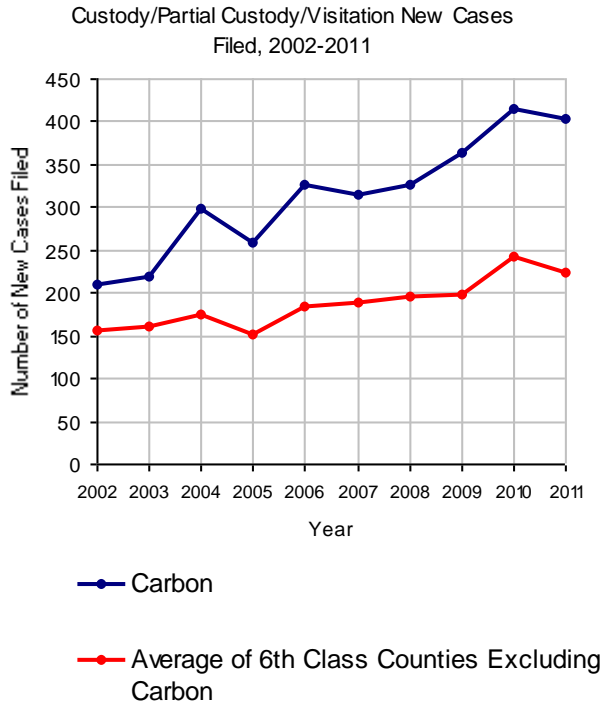
Judge	223	55.3%
Non-Judicial Officer	155	38.5%
Other	25	6.2%

Cases Processed

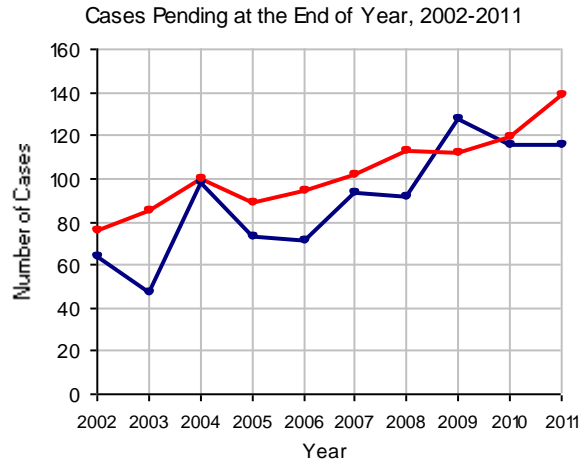
403 100.0%

Cases Pending 12/31/2011

116

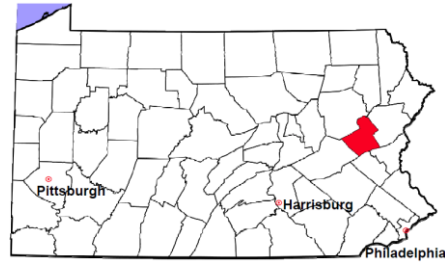


Note: Clearance Rate = Cases Processed / New Cases Filed



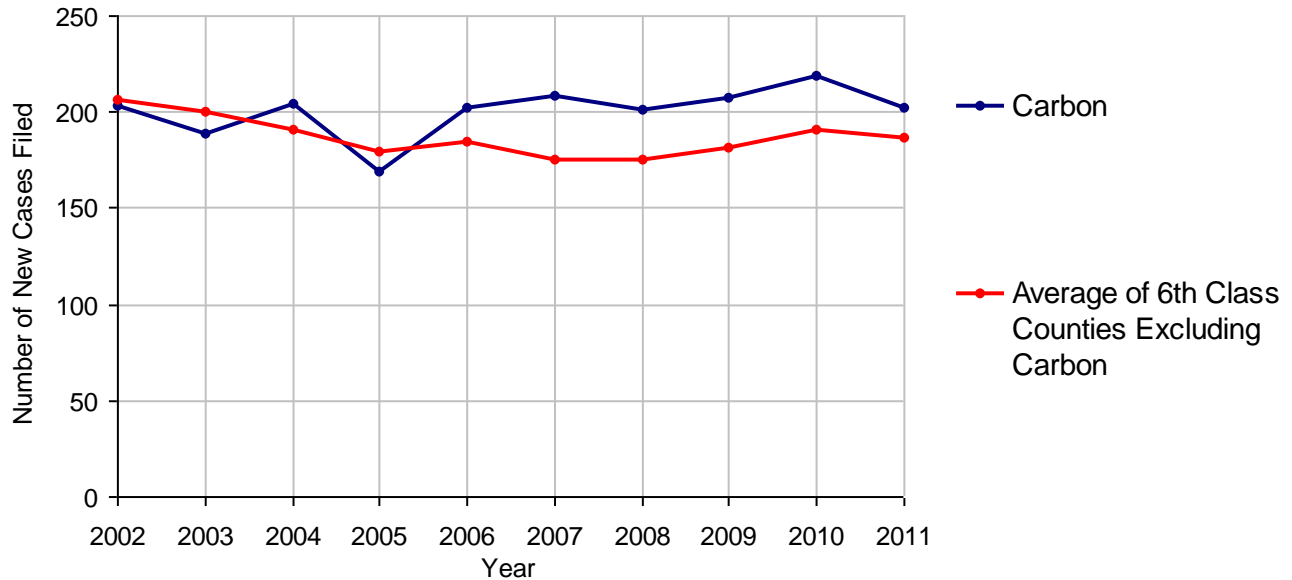
Carbon County

2011 Population Estimate: 65,154
 Class of County: 6th
 No. of Common Pleas Court Judgeships: 3



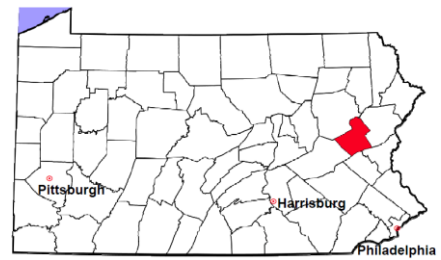
2011 Divorce	No. of Petitions	
Cases Pending 1/1/2011	228	
New Cases Filed in 2011	202	
Cases Available for Processing	430	
Processed By:		
Contested Before a Judge	0	
Contested Before a Master	26	12.6%
Uncontested	152	73.8%
Other	28	13.6%
Cases Processed	206	100.0%
Cases Pending 12/31/2011	224	

Divorce New Cases Filed, 2002-2011



Carbon County

2011 Population Estimate: 65,154
 Class of County: 6th
 No. of Common Pleas Court Judgeships: 3



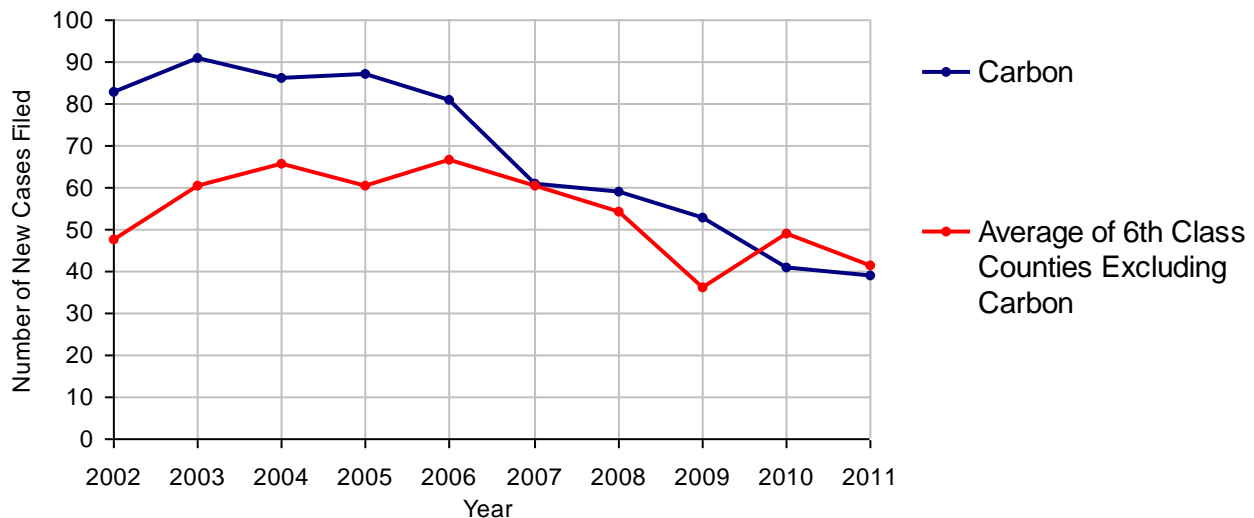
2011 Juvenile Dependency - Active Dependent Inventory



	Abuse/ Neglect	Status Offenses	Total
Cases Pending 1/1/2011	1	0	1
New Petitions Filed in 2011	26	13	39
Other	0	0	0
Total Petitions Available for Processing	27	13	40
Processed by:			
Adjudicated Dependent			
Judge	21	8	29
Master	0	0	0
Adjudicated NOT Dependent			
Judge	2	1	3
Master	0	0	0
Withdrawn/Dismissed/Inactive	3	2	5
Other	0	0	0
Total Petitions Processed	26	11	37
Cases Pending 12/31/2011	1	2	3

Data provided by CPCMS

Abuse/Neglect and Status Offenses New Cases Filed, 2002-2011



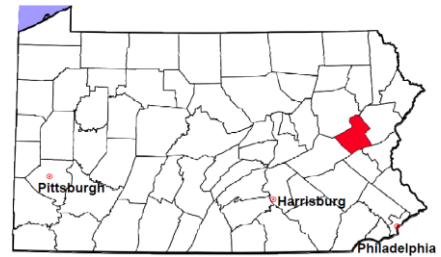
Note: Dependency data for 2002-2010 were collected manually. Dependency data for 2011 were provided by CPCMS.

Carbon County

2011 Population Estimate: 65,154

Class of County: 6th

No. of Common Pleas Court Judgeships: 3



2011 Juvenile Dependency - Adjudicated Dependent Inventory

	Abuse/ Neglect	Status Offenses	Total	
Cases Pending 1/1/2011	48	11	59	
New Adjudicated Dependent Cases	21	8	29	
Other	0	0	0	
Total Adjudicated Dependent Cases	69	19	88	
<u>Court Supervision Terminated:</u>				
Family Reunification	4	6	10	21.7%
Adoption	4	0	4	8.7%
Placement with a Relative/Guardian	21	7	28	60.9%
Aged Out	3	1	4	8.7%
Other Permanency Outcomes*	0	0	0	
Other**	0	0	0	
Total Adjudicated Dependent Cases Terminated	32	14	46	100.0%
Cases Pending 12/31/2011	37	5	42	

Data provided by CPCMS

* Other Permanency Outcomes include: adjudicated delinquent, death due to natural causes, emancipation, permanent living arrangement, and parent has come forward.

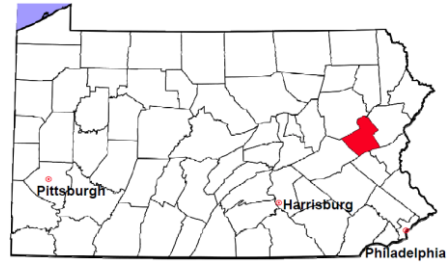
** Other includes cases where Court Supervision is terminated due to transfer out of jurisdiction, withdrawal and administrative closures.

Carbon County

2011 Population Estimate: 65,154

Class of County: 6th

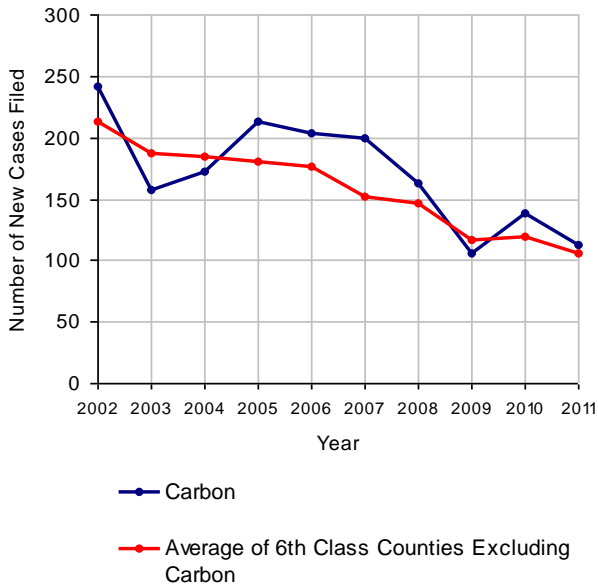
No. of Common Pleas Court Judgeships: 3



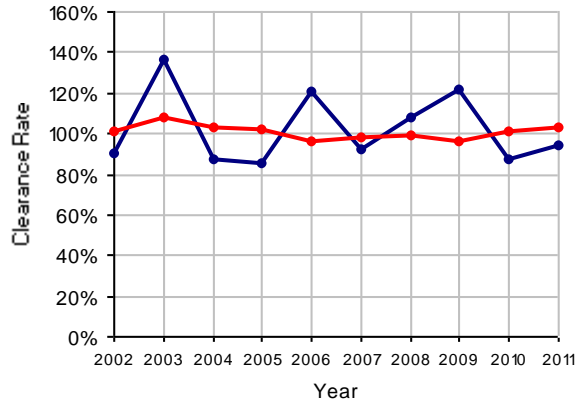
2011 Juvenile Delinquency

	No. of Cases
Cases Pending 1/1/2011	52
New Cases Filed in 2011	112
Cases Available for Processing	164
Processed By:	
Judge	36 34.0%
Non-Judicial Officer	41 38.7%
Other	29 27.4%
Cases Processed	106 100.0%
Cases Pending 12/31/2011	58

Juvenile Delinquency New Cases Filed, 2002-2011

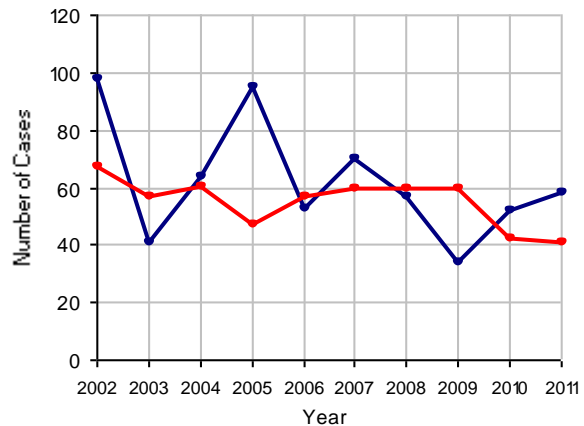


Clearance Rate, 2002-2011



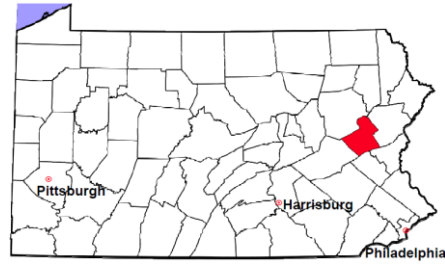
Note: Clearance Rate = Cases Processed / New Cases Filed

Cases Pending at the End of Year, 2002-2011



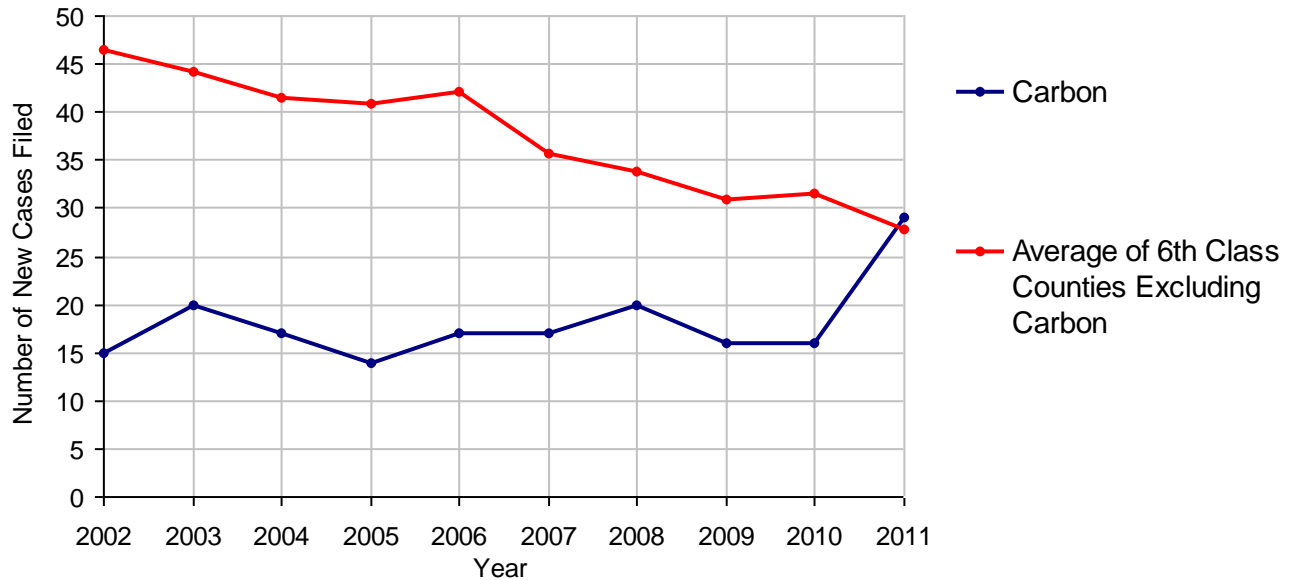
Carbon County

2011 Population Estimate: 65,154
 Class of County: 6th
 No. of Common Pleas Court Judgeships: 3



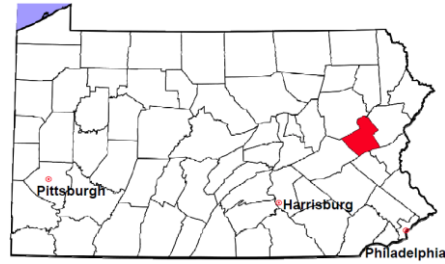
2011 Accounts	No. of Cases	
Cases Pending 1/1/2011	8	
New Cases Filed in 2011	29	
Cases Available for Processing	37	
Processed By:		
Contested before a Judge	0	
Contested before a Non-judicial Officer	0	
Uncontested	25	100.0%
Other	0	
Cases Processed	25	100.0%
Cases Pending 12/31/2011	12	

Accounts New Cases Filed, 2002-2011



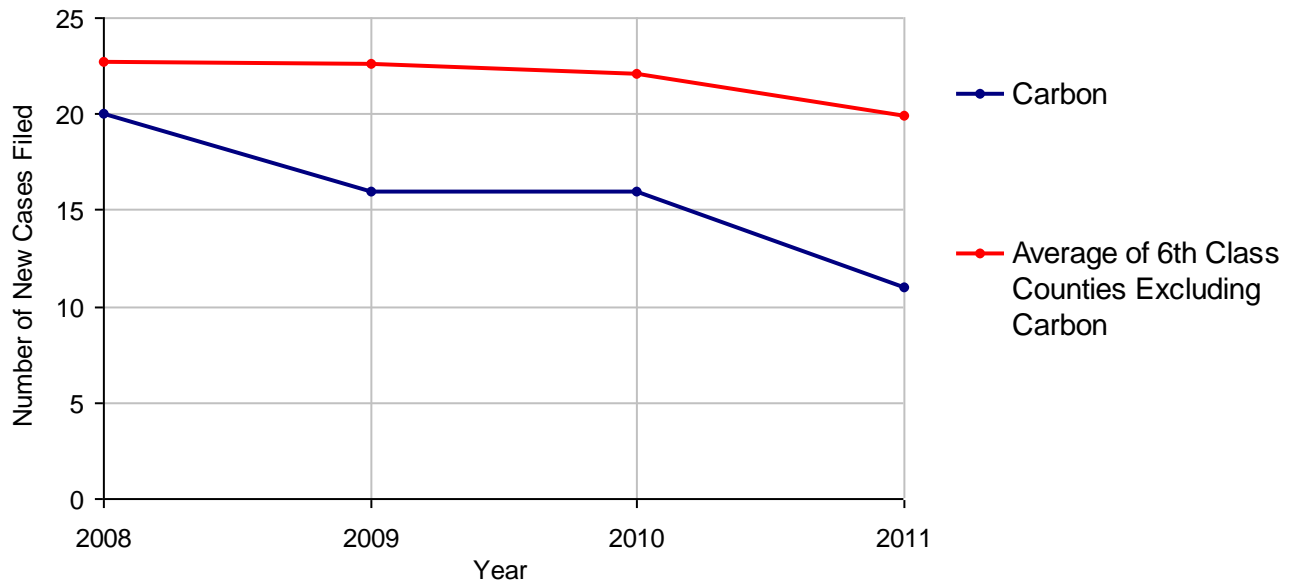
Carbon County

2011 Population Estimate: 65,154
 Class of County: 6th
 No. of Common Pleas Court Judgeships: 3



2011 Adoptions		No. of Cases	
Cases Pending 1/1/2011		6	
New Cases Filed in 2011		11	
Cases Available for Processing		17	
Processed By:			
Contested before a Judge	Granted	0	
	Denied	0	
Uncontested	Granted	9	69.2%
	Denied	2	15.4%
Other		2	15.4%
Cases Processed		13	100.0%
Cases Pending 12/31/2011		4	

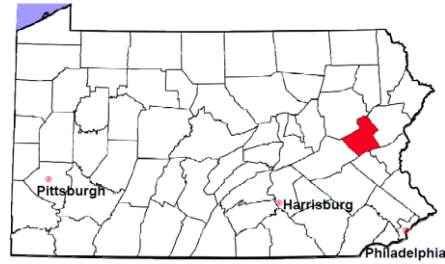
Adoptions New Cases Filed, 2008-2011



Note: Prior to 2008, each petition was counted as one new case, regardless of the number of children listed on the petition. Starting in 2008, each child listed on a petition is counted as a separate case. Therefore, statistics for the years since 2008 should not be compared to those for the years prior to 2008.

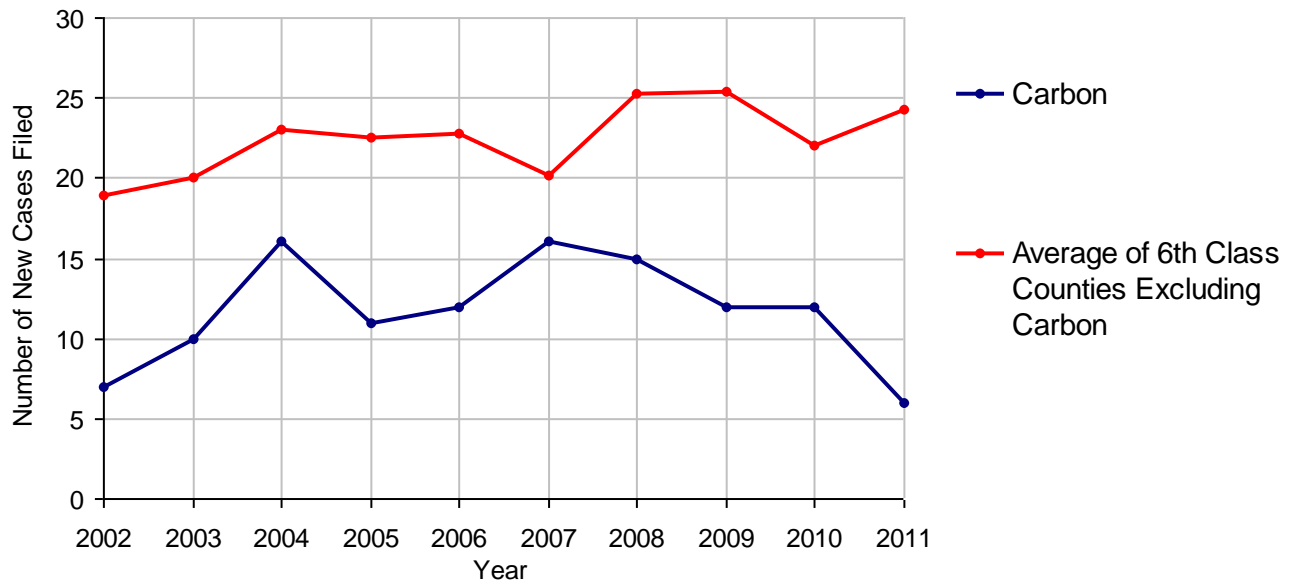
Carbon County

2011 Population Estimate: 65,154
 Class of County: 6th
 No. of Common Pleas Court Judgeships: 3



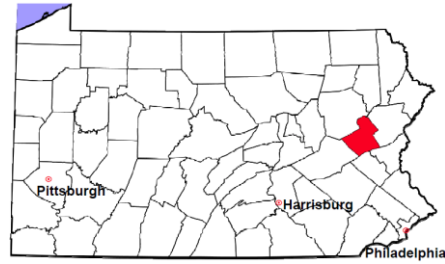
2011 Relinquishments/Terminations	No. of Cases	
Cases Pending 1/1/2011	3	
New Cases Filed in 2011	6	
Cases Available for Processing	9	
Processed By:		
Contested before a Judge	1	14.3%
Uncontested	4	57.1%
Other	2	28.6%
Cases Processed	7	100.0%
Cases Pending 12/31/2011	2	

Relinquishments/Terminations New Cases Filed, 2002-2011



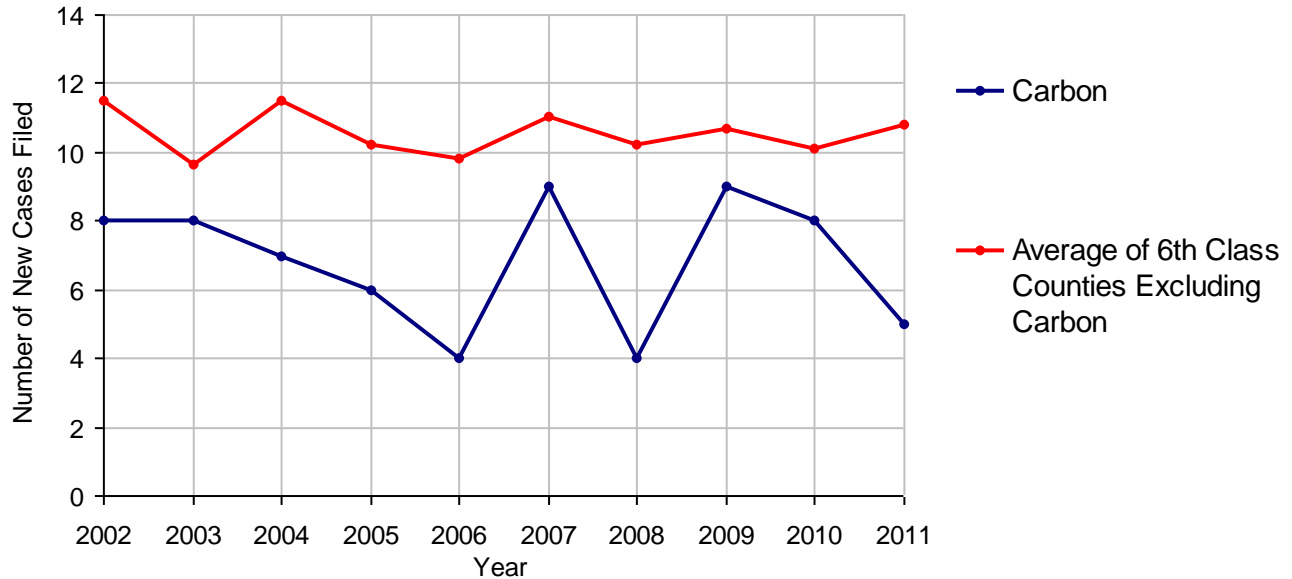
Carbon County

2011 Population Estimate: 65,154
 Class of County: 6th
 No. of Common Pleas Court Judgeships: 3



2011 Appointment of Guardians		No. of Cases
Cases Pending 1/1/2011		3
New Cases Filed in 2011		5
Cases Available for Processing		8
Processed By:		
Contested before a Judge		0
Uncontested	6	75.0%
Other	2	25.0%
Cases Processed	8	100.0%
Cases Pending 12/31/2011		0

Appointment of Guardians New Cases Filed, 2002-2011

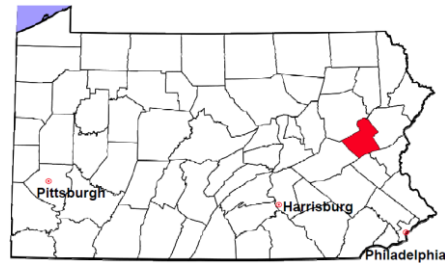


Carbon County

2011 Population Estimate: 65,154

Class of County: 6th

No. of Common Pleas Court Judgeships: 3



2011 Jury Activity and Performance Measures

A. Juror Days	1,189
B. Number Sent to Voir Dire	979
Voir Dire Attendance Rate (B/A * 100)	82.3%
C. Number of Jurors Selected	266
Juror Selection Rate (C/B * 100)	27.2%

Note: In mid-2011, AOPC began utilizing the National Center for State Courts' Jury Managers' Toolbox for collecting jury data. This has resulted in limited jury performance measures being reported for 2011. Additional data will be available in 2012.