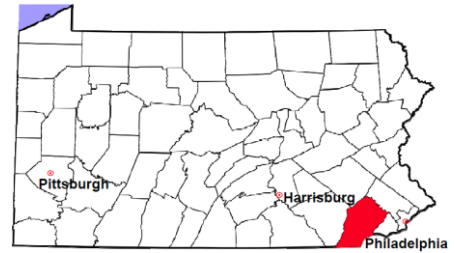


Chester County

2011 Population Estimate: 503,897
 Class of County: 3rd
 No. of Common Pleas Court Judgeships: 13



2011 Criminal	No. of Cases
---------------	--------------

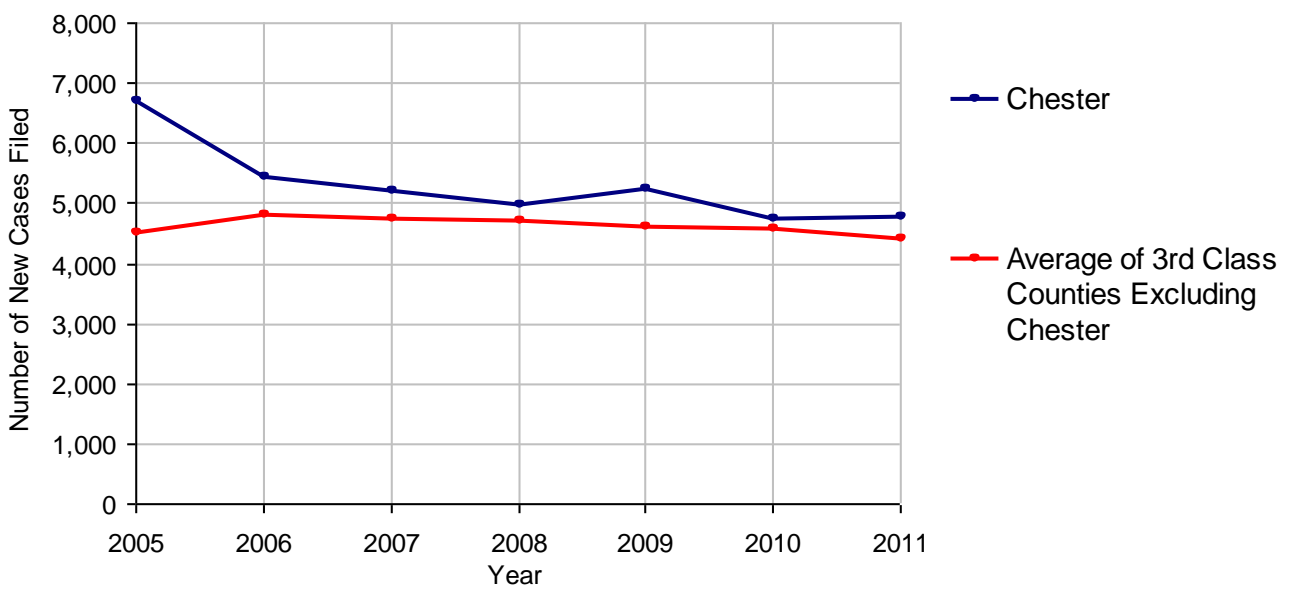
Cases Pending 1/1/2011	1,574
New Cases Filed in 2011	4,835
Reopened Cases	268
Cases Available for Disposition	6,677
Disposed by:	
Withdrawn/Dismissed	152 3.0%
ARD	1,226 24.0%
Guilty Plea	3,311 64.8%
Non-Jury Trial	45 0.9%
Jury Trial	61 1.2%
Inactive	181 3.5%
Other	131 2.6%
Total Cases Disposed	5,107 100.0%
Cases Pending 12/31/2011	1,570
Cases Awaiting Sentencing	106



Age of Pending Cases as of 12/31/2011		
0-60 Days	716	45.6%
61-120 Days	465	29.6%
121-180 Days	200	12.7%
181-240 Days	59	3.8%
241-300 Days	50	3.2%
301-360 Days	21	1.3%
Over 360 Days	59	3.8%
Total	1,570	100.0%

Data provided by CPCMS

Criminal New Cases Filed, 2005-2011

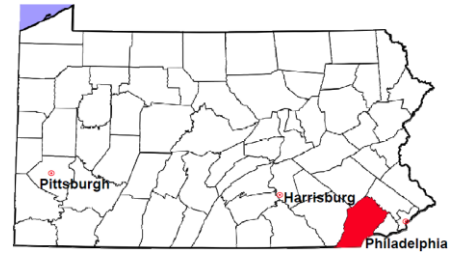


Chester County

2011 Population Estimate: 503,897

Class of County: 3rd

No. of Common Pleas Court Judgeships: 13



2011 Criminal - New Cases by Case Type



Case Type	Felony	Misdemeanor	Summary /Ungraded	Total
Person	340	417	14	771
Property	635	411	4	1,050
Drug	213	427	2	642
Weapon	35	17	0	52
Public Order	137	236	7	380
Motor Vehicle - DWI/DUI	0	1,911	5	1,916
Motor Vehicle - Other	0	19	3	22
Other	1	1	0	2
Total	1,361	3,439	35	4,835
	28.1%	71.1%	0.7%	100.0%

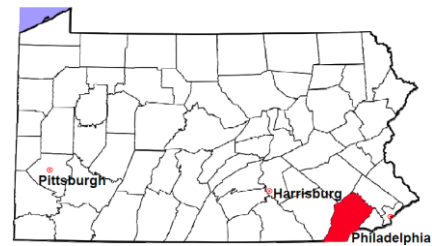
Data provided by CPCMS

Chester County

2011 Population Estimate: 503,897

Class of County: 3rd

No. of Common Pleas Court Judgeships: 13

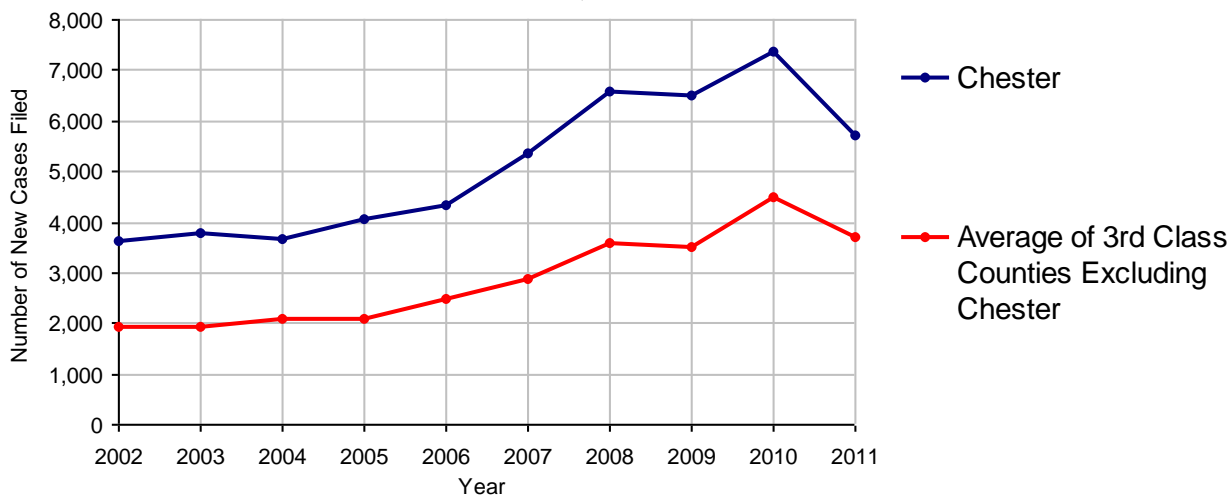


2011 Civil	Civil Action	Other	Total
Cases Pending 1/1/2011	4,339	1,840	6,179
Docketed Cases	3,696	2,003	5,699
Arbitration Appeals	116	30	146
Transferred In	33	1	34
Returned to Active	28	21	49
Cases Available for Processing	8,212	3,895	12,107
Disposed By:			
Default Judgments	1,772	880	2,652
Cases Decided by Arbitration Board	420	143	563
Dispositive Motions	1,071	510	1,581
Settlements	966	372	1,338
Moved to Inactive Status	153	90	243
Transferred/Withdrawn	382	167	549
Pa.R.J.A. 1901 Administrative Purge	29	25	54
Other	133	59	192
Jury Trial	31	8	39
Non-Jury Trial	15	2	17
Total Cases Disposed	4,972	2,256	7,228
Cases Pending 12/31/2011	3,240	1,639	4,879

Age of Pending Cases as of 12/31/2011 (Civil Action Only)

0-6 months	1,439	44.4%
7-12 months	525	16.2%
13-18 months	309	9.5%
19-24 months	187	5.8%
25-30 months	129	4.0%
31-36 months	124	3.8%
37-42 months	215	6.6%
43-48 months	163	5.0%
49-54 months	43	1.3%
55-60 months	28	0.9%
61-66 months	15	0.5%
67-72 months	8	0.2%
Over 72 months	55	1.7%
Total	3,240	100.0%

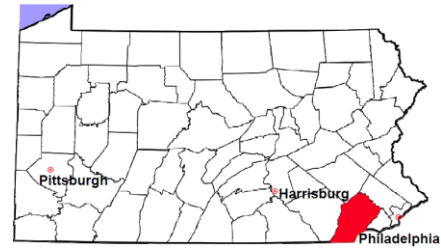
Docketed Cases, 2002-2011



Note: Prior to June 2010, docketed cases under the "Other" category were not reported. The reporting of these cases starting from June 2010 may contribute to an increase in docketed cases from 2009 to 2010.

Chester County

2011 Population Estimate: 503,897
 Class of County: 3rd
 No. of Common Pleas Court Judgeships: 13



2011 Civil - Docketed Cases Listed by Case Type

TORT (does not include mass tort)

Intentional	29
Malicious Prosecution	5
Motor Vehicle	374
Nuisance	0
Premise Liability	125
Product Liability	14
Slander/Libel/Defamation	9
Other	107

MASS TORT

Asbestos	0
Tobacco	0
Toxic Tort - DES	0
Toxic Tort - Implant	0
Toxic Waste	0
Other	0

PROFESSIONAL LIABILITY

Dental	2
Legal	8
Medical Malpractice	24
Other	7

CONTRACT

(does not include judgments)

Buyer Plaintiff	49
Debt Collection:	
Credit Card	1,577
Debt Collection: Other	957
Employment Dispute:	
Discrimination	8
Employment Dispute: Other	24
Other	366

REAL PROPERTY

Ejectment*	120
Eminent Domain/ Condemnation*	11
Ground Rent	2
Landlord/Tenant Dispute	9
Mortgage Forclosure:	
Residential*	847
Commercial*	13
Partition of Real Property*	6
Quiet Title*	32
Other*	34

CIVIL APPEALS

Administrative Agencies

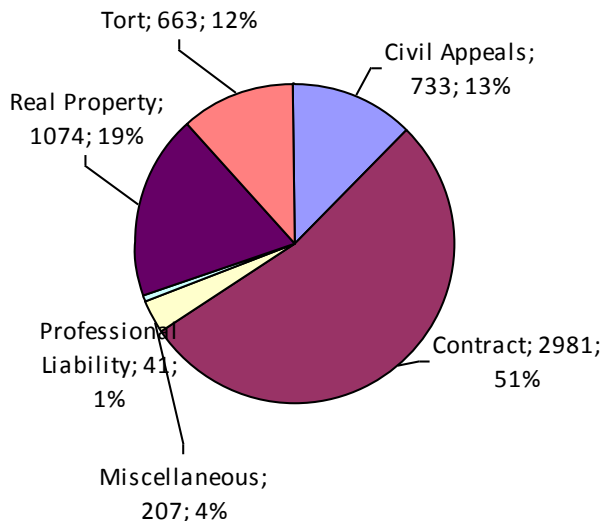
Board of Assessment*	80
Board of Elections*	13
Dept. of Transportation*	194
Zoning Board*	23
Statutory Appeal - Other*	101
Other*	322

MISCELLANEOUS

Common Law/ Statutory Arbitration*	5
Declaratory Judgment*	23
Mandamus*	1
Non-Domestic Relations Restraining Order*	1
Quo Warranto*	0
Replevin*	49
Other*	128

TOTAL DOCKETED CASES:
5,699

* Civil Other



Of the Docketed Cases:

Pro Se Filings:	201	3.5%
Class Action Suits:	19	0.3%
MDJ Appeals:	407	7.1%

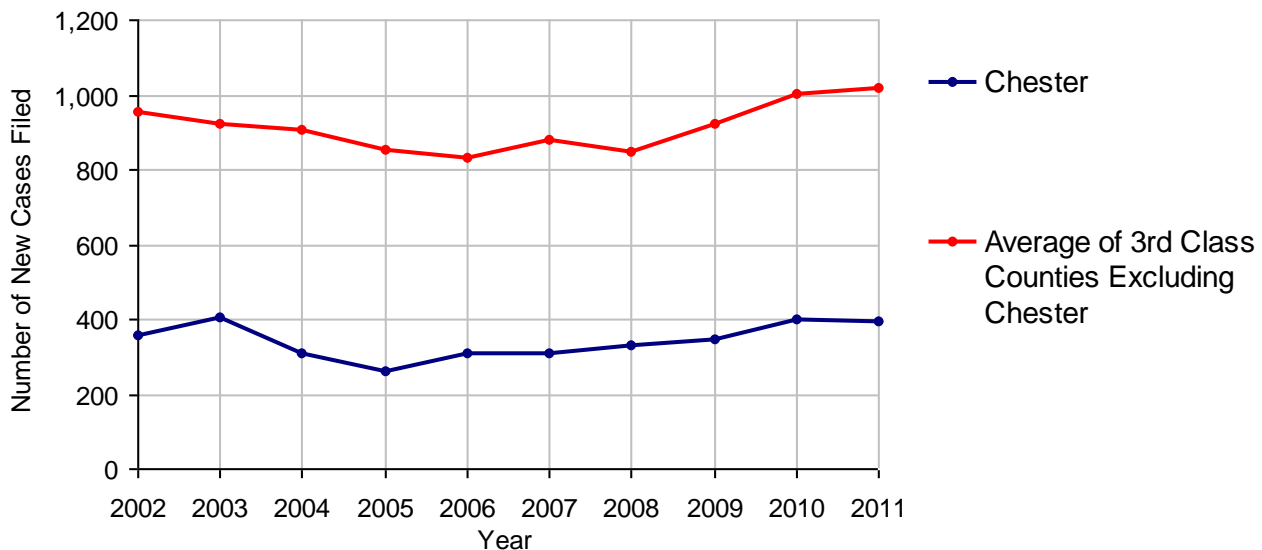
Chester County

2011 Population Estimate: 503,897
 Class of County: 3rd
 No. of Common Pleas Court Judgeships: 13



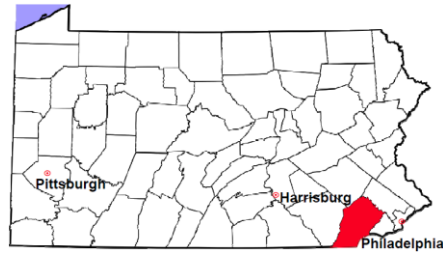
2011 Protection From Abuse	No. of Petitions
Cases Pending 1/1/2011	41
New Cases Filed in 2011	395
<i>Of these, Petitions Requesting Temporary Orders: 395 (100.0%)</i>	
<i>Temporary Orders DENIED: 22 (5.6%), Temporary Orders GRANTED: 373 (94.4%)</i>	
Cases Available for Processing	436
Processed By:	
Temporary Order DENIED After Ex Parte Hearing and No Evidentiary Hearing Scheduled	8 2.0%
Temporary Order DISMISSED After Evidentiary Hearing and No Final Order Entered	46 11.2%
Final Order DENIED After Evidentiary Hearing Before a Judge	21 5.1%
Final Order GRANTED After Evidentiary Hearing Before a Judge	54 13.2%
Plaintiff Did Not Appear For Evidentiary Hearing	19 4.6%
Final Order by STIPULATION OR AGREEMENT Between the Parties	128 31.3%
Petition WITHDRAWN by Plaintiff	133 32.5%
TRANSFERRED to Another Jurisdiction	0
DECEASED Party	0
Other	0
Cases Processed	409 100.0%
Cases Pending 12/31/2011	27

PFA New Cases Filed, 2002-2011

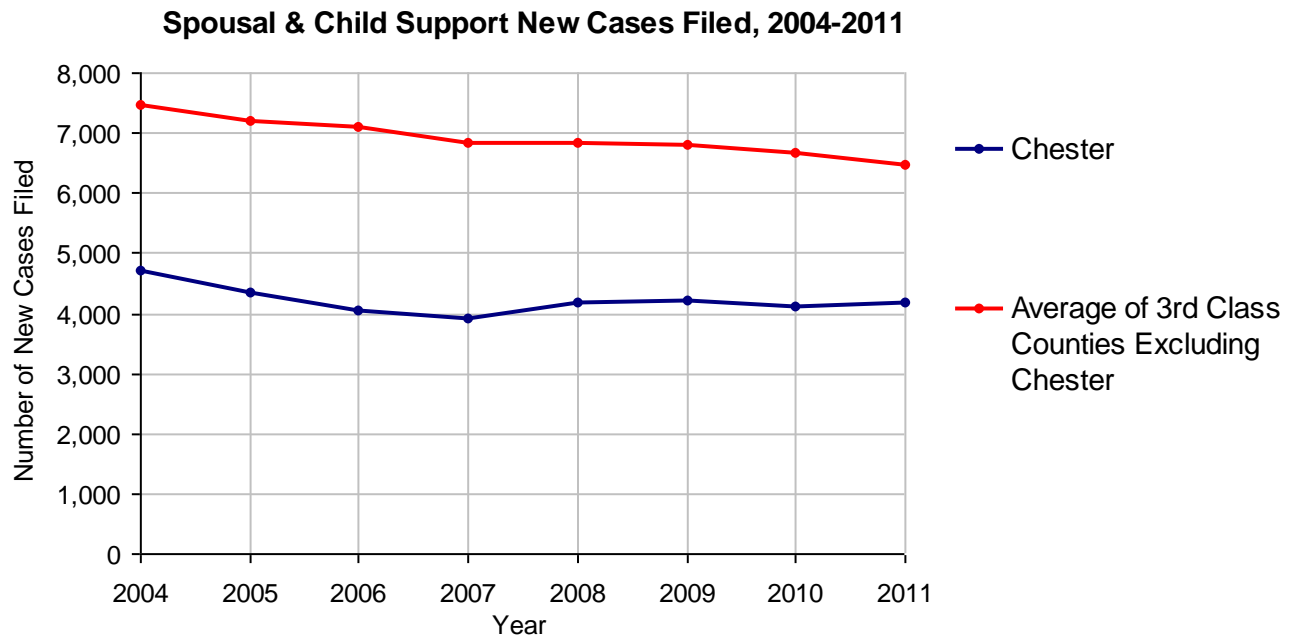


Chester County

2011 Population Estimate: 503,897
 Class of County: 3rd
 No. of Common Pleas Court Judgeships: 13



2011 Spousal & Child Support	No. of Petitions	
Cases Pending 1/1/2011	1,301	
New Cases Filed in 2011	4,193	
Dockets Transferred In (+)	66	
Dockets Transferred Out (-)	97	
Cases Available for Processing	5,463	
Processed By:		
Judge	218	5.1%
Intake Officer	3,780	89.0%
Hearing Officer	249	5.9%
Other	0	
Cases Processed	4,247	100.0%
Cases Pending 12/31/2011	1,216	

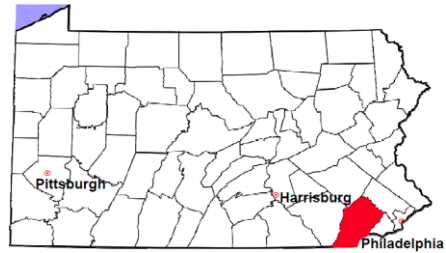


Chester County

2011 Population Estimate: 503,897

Class of County: 3rd

No. of Common Pleas Court Judgeships: 13



2011 Custody/Partial Custody/Visitation

No. of
Petitions

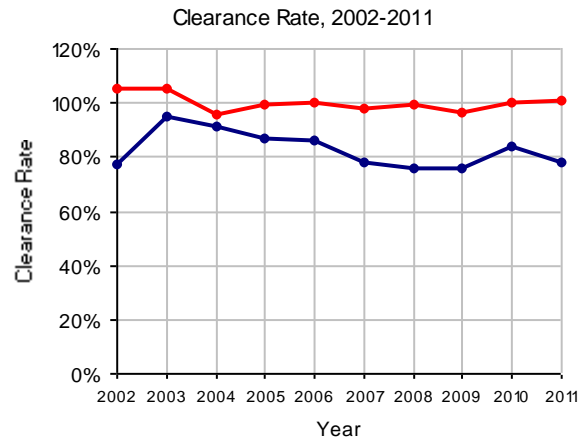
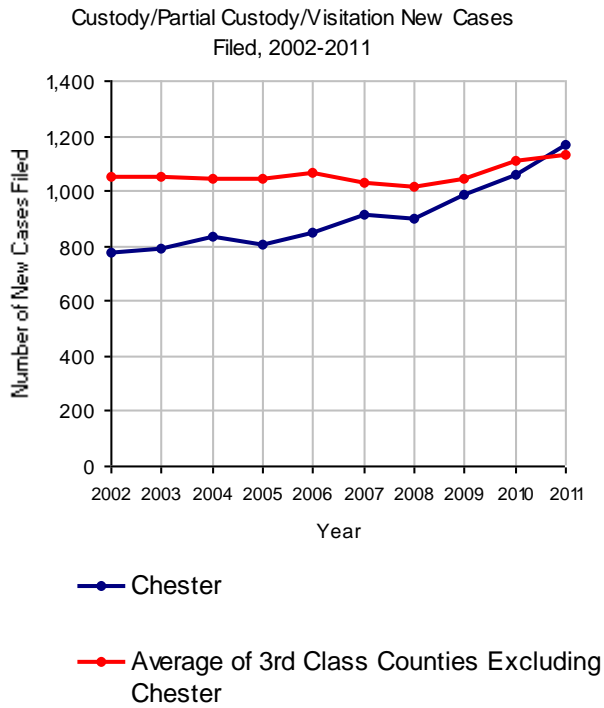
Cases Pending 1/1/2011	1,723
New Cases Filed in 2011	1,169
Cases Available for Processing	2,892

Processed By:

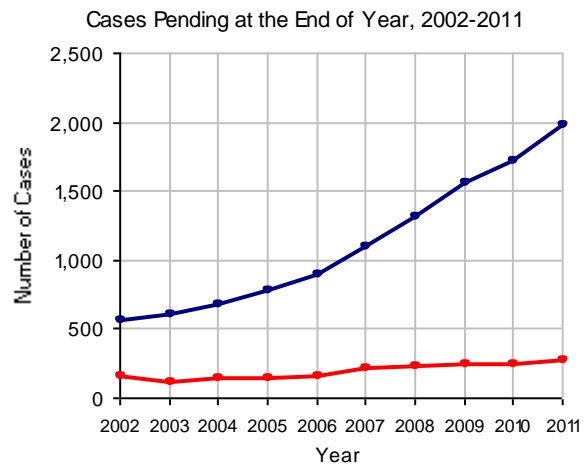
Judge	59	6.4%
Non-Judicial Officer	522	57.0%
Other	335	36.6%
Cases Processed	916	100.0%

Cases Pending 12/31/2011

1,976

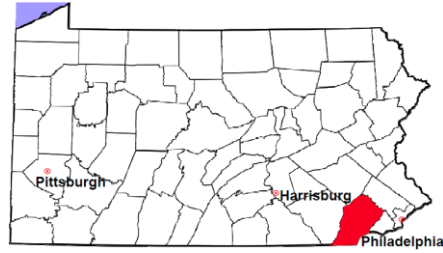


Note: Clearance Rate = Cases Processed / New Cases Filed



Chester County

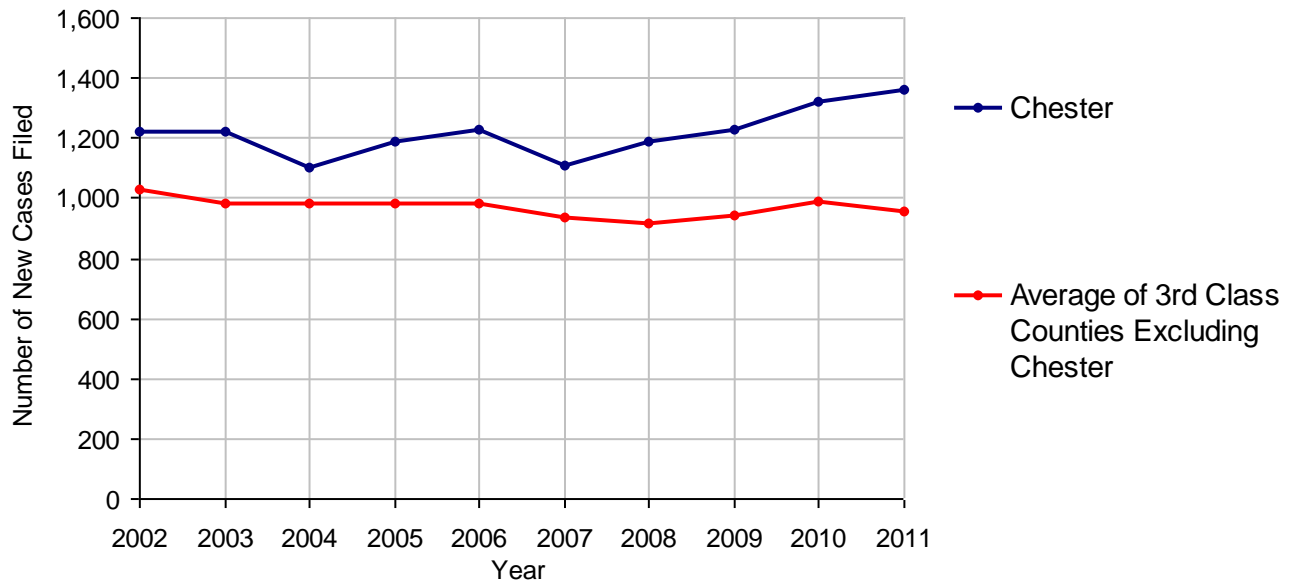
2011 Population Estimate: 503,897
 Class of County: 3rd
 No. of Common Pleas Court Judgeships: 13



2011 Divorce	No. of Petitions *	
Cases Pending 1/1/2011	1,879	
New Cases Filed in 2011	1,364	
Cases Available for Processing	3,243	
Processed By:		
Contested Before a Judge	63	5.3%
Contested Before a Master	216	18.3%
Uncontested	845	71.7%
Other	55	4.7%
Cases Processed	1,179	100.0%
Cases Pending 12/31/2011	2,064	

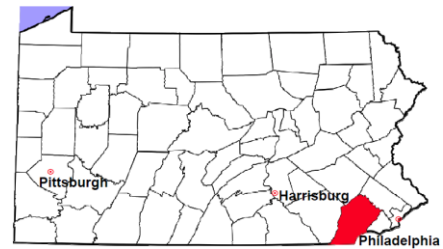
* Pending inventory is inflated due to a large number of cases awaiting finalization of equitable distribution.

Divorce New Cases Filed, 2002-2011



Chester County

2011 Population Estimate: 503,897
 Class of County: 3rd
 No. of Common Pleas Court Judgeships: 13



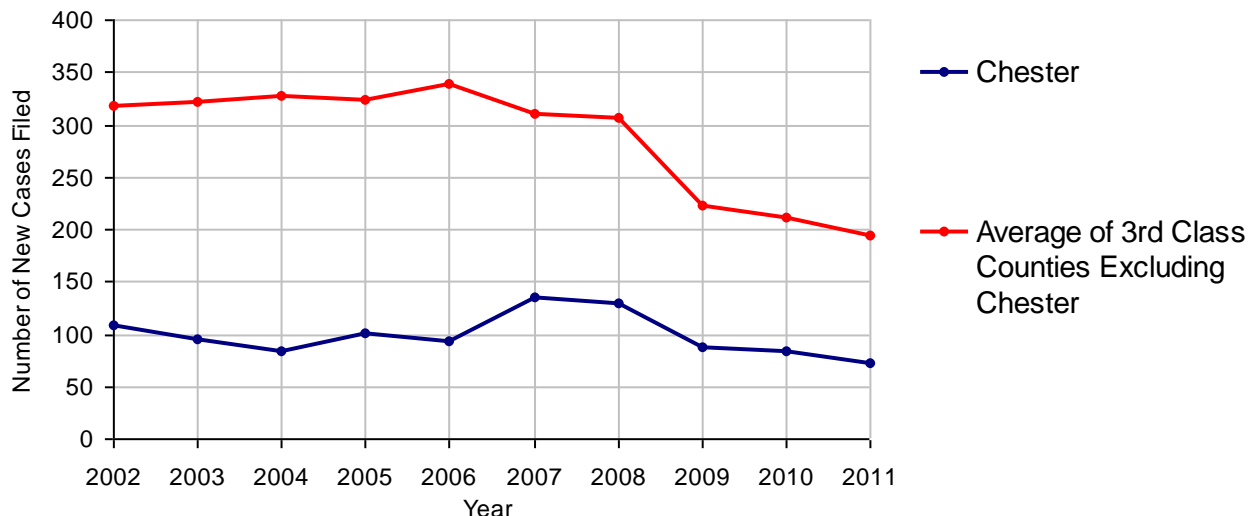
2011 Juvenile Dependency - Active Dependent Inventory



	Abuse/ Neglect	Status Offenses	Total
Cases Pending 1/1/2011	4	2	6
New Petitions Filed in 2011	65	7	72
Other	0	0	0
Total Petitions Available for Processing	69	9	78
Processed by:			
Adjudicated Dependent			
Judge	2	0	2
Master	53	9	62
Adjudicated NOT Dependent			
Judge	0	0	0
Master	4	0	4
Withdrawn/Dismissed/Inactive	0	0	0
Other	6	0	6
Total Petitions Processed	65	9	74
Cases Pending 12/31/2011	4	0	4

Data provided by CPCMS

Abuse/Neglect and Status Offenses New Cases Filed, 2002-2011



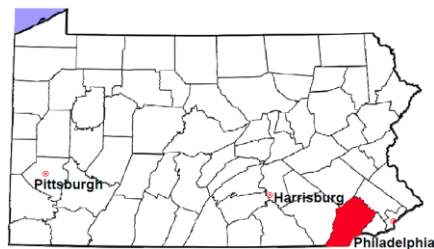
Note: Dependency data for 2002-2010 were collected manually. Dependency data for 2011 were provided by CPCMS.

Chester County

2011 Population Estimate: 503,897

Class of County: 3rd

No. of Common Pleas Court Judgeships: 13



2011 Juvenile Dependency - Adjudicated Dependent Inventory



	Abuse/ Neglect	Status Offenses	Total	
Cases Pending 1/1/2011	172	20	192	
New Adjudicated Dependent Cases	55	9	64	
Other	11	0	11	
Total Adjudicated Dependent Cases	238	29	267	
<u>Court Supervision Terminated:</u>				
Family Reunification	1	1	2	2.6%
Adoption	9	0	9	11.5%
Placement with a Relative/Guardian	37	5	42	53.8%
Aged Out	8	2	10	12.8%
Other Permanency Outcomes*	3	2	5	6.4%
Other**	10	0	10	12.8%
Total Adjudicated Dependent Cases Terminated	68	10	78	100.0%
Cases Pending 12/31/2011	170	19	189	

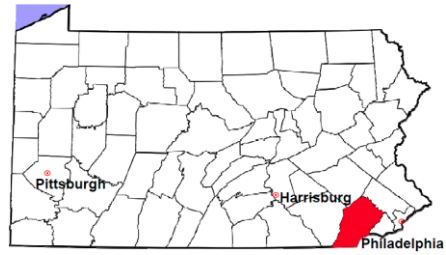
Data provided by CPCMS

* Other Permanency Outcomes include: adjudicated delinquent, death due to natural causes, emancipation, permanent living arrangement, and parent has come forward.

** Other includes cases where Court Supervision is terminated due to transfer out of jurisdiction, withdrawal and administrative closures.

Chester County

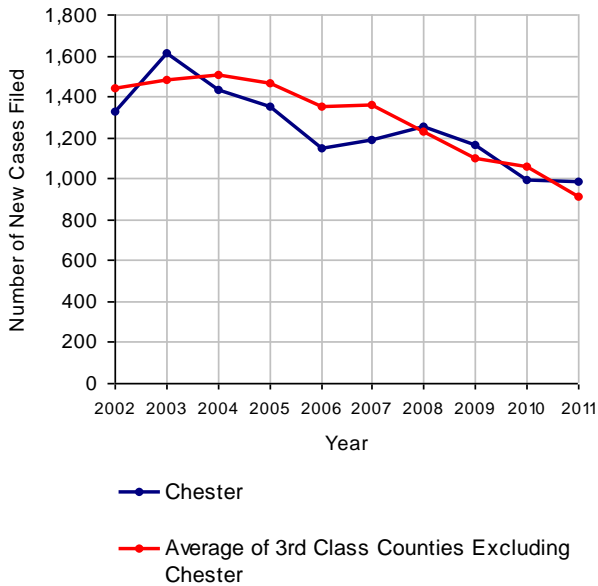
2011 Population Estimate: 503,897
 Class of County: 3rd
 No. of Common Pleas Court Judgeships: 13



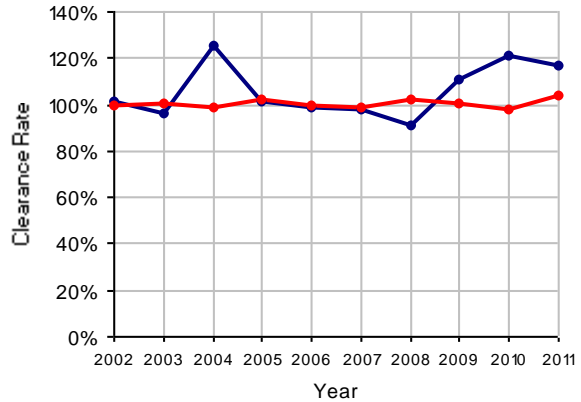
2011 Juvenile Delinquency

	No. of Cases
Cases Pending 1/1/2011	819
New Cases Filed in 2011	982
Cases Available for Processing	1,801
Processed By:	
Judge	221 19.2%
Non-Judicial Officer	780 67.9%
Other	148 12.9%
Cases Processed	1,149 100.0%
Cases Pending 12/31/2011	652

Juvenile Delinquency New Cases Filed, 2002-2011

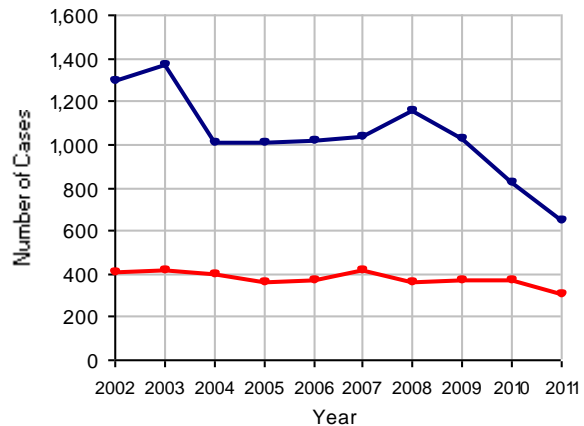


Clearance Rate, 2002-2011



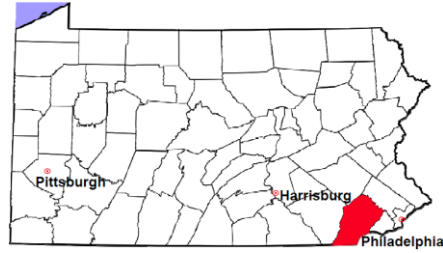
Note: Clearance Rate = Cases Processed / New Cases Filed

Cases Pending at the End of Year, 2002-2011



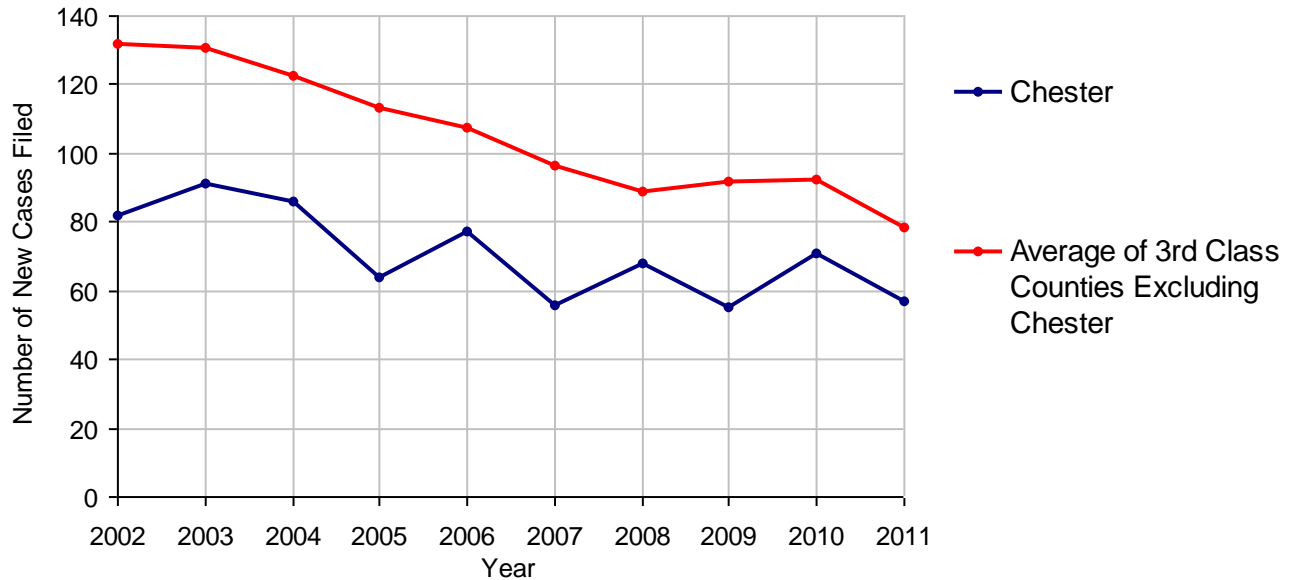
Chester County

2011 Population Estimate: 503,897
 Class of County: 3rd
 No. of Common Pleas Court Judgeships: 13



2011 Accounts	No. of Cases	
Cases Pending 1/1/2011	25	
New Cases Filed in 2011	57	
Cases Available for Processing	82	
Processed By:		
Contested before a Judge	19	32.8%
Contested before a Non-judicial Officer	0	
Uncontested	33	56.9%
Other	6	10.3%
Cases Processed	58	100.0%
Cases Pending 12/31/2011	24	

Accounts New Cases Filed, 2002-2011

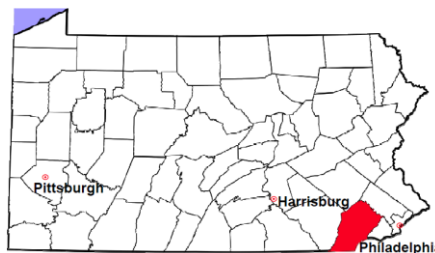


Chester County

2011 Population Estimate: 503,897

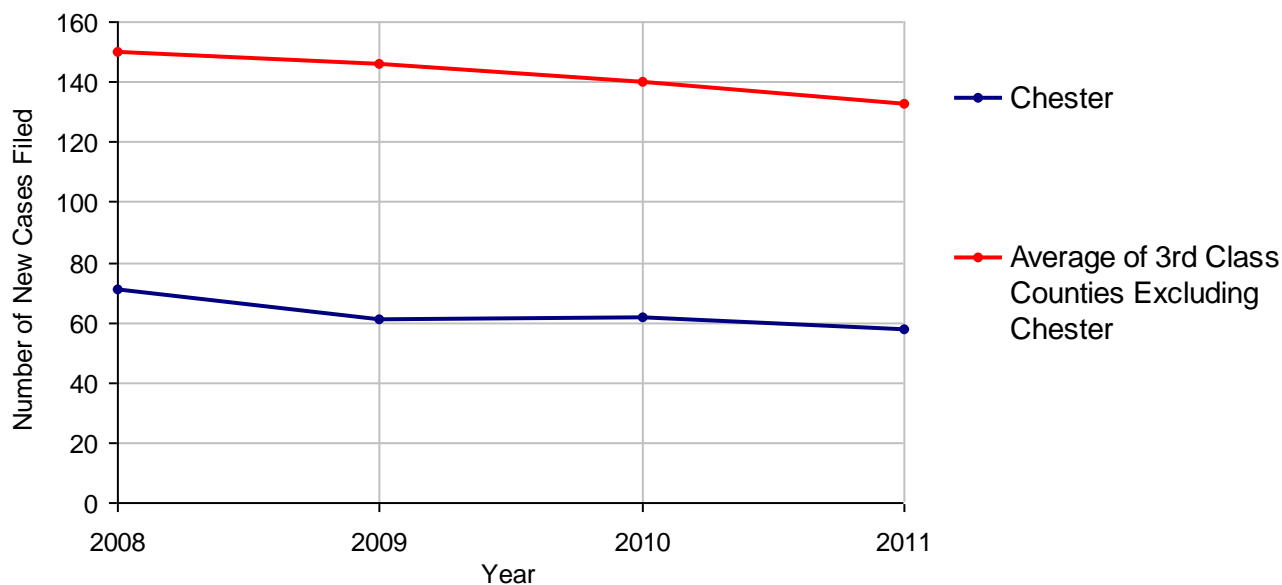
Class of County: 3rd

No. of Common Pleas Court Judgeships: 13



2011 Adoptions		No. of Cases	
Cases Pending 1/1/2011		20	
New Cases Filed in 2011		58	
Cases Available for Processing		78	
Processed By:			
Contested before a Judge	Granted	1	1.5%
	Denied	0	
Uncontested	Granted	63	94.0%
	Denied	0	
Other		3	4.5%
Cases Processed		67	100.0%
Cases Pending 12/31/2011		11	

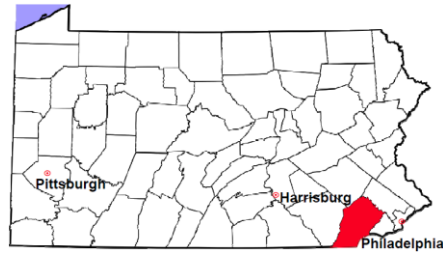
Adoptions New Cases Filed, 2008-2011



Note: Prior to 2008, each petition was counted as one new case, regardless of the number of children listed on the petition. Starting in 2008, each child listed on a petition is counted as a separate case. Therefore, statistics for the years since 2008 should not be compared to those for the years prior to 2008.

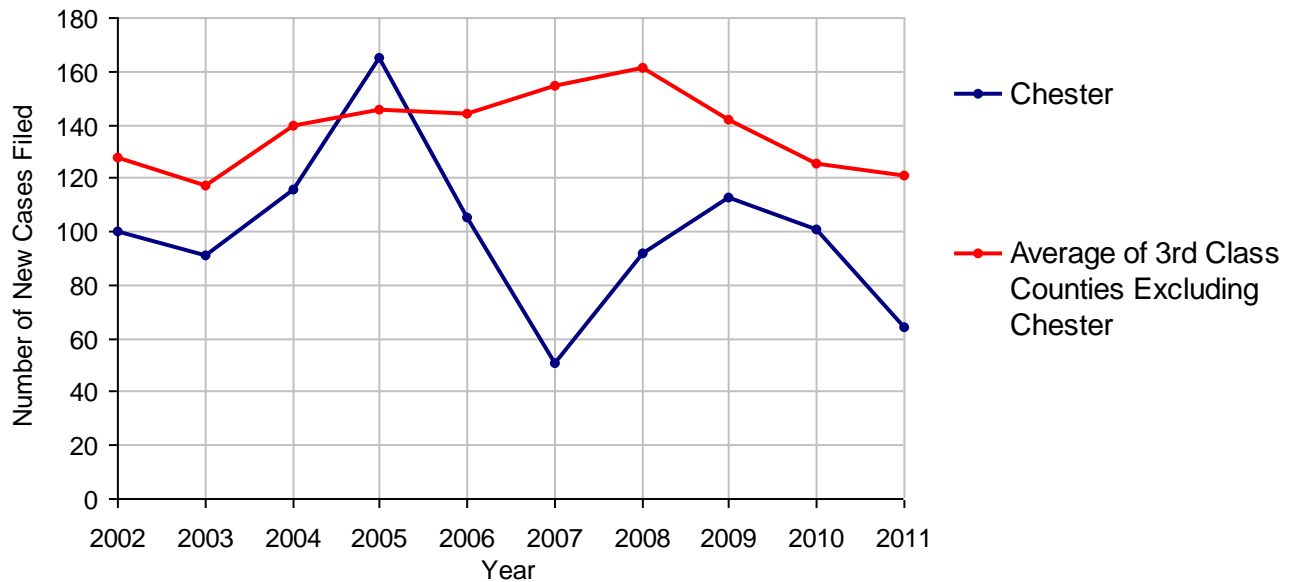
Chester County

2011 Population Estimate: 503,897
 Class of County: 3rd
 No. of Common Pleas Court Judgeships: 13



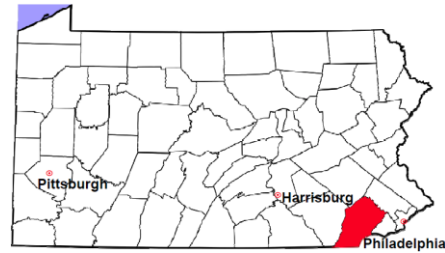
2011 Relinquishments/Terminations	No. of Cases	
Cases Pending 1/1/2011	61	
New Cases Filed in 2011	64	
Cases Available for Processing	125	
Processed By:		
Contested before a Judge	57	53.3%
Uncontested	41	38.3%
Other	9	8.4%
Cases Processed	107	100.0%
Cases Pending 12/31/2011	18	

Relinquishments/Terminations New Cases Filed, 2002-2011



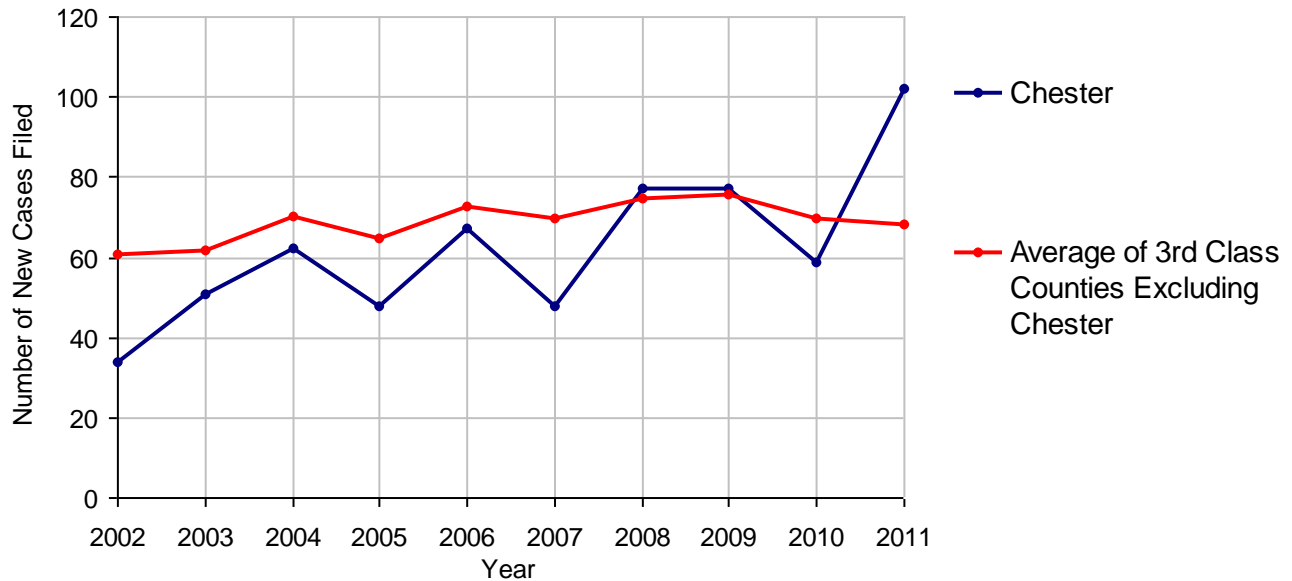
Chester County

2011 Population Estimate: 503,897
 Class of County: 3rd
 No. of Common Pleas Court Judgeships: 13



2011 Appointment of Guardians		No. of Cases
Cases Pending 1/1/2011		17
New Cases Filed in 2011		102
Cases Available for Processing		119
Processed By:		
Contested before a Judge	5	5.2%
Uncontested	72	74.2%
Other	20	20.6%
Cases Processed	97	100.0%
Cases Pending 12/31/2011		22

Appointment of Guardians New Cases Filed, 2002-2011

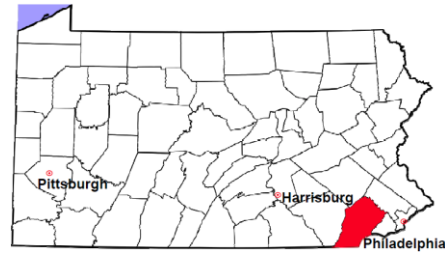


Chester County

2011 Population Estimate: 503,897

Class of County: 3rd

No. of Common Pleas Court Judgeships: 13



2011 Jury Activity and Performance Measures

A. Juror Days	5,633
B. Number Sent to Voir Dire	4,566
Voir Dire Attendance Rate (B/A * 100)	81.1%
C. Number of Jurors Selected	1,233
Juror Selection Rate (C/B * 100)	27.0%

Note: In mid-2011, AOPC began utilizing the National Center for State Courts' Jury Managers' Toolbox for collecting jury data. This has resulted in limited jury performance measures being reported for 2011. Additional data will be available in 2012.