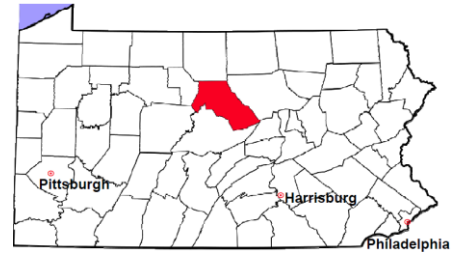


Clinton County

2011 Population Estimate: 39,208

Class of County: 6th

No. of Common Pleas Court Judgeships: 2



2011 Criminal	No. of Cases
---------------	--------------

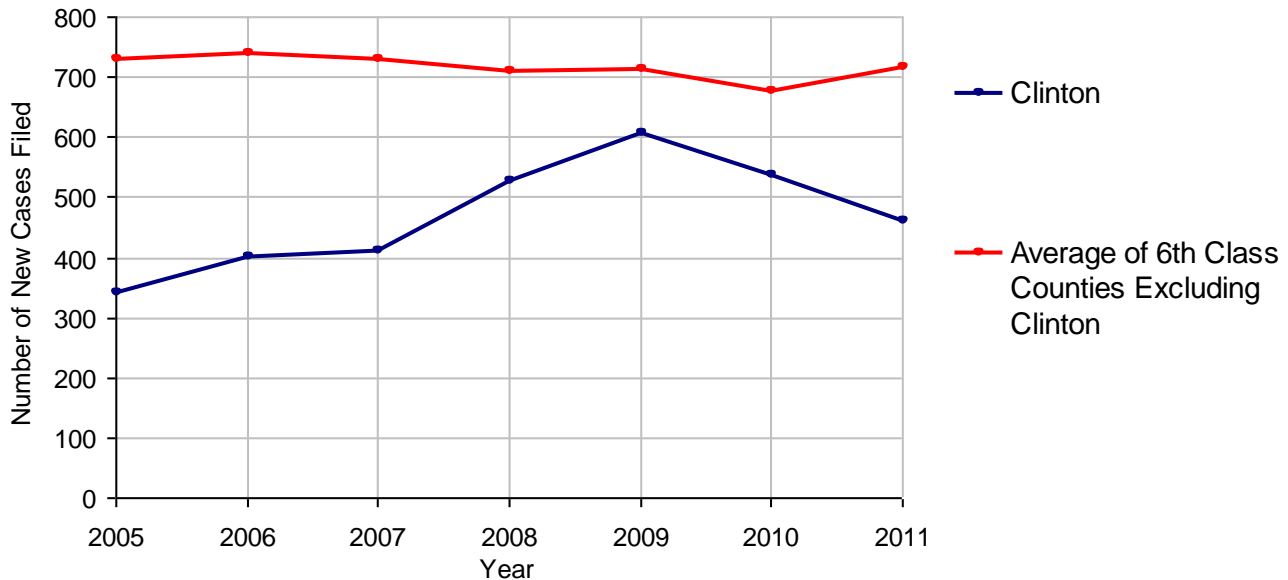
Cases Pending 1/1/2011	130
New Cases Filed in 2011	463
Reopened Cases	18
Cases Available for Disposition	611
Disposed by:	
Withdrawn/Dismissed	8 1.6%
ARD	119 24.0%
Guilty Plea	281 56.8%
Non-Jury Trial	34 6.9%
Jury Trial	2 0.4%
Inactive	8 1.6%
Other	43 8.7%
Total Cases Disposed	495 100.0%
Cases Pending 12/31/2011	116
Cases Awaiting Sentencing	28

Data provided by CPCMS



Age of Pending Cases as of 12/31/2011		
0-60 Days	75	64.7%
61-120 Days	19	16.4%
121-180 Days	10	8.6%
181-240 Days	2	1.7%
241-300 Days	2	1.7%
301-360 Days	0	
Over 360 Days	8	6.9%
Total	116	100.0%

Criminal New Cases Filed, 2005-2011

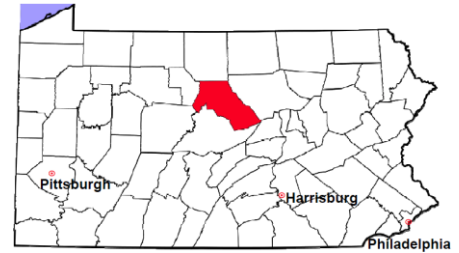


Clinton County

2011 Population Estimate: 39,208

Class of County: 6th

No. of Common Pleas Court Judgeships: 2



2011 Criminal - New Cases by Case Type



Case Type	Felony	Misdemeanor	Summary /Ungraded	Total
Person	23	37	0	60
Property	57	72	0	129
Drug	14	26	0	40
Weapon	4	0	0	4
Public Order	14	39	0	53
Motor Vehicle - DWI/DUI	0	176	0	176
Motor Vehicle - Other	0	1	0	1
Other	0	0	0	0
Total	112	351	0	463
	24.2%	75.8%		100.0%

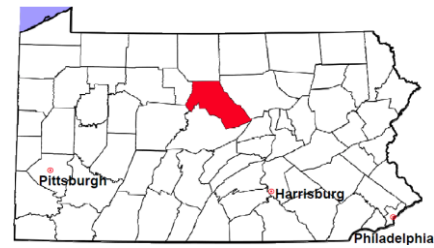
Data provided by CPCMS

Clinton County

2011 Population Estimate: 39,208

Class of County: 6th

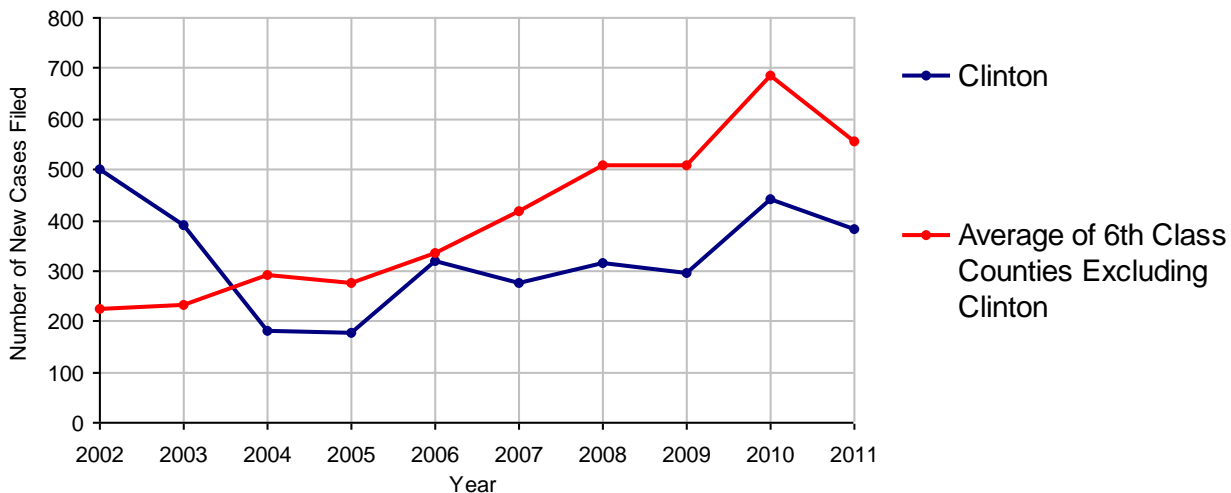
No. of Common Pleas Court Judgeships: 2



2011 Civil	Civil Action	Other	Total
Cases Pending 1/1/2011	179	178	357
Docketed Cases	235	149	384
Arbitration Appeals	0	0	0
Transferred In	0	0	0
Returned to Active	1	1	2
Cases Available for Processing	415	328	743
Disposed By:			
Default Judgments	2	0	2
Cases Decided by Arbitration Board	2	0	2
Dispositive Motions	0	0	0
Settlements	25	25	50
Moved to Inactive Status	0	0	0
Transferred/Withdrawn	4	2	6
Pa.R.J.A. 1901 Administrative Purge	29	17	46
Other	0	2	2
Jury Trial	1	0	1
Non-Jury Trial	15	3	18
Total Cases Disposed	78	49	127
Cases Pending 12/31/2011	337	279	616

Age of Pending Cases as of 12/31/2011 (Civil Action Only)		
0-6 months	117	34.7%
7-12 months	93	27.6%
13-18 months	125	37.1%
19-24 months	1	0.3%
25-30 months	1	0.3%
31-36 months	0	
37-42 months	0	
43-48 months	0	
49-54 months	0	
55-60 months	0	
61-66 months	0	
67-72 months	0	
Over 72 months	0	
Total	337	100.0%

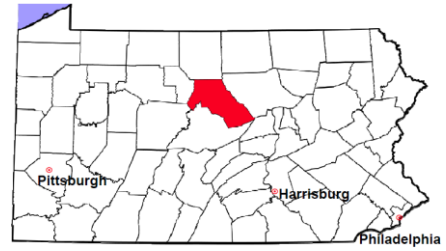
Docketed Cases, 2002-2011



Note: Prior to June 2010, docketed cases under the "Other" category were not reported. The reporting of these cases starting from June 2010 may contribute to an increase in docketed cases from 2009 to 2010.

Clinton County

2011 Population Estimate: 39,208
 Class of County: 6th
 No. of Common Pleas Court Judgeships: 2



2011 Civil - Docketed Cases Listed by Case Type

TORT (does not include mass tort)

Intentional	3
Malicious Prosecution	0
Motor Vehicle	20
Nuisance	0
Premise Liability	3
Product Liability	1
Slander/Libel/Defamation	0
Other	6

MASS TORT

Asbestos	0
Tobacco	0
Toxic Tort - DES	0
Toxic Tort - Implant	0
Toxic Waste	0
Other	0

PROFESSIONAL LIABILITY

Dental	0
Legal	0
Medical Malpractice	0
Other	0

CONTRACT

(does not include judgments)

Buyer Plaintiff	5
Debt Collection:	
Credit Card	94
Debt Collection: Other	60
Employment Dispute:	
Discrimination	0
Employment Dispute: Other	0
Other	32

REAL PROPERTY

Ejectment*	15
Eminent Domain/ Condemnation*	0
Ground Rent	0
Landlord/Tenant Dispute	11
Mortgage Forclosures:	
Residential*	56
Commercial*	4
Partition of Real Property*	2
Quiet Title*	4
Other*	10

CIVIL APPEALS

Administrative Agencies

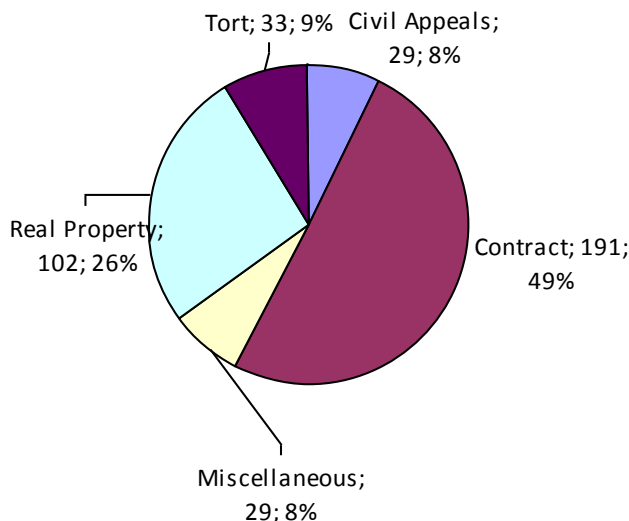
Board of Assessment*	2
Board of Elections*	0
Dept. of Transportation*	12
Zoning Board*	1
Statutory Appeal - Other*	0
Other*	14

MISCELLANEOUS

Common Law/ Statutory Arbitration*	0
Declaratory Judgment*	1
Mandamus*	2
Non-Domestic Relations Restraining Order*	0
Quo Warranto*	0
Replevin*	6
Other*	20

TOTAL DOCKETED CASES: 384

* Civil Other



Of the Docketed Cases:

Pro Se Filings:	8	2.1%
Class Action Suits:	0	
MDJ Appeals:	26	6.8%

Clinton County

2011 Population Estimate: 39,208
 Class of County: 6th
 No. of Common Pleas Court Judgeships: 2

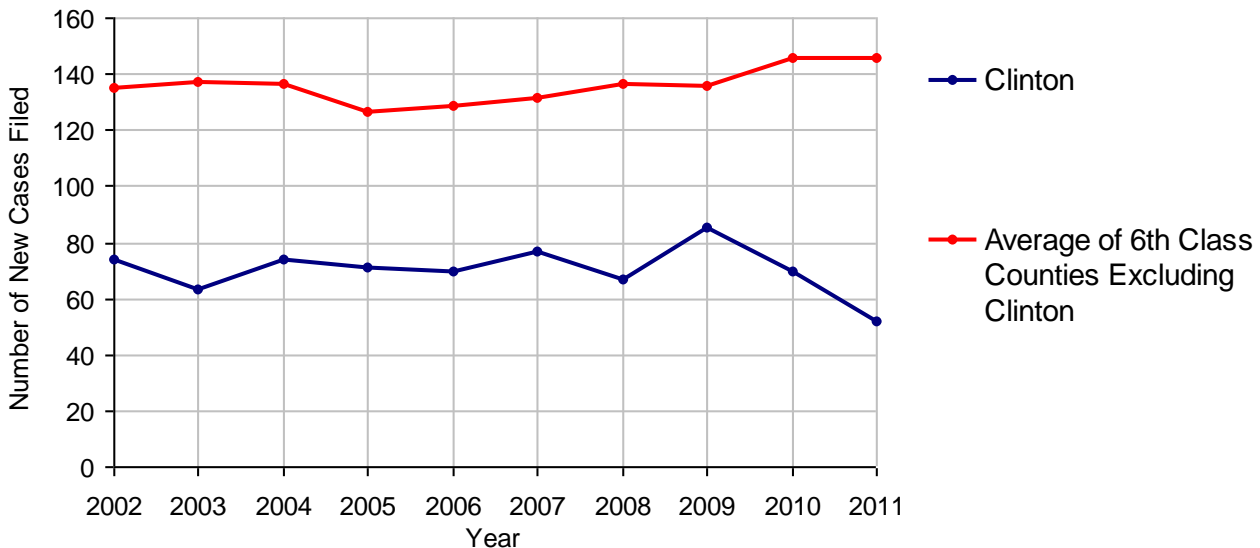


2011 Protection From Abuse

**No. of
Petitions**

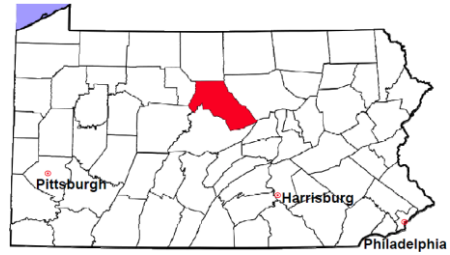
Cases Pending 1/1/2011	14
New Cases Filed in 2011	52
<i>Of these, Petitions Requesting Temporary Orders: 52 (100.0%)</i>	
<i>Temporary Orders DENIED: 11 (21.2%), Temporary Orders GRANTED: 41 (78.8%)</i>	
Cases Available for Processing	66
Processed By:	
Temporary Order DENIED After Ex Parte Hearing and No Evidentiary Hearing Scheduled	3 5.0%
Temporary Order DISMISSED After Evidentiary Hearing and No Final Order Entered	19 31.7%
Final Order DENIED After Evidentiary Hearing Before a Judge	13 21.7%
Final Order GRANTED After Evidentiary Hearing Before a Judge	16 26.7%
Plaintiff Did Not Appear For Evidentiary Hearing	1 1.7%
Final Order by STIPULATION OR AGREEMENT Between the Parties	4 6.7%
Petition WITHDRAWN by Plaintiff	4 6.7%
TRANSFERRED to Another Jurisdiction	0
DECEASED Party	0
Other	0
Cases Processed	60 100.0%
Cases Pending 12/31/2011	6

PFA New Cases Filed, 2002-2011

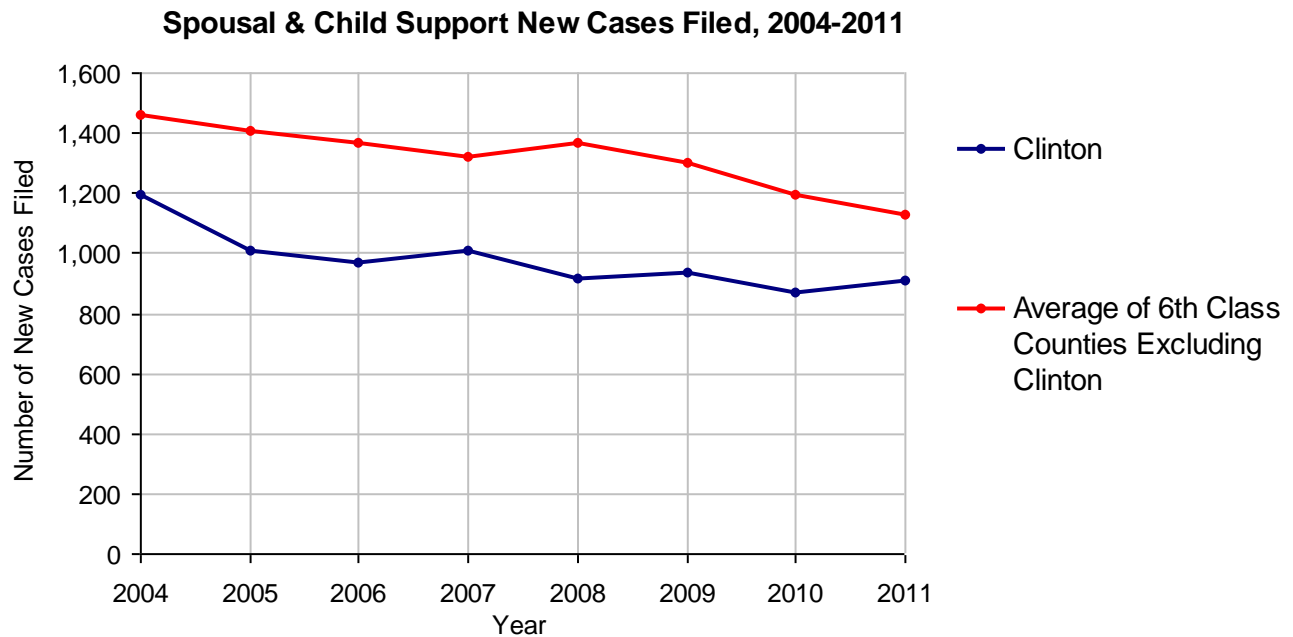


Clinton County

2011 Population Estimate: 39,208
 Class of County: 6th
 No. of Common Pleas Court Judgeships: 2



2011 Spousal & Child Support	No. of Petitions	
Cases Pending 1/1/2011	69	
New Cases Filed in 2011	911	
Dockets Transferred In (+)	13	
Dockets Transferred Out (-)	7	
Cases Available for Processing	986	
Processed By:		
Judge	69	7.4%
Intake Officer	861	92.6%
Hearing Officer	0	
Other	0	
Cases Processed	930	100.0%
Cases Pending 12/31/2011	56	

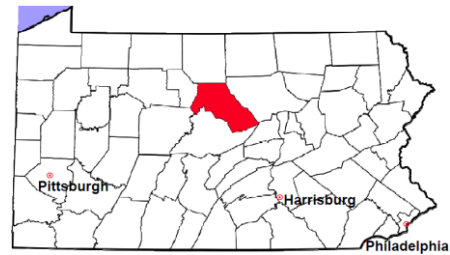


Clinton County

2011 Population Estimate: 39,208

Class of County: 6th

No. of Common Pleas Court Judgeships: 2



2011 Custody/Partial Custody/Visitation

No. of
Petitions

Cases Pending 1/1/2011

75

New Cases Filed in 2011

161

Cases Available for Processing

236

Processed By:

Judge

38

97.4%

Non-Judicial Officer

0

Other

1

2.6%

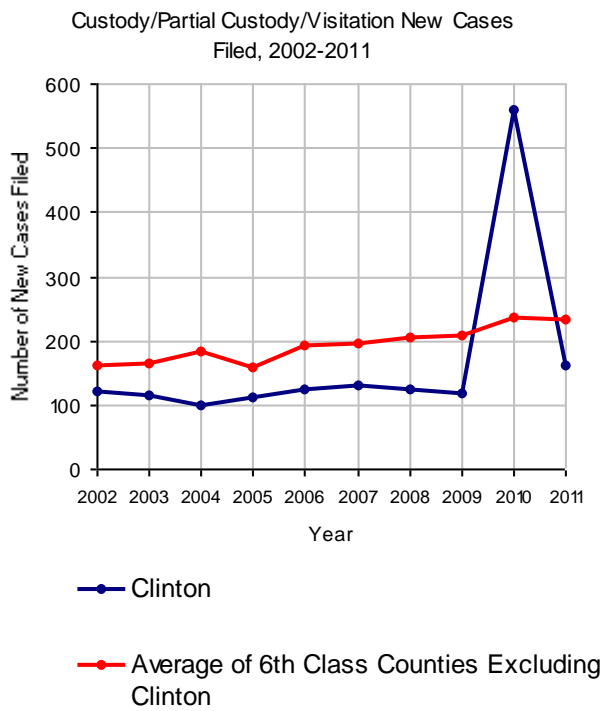
Cases Processed

39

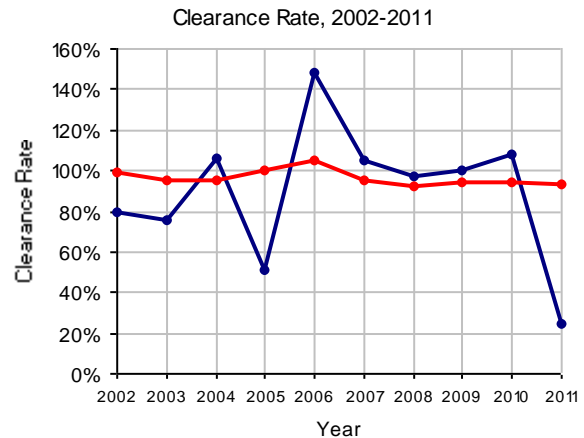
100.0%

Cases Pending 12/31/2011

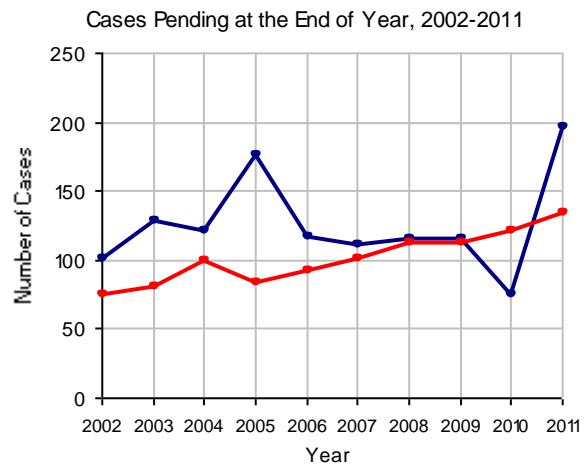
197



Note: The increase in filings for 2010 is due to cases returned to active status.

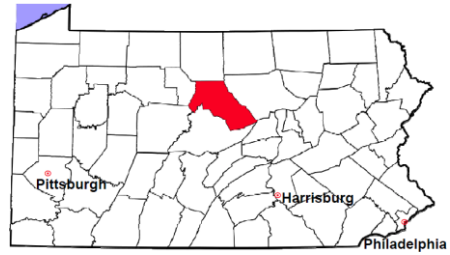


Note: Clearance Rate = Cases Processed / New Cases Filed



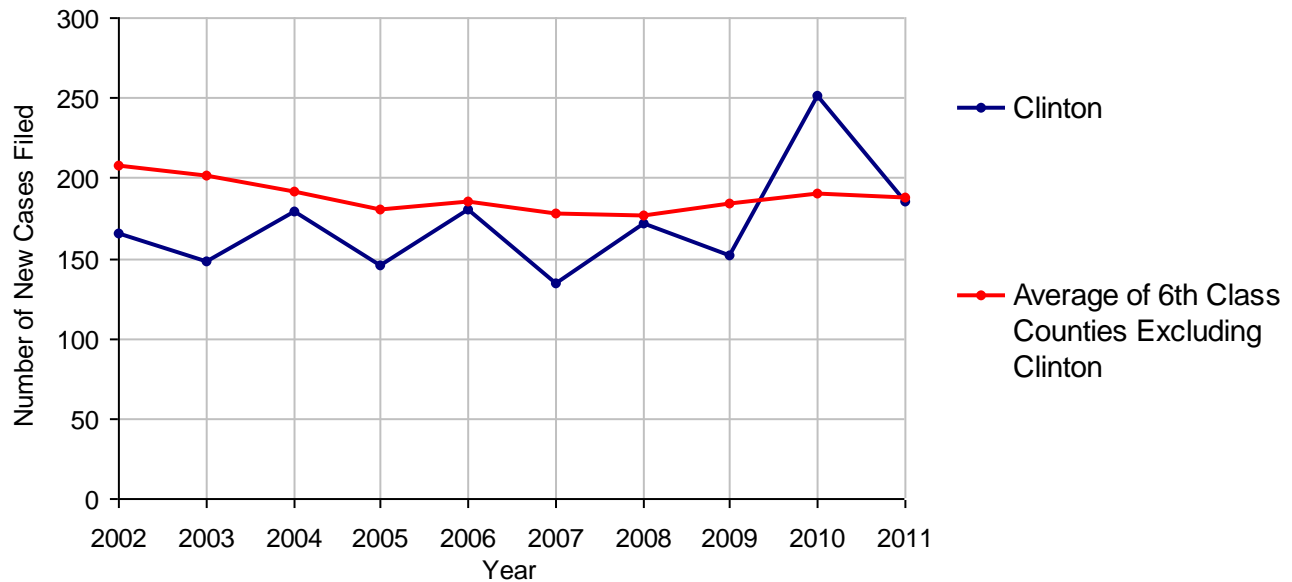
Clinton County

2011 Population Estimate: 39,208
 Class of County: 6th
 No. of Common Pleas Court Judgeships: 2



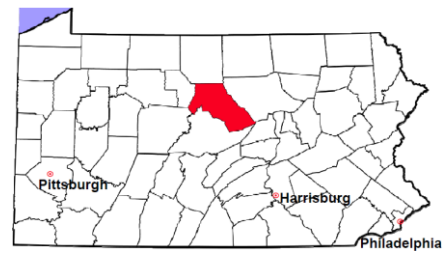
2011 Divorce	No. of Petitions	
Cases Pending 1/1/2011	127	
New Cases Filed in 2011	185	
Cases Available for Processing	312	
Processed By:		
Contested Before a Judge	76	66.7%
Contested Before a Master	0	
Uncontested	33	28.9%
Other	5	4.4%
Cases Processed	114	100.0%
Cases Pending 12/31/2011	198	

Divorce New Cases Filed, 2002-2011



Clinton County

2011 Population Estimate: 39,208
 Class of County: 6th
 No. of Common Pleas Court Judgeships: 2



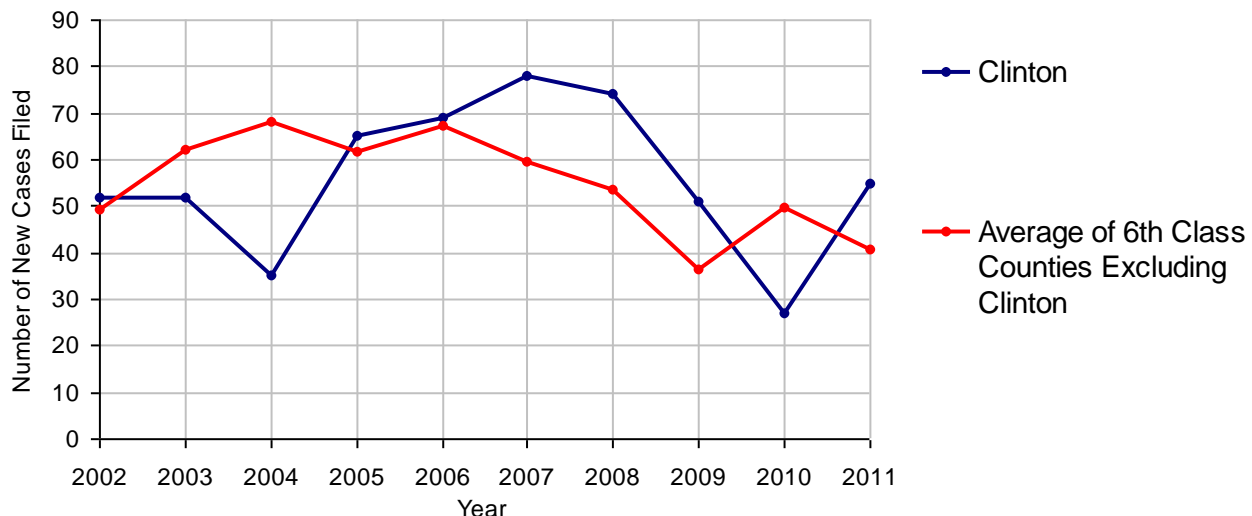
2011 Juvenile Dependency - Active Dependent Inventory



	Abuse/ Neglect	Status Offenses	Total
Cases Pending 1/1/2011	8	0	8
New Petitions Filed in 2011	48	7	55
Other	3	0	3
Total Petitions Available for Processing	59	7	66
Processed by:			
Adjudicated Dependent			
Judge	40	5	45
Master	0	0	0
Adjudicated NOT Dependent			
Judge	7	1	8
Master	0	0	0
Withdrawn/Dismissed/Inactive	0	0	0
Other	5	1	6
Total Petitions Processed	52	7	59
Cases Pending 12/31/2011	7	0	7

Data provided by CPCMS

Abuse/Neglect and Status Offenses New Cases Filed, 2002-2011



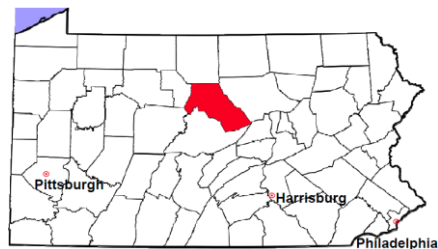
Note: Dependency data for 2002-2010 were collected manually. Dependency data for 2011 were provided by CPCMS.

Clinton County

2011 Population Estimate: 39,208

Class of County: 6th

No. of Common Pleas Court Judgeships: 2



2011 Juvenile Dependency - Adjudicated Dependent Inventory

	Abuse/ Neglect	Status Offenses	Total	
Cases Pending 1/1/2011	49	2	51	
New Adjudicated Dependent Cases	40	5	45	
Other	3	0	3	
Total Adjudicated Dependent Cases	92	7	99	
<u>Court Supervision Terminated:</u>				
Family Reunification	11	0	11	32.4%
Adoption	6	0	6	17.6%
Placement with a Relative/Guardian	5	1	6	17.6%
Aged Out	1	0	1	2.9%
Other Permanency Outcomes*	2	0	2	5.9%
Other**	8	0	8	23.5%
Total Adjudicated Dependent Cases Terminated	33	1	34	100.0%
Cases Pending 12/31/2011	59	6	65	

Data provided by CPCMS

* Other Permanency Outcomes include: adjudicated delinquent, death due to natural causes, emancipation, permanent living arrangement, and parent has come forward.

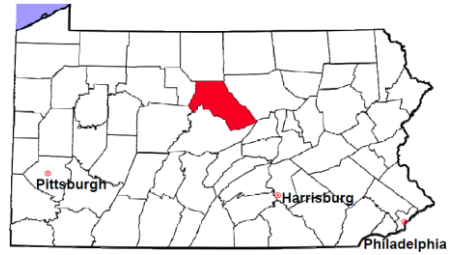
** Other includes cases where Court Supervision is terminated due to transfer out of jurisdiction, withdrawal and administrative closures.

Clinton County

2011 Population Estimate: 39,208

Class of County: 6th

No. of Common Pleas Court Judgeships: 2

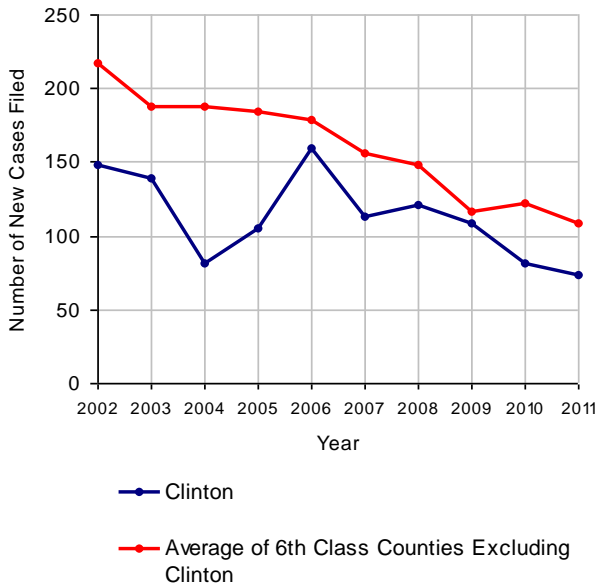


2011 Juvenile Delinquency

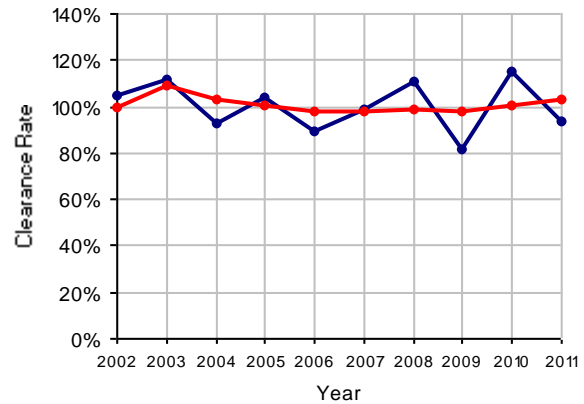
No. of Cases

Cases Pending 1/1/2011	17
New Cases Filed in 2011	74
Cases Available for Processing	91
Processed By:	
Judge	69 100.0%
Non-Judicial Officer	0
Other	0
Cases Processed	69 100.0%
Cases Pending 12/31/2011	22

Juvenile Delinquency New Cases Filed, 2002-2011

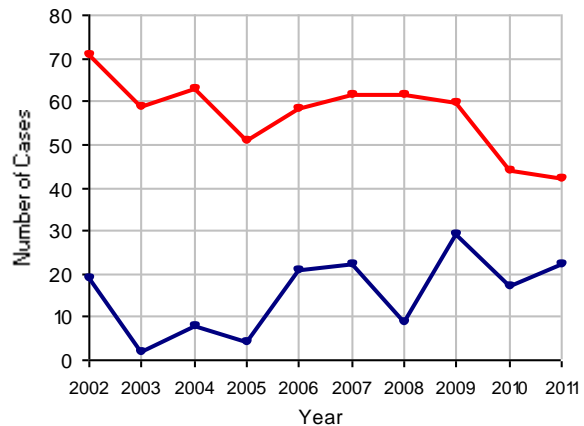


Clearance Rate, 2002-2011



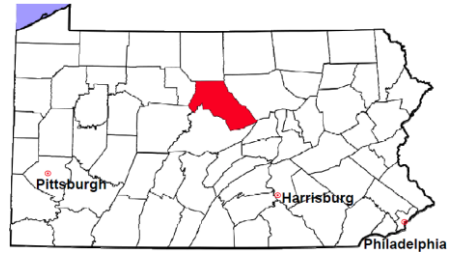
Note: Clearance Rate = Cases Processed / New Cases Filed

Cases Pending at the End of Year, 2002-2011



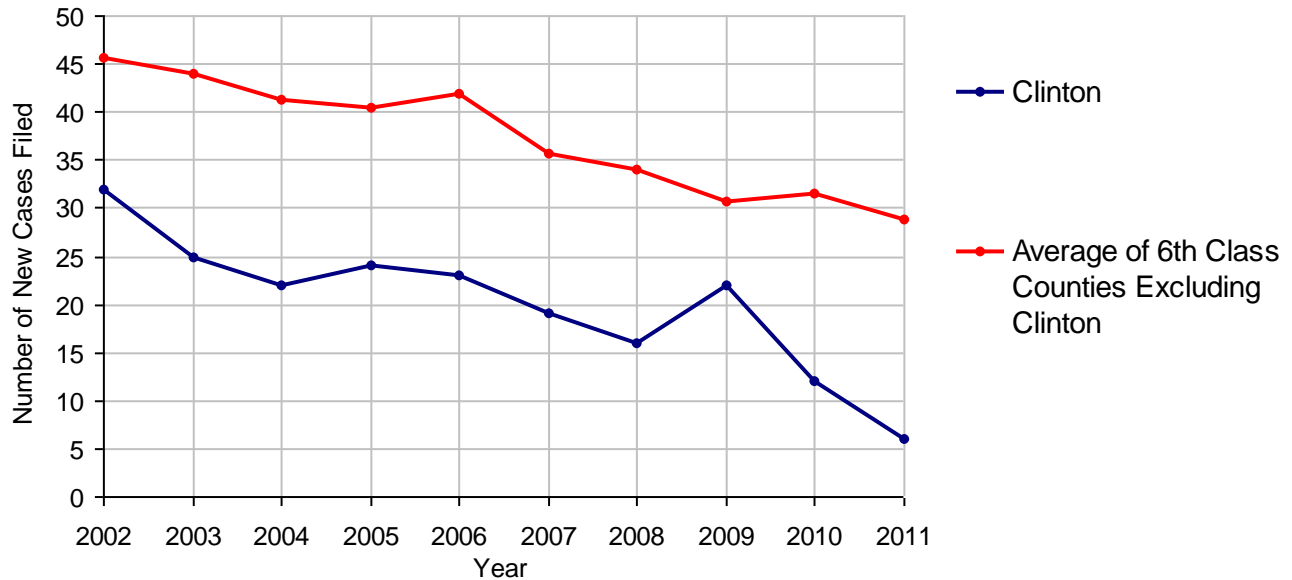
Clinton County

2011 Population Estimate: 39,208
 Class of County: 6th
 No. of Common Pleas Court Judgeships: 2



2011 Accounts	No. of Cases
Cases Pending 1/1/2011	0
New Cases Filed in 2011	6
Cases Available for Processing	6
Processed By:	
Contested before a Judge	0
Contested before a Non-judicial Officer	0
Uncontested	4 100.0%
Other	0
Cases Processed	4 100.0%
Cases Pending 12/31/2011	2

Accounts New Cases Filed, 2002-2011

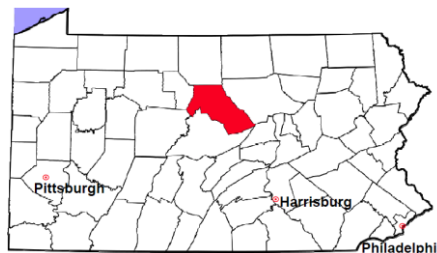


Clinton County

2011 Population Estimate: 39,208

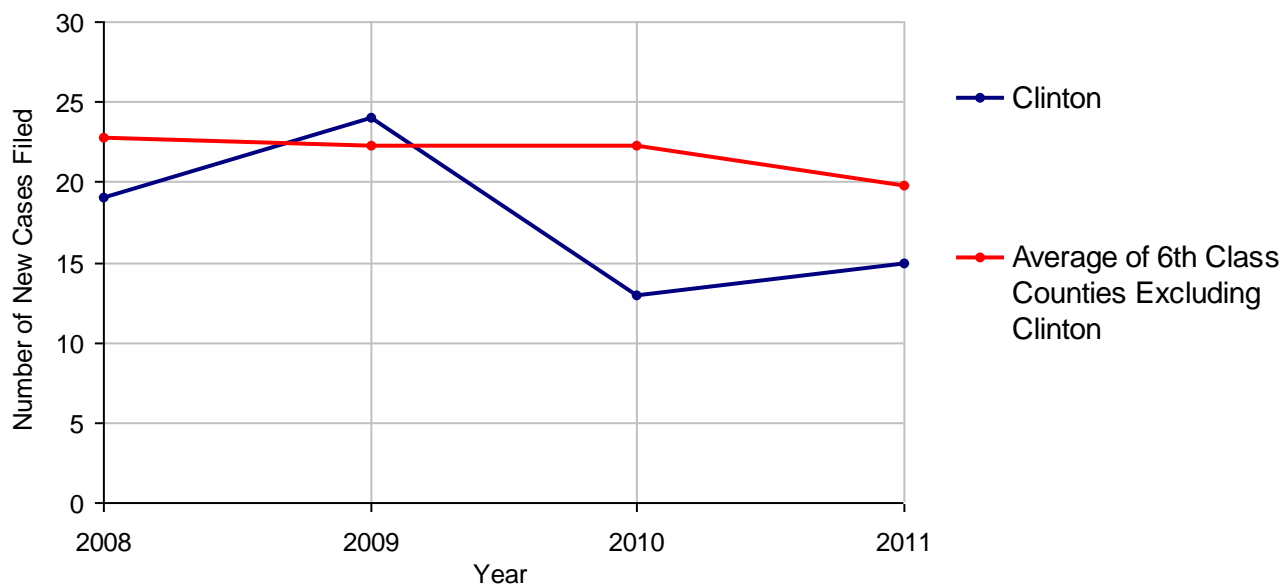
Class of County: 6th

No. of Common Pleas Court Judgeships: 2



2011 Adoptions		No. of Cases	
Cases Pending 1/1/2011		9	
New Cases Filed in 2011		15	
Cases Available for Processing		24	
Processed By:			
Contested before a Judge	Granted	3	30.0%
	Denied	0	
Uncontested	Granted	7	70.0%
	Denied	0	
Other		0	
Cases Processed		10	100.0%
Cases Pending 12/31/2011		14	

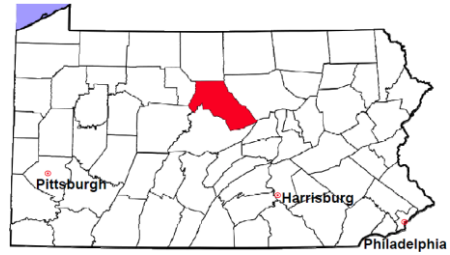
Adoptions New Cases Filed, 2008-2011



Note: Prior to 2008, each petition was counted as one new case, regardless of the number of children listed on the petition. Starting in 2008, each child listed on a petition is counted as a separate case. Therefore, statistics for the years since 2008 should not be compared to those for the years prior to 2008.

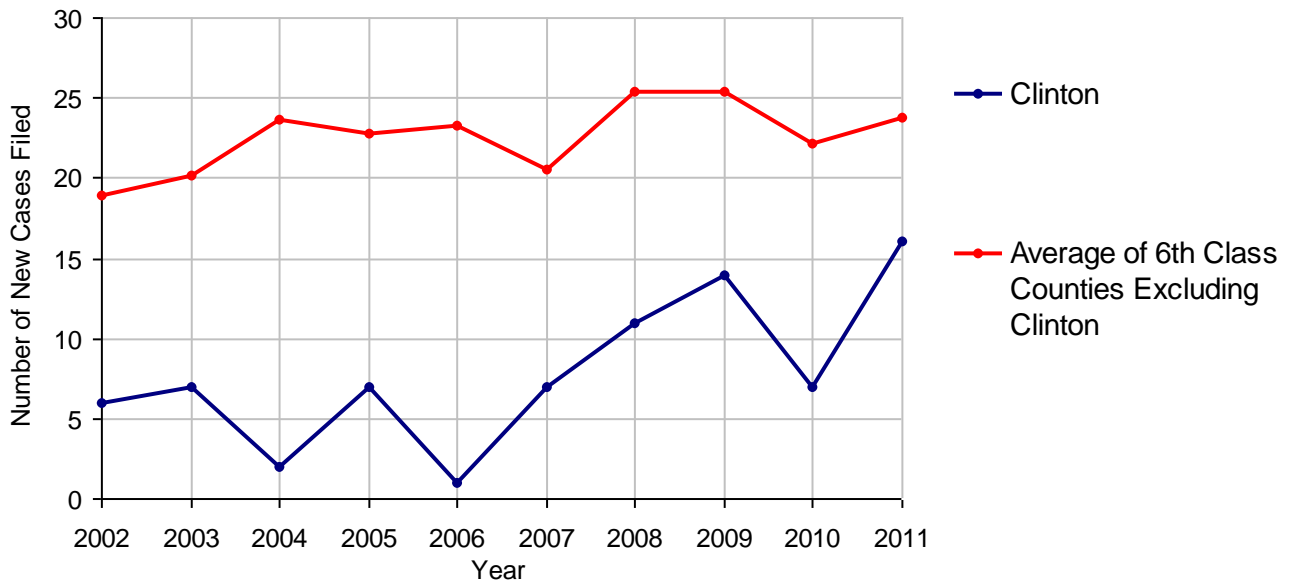
Clinton County

2011 Population Estimate: 39,208
 Class of County: 6th
 No. of Common Pleas Court Judgeships: 2



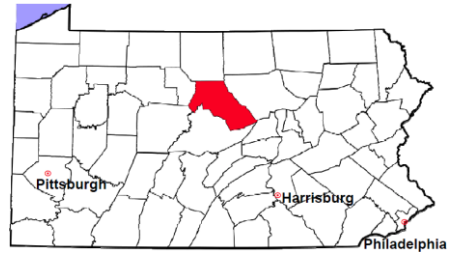
2011 Relinquishments/Terminations	No. of Cases
Cases Pending 1/1/2011	2
New Cases Filed in 2011	16
Cases Available for Processing	18
Processed By:	
Contested before a Judge	4 30.8%
Uncontested	9 69.2%
Other	0
Cases Processed	13 100.0%
Cases Pending 12/31/2011	5

Relinquishments/Terminations New Cases Filed, 2002-2011



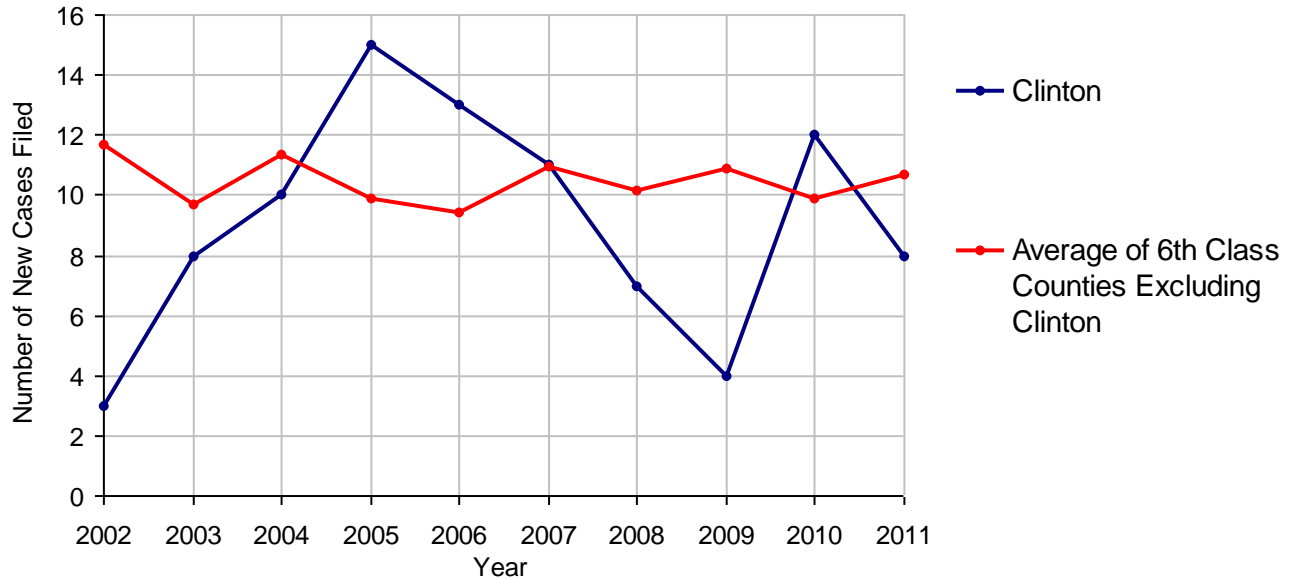
Clinton County

2011 Population Estimate: 39,208
 Class of County: 6th
 No. of Common Pleas Court Judgeships: 2



2011 Appointment of Guardians		No. of Cases
Cases Pending 1/1/2011		3
New Cases Filed in 2011		8
Cases Available for Processing		11
Processed By:		
Contested before a Judge		0
Uncontested	6	85.7%
Other	1	14.3%
Cases Processed	7	100.0%
Cases Pending 12/31/2011		4

Appointment of Guardians New Cases Filed, 2002-2011

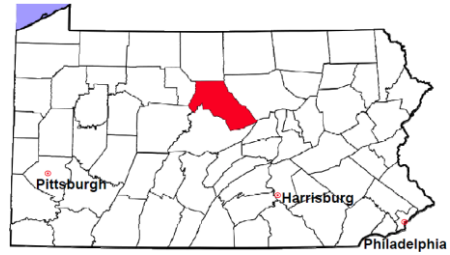


Clinton County

2011 Population Estimate: 39,208

Class of County: 6th

No. of Common Pleas Court Judgeships: 2



2011 Jury Activity and Performance Measures

A. Juror Days	538	
B. Number Sent to Voir Dire	770	
Voir Dire Attendance Rate (B/A * 100)		143.1%
C. Number of Jurors Selected	299	
Juror Selection Rate (C/B * 100)		38.8%

Note: In mid-2011, AOPC began utilizing the National Center for State Courts' Jury Managers' Toolbox for collecting jury data. This has resulted in limited jury performance measures being reported for 2011. Additional data will be available in 2012.