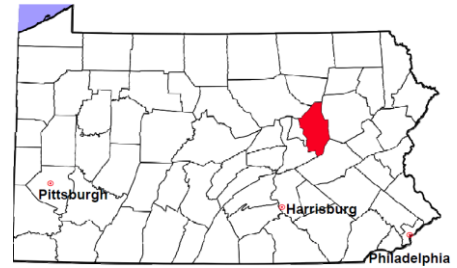


# Columbia County

2011 Population Estimate: 67,476  
 Class of County: 6th  
 No. of Common Pleas Court Judgeships: 2  
 (Columbia and Montour combined)



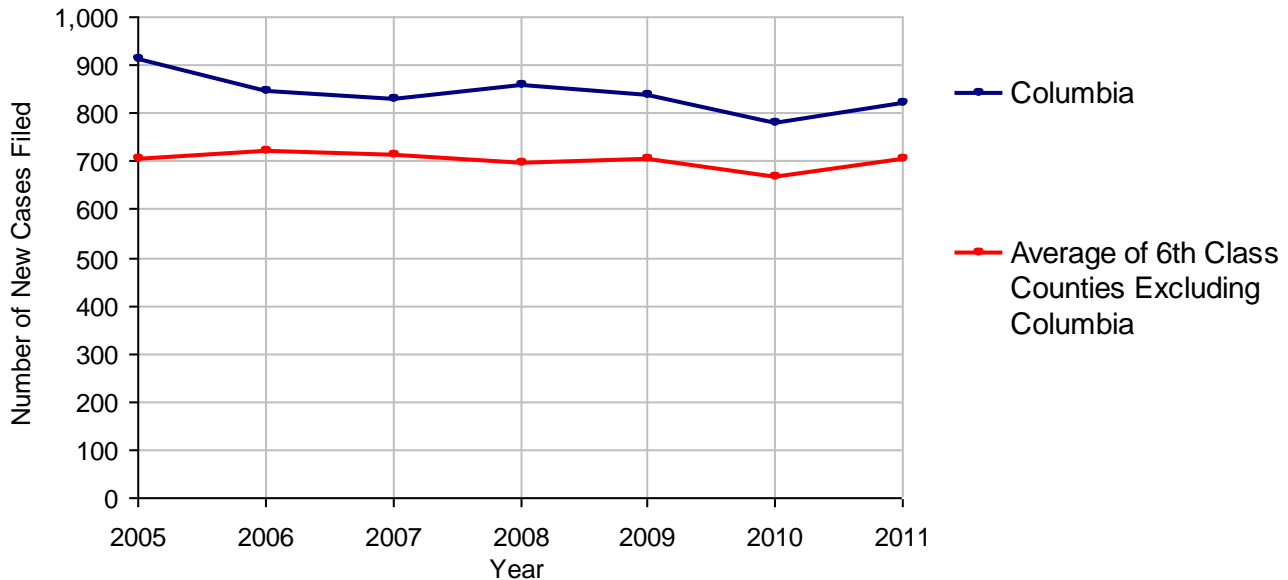
## 2011 Criminal No. of Cases

Cases Pending 1/1/2011	558	
New Cases Filed in 2011	823	
Reopened Cases	80	
<b>Cases Available for Disposition</b>	<b>1,461</b>	
<b>Disposed by:</b>		
Withdrawn/Dismissed	70	8.8%
ARD	201	25.2%
Guilty Plea	460	57.6%
Non-Jury Trial	2	0.3%
Jury Trial	6	0.8%
Inactive	29	3.6%
Other	30	3.8%
<b>Total Cases Disposed</b>	<b>798</b>	<b>100.0%</b>
<b>Cases Pending 12/31/2011</b>	<b>663</b>	
Cases Awaiting Sentencing	44	

Age of Pending Cases as of 12/31/2011		
0-60 Days	156	23.5%
61-120 Days	139	21.0%
121-180 Days	103	15.5%
181-240 Days	53	8.0%
241-300 Days	49	7.4%
301-360 Days	42	6.3%
Over 360 Days	121	18.3%
<b>Total</b>	<b>663</b>	<b>100.0%</b>

Data provided by CPCMS

**Criminal New Cases Filed, 2005-2011**

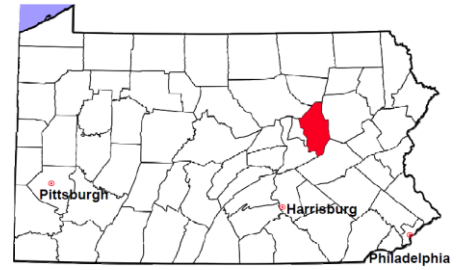


# Columbia County

2011 Population Estimate: 67,476

Class of County: 6th

No. of Common Pleas Court Judgeships: 2  
(Columbia and Montour combined)



## 2011 Criminal - New Cases by Case Type

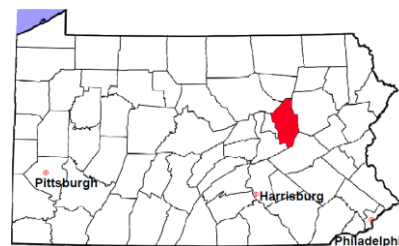


Case Type	Felony	Misdemeanor	Summary /Ungraded	Total
Person	54	45	1	100
Property	133	135	0	268
Drug	72	84	0	156
Weapon	3	2	0	5
Public Order	22	55	0	77
Motor Vehicle - DWI/DUI	0	211	0	211
Motor Vehicle - Other	0	5	1	6
Other	0	0	0	0
<b>Total</b>	<b>284</b>	<b>537</b>	<b>2</b>	<b>823</b>
	<b>34.5%</b>	<b>65.2%</b>	<b>0.2%</b>	<b>100.0%</b>

Data provided by CPCMS

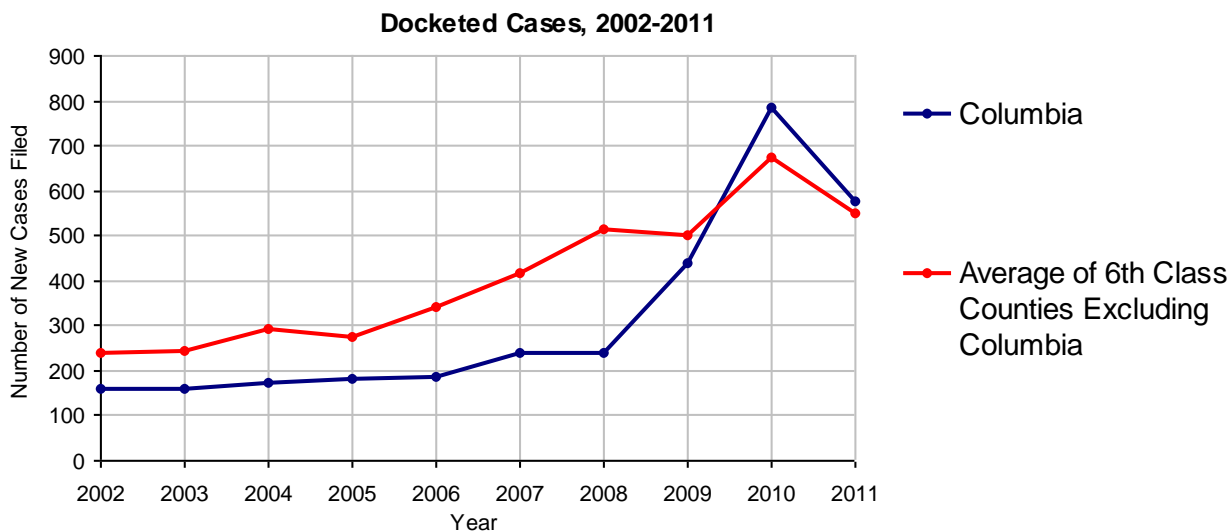
# Columbia County

2011 Population Estimate: 67,476  
 Class of County: 6th  
 No. of Common Pleas Court Judgeships: 2  
 (Columbia and Montour combined)



2011 Civil	Civil Action	Other	Total
Cases Pending 1/1/2011	976	1,317	2,293
Docketed Cases	398	178	576
Arbitration Appeals	1	0	1
Transferred In	0	0	0
Returned to Active	0	0	0
<b>Cases Available for Processing</b>	<b>1,375</b>	<b>1,495</b>	<b>2,870</b>
Disposed By:			
Default Judgments	179	56	235
Cases Decided by Arbitration Board	11	4	15
Dispositive Motions	12	13	25
Settlements	12	3	15
Moved to Inactive Status	0	0	0
Transferred/Withdrawn	26	6	32
Pa.R.J.A. 1901 Administrative Purge	89	72	161
Other	499	68	567
Jury Trial	1	0	1
Non-Jury Trial	4	1	5
<b>Total Cases Disposed</b>	<b>833</b>	<b>223</b>	<b>1,056</b>
<b>Cases Pending 12/31/2011</b>	<b>542</b>	<b>1,272</b>	<b>1,814</b>

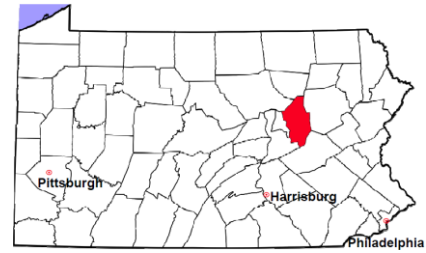
Age of Pending Cases as of 12/31/2011 (Civil Action Only)		
0-6 months	128	23.6%
7-12 months	80	14.8%
13-18 months	78	14.4%
19-24 months	47	8.7%
25-30 months	13	2.4%
31-36 months	17	3.1%
37-42 months	42	7.7%
43-48 months	33	6.1%
49-54 months	11	2.0%
55-60 months	8	1.5%
61-66 months	11	2.0%
67-72 months	7	1.3%
Over 72 months	67	12.4%
<b>Total</b>	<b>542</b>	<b>100.0%</b>



Note: Prior to June 2010, docketed cases under the "Other" category were not reported. The reporting of these cases starting from June 2010 may contribute to an increase in docketed cases from 2009 to 2010.

# Columbia County

2011 Population Estimate: 67,476  
 Class of County: 6th  
 No. of Common Pleas Court Judgeships: 2  
 (Columbia and Montour combined)



## 2011 Civil - Docketed Cases Listed by Case Type

### TORT (does not include mass tort)

Intentional	5
Malicious Prosecution	0
Motor Vehicle	52
Nuisance	1
Premise Liability	10
Product Liability	1
Slander/Libel/Defamation	1
Other	10

### MASS TORT

Asbestos	0
Tobacco	0
Toxic Tort - DES	0
Toxic Tort - Implant	0
Toxic Waste	0
Other	2

### PROFESSIONAL LIABILITY

Dental	0
Legal	1
Medical Malpractice	12
Other	1

### CONTRACT

(does not include judgments)

Buyer Plaintiff	3
Debt Collection:	
Credit Card	192
Debt Collection: Other	65
Employment Dispute:	
Discrimination	0
Employment Dispute: Other	2
Other	20

### REAL PROPERTY

Ejectment*	17
Eminent Domain/ Condemnation*	3
Ground Rent	0
Landlord/Tenant Dispute	20
Mortgage Forclosures:	
Residential*	71
Commercial*	5
Partition of Real Property*	2
Quiet Title*	7
Other*	7

### CIVIL APPEALS

*Administrative Agencies*

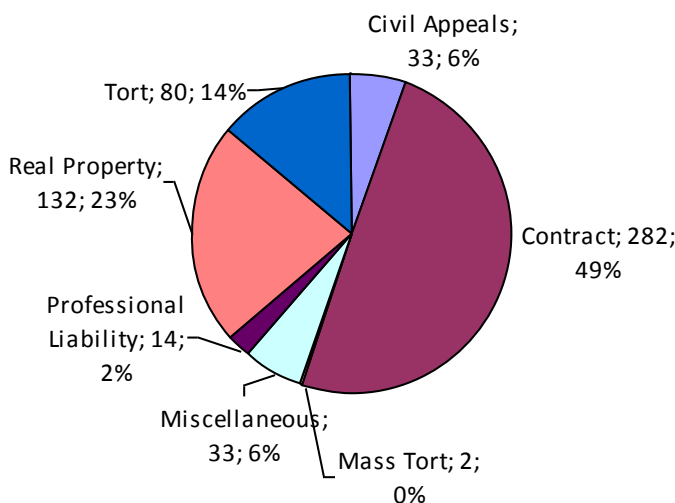
Board of Assessment*	0
Board of Elections*	5
Dept. of Transportation*	11
Zoning Board*	3
Statutory Appeal - Other*	13
Other*	1

### MISCELLANEOUS

Common Law/ Statutory Arbitration*	1
Declaratory Judgment*	5
Mandamus*	1
Non-Domestic Relations Restraining Order*	0
Quo Warranto*	0
Replevin*	7
Other*	19

**TOTAL DOCKETED CASES: 576**

\* Civil Other



### Of the Docketed Cases:

Pro Se Filings:	19	3.3%
Class Action Suits:	0	
MDJ Appeals:	55	9.5%

# Columbia County

2011 Population Estimate: 67,476  
 Class of County: 6th  
 No. of Common Pleas Court Judgeships: 2  
 (Columbia and Montour combined)



## 2011 Protection From Abuse

**No. of  
Petitions**

Cases Pending 1/1/2011	47
New Cases Filed in 2011	203

*Of these, Petitions Requesting Temporary Orders: 203 (100.0%)  
 Temporary Orders DENIED: 27 (13.3%), Temporary Orders GRANTED: 176 (86.7%)*

**Cases Available for Processing 250**

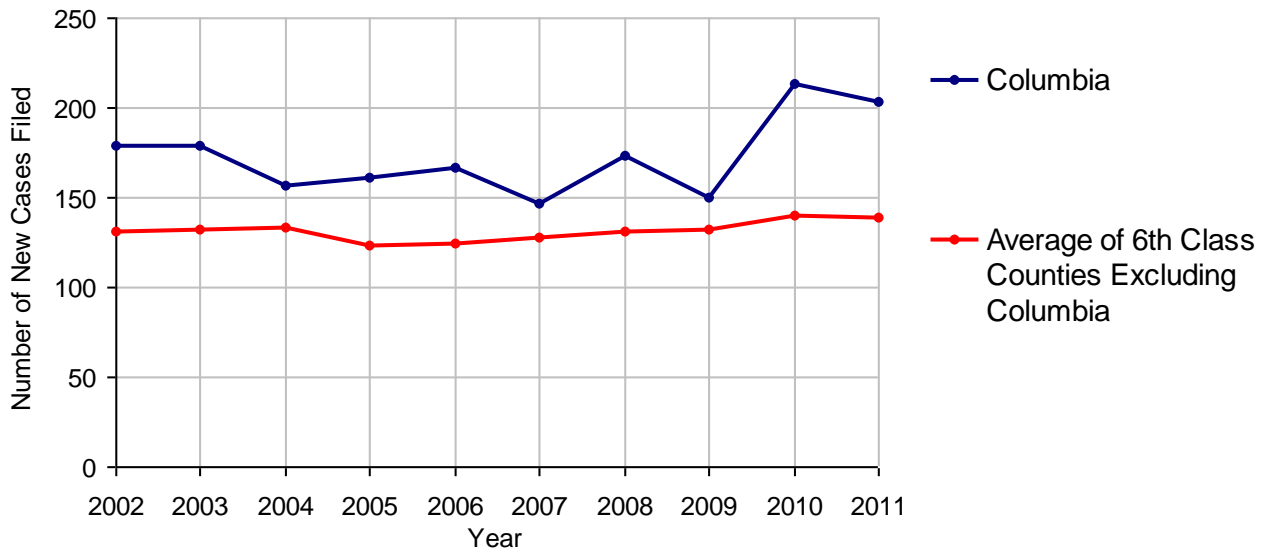
Processed By:

Temporary Order DENIED After Ex Parte Hearing and No Evidentiary Hearing Scheduled	6	2.8%
Temporary Order DISMISSED After Evidentiary Hearing and No Final Order Entered	26	12.1%
Final Order DENIED After Evidentiary Hearing Before a Judge	4	1.9%
Final Order GRANTED After Evidentiary Hearing Before a Judge	38	17.8%
Plaintiff Did Not Appear For Evidentiary Hearing	16	7.5%
Final Order by STIPULATION OR AGREEMENT Between the Parties	46	21.5%
Petition WITHDRAWN by Plaintiff	51	23.8%
TRANSFERRED to Another Jurisdiction	0	
DECEASED Party	1	0.5%
Other	26	12.1%

**Cases Processed 214 100.0%**

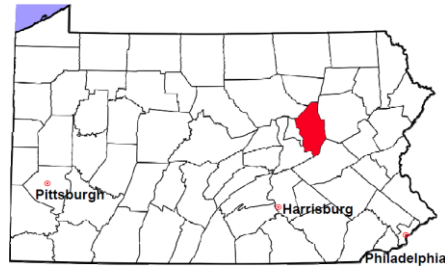
**Cases Pending 12/31/2011 36**

**PFA New Cases Filed, 2002-2011**

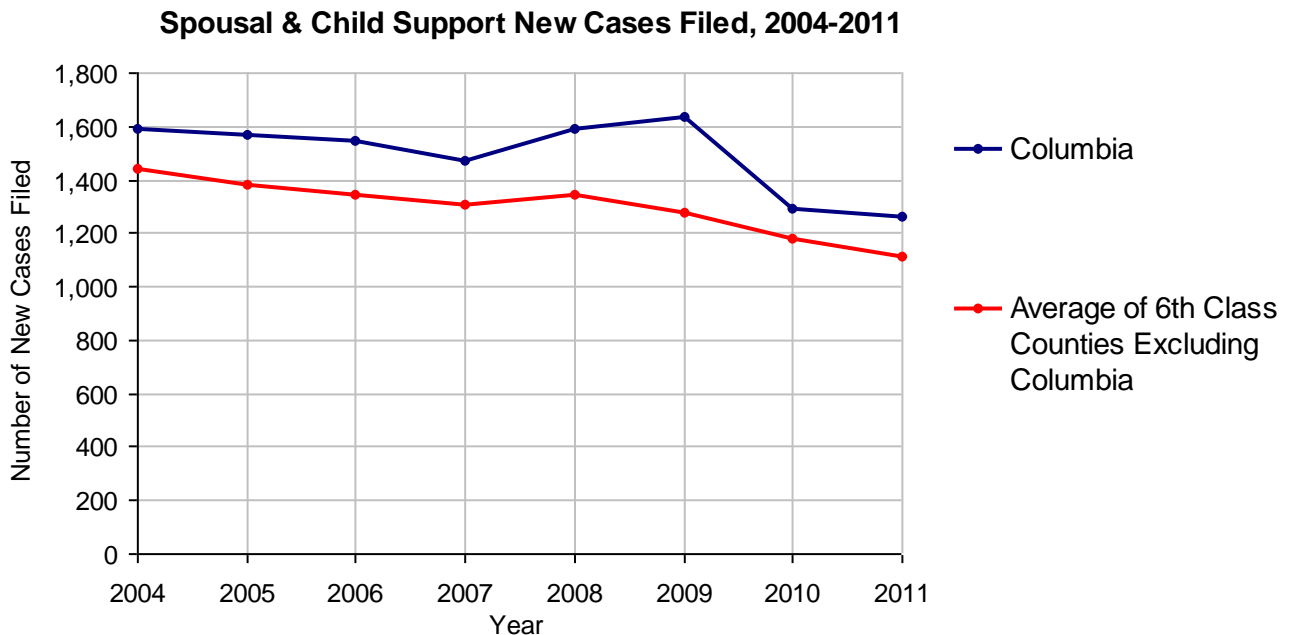


# Columbia County

2011 Population Estimate: 67,476  
 Class of County: 6th  
 No. of Common Pleas Court Judgeships: 2  
 (Columbia and Montour combined)



<b>2011 Spousal &amp; Child Support</b>	<b>No. of Petitions</b>	
Cases Pending 1/1/2011	233	
New Cases Filed in 2011	1,261	
Dockets Transferred In (+)	14	
Dockets Transferred Out (-)	22	
<b>Cases Available for Processing</b>	<b>1,486</b>	
Processed By:		
Judge	13	1.0%
Intake Officer	1,166	92.8%
Hearing Officer	78	6.2%
Other	0	
<b>Cases Processed</b>	<b>1,257</b>	<b>100.0%</b>
<b>Cases Pending 12/31/2011</b>	<b>229</b>	

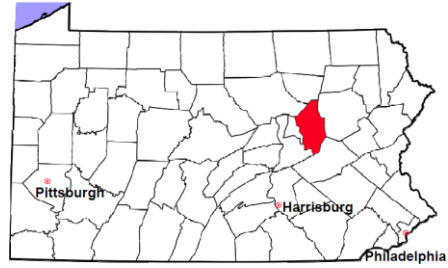


# Columbia County

2011 Population Estimate: 67,476

Class of County: 6th

No. of Common Pleas Court Judgeships: 2  
(Columbia and Montour combined)



## 2011 Custody/Partial Custody/Visitation

No. of  
Petitions

Cases Pending 1/1/2011	380
New Cases Filed in 2011	259
<b>Cases Available for Processing</b>	<b>639</b>

Processed By:

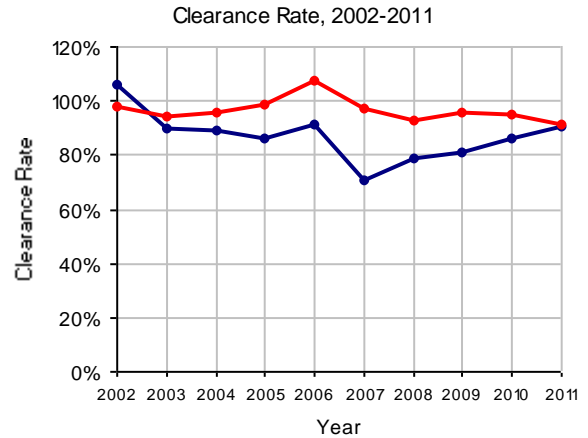
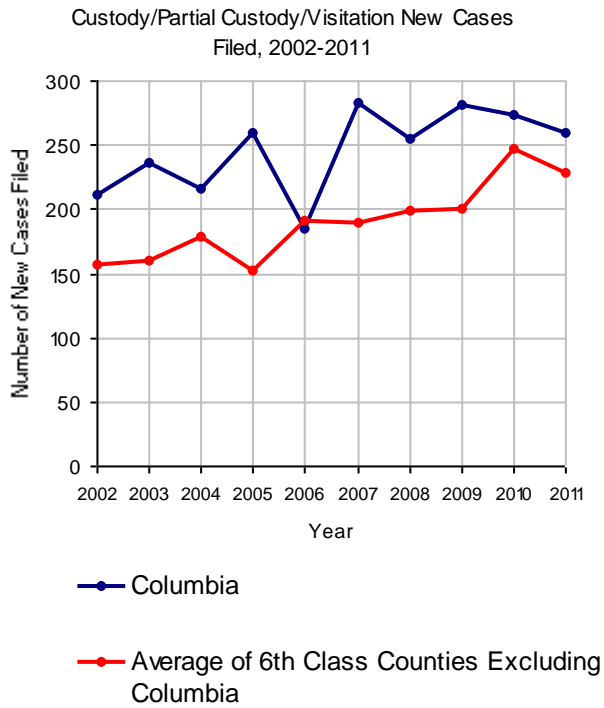
Judge	7	3.0%
Non-Judicial Officer	209	89.3%
Other	18	7.7%

**Cases Processed**

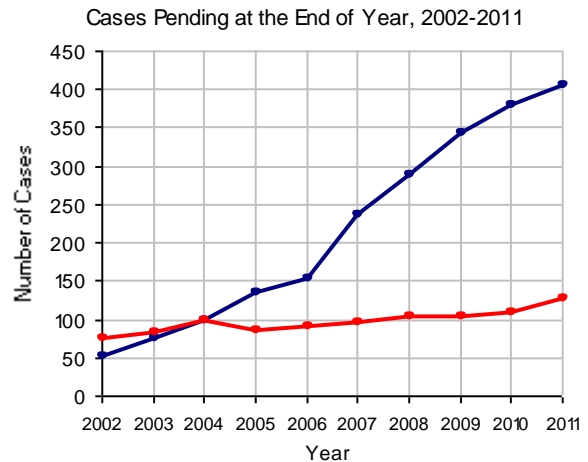
**234 100.0%**

**Cases Pending 12/31/2011**

**405**

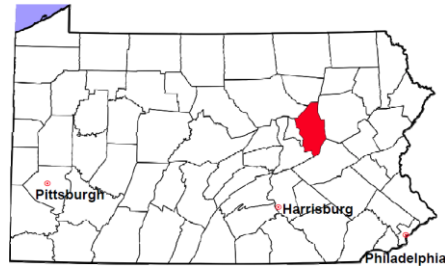


Note: Clearance Rate = Cases Processed / New Cases Filed



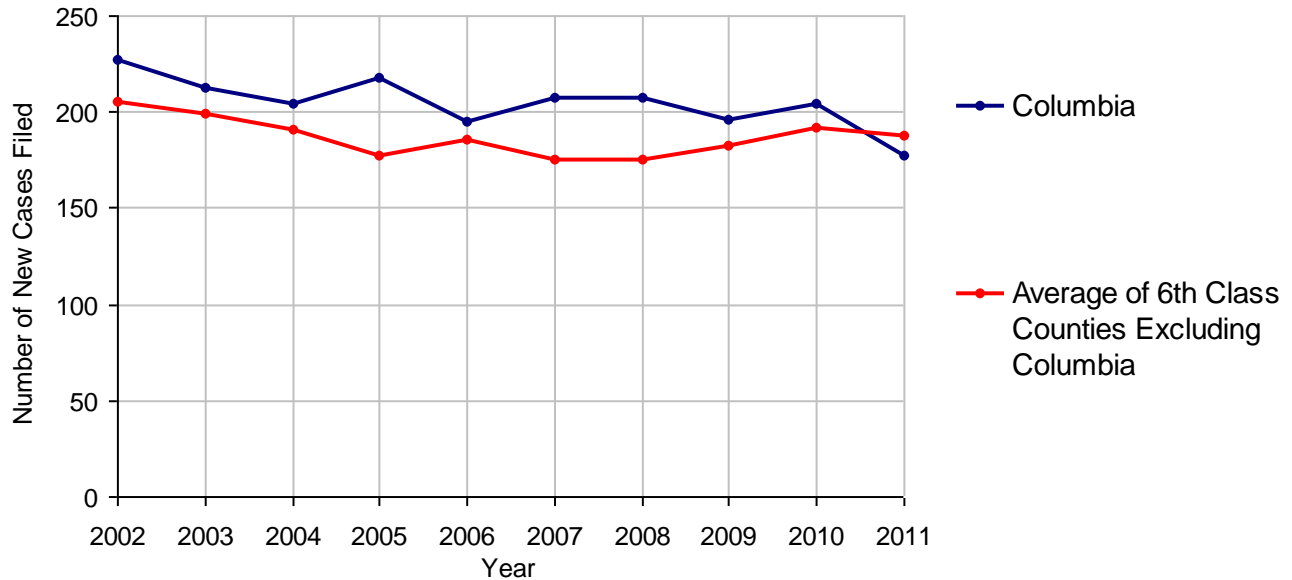
# Columbia County

2011 Population Estimate: 67,476  
 Class of County: 6th  
 No. of Common Pleas Court Judgeships: 2  
 (Columbia and Montour combined)



<b>2011 Divorce</b>	<b>No. of Petitions</b>	
Cases Pending 1/1/2011	447	
New Cases Filed in 2011	177	
<b>Cases Available for Processing</b>	<b>624</b>	
Processed By:		
Contested Before a Judge	0	
Contested Before a Master	33	19.9%
Uncontested	120	72.3%
Other	13	7.8%
<b>Cases Processed</b>	<b>166</b>	<b>100.0%</b>
<b>Cases Pending 12/31/2011</b>	<b>458</b>	

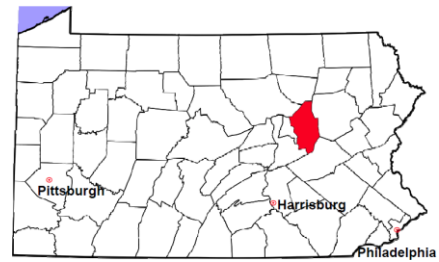
**Divorce New Cases Filed, 2002-2011**





# Columbia County

2011 Population Estimate: 67,476  
 Class of County: 6th  
 No. of Common Pleas Court Judgeships: 2  
 (Columbia and Montour combined)



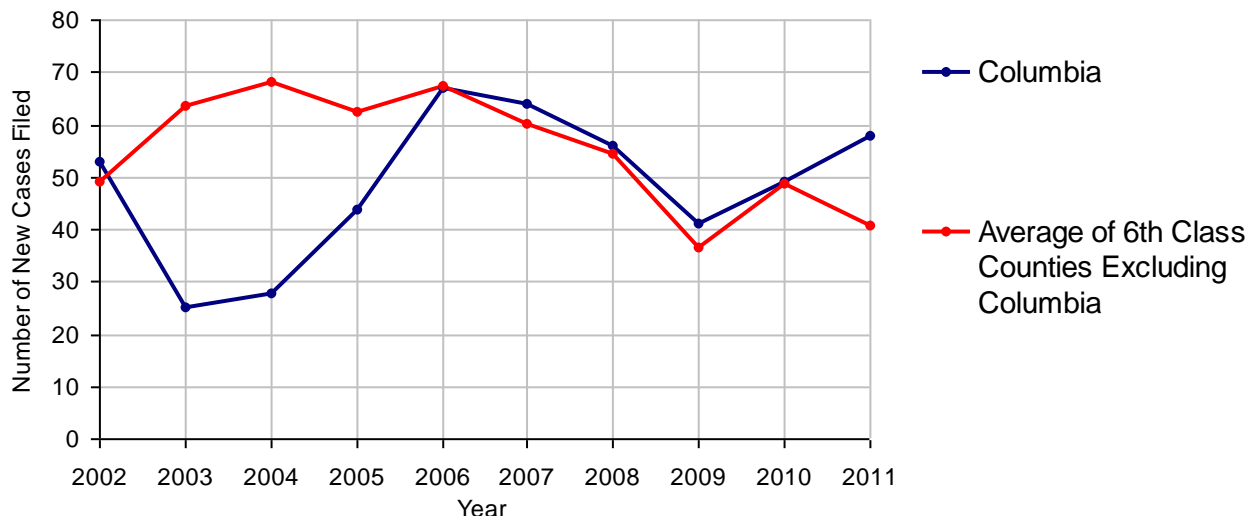
## 2011 Juvenile Dependency - Active Dependent Inventory



	Abuse/ Neglect	Status Offenses	Total
Cases Pending 1/1/2011	50	1	51
New Petitions Filed in 2011	57	1	58
Other	1	0	1
<b>Total Petitions Available for Processing</b>	<b>108</b>	<b>2</b>	<b>110</b>
Processed by:			
Adjudicated Dependent			
Judge	8	0	8
Master	41	0	41
Adjudicated NOT Dependent			
Judge	0	0	0
Master	1	0	1
Withdrawn/Dismissed/Inactive	9	1	10
Other	4	0	4
<b>Total Petitions Processed</b>	<b>63</b>	<b>1</b>	<b>64</b>
<b>Cases Pending 12/31/2011</b>	<b>45</b>	<b>1</b>	<b>46</b>

Data provided by CPCMS

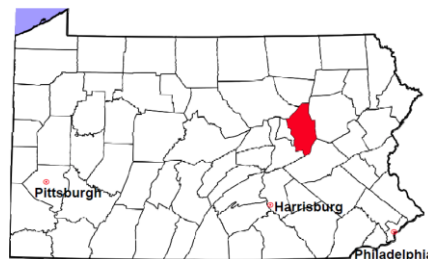
Abuse/Neglect and Status Offenses New Cases Filed, 2002-2011



Note: Dependency data for 2002-2010 were collected manually. Dependency data for 2011 were provided by CPCMS.

# Columbia County

2011 Population Estimate: 67,476  
 Class of County: 6th  
 No. of Common Pleas Court Judgeships: 2  
 (Columbia and Montour combined)



## 2011 Juvenile Dependency - Adjudicated Dependent Inventory

	Abuse/ Neglect	Status Offenses	Total	
Cases Pending 1/1/2011	148	0	148	
New Adjudicated Dependent Cases	49	0	49	
Other	5	0	5	
<b>Total Adjudicated Dependent Cases</b>	<b>202</b>	<b>0</b>	<b>202</b>	
<b><u>Court Supervision Terminated:</u></b>				
Family Reunification	6	0	6	20.7%
Adoption	1	0	1	3.4%
Placement with a Relative/Guardian	14	0	14	48.3%
Aged Out	2	0	2	6.9%
Other Permanency Outcomes*	1	0	1	3.4%
Other**	5	0	5	17.2%
<b>Total Adjudicated Dependent Cases Terminated</b>	<b>29</b>	<b>0</b>	<b>29</b>	<b>100.0%</b>
<b>Cases Pending 12/31/2011</b>	<b>173</b>	<b>0</b>	<b>173</b>	

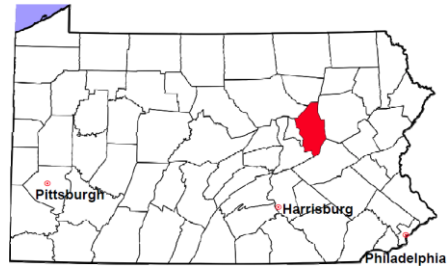
Data provided by CPCMS

\* Other Permanency Outcomes include: adjudicated delinquent, death due to natural causes, emancipation, permanent living arrangement, and parent has come forward.

\*\* Other includes cases where Court Supervision is terminated due to transfer out of jurisdiction, withdrawal and administrative closures.

# Columbia County

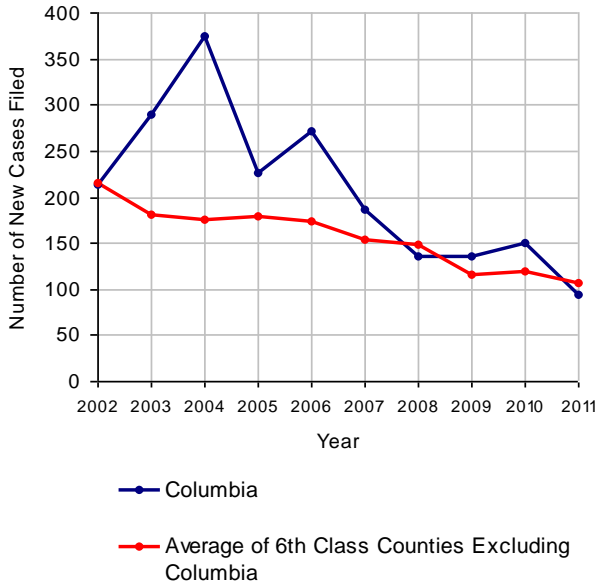
2011 Population Estimate: 67,476  
 Class of County: 6th  
 No. of Common Pleas Court Judgeships: 2  
 (Columbia and Montour combined)



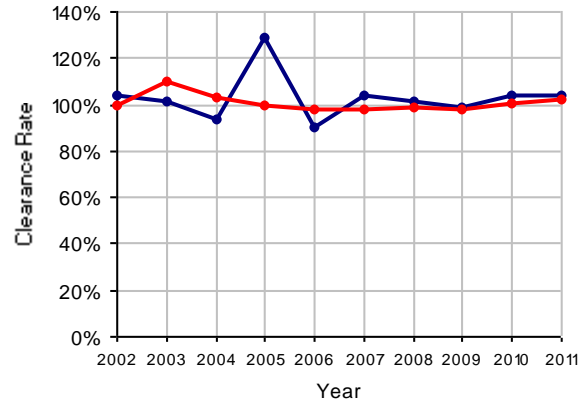
## 2011 Juvenile Delinquency

	No. of Cases
Cases Pending 1/1/2011	21
New Cases Filed in 2011	94
<b>Cases Available for Processing</b>	<b>115</b>
Processed By:	
Judge	78 79.6%
Non-Judicial Officer	14 14.3%
Other	6 6.1%
<b>Cases Processed</b>	<b>98 100.0%</b>
<b>Cases Pending 12/31/2011</b>	<b>17</b>

Juvenile Delinquency New Cases Filed, 2002-2011

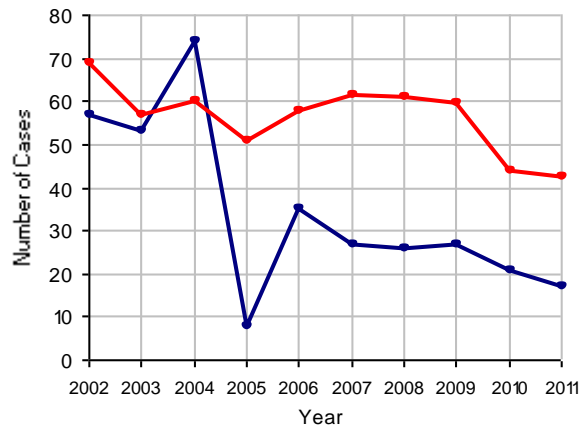


Clearance Rate, 2002-2011



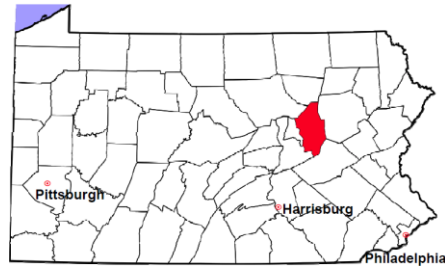
Note: Clearance Rate = Cases Processed / New Cases Filed

Cases Pending at the End of Year, 2002-2011



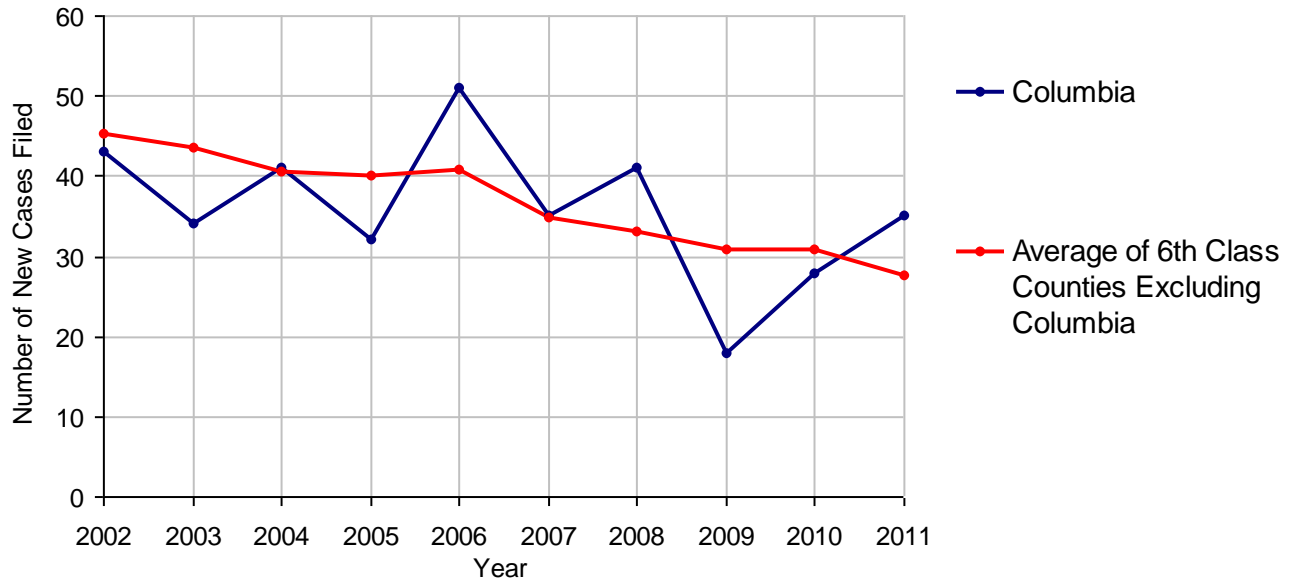
# Columbia County

2011 Population Estimate: 67,476  
 Class of County: 6th  
 No. of Common Pleas Court Judgeships: 2  
 (Columbia and Montour combined)



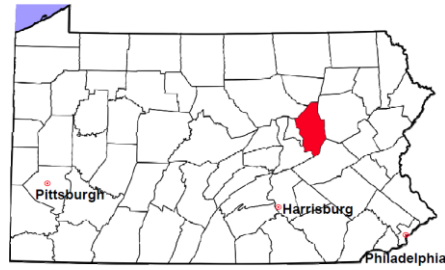
<b>2011 Accounts</b>	<b>No. of Cases</b>	
Cases Pending 1/1/2011	8	
New Cases Filed in 2011	35	
<b>Cases Available for Processing</b>	<b>43</b>	
Processed By:		
Contested before a Judge	1	3.3%
Contested before a Non-judicial Officer	0	
Uncontested	28	93.3%
Other	1	3.3%
<b>Cases Processed</b>	<b>30</b>	<b>100.0%</b>
<b>Cases Pending 12/31/2011</b>	<b>13</b>	

**Accounts New Cases Filed, 2002-2011**



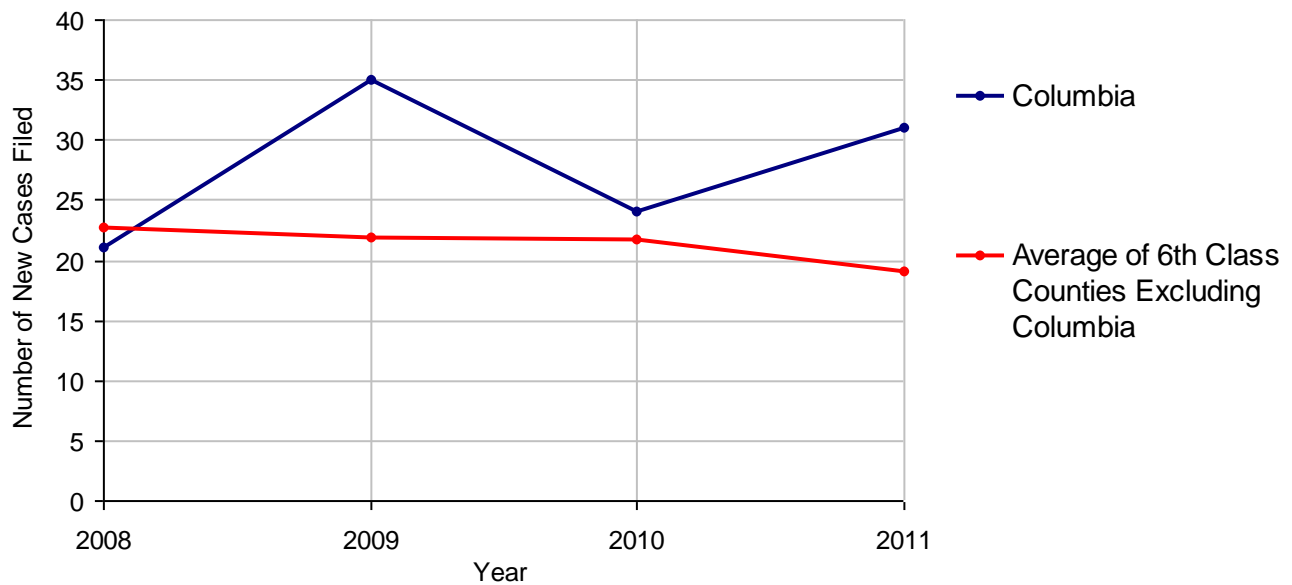
# Columbia County

2011 Population Estimate: 67,476  
 Class of County: 6th  
 No. of Common Pleas Court Judgeships: 2  
 (Columbia and Montour combined)



<b>2011 Adoptions</b>		<b>No. of Cases</b>	
Cases Pending 1/1/2011		9	
New Cases Filed in 2011		31	
<b>Cases Available for Processing</b>		<b>40</b>	
Processed By:			
Contested before a Judge	Granted	7	19.4%
	Denied	0	
Uncontested	Granted	29	80.6%
	Denied	0	
Other		0	
<b>Cases Processed</b>		<b>36</b>	<b>100.0%</b>
<b>Cases Pending 12/31/2011</b>		<b>4</b>	

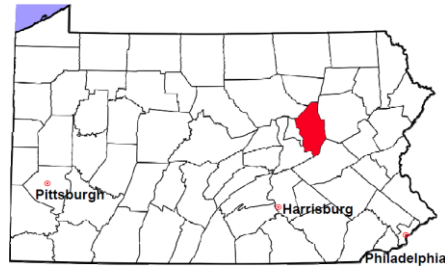
**Adoptions New Cases Filed, 2008-2011**



Note: Prior to 2008, each petition was counted as one new case, regardless of the number of children listed on the petition. Starting in 2008, each child listed on a petition is counted as a separate case. Therefore, statistics for the years since 2008 should not be compared to those for the years prior to 2008.

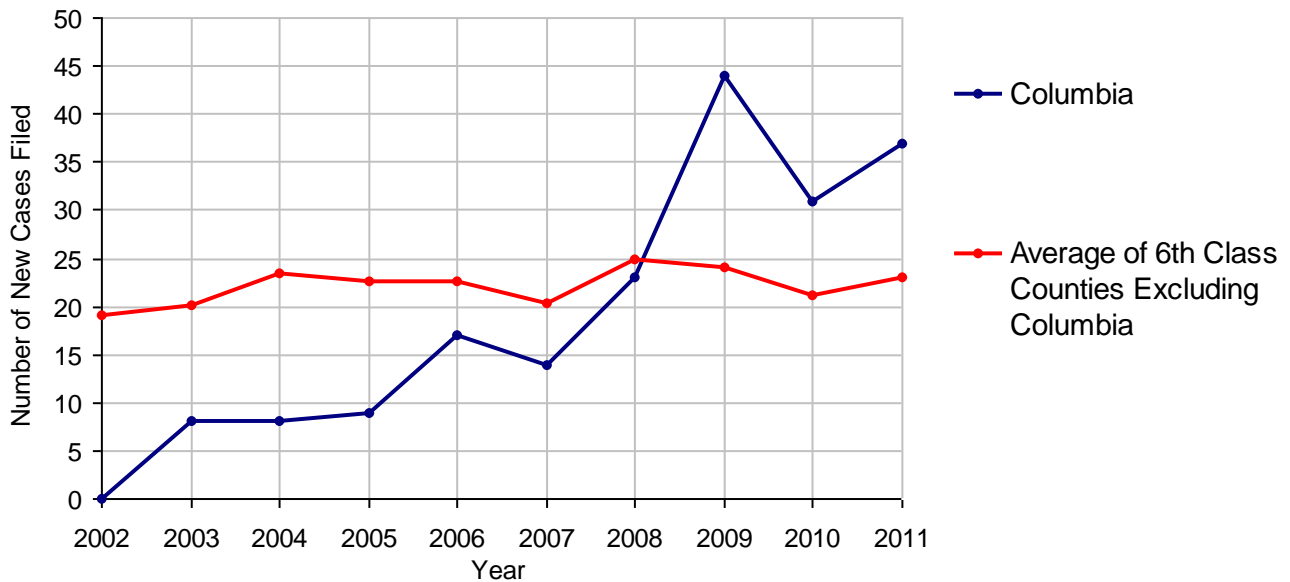
# Columbia County

2011 Population Estimate: 67,476  
 Class of County: 6th  
 No. of Common Pleas Court Judgeships: 2  
 (Columbia and Montour combined)



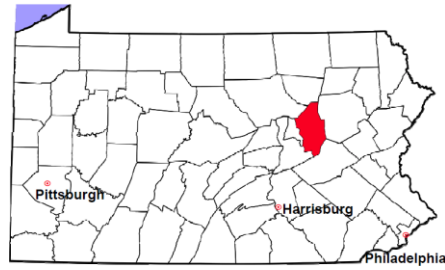
2011 Relinquishments/Terminations	No. of Cases
Cases Pending 1/1/2011	10
New Cases Filed in 2011	37
<b>Cases Available for Processing</b>	<b>47</b>
Processed By:	
Contested before a Judge	17    43.6%
Uncontested	22    56.4%
Other	0
<b>Cases Processed</b>	<b>39    100.0%</b>
<b>Cases Pending 12/31/2011</b>	<b>8</b>

Relinquishments/Terminations New Cases Filed, 2002-2011



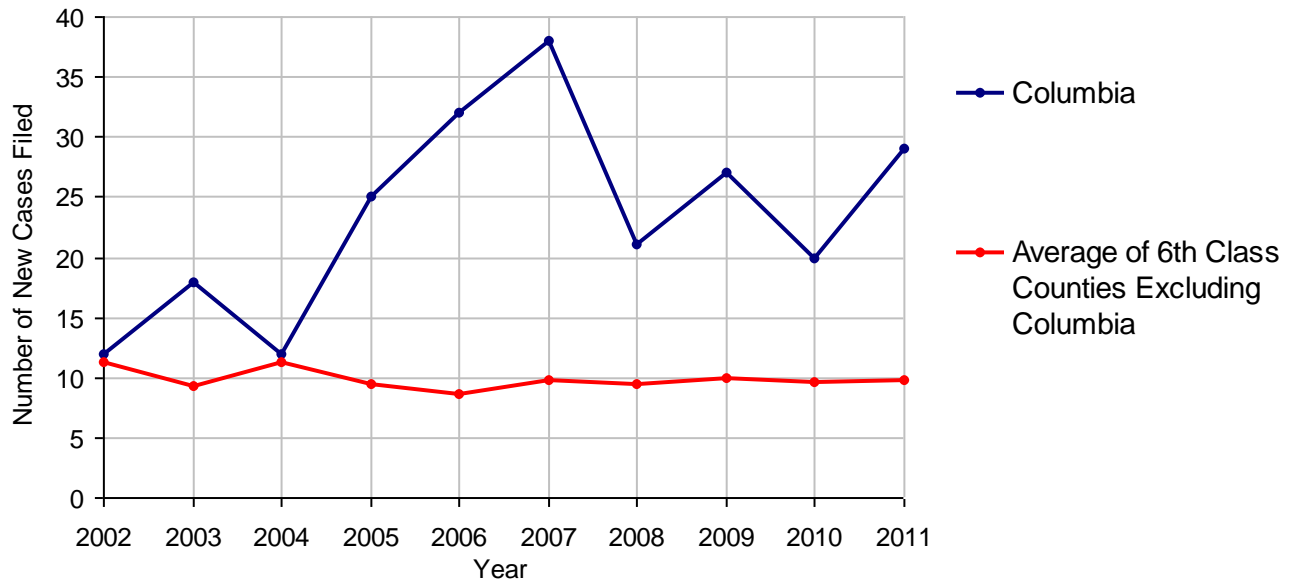
# Columbia County

2011 Population Estimate: 67,476  
 Class of County: 6th  
 No. of Common Pleas Court Judgeships: 2  
 (Columbia and Montour combined)



<b>2011 Appointment of Guardians</b>	<b>No. of Cases</b>	
Cases Pending 1/1/2011	15	
New Cases Filed in 2011	29	
<b>Cases Available for Processing</b>	<b>44</b>	
Processed By:		
Contested before a Judge	0	
Uncontested	17	44.7%
Other	21	55.3%
<b>Cases Processed</b>	<b>38</b>	<b>100.0%</b>
<b>Cases Pending 12/31/2011</b>	<b>6</b>	

**Appointment of Guardians New Cases Filed, 2002-2011**

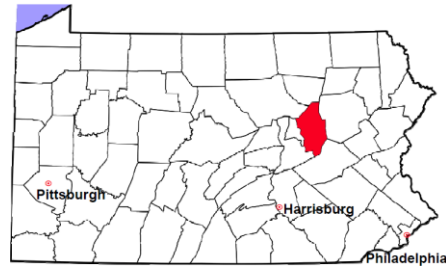


# Columbia County

2011 Population Estimate: 67,476

Class of County: 6th

No. of Common Pleas Court Judgeships: 2  
(Columbia and Montour combined)



---

## 2011 Jury Activity and Performance Measures

---

A. Juror Days	401
B. Number Sent to Voir Dire	313
Voir Dire Attendance Rate (B/A * 100)	78.1%
C. Number of Jurors Selected	140
Juror Selection Rate (C/B * 100)	44.7%

---

Note: In mid-2011, AOPC began utilizing the National Center for State Courts' Jury Managers' Toolbox for collecting jury data. This has resulted in limited jury performance measures being reported for 2011. Additional data will be available in 2012.