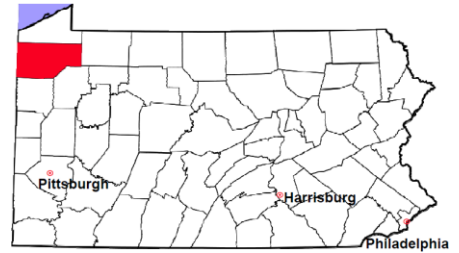


Crawford County

2011 Population Estimate: 88,740

Class of County: 6th

No. of Common Pleas Court Judgeships: 3



2011 Criminal	No. of Cases
---------------	--------------

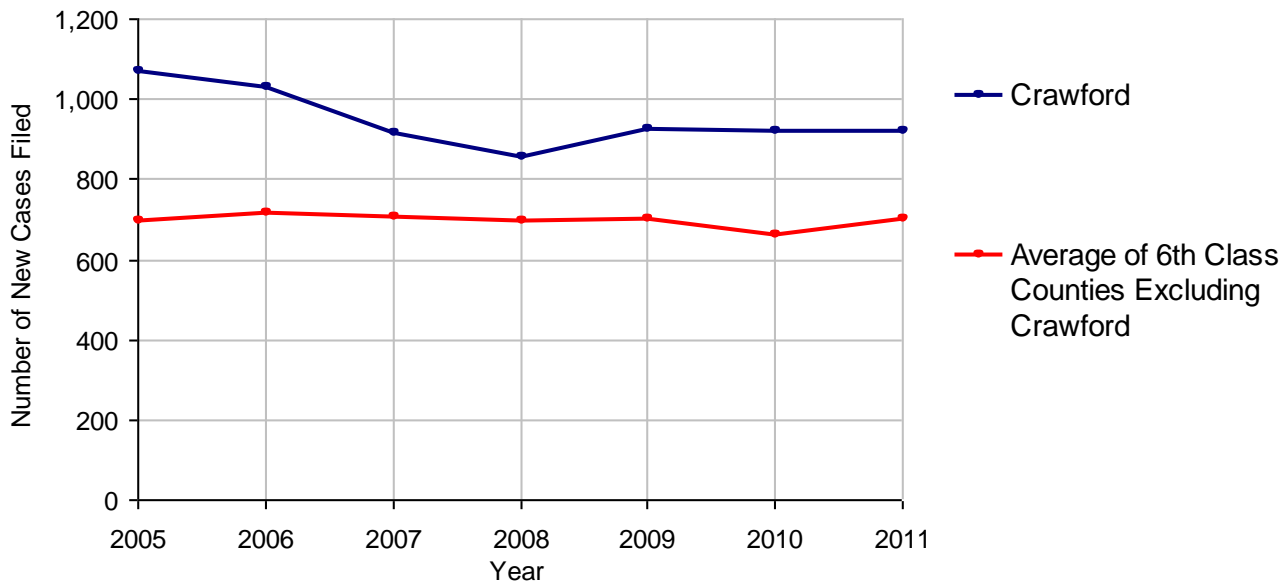
Cases Pending 1/1/2011	344
New Cases Filed in 2011	920
Reopened Cases	46
Cases Available for Disposition	1,310
Disposed by:	
Withdrawn/Dismissed	22 2.2%
ARD	0
Guilty Plea	833 84.8%
Non-Jury Trial	15 1.5%
Jury Trial	18 1.8%
Inactive	18 1.8%
Other	76 7.7%
Total Cases Disposed	982 100.0%
Cases Pending 12/31/2011	328
Cases Awaiting Sentencing	136

Data provided by CPCMS



Age of Pending Cases as of 12/31/2011		
0-60 Days	161	49.1%
61-120 Days	106	32.3%
121-180 Days	33	10.1%
181-240 Days	7	2.1%
241-300 Days	6	1.8%
301-360 Days	3	0.9%
Over 360 Days	12	3.7%
Total	328	100.0%

Criminal New Cases Filed, 2005-2011

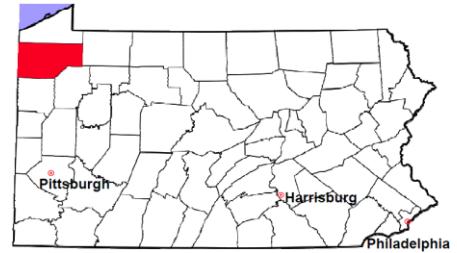


Crawford County

2011 Population Estimate: 88,740

Class of County: 6th

No. of Common Pleas Court Judgeships: 3



2011 Criminal - New Cases by Case Type



Case Type	Felony	Misdemeanor	Summary /Ungraded	Total
Person	58	79	2	139
Property	122	136	1	259
Drug	41	54	0	95
Weapon	6	5	0	11
Public Order	36	60	0	96
Motor Vehicle - DWI/DUI	0	314	0	314
Motor Vehicle - Other	1	4	1	6
Other	0	0	0	0
Total	264	652	4	920
	28.7%	70.9%	0.4%	100.0%

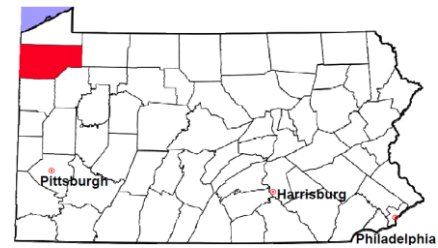
Data provided by CPCMS

Crawford County

2011 Population Estimate: 88,740

Class of County: 6th

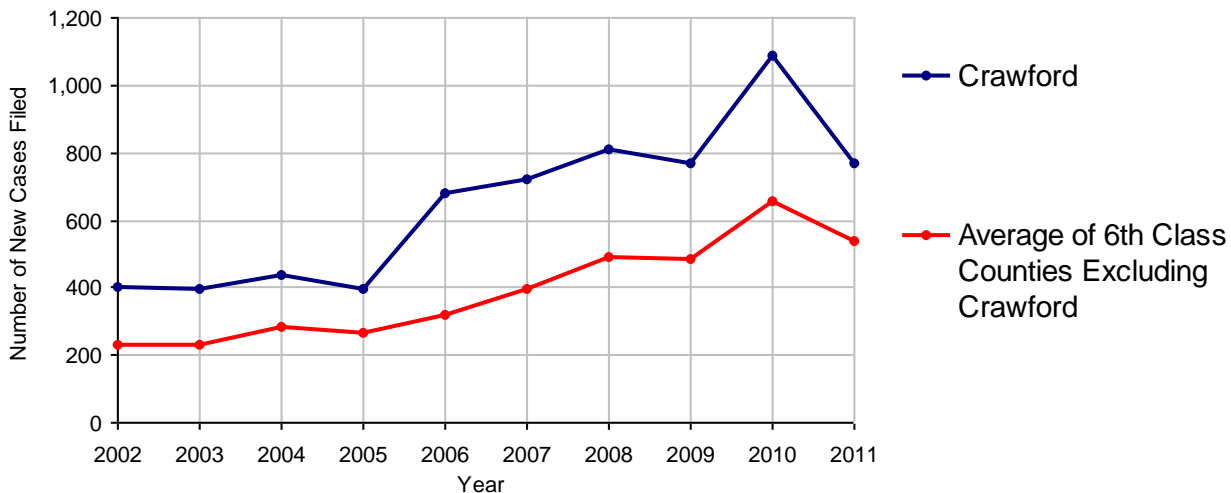
No. of Common Pleas Court Judgeships: 3



2011 Civil	Civil Action	Other	Total
Cases Pending 1/1/2011	422	3,167	3,589
Docketed Cases	500	268	768
Arbitration Appeals	0	0	0
Transferred In	0	0	0
Returned to Active	0	0	0
Cases Available for Processing	922	3,435	4,357
Disposed By:			
Default Judgments	177	93	270
Cases Decided by Arbitration Board	9	2	11
Dispositive Motions	1	0	1
Settlements	3	2	5
Moved to Inactive Status	0	0	0
Transferred/Withdrawn	4	1	5
Pa.R.J.A. 1901 Administrative Purge	0	0	0
Other	70	19	89
Jury Trial	0	0	0
Non-Jury Trial	0	0	0
Total Cases Disposed	264	117	381
Cases Pending 12/31/2011	658	3,318	3,976

Age of Pending Cases as of 12/31/2011 (Civil Action Only)		
0-6 months	226	34.3%
7-12 months	175	26.6%
13-18 months	223	33.9%
19-24 months	25	3.8%
25-30 months	1	0.2%
31-36 months	0	
37-42 months	1	0.2%
43-48 months	2	0.3%
49-54 months	0	
55-60 months	1	0.2%
61-66 months	0	
67-72 months	2	0.3%
Over 72 months	2	0.3%
Total	658	100.0%

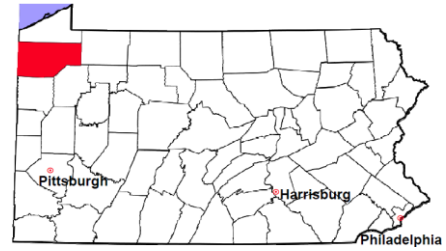
Docketed Cases, 2002-2011



Note: Prior to June 2010, docketed cases under the "Other" category were not reported. The reporting of these cases starting from June 2010 may contribute to an increase in docketed cases from 2009 to 2010.

Crawford County

2011 Population Estimate: 88,740
 Class of County: 6th
 No. of Common Pleas Court Judgeships: 3



2011 Civil - Docketed Cases Listed by Case Type

TORT (does not include mass tort)

Intentional	2
Malicious Prosecution	0
Motor Vehicle	50
Nuisance	0
Premise Liability	10
Product Liability	1
Slander/Libel/Defamation	1
Other	13

MASS TORT

Asbestos	1
Tobacco	0
Toxic Tort - DES	0
Toxic Tort - Implant	0
Toxic Waste	0
Other	0

PROFESSIONAL LIABILITY

Dental	0
Legal	0
Medical Malpractice	7
Other	2

CONTRACT

(does not include judgments)

Buyer Plaintiff	5
Debt Collection:	
Credit Card	254
Other	86
Employment Dispute:	
Discrimination	0
Other	3
Other	43

REAL PROPERTY

Ejectment*	14
Eminent Domain/ Condemnation*	1
Ground Rent	0
Landlord/Tenant Dispute	22
Mortgage Forclosures:	
Residential*	147
Commercial*	12
Partition of Real Property*	5
Quiet Title*	11
Other*	5

CIVIL APPEALS

Administrative Agencies

Board of Assessment*	5
Board of Elections*	0
Dept. of Transportation*	23
Zoning Board*	0
Statutory Appeal - Other*	3
Other*	6

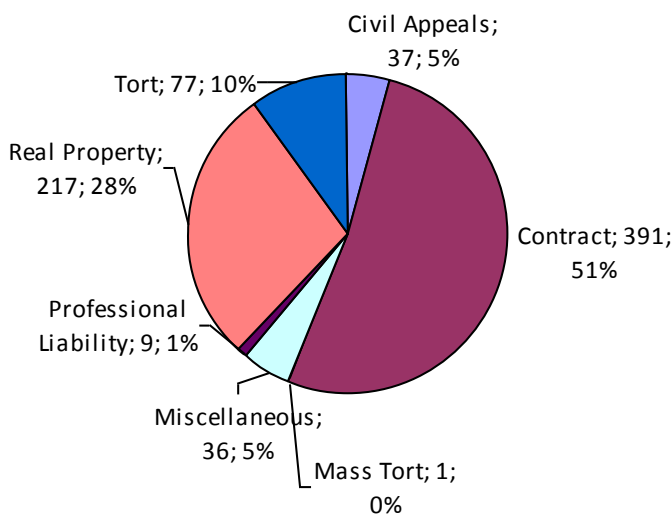
MISCELLANEOUS

Common Law/ Statutory Arbitration*	0
Declaratory Judgment*	4
Mandamus*	0
Non-Domestic Relations Restraining Order*	1
Quo Warranto*	0
Replevin*	5
Other*	26

TOTAL DOCKETED CASES:

768

* Civil Other

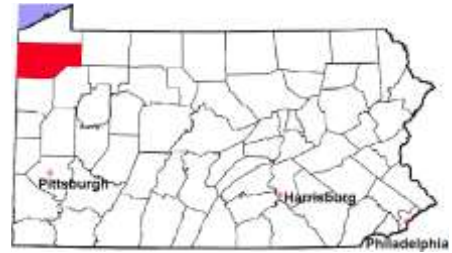


Of the Docketed Cases:

Pro Se Filings:	21	2.7%
Class Action Suits:	4	0.5%
MDJ Appeals:	54	7.0%

Crawford County

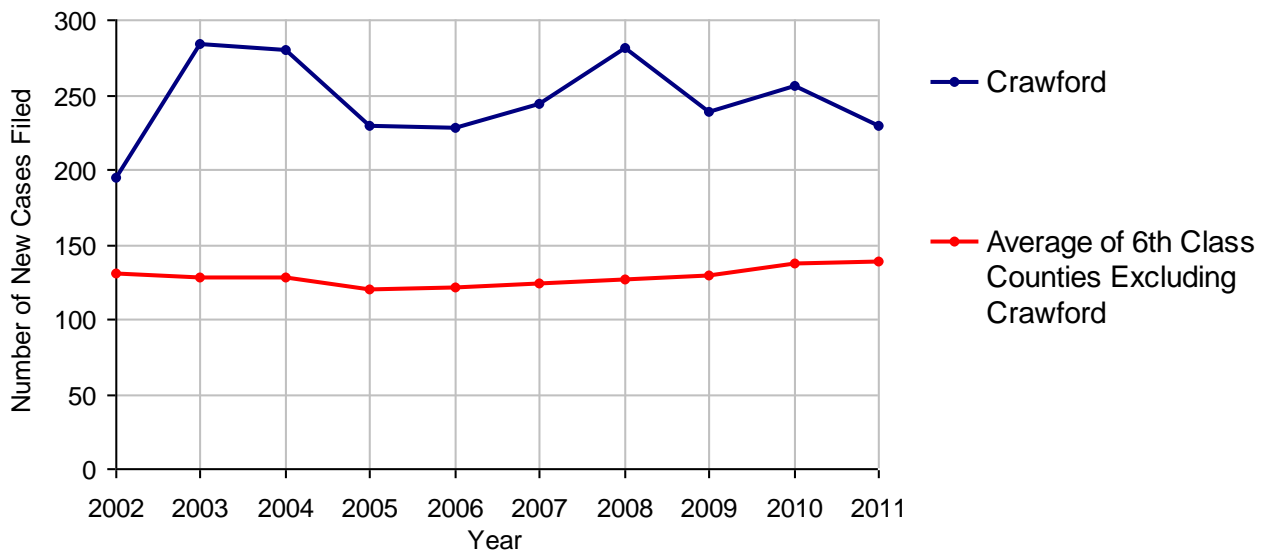
2011 Population Estimate: 88,740
 Class of County: 6th
 No. of Common Pleas Court Judgeships: 3



2011 Protection From Abuse

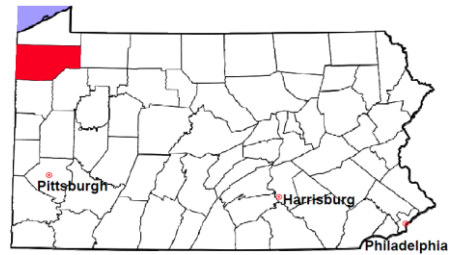
	No. of Petitions
Cases Pending 1/1/2011	17
New Cases Filed in 2011	230
<i>Of these, Petitions Requesting Temporary Orders: 230 (100.0%)</i>	
<i>Temporary Orders DENIED: 5 (2.2%), Temporary Orders GRANTED: 225 (97.8%)</i>	
Cases Available for Processing	247
Processed By:	
Temporary Order DENIED After Ex Parte Hearing and No Evidentiary Hearing Scheduled	1 0.4%
Temporary Order DISMISSED After Evidentiary Hearing and No Final Order Entered	6 2.6%
Final Order DENIED After Evidentiary Hearing Before a Judge	6 2.6%
Final Order GRANTED After Evidentiary Hearing Before a Judge	37 15.9%
Plaintiff Did Not Appear For Evidentiary Hearing	10 4.3%
Final Order by STIPULATION OR AGREEMENT Between the Parties	86 36.9%
Petition WITHDRAWN by Plaintiff	84 36.1%
TRANSFERRED to Another Jurisdiction	0
DECEASED Party	0
Other	3 1.3%
Cases Processed	233 100.0%
Cases Pending 12/31/2011	14

PFA New Cases Filed, 2002-2011

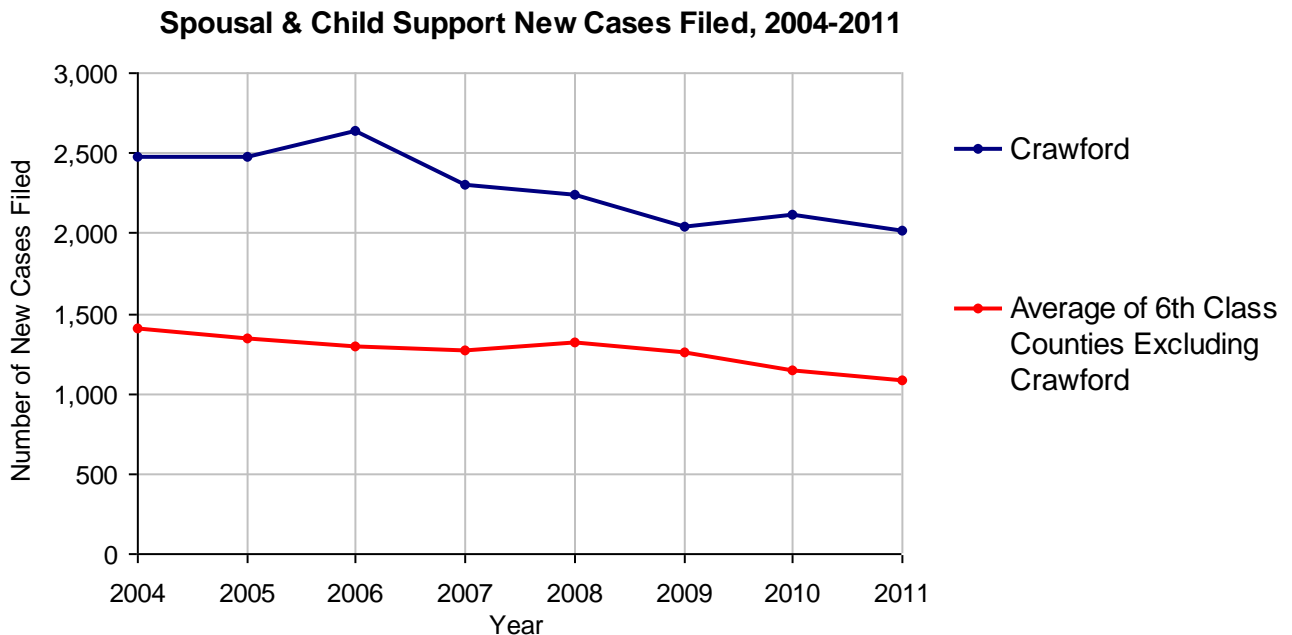


Crawford County

2011 Population Estimate: 88,740
 Class of County: 6th
 No. of Common Pleas Court Judgeships: 3



2011 Spousal & Child Support	No. of Petitions	
Cases Pending 1/1/2011	218	
New Cases Filed in 2011	2,016	
Dockets Transferred In (+)	27	
Dockets Transferred Out (-)	32	
Cases Available for Processing	2,229	
Processed By:		
Judge	69	3.4%
Intake Officer	1,975	96.6%
Hearing Officer	0	
Other	0	
Cases Processed	2,044	100.0%
Cases Pending 12/31/2011	185	

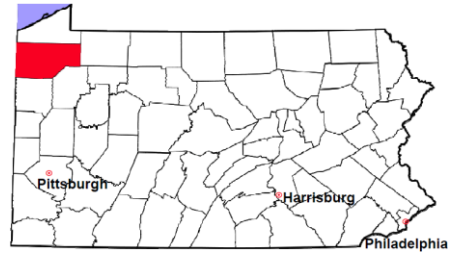


Crawford County

2011 Population Estimate: 88,740

Class of County: 6th

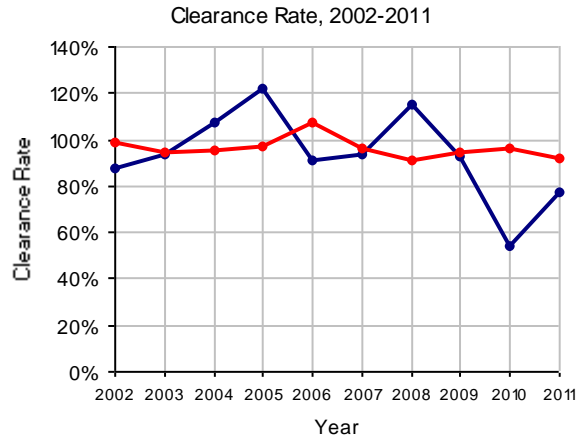
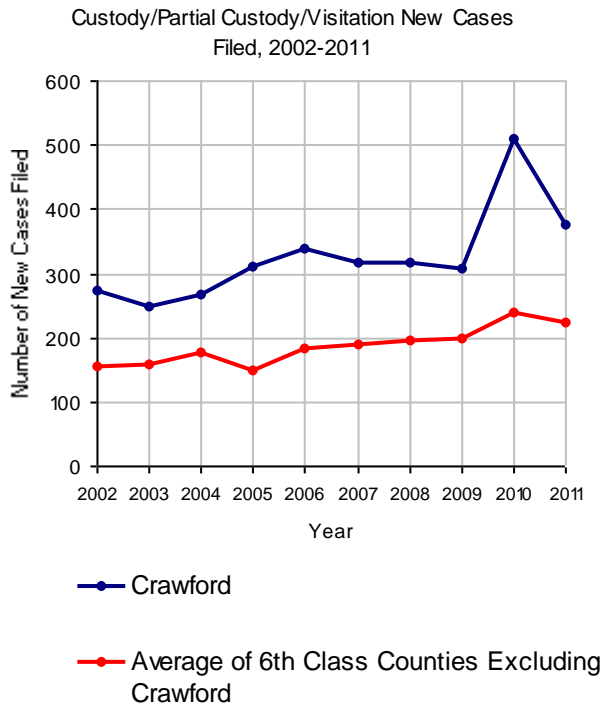
No. of Common Pleas Court Judgeships: 3



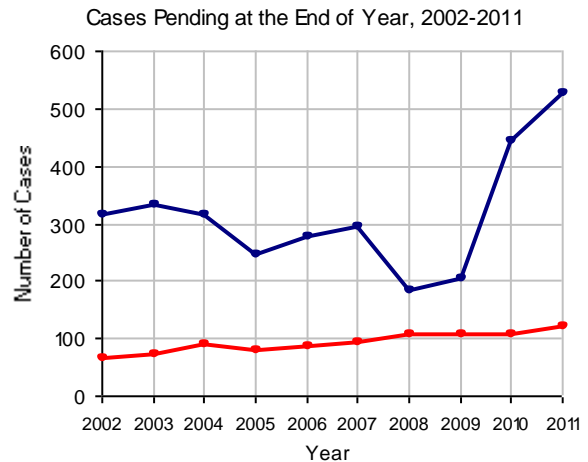
2011 Custody/Partial Custody/Visitation

No. of
Petitions

Cases Pending 1/1/2011	443
New Cases Filed in 2011	376
Cases Available for Processing	819
Processed By:	
Judge	10 3.4%
Non-Judicial Officer	212 72.9%
Other	69 23.7%
Cases Processed	291 100.0%
Cases Pending 12/31/2011	528

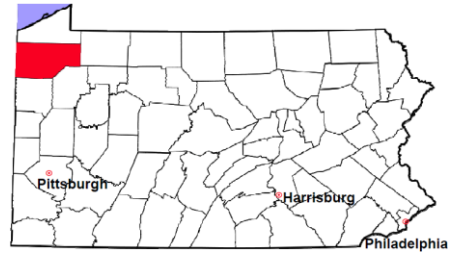


Note: Clearance Rate = Cases Processed / New Cases Filed



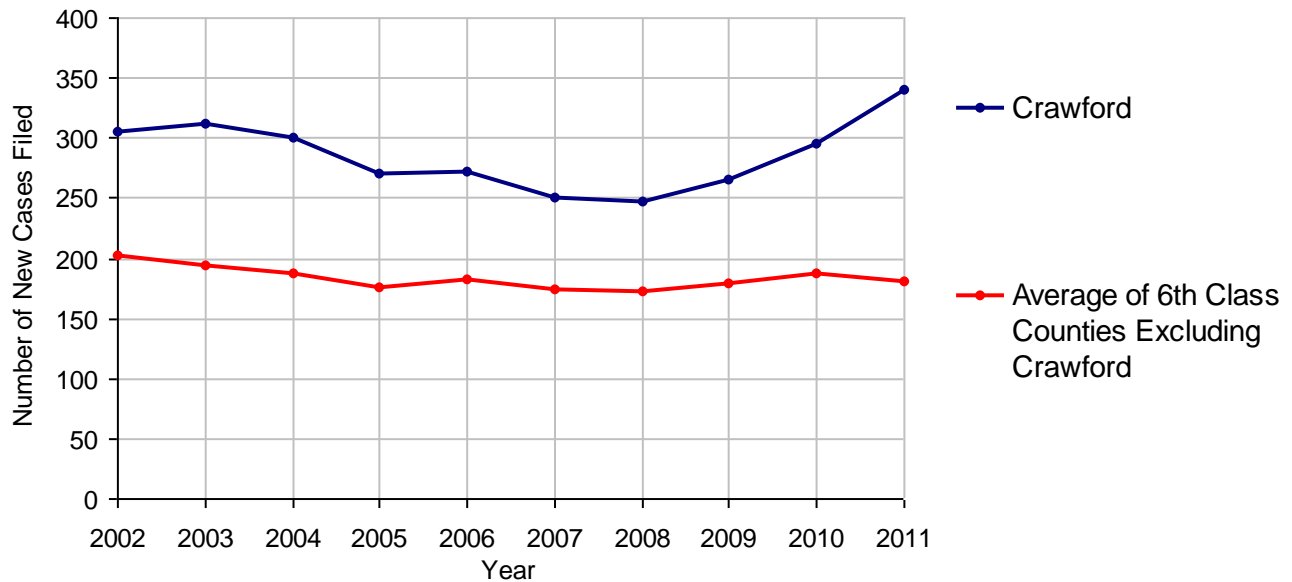
Crawford County

2011 Population Estimate: 88,740
 Class of County: 6th
 No. of Common Pleas Court Judgeships: 3



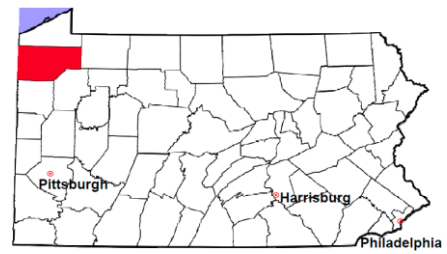
2011 Divorce	No. of Petitions	
Cases Pending 1/1/2011	522	
New Cases Filed in 2011	341	
Cases Available for Processing	863	
Processed By:		
Contested Before a Judge	0	
Contested Before a Master	5	1.6%
Uncontested	257	84.3%
Other	43	14.1%
Cases Processed	305	100.0%
Cases Pending 12/31/2011	558	

Divorce New Cases Filed, 2002-2011



Crawford County

2011 Population Estimate: 88,740
 Class of County: 6th
 No. of Common Pleas Court Judgeships: 3



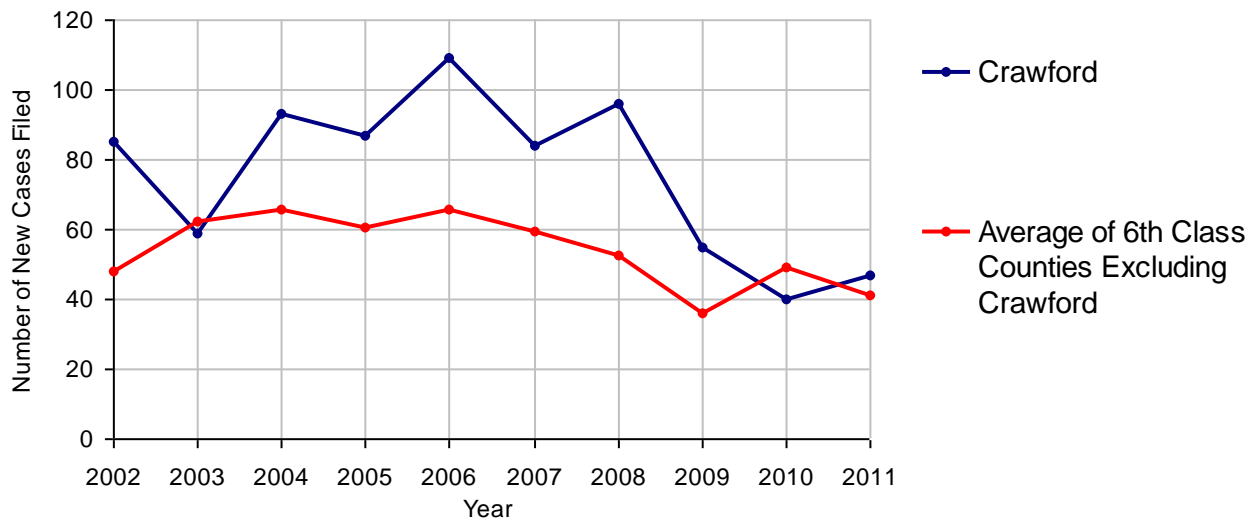
2011 Juvenile Dependency - Active Dependent Inventory



	Abuse/ Neglect	Status Offenses	Total
Cases Pending 1/1/2011	7	0	7
New Petitions Filed in 2011	45	2	47
Other	2	0	2
Total Petitions Available for Processing	54	2	56
Processed by:			
Adjudicated Dependent			
Judge	2	0	2
Master	32	1	33
Adjudicated NOT Dependent			
Judge	0	0	0
Master	3	0	3
Withdrawn/Dismissed/Inactive	0	0	0
Other	2	1	3
Total Petitions Processed	39	2	41
Cases Pending 12/31/2011	15	0	15

Data provided by CPCMS

Abuse/Neglect and Status Offenses New Cases Filed, 2002-2011



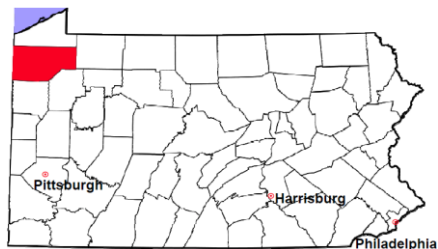
Note: Dependency data for 2002-2010 were collected manually. Dependency data for 2011 were provided by CPCMS.

Crawford County

2011 Population Estimate: 88,740

Class of County: 6th

No. of Common Pleas Court Judgeships: 3



2011 Juvenile Dependency - Adjudicated Dependent Inventory



	Abuse/ Neglect	Status Offenses	Total	
Cases Pending 1/1/2011	164	1	165	
New Adjudicated Dependent Cases	34	1	35	
Other	3	1	4	
Total Adjudicated Dependent Cases	201	3	204	
<u>Court Supervision Terminated:</u>				
Family Reunification	18	0	18	43.9%
Adoption	3	0	3	7.3%
Placement with a Relative/Guardian	2	0	2	4.9%
Aged Out	14	0	14	34.1%
Other Permanency Outcomes*	2	0	2	4.9%
Other**	2	0	2	4.9%
Total Adjudicated Dependent Cases Terminated	41	0	41	100.0%
Cases Pending 12/31/2011	160	3	163	

Data provided by CPCMS

* Other Permanency Outcomes include: adjudicated delinquent, death due to natural causes, emancipation, permanent living arrangement, and parent has come forward.

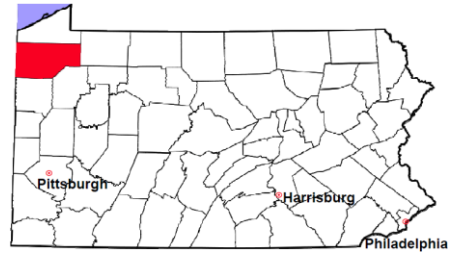
** Other includes cases where Court Supervision is terminated due to transfer out of jurisdiction, withdrawal and administrative closures.

Crawford County

2011 Population Estimate: 88,740

Class of County: 6th

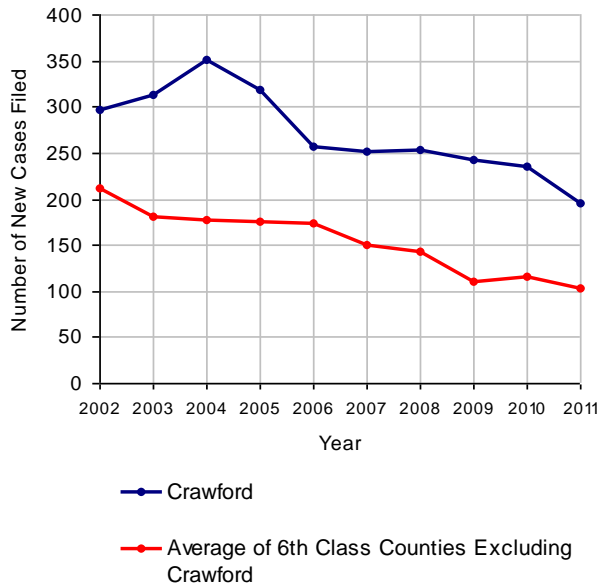
No. of Common Pleas Court Judgeships: 3



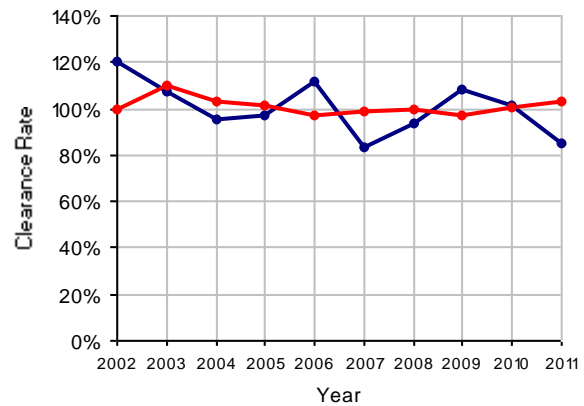
2011 Juvenile Delinquency

	No. of Cases
Cases Pending 1/1/2011	62
New Cases Filed in 2011	196
Cases Available for Processing	258
Processed By:	
Judge	113 67.7%
Non-Judicial Officer	54 32.3%
Other	0
Cases Processed	167 100.0%
Cases Pending 12/31/2011	91

Juvenile Delinquency New Cases Filed, 2002-2011

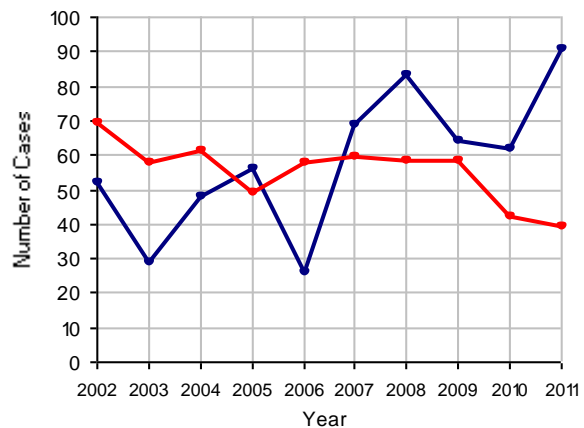


Clearance Rate, 2002-2011



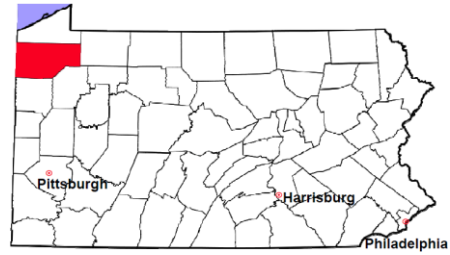
Note: Clearance Rate = Cases Processed / New Cases Filed

Cases Pending at the End of Year, 2002-2011



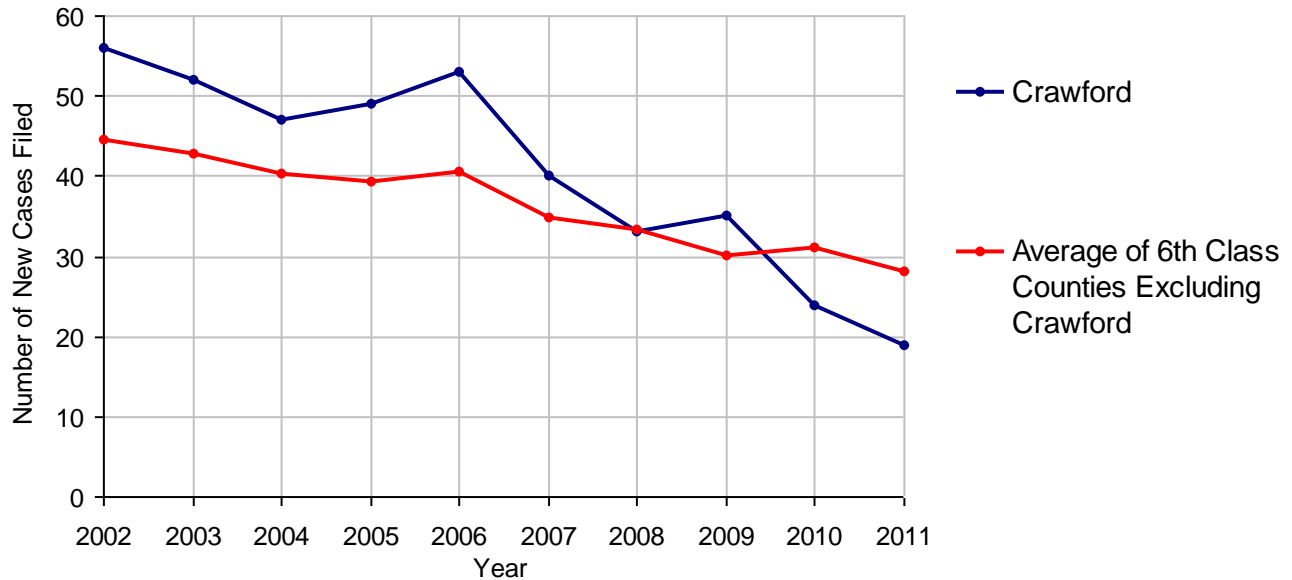
Crawford County

2011 Population Estimate: 88,740
 Class of County: 6th
 No. of Common Pleas Court Judgeships: 3



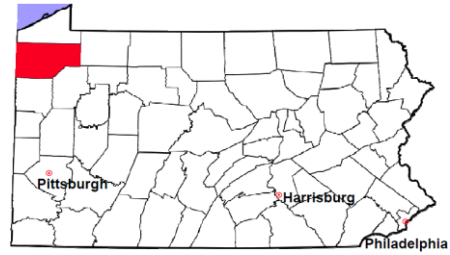
2011 Accounts	No. of Cases	
Cases Pending 1/1/2011	29	
New Cases Filed in 2011	19	
Cases Available for Processing	48	
Processed By:		
Contested before a Judge	0	
Contested before a Non-judicial Officer	0	
Uncontested	24	100.0%
Other	0	
Cases Processed	24	100.0%
Cases Pending 12/31/2011	24	

Accounts New Cases Filed, 2002-2011



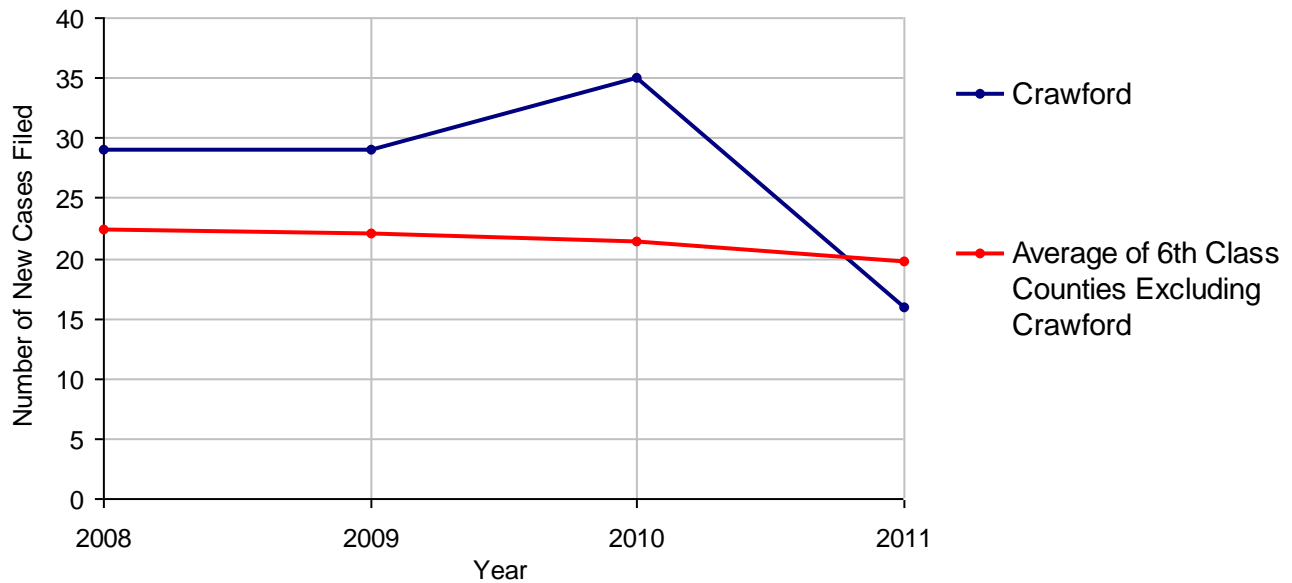
Crawford County

2011 Population Estimate: 88,740
 Class of County: 6th
 No. of Common Pleas Court Judgeships: 3



2011 Adoptions		No. of Cases	
Cases Pending 1/1/2011		2	
New Cases Filed in 2011		16	
Cases Available for Processing		18	
Processed By:			
Contested before a Judge	Granted	0	
	Denied	0	
Uncontested	Granted	13	100.0%
	Denied	0	
Other		0	
Cases Processed		13	100.0%
Cases Pending 12/31/2011		5	

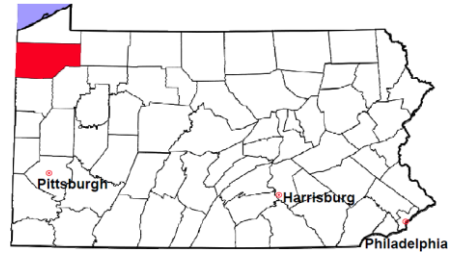
Adoptions New Cases Filed, 2008-2011



Note: Prior to 2008, each petition was counted as one new case, regardless of the number of children listed on the petition. Starting in 2008, each child listed on a petition is counted as a separate case. Therefore, statistics for the years since 2008 should not be compared to those for the years prior to 2008.

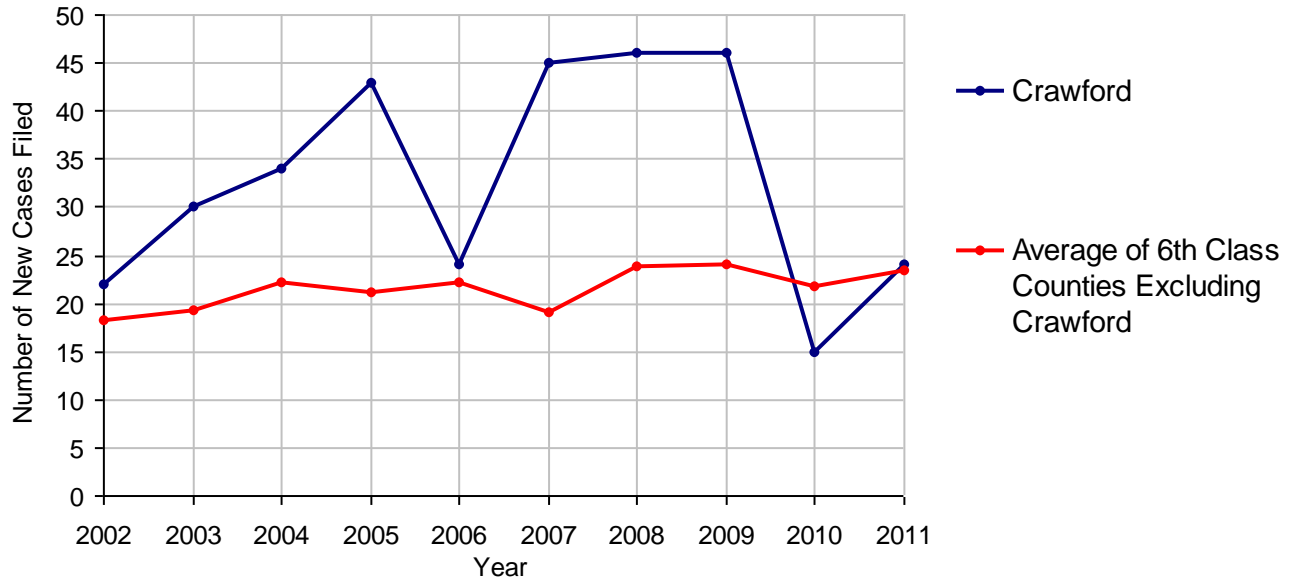
Crawford County

2011 Population Estimate: 88,740
 Class of County: 6th
 No. of Common Pleas Court Judgeships: 3



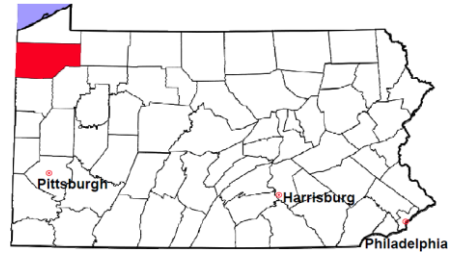
2011 Relinquishments/Terminations	No. of Cases
Cases Pending 1/1/2011	5
New Cases Filed in 2011	24
Cases Available for Processing	29
Processed By:	
Contested before a Judge	2 8.3%
Uncontested	22 91.7%
Other	0
Cases Processed	24 100.0%
Cases Pending 12/31/2011	5

Relinquishments/Terminations New Cases Filed, 2002-2011



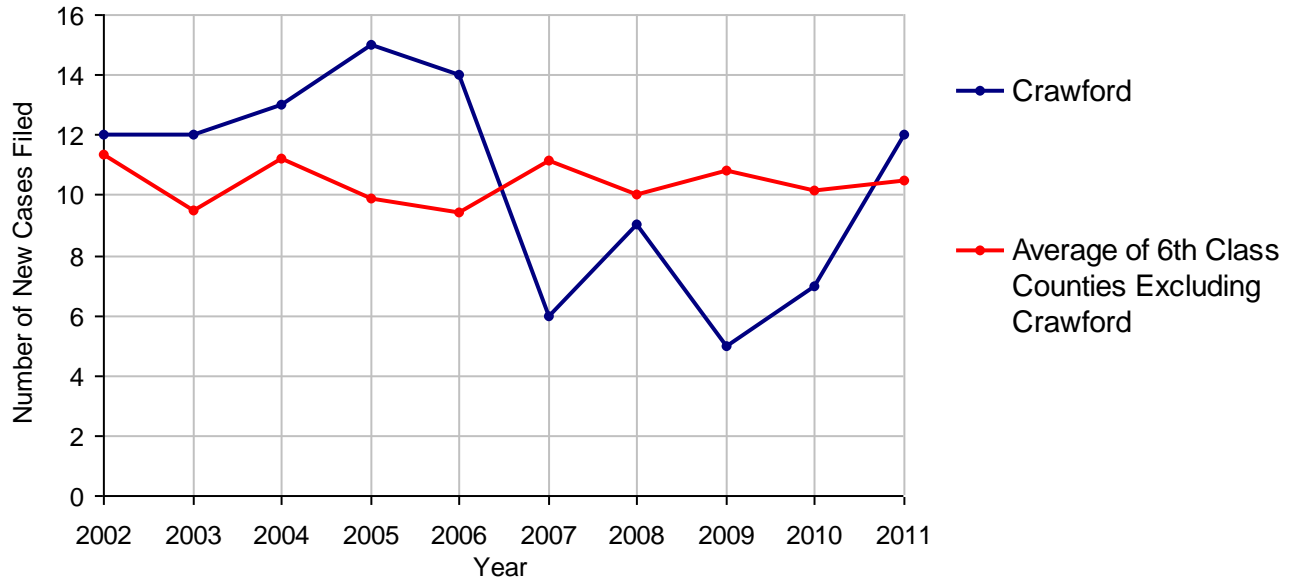
Crawford County

2011 Population Estimate: 88,740
 Class of County: 6th
 No. of Common Pleas Court Judgeships: 3



2011 Appointment of Guardians	No. of Cases	
Cases Pending 1/1/2011	3	
New Cases Filed in 2011	12	
Cases Available for Processing	15	
Processed By:		
Contested before a Judge	0	
Uncontested	8	88.9%
Other	1	11.1%
Cases Processed	9	100.0%
Cases Pending 12/31/2011	6	

Appointment of Guardians New Cases Filed, 2002-2011

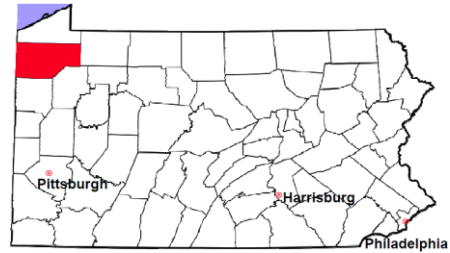


Crawford County

2011 Population Estimate: 88,740

Class of County: 6th

No. of Common Pleas Court Judgeships: 3



2011 Jury Activity and Performance Measures

A. Juror Days	1,059
B. Number Sent to Voir Dire	660
Voir Dire Attendance Rate (B/A * 100)	62.3%
C. Number of Jurors Selected	269
Juror Selection Rate (C/B * 100)	40.8%

Note: In mid-2011, AOPC began utilizing the National Center for State Courts' Jury Managers' Toolbox for collecting jury data. This has resulted in limited jury performance measures being reported for 2011. Additional data will be available in 2012.