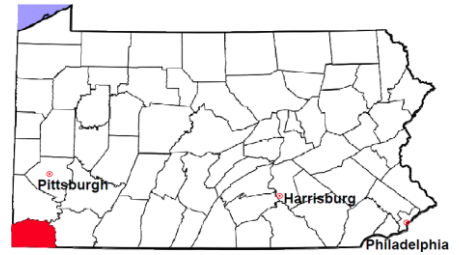


Greene County

2011 Population Estimate: 38,623

Class of County: 6th

No. of Common Pleas Court Judgeships: 2



2011 Criminal	No. of Cases
---------------	--------------

Cases Pending 1/1/2011	192
New Cases Filed in 2011	582
Reopened Cases	20
Cases Available for Disposition	794

Disposed by:

Withdrawn/Dismissed	15	2.6%
ARD	142	24.7%
Guilty Plea	330	57.4%
Non-Jury Trial	9	1.6%
Jury Trial	23	4.0%
Inactive	38	6.6%
Other	18	3.1%
Total Cases Disposed	575	100.0%

Cases Pending 12/31/2011 **219**

Cases Awaiting Sentencing 28

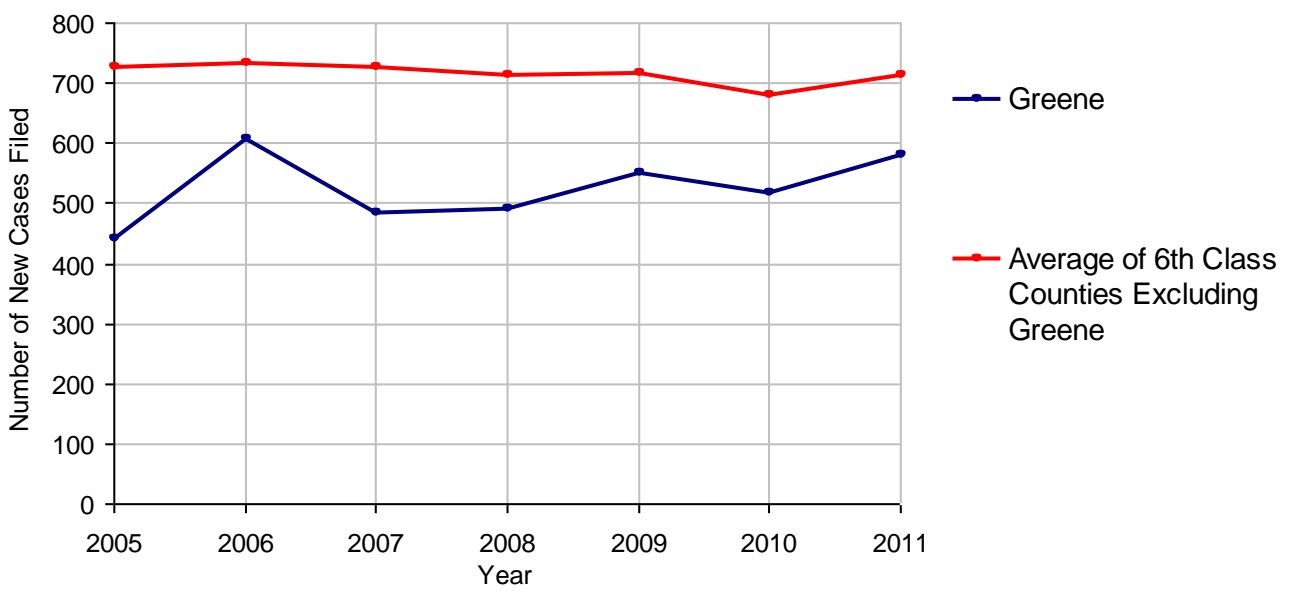
Data provided by CPCMS



Age of Pending Cases as of 12/31/2011

0-60 Days	61	27.9%
61-120 Days	74	33.8%
121-180 Days	54	24.7%
181-240 Days	9	4.1%
241-300 Days	5	2.3%
301-360 Days	8	3.7%
Over 360 Days	8	3.7%
Total	219	100.0%

Criminal New Cases Filed, 2005-2011

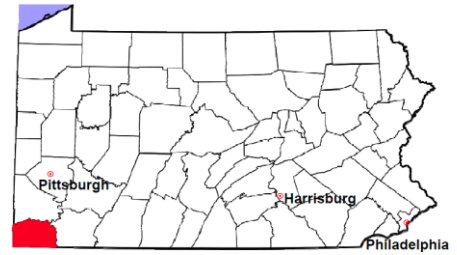


Greene County

2011 Population Estimate: 38,623

Class of County: 6th

No. of Common Pleas Court Judgeships: 2



2011 Criminal - New Cases by Case Type

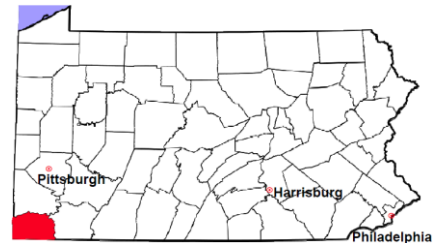


Case Type	Felony	Misdemeanor	Summary /Ungraded	Total
Person	22	18	0	40
Property	74	74	0	148
Drug	52	31	0	83
Weapon	1	2	0	3
Public Order	39	33	0	72
Motor Vehicle - DWI/DUI	0	234	0	234
Motor Vehicle - Other	0	2	0	2
Other	0	0	0	0
Total	188	394	0	582
	32.3%	67.7%		100.0%

Data provided by CPCMS

Greene County

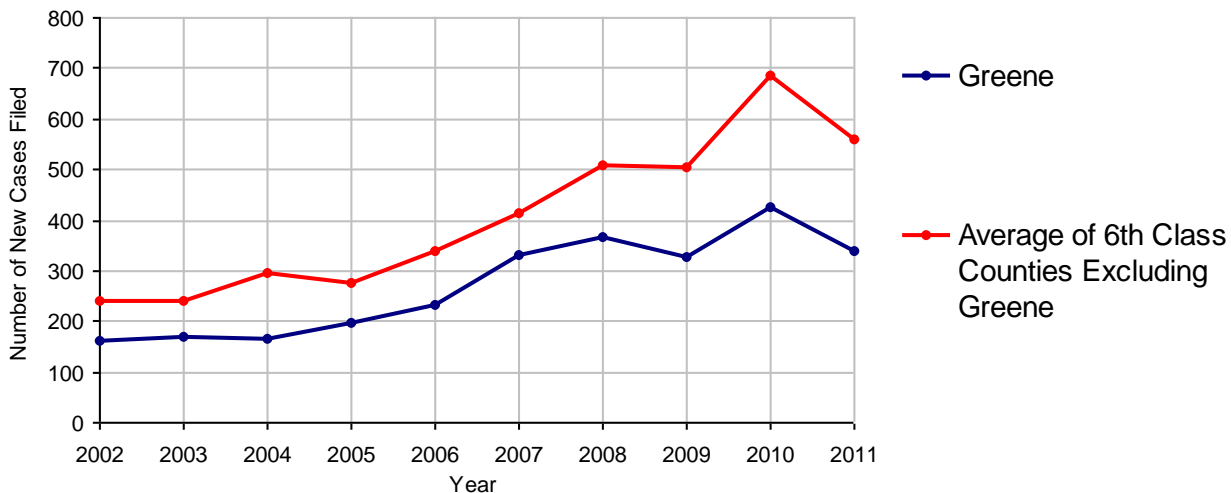
2011 Population Estimate: 38,623
 Class of County: 6th
 No. of Common Pleas Court Judgeships: 2



2011 Civil	Civil Action	Other	Total
Cases Pending 1/1/2011	238	160	398
Docketed Cases	138	200	338
Arbitration Appeals	2	0	2
Transferred In	2	0	2
Returned to Active	0	0	0
Cases Available for Processing	380	360	740
Disposed By:			
Default Judgments	129	0	129
Cases Decided by Arbitration Board	11	0	11
Dispositive Motions	0	0	0
Settlements	143	0	143
Moved to Inactive Status	0	0	0
Transferred/Withdrawn	0	0	0
Pa.R.J.A. 1901 Administrative Purge	85	0	85
Other	0	0	0
Jury Trial	3	0	3
Non-Jury Trial	1	0	1
Total Cases Disposed	372	0	372
Cases Pending 12/31/2011	8	360	368

Age of Pending Cases as of 12/31/2011 (Civil Action Only)		
0-6 months	0	
7-12 months	4	50.0%
13-18 months	4	50.0%
19-24 months	0	
25-30 months	0	
31-36 months	0	
37-42 months	0	
43-48 months	0	
49-54 months	0	
55-60 months	0	
61-66 months	0	
67-72 months	0	
Over 72 months	0	
Total	8	100.0%

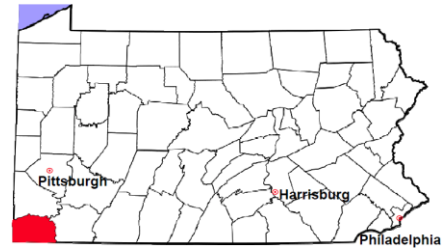
Docketed Cases, 2002-2011



Note: Prior to June 2010, docketed cases under the "Other" category were not reported. The reporting of these cases starting from June 2010 may contribute to an increase in docketed cases from 2009 to 2010.

Greene County

2011 Population Estimate: 38,623
 Class of County: 6th
 No. of Common Pleas Court Judgeships: 2



2011 Civil - Docketed Cases Listed by Case Type

TORT (does not include mass tort)

Intentional	2
Malicious Prosecution	0
Motor Vehicle	8
Nuisance	0
Premise Liability	4
Product Liability	1
Slander/Libel/Defamation	0
Other	3

MASS TORT

Asbestos	0
Tobacco	0
Toxic Tort - DES	0
Toxic Tort - Implant	0
Toxic Waste	0
Other	0

PROFESSIONAL LIABILITY

Dental	0
Legal	0
Medical Malpractice	1
Other	0

CONTRACT

(does not include judgments)

Buyer Plaintiff	1
Debt Collection:	
Credit Card	76
Debt Collection: Other	25
Employment Dispute:	
Discrimination	0
Employment Dispute: Other	1
Other	14

REAL PROPERTY

Ejectment*	6
Eminent Domain/ Condemnation*	3
Ground Rent	0
Landlord/Tenant Dispute	2
Mortgage Forclosures:	
Residential*	33
Commercial*	94
Partition of Real Property*	1
Quiet Title*	13
Other*	3

CIVIL APPEALS

Administrative Agencies

Board of Assessment*	1
Board of Elections*	0
Dept. of Transportation*	18
Zoning Board*	2
Statutory Appeal - Other*	0
Other*	20

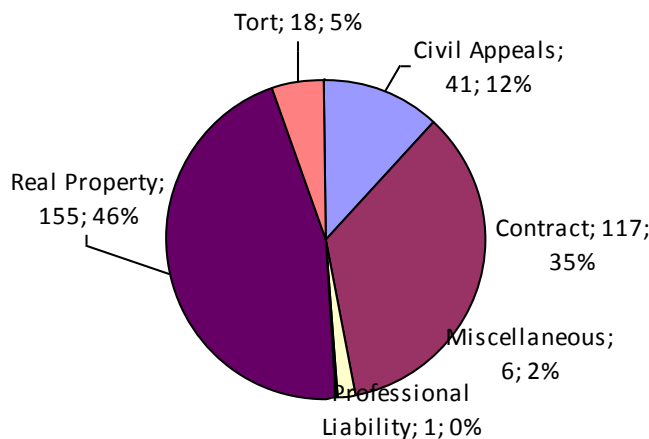
MISCELLANEOUS

Common Law/ Statutory Arbitration*	0
Declaratory Judgment*	1
Mandamus*	0
Non-Domestic Relations Restraining Order*	0
Quo Warranto*	0
Replevin*	3
Other*	2

TOTAL DOCKETED CASES:

338

* Civil Other

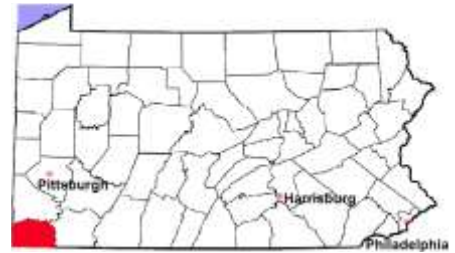


Of the Docketed Cases:

Pro Se Filings:	0
Class Action Suits:	0
MDJ Appeals:	1 0.3%

Greene County

2011 Population Estimate: 38,623
 Class of County: 6th
 No. of Common Pleas Court Judgeships: 2

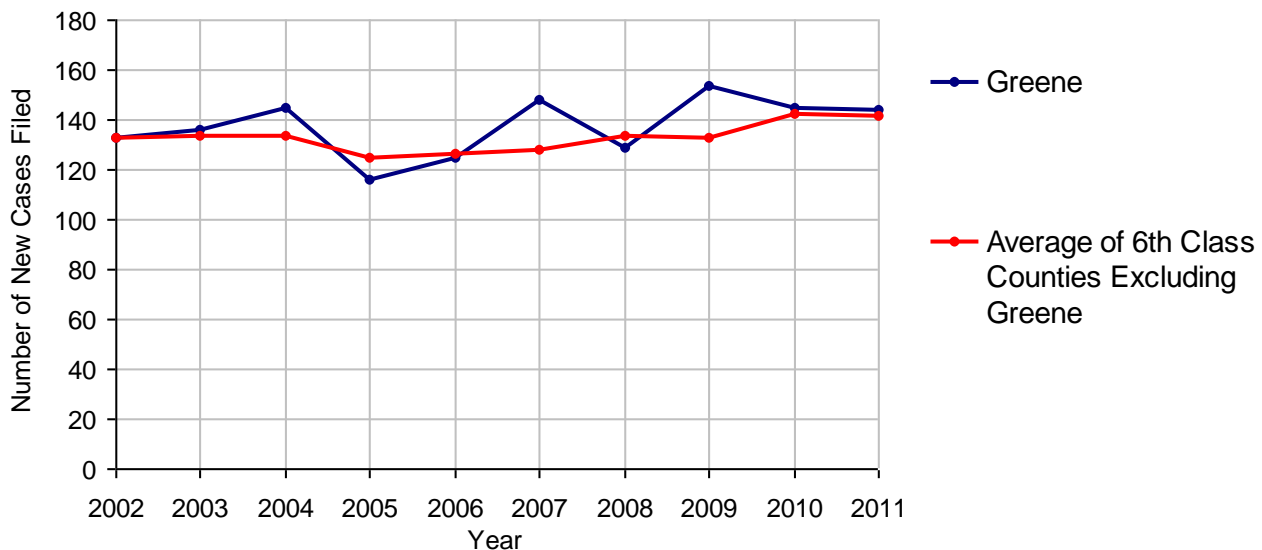


2011 Protection From Abuse

**No. of
Petitions**

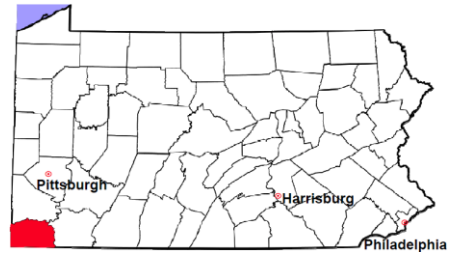
Cases Pending 1/1/2011	0
New Cases Filed in 2011	144
<i>Of these, Petitions Requesting Temporary Orders: 144 (100.0%)</i>	
<i>Temporary Orders DENIED: 1 (0.7%), Temporary Orders GRANTED: 143 (99.3%)</i>	
Cases Available for Processing	144
Processed By:	
Temporary Order DENIED After Ex Parte Hearing and No Evidentiary Hearing Scheduled	1 0.7%
Temporary Order DISMISSED After Evidentiary Hearing and No Final Order Entered	0
Final Order DENIED After Evidentiary Hearing Before a Judge	0
Final Order GRANTED After Evidentiary Hearing Before a Judge	0
Plaintiff Did Not Appear For Evidentiary Hearing	0
Final Order by STIPULATION OR AGREEMENT Between the Parties	62 45.3%
Petition WITHDRAWN by Plaintiff	69 50.4%
TRANSFERRED to Another Jurisdiction	0
DECEASED Party	0
Other	5 3.6%
Cases Processed	137 100.0%
Cases Pending 12/31/2011	7

PFA New Cases Filed, 2002-2011

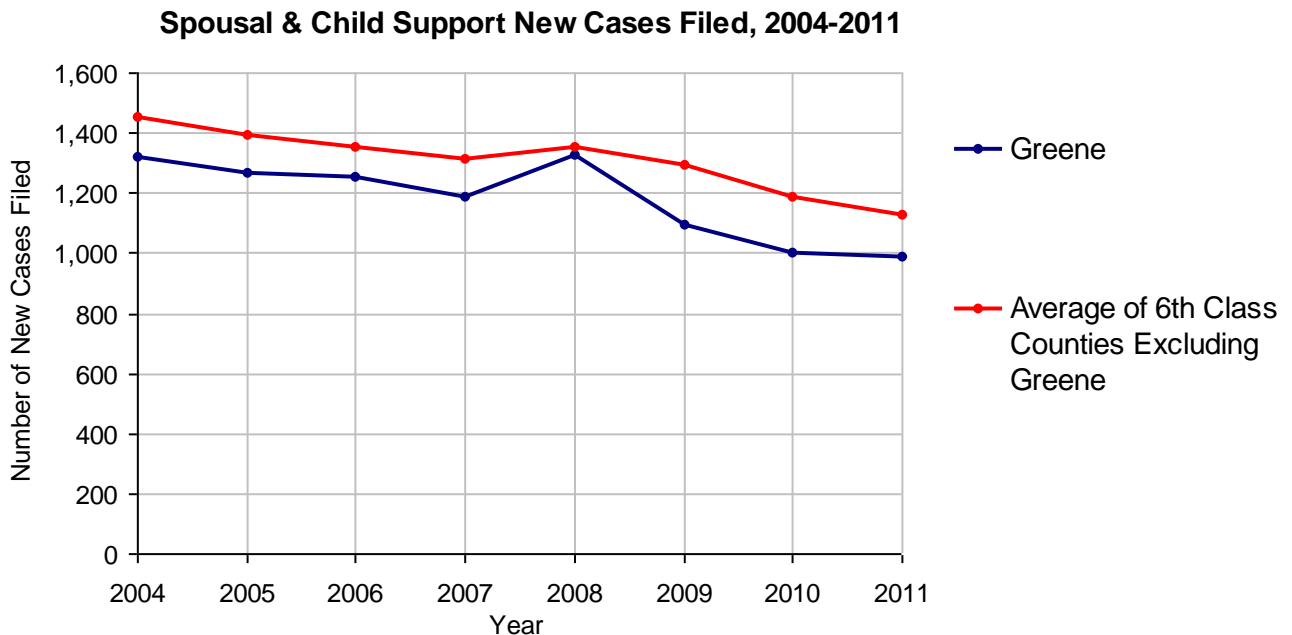


Greene County

2011 Population Estimate: 38,623
 Class of County: 6th
 No. of Common Pleas Court Judgeships: 2



2011 Spousal & Child Support	No. of Petitions
Cases Pending 1/1/2011	129
New Cases Filed in 2011	987
Dockets Transferred In (+)	9
Dockets Transferred Out (-)	12
Cases Available for Processing	1,113
Processed By:	
Judge	57 5.9%
Intake Officer	917 94.1%
Hearing Officer	0
Other	0
Cases Processed	974 100.0%
Cases Pending 12/31/2011	139

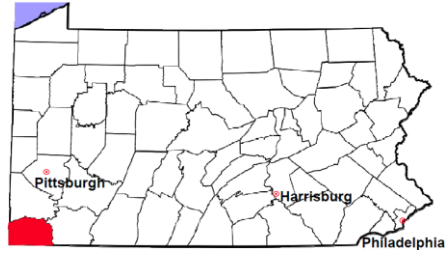


Greene County

2011 Population Estimate: 38,623

Class of County: 6th

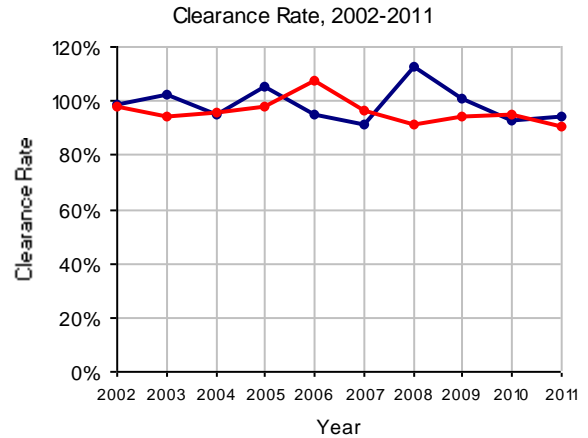
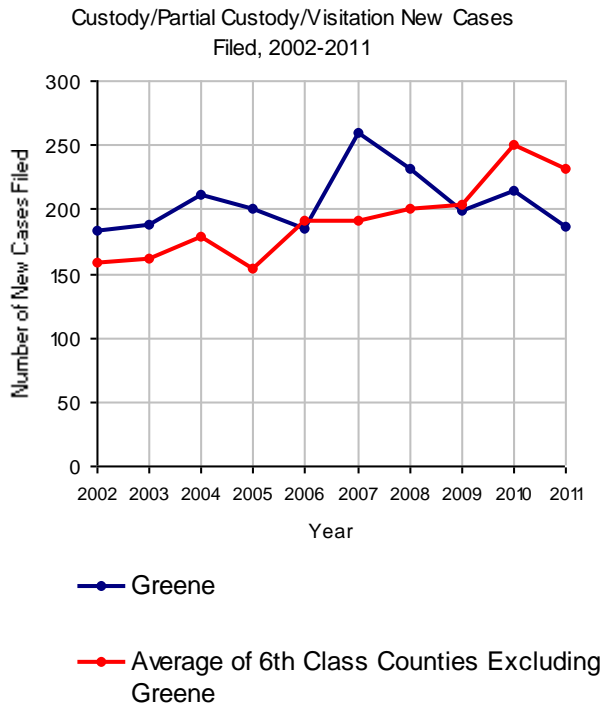
No. of Common Pleas Court Judgeships: 2



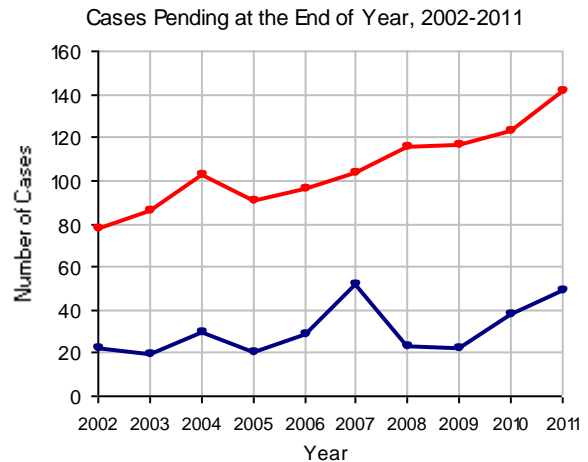
2011 Custody/Partial Custody/Visitation

No. of
Petitions

Cases Pending 1/1/2011	38
New Cases Filed in 2011	186
Cases Available for Processing	224
Processed By:	
Judge	16 9.1%
Non-Judicial Officer	155 88.6%
Other	4 2.3%
Cases Processed	175 100.0%
Cases Pending 12/31/2011	49

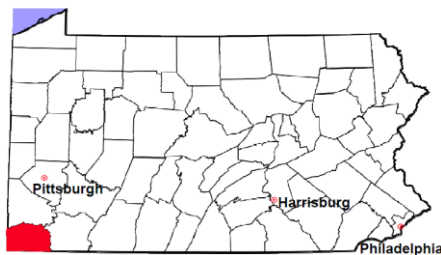


Note: Clearance Rate = Cases Processed / New Cases Filed



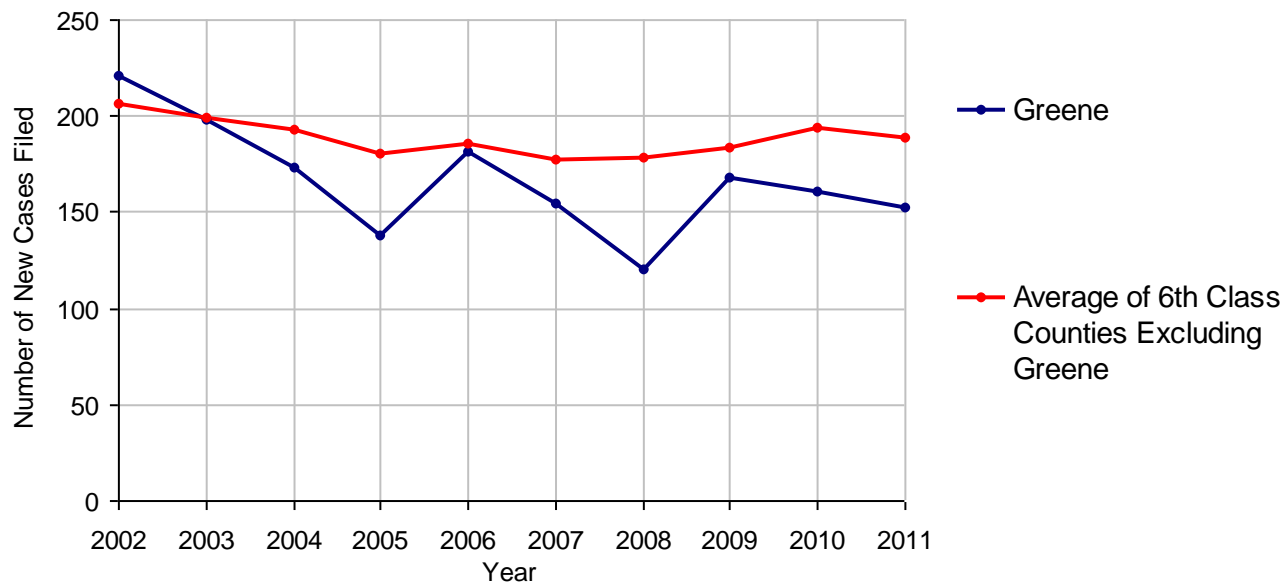
Greene County

2011 Population Estimate: 38,623
 Class of County: 6th
 No. of Common Pleas Court Judgeships: 2



2011 Divorce	No. of Petitions	
Cases Pending 1/1/2011	161	
New Cases Filed in 2011	152	
Cases Available for Processing	313	
Processed By:		
Contested Before a Judge	0	
Contested Before a Master	3	1.8%
Uncontested	142	84.0%
Other	24	14.2%
Cases Processed	169	100.0%
Cases Pending 12/31/2011	144	

Divorce New Cases Filed, 2002-2011

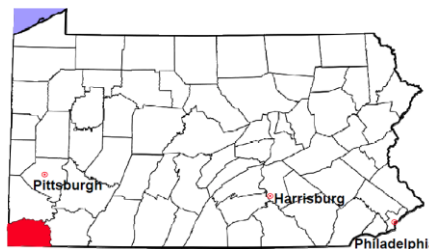


Greene County

2011 Population Estimate: 38,623

Class of County: 6th

No. of Common Pleas Court Judgeships: 2



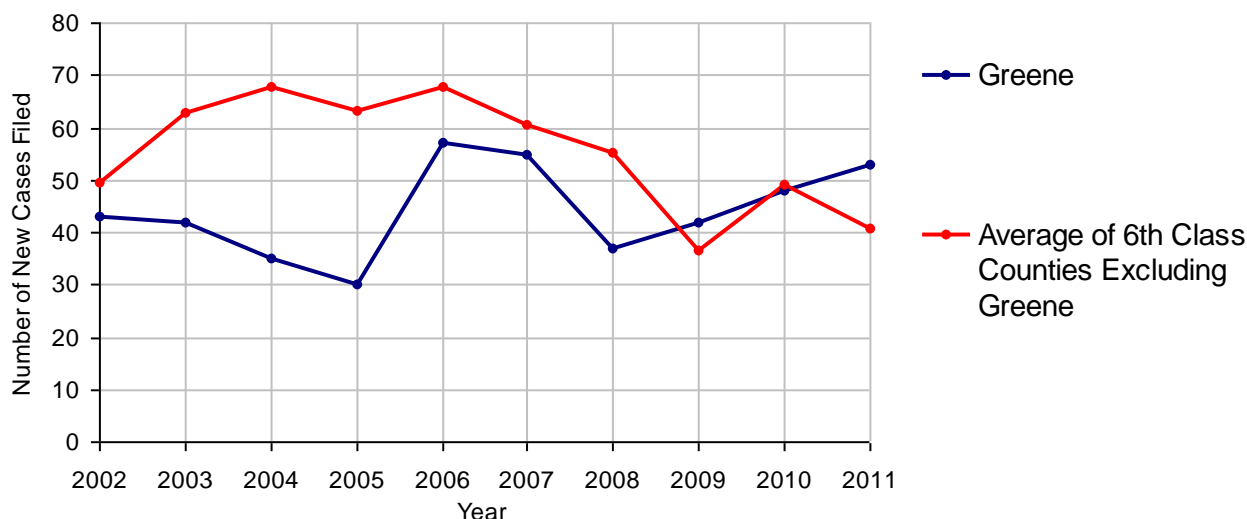
2011 Juvenile Dependency - Active Dependent Inventory



	Abuse/ Neglect	Status Offenses	Total
Cases Pending 1/1/2011	1	0	1
New Petitions Filed in 2011	46	7	53
Other	3	0	3
Total Petitions Available for Processing	50	7	57
Processed by:			
Adjudicated Dependent			
Judge	40	5	45
Master	0	0	0
Adjudicated NOT Dependent			
Judge	0	0	0
Master	0	0	0
Withdrawn/Dismissed/Inactive	2	0	2
Other	5	1	6
Total Petitions Processed	47	6	53
Cases Pending 12/31/2011	3	1	4

Data provided by CPCMS

Abuse/Neglect and Status Offenses New Cases Filed, 2002-2011



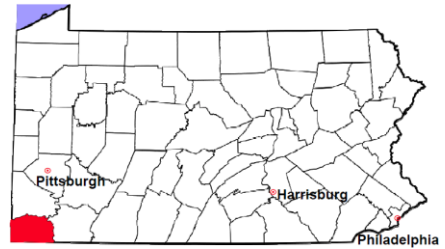
Note: Dependency data for 2002-2010 were collected manually. Dependency data for 2011 were provided by CPCMS.

Greene County

2011 Population Estimate: 38,623

Class of County: 6th

No. of Common Pleas Court Judgeships: 2



2011 Juvenile Dependency - Adjudicated Dependent Inventory

	Abuse/ Neglect	Status Offenses	Total	
Cases Pending 1/1/2011	63	5	68	
New Adjudicated Dependent Cases	40	5	45	
Other	1	1	2	
Total Adjudicated Dependent Cases	104	11	115	
<u>Court Supervision Terminated:</u>				
Family Reunification	0	0	0	
Adoption	0	0	0	
Placement with a Relative/Guardian	14	3	17	56.7%
Aged Out	3	1	4	13.3%
Other Permanency Outcomes*	1	0	1	3.3%
Other**	8	0	8	26.7%
Total Adjudicated Dependent Cases Terminated	26	4	30	100.0%
Cases Pending 12/31/2011	78	7	85	

Data provided by CPCMS

* Other Permanency Outcomes include: adjudicated delinquent, death due to natural causes, emancipation, permanent living arrangement, and parent has come forward.

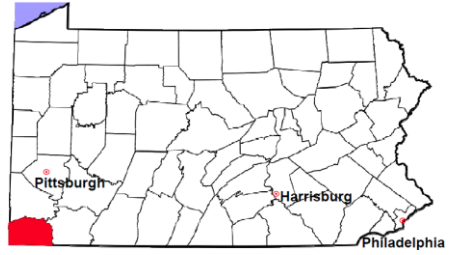
** Other includes cases where Court Supervision is terminated due to transfer out of jurisdiction, withdrawal and administrative closures.

Greene County

2011 Population Estimate: 38,623

Class of County: 6th

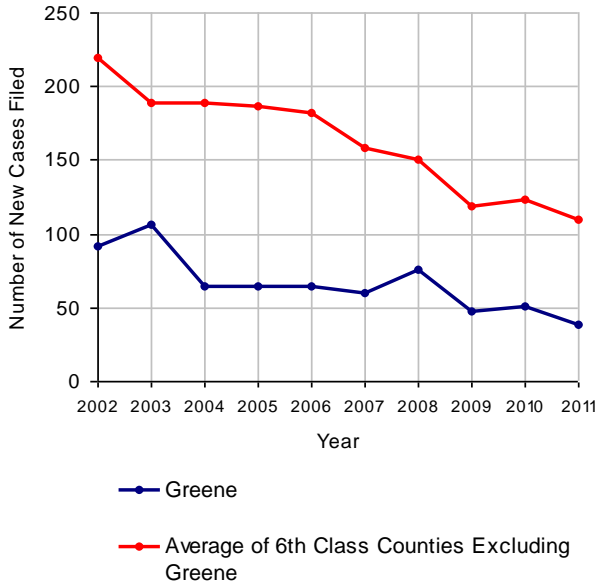
No. of Common Pleas Court Judgeships: 2



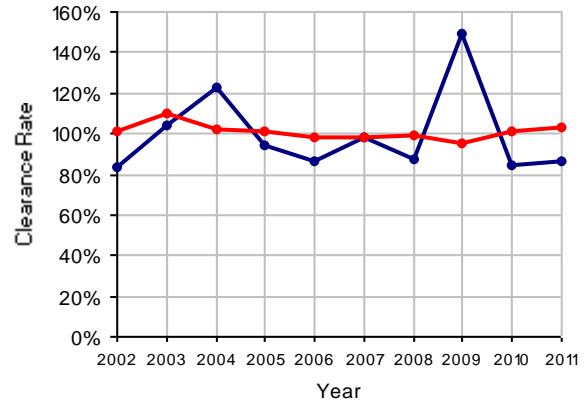
2011 Juvenile Delinquency

	No. of Cases
Cases Pending 1/1/2011	16
New Cases Filed in 2011	38
Cases Available for Processing	54
Processed By:	
Judge	25 75.8%
Non-Judicial Officer	8 24.2%
Other	0
Cases Processed	33 100.0%
Cases Pending 12/31/2011	21

Juvenile Delinquency New Cases Filed, 2002-2011

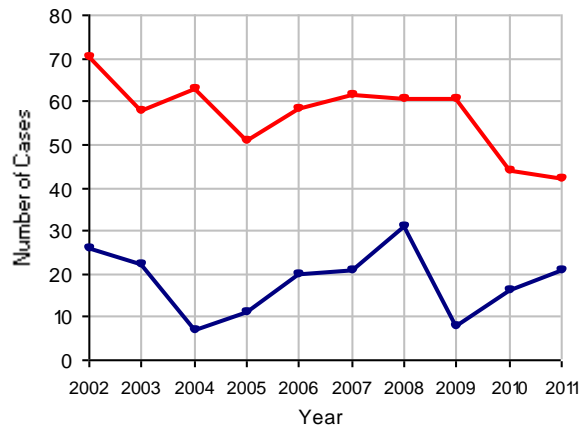


Clearance Rate, 2002-2011



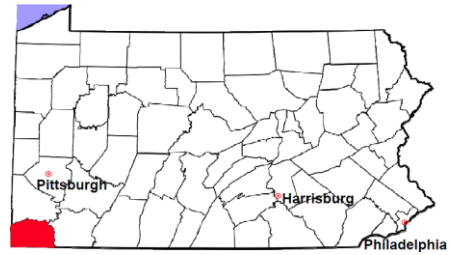
Note: Clearance Rate = Cases Processed / New Cases Filed

Cases Pending at the End of Year, 2002-2011



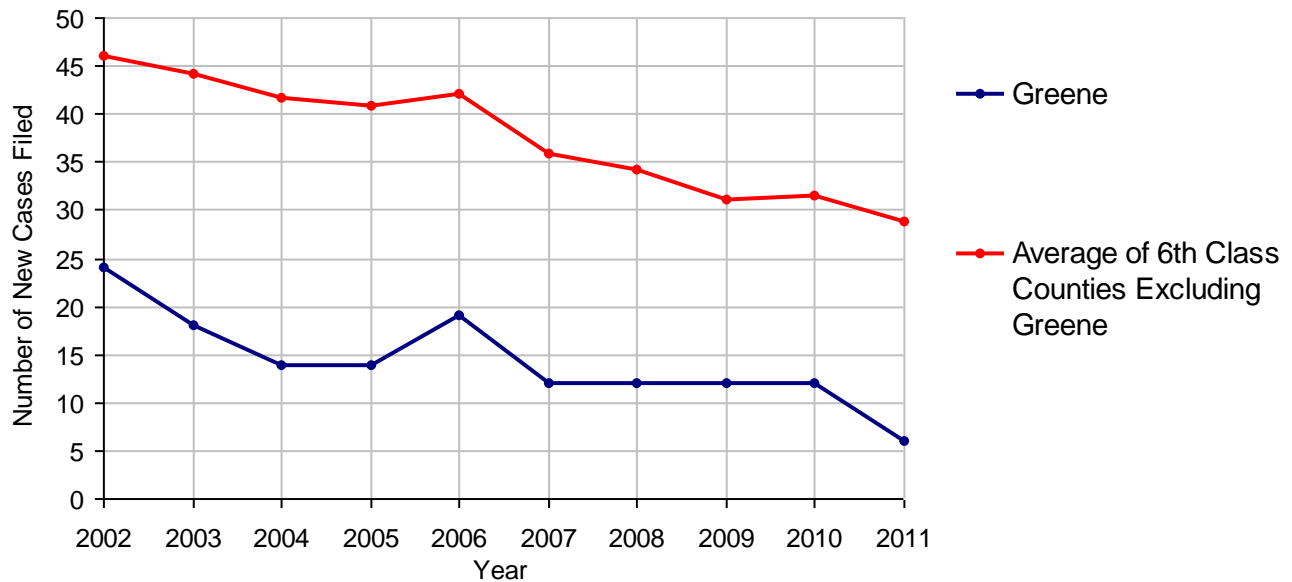
Greene County

2011 Population Estimate: 38,623
 Class of County: 6th
 No. of Common Pleas Court Judgeships: 2



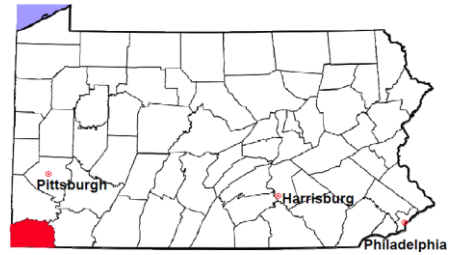
2011 Accounts	No. of Cases	
Cases Pending 1/1/2011	5	
New Cases Filed in 2011	6	
Cases Available for Processing	11	
Processed By:		
Contested before a Judge	1	12.5%
Contested before a Non-judicial Officer	1	12.5%
Uncontested	6	75.0%
Other	0	
Cases Processed	8	100.0%
Cases Pending 12/31/2011	3	

Accounts New Cases Filed, 2002-2011



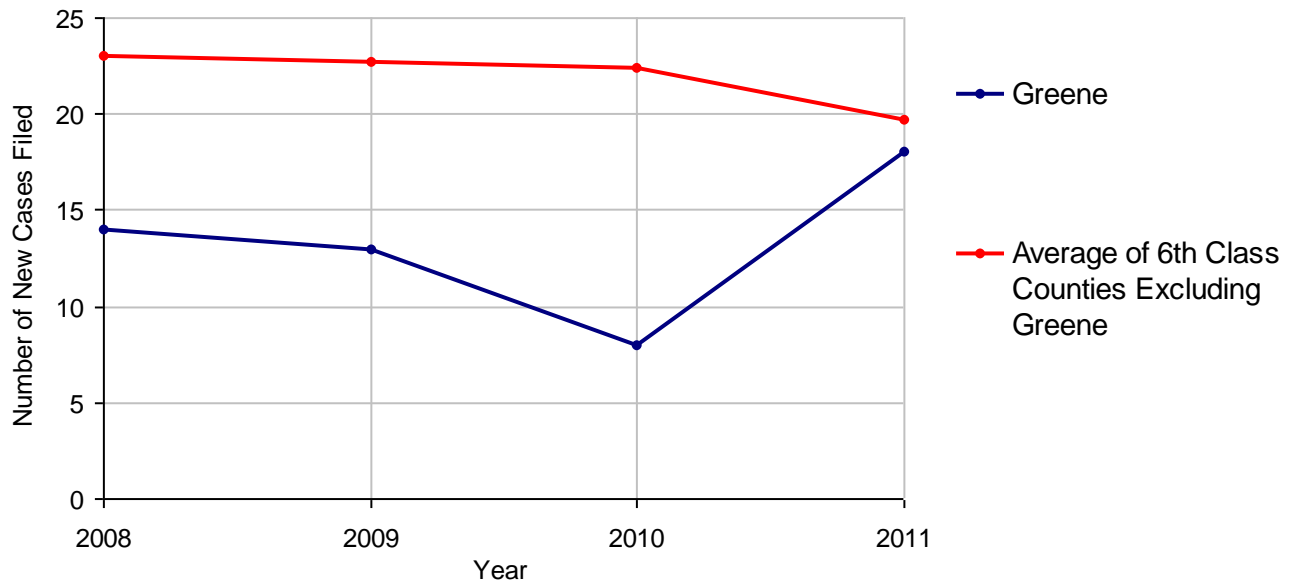
Greene County

2011 Population Estimate: 38,623
 Class of County: 6th
 No. of Common Pleas Court Judgeships: 2



2011 Adoptions		No. of Cases	
Cases Pending 1/1/2011		2	
New Cases Filed in 2011		18	
Cases Available for Processing		20	
Processed By:			
Contested before a Judge	Granted	0	
	Denied	0	
Uncontested	Granted	16	100.0%
	Denied	0	
Other		0	
Cases Processed		16	100.0%
Cases Pending 12/31/2011		4	

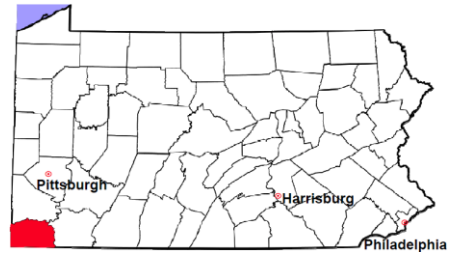
Adoptions New Cases Filed, 2008-2011



Note: Prior to 2008, each petition was counted as one new case, regardless of the number of children listed on the petition. Starting in 2008, each child listed on a petition is counted as a separate case. Therefore, statistics for the years since 2008 should not be compared to those for the years prior to 2008.

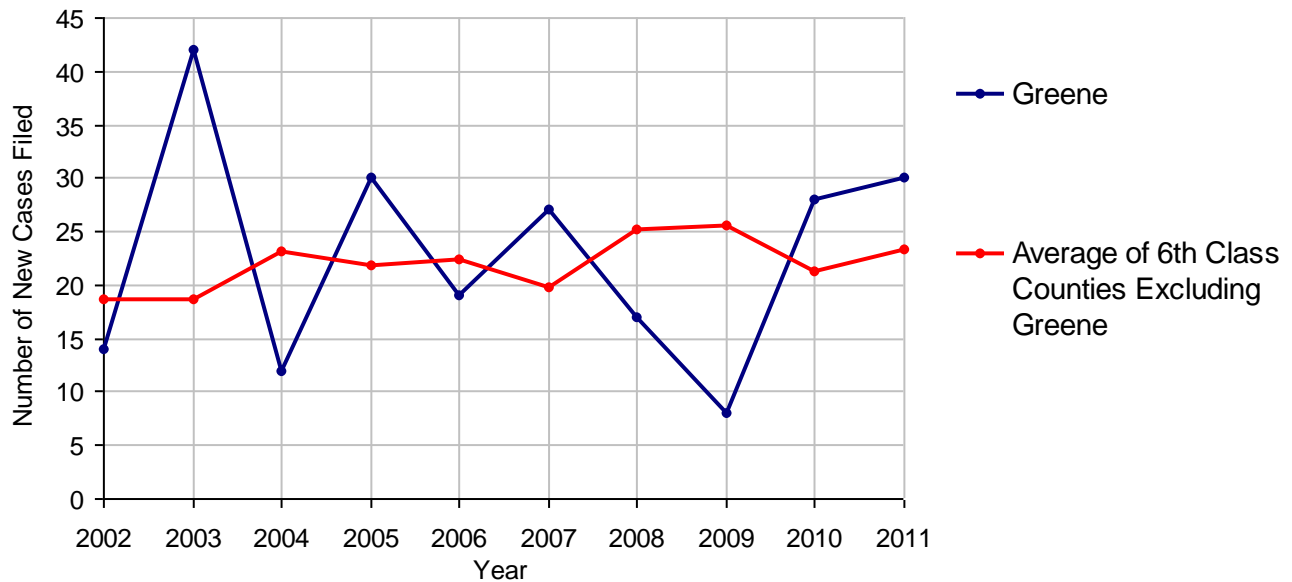
Greene County

2011 Population Estimate: 38,623
 Class of County: 6th
 No. of Common Pleas Court Judgeships: 2



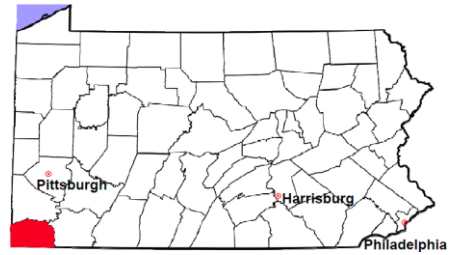
2011 Relinquishments/Terminations	No. of Cases
Cases Pending 1/1/2011	18
New Cases Filed in 2011	30
Cases Available for Processing	48
Processed By:	
Contested before a Judge	4 16.0%
Uncontested	20 80.0%
Other	1 4.0%
Cases Processed	25 100.0%
Cases Pending 12/31/2011	23

Relinquishments/Terminations New Cases Filed, 2002-2011



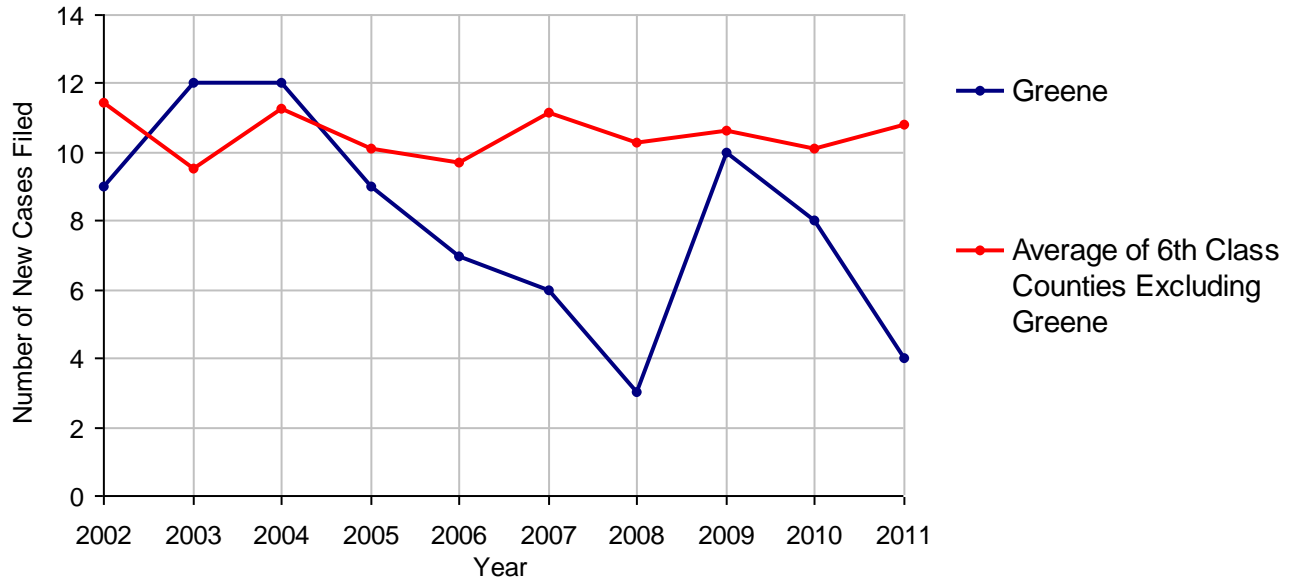
Greene County

2011 Population Estimate: 38,623
 Class of County: 6th
 No. of Common Pleas Court Judgeships: 2



2011 Appointment of Guardians		No. of Cases	
Cases Pending 1/1/2011		1	
New Cases Filed in 2011		4	
Cases Available for Processing		5	
Processed By:			
Contested before a Judge		0	
Uncontested		4	80.0%
Other		1	20.0%
Cases Processed		5	100.0%
Cases Pending 12/31/2011		0	

Appointment of Guardians New Cases Filed, 2002-2011

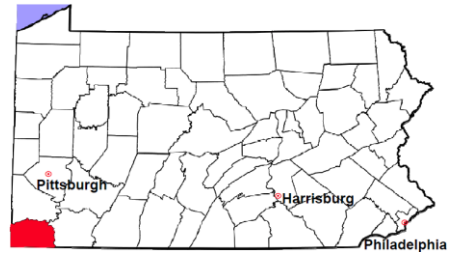


Greene County

2011 Population Estimate: 38,623

Class of County: 6th

No. of Common Pleas Court Judgeships: 2



2011 Jury Activity and Performance Measures

A. Juror Days	413
B. Number Sent to Voir Dire	884
Voir Dire Attendance Rate (B/A * 100)	214.0%
C. Number of Jurors Selected	392
Juror Selection Rate (C/B * 100)	44.3%

Note: In mid-2011, AOPC began utilizing the National Center for State Courts' Jury Managers' Toolbox for collecting jury data. This has resulted in limited jury performance measures being reported for 2011. Additional data will be available in 2012.