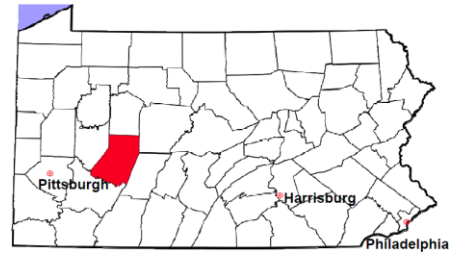


Indiana County

2011 Population Estimate: 89,298

Class of County: 6th

No. of Common Pleas Court Judgeships: 3



2011 Criminal	No. of Cases
---------------	--------------

Cases Pending 1/1/2011	573
New Cases Filed in 2011	1,427
Reopened Cases	90
Cases Available for Disposition	2,090

Disposed by:

Withdrawn/Dismissed	112	8.7%
ARD	328	25.5%
Guilty Plea	745	57.8%
Non-Jury Trial	4	0.3%
Jury Trial	7	0.5%
Inactive	77	6.0%
Other	15	1.2%
Total Cases Disposed	1,288	100.0%

Cases Pending 12/31/2011 **802**

Cases Awaiting Sentencing **83**

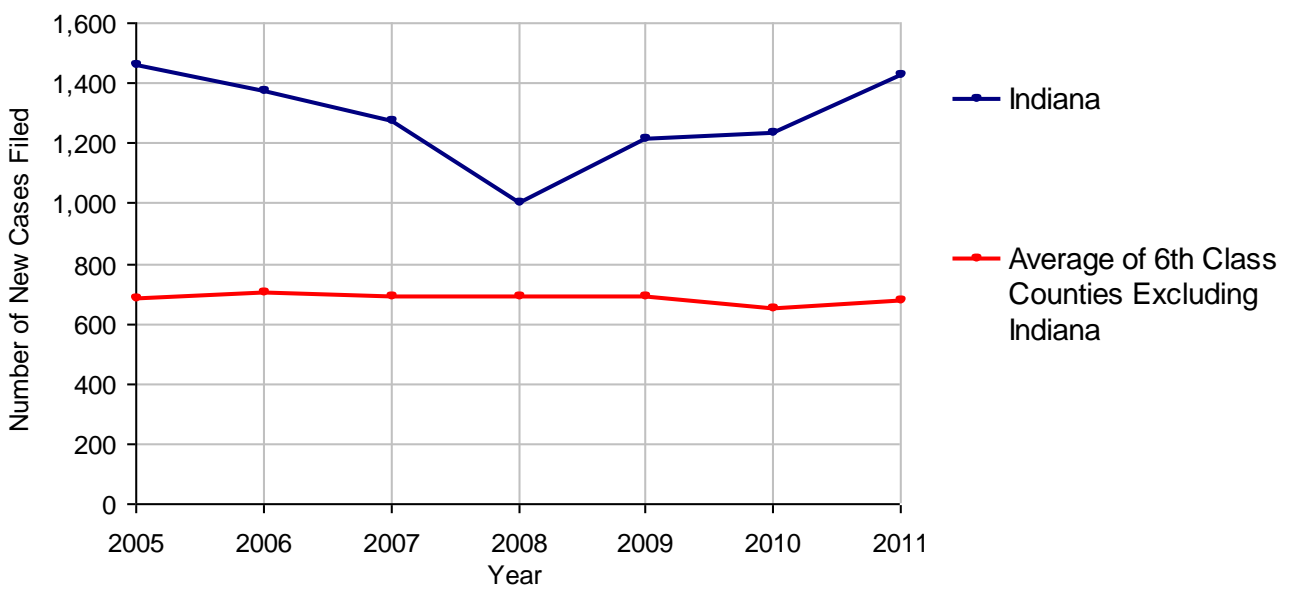
Data provided by CPCMS



Age of Pending Cases as of 12/31/2011		
---------------------------------------	--	--

0-60 Days	233	29.1%
61-120 Days	210	26.2%
121-180 Days	149	18.6%
181-240 Days	87	10.8%
241-300 Days	50	6.2%
301-360 Days	30	3.7%
Over 360 Days	43	5.4%
Total	802	100.0%

Criminal New Cases Filed, 2005-2011

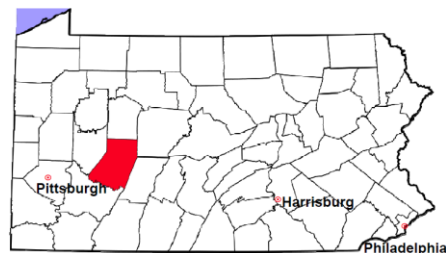


Indiana County

2011 Population Estimate: 89,298

Class of County: 6th

No. of Common Pleas Court Judgeships: 3



2011 Criminal - New Cases by Case Type



Case Type	Felony	Misdemeanor	Summary /Ungraded	Total
Person	58	97	0	155
Property	151	232	1	384
Drug	66	135	0	201
Weapon	7	9	0	16
Public Order	29	106	0	135
Motor Vehicle - DWI/DUI	0	531	0	531
Motor Vehicle - Other	0	5	0	5
Other	0	0	0	0
Total	311	1,115	1	1,427
	21.8%	78.1%	0.1%	100.0%

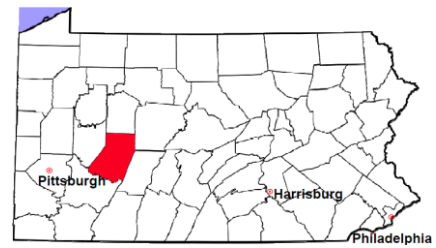
Data provided by CPCMS

Indiana County

2011 Population Estimate: 89,298

Class of County: 6th

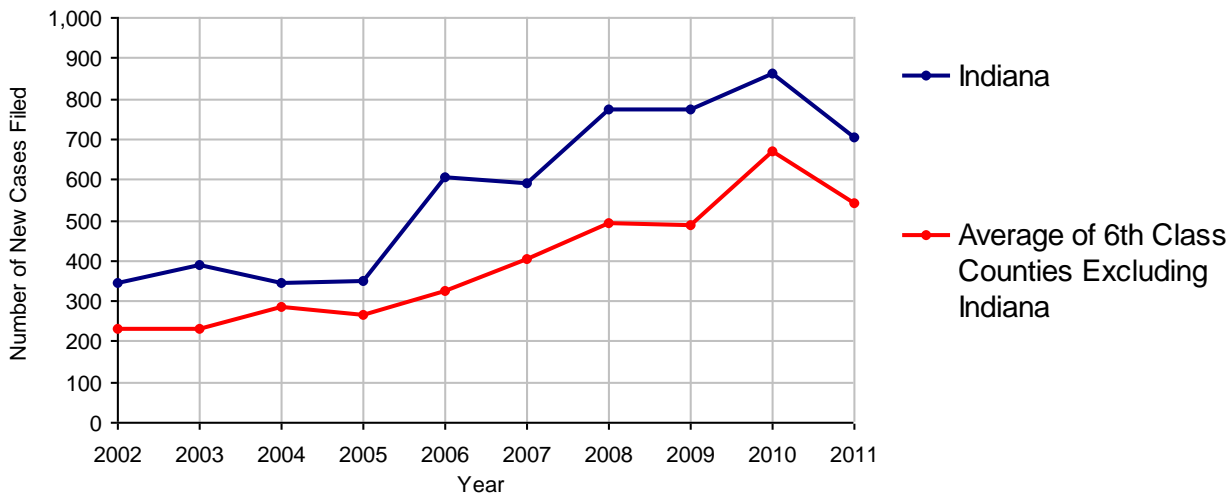
No. of Common Pleas Court Judgeships: 3



2011 Civil	Civil Action	Other	Total
Cases Pending 1/1/2011	369	339	708
Docketed Cases	484	221	705
Arbitration Appeals	3	2	5
Transferred In	0	0	0
Returned to Active	0	0	0
Cases Available for Processing	856	562	1,418
Disposed By:			
Default Judgments	180	57	237
Cases Decided by Arbitration Board	21	10	31
Dispositive Motions	14	1	15
Settlements	192	69	261
Moved to Inactive Status	9	0	9
Transferred/Withdrawn	1	0	1
Pa.R.J.A. 1901 Administrative Purge	0	0	0
Other	82	78	160
Jury Trial	2	2	4
Non-Jury Trial	2	4	6
Total Cases Disposed	503	221	724
Cases Pending 12/31/2011	353	341	694

Age of Pending Cases as of 12/31/2011 (Civil Action Only)		
0-6 months	108	30.6%
7-12 months	109	30.9%
13-18 months	112	31.7%
19-24 months	2	0.6%
25-30 months	0	
31-36 months	6	1.7%
37-42 months	3	0.8%
43-48 months	2	0.6%
49-54 months	0	
55-60 months	0	
61-66 months	4	1.1%
67-72 months	1	0.3%
Over 72 months	6	1.7%
Total	353	100.0%

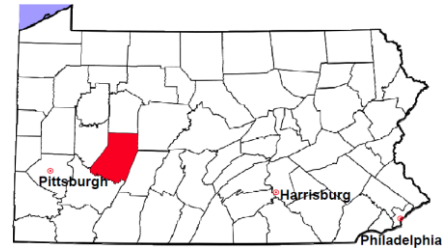
Docketed Cases, 2002-2011



Note: Prior to June 2010, docketed cases under the "Other" category were not reported. The reporting of these cases starting from June 2010 may contribute to an increase in docketed cases from 2009 to 2010.

Indiana County

2011 Population Estimate: 89,298
 Class of County: 6th
 No. of Common Pleas Court Judgeships: 3



2011 Civil - Docketed Cases Listed by Case Type

TORT (does not include mass tort)

Intentional	3
Malicious Prosecution	1
Motor Vehicle	47
Nuisance	0
Premise Liability	17
Product Liability	2
Slander/Libel/Defamation	0
Other	18

MASS TORT

Asbestos	0
Tobacco	0
Toxic Tort - DES	0
Toxic Tort - Implant	0
Toxic Waste	0
Other	1

PROFESSIONAL LIABILITY

Dental	0
Legal	3
Medical Malpractice	5
Other	1

CONTRACT

(does not include judgments)

Buyer Plaintiff	5
Debt Collection:	
Credit Card	239
Debt Collection: Other	104
Employment Dispute:	
Discrimination	0
Employment Dispute: Other	4
Other	24

REAL PROPERTY

Ejectment*	15
Eminent Domain/ Condemnation*	3
Ground Rent	2
Landlord/Tenant Dispute	8
Mortgage Forclosures:	
Residential*	98
Commercial*	14
Partition of Real Property*	2
Quiet Title*	18
Other*	9

CIVIL APPEALS

Administrative Agencies

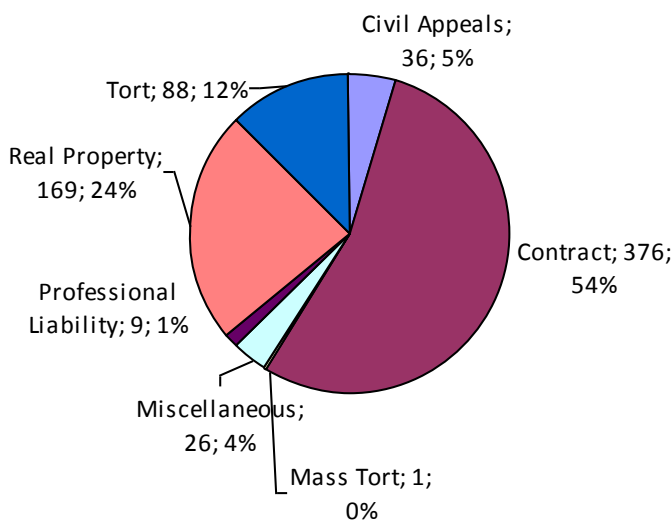
Board of Assessment*	24
Board of Elections*	0
Dept. of Transportation*	0
Zoning Board*	1
Statutory Appeal - Other*	6
Other*	5

MISCELLANEOUS

Common Law/ Statutory Arbitration*	0
Declaratory Judgment*	2
Mandamus*	0
Non-Domestic Relations Restraining Order*	0
Quo Warranto*	0
Replevin*	6
Other*	18

TOTAL DOCKETED CASES: 705

* Civil Other



Of the Docketed Cases:

Pro Se Filings:	15	2.1%
Class Action Suits:	2	0.3%
MDJ Appeals:	36	5.1%

Indiana County

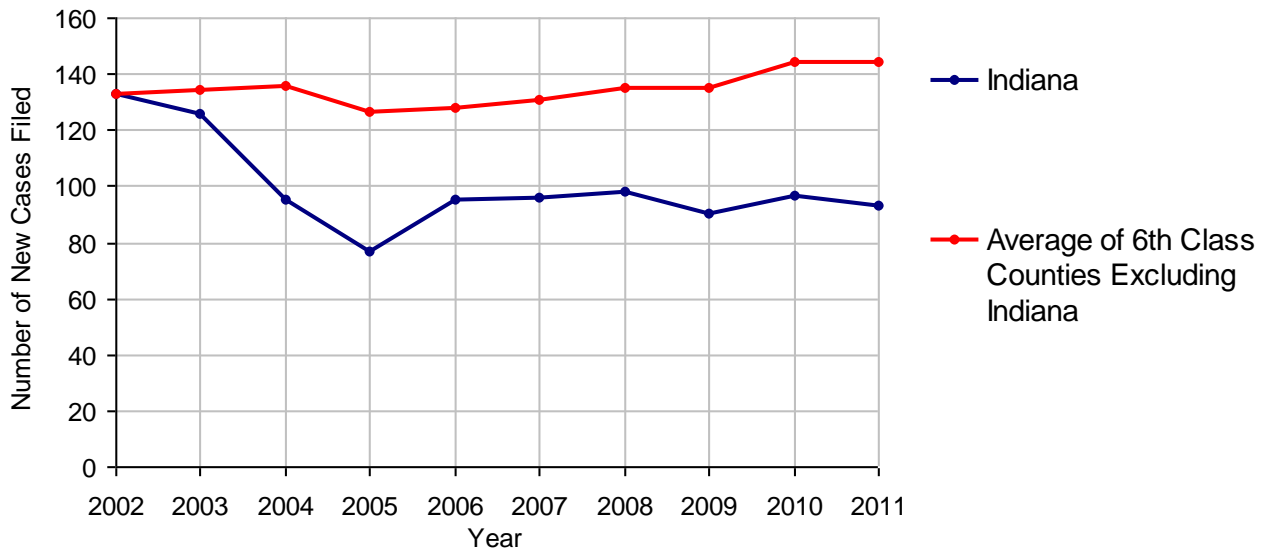
2011 Population Estimate: 89,298
 Class of County: 6th
 No. of Common Pleas Court Judgeships: 3



2011 Protection From Abuse

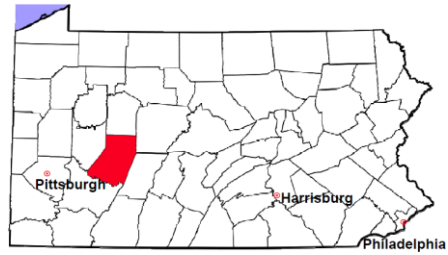
	No. of Petitions	
Cases Pending 1/1/2011	0	
New Cases Filed in 2011	93	
<i>Of these, Petitions Requesting Temporary Orders: 93 (100.0%)</i>		
<i>Temporary Orders DENIED: 1 (1.1%), Temporary Orders GRANTED: 92 (98.9%)</i>		
Cases Available for Processing	93	
Processed By:		
Temporary Order DENIED After Ex Parte Hearing and No Evidentiary Hearing Scheduled	1	1.1%
Temporary Order DISMISSED After Evidentiary Hearing and No Final Order Entered	5	5.5%
Final Order DENIED After Evidentiary Hearing Before a Judge	0	
Final Order GRANTED After Evidentiary Hearing Before a Judge	19	20.9%
Plaintiff Did Not Appear For Evidentiary Hearing	4	4.4%
Final Order by STIPULATION OR AGREEMENT Between the Parties	34	37.4%
Petition WITHDRAWN by Plaintiff	26	28.6%
TRANSFERRED to Another Jurisdiction	1	1.1%
DECEASED Party	0	
Other	1	1.1%
Cases Processed	91	100.0%
Cases Pending 12/31/2011	2	

PFA New Cases Filed, 2002-2011

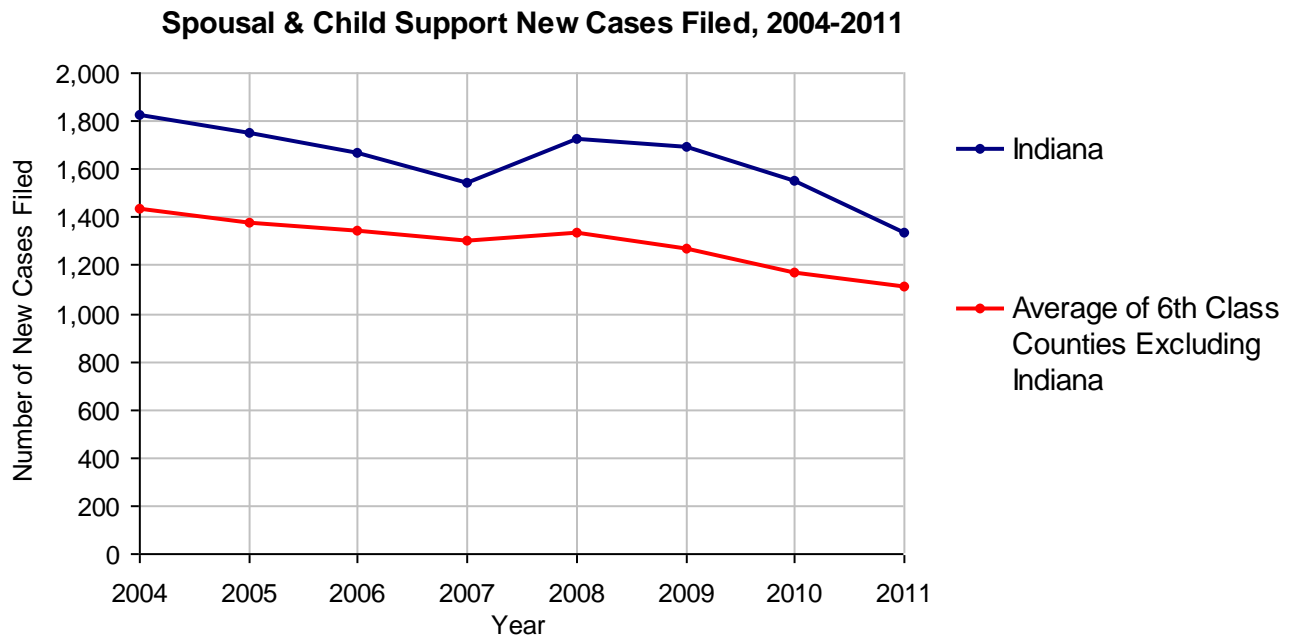


Indiana County

2011 Population Estimate: 89,298
 Class of County: 6th
 No. of Common Pleas Court Judgeships: 3



2011 Spousal & Child Support	No. of Petitions	
Cases Pending 1/1/2011	206	
New Cases Filed in 2011	1,339	
Dockets Transferred In (+)	29	
Dockets Transferred Out (-)	22	
Cases Available for Processing	1,552	
Processed By:		
Judge	5	0.4%
Intake Officer	1,354	97.0%
Hearing Officer	37	2.7%
Other	0	
Cases Processed	1,396	100.0%
Cases Pending 12/31/2011	156	

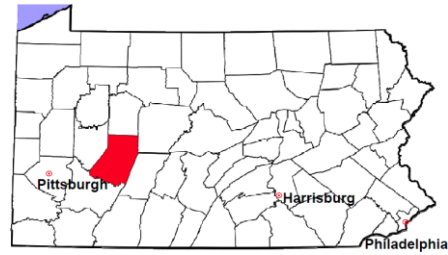


Indiana County

2011 Population Estimate: 89,298

Class of County: 6th

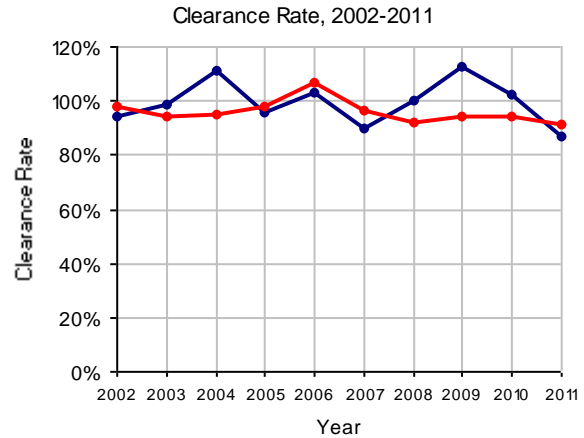
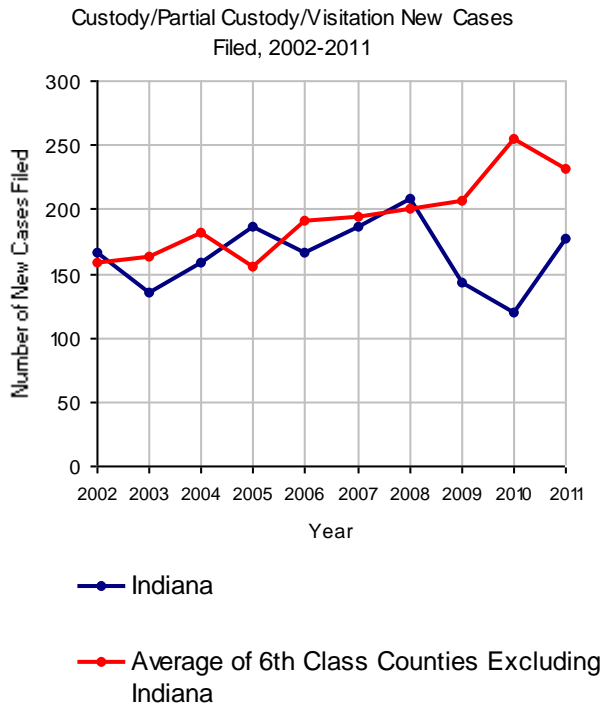
No. of Common Pleas Court Judgeships: 3



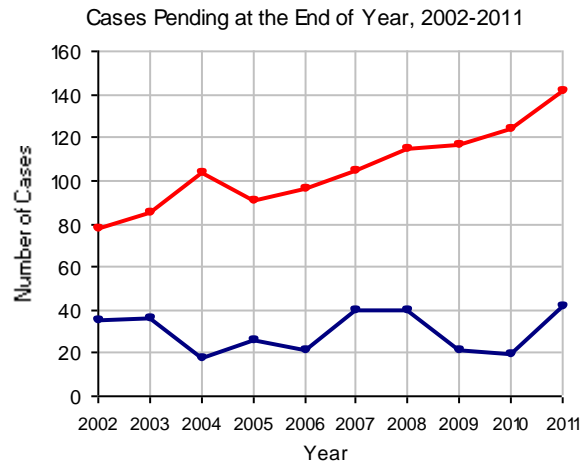
2011 Custody/Partial Custody/Visitation

No. of Petitions

Cases Pending 1/1/2011	19
New Cases Filed in 2011	177
Cases Available for Processing	196
Processed By:	
Judge	53 34.4%
Non-Judicial Officer	86 55.8%
Other	15 9.7%
Cases Processed	154 100.0%
Cases Pending 12/31/2011	42

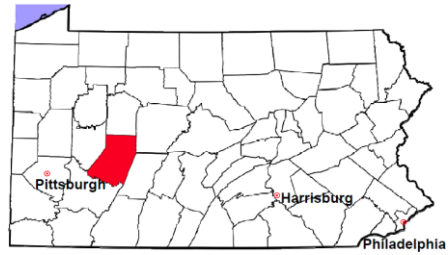


Note: Clearance Rate = Cases Processed / New Cases Filed



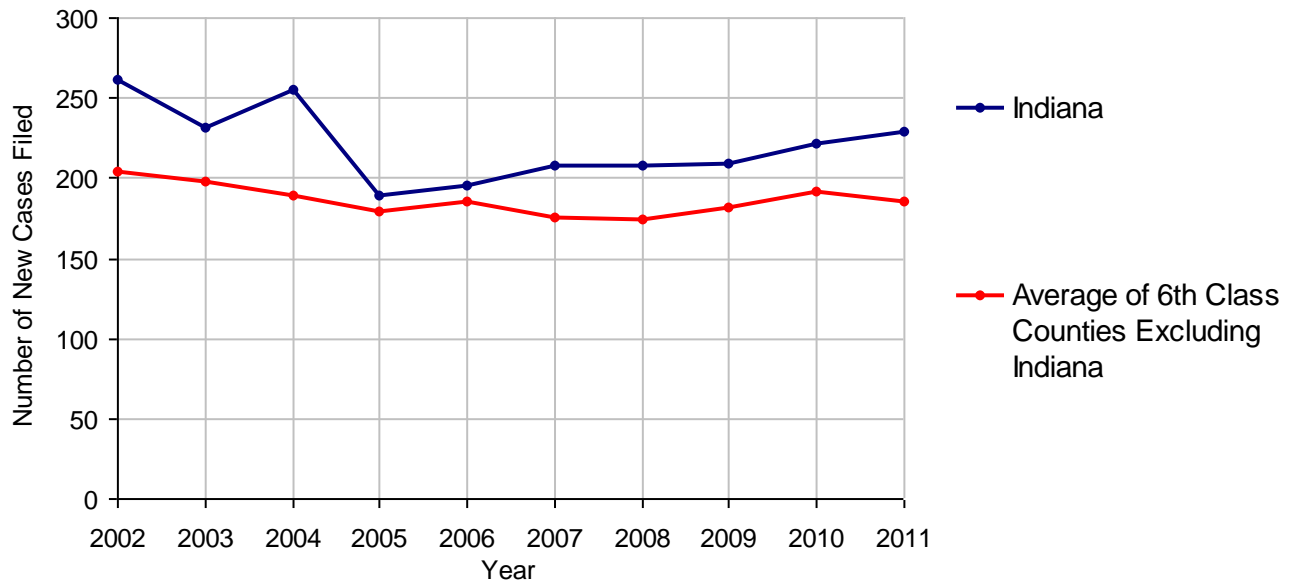
Indiana County

2011 Population Estimate: 89,298
 Class of County: 6th
 No. of Common Pleas Court Judgeships: 3



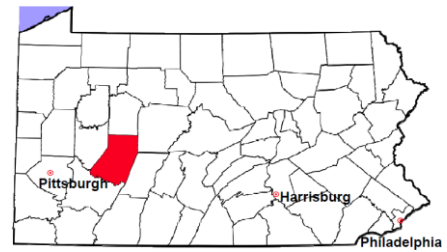
2011 Divorce	No. of Petitions	
Cases Pending 1/1/2011	255	
New Cases Filed in 2011	229	
Cases Available for Processing	484	
Processed By:		
Contested Before a Judge	10	4.8%
Contested Before a Master	0	
Uncontested	185	88.9%
Other	13	6.3%
Cases Processed	208	100.0%
Cases Pending 12/31/2011	276	

Divorce New Cases Filed, 2002-2011



Indiana County

2011 Population Estimate: 89,298
 Class of County: 6th
 No. of Common Pleas Court Judgeships: 3



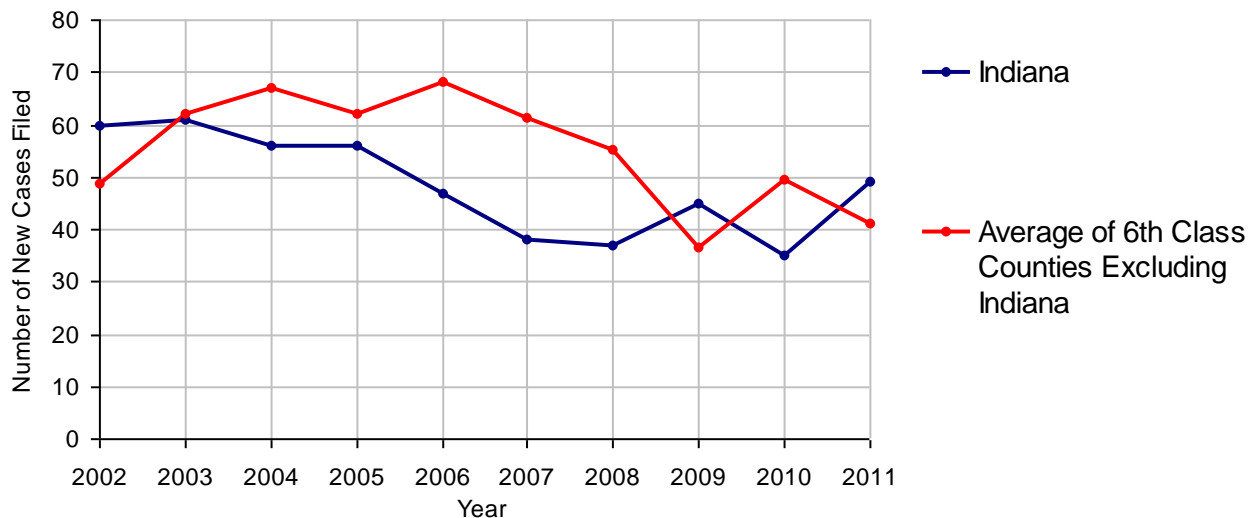
2011 Juvenile Dependency - Active Dependent Inventory



	Abuse/ Neglect	Status Offenses	Total
Cases Pending 1/1/2011	1	1	2
New Petitions Filed in 2011	30	19	49
Other	0	0	0
Total Petitions Available for Processing	31	20	51
Processed by:			
Adjudicated Dependent			
Judge	25	20	45
Master	0	0	0
Adjudicated NOT Dependent			
Judge	0	0	0
Master	0	0	0
Withdrawn/Dismissed/Inactive	4	0	4
Other	2	0	2
Total Petitions Processed	31	20	51
Cases Pending 12/31/2011	0	0	0

Data provided by CPCMS

Abuse/Neglect and Status Offenses New Cases Filed, 2002-2011



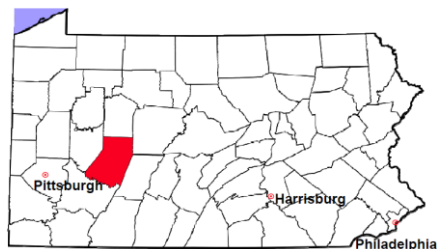
Note: Dependency data for 2002-2010 were collected manually. Dependency data for 2011 were provided by CPCMS.

Indiana County

2011 Population Estimate: 89,298

Class of County: 6th

No. of Common Pleas Court Judgeships: 3



2011 Juvenile Dependency - Adjudicated Dependent Inventory



	Abuse/ Neglect	Status Offenses	Total	
Cases Pending 1/1/2011	46	20	66	
New Adjudicated Dependent Cases	25	20	45	
Other	1	1	2	
Total Adjudicated Dependent Cases	72	41	113	
<u>Court Supervision Terminated:</u>				
Family Reunification	1	0	1	2.6%
Adoption	4	0	4	10.5%
Placement with a Relative/Guardian	8	15	23	60.5%
Aged Out	5	4	9	23.7%
Other Permanency Outcomes*	0	1	1	2.6%
Other**	0	0	0	
Total Adjudicated Dependent Cases Terminated	18	20	38	100.0%
Cases Pending 12/31/2011	54	21	75	

Data provided by CPCMS

* Other Permanency Outcomes include: adjudicated delinquent, death due to natural causes, emancipation, permanent living arrangement, and parent has come forward.

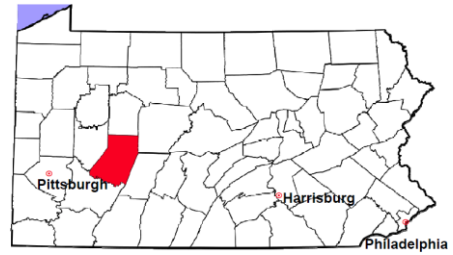
** Other includes cases where Court Supervision is terminated due to transfer out of jurisdiction, withdrawal and administrative closures.

Indiana County

2011 Population Estimate: 89,298

Class of County: 6th

No. of Common Pleas Court Judgeships: 3

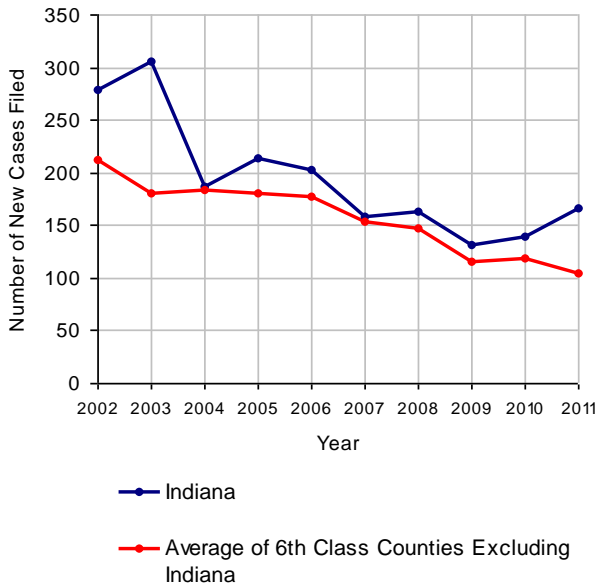


2011 Juvenile Delinquency

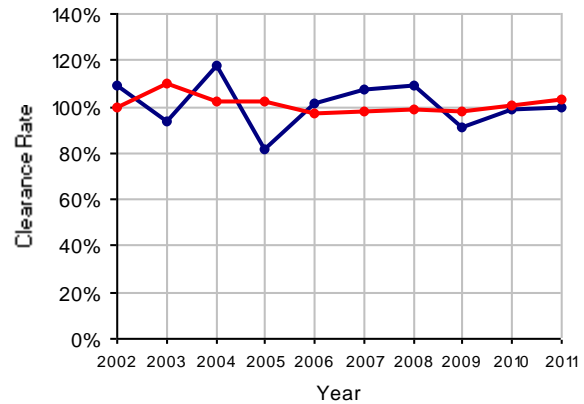
No. of Cases

Cases Pending 1/1/2011	53
New Cases Filed in 2011	166
Cases Available for Processing	219
Processed By:	
Judge	61 36.7%
Non-Judicial Officer	98 59.0%
Other	7 4.2%
Cases Processed	166 100.0%
Cases Pending 12/31/2011	53

Juvenile Delinquency New Cases Filed, 2002-2011

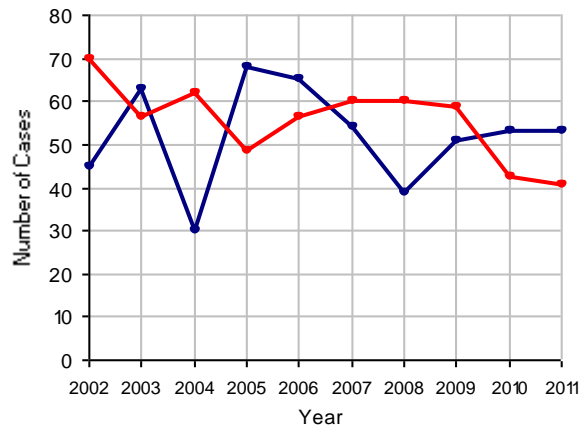


Clearance Rate, 2002-2011



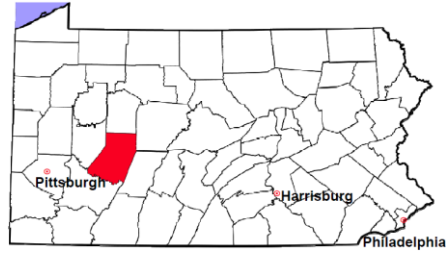
Note: Clearance Rate = Cases Processed / New Cases Filed

Cases Pending at the End of Year, 2002-2011



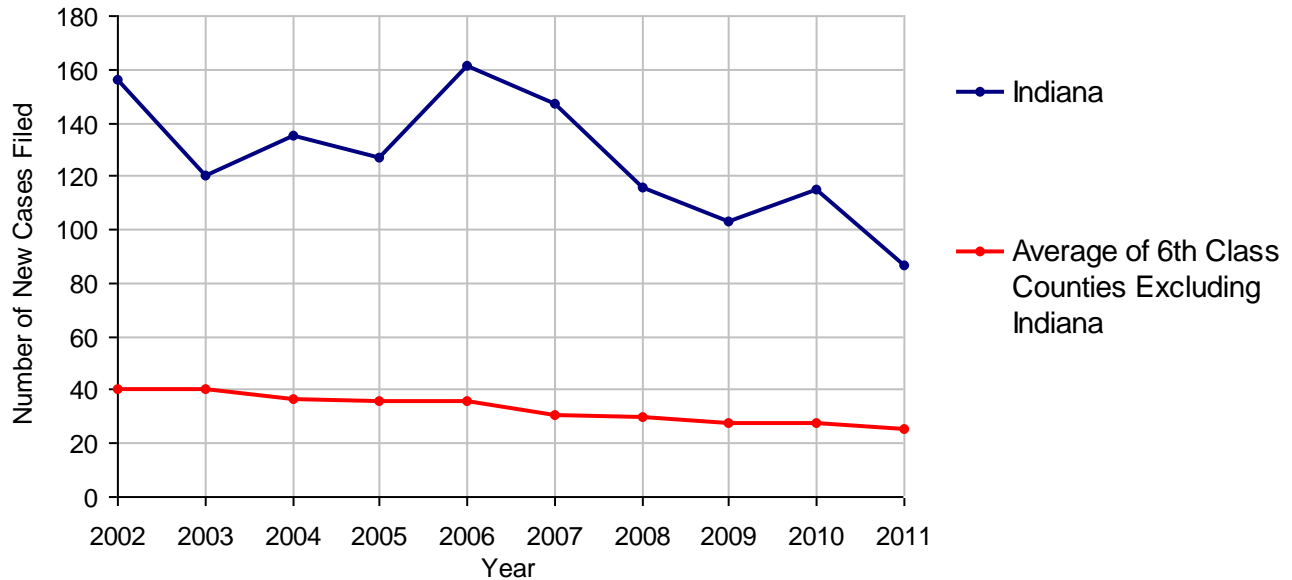
Indiana County

2011 Population Estimate: 89,298
 Class of County: 6th
 No. of Common Pleas Court Judgeships: 3



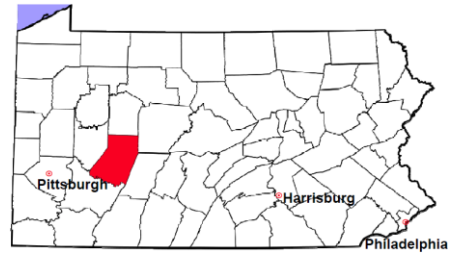
2011 Accounts	No. of Cases	
Cases Pending 1/1/2011	28	
New Cases Filed in 2011	87	
Cases Available for Processing	115	
Processed By:		
Contested before a Judge	0	
Contested before a Non-judicial Officer	0	
Uncontested	82	100.0%
Other	0	
Cases Processed	82	100.0%
Cases Pending 12/31/2011	33	

Accounts New Cases Filed, 2002-2011



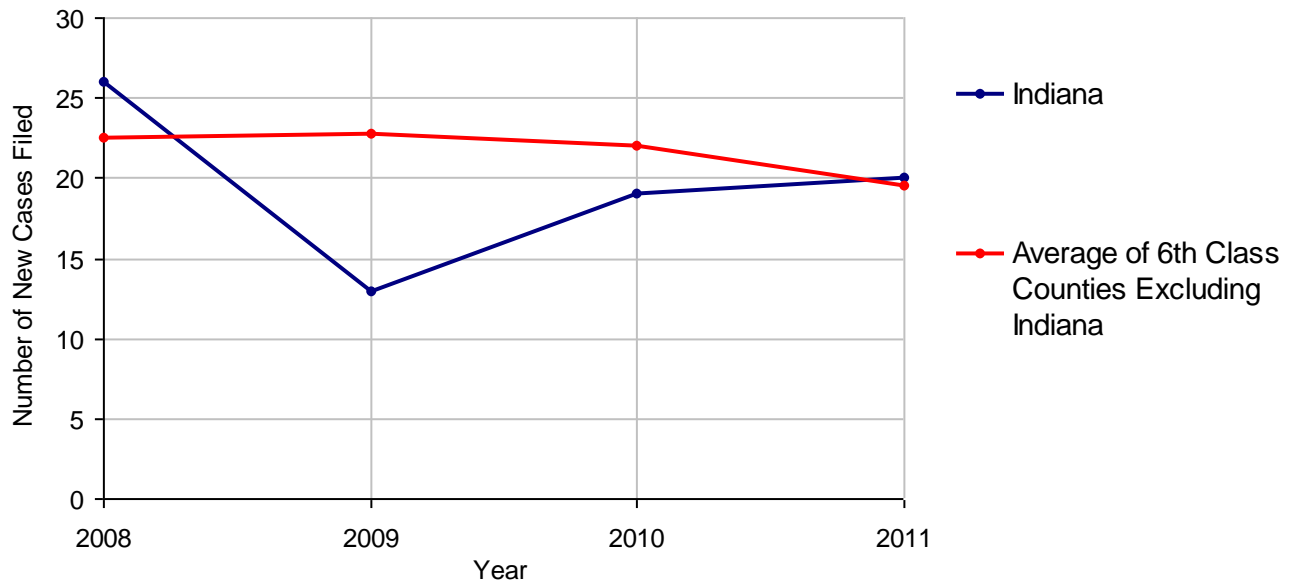
Indiana County

2011 Population Estimate: 89,298
 Class of County: 6th
 No. of Common Pleas Court Judgeships: 3



2011 Adoptions		No. of Cases	
Cases Pending 1/1/2011		25	
New Cases Filed in 2011		20	
Cases Available for Processing		45	
Processed By:			
Contested before a Judge	Granted	0	
	Denied	0	
Uncontested	Granted	20	71.4%
	Denied	0	
Other		8	28.6%
Cases Processed		28	100.0%
Cases Pending 12/31/2011		17	

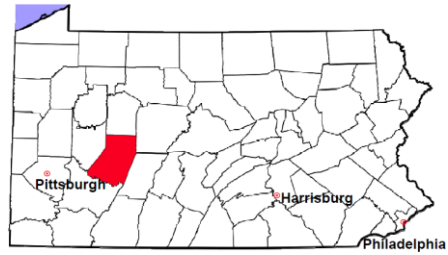
Adoptions New Cases Filed, 2008-2011



Note: Prior to 2008, each petition was counted as one new case, regardless of the number of children listed on the petition. Starting in 2008, each child listed on a petition is counted as a separate case. Therefore, statistics for the years since 2008 should not be compared to those for the years prior to 2008.

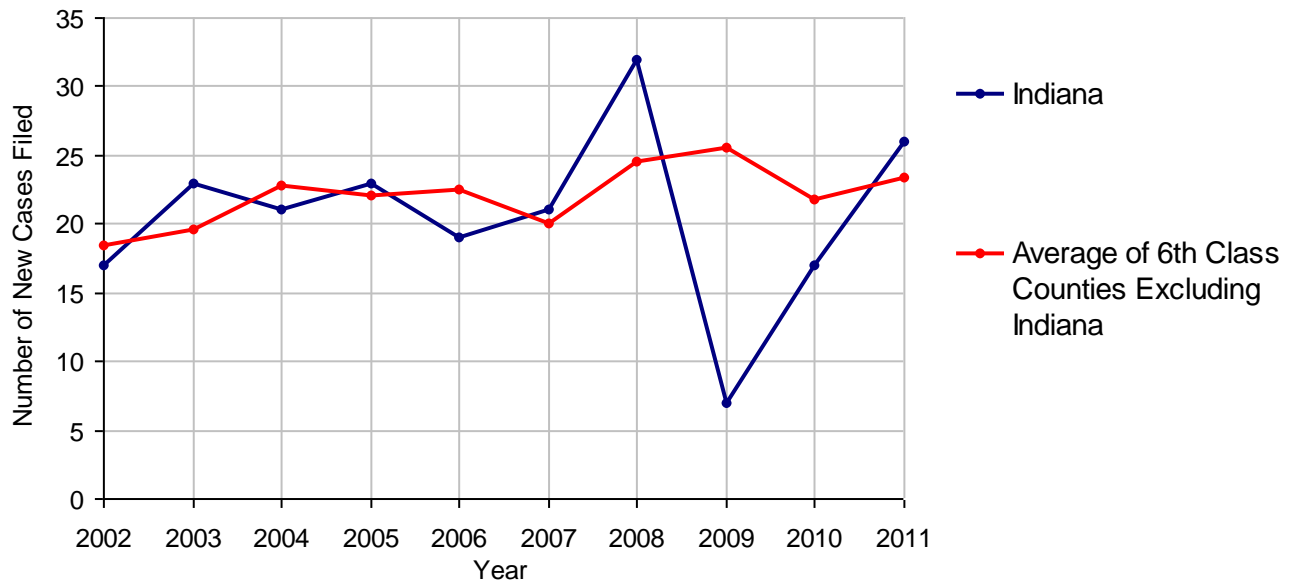
Indiana County

2011 Population Estimate: 89,298
 Class of County: 6th
 No. of Common Pleas Court Judgeships: 3



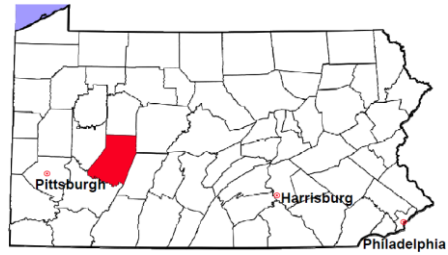
2011 Relinquishments/Terminations		No. of Cases
Cases Pending 1/1/2011		23
New Cases Filed in 2011		26
Cases Available for Processing		49
Processed By:		
Contested before a Judge		0
Uncontested	22	73.3%
Other	8	26.7%
Cases Processed	30	100.0%
Cases Pending 12/31/2011		19

Relinquishments/Terminations New Cases Filed, 2002-2011



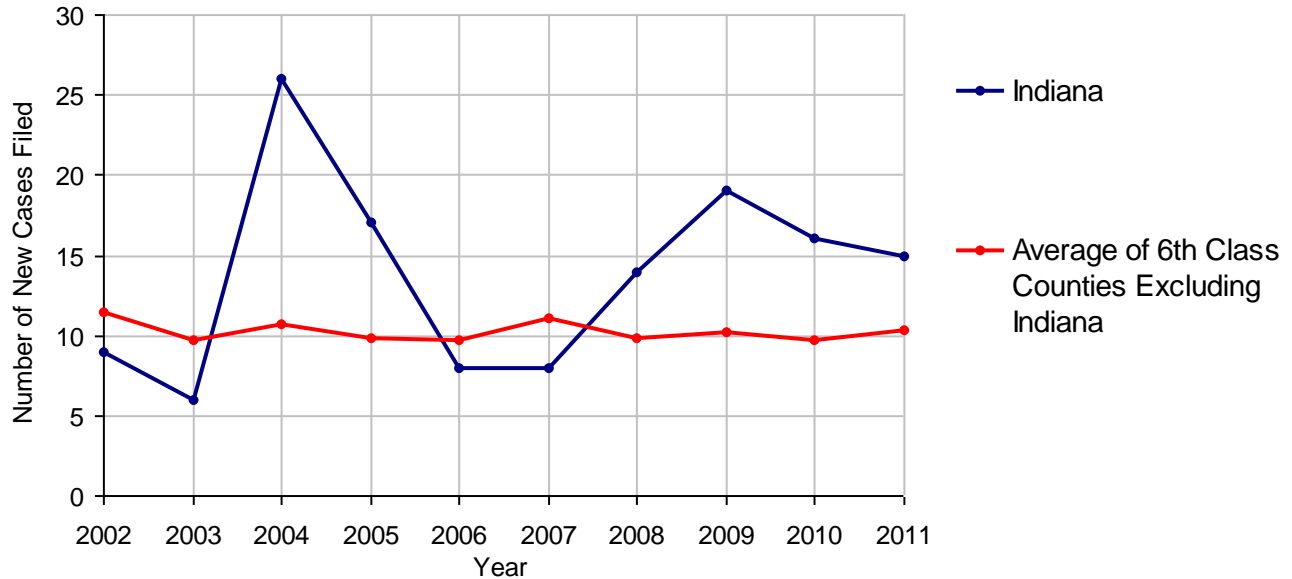
Indiana County

2011 Population Estimate: 89,298
 Class of County: 6th
 No. of Common Pleas Court Judgeships: 3



2011 Appointment of Guardians		No. of Cases
Cases Pending 1/1/2011		14
New Cases Filed in 2011		15
Cases Available for Processing		29
Processed By:		
Contested before a Judge		0
Uncontested		22 100.0%
Other		0
Cases Processed		22 100.0%
Cases Pending 12/31/2011		7

Appointment of Guardians New Cases Filed, 2002-2011

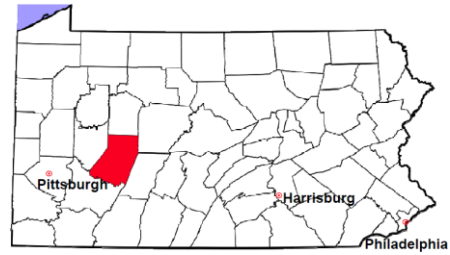


Indiana County

2011 Population Estimate: 89,298

Class of County: 6th

No. of Common Pleas Court Judgeships: 3



2011 Jury Activity and Performance Measures

A. Juror Days	433
B. Number Sent to Voir Dire	378
Voir Dire Attendance Rate (B/A * 100)	87.3%
C. Number of Jurors Selected	126
Juror Selection Rate (C/B * 100)	33.3%

Note: In mid-2011, AOPC began utilizing the National Center for State Courts' Jury Managers' Toolbox for collecting jury data. This has resulted in limited jury performance measures being reported for 2011. Additional data will be available in 2012.