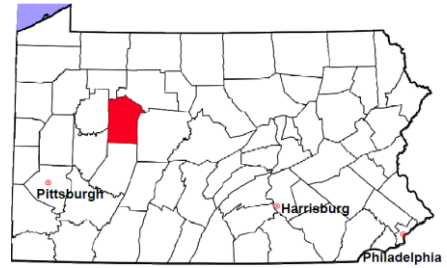


Jefferson County

2011 Population Estimate: 44,976
 Class of County: 6th
 No. of Common Pleas Court Judgeships: 1



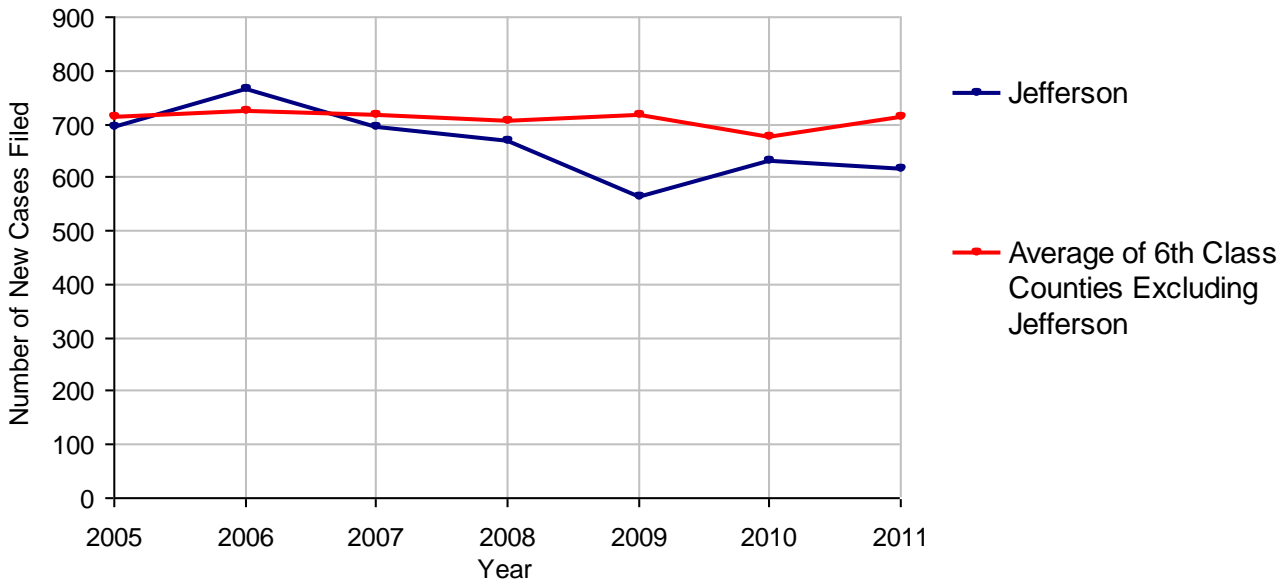
2011 Criminal No. of Cases

Cases Pending 1/1/2011	351
New Cases Filed in 2011	616
Reopened Cases	38
Cases Available for Disposition	1,005
Disposed by:	
Withdrawn/Dismissed	35 4.8%
ARD	140 19.4%
Guilty Plea	500 69.3%
Non-Jury Trial	1 0.1%
Jury Trial	2 0.3%
Inactive	11 1.5%
Other	33 4.6%
Total Cases Disposed	722 100.0%
Cases Pending 12/31/2011	283
Cases Awaiting Sentencing	2



Age of Pending Cases as of 12/31/2011		
0-60 Days	89	31.4%
61-120 Days	73	25.8%
121-180 Days	47	16.6%
181-240 Days	31	11.0%
241-300 Days	10	3.5%
301-360 Days	3	1.1%
Over 360 Days	30	10.6%
Total	283	100.0%

Criminal New Cases Filed, 2005-2011

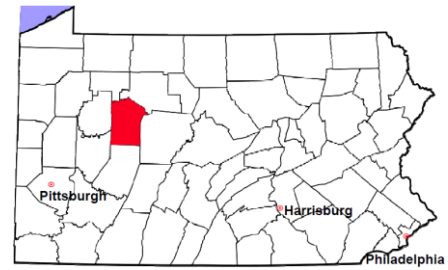


Jefferson County

2011 Population Estimate: 44,976

Class of County: 6th

No. of Common Pleas Court Judgeships: 1



2011 Criminal - New Cases by Case Type

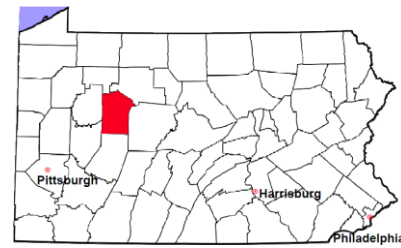


Case Type	Felony	Misdemeanor	Summary /Ungraded	Total
Person	36	48	0	84
Property	69	124	0	193
Drug	46	37	0	83
Weapon	2	1	0	3
Public Order	38	28	0	66
Motor Vehicle - DWI/DUI	0	183	0	183
Motor Vehicle - Other	0	4	0	4
Other	0	0	0	0
Total	191	425	0	616
	31.0%	69.0%		100.0%

Data provided by CPCMS

Jefferson County

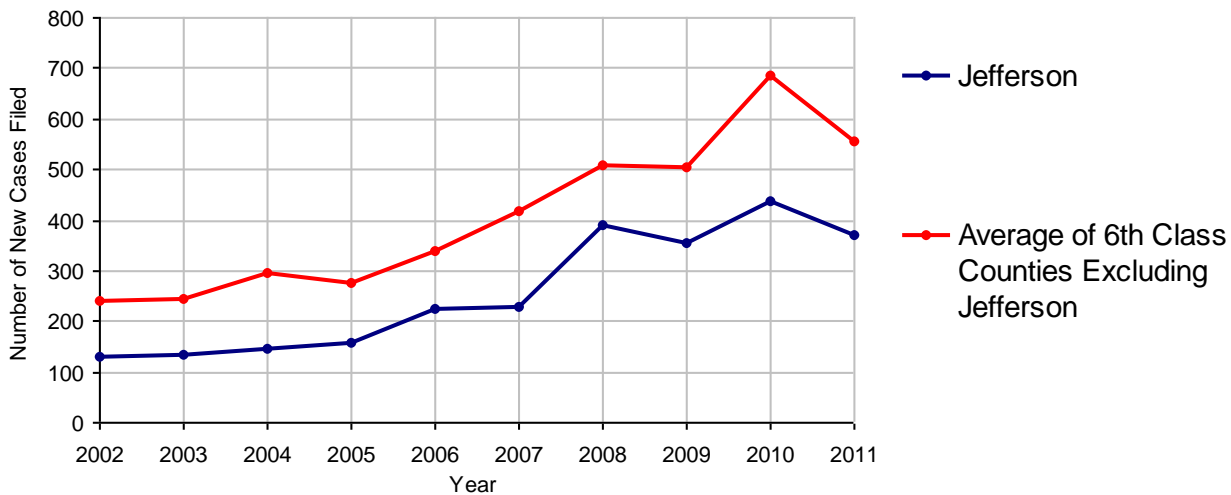
2011 Population Estimate: 44,976
 Class of County: 6th
 No. of Common Pleas Court Judgeships: 1



2011 Civil	Civil Action	Other	Total
Cases Pending 1/1/2011	134	139	273
Docketed Cases	232	140	372
Arbitration Appeals	0	0	0
Transferred In	0	0	0
Returned to Active	0	0	0
Cases Available for Processing	366	279	645
Disposed By:			
Default Judgments	125	40	165
Cases Decided by Arbitration Board	0	1	1
Dispositive Motions	4	9	13
Settlements	70	35	105
Moved to Inactive Status	0	0	0
Transferred/Withdrawn	0	1	1
Pa.R.J.A. 1901 Administrative Purge	0	5	5
Other	4	2	6
Jury Trial	1	0	1
Non-Jury Trial	0	7	7
Total Cases Disposed	204	100	304
Cases Pending 12/31/2011	162	179	341

Age of Pending Cases as of 12/31/2011 (Civil Action Only)		
0-6 months	79	48.8%
7-12 months	42	25.9%
13-18 months	38	23.5%
19-24 months	2	1.2%
25-30 months	0	
31-36 months	0	
37-42 months	0	
43-48 months	0	
49-54 months	0	
55-60 months	0	
61-66 months	1	0.6%
67-72 months	0	
Over 72 months	0	
Total	162	100.0%

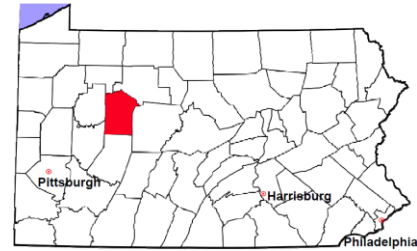
Docketed Cases, 2002-2011



Note: Prior to June 2010, docketed cases under the "Other" category were not reported. The reporting of these cases starting from June 2010 may contribute to an increase in docketed cases from 2009 to 2010.

Jefferson County

2011 Population Estimate: 44,976
 Class of County: 6th
 No. of Common Pleas Court Judgeships: 1



2011 Civil - Docketed Cases Listed by Case Type

TORT (does not include mass tort)

Intentional	3
Malicious Prosecution	0
Motor Vehicle	18
Nuisance	1
Premise Liability	4
Product Liability	0
Slander/Libel/Defamation	0
Other	7

MASS TORT

Asbestos	0
Tobacco	0
Toxic Tort - DES	0
Toxic Tort - Implant	0
Toxic Waste	0
Other	0

PROFESSIONAL LIABILITY

Dental	0
Legal	1
Medical Malpractice	5
Other	0

CONTRACT

(does not include judgments)

Buyer Plaintiff	1
Debt Collection:	
Credit Card	128
Debt Collection: Other	45
Employment Dispute:	
Discrimination	0
Employment Dispute: Other	0
Other	16

REAL PROPERTY

Ejectment*	7
Eminent Domain/ Condemnation*	0
Ground Rent	0
Landlord/Tenant Dispute	3
Mortgage Forclosures:	
Residential*	52
Commercial*	13
Partition of Real Property*	3
Quiet Title*	11
Other*	6

CIVIL APPEALS

Administrative Agencies

Board of Assessment*	3
Board of Elections*	2
Dept. of Transportation*	17
Zoning Board*	0
Statutory Appeal - Other*	0
Other*	2

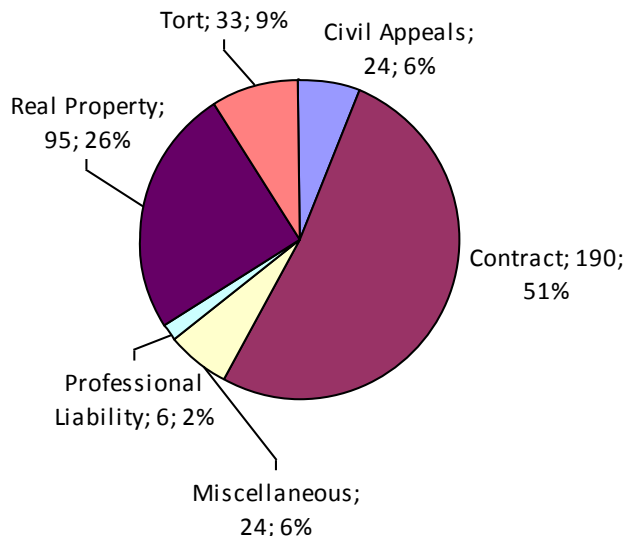
MISCELLANEOUS

Common Law/ Statutory Arbitration*	0
Declaratory Judgment*	8
Mandamus*	0
Non-Domestic Relations Restraining Order*	0
Quo Warranto*	0
Replevin*	3
Other*	13

TOTAL DOCKETED CASES:

372

* Civil Other



Of the Docketed Cases:

Pro Se Filings:	10	2.7%
Class Action Suits:	2	0.5%
MDJ Appeals:	19	5.1%

Jefferson County

2011 Population Estimate: 44,976
 Class of County: 6th
 No. of Common Pleas Court Judgeships: 1

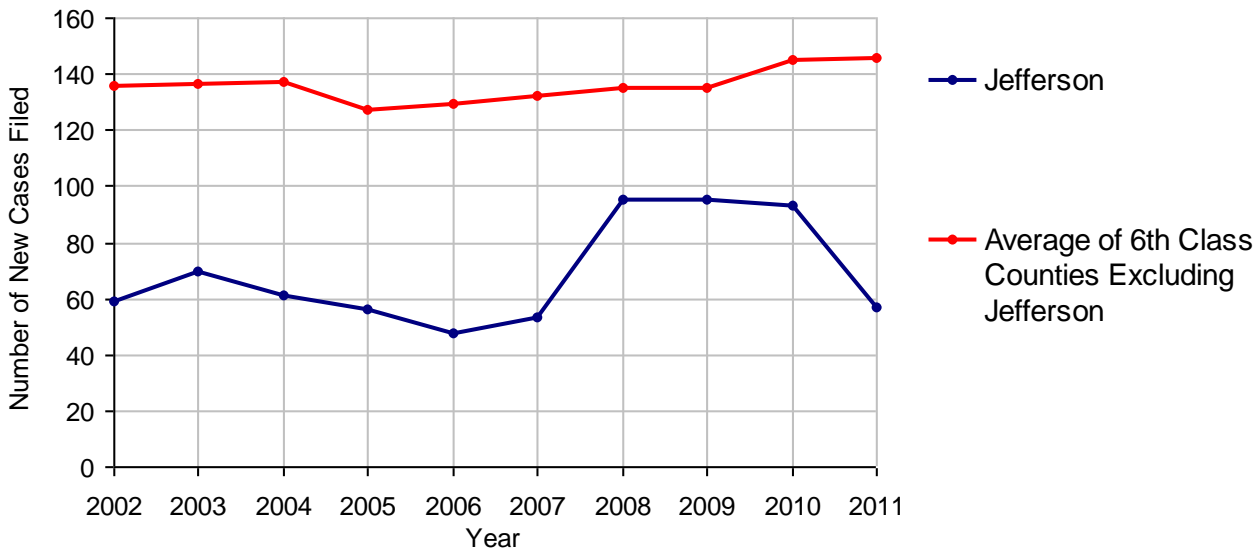


2011 Protection From Abuse

**No. of
Petitions**

Cases Pending 1/1/2011	4
New Cases Filed in 2011	57
<i>Of these, Petitions Requesting Temporary Orders: 57 (100.0%)</i>	
<i>Temporary Orders DENIED: 6 (10.5%), Temporary Orders GRANTED: 51 (89.5%)</i>	
Cases Available for Processing	61
Processed By:	
Temporary Order DENIED After Ex Parte Hearing and No Evidentiary Hearing Scheduled	6 10.5%
Temporary Order DISMISSED After Evidentiary Hearing and No Final Order Entered	0
Final Order DENIED After Evidentiary Hearing Before a Judge	1 1.8%
Final Order GRANTED After Evidentiary Hearing Before a Judge	4 7.0%
Plaintiff Did Not Appear For Evidentiary Hearing	3 5.3%
Final Order by STIPULATION OR AGREEMENT Between the Parties	30 52.6%
Petition WITHDRAWN by Plaintiff	11 19.3%
TRANSFERRED to Another Jurisdiction	1 1.8%
DECEASED Party	0
Other	1 1.8%
Cases Processed	57 100.0%
Cases Pending 12/31/2011	4

PFA New Cases Filed, 2002-2011

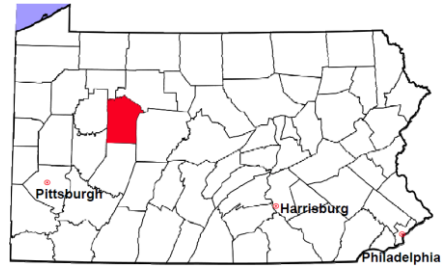


Jefferson County

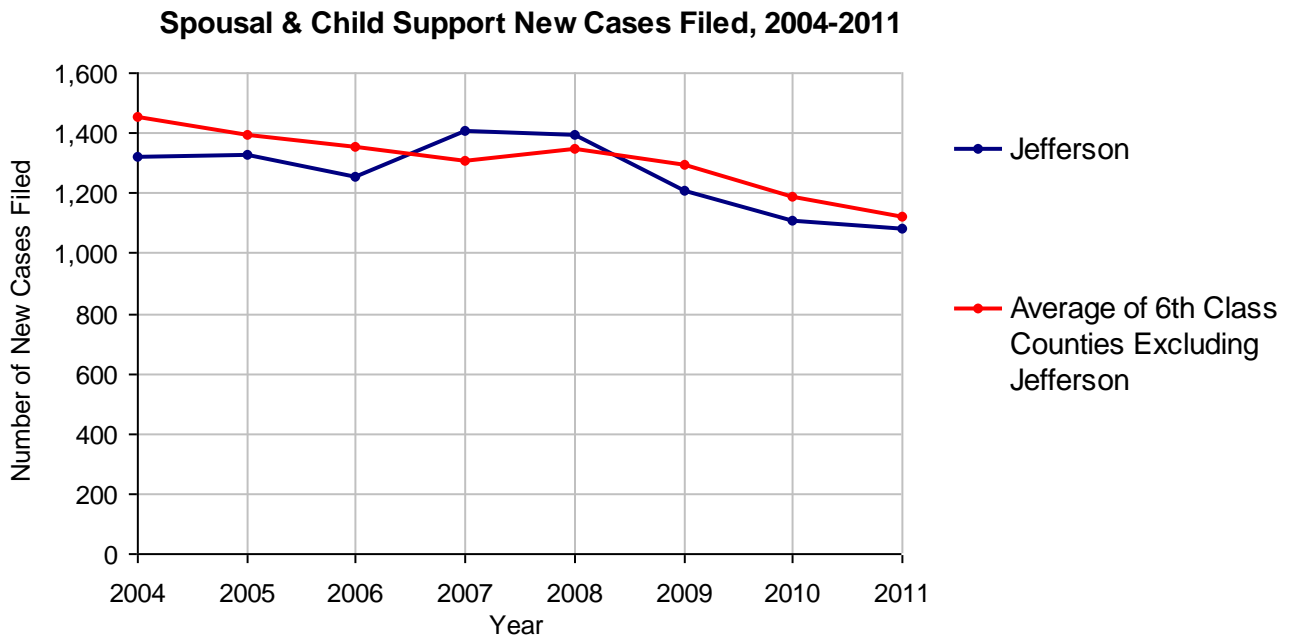
2011 Population Estimate: 44,976

Class of County: 6th

No. of Common Pleas Court Judgeships: 1



2011 Spousal & Child Support	No. of Petitions	
Cases Pending 1/1/2011	120	
New Cases Filed in 2011	1,084	
Dockets Transferred In (+)	11	
Dockets Transferred Out (-)	16	
Cases Available for Processing	1,199	
Processed By:		
Judge	15	1.4%
Intake Officer	1,073	98.6%
Hearing Officer	0	
Other	0	
Cases Processed	1,088	100.0%
Cases Pending 12/31/2011	111	

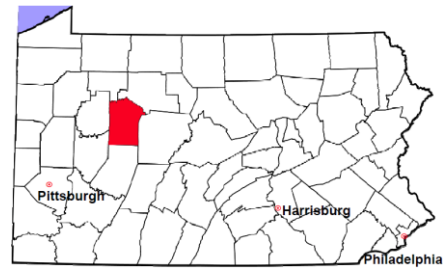


Jefferson County

2011 Population Estimate: 44,976

Class of County: 6th

No. of Common Pleas Court Judgeships: 1



2011 Custody/Partial Custody/Visitation

No. of
Petitions

Cases Pending 1/1/2011

40

New Cases Filed in 2011

212

Cases Available for Processing

252

Processed By:

Judge

20

8.5%

Non-Judicial Officer

57

24.4%

Other

157

67.1%

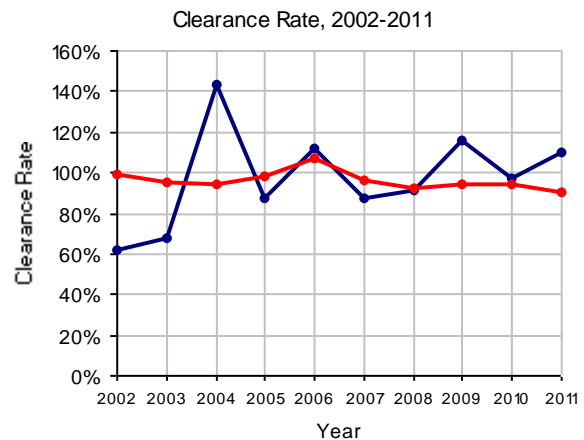
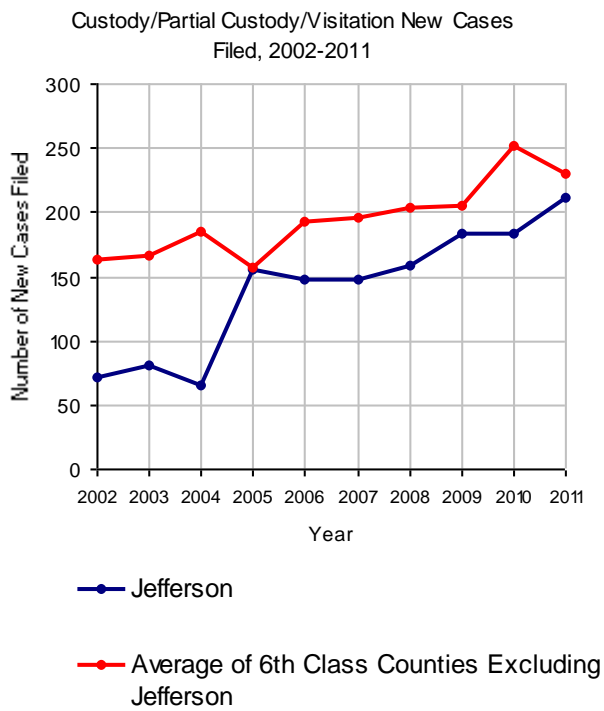
Cases Processed

234

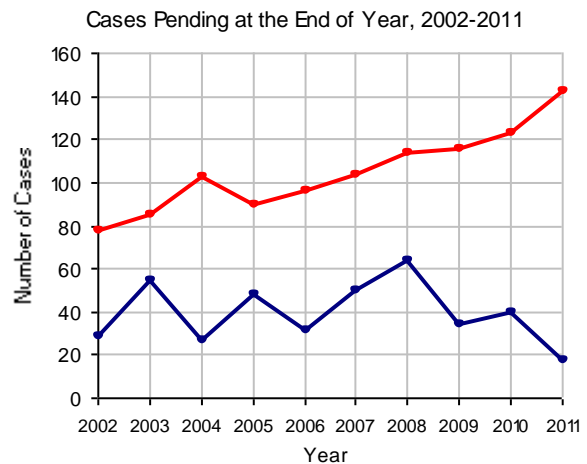
100.0%

Cases Pending 12/31/2011

18

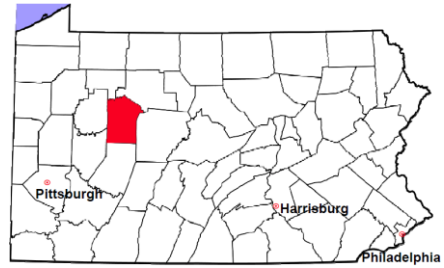


Note: Clearance Rate = Cases Processed / New Cases Filed



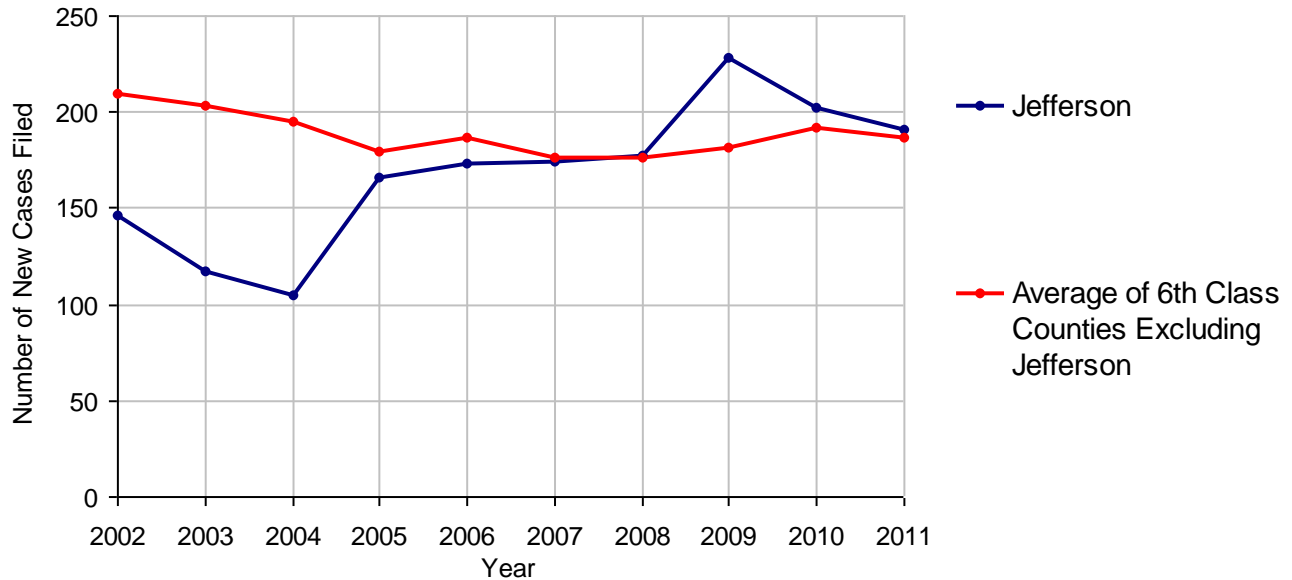
Jefferson County

2011 Population Estimate: 44,976
 Class of County: 6th
 No. of Common Pleas Court Judgeships: 1



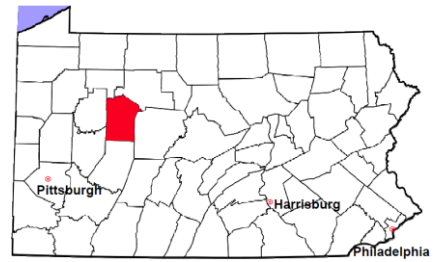
2011 Divorce	No. of Petitions	
Cases Pending 1/1/2011	145	
New Cases Filed in 2011	191	
Cases Available for Processing	336	
Processed By:		
Contested Before a Judge	8	4.0%
Contested Before a Master	15	7.5%
Uncontested	152	76.4%
Other	24	12.1%
Cases Processed	199	100.0%
Cases Pending 12/31/2011	137	

Divorce New Cases Filed, 2002-2011



Jefferson County

2011 Population Estimate: 44,976
 Class of County: 6th
 No. of Common Pleas Court Judgeships: 1



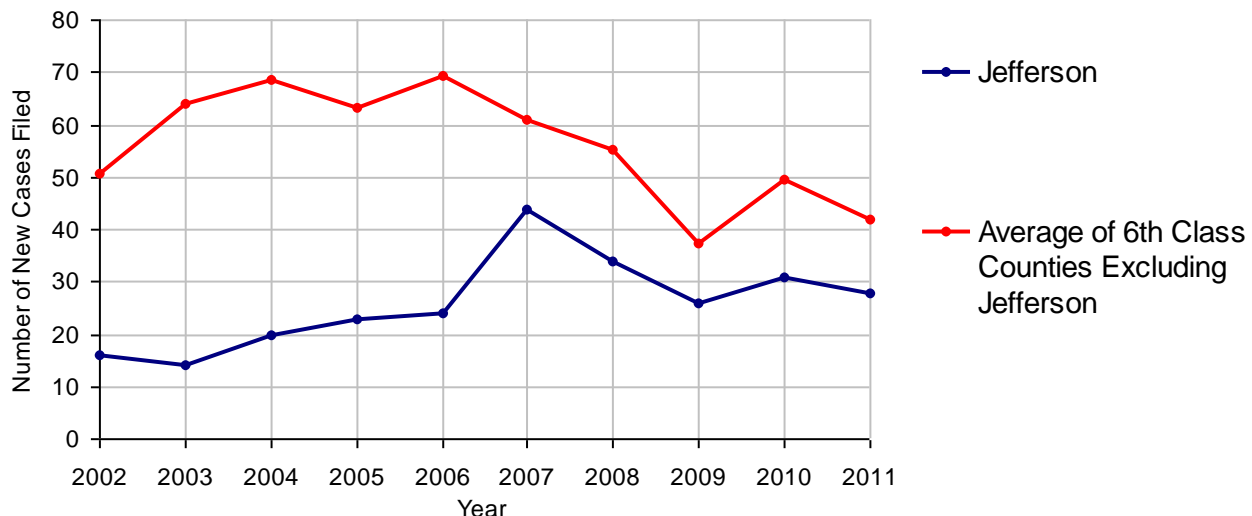
2011 Juvenile Dependency - Active Dependent Inventory



	Abuse/ Neglect	Status Offenses	Total
Cases Pending 1/1/2011	7	0	7
New Petitions Filed in 2011	20	8	28
Other	0	0	0
Total Petitions Available for Processing	27	8	35
Processed by:			
Adjudicated Dependent			
Judge	10	6	16
Master	0	0	0
Adjudicated NOT Dependent			
Judge	6	1	7
Master	0	0	0
Withdrawn/Dismissed/Inactive	0	0	0
Other	6	0	6
Total Petitions Processed	22	7	29
Cases Pending 12/31/2011	5	1	6

Data provided by CPCMS

Abuse/Neglect and Status Offenses New Cases Filed, 2002-2011



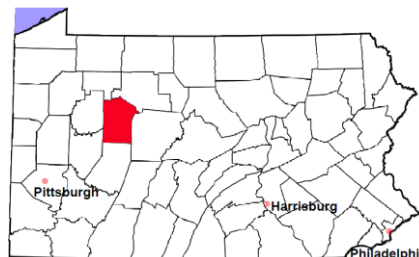
Note: Dependency data for 2002-2010 were collected manually. Dependency data for 2011 were provided by CPCMS.

Jefferson County

2011 Population Estimate: 44,976

Class of County: 6th

No. of Common Pleas Court Judgeships: 1



2011 Juvenile Dependency - Adjudicated Dependent Inventory

	Abuse/ Neglect	Status Offenses	Total	
Cases Pending 1/1/2011	39	4	43	
New Adjudicated Dependent Cases	10	6	16	
Other	5	0	5	
Total Adjudicated Dependent Cases	54	10	64	
<u>Court Supervision Terminated:</u>				
Family Reunification	2	0	2	9.1%
Adoption	3	0	3	13.6%
Placement with a Relative/Guardian	13	0	13	59.1%
Aged Out	3	1	4	18.2%
Other Permanency Outcomes*	0	0	0	
Other**	0	0	0	
Total Adjudicated Dependent Cases Terminated	21	1	22	100.0%
Cases Pending 12/31/2011	33	9	42	

Data provided by CPCMS

* Other Permanency Outcomes include: adjudicated delinquent, death due to natural causes, emancipation, permanent living arrangement, and parent has come forward.

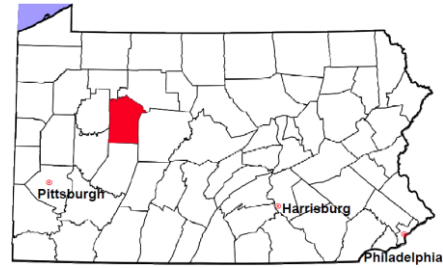
** Other includes cases where Court Supervision is terminated due to transfer out of jurisdiction, withdrawal and administrative closures.

Jefferson County

2011 Population Estimate: 44,976

Class of County: 6th

No. of Common Pleas Court Judgeships: 1

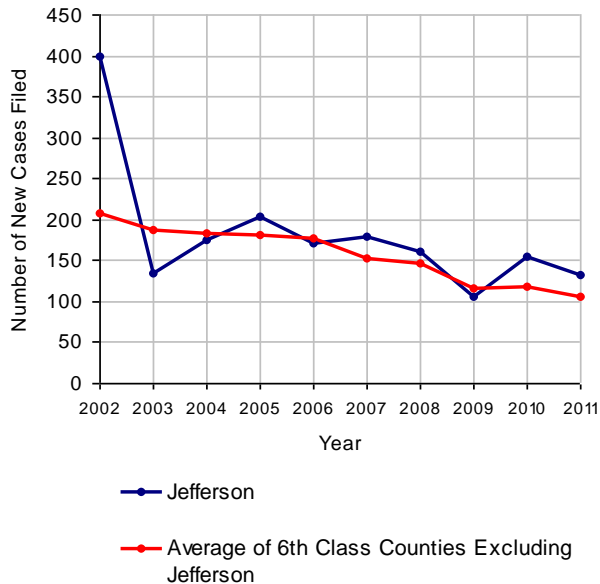


2011 Juvenile Delinquency

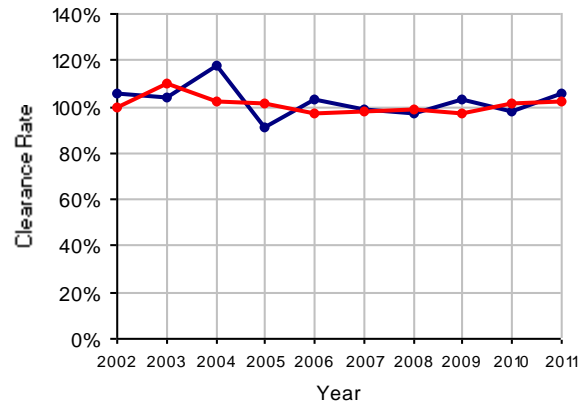
No. of Cases

Cases Pending 1/1/2011	21
New Cases Filed in 2011	133
Cases Available for Processing	154
Processed By:	
Judge	57 40.4%
Non-Judicial Officer	69 48.9%
Other	15 10.6%
Cases Processed	141 100.0%
Cases Pending 12/31/2011	13

Juvenile Delinquency New Cases Filed, 2002-2011

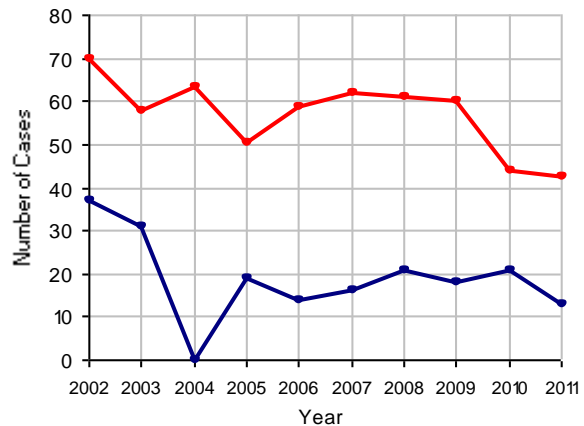


Clearance Rate, 2002-2011



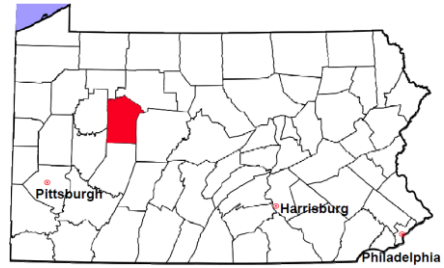
Note: Clearance Rate = Cases Processed / New Cases Filed

Cases Pending at the End of Year, 2002-2011



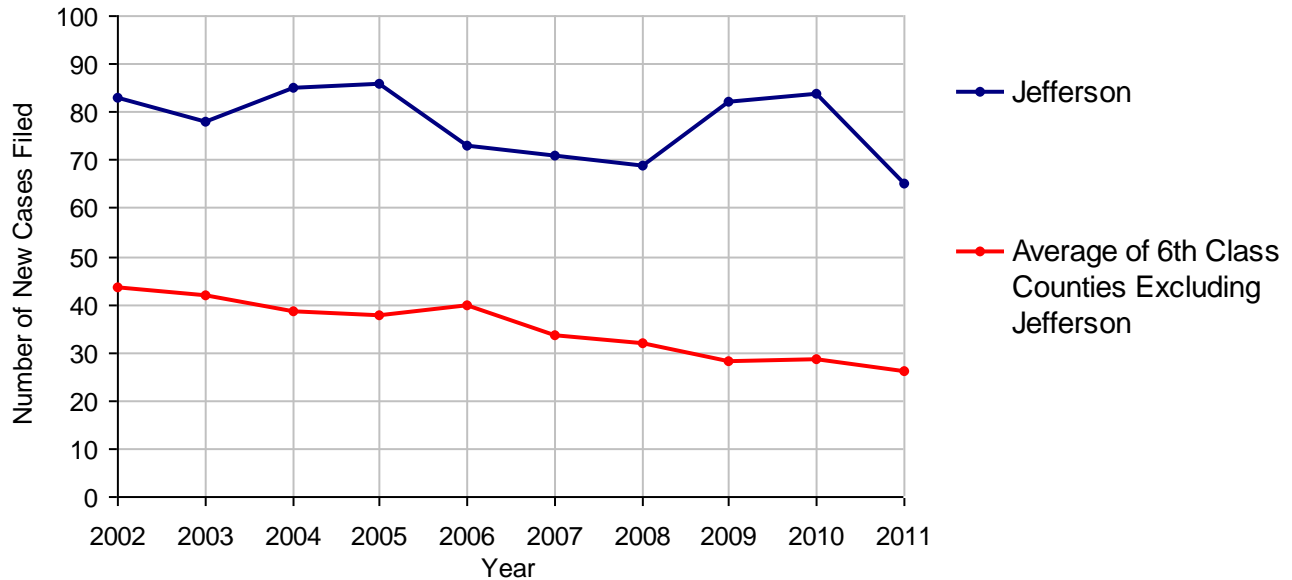
Jefferson County

2011 Population Estimate: 44,976
 Class of County: 6th
 No. of Common Pleas Court Judgeships: 1



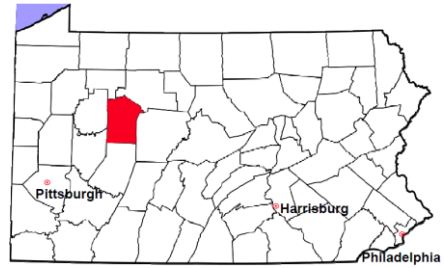
2011 Accounts	No. of Cases	
Cases Pending 1/1/2011	0	
New Cases Filed in 2011	65	
Cases Available for Processing	65	
Processed By:		
Contested before a Judge	0	
Contested before a Non-judicial Officer	0	
Uncontested	65	100.0%
Other	0	
Cases Processed	65	100.0%
Cases Pending 12/31/2011	0	

Accounts New Cases Filed, 2002-2011



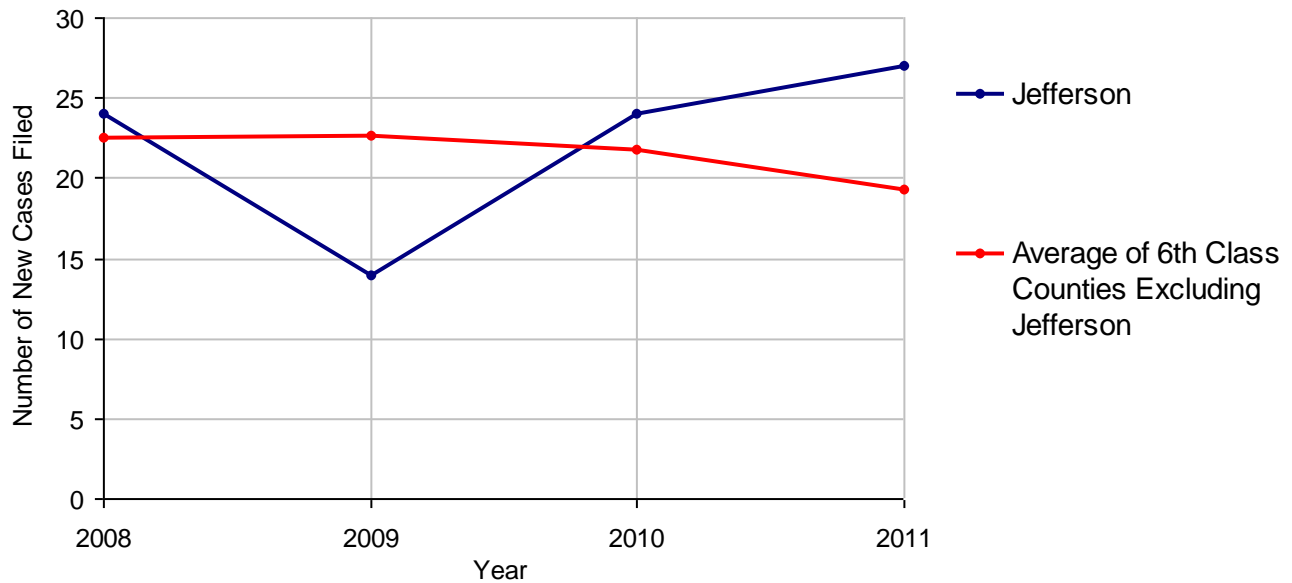
Jefferson County

2011 Population Estimate: 44,976
 Class of County: 6th
 No. of Common Pleas Court Judgeships: 1



2011 Adoptions		No. of Cases	
Cases Pending 1/1/2011		1	
New Cases Filed in 2011		27	
Cases Available for Processing		28	
Processed By:			
Contested before a Judge	Granted	6	23.1%
	Denied	0	
Uncontested	Granted	18	69.2%
	Denied	1	3.8%
Other		1	3.8%
Cases Processed		26	100.0%
Cases Pending 12/31/2011		2	

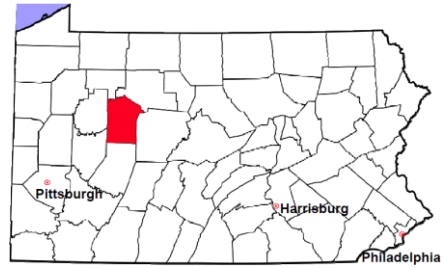
Adoptions New Cases Filed, 2008-2011



Note: Prior to 2008, each petition was counted as one new case, regardless of the number of children listed on the petition. Starting in 2008, each child listed on a petition is counted as a separate case. Therefore, statistics for the years since 2008 should not be compared to those for the years prior to 2008.

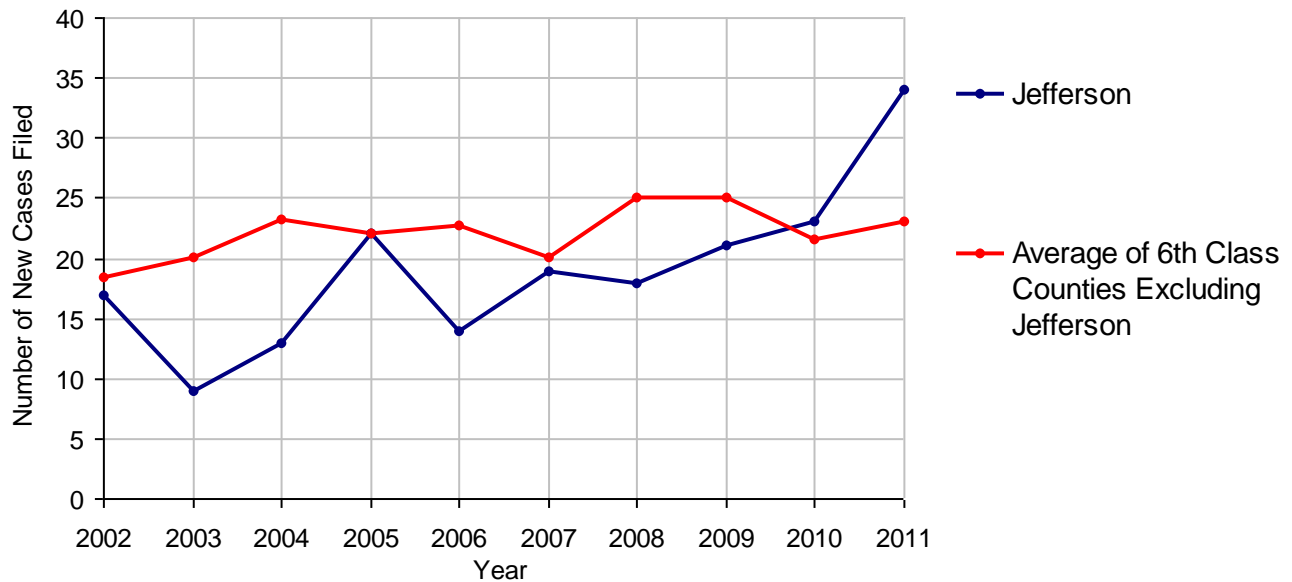
Jefferson County

2011 Population Estimate: 44,976
 Class of County: 6th
 No. of Common Pleas Court Judgeships: 1



2011 Relinquishments/Terminations		No. of Cases
Cases Pending 1/1/2011		2
New Cases Filed in 2011		34
Cases Available for Processing		36
Processed By:		
Contested before a Judge	26	89.7%
Uncontested	3	10.3%
Other	0	
Cases Processed	29	100.0%
Cases Pending 12/31/2011		7

Relinquishments/Terminations New Cases Filed, 2002-2011

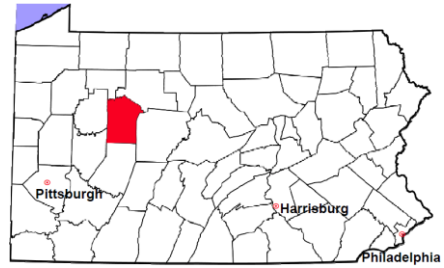


Jefferson County

2011 Population Estimate: 44,976

Class of County: 6th

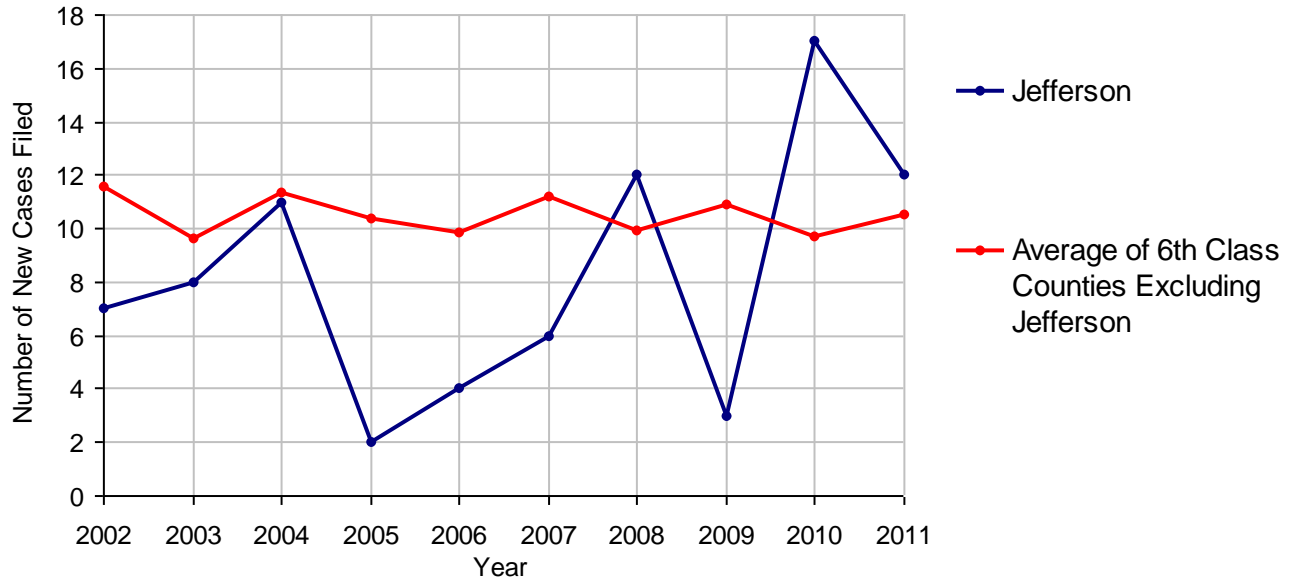
No. of Common Pleas Court Judgeships: 1



2011 Appointment of Guardians

	No. of Cases
Cases Pending 1/1/2011	1
New Cases Filed in 2011	12
Cases Available for Processing	13
Processed By:	
Contested before a Judge	9 69.2%
Uncontested	0
Other	4 30.8%
Cases Processed	13 100.0%
Cases Pending 12/31/2011	0

Appointment of Guardians New Cases Filed, 2002-2011

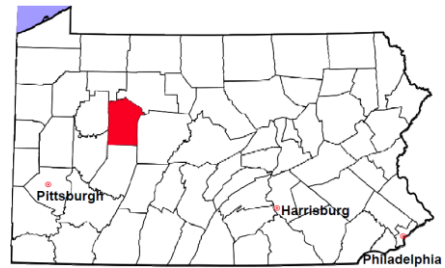


Jefferson County

2011 Population Estimate: 44,976

Class of County: 6th

No. of Common Pleas Court Judgeships: 1



2011 Jury Activity and Performance Measures

A. Juror Days	755
B. Number Sent to Voir Dire	379
Voir Dire Attendance Rate (B/A * 100)	50.2%
C. Number of Jurors Selected	56
Juror Selection Rate (C/B * 100)	14.8%

Note: In mid-2011, AOPC began utilizing the National Center for State Courts' Jury Managers' Toolbox for collecting jury data. This has resulted in limited jury performance measures being reported for 2011. Additional data will be available in 2012.